



@needleandthebelle



>> WOMEN'S LINED BUSTIER WITH
 C,D,DD CUP SIZES AND SKIRT
 SKILL LEVEL: AVERAGE



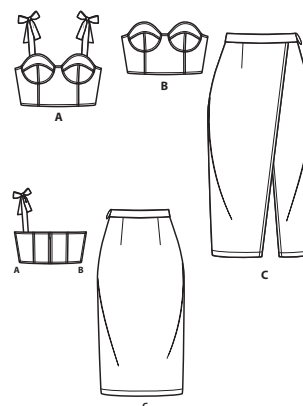
PDF PATTERNS

THINGS YOU NEED:

> **A,B:** 1¼ yds. (1.1m) of ¾" (1cm) featherweight boning, one pkg. of ½" (1.3cm) single fold bias tape, pair of bra underwires for C,D or DD cup, one 9" (23cm) exposed separating zipper. **C:** One 9" (23cm) invisible zipper, one hook and eye.

SUGGESTED FABRICS:

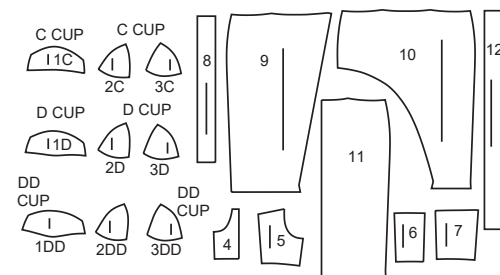
> **A,B,C:** Cotton Blends, Crepe, Lightweight Denim, Linen Blends, Sateen, Stretch Wovens. **A,B** also in Brocade, Dupioni/Shantung, Gingham, Jacquards, Silky Types, Velvet. **Interfacing:** Lightweight Fusible.



Your printed tile pieces should be assembled before you move on to this step!

PIECES (12)

- 1C BRA-A,B (TOP) C CUP
- 1D BRA-A,B (TOP) D CUP
- 1DD BRA-A,B (TOP) DD CUP
- 2C BRA-A,B (FRONT) C CUP
- 2D BRA-A,B (FRONT) D CUP
- 2DD BRA-A,B (FRONT) DD CUP
- 3C BRA-A,B (SIDE FRONT) C CUP
- 3D BRA-A,B (SIDE FRONT) D CUP
- 3DD BRA-A,B (SIDE FRONT) DD CUP
- 4 FRONT-A,B
- 5 SIDE FRONT-A,B
- 6 BACK-A,B
- 7 SIDE BACK-A,B
- 8 SHOULDER STRAP-A
- 9 RIGHT FRONT-C
- 10 LEFT FRONT-C
- 11 BACK-C
- 12 WAISTBAND-C



YARDAGE CHARTS

SIZES	16W	18W	20W	22W	24W	26W	28W	30W	32W	34W	36W	38W	
BUSTIER A													
45"*	$\frac{7}{8}$	$\frac{7}{8}$	$\frac{7}{8}$	$\frac{7}{8}$	$\frac{7}{8}$	1	1	1	1	1	1	$1\frac{1}{8}$	yds.
60"*	$\frac{7}{8}$	$\frac{7}{8}$	$\frac{7}{8}$	$\frac{7}{8}$	$\frac{7}{8}$	$\frac{7}{8}$	$\frac{7}{8}$	$\frac{7}{8}$	$\frac{7}{8}$	$\frac{7}{8}$	$\frac{7}{8}$	$\frac{7}{8}$	"
115cm*	0.80	0.80	0.80	0.80	0.80	0.80	1.00	1.00	1.00	1.00	1.00	1.00	m.
150cm*	0.80	0.80	0.80	0.80	0.80	0.80	0.80	0.80	0.80	0.80	0.80	0.80	"
A,B LINING													
45"***	$\frac{5}{8}$	$\frac{5}{8}$	$\frac{5}{8}$	$\frac{5}{8}$	$\frac{3}{4}$	$\frac{7}{8}$	$\frac{7}{8}$	$\frac{7}{8}$	$\frac{7}{8}$	$\frac{7}{8}$	$\frac{7}{8}$	$\frac{7}{8}$	yds.
115cm**	0.60	0.60	0.60	0.60	0.70	0.80	0.80	0.80	0.80	0.80	0.80	0.80	m.
A,B INTERFACING													
20"	$1\frac{3}{8}$	$1\frac{1}{2}$	$1\frac{1}{2}$	$1\frac{1}{2}$	$1\frac{5}{8}$	$1\frac{5}{8}$	$1\frac{3}{4}$	$1\frac{3}{4}$	$1\frac{3}{4}$	$1\frac{3}{4}$	$1\frac{7}{8}$	$1\frac{7}{8}$	yds.
51cm	1.30	1.40	1.40	1.40	1.50	1.50	1.50	1.60	1.60	1.60	1.60	1.80	m.
BUSTIER B													
45"*	$\frac{3}{4}$	$\frac{3}{4}$	$\frac{3}{4}$	$\frac{3}{4}$	$\frac{3}{4}$	$\frac{3}{4}$	$\frac{7}{8}$	$\frac{7}{8}$	$\frac{7}{8}$	$\frac{7}{8}$	1	1	yds.
60"*	$\frac{5}{8}$	$\frac{5}{8}$	$\frac{5}{8}$	$\frac{5}{8}$	$\frac{3}{4}$	$\frac{3}{4}$	$\frac{3}{4}$	$\frac{3}{4}$	$\frac{3}{4}$	$\frac{3}{4}$	$\frac{3}{4}$	$\frac{3}{4}$	"
115cm*	0.70	0.70	0.70	0.70	0.70	0.70	0.70	0.80	0.80	0.80	1.00	1.00	m.
150cm*	0.60	0.60	0.60	0.60	0.60	0.70	0.70	0.70	0.70	0.70	0.70	0.70	"
SKIRT C													
45"*	$2\frac{1}{4}$	$2\frac{1}{4}$	$2\frac{1}{4}$	$2\frac{1}{4}$	$2\frac{1}{4}$	$2\frac{1}{4}$	$2\frac{3}{8}$	$2\frac{3}{8}$	$2\frac{3}{8}$	$2\frac{1}{2}$	$2\frac{1}{2}$	$2\frac{5}{8}$	yds.
60"*	$1\frac{3}{8}$	$1\frac{3}{8}$	$1\frac{3}{8}$	$1\frac{1}{2}$	$1\frac{1}{2}$	$1\frac{5}{8}$	$1\frac{5}{8}$	$1\frac{7}{8}$	2	2	2	2	"
115cm*	2.10	2.10	2.10	2.10	2.10	2.10	2.10	2.20	2.20	2.30	2.30	2.40	m.
150cm*	1.30	1.30	1.30	1.40	1.40	1.50	1.50	1.80	1.80	1.80	1.80	1.90	"
INTERFACING													
20"	$1\frac{1}{8}$	$1\frac{1}{8}$	$1\frac{1}{4}$	$1\frac{1}{4}$	$1\frac{1}{4}$	$1\frac{3}{8}$	$1\frac{3}{8}$	$1\frac{1}{2}$	$1\frac{1}{2}$	$1\frac{5}{8}$	$1\frac{5}{8}$	$1\frac{5}{8}$	yds.
51cm	1.10	1.10	1.10	1.20	1.20	1.30	1.30	1.40	1.40	1.50	1.50	1.50	m.

FINISHED GARMENT MEASUREMENTS

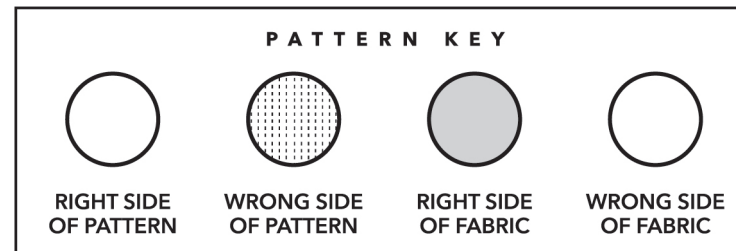
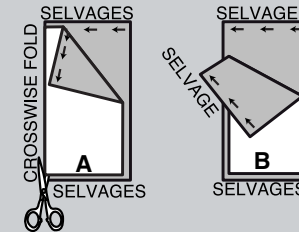
SIZES	16W	18W	20W	22W	24W	26W	28W	30W	32W	34W	36W	38W	
A,B BUST (C CUP)	41	43	45	47	49	51	53	55	57	59	61	63	yds.
	104	109	114	119	124	130	135	140	145	150	155	160	m.
A,B BUST (D CUP)	42	44	46	48	50	52	54	56	58	60	62	64	yds.
	107	112	117	122	127	132	137	142	147	152	157	163	m.
A,B BUST (DD CUP)	43	45	47	49	51	53	55	57	59	61	63	65	yds.
	109	114	119	124	130	135	140	145	150	155	160	165	m.
C WAIST	32	34	36	38	40	42	44	46	48	50	52	54	yds.
	81	86	91	97	102	107	112	117	122	127	132	137	m.
C HIP	40 ½	42 ½	44 ½	46 ½	48 ½	50 ½	52 ½	54 ½	56 ½	58 ½	60 ½	62 ½	yds.
	103	108	113	118	123	128	133	138	144	149	154	159	m.
FINISHED BACK LENGTH FROM BASE OF NECK													
BUSTIER A,B	16 ¾	17	17 ¼	17 ½	17 ¾	18	18 ¼	18 ½	18 ¾	19	19 ¼	19 ½	yds.
	43	43	44	44	45	46	46	47	48	48	49	50	m.
FINISHED SIDE LENGTH FROM WAIST													
SKIRT C	30	30	30	30	30	30	30	30	30	30	30	30	yds.
	76	76	76	76	76	76	76	76	76	76	76	76	m.
WIDTH, LOWER EDGE													
SKIRT C	37 ½	39 ½	41 ½	43 ½	45 ½	47 ½	49 ½	51 ½	53 ½	55 ½	57 ½	59 ½	yds.
	95	100	105	110	116	121	126	131	136	141	146	151	m.

BODY MEASUREMENTS

SIZES	16W	18W	20W	22W	24W	26W	28W	30W	32W	34W	36W	38W	
BUST	38	40	42	44	46	48	50	52	54	56	58	60	ins.
	97	102	107	112	117	122	127	132	137	142	147	152	cm.
WAIST	31	33	35	37	39	41½	44	46½	49	51½	54	56½	ins.
	79	84	89	94	99	105	112	118	124	131	138	144	cm.
HIP	40	42	44	46	48	50	52	54	56	58	60	62	ins.
	102	107	112	117	122	127	132	137	142	147	152	157	cm.
BACK-NECK TO WAIST	17	17⅞	17¼	17¾	17½	17⅞	17¾	17⅞	18	18⅞	18½	18¾	ins.
	43	43.5	44	44	44.5	45	45	45.5	46	46	47	47.5	cm.

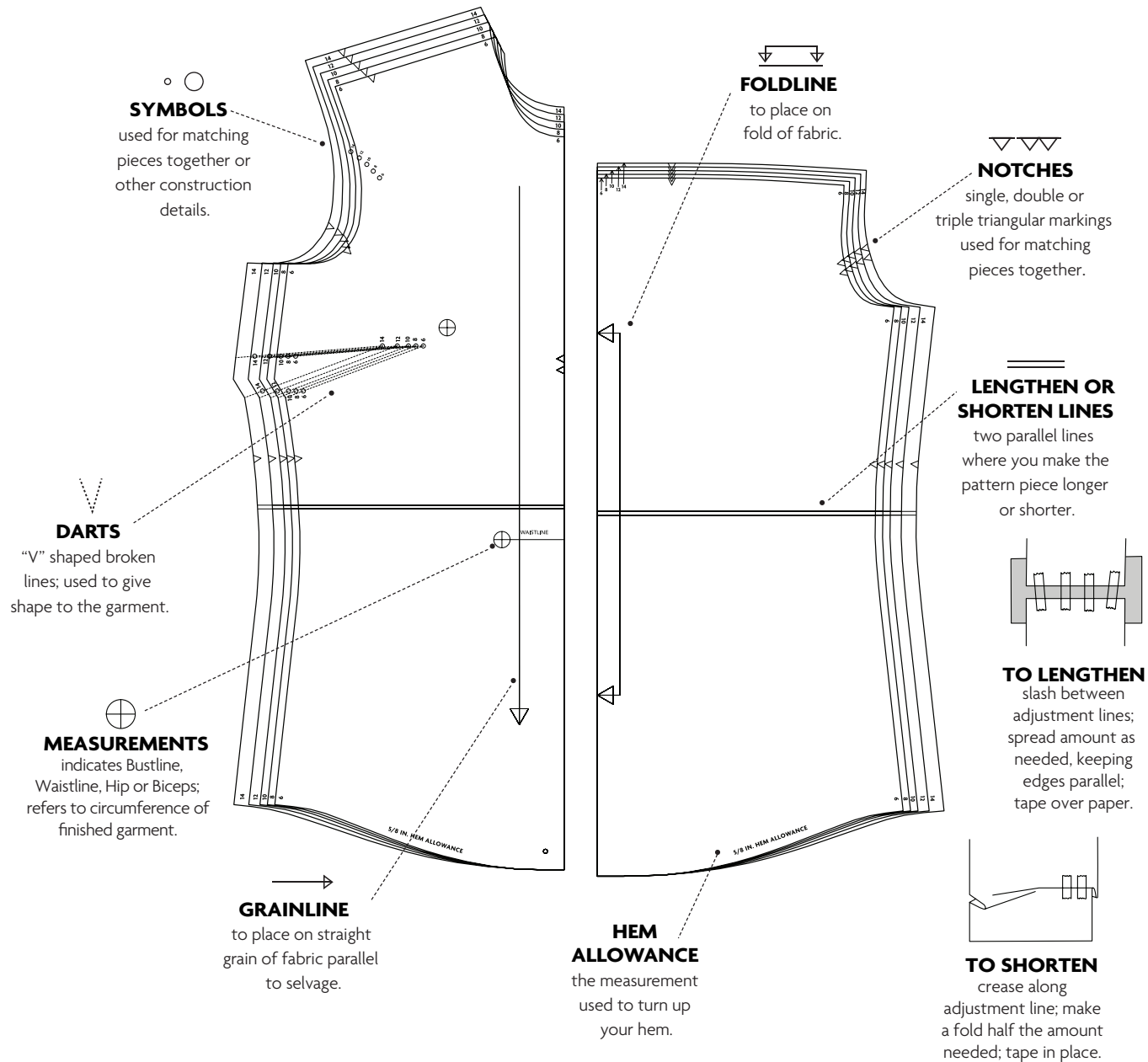
CUTTING AND MARKING

- > **SHRINK FABRIC** if not labeled pre-shrunk. Press.
- > **CIRCLE LAYOUT** for View, Size, Fabric Width.
- > Use **WITH NAP** layout for fabrics with one-way designs, nap, pile or surface shading. Because most knits have surface shading, a with nap layout is used.
- > For **DOUBLE THICKNESS (WITH FOLD)**, fold fabric with right sides together.
- > ***DOUBLE THICKNESS (WITHOUT FOLD)**, for fabrics with nap, fold fabric crosswise, right sides together. Mark as shown. Cut along crosswise fold of fabric (A). Turn upper layer 180° so arrows go in same direction and place over lower layer, right sides together (B).
- > For **SINGLE THICKNESS**, place fabric right side up. (For Fur Pile fabrics, place pile side down.)



- > Before **CUTTING**, place all pieces on fabric according to layout. Pin.
(Layouts show approximate position of pattern pieces; position may vary according to your pattern size.)
- > ★ Cut other pieces first, allowing enough fabric to cut this piece. Open fabric. Cut piece on single layer of fabric with piece face up on right side of fabric.
- > Cut accurately, cutting notches outward.
- > Before removing pattern, **TRANSFER MARKINGS** and lines of construction to **WRONG SIDE** of fabric, using Pin and Chalk Pencil method or Tracing Paper and Dressmaker Wheel. Markings needed on right side of fabric should be thread traced.
NOTE: Broken-line boxes (a! b! c!) in layouts represent pieces cut by measurements provided.
- > Prewash your fabric using a method that's suitable for the fabric type.
- > Fold fabric with right sides together, matching **SELVAGES**.
- > Pin your pattern pieces to the fabric as shown below and cut them out using a sharp pair of dressmaker's shears.

PATTERN MARKINGS



CUP SIZES C,D,DD(WOMENS')

To achieve the best results; before you cut your fabric, choose the

UPPER FRONT
pattern piece for your particular **cup size**.

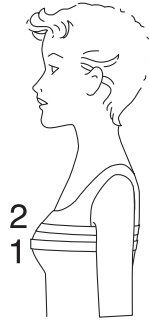
HOW TO CHECK YOUR CUP SIZE:

BUST (1)

Measure straight across the back and over the fullest part
of your bust _____

HIGH BUST (2)

Measure across the back high up under the arms and
across the top of your bust _____



SELECT PATTERN PIECES

C (WOMEN'S) CUP: If your bust is up to 1" (2.5cm) larger than your high
bust, use pattern pieces 1C, 2C and 3C.

D (WOMEN'S) CUP: If your bust is 1" to 2" (2.5cm to 5cm) larger than your
high bust, use pattern pieces 1D, 2D and 3D.

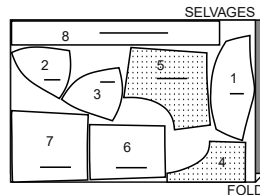
DD (WOMEN'S) CUP: If your bust is 2" to 3" (5cm to 7.5cm) larger than your
high bust, use pattern pieces 1DD, 2DD and 3DD.

CUTTING LAYOUTS

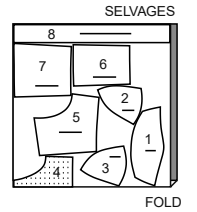
BUSTIER A

use pieces: 1(C,D or DD),2(C,D or DD),3(C,D, or DD),4,5,6,7,8

45" (115 cm)
with nap
all sizes



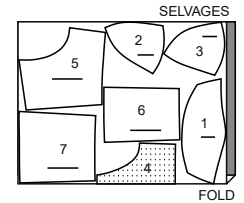
60" (150 cm)
with nap
all sizes



LINING A,B (FRONT AND BACK)

use pieces: 1(C,D or DD),2(C,D or DD),3(C,D, or DD),4,5,6,7

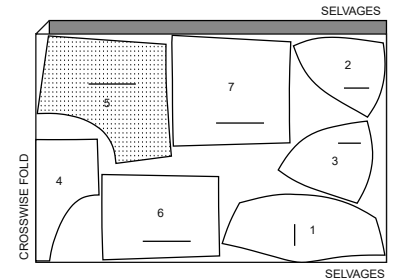
45" (115 cm)
without nap
all sizes



INTERFACING A,B

use pieces: 1(C,D or DD),2(C,D or DD),3(C,D, or DD),4,5,6,7

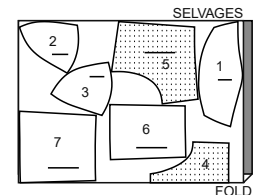
20" (51 cm)
all sizes



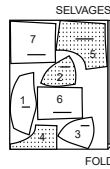
BUSTIER B

use pieces: 1(C,D or DD),2(C,D or DD),3(C,D, or DD),4,5,6,7

45" (115 cm)
with nap
all sizes



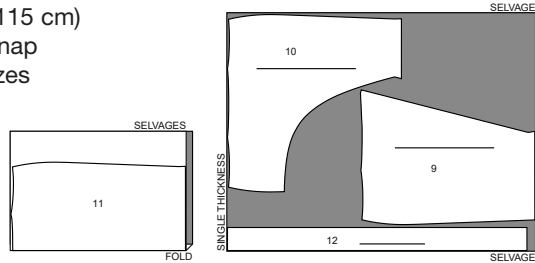
60" (150 cm)
with nap
all sizes



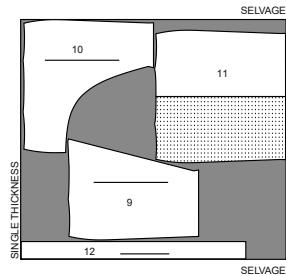
SKIRT C

use pieces: 9,10,11,12

45" (115 cm)
with nap
all sizes



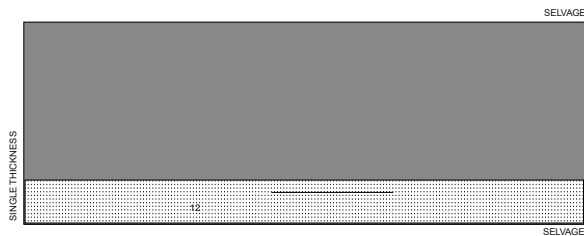
60" (150 cm)
with nap
all sizes



INTERFACING C

use piece: 12

20" (51 cm)
all sizes

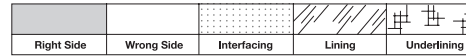


PATTERN PIECES WILL BE IDENTIFIED
BY NUMBERS THE FIRST TIME THEY ARE USED.

SEWING INFORMATION

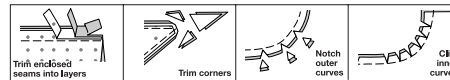
**5/8" (1.5cm) SEAM ALLOWANCES
ARE INCLUDED,**
(unless otherwise indicated)

ILLUSTRATION SHADING KEY



Pin or baste seams, right side together, matching notches. Fit garment before stitching major seams.

Press seam allowances flat; then open unless otherwise stated. Clip where necessary so they lie flat.



GLOSSARY

Sewing terms appearing in **BOLD TYPE** in Sewing Instructions are explained below.

EASESTITCH - Stitch along seamline, using long machine stitches. Pull thread ends when adjusting to fit.

NOTE: For sleeve caps, make a second row of long machine stitches 1/4" (6mm) away in seam allowance for more control.

NARROW HEM - Turn in hem; press, easing in fullness if necessary. Open out hem. Turn in again so raw edge is along crease; press. Turn in along crease; stitch.

SLIPSTITCH - Slide needle through a folded edge, then pick up a thread of underneath fabric.

STAYSTITCH - Stitch 1/8" (3mm) from seamline in seam allowance (usually 1/2" (13mm) from raw edge).

TOPSTITCH - On outside, stitch 1/4" (6mm) from edge, seam or previous stitching, using presser foot as guide, or stitch where indicated in instructions.

UNDERSTITCH - Open out facing or underside of garment; stitch to seam allowance close to seam.

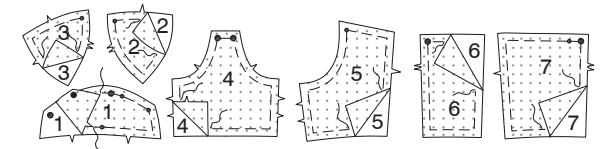


@needleandthebelle

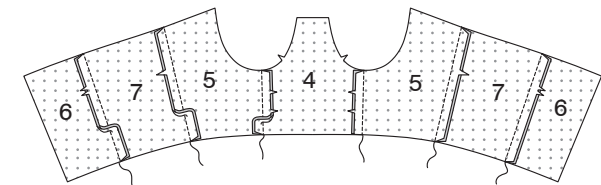
SEWING DIRECTIONS

BUSTIER A, B

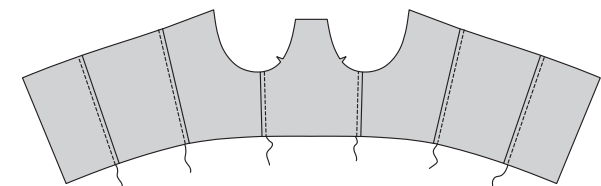
1. Baste **INTERFACING** to wrong side of each matching **FABRIC** section.



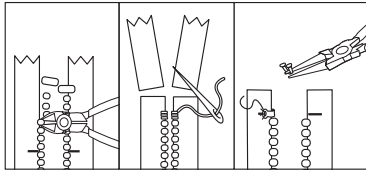
2. With right sides together, stitch side front sections (5) to front (4) at side edges, matching notches. Press seam toward front. Stitch side back (7) to side edges of side front; then stitch back (6) to side edges of side back. Press seams toward back. Stitch **LINING** sections together in same manner and set aside.



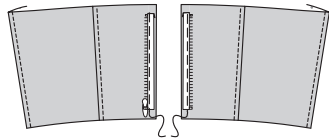
3. **TOPSTITCH** front, side back and back, as shown, catching in seam allowances on inside.



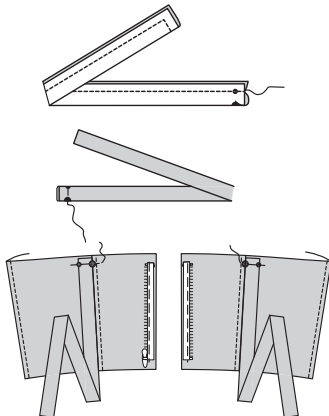
NOTE: It may be necessary to shorten zipper. To make new zipper stop, place closed zipper along opening edge, placing bottom zipper stop 1/8”(3mm) above seamline at lower edge of peplum. Mark placement of new top stop 1/8”(3mm) below seamline at upper edge. Open zipper. Remove teeth above marking for new top stop. Bend a straight metal eye with pliers and sew securely to each tape at new marking.



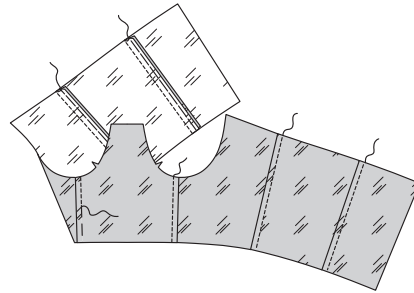
4. Open and separate zipper. On outside, pin zipper face down in seam allowances, along back opening edges, placing bottom stop 1/8”(3mm) above lower seamline and zipper teeth just over back seamline. Turn under upper edge of zipper tape below seam line. Baste.



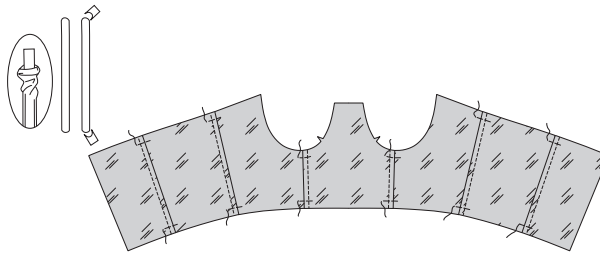
5. View A: With right sides together, fold shoulder strap (8) in half, matching small dots and having long edges even. Stitch, leaving marked edge open. Trim. Turn. Press. Baste raw edges together. On outside, pin one strap to upper edge of each side back, matching small and large dots, having raw edges even. Baste. Remaining straps will be attached to bra.



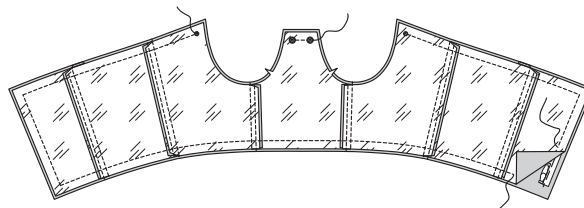
6. To form casings for boning, baste LINING seam allowances down 3/8”(1cm) from seam. On outside, stitch 3/8”(1cm) from seams through seam allowances, using basting as a guide.



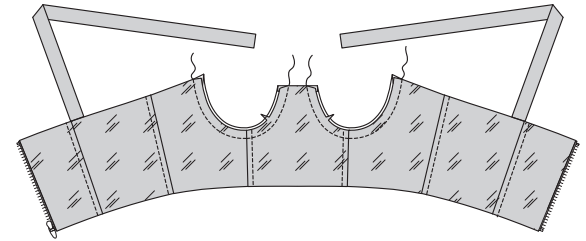
7. Remove boning from casing, if necessary. For side front seams: Cut boning 1-1/2”(3.8cm) shorter than the length of the seams. For remaining seams: Cut boning 2”(5cm) shorter than length of each seam. Round ends, as shown. Insert boning into casings. Baste across upper and lower edges of casings to prevent boning from slipping out.



8. With right sides together, pin lining to bustier, over zipper, matching centers, seams, and symbols, having raw edges even. Baste. Stitch upper, back, and lower edges between small dots on side front using a zipper foot. Stitch upper edge of front between large dots. Trim.

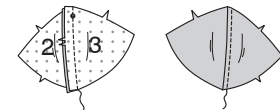


9. Turn lining to inside. Press. Baste raw edges together. **STAYSTITCH** curved edges.

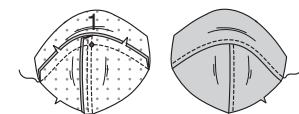


NOTE: Bra pattern pieces comes in 3 cup sizes: **C cup**, **D cup**, and **DD cup**. Illustrated for **C cup**.

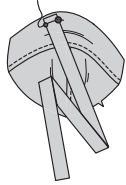
10. For lower half of bra, stitch bra (SIDE) (3) to bra front (2) matching double notches and small dots. Press seam allowances toward bra front. **TOPSTITCH** bra front.



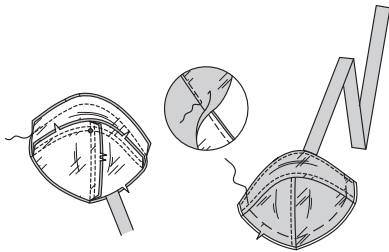
11. With right sides together, pin bra (TOP) (1) to lower half of bra, matching notches, and small dots. Stitch. Press seam toward bra top. **TOPSTITCH** bra top.



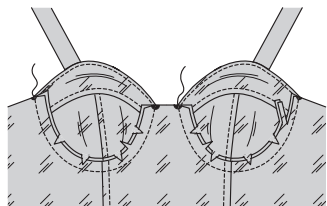
12. View A: Pin remaining straps to upper edge of each bra top, matching large and small dots, having raw edges even. Baste.



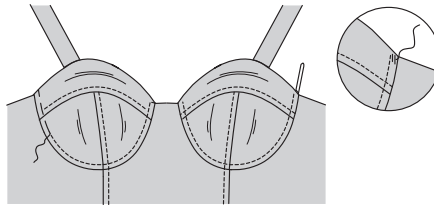
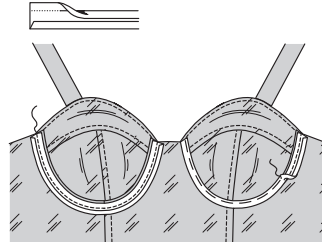
13. Stitch bra LINING sections together same as bra. With right sides together, pin lining to bra at upper edges (over strap for **View A**). Stitch upper edge. Trim. **UNDERSTITCH** lining. Turn right side out. Press. Baste raw edges.



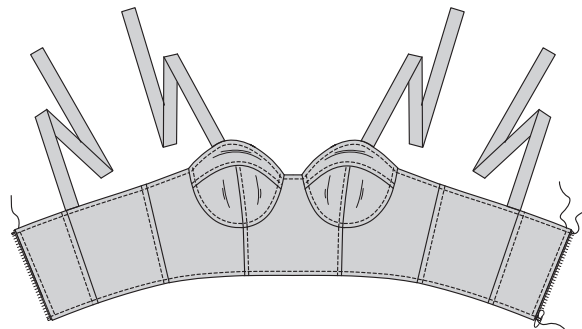
14. With right sides together, pin bra to bustier, matching notches, seams, and symbols, clipping to staystitching, as needed. Baste. Stitch. Trim seam to 3/8" (1cm).



15. Measure and cut two pieces of bias tape the length of the under-bra seams plus 1" (2.5cm). Open out narrower folded edge of tape. Press lightly. On lining side, pin tape to under bra seam, having crease along stitching, turning under 1/2" (1.3cm) on ends. Baste. Stitch along crease. Turn bra up. Turn seam allowances and bias tape toward bra. Press. To create channel for underwire, baste close to fold of bias tape through all layers. On outside, stitch bra using basting as a guide. Insert underwire through channel. **SLIPSTITCH** openings closed.

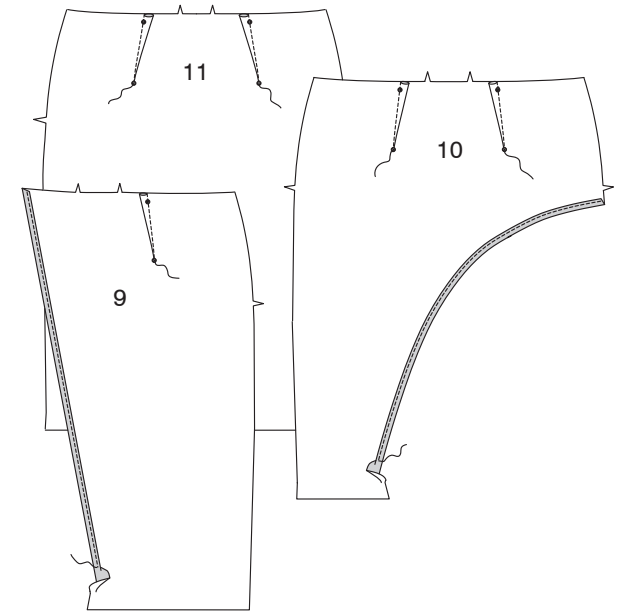


16. Using a zipper foot **TOPSTITCH** upper and lower edge of bustier. **TOPSTITCH** back edges.

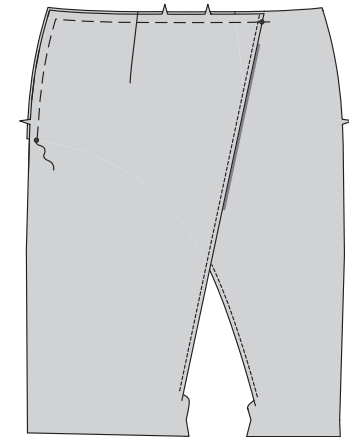


SKIRT

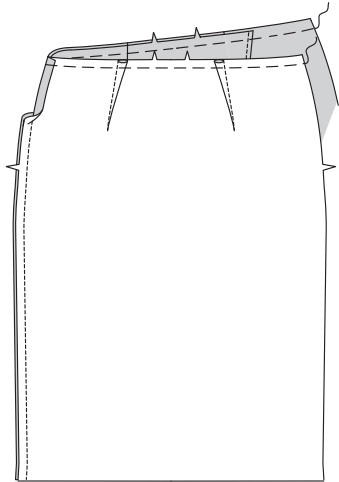
17. Stitch darts in right front (9), left front (10), and back (11). Make a **NARROW HEM** left side of right front and right side of left front stopping 3" (7.5cm) above lower edge.



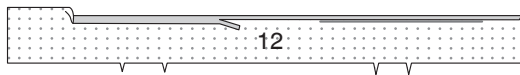
18. Lap right front over left front, matching centers and symbols. Baste upper and side edges.



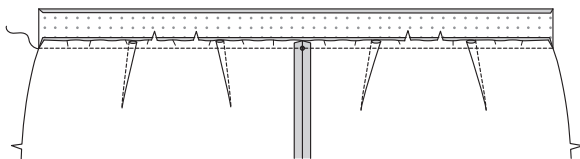
19. Pin front and back together at right side edges. Stitch. **EASESTITCH** upper edge of skirt.



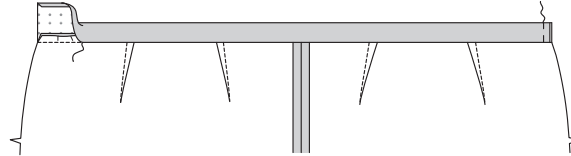
20. Fuse **INTERFACING** to wrong side of waistband (12). Turn under 5/8" (1.5cm) on long unnotched edge of waistband. Press. Trim pressed edge to 3/8" (1cm).



21. With right sides together, pin waistband to upper edge of skirt matching notches, centers, and small dot to side seam. Adjust ease. Baste. Stitch. Press seam toward waistband.

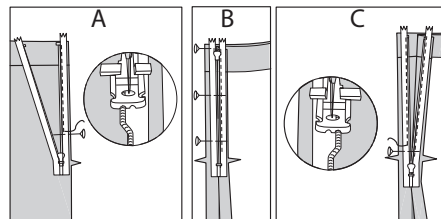


22. Turn waistband to inside along foldline; press. **SLIPSTITCH** pressed edge over seam. Baste across ends.



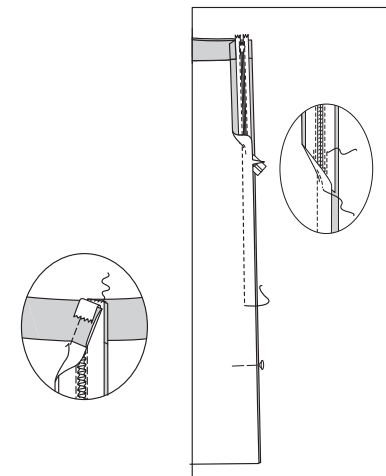
NOTE: Use special invisible zipper foot when stitching invisible zipper.

23. A- Open zipper. On outside, pin right side of zipper face down on left front side opening edge. Have the coil along the seamline, the tape within the seam allowance and the top stop 1/8" (3mm) below upper edge of waistband. Position left groove of foot over coil. Stitch along tape to the notch. Back-stitch to reinforce. B- Close zipper. Pin remaining zipper tape to left back side opening edge, placing zipper teeth on seamline. C- Open zipper. Position right groove of foot over coil. Stitch along tape to notch. Back-stitch to reinforce.

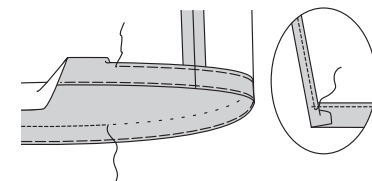


24. Close zipper and check that it is invisible from the **OUTSIDE**.

Pull the free ends of the zipper tape away from the seam allowance. Pin remaining right side seam together below zipper. Position zipper foot all the way to the **LEFT** so the needle goes down through the outer notch of the foot. Start stitching seam 1/4" (6mm) above lowest stitch and slightly to the **LEFT**. Stitch seam for about 3" (7.5cm). Stitch remainder of seam using your regular presser foot. If you prefer, open out each seam allowance at end of zipper and stitch tape to seam allowance. Turn upper ends of zipper tape over seam allowances. Hand-sew to waistband.



25. Turn up hem. Baste close to fold. Trim hem to an even width. Turn under 1/4" (6mm) on raw edge, press. Baste close to upper pressed edge. **TOPSTITCH** hem in place along upper basting, as shown. Make a **NARROW HEM** on remainder of front opening edges connecting with previous stitching.





Congrats!


You've completed your sewing adventure!

SHARE YOUR look!



Post your pattern and tag us at
@knowmepatterns and use #knowmepatterns
for a chance to be featured on our social media!

Look for more Know Me PDF patterns at [SomethingDelightful.com/know-me/](https://www.somethingdelightful.com/know-me/)

 1-800-255-2762

© 2023 KnowMe® an IG Design Group Americas, Inc. brand. | All Rights Reserved.
Sold for individual home use only and not for commercial or manufacturing purposes.