



SCAN QR CODE
 FOR A
 STEP-BY-STEP
 VIDEO TUTORIAL

@duana_m_chandler



>> MISSES' DRESS, TOP
 AND SHORTS
 SKILL LEVEL: AVERAGE



PDF PATTERNS

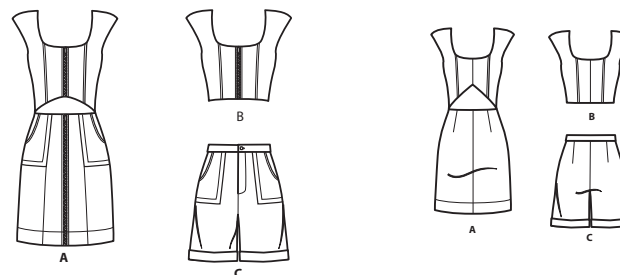
THINGS YOU NEED:

> **A,B:** 1¾ yds. (1.5m) of ¾" (1cm) featherweight boning. **Also for A:** One 9" (23cm) separating zipper (for top), one 20" (51cm) separating zipper (for skirt). **Also for B:** One 12" (30cm) separating zipper. **C:** One 7" (18cm) zipper (adjust to fit), one ¾" (2cm) button.

SUGGESTED FABRICS:

> Chambray, Cotton Blends, Gingham, Twill, Denim, Linen Blends.

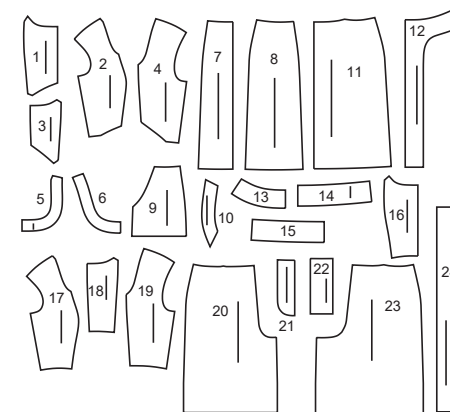
Lining: Polyester, Cotton Blends. **Interfacing:** Lightweight Fusible.



Your printed tile pieces should be assembled before you move on to this step!

PIECES (24)

- 1 BODICE FRONT-A
- 2 BODICE SIDE FRONT-A
- 3 BODICE BACK-A
- 4 BODICE SIDE BACK-A
- 5 FRONT INTERFACING-A,B
- 6 BACK INTERFACING-A,B
- 7 SKIRT FRONT-A
- 8 SKIRT SIDE FRONT-A
- 9 POCKET-A,C
- 10 POCKET FACING-A,C
- 11 SKIRT BACK-A
- 12 FRONT FACING-A
- 13 UPPER BACK FACING-A
- 14 LOWER FRONT FACING-A
- 15 LOWER BACK FACING-A
- 16 FRONT-B
- 17 SIDE FRONT-B
- 18 BACK-B
- 19 SIDE BACK-B
- 20 FRONT-C
- 21 LEFT FLY FACING-C
- 22 RIGHT FLY-C
- 23 BACK-C
- 24 WAISTBAND-C



YARDAGE CHARTS

SIZES	8	10	12	14	16	18	20	22	24	26	
DRESS A											
45"*	1 $\frac{7}{8}$	1 $\frac{7}{8}$	1 $\frac{7}{8}$	1 $\frac{7}{8}$	2	2 $\frac{1}{4}$	2 $\frac{1}{4}$	2 $\frac{1}{4}$	2 $\frac{3}{8}$	2 $\frac{3}{8}$	yds.
60"*	1 $\frac{3}{8}$	1 $\frac{1}{2}$	1 $\frac{1}{2}$	1 $\frac{1}{2}$	1 $\frac{1}{2}$	1 $\frac{3}{4}$	1 $\frac{3}{4}$	1 $\frac{3}{4}$	1 $\frac{7}{8}$	1 $\frac{7}{8}$	"
115cm*	1.80	1.80	1.80	1.80	1.90	2.10	2.10	2.10	2.10	2.20	m.
150cm*	1.30	1.30	1.30	1.40	1.40	1.60	1.60	1.60	1.80	1.80	"
LINING											
45"*	$\frac{5}{8}$	$\frac{5}{8}$	$\frac{3}{4}$	$\frac{3}{4}$	$\frac{3}{4}$	$\frac{3}{4}$	1	1	1	1	yds.
115cm**	0.60	0.60	0.60	0.70	0.70	0.70	1.00	1.00	1.00	1.00	m.
INTERFACING											
20"	1 $\frac{3}{8}$	1 $\frac{3}{8}$	1 $\frac{1}{2}$	1 $\frac{1}{2}$	1 $\frac{1}{2}$	1 $\frac{1}{2}$	1 $\frac{1}{2}$	1 $\frac{1}{2}$	1 $\frac{1}{2}$	1 $\frac{5}{8}$	yds.
51cm	1.30	1.30	1.30	1.40	1.40	1.40	1.40	1.40	1.40	1.40	m.
TOP B											
45"*	$\frac{3}{4}$	$\frac{3}{4}$	$\frac{3}{4}$	$\frac{3}{4}$	$\frac{7}{8}$	$\frac{7}{8}$	1	1	1	1	yds.
60"*	$\frac{5}{8}$	$\frac{5}{8}$	$\frac{5}{8}$	$\frac{5}{8}$	$\frac{5}{8}$	$\frac{5}{8}$	$\frac{5}{8}$	$\frac{5}{8}$	$\frac{3}{4}$	$\frac{7}{8}$	"
115cm*	0.70	0.70	0.70	0.70	0.70	0.80	1.00	1.00	1.00	1.00	m.
150cm*	0.60	0.60	0.60	0.60	0.60	0.60	0.60	0.60	0.70	0.70	"
LINING											
45"*	$\frac{3}{4}$	$\frac{3}{4}$	$\frac{3}{4}$	$\frac{3}{4}$	$\frac{7}{8}$	$\frac{7}{8}$	1	1	1	1	yds.
115cm**	0.70	0.70	0.70	0.70	0.70	0.80	1.00	1.00	1.00	1.00	m.
INTERFACING											
20"	$\frac{3}{8}$	$\frac{3}{8}$	$\frac{3}{8}$	$\frac{3}{8}$	$\frac{3}{8}$	$\frac{3}{8}$	$\frac{1}{2}$	$\frac{1}{2}$	$\frac{1}{2}$	$\frac{1}{2}$	yds.
51cm	0.40	0.40	0.40	0.40	0.40	0.40	0.40	0.40	0.40	0.40	m.
SHORTS C											
45"*	1 $\frac{3}{8}$	1 $\frac{3}{8}$	1 $\frac{3}{8}$	1 $\frac{3}{8}$	1 $\frac{3}{8}$	1 $\frac{3}{4}$	1 $\frac{3}{4}$	1 $\frac{3}{4}$	1 $\frac{3}{4}$	1 $\frac{3}{4}$	yds.
60"*	1	1	1 $\frac{1}{8}$	1 $\frac{1}{8}$	1 $\frac{3}{8}$	1 $\frac{3}{8}$	1 $\frac{3}{8}$	1 $\frac{3}{8}$	1 $\frac{1}{2}$	1 $\frac{1}{2}$	"
115cm*	1.30	1.30	1.30	1.30	1.30	1.50	1.60	1.60	1.60	1.60	m.
150cm*	1.00	1.00	1.00	1.10	1.30	1.30	1.30	1.30	1.30	1.40	"
INTERFACING											
20"	1	1	1	1 $\frac{1}{8}$	1 $\frac{1}{8}$	1 $\frac{1}{8}$	1 $\frac{1}{4}$	1 $\frac{1}{4}$	1 $\frac{3}{8}$	1 $\frac{3}{8}$	yds.
51cm	0.80	1.00	1.00	1.00	1.10	1.10	1.20	1.20	1.30	1.30	m.

FINISHED GARMENT MEASUREMENTS

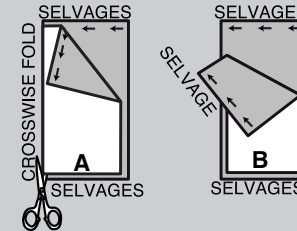
SIZES	8	10	12	14	16	18	20	22	24	26	
A,B BUST	34½	35½	37	39	41	43	45	47	49	51	in.
	88	90	94	99	104	109	114	119	124	130	cm.
C WAIST	26	27	28½	30½	32½	34½	36½	38½	40½	42½	in.
	66	69	72	77	83	88	93	98	103	108	cm.
A,C HIP	37	38	39½	41½	43½	45½	47½	49½	51½	53½	in.
	94	97	100	105	110	116	121	126	131	136	cm.
WIDTH, LOWER EDGE											
DRESS A	40½	41½	43	45	47	49	51	53	55	57	in.
	103	105	109	114	119	124	130	135	140	145	cm.
FINISHED BACK LENGTH FROM BASE OF NECK											
DRESS A	35¾	36	36¼	36½	36¾	37	37¼	37½	37¾	38	in.
	91	91	92	93	93	94	95	95	96	97	cm.
TOP B	14¾	15	15¼	15½	15¾	16	16¼	16½	16¾	17	in.
	37	38	39	39	40	41	41	42	43	43	cm.
FINISHED SIDE LENGTH FROM WAIST											
SHORTS C	16¼	16½	16¾	17	17¼	17½	17¾	18	18¼	18½	in.
	41	42	43	43	44	44	45	46	46	47	cm.
WIDTH, EACH LEG											
SHORTS C	25¾	26½	27½	28¾	30	31¼	32½	33¾	35	36¼	in.
	65	67	70	73	76	79	83	86	89	92	cm.

BODY MEASUREMENTS

SIZES	8	10	12	14	16	18	20	22	24	26	
BUST	31½	32½	34	36	38	40	42	44	46	48	in.
	80	83	87	92	97	102	107	112	117	122	cm.
WAIST	24	25	26½	28	30	32	34	37	39	41	in.
	61	64	67	71	76	81	87	94	99	104	cm.
HIP-9" (23CM) BELOW WAIST	33½	34½	36	38	40	42	44	46	48	50	in.
	85	88	92	97	102	107	112	117	122	127	cm.
BACK-NECK TO WAIST	15¾	16	16¼	16½	16¾	17	17¼	17½	17¾	18	in.
	40	40.5	41.5	42	42.5	43	44	44.5	45	46	cm.

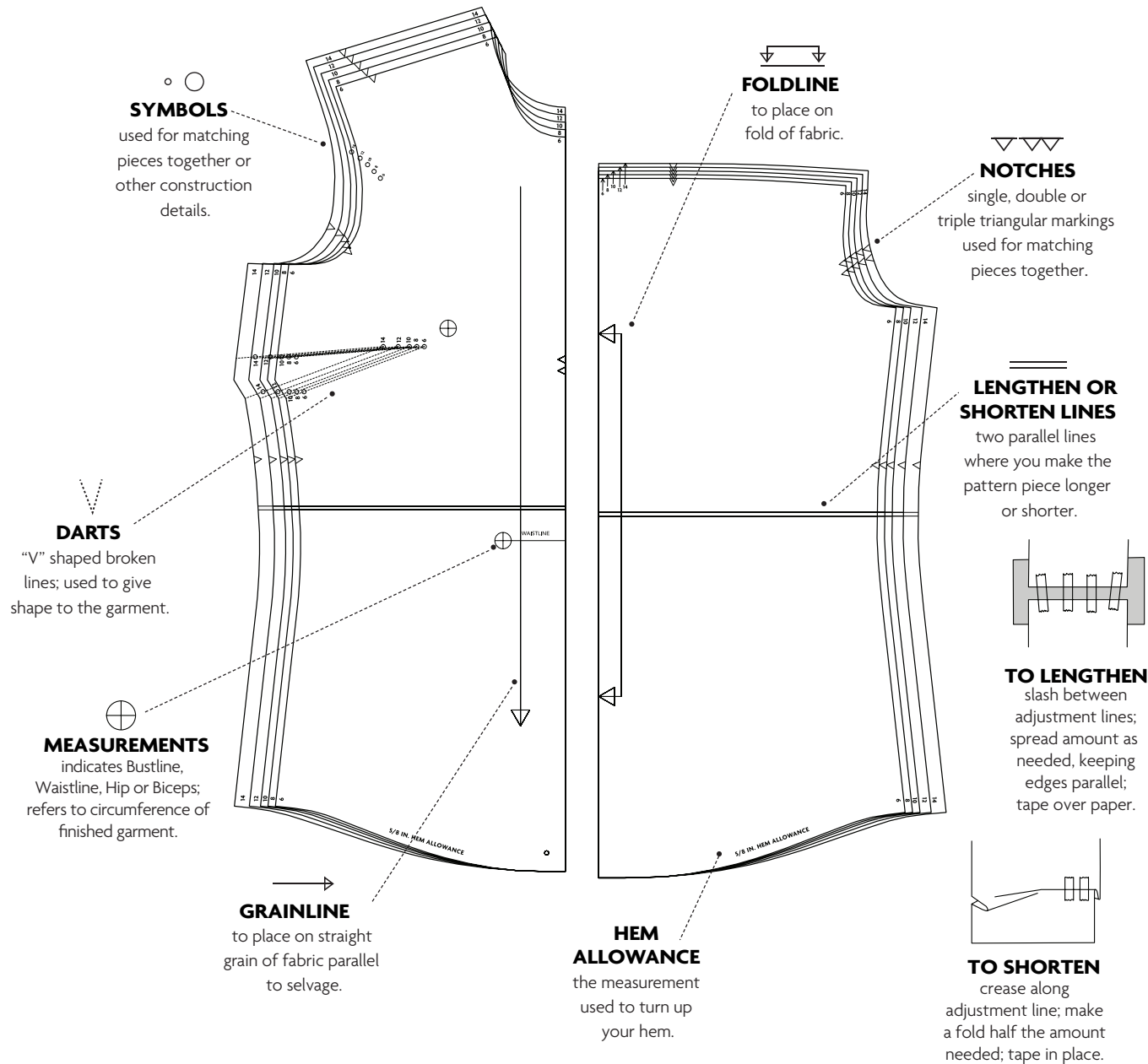
CUTTING AND MARKING

- > **SHRINK FABRIC** if not labeled pre-shrunk. Press.
- > **CIRCLE LAYOUT** for View, Size, Fabric Width.
- > Use **WITH NAP** layout for fabrics with one-way designs, nap, pile or surface shading. Because most knits have surface shading, a with nap layout is used.
- > For **DOUBLE THICKNESS (WITH FOLD)**, fold fabric with right sides together.
- > ***DOUBLE THICKNESS (WITHOUT FOLD)**, for fabrics with nap, fold fabric crosswise, right sides together. Mark as shown. Cut along crosswise fold of fabric (A). Turn upper layer 180° so arrows go in same direction and place over lower layer, right sides together (B).
- > For **SINGLE THICKNESS**, place fabric right side up. (For Fur Pile fabrics, place pile side down.)



- > Before **CUTTING**, place all pieces on fabric according to layout. Pin.
(Layouts show approximate position of pattern pieces; position may vary according to your pattern size.)
- > ★ Cut other pieces first, allowing enough fabric to cut this piece. Open fabric. Cut piece on single layer of fabric with piece face up on right side of fabric.
- > Cut accurately, cutting notches outward.
- > Before removing pattern, **TRANSFER MARKINGS** and lines of construction to **WRONG SIDE** of fabric, using Pin and Chalk Pencil method or Tracing Paper and Dressmaker Wheel. Markings needed on right side of fabric should be thread traced.
NOTE: Broken-line boxes (a! b! c!) in layouts represent pieces cut by measurements provided.
- > Prewash your fabric using a method that's suitable for the fabric type.
- > Fold fabric with right sides together, matching **SELVAGES**.
- > Pin your pattern pieces to the fabric as shown below and cut them out using a sharp pair of dressmaker's shears.

PATTERN MARKINGS

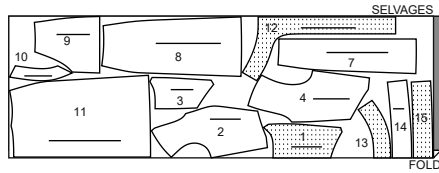


CUTTING LAYOUTS

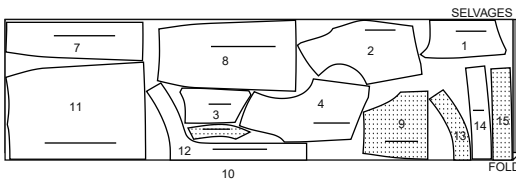
DRESS A

use pieces: 1 2 3 4 7 8 9 10 11 12 13 14 15

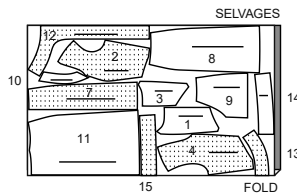
45" (115 cm)
with nap
sizes 8 10 12 14 16



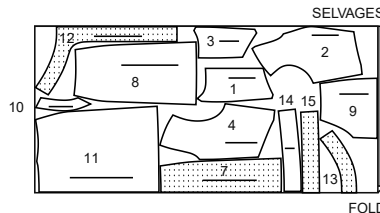
45" (115 cm)
with nap
sizes 18 20 22 24 26



60" (150 cm)
with nap
sizes 8 10 12 14 16



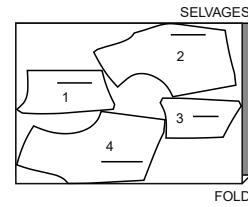
60" (150 cm)
with nap
sizes 18 20 22 24 26



LINING A

use pieces: 1 2 3 4

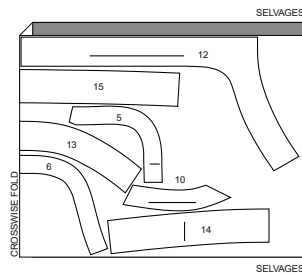
45" (115 cm)
without nap
all sizes



INTERFACING A

use pieces: 5 6 10 12 13 14 15

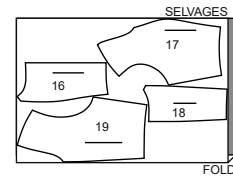
20" (51 cm)
without nap
all sizes



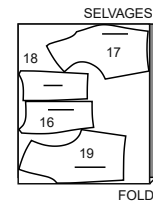
TOP B

use pieces: 16 17 18 19

45" (115 cm)
with nap
all sizes



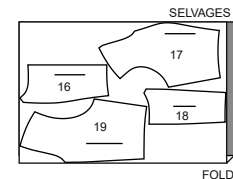
60" (150cm)
with nap
all sizes



LINING B

use pieces: 16 17 18 19

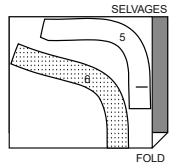
45" (115 cm)
without nap
all sizes



INTERFACING B

use pieces: 5 6

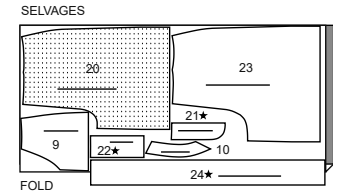
20" (51 cm)
without nap
all sizes



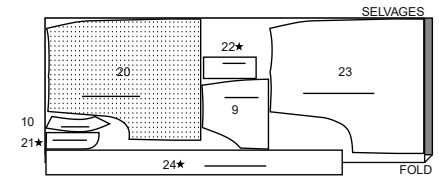
SHORTS C

use pieces: 9 10 20 21 22 23 24

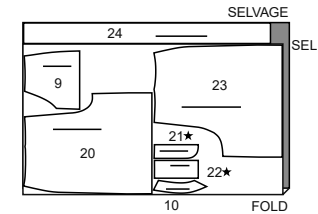
45" (115 cm)
with nap
sizes 8 10 12 14 16



45" (115 cm)
with nap
sizes 18 20 22 24 26



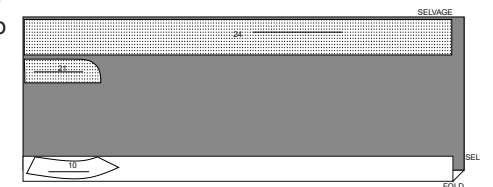
60" (150cm)
with nap
all sizes



INTERFACING C

use pieces: 10 21 24

20" (51 cm)
without nap
all sizes



PATTERN PIECES WILL BE IDENTIFIED BY NUMBERS THE FIRST TIME THEY ARE USED.

SEWING INFORMATION

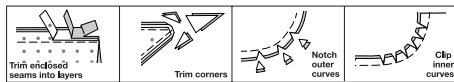
5/8" (1.5cm) SEAM ALLOWANCES ARE INCLUDED,
(unless otherwise indicated)

ILLUSTRATION SHADING KEY

Right Side	Wrong Side	Interfacing	Lining	Underlining

Pin or baste seams, right side together, matching notches. Fit garment before stitching major seams.

Press seam allowances flat; then open unless otherwise stated. Clip where necessary so they lie flat.



GLOSSARY

Sewing terms appearing in **BOLD TYPE** in Sewing Instructions are explained below.

DART- To make dart, with **RIGHT** sides together, fold the fabric through the center of the dart, bringing broken lines and small dots together. On **INSIDE**, place pins at **RIGHT** angles to the broken lines. Stitch the dart from wide end to point.

TIP- To prevent a “bubble” at the point, make the last few stitches right on the fold and leave the thread ends long enough to tie a knot. **DO NOT** back-stitch at the point.

Press the dart flat along the stitching to “blend” the stitches, then press dart as indicated in the Sewing Directions.

EDGE FINISH- Stitch 1/4” (6mm) from edge, turn under edge along stitching and stitch or zig-zag, or overlock/serge raw edges.

INTERFACING- Pin interfacing to **WRONG** side of fabric. Fuse interfacing in place following manufacturer’s directions.

STAY-STITCH- Stitch 1/2” (1.3cm) from cut edge in direction of arrows. This stitching stays in permanently to prevent stretching on curved edges. (Shown only in the first illustration).

UNDERSTITCH- Press facing and seam away from garment, stitching through facing and seam allowances close to seam.



@duana_m_chandler

SEWING DIRECTIONS

GENERAL DIRECTIONS FOR BONING

A. Press seam in direction indicated in sewing instructions. To form casings for boning, stitch seams 3/8” (1cm) from first stitching within the seam allowance, stitching through all thicknesses.

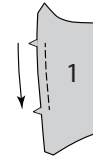
B. Cut four strips of boning each the length of stitched casing, excluding upper and lower seam allowances. Remove boning from cover. Trim 1/4” (6mm) of boning from each end, curving ends, as shown.

C. Insert boning between seam allowances. Baste 5/8” (1.5cm) from upper and lower edges of casing, being careful not to catch in boning.

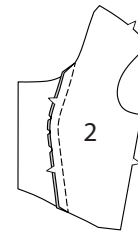
DRESS A

BODICE FRONT AND BACK

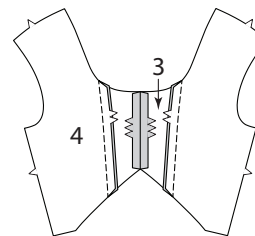
1. STAY-STITCH front edges of bodice front (1) between notches.



2. With **RIGHT** sides together, pin bodice side front (2) to front matching notches, clipping to stay-stitching if necessary. Baste. Stitch. Press seams toward front.



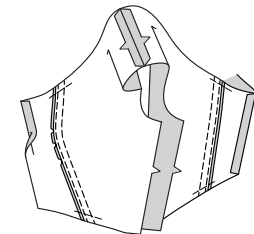
3. With **RIGHT** sides together stitch center back seam of back (3) sections. Stitch side back (4) sections to back matching notches. Press seam toward center back.



4. Top-stitch side front and side back seams and insert **BONING**. See **GENERAL DIRECTIONS FOR BONING**. Stitch side front to side back at shoulder seams.

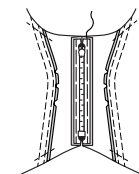
Press under 5/8” (1.5cm) on front edges of bodice.

NOTE : You may need to adjust the length of your Separating Zipper. Always shorten separating zippers from the top. Measure **RIGHT** front opening edge from 7/8” (2.2cm) above lower raw edge to 7/8” (2.2cm) below upper edge. Mark the desired length on the zipper tape, measuring from the lower edge of the bottom stop. Cut off extra zipper 7/8” (2.2cm) above mark, making sure that the zipper pull is well below where you are going to cut. Do not discard the pieces. Using pliers, remove the teeth above your shortening mark and pry the top-stops open and remove them from the discarded pieces of zipper. Reinstall top stops by crimping them in place immediately above the last remaining tooth. For plastic zippers, you may need to purchase a top stop.



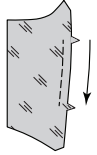
5. Pin closed zipper (face down) under pressed edges, centering top and bottom stops between large dots, having pressed edges clear zipper teeth, exposing 1/8” (6mm) of zipper tape. Baste, using an adjustable zipper foot.

NOTE: Be sure to keep the pull tab in the down position until after lining is stitched in place.



LINING

6. STAY-STITCH side edges of front lining sections between notches.



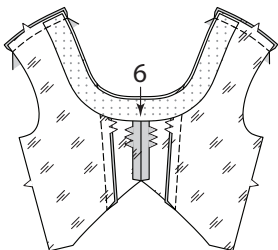
7. With RIGHT sides together, stitch front to side front lining matching notches. Clip to stay-stitching if necessary. Press seams open.

Pin front interfacing (5) to WRONG side of front lining sections, having raw edges even. Fuse in place following manufacturer's directions.



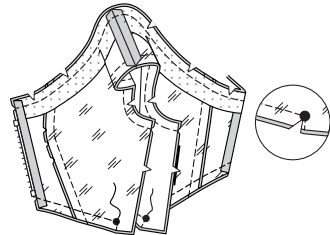
8. Stitch side back seams in lining sections same as for bodice, omitting boning. On INSIDE, fuse back interfacing (6) to neck edge of back lining, in same manner as front.

Stitch front to back lining sections at shoulder seams.



9. Press under 5/8" (1.5cm) on front edges of lining. With RIGHT sides together, pin lining to bodice matching centers and seams, having raw edges even. Stitch neck and armhole edges. Stitch lower edge of bodice, beginning and ending at large dots, continuing stitching across seam allowance to raw edge. Clip to stitching at large dots, being careful not to clip through stitching.

Trim seams; clip curves.

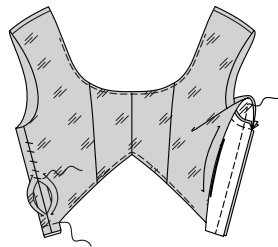


10. Turn bodice RIGHT side out through side openings, as shown; press.

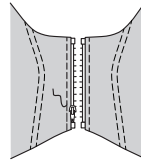
UNDERSTITCH bodice lining as far as possible. With RIGHT sides together and raw edges even, pin bodice and lining at sides, matching armhole seams and lower seams.

To stitch, begin on lining 1" (2.5cm) above armhole seam; stitch bodice seam and end on lining at lower edge. Press seam open.

Turn in seam allowances of remaining lining edges and slip-stitch together. Baste lower raw edges together.



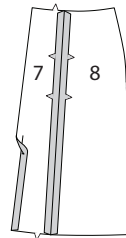
11. On OUTSIDE, top-stitch bodice front 1/4" (6mm) from pressed edge using an adjustable zipper foot.



SKIRT

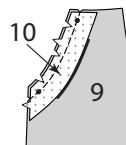
12. With RIGHT sides together, stitch skirt side front (8) to skirt front (7) sections matching notches.

Press under 5/8" (1.5cm) on front edges of skirt.



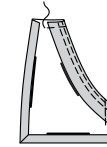
13. Apply **INTERFACING** to pocket facing (10).

With RIGHT sides together, stitch facing to pocket (9) sections matching notches and small dots. Trim seam, clip curves.



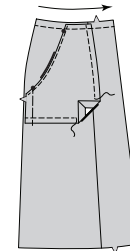
14. UNDERSTITCH pocket facing. Turn facing to INSIDE, press. Topstitch 1/4" (6mm) from finished edge.

Press under 3/4" (2cm) seam allowance on lower and front edges of pocket. Baste facing in place.



15. On OUTSIDE, pin pocket to front matching small dots. Top-stitch in place 1/2" (1.3cm) from pressed edge.

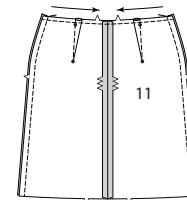
Baste raw edges together. **STAY-STITCH** upper edge of skirt front sections.



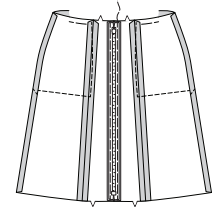
16. Make **DARTS** in skirt back (11) sections. Press toward center back.

With RIGHT sides together, stitch center back seam.

STAY-STITCH upper edge of skirt back. With RIGHT sides together, stitch skirt front to back at sides.

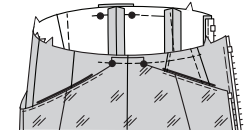


17. Pin closed zipper (face down) under front pressed edges, centering top and bottom stops between upper and lower seam allowances. Make sure pressed edges of front clear zipper teeth, exposing 1/8" (6mm) of zipper tape. Baste, using an adjustable zipper foot.



18. Separate bodice and skirt zippers.

On OUTSIDE, pin bodice to upper edge of skirt at side edges, matching large dots. Baste.



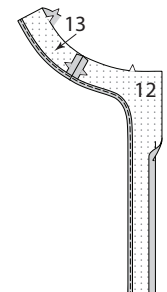
FACING

19. Apply **INTERFACING** to WRONG side of front facing (12) and back facing (13).

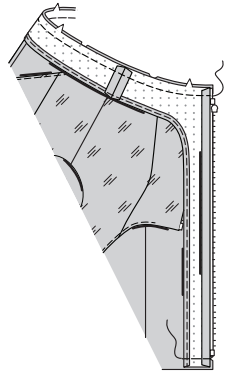
With RIGHT sides together, stitch side seams of front and back facing.

EDGE-FINISH lower edge of facing.

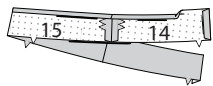
Press under 5/8" (1.5cm) on front edge. Baste.



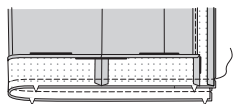
20. With RIGHT sides together, pin facing to garment (over bodice) clipping to stay-stitching if necessary. Stitch upper edge. Baste lower edges of facing.



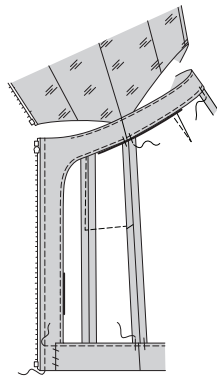
21. Apply **INTERFACING** to lower front facing (14) and lower back facing (15). With RIGHT sides together, stitch side seams of facing sections. Press under 3/8" (1cm) on unnotched edge. Press under 5/8" (1.5cm) on front edges of facing.



22. On OUTSIDE, pin lower facing to garment matching notches and large dots. Stitch upper and lower edges of skirt. Trim seam and corners. Clip curves.



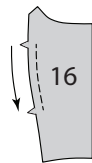
23. UNDERSTITCH upper and lower facings as far as possible. Turn facings to inside, pressing bodice out. Pin pressed edge of front facing over edge of zipper tape, clearing zipper teeth. On OUTSIDE, top-stitch front 1/4" (6mm) away from pressed edge using an adjustable zipper foot. Stitch lower facing in place, close to finished pressed edge, ending at zipper stitching. Slip-stitch edges of facings together. **TIP:** If you prefer, hand tack facing at side seams.



TOP B

FRONT AND BACK

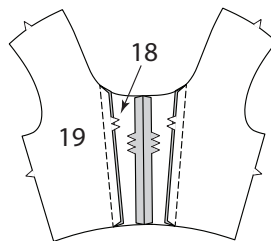
1. STAY-STITCH front edges of front (16) between notches.



2. With RIGHT sides together, pin bodice side front (17) to front matching notches, clipping to stay-stitching if necessary. Baste. Stitch. Press seams toward front.

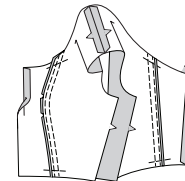


3. With RIGHT sides together stitch center back seam of back (18) sections. Stitch side back (19) sections to back matching notches. Press seam toward center back.



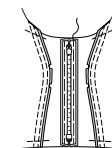
4. Top-stitch side front and side back seams and insert **BONING**. See **GENERAL DIRECTIONS FOR BONING**. Stitch side front to side back at shoulder seams. Turn under 5/8" (1.5cm) on front edges of bodice.

NOTE : You may need to adjust the length of your Separating Zipper. Always shorten separating zippers from the top. Measure RIGHT front opening edge from 7/8" (2.2cm) above lower raw edge to 7/8" (2.2cm) below upper edge. Mark the desired length on the zipper tape, measuring from the lower edge of the bottom stop. Cut off extra zipper 7/8" (2.2cm) above mark, making sure that the zipper pull is well below where you are going to cut. Do not discard the pieces. Using pliers, remove the teeth above your shortening mark and pry the top-stops open and remove them from the discarded pieces of zipper. Reinstall top stops by crimping them in place immediately above the last remaining tooth. For plastic zippers, you may need to purchase a top stop.



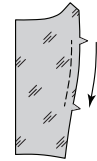
5. Pin closed zipper (face down) under pressed edges, centering top and bottom stops between large dots, having pressed edges clear zipper teeth, exposing 1/8" (6mm) of zipper tape. Baste, using an adjustable zipper foot.

NOTE: Be sure to keep the pull tab in the down position until after lining is stitched in place.



LINING

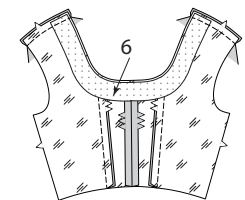
6. STAY-STITCH front edges of side front lining sections between notches, same as for bodice, omitting boning.



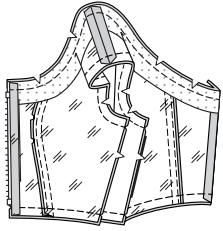
7. With RIGHT sides together, stitch front lining to side front lining matching notches. Clip to stay-stitching if necessary. Press seams toward center. Pin front interfacing (5) to WRONG side of front sections, having raw edges even. Fuse in place following manufacturer's directions.



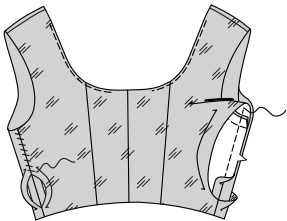
8. Stitch side back seams in lining sections same as for bodice omitting boning. On INSIDE, fuse back interfacing (6) to neck edge of back, in same manner as front. Stitch front to back lining sections at shoulder seams.



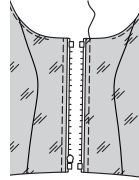
9. Press under 5/8" (1.5cm) on front edges of lining. With RIGHT sides together, pin lining to bodice matching centers and seams, having raw edges even. Stitch lining to bodice, leaving side seams open for turning. Trim seams and corners; clip curves.



10. Turn bodice RIGHT side out through side openings; press. **UNDERSTITCH** bodice lining as far as possible. With RIGHT sides together and raw edges even, pin bodice and lining at sides, matching armhole seams and lower seams. To stitch, begin on lining 1" (2.5cm) above armhole seam; stitch bodice seam and end on lining 1" (2.5cm) below lower seam edge. Press seam open. Turn in seam allowances of remaining lining edges at side seams and slip-stitch together.

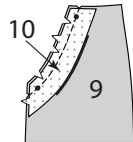


11. Pin pressed edge of front over zipper tape. On OUTSIDE, top-stitch bodice front 1/4" (6mm) from pressed edge using an adjustable zipper foot.

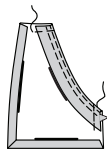


SHORTS C

1. Apply **INTERFACING** to pocket facing (10). With RIGHT sides together, stitch pocket facing to pocket (9) sections matching notches. Trim seam, clip curves.



2. UNDERSTITCH pocket facing. Turn facing to INSIDE, press. Topstitch 1/4" (6mm) from finished edge. Press under 3/4" (2cm) seam allowance on lower and side edges of pocket.



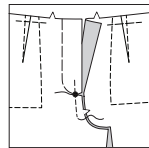
3. Make **DARTS** in front (20). Press darts toward center. **STAY-STITCH** upper edge of front sections.



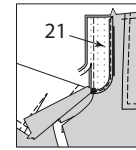
4. On OUTSIDE, pin pocket to front matching small dots. Top-stitch in place 1/2" (1.3cm) from pressed edges. Baste raw edges together. To reinforce LEFT front, stitch along seam line for about 1" (2.5cm) each side of large dot, stitching through dot, as shown. Transfer stitching line onto OUTSIDE LEFT front with a water soluble fabric marking pen onto by hand-basting. This will serve as a guide for the fly stitching later on.



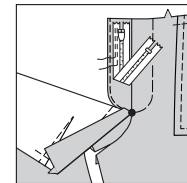
5. With RIGHT sides together, pin front sections, matching large dots. Stitch center front seam between notch and large dot. Back-stitch at dot to reinforce seam. Clip LEFT front to reinforced large dot, being careful not to clip through stitching.



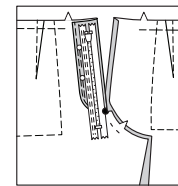
6. Apply **INTERFACING** to left fly facing (21). **EDGE-FINISH** curved edge of left fly. With RIGHT sides together, pin fly to LEFT front edge, matching large dots. Stitch above large dot; back-stitch at large dot to reinforce seam. Trim seam above large dot to 1/4" (6mm).



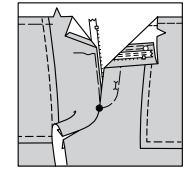
7. Open out fly facing. Place closed zipper face down over fly facing with tab end of zipper 1" (2.5cm) below upper edge and centering zipper tape 3/8" (1cm) from fly seam, as shown. Stitch close to zipper on LEFT edge of tape from upper edge as far as seam line on fly and 1/4" (6mm) away, as shown, using an adjustable zipper foot. Lower end of zipper will extend below lower end of fly. DO NOT trim away excess at this time.



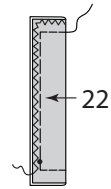
8. Turn fly to INSIDE; press. Pin fly in place. Press under 3/8" (1cm) on RIGHT front edge above large dot.



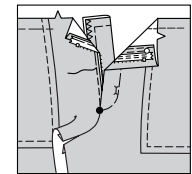
9. Open zipper. Pin RIGHT front over zipper tape close to teeth. Baste. When zipper is closed, the LEFT front will lap 1/4" (6mm) over RIGHT front. Close zipper and make sure zipper is aligned in both fronts.



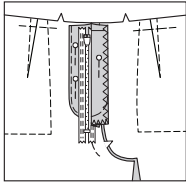
10. For underlap, fold right fly (22) in half, lengthwise, with WRONG sides together, having raw edges even. Machine-baste raw edges. Press. **EDGE-FINISH** raw edges.



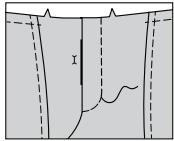
11. Open zipper. Pin RIGHT front edge over finished edge of underlap, having upper edges even and coil just over seam line. Baste through all thicknesses from upper edge to large dot. Close zipper and lightly press in place using a press cloth. On OUTSIDE, check to make sure that the fly and underlap lay smoothly in place. Open zipper and stitch RIGHT side in place as basted, using an adjustable zipper foot.



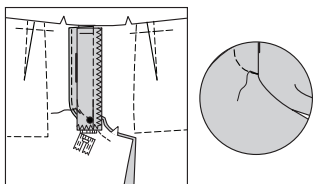
12. Close zipper. On **INSIDE**, fold underlap back and pin out of the way so that it will not get caught in the fly stitching.



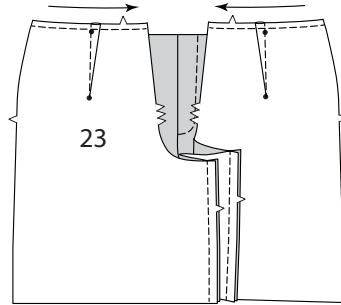
13. On **OUTSIDE**, hand-baste fly in place along the marked stitching line. Remove pins from fly. Stitch fly in place as basted, using an adjustable zipper foot; back-stitch at lower end to reinforce. Remove basting.



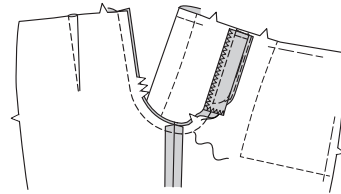
14. Turn underlap back in place. On **INSIDE**, hand-tack fly and underlap together at lower edge, as shown. Trim away excess zipper tape even with lower edge of fly. On **OUTSIDE**, machine-stitch a bar tack across lower end of fly through all thicknesses.



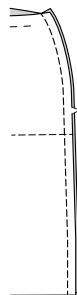
15. Make **DARTS** in back (23) sections. **STAY-STITCH** upper edge of back. Stitch front to back at inner leg seams.



16. With **RIGHT** sides together, pin remainder of center seam, matching inner leg seams and notches. Stitch. To reinforce seam, stitch again over first stitching. Trim seam in curved area to 1/4" (6mm). Press remaining seam open.



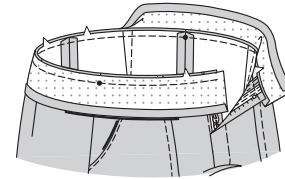
17. Stitch front to back at side seams.



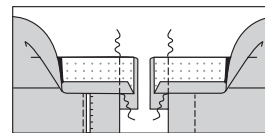
18. Apply **INTERFACING** to waistband (24). Press under 1/2" (1cm) on long unnotched edge of waistband.



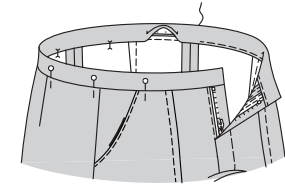
19. With **RIGHT** sides together, pin shorts to band, matching centers, placing side seams at small dots. Baste. Stitch. Trim seam. **DO NOT** trim seam allowance on waistband extensions. Press seam toward band, pressing band out.



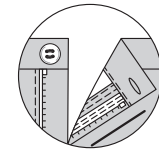
20. Fold band with **RIGHT** sides together. Turn waistband seam allowance down and open out pressed edge at ends of band so that raw edges are even. Pin. Stitch ends along seam line, as shown. Trim seams and corners.



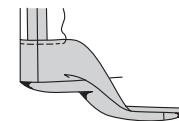
21. Turn ends **RIGHT** side out; press. On **INSIDE**, pin pressed edge of band over seam, placing pins on **OUTSIDE**. Pressed edge extends 1/8" (3mm) below seam. On **OUTSIDE**, stitch in the ditch or groove of waistband seam, catching in pressed edge of band on **INSIDE**.



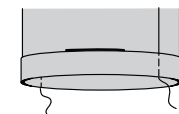
22. Make buttonhole in **LEFT** band at marking. Hand-sew button to **RIGHT** front at marking.



23. Press under 1/4" (6mm) on lower edge of shorts. Turn lower edge to **INSIDE**, along fold line. Press. Stitch close to inner pressed edge.



24. Turn 1-1/2" (1.3cm) on lower edge to **OUTSIDE**, forming cuff. Stitch in the ditch or "groove" of each leg seam to secure.





Congrats!


You've completed your sewing adventure!

**SHARE
YOUR** look!



Post your pattern and tag us at
@knowmepatterns and use #knowmepatterns
for a chance to be featured on our social media!

Look for more Know Me PDF patterns at [SomethingDelightful.com/know-me/](https://www.somethingdelightful.com/know-me/)

 1-800-255-2762

© 2023 KnowMe® an IG Design Group Americas, Inc. brand. | All Rights Reserved.
Sold for individual home use only and not for commercial or manufacturing purposes.