

@juliancreates



>> MEN'S KNIT BUTTON UP TOP
 AND PANTS
 SKILL LEVEL: AVERAGE



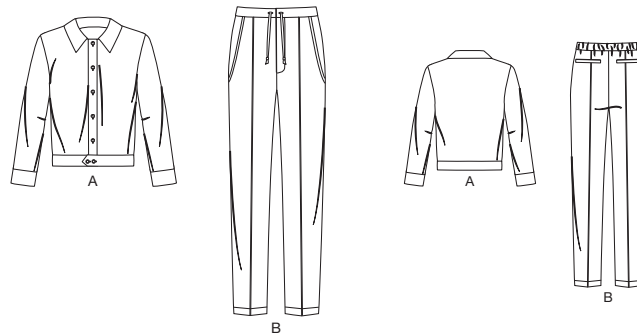
PDF PATTERNS

THINGS YOU NEED:

- > **A:** Seven 5/8" (1.5cm) buttons. **B:** One hook closure, 7" (18cm) zipper, 1 1/2 yds. (1.4m) of 1/4" (6mm) wide drawstring or twill tape, 5/8 yd. (0.6m) of 1" (2.5cm) wide elastic.

SUGGESTED FABRICS:

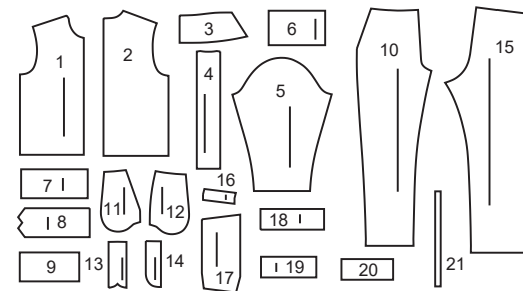
- > Stretch Knits only. **A:** Interlock, ITY, Bamboo, Rayon Blends.
 - B:** Double Knit, Ponte, Terry Knit. See Stretch Gauge.
- Interfacing:** Lightweight Fusible.



Your printed tile pieces should be assembled before you move on to this step!

PIECES (21)

- 1 FRONT - A
- 2 BACK - A
- 3 COLLAR - A
- 4 PLACKET - A
- 5 SLEEVE - A
- 6 SLEEVE BAND - A
- 7 RIGHT FRONT BAND - A
- 8 LEFT FRONT BAND - A
- 9 BACK BAND - A
- 10 FRONT - B
- 11 POCKET FACING - B
- 12 POCKET - B
- 13 RIGHT FLY - B
- 14 FLY FACING - B
- 15 BACK - B
- 16 WELT - B
- 17 BACK POCKET - B
- 18 RIGHT FRONT WAISTBAND - B
- 19 LEFT FRONT WAISTBAND - B
- 20 BACK CASING - B
- 21 GUIDE FOR ELASTIC - B



STRETCH GAUGE - MEASURING FABRIC STRETCH

Whenever you see a minimum stretch requirement on one of the sewing patterns, it is important that you measure the fabric stretch in both length and width!



YARDAGE CHARTS

SIZES	34	36	38	40	42	44	46	48	50	52	
TOP A											
60"*	1½	1½	1⅝	1⅝	1⅝	1⅝	1⅝	1⅝	1¾	1¾	yds.
150cm*	1.4	1.4	1.4	1.5	1.5	1.5	1.5	1.5	1.5	1.6	m.
CONTRAST (COLLAR, PLACKET, SLEEVE BANDS, LOWER BANDS)											
60" (150cm)*- ¾ yd. (0.7m.)											
INTERFACING											
20"	1⅜	1⅜	1⅜	1⅜	1½	1½	1½	1½	1½	1⅝	yds.
51cm	1.3	1.3	1.3	1.3	1.4	1.4	1.4	1.4	1.4	1.4	m.
PANTS B (WORN 1 ½" (3.8CM) BELOW WAIST)											
60"*	1⅞	1⅞	1⅞	1⅞	2	2	2¼	2¼	2¼	2⅜	yds.
150cm*	1.8	1.8	1.8	1.8	1.9	1.9	2.1	2.1	2.1	2.1	m.
INTERFACING											
20" (51cm) - ½ yd. (0.5m.)											

FINISHED GARMENT MEASUREMENTS

SIZES	34	36	38	40	42	44	46	48	50	52	
A CHEST	38	40	42	44	46	48	50	52	54	56	ins.
	97	102	107	112	117	122	127	132	138	143	cm.
A WAIST	36	38	40	42	44	46	48	50	52	54	ins.
	91	96	101	106	112	117	122	127	132	137	cm.
B HIP	36	38	40	42	44	46	48	50	52	54	ins.
	91	96	101	106	112	117	122	127	132	137	cm.

FINISHED GARMENT MEASUREMENTS CONTINUED

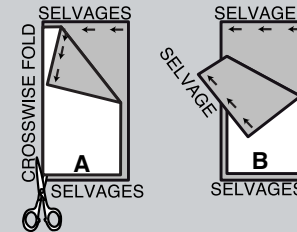
SIZES	34	36	38	40	42	44	46	48	50	52	
FINISHED BACK LENGTH FROM BASE OF NECK											
TOP A	25	25¼	25½	25¾	26	26¼	26½	26¾	27	27¼	ins.
	64	64	65	66	66	67	68	68	69	69	cm.
FINISHED SIDE LENGTH FROM WAIST											
PANTS B	41¾	42	42¼	42½	42¾	43	43¼	43½	43¾	44	ins.
	106	107	107	108	109	110	110	111	111	112	cm.
WIDTH, EACH LEG											
PANTS B	14	14½	15	15½	16	16½	17	17½	18	18½	ins.
	36	37	38	40	41	42	43	45	46	47	cm.

BODY MEASUREMENTS

SIZES	34	36	38	40	42	44	46	48	50	52	
CHEST	34	36	38	40	42	44	46	48	50	52	ins.
	87	92	97	102	107	112	117	122	127	132	cm.
WAIST	28	30	32	34	36	39	42	44	46	48	ins.
	71	76	82	87	92	99	107	112	117	122	cm.
HIP	35	37	39	41	43	45	47	49	51	53	ins.
	89	94	99	104	109	115	119	124	128	135	cm.

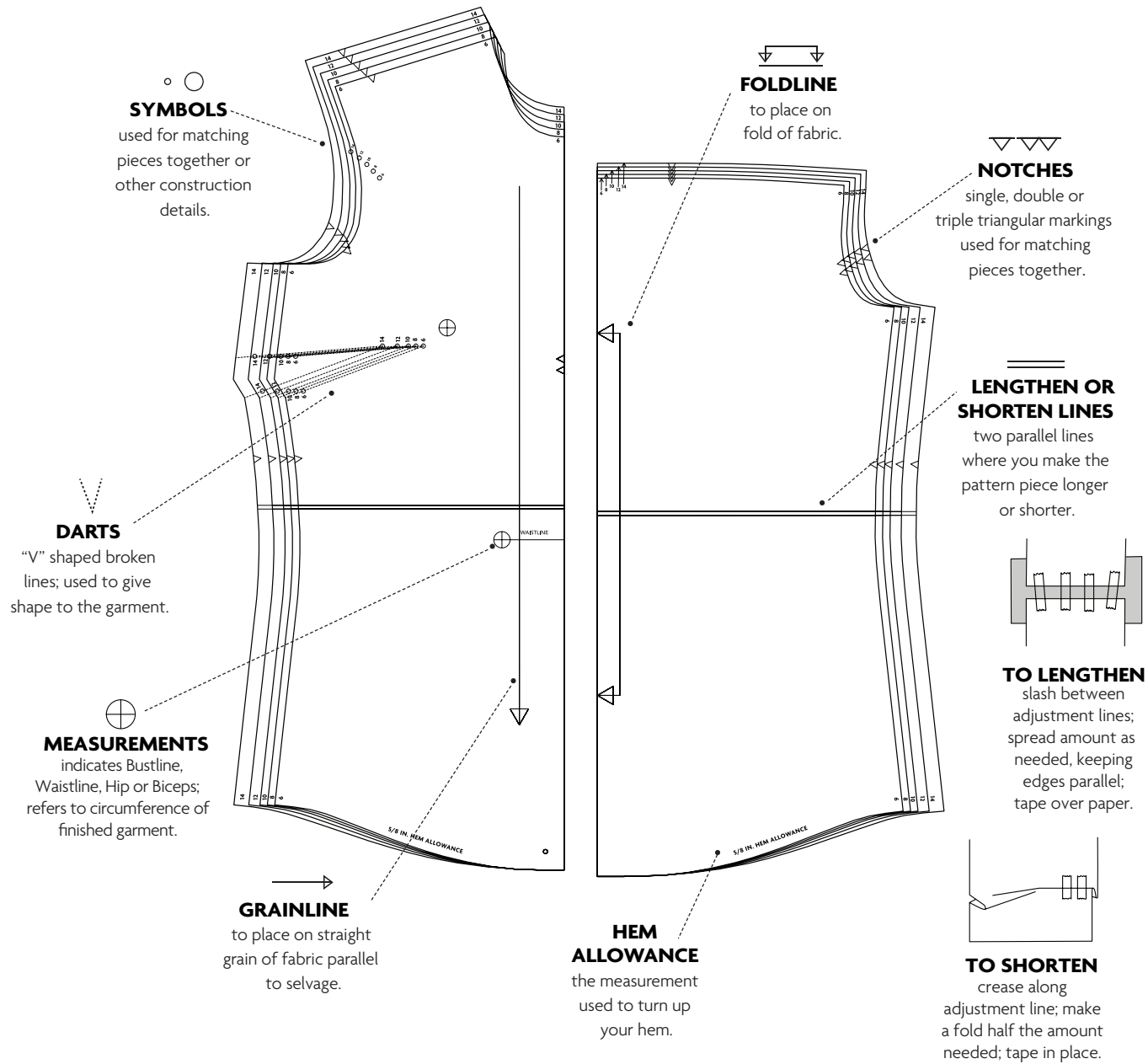
CUTTING AND MARKING

- > **SHRINK FABRIC** if not labeled pre-shrunk. Press.
- > **CIRCLE LAYOUT** for View, Size, Fabric Width.
- > Use **WITH NAP** layout for fabrics with one-way designs, nap, pile or surface shading. Because most knits have surface shading, a with nap layout is used.
- > For **DOUBLE THICKNESS (WITH FOLD)**, fold fabric with right sides together.
- > ***DOUBLE THICKNESS (WITHOUT FOLD)**, for fabrics with nap, fold fabric crosswise, right sides together. Mark as shown. Cut along crosswise fold of fabric (A). Turn upper layer 180° so arrows go in same direction and place over lower layer, right sides together (B).
- > For **SINGLE THICKNESS**, place fabric right side up. (For Fur Pile fabrics, place pile side down.)



- > Before **CUTTING**, place all pieces on fabric according to layout. Pin.
(Layouts show approximate position of pattern pieces; position may vary according to your pattern size.)
- > ★ Cut other pieces first, allowing enough fabric to cut this piece. Open fabric. Cut piece on single layer of fabric with piece face up on right side of fabric.
- > Cut accurately, cutting notches outward.
- > Before removing pattern, **TRANSFER MARKINGS** and lines of construction to **WRONG SIDE** of fabric, using Pin and Chalk Pencil method or Tracing Paper and Dressmaker Wheel. Markings needed on right side of fabric should be thread traced.
NOTE: Broken-line boxes (a! b! c!) in layouts represent pieces cut by measurements provided.
- > Prewash your fabric using a method that's suitable for the fabric type.
- > Fold fabric with right sides together, matching **SELVAGES**.
- > Pin your pattern pieces to the fabric as shown below and cut them out using a sharp pair of dressmaker's shears.

PATTERN MARKINGS

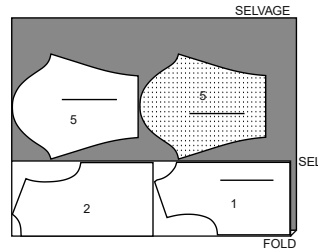


CUTTING LAYOUTS

TOP A

use pieces: 1,2,5

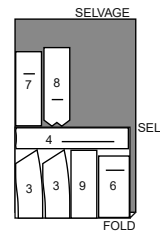
60" (150 cm)
with nap
all sizes



CONTRAST A (FRONT, BACK AND SLEEVE BANDS, COLLAR, PLACKET)

use pieces: 3,4,6,7,8,9

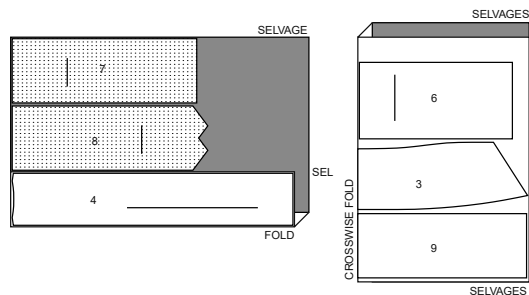
60" (150 cm)
with nap
all sizes



INTERFACING A (FRONT, BACK AND SLEEVE BAND, COLLAR, PLACKET)

use pieces: 3,4,6,7,8,9

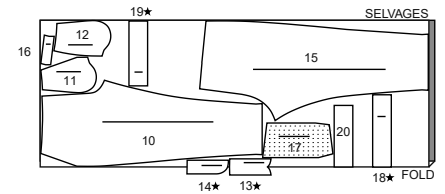
20" (51 cm)
all sizes



PANTS B

use pieces: 10,11,12,13,14,15,16,17,18,19,20

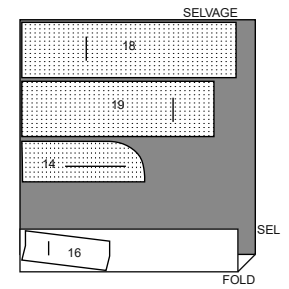
60" (150 cm)
with nap
all sizes



INTERFACING B (WAISTBAND, WELT, FLY FACING)

use pieces: 14,16,18,19

20" (51 cm)
all sizes



PATTERN PIECES WILL BE IDENTIFIED BY NUMBERS THE FIRST TIME THEY ARE USED.

SEWING INFORMATION

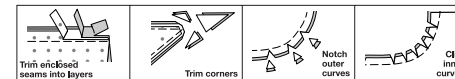
5/8" (1.5cm) SEAM ALLOWANCES ARE INCLUDED,
(unless otherwise indicated)

ILLUSTRATION SHADING KEY

Right Side	Wrong Side	Interfacing	Lining	Underlining

Pin or baste seams, right side together, matching notches. Fit garment before stitching major seams.

Press seam allowances flat; then open unless otherwise stated. Clip where necessary so they lie flat.



GLOSSARY

Sewing terms appearing in **BOLD TYPE** in Sewing Instructions are explained below.

EASESTITCH - Stitch along seamline, using long machine stitches. Pull thread ends when adjusting to fit.

NOTE: For sleeve caps, make a second row of long machine stitches 1/4"(6mm) away in seam allowance. for more control.

FINISH - Stitch 1/4"(6mm) from raw edge and finish with one of the following: (1) Pink OR (2) Overcast OR (3) Turn in along stitching and stitch close to fold OR (4) Overlock. OPTIONAL FOR HEMS: Apply Seam Binding.

REINFORCE - Stitch along seamline where indicated in sewing instructions, using small machine stitches.

SLIPSTITCH - Slide needle through a folded edge, then pick up a thread of underneath fabric.

TOPSTITCH - On outside, stitch 1/4"(6mm) from edge, seam or previous stitching, using presser foot as guide, or stitch where indicated in instructions.

UNDERSTITCH - Open out facing or underside of garment; stitch to seam allowance close to seam.



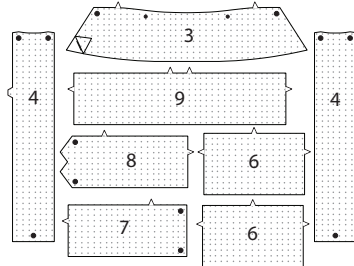
@juliancreates

SEWING DIRECTIONS

TOP A

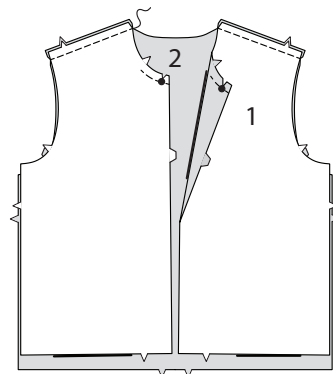
Interfacing

1. Pin INTERFACING to wrong side of each matching fabric section. Fuse, following manufacturer's instructions.

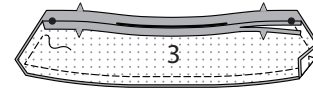


Front, Back and Collar

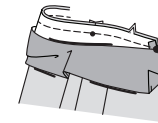
2. **REINFORCE FRONT** (1) at large dot. Clip to large dot being careful not to clip through stitching. With RIGHT sides together stitch front to BACK (2) at shoulder seams.



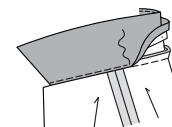
3. Press under 5/8"(1.5cm) on lower edge of interfaced COLLAR (3) section. Trim to 1/4"(6mm). With RIGHT sides together, stitch facing to collar leaving notched edge open, having raw edges even. Trim seam and corners.



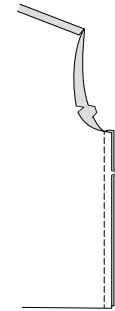
4. Turn collar RIGHT side out. Press. **UNDERSTITCH** collar facing. On OUTSIDE, pin collar to neck edge matching large dots, placing small dots at shoulder seam. Baste. Stitch, keeping pressed edge of collar free. Trim.



5. Press seam toward collar, pressing collar out. Pin pressed edge of collar over seam placing pins on OUTSIDE. On OUTSIDE, stitch collar close to seam, catching in pressed edge of collar on INSIDE.

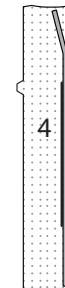


6. Stitch front to back at side seams.

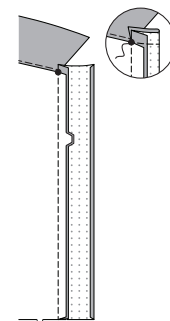


Placket

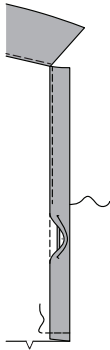
7. Press under 5/8"(1.5cm) on unnotched edge of PLACKET (4). Trim to 1/4"(6mm).



8. With RIGHT sides together, pin placket to front edges matching notches and large dots. Stitch, keeping collar free. Press seam toward placket, pressing placket out. Turn upper edge of placket to OUTSIDE, along foldline. Stitch upper edge, ending at large dot, keeping collar free. Trim.

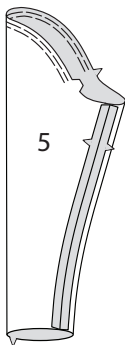


9. Turn placket to **INSIDE**, along foldline, pinning pressed edge of placket over seam, placing pins on **OUTSIDE**. On **OUTSIDE**, stitch in the ditch or groove of seam, catching in pressed edge of placket on **INSIDE**. Baste raw edges together.

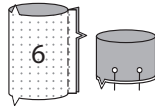


Sleeve

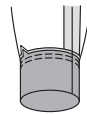
10. EASESTITCH upper edge of **SLEEVE (5)** between notches. Stitch underarm seam.



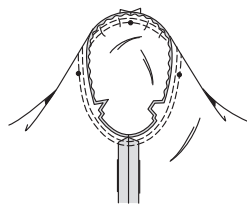
11. With **RIGHT** sides together, stitch ends of **SLEEVE BAND (6)** together. Fold band in half lengthwise along foldline, having raw edges even. Press. Pin.



12. On **OUTSIDE**, pin band to lower edge of sleeve, matching seams and having raw edges even. Stitch, stretching band to fit. Stitch again 1/4”(6mm) from first stitching within the seam allowance. Trim close to second stitching. Press seam toward sleeve, pressing band out.

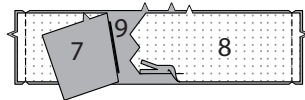


13. With **RIGHT** sides together, pin sleeve to armhole edge with center small dot at shoulder seam, matching underarm seams, notches and remaining small dots. Pull up ease stitches. Adjust to fit. Baste. Stitch. Stitch again 1/8”(3mm) from first stitching. Trim seam below notches close to stitching. Press only the seam allowance, shrinking out fullness.

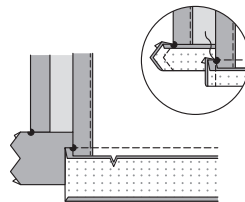


Lower Band

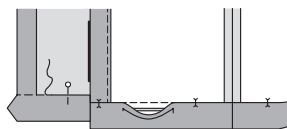
14. With **RIGHT** sides together, stitch **RIGHT FRONT BAND (7)** and **LEFT FRONT BAND (8)** to **BACK BAND (9)** at side seams. Press under 5/8”(1.5cm) on unnotched edge of band. Trim to 1/4”(6mm).



15. With **RIGHT** sides together, pin band to lower edge of top matching notches and large dots. Stitch between large dots. Press seam toward band, pressing band out. Turn ends of band to **OUTSIDE**, along foldline. Press. Stitch ends. Trim.

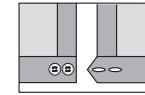


16. Turn band to **INSIDE** along fold line, pinning pressed edge over seam, placing pins on **OUTSIDE**. On **OUTSIDE**, stitch in the ditch or groove of seam, catching in pressed edge of band on **INSIDE**.



Finishing

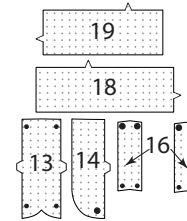
17. Make buttonholes in **LEFT** front placket at markings. Sew buttons to **RIGHT** front at markings.



PANTS B

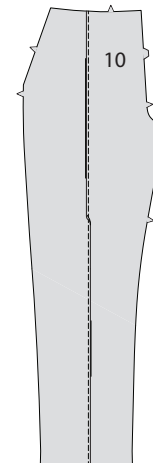
Interfacing

1. Pin **INTERFACING** to wrong side of each matching fabric section. Fuse, following manufacturer's instructions.

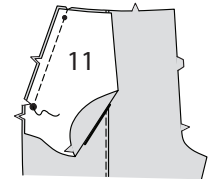


Front and Pockets

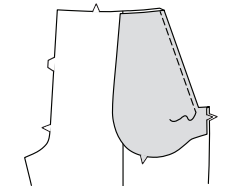
2. To make tucks in **FRONT (10)**, press front along tuck line, stitch a scant 1/8”(3mm) from pressed edge. Press tucks away from center.



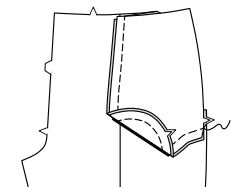
3. With **RIGHT** sides together and raw edges even, pin **POCKET FACING (11)** to front, matching small and large dots. Stitch ending at large dot. Trim seam. Clip to stitching at large dot.



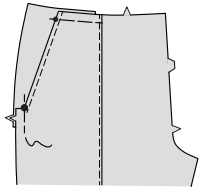
4. Turn facing to **INSIDE**; press. On **OUTSIDE**, **TOPSTITCH** close to finished edge.



5. On **INSIDE**, with **RIGHT** sides together, pin **POCKET (12)** to pocket facing, having raw edges even. Stitch notched edge, as shown.



6. On **OUTSIDE**, lap garment front over pocket and facing section, matching small dots, having raw edges even; pin. Baste side and upper edges together.

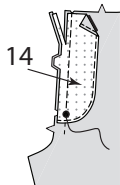


Front Fly

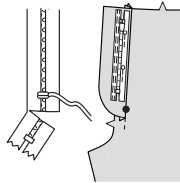
7. REINFORCE front sections at large dot. Clip to large dots.



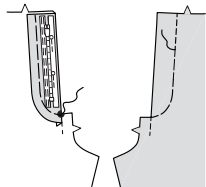
8. FINISH curved edge of **FLY FACING** (14). With right sides together, pin fly to **LEFT** front, matching large dot. Stitch above large dot. Trim seam above clip to 1/4"(6mm).



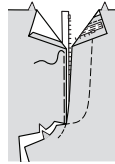
9. NOTE: It may be necessary to shorten zipper. To make new zipper stop, place zipper along opening edge (with pull tab 1/4"(6mm) below seamline). Mark placement of new zipper stop. Whipstitch across teeth at marking. Cut zipper 3/4"(20mm) below the new stop. Open out fly; press seam toward fly. Place closed zipper, face down over fly facing, placing lower end of zipper 1/4"(6mm) above large dot, and zipper tape along fly seam, as shown. Stitch close to zipper on left edge of zipper tape, and 1/4"(6mm) away, using a zipper foot.



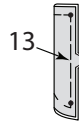
10. Press fly to inside. Baste fly in place along stitching line. On outside, **TOPSTITCH** as basted.



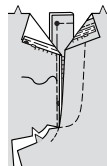
11. Press under 3/8"(1cm) on **RIGHT** front, above reinforced clip. Open zipper. Pin right front over zipper tape, close to teeth. Baste. **NOTE:** Left front will lap 1/4"(6mm) over right and large dots will match.



12. Fold **RIGHT FLY** (13) in half, lengthwise, with **WRONG** sides together, having raw edges even. Machine-baste raw edges. Press. **FINISH** notched edge, if you prefer.

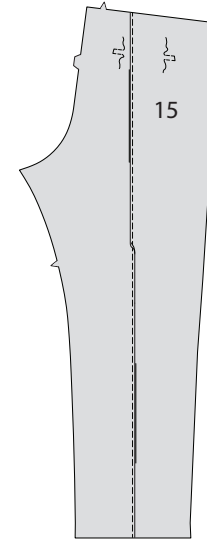


13. Baste right front edge 5/8"(1.5cm) over notched edge of fly, having upper edges even, matching small dots. **TOPSTITCH** through all thicknesses, using a zipper foot.

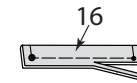


Back and Welt Pocket

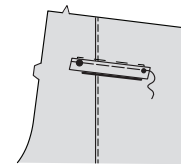
14. Make tucks in **BACK** (15) in same manner as front. **REINFORCE** back along corners of stitching lines, pivoting at small dots, as shown.



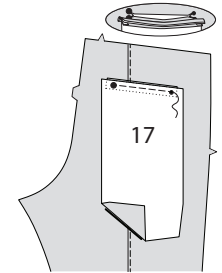
15. With wrong sides together, fold **WELT** (16) sections along foldline. Baste raw edges together. Trim seam allowances on long edges to a scant 1/4"(6mm).



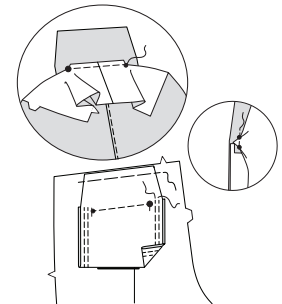
16. Pin welt to back, placing seamline along lower stitching line. Baste.



17. With right sides together, pin straight end of **BACK POCKET** (17) to back along lower stitching line, matching symbols. Stitch along stitching line between small and large dots. Slash along solid line, clipping diagonally to dots, being careful not to cut welt.

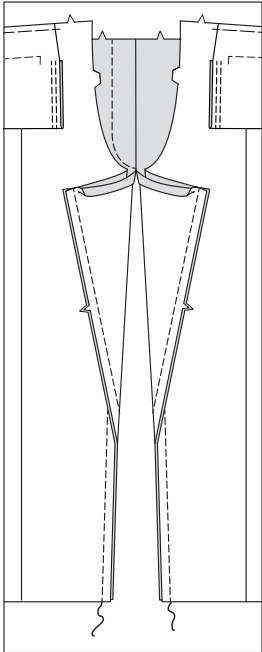


18. Turn pocket and triangular ends to inside. Press. With right sides together, fold back pocket along foldline, having raw edges even at sides, matching stitching lines and symbols. Stitch along stitching line between small and large dots, keeping back free. Sew clipped corners and ends of welt together, as shown. Stitch pocket edges together, keeping back free. Stitch again 1/4"(6mm) away in seam allowance, as shown. Pin back pocket to back at upper edge; baste raw edges together.

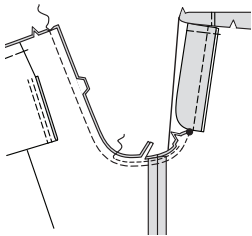


Side and Inner Leg Seams

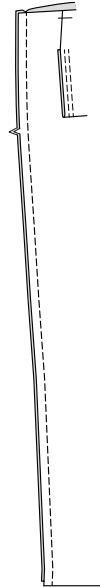
19. Stitch front and back together at inner leg seams, stretching back to fit front between upper edge and notch.



20. Stitch remainder of crotch seam to large dot in front. Stitch again 1/4"(1cm) away within seam allowance along curve, as shown. Trim close to second stitching.

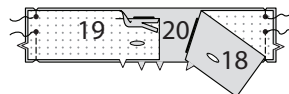


21. Stitch front to back at side seams.

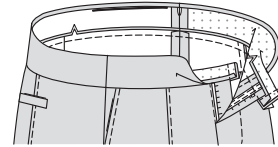


Waistband

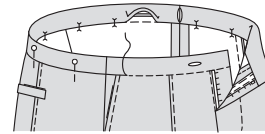
22. With RIGHT sides together, stitch RIGHT FRONT WAISTBAND (18) and LEFT FRONT WAISTBAND (19) to each side of BACK CASING (20), matching notches, leaving an opening between small dots. Press under 5/8"(1.5cm) on long unnotched edge of waistband; trim to 1/4"(6mm). Make buttonholes in front waistband at markings.



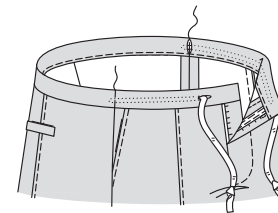
23. With RIGHT sides together, pin band to upper edge of pants, matching centers and seams, matching side seams. Baste. Stitch. Trim seam; press toward band. Fold ends of band to OUTSIDE, along fold line. Stitch ends. Trim seams and corners.



24. Turn band to INSIDE; press. Pin pressed edge of waistband over seam, placing pins on OUTSIDE. On OUTSIDE, stitch band close to seam, catching in pressed edge on INSIDE.

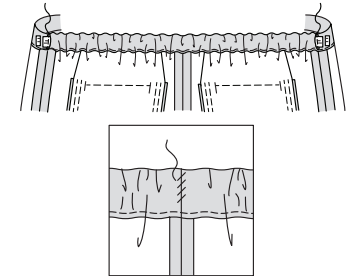


25. Cut two pieces of cord each the length of front waistband plus 10"(26cm). Attach a safety pin to one end of cording. Insert through opening in casing. Pull free end of cord through front buttonhole, having end of cord extending 1/2"(1.3cm) beyond side seam. Baste in ditch or groove of side seams, being careful not to catch opening edge of casing in basting. Tie loose end of cord in a knot.



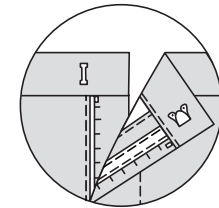
26. Cut a piece of elastic the length of GUIDE FOR ELASTIC (21). Attach a safety pin to one end of elastic. Insert elastic through opening in back casing, having ends of elastic extend 5/8"(1.5cm) beyond seam allowance, as shown. Stitch across ends of elastic, in the ditch or groove of each side seam, catching in cording drawstring. To reduce bulk in seam allowance, pull out end of elastic and trim close to stitching.

SLIPSTITCH side seams closed.

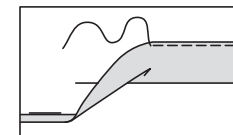


Finishing

27. Lap ends of band; fasten with hook closure.



28. Press up hem on lower edge of pants. Press under 1/4"(6mm) on raw edge. Stitch close to inner pressed edge.





Congrats!


You've completed your sewing adventure!

**SHARE
YOUR** look!



Post your pattern and tag us at
@knowmepatterns and use #knowmepatterns
for a chance to be featured on our social media!

Look for more Know Me PDF patterns at [SomethingDelightful.com/know-me/](https://www.somethingdelightful.com/know-me/)

 1-800-255-2762

© 2022 KnowMe® an IG Design Group Americas, Inc. brand. | All Rights Reserved.
Sold for individual home use only and not for commercial or manufacturing purposes.