

@brittanyjjones



>> MISSES' AND WOMEN'S KNIT
TOPS AND JEANS
SKILL LEVEL: AVERAGE



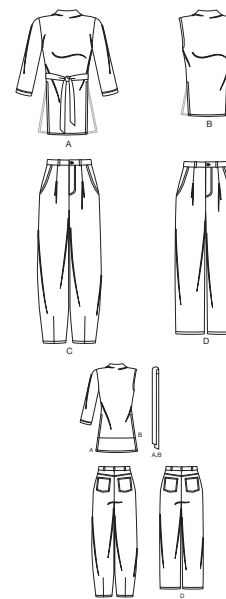
PDF PATTERNS

THINGS YOU NEED:

> **B:** One pkg. of ½" (1.3cm) wide single fold bias tape. **C,D:** 7" (18cm) zipper, one ⅝" (1.5cm) button.

SUGGESTED FABRICS:

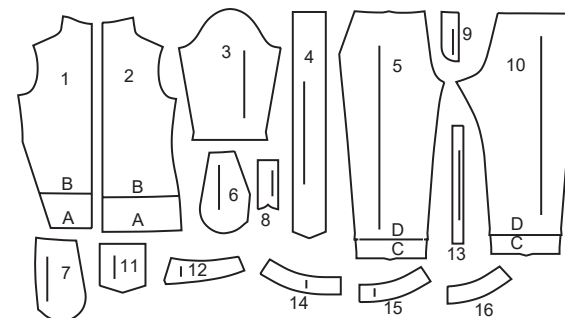
> **A,B:** Stretch Knits only such as Interlock, Jersey, Rib Knit, ITY, Sweater Knit. See Stretch Gauge. **C,D:** Cotton Blends, Denim, Linen Blends, Pinwale Cord, Stretch Wovens. **Lining C,D:** Cotton Blends, Polyester Lining Fabric. **Interfacing:** Lightweight Fusible.



Your printed tile pieces should be assembled before you move on to this step!

PIECES (16)

- 1 FRONT - A,B
- 2 BACK - A,B
- 3 SLEEVE - A
- 4 BELT - A,B
- 5 FRONT - C,D
- 6 POCKET - C,D
- 7 SIDE FRONT - C,D
- 8 RIGHT FLY - C,D
- 9 FLY FACING - C,D
- 10 BACK - C,D
- 11 BACK POCKET - C,D
- 12 YOKE BACK - C,D
- 13 CARRIERS - C,D
- 14 RIGHT FRONT WAISTBAND - C,D
- 15 LEFT FRONT WAISTBAND - C,D
- 16 BACK WAISTBAND - C,D



STRETCH GAUGE - MEASURING FABRIC STRETCH

Whenever you see a minimum stretch requirement on one of the sewing patterns, it is important that you measure the fabric stretch in both length and width!



YARDAGE CHARTS

MISSSES'						WOMEN'S										
SIZES	10	12	14	16	18	20W	22W	24W	26W	28W	30W	32W	34W	36W	38W	
TOP A																
60"*	1 $\frac{3}{8}$	1 $\frac{3}{8}$	1 $\frac{1}{2}$	1 $\frac{1}{2}$	1 $\frac{5}{8}$	2 $\frac{1}{8}$	2 $\frac{1}{8}$	2 $\frac{1}{8}$	2 $\frac{1}{8}$	2 $\frac{1}{4}$	2 $\frac{1}{4}$	2 $\frac{1}{4}$	2 $\frac{1}{2}$	2 $\frac{1}{2}$	2 $\frac{5}{8}$	yds.
150cm*	1.3	1.3	1.4	1.4	1.4	1.9	2.0	2.0	2.0	2.1	2.1	2.1	2.3	2.3	2.4	m.
TOP B																
60"*	1	1	1	1	1	1 $\frac{1}{8}$	1 $\frac{1}{8}$	1 $\frac{3}{4}$	1 $\frac{3}{4}$	1 $\frac{3}{4}$	1 $\frac{3}{4}$	1 $\frac{3}{4}$	1 $\frac{7}{8}$	1 $\frac{7}{8}$	1 $\frac{7}{8}$	yds.
150cm*	1.0	1.0	1.0	1.0	1.0	1.1	1.1	1.6	1.6	1.6	1.6	1.6	1.6	1.8	1.8	m.
JEANS C																
45"*	2 $\frac{3}{8}$	2 $\frac{3}{8}$	2 $\frac{3}{8}$	2 $\frac{3}{8}$	2 $\frac{1}{2}$	2 $\frac{5}{8}$	2 $\frac{5}{8}$	2 $\frac{5}{8}$	2 $\frac{5}{8}$	3	3	3	3 $\frac{1}{8}$	3 $\frac{1}{8}$	3 $\frac{1}{4}$	yds.
60"*	1 $\frac{5}{8}$	1 $\frac{5}{8}$	1 $\frac{3}{4}$	2	2	2 $\frac{1}{8}$	2 $\frac{1}{4}$	2 $\frac{1}{4}$	2 $\frac{1}{4}$	2 $\frac{1}{2}$	2 $\frac{1}{2}$	2 $\frac{1}{2}$	2 $\frac{1}{2}$	2 $\frac{1}{2}$	2 $\frac{5}{8}$	"
115cm*	2.2	2.2	2.2	2.2	2.2	2.4	2.4	2.4	2.4	2.8	2.8	2.8	2.9	2.9	3.0	m.
150cm*	1.5	1.5	1.6	1.9	1.9	1.9	2.0	2.1	2.1	2.3	2.3	2.3	2.3	2.3	2.3	"
LINING C,D																
45"***	$\frac{1}{2}$	$\frac{1}{2}$	$\frac{1}{2}$	$\frac{1}{2}$	$\frac{1}{2}$	$\frac{1}{2}$	$\frac{1}{2}$	$\frac{1}{2}$	$\frac{1}{2}$	$\frac{1}{2}$	$\frac{1}{2}$	$\frac{1}{2}$	$\frac{1}{2}$	$\frac{1}{2}$	$\frac{1}{2}$	yds.
115cm**	0.5	0.5	0.5	0.5	0.5	0.5	0.5	0.5	0.5	0.5	0.5	0.5	0.5	0.5	0.5	m.
INTERFACING C,D																
20"	$\frac{1}{2}$	$\frac{1}{2}$	$\frac{1}{2}$	$\frac{5}{8}$	$\frac{5}{8}$	$\frac{3}{4}$	$\frac{3}{4}$	$\frac{3}{4}$	$\frac{3}{4}$	$\frac{3}{4}$	$\frac{7}{8}$	$\frac{7}{8}$	$\frac{7}{8}$	$\frac{7}{8}$	$\frac{7}{8}$	yds.
51cm	0.5	0.5	0.5	0.6	0.6	0.6	0.7	0.7	0.7	0.7	0.7	0.8	0.8	0.8	0.8	m.
JEANS D																
45"*	2 $\frac{1}{4}$	2 $\frac{1}{4}$	2 $\frac{1}{4}$	2 $\frac{1}{4}$	2 $\frac{1}{4}$	2 $\frac{1}{2}$	2 $\frac{1}{2}$	2 $\frac{1}{2}$	2 $\frac{5}{8}$	2 $\frac{7}{8}$	2 $\frac{7}{8}$	2 $\frac{7}{8}$	2 $\frac{7}{8}$	3	3 $\frac{1}{8}$	yds.
60"*	1 $\frac{5}{8}$	1 $\frac{5}{8}$	1 $\frac{5}{8}$	1 $\frac{7}{8}$	1 $\frac{7}{8}$	1 $\frac{7}{8}$	1 $\frac{7}{8}$	2	2	2 $\frac{3}{8}$	2 $\frac{3}{8}$	2 $\frac{3}{8}$	2 $\frac{3}{8}$	2 $\frac{3}{8}$	2 $\frac{3}{8}$	"
115cm*	2.1	2.1	2.1	2.1	2.1	2.3	2.3	2.3	2.4	2.6	2.6	2.7	2.7	2.8	2.9	m.
150cm*	1.4	1.4	1.5	1.6	1.6	1.8	1.9	1.9	2.0	2.2	2.2	2.2	2.2	2.2	2.2	"

FINISHED GARMENT MEASUREMENTS

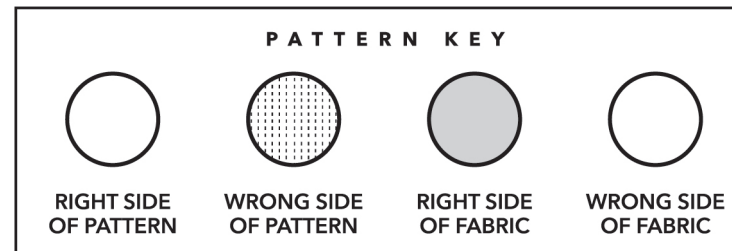
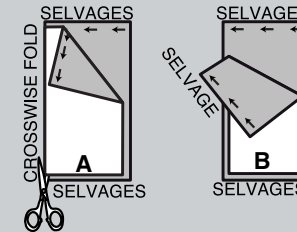
[illegible]

BODY MEASUREMENTS

MISSSES'						WOMEN'S										
SIZES	10	12	14	16	18	20W	22W	24W	26W	28W	30W	32W	34W	36W	38W	
BUST	32½	34	36	38	40	42	44	46	48	50	52	54	56	58	60	ins.
	83	87	92	97	102	107	112	117	122	127	132	137	142	147	152	cm.
WAIST	25	26½	28	30	32	35	37	39	41½	44	46½	49	51½	54	56½	ins.
	64	67	71	76	81	89	94	99	105	112	118	124	131	138	144	cm.
HIP	34½	36	38	40	42	44	46	48	50	52	54	56	58	60	62	ins.
	88	92	97	102	107	112	117	122	127	132	137	142	147	152	157	cm.
BACK-NECK TO WAIST LENGTH	16	16¼	16½	16¾	17	17¼	17¾	17½	17⅝	17¾	17⅞	18	18⅛	18½	18¾	ins.
	40.5	41.5	42	42.5	43	44	44	44.5	45	45	45.5	46	46	47	47.5	cm.

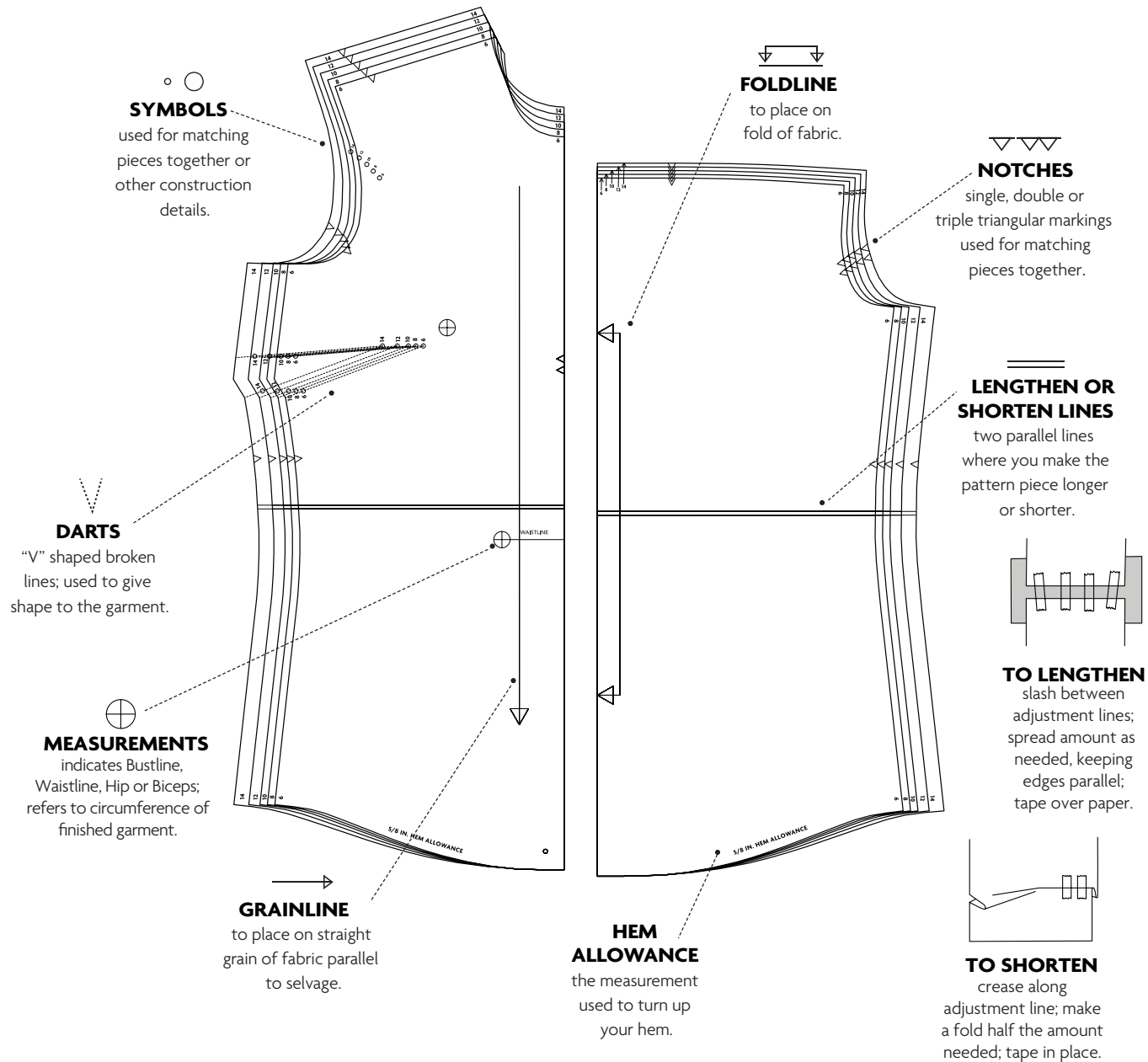
CUTTING AND MARKING

- > **SHRINK FABRIC** if not labeled pre-shrunk. Press.
- > **CIRCLE LAYOUT** for View, Size, Fabric Width.
- > Use **WITH NAP** layout for fabrics with one-way designs, nap, pile or surface shading. Because most knits have surface shading, a with nap layout is used.
- > For **DOUBLE THICKNESS (WITH FOLD)**, fold fabric with right sides together.
- > ***DOUBLE THICKNESS (WITHOUT FOLD)**, for fabrics with nap, fold fabric crosswise, right sides together. Mark as shown. Cut along crosswise fold of fabric (A). Turn upper layer 180° so arrows go in same direction and place over lower layer, right sides together (B).
- > For **SINGLE THICKNESS**, place fabric right side up. (For Fur Pile fabrics, place pile side down.)



- > Before **CUTTING**, place all pieces on fabric according to layout. Pin.
(Layouts show approximate position of pattern pieces; position may vary according to your pattern size.)
- > ★ Cut other pieces first, allowing enough fabric to cut this piece. Open fabric. Cut piece on single layer of fabric with piece face up on right side of fabric.
- > Cut accurately, cutting notches outward.
- > Before removing pattern, **TRANSFER MARKINGS** and lines of construction to **WRONG SIDE** of fabric, using Pin and Chalk Pencil method or Tracing Paper and Dressmaker Wheel. Markings needed on right side of fabric should be thread traced.
- NOTE:** Broken-line boxes (a! b! c!) in layouts represent pieces cut by measurements provided.
- > Prewash your fabric using a method that's suitable for the fabric type.
- > Fold fabric with right sides together, matching **SELVAGES**.
- > Pin your pattern pieces to the fabric as shown below and cut them out using a sharp pair of dressmaker's shears.

PATTERN MARKINGS

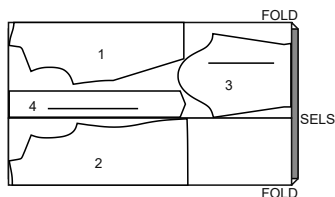


CUTTING LAYOUTS

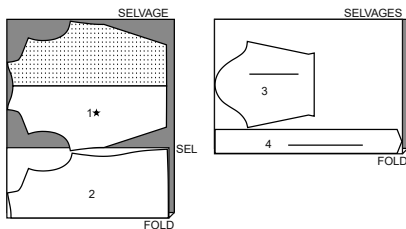
TOP AND BELT A

use pieces: 1,2,3,4

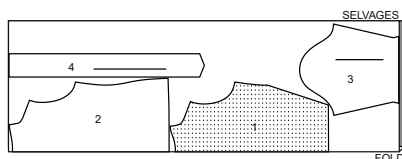
60" (150 cm)
with nap
sizes 10-12-14-16-18



60" (150 cm)
with nap
sizes 20W-22W-24W-26W-28W-30W-32W



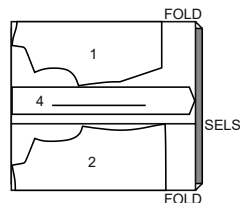
60" (150 cm)
with nap
sizes 34W-36W-38W



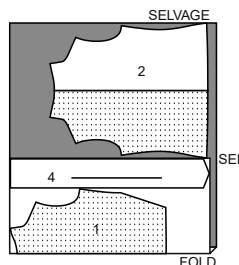
TOP AND BELT B

use pieces: 1,2,4

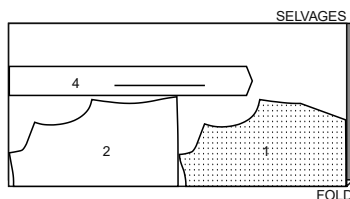
60" (150 cm)
with nap
sizes 10-12-14-16-18



60" (150 cm)
with nap
sizes 20W-22W



60" (150 cm)
with nap
sizes 24W-26W-28W-30W-32W-34W-36W-38W

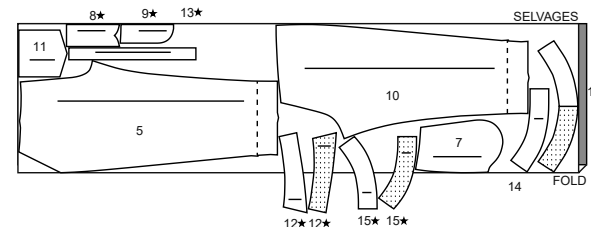


NOTE: DASHED LINE SHOWN ON PATTERN PIECES IN CUTTING LAYOUTS INDICATES CUTTING LINE FOR SHORTER LENGTH

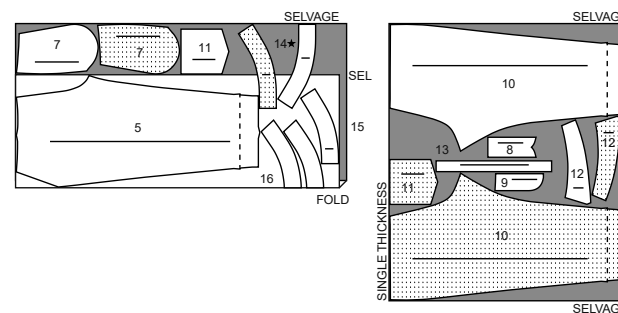
JEANS C,D

use pieces: 5,7,8,9,10,11,12,13,14,15,16

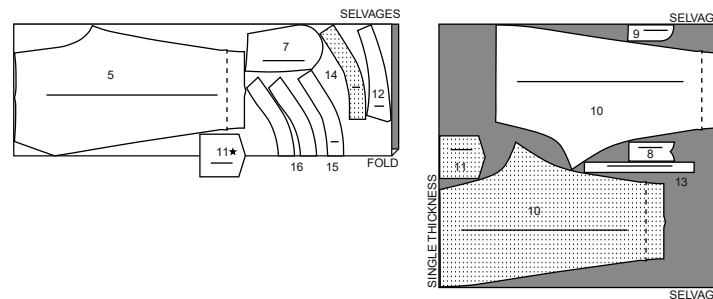
45" (115 cm)
with nap
sizes 10-12-14-16-18



45" (115 cm)
with nap
sizes 20W-22W-24W-26W

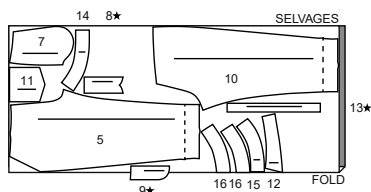


45" (115 cm)
with nap
sizes 28W-30W-32W-34W-36W-38W

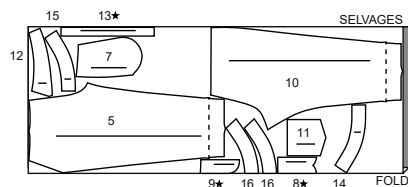


CUTTING LAYOUTS CONTINUED

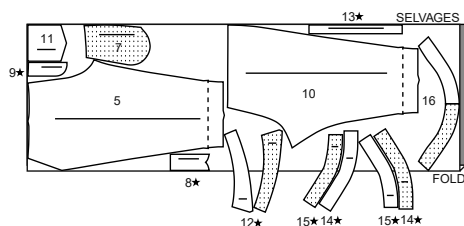
60" (150 cm)
with nap
sizes 10-12-14-16-18



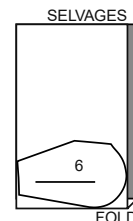
60" (150 cm)
with nap
sizes 20W-22W-24W-26W



60" (150 cm)
with nap
sizes 28W-30W-32W-34W-36W-38W



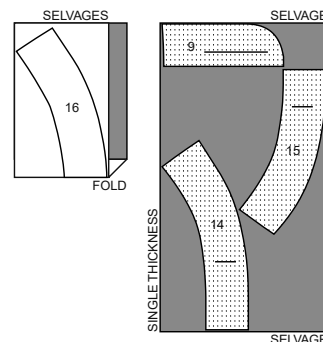
45" (115 cm)
without nap
sizes 20W-22W-24W-26W-28W-30W-32W-34W-
36W-38W



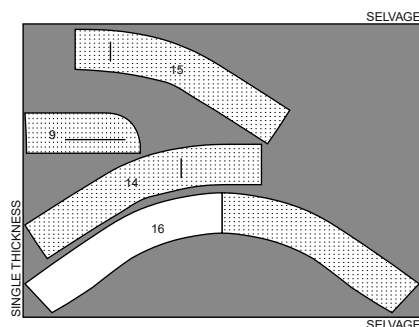
FUSIBLE INTERFACING C,D

use pieces: 9,14,15,16

20" (51 cm)
sizes 10-12-14-16-18



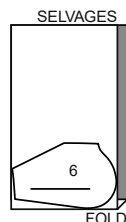
20" (51 cm)
sizes 20W-22W-24W-26W-28W-30W-32W-34W-
36W-38W



LINING C,D (POCKETS)

use piece: 6

45" (115 cm)
without nap
sizes 10-12-14-16-18



PATTERN PIECES WILL BE IDENTIFIED
BY NUMBERS THE FIRST TIME THEY ARE
USED.

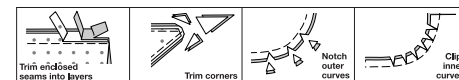
SEWING INFORMATION

$\frac{5}{8}$ " (1.5cm) SEAM ALLOWANCES ARE
INCLUDED,
(unless otherwise indicated)
ILLUSTRATION SHADING KEY

Right Side	Wrong Side	Interfacing	Lining	Underlining

Pin or baste seams, right side together, matching notches. Fit garment before stitching major seams.

Press seam allowances flat; then open unless otherwise stated. Clip where necessary so they lie flat.



GLOSSARY

Sewing terms appearing in **BOLD TYPE** in Sewing Instructions are explained below.

EASESTITCH - Stitch along seamline, using long machine stitches. Pull thread ends when adjusting to fit.

NOTE: For sleeve caps, make a second row of long machine stitches $\frac{1}{4}$ "(6mm) away in seam allowance. for more control.

EDGESTITCH - Stitch close to finished edge or seam.

FINISH - Stitch $\frac{1}{4}$ "(6mm) from raw edge and finish with one of the following: (1) Pink OR (2) Overcast OR (3) Turn in along stitching and stitch close to fold OR (4) Overlock.

OPTIONAL FOR HEMS: Apply Seam Binding.

NARROW HEM - Turn in hem; press, easing in fullness if necessary. Open out hem. Turn in again so raw edge is along crease; press. Turn in along crease; stitch.

SLIPSTITCH - Slide needle through a folded edge, then pick up a thread of underneath fabric.

STAYSTITCH - Stitch 1/8"(3mm) from seamline in seam allowance (usually 1/2"(13mm) from raw edge).

TOPSTITCH - On outside, stitch 1/4"(6mm) from edge, seam or previous stitching, using presser foot as guide, or stitch where indicated in instructions.

UNDERSTITCH - Open out facing or underside of garment; stitch to seam allowance close to seam.



@brittanyjjones

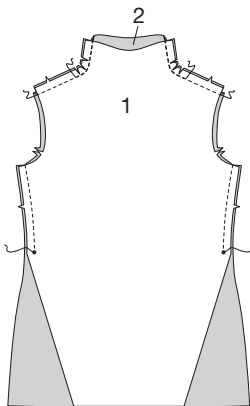
SEWING DIRECTIONS

TOP AND BELT A, B

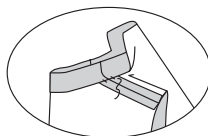
NOTE: View A will be shown in following illustrations, unless otherwise indicated.

Front and Back

- 1.** Stitch **FRONT** (1) and **BACK** (2) together at shoulders. To reinforce stitching at neckline, stitch again along curved part of seamline to upper edge. Clip curves. Stitch side edges together above large dot.



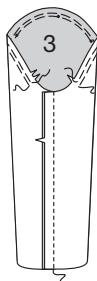
- 2.** With wrong sides together, fold upper edge of top to inside along foldline. Press. Tack at shoulder seams.



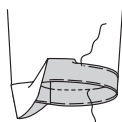
Armhole Finish

VIEW A

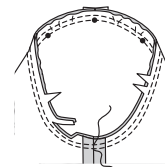
- 3.** **EASESTITCH** SLEEVE (3) between notches. Stitch sleeve seam.



- 4.** Turn up 1-1/4"(3.2cm) hem. Baste close to fold. Turn in 1/4"(6mm) on raw edge. Baste hem in place close to upper edge. Press. **TOPSTITCH** hem along upper basting.

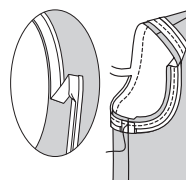


- 5.** With right sides together, pin sleeve into armhole, placing center small dot at shoulder seam. Adjust ease; baste. Stitch. Stitch again 1/4"(6mm) away in seam allowance. Trim close to stitching. Press seam allowances flat. Turn seam toward sleeve.

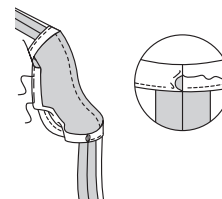


VIEW B

- 6.** Open out one folded edge of bias tape; press out crease and pre-shape tape to match curve of armhole by pressing lightly. Pin bias tape to armhole edge, placing crease along seamline, turning in ends at side seam, as shown. Stitch along crease. Trim top seam allowances even with bias tape.

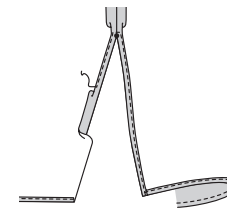


- 7.** Turn bias tape to inside along seam. Press. Baste in place. **SLIPSTITCH** ends. On outside, stitch close to basted edge.

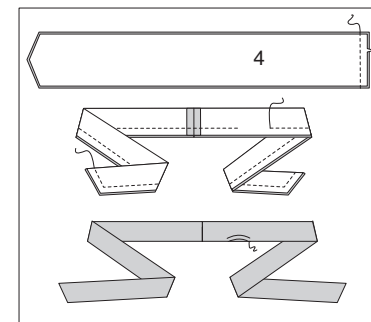


Finishing

- 8.** Make a 5/8"(1.5cm) **NARROW HEM** at lower edge. Make a **NARROW HEM** at side opening edges, tapering to nothing above large dot. Pivot across seam allowance 1/4"(6mm) above large dot, when stitching.



- 9.** Stitch **BELT** (4) sections together along notched edge. With right sides together, fold belt along foldline. Stitch, leaving an opening. Trim. Turn. Press. **SLIPSTITCH** opening.

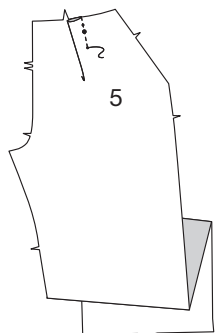


JEANS C, D

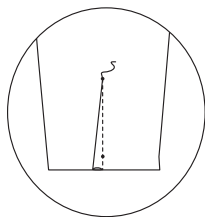
NOTE: View C will be shown in following illustrations, unless otherwise indicated.

Front

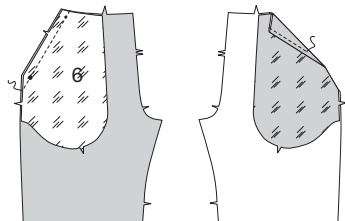
1. To make pleat in FRONT (5), on inside, bring stitching lines together, matching small dots. Stitch from upper edge to lower small dot. Turn toward center, press.



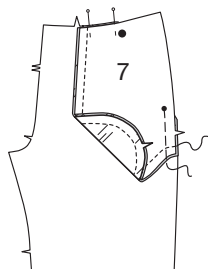
2. View C: Stitch dart in front at lower edge of leg. Press to one side.



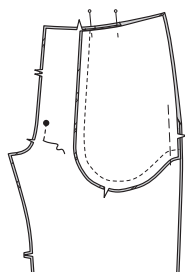
3. Stitch POCKET (6) to upper side edge of front, matching symbols. Trim. Turn pocket to inside. Press. **TOPSTITCH**, as shown.



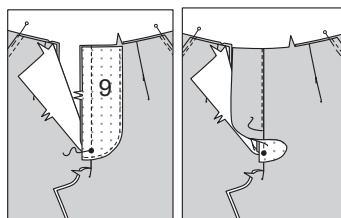
4. Stitch SIDE FRONT (7) to pocket along outer edge, keeping front free. Pin front in place, matching large and small dots. Baste across side edges.



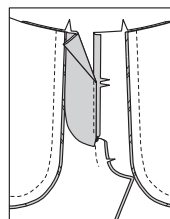
5. Stitch front sections together between large dot and notch.



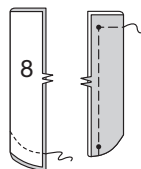
6. Fuse INTERFACING to wrong side of FLY FACING (9), following manufacturer's instructions. **FINISH** long curved edge of fly facing. Pin facing to left front, right sides together, matching large dots. Stitch from upper edge to large dot. Trim. Press seam towards facing. **UNDERSTITCH** facing.



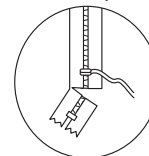
7. Turn facing to inside. Press. On right front, press under along foldline above small dot.



8. With right sides together, fold RIGHT FLY (8) along foldline. Stitch lower edge. Trim. Turn. Press. Baste raw edges.



NOTE: It may be necessary to shorten zipper. To make new zipper stop, place zipper along opening edge (with pull tab 1/8"(3mm) below seamline). Mark placement of new zipper stop. Whipstitch across teeth at marking. Cut zipper 3/4"(2cm) below the new stop.



9. A-Place closed zipper (face up) under right front opening edge, placing bottom zipper stop at large dot and front edge of pants along zipper teeth. Baste.

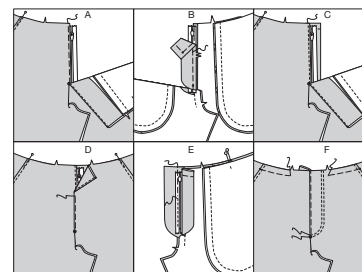
B-On inside, pin right fly to right front opening edge (over zipper), matching notches and small dots, having raw edges even. Baste using 3/8"(1cm) seam.

C-On outside, using a zipper foot, stitch along 3/8"(1cm) seamline through all layers.

D-Lap left front opening edge over right, matching centers. Baste close to edge.

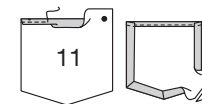
E-Turn left front out of the way and baste zipper to left fly facing ONLY. Using a zipper foot, stitch zipper to facing, keeping right front and fly free.

F-Turn left facing down. On outside, stitch left front along stitching lines, keeping right fly free. Baste upper edge of pockets to front.

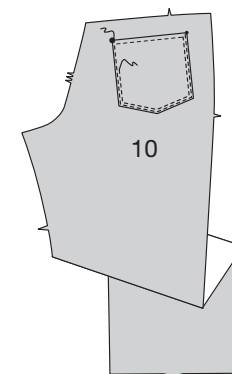


Back

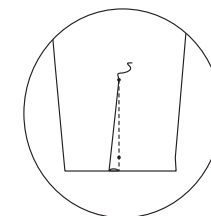
10. Make a 5/8"(1.5cm) **NARROW HEM** on upper edge of BACK POCKET (11). Turn in seam allowances on sides and lower edge, folding in corners diagonally. Press.



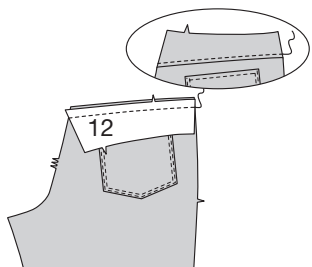
11. Pin pocket to BACK (10), matching large and small dots. **EDGE STITCH** and **TOPSTITCH** sides and lower edges.



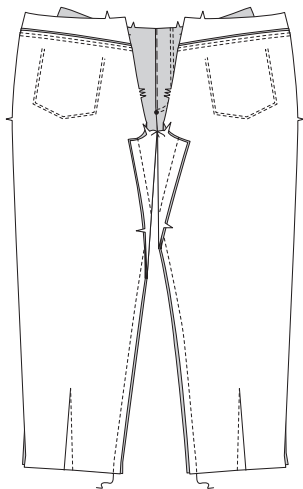
12. View C: Stitch dart in back at lower edge of leg. Press to one side.



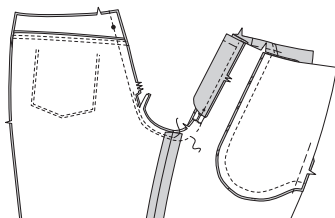
- 13.** Stitch YOKE BACK (12) to upper edge of back. Press seam toward yoke back. **TOPSTITCH** yoke back.



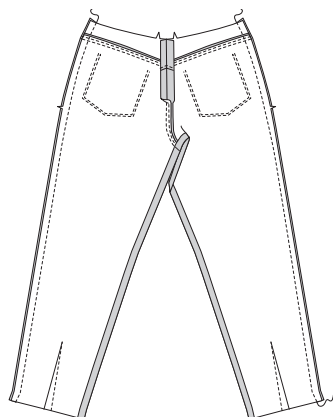
- 14.** Stitch back to front at inner leg edges, stretching back to fit.



- 15.** Stitch remainder of crotch seam to notch on front. Stitch again close to first stitching, between notches. Trim close to second stitching.

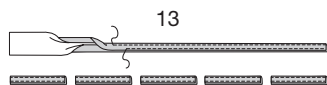


- 16.** Stitch back to front at sides.

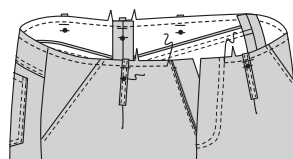


Waistband

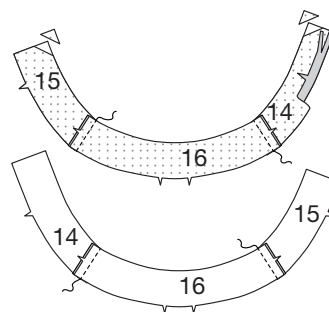
- 17.** Turn in $\frac{3}{8}$ " (1cm) along long edges of CARRIERS (13), press. Fold carriers in half lengthwise. **EDGESTITCH** long edges. Cut carriers into five sections, each $3\frac{1}{2}$ " (9cm) long.



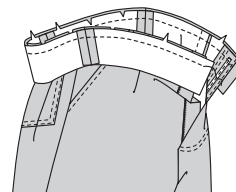
- 18.** Pin one end of each carrier to upper edge of pants, centering over large dot, having raw edges even. Baste. Stitch across carrier at large dot. **STAYSTITCH** upper edge of pants between fly and zipper stitching.



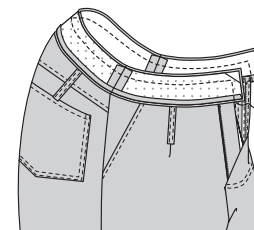
- 19.** Trim corners from front waistband INTERFACING sections, as shown. Fuse INTERFACING to wrong side of one RIGHT FRONT WAISTBAND (14), one LEFT FRONT WAISTBAND (15), and one BACK WAISTBAND (16) section, following manufacturer's instructions. For FACING, stitch interfaced front waistbands and interfaced back waistband together at sides. Turn in $\frac{5}{8}$ " (1.5cm) along lower edge of waistband facing, easing in fullness, press. Trim pressed edge to $\frac{3}{8}$ " (1cm). Stitch remaining waistband sections together at sides.



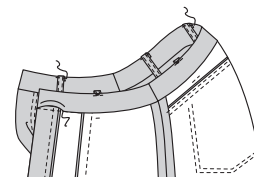
- 20.** With right sides together, pin waistband to pants, matching notches, centers, and side seams, clipping pants as necessary. Stitch. Trim. Press seam toward waistband.



- 21.** Pin waistband facing to waistband, matching seams. Stitch upper and front opening edges. Trim.

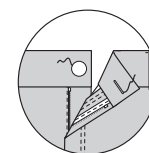


- 22.** Turn. Press. **SLIPSTITCH** pressed edge of facing over seam. Press under $\frac{5}{8}$ " (1.5cm) on free end of carriers and pin to upper edge of waistband, centering over large dots. **EDGESTITCH** in place.

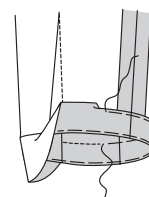


Finishing

- 23.** Make a buttonhole in left waistband at marking. Sew button to right waistband at marking.



- 24.** Turn up $1\frac{1}{2}$ " (2.5cm) hem. Baste close to fold. Turn in $\frac{1}{4}$ " (6mm) on raw edge. Baste hem in place close to upper edge. Press. **TOPSTITCH** hem along upper basting.





Congrats!


You've completed your sewing adventure!

SHARE YOUR look!



Post your pattern and tag us at
@knowmepatterns and use #knowmepatterns
for a chance to be featured on our social media!

Look for more Know Me PDF patterns at **[SomethingDelightful.com/know-me/](https://www.somethingdelightful.com/know-me/)**

 1-800-255-2762

© 2022 KnowMe® an IG Design Group Americas, Inc. brand. | All Rights Reserved.
Sold for individual home use only and not for commercial or manufacturing purposes.