



@beautejadore



>> MISSES' AND WOMEN'S COAT
 AND TROUSERS
 SKILL LEVEL: AVERAGE



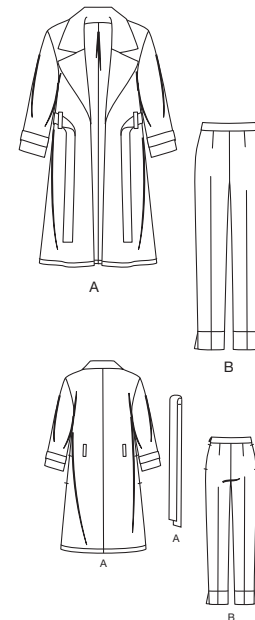
PDF PATTERNS

THINGS YOU NEED:

> 7" (18cm) invisible zipper.

SUGGESTED FABRICS:

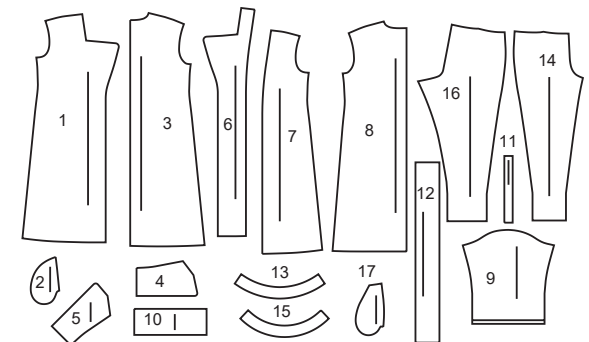
> **A:** Tweed, Wool Blends, Gabardine, Cotton Blends. **B:** Cotton Blends, Dupioni, Linen Blends, Sateen, Stretch Wovens, Lightweight Wool Blends.
Lining: Polyester, Lining Fabric. **Interfacing:** Lightweight Fusible.



Your printed tile pieces should be assembled before you move on to this step!

PIECES (17)

- 1 Front-A
- 2 Pocket-A
- 3 Back-A
- 4 Upper Collar-A
- 5 Under Collar-A
- 6 Front Facing-A
- 7 Front Lining-A
- 8 Back Lining-A
- 9 Sleeve-A
- 10 Tab-A
- 11 Carriers-A
- 12 Belt-A
- 13 Front Waistband-B
- 14 Front-B
- 15 Back Waistband-B
- 16 Back-B
- 17 Pocket-B



YARDAGE CHARTS

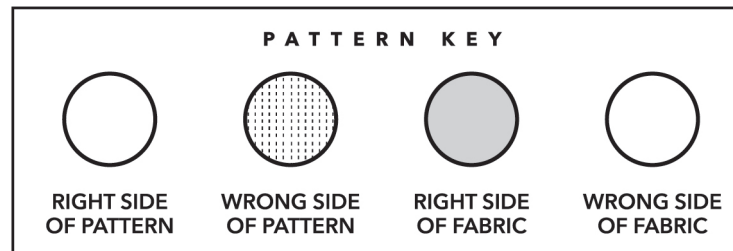
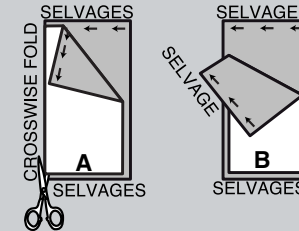
MISSES'						WOMEN'S										
SIZES	10	12	14	16	18	20W	22W	24W	26W	28W	30W	32W	34W	36W	38W	
COAT A																
45"*	5 $\frac{1}{8}$	5 $\frac{1}{8}$	5 $\frac{1}{4}$	5 $\frac{1}{4}$	5 $\frac{1}{4}$	6 $\frac{1}{4}$	6 $\frac{1}{4}$	6 $\frac{1}{4}$	6 $\frac{3}{8}$	6 $\frac{3}{8}$	6 $\frac{3}{8}$	6 $\frac{1}{2}$	6 $\frac{1}{2}$	6 $\frac{1}{2}$	6 $\frac{1}{2}$	yds.
60"*	3 $\frac{3}{4}$	3 $\frac{3}{4}$	3 $\frac{3}{4}$	3 $\frac{3}{4}$	3 $\frac{3}{4}$	4 $\frac{7}{8}$	5	5	5	5 $\frac{1}{8}$	5 $\frac{1}{8}$	5 $\frac{1}{8}$	5 $\frac{1}{4}$	5 $\frac{1}{4}$	5 $\frac{1}{4}$	"
115cm*	4.7	4.7	4.8	4.8	4.8	5.8	5.8	5.8	5.9	5.9	5.9	5.9	6.0	6.0	6.0	m.
150cm*	3.5	3.5	3.5	3.5	3.5	4.5	4.6	4.6	4.6	4.6	4.7	4.7	4.7	4.8	4.8	"
LINING A																
45"*	2 $\frac{5}{8}$	2 $\frac{7}{8}$	3 $\frac{1}{4}$	3 $\frac{1}{4}$	3 $\frac{1}{4}$	3 $\frac{1}{2}$	3 $\frac{3}{4}$	3 $\frac{3}{4}$	3 $\frac{7}{8}$	4 $\frac{1}{8}$	4 $\frac{1}{4}$	4 $\frac{3}{8}$	4 $\frac{3}{8}$	4 $\frac{3}{8}$	4 $\frac{3}{8}$	yds.
115cm**	2.4	2.7	3.0	3.0	3.0	3.2	3.5	3.5	3.6	3.8	3.9	3.9	4.0	4.0	4.0	m.
INTERFACING A																
20"	3 $\frac{1}{8}$	3 $\frac{1}{4}$	3 $\frac{1}{4}$	3 $\frac{1}{4}$	3 $\frac{1}{4}$	3 $\frac{3}{8}$	3 $\frac{3}{8}$	3 $\frac{1}{2}$	3 $\frac{1}{2}$	3 $\frac{1}{2}$	3 $\frac{1}{2}$	3 $\frac{5}{8}$	3 $\frac{5}{8}$	3 $\frac{5}{8}$	3 $\frac{5}{8}$	yds.
51cm	2.9	3.0	3.0	3.0	3.0	3.1	3.1	3.2	3.2	3.2	3.2	3.4	3.4	3.4	3.4	m.
TROUSERS B																
45"*	2 $\frac{3}{8}$	2 $\frac{5}{8}$	2 $\frac{5}{8}$	2 $\frac{5}{8}$	2 $\frac{3}{4}$	3 $\frac{1}{8}$	3 $\frac{1}{8}$	3 $\frac{1}{8}$	3 $\frac{1}{8}$	3 $\frac{1}{8}$	3 $\frac{1}{8}$	3 $\frac{3}{8}$	3 $\frac{1}{2}$	3 $\frac{3}{4}$	3 $\frac{7}{8}$	yds.
60"*	1 $\frac{3}{4}$	1 $\frac{3}{4}$	1 $\frac{3}{4}$	1 $\frac{7}{8}$	1 $\frac{7}{8}$	2 $\frac{5}{8}$	2 $\frac{5}{8}$	2 $\frac{5}{8}$	2 $\frac{3}{4}$	2 $\frac{7}{8}$	3	3	3	3	3	"
115cm*	2.2	2.4	2.4	2.4	2.6	2.9	2.9	2.9	2.9	2.9	2.9	3.1	3.2	3.4	3.6	m.
150cm*	1.6	1.6	1.6	1.6	1.8	2.4	2.4	2.4	2.6	2.7	2.7	2.8	2.8	2.8	2.8	"
LINING (POCKETS) B																
45"*	$\frac{1}{2}$	$\frac{1}{2}$	$\frac{1}{2}$	$\frac{1}{2}$	$\frac{1}{2}$	$\frac{1}{2}$	$\frac{1}{2}$	$\frac{1}{2}$	$\frac{1}{2}$	$\frac{1}{2}$	$\frac{1}{2}$	$\frac{1}{2}$	$\frac{1}{2}$	$\frac{1}{2}$	$\frac{1}{2}$	yds.
115cm**	0.5	0.5	0.5	0.5	0.5	0.5	0.5	0.5	0.5	0.5	0.5	0.5	0.5	0.5	0.5	m.
INTERFACING B																
20"	$\frac{5}{8}$	$\frac{5}{8}$	$\frac{5}{8}$	$\frac{5}{8}$	$\frac{3}{4}$	$\frac{3}{4}$	$\frac{3}{4}$	$\frac{3}{4}$	$\frac{7}{8}$	$\frac{7}{8}$	$\frac{7}{8}$	$\frac{7}{8}$	$\frac{7}{8}$	$\frac{7}{8}$	$\frac{7}{8}$	yds.
51cm	0.6	0.6	0.6	0.6	0.7	0.7	0.7	0.7	0.7	0.7	0.8	0.8	0.8	0.8	0.8	m.

BODY MEASUREMENTS

MISSSES'						WOMEN'S										
SIZES	10	12	14	16	18	20W	22W	24W	26W	28W	30W	32W	34W	36W	38W	
BUST	32½	34	36	38	40	42	44	46	48	50	52	54	56	58	60	ins.
	83	87	92	97	102	107	112	117	122	127	132	137	142	147	152	cm.
WAIST	25	26½	28	30	32	35	37	39	41½	44	46½	49	51½	54	56½	ins.
	64	67	71	76	81	89	94	99	105	112	118	124	131	138	144	cm.
HIP	34½	36	38	40	42	44	46	48	50	52	54	56	58	60	62	ins.
	88	92	97	102	107	112	117	122	127	132	137	142	147	152	157	cm.
BACK-NECK TO WAIST LENGTH	16	16¼	16½	16¾	17	17¼	17¾	17½	17⅝	17¾	17⅞	18	18⅞	18½	18¾	ins.
	40.5	41.5	42	42.5	43	44	44	44.5	45	45	45.5	46	46	47	47.5	cm.

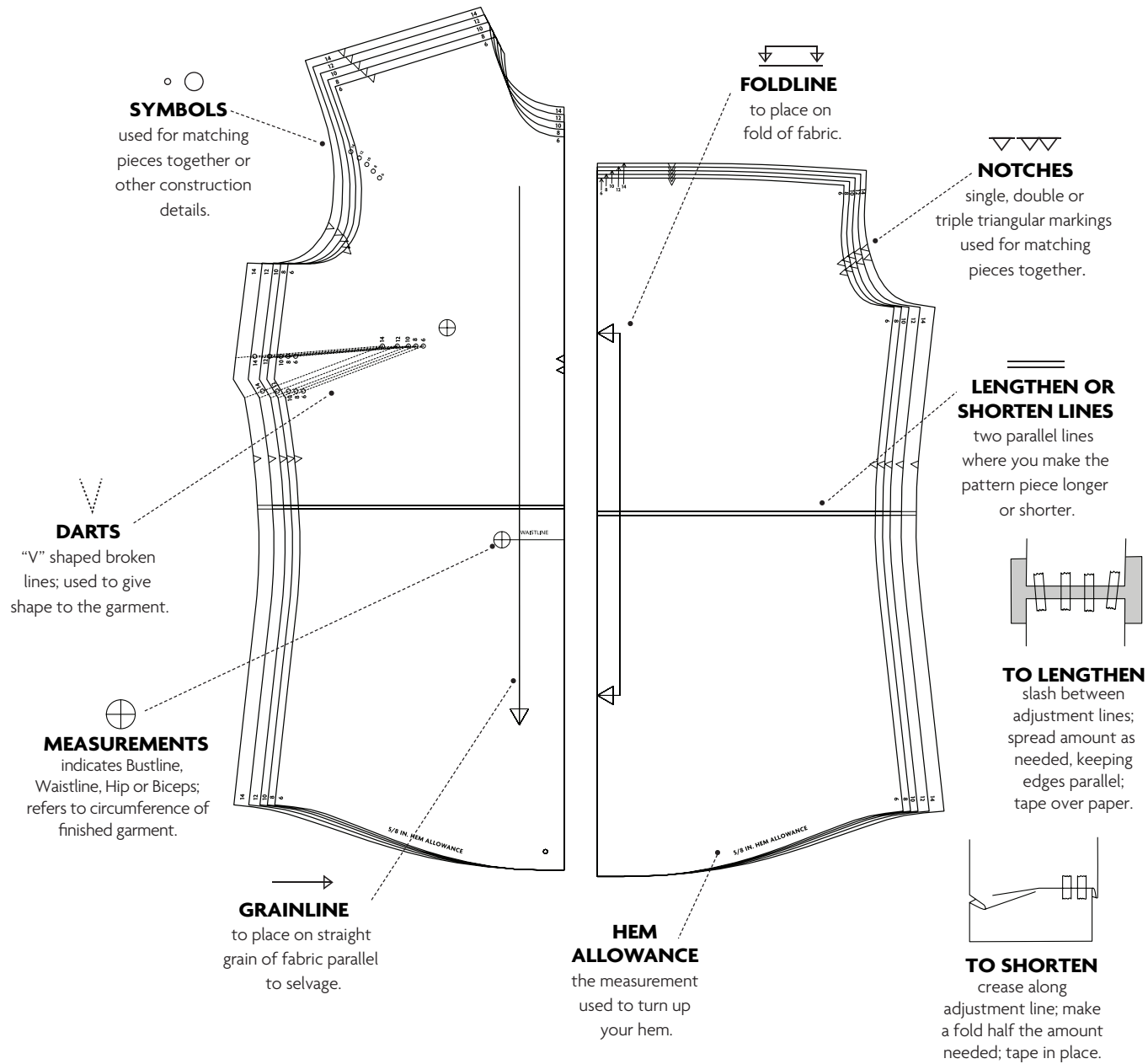
CUTTING AND MARKING

- > **SHRINK FABRIC** if not labeled pre-shrunk. Press.
- > **CIRCLE LAYOUT** for View, Size, Fabric Width.
- > Use **WITH NAP** layout for fabrics with one-way designs, nap, pile or surface shading. Because most knits have surface shading, a with nap layout is used.
- > For **DOUBLE THICKNESS (WITH FOLD)**, fold fabric with right sides together.
- > ***DOUBLE THICKNESS (WITHOUT FOLD)**, for fabrics with nap, fold fabric crosswise, right sides together. Mark as shown. Cut along crosswise fold of fabric (A). Turn upper layer 180° so arrows go in same direction and place over lower layer, right sides together (B).
- > For **SINGLE THICKNESS**, place fabric right side up. (For Fur Pile fabrics, place pile side down.)



- > Before **CUTTING**, place all pieces on fabric according to layout. Pin.
(Layouts show approximate position of pattern pieces; position may vary according to your pattern size.)
- > ★ Cut other pieces first, allowing enough fabric to cut this piece. Open fabric. Cut piece on single layer of fabric with piece face up on right side of fabric.
- > Cut accurately, cutting notches outward.
- > Before removing pattern, **TRANSFER MARKINGS** and lines of construction to **WRONG SIDE** of fabric, using Pin and Chalk Pencil method or Tracing Paper and Dressmaker Wheel. Markings needed on right side of fabric should be thread traced.
NOTE: Broken-line boxes (a! b! c!) in layouts represent pieces cut by measurements provided.
- > Prewash your fabric using a method that's suitable for the fabric type.
- > Fold fabric with right sides together, matching **SELVAGES**.
- > Pin your pattern pieces to the fabric as shown below and cut them out using a sharp pair of dressmaker's shears.

PATTERN MARKINGS



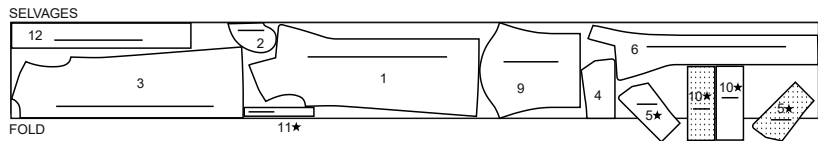
To customize your look like Beatejadore, see Sew Along video.

CUTTING LAYOUTS

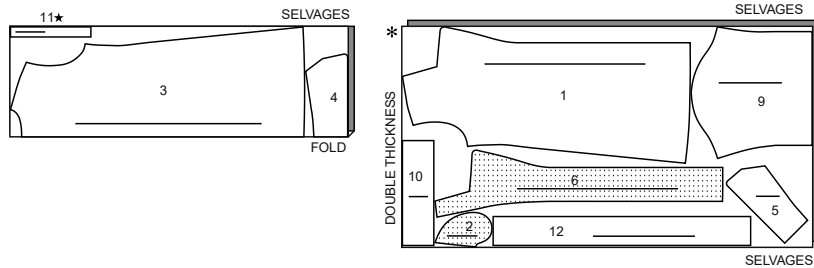
COAT A

use pieces: 1,2,3,4,5,6,9,10,11,12

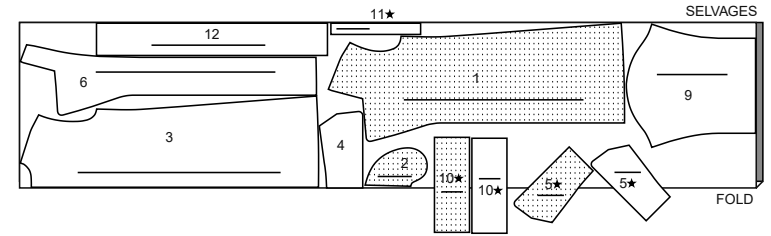
45" (115 cm)
with nap
sizes 10-12-14-16-18



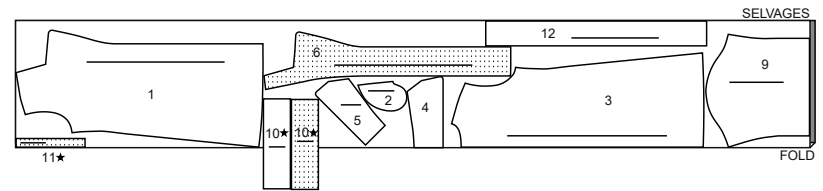
45" (115 cm)
with nap
sizes 20W-22W-24W-26W-28W-30W-32W-34W-36W-38W



60" (150 cm)
with nap
sizes 10-12-14-16-18



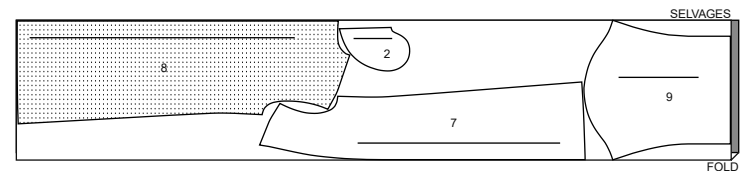
60" (150 cm)
with nap
sizes 20W-22W-24W-26W-28W-30W-32W-34W-36W-38W



LINING A

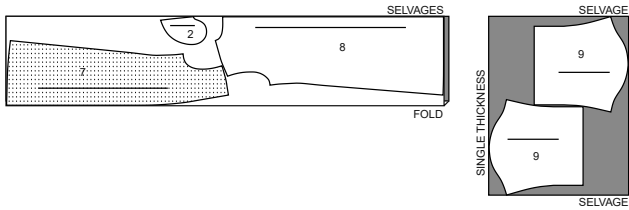
use pieces: 2,7,8,9

45" (115 cm)
without nap
sizes 10-12-14-16-18

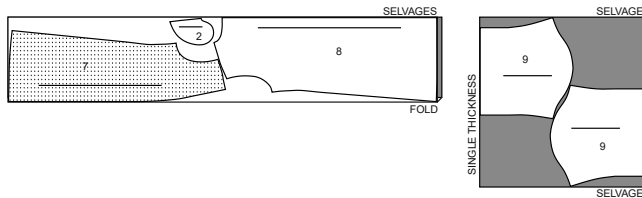


CUTTING LAYOUTS CONTINUED

45" (115 cm)
without nap
sizes 20W-22W-24W-26W-28W



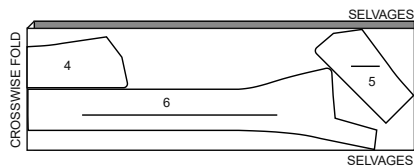
45" (115 cm)
without nap
sizes 30W-32W-34W-36W-38W



INTERFACING A

use pieces: 4,5,6

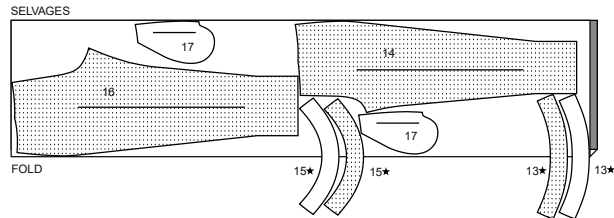
20" (51 cm)
all sizes



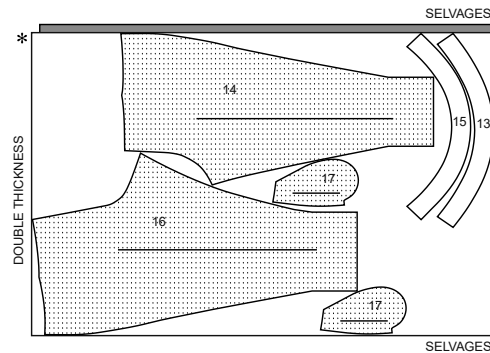
TROUSERS B

use pieces: 13,14,15,16,17

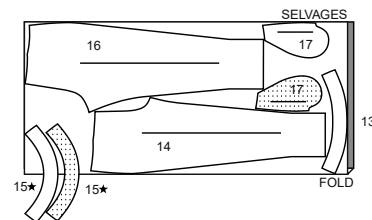
45" (115 cm)
with nap
sizes 10-12-14-16-18



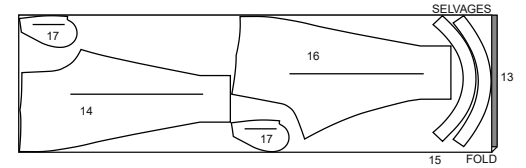
45" (115 cm)
with nap
sizes 20W-22W-24W-26W-28W-30W-32W-34W-36W-38W



60" (150 cm)
with nap
sizes 10-12-14-16-18



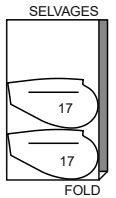
60" (150 cm)
with nap
sizes 20W-22W-24W-26W-28W-30W-32W-34W-36W-38W



LINING (POCKETS) B

use piece: 17

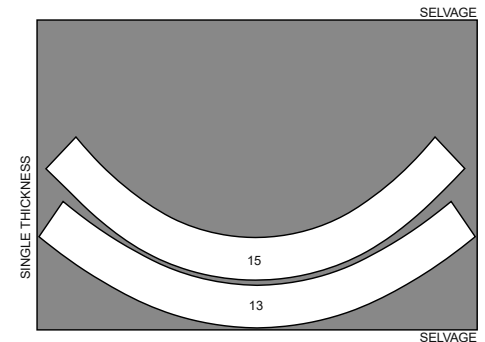
45" (115 cm)
without nap
all sizes



INTERFACING B

use pieces: 13,15

20" (51 cm)
all sizes



PATTERN PIECES WILL BE IDENTIFIED BY NUMBERS THE FIRST TIME THEY ARE USED.

SEWING INFORMATION

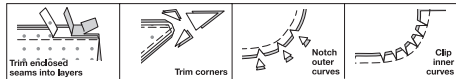
5/8" (1.5cm) SEAM ALLOWANCES ARE INCLUDED, (unless otherwise indicated)

ILLUSTRATION SHADING KEY

Right Side	Wrong Side	Interfacing	Lining	Underlining

Pin or baste seams, right side together, matching notches. Fit garment before stitching major seams.

Press seam allowances flat; then open unless otherwise stated. Clip where necessary so they lie flat.



GLOSSARY

Sewing terms appearing in **BOLD TYPE** in Sewing Instructions are explained below.

EASESTITCH - Stitch along seamline, using long machine stitches. Pull thread ends when adjusting to fit.

REINFORCE - Stitch along seamline where indicated in sewing instructions, using small machine stitches.

SLIPSTITCH - Slide needle through a folded edge, then pick up a thread of underneath fabric.

STAYSTITCH - Stitch 1/8" (3mm) from seamline in seam allowance (usually 1/2" (1.3cm) from raw edge).

UNDERSTITCH - Open out facing or underside of garment; stitch to seam allowance close to seam.



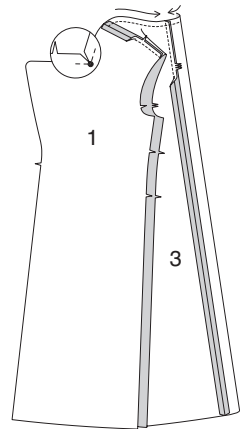
@beautejadore

SEWING DIRECTIONS

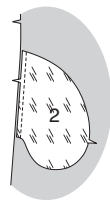
COAT A

NOTE: Trim 7/8" (2.2cm) from lower edge of SLEEVE (9) lining sections before stitching seams.

1. To **REINFORCE** neck edge of FRONT (1) sections at small dot, stitch along seam line for about 1" (2.5cm) each side of small dot, stitching through dots, as shown. Clip front to small dot at inner corner, being careful not to clip through stitching. **STAYSTITCH** neck edge of BACK (3). Stitch center back edges together of back sections. Pin front to back at shoulder edges. Stitch.



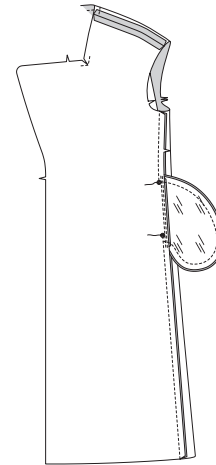
2. Apply pockets to side edges of front and back as follows: With right sides together, pin POCKET (2) lining to front and POCKET (2) to back, matching lower notch, having raw edges even. Stitch in 3/8" (1cm) seam.



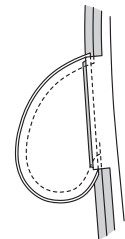
3. **UNDERSTITCH** front pocket. Press seams toward pockets, pressing pockets out.



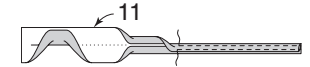
4. Pin front to back at side seams, matching large dots. Stitch side seams, leaving an opening between large dots. Stitch pocket edges together between the side seams.



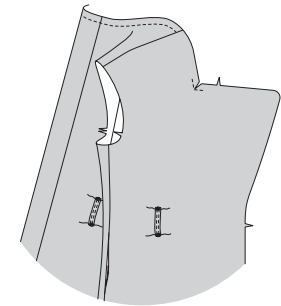
5. Clip coat back seam allowance above and below pocket. Press seam open above and below clips. Press pocket toward front.



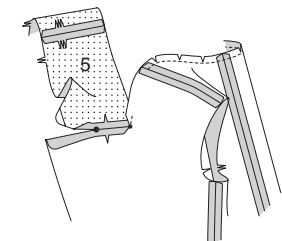
6. To make four carriers, fold CARRIERS (11) in half, lengthwise with wrong sides together. Press, setting in a crease. Open out long edges of carrier and turn them to wrong side so that they meet at the crease. Press. Fold carrier in half lengthwise, bringing pressed edges together. Stitch close to both long edges.



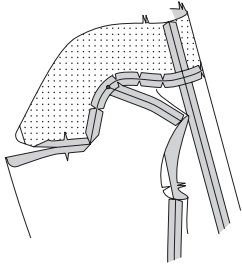
7. Cut carriers each 4" (10cm) long along cutting lines. Press under 1/2" (1.3cm) on ends. On outside, center carriers over small dots on front and back. Stitch in place close to pressed edges.



8. Trim corners from interfacing, as shown. Fuse interfacing to wrong side of UNDER COLLAR (5) sections, following manufacturer's instructions. Stitch under collar sections together at center back edges. With RIGHT sides together, pin front edge of under collar to jacket, matching notches, small and large dots. Stitch between small and large dots. Press seam open. Do Not trim this seam now. Clip back neck edge of jacket to stay-stitching along curves.



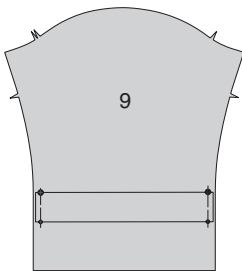
9. With right sides together, pin remaining edge of under collar to neck edge, matching centers back, placing inner small dot at shoulder seam. Stitch each side from center back to outer small dot. Trim neck seam; clip curves. Press seam open.



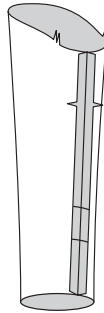
10. Fold TAB (10) along fold line with right sides together. Stitch long edge. Trim seam.



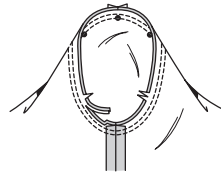
11. Turn tab; press. Baste raw edges together. Pin tab to SLEEVE (9), matching small and large dots, having raw edges even. Baste along seam allowance.



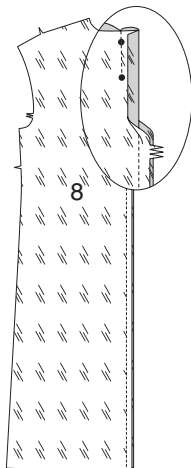
12. Stitch underarm seam of sleeve.



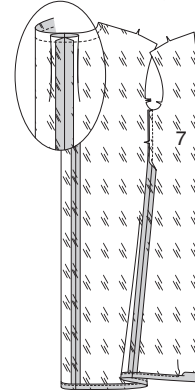
13. Turn sleeve right side out. Hold coat wrong side out with armhole toward you. With right sides together, pin sleeve to armhole edge with center small dot at shoulder seam, matching underarm seams, notches and remaining small dots. Baste. Stitch. Stitch again 1/8" (3mm) from first stitching. Trim seam below notches close to stitching. Press seam allowance toward sleeve, shrinking out fullness.



14. Stitch center back edges of BACK LINING (8). Press seam open. To form back pleat, stitch along stitching lines between the small dots.

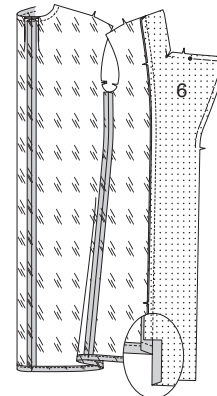


15. Press pleat flat bringing stitching to center. **STAYSTITCH** back lining neck edge. Pin back lining to FRONT LINING (7) at side edges. Press up 1-1/4" (3.2cm) on lower edge of lining. Turn under raw edge 1/4" (6mm). Stitch close to inner pressed edge.



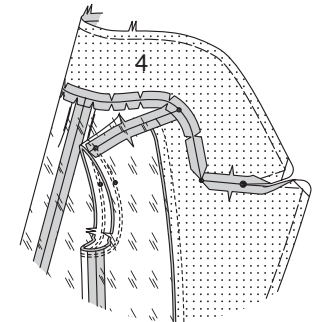
16. Trim corners from interfacing, as shown. Fuse interfacing to wrong side of FRONT FACING (6) sections, following manufacturer's instructions. **REINFORCE** small dot at inner corner and clip to small dot same as for front. **EASESTITCH** lapel and front edge from large dot to the notch.

With right sides together, pin front facing to front lining matching notches. Stitch, backstitching at lining hem to reinforce. Clip only the facing seam allowance 1" (2.5cm) above lower edge of lining. Press seam toward lining, pressing under 5/8" (1.5cm) on inner edge of facing below clip, as shown.

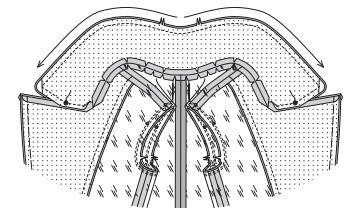


17. Stitch front lining and facing to back lining at shoulder edges. Clip neck edge of back lining to staystitching along curves. Stitch underarm seam of sleeve lining and stitch to coat lining in the same manner as for coat.

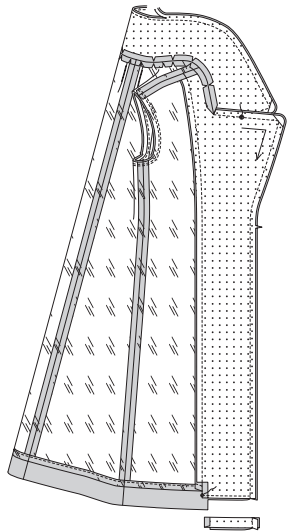
Trim corners from interfacing, as shown. Fuse interfacing to wrong side of UPPER COLLAR (4) sections, following manufacturer's instructions. **EASESTITCH** upper collar from large dot to double notch. With right sides together, pin upper collar to neck edge of front facing and lining, matching centers back, small and large dots, placing inner small dots at shoulder seams. Stitch between large dots, pivoting with needle in fabric at inner corners. Trim back neck seam between shoulder seams; clip curves. Press seams open.



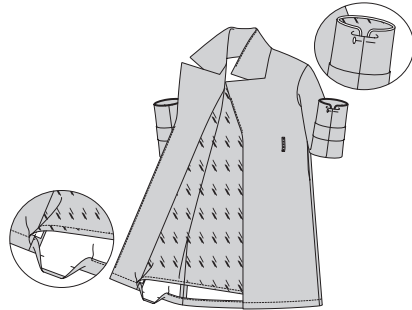
18. With RIGHT sides together, pin upper collar to under collar, matching centers back, small and large dots. Turn neck seam allowances down. Pin outer edges of upper and under collar together between large dots, working from center back to large dot, pulling up ease stitches to fit. Baste. Stitch as basted from center back to large dot. Anchor thread ends securely at large dots.



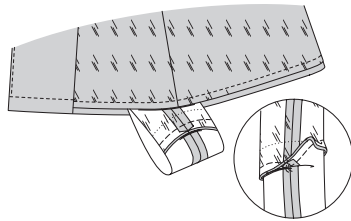
19. Pin front facing to jacket, matching small and large dots, pulling up ease stitching on front facing to fit. Turn neck seam allowance toward collar. Insert machine needle at the large dot. Baste from large dot to notch. Stitch as basted and to lower small dot. Backstitch at small dot to reinforce seam. Anchor thread ends securely at large dots. Trim across collar and lapel corners. Trim seam of collar and facing to within 1/4" (6mm) of stitching. Trim coat to within 5/8" (1.5cm) of inner edge of facing. Press all seams before turning.



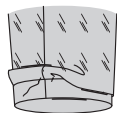
20. UNDERSTITCH the undercollar, the facing below the notch, and the coat lapel above the notch, as shown. Turn facing and lining to inside; press, pressing up hem allowance. Press under 1/4" (6mm) on raw edge. Stitch hem in place between opening edges, breaking stitching at inner edge of facing. Slip sleeves in place. To match seams correctly, turn seam allowances on sleeve edges of coat and lining toward each other at underarm seams, as shown. Anchor turned edges with a pin.



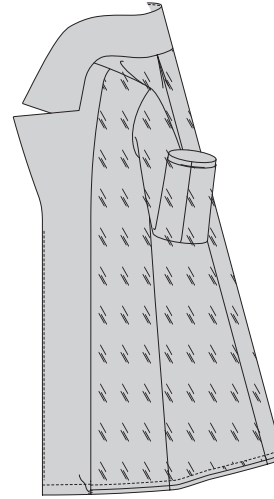
21. Pull sleeve through lower edge of coat, having wrong sides out, separating the coat sleeve from the lining sleeve. With RIGHT sides together, pin sleeve edges together, matching underarm seams. Remove anchoring pin. Stitch sleeve edge. Trim seam.



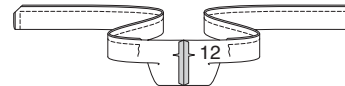
22. Turn up sleeve hem allowance; press. Tack hem to seam, as shown. If you prefer, catch-stitch sleeve hem in place.



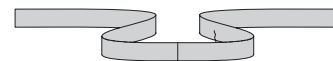
23. Turn sleeve lining to INSIDE; press. Slip hand through opening in lower edges of coat. Tack neck, armhole and underarm seams of coat and lining together loosely. Allow coat and sleeve lining to drop. Slip-stitch front facing to hem.



24. Stitch notched ends of BELT (12) sections. Fold belt in half, lengthwise, with RIGHT sides together. Stitch, leaving an opening to turn. Trim seam and corners.



25. Turn belt; press. **SLIPSTITCH** opening edges together. Thread belt through carriers; tie when wearing.

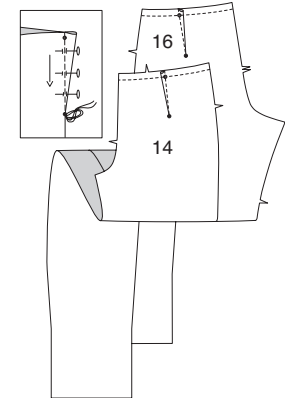


TROUSERS B

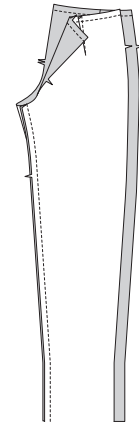
1. To make darts in FRONT (14) and BACK (15), with right sides together, fold the fabric through the center of the dart, bringing broken lines and small dots together. On inside, place pins at right angles to the broken lines. Stitch the dart from wide end to point.

TIP - To prevent a "bubble" at the point, make the last few stitches right on the fold and leave the thread ends long enough to tie a knot. **DO NOT** back-stitch at the point. Press the dart flat along the stitching to "blend" the stitches, then press dart toward center.

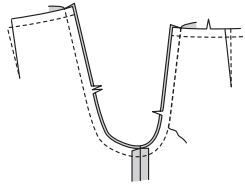
STAYSTITCH upper edge of pant sections.



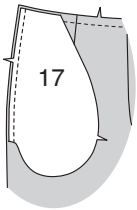
2. Stitch front to back at inner leg seams.



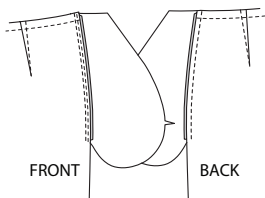
3. With right sides together, pin center seam, matching inner leg seams and notches. Stitch. To reinforce the seam, stitch again over previous stitching.



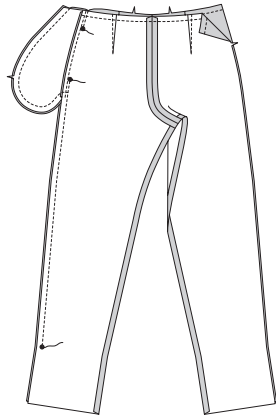
4. FOR RIGHT POCKET - Apply pocket (17) to front and back as follows: With right sides together, pin pocket to right side edges of trouser front and trouser back, matching notches, and having raw edges even. Stitch in a 3/8" (1cm) seam.



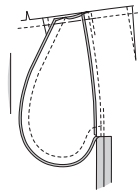
5. UNDERSTITCH the front pocket. Press seam toward pockets, pressing pockets out.



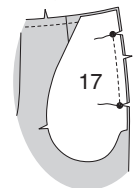
6. Pin front to back at right side seam, matching large dots. Stitch side seam from upper edge to lowest large dot, leaving an opening between inner large dots. Stitch notched edges of pocket together.



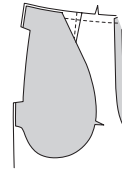
7. Clip garment back seam allowance at end of pocket, as shown. Press seam open below clips. Press pocket toward front. Baste upper edge of pocket to seam allowance.



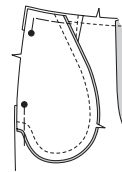
8. FOR LEFT POCKET - Pin POCKET (17) to left edge of trouser front with right sides together, matching notches, and having raw edges even. Stitch seam between large dots. Backstitch at large dots to reinforce seam. Clip seam to stitching at large dots.



9. Turn pocket to inside, turning out seam allowances above and below clips; press.

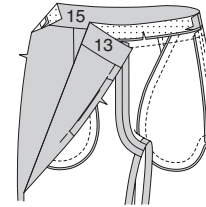


10. With right sides together, pin remaining pocket section to front and pocket, matching large dots and having raw edges even. Stitch long curved edges of pockets together. Baste remaining raw edges of front and pocket together.

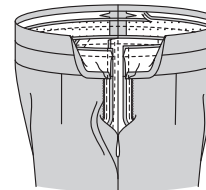


11. Fuse interfacing to wrong side of **FRONT WAISTBAND (13)** and **BACK WAISTBAND (15)**, following manufacturer's instructions. Stitch front waistband to back waistband at **RIGHT** side seam. Stitch waistband to upper edge of trousers, matching centers, notches, and seams. Press out waistband, pressing seam toward waistband. Pin pocket opening edge away from seam allowance. Insert invisible zipper into **LEFT** side openings of trousers, following manufacturer's directions, stitching to the lowest large dot, being careful not to catch in finished edge of pocket.

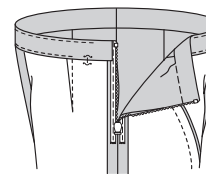
Tack free end of zipper to seam allowance.



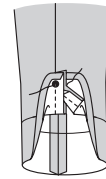
12. Stitch right side edges of waistband facing. Press under 1/2" (1.3cm) on lower edge of facing. Trim to 1/4" (6mm). Open out left side opening edges of trousers, rolling the zipper teeth away from the opening edge. With right sides together, pin facing to waistband, matching centers and side seams. Stitch upper edge. Trim seam. Pin left side opening edges together. Using an adjustable zipper foot, stitch 1/2" (1.3cm) from left side edges, keeping zipper teeth free. Trim corners. Do not trim center back edges.



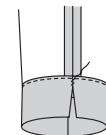
13. UNDERSTITCH the facing as far as possible. Turn facing and back edges to inside, rolling zipper teeth back in place; press. Pin pressed edge of facing over seam, placing pins on outside. On outside, stitch in the ditch of the seam, catching in pressed edge of facing on inside.



14. To finish lower edge of trousers, press under 1/2" (1.3cm). At slit opening edges, turn hem allowance to **OUTSIDE**, along fold line. Stitch ends in 5/8" (1.5cm) seams from lower edge to large dot, backstitching at dot to reinforce the seam. Trim seams.



15. Turn hem to **INSIDE**, pressing open side seam allowances. Stitch hem in place along stitching line. **SLIPSTITCH** side edges of hem together above the large dot. If you prefer to crease trousers, fold leg edges together, matching side and inner leg seam; press. **TIP -** For a professional touch, make a bar tack at upper end of slit with narrow zig-zag stitches. This will reinforce the slit area and prevent seam from opening due to everyday wear.





Congrats!


You've completed your sewing adventure!

SHARE YOUR look!



Post your pattern and tag us at
@knowmepatterns and use #knowmepatterns
for a chance to be featured on our social media!

Look for more Know Me PDF patterns at [SomethingDelightful.com/know-me/](https://www.somethingdelightful.com/know-me/)

 1-800-255-2762

© 2022 KnowMe® an IG Design Group Americas, Inc. brand. | All Rights Reserved.
Sold for individual home use only and not for commercial or manufacturing purposes.