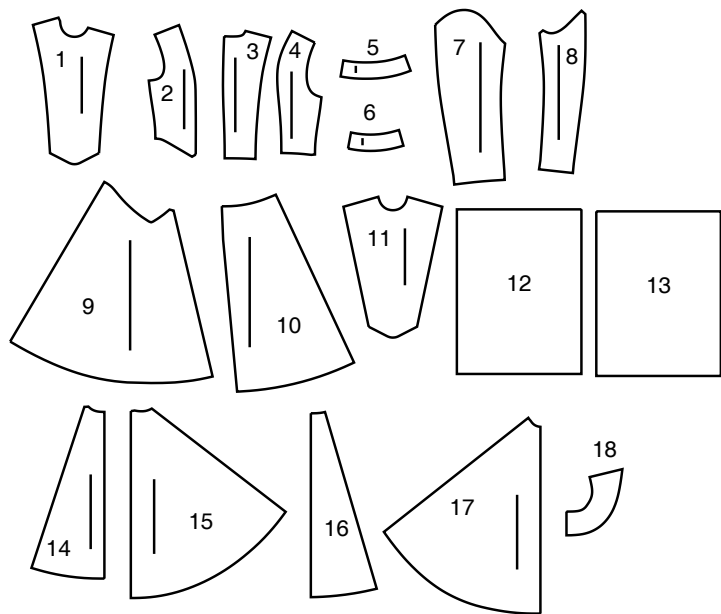
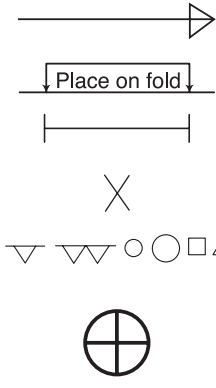


18 PATTERN PIECES



- 1 FRONT - A,B
- 2 SIDE FRONT - A,B
- 3 BACK - A,B
- 4 SIDE BACK - A,B
- 5 COLLAR - A,B
- 6 COLLAR FRONT - A,B
- 7 UPPER SLEEVE - A,B
- 8 UNDERSLEEVE - A,B
- 9 LOWER FRONT - A
- 10 LOWER BACK - A
- 11 FRONT PANEL - A,B
- 12 GUIDE FOR PLACEMENT - A
- 13 GUIDE FOR QUILTING - B
- 14 FRONT - C
- 15 SIDE FRONT - C
- 16 BACK - C
- 17 SIDE BACK - C
- 18 COLLAR - C



PATTERN MARKINGS

GRAINLINE: Place on straight grain of fabric, parallel to selvage or fold.

FOLDLINE: Place line on fold of fabric.

BUTTONHOLE MARKING: Indicates exact length and placement of buttonholes.

BUTTON MARKING: Indicates button placement.

NOTCHES AND SYMBOLS: For matching seams and construction details.

Indicates the Bustline, Waistline, Hip and/or Biceps. Measurements refer to circumference of Finished Garment (Body Measurement + Wearing Ease + Design Ease). Adjust pattern if necessary. The measurement excludes pleats, tucks, darts and seam allowances.

SEAM ALLOWANCE: 5/8" (1.5cm) included unless otherwise indicated, but not printed on tissue.

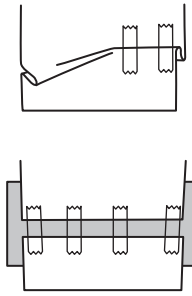
ADJUST IF NECESSARY

Lengthen or Shorten at adjustment lines (==) or where indicated on pattern. If substantial length is added, you may need to purchase additional fabric.

TO SHORTEN: Crease along adjustment line. Make a fold half the amount needed. Tape in place.

TO LENGTHEN: Slash between adjustment lines. Spread amount as needed, keeping edges parallel. Tape over paper.

When Alteration lines are not on tissue, lengthen or shorten at lower edge.



CUTTING AND MARKING

SHRINK FABRIC if not labeled pre-shrunk. Press.

CIRCLE LAYOUT for View, Size, Fabric Width.

Use **WITH NAP** layout for fabrics with one-way designs, nap, pile or surface shading. Because most knits have surface shading, a with nap layout is used.

For **DOUBLE THICKNESS (WITH FOLD)** - fold fabric with right sides together.

*** DOUBLE THICKNESS (WITHOUT FOLD)** - For fabrics with nap, fold fabric crosswise, right sides together. Mark as shown. Cut along crosswise fold of fabric (A). Turn upper layer 180° so arrows go in same direction and place over lower layer, right sides together (B).

For **SINGLE THICKNESS** - place fabric right side up. (For Fur Pile fabrics, place pile side down.)

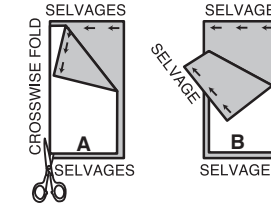
★ Cut other pieces first, allowing enough fabric to cut this piece. Open fabric. For "Cut 1" pieces, cut piece once on single layer of fabric with piece face up on right side of fabric.

Pattern may have cutting lines for several sizes. Select the proper cutting line or pattern pieces for your size.

Before **CUTTING** place all pieces on fabric according to layout. Pin. (**Layouts show approximate position of pattern pieces; position may vary according to your pattern size.**) Cut **ACCURATELY**, cutting notches outward.

Before removing pattern, **TRANSFER MARKINGS** and lines of construction to Wrong Side of fabric, using the Pin and Chalk Pencil method or Tracing Paper and Dressmaker Wheel. Markings needed on right side of fabric should be thread traced.

NOTE: Broken-line boxes (a! b! c!) in layouts represent pieces cut by measurements provided.



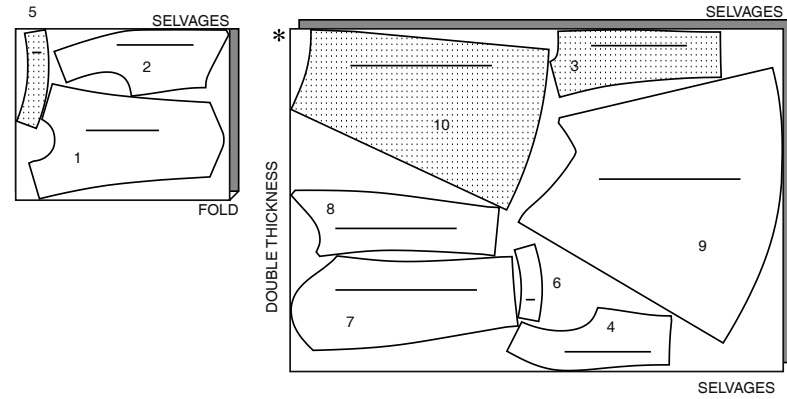
CUTTING LAYOUTS

RIGHT SIDE OF PATTERN	WRONG SIDE OF PATTERN	RIGHT SIDE OF FABRIC	WRONG SIDE OF FABRIC

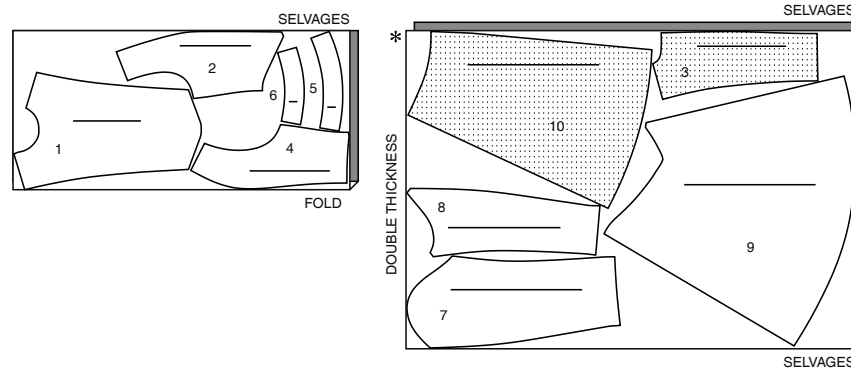
COAT A

USE PIECES 1 2 3 4 5 6 7 8 9 10

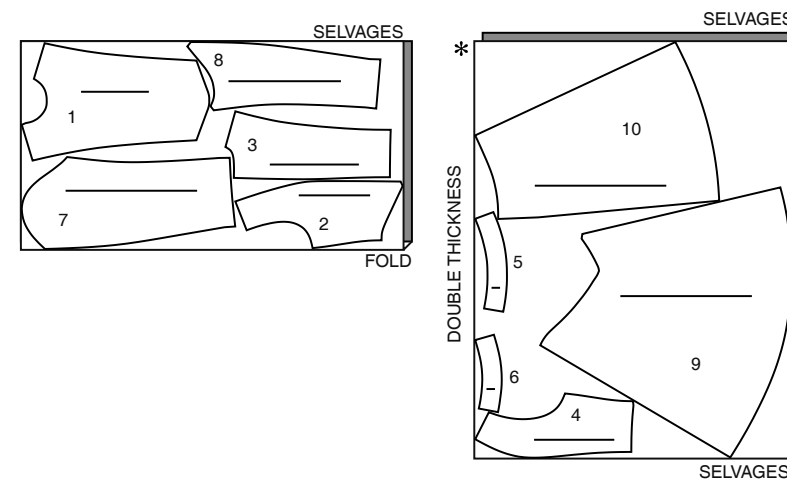
45" (115CM)
WITH NAP
SIZES 34 36 38 40 42 44 46



45" (115CM)
WITH NAP
SIZES 48 50 52



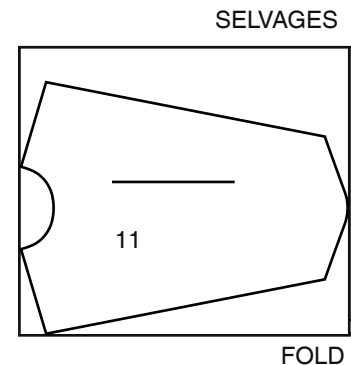
60" (150CM)
WITH NAP
ALL SIZES



CONTRAST A (FRONT PANEL)

USE PIECE 11

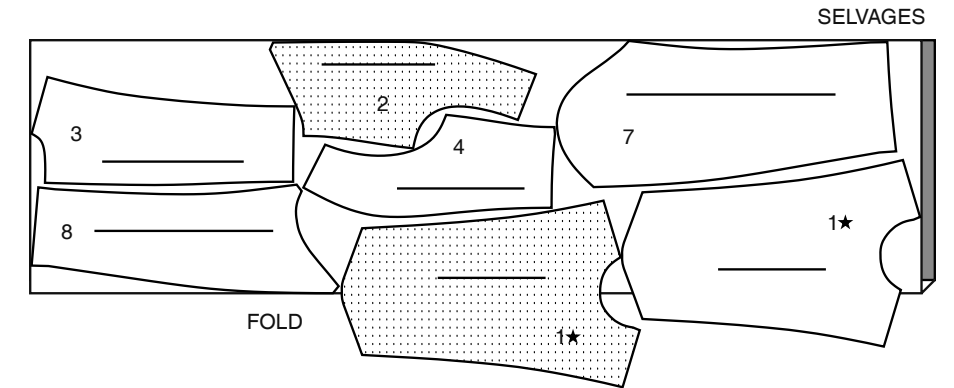
45" (115CM)
WITH NAP
ALL SIZES



LINING A,B

USE PIECES 1 2 3 4 7 8

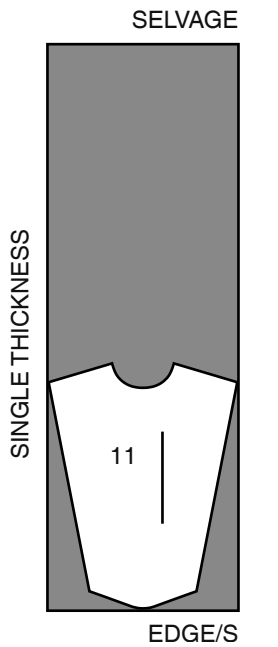
45" (115CM)
WITHOUT NAP
ALL SIZES



PADDING A,B

USE PIECE 11

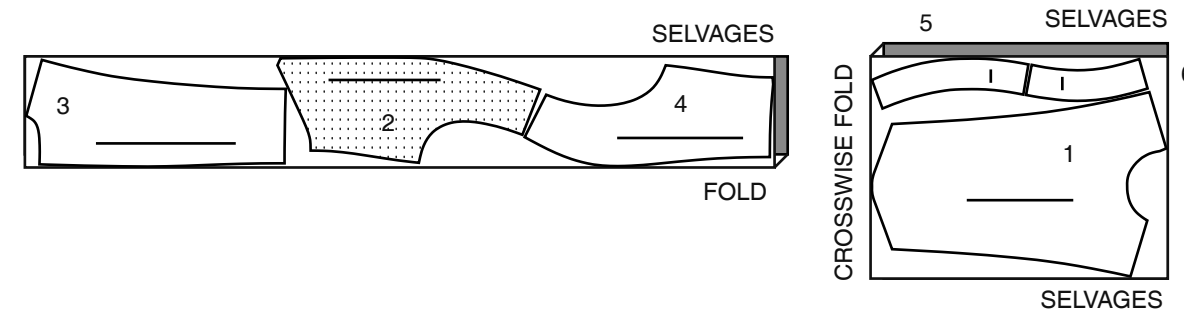
60" (150CM)
ALL SIZES



INTERFACING A,B

USE PIECES 1 2 3 4 5 6

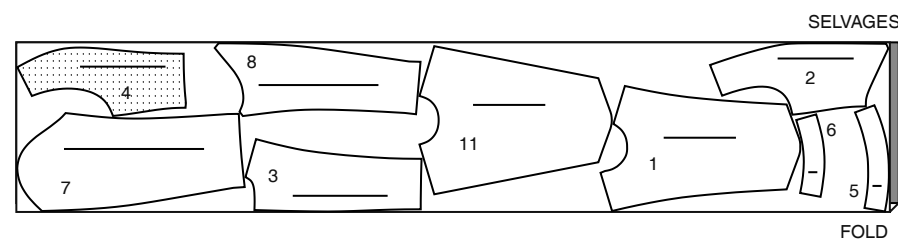
20" (51CM)
ALL SIZES



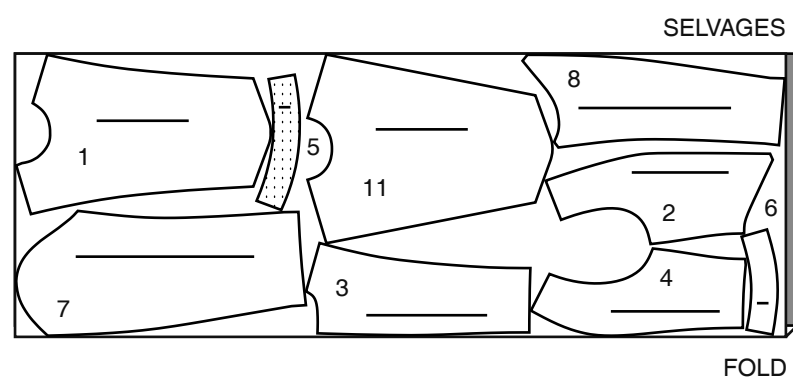
JACKET B

USE PIECES 1 2 3 4 5 6 7 8 11

45" (115CM)
WITH NAP
ALL SIZES



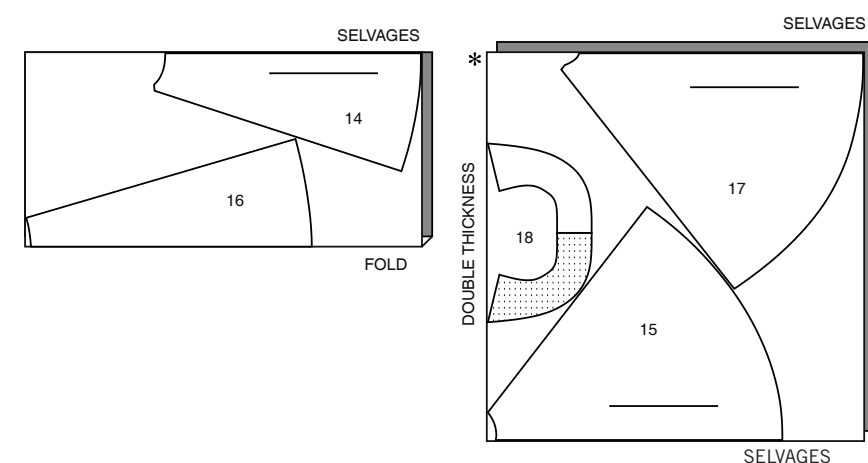
60" (150CM)
WITH NAP
ALL SIZES



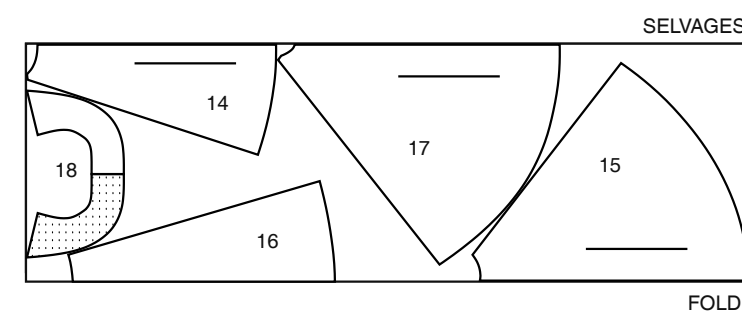
CAPE C

USE PIECES 14 15 16 17 18

45" (115CM)
WITH NAP
ALL SIZES



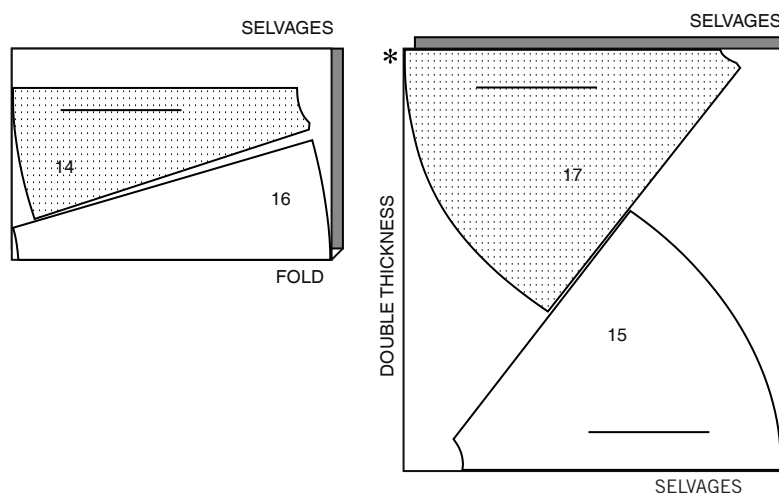
60" (150CM)
WITH NAP
ALL SIZES



LINING C

USE PIECES 14 15 16 17

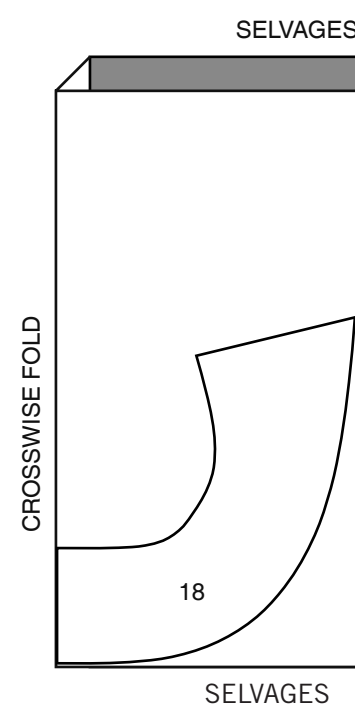
45" (115CM)
WITHOUT NAP
ALL SIZES



INTERFACING C

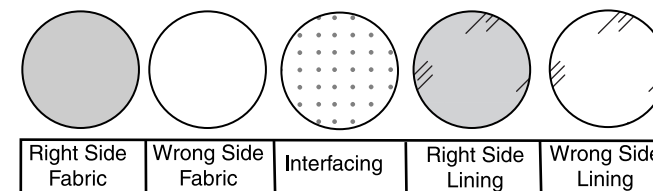
USE PIECE 18

20" (51CM)
ALL SIZES



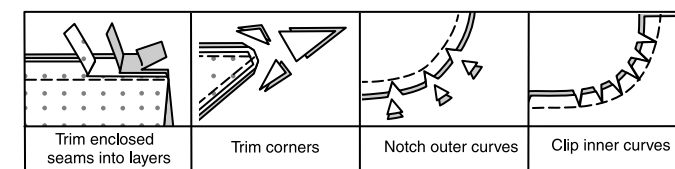
SEWING INFORMATION

FABRIC KEY



SEAM ALLOWANCES

Use 5/8" (1.5cm) seam allowances unless otherwise indicated.



PIN AND FIT

Pin or baste seams, **RIGHT SIDE TOGETHER**, matching notches. Fit garment before stitching major seams.

PRESS

Press seam allowances flat; then open unless otherwise stated. Clip where necessary so they lie flat.

GLOSSARY

Sewing methods in **BOLD TYPE** have Sewing Tutorial Video available. Scan QR CODE to watch videos:

CATCH STITCH – See **Hand Stitching**: “hand sewing a catch stitch” video.

EASE/GATHER – See **Gathering**: “sewing two row gathers” video.

EDGESTITCH – See **Machine Stitches**: “how to sew an edgestitch” video.

NARROW HEM – See **Hems**: “sewing narrow hems” video.

SET IN SLEEVE – See **Armholes/Sleeves**: “sewing a set in sleeve” video.

SLIPSTITCH – See **Hand Stitching**: “how to slip stitch” video.

STAYSTITCH – See **Machine Stitches**: “how to do stay stitching” video.

TRIM SEAM – See **Seams**: “how to trim, clip and layer seams” video.

UNDERSTITCH – See **Machine Stitches**: “how to understitch” video.

SEWING TUTORIALS



Build your skills viewing short, easy-to-follow videos at simplicity.com/sewingtutorials

PATTERN PIECES WILL BE IDENTIFIED BY NUMBERS THE FIRST TIME THEY ARE USED.

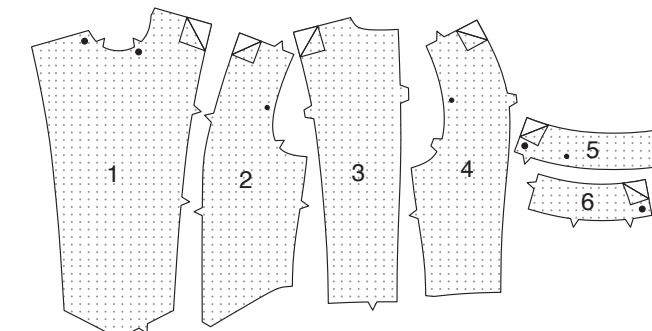
STITCH 5/8" (1.5CM) SEAMS WITH RIGHT SIDES TOGETHER UNLESS OTHERWISE STATED.

COAT A, JACKET B

NOTE: Trim 1" (2.5cm) away from lower edge of **UPPER SLEEVE (7) LINING** and **UNDERSLEEVE (8) LINING** sections before stitching seams.

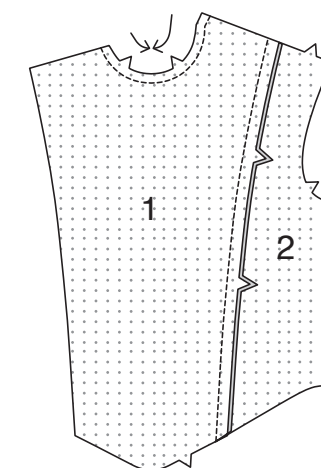
INTERFACING

1. Pin interfacing to **WRONG** side of **FRONT (1)**, **SIDE FRONT (2)**, **BACK (3)**, **SIDE BACK (4)**, **COLLAR (5)**, and **COLLAR FRONT (6)**. Fuse interfacing in place following manufacturer's directions.

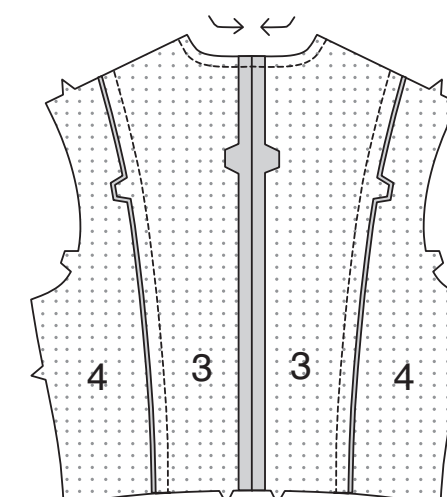


FRONT AND BACK

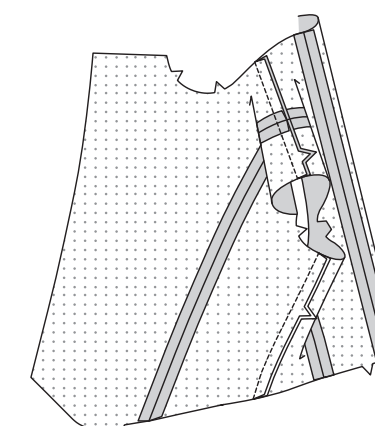
2. To **STAYSTITCH** neck edge of **FRONT (1)**, stitch 1/2" (1.3cm) from cut edge in direction of arrows. This stitching stays in permanently to prevent stretching on curved edges. (Shown only in the first illustration.) With **RIGHT** sides together and raw edges even, pin front to **SIDE FRONT (2)**, matching notches. Stitch.



3. Stitch center back edges of **BACK (3)**. **STAYSTITCH** neck edge in the direction of the arrows. With **RIGHT** sides together and raw edges even, pin back to **SIDE BACK (4)**, matching notches. Stitch.

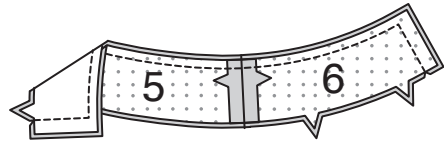


4. Stitch front to back at shoulder and side edges.

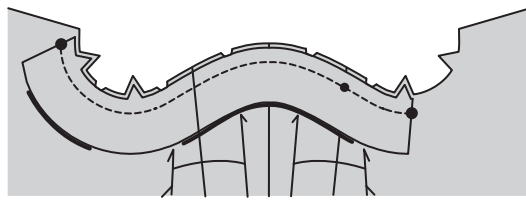


COLLAR

5. Stitch COLLAR (5) to COLLAR FRONT (6) at notched ends. Stitch collar facing sections in the same manner. With RIGHT sides together and raw edges even, pin collar to facing, matching seams. Stitch upper edges together in a 3/8" (1cm) seam. Stitch ends. **TRIM SEAM.**

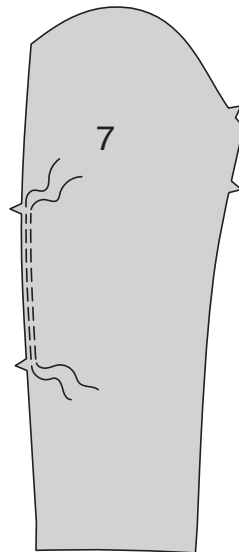


6. Turn collar; press. Baste raw edges together. Clip neck edge of garment to staystitching along curves. On OUTSIDE, pin collar to garment, matching centers, large dots, notches, and collar seam to LEFT shoulder seam, placing inner small dot at RIGHT shoulder seam. Baste; stitch. **DO NOT TRIM SEAM.**

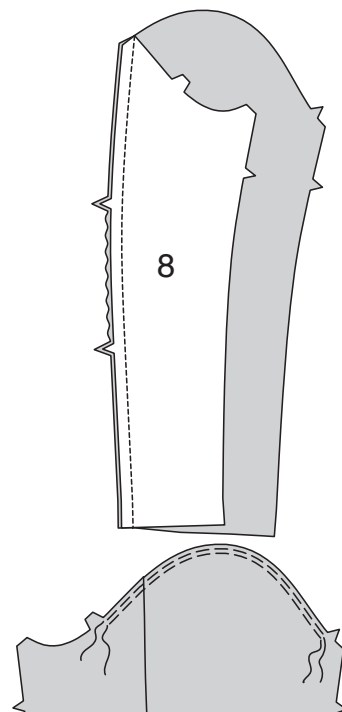


sleeve

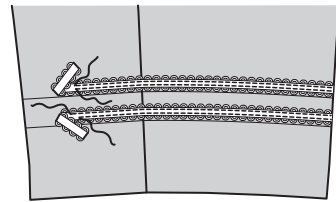
7. To **EASE** back edge of UPPER SLEEVE (7) between the notches, loosen needle tension slightly. On OUTSIDE, stitch 5/8" (1.5cm) from cut edge using a long stitch. Stitch again 1/4" (6mm) from the first stitching within the seam allowance.



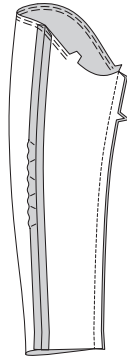
8. With RIGHT sides together and raw edges even, pin upper sleeve to UNDERSLEEVE (8) along back edges, matching notches, pulling up ease stitches to fit. Stitch. **EASE** upper edge of sleeve between the notches.



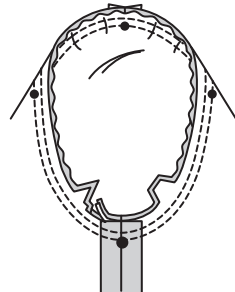
9. **FOR VIEW B** – Cut a piece of 5/8" (1.5cm) gimp braid the length of each placement line. On OUTSIDE, pin braid sections to sleeve with raw edges even, placing lower edges along placement lines. Stitch along both long edges of braid.



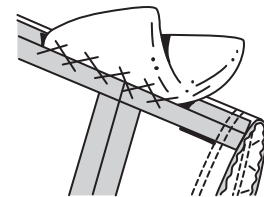
10. **FOR BOTH VIEWS** – Stitch underarm edges together matching notches.



11. To **SET IN SLEEVE**, turn sleeve RIGHT side out. Hold garment WRONG side out with armhole toward you. With RIGHT sides together, pin sleeve to armhole edge with center small dot at shoulder seam, large dot at side seam, matching notches and remaining small dots. Pull up ease stitches to fit. To distribute fullness evenly, slide fabric along bobbin threads until there are no puckers or tucks on the seam line. Baste. Stitch. Stitch again 1/8" (3mm) from first stitching. Trim seam below notches close to stitching. Press only the seam allowance, shrinking out fullness.

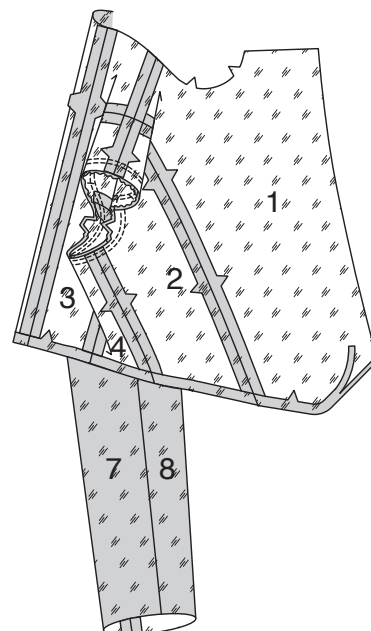


12. Try on garment. Insert shoulder pad and adjust to fit, so it is looking good and feeling comfortable. Remove garment. On INSIDE, **CATCH STITCH** pad to shoulder seam.

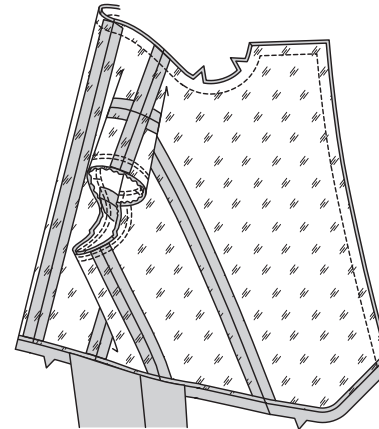


LINING

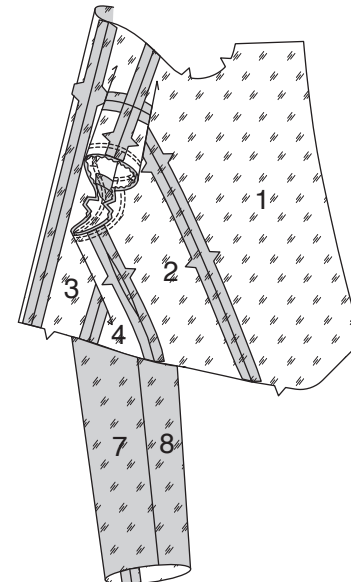
13. **FOR VIEW A** – Stitch seams of lining same as for garment. Press under 5/8" (1.5cm) on lower edge of front and back. Trim to 1/4" (6mm).



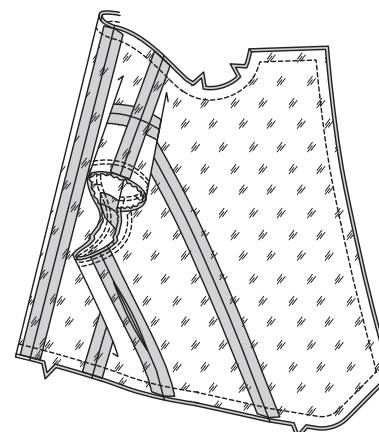
14. Turn collar down along neck edge, exposing raw edges of seam. With RIGHT sides together and raw edges even, pin lining to garment along neck and front edges. Stitch. **TRIM SEAM.**



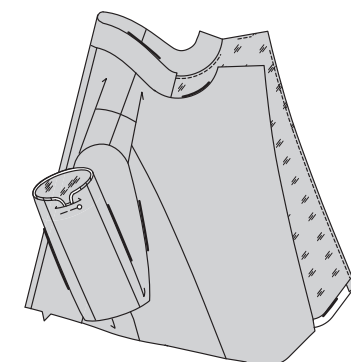
15. **FOR VIEW B** – Stitch seams of lining same as for garment, leaving an opening in one side seam for turning.



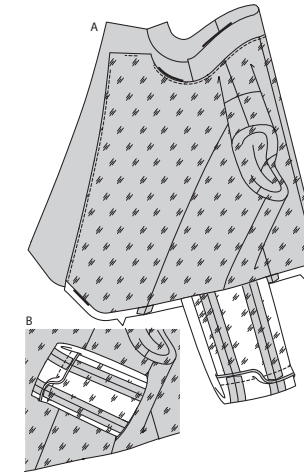
16. Turn collar down along neck edge, exposing raw edges of seam. With RIGHT sides together and raw edges even, pin lining to garment along neck, front, and lower edges. Stitch. **TRIM SEAM.**



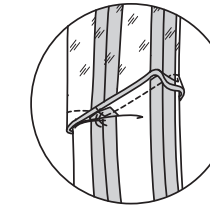
17. **FOR BOTH VIEWS** – **UNDERSTITCH** the front and neck edges of lining as far as possible. Turn garment RIGHT side out through opening; press, pressing out the collar. Turn lining to INSIDE; press. Slip sleeves in place. To match seams correctly, turn seam allowances on sleeve edges of coat and lining toward each other at underarm seams, as shown. Anchor the turned edges with a pin. (This will enable you to pin the lower edges together more easily when you are ready to stitch the sleeve edges together.)



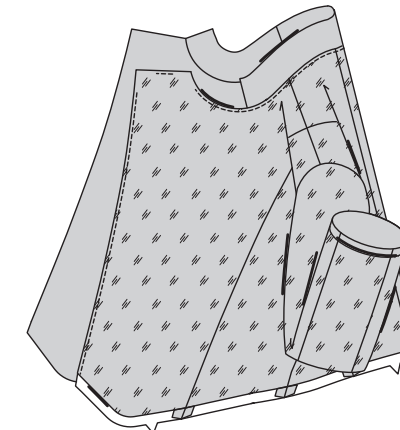
18. Pull sleeve through opening of garment, having WRONG sides out, separating the garment sleeve from the lining sleeve. With RIGHT sides together, pin sleeve edges together, matching underarm seams. Remove anchoring pin. Stitch sleeve edge. Trim seam.



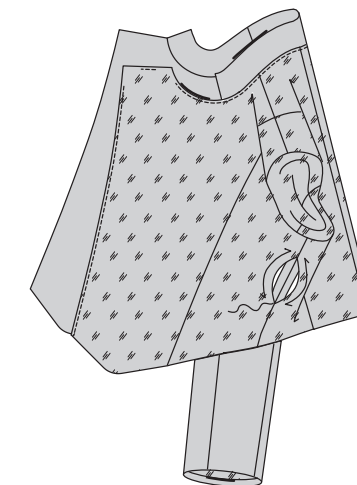
19. Turn up sleeve hem allowance. Tack hem to seam, as shown. If you prefer, catch-stitch sleeve hem in place.



20. Turn sleeve lining to INSIDE; press. If you prefer, slip hand through opening in garment. Tack neck, armhole and underarm seams of coat and lining together loosely.

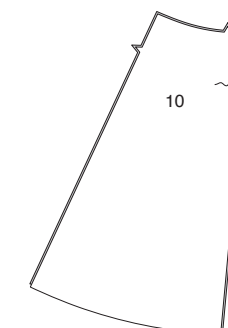


21. **FOR VIEW B** – **SLIPSTITCH** opening in lining closed.

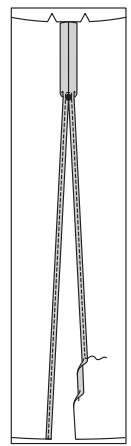


LOWER FRONT AND BACK A

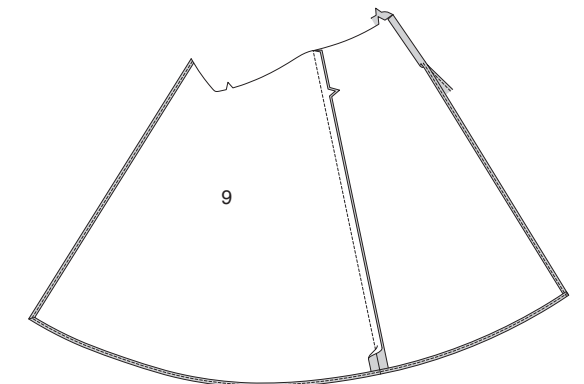
22. Stitch center back edges of LOWER BACK (10) from upper edge to large dot, back-stitching at dot to reinforce the seam.



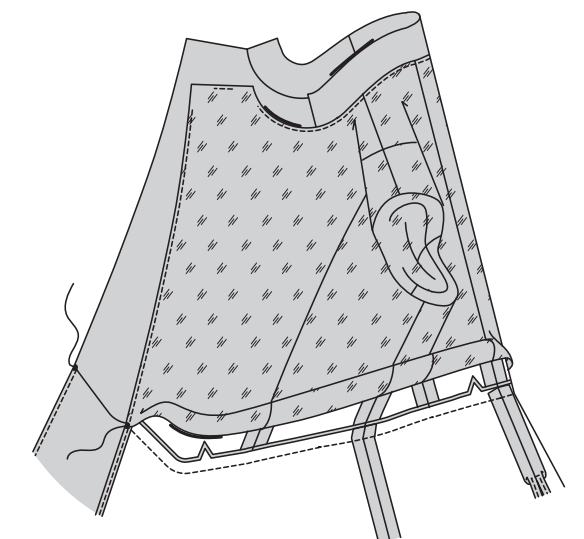
23. Press under 5/8" (1.5cm) hem allowance on slit back opening edges. To form a **NARROW HEM**, tuck under raw edge to meet crease. Press. **EDGESTITCH** hem in place, squaring stitching 1/4" (6mm) above large dot.



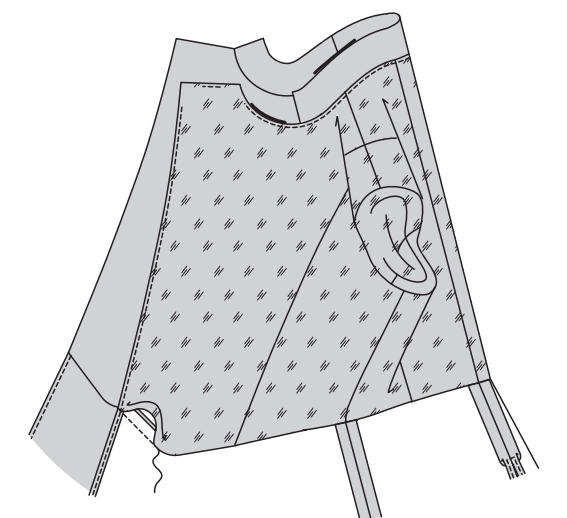
24. With RIGHT sides together and raw edges even, pin lower back to LOWER FRONT (9), matching notches. Stitch. **NARROW HEM** front and lower edge of garment.



25. On INSIDE, move lower edge of lining away from seam allowance of upper coat. With RIGHT sides together and raw edges even, pin upper edge of lower coat to lower edge of upper coat, matching centers, seams, small dots, and notches. Stitch between the small dots, back-stitching at dots to reinforce the seam. Press seam toward upper coat.

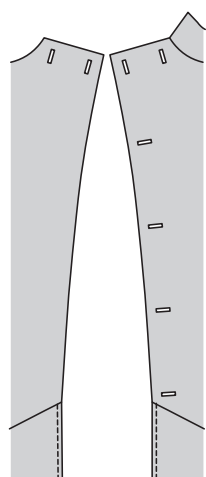


26. Pin pressed edge of lining over seam. **SLIPSTITCH** in place.

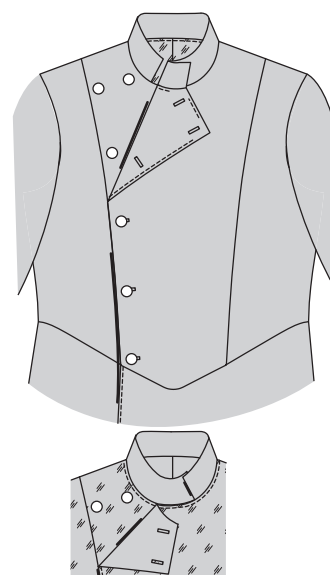


FINISHING

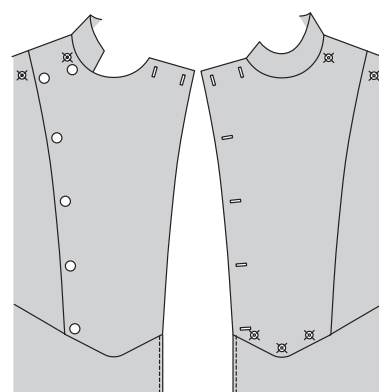
27. Make buttonholes in LEFT front at markings, and two buttonholes on RIGHT front extension.



28. Lap LEFT front over RIGHT, matching centers. Sew buttons to RIGHT front and side front under buttonholes. On INSIDE, sew buttons to LEFT front and side front under buttonholes on RIGHT front extension. If you prefer, sew a small set of snaps or hook and eye to upper corner of collar.

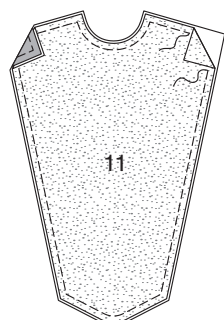


29. FOR FRONT PANEL – Sew two socket sections of snaps to LEFT front and side front at upper small dots, and three socket sections to LEFT front at lower small dots. Sew two socket sections of snaps to RIGHT front and side front at upper small dots.

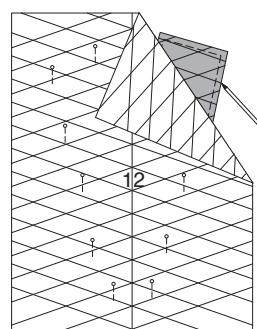


QUILTED FRONT PANEL A, B

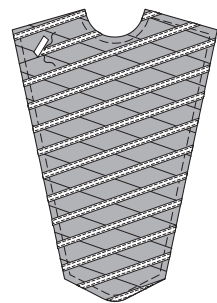
30. Pin fleece padding to WRONG side of one FRONT PANEL (11) section with raw edges even. Baste in place 1/2" (1.3cm) from raw edges.



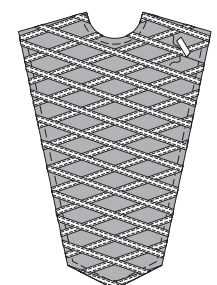
31. FOR VIEW A – Pin GUIDE FOR PLACEMNET (12) to OUTSIDE of padded front panel, matching centers. Transfer markings.



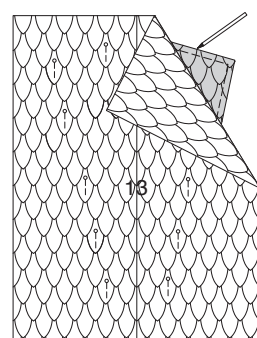
32. Pin 1/2" (1.3cm) twill tape or flat braid trim to panel with lower edge along one direction of placement lines. **EDGESTITCH** close to both long edges of trim. Cut trim even with raw edges of panel.



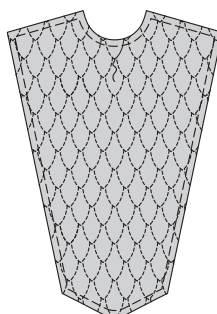
33. Pin trim to panel along placement lines in the opposite direction in the same manner. **EDGESTITCH** in place and cut ends even with panel.



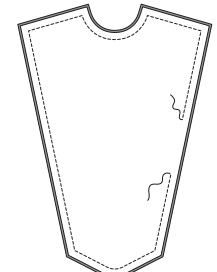
34. FOR VIEW B – Pin GUIDE FOR QUILTING (13) to OUTSIDE of padded front panel, matching centers. Transfer markings with chalk, soap, or washable fabric pen.



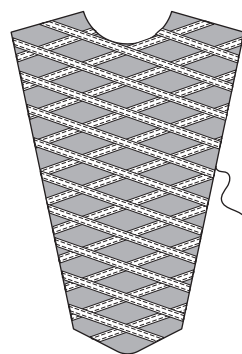
35. On OUTSIDE, stitch along markings, using a basting stitch or decorative stitch as you prefer.



36. FOR BOTH VIEWS – With RIGHT sides together and raw edges even, pin front panel facing to front panel. Stitch along seamline, leaving an opening for turning. **TRIM SEAM.**



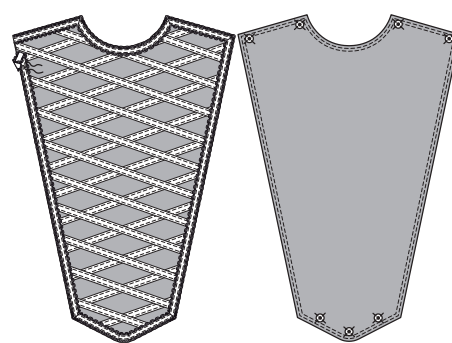
37. Turn facing to INSIDE; press. **SLIPSTITCH** opening closed.



38. Cut a piece of gimp braid the length of the outer edge of the panel, plus 1" (2.5cm). On OUTSIDE, pin braid to panel with outer edge of braid even with finished edge of panel, beginning at one corner where neck and shoulder edges meet, folding in fullness at remaining corners. Fold under trim diagonally, and lap where ends meet. Stitch close to both long edges of trim.

Sew seven knob sections of snaps to facing side of panel at small dots.

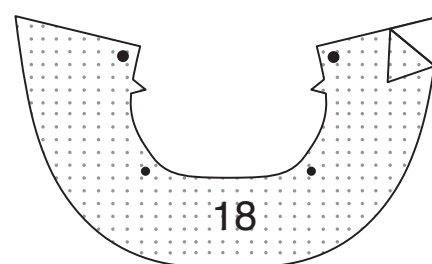
Snap panel in place over garment when wearing, as shown on envelope.



CAPE C

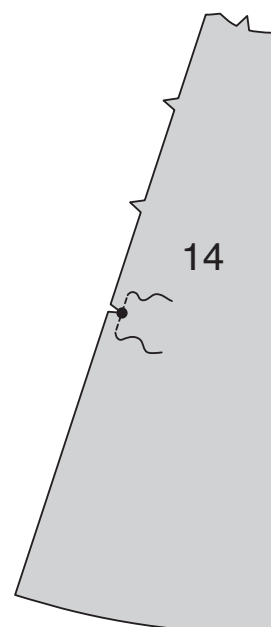
INTERFACING

1. Pin interfacing to WRONG side of COLLAR (18). Fuse interfacing in place following manufacturer's directions.

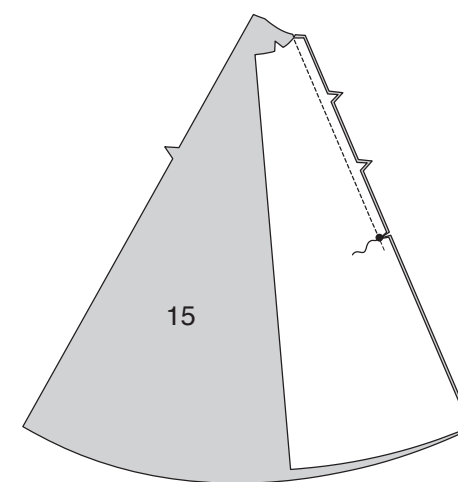


FRONT AND BACK

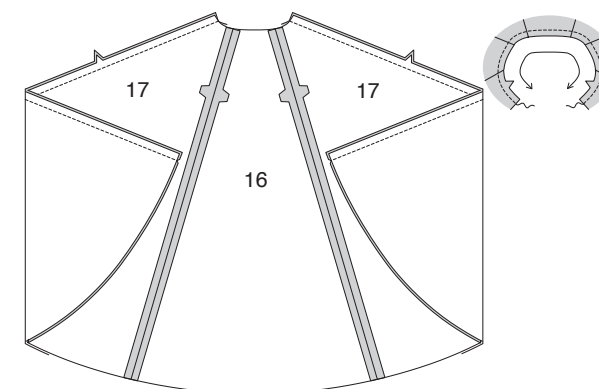
2. To reinforce side front edge of FRONT (14) at lower large dot, stitch along seam line for about 1" (2.5cm) each side of large dot, stitching through dots, as shown. Clip to stitching at dots.



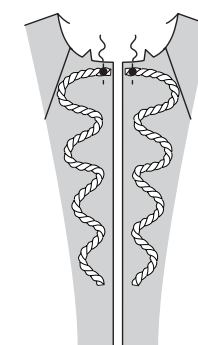
3. Reinforce and clip side front edge of SIDE FRONT (15) in the same manner as front. With RIGHT sides together and raw edges even, pin front to side front along side front edges, matching large dots and notches. Stitch from neck edge to large dot, back-stitching at dot to reinforce the seam.



4. With RIGHT sides together and raw edges even, pin BACK (16) to SIDE BACK (17), matching notches. Stitch. **STAYSTITCH** neck edge in the direction of the arrows.

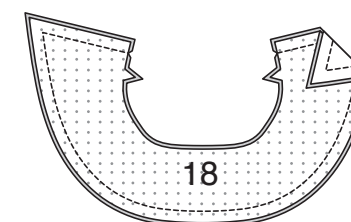


5. Cut two pieces of cord 24" (61cm) long. On OUTSIDE, pin one end of each piece to front edge of front at the large dot. Baste in place along front seamline.

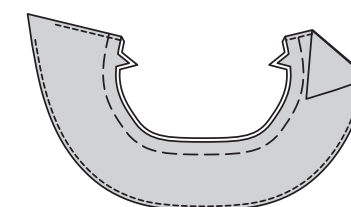


COLLAR

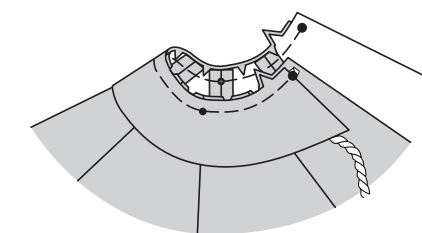
6. With RIGHT sides together and raw edges even, pin COLLAR (18) to collar facing. Stitch along unnotched edge and end. **TRIM SEAM.**



7. **UNDERSTITCH** upper edge of collar facing as far as possible. Turn collar; press. Baste raw edges together.

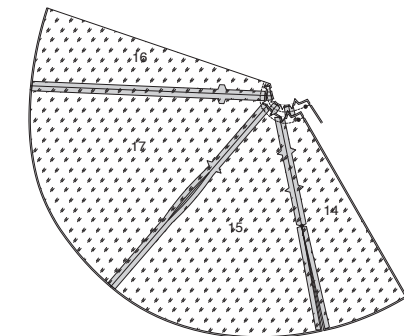


8. Clip neck edge of cape to staystitching. On OUTSIDE, pin collar to neck edge, matching centers, large dots, and notches, placing small dot at side seam. Baste. Do not trim seam.

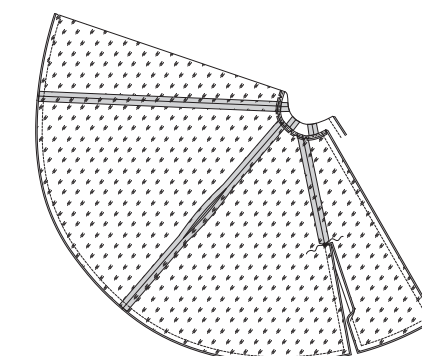


LINING

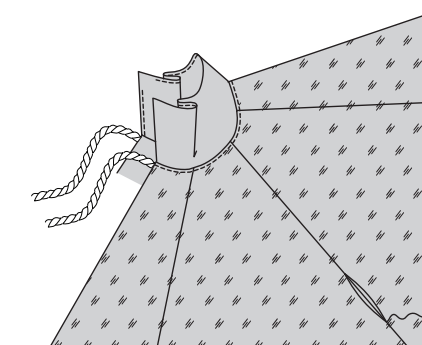
9. Reinforce, clip, staystitch, and stitch cape lining sections together in the same manner as cape, leaving an opening in one side seam for turning. With RIGHT sides together and raw edges even pin lining to cape (over collar and cord), matching large dots. Stitch neck edge. **TRIM SEAM.**



10. **UNDERSTITCH** the neck edge. Stitch lining to cape along front, lower, and side front edges, breaking stitching at inner large dots. **TRIM SEAM.**



11. Turn lining to INSIDE through opening in side seam; press, pressing out collar and cord. On INSIDE, **SLIPSTITCH** opening closed.



TRIM

12. On OUTSIDE, pin outer edge of 1/2" (1.3cm) flexible braid to finished edges of cape, turning under ends at front neck seam, and folding in fullness at corners. Stitch in place through center of trim. Tie cape at front or side when wearing, as shown on envelope.

