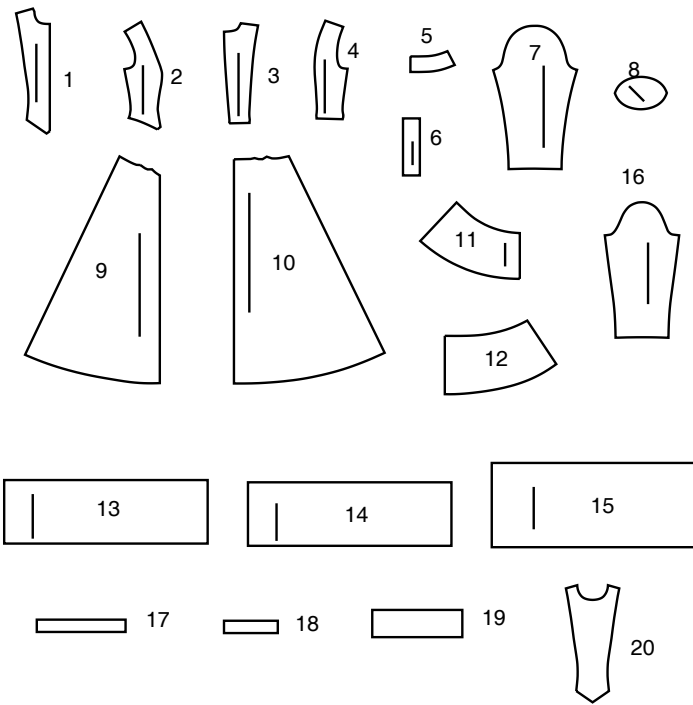


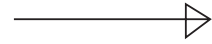
20 PATTERN PIECES



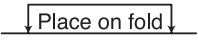
- 1 BODICE FRONT - A,B
2 BODICE SIDE FRONT - A,B
3 BODICE BACK - A,B
4 BODICE SIDE BACK - A,B
5 COLLAR - A
6 UNDERLAP - A,B
7 SLEEVE - A
8 SLEEVE HEADING - A
9 SKIRT FRONT - A,B
10 SKIRT BACK - A,B
11 FRONT TIER 1-A,B
12 BACK TIER 1-A,B
13 TIER 2-A,B
14 TIER 3-A,B
15 TIER 4-A,B
16 SLEEVE - B
17 NECKBAND - B
18 UPPER RUFFLE - B (NECKBAND)
19 LOWER RUFFLE - B (NECKBAND)
20 GUIDE FOR PLACEMENT - B

Sizes	6	8	10	12	14	16	18	20	22	24
FINISHED GARMENT MEASUREMENTS (Includes Design and Wearing Ease)										
A,B Bust	34	35	36	37½	39½	41½	43½	45½	47½	49½ Ins.
A,B Waist	24½	25½	26½	28	30	32	34	36	38	40 "
Finished back length from base of neck										
Costume A,B	57½	57¾	58	58¼	58½	58¾	59	59¼	59½	59¾ Ins.

PATTERN MARKINGS



GRAINLINE: Place on straight grain of fabric, parallel to selvage or fold.



FOLDLINE: Place line on fold of fabric.



BUTTONHOLE MARKING: Indicates exact length and placement of buttonholes.



BUTTON MARKING: Indicates button placement.



NOTCHES AND SYMBOLS: For matching seams and construction details.



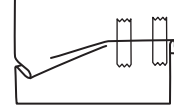
Indicates the Bustline, Waistline, Hip and/or Biceps. Measurements refer to circumference of Finished Garment (Body Measurement + Wearing Ease + Design Ease). Adjust pattern if necessary. The measurement excludes pleats, tucks, darts and seam allowances.

SEAM ALLOWANCE: 5/8" (1.5cm) included unless otherwise indicated, but not printed on tissue.

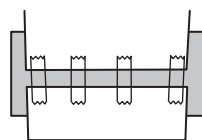
ADJUST IF NECESSARY

Lengthen or Shorten at adjustment lines (==) or where indicated on pattern. If substantial length is added, you may need to purchase additional fabric.

TO SHORTEN: Crease along adjustment line. Make a fold half the amount needed. Tape in place.



TO LENGTHEN: Slash between adjustment lines. Spread amount as needed, keeping edges parallel. Tape over paper.



When Alteration lines are not on tissue, lengthen or shorten at lower edge.

CUTTING AND MARKING

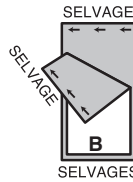
SHRINK FABRIC if not labeled pre-shrunk. Press.

CIRCLE LAYOUT for View, Size, Fabric Width.

Use **WITH NAP** layout for fabrics with one-way designs, nap, pile or surface shading. Because most knits have surface shading, a with nap layout is used.

For **DOUBLE THICKNESS (WITH FOLD)** - fold fabric with right sides together.

*** DOUBLE THICKNESS (WITHOUT FOLD)** - For fabrics with nap, fold fabric crosswise, right sides together. Mark as shown. Cut along crosswise fold of fabric (A). Turn upper layer 180° so arrows go in same direction and place over lower layer, right sides together (B).



For **SINGLE THICKNESS** - place fabric right side up. (For Fur Pile fabrics, place pile side down.)

★ Cut other pieces first, allowing enough fabric to cut this piece. Open fabric. For "Cut 1" pieces, cut piece once on single layer of fabric with piece face up on right side of fabric.

Pattern may have cutting lines for several sizes. Select the proper cutting line or pattern pieces for your size.

Before **CUTTING** place all pieces on fabric according to layout. Pin. (**Layouts show approximate position of pattern pieces; position may vary according to your pattern size.**) Cut **ACCURATELY**, cutting notches outward.

Before removing pattern, **TRANSFER MARKINGS** and lines of construction to Wrong Side of fabric, using the Pin and Chalk Pencil method or Tracing Paper and Dressmaker Wheel. Markings needed on right side of fabric should be thread traced.

NOTE: Broken-line boxes (a! b! c!) in layouts represent pieces cut by measurements provided.

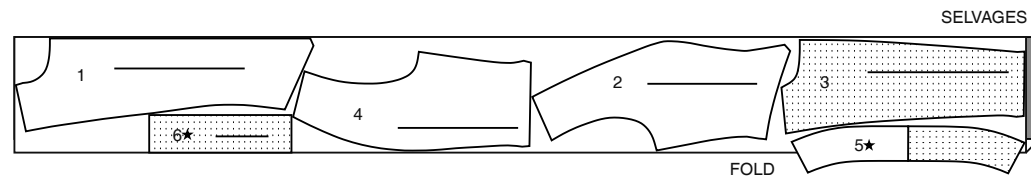
CUTTING LAYOUTS

INTERFACING A,B

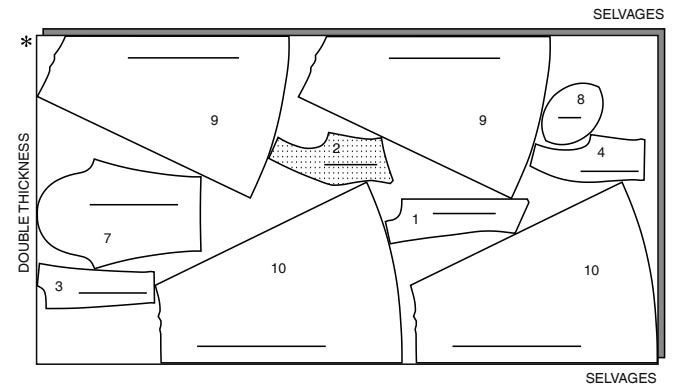
A- USE PIECES 1 2 3 4 5 6

B- USE PIECES 1 2 3 4 6

20" (51CM)
ALL SIZES



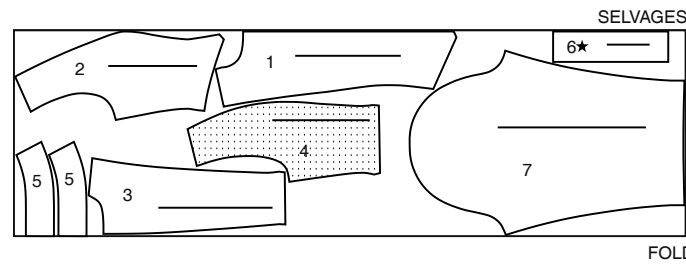
60" (150CM)
WITH NAP
SIZES 18 20 22 24



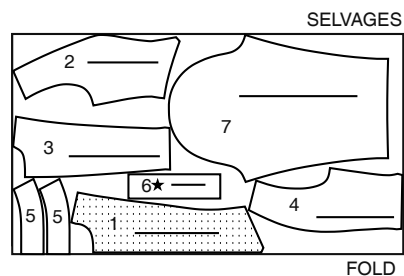
COSTUME A (BODICE, SLEEVES AND COLLAR)

USE PIECES 1 2 3 4 5 6 7

45" (115CM)
WITH NAP
ALL SIZES



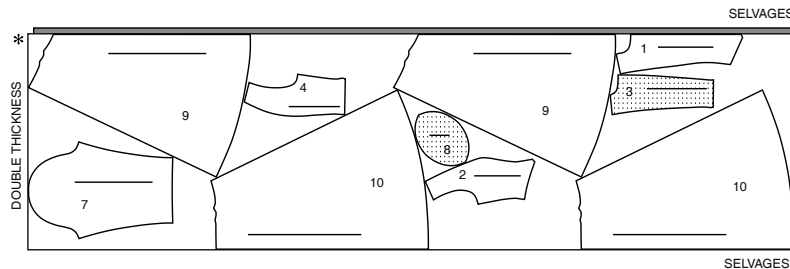
60" (150CM)
WITH NAP
ALL SIZES



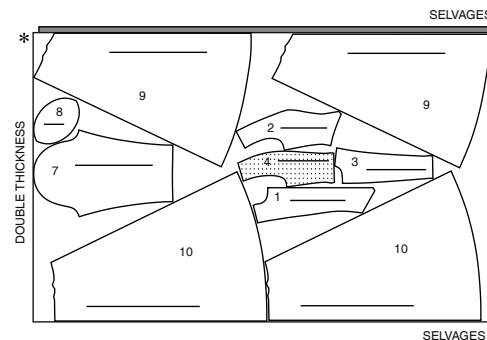
CONTRAST 1 (BODICE LINING, SKIRT)

USE PIECES 1 2 3 4 7 8 9 10

45" (115CM)
WITH NAP
ALL SIZES



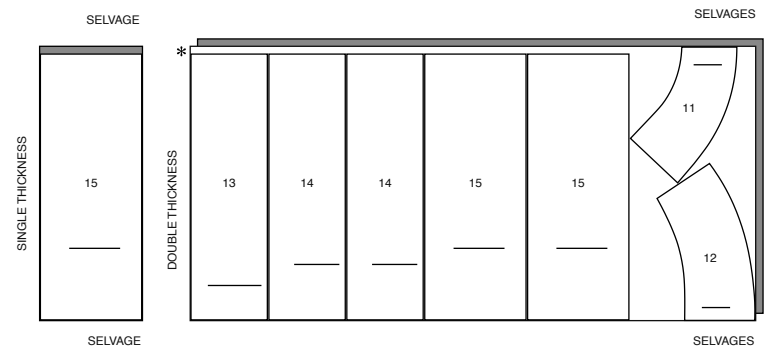
60" (150CM)
WITH NAP
SIZES 6 8 10 12 14 16



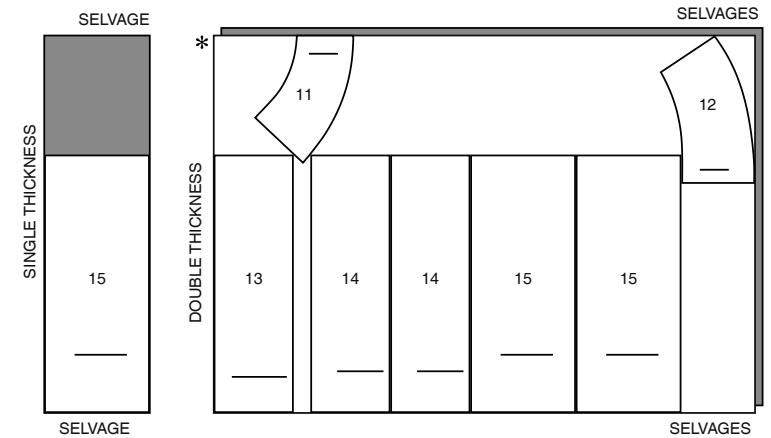
CONTRAST 2 (SKIRT RUFFLES)

USE PIECES 11 12 13 14 15

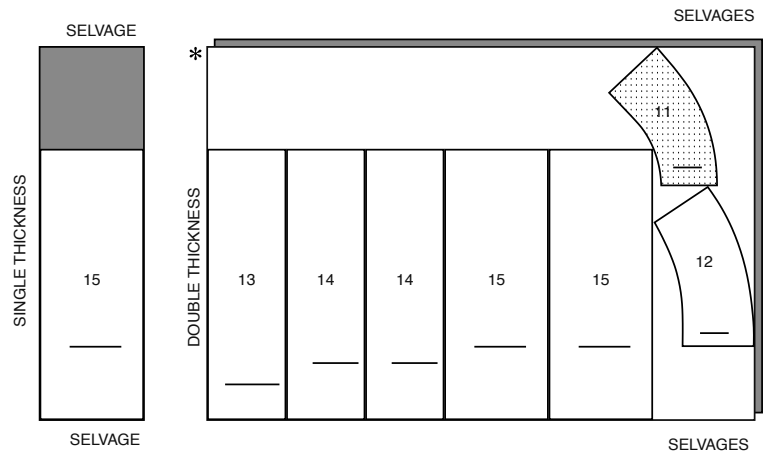
45" (115CM)
WITH NAP
ALL SIZES



60" (150CM)
WITH NAP
SIZES 6 8 10 12 14

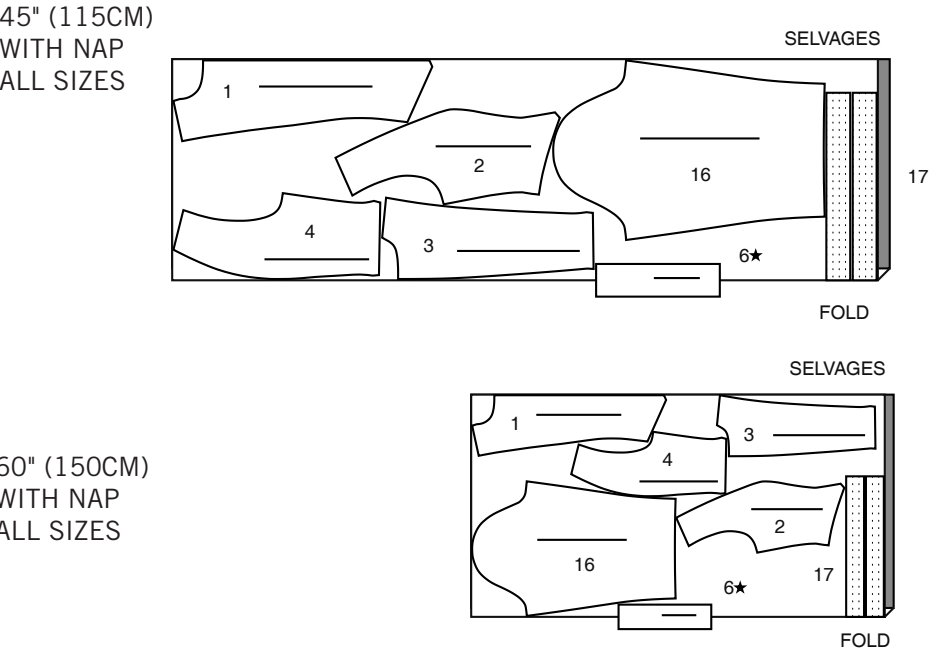


60" (150CM)
WITH NAP
SIZES 16 18 20 22 24



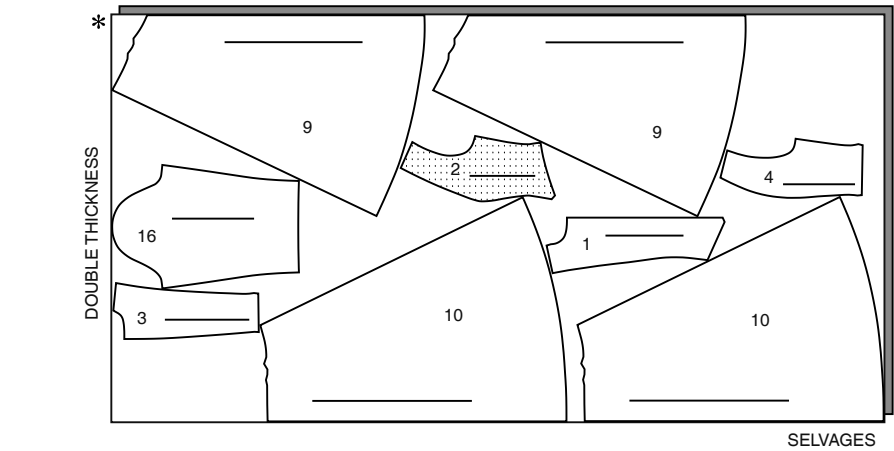
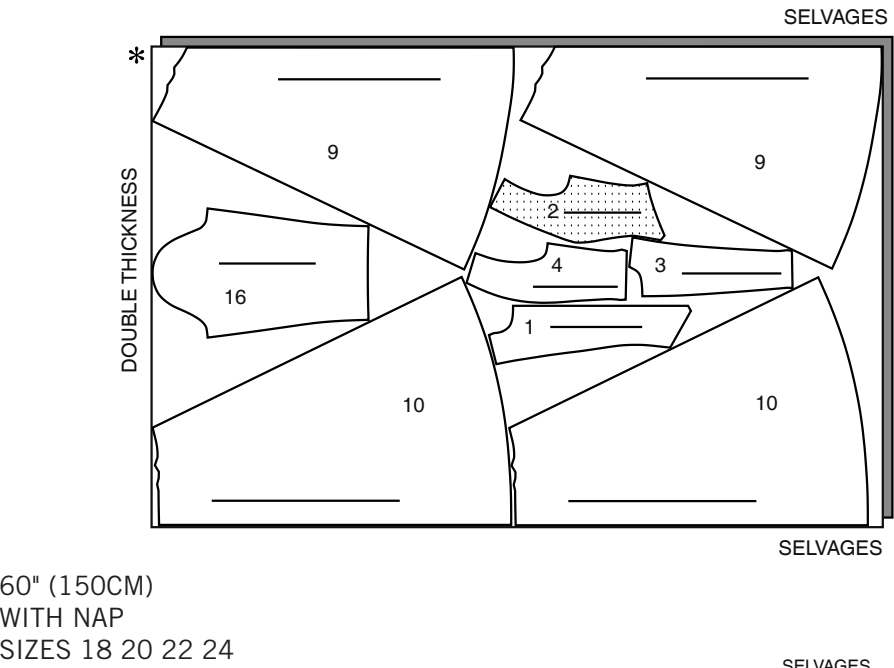
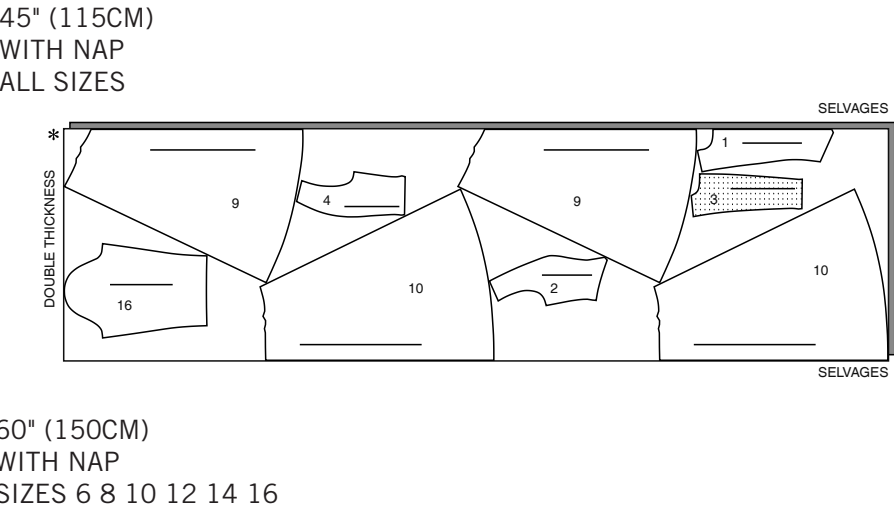
COSTUME B (BODICE, SLEEVES AND NECKBAND)

USE PIECES 1 2 3 4 6 16 17



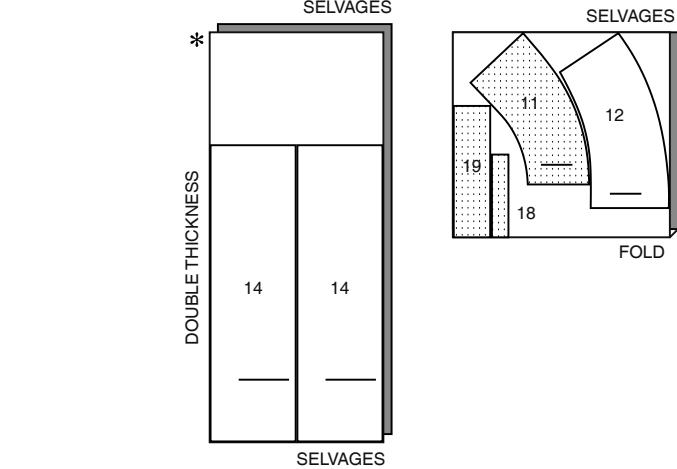
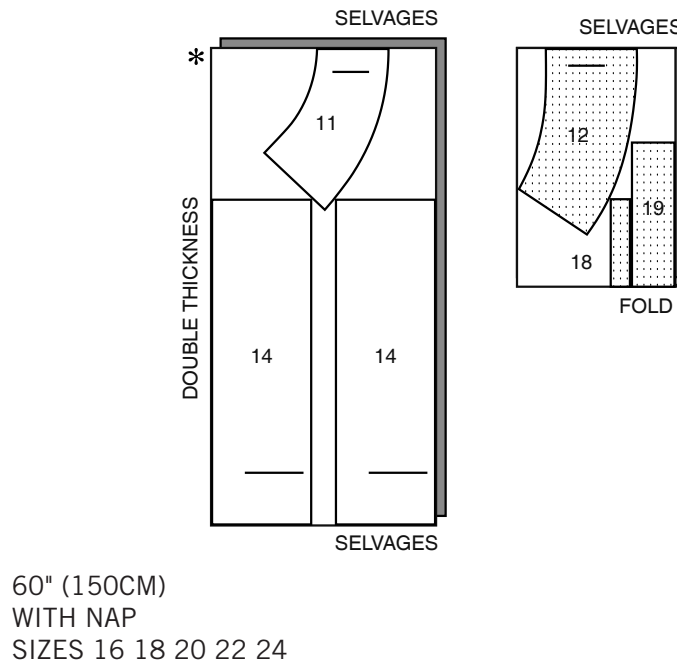
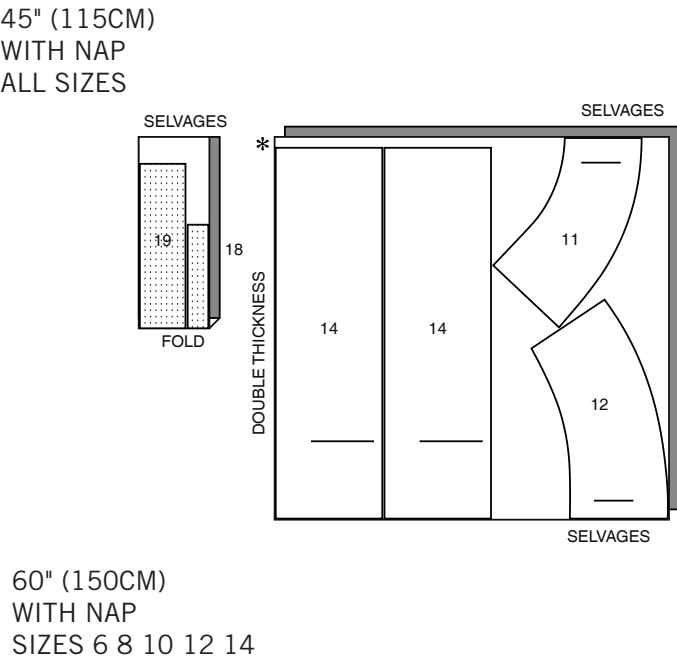
CONTRAST 1 (BODICE LINING, SKIRT)

USE PIECES 1 2 3 4 9 10 16



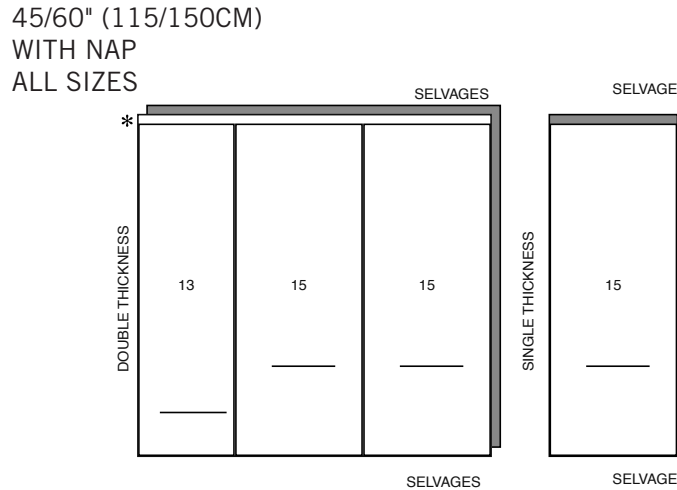
CONTRAST 2 (SKIRT RUFFLE TIERS 1 & 3, NECKBAND RUFFLES)

USE PIECES 11 12 14 18 19



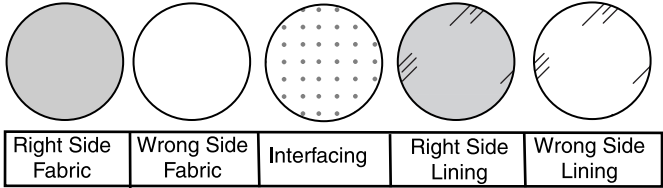
CONTRAST 3 (SKIRT RUFFLE TIERS 2 & 4)

USE PIECES 13 15



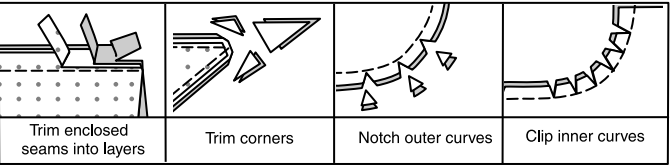
SEWING INFORMATION

FABRIC KEY



SEAM ALLOWANCES

Use 5/8" (1.5cm) seam allowances unless otherwise indicated.



PIN AND FIT

Pin or baste seams, **RIGHT SIDE TOGETHER**, matching notches. Fit garment before stitching major seams.

PRESS

Press seam allowances flat; then open unless otherwise stated. Clip where necessary so they lie flat.

GLOSSARY

Sewing methods in **BOLD TYPE** have Sewing Tutorial Video available. Scan QR CODE to watch videos:

EDGESTITCH – See Machine Stitches: “how to sew an edgestitch” video.

FLAT DART – See Darts: “sewing flat dart” video.

GATHER – See Gathering: “sewing two row gathers” video.

NARROW HEM – See Hems: “sewing narrow hems” video.

SET IN SLEEVE – See Armholes/Sleeves: “sewing a set in sleeve” video.

SLIPSTITCH – See Hand Stitching: “how to slip stitch” video.

STAYSTITCH – See Machine Stitches: “how to do stay stitching” video.

TRIM SEAM – See Seams: “how to trim, clip and layer seams” video.

UNDERSTITCH – See Machine Stitches: “how to understitch” video.

Sewing terms appearing in **BOLD TYPE** in Sewing Instructions are explained below.

EASESTITCH-Stitch along seamline, using long machine stitches. Pull thread ends when adjusting to fit.

NOTE: For sleeve caps, make a second row of long machine stitches 1/4” (6mm) away in seam allowance. for more control

SEWING TUTORIALS



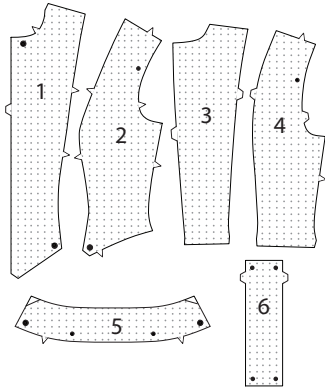
Build your skills viewing short, easy-to-follow videos at [simplicity.com/sewingtutorials](https://www.simplicity.com/sewingtutorials)

COSTUME A, B

NOTE: Under each sub-heading, View A will be shown unless otherwise indicated.

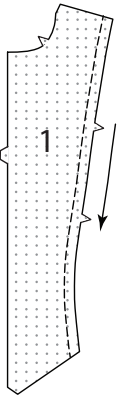
INTERFACING

1. Pin **INTERFACING** to wrong side of each matching **FABRIC** section. Fuse, following manufacturer's instructions. Trim corners of interfacing as shown.

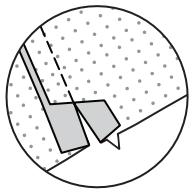
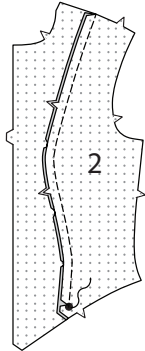


BODICE FRONT AND BACK

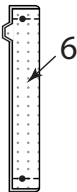
2. STAYSTITCH side edges of **BODICE FRONT** (1) sections in direction of arrows.



3. With **RIGHT** sides together, pin **BODICE SIDE FRONT** (2) to side edge of bodice front sections, matching notches. Clip to stay-stitching as necessary. Baste. Stitch ending at lower large dot. Back-stitch at dot to reinforce seam. Press seam toward front. Clip only the side front seam allowance at large dot. Press seam open below clip, as shown.



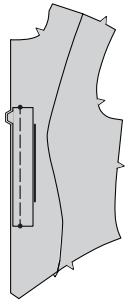
4. Fold **UNDERLAP** (6) in half lengthwise, with **RIGHT** sides together. Stitch ends.



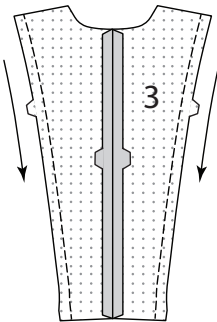
5. Turn underlap **RIGHT** side out. Press. Baste raw edges together.



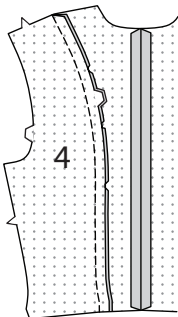
6. On OUTSIDE, pin underlap to LEFT front, matching notches and small dots. Baste.



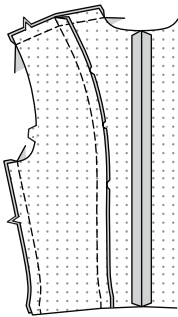
7. With RIGHT sides together, stitch center back seam of BODICE BACK (3) sections. **STAYSTITCH** side edges of bodice back in direction of arrows.



8. With RIGHT sides together, pin BODICE SIDE BACK (4) to side edge of bodice back sections, matching notches. Clip to stay-stitching as necessary. Baste. Stitch. Press seam toward back.

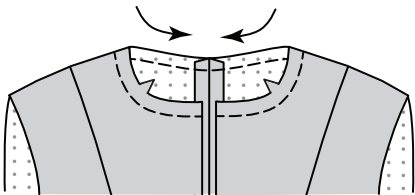


9. With RIGHT sides together, stitch front to back at shoulders and sides.

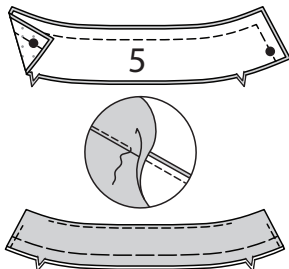


COLLAR A

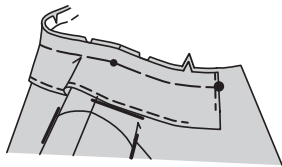
10. **STAYSTITCH** neck edge of bodice in direction of arrows.



11. With RIGHT sides together, pin COLLAR (5) sections together, having raw edges even. Stitch outer edge, leaving notched edge open. **TRIM SEAM** and corners. **UNDERSTITCH** collar facing. Turn collar RIGHT side out. Press. Baste raw edges together.

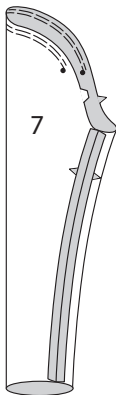


12. With under-stitching facing up, pin collar to neck edge matching large dots, placing small dots at shoulder seam, clipping to stay-stitching as necessary. Baste.

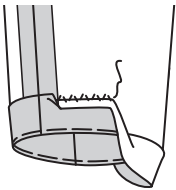


SLEEVES

13. **VIEW A-** **GATHER** upper edge of SLEEVE (7) between outer small dots. Stitch underarm seam.

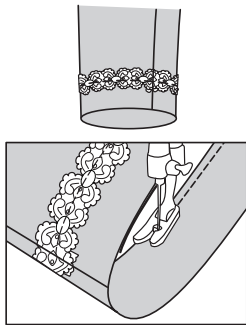


14. Turn up sleeve hem. Baste close to fold. Sew hem in place. Press.

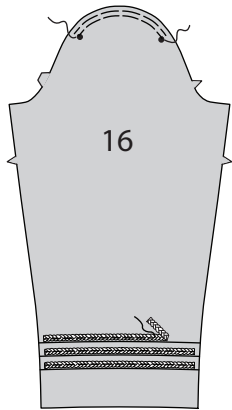


15. Cut two pieces of trim the length of lower edge of sleeve, plus 1/2"(1.3cm). On OUTSIDE, pin trim to lower edge of sleeve, 1-1/4"(3.2cm) above seam allowance. Turn under and lap ends of trim at underarm seam. Stitch along center of trim to secure.

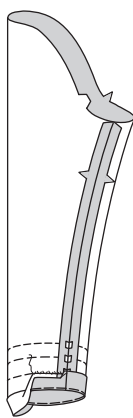
NOTE: It's easier to stitch lower edge of sleeve in a circle if you keep the RIGHT side of the sleeve against the machine, with the INSIDE facing you and the needle INSIDE the circle, as shown.



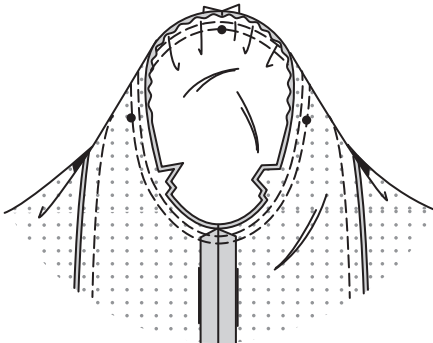
16. **VIEW B-** **EASESTITCH** upper edge of SLEEVE (18) between outer small dots. Cut three pieces of trim for each sleeve, the length of placement lines, plus 1/2"(1.3cm). On OUTSIDE, pin lower edge of trim along placement line, having ends extend 1/4"(6mm) beyond each seam allowance.. Stitch along center of trim.



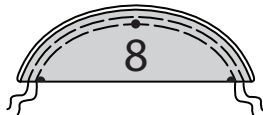
17. Stitch underarm seam of sleeve. Turn up sleeve hem. Baste close to fold. Sew hem in place. Press.



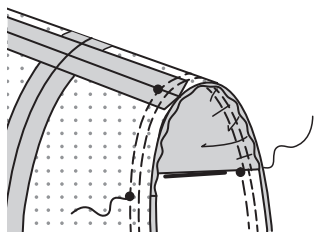
18. **VIEW A, B-** To **SET IN SLEEVE**, turn sleeve RIGHT side out. Hold garment WRONG side out with armhole toward you. With RIGHT sides together, pin sleeve to armhole edge with center small dot at shoulder seam, matching underarm seams, notches and remaining small dots. Pull up gathering/ease stitches to fit. To distribute fullness evenly, slide fabric along bobbin threads until there are no puckers or tucks on the seam line. Baste. Stitch. Stitch again 1/8" (3mm) from first stitching. Trim seam below notches close to stitching. Press only the seam allowance, shrinking out fullness.



19. **VIEW A-** Fold SLEEVE HEADING (8) in half lengthwise, with WRONG sides together. **GATHER** raw edges together.



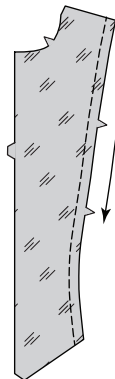
20. Pin heading to armhole on the INSIDE of sleeve, placing the center of heading at center small dot, having raw edges even. Adjust gathers to fit. Baste. Stitch 1/2" (1.3cm) from the bodice side (not the sleeve side).



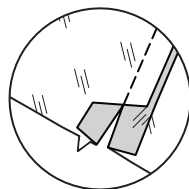
CONTRAST LINING

NOTE: Contrast lining will be shown as lining in illustrations. Cut sleeve contrast lining sections 1"(2.5cm) shorter.

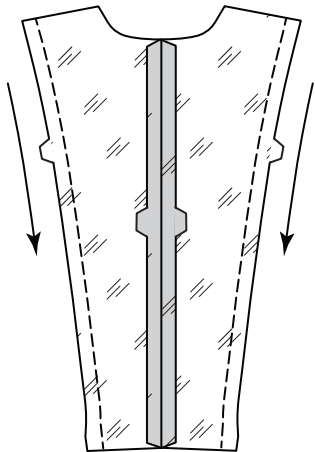
21. **STAYSTITCH** side edges of bodice front contrast lining sections in direction of arrows.



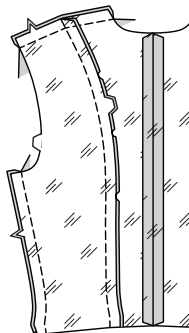
22. With RIGHT sides together, pin bodice side front to side edge of bodice front sections, matching notches. Clip to stay-stitching as necessary. Baste. Stitch ending at lower large dot. Back-stitch at dot to reinforce seam. Press seam toward front. Clip only the side front seam allowance at large dot. Press seam open below clip, as shown.



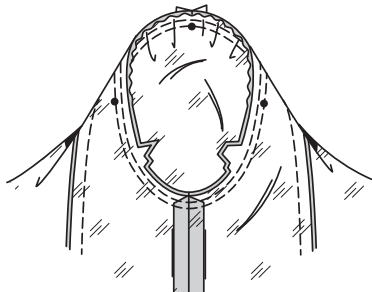
23. With RIGHT sides together, stitch center back seam of bodice back sections. **STAYSTITCH** side edges of bodice back in direction of arrows.



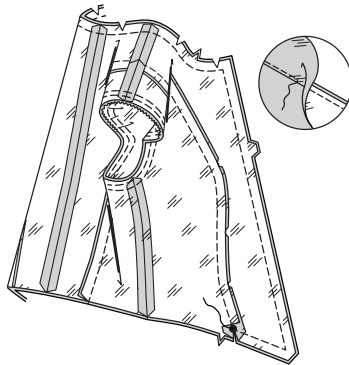
24. With RIGHT sides together, pin bodice side back to side edge of bodice back sections, matching notches. Clip to stay-stitching as necessary. Baste. Stitch. Press seam toward back. With RIGHT sides together, stitch front to back at shoulders and sides.



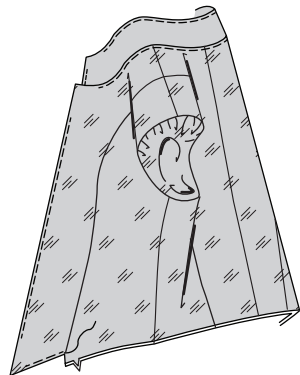
25. Prepare sleeve LINING in same manner as sleeve, disregarding trim and hem. To **SET IN SLEEVE**, turn sleeve RIGHT side out. Hold garment WRONG side out with armhole toward you. With RIGHT sides together, pin sleeve to armhole edge with center small dot at shoulder seam, matching underarm seams, notches and remaining small dots. Pull up gather/ease stitches to fit. To distribute fullness evenly, slide fabric along bobbin threads until there are no puckers or tucks on the seam line. Baste. Stitch. Stitch again 1/8" (3mm) from first stitching. Trim seam below notches close to stitching. Press only the seam allowance, shrinking out fullness.



26. With RIGHT sides together, stitch contrast lining to bodice front opening and neck edges. Stitch lower edge ending at large dot, as shown. **TRIM SEAM. UNDERSTITCH** lining as far as possible.

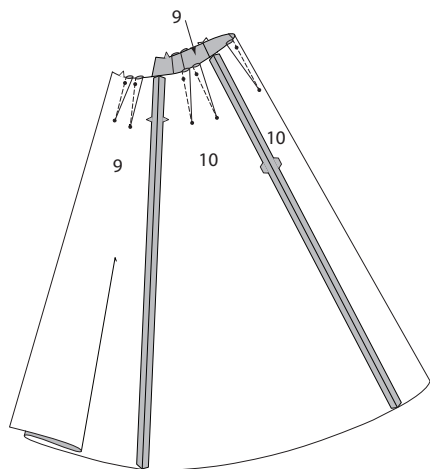


27. Turn facing and lining to inside; press.

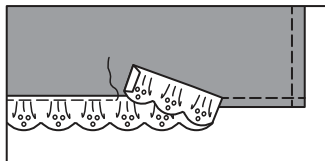
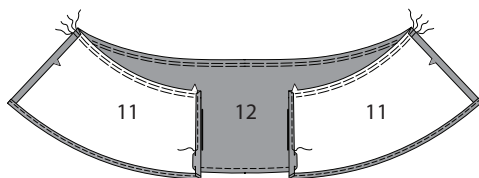


SKIRT

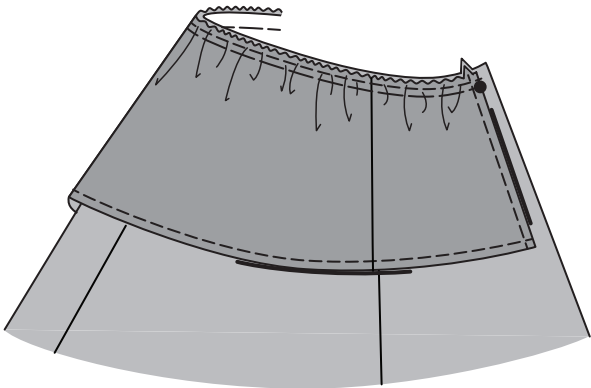
28. Make **FLAT DARTS** in two SKIRT FRONT (9) sections. Press darts toward side. Make **FLAT DARTS** in two SKIRT BACK (10) sections. Press darts toward back. With RIGHT sides together, stitch center back seam of skirt back sections. Stitch front to back at side seams.



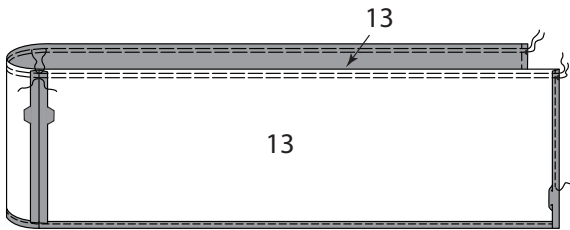
29. With RIGHT sides together, stitch FRONT TIER (11) to BACK TIER (12) at sides. **NARROW HEM** lower and front edges of tier. **GATHER** upper edge between front notches, breaking stitching at side seams. **VIEW B-** To add trim to lower edge of tier, cut a piece of trim the length of lower edge of tier plus 1/2"(1.3cm). On OUTSIDE, pin trim to lower edge of tier, placing upper long edge, just covering hem stitching. Turn under ends at center front. Stitch along upper edge of trim, connecting with previous stitching. **NOTE:** Trim will not be shown or referenced in following steps. For View B, apply trim to each following tier, in same manner as stated above.



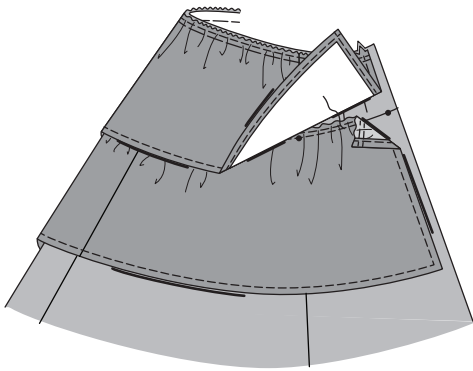
30. On OUTSIDE, pin WRONG side of tier 1, to RIGHT side of skirt front and back, having upper raw edges even, matching large dots and side seams. Adjust gathers to fit. Baste along seam line.



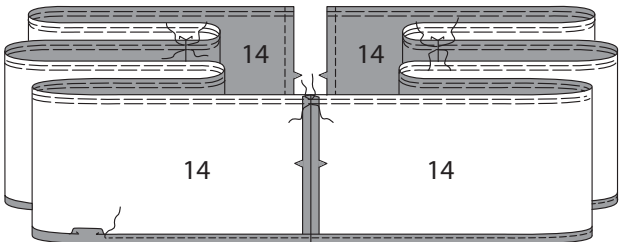
31. With RIGHT sides together, stitch TIER 2 (13) sections together at center back seam.
NARROW HEM lower and front edges of tier.
GATHER upper edge between small dots at front, breaking stitching at center back seam.



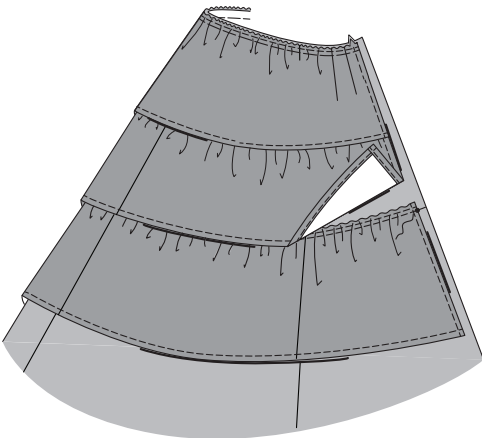
32. On OUTSIDE, pin WRONG side of tier 2, to RIGHT side of skirt front and back, placing lower gathering stitches along stitching line, matching small dots and center back seam, placing inner small dots at side seams. Adjust gathers to fit. Baste. Stitch along stitching line.



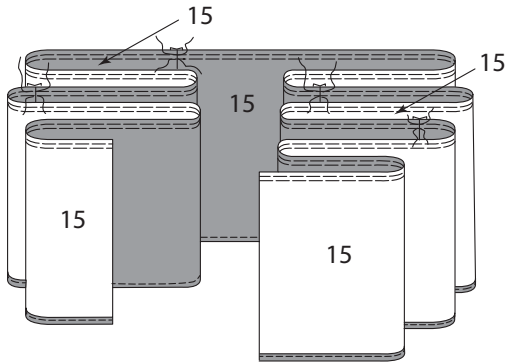
33. With RIGHT sides together, stitch ends of TIER 3 (14) sections together.
NARROW HEM lower and front edges of tier.
GATHER upper edge between small dots at front, breaking stitching at seams.



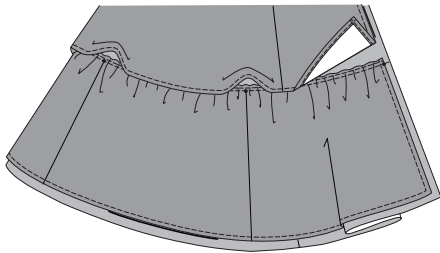
34. On OUTSIDE, pin WRONG side of tier 3, to RIGHT side of skirt front and back, placing lower gathering line along stitching line, matching small dots and center back and side seams. Adjust gathers to fit. Baste. Stitch along stitching line.



35. With RIGHT sides together, stitch ends of TIER 4 (15) sections together.
NARROW HEM lower and front edges of tier.
GATHER upper edge between small dots at front, breaking stitching at seams.

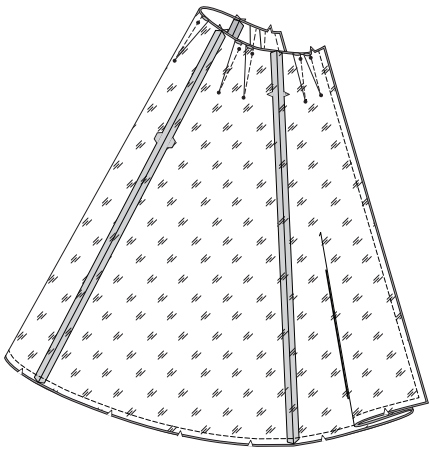


36. On OUTSIDE, pin WRONG side of tier, to RIGHT side of skirt front and back, placing lower gathering stitching along stitching line, matching small dots and placing tier seams at small dots. Adjust gathers to fit. Baste. Stitch along seam line.

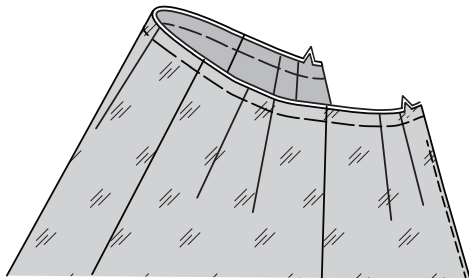


SKIRT CONTRAST LINING

37. Make **FLAT DARTS** in remaining skirt front and back lining sections. With RIGHT sides together, stitch front to back at side seams. With RIGHT sides together, pin skirt to lining having raw edges even. Stitch outer edge, leaving upper notched edge open, keeping tiers free. **TRIM SEAM**, clip curves.

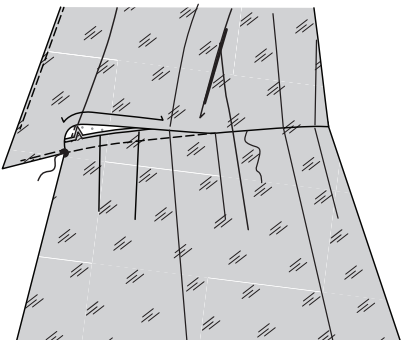


38. **UNDERSTITCH** skirt lining, as far as possible. Turn skirt lining to INSIDE. Press. Baste raw edges together.



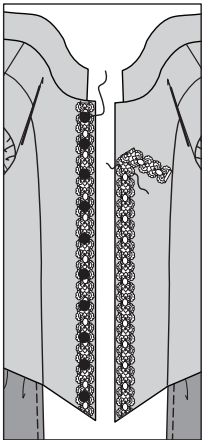
FINISHING

39. With RIGHT sides together, pin skirt to lower edge of bodice, matching large dots and side seams. Stitch. Press seam up, pressing skirt out. Press under seam allowance on lower edge of lining. **SLIPSTITCH** pressed edge of lining over seam.



40. Cut two pieces of trim the length of center front plus 1/2"(1.3cm). Turn under 1/4"(6mm) on ends of trim. On OUTSIDE, pin trim to each side of front, having long edge even with front edge. Stitch trim in place.

VIEW A- On OUTSIDE, hand sew buttons as shown on front of envelope or as desired.

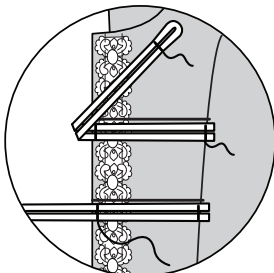
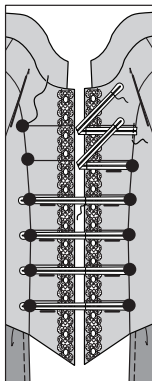


41. VIEW B- Using guide for placement (20), transfer placement lines to each side of center front.

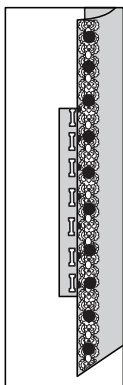
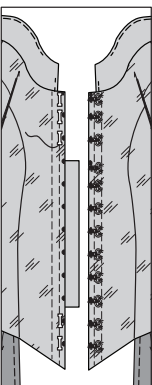
Cut six pieces of braid trim the length of each placement line doubled, plus 1/2"(1.3cm). Fold trim in half forming loop. Stich across folded end of loop allowing enough room for button to pass through.

On OUTSIDE, pin trim to LEFT side of front, having raw ends of loop at side front seam. Stitch ends in place, connecting with previous stitching. Stitch trim in place along front edge.

On OUTSIDE, hand sew buttons to each side of front, at each end of each trim, as shown.

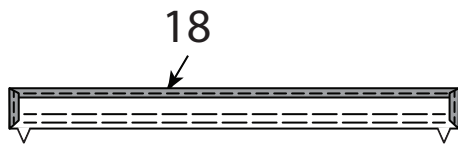


42. VIEW A, B- On INSIDE, sew hook and eyes to LEFT and RIGHT front at markings. For underlap, on OUTSIDE sew remaining hook and eyes to underlap at markings, placing hook and eye just below upper small dot on underlap, as shown.

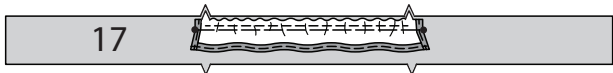


COLLAR B

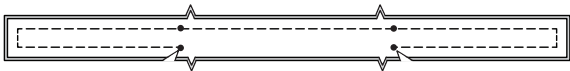
43. NARROW HEM unnotched edges of UPPER RUFFLE (18).
GATHER notched edge between notches.



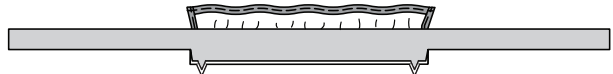
44. With RIGHT sides together, upper ruffle to NECK BAND (17) at upper edge, matching notches. Adjust gathers to fit. Baste.



45. With RIGHT sides together, pin facing to neck band (over ruffle) having raw edges even. Stitch outer edges, stitching lower edge to small dot. Backstitch at small dot to reinforce seam. Clip to small dots, being careful not to clip through stitching. Trim seam and corners.

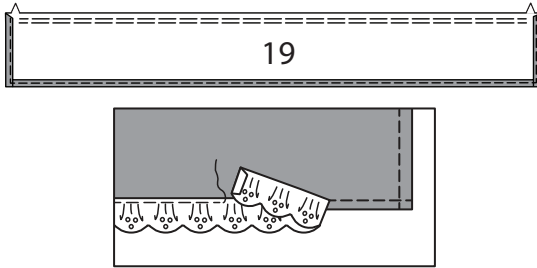


46. Turn neck band RIGHT side out. Press.



47. NARROW HEM unnotched edges of LOWER RUFFLE (19).
GATHER notched edge between notches.

Cut a piece of trim the length of lower edge of ruffle plus 1/2"(1.3cm). On OUTSIDE, pin trim to lower edge of ruffle, placing upper edge, just covering hem stitching. Turn under ends. Stitch along upper edge of trim, connecting with previous stitching.



48. With RIGHT sides together, pin lower ruffle to lower edge of neck band, matching small dots and notches. Adjust gathers to fit. Baste. Stitch. Press seam up.
SLIPSTITCH pressed edge of neck band over seam.

