

McCall's

VINTAGE PATTERN REPRODUCED
INCLUDES ADDITIONAL
SIZE OPTIONS
CUTTING ADVISORY
AUTHENTIC



VINTAGE
80's

LAURA ASHLEY
SINCE 1953

Designed and
printed in USA

Patterns and cutting layouts for sizes 16-24 available in PDF format at Simplicity.com
Les patrons et les plans de coupe pour les tailles 16 à 24 sont disponibles en format PDF sur Simplicity.com ou SewDirect.com

M8620

MISSES' BLOUSES

Suggested Fabrics: Batiste, Cotton, Cotton Blends, Crepe de Chine, Handkerchief Linen. **Views B,C** also in Chambray, Oxford Cloth. Not suitable for diagonals, stripes or plaids. **Interfacing:** Lightweight Fusible or non-fusible.

Notions: **Views A,B,C:** $\frac{3}{8}$ " (1cm) buttons: Sixteen for **A**, Fourteen for **B**, Eight for **C**. **Also for View A:** 4 yds. (3.7m) of $\frac{1}{2}$ " (3cm) double-edged flat lace, one hook. **Also for View C:** $1\frac{1}{2}$ yds. (1.1m) of $\frac{1}{8}$ " (1.5cm) ribbon.

Sizes	16	18	20	22	24
European	42	44	46	48	50

BODY MEASUREMENTS: Select pattern size based on body measurements

Bust	38	40	42	44	46	Ins.
Waist	30	32	34	37	39	"
Hip-9" below waist	40	42	44	46	48	"
Back-neck to waist	16 $\frac{1}{4}$	17	17 $\frac{3}{4}$	17 $\frac{1}{2}$	17 $\frac{3}{4}$	"

View A Blouse	45" ^{**}	3 $\frac{3}{8}$	3 $\frac{3}{8}$	3 $\frac{3}{8}$	3 $\frac{1}{2}$	3 $\frac{1}{2}$	Yds.
	60" ^{**}	2 $\frac{3}{8}$	2 $\frac{1}{2}$	2 $\frac{1}{2}$	2 $\frac{1}{2}$	2 $\frac{1}{2}$	"
Interfacing	20"	1	1	1	1 $\frac{1}{2}$	1 $\frac{1}{2}$	"

View B Blouse	45" ^{**}	2 $\frac{3}{8}$	2 $\frac{1}{2}$	2 $\frac{1}{2}$	2 $\frac{1}{2}$	2 $\frac{1}{2}$	Yds.
	60" ^{**}	1 $\frac{7}{8}$	2 $\frac{1}{8}$	2 $\frac{1}{8}$	2 $\frac{1}{4}$	2 $\frac{1}{4}$	"
Interfacing	20" - $\frac{7}{8}$ yd.						"

View C Blouse	45" ^{**}	3 $\frac{1}{4}$	3 $\frac{1}{4}$	3 $\frac{1}{4}$	3 $\frac{1}{4}$	3 $\frac{3}{8}$	Yds.
	60" ^{**}	2 $\frac{1}{4}$	2 $\frac{1}{4}$	2 $\frac{1}{4}$	2 $\frac{3}{8}$	2 $\frac{1}{2}$	"
Interfacing	20" - $\frac{3}{4}$ yd.						"

FINISHED GARMENT MEASUREMENTS (Includes Design and Wearing Ease)

View A Bust	51 $\frac{1}{2}$	53 $\frac{1}{2}$	55 $\frac{1}{2}$	57 $\frac{1}{2}$	59 $\frac{1}{2}$	Ins.
View B Bust	41 $\frac{1}{2}$	43 $\frac{1}{2}$	45 $\frac{1}{2}$	47 $\frac{1}{2}$	49 $\frac{1}{2}$	"
View C Bust	53 $\frac{1}{2}$	55 $\frac{1}{2}$	57 $\frac{1}{2}$	59 $\frac{1}{2}$	61 $\frac{1}{2}$	"
Width, lower edge						
View A Blouse	48	50	52	54	56	Ins.
View B Blouse	42 $\frac{3}{4}$	44 $\frac{3}{4}$	46 $\frac{3}{4}$	48 $\frac{3}{4}$	50 $\frac{3}{4}$	"
View C Blouse	53 $\frac{1}{2}$	55 $\frac{1}{2}$	57 $\frac{1}{2}$	59 $\frac{1}{2}$	61 $\frac{1}{2}$	"
Finished back length from base of neck						
View A,B,C Blouse	25	25 $\frac{1}{4}$	25 $\frac{1}{2}$	25 $\frac{3}{4}$	26	Ins.

*with nap **without nap

Average

CHEMISIERS POUR JEUNES FEMMES

Tissus Conseillés: Batiste, Coton, Cotonnades, Crêpe de chine, Toile de Lin très fine. **Modèles B,C** aussi en Chambray, Tissu oxford. Ne pas convenable pour les tissus en diagonale, à rayures, ou pour tissus écossais.

Entoilage: Thermocollant léger.

Mercerie: **Modèles A,B,C:** Boutons de 1cm: 16 pour **A**, 14 pour **B**, 8 pour **C**. **Aussi pour Modèle A:** 3.7m de dentelle plate double bord de 3cm, un crochet. **Aussi pour Modèle C:** 1.1m de ruban de 1.5cm.

Tailles	16	18	20	22	24
Françaises	44	46	48	50	52
Européen	42	44	46	48	50

MESURES DU CORPS: Choisissez la taille du patron basée sur les mesures du corps

Poitrine	97	102	107	112	117	cm
Taille	76	81	87	94	99	"
Hanches (23cm au-dessous de la taille)	102	107	112	117	122	cm
Dos du cou à la taille	42.5	43	44	44.5	45	"

Modèle A Chemisier	115cm*	3.1	3.1	3.1	3.2	3.2	m
	150cm*	2.2	2.2	2.3	2.3	2.3	"

Entoilage	51cm	0.9	0.9	0.9	1.0	1.0	"
-----------	------	-----	-----	-----	-----	-----	---

Modèle B Chemisier	115cm*	2.2	2.3	2.3	2.3	2.3	m
	150cm*	1.7	1.9	1.9	2.1	2.1	"

Entoilage	51cm - 0.8m						"
-----------	-------------	--	--	--	--	--	---

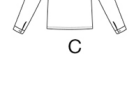
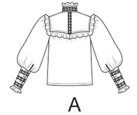
Modèle C Chemisier	115cm*	2.9	3.0	3.0	3.0	3.1	m
	150cm*	2.1	2.1	2.1	2.2	2.2	"

Entoilage	51cm - 0.7m						"
-----------	-------------	--	--	--	--	--	---

MESURES DES VÊTEMENTS FINI (Motif et aisance de port compris)

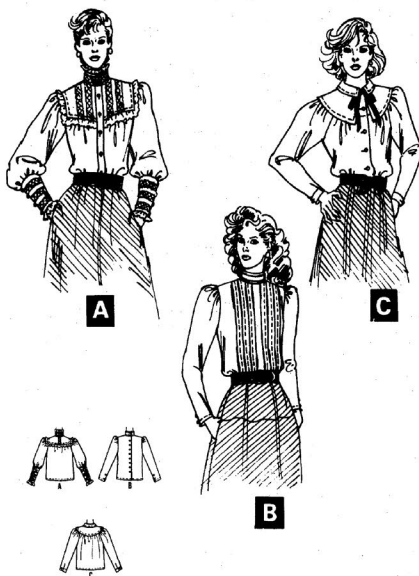
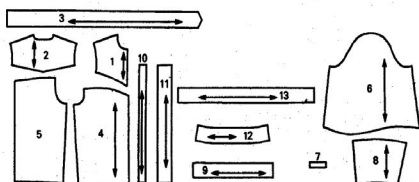
Modèle A Poitrine	131	136	141	146	151	cm
Modèle B Poitrine	105	110	116	121	126	"
Modèle C Poitrine	136	141	146	151	156	"
Largeur à l'ourlet						
Modèle A Chemisier	122	127	132	137	142	cm
Modèle B Chemisier	109	114	119	124	129	"
Modèle C Chemisier	136	141	146	151	156	"
Longueur finie - dos, votre nuque à l'ourlet						
Modèle A,B,C Chemisier	64	64	65	65	66	cm

*avec sens **sans sens

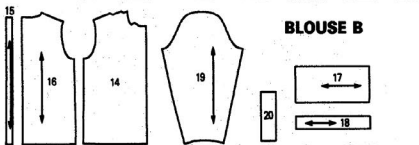


8699

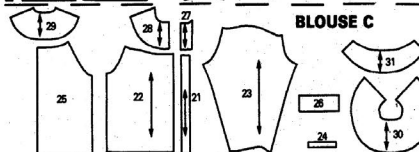
McCALL'S®

PATTERN PIECES
BLOUSE A

BLOUSE B



BLOUSE C



1. FRONT YOKE
2. BACK YOKE
3. RUFFLE
4. FRONT
5. BACK
6. SLEEVE
7. CONTINUOUS LAP
8. CUFF
9. SLEEVE RUFFLE
10. FRONT INTERFACING
11. FRONT BAND
12. COLLAR
13. NECK RUFFLE
14. FRONT
15. BACK INTERFACING
16. BACK
17. COLLAR
18. INTERFACING
19. SLEEVE
20. CONTINUOUS LAP
21. FRONT INTERFACING
22. FRONT
23. SLEEVE
24. CUFF
25. BACK
26. BACK INTERFACING
27. FRONT INTERFACING
28. FRONT YOKE
29. BACK YOKE
30. UNDER COLLAR
31. UPPER COLLAR

PATTERN MARKINGS

- GRAINLINE: Place on straight grain of fabric, an even distance from selvage.
FOLD LINE: Place on fold of fabric.
CUTTING LINE: For cutting.
SEAM LINE: For stitching.
SEAM ALLOWANCE: Distance between cutting and seam lines, usually 5/8" (1.5cm).
NOTCHES AND CIRCLES: For matching pattern pieces.

ADJUST IF NECESSARY

A pattern is made to fit body measurements, with extra ease for comfort and style.
Adjust pieces before placing on fabric. Adjust back waist and finished garment lengths using
McCALL'S EASY-RULE®
TO SHORTEN: Crease on Easy-Rule Guide. Fold necessary amount. Tape in place.
TO LENGTHEN: Cut on dotted lines of Easy-Rule Guide. Spread necessary amount. Tape over paper.
See McCall's How To Fit book for other adjustments.

CUTTING AND MARKING

SHRINK FABRIC not labeled pre-shrunk. Press.
CIRCLE LAYOUT for View, Size, Fabric Width.
Use WITH NAP layout for fabrics with one-way designs, nap, pile or surface shading.
For DOUBLE THICKNESS - fold fabric with Right Sides Together.
For SINGLE THICKNESS - place fabric Right Side Up.
Before CUTTING place all pieces on fabric according to layout. Overlap margins. Pin.
Cut ACCURATELY through fabric and pattern on cutting line. Cut notches outward.
BEFORE REMOVING PATTERN, transfer markings to Wrong Side of fabric. Two ways which may be used quickly are the Pin and Chalk Pencil method or Tracing Paper and Dressmaker Wheel.

CUTTING LAYOUTS

Black area denotes fabric.

Pattern pieces to be placed with printed side up.

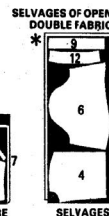
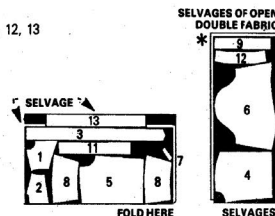
Pattern pieces to be placed with printed side down.

* IMPORTANT: For layouts marked "Open Double Fabric," cut two pieces of fabric; place one layer over the other, Right Sides Together, so nap runs in one direction.

A BLOUSE

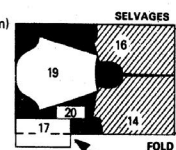
use pieces 1 thru 9, 11, 12, 13

44" 45" (115cm)
fabric
with nap
or
without nap
all sizes



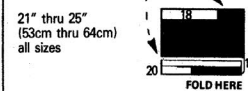
B - continued

58" 60" (150cm)
fabric
with nap
all sizes



OPEN FABRIC TO CUT WITH FABRIC RIGHT SIDE UP

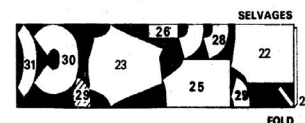
Interfacing
use pieces 15, 18, 20



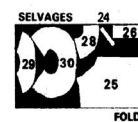
C BLOUSE

use pieces 22 thru 26; 28 thru 31

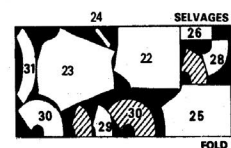
44" 45" (115cm)
fabric
with nap
sizes 6 - 8 - 10



sizes 12-14



58" 60" (150cm)
fabric
with nap
all sizes



Interfacing
use pieces 21, 26, 27, 31



8699 - PAGE 1

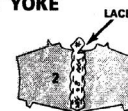
SEWING DIRECTIONS

NOTE: If FUSIBLE interfacing is used, follow manufacturer's directions.

BLOUSE - A

1. BACK AND FRONT YOKE

With RIGHT SIDES UP, pin lace between lines indicated on BACK YOKE (2). Cut lace according to shape of back at each end. Stitch close to long edges of lace.



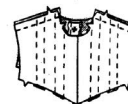
If trimming away of fabric is desired, carefully cut away fabric under lace to 3/8" (1cm) from stitching. Press remaining seam allowances away from lace.



With RIGHT SIDES UP, pin lace between lines indicated on FRONT YOKE (1). Handle lace in same manner as on back yoke.



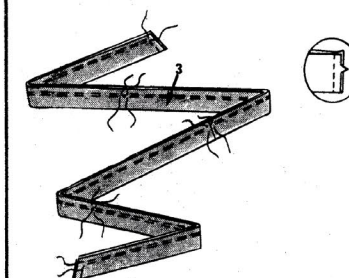
Stitch front yoke to back yoke at shoulders.

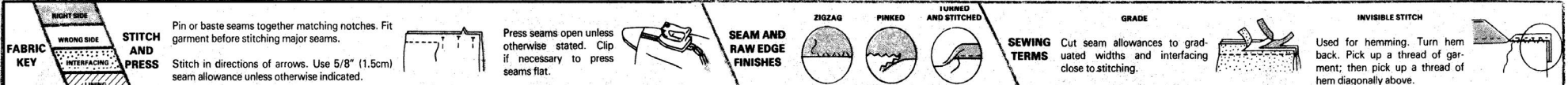


Stitch center seam of RUFFLE (3).

Fold ruffle in half lengthwise, WRONG SIDES TOGETHER. Baste raw edges together.

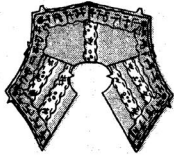
To gather ruffle, machine-baste 5/8" and 1/2" (1.5cm and 1.3cm) from raw edge, breaking basting at seams and LARGE circles.





8899 - PAGE 2

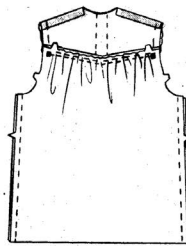
Pin ruffle to yoke, RIGHT SIDES TOGETHER, matching squares, center backs and LARGE circles to shoulder seams (disregarding notches on the yoke). Pull up bobbin threads and adjust gathers to fit. Baste.



Pin yoke to back, RIGHT SIDES TOGETHER, matching notches and center backs. Pull up bobbin threads and adjust gathers to fit. Baste. Stitch, ending stitching at squares.

Press seam allowances toward yoke.

Stitch back to front at sides.



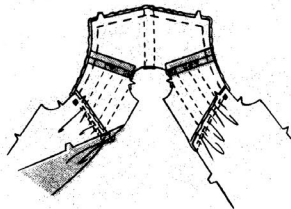
2. FRONTS AND BACK

To gather upper edge of FRONT (4), machine-baste 5/8" and 1/2" (1.5cm and 1.3cm) from raw edge between notch and front seam line.

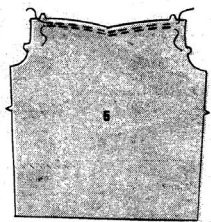


Pin yokes to fronts, RIGHT SIDES TOGETHER, matching notches, having front edges even. Pull up bobbin threads and adjust gathers to fit. Baste. Stitch, ending stitching at squares.

Press seam allowances toward yoke.



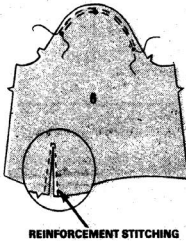
To gather upper edge of BACK (5), machine-baste 5/8" and 1/2" (1.5cm and 1.3cm) from raw edge between notches.



3. SLEEVES

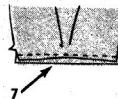
To gather cap of SLEEVE (6), machine-baste 5/8" and 1/2" (1.5cm and 1.3cm) from raw edge between small circles.

To reinforce sleeve opening, machine-stitch on dotted line, taking one stitch across top of opening. Slash on solid line.



REINFORCEMENT STITCHING

Baste RIGHT SIDE of CONTINUOUS LAP (7) to WRONG SIDE of sleeve, placing reinforcement stitching on sleeve along the 1/4" (6mm) seam allowance on lap. Stitch. Press seam allowances toward lap.



Turn under 1/4" (6mm) on other edge of lap and stitch over seam on OUTSIDE.



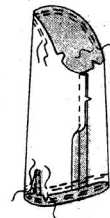
Bring edges of lap together. Stitch diagonally across upper end of lap.

Press front edge of lap to INSIDE. Baste to sleeve at lower edge.



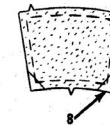
Stitch sleeve seam.

To gather lower edge of sleeve, machine-baste 5/8" and 1/2" (1.5cm and 1.3cm) from raw edge between notch and lap.

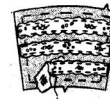


INTERFACING

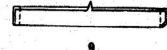
Pin interfacing to WRONG SIDE of CUFF (8). Cut lower corners of interfacing diagonally to 1/4" (6mm) INSIDE seam line. Baste.



With RIGHT SIDES UP, pin lace between lines indicated on cuff. Stitch close to long edges of lace.



Fold SLEEVE RUFFLE (9) in half lengthwise, RIGHT SIDES TOGETHER, matching notches, and having edges even. Stitch ends.



Cut corners diagonally. GRADE seam allowances: see SEWING TERMS.

Turn RIGHT SIDE OUT. Press. Baste raw edges together.



To gather NOTCHED edge of ruffle, machine-baste 5/8" and 1/2" (1.5cm and 1.3cm) from raw edge.

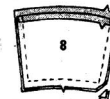
Pin ruffle to lower edge of cuff, between small circles, matching notches. Pull up bobbin threads and adjust gathers to fit. Baste.



Press under 5/8" (1.5cm) on upper edge of CUFF FACING (8).

Stitch facing to cuff along sides and lower edges, RIGHT SIDES TOGETHER.

Cut corners diagonally. GRADE seam allowances.



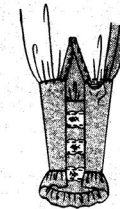
Turn RIGHT SIDE OUT. Press.

Pin cuff to sleeve, RIGHT SIDES TOGETHER, matching notches and having opening edges even. Pull up bobbin threads and adjust gathers to fit. Baste. Stitch.

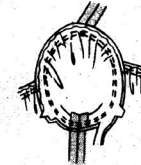
GRADE seam allowances. Press seam allowances toward cuff.



Hem edge over seam. Press.



With RIGHT SIDES TOGETHER, pin sleeve into armhole, matching notches, underarm seams, small circles to small circles on yoke and LARGE circle to shoulder seam. Pull up bobbin threads and adjust gathers to fit. Baste. Stitch.



Stitch again 1/4" (6mm) from first stitching. Cut seam allowances close to second stitching below notches.

Turn seam allowances toward blouse above notches.

Baste across front ends of ruffle.

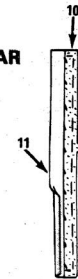
Top-stitch 1/4" (6mm) from seam along lower edges of yoke and across armhole edges.



4. FRONT BANDS AND COLLAR

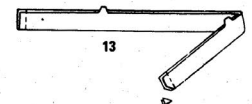
Baste FRONT INTERFACING (10) to WRONG SIDE of FRONT BAND (11), matching notches. Sew to fold line.

Press under 5/8" (1.5cm) on UN-NOTCHED edge of front band.



Fold NECK RUFFLE (13) in half lengthwise, RIGHT SIDES TOGETHER, matching notches and having raw edges even. Stitch ends.

Cut corners diagonally. GRADE seam allowances.

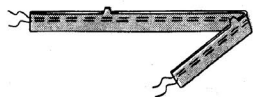


CONTINUED ON PAGE 3

8699 - PAGE 3

Turn RIGHT SIDE OUT. Press. Baste raw edges together.

To gather NOTCHED edge of ruffle, machine-baste 5/8" and 1/2" (1.5cm and 1.3cm) from raw edge.



Pin ruffle to upper edge of collar between small circles, matching notches and center backs. Pull up bobbin threads and adjust gathers to fit. Baste.



Press under 5/8" (1.5cm) on lower edge of COLLAR FACING (12).

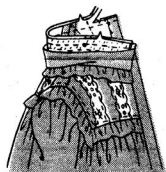


Pin facing to collar (over ruffle), RIGHT SIDES TOGETHER. Stitch along upper and front edges.

Cut corners diagonally. GRADE seam allowances.

Turn RIGHT SIDE OUT. Press.

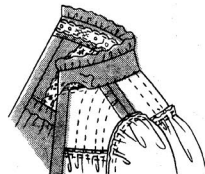
Pin collar to neck edge, RIGHT SIDES TOGETHER, matching notches, center backs, LARGE circles to shoulder seams and having front edges even. Baste. Stitch.



GRADE seam allowances. Clip curves. Press seam allowances toward collar.

Hem edge of collar facing over seam. Press.

If desired, edge-stitch lower edge of collar.



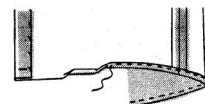
5. FINISHING

Make buttonholes in RIGHT front, RIGHT end of collar and in cuffs at markings.

Lap RIGHT front over LEFT, matching centers. Mark and sew buttons under buttonholes.

Sew buttons to positions on each cuff.

Finish lower edge of blouse with a 5/8" (1.5cm) narrow hem.

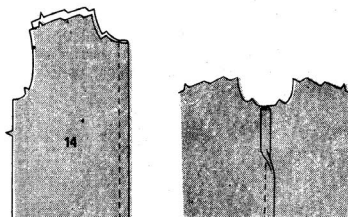


BLOUSE - B

1. FRONT AND BACKS

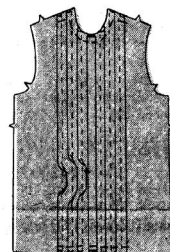
FRONT TUCKS

To make center tuck in FRONT (14), on OUTSIDE, fold on solid line and stitch on dotted lines. Bring center of tuck to meet seam. Press.



To make remaining tucks, on OUTSIDE, fold on solid line and stitch on dotted lines. Press away from center.

Baste across upper and lower edge of tucks.



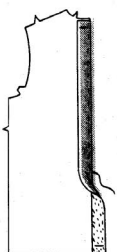
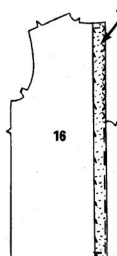
BACK INTERFACING

Baste BACK INTERFACING (15) to WRONG SIDE of BACK (16). Sew to facing line.

Finish long edge of back extension with zigzag stitching, pinking or turning under 1/4" (6mm) and edge-stitching.

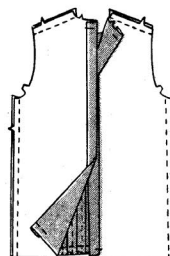
Turn back extension to INSIDE on facing line. Baste across upper and lower edge.

If desired, edge-stitch along fold edge.



2. SHOULDERS AND SIDE SEAMS

Stitch back to front at shoulders and sides.



3. COLLAR

To make tuck in COLLAR (17), on OUTSIDE, fold on solid line and stitch on dotted lines. Bring center of tuck to meet seam. Press.

Baste across ends of tuck.

Baste INTERFACING (18) to NOTCHED edge of collar. Sew to fold line.

Press under 5/8" (1.5cm) UN-NOTCHED edge of collar.

Fold collar on fold line, RIGHT SIDES TOGETHER. Stitch ends.

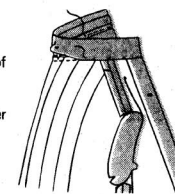
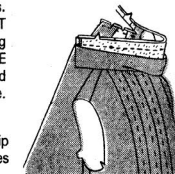
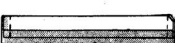
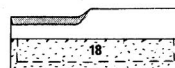
Cut corners diagonally. GRADE seam allowances: see SEWING TERMS.

Turn RIGHT SIDE OUT. Press. Pin collar to neck edge, RIGHT SIDES TOGETHER, matching notches, center fronts, LARGE circles to shoulder seams, and having back edges even. Baste. Stitch.

GRADE seam allowances. Clip curves. Press seam allowances toward collar.

Hem pressed under edge of collar over seam. Press.

If desired, edge-stitch lower edge of collar.

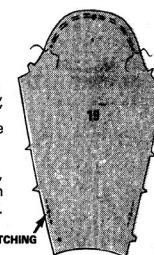


4. SLEEVES

To gather cap of SLEEVE (19), machine-baste 5/8" and 1/2" (1.5cm and 1.3cm) from raw edge between small circles.

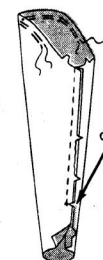
To reinforce side edges of sleeve, machine-stitch 5/8" (1.5cm) each side of LARGE circle, as illustrated.

REINFORCEMENT STITCHING



Stitch sleeve seam above LARGE circle, easing back edge of sleeve between notches.

Clip to LARGE circle, as illustrated.

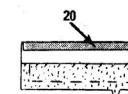


Finish lower edge of sleeve with a 5/8" (1.5cm) narrow hem.



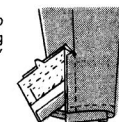
Press under 5/8" (1.5cm) on long UN-NOTCHED edge of CONTINUOUS LAP (20).

Baste interfacing to WRONG SIDE of NOTCHED edge of lap. Sew to fold line.



Baste RIGHT SIDE of continuous lap to WRONG SIDE of sleeve, matching notches and circles, having ends 5/8" (1.5cm) beyond hem. Stitch.

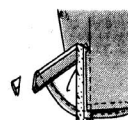
GRADE seam allowances.



Press seam allowances toward lap.

Fold lap on fold line, RIGHT SIDES TOGETHER. Stitch ends.

Cut corners diagonally. GRADE seam allowances.



Turn RIGHT SIDE OUT and stitch over seam on OUTSIDE.



Press back edge of lap to INSIDE on seam line. Pin.



With RIGHT SIDES TOGETHER, pin sleeve into armhole, matching notches, underarm seams, small circles and LARGE circle to shoulder seam. Pull up bobbin threads and adjust gathers to fit. Baste. Stitch.

Stitch again 1/4" (6mm) from first stitching. Cut seam allowances close to second stitching below notches.

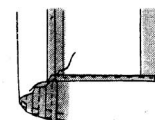


5. FINISHING

Make buttonholes in LEFT back and LEFT end of collar at markings. Make buttonholes on sleeve at markings, thru all thicknesses.

Lap LEFT back over RIGHT, matching centers. Mark and sew buttons under buttonholes. Sew buttons to position on each sleeve continuous lap.

Finish lower edge of blouse with a 5/8" (1.5cm) narrow hem.

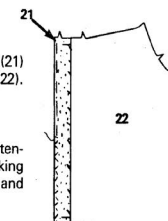


BLOUSE - C

1. FRONTS, BACK AND SLEEVES

Baste FRONT INTERFACING (21) to WRONG SIDE of FRONT (22). Sew to facing line.

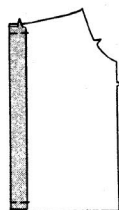
Finish long edge of front extension with zigzag stitching, pinking or turning under 1/4" (6mm) and edge-stitching.



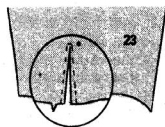
CONTINUED ON OTHER SIDE

8699 - PAGE 4

Turn front extensions to **INSIDE** on facing line. Baste across upper and lower edges.



To reinforce **SLEEVE** (23) opening, machine-stitch on dotted line, taking one stitch across top of opening. Slash on solid line.



Baste **RIGHT SIDE** of **CONTINUOUS LAP** (24) to **WRONG SIDE** of sleeve, placing reinforcement stitching on sleeve along the 1/4" (6mm) seam allowance on lap. Stitch. Press seam allowances toward lap.



Turn under 1/4" (6mm) on other edge of lap and stitch over seam on **OUTSIDE**.



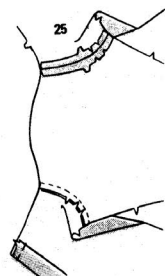
Bring edges of lap together. Stitch diagonally across upper end of lap.



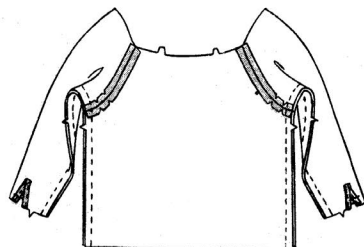
Press front edge of lap to **INSIDE**. Baste to sleeve at lower edge.

Pin sleeve to front and **BACK** (25), **RIGHT SIDES TOGETHER**, matching notches. Stitch.

Press seams open, clipping as necessary.

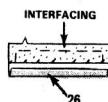


Stitch underarm seam of blouse and sleeve, matching armhole seams and notches.



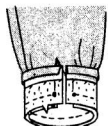
Press under 5/8" (1.5cm) on long **UN-NOTCHED** edge of **CUFF** (26).

Baste interfacing to **WRONG SIDE** of **NOTCHED** edge of cuff. Sew to fold line.



Pin cuff to sleeve, **RIGHT SIDES TOGETHER**, matching notches and circles to opening edges. Baste. Stitch.

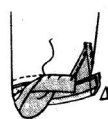
GRADE seam allowances. Press seam allowances toward cuff.



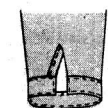
Fold cuff on fold line, **RIGHT SIDES TOGETHER**. Stitch ends.

Cut corners diagonally. **GRADE** seam allowances.

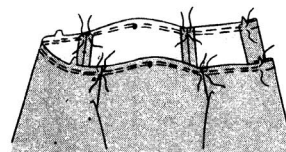
Turn **RIGHT SIDE OUT**. Hem edge over seam. Press.



If desired, top-stitch close to all edges of cuff.



To gather upper edge of blouse, machine-baste 5/8" and 1/2" (1.5cm and 1.3cm) from raw edge, breaking basting at seams.

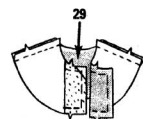


2. FRONT AND BACK YOKE

Pin **FRONT INTERFACING** (27) to **WRONG SIDE** of **FRONT YOKE** (28). Cut corner of interfacing diagonally to 1/4" (6mm) **INSIDE** seam line, as illustrated. Baste.

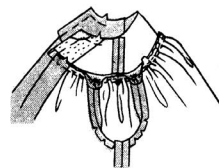


Stitch front yoke to **BACK YOKE** (29) at shoulders.



Pin yoke to front and back, **RIGHT SIDES TOGETHER**, matching notches, center backs, small circles to sleeve seams, shoulder seam to **LARGE** circle, and having yoke extend 5/8" (1.5cm) beyond front edge. Pull up bobbin threads and adjust gathers to fit. Baste. Stitch.

GRADE seam allowances. Press seam allowances toward yoke.



3. COLLAR

Pin **UNDER COLLAR** (30) to **UNDER COLLAR FACING** (30), **RIGHT SIDES TOGETHER**. Stitch along **UN-NOTCHED** edges.

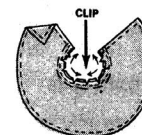
Cut corners diagonally. **GRADE** seam allowances. Clip curves.



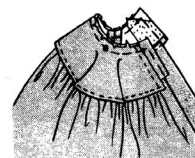
Turn **RIGHT SIDE OUT**. Press. Baste raw edges together.

Top-stitch 1/4" (6mm) from seamed edges.

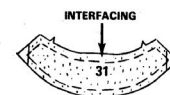
To stay-stitch neck edge, stitch 1/2" (1.3cm) from raw edge in direction of arrows. Clip to stay-stitching.



Pin under collar to neck edge, **RIGHT SIDES UP**, matching notches, center backs, **LARGE** circle to shoulder seam, having ends of collar at small circles on front. Baste.



Pin interfacing to **WRONG SIDE** of **UPPER COLLAR** (31). Cut lower corners of interfacing diagonally to 1/4" (6mm) **INSIDE** seam line, as illustrated. Baste.



Pin **UPPER COLLAR FACING** (31) to upper collar, **RIGHT SIDES TOGETHER**. Stitch along **UN-NOTCHED** edges.



Cut corners diagonally. **GRADE** seam allowance. Clip curves.

Turn **RIGHT SIDE OUT**. Press. Baste raw edges together.

Top-stitch 1/4" (6mm) from seamed edges.

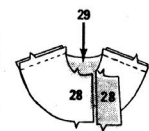


Pin upper collar to neck edge, **RIGHT SIDES UP** (on top of under collar), matching notches, center backs, **LARGE** circle to shoulder seam, having ends of collar at small circles on front. Baste.



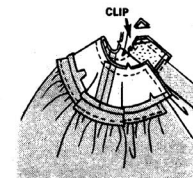
Stitch **FRONT YOKE FACING** (28) to **BACK YOKE FACING** (29) at shoulders.

Press under 5/8" (1.5cm) on lower edge of yoke facing.

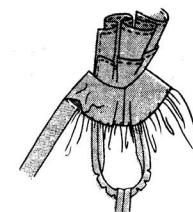


Pin yoke facing to yoke, **RIGHT SIDES TOGETHER** (over collars), matching notches, center backs, shoulder seams, and having front edges even. Baste. Stitch neck and front edges.

Cut corners diagonally. **GRADE** seam allowances. Clip curves.



Turn **RIGHT SIDE OUT**. Press. Hem pressed under edge over seams.



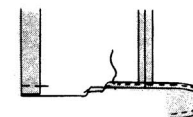
4. FINISHING

Make buttonholes at **RIGHT** front and in cuffs at markings.

Lap **RIGHT** front over **LEFT** front, matching centers. Mark and sew buttons under buttonholes.

Sew buttons to positions to each cuff.

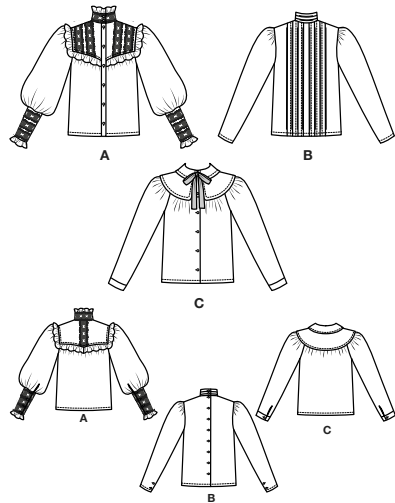
Finish lower edge of blouse with a 5/8" (1.5cm) narrow hem.



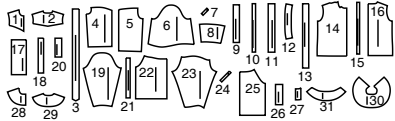
Ribbon is worn underneath collar. Tie into bow. (Cut ends diagonally.)



SUPPLEMENTAL CUTTING LAYOUTS

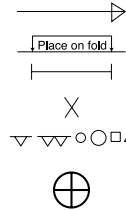


31 PATTERN PIECES



- 1 Front Yoke-A
- 2 Back Yoke-A
- 3 Ruffle-A
- 4 Front-A
- 5 Back-A
- 6 Sleeve-A
- 7 Continuous Lap-A
- 8 Cuff-A
- 9 Sleeve Ruffle-A
- 10 Front Interfacing-A
- 11 Front Band-A
- 12 Collar-A
- 13 Neck Ruffle-A
- 14 Front-B
- 15 Back Interfacing-B
- 16 Back-B
- 17 Collar-B
- 18 Interfacing-B
- 19 Sleeve-B
- 20 Continuous Lap-B
- 21 Front Interfacing-C
- 22 Front-C
- 23 Sleeve-C
- 24 Continuous Lap-C
- 25 Back-C
- 26 Cuff-C
- 27 Front Interfacing-C
- 28 Front Yoke-C
- 29 Back Yoke-C
- 30 Undercollar-C
- 31 Upper Collar-C

PATTERN MARKINGS



GRAINLINE: Place on straight grain of fabric, parallel to selvage or fold.

FOLDLINE: Place line on fold of fabric.

BUTTONHOLE MARKING: Indicates exact length and placement of buttonholes.

BUTTON MARKING: Indicates button placement.

NOTCHES AND SYMBOLS: For matching seams and construction details.

Indicates the Bustline, Waistline, Hip and/or Biceps. Measurements refer to circumference of Finished Garment (Body Measurement + Wearing Ease + Design Ease). Adjust pattern if necessary. The measurement excludes pleats, tucks, darts and seam allowances.

SEAM ALLOWANCE: 5/8" (1.5cm) included unless otherwise indicated, but not printed on tissue.

ADJUST IF NECESSARY

Lengthen or Shorten at adjustment lines (==) or where indicated on pattern. If substantial length is added, you may need to purchase additional fabric.

TO SHORTEN: Crease along adjustment line. Make a fold half the amount needed. Tape in place.

TO LENGTHEN: Slash between adjustment lines. Spread amount as needed, keeping edges parallel. Tape over paper.

When Alteration lines are not on tissue, lengthen or shorten at lower edge.

CUTTING AND MARKING

SHRINK FABRIC if not labeled pre-shrunk. Press.

CIRCLE LAYOUT for View, Size, Fabric Width.

Use **WITH NAP** layout for fabrics with one-way designs, nap, pile or surface shading. Because most knits have surface shading, a with nap layout is used.

For **DOUBLE THICKNESS (WITH FOLD)** - fold fabric with right sides together.

*** DOUBLE THICKNESS (WITHOUT FOLD)** - For fabrics with nap, fold fabric crosswise, right sides together. Mark as shown. Cut along crosswise fold of fabric (A). Turn upper layer 180° so arrows go in same direction and place over lower layer, right sides together (B).

For **SINGLE THICKNESS** - place fabric right side up. (For Fur Pile fabrics, place pile side down.)

★ Cut other pieces first, allowing enough fabric to cut this piece. Open fabric. For "Cut 1" pieces, cut piece once on single layer of fabric with piece face up on right side of fabric.

Pattern may have cutting lines for several sizes. Select the proper cutting line or pattern pieces for your size.

Before **CUTTING** place all pieces on fabric according to layout. Pin. (**Layouts show approximate position of pattern pieces; position may vary according to your pattern size.**) Cut **ACCURATELY**, cutting notches outward.

Before removing pattern, **TRANSFER MARKINGS** and lines of construction to Wrong Side of fabric, using the Pin and Chalk Pencil method or Tracing Paper and Dressmaker Wheel. Markings needed on right side of fabric should be thread traced.

NOTE: Broken-line boxes (a! b! c!) in layouts represent pieces cut by measurements provided.

CUTTING LAYOUTS

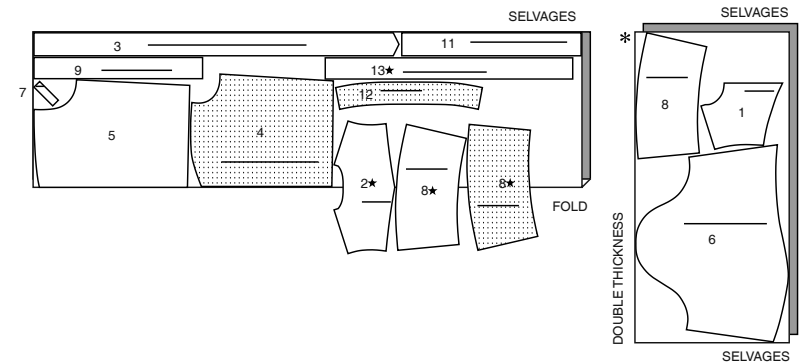
RIGHT SIDE OF PATTERN	WRONG SIDE OF PATTERN	RIGHT SIDE OF FABRIC	WRONG SIDE OF FABRIC

FOR ADDITIONAL SIZES 16-24

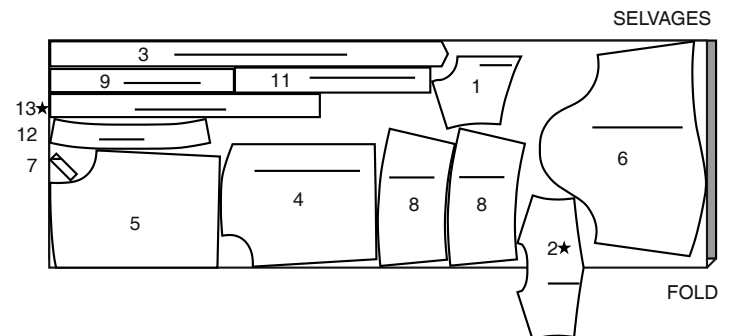
BLOUSE A

USE PIECES 1 2 3 4 5 6 7 8 9 11 12 13

45" (115CM)
WITH NAP
SIZES 16 18 20 22 24



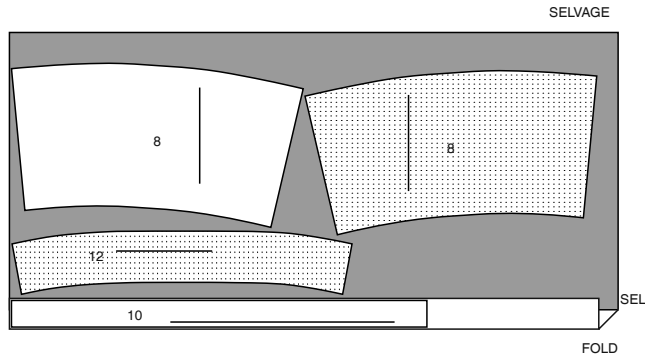
60" (150CM)
WITH NAP
SIZES 16 18 20 22 24



INTERFACING A

USE PIECES 8 10 12

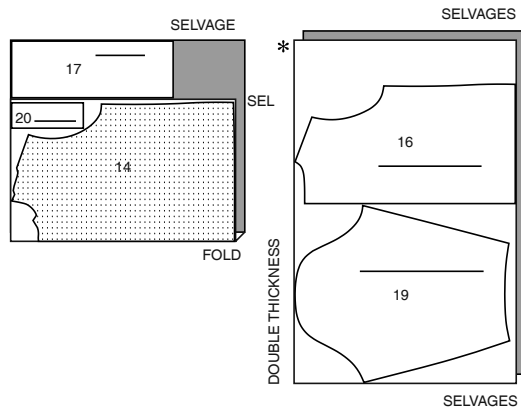
20" (51CM)
SIZES 16 18 20 22 24



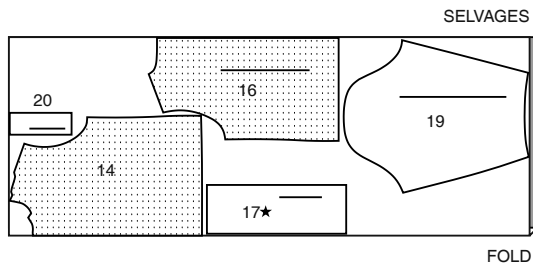
BLOUSE B

USE PIECES 14 16 17 19 20

45" (115CM)
WITH NAP
SIZES 16 18 20 22 24



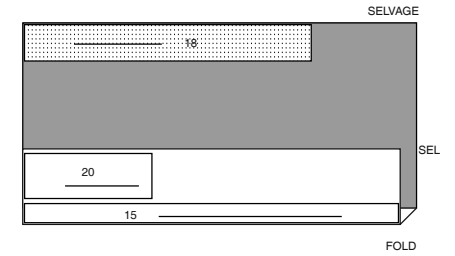
60" (150CM)
WITH NAP
SIZES 16 18 20 22 24



INTERFACING B

USE PIECES 15 18 20

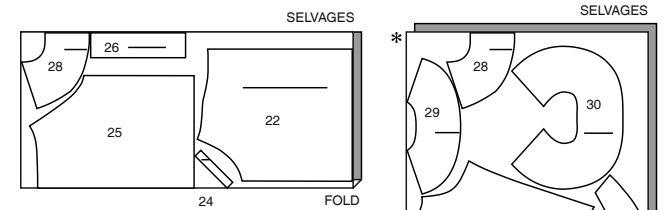
20" (51CM)
SIZES 16 18 20 22 24



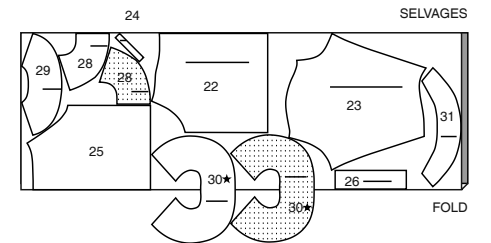
BLOUSE C

USE PIECES 22 23 24 25 26 28 29 30 31

45" (115CM)
WITH NAP
SIZES 16 18 20 22 24



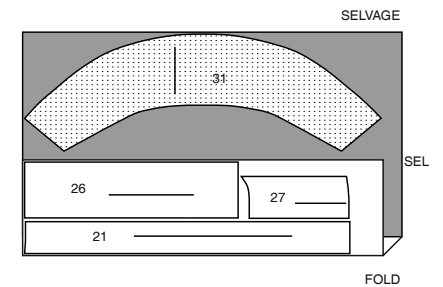
60" (150CM)
WITH NAP
SIZES 16 18 20 22 24



INTERFACING C

USE PIECES 21 26 27 31

20" (51CM)
SIZES 16 18 20 22 24





Congrats!

You've completed your sewing adventure

SHARE YOUR LOOK



Post your pattern and tag us using [#simplicitypatterns](#)
[@simplicity_creative_group](#)
[@simplicitymccallsuk](#)
[@simplicitymccallsaustralia](#)
for a chance to be featured on our social media.

Look for more PDF patterns at [simplicity.com](#) or for customers outside the U.S. and Canada visit [sewdirect.com](#) and [sewdirect.com.au](#)

Have a question or need help with your sewing project contact us:
[Simplicity.com](#) [Sewdirect.com](#) [Sewdirect.com.au](#)

McCall's
by **design**_{group}

McCall's ©2025 a division of IG Design Group Americas Inc. • Atlanta, GA 30342 USA [www.thedesigngroup.com](#) • All Rights Reserved. [www.mccall.com](#) • Made in the U.S.A. Fabriqué aux États-Unis.
To be used for individual private home use only and not for commercial or manufacturing purposes. • A usage privé seulement et non à des fins commerciales ou de production en série. • Para uso privado solamente, no se puede utilizar con propósitos de comercialización o de producción en serie.