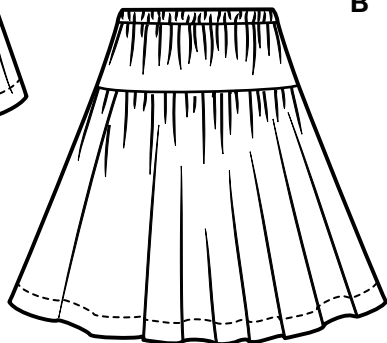
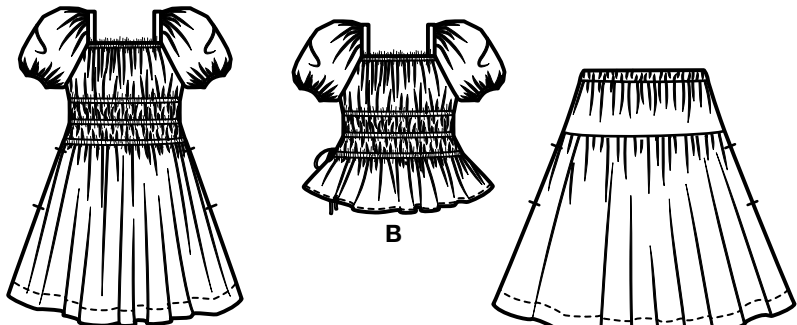


A

B



C

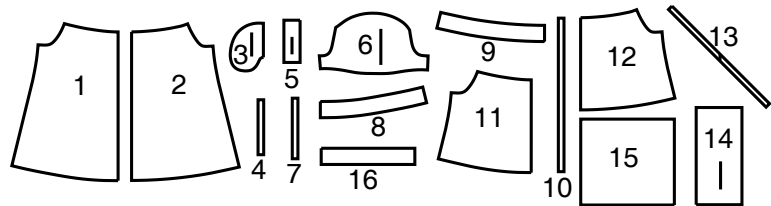


A

B

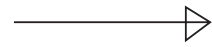
C

16 PATTERN PIECES

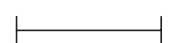


- 1 Front-A
- 2 Back-A
- 3 Pocket-A,C
- 4 Elastic Guide for Neck-A,B
- 5 Shoulder Strap-A,B
- 6 Sleeve-A,B
- 7 Elastic Guide for Sleeve-A,B
- 8 Front Hem Facing-A
- 9 Back Hem Facing-A
- 10 Guide for Elastic-A,B
- 11 Front-B
- 12 Back-B
- 13 Tie End-B
- 14 Yoke Front and Back-C
- 15 Front and Back-C
- 16 Hem Facing-C

PATTERN MARKINGS



Place on fold



GRAINLINE: Place on straight grain of fabric, parallel to selvage or fold.

FOLDLINE: Place line on fold of fabric.

BUTTONHOLE MARKING: Indicates exact length and placement of buttonholes.

BUTTON MARKING: Indicates button placement.

NOTCHES AND SYMBOLS: For matching seams and construction details.

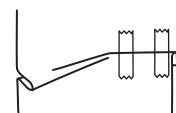
Indicates the Bustline, Waistline, Hip and/or Biceps. Measurements refer to circumference of Finished Garment (Body Measurement + Wearing Ease + Design Ease). Adjust pattern if necessary. The measurement excludes pleats, tucks, darts and seam allowances.

SEAM ALLOWANCE: 5/8" (1.5cm) included unless otherwise indicated, but not printed on tissue.

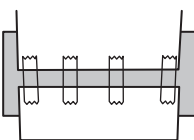
ADJUST IF NECESSARY

Lengthen or Shorten at adjustment lines (==) or where indicated on pattern. If substantial length is added, you may need to purchase additional fabric.

TO SHORTEN: Crease along adjustment line. Make a fold half the amount needed. Tape in place.



TO LENGTHEN: Slash between adjustment lines. Spread amount as needed, keeping edges parallel. Tape over paper.



When Alteration lines are not on tissue, lengthen or shorten at lower edge.

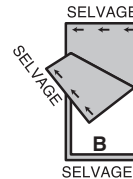
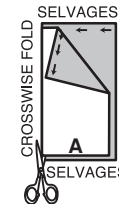
SHRINK FABRIC if not labeled pre-shrunk. Press.

CIRCLE LAYOUT for View, Size, Fabric Width.

Use **WITH NAP** layout for fabrics with one-way designs, nap, pile or surface shading. Because most knits have surface shading, a with nap layout is used.

For **DOUBLE THICKNESS (WITH FOLD)** - fold fabric with right sides together.

*** DOUBLE THICKNESS (WITHOUT FOLD)** - For fabrics with nap, fold fabric crosswise, right sides together. Mark as shown. Cut along crosswise fold of fabric (A). Turn upper layer 180° so arrows go in same direction and place over lower layer, right sides together (B).



For **SINGLE THICKNESS** - place fabric right side up. (For Fur Pile fabrics, place pile side down.)

CUTTING AND MARKING

★ Cut other pieces first, allowing enough fabric to cut this piece. Open fabric. For "Cut 1" pieces, cut piece once on single layer of fabric with piece face up on right side of fabric.

Pattern may have cutting lines for several sizes. Select the proper cutting line or pattern pieces for your size.

Before **CUTTING** place all pieces on fabric according to layout. Pin. (**Layouts show approximate position of pattern pieces; position may vary according to your pattern size.**) Cut **ACCURATELY**, cutting notches outward.

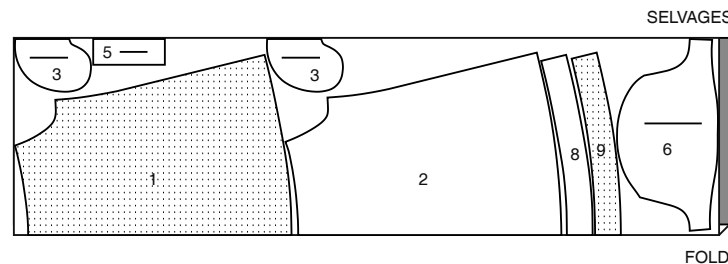
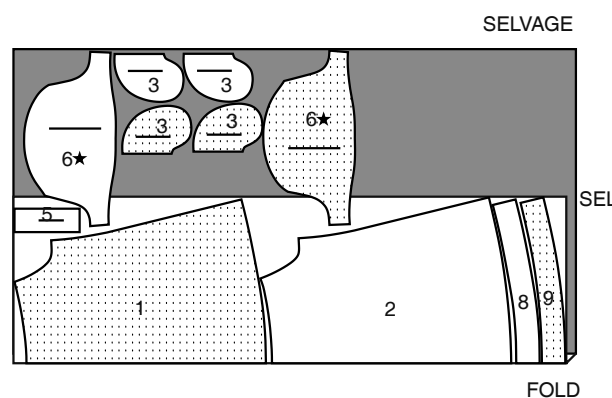
Before removing pattern, **TRANSFER MARKINGS** and lines of construction to Wrong Side of fabric, using the Pin and Chalk Pencil method or Tracing Paper and Dressmaker Wheel. Markings needed on right side of fabric should be thread traced.

NOTE: Broken-line boxes (a! b! c!) in layouts represent pieces cut by measurements provided.

CUTTING LAYOUTS

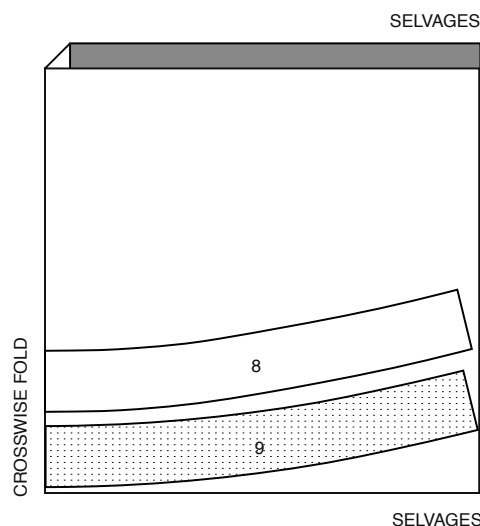
DRESS A

USE PIECES 1 2 3 5 6 8 9

45" (115CM)
WITH NAP
ALL SIZES60" (150CM)
WITH NAP
ALL SIZES

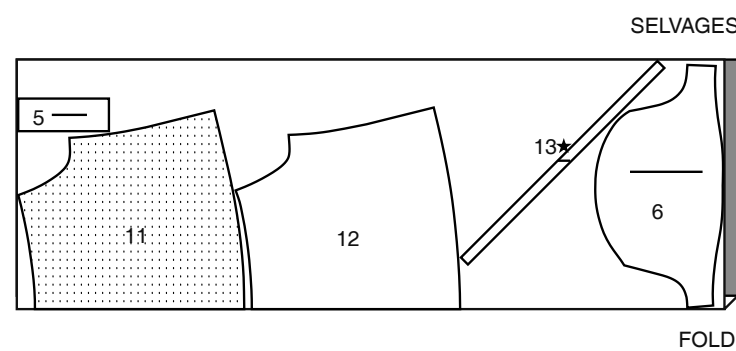
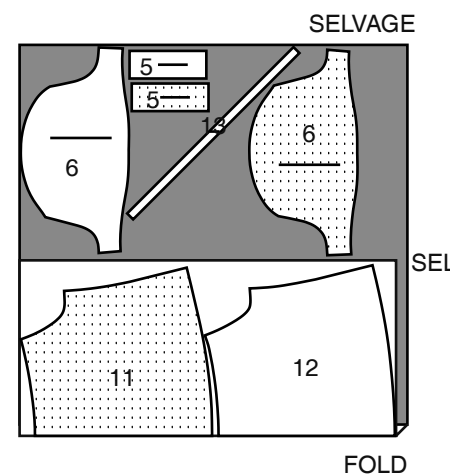
INTERFACING A

USE PIECES 8 9

20" (51CM)
ALL SIZES

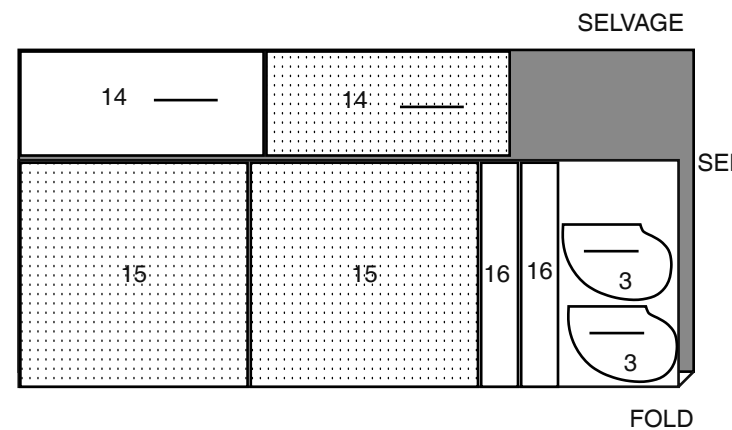
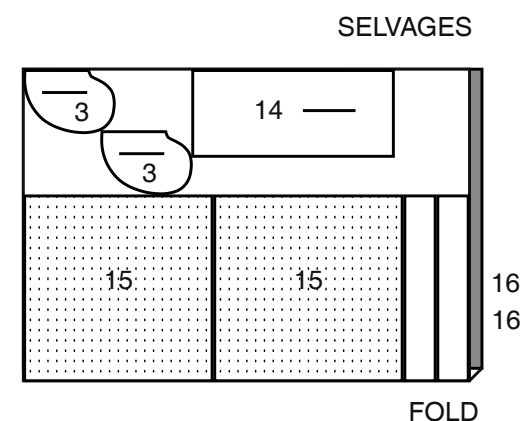
TOP B

USE PIECES 5 6 11 12 13

45" (115CM)
WITH NAP
ALL SIZES60" (150CM)
WITH NAP
ALL SIZES

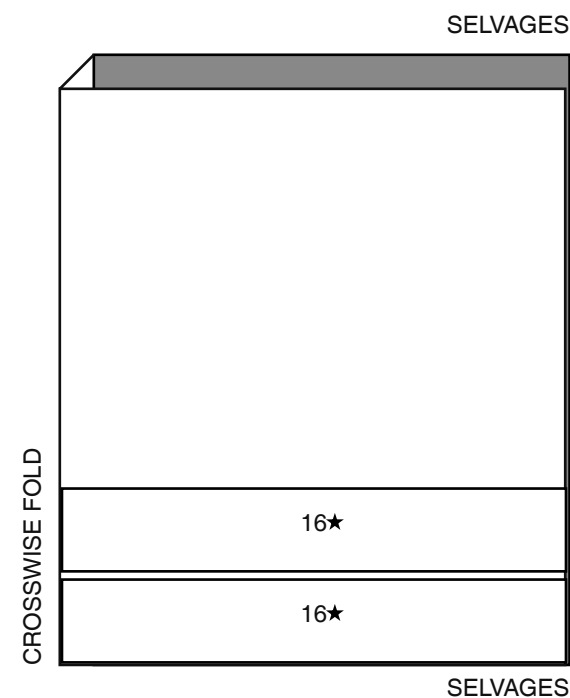
SKIRT C

USE PIECES 3 14 15 16

45" (115CM)
WITH NAP
ALL SIZES60" (150CM)
WITH NAP
ALL SIZES

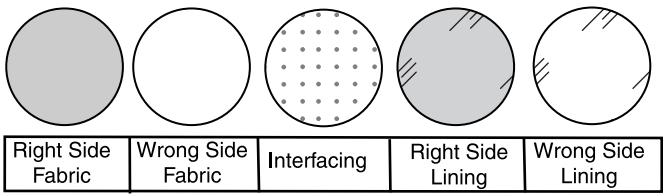
INTERFACING C

USE PIECE 16

20" (51CM)
ALL SIZES

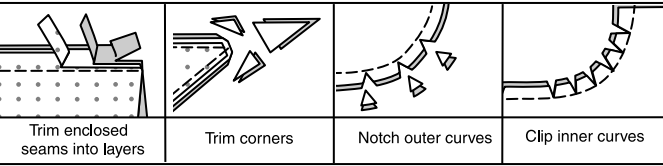
SEWING INFORMATION

FABRIC KEY



SEAM ALLOWANCES

Use 5/8" (1.5cm) seam allowances unless otherwise indicated.



PIN AND FIT

Pin or baste seams, **RIGHT SIDE TOGETHER**, matching notches. Fit garment before stitching major seams.

PRESS

Press seam allowances flat; then open unless otherwise stated. Clip where necessary so they lie flat.

GLOSSARY

Sewing methods in **BOLD TYPE** have Sewing Tutorial Video available. Scan QR CODE to watch videos:

GATHER – See **Gathering: “sewing two row gathers”** video.

EDGESTITCH – See **Machine Stitches: “how to sew an edgestitch”** video.

FINISH - See **Seams: “how to finish seam allowances”** video.

SLIPSTITCH – See **Hand Stitching: “how to slip stitch”** video.

TACK – See **Hand Stitching: “how to tack”** video.

TOPSTITCH – See **Machine Stitches: “how to topstitch”** video.

TRIM SEAM – See **Seams: “how to trim, clip and layer seams”** video.

UNDERSTITCH – See **Machine Stitches: “how to understitch”** video.

SEWING TUTORIALS



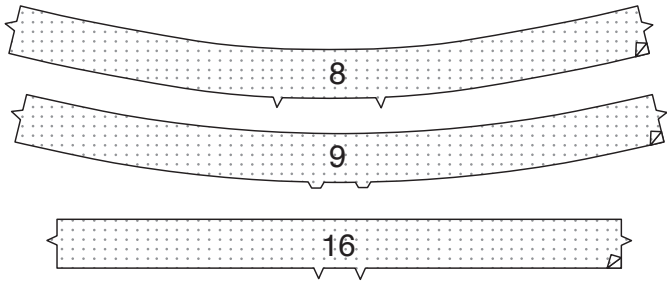
Build your skills viewing short, easy-to-follow videos at simplicity.com/sewingtutorials

DRESS A, TOP B

NOTE: Under each sub-heading, View A will be shown unless otherwise indicated.

INTERFACING

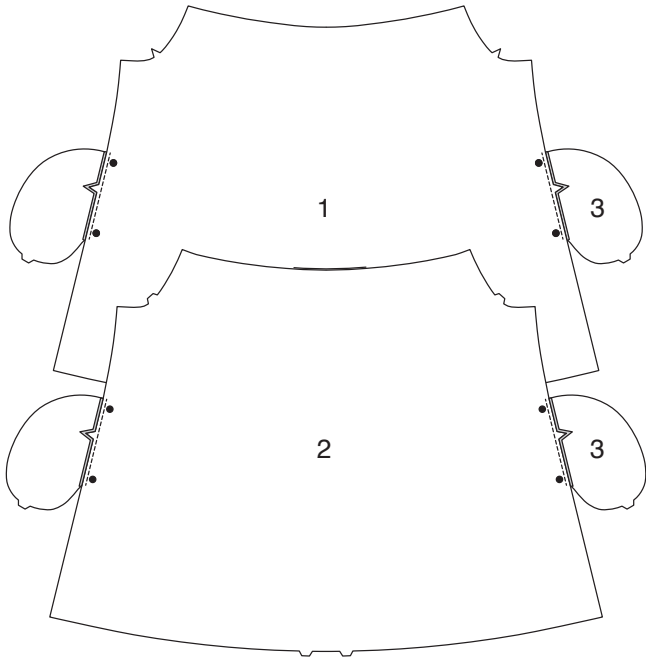
1. Pin **INTERFACING** to wrong side of each matching **FABRIC** section. Fuse, following manufacturer’s instructions. Trim corners of interfacing as shown.



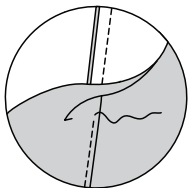
FRONT AND BACK

2. VIEW A-

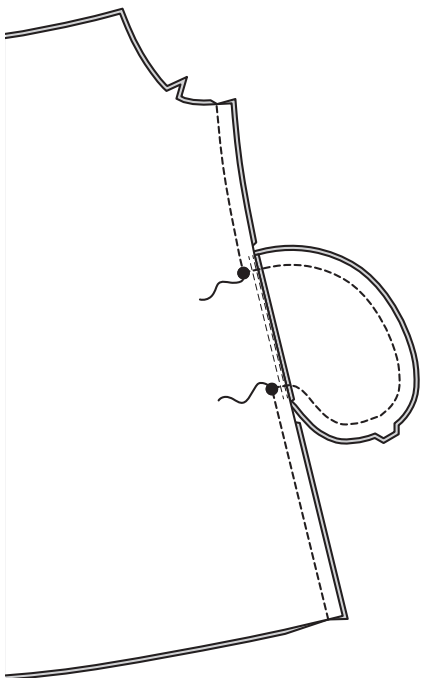
Stitch one **POCKET** (3) section to **FRONT** (1) and **BACK** (2) at each side in a 1/4”(6mm) seam. Press seams toward pockets.



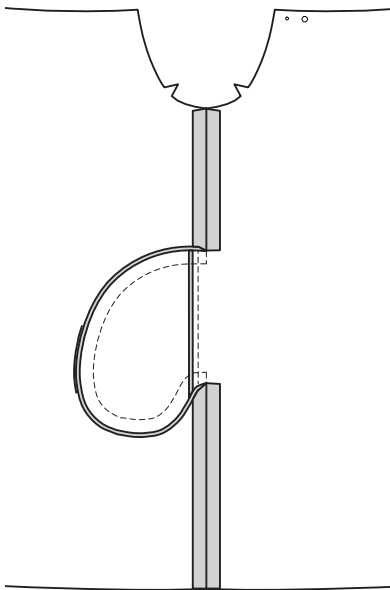
3. UNDERSTITCH front pocket.



4. Stitch front and back together at sides, leaving open between large dots. Stitch pocket edges together to side seams. Clip back seam allowances above and below pockets.

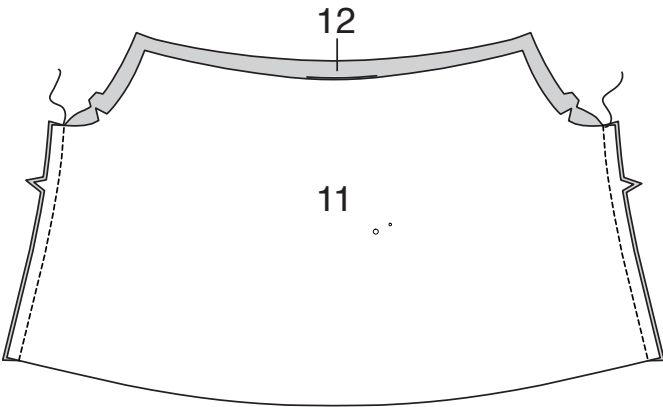


5. Turn pockets toward front along seamlines; press.



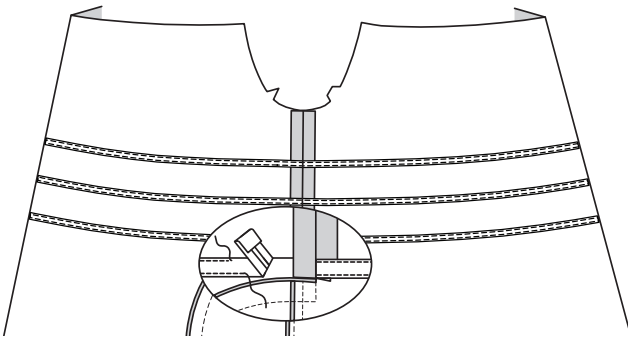
6. VIEW B-

With **RIGHT** sides together, stitch **FRONT** (11) to **BACK** (12) together at sides.



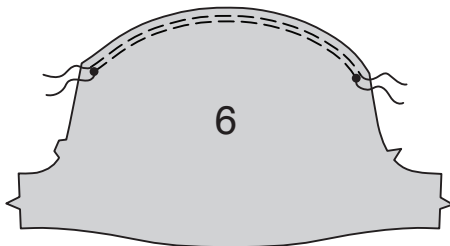
7. VIEW A, B-

Cut three pieces of bias tape the length of placement lines plus 1/2” (1.3cm) To form casings, on **INSIDE**, pin upper folded edge of bias tape to garment along placement line. Turn under 1/4”(6mm) on ends of tape so that they meet at **ONE** side seam. Stitch close to long edges of tape.

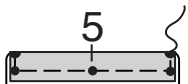


SLEEVE

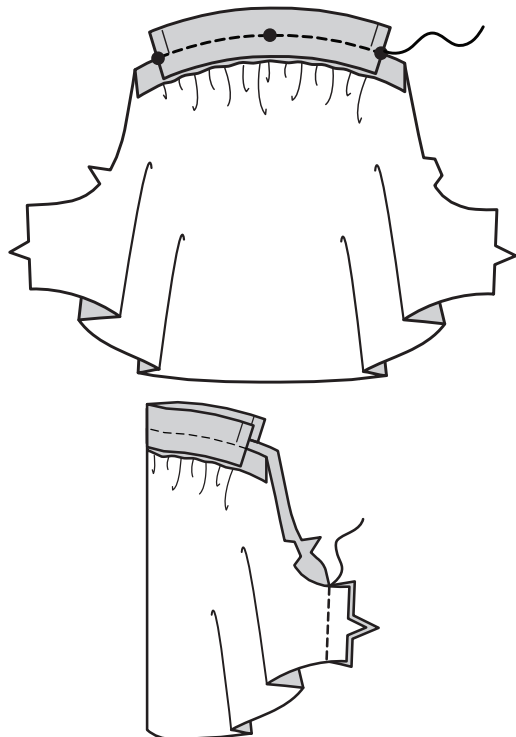
8. GATHER upper edge of **SLEEVE** (6) between outer small dots.



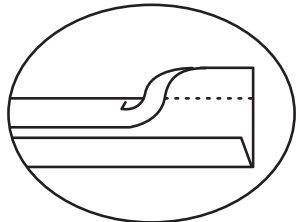
9. Fold **SHOULDER STRAP** (5) in half lengthwise, with **WRONG** sides together. Baste raw edges together.



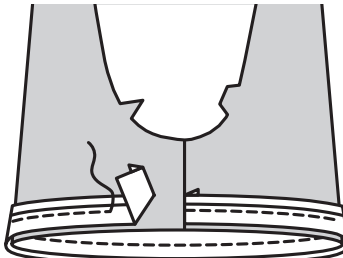
10. With **RIGHT** sides together, pin shoulder strap to upper edge of sleeve matching small dots. Adjust gathers to fit. Baste. Stitch. Press seam toward sleeve. Stitch sleeve seam.



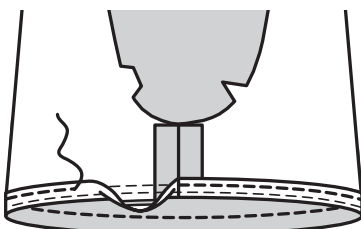
11. To form casings, Cut two pieces of bias tape the length of lower edge of sleeve, plus 1/2” (1.3cm). Open out one edge of tape.



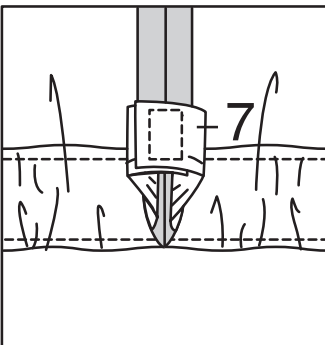
12. On **OUTSIDE**, pin tape to lower edge of sleeve having raw edges even. Turn under 1/4”(6mm) on ends of tape so that they meet at underarm seam. Stitch in a 3/8”(1cm) seam. **TRIM SEAM.**



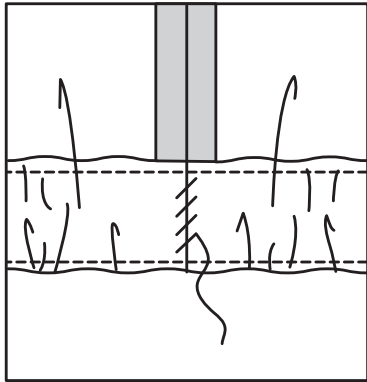
13. Press tape out, pressing seam toward tape. **UNDERSTITCH** tape. Turn tape to **INSIDE**. **EDGESTITCH** tape in place, forming casing.



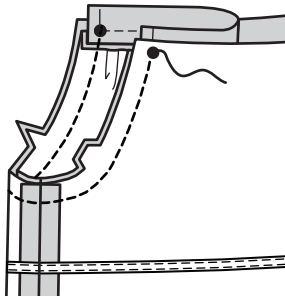
14. Cut two pieces of 3/8” (1cm) elastic the length of **ELASTIC GUIDE FOR SLEEVE** (7). Insert end of elastic through opening in casing having seam allowances even. Stitch ends of elastic along seam allowance.



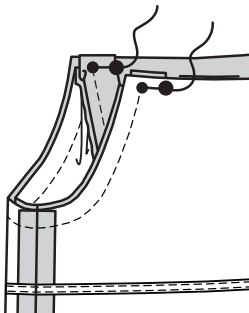
15. SLIPSTITCH opening closed in casing. Distribute fullness evenly.
TIP - To secure elastic so it won't twist in wearing, stitch through all thicknesses of casing in the groove of seam.



16. With **RIGHT** sides together, pin sleeve to armhole edge matching small dots. Stitch, ending at small dots.

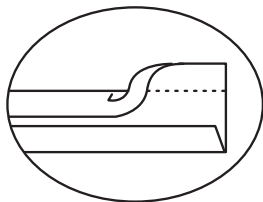


17. Rotate upper edge of sleeve matching large dots on front and back, as shown. Baste shoulder strap in place between small and large dots.

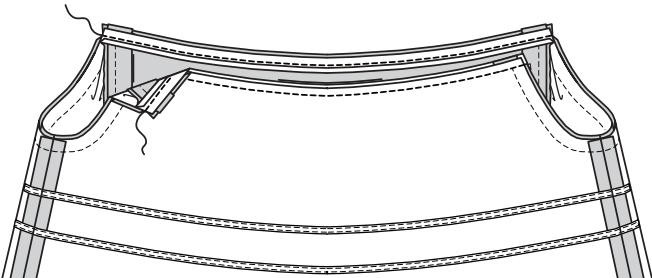


FRONT AND BACK CASINGS

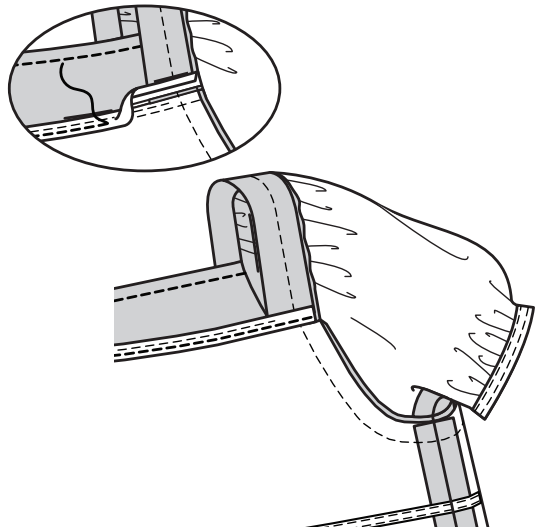
18. Cut one piece of bias tape the length of front neck edge and one piece the length of back neck edge. Open out one edge of tape.



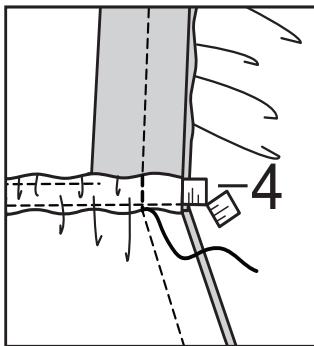
19. On **OUTSIDE**, pin tape to neck edge having raw edges even. Stitch in a 3/8"(1cm). **TRIM SEAM.**



20. Press tape out, pressing seam toward tape. **UNDERSTITCH** tape. Turn tape to **INSIDE**. Press. **EDGESTITCH** lower edge of tape in place, forming casing.

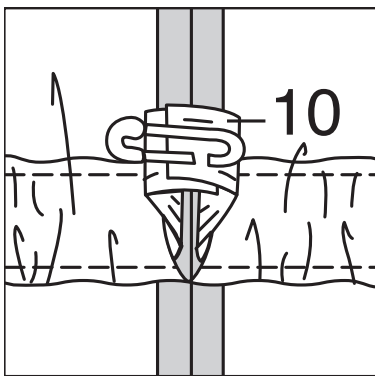


21. Cut two pieces of elastic the length of **ELASTIC GUIDE FOR NECK (4)**. Insert end of elastic through opening in casing having seam allowances even. Stitch ends of elastic along seam allowance. Pull ends of elastic out and trim close to stitching.

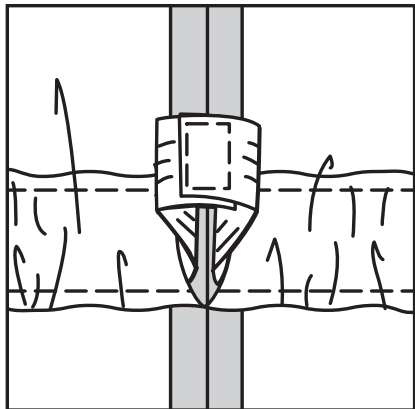


FINISHING

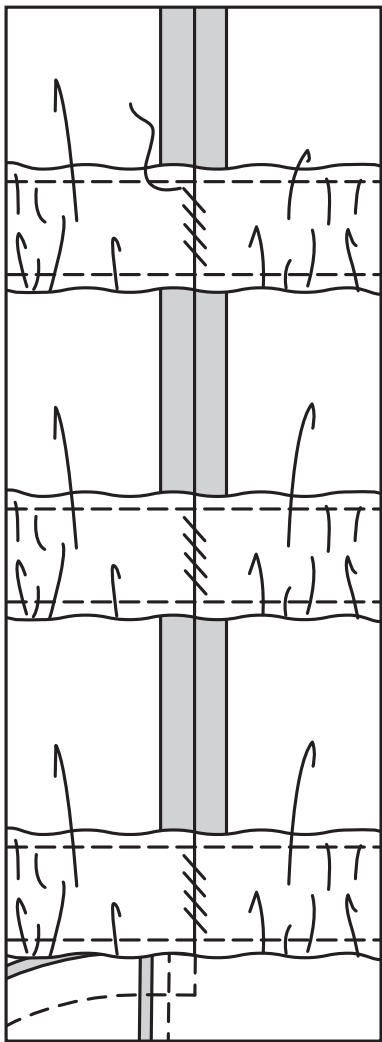
22. Cut three pieces of elastic the length of **GUIDE FOR ELASTIC (10)**. Insert elastic through openings in front and back casings. Overlap ends and hold with a safety pin. Try on garment and adjust to fit if necessary.



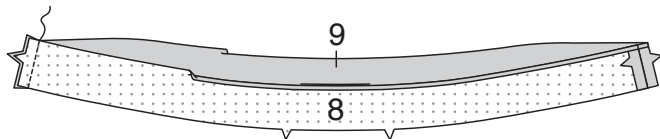
23. Stitch ends of elastic together securely.



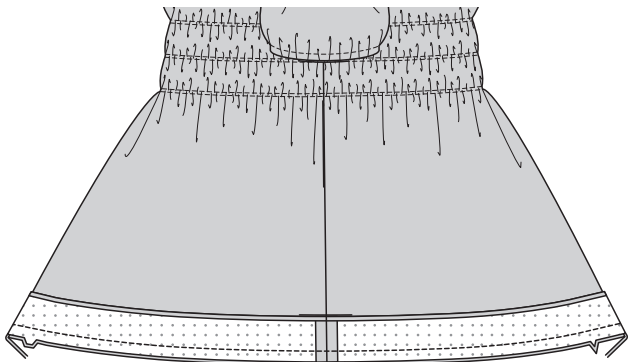
24. SLIPSTITCH opening closed in casing. Distribute fullness evenly. **TIP** - To secure elastic so it won't twist in wearing, stitch through all thicknesses of casing in the groove of each seam.



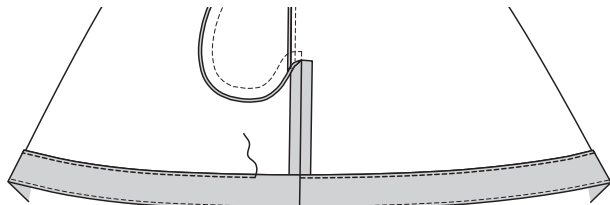
25. VIEW A- With **RIGHT** sides together, stitch ends of **FRONT HEM FACING (8)** and **BACK HEM FACING (9)** at sides. Press under 1/4"(6mm) on unnotched edge of facing.



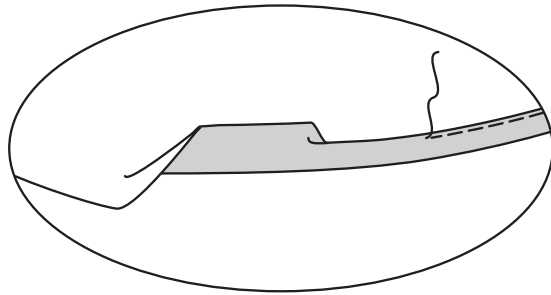
26. On **OUTSIDE**, pin facing to lower edge of dress matching notches. Stitch. **TRIM SEAM.**



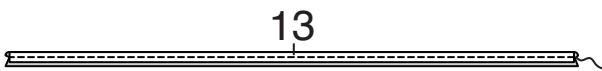
27. UNDERSTITCH facing. Turn facing to **INSIDE**, press. **EDGESTITCH** pressed edge of facing.



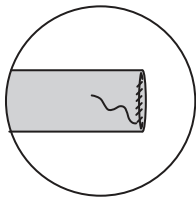
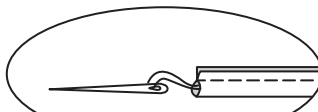
28. VIEW B- Make a 5/8"(1.5cm) narrow hem at lower edge of garment.



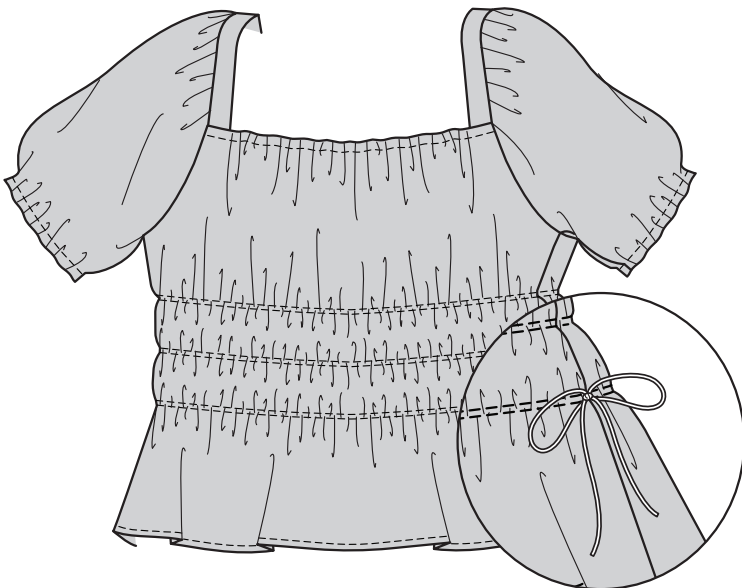
29. Fold **TIE END (13)** in half, lengthwise, with **RIGHT** sides together. Stitch a scant 1/4" (6mm) from fold edge, stretching strap while stitching.



30. With a needle, attach a strong thread to one end of strap. Draw needle eye forward, through fold, turning strap **RIGHT** side out. **SLIPSTITCH** ends of tie closed.



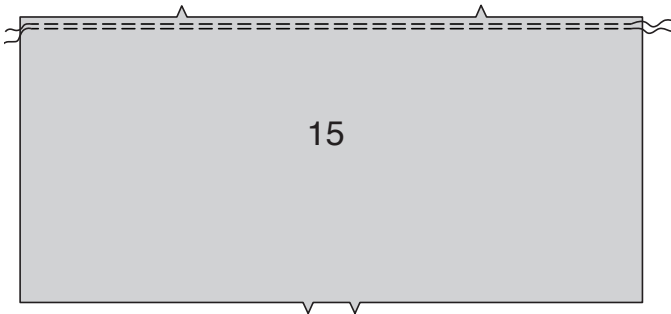
31. Make tie end into a bow. On **OUTSIDE**, **TACK** bow to **LEFT** side of top as shown on front of envelope.



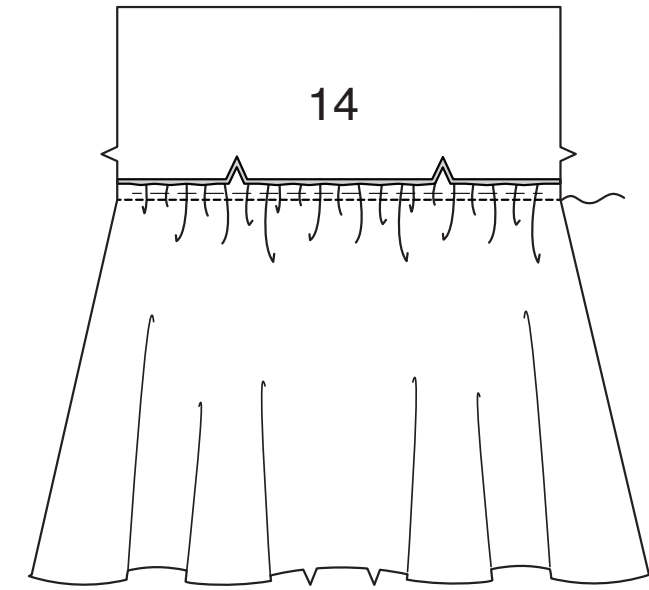
SKIRT C

FRONT AND BACK

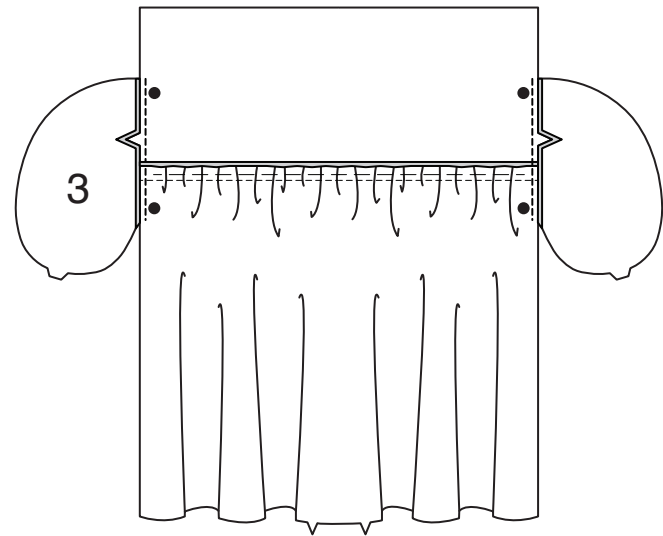
1. **GATHER** upper edge of FRONT AND BACK (15) sections between seam allowances.



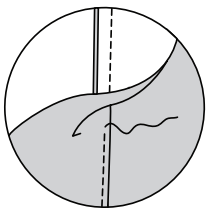
2. With **RIGHT** sides together, pin each front and back section to lower edge of one **YOKE FRONT AND BACK** (14). Adjust gathers to fit. Baste. Stitch. Press seam up.



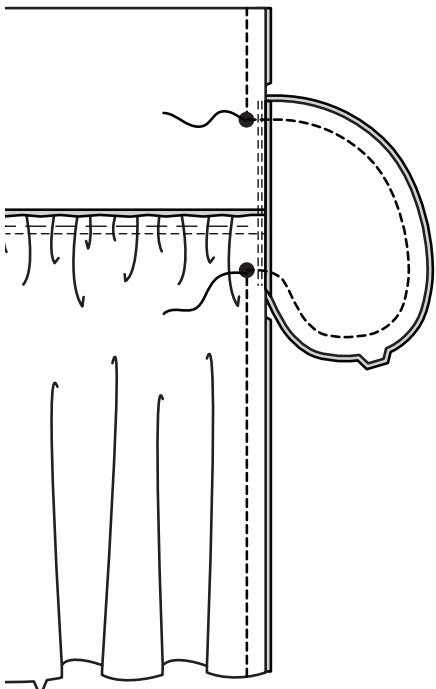
3. Stitch one **POCKET** (3) section to front and back at each side in a 1/4"(6mm) seam. Press seams toward pockets.



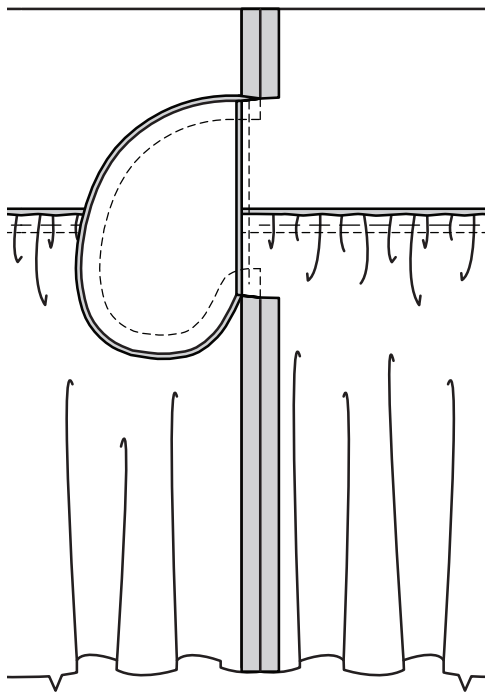
4. **UNDERSTITCH** front pocket.



5. Stitch front and back together at sides, leaving open between large dots. Stitch pocket edges together to side seams. Clip back seam allowances above and below pockets.

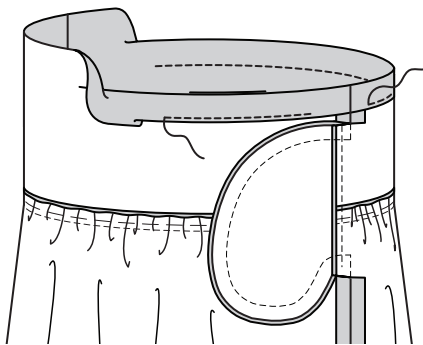


6. Turn pockets toward front along seamlines; press.

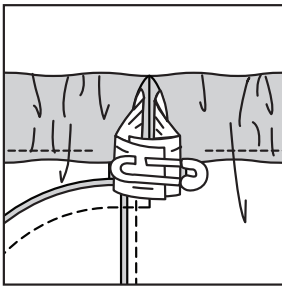


CASING

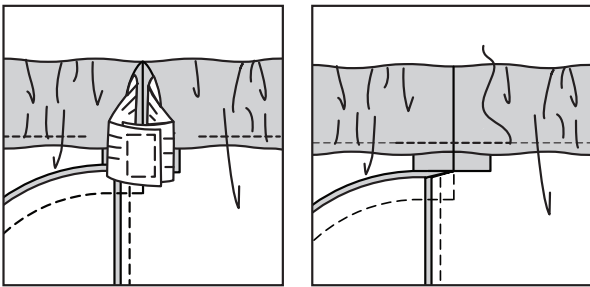
7. Press 1-1/2" (3.8cm) on upper edge to **INSIDE**, forming casing. Press under 1/4" (6mm) on raw edge. Stitch close to lower edge of casing, leaving an opening to insert elastic.



8. Cut a piece of elastic to fit waist, plus 1" (2.5cm). Insert elastic through casing. Overlap ends and hold with a safety pin. Try on garment and adjust to fit.

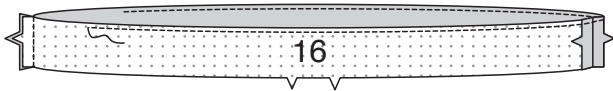


9. Stitch ends of elastic together securely. Stitch opening closed. Distribute fullness evenly. Remove basting. **TIP**-To secure elastic so it won't twist in wearing, stitch through all thicknesses of casing in the groove of each seam.

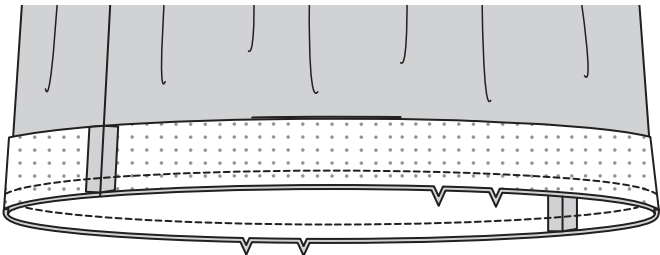


FINISHING

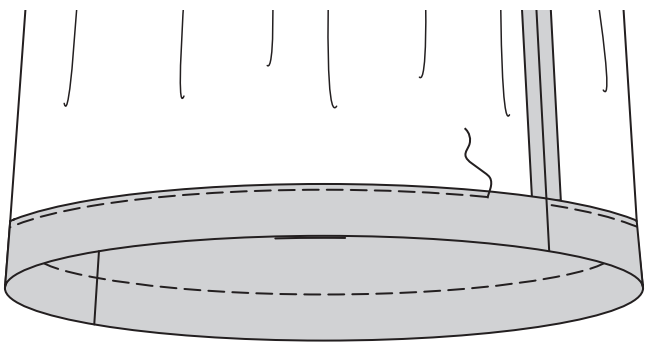
10. With **RIGHT** sides together, stitch **HEM FACING** (16) sections together at sides. **FINISH** unnotched edge of facing.



11. With **RIGHT** sides together, pin facing to lower edge of skirt, matching notches. Stitch. **TRIM SEAM**.



12. Turn facing to **INSIDE**, press. Baste 1/4"(6mm) from finished edge of facing.



13. On **OUTSIDE**, **TOPSTITCH** as basted.

