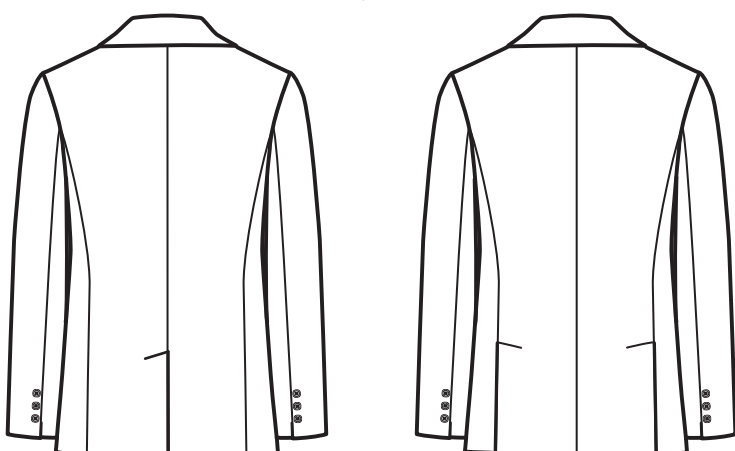


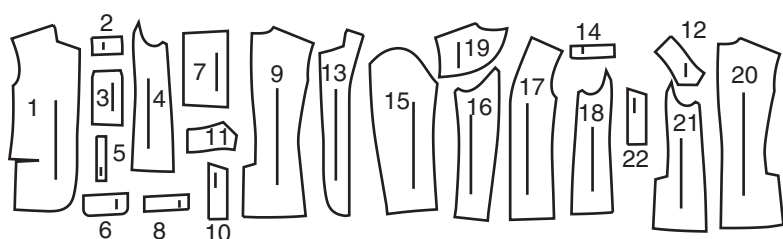
A,B



A

B

22 PATTERN PIECES



- 1 Front-A,B
- 2 Upper Welt-A,B
- 3 Upper Pocket-A,B
- 4 Side Front and Back-A
- 5 Lower Welt-A,B
- 6 Flap-A,B
- 7 Pocket-A,B
- 8 Lower Pocket Facing-A,B
- 9 Back-A
- 10 Back Facing-A
- 11 Upper Collar-A,B
- 12 Under Collar-A,B
- 13 Front Facing-A,B
- 14 Lower Front Facing-A,B
- 15 Upper Sleeve-A,B
- 16 Under Sleeve-A,B
- 17 Front Lining-A,B
- 18 Side Lining-A,B
- 19 Upper Back Facing-A,B
- 20 Back -B
- 21 Side Front and Back-B
- 22 Side Back Facing-B

**PATTERN MARKINGS**

- GRAINLINE:** Place on straight grain of fabric, parallel to selvage or fold.
- FOLDLINE:** Place line on fold of fabric.
- BUTTONHOLE MARKING:** Indicates exact length and placement of buttonholes.
- BUTTON MARKING:** Indicates button placement.
- NOTCHES AND SYMBOLS:** For matching seams and construction details.
- Indicates the Bustline, Waistline, Hip and/or Biceps. Measurements refer to circumference of Finished Garment (Body Measurement + Wearing Ease + Design Ease). Adjust pattern if necessary. The measurement excludes pleats, tucks, darts and seam allowances.
- SEAM ALLOWANCE:** 5/8" (1.5cm) included unless otherwise indicated, but not printed on tissue.

**ADJUST IF NECESSARY**

- Lengthen or Shorten at adjustment lines (==) or where indicated on pattern. If substantial length is added, you may need to purchase additional fabric.
- TO SHORTEN:** Crease along adjustment line. Make a fold half the amount needed. Tape in place.
- TO LENGTHEN:** Slash between adjustment lines. Spread amount as needed, keeping edges parallel. Tape over paper.
- When Alteration lines are not on tissue, lengthen or shorten at lower edge.

**SHRINK FABRIC** if not labeled pre-shrunk. Press.

**CIRCLE LAYOUT** for View, Size, Fabric Width.

Use **WITH NAP** layout for fabrics with one-way designs, nap, pile or surface shading. Because most knits have surface shading, a with nap layout is used.

For **DOUBLE THICKNESS (WITH FOLD)** - fold fabric with right sides together.

**\* DOUBLE THICKNESS (WITHOUT FOLD)** - For fabrics with nap, fold fabric crosswise, right sides together. Mark as shown. Cut along crosswise fold of fabric (A). Turn upper layer 180° so arrows go in same direction and place over lower layer, right sides together (B).

For **SINGLE THICKNESS** - place fabric right side up. (For Fur Pile fabrics, place pile side down.)

**CUTTING AND MARKING**

★ Cut other pieces first, allowing enough fabric to cut this piece. Open fabric. For "Cut 1" pieces, cut piece once on single layer of fabric with piece face up on right side of fabric.

Pattern may have cutting lines for several sizes. Select the proper cutting line or pattern pieces for your size.

Before **CUTTING** place all pieces on fabric according to layout. Pin. (**Layouts show approximate position of pattern pieces; position may vary according to your pattern size.**) Cut **ACCURATELY**, cutting notches outward.

Before removing pattern, **TRANSFER MARKINGS** and lines of construction to Wrong Side of fabric, using the Pin and Chalk Pencil method or Tracing Paper and Dressmaker Wheel. Markings needed on right side of fabric should be thread traced.

**NOTE:** Broken-line boxes (a! b! c!) in layouts represent pieces cut by measurements provided.

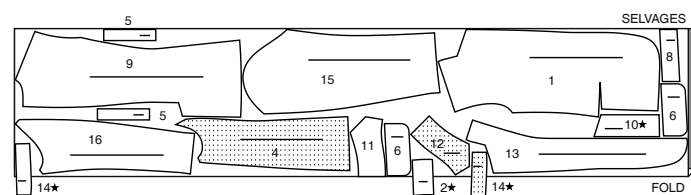
**CUTTING LAYOUTS**

RIGHT SIDE OF PATTERN	WRONG SIDE OF PATTERN	RIGHT SIDE OF FABRIC	WRONG SIDE OF FABRIC
-----------------------	-----------------------	----------------------	----------------------

**BLAZER A**

USE PIECES: 1 2 4 5 6 8 9 10 11 12 13 14 15 16

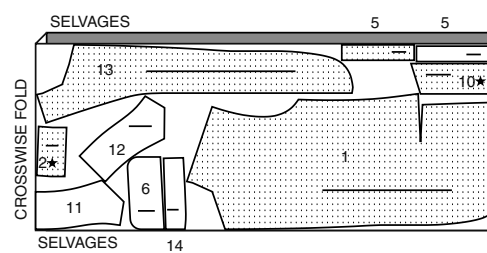
45" (115 CM)  
WITH NAP  
SIZES XS-S-M-L



**INTERFACING A**

USE PIECES: 1 2 5 6 10 11 12 13 14

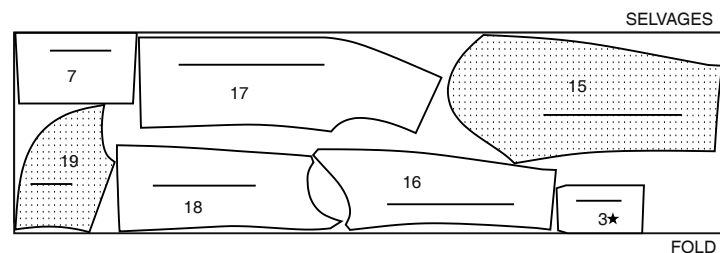
20" (51 CM)  
WITHOUT NAP  
ALL SIZES



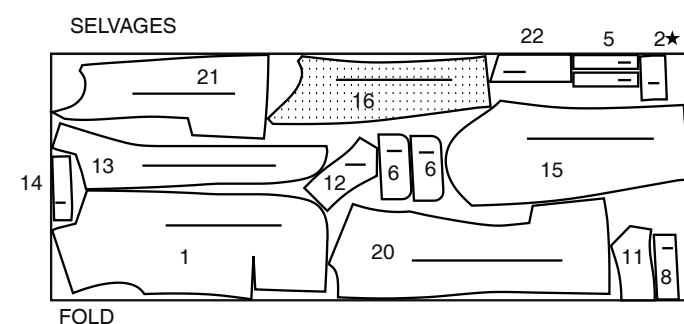
**LINING A,B**

USE PIECES: 3 7 15 16 17 18 19

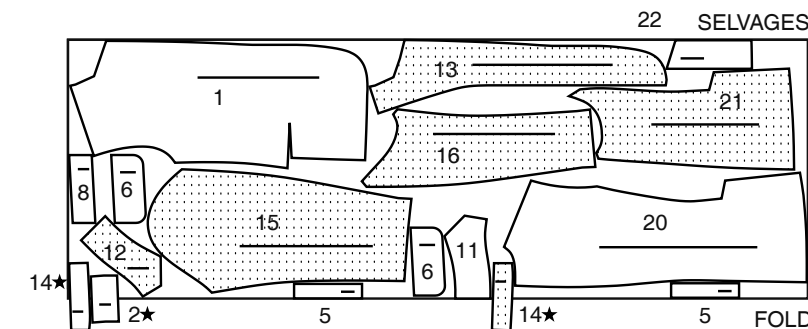
45" (115 CM)  
WITHOUT NAP  
ALL SIZES



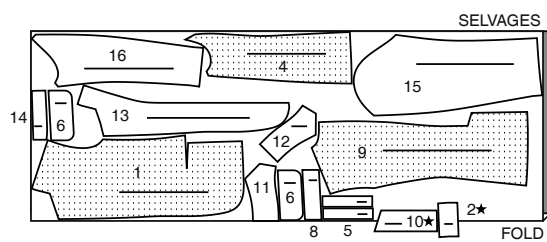
60" (150 CM)  
WITH NAP  
SIZES XS-S-M-L



60" (150 CM)  
WITH NAP  
SIZES XL-XXL



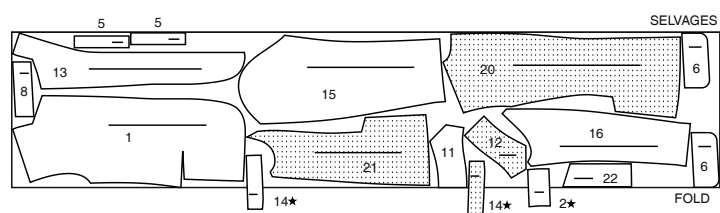
60" (150 CM)  
WITH NAP  
SIZES XS-S-M-L



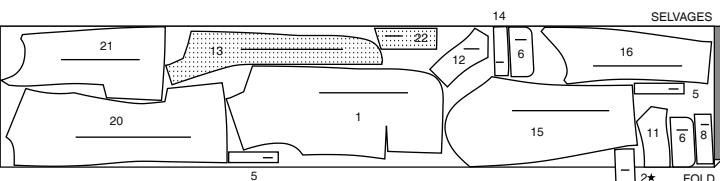
**BLAZER B**

USE PIECES: 1 2 5 6 8 11 12 13 14 15 16 20 21 22

45" (115 CM)  
WITH NAP  
SIZES XS-S-M-L



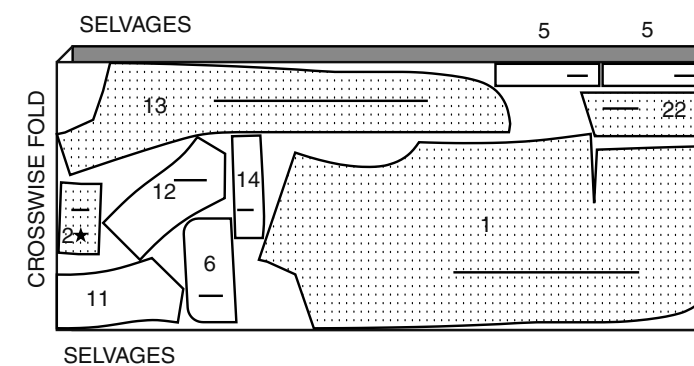
45" (115 CM)  
WITH NAP  
SIZES XL-XXL



**INTERFACING B**

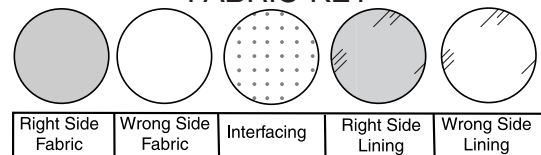
USE PIECES: 1 2 5 6 11 12 13 14 22

20" (51 CM)  
WITHOUT NAP  
ALL SIZES



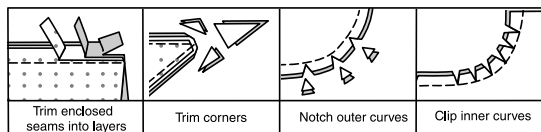
**SEWING INFORMATION**

**FABRIC KEY**



**SEAM ALLOWANCES**

Use 5/8" (1.5cm) seam allowances unless otherwise indicated.



**PIN AND FIT**

Pin or baste seams, **RIGHT SIDE TOGETHER**, matching notches. Fit garment before stitching major seams.

**PRESS**

Press seam allowances flat; then open unless otherwise stated. Clip where necessary so they lie flat.

**GLOSSARY**

Sewing methods in **BOLD TYPE** have Sewing Tutorial Video available. Scan **QR CODE** to watch videos:

**EASE/GATHER** – See **Gathering**: “sewing two row gathers” video.

**EDGESTITCH** – See **Machine Stitches**: “how to edgestitch” video.

**FINISH** – See **Seams**: “how to finish seam allowances” video.

**NARROW HEM** – See **Hems**: “sewing narrow hems” video.

**REINFORCE SEAMS** – See **Machine Stitches**: “how to reinforce seams” video.

**SLIPSTITCH** – See **Hand Stitching**: “how to slip stitch” video.

**STAYSTITCH** – See **Machine Stitches**: “how to do stay-stitching” video.

**TRIM SEAM** – See **Seams**: “How to Sew: Trim, Clip, and Layer Seams” video.

**UNDERSTITCH** – See **Machine Stitches**: “how to understitch” video.

SEWING TUTORIALS



Build your skills viewing short, easy-to-follow videos at [simplicity.com/sewingtutorials](http://simplicity.com/sewingtutorials)

**PATTERN PIECES WILL BE IDENTIFIED BY NUMBERS THE FIRST TIME THEY ARE USED.**

**STITCH SEAMS WITH RIGHT SIDES TOGETHER UNLESS OTHERWISE STATED.**

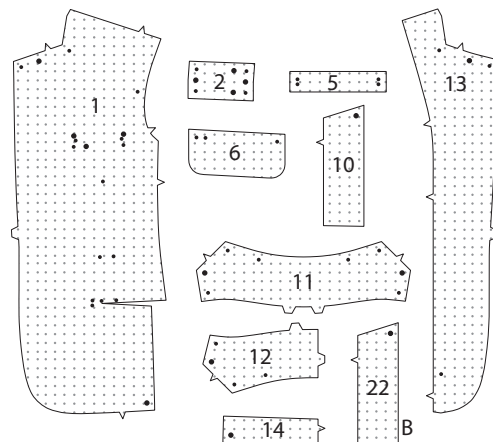
**ENCASE** - To encase, slip raw edge of seam allowances between the folds of double fold bias tape, placing the raw edge against the center crease and the wider folded edge of the tape on the **WRONG** side of the seam allowance, turning under ends at edges. Stitch close to the inner folded edge of the tape from the **RIGHT** side, being sure to catch in the folded edge of tape on the **WRONG** side.

**JACKET A, B**

**Note:** The first view mentioned will be shown, unless otherwise mentioned.

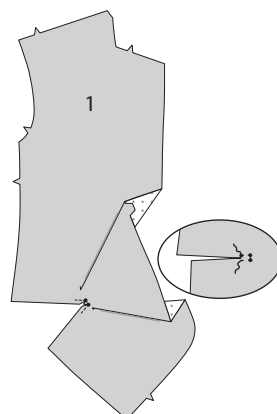
**INTERFACING**

**1.** Fuse **INTERFACING** to **WRONG** side of each matching **FABRIC** section, following manufacturer's instructions.



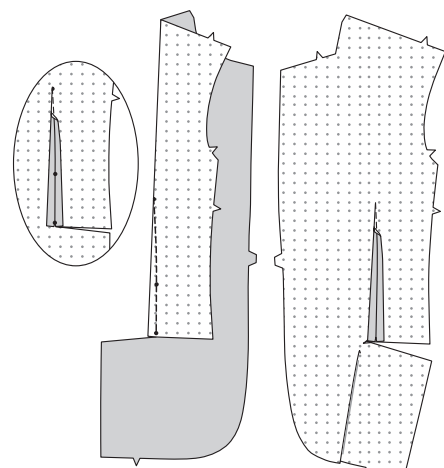
**FRONT**

**2.** To reinforce inner corner of **FRONT** (1) for lower pocket, stitch along lower stitching lines, pivoting at small dots, as shown. Slash along slash line, clipping diagonally to small dots.

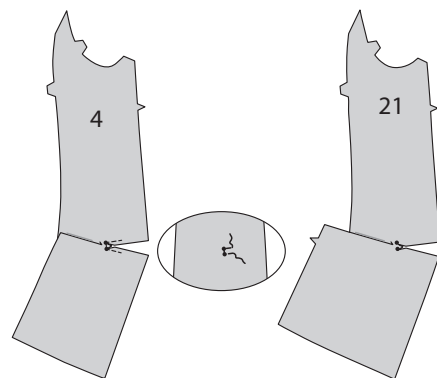


**3.** To make dart in front, with **RIGHT** sides together, fold the fabric through the center of the dart, bringing broken lines and small dots together. Stitch along broken lines from wide end to point. Slash along fold of dart as far as possible. Press open, pressing point toward center.

**TIP** – To prevent a “bubble” at the point, make the last few stitches right on the fold and leave the thread ends long enough to tie a knot. **DO NOT** back-stitch at point.

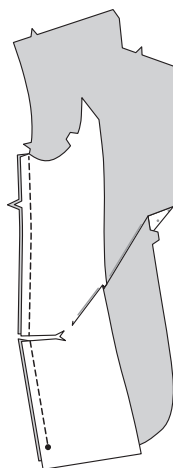


**4. REINFORCE** inner corner of **SIDE FRONT AND BACK** (4 or 21). Slash along slash line, clipping diagonally to corners.



**5.** Pin side front and back to side edge of front, **RIGHT** sides together, matching notches, large dots, stitching lines and slashed edges. Stitch above large dots, breaking stitching at slashed edges.

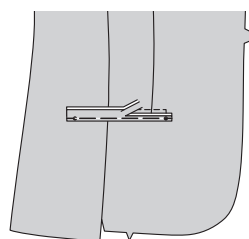
**LOWER POCKET**



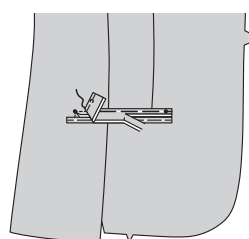
**6.** With **WRONG** sides together, fold **LOWER WELT** (5) in half lengthwise, matching small dots, having raw edges even. Baste raw edges together.



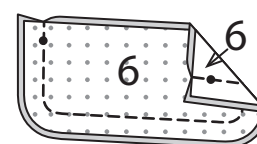
**7.** For each front, pin one lower welt to **OUTSIDE** of front, placing seamline on welt along lower stitching line on jacket, matching small dots. Baste along seamline between small dots. Trim seam allowance on welt to a scant 1/4" (6mm), being careful not to cut jacket.



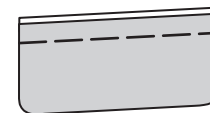
**8.** Pin remaining lower welts to fronts along upper stitching lines in same manner. Baste along seamline between small dots. Trim seam allowance on welt to a scant 1/4" (6mm), being careful not to cut jacket.



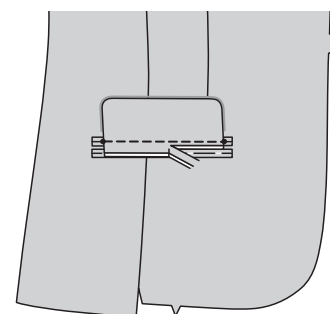
**9.** For each flap, pin an interfaced **FLAP** (6) section to one without interfacing, **RIGHT** sides together, matching small dots. Stitch, leaving upper edge open. **TRIM SEAM.**



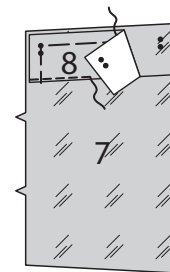
**10.** Turn flap **RIGHT** side out. Press. Baste raw edges together.



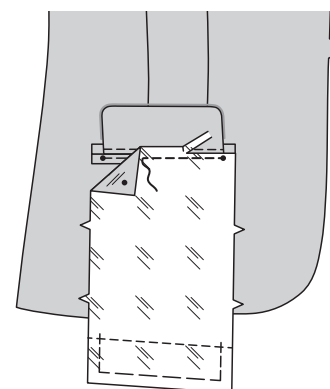
**11.** Pin flap to front, over upper welt, **RIGHT** sides together, matching small dots, placing flap seamline along upper stitching line. Stitch along seamline between small dots. Trim seam allowance of flap to a scant 1/4" (6mm), being careful not to cut welt or jacket.



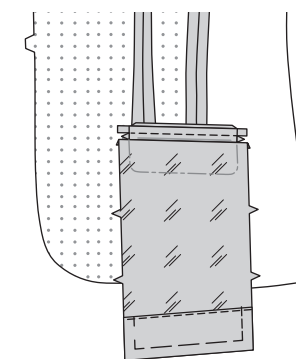
**12.** Pin **WRONG** side of **LOWER POCKET FACING** (8) to **RIGHT** side of **LOWER POCKET** (7), matching double set of small dots, having upper edges even and lower edge of facing along placement line. Baste side and upper edges. Stitch close to lower edge of facing using a straight or zigzag stitch.



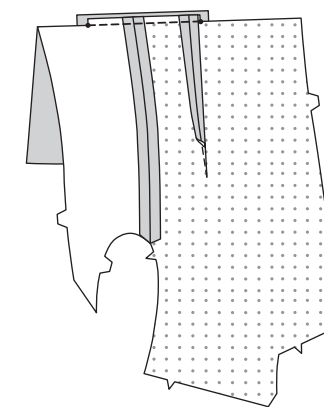
**13.** Pin lower edge of pocket to front over lower welt, **RIGHT** sides together, placing pocket seamline along lower stitching line on jacket, matching small dots. Stitch along stitching line between small dots. Trim seam allowance on pocket to a scant 1/4" (6mm), being careful not to cut flap welt, or jacket.



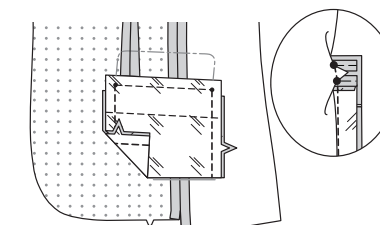
**14.** Turn pocket and triangular ends to **INSIDE**, pulling ends of welts between triangular ends, as shown, turning flap down.



**15.** Fold upper edge of jacket to **OUTSIDE** along upper stitching line. Pin upper edge of pocket to extended 1/4" (6mm) seam allowance, matching upper small dots, placing seamline on pocket along upper stitching line. Stitch along stitching line along previous stitching, through all layers. Press seam toward jacket.

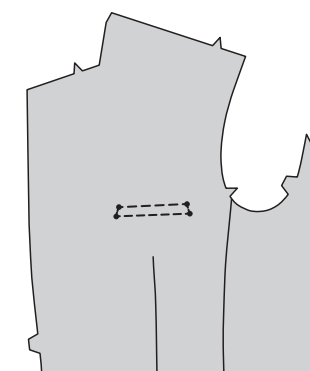


**16.** Stitch side edges of pocket together, catching ends of welts and triangular ends, keeping front and flap free.

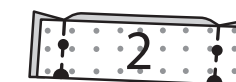


**UPPER POCKET**

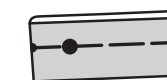
**17.** Reinforce left front along upper stitching lines, pivoting at small dots, as shown.



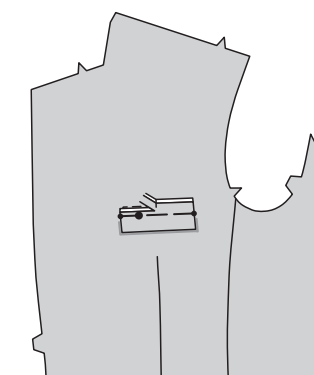
**18.** With **RIGHT** sides together, fold **UPPER WELT** (2) along foldline, having raw edges even. Stitch ends. **TRIM SEAM.**



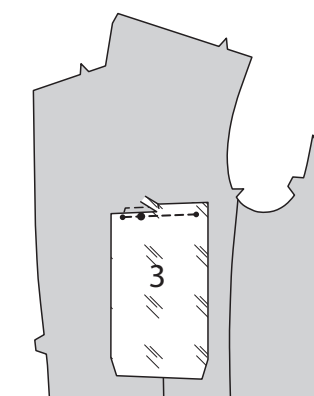
**19.** Turn **RIGHT** sides out. Press. Baste raw edges together.



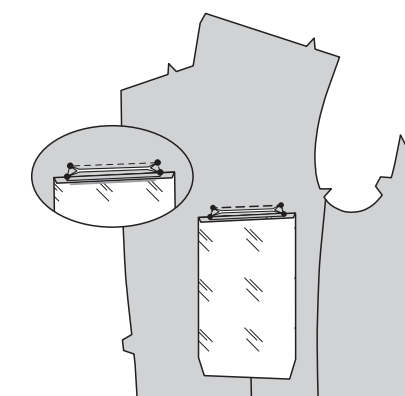
**20.** Pin welt to **OUTSIDE** of left front, matching large and small dots, placing seamline on welt along lower stitching line. Baste along seamline between small dots. Trim seam allowance on welt to a scant 1/4" (6mm), being careful not to cut jacket.



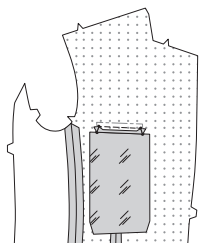
**21.** Pin lower edge of **UPPER POCKET** (3) to left front, over welt, matching large and small dots, placing seamline on upper pocket along lower stitching line. Stitch between small dots. Trim seam allowance on pocket to a scant 1/4" (6mm), being careful not to cut jacket or welt.



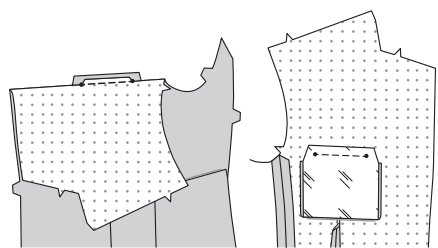
**22.** Slash left front along slash line between stitching lines clipping diagonally to small dots, being careful not to cut welt or pocket.



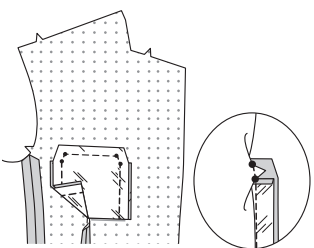
**23.** Turn pocket and triangular ends to **INSIDE**, turning welt up. Press.



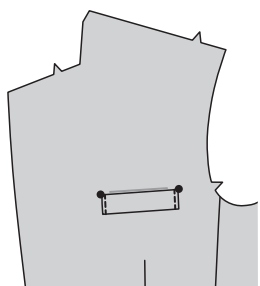
**24.** Fold upper edge of jacket to **OUTSIDE** along upper stitching line. Pin upper edge of upper pocket to extended 1/4" (6mm) seam allowance, matching upper small dots, placing seam line on pocket along upper stitching line, keeping welt free. Stitch between small dots. Press seam toward jacket.



**25.** Stitch side edges of upper pocket together, catching triangular ends, keeping front free.



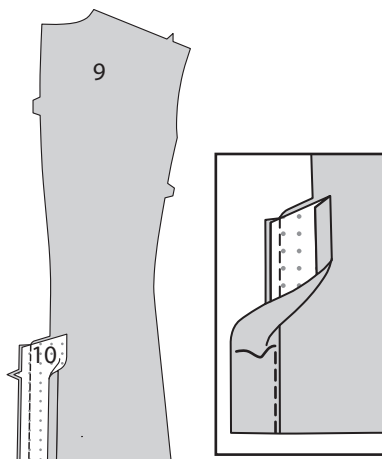
**26.** On **OUTSIDE**, pin welt in place matching large dots. **EDGESTITCH** close to ends of welt.



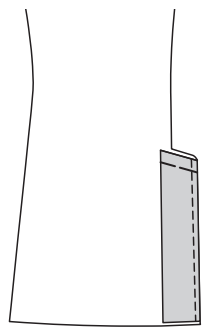
**VIEW A: BACK AND REMAINING SEAMS**

**27.** Turn under 5/8" (1.5cm) seam allowance on long, unnotched edge of **LOWER BACK FACING** (10). Press.

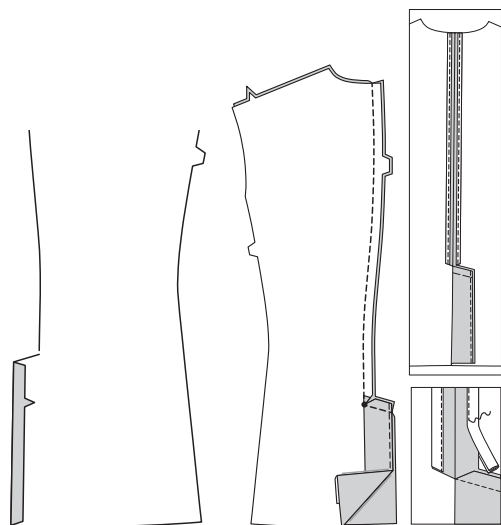
Pin lower back facing to right **BACK** (9), **RIGHT** sides together, matching notches. Stitch notched edge. **TRIM SEAM**. To **UNDERSTITCH**, press facing and seam away from jacket and stitch through facing and seam allowances close to seam.



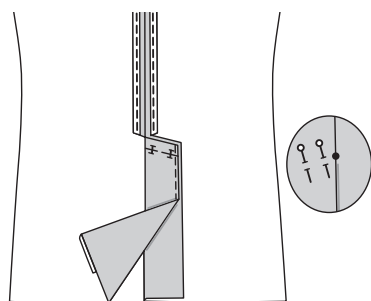
**28.** Turn facing to inside. Baste upper edge.



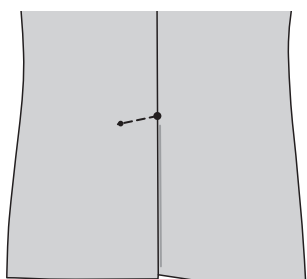
**29.** Turn under 5/8" (1.5cm) seam allowance on notched edge of left back extension. Press. Pin back sections, **RIGHT** sides together, matching center back notches and large dots. Stitch center back seam, pivoting at large dot, and across upper edge of extensions. Clip right back seam allowance diagonally to large dot. Press seam allowance open above large dot and **ENCASE** raw edges.



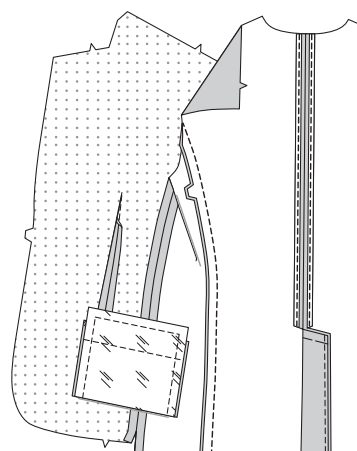
**30.** Turn extensions towards left back, folding left back extension along foldline. Press. Pin upper edge of extension in place with pins on the **OUTSIDE**.



**31.** On **OUTSIDE**, stitch left back along stitching line through all thicknesses.

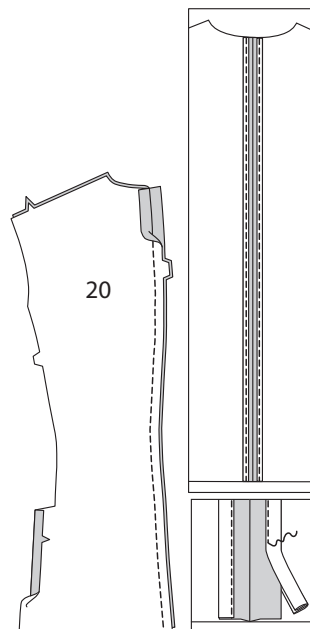


**32.** Stitch back to side front and back at sides. Turn seam toward side front and back.

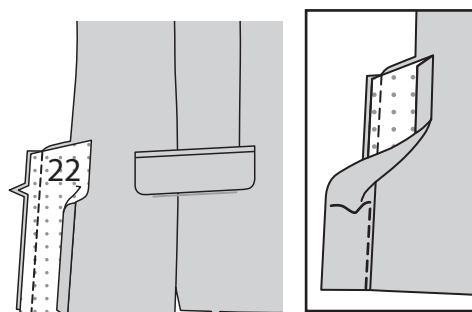


**VIEW B: BACK AND REMAINING SEAMS**

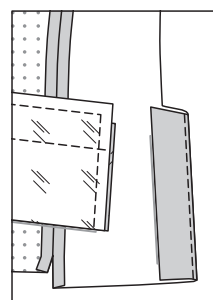
**33.** Turn under 5/8" (1.5cm) seam allowance on long single notched edge of **BACK** (20) extensions. Press. Stitch center back seam matching notches. Press seam allowances open and **ENCASE** raw edges.



**34.** Turn under 5/8" (1.5cm) seam allowance on long unnotched edge of **SIDE BACK FACING** (22) sections. Press. Pin side back facing to side front and back extension, **RIGHT** sides together, matching notches. Stitch. **UNDERSTITCH** facing.

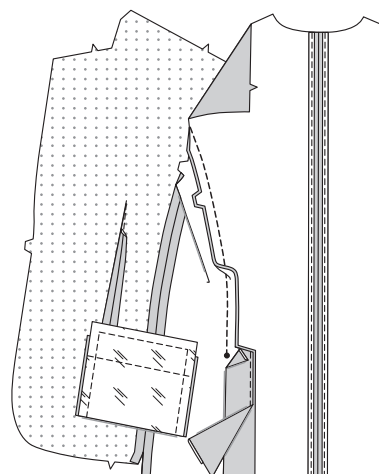


**35.** Turn facing to **INSIDE**. Press.



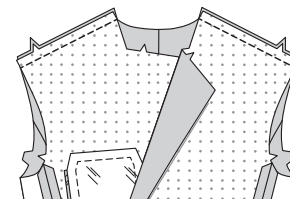
**36.** Pin side front and back to side edges of back, **RIGHT** sides together, matching notches and large dots. Stitch seam to large dot, keeping side back facing free.

Turn side back seam and extensions toward back, folding back extension along foldline. Press.



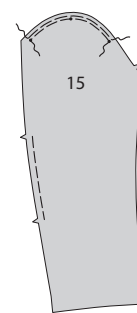
**SLEEVE**

**37.** Stitch front to back at shoulders.

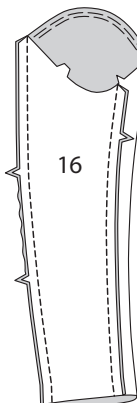


**38.** To **EASE** cap of **UPPER SLEEVE** (15), machine-baste along 5/8" (1.5cm) seamline between outer small dots. For greater control, stitch a second row of machine basting stitches 1/2" (1.3cm) away in seam allowance.

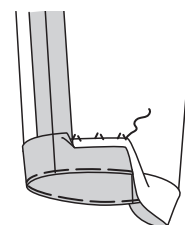
Ease back edge of upper sleeve between notches.



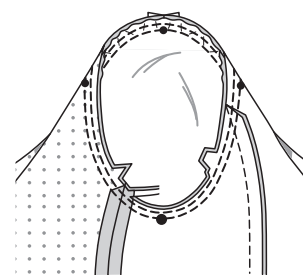
**39.** Pin **UNDER SLEEVE** (16) to upper sleeve at back edge, matching notches. Adjust ease. Stitch. Stitch remaining sleeve seam.



**40.** Turn up sleeve hem. Baste close to fold. Sew hem in place. Press.

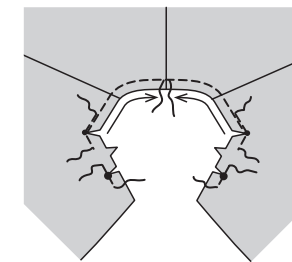


**41.** With **RIGHT** sides together, pin sleeve into armhole, placing center small dot at shoulder seam, matching notches, large dots, and remaining small dots. Adjust ease. Baste. Stitch. Stitch again 1/4" (6mm) away in seam allowance. Trim seam close to stitching below notches. Press seam toward sleeve.

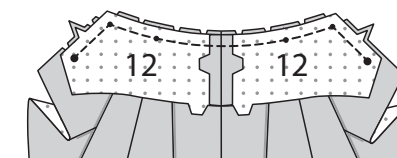


**COLLAR**

**42.** To **REINFORCE** neck edge of front, stitch along 5/8" (1.5cm) seamline between large dot and small dot at inner corner, pivoting at corner, continuing stitching for 1" (2.5cm) beyond dots. Clip to small dot at inner corner. Clip to large dot. To **STAYSTITCH**, stitch 1/2" (1.3cm) from cut edge between small dots in direction of arrows.

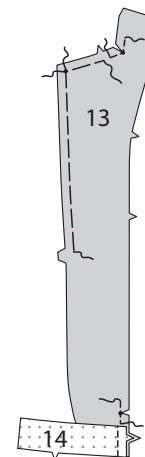


**43.** Stitch center back seam in **UNDER COLLAR** (12). Pin under collar to neck edge, matching center backs, small and large dots, placing inner small dot at shoulder seam, clipping neck edge of jacket where necessary. Stitch between large dots, as shown. **TRIM SEAM**. Press open.

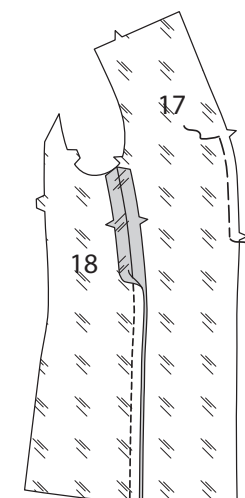


**FACING AND UPPER COLLAR**

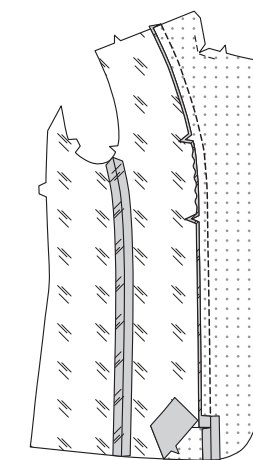
**44.** Ease front edge of **FRONT FACING** (13) between double notch and small dot. Ease upper edge of front facing between large dot and small dot at outer corner. Reinforce neck edge of front facing through small dot at inner corner to large dot. Clip to small dot. **REINFORCE** lower edge of front facing through small dot. Clip to small dot. Stitch **LOWER FRONT FACING** (14) to lower edge of front facing, matching notches.



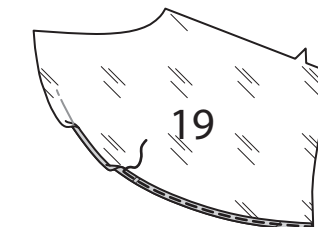
**45.** Ease front edge of **FRONT LINING** (17) between notches. Pin **SIDE LINING** (18) to front lining matching notches. Stitch.



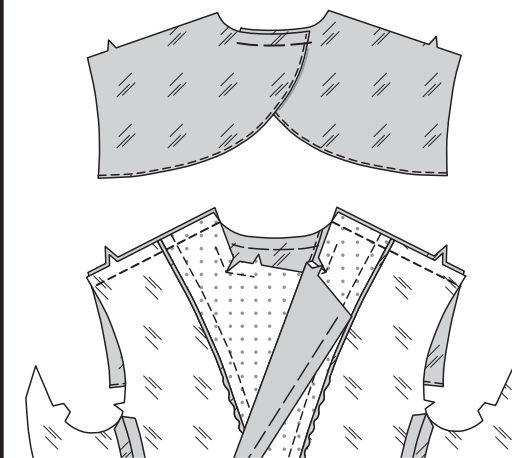
**46.** Pin front facing to front lining matching notches and small dots. Adjust ease. Stitch, ending at small dot. Press seam toward lining above clip.



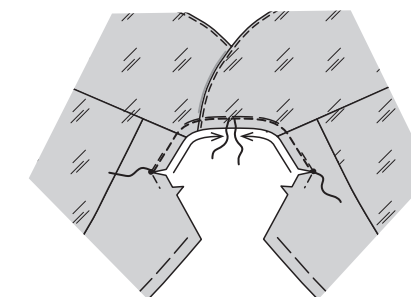
**47.** To make **NARROW HEM**, press under 3/8" (1cm) hem on lower edge of **UPPER BACK FACING** (19). Press. Tuck under raw edge to meet crease. Press. Stitch close to inner pressed edge.



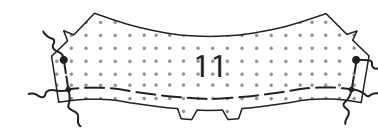
**48.** With **RIGHT** sides up, lap back facings as shown, matching center backs, with neck and shoulder edges even. Baste neck and shoulder edges together. Stitch back facing to front facing/lining at shoulders.



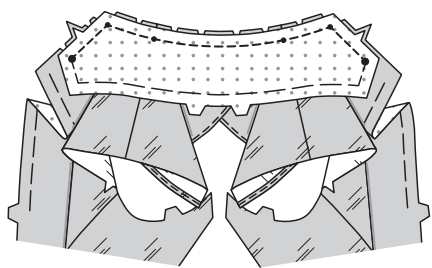
**49.** **STAYSTITCH** neck edge of facing between small dots.



**50.** Ease double notched edge of **UPPER COLLAR** (11) between small dots. Ease unnotched end of collar between small and large dots.



**51.** With RIGHT sides together, pin upper collar to neck edge of facing, matching center backs, single notches, large dots and small dots at corners, placing inner small dots at shoulder seams, clipping neck edge of facing to staystitching as needed. Stitch. Clip front facing to large dot. Press seam open.

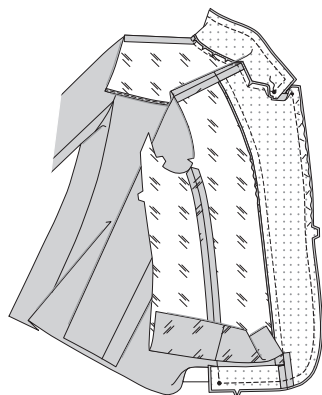


**ATTACHING LINING**

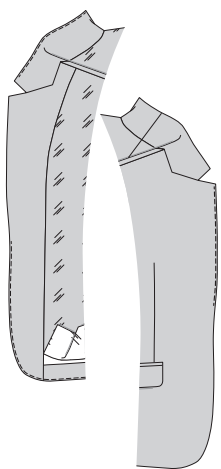
**52.** With RIGHT sides together, pin upper collar and facing to under collar and jacket along outer edges, matching notches, center backs, small and large dots. Baste collar edges together between large dots, easing upper collar to fit. Stitch between large dots.

Pin front and lower front facing to jacket, matching notches, and small and large dots. Baste, adjusting ease, keeping lining free.

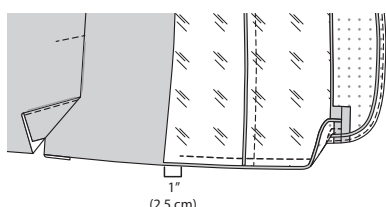
With RIGHT sides together, pin end of lower front facing to remainder of side front seam of side front and back, matching large dots. Stitch from large dots at neck to large dot on lower front facing; pivot at large dot and stitch across end of lower front facing and remainder of side front seam, keeping lining free.



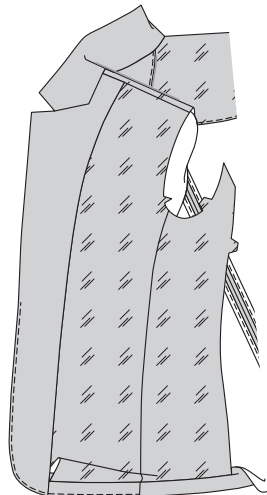
**53.** UNDERSTITCH front edge of facing below lapel. UNDERSTITCH front edge of jacket above lapel.



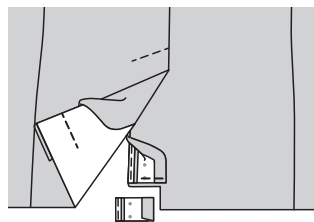
**View A**  
**54.** Pin lower edge of lining to lower front facing and side front and back matching side front seams. Stitch using 1/2" (1.3cm) seam, stopping 1" (2.5cm) from side back seamline.



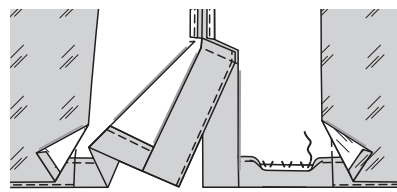
**55.** Turn facing to INSIDE. Press.



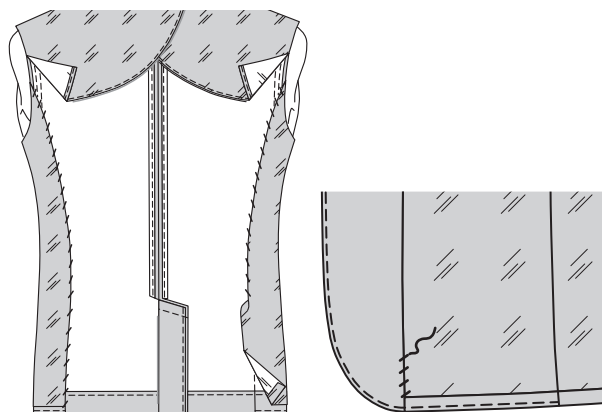
**56.** Turn lower edge of lower back facing to OUTSIDE. Turn back extension to OUTSIDE along foldline. With RIGHT sides together, stitch across extensions and facings 1-1/2" (3.8cm) above lower edges. Trim facing and extension, as shown.



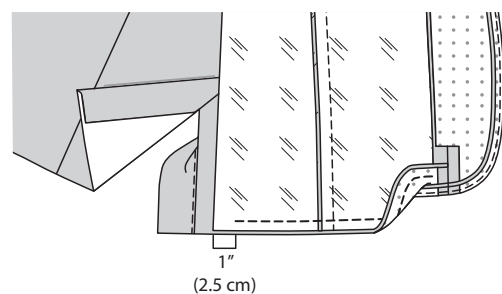
**57.** Turn facings and extensions to inside, turning up remainder of hem. Press. Extend lining to expose and FINISH raw edge of hem. Hand sew hem in place between side front seams and extensions, keeping lining free.



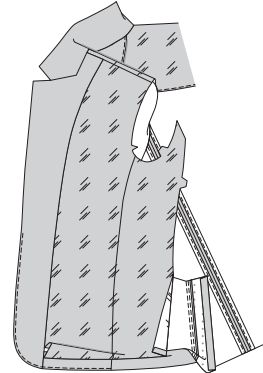
**58.** Turn down lining. Press. Turn under 5/8" (1.5cm) on side back edge of lining. Press. Pin pressed edge of lining over side back seam. SLIPSTITCH in place by sliding needle through folded edge, then picking up a thread of underneath fabric. SLIPSTITCH remainder of front lining over facing. NOTE: A pleat will form at lower edge for wearing ease.



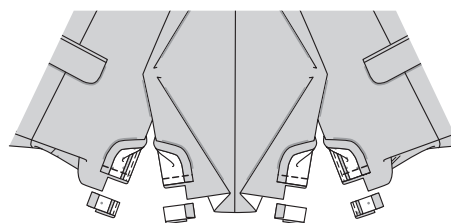
**View B**  
**59.** Open out side back facing at lower edge. Pin lower edge of lining to lower front facing and lower edge of side front and back matching side front seams. Stitch using 1/2" (1.3cm) seam, stopping 1" (2.5cm) from front facing seam and side back seamline.



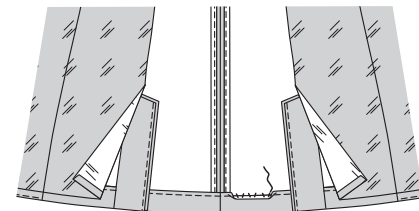
**60.** Turn facing to INSIDE. Press.



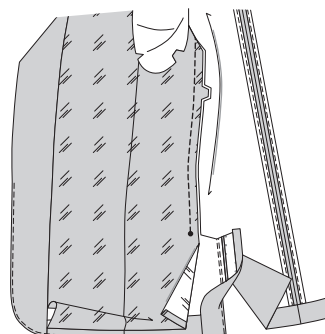
**61.** Turn lower edge of side back facings to OUTSIDE. Turn back extensions to OUTSIDE along foldline. With RIGHT sides together, stitch across extensions and facings 1-1/2" (3.8cm) above lower edges, keeping lining free. Trim facing and extension, as shown.



**62.** Turn facings and extensions to INSIDE, turning up remainder of hem. Press. Extend lining to expose and FINISH raw edge of hem. Hand sew back and side front and back hems in place.

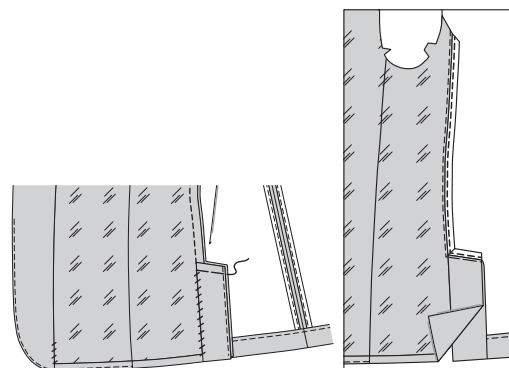


**63.** Turn down lining. Press. Open out side back facing. Pin side back seams of jacket and lining together. Stitch seam allowances only together to large dot over previous stitching.

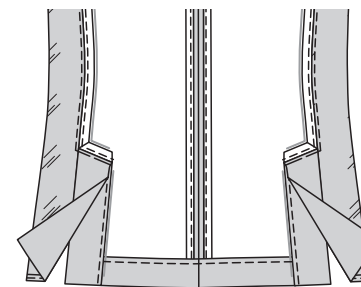


**64.** Turn down side back facing. SLIPSTITCH pressed edge of facing over side back edge of lining below dot. SLIPSTITCH remaining pressed edge of front lining over facing. Baste upper edge of extensions together.

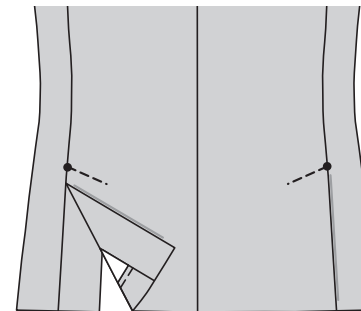
ENCASE side back seam allowances to large dot and across upper edge of extensions.



**65.** Turn extensions toward back, folding back extension along foldline. Pin upper edge of extensions to back placing seamline along stitching line. Baste.

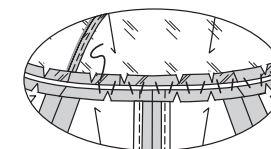


**66.** On OUTSIDE, stitch back along stitching line through all layers.



**FINISHING**

**67.** Open out back facing and loosely sew back neck seam allowances together.

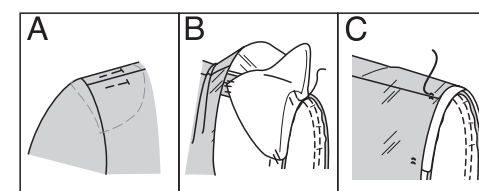


**68.** Turn back facing down. Try on jacket for shoulder pad placement.

A. Slip pad beneath facing and pin to jacket, extending outer edge about 5/8" (1.5cm) beyond armhole seam. Adjust to fit, as needed.

B. Lift facing. Tack pad to shoulder and armhole seam allowances, as shown.

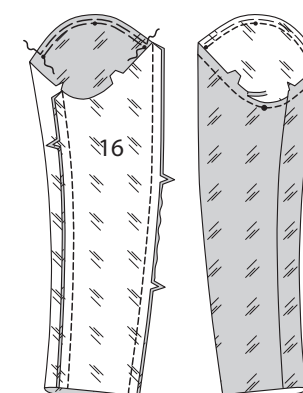
C. Turn down facing. Tack armhole edges.



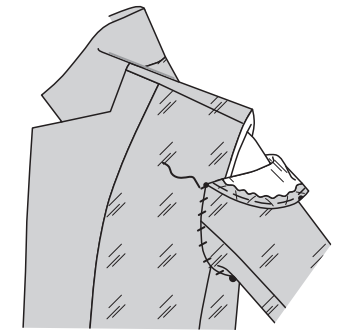
**SLEEVE LINING**

NOTE: If you haven't done so already, trim away 1" (2.5cm) from lower edge of Upper Sleeve LINING (15) and Under Sleeve LINING (16).

**69.** Prepare sleeve LINING in same manner as for sleeve, disregarding reference to hem. Machine stitch 5/8" (1.5cm) from raw armhole edge. Trim seam allowance on lower armhole between notches to 3/8" (1cm).



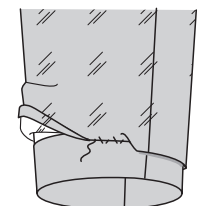
**70.** Slip sleeve lining over sleeve, WRONG sides together, placing center small dot at shoulder seam, matching sleeve seams, large dots and remaining small dots. Turn under sleeve lining along line of stitching, clipping underarm, where necessary. Pin to armhole matching seamlines. Adjust ease. Hand-sew in place.



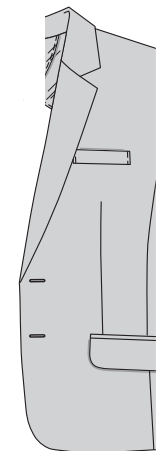
**71.** Turn under 5/8" (1.5cm) on lower edge of sleeve lining and place folded edge 5/8" (1.5cm) below raw edge of sleeve hem. SLIPSTITCH. NOTE: A pleat will form at lower edge for wearing ease.

**BUTTONHOLES AND BUTTONS**

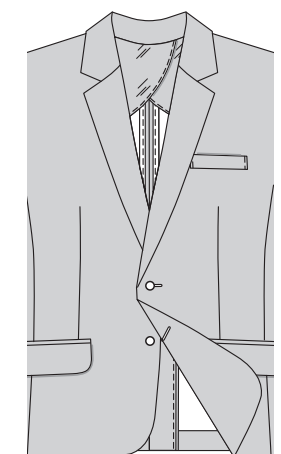
NOTE: Men's jacket is shown.



**72.** For Men, make buttonholes in left front at markings. For Women, make buttonholes in right front at markings.



**73.** Lap left front over right (for men) or right front over left (for women). Mark positions for buttons, using buttonholes as guides. Sew 3/4" (2cm) buttons at markings.



**74.** Sew 5/8" (1.5cm) buttons to upper sleeve at markings.

