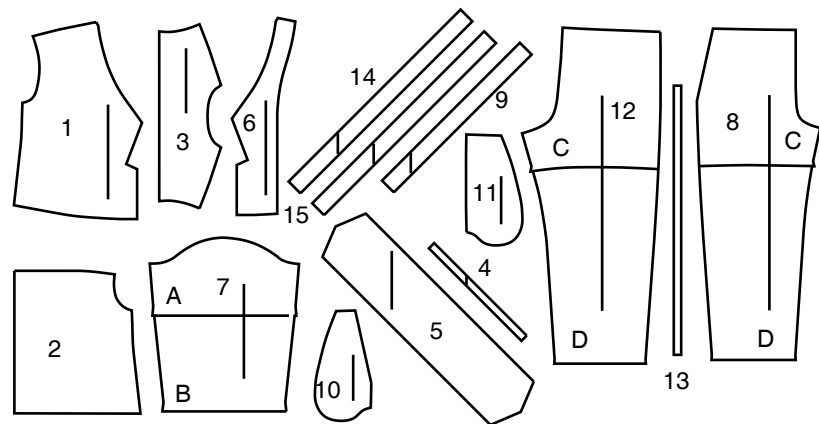


15 PATTERN PIECES

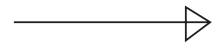


- 1 Front-A,B
2 Back-A,B
3 Yoke Back-A,B
4 Tie End-A,B
5 Collar-A,B
6 Front Facing-A,B
7 Sleeve-A,B
8 Front-C,D
9 Ruffle-C
10 Pocket Facing-C,D
11 Side Front and Pocket-C,D
12 Back-C,D
13 Elastic Guide for Waistline-C,D
14 Upper Ruffle-D
15 Lower Ruffle-D

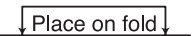
MISSES' SIZES						
	XS (4-6)	S (8-10)	M (12-14)	L (16-18)	XL (20-22)	
EUROPEAN	30-32	34-36	38-40	42-44	46-48	
FINISHED GARMENT MEASUREMENTS (Includes Design and Wearing Ease)						
C,D Hip	35	37	40½	44½	48½	Ins.
Width, lower edge						
Top A,B	19½	20	20½	21	21½	Ins.
Width, each leg						
Shorts C	21½	23	25	27½	30	Ins.
Pants D	17	18	19	20	21	"
Finished back length from base of neck						
Top A,B	19½	20	20½	21	21½	Ins.
Finished side length from waist						
Shorts C	14½	15	15½	16	16½	Ins.
Pants D	41½	42	42½	43	43½	"
WOMEN'S SIZES						
	1XL 20-22W	2XL 24-26W	3XL 28-30W	4XL 32-34W	5XL 36-38W	
EUROPEAN	42-44	46-48	50-52	54-56	58-60	
FINISHED GARMENT MEASUREMENTS (Includes Design and Wearing Ease)						
C,D Hip	49½	54	59	64	68	Ins.
Width, lower edge						
Top A,B	60	64½	69½	74½	78½	Ins.
Width, each leg						
Shorts C	30	31	34	37	40	Ins.
Pants D	21	22	23	24	25	"
Finished back length from base of neck						
Top A,B	23½	24	24½	25	25½	Ins.
Finished side length from waist						
Shorts C	16½	17	17½	18	18½	Ins.
Pants D	42½	43	43½	44	44½	"

"with nap **without nap

PATTERN MARKINGS



GRAINLINE: Place on straight grain of fabric, parallel to selvage or fold.



FOLDLINE: Place line on fold of fabric.



BUTTONHOLE MARKING: Indicates exact length and placement of buttonholes.



BUTTON MARKING: Indicates button placement.



NOTCHES AND SYMBOLS: For matching seams and construction details.



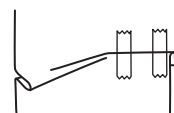
Indicates the Bustline, Waistline, Hip and/or Biceps. Measurements refer to circumference of Finished Garment (Body Measurement + Wearing Ease + Design Ease). Adjust pattern if necessary. The measurement excludes pleats, tucks, darts and seam allowances.

SEAM ALLOWANCE: 5/8" (1.5cm) included unless otherwise indicated, but not printed on tissue.

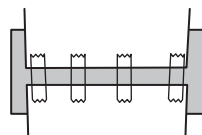
ADJUST IF NECESSARY

Lengthen or Shorten at adjustment lines (==) or where indicated on pattern. If substantial length is added, you may need to purchase additional fabric.

TO SHORTEN: Crease along adjustment line. Make a fold half the amount needed. Tape in place.



TO LENGTHEN: Slash between adjustment lines. Spread amount as needed, keeping edges parallel. Tape over paper.



When Alteration lines are not on tissue, lengthen or shorten at lower edge.

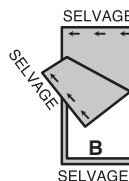
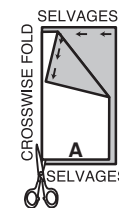
SHRINK FABRIC if not labeled pre-shrunk. Press.

CIRCLE LAYOUT for View, Size, Fabric Width.

Use **WITH NAP** layout for fabrics with one-way designs, nap, pile or surface shading. Because most knits have surface shading, a with nap layout is used.

For **DOUBLE THICKNESS (WITH FOLD)** - fold fabric with right sides together.

*** DOUBLE THICKNESS (WITHOUT FOLD)** - For fabrics with nap, fold fabric crosswise, right sides together. Mark as shown. Cut along crosswise fold of fabric (A). Turn upper layer 180° so arrows go in same direction and place over lower layer, right sides together (B).



For **SINGLE THICKNESS** - place fabric right side up. (For Fur Pile fabrics, place pile side down.)

CUTTING AND MARKING

★ Cut other pieces first, allowing enough fabric to cut this piece. Open fabric. For "Cut 1" pieces, cut piece once on single layer of fabric with piece face up on right side of fabric.

Pattern may have cutting lines for several sizes. Select the proper cutting line or pattern pieces for your size.

Before **CUTTING** place all pieces on fabric according to layout. Pin. (**Layouts show approximate position of pattern pieces; position may vary according to your pattern size.**) Cut **ACCURATELY**, cutting notches outward.

Before removing pattern, **TRANSFER MARKINGS** and lines of construction to Wrong Side of fabric, using the Pin and Chalk Pencil method or Tracing Paper and Dressmaker Wheel. Markings needed on right side of fabric should be thread traced.

NOTE: Broken-line boxes (a! b! c!) in layouts represent pieces cut by measurements provided.

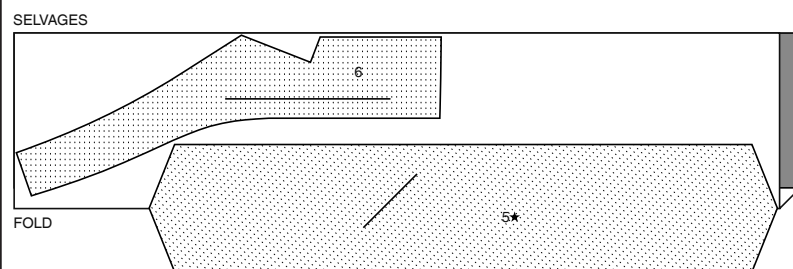
CUTTING LAYOUTS

RIGHT SIDE OF PATTERN	WRONG SIDE OF PATTERN	RIGHT SIDE OF FABRIC	WRONG SIDE OF FABRIC
-----------------------	-----------------------	----------------------	----------------------

INTERFACING A,B

USE PIECES 5 6

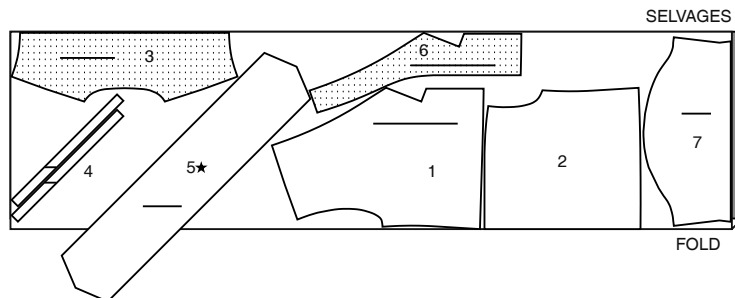
20" (51CM)
WITHOUT NAP
SIZES XS-S-M-L-XL



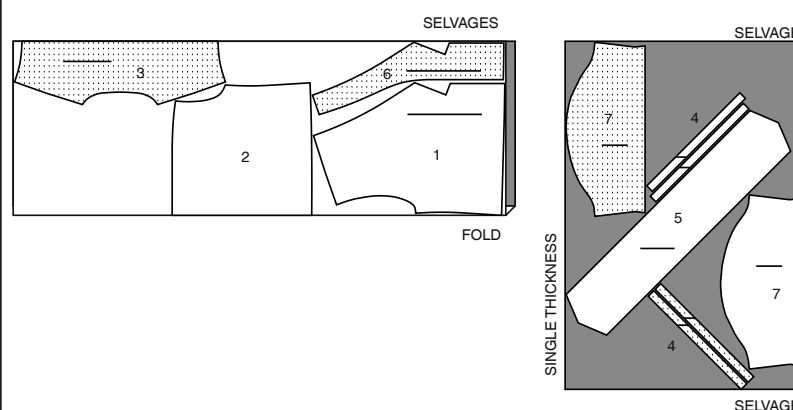
TOP A

USE PIECES 1 2 3 4 5 6 7

45" (115CM)
WITH NAP
SIZES XS-S-M-L



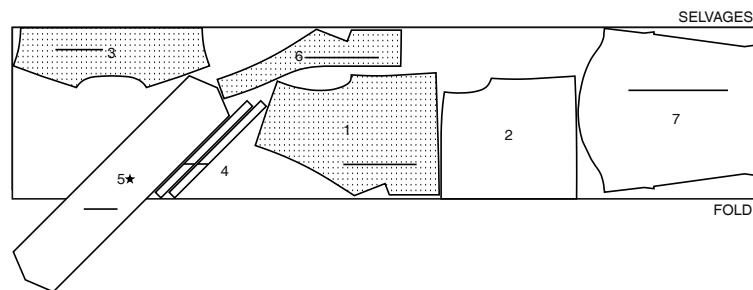
45" (115CM)
WITH NAP
SIZES XL



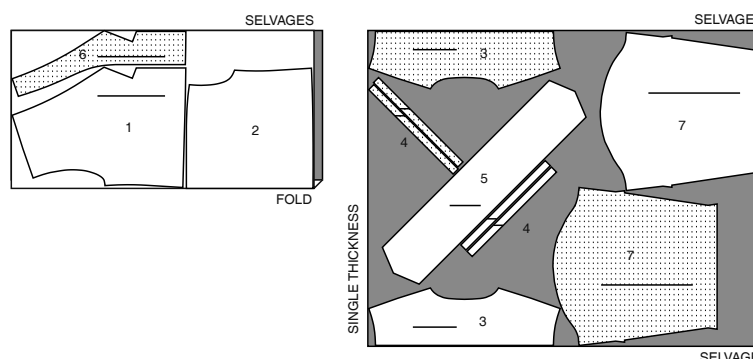
TOP B

USE PIECES 1 2 3 4 5 6 7

45" (115CM)
WITH NAP
SIZES XS-S-M-L



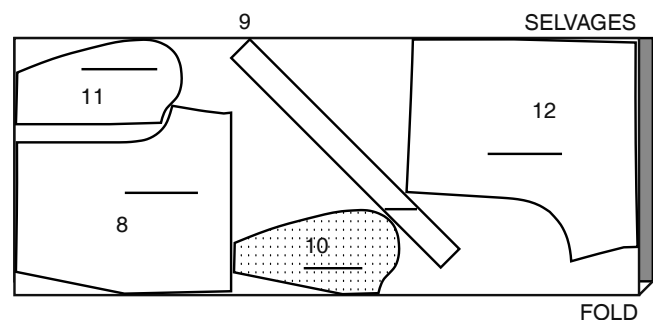
45" (115CM)
WITH NAP
SIZES XL



SHORTS C

USE PIECES 8 9 10 11 12

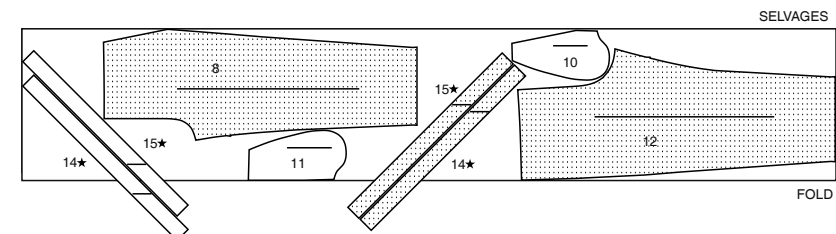
45" (115CM)
WITH NAP
SIZES XS-S-M-L-XL



SHORTS D

USE PIECES 8 10 11 12 14 15

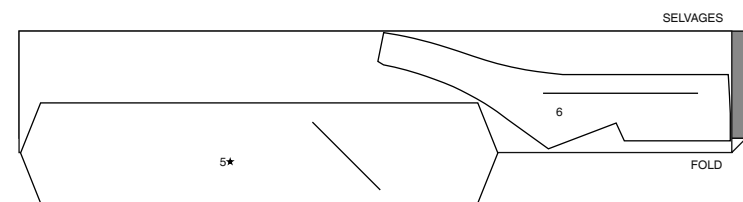
45" (115CM)
WITH NAP
SIZES XS-S-M-L-XL



INTERFACING, A,B

USE PIECES 5 6

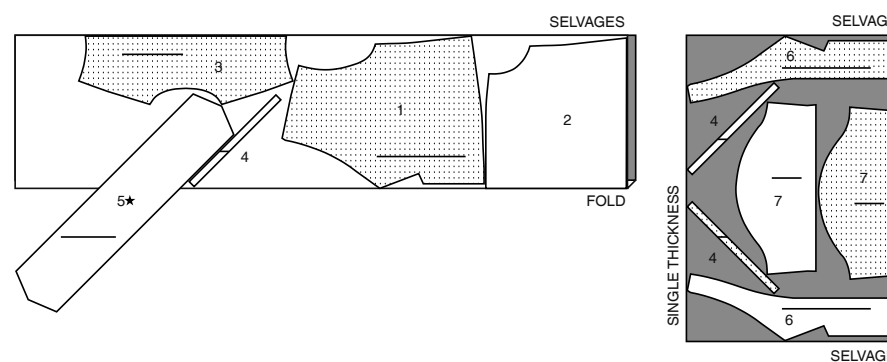
20" (51CM)
WITHOUT NAP
SIZES 1X-2X-3X-4X-5X



TOP A

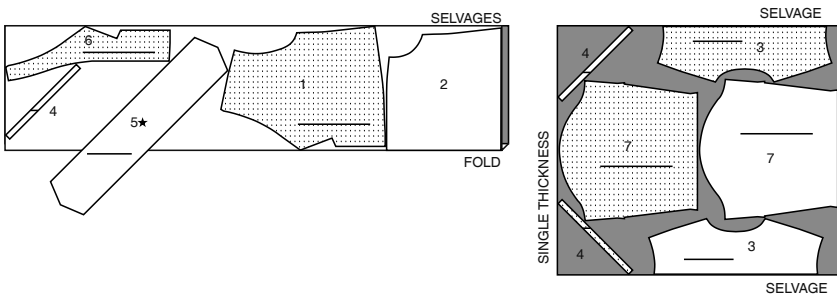
USE PIECES 1 2 3 4 5 6 7

45" (115CM)
WITH NAP
SIZES 1X-2X-3X-4X-5X



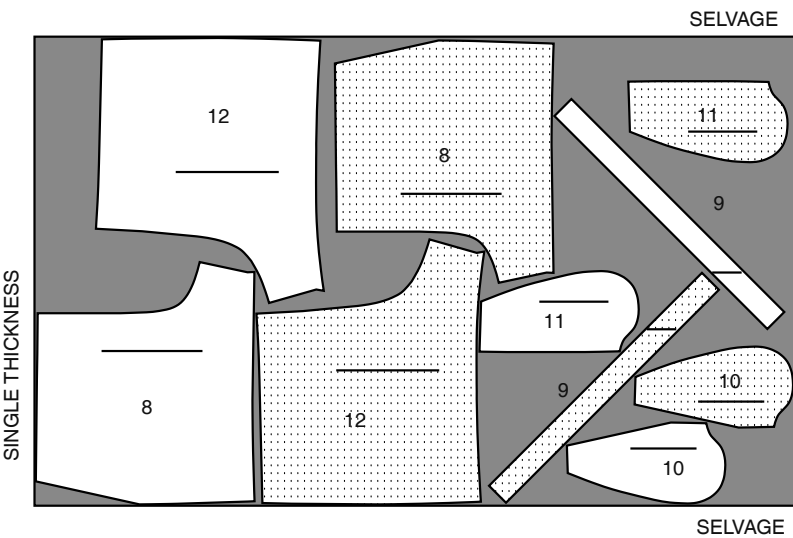
TOP B
USE PIECES 1 2 3 4 5 6 7

45" (115CM)
WITH NAP
SIZES 1X-2X-3X-4X-5X



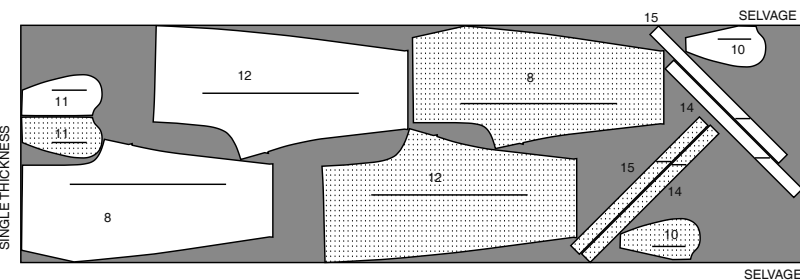
SHORTS C
USE PIECES 8 9 10 11 12

45" (115CM)
WITH NAP
SIZES 1X-2X-3X-4X-5X



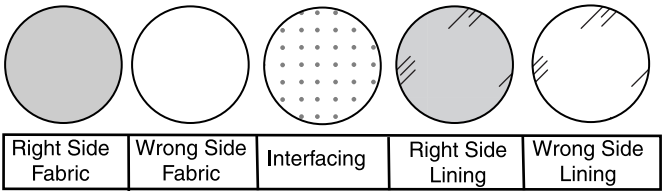
SHORTS D
USE PIECE 8 10 11 12 14 15

45" (115CM)
WITH NAP
SIZES 1X-2X-3X-4X-5X



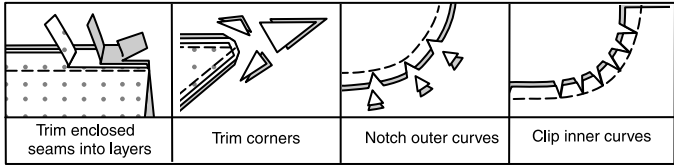
SEWING INFORMATION

FABRIC KEY



SEAM ALLOWANCES

Use 5/8" (1.5cm) seam allowances unless otherwise indicated.



PIN AND FIT

Pin or baste seams, **RIGHT SIDE TOGETHER**, matching notches. Fit garment before stitching major seams.

PRESS

Press seam allowances flat; then open unless otherwise stated. Clip where necessary so they lie flat.

GLOSSARY

Sewing methods in **BOLD TYPE** have Sewing Tutorial Video available. Scan QR CODE to watch videos:

GATHER – See **Gathering: “sewing two row gathers”** video.

FINISH – See **Seams: “how to finish seam allowances”** video.

NARROW HEM –See **Hems: “sewing narrow hems”** video.

REINFORCE – See **Machine Stitches: “how to reinforce seams”** video.

SLIPSTITCH – See **Hand Stitching: “how to slip stitch”** video.

STAYSTITCH – See **Machine Stitches: “how to do stay stitching”** video.

UNDERSTITCH – See **Machine Stitches: “how to understitch”** video.

SEWING TUTORIALS



Build your skills viewing short, easy-to-follow videos at simplicity.com/sewingtutorials

PATTERN PIECES WILL BE IDENTIFIED BY NUMBERS THE FIRST TIME THEY ARE USED.

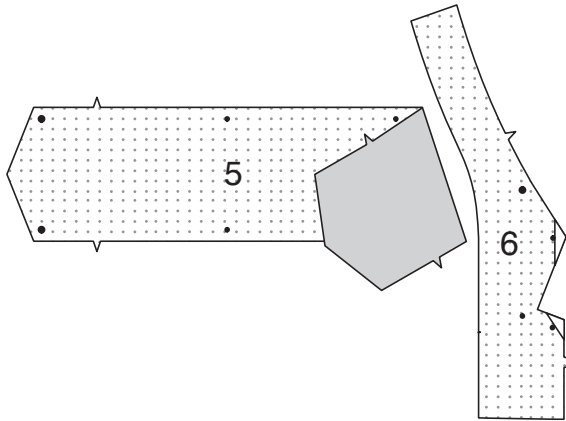
STITCH SEAMS WITH RIGHT SIDES TOGETHER UNLESS OTHERWISE STATED.

NOTE: Under each sub-heading, the first view will be illustrated, unless otherwise illustrated.

TOP A, B

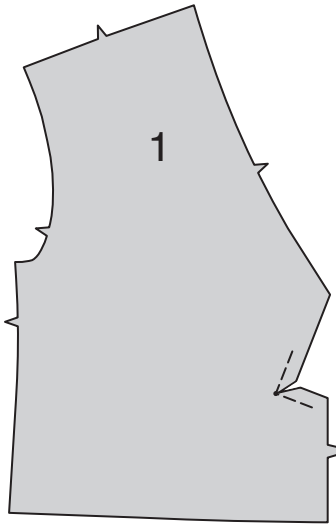
INTERFACING

1. Trim corners of **INTERFACING**, as shown. Fuse interfacing to wrong side of each matching **FABRIC** section, following manufacturer's instructions.

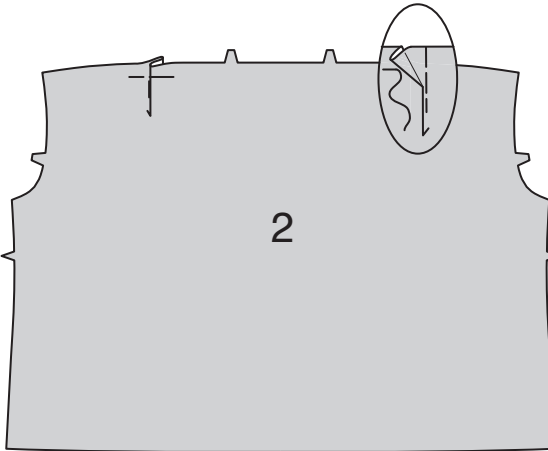


FRONT AND BACK

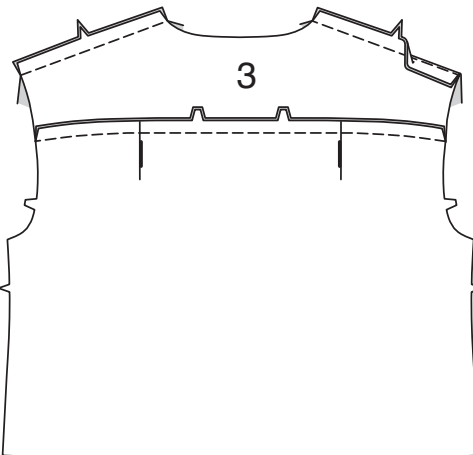
2. REINFORCE - Using fine stitches, stitch inner corner of **FRONT** (1) along seam line for 1”(2.5cm) on either side of center small dot, pivoting at dot. Clip seam allowance to stitching, being careful not to clip into stitching.



3. To make pleats on **BACK** (2), on **OUTSIDE**, fold along solid lines. Bring folds to broken lines in direction of arrows; pin. Baste across raw edge.

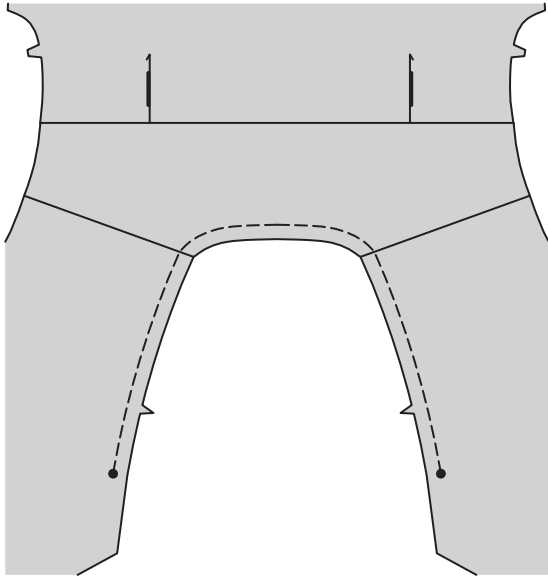


4. With **RIGHT** sides together, pin one **YOKE BACK** (3) section to upper edge of back, matching centers. Stitch; press seam toward yoke. (Remaining yoke section will be used as facing.) Stitch back to front at shoulders. Press seams toward back.

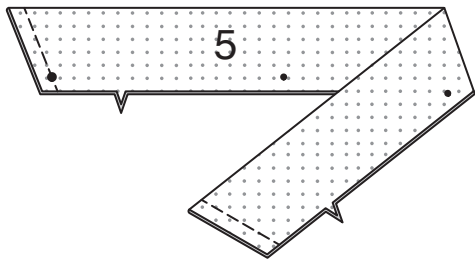


COLLAR

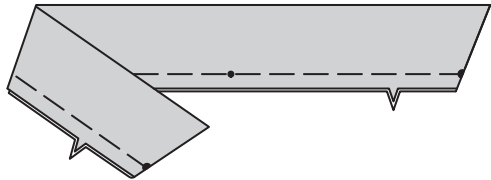
5. STAYSTITCH neck edge of top between large dots.



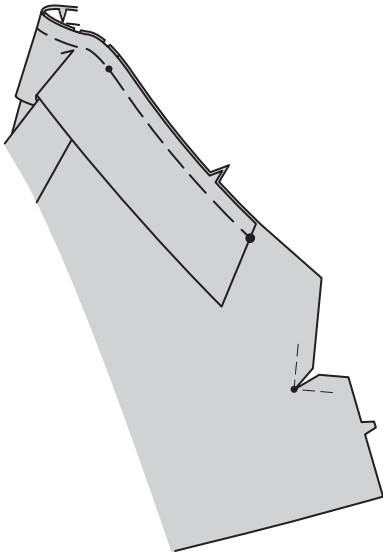
6. With **RIGHT** sides together, fold **COLLAR** (5) on foldline, matching center backs and dots. Stitch ends; trim seams.



7. Turn collar **RIGHT** side out; press. Baste raw edges together.



8. On outside, pin collar to neck edge, matching center backs, large dots and small dots to shoulder seams, clipping top neck edge where necessary; baste.

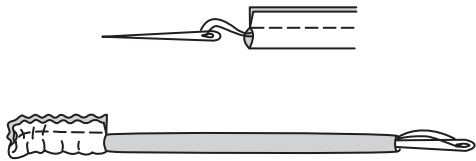


TIE ENDS

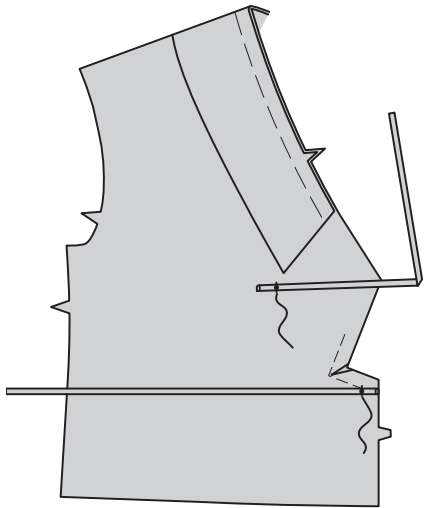
9. With **RIGHT** sides together, fold **TIE END** (4) in half, lengthwise. Stitch long edge and unmarked end in a 1/4”(6mm) seam, leaving marked end open.



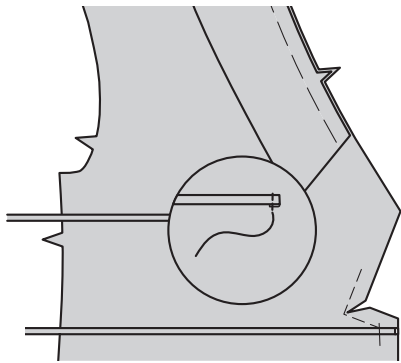
10. To turn, fasten a heavy thread securely to one end. Push needle (eye first) through strip.



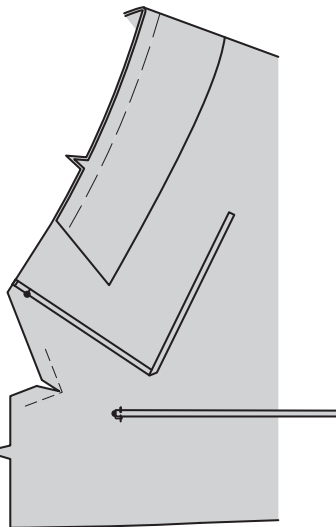
11. On outside, pin one tie end to right front, just below lower small dot, having raw edges even; baste. Pin one tie end to right front, centering over upper dot, having raw edges toward side seam. Stitch 5/8"(1.5cm) from raw edge; trim seam to 3/8"(1cm).



12. Turn tie toward side seam (covering raw edges). Stitch 1/4"(6mm) from seam.

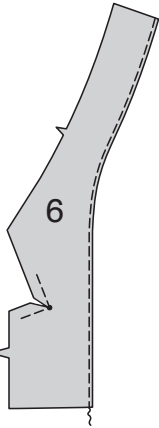


13. On outside, pin one tie end to left front, just above upper small dot, having raw edges even; baste. Pin remaining tie end to left front, centering over lower dot, having raw edges toward side seam. Stitch 5/8"(1.5cm) from raw edge; trim seam to 3/8"(1cm). Turn tie toward side seam (covering raw edges). Stitch 1/4"(6mm) from seam.

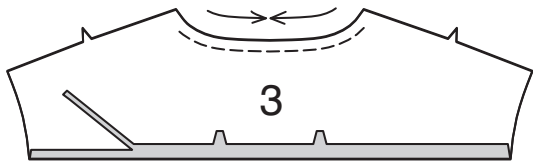


FRONT AND BACK FACING

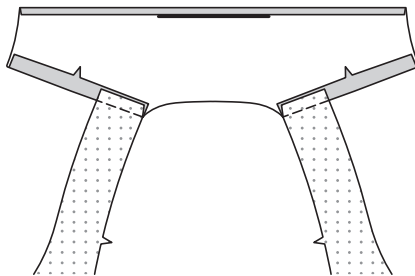
14. **REINFORCE** - Using fine stitches, stitch inner corner of **FRONT FACING** (6) along seam line for 1"(2.5cm) on either side of center small dot, pivoting at dot. Clip seam allowance to stitching, being careful not to clip into stitching. **FINISH** long unnotched edge of front facing.



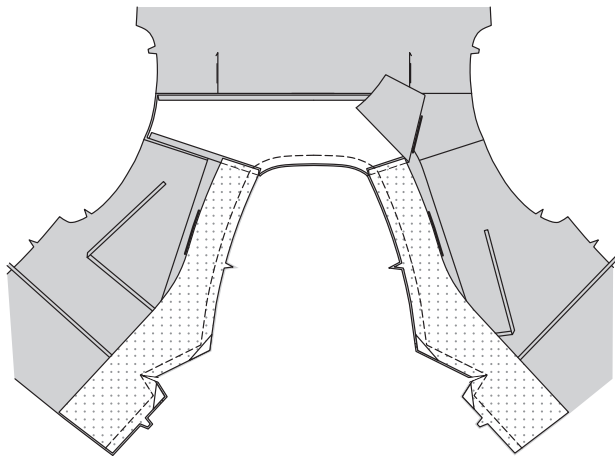
15. Press under 5/8"(1.5cm) on lower edge of yoke back **FACING** (3). Trim pressed edge to 3/8"(1cm). **STAYSTITCH** neck edge of back facing.



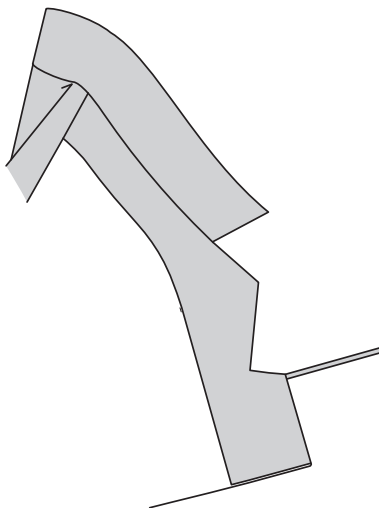
16. Stitch back facing to front facings at shoulders. Press seams and remainder of seam allowances toward back facing. Trim pressed seam to 3/8"(1cm).



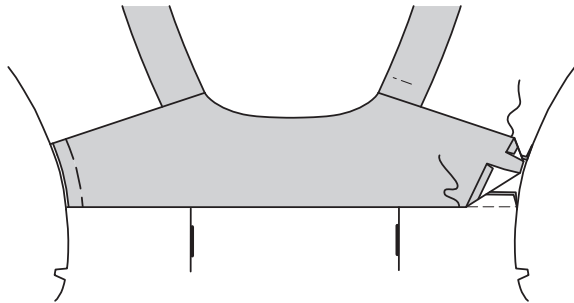
17. Pin facing to neck and front opening edges, clipping facing where necessary. Stitch; trim seam.



18. Turn facings to inside; press.

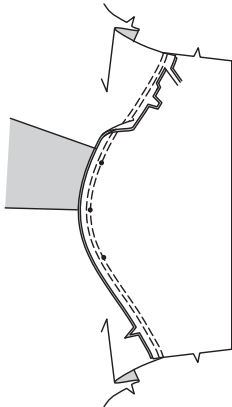


19. **SLIPSTITCH** pressed edges of back facing over shoulders and back seam. Baste armhole edges together.

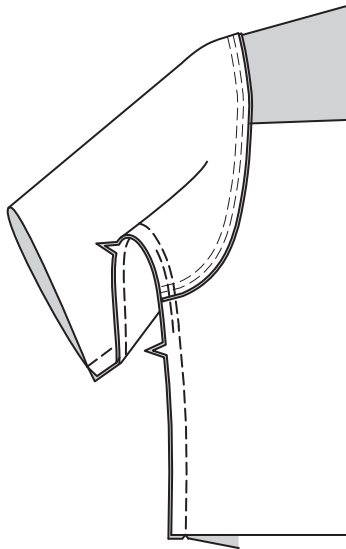


SLEEVE

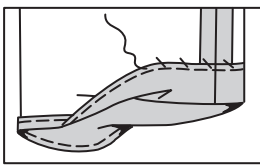
20. With **RIGHT** sides together, pin **SLEEVE** (7) to armhole edge with center small dot at shoulder seam, matching notches and remaining small dots; baste, clipping top if necessary. Stitch. Stitch again 1/8"(3mm) from first stitching. Trim seam below notches close to stitching. Press seam toward sleeve.



21. Pin back to front at sides; pin sleeve edges together. Stitch in one continuous seam. Stitch underarm curve again along previous stitching, as shown.

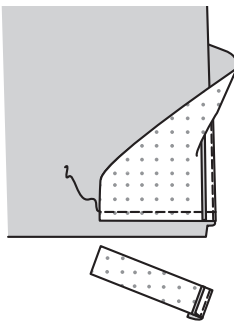


22. Turn up a 1-1/4"(3.2cm) hem on lower edge of sleeve. To finish the raw edge, stitch under 1/4"(6mm), zig-zag, OR overlock/serge. **SLIPSTITCH** hem in place; press.

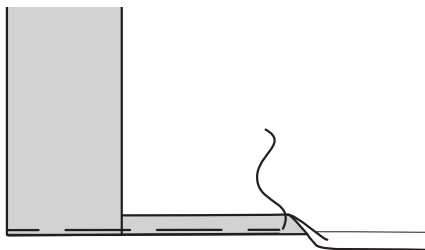


HEM

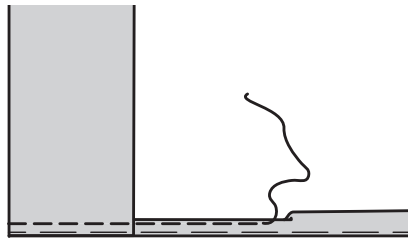
23. Turn lower edge of facings to outside along seam. Stitch across facing 5/8"(1.5cm) from lower edge. Trim as shown.



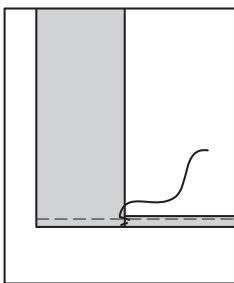
24. Turn facings to inside again, continuing to turn under 5/8"(1.5cm) on remainder of lower edge of top. Baste close to fold.



25. Finish remainder of lower edge of Top with a 5/8"(1.5cm) **NARROW HEM**, continuing stitching across front facing to opening edge; press.



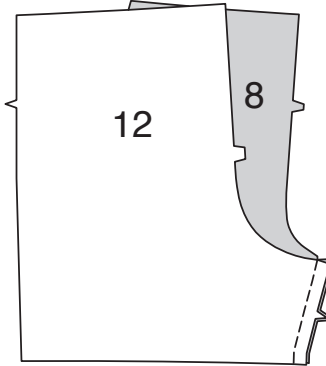
26. Catchstitch facings to hem



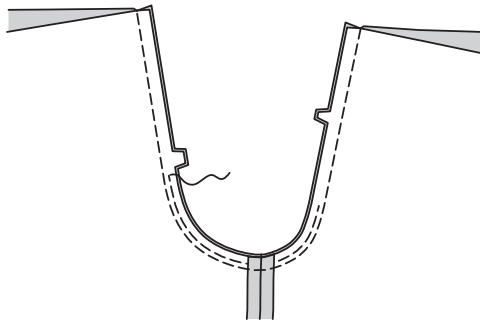
SHORTS C, PANTS D

FRONT AND BACK

1. Pin **FRONT** (8) to **BACK** (12) at inner leg seams. Stitch seam.



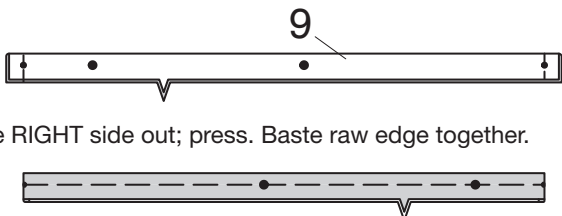
2. With **RIGHT** sides together, pin center seam, matching inner leg seams and notches. Stitch. Stitch again 1/4"(6mm) away in seam allowance along curve, as shown. Trim close to second stitching.



RUFFLES

VIEW C

3. Fold **RUFFLE** (9) in half, lengthwise, **RIGHT** sides together, matching dots. Stitch ends; trim seams.

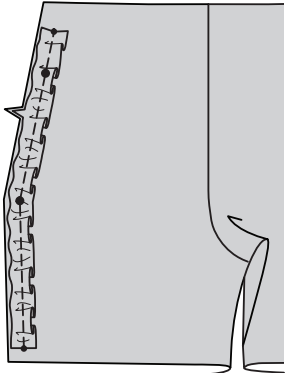


4. Turn ruffle **RIGHT** side out; press. Baste raw edge together.

5. **GATHER** raw edge of ruffle.



6. On outside, pin one ruffle to each side of front, matching notches, small and large dots. Adjust gathers; baste.

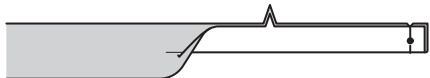


VIEW D

7. Pin one **UPPER RUFFLE** (14) section to one **LOWER RUFFLE** (15) section, matching notches; stitch. Stitch remaining ruffle sections in the same manner.



8. Fold ruffle in half, lengthwise, **RIGHT** sides together, matching notches, seams and dots. Stitch ends; trim seams.



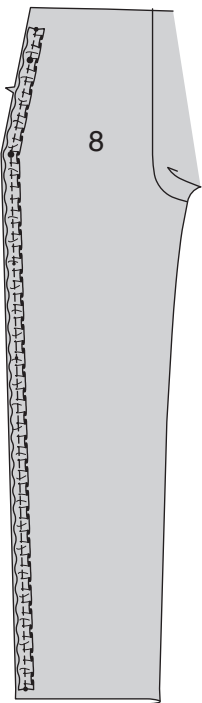
9. Turn ruffle, **RIGHT** side out; press. Baste raw edge together.



10. **GATHER** raw edge of ruffle.

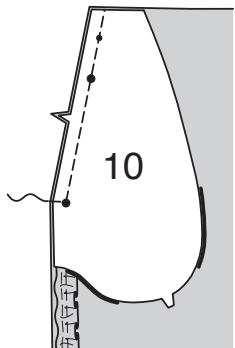


11. On outside, pin one ruffle section to each side of front, matching notches, small and large dots. Adjust gathers; baste.

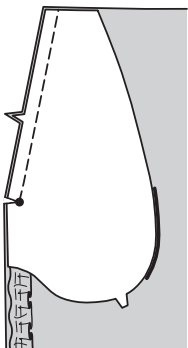


POCKETS

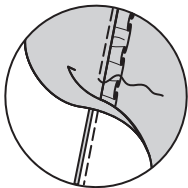
12. With **RIGHT** sides together, pin **POCKET FACING** (10) to upper side edge of front, (over ruffle), matching notches and dots. Stitch, ending at lower dot.



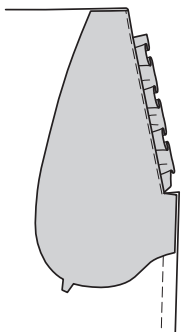
13. Clip to lower dot; trim seam.



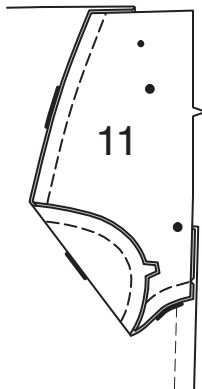
14. **UNDERSTITCH** pocket facing.



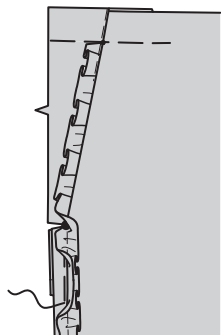
15. Turn pocket facing to inside; press.



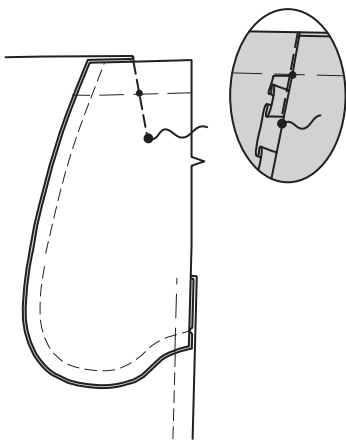
16. Stitch one **SIDE FRONT AND POCKET** (11) section to each pocket facing at outer edge, **RIGHT** sides together, matching notches and keeping front free. Press seamed edges together.



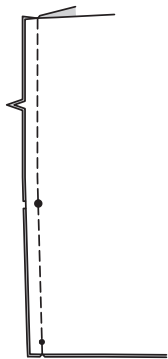
17. Baste across upper and side edges, matching dots and stitching lines, keeping ruffle free.



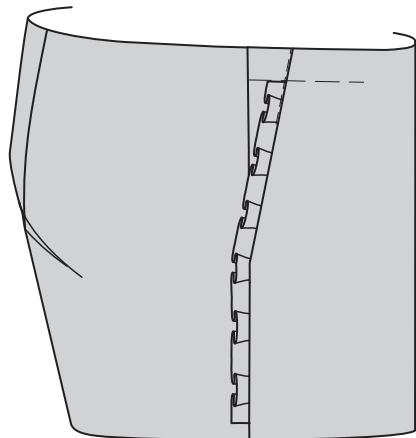
18. Stitch front along stitching line, from upper edge to upper large dot, stitching through ruffle seam (not the ruffle).



19. With **RIGHT** sides together, pin front to back at sides, matching small and large dots; stitch.

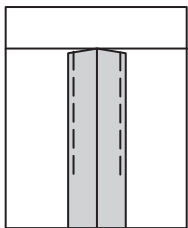


20. Turn ruffle toward back.

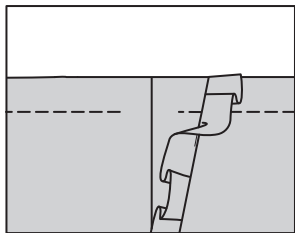
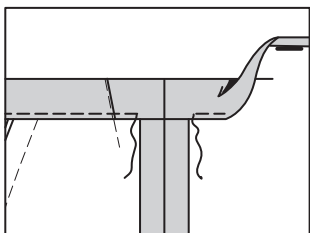


CASING

21. For easier insertion of elastic, baste about 3"(7.5cm) of seam allowances in place at casing area.



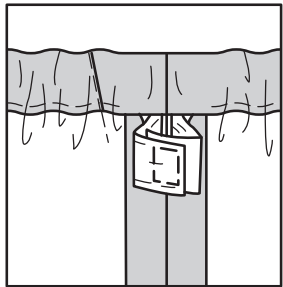
22. To form casing, turn upper edge of garment to inside along foldline; press. Turn under 1/4"(6mm) on raw edge and stitch in place, leaving an opening to insert elastic, keeping ruffle free.



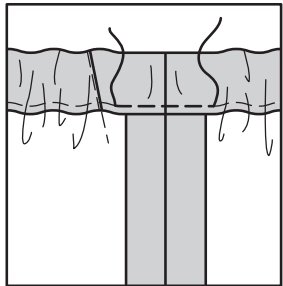
23. Cut a piece of elastic using **ELASTIC GUIDE FOR WAISTLINE** (13) pattern piece.



24. Insert elastic through casing. Lap ends. Hold with safety pin. Try on garment and adjust if necessary. Stitch ends of elastic securely.



25. Stitch opening in casing, stretching elastic while stitching, being careful not to catch ruffle.



HEMS

26. Press up 5/8"(1.5cm) hem allowance on lower edge of garment. To form **NARROW HEM**, tuck under raw edge to meet crease; press. Stitch hem in place, keeping ruffle free.

