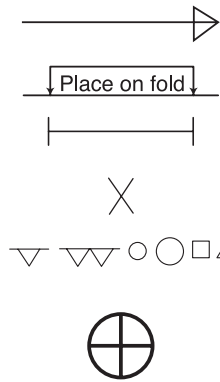


- 1 Front-A,B  
2 Side Front-A,B  
3 Back-A,B  
4 Side Back-A,B  
5 Front Neck Facing-A,B  
6 Back Neck Facing-A,B  
7 Front Armhole Facing-A,B  
8 Back Armhole Facing-A,B  
9 Front and Back-C,D  
10 Middle Front and Back-C,D  
11 Side Front and Back-C,D  
12 Front and Back Facing-C,D



## PATTERN MARKINGS

**GRAINLINE:** Place on straight grain of fabric, parallel to selvage or fold.

**FOLDLINE:** Place line on fold of fabric.

**BUTTONHOLE MARKING:** Indicates exact length and placement of buttonholes.

**BUTTON MARKING:** Indicates button placement.

**NOTCHES AND SYMBOLS:** For matching seams and construction details.

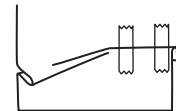
Indicates the Bustline, Waistline, Hip and/or Biceps. Measurements refer to circumference of Finished Garment (Body Measurement + Wearing Ease + Design Ease). Adjust pattern if necessary. The measurement excludes pleats, tucks, darts and seam allowances.

**SEAM ALLOWANCE:** 5/8" (1.5cm) included unless otherwise indicated, but not printed on tissue.

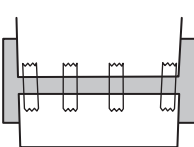
## ADJUST IF NECESSARY

Lengthen or Shorten at adjustment lines (==) or where indicated on pattern. If substantial length is added, you may need to purchase additional fabric.

**TO SHORTEN:** Crease along adjustment line. Make a fold half the amount needed. Tape in place.



**TO LENGTHEN:** Slash between adjustment lines. Spread amount as needed, keeping edges parallel. Tape over paper.



When Alteration lines are not on tissue, lengthen or shorten at lower edge.

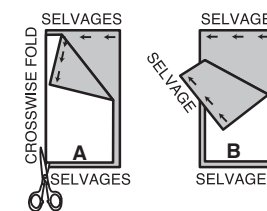
**SHRINK FABRIC** if not labeled pre-shrunk. Press.

**CIRCLE LAYOUT** for View, Size, Fabric Width.

Use **WITH NAP** layout for fabrics with one-way designs, nap, pile or surface shading. Because most knits have surface shading, a with nap layout is used.

For **DOUBLE THICKNESS (WITH FOLD)** - fold fabric with right sides together.

**\* DOUBLE THICKNESS (WITHOUT FOLD)** - For fabrics with nap, fold fabric crosswise, right sides together. Mark as shown. Cut along crosswise fold of fabric (A). Turn upper layer 180° so arrows go in same direction and place over lower layer, right sides together (B).



For **SINGLE THICKNESS** - place fabric right side up. (For Fur Pile fabrics, place pile side down.)

## CUTTING AND MARKING

★ Cut other pieces first, allowing enough fabric to cut this piece. Open fabric. For "Cut 1" pieces, cut piece once on single layer of fabric with piece face up on right side of fabric.

Pattern may have cutting lines for several sizes. Select the proper cutting line or pattern pieces for your size.

Before **CUTTING** place all pieces on fabric according to layout. Pin. (**Layouts show approximate position of pattern pieces; position may vary according to your pattern size.**) Cut **ACCURATELY**, cutting notches outward.

Before removing pattern, **TRANSFER MARKINGS** and lines of construction to Wrong Side of fabric, using the Pin and Chalk Pencil method or Tracing Paper and Dressmaker Wheel. Markings needed on right side of fabric should be thread traced.

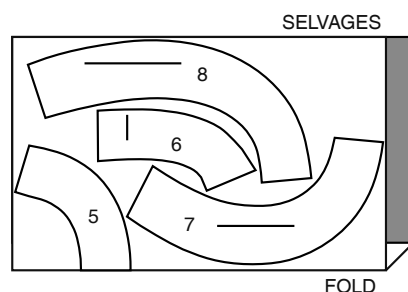
**NOTE:** Broken-line boxes (a! b! c!) in layouts represent pieces cut by measurements provided.

## CUTTING LAYOUTS

## INTERFACING A, B

USE PIECES: 5 6 7 8

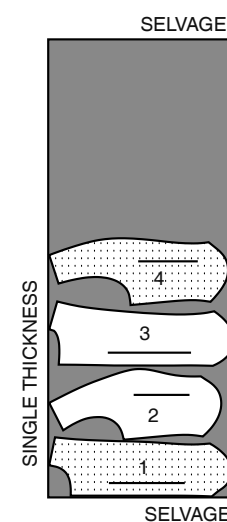
20" (51 CM)  
WITHOUT NAP  
ALL SIZES



## CONTRAST B

USE PIECES: 1 2 3 4

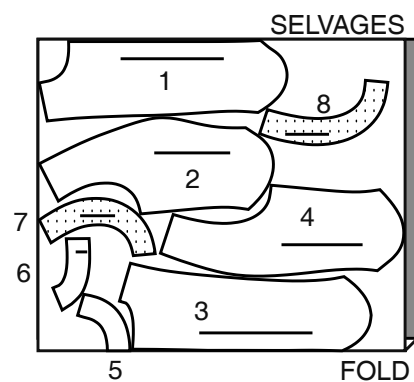
60" (150 CM)  
WITH NAP  
ALL SIZES



## TOP A

USE PIECES: 1 2 3 4 5 6 7 8

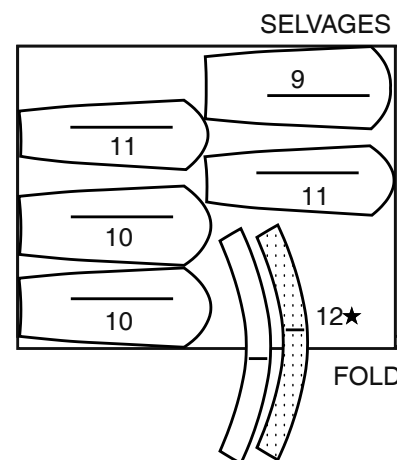
60" (150 CM)  
WITH NAP  
ALL SIZES



## SKIRT C

USE PIECES: 9 10 11 12

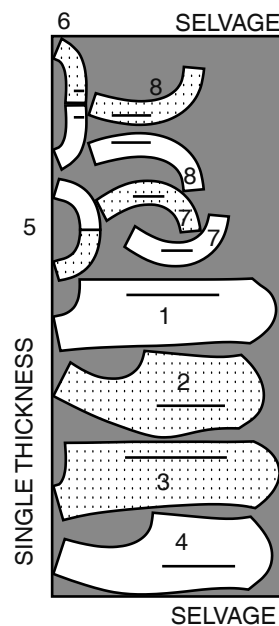
60" (150 CM)  
WITH NAP  
ALL SIZES



## TOP B

USE PIECES: 1 2 3 4 5 6 7 8

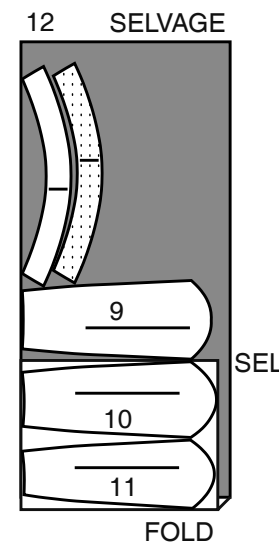
60" (150 CM)  
WITH NAP  
ALL SIZES



## SKIRT D

USE PIECES: 9 10 11 12

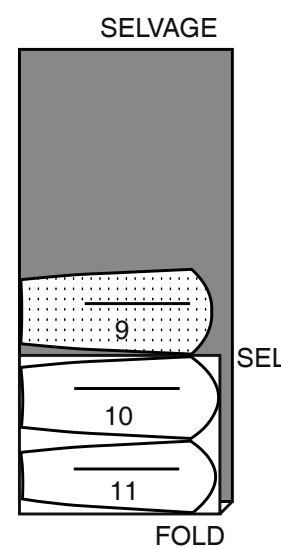
60" (150 CM)  
WITH NAP  
SIZES 8 10 12 14 16 18 20 22



## CONTRAST D

USE PIECES: 9 10 11

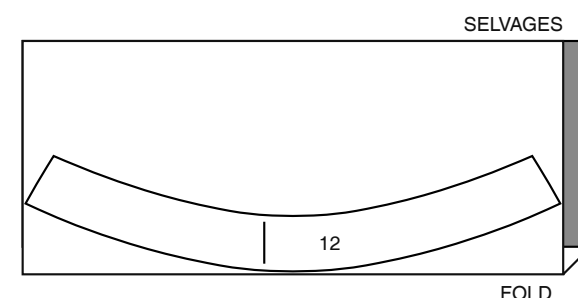
60" (150 CM)  
WITH NAP  
ALL SIZES



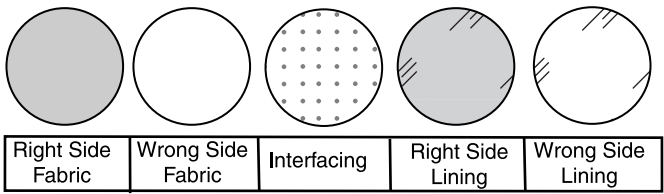
## INTERFACING C,D

USE PIECES: 12

20" (51 CM)  
WITHOUT NAP  
ALL SIZES

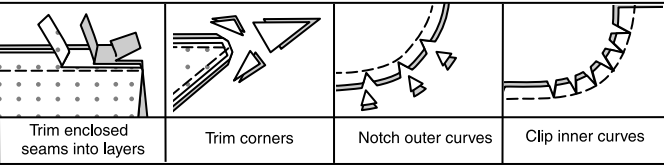


SEWING INFORMATION  
FABRIC KEY



SEAM ALLOWANCES

Use 5/8" (1.5cm) seam allowances unless otherwise indicated.



PIN AND FIT

Pin or baste seams, **RIGHT SIDE TOGETHER**, matching notches. Fit garment before stitching major seams.

PRESS

Press seam allowances flat; then open unless otherwise stated. Clip where necessary so they lie flat.

GLOSSARY

Sewing methods in **BOLD TYPE** have Sewing Tutorial Video available. Scan **QR CODE** to watch videos:

**TOPSTITCH** – See **Machine Stitches: “how to topstitch”** video.

**TRIM SEAM** – See **Seams: “how to trim, clip and layer seams”** video.

**UNDERSTITCH** – See **Machine Stitches: “how to understitch”** video.

SEWING TUTORIALS



Build your skills viewing short, easy-to-follow videos at [simplicity.com/sewingtutorials](https://www.simplicity.com/sewingtutorials)

**PATTERN PIECES WILL BE IDENTIFIED BY NUMBERS THE FIRST TIME THEY ARE USED.**  
**STITCH SEAMS WITH RIGHT SIDES TOGETHER UNLESS OTHERWISE STATED.**

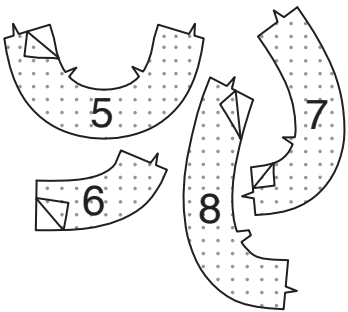
TOP A, B

**NOTE:** To indicate contrast fabric, **VIEW B** will be shown in the following illustrations.

INTERFACING

**1.** Pin interfacing to **WRONG** side of **FRONT NECK FACING** (5), **BACK NECK FACING** (6), **FRONT ARMHOLE FACING** (7), and **BACK ARMHOLE FACING** (8).

Fuse in place following manufacturer's directions.

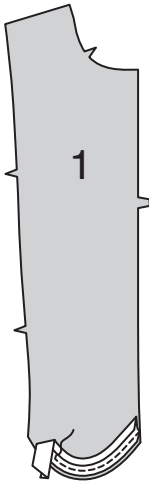


BODICE PANELS

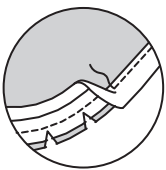
**2.** Open out one edge of 1/2" (1.3cm) single fold bias tape; press.

With **RIGHT** sides together and raw edges even, pin tape to lower edge of one **FRONT** (1) panel.

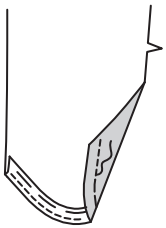
**TIP:** Using a steam iron, pre-shape bias tape to match contour of lower edge. Stitch in a 3/8" (1cm) seam. **TRIM SEAM.**



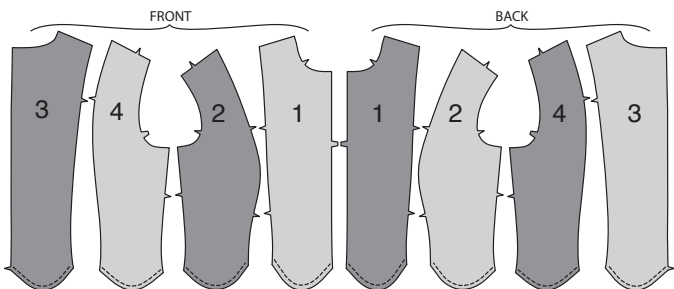
**3. UNDERSTITCH** tape by pressing tape and seam away from front panel, stitching through tape and seam allowances close to seam.



**4.** Turn tape to **INSIDE**; press. Baste close to inner edge of tape. On **OUTSIDE**, **TOPSTITCH** as basted.

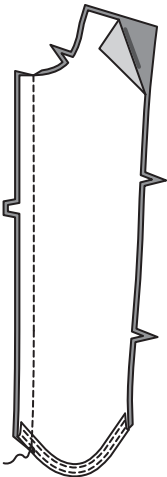


**5.** Finish lower edge of remaining front panel and **SIDE FRONT** (2), **BACK** (3), and **SIDE BACK** (4) panels in the same manner.

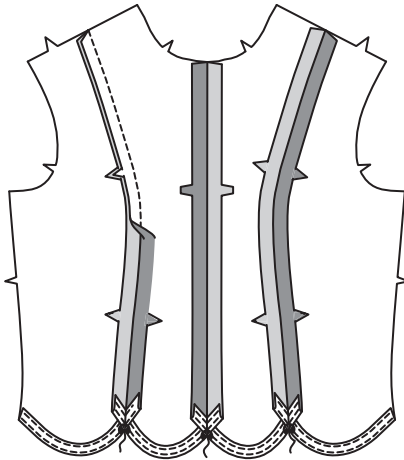


BODICE

**6.** With **RIGHT** sides together and raw edges even, pin center front edges of front panels, Matching small dots and notches. Stitch.

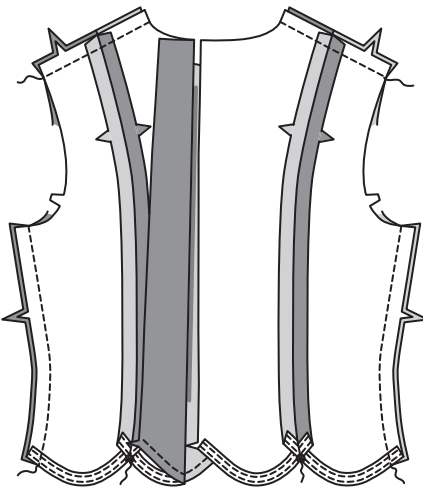


**7.** With **RIGHT** sides together and raw edges even, pin side front panels to front, matching small dots and notches. Stitch.



**8.** With **RIGHT** sides together and raw edges even, pin side back panels to back, matching small dots and notches. Stitch.

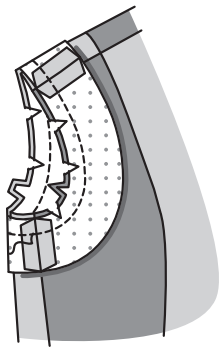
Stitch front to back at side and shoulder edges.



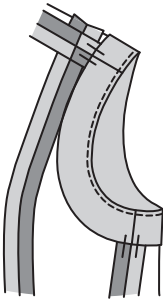
**9.** Stitch **FRONT ARMHOLE FACING** (7) to **BACK ARMHOLE FACING** (8) along shoulder and side edges. Stitch 1/4" (6mm) from unnotched edge and finish with pinking, overcasting, overlocking, zigzag stitching, or by turning in along stitching and stitching close to fold.



**10.** With **RIGHT** sides together and raw edges even, stitch facing to armhole edge, matching shoulder and underarm seams. **TRIM SEAM.**



**11. UNDERSTITCH** the facing. Turn facing to **INSIDE**; press. To keep facing from rolling to **OUTSIDE**, secure it at the seam allowances by tacking it by hand, stitching in the ditch, or using a small piece of fusible web.

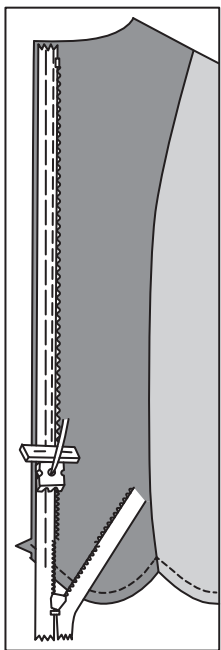


ZIPPER AND FACING

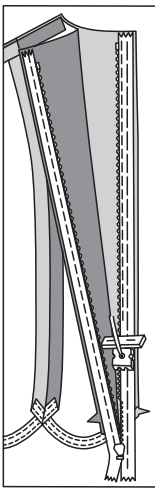
**NOTE:** Stitch the invisible zipper using an invisible zipper foot. Before you begin, be sure to line up your needle with the center of the invisible zipper foot or you may break your needle. When the coils are to the **LEFT** of the raw edge use the **LEFT** groove and when the coils are to the **RIGHT** of the raw edge use the **RIGHT** groove.

**NOTE:** The zipper is longer than the zipper opening and will be adjusted after the zipper is inserted.

**12.** Open the zipper and press the tape flat on the **WRONG** side, unrolling the coils. Do not press the coils. (Use a low iron setting.) On **OUTSIDE**, pin **RIGHT** side of the zipper face down on the **RIGHT** side of the zipper opening. Have the coil along the seam line, the tape within the seam allowance and the top stop a scant 3/4" (2cm) below upper edge, as shown. Hand-baste along center of the tape. Position zipper foot at the top of the zipper with **RIGHT** groove of the foot over coil. Stitch along tape to the notch. Back-stitch to reinforce.

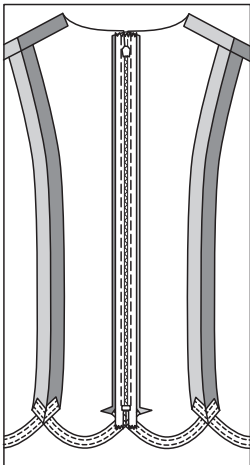
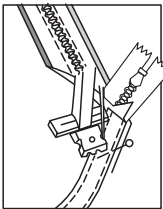


**13.** Pin the remaining half of the zipper to the **LEFT** side of the zipper opening in same manner. Make sure the upper and lower edges of the garment are even. Hand-baste along the center of the tape. Position zipper foot at the top of the zipper with **LEFT** groove over the coil. Stitch along tape to the notch. Back-stitch to reinforce.



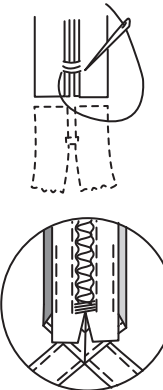
**14.** Close zipper and check that it is invisible from the **OUTSIDE**.

Pull the free ends of the zipper tape away from the seam allowance. Pin remaining center back seam together below zipper. Position zipper foot all the way to the **LEFT** so the needle goes down through the outer notch of the foot. Start stitching seam 1/4" (6mm) above lowest stitch and slightly to the **LEFT**. Stitch seam.



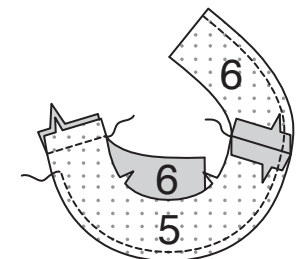
**15.** The zipper is longer than the opening, using a strong thread, hand-sew a few small stitches across ends of coils at end of opening. Trim away lower end of zipper tape to within 5/8" (1.5cm) of hand-stitches.

If you prefer, open out each seam allowance at end of zipper and stitch tape to seam allowance.

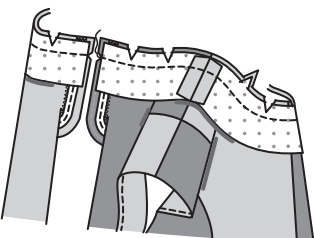




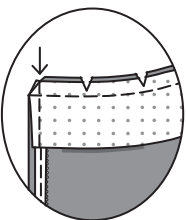
**16.** Stitch FRONT NECK FACING (5) to BACK NECK FACING (6) at shoulder edges. Stitch 1/4" (6mm) from unnotched edge and finish with pinking, overcasting, overlocking, zigzag stitching, or by turning in along stitching and stitching close to fold.



**17.** Open out center back opening edges of top, rolling the zipper teeth away from the opening edge. With RIGHT sides together, pin facing to top, matching centers and side seams. Stitch upper edge. **TRIM SEAM.**



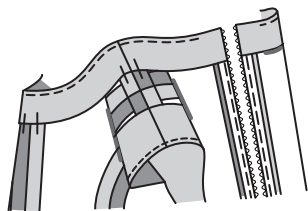
**18.** Pin back opening edges together. Using an adjustable zipper foot, stitch 1/2" (1.3cm) from back edges, keeping zipper teeth free. Trim corners. Do not trim center back edges.



**19. UNDERSTITCH** the facing as far as possible.

Turn facing and back edges to INSIDE, rolling zipper teeth back in place; press.

To keep the facing from rolling to OUTSIDE, secure it at the seam allowances by tacking it by hand.



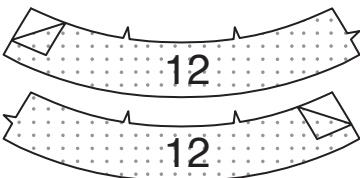
**SKIRT C, D**

**NOTE:** To indicate contrast fabric, VIEW D will be shown in the following illustrations.

**INTERFACING**

**1.** Pin interfacing to WRONG side of FRONT AND BACK FACING (12) sections.

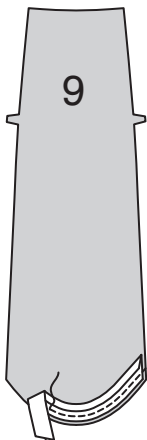
Fuse in place following manufacturer's directions.



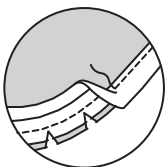
**SKIRT PANELS**

**2.** Open out one edge of 1/2" (1.3cm) single fold bias tape; press. With RIGHT sides together and raw edges even, pin tape to lower edge of FRONT AND BACK (9) panel.

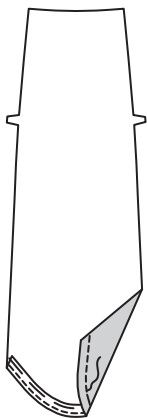
**TIP:** Using a steam iron, pre-shape bias tape to match contour of lower edge. Stitch in a 3/8" (1cm) seam. **TRIM SEAM.**



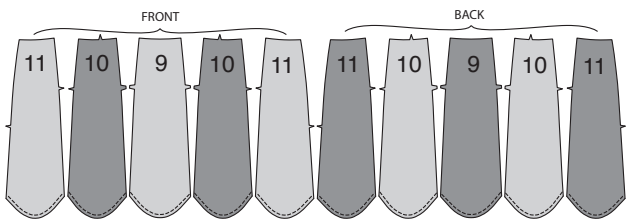
**3. UNDERSTITCH** tape by pressing tape and seam away from front panel, stitching through tape and seam allowances close to seam.



**4.** Turn tape to INSIDE; press. Baste close to inner edge of tape. On OUTSIDE, **TOPSTITCH** as basted.

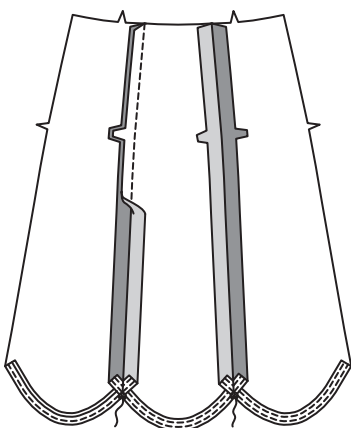


**5.** Finish lower edge of remaining front and back panel and MIDDLE FRONT AND BACK (10), and SIDE FRONT AND BACK (11) panels in the same manner.

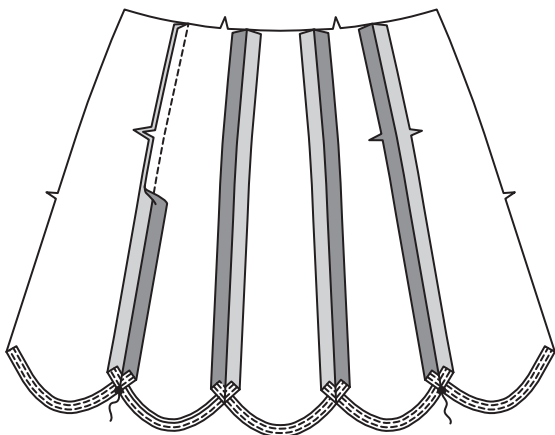


**SKIRT**

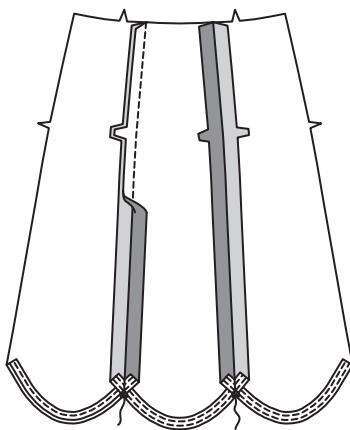
**6.** With RIGHT sides together and raw edges even, pin middle front sections to skirt front, matching small dots and notches. Stitch.



**7.** With RIGHT sides together and raw edges even, pin side front sections to middle front sections, matching small dots and notches. Stitch.

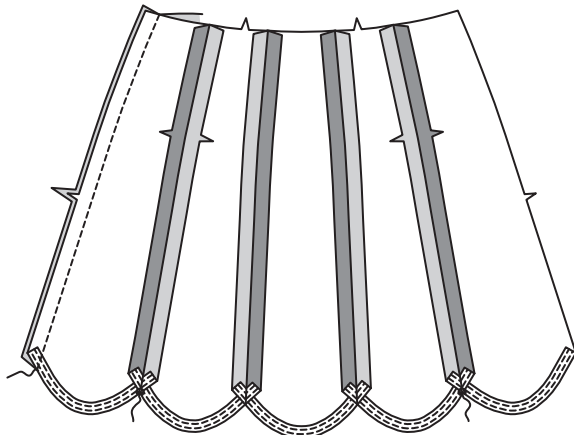


**8.** With RIGHT sides together and raw edges even, pin middle back sections to skirt back, matching small dots and notches. Stitch.



**9.** With RIGHT sides together and raw edges even, pin side back sections to middle back sections, matching small dots and notches. Stitch.

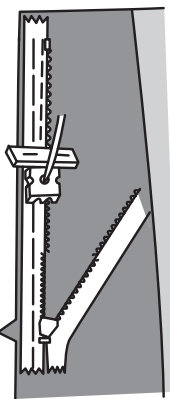
Stitch front to back along RIGHT side edge.



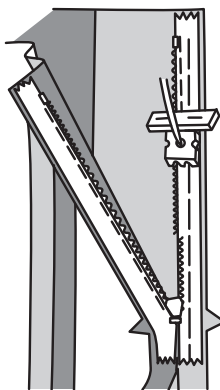
**ZIPPER AND FACING**

**NOTE:** Stitch the invisible zipper using an invisible zipper foot. Before you begin, be sure to line up your needle with the center of the invisible zipper foot or you may break your needle. When the coils are to the LEFT of the raw edge use the LEFT groove and when the coils are to the RIGHT of the raw edge use the RIGHT groove.

**10.** Open the zipper and press the tape flat on the WRONG side, unrolling the coils. Do not press the coils. (Use a low iron setting.) On OUTSIDE, pin RIGHT side of the zipper face down on the RIGHT side of the zipper opening (skirt left back). Have the coil along the seam line, the tape within the seam allowance and the top stop a scant 3/4" (2cm) below upper edge, as shown. Hand-baste along center of the tape. Position zipper foot at the top of the zipper with RIGHT groove of the foot over coil. Stitch along tape to the notch. Back-stitch to reinforce.

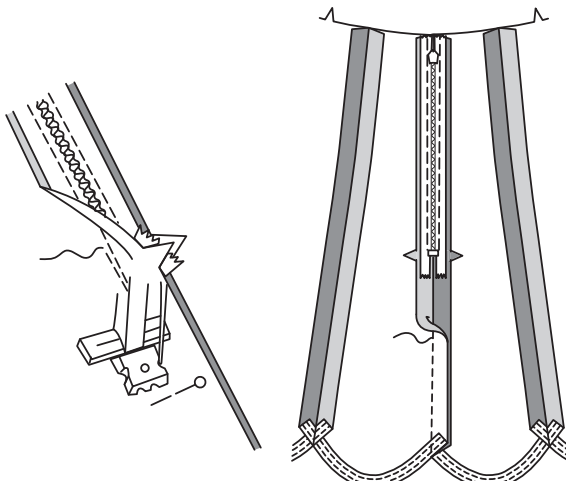


**11.** Pin the remaining half of the zipper to the LEFT side of the zipper opening (skirt left front) in same manner. Make sure the upper and lower edges of the garment are even. Hand-baste along the center of the tape. Position zipper foot at the top of the zipper with LEFT groove over the coil. Stitch along tape to the notch. Back-stitch to reinforce.

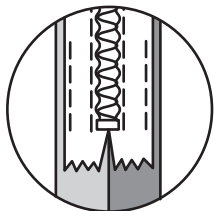


**12.** Close zipper and check that it is invisible from the OUTSIDE.

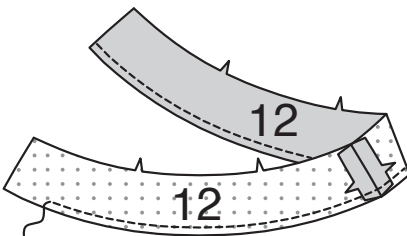
Pull the free ends of the zipper tape away from the seam allowance. Pin remaining LEFT side edges together below zipper. Position zipper foot all the way to the LEFT so the needle goes down through the outer notch of the foot. Start stitching seam 1/4" (6mm) above lowest stitch and slightly to the LEFT. Stitch seam.



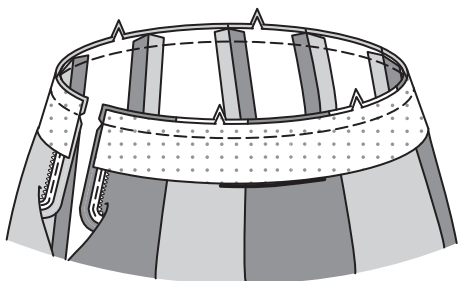
**13.** If you prefer, open out each seam allowance at end of zipper and stitch tape to seam allowance.



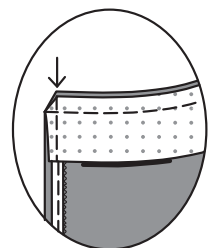
**14.** Stitch FRONT AND BACK FACING (12) sections together at RIGHT side edges. Stitch 1/4" (6mm) from unnotched edge and finish with pinking, overcasting, overlocking, zigzag stitching, or by turning in along stitching and stitching close to fold.



**15.** Open out LEFT side opening edges of skirt, rolling the zipper teeth away from the opening edge. With RIGHT sides together, pin facing to skirt, matching centers and side seams. Stitch upper edge. **TRIM SEAM.**



**16.** Pin LEFT side opening edges together. Using an adjustable zipper foot, stitch 1/2" (1.3cm) from left side edges, keeping zipper teeth free. Trim corners. Do not trim left side edges.



**17. UNDERSTITCH** the facing as far as possible.

Turn facing and left side edges to INSIDE, rolling zipper teeth back in place; press.

To keep the facing from rolling to OUTSIDE, secure it at the seam allowances by tacking it by hand.

