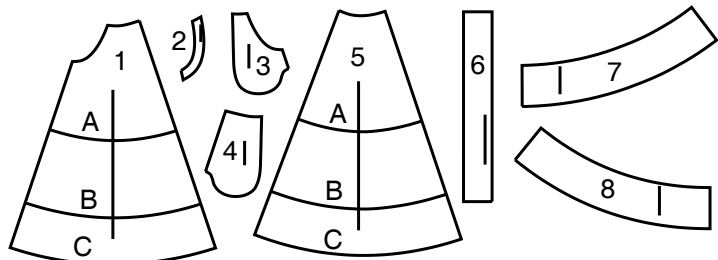
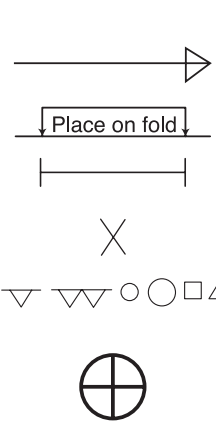


8 PATTERN PIECE



- 1 Front-A,B,C
- 2 Pocket Interfacing-A,B,C
- 3 Pocket Facing-A,B,C
- 4 Side Front and Pocket-A,B,C
- 5 Back-A,B,C
- 6 Waistband-A,B,C
- 7 Front Hem Facing-C
- 8 Back Hem Facing-C



PATTERN MARKINGS

GRAINLINE: Place on straight grain of fabric, parallel to selvage or fold.

FOLDLINE: Place line on fold of fabric.

BUTTONHOLE MARKING: Indicates exact length and placement of buttonholes.

BUTTON MARKING: Indicates button placement.

NOTCHES AND SYMBOLS: For matching seams and construction details.

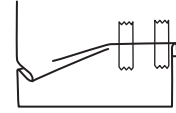
Indicates the Bustline, Waistline, Hip and/or Biceps. Measurements refer to circumference of Finished Garment (Body Measurement + Wearing Ease + Design Ease). Adjust pattern if necessary. The measurement excludes pleats, tucks, darts and seam allowances.

SEAM ALLOWANCE: 5/8" (1.5cm) included unless otherwise indicated, but not printed on tissue.

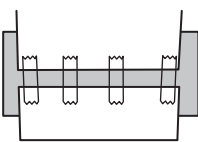
ADJUST IF NECESSARY

Lengthen or Shorten at adjustment lines (==) or where indicated on pattern. If substantial length is added, you may need to purchase additional fabric.

TO SHORTEN: Crease along adjustment line. Make a fold half the amount needed. Tape in place.



TO LENGTHEN: Slash between adjustment lines. Spread amount as needed, keeping edges parallel. Tape over paper.



When Alteration lines are not on tissue, lengthen or shorten at lower edge.

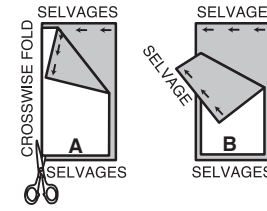
SHRINK FABRIC if not labeled pre-shrunk. Press.

CIRCLE LAYOUT for View, Size, Fabric Width.

Use **WITH NAP** layout for fabrics with one-way designs, nap, pile or surface shading. Because most knits have surface shading, a with nap layout is used.

For **DOUBLE THICKNESS (WITH FOLD)** - fold fabric with right sides together.

*** DOUBLE THICKNESS (WITHOUT FOLD)** - For fabrics with nap, fold fabric crosswise, right sides together. Mark as shown. Cut along crosswise fold of fabric (A). Turn upper layer 180° so arrows go in same direction and place over lower layer, right sides together (B).



For **SINGLE THICKNESS** - place fabric right side up. (For Fur Pile fabrics, place pile side down.)

CUTTING AND MARKING

★ Cut other pieces first, allowing enough fabric to cut this piece. Open fabric. For "Cut 1" pieces, cut piece once on single layer of fabric with piece face up on right side of fabric.

Pattern may have cutting lines for several sizes. Select the proper cutting line or pattern pieces for your size.

Before **CUTTING** place all pieces on fabric according to layout. Pin. (**Layouts show approximate position of pattern pieces; position may vary according to your pattern size.**) Cut **ACCURATELY**, cutting notches outward.

Before removing pattern, **TRANSFER MARKINGS** and lines of construction to Wrong Side of fabric, using the Pin and Chalk Pencil method or Tracing Paper and Dressmaker Wheel. Markings needed on right side of fabric should be thread traced.

NOTE: Broken-line boxes (a! b! c!) in layouts represent pieces cut by measurements provided.

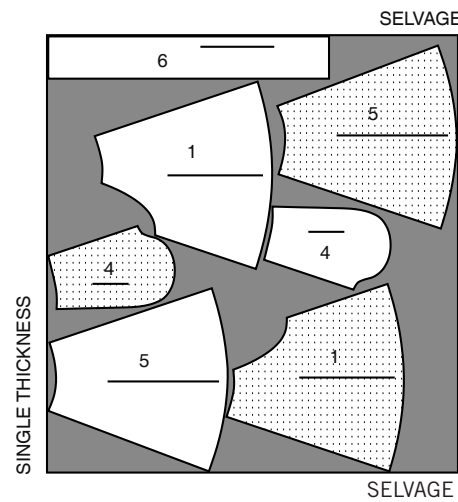
CUTTING LAYOUTS

RIGHT SIDE OF PATTERN	WRONG SIDE OF PATTERN	RIGHT SIDE OF FABRIC	WRONG SIDE OF FABRIC
-----------------------	-----------------------	----------------------	----------------------

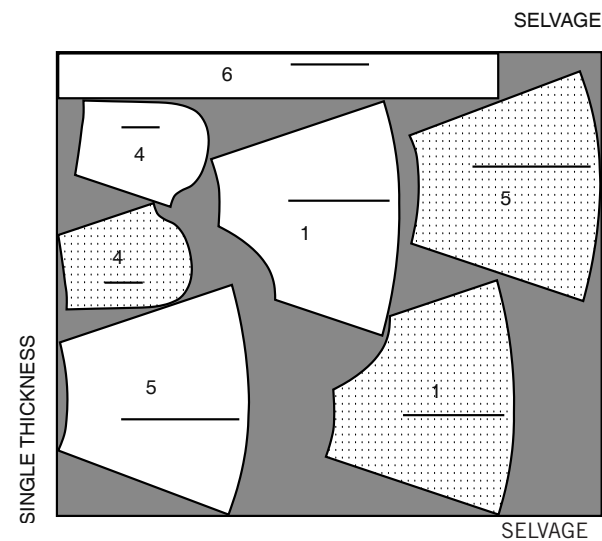
SKIRT A

USE PIECES 1 4 5 6

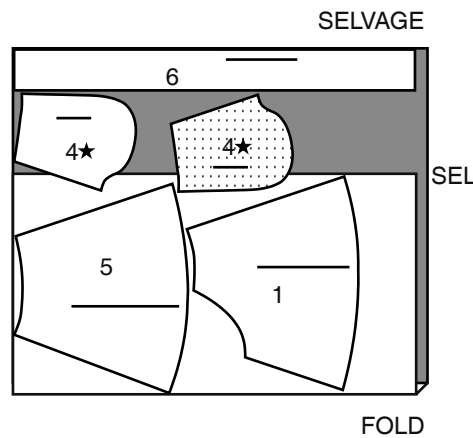
45" (115CM)
WITH NAP
SIZES 6 8 10



45" (115CM)
WITH NAP
SIZES 12 14 16 18 20 22 24



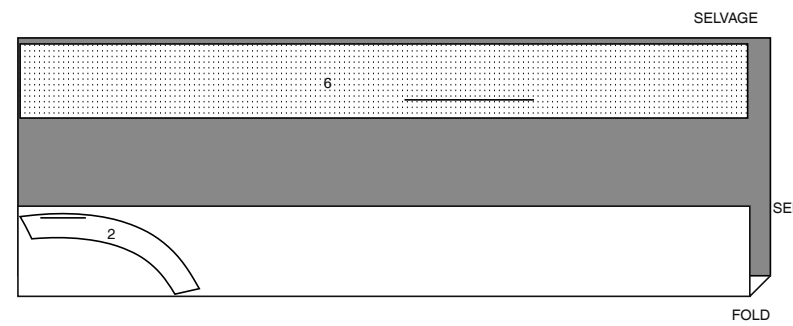
60" (150CM)
WITH NAP
ALL SIZES



INTERFACING A,B

USE PIECES 2 6

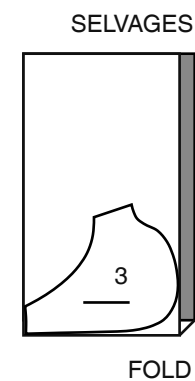
20" (51CM)
ALL SIZES



LINING A,B (POCKETS)

USE PIECES 3

45" (115CM)
WITHOUT NAP
ALL SIZES

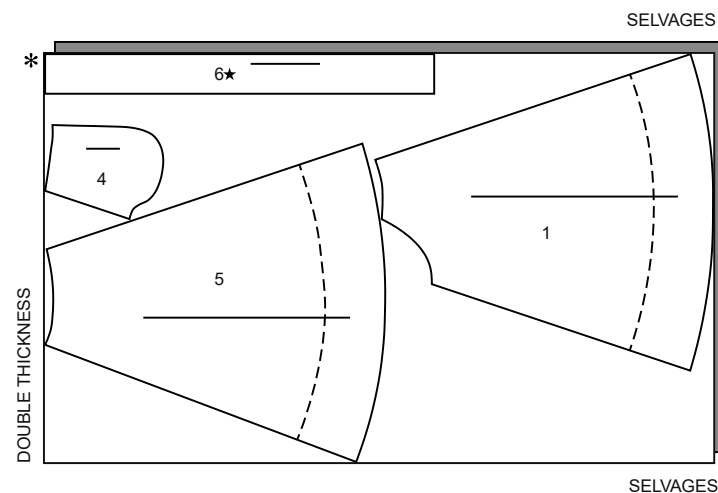


SKIRT B,C

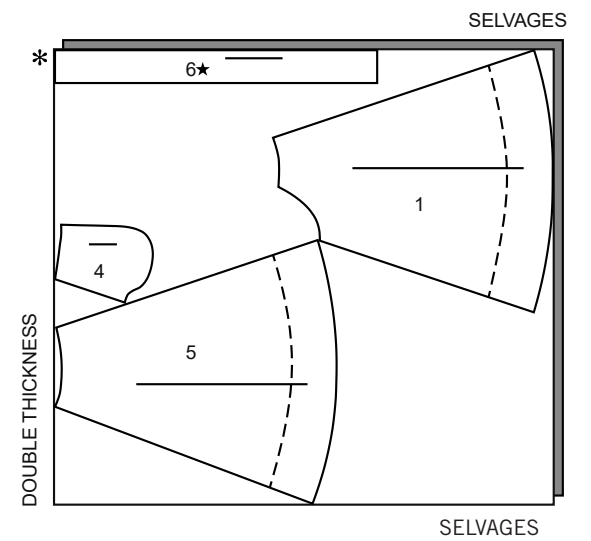
USE PIECES 1 4 5 6

NOTE: DASHED LINE SHOWN ON PATTERN PIECES INDICATES CUTTING LINE FOR SHORTER LENGTH.

45" (115CM)
WITH NAP
ALL SIZES



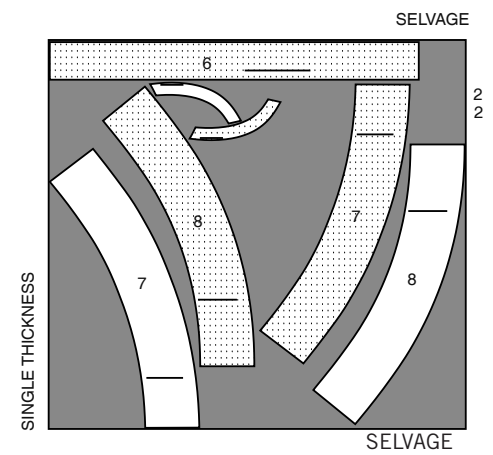
60" (150CM)
WITH NAP
ALL SIZES



INTERFACING C

USE PIECES 2 6 7 8

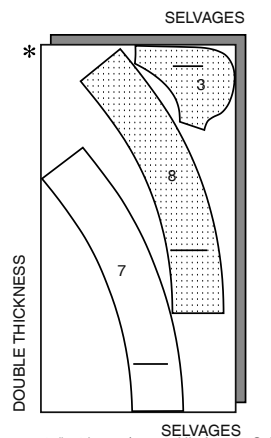
45" (115CM)
WITHOUT NAP
ALL SIZES



LINING C (POCKETS, HEM FACING)

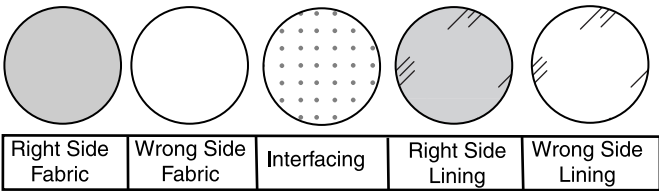
USE PIECES 3 7 8

45" (115CM)
WITH NAP
ALL SIZES



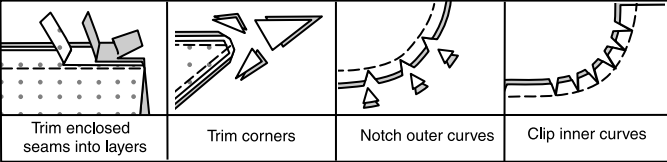
SEWING INFORMATION

FABRIC KEY



SEAM ALLOWANCES

Use 5/8" (1.5cm) seam allowances unless otherwise indicated.



PIN AND FIT

Pin or baste seams, **RIGHT SIDE TOGETHER**, matching notches. Fit garment before stitching major seams.

PRESS

Press seam allowances flat; then open unless otherwise stated. Clip where necessary so they lie flat.

GLOSSARY

Sewing methods in **BOLD TYPE** have Sewing Tutorial Video available. Scan QR CODE to watch videos:

INVISIBLE ZIPPER – See **Zippers: “sewing an invisible zipper”** video.

STAYSTITCH – See **Machine Stitches: “how to do stay stitching”** video.

STITCH IN THE DITCH – See **Machine Stitches: “how to stitch in the ditch”** video.

TOPSTITCH – See **Machine Stitches: “how to topstitch”** video.

TRIM SEAM – See **Seams: “how to trim, clip and layer seams”** video.

UNDERSTITCH – See **Machine Stitches: “how to understitch”** video.

SEWING TUTORIALS



Build your skills viewing short, easy-to-follow videos at simplicity.com/sewingtutorials

PATTERN PIECES WILL BE IDENTIFIED BY NUMBERS THE FIRST TIME THEY ARE USED.

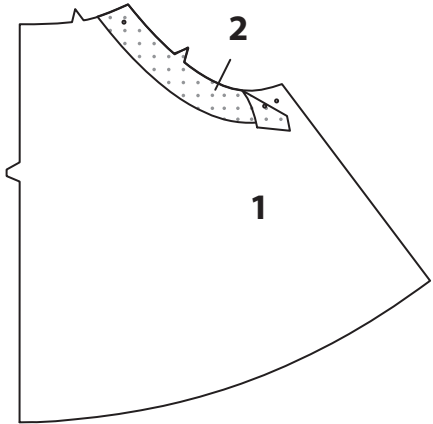
STITCH SEAMS WITH RIGHT SIDES TOGETHER UNLESS OTHERWISE STATED.

NOTE: Under each sub-heading, the first view will be illustrated, unless otherwise illustrated

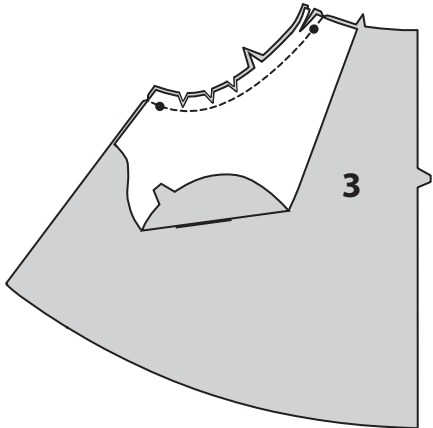
SKIRT A, B, C

FRONT

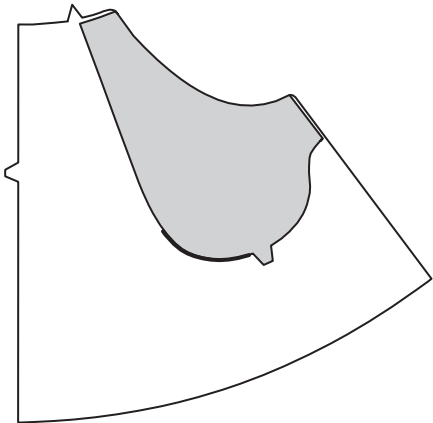
1. Fuse **POCKET INTERFACING (2)** to wrong side of each matching **FRONT (1) FABRIC** section, matching notches and dots, following manufacturer’s instructions.



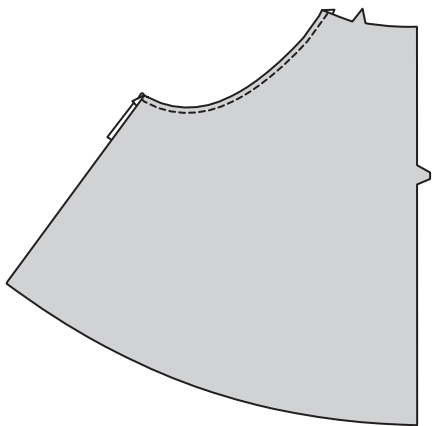
2. Pin **POCKET FACING (3)** to upper side edge of front, matching dots. Stitch; **TRIM SEAM.**



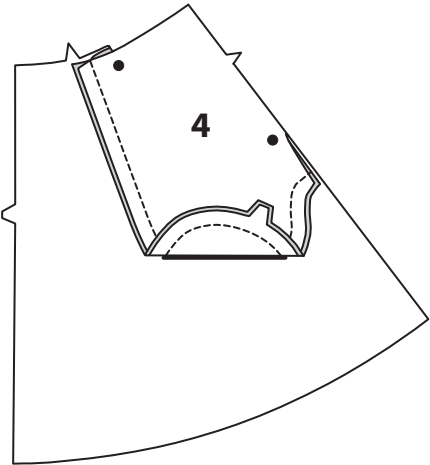
3. Turn pocket to inside; press.



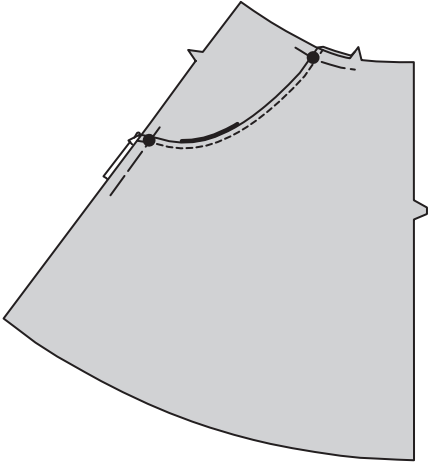
4. **TOPSTITCH** upper side edge of front.



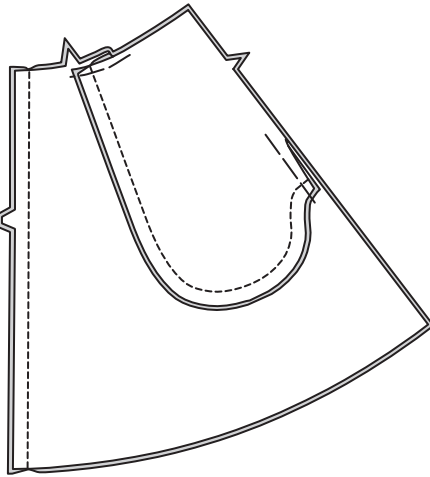
5. Stitch **SIDE FRONT AND POCKET (4)** section to pocket facing at outer edge, matching dots, keeping front free.



6. Baste upper and side edges.

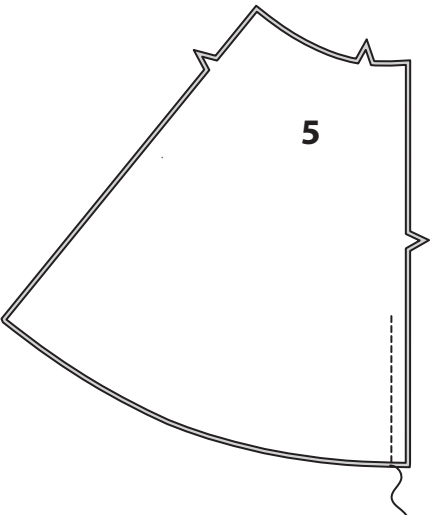


7. With **RIGHT** sides together, stitch skirt along center front.

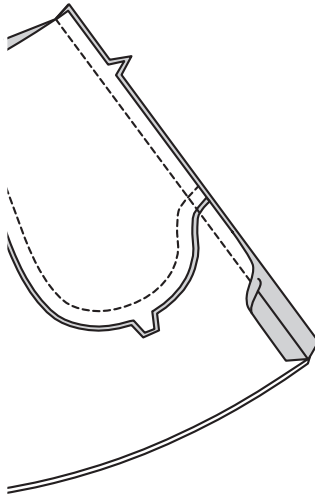


BACK

8. Stitch **BACK (5)** sections together at center back, from lower edge to within 3”(7.5cm) below notch.

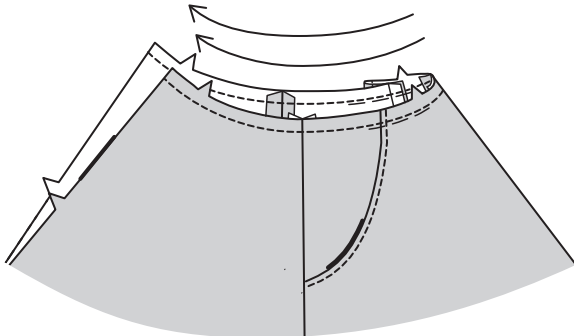


9. Stitch back to front at sides, **RIGHT** sides together.



WAISTBAND

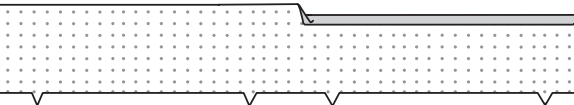
10. **STAYSTITCH** upper edge of skirt.



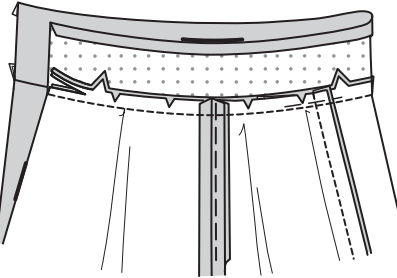
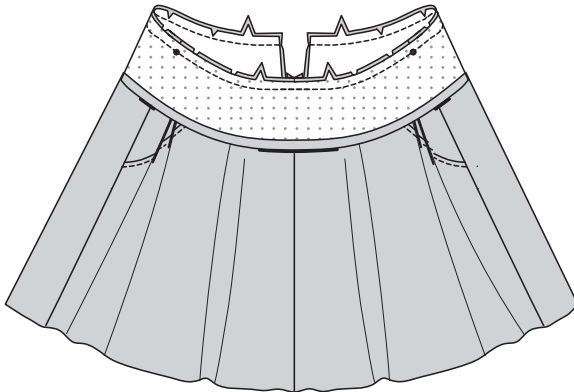
11. Fuse **INTERFACING** to wrong side of matching **WAISTBAND (6) FABRIC** section, following manufacturer’s instructions.



12. Press under 1/2”(1.3cm) on long unnotched edge of waistband.

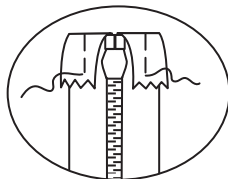


13. Pin waistband to upper edge of skirt, **RIGHT** sides together, matching notches, centers and dots to side seams, clipping skirt where necessary. Stitch; **TRIM SEAM.** Press seams toward waistband.

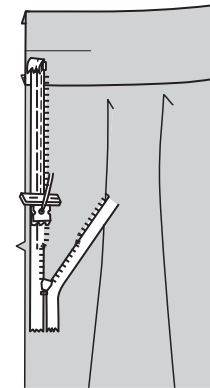


ZIPPER

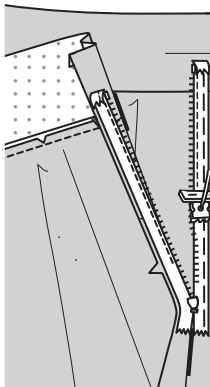
14. Turn in upper end of zipper tape, as shown; baste.



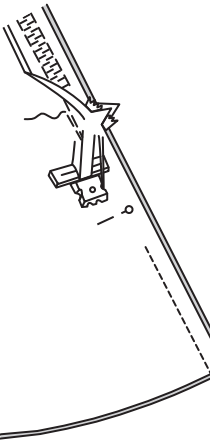
15. NOTE: Use special invisible zipper foot when stitching **INVISIBLE ZIPPER**. Open the zipper and press the tape using a cool iron. On **OUTSIDE**, pin **RIGHT** side of the zipper face down on the **RIGHT** side of the zipper opening. Have the coil along the seam line, the tape within the seam allowance and the top stop 1/4"(6mm) below foldline, as shown. Hand-baste along center of the tape. Position zipper foot at the top of the zipper with **RIGHT** groove of the foot over coil. Stitch along tape to the notch. Back-stitch to reinforce.



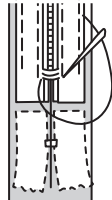
16. Pin the remaining half of the zipper to the **LEFT** side of the zipper opening in same manner. Make sure the upper and lower edges of the skirt are even. Hand-baste along the center of the tape. Position zipper foot at the top of the zipper with **LEFT** groove over the coil. Stitch along tape to the notch. Back-stitch to reinforce.



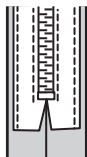
17. Close zipper and check that it is invisible from the **OUTSIDE**. Pull the free ends of the zipper tape away from the seam allowance. Pin remaining center back seam together below zipper. Position zipper foot all the way to the **LEFT** so the needle goes down through the outer notch of the foot. Start stitching seam 1/4"(6mm) above lowest stitch and slightly to the **LEFT**. Stitch seam for about 3"(7.5cm).



18. If the zipper is longer than the opening, using a strong thread, hand-sew a few small stitches across ends of coils at end of opening. Trim away lower end of zipper tape to within 5/8"(1.5cm) of hand-stitches.

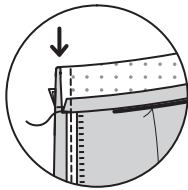


19. Stitch remainder of seam using your regular presser foot. If you prefer, open out each seam allowance at end of zipper and stitch tape to seam allowance.

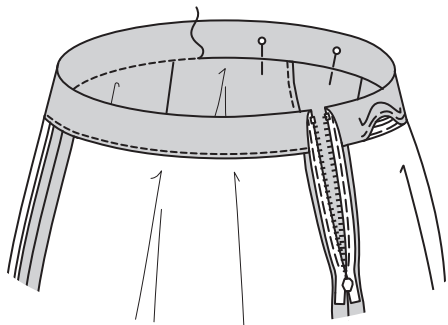


WAISTBAND FINISHING

20. With **RIGHT** sides together, fold waistband along foldline. Stitch across ends using a zipper foot; trim seam.



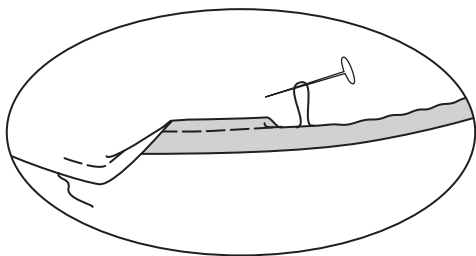
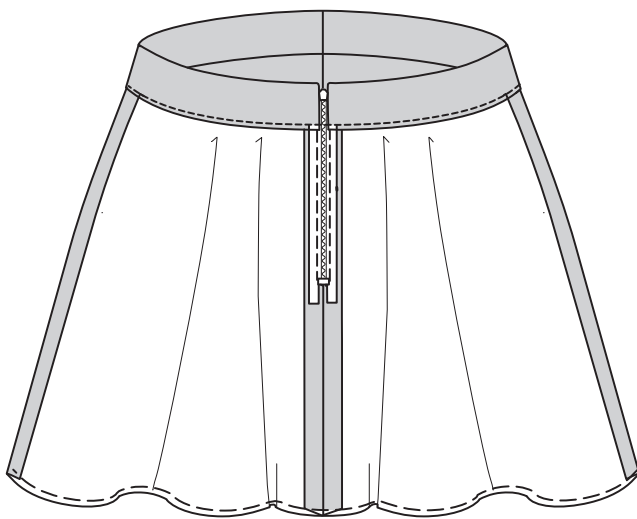
21. Turn **RIGHT** side out; press. Pin pressed edge just over seam. Working on the **RIGHT** side of the fabric, **STITCH- IN-THE DITCH**, (in the groove where the waistband joins the fabric), being sure to catch in the underneath layer of the waistband in the stitching.



FINISHING

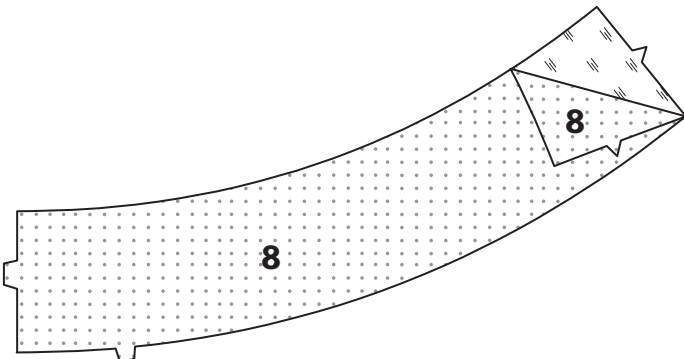
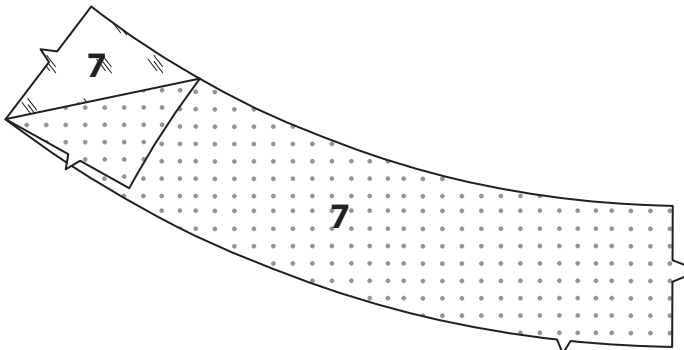
HEM A, B

22. Stitch 1/4"(6mm) from lower edge of skirt using long machine stitches, as shown. Turn up 5/8"(1.5cm) hem at lower edge of skirt, turning in 1/4"(6mm) on raw edge. Pull thread to ease in fullness. Stitch in place.

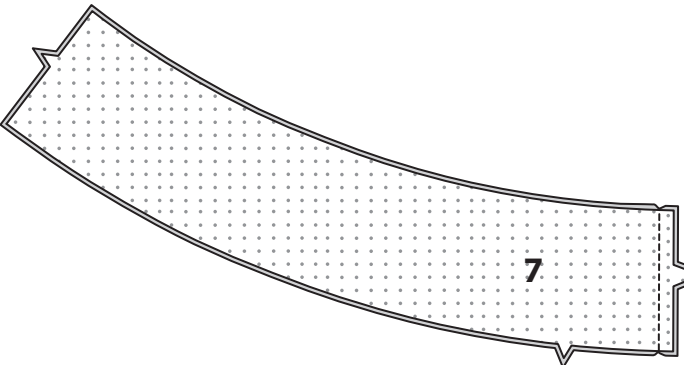


HEM FACING C

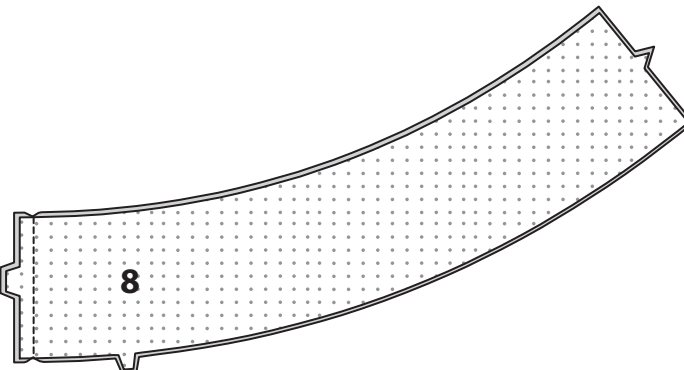
23. Fuse **INTERFACING** to wrong side of each matching **LINING** (7) and (8) section, following manufacturer's instructions.



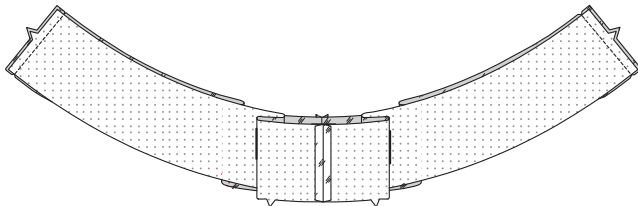
24. With **RIGHT** sides together, pin **FRONT HEM FACING** (7) sections. Stitch center front seam.



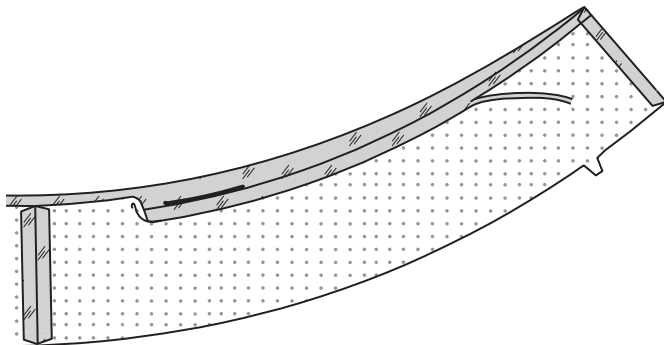
25. With **RIGHT** sides together, pin **BACK HEM FACING** (8) sections. Stitch center back seam.



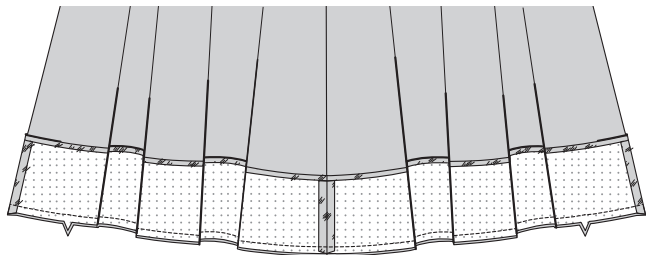
26. Stitch back facing to front facing at sides.



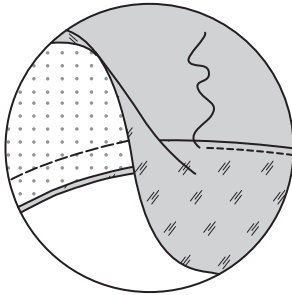
27. Press under 5/8"(1.5cm) on unnotched edge of facing. Trim pressed edge to 3/8"(1cm).



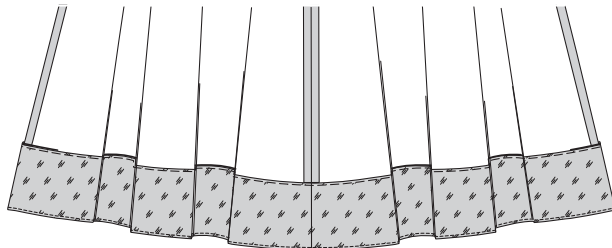
28. With **RIGHT** sides together, pin facing to lower edge of skirt, matching centers and seams. Stitch; **TRIM SEAM**.



29. **UNDERSTITCH** facing.



30. Turn facing to inside, matching centers and seams; press. Baste facing in place close to pressed edge.



31. **TOPSTITCH** facing along basting.



HOOK AND EYE A, B, C

32. Sew hook and eye to back opening edges above zipper, as shown.

