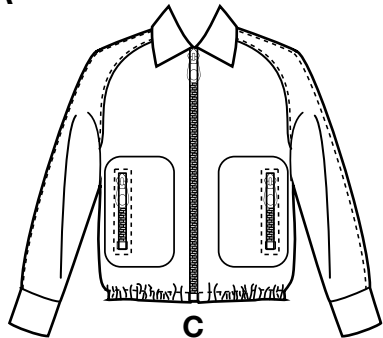
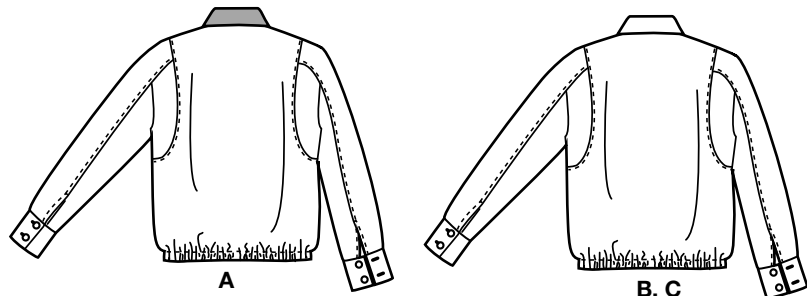


A

B



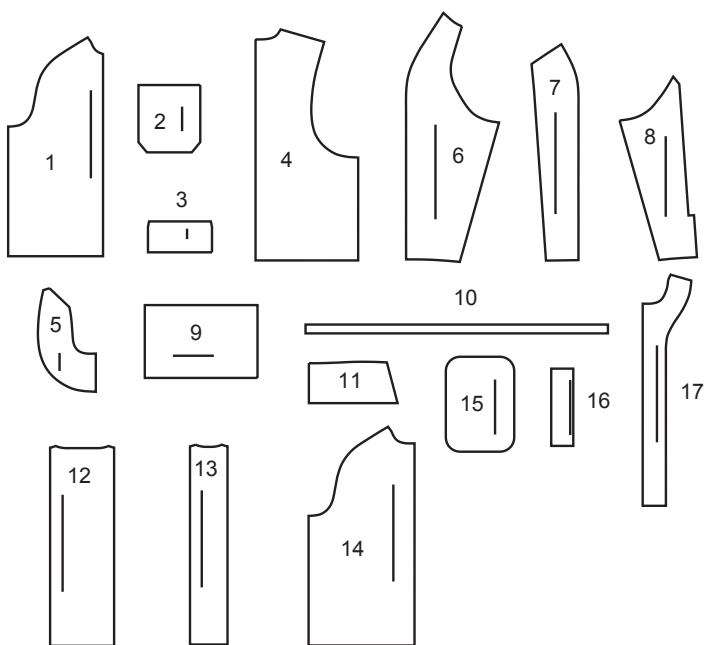
C



A

B, C

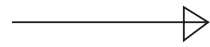
17 PATTERN PIECES



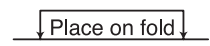
1 FRONT - A,B
2 POCKET - A,B
3 FLAP - A,B
4 BACK - A,B,C
5 SIDE BACK - A,B,C
6 SLEEVE FRONT - A,B,C
7 SLEEVE BACK - A,B,C
8 SLEEVE BACK - A,B,C (SIDE)
9 CUFF - A,B,C

10 GUIDE FOR ELASTIC - A,B,C
11 COLLAR - A,B,C
12 RIGHT FRONT BAND - A,B
13 LEFT FRONT BAND - A,B
14 FRONT - C
15 POCKET - C
16 POCKET FACING - C
17 FRONT FACING - C

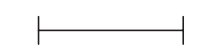
PATTERN MARKINGS



GRAINLINE: Place on straight grain of fabric, parallel to selvage or fold.



FOLDLINE: Place line on fold of fabric.



BUTTONHOLE MARKING: Indicates exact length and placement of buttonholes.



BUTTON MARKING: Indicates button placement.



NOTCHES AND SYMBOLS: For matching seams and construction details.



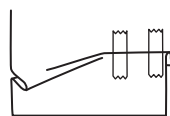
Indicates the Bustline, Waistline, Hip and/or Biceps. Measurements refer to circumference of Finished Garment (Body Measurement + Wearing Ease + Design Ease). Adjust pattern if necessary. The measurement excludes pleats, tucks, darts and seam allowances.

SEAM ALLOWANCE: 5/8" (1.5cm) included unless otherwise indicated, but not printed on tissue.

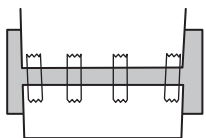
ADJUST IF NECESSARY

Lengthen or Shorten at adjustment lines (==) or where indicated on pattern. If substantial length is added, you may need to purchase additional fabric.

TO SHORTEN: Crease along adjustment line. Make a fold half the amount needed. Tape in place.



TO LENGTHEN: Slash between adjustment lines. Spread amount as needed, keeping edges parallel. Tape over paper.



When Alteration lines are not on tissue, lengthen or shorten at lower edge.

CUTTING AND MARKING

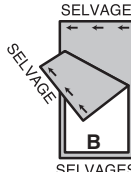
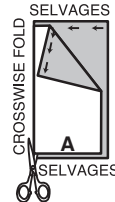
SHRINK FABRIC if not labeled pre-shrunk. Press.

CIRCLE LAYOUT for View, Size, Fabric Width.

Use **WITH NAP** layout for fabrics with one-way designs, nap, pile or surface shading. Because most knits have surface shading, a with nap layout is used.

For **DOUBLE THICKNESS (WITH FOLD)** - fold fabric with right sides together.

*** DOUBLE THICKNESS (WITHOUT FOLD)** - For fabrics with nap, fold fabric crosswise, right sides together. Mark as shown. Cut along crosswise fold of fabric (A). Turn upper layer 180° so arrows go in same direction and place over lower layer, right sides together (B).



For **SINGLE THICKNESS** - place fabric right side up. (For Fur Pile fabrics, place pile side down.)

★ Cut other pieces first, allowing enough fabric to cut this piece. Open fabric. For "Cut 1" pieces, cut piece once on single layer of fabric with piece face up on right side of fabric.

Pattern may have cutting lines for several sizes. Select the proper cutting line or pattern pieces for your size.

Before **CUTTING** place all pieces on fabric according to layout. Pin. (**Layouts show approximate position of pattern pieces; position may vary according to your pattern size.**) Cut **ACCURATELY**, cutting notches outward.

Before removing pattern, **TRANSFER MARKINGS** and lines of construction to Wrong Side of fabric, using the Pin and Chalk Pencil method or Tracing Paper and Dressmaker Wheel. Markings needed on right side of fabric should be thread traced.

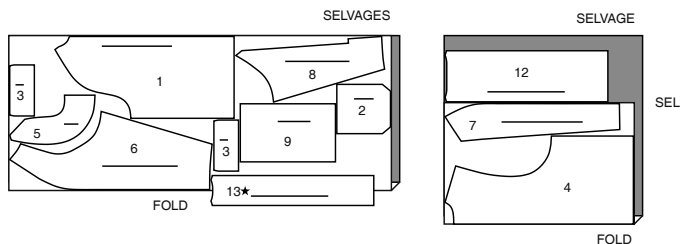
NOTE: Broken-line boxes (a! b! c!) in layouts represent pieces cut by measurements provided.

CUTTING LAYOUTS

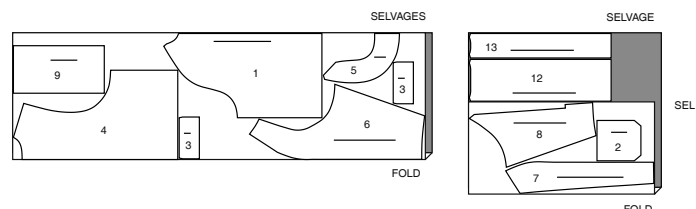
JACKET A

USE PIECES: 1 2 3 4 5 6 7 8 9 12 13

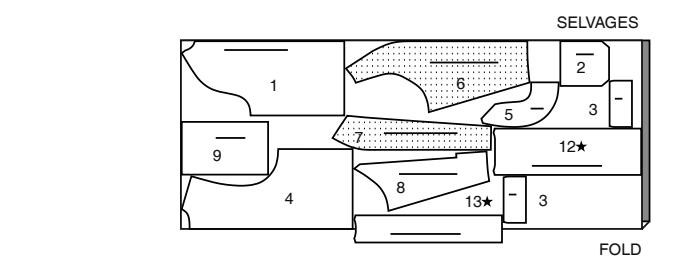
45" (115 CM)
WITH NAP
SIZES 8 10 12 14



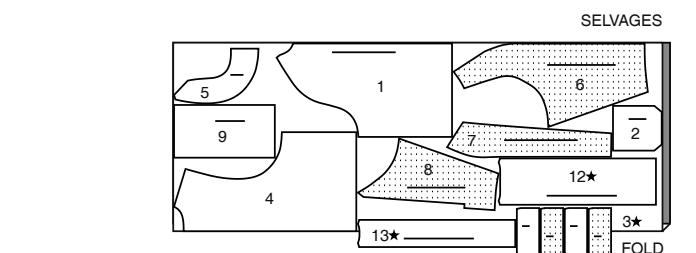
45" (115 CM)
WITH NAP
SIZES 16 18 20 22 24 26



60" (150 CM)
WITH NAP
SIZES 8 10 12 14



60" (150 CM)
WITH NAP
SIZES 16 18 20 22 24 26

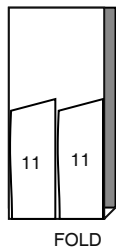


CONTRAST (COLLAR)

USE PIECE: 11

45" (115 CM)
WITH NAP
ALL SIZES

SELVAGES



60" (150 CM)
WITH NAP
ALL SIZES

FOLD

FOLD

FOLD

FOLD

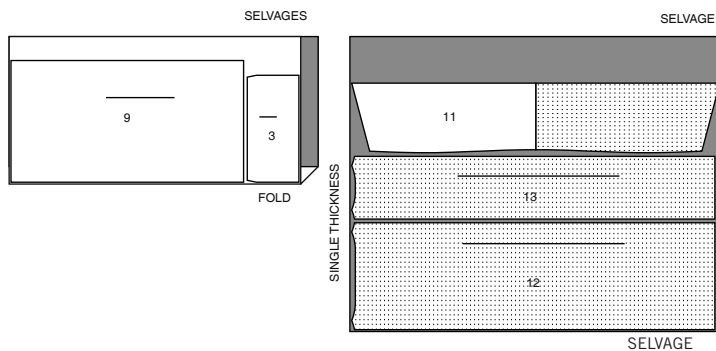
FOLD

FOLD

INTERFACING A,B

USE PIECES: 3 9 11 12 13

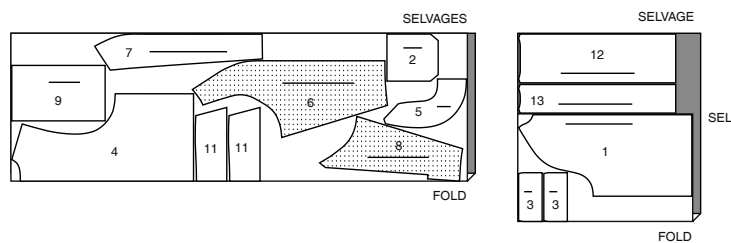
20" (51 CM)
ALL SIZES



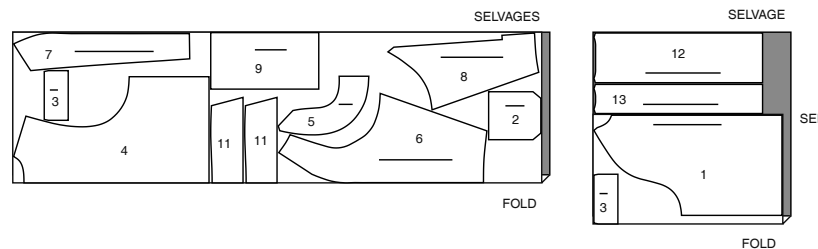
JACKET B

USE PIECES: 1 2 3 4 5 6 7 8 9 11 12 13

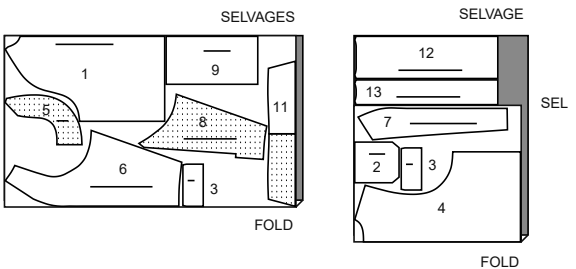
45" (115 CM)
WITH NAP
ALL SIZES



45" (115 CM) WITH NAP
SIZES 18 20 22 24 26



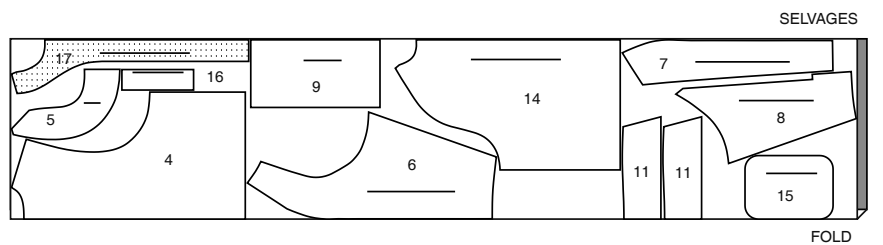
60" (150 CM)
WITH NAP
ALL SIZES



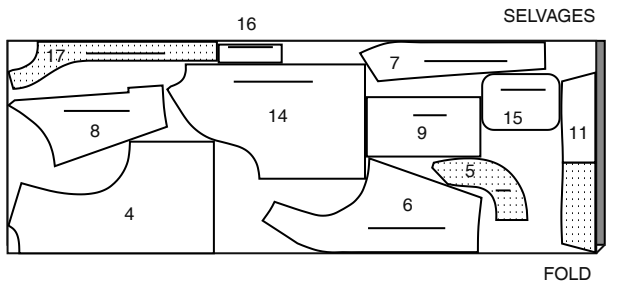
JACKET C

USE PIECES: 4 5 6 7 8 9 11 14 15 16 17

45" (115 CM) WITH NAP
ALL SIZES



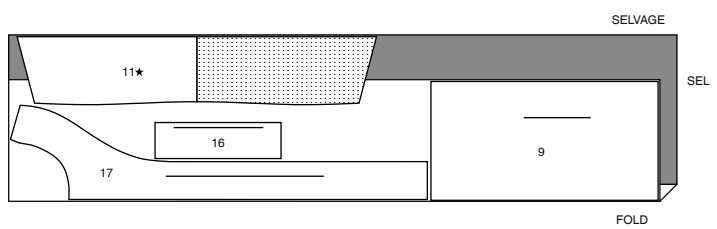
60" (150 CM)
WITH NAP
ALL SIZES



INTERFACING C

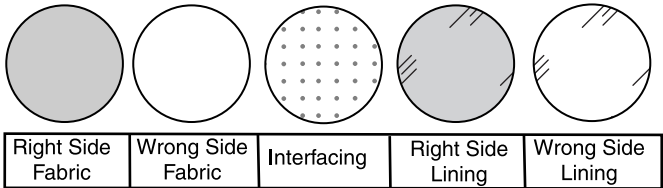
USE PIECES: 9 11 16 17

20" (51 CM)
ALL SIZES



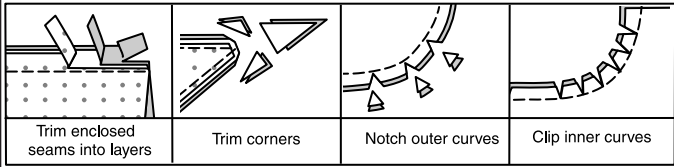
SEWING INFORMATION

FABRIC KEY



SEAM ALLOWANCES

Use 5/8" (1.5cm) seam allowances unless otherwise indicated.



PIN AND FIT

Pin or baste seams, RIGHT SIDE TOGETHER, matching notches. Fit garment before stitching major seams.

PRESS

Press seam allowances flat; then open unless otherwise stated. Clip where necessary so they lie flat.

GLOSSARY

Sewing methods in **BOLD TYPE** have Sewing Tutorial Video available. Scan **QR CODE** to watch videos:

EDGESTITCH - See “**how to edgestitch**” video.

FINISH – See **Seams: “how to Finish seam allowances”** video.

NARROW HEM - See “**how to Narrow Hem**” video.

REINFORCE SEAMS – See **Machine Stitches: “how to reinforce seams”** video.

SLIPSTITCH – See **Hand Stitching: “how to slip stitch”** video.

STAYSTITCH - See “**how to do Stay-stitching**” video.

TACK – See **Hand Stitching: “how to tack”** video.

TOPSTITCH - See “**how to Topstitch**” video.

TRIM – See **Seams: “how to trim, clip and layer seams”** video.

SEWING TUTORIALS



Build your skills viewing short, easy-to-follow videos at [simplicity.com/sewingtutorials](https://www.simplicity.com/sewingtutorials)

PATTERN PIECES WILL BE IDENTIFIED BY NUMBERS THE FIRST TIME THEY ARE USED.

STITCH SEAMS WITH RIGHT SIDES TOGETHER UNLESS OTHERWISE STATED.

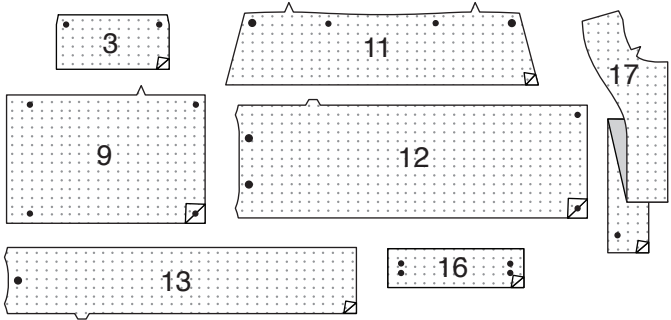
JACKET A, B, C

NOTE: After each seam is stitched, **FINISH** all visible raw edges of seam allowances. Finishing for seams will not be shown in the following illustrations.

NOTE: Under each sub-heading, the first View will be illustrated, unless otherwise indicated

INTERFACING

1. Pin INTERFACING to wrong side of each matching FABRIC section. Fuse, following manufacturer's instructions.

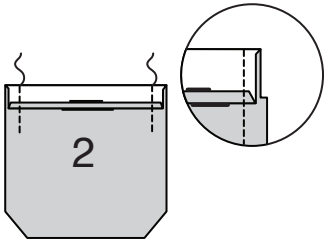


FRONT

VIEWS A, B:

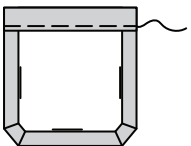
2. Turn in 1/4"(6mm) on upper edge of each POCKET (2). Press.

Turn upper edge to outside along foldline. Stitch ends. Trim.

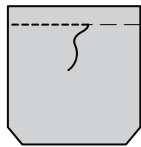


3. Turn upper edge of pocket to inside, turning in remaining seam allowances, diagonally folding corners. Press.

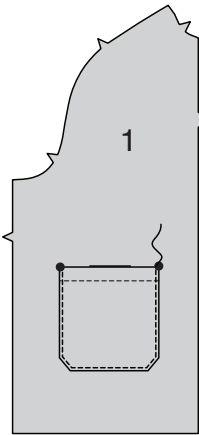
Baste close to inner pressed edge.



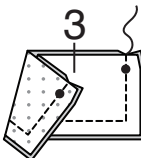
4. **TOPSTITCH** along basting.



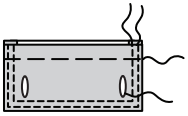
5. Pin pocket to FRONT (1), matching large dots. **EDGESTITCH** side and lower edges, reinforcing upper ends.



6. For each side, stitch one interfaced and one uninterfaced FLAP (3) section together, leaving upper edge open, as shown. **TRIM.**

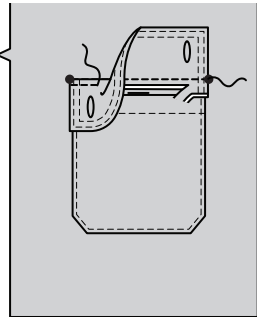


7. Turn. Press. Baste raw edges together. **EDGESTITCH** and **TOPSTITCH** finished edges. Make buttonholes in flap at markings.



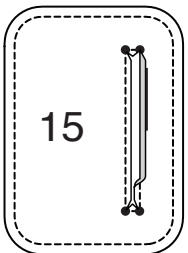
8. Pin flap to front, matching small dots, placing seamline along flap line. Stitch. Trim flap seam allowance to a scant 1/4"(6mm), being careful not to cut front.

Turn flap down over seam. Press. **TOPSTITCH** upper edge of flap.

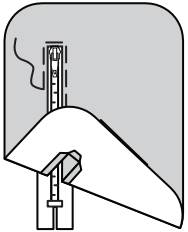


VIEW C:

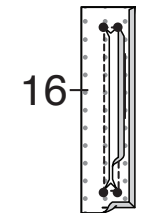
9. **STAYSTITCH** outer edge of POCKET (15). **REINFORCE** pocket along stitching lines. Slash along line between stitching, clipping diagonally to small dots. Turn in seam allowances along stitching.



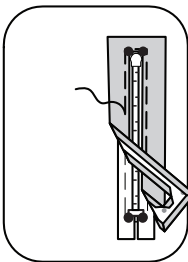
10. Center closed zipper, face up, under pocket opening edges, placing zipper stop at lower end, as shown. Baste.



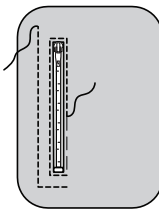
11. **REINFORCE** POCKET FACING (16) along stitching lines. Slash along line between stitching, clipping diagonally to small dots. Turn in seam allowances along stitching. Press under 1/4" (6mm) along outer raw edges.



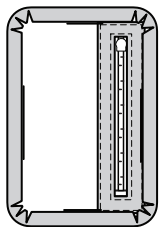
12. On INSIDE, with WRONG sides together, pin pocket facing to pocket, over zipper, matching small dots. Baste.



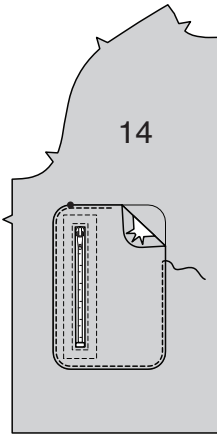
13. **EDGESTITCH** pocket opening, as shown. Stitch again 5/8" (1.5cm) from edge stitching.



14. Turn in seam allowances along outer edge of pocket, clipping pocket seam allowances where necessary. Press.

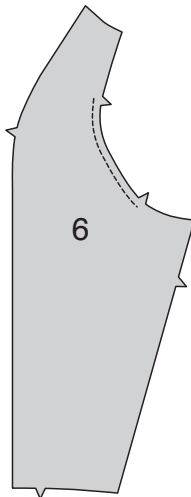


15. With RIGHT sides up, pin pocket to FRONT (14), as shown, matching small dot, placing pressed edges along pocket line. **EDGESTITCH** pressed edges.

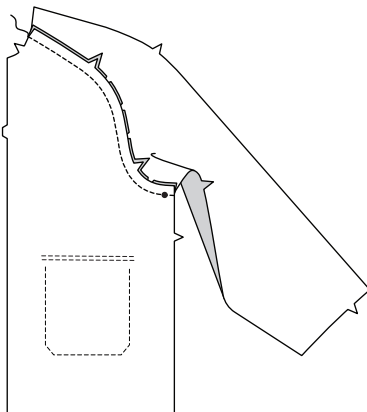


SLEEVE AND BACK

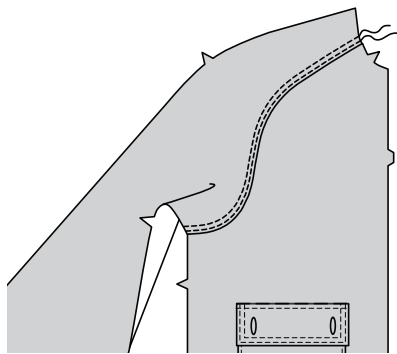
16. **STAYSTITCH** inner curved edge of SLEEVE FRONT (6) between notches, as shown.



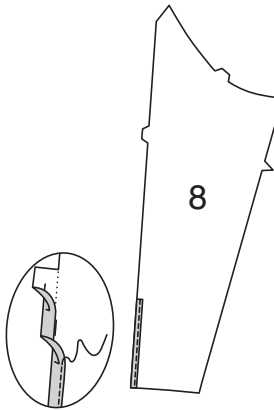
17. With RIGHT sides together, pin sleeve to front, matching small dots and notches, clipping sleeve front where necessary. Baste. Stitch. Press seam toward sleeve front.



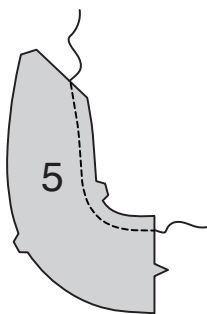
18. **EDGESTITCH** and **TOPSTITCH** sleeve front seam.



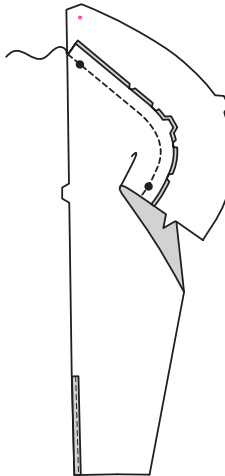
19. Make **NARROW HEM** at lower extension edge of SLEEVE BACK (8).



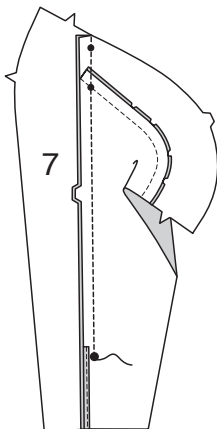
20. **REINFORCE** inner curved edge of SIDE BACK (5), as shown.



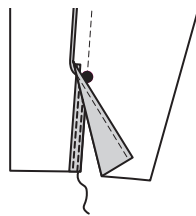
21. With RIGHT sides together, pin side back to upper edge of sleeve back, matching small dots and notches, clipping side back where necessary. Baste. Stitch. Press seam toward side back.



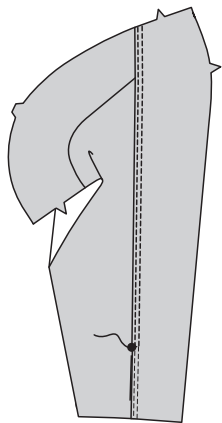
22. With RIGHT sides together, pin SLEEVE BACK (7) to side back and sleeve back, as shown, matching symbols and notches. Stitch, ending stitching at large dot. Press seam toward sleeve back, as shown.



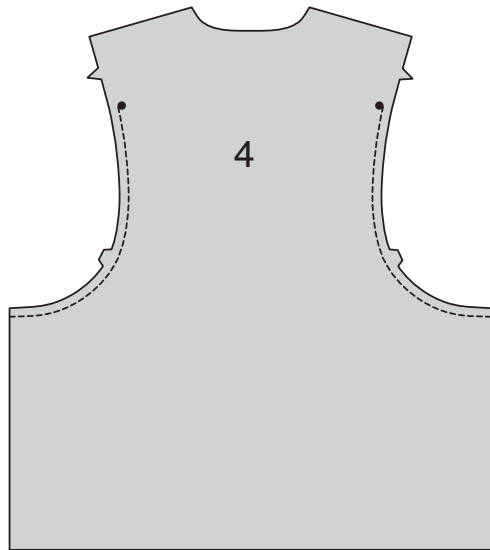
23. Make **NARROW HEM** on lower opening edge of sleeve back, tapering to nothing above large dot. **EDGESTITCH** hem opening edge, as shown.



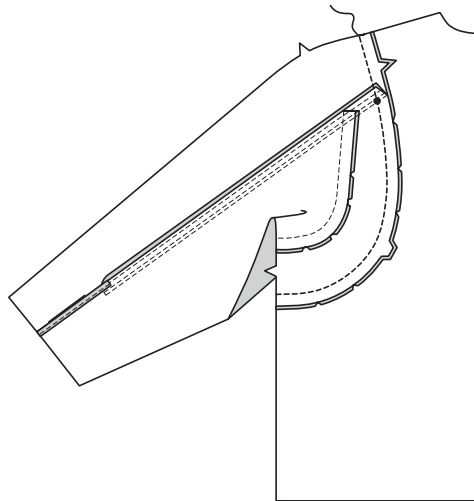
24. **EDGESTITCH** and **TOPSTITCH** sleeve back seam, pivoting stitching to seam at large dot.



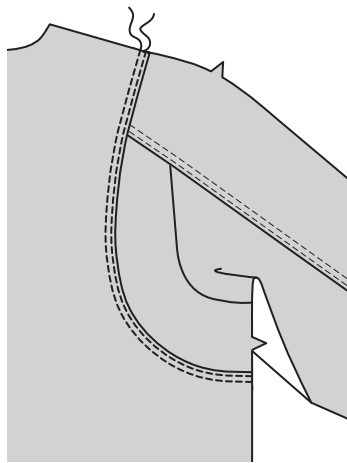
25. **STAYSTITCH** side curved edges of **BACK (4)**, from side edge to small dot, as shown.



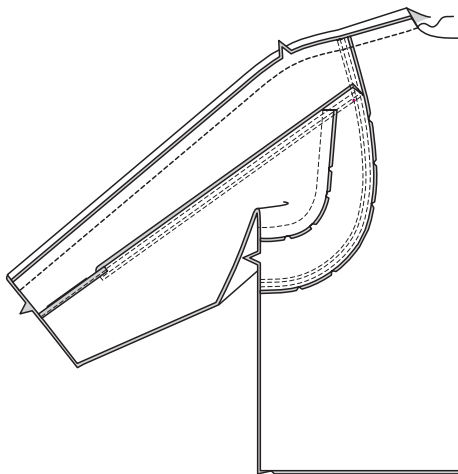
26. With **RIGHT** sides together, pin side back and sleeve back section to back, matching small dots and notches, clipping back where necessary. Baste. Stitch. Press seam toward back.



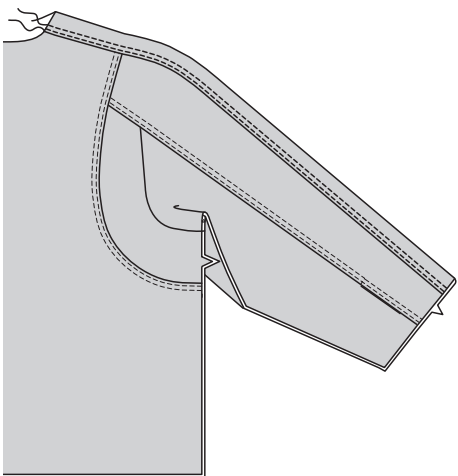
27. **EDGESTITCH** and **TOPSTITCH** back seam.



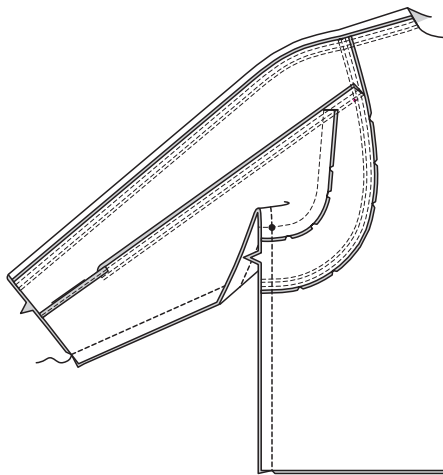
28. Stitch fronts to back at overarm edges, matching notches. Press seams toward sleeve front.



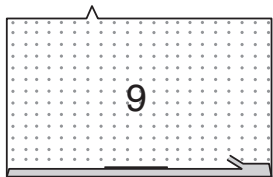
29. **EDGESTITCH** and **TOPSTITCH** sleeve front seam.



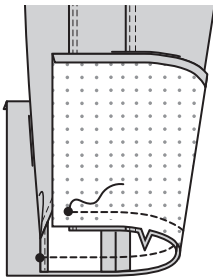
30. Pin front and back together at sides; pin sleeve edges together. Stitch in one continuous seam, pivoting at small dot.



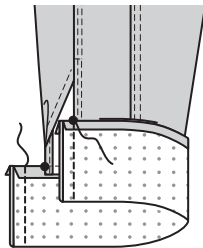
31. Turn in seam allowance on long unnotched edge of **CUFF (9)**. Press. Trim pressed seam allowance to 3/8"(1cm).



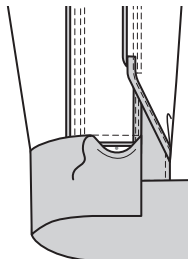
32. Pin cuff to sleeve, placing small dots at opening edges and matching notches. Stitch. Trim. Press seam toward cuff, pressing in remainder of seam allowances on extension edge.



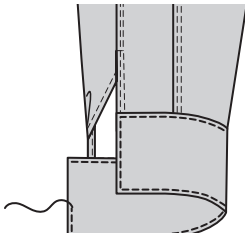
33. With **RIGHT** sides together, fold cuff along foldline. Stitch ends. Trim.



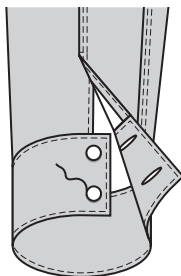
34. Turn. Press. **SLIPSTITCH** pressed edge over seam and extension edges together.



35. **EDGESTITCH** cuff, as shown.



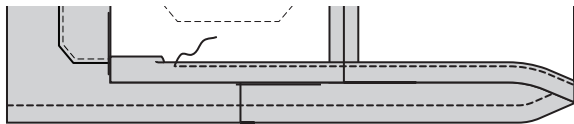
36. Make buttonholes in cuff at markings. Sew buttons to cuff at small dots.



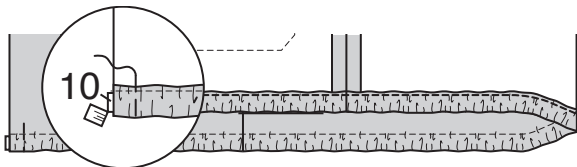
FINISHING

VIEWS A, B:

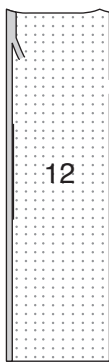
37. To form casing for elastic, turn in 1 1/8"(?) on lower edge of jacket, turning in 1/4"(6mm) on raw edge; press. Stitch, as shown.



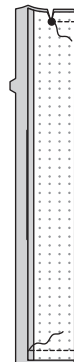
38. Cut a piece of elastic, the length of **GUIDE FOR ELASTIC (10)**. Insert elastic through opening, having ends even with opening edges. Baste ends. Trim elastic ends.



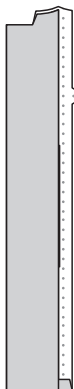
39. Turn in seam allowance on long unnotched edge of **RIGHT FRONT BAND (12)**. Press. Trim pressed seam allowance to 3/8"(1cm).



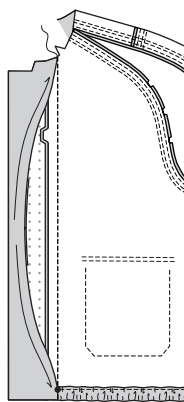
40. With **RIGHT** sides together, fold right front band along foldline. Stitch upper edge from fold to large dot. Clip to large dot. Stitch lower edge. Trim.



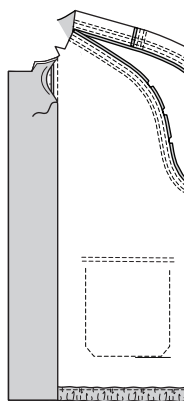
41. Turn. Press.



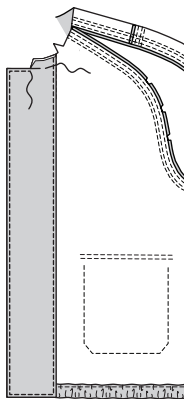
42. Pin right front band to right front opening edge, matching notches and small dot. Stitch. Trim. Press seam toward band.



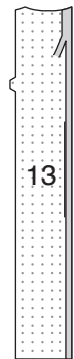
43. **SLIPSTITCH** pressed edge over seam. Baste upper edges.



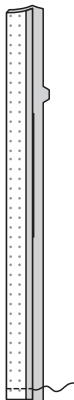
44. **EDGESTITCH** band, as shown, ending stitching at clip.



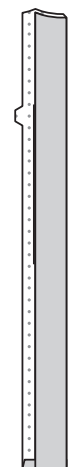
45. Turn in seam allowance on long unnotched edge of **LEFT FRONT BAND (13)**. Press. Trim pressed seam allowance to 3/8"(1cm).



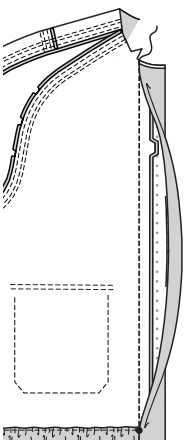
46. With **RIGHT** sides together, fold left front band along foldline. Stitch lower edge. Trim.



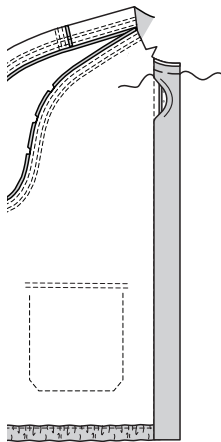
47. Turn. Press. Baste upper edges.



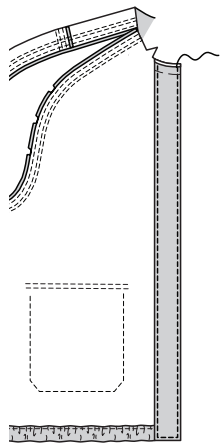
48. Pin left front band to left front opening edge, matching notches and small dot. Stitch. Trim. Press seam toward band.



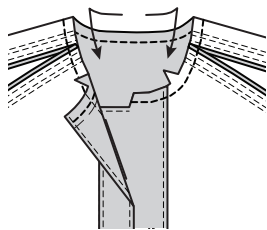
49. **SLIPSTITCH** pressed edge over seam. Baste upper edges.



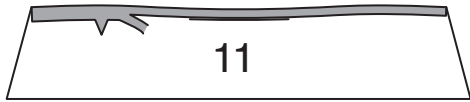
50. **EDGE****STITCH** band, as shown.



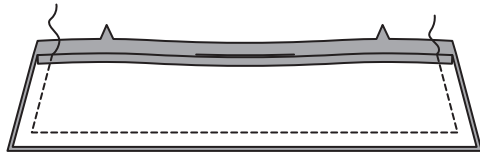
51. **STAY****STITCH** neck edge.



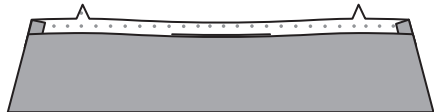
52. Turn in seam allowance on notched edge of uninterfaced **COLLAR** (11) section. Press. Trim pressed seam allowance to 3/8”(1cm).



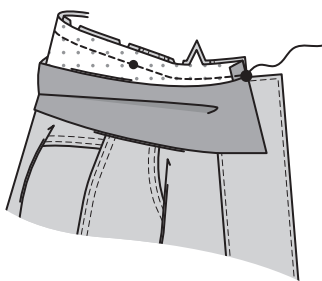
53. With **RIGHT** sides together, pin collar sections together, matching centers. Stitch, leaving notched edge open. Trim.



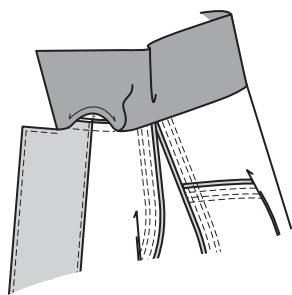
54. Turn. Press.



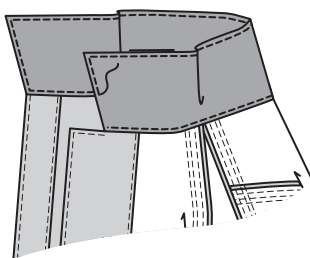
55. Pin collar to neck edge, matching centers, placing inner small dots at shoulder seams, matching large dots, clipping neck edge where necessary. Baste. Stitch. Trim. Press seam toward collar.



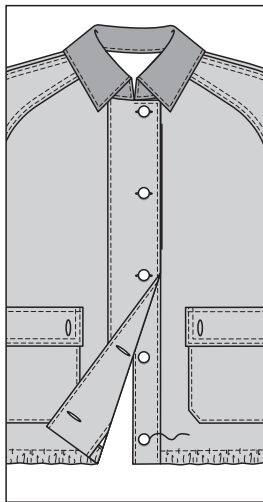
56. **SLIP****STITCH** pressed edge over seam.



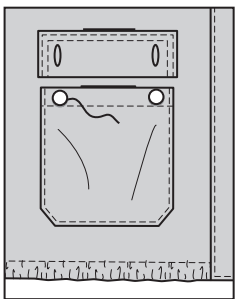
57. **EDGE****STITCH** collar.



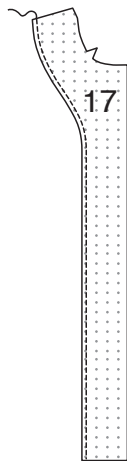
58. Make buttonholes in right front band at markings. Sew buttons to left front band at small dots.



59. Sew buttons to pockets at small dots.

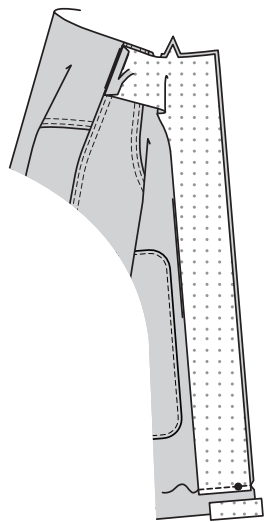


VIEW C:
60. **FINISH** inner edge of **FRONT FACING** (17).

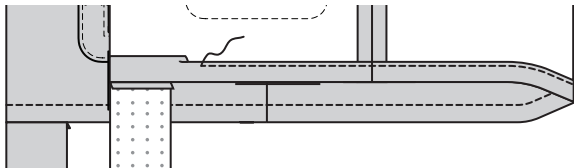


61. Turn in seam allowance on shoulder edge of front facing. Press. Trim pressed seam allowance to 3/8”(1cm).

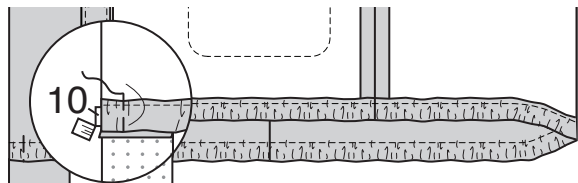
With **RIGHT** sides together, pin front facings to front, having front edges even, matching small dots. Stitch across facing 1 1/8”(2.9cm) above lower edge. Trim facing close to stitching.



62. To form casing for elastic, turn in 1 1/8”(2.9cm) on lower edge of jacket, turning in 1/4”(6mm) on raw edge; press. Stitch, as shown, keeping facing free.

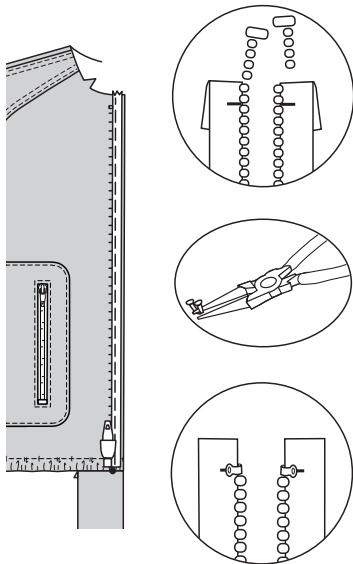


63. Cut a piece of elastic, the length of guide for **ELASTIC** (10). Insert elastic through opening, having ends even with opening edges. Baste ends.

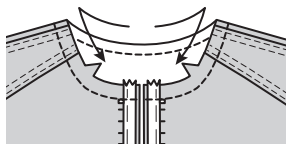


64. **NOTE:** It may be necessary to shorten zipper. To make new zipper stop, place closed zipper along opening edge, placing zipper stop at large dot Mark placement of new zipper stop 1/8”(3mm) below seamline.

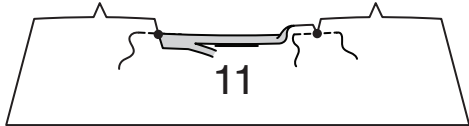
Remove teeth above marking for new zipper stop. Bend a straight metal eye with pliers and sew securely to each tape at new marking. Open and separate zipper. On outside, pin zipper, face down, along front opening edges, placing lower stop at small dot and zipper teeth a scant 1/4”(6mm) over seamline. Baste along seamline.



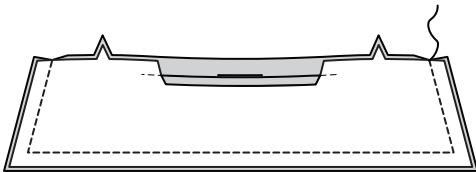
65. **STAY****STITCH** neck edge.



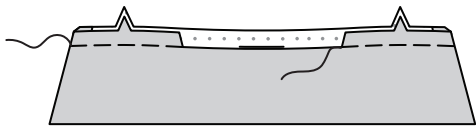
66. **REINFORCE** uninterfaced collar (7) section through small dots. Clip to small dots. Turn in seam allowance between clips, as shown. Trim pressed seam allowance to 3/8”(1cm).



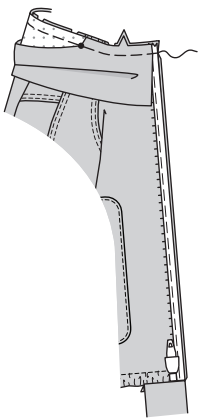
67. With **RIGHT** sides together, pin collar sections together, matching centers. Stitch, leaving notched edge open. Trim.



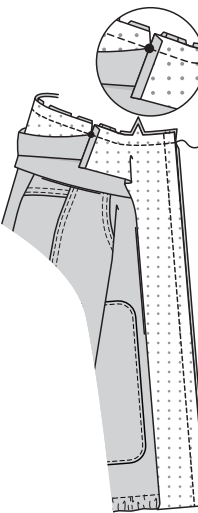
68. Turn. Press. Baste raw edges.



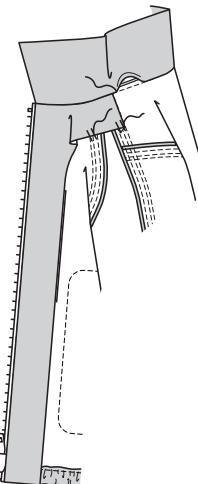
69. Pin collar to neck edge, matching centers, placing inner small dots at shoulder seams, clipping neck edge where necessary. Baste.



70. With **RIGHT** sides together, pin front facings to fronts, over zipper, having raw edges even. Stitch front edges, using a zipper foot. Stitch entire neck edge, keeping pressed edge free. Clip neck seam allowances at shoulder seams. Trim neck edge. Press seam toward collar between clips.



71. Turn facings to **INSIDE**. Press. **TACK** facings at shoulders. **SLIP****STITCH** pressed edge of collar over seam.



72. **EDGE****STITCH** collar and zipper opening.

