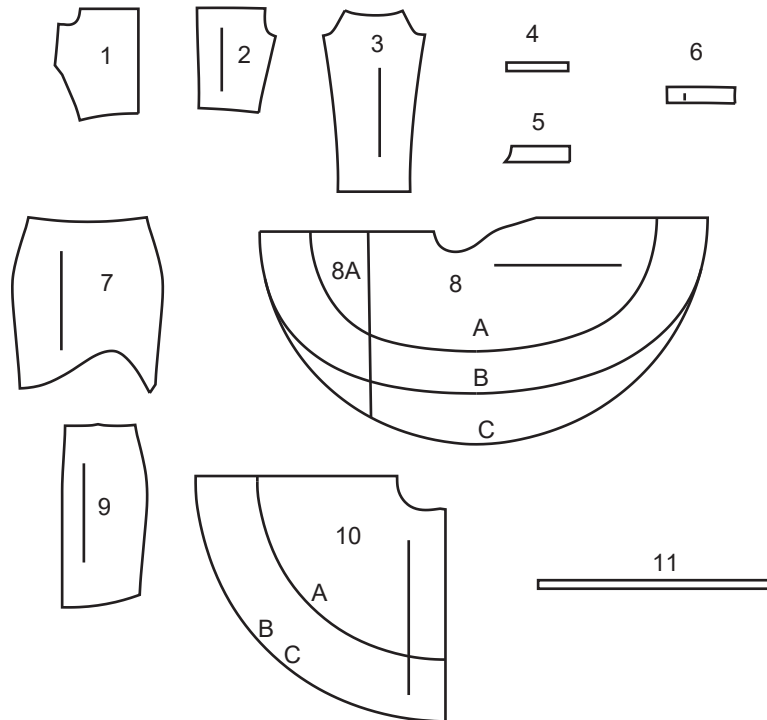
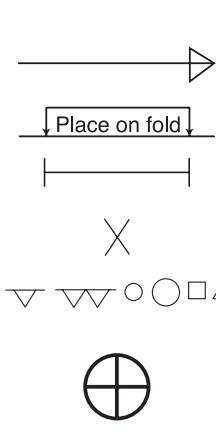


11 PATTERN PIECES



- 1 BODICE FRONT - A,B,C
- 2 BODICE BACK - A,B,C
- 3 SLEEVE - A,B,C
- 4 GUIDE FOR ELASTIC - A,B,C
- 5 BODICE FRONT FACING - A,B,C
- 6 BODICE BACK FACING - A,B,C
- 7 SKIRT FRONT - A,B,C
- 8(8A) FRONT FLOUNCE - A,B,C
- 9 SKIRT BACK - A,B,C
- 10 BACK FLOUNCE - A,B,C
- 11 GUIDE FOR ELASTIC - A,B,C



PATTERN MARKINGS

GRAINLINE: Place on straight grain of fabric, parallel to selvage or fold.

FOLDLINE: Place line on fold of fabric.

BUTTONHOLE MARKING: Indicates exact length and placement of buttonholes.

BUTTON MARKING: Indicates button placement.

NOTCHES AND SYMBOLS: For matching seams and construction details.

Indicates the Bustline, Waistline, Hip and/or Biceps. Measurements refer to circumference of Finished Garment (Body Measurement + Wearing Ease + Design Ease). Adjust pattern if necessary. The measurement excludes pleats, tucks, darts and seam allowances.

SEAM ALLOWANCE: 5/8" (1.5cm) included unless otherwise indicated, but not printed on tissue.

ADJUST IF NECESSARY

Lengthen or Shorten at adjustment lines (==) or where indicated on pattern. If substantial length is added, you may need to purchase additional fabric.

TO SHORTEN: Crease along adjustment line. Make a fold half the amount needed. Tape in place.

TO LENGTHEN: Slash between adjustment lines. Spread amount as needed, keeping edges parallel. Tape over paper.

When Alteration lines are not on tissue, lengthen or shorten at lower edge.

CUTTING AND MARKING

SHRINK FABRIC if not labeled pre-shrunk. Press.

CIRCLE LAYOUT for View, Size, Fabric Width.

Use **WITH NAP** layout for fabrics with one-way designs, nap, pile or surface shading. Because most knits have surface shading, a with nap layout is used.

For **DOUBLE THICKNESS (WITH FOLD)** - fold fabric with right sides together.

*** DOUBLE THICKNESS (WITHOUT FOLD)** - For fabrics with nap, fold fabric crosswise, right sides together. Mark as shown. Cut along crosswise fold of fabric (A). Turn upper layer 180° so arrows go in same direction and place over lower layer, right sides together (B).

For **SINGLE THICKNESS** - place fabric right side up. (For Fur Pile fabrics, place pile side down.)

★ Cut other pieces first, allowing enough fabric to cut this piece. Open fabric. For "Cut 1" pieces, cut piece once on single layer of fabric with piece face up on right side of fabric.

Pattern may have cutting lines for several sizes. Select the proper cutting line or pattern pieces for your size.

Before **CUTTING** place all pieces on fabric according to layout. Pin. (**Layouts show approximate position of pattern pieces; position may vary according to your pattern size.**) Cut **ACCURATELY**, cutting notches outward.

Before removing pattern, **TRANSFER MARKINGS** and lines of construction to Wrong Side of fabric, using the Pin and Chalk Pencil method or Tracing Paper and Dressmaker Wheel. Markings needed on right side of fabric should be thread traced.

NOTE: Broken-line boxes (a! b! c!) in layouts represent pieces cut by measurements provided.

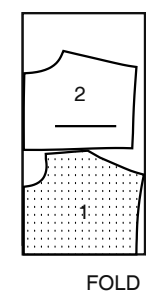
CUTTING LAYOUTS

UNDERLINING

USE PIECES 1 2

60" (150CM)
WITH NAP
ALL SIZES

SELVAGES



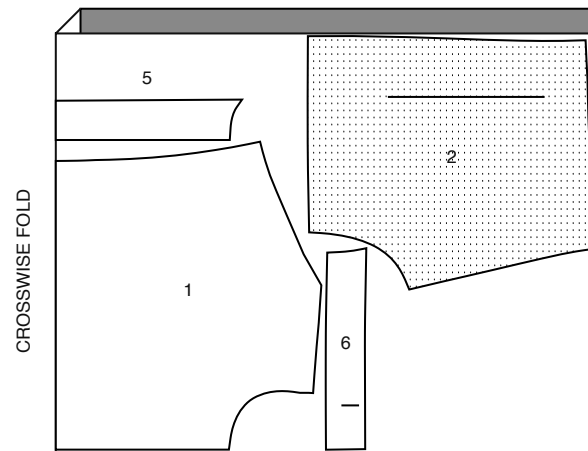
FOLD

INTERFACING

USE PIECES 1 2 5 6

20" (51CM)
ALL SIZES

SELVAGES



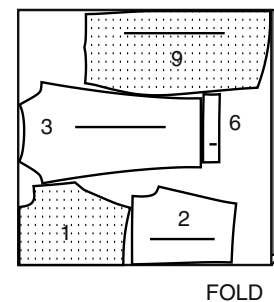
SELVAGES

DRESS A

USE PIECES 1 2 3 5 6 7 8(8A) 9 10

NOTE: BEFORE CUTTING FABRIC, JOIN PIECES IN PARENTHESIS TO CORRESPONDING PIECES FOLLOWING INSTRUCTIONS ON TISSUE PATTERN.

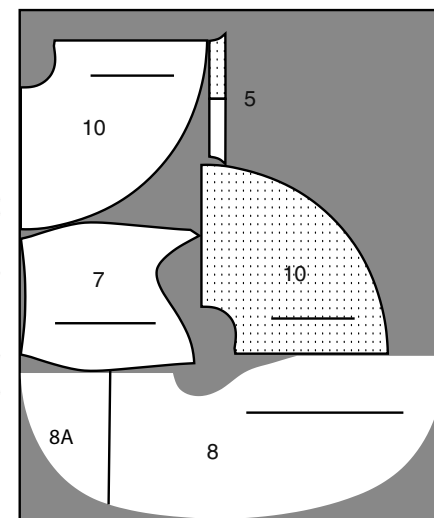
SELVAGES



FOLD

SELVAGE

SINGLE THICKNESS



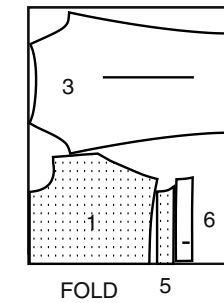
SELVAGE

60" (150CM)
WITH NAP
SIZES 4 6 8

RIGHT SIDE OF PATTERN	WRONG SIDE OF PATTERN	RIGHT SIDE OF FABRIC	WRONG SIDE OF FABRIC

60" (150CM)
WITH NAP
SIZES 10 12 14 16 18 20 22

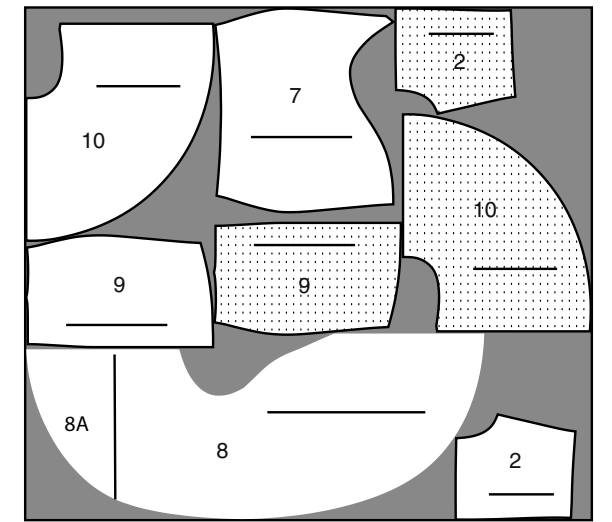
SELVAGES



FOLD

5

SELVAGE



SELVAGE

SINGLE THICKNESS

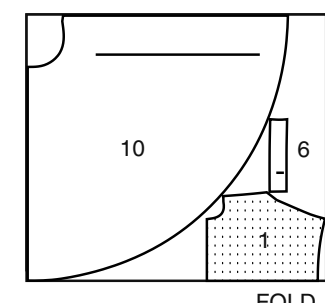
DRESS B

USE PIECES 1 2 3 5 6 7 8(8A) 9 10

NOTE: BEFORE CUTTING FABRIC, JOIN PIECES IN PARENTHESIS TO CORRESPONDING PIECES FOLLOWING INSTRUCTIONS ON TISSUE PATTERN.

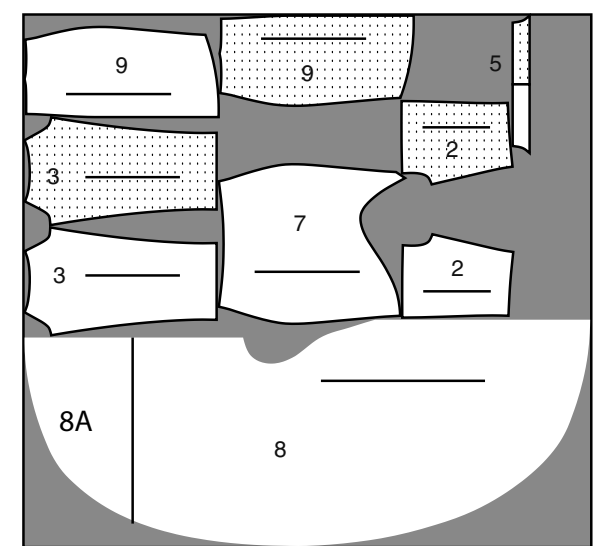
60" (150CM)
WITH NAP
SIZES 4 6 8 10

SELVAGES



FOLD

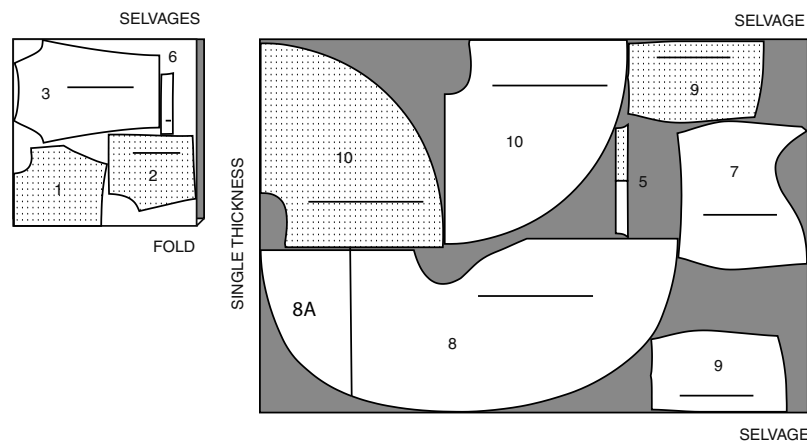
SELVAGE



SELVAGE

SINGLE THICKNESS

60" (150CM)
WITH NAP
SIZES 12 14 16 18 20 22

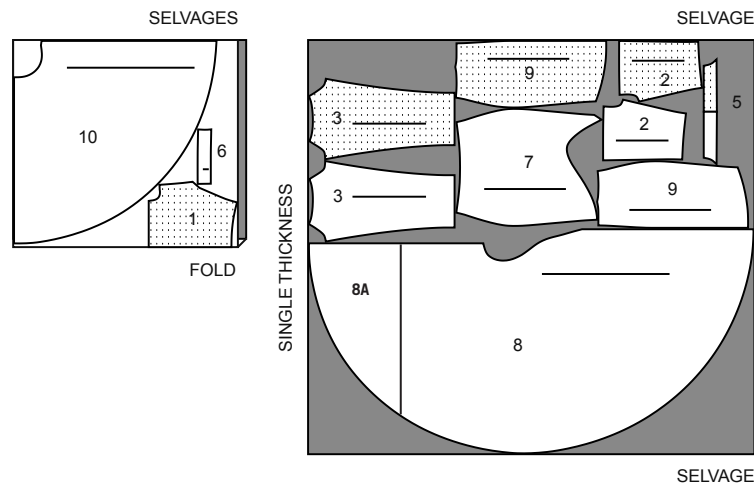


DRESS C

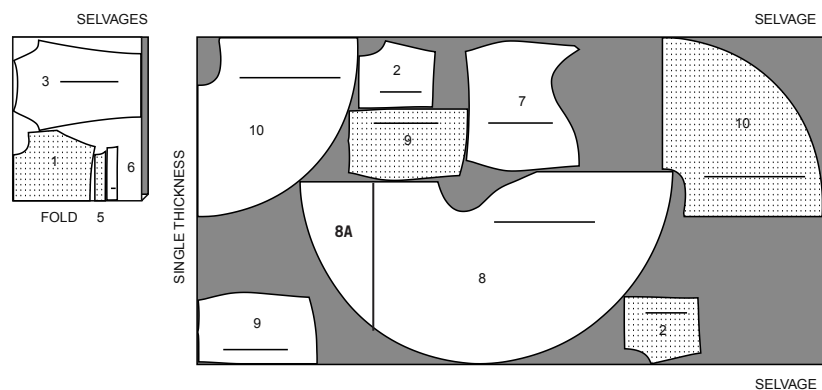
USE PIECES 1 2 3 5 6 7 8(8A) 9 10

NOTE: BEFORE CUTTING FABRIC, JOIN PIECES IN PARENTHESIS TO CORRESPONDING PIECES FOLLOWING INSTRUCTIONS ON TISSUE PATTERN.

60" (150CM)
WITH NAP
SIZES 4 6

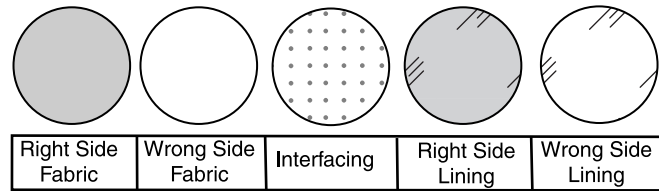


60" (150CM)
WITH NAP
SIZES 8 10 12 14 16 18 20 22



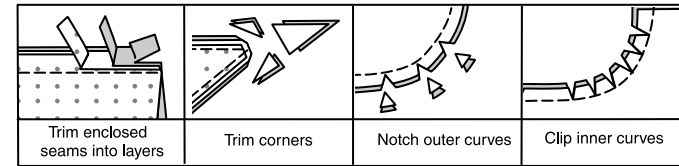
SEWING INFORMATION

FABRIC KEY



SEAM ALLOWANCES

Use 5/8" (1.5cm) seam allowances unless otherwise indicated.



PIN AND FIT

Pin or baste seams, **RIGHT SIDE TOGETHER**, matching notches. Fit garment before stitching major seams.

PRESS

Press seam allowances flat; then open unless otherwise stated. Clip where necessary so they lie flat.

GLOSSARY

Sewing methods in **BOLD TYPE** have Sewing Tutorial Video available. Scan QR CODE to watch videos:

DOUBLE STITCH – See **Machine Stitches: “how to double stitch”** video.

FINISH – See **Seams: “how to finish seam allowances”** video.

FLAT DART – See **Darts: “sewing flat dart”** video.

INVISIBLE ZIPPER – See **Zippers: “sewing an invisible zipper”** video.

NARROW HEM – See **Hems: “sewing narrow hems”** video.

SLIPSTITCH – See **Hand Stitching: “how to slip stitch”** video.

TACK – See **Hand Stitching: “how to tack”** video.

TRIM SEAM – See **Seams: “how to trim, clip and layer seams”** video.

UNDERSTITCH – See **Machine Stitches: “how to understitch”** video.

SEWING TUTORIALS



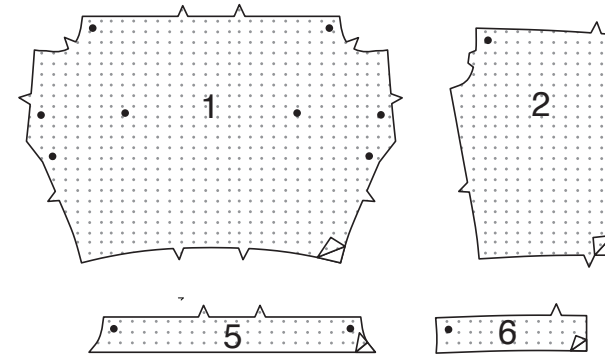
Build your skills viewing short, easy-to-follow videos at simplicity.com/sewingtutorials

DRESS A, B

NOTE: Under each sub-heading, view A will be shown unless otherwise indicated.

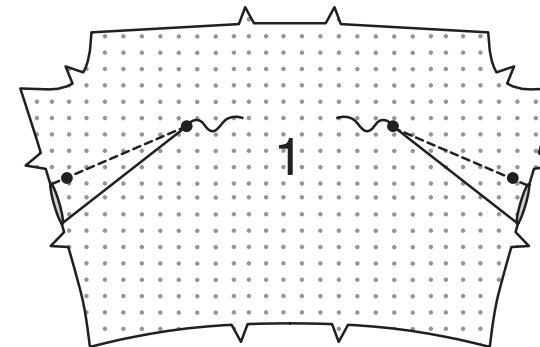
INTERFACING

1. Pin **INTERFACING** to wrong side of each matching **FABRIC** section. Fuse, following manufacturer's instructions.

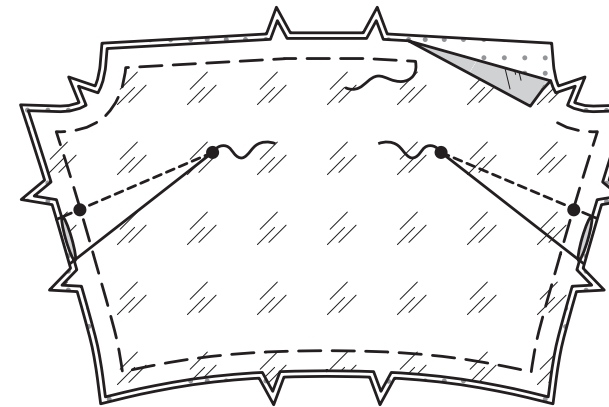


BODICE FRONT AND BACK

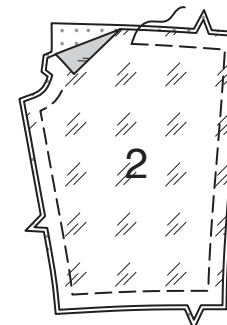
2. Make **FLAT DARTS** in **BODICE FRONT** (1). Press darts down.



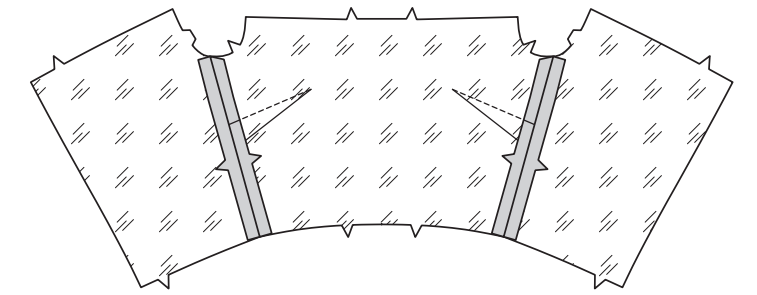
3. Make **FLAT DARTS** in bodice front underlining. Press darts down. Pin **RIGHT** side of bodice underlining to **WRONG** side of bodice front, matching centers, having raw edges even. Baste outer edges in place. (Basting shown in first illustration only).



4. Pin **RIGHT** side of **BODICE BACK** (2) underlining sections to **WRONG** side of bodice back matching centers, having raw edges even. Baste outer edges in place. (Basting shown in first illustration only).

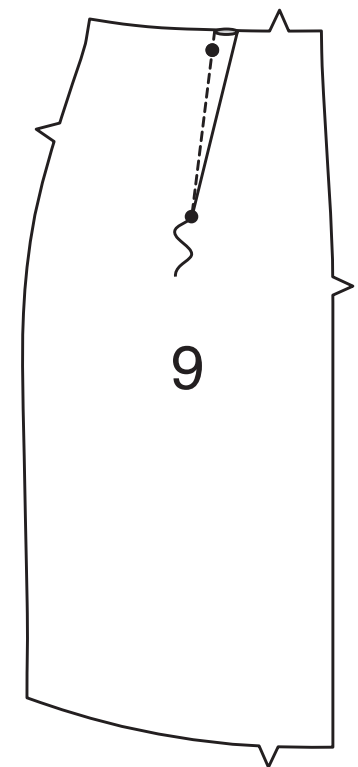


5. With **RIGHT** sides together, stitch front to back sections at sides, through all thicknesses.

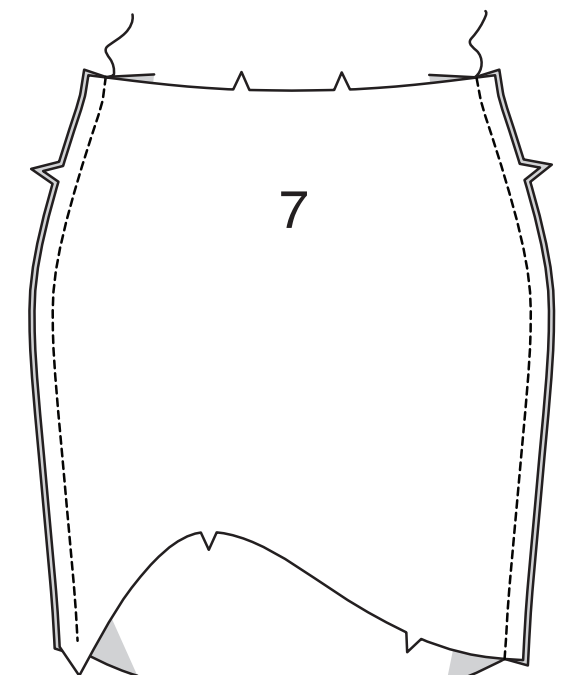


SKIRT FRONT AND BACK

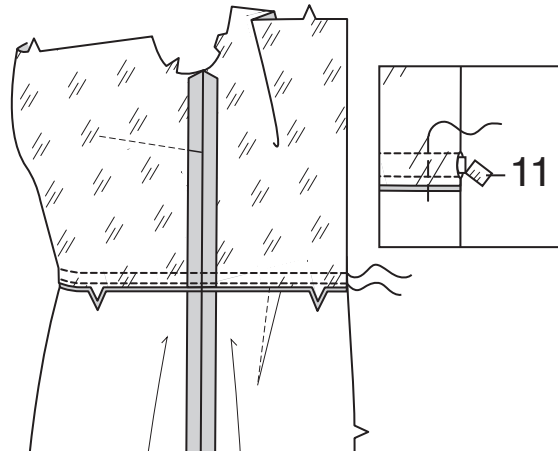
6. Make **FLAT DARTS** in **SKIRT BACK** (9). Press darts toward center back.



7. With **RIGHT** sides together, stitch **SKIRT FRONT** (7) to back sections at sides.



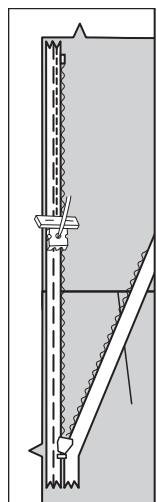
8. With RIGHT sides together, pin skirt to lower edge of bodice, matching centers and side seams. Stitch. Stitch again 1/8"(3mm) from raw edge of seam, forming casing. Cut a piece of elastic the length of GUIDE FOR ELASTIC (11). Attach safety pin to one end of elastic. Insert elastic through back opening in casing and out the other end, having seam allowances even at back edge. Stitch across ends of elastic along seam allowance. Pull out ends of elastic and trim close to stitching. Press seam down. Baste ends of casing in place.



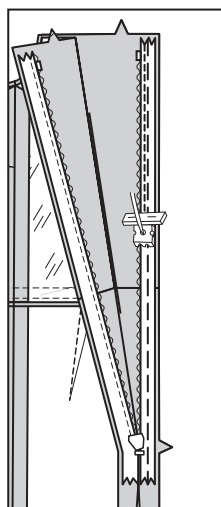
ZIPPER

NOTE: Insert zipper using an adjustable zipper foot.

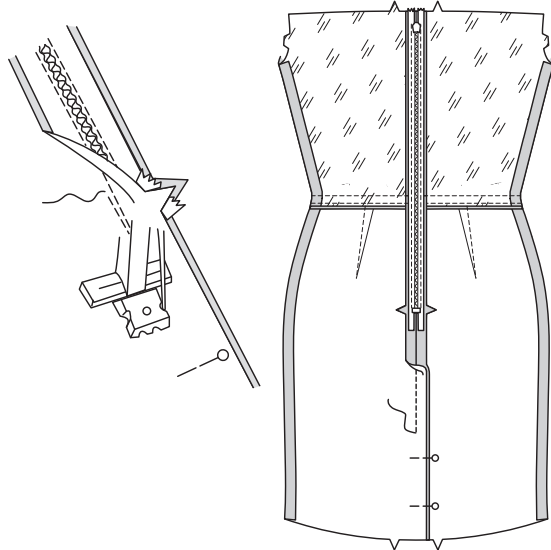
9. To insert **INVISIBLE ZIPPER**, open the zipper and press the tape using a cool iron. On **OUTSIDE**, pin RIGHT side of the zipper face down on the RIGHT side of the zipper opening. Have the coil along the seam line, the tape within the seam allowance and the top stop 3/4"(2cm) below upper edge, as shown. Hand-baste along center of the tape. Position zipper foot at the top of the zipper with RIGHT groove of the foot over coil. Stitch along tape to the notch. Back-stitch to reinforce.



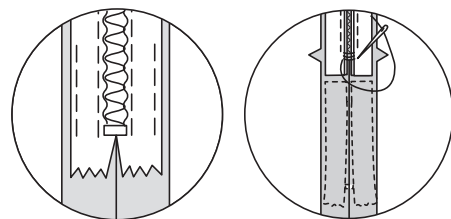
10. Pin the remaining half of the zipper to the LEFT side of the zipper opening in same manner. Make sure the upper and lower edges of the garment are even. Hand-baste along the center of the tape. Position zipper foot at the top of the zipper with LEFT groove over the coil. Stitch along tape to the notch. Back-stitch to reinforce.



11. Close zipper and check that it is invisible from the **OUTSIDE**. Pull the free ends of the zipper tape away from the seam allowance. Pin remaining center back seam together below zipper. Position zipper foot all the way to the LEFT so the needle goes down through the outer notch of the foot. Start stitching seam 1/4"(6mm) above lowest stitch and slightly to the LEFT. Stitch seam for about 3"(7.5cm). Stitch remainder of seam using your regular presser foot. If you prefer, open out each seam allowance at end of zipper and stitch tape to seam allowance.

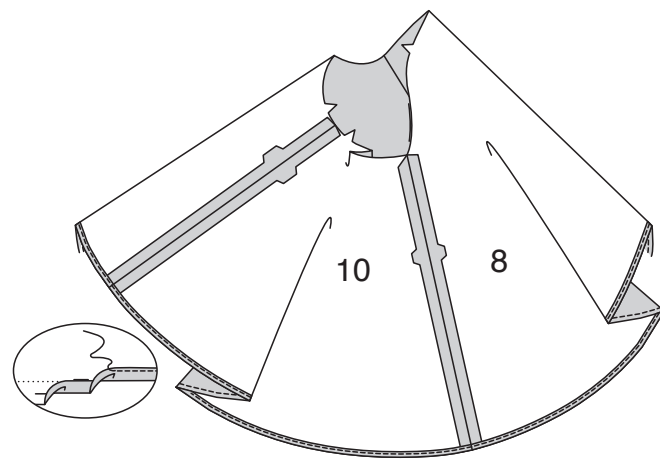


12. If the zipper is longer than the opening, using a strong thread, hand-sew a few small stitches across ends of coils at end of opening. Trim away lower end of zipper tape to within 5/8" (1.5cm) of hand-stitches. If you prefer, open out each seam allowance at end of zipper and stitch tape to seam allowance.

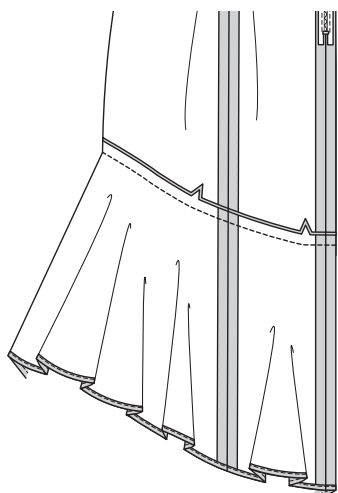


LOWER FLOUNCE

13. With RIGHT sides together, pin FLOUNCE BACK (10) sections to side edges of FLOUNCE FRONT (8) matching notches. Stitch. Stitch center back seam of flounce. **NARROW HEM** lower edge of flounce.

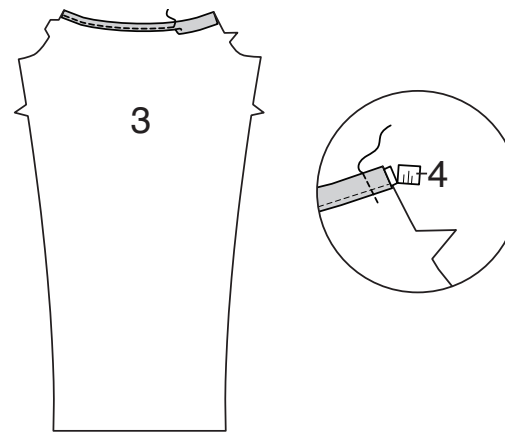


14. With RIGHT sides together, pin flounce to lower edge of skirt, matching notches and seams. Stitch. Press seam up, pressing flounce out.

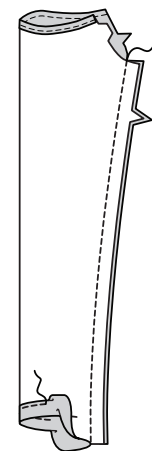


SLEEVE AND FINISHING

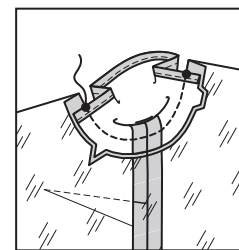
15. Cut two pieces of elastic the length of GUIDE FOR ELASTIC (4). Press under 5/8"(1.5cm) seam allowance on upper edge of sleeve to **INSIDE**. Press under 1/4"(6mm) on raw edge. Stitch close to inner pressed edge. Attach a safety pin to one end of elastic. Insert elastic into opening in casing and out the other end, having seam allowances even. Stitch across ends of elastic along seam allowance. Pull out ends of elastic and trim close to stitching.



16. With RIGHT sides together, stitch underarm seam of sleeve. Press up hem on lower edge of sleeve. Press under 1/4"(6mm) on raw edge. **EDGESTITCH** hem in place.



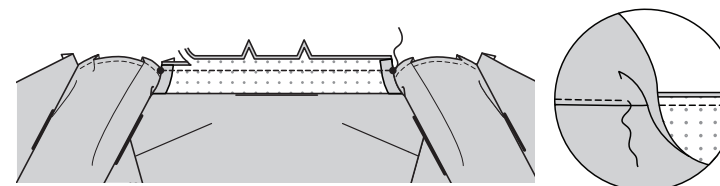
17. With RIGHT sides together, pin sleeve to armhole edge matching notches and small dots. Stitch. Press seam away from sleeve.



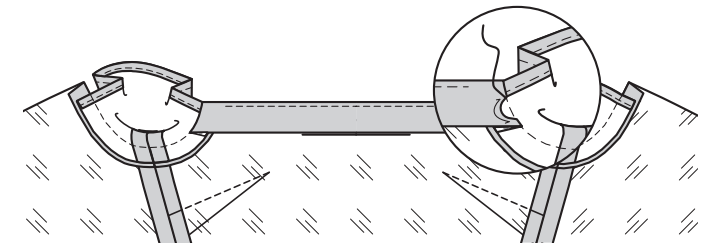
18. **FINISH** lower edge of **BODICE FRONT FACING** (5). Press under seam allowance on side edges of bodice front facing.



19. On **OUTSIDE**, pin bodice front facing to upper edge of front, matching notches and dots. Stitch. **TRIM SEAM UNDERSTITCH** facing.



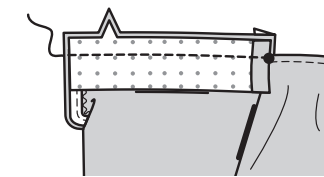
20. Turn front facing to **INSIDE**. Press. **SLIPSTITCH** pressed edges of facing to armhole edges.



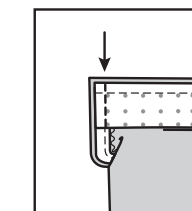
21. **FINISH** lower edge of **BODICE BACK FACING** (6). Press under seam allowance on side edges of bodice back facing sections, as shown.



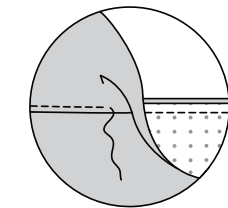
22. Open out center back opening edges of dress, rolling the zipper teeth away from the opening edge. With RIGHT sides together, pin bodice back facing to back neck edge matching centers and dots, having raw edges even. Stitch upper edges, keeping upper edge of sleeve free. **TRIM SEAM**. Do not trim back edges.



23. Pin back opening edges together. Using an adjustable zipper foot, stitch 1/2" (1.3cm) from back edges, keeping zipper teeth free. Trim corners. Do not trim center back edges.



24. **UNDERSTITCH** facing as far as possible.



25. Turn facings and back edges to **INSIDE**, rolling zipper teeth back in place; press. Pressing sleeves out. To keep the facing from rolling to **OUTSIDE**, **SLIPSTITCH** lower and side edge of facing in place.

