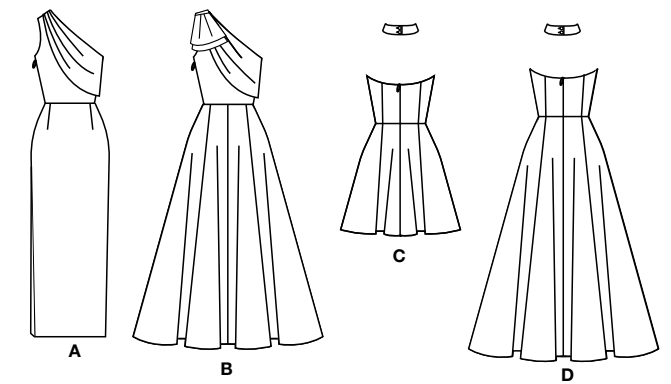
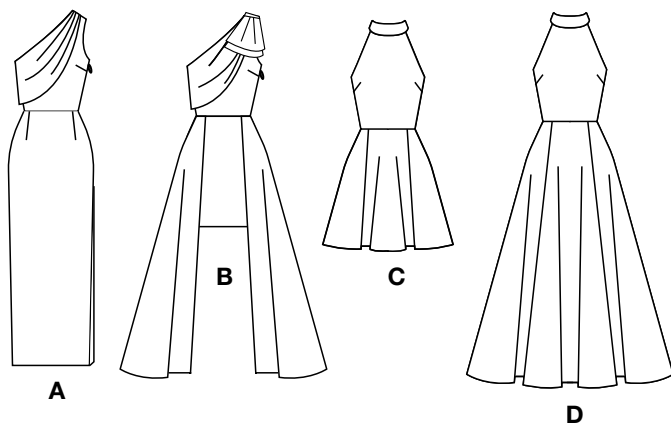
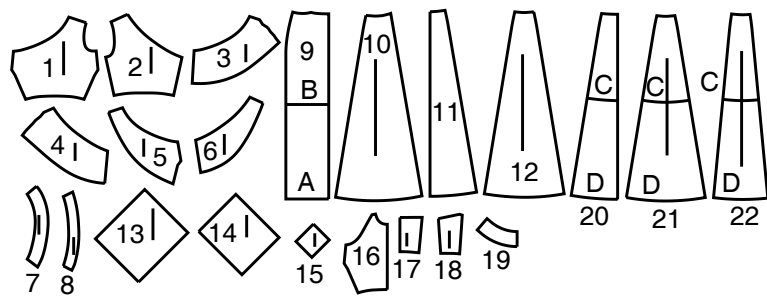


SCAN QR CODE
FOR A
STEP-BY-STEP
VIDEO TUTORIAL

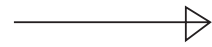


22 PATTERN PIECES

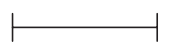


- 1 Bodice Front-A,B
- 2 Bodice Back-A,B
- 3 Drape Front-A,B
- 4 Drape Back-A,B
- 5 Drape Front Facing-A,B
- 6 Drape Back Facing-A,B
- 7 Front Facing-A,B
- 8 Back Facing-A,B
- 9 Skirt Front and Back-A,B
- 10 Overskirt Side Front-B
- 11 Overskirt Back-B
- 12 Overskirt Side Back-B
- 13 Lower Bow-B
- 14 Upper Bow-B
- 15 Knot-B
- 16 Bodice Front-C,D
- 17 Bodice Back-C,D
- 18 Bodice Side Back-C,D
- 19 Collar-C,D
- 20 Skirt Front-C,D
- 21 Skirt Back-C,D
- 22 Skirt Side Front and Side Back-C,D

PATTERN MARKINGS



Place on fold



GRAINLINE: Place on straight grain of fabric, parallel to selvage or fold.

FOLDLINE: Place line on fold of fabric.

BUTTONHOLE MARKING: Indicates exact length and placement of buttonholes.

BUTTON MARKING: Indicates button placement.

NOTCHES AND SYMBOLS: For matching seams and construction details.

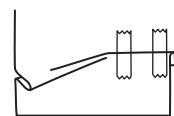
Indicates the Bustline, Waistline, Hip and/or Biceps. Measurements refer to circumference of Finished Garment (Body Measurement + Wearing Ease + Design Ease). Adjust pattern if necessary. The measurement excludes pleats, tucks, darts and seam allowances.

SEAM ALLOWANCE: 5/8" (1.5cm) included unless otherwise indicated, but not printed on tissue.

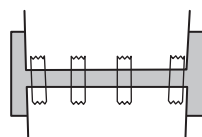
ADJUST IF NECESSARY

Lengthen or Shorten at adjustment lines (==) or where indicated on pattern. If substantial length is added, you may need to purchase additional fabric.

TO SHORTEN: Crease along adjustment line. Make a fold half the amount needed. Tape in place.



TO LENGTHEN: Slash between adjustment lines. Spread amount as needed, keeping edges parallel. Tape over paper.



When Alteration lines are not on tissue, lengthen or shorten at lower edge.

CUTTING AND MARKING

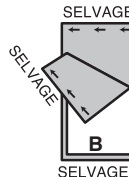
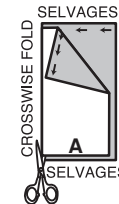
SHRINK FABRIC if not labeled pre-shrunk. Press.

CIRCLE LAYOUT for View, Size, Fabric Width.

Use **WITH NAP** layout for fabrics with one-way designs, nap, pile or surface shading. Because most knits have surface shading, a with nap layout is used.

For **DOUBLE THICKNESS (WITH FOLD)** - fold fabric with right sides together.

*** DOUBLE THICKNESS (WITHOUT FOLD)** - For fabrics with nap, fold fabric crosswise, right sides together. Mark as shown. Cut along crosswise fold of fabric (A). Turn upper layer 180° so arrows go in same direction and place over lower layer, right sides together (B).



For **SINGLE THICKNESS** - place fabric right side up. (For Fur Pile fabrics, place pile side down.)

★ Cut other pieces first, allowing enough fabric to cut this piece. Open fabric. For "Cut 1" pieces, cut piece once on single layer of fabric with piece face up on right side of fabric.

Pattern may have cutting lines for several sizes. Select the proper cutting line or pattern pieces for your size.

Before **CUTTING** place all pieces on fabric according to layout. Pin. (**Layouts show approximate position of pattern pieces; position may vary according to your pattern size.**) Cut **ACCURATELY**, cutting notches outward.

Before removing pattern, **TRANSFER MARKINGS** and lines of construction to Wrong Side of fabric, using the Pin and Chalk Pencil method or Tracing Paper and Dressmaker Wheel. Markings needed on right side of fabric should be thread traced.

NOTE: Broken-line boxes (a! b! c!) in layouts represent pieces cut by measurements provided.

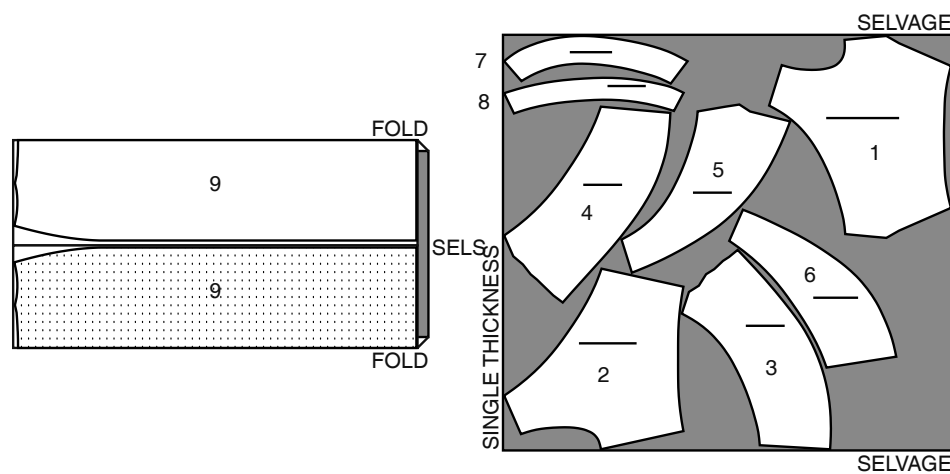
CUTTING LAYOUTS

MISS

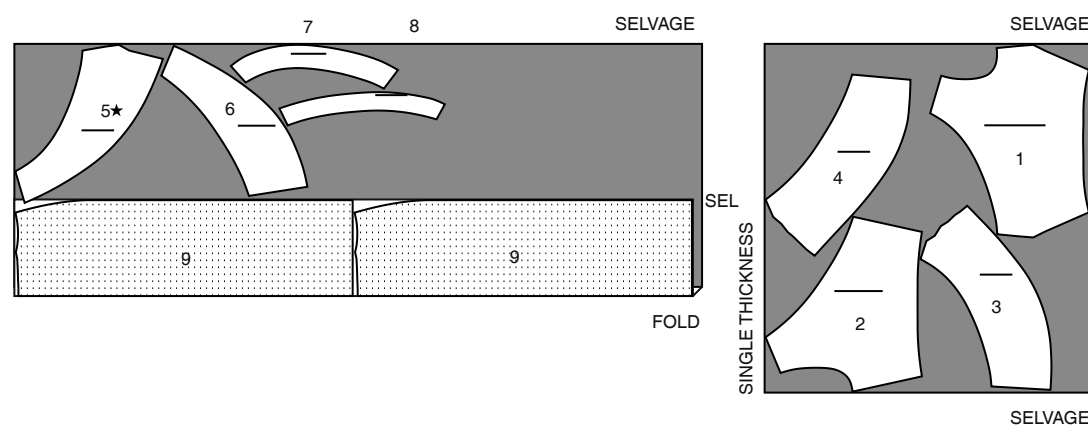
DRESS A

USE PIECES 1 2 3 4 5 6 7 8 9

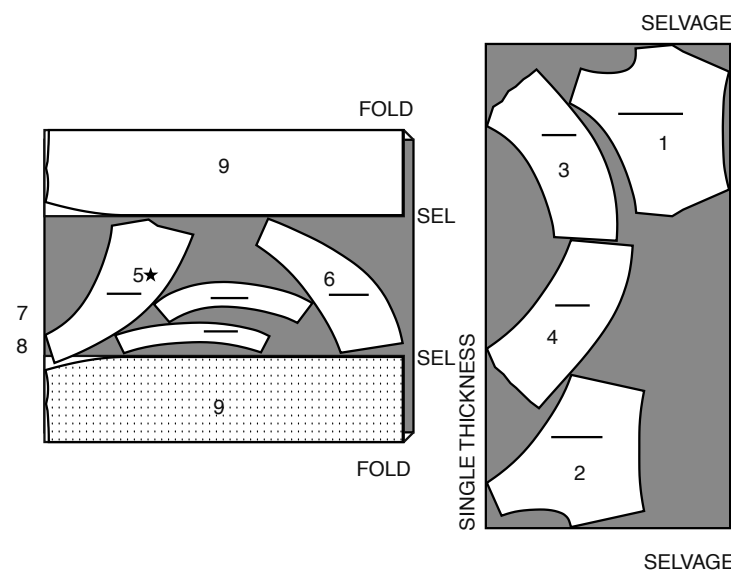
45" (115CM)
WITH NAP
SIZES 4 6 8 10 12 14



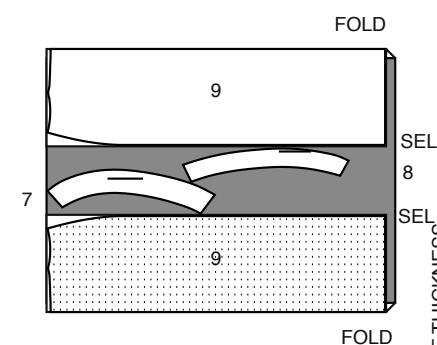
45" (115CM)
WITH NAP
SIZES 16 18 20



60" (150CM)
WITH NAP
SIZES 4 6 8 10 12



60" (150CM)
WITH NAP
SIZES 14 16 18 20

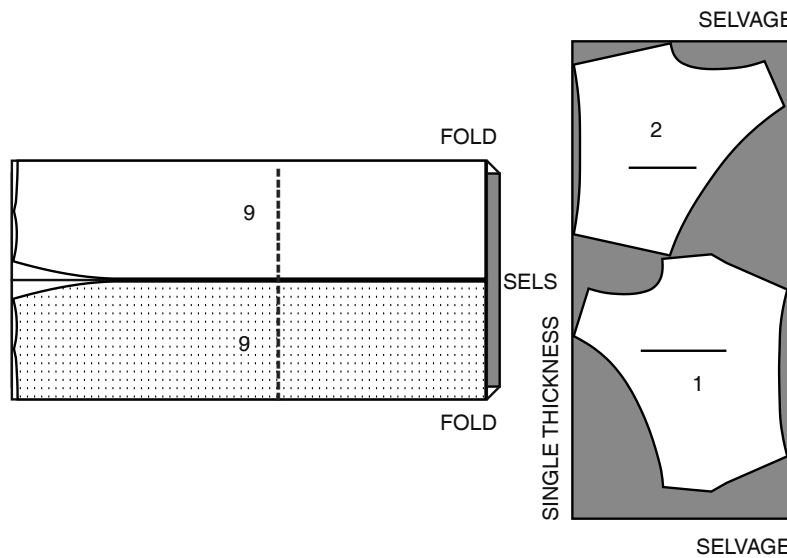


LINING A,B

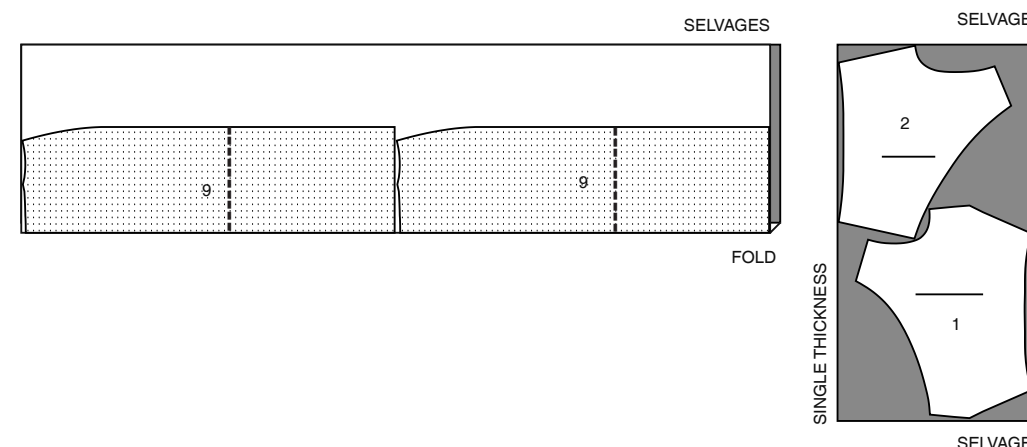
USE PIECES 1 2 9

NOTE: DASHED LINE SHOWN ON PATTERN PIECES IN CUTTING LAYOUTS INDICATES CUTTING LINE FOR SHORTER LENGTH.

45" (115CM)
WITHOUT NAP
SIZES 4 6 8 10 12 14

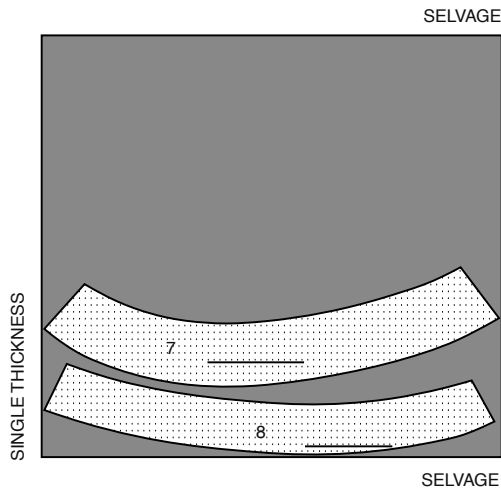


45" (115CM)
WITH NAP
SIZES 16 18 20



INTERFACING A,B
USE PIECES 7 8

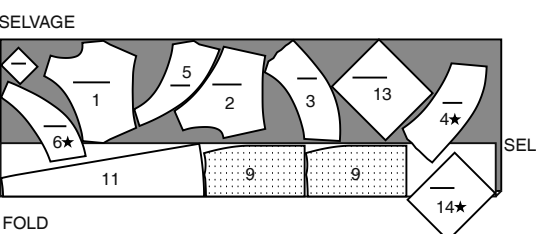
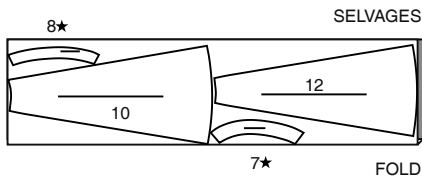
20" (51CM)
ALL SIZES



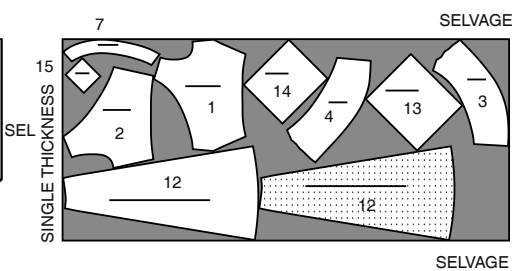
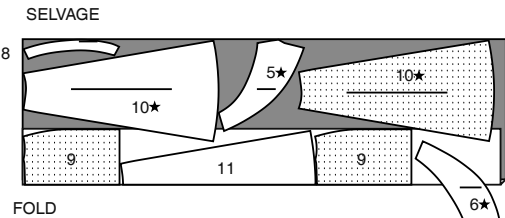
DRESS B

USE PIECES 1 2 3 4 5 6 7 8 9 10 11 12 13 14 15

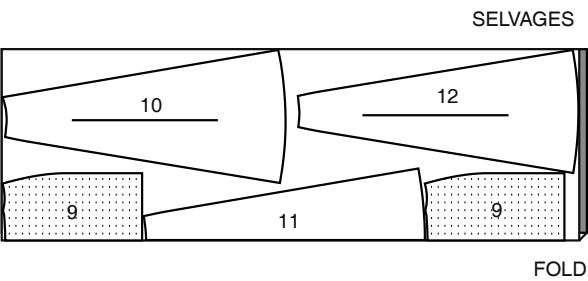
45" (115CM)
WITH NAP
SIZES 4 6 8 10 12 14



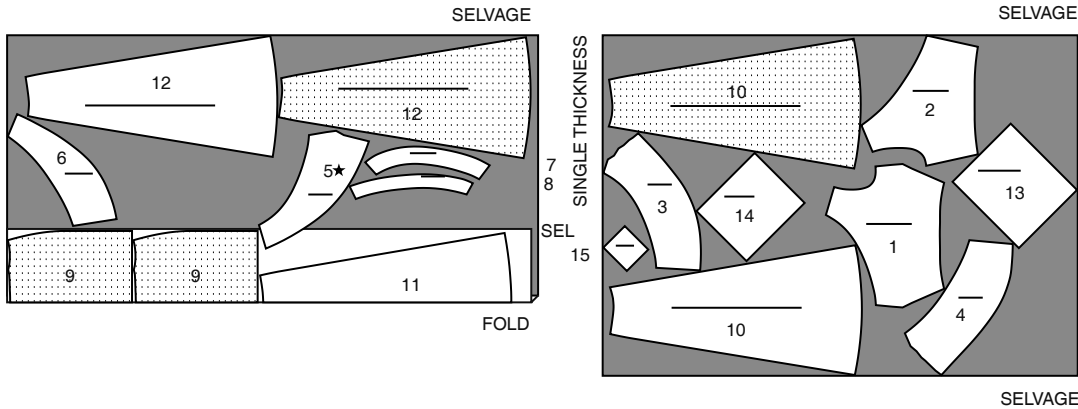
45" (115CM)
WITH NAP
SIZES 16 18 20



60" (150CM)
WITH NAP
SIZES 4 6 8 10 12



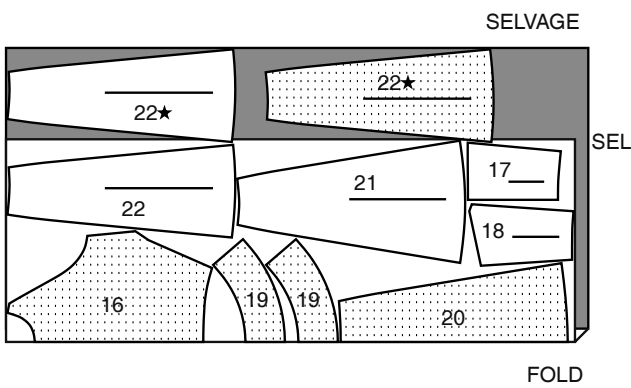
60" (150CM)
WITH NAP
SIZES 14 16 18 20



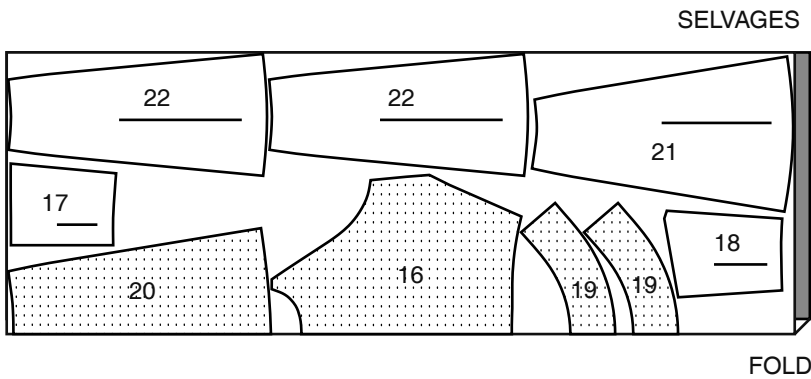
DRESS C

USE PIECES 16 17 18 19 20 21 22

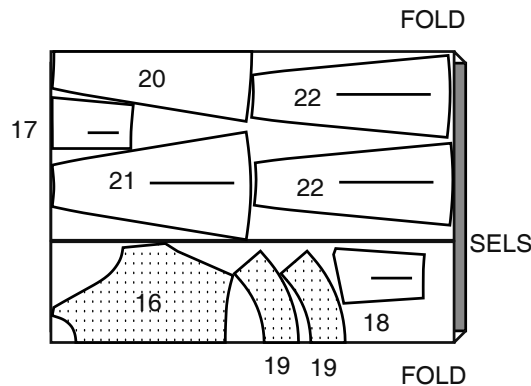
45" (115CM)
WITH NAP
SIZES 4 6 8



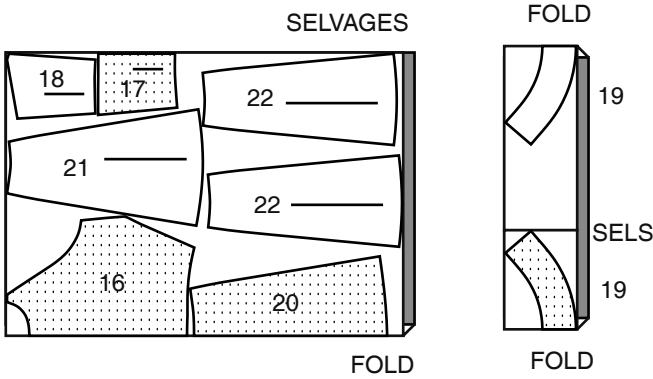
45" (115CM)
WITH NAP
SIZES 10 12 14 16 18 20



60" (150CM)
WITH NAP
SIZES 4 6 8 10



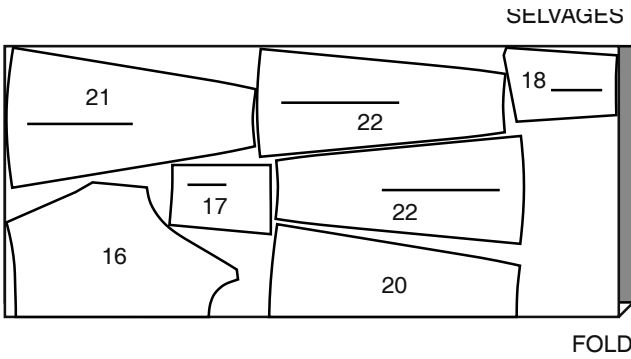
60" (150CM)
WITH NAP
SIZES 12 14 16 18 20



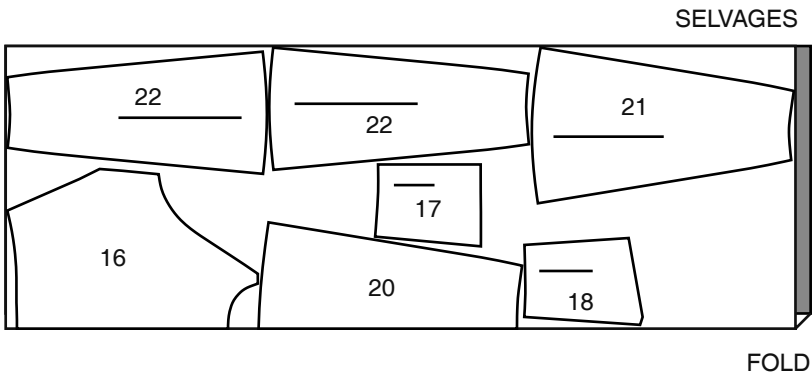
LINING C

USE PIECES 16 17 18 20 21 22

45" (115CM)
WITHOUT NAP
SIZES 4 6 8 10 12 14



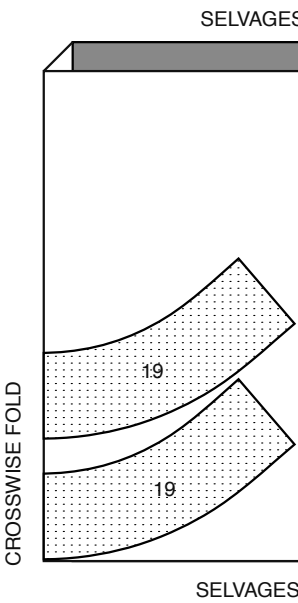
45" (115CM)
WITH NAP
SIZES 16 18 20



INTERFACING C,D

USE PIECE 19

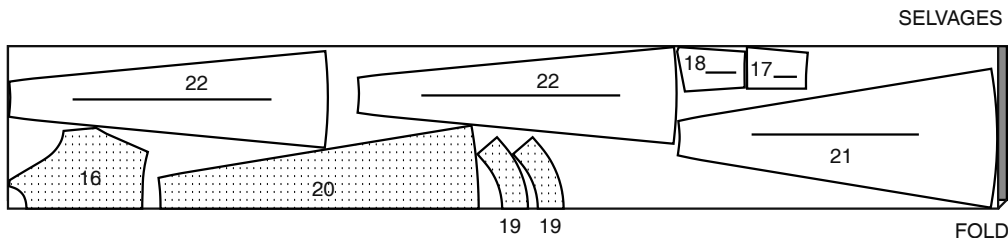
20" (51CM)
ALL SIZES



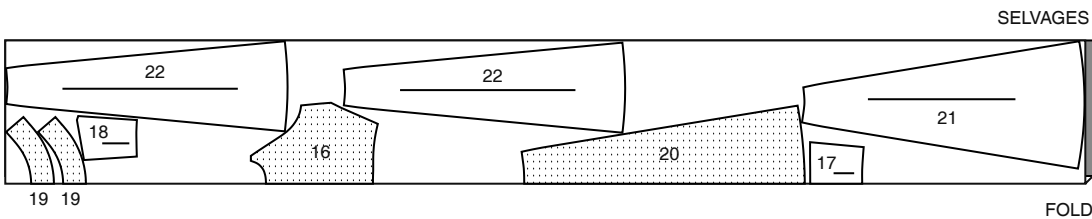
DRESS D

USE PIECES 16 17 18 19 20 21 22

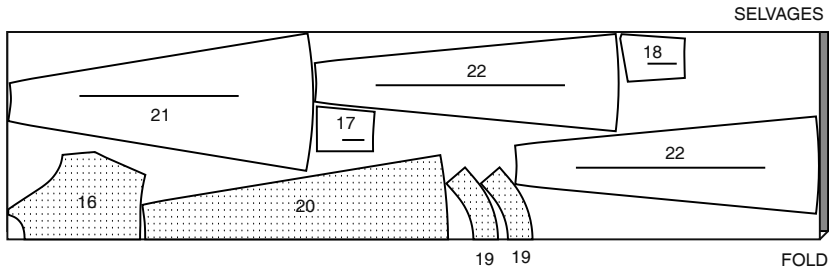
45" (115CM)
WITH NAP
SIZES 4 6 8 10 12 14



45" (115CM)
WITH NAP
SIZES 16 18 20

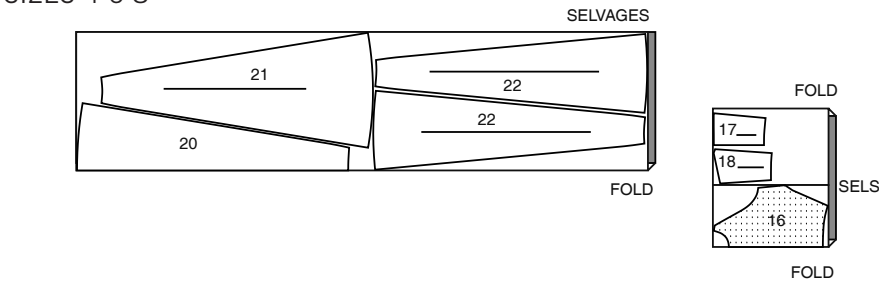


60" (150CM)
WITH NAP
ALL SIZES

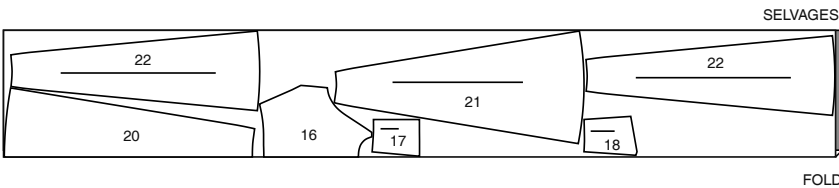


LINING D
USE PIECES 16 17 18 20 21 22

45" (115CM)
WITHOUT NAP
SIZES 4 6 8



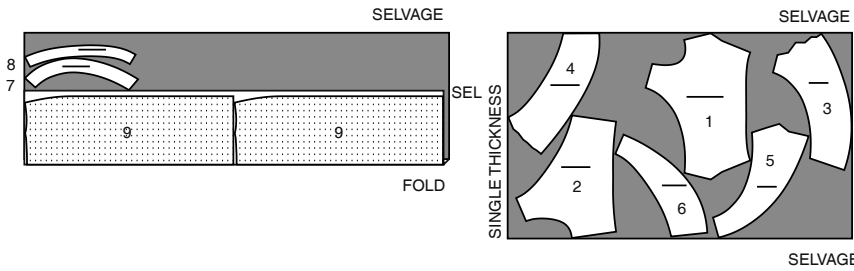
45" (115CM)
WITHOUT NAP
SIZES 10 12 14 16 18 20



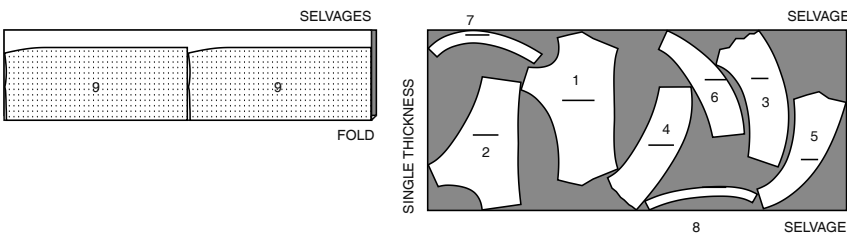
WOMEN

DRESS A
USE PIECES 1 2 3 4 5 6 7 8 9

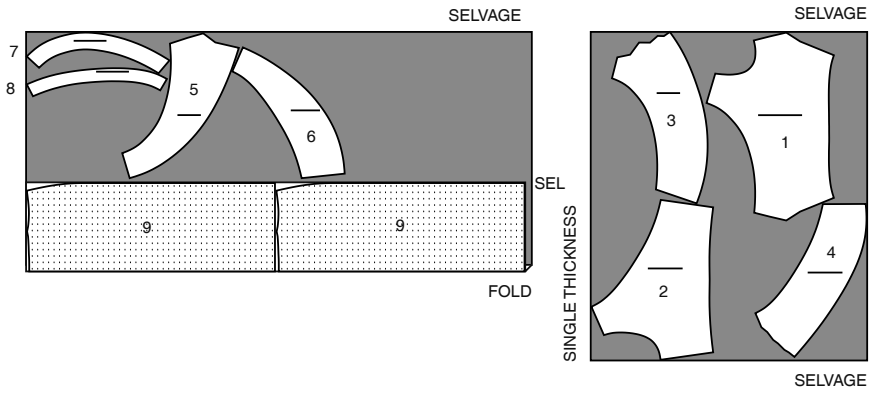
45" (115CM)
WITH NAP
SIZES 20W 22W 24W 26W 28W



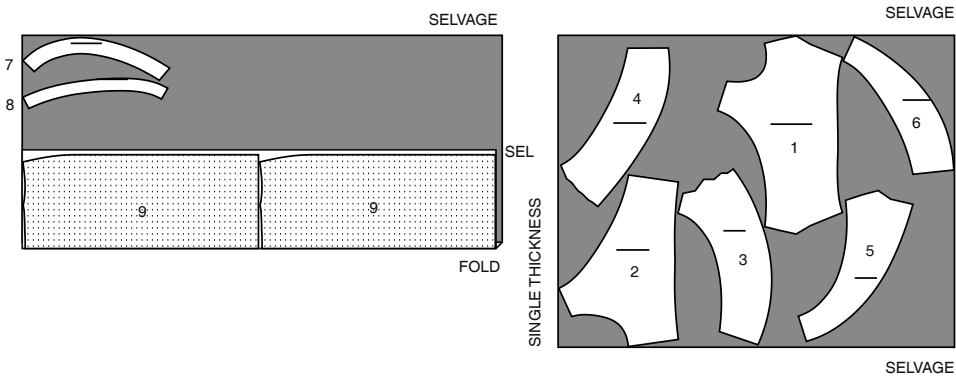
45" (115CM)
WITH NAP
SIZES 30W 32W 34W 36W 38W



60" (150CM)
WITH NAP
SIZES 20W 22W 24W 26W 28W 30W 32W

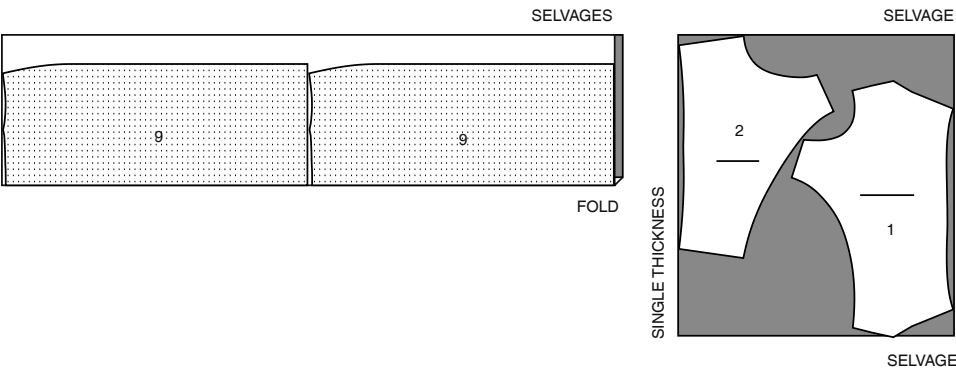


60" (150CM)
WITH NAP
SIZES 34W 36W 38W



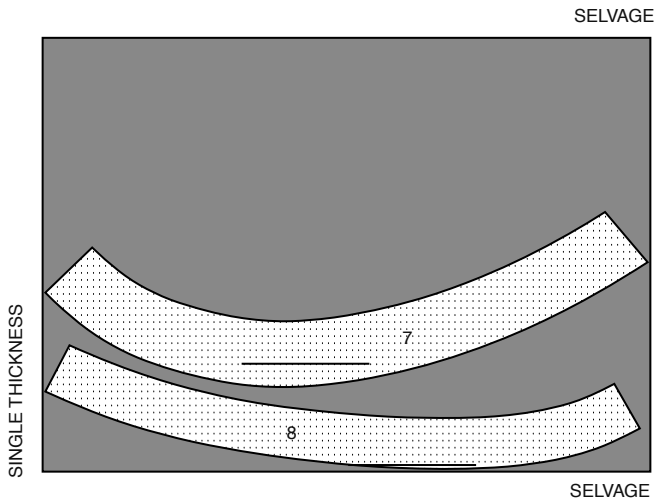
LINING A
USE PIECES 1 2 9

45" (115CM)
WITHOUT NAP
ALL SIZES



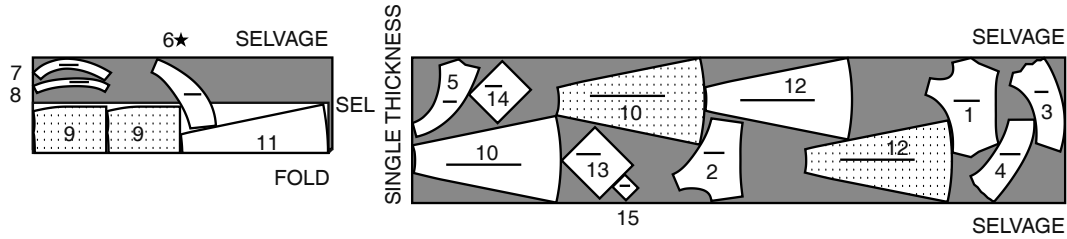
INTERFACING A,B
USE PIECES 7 8

20" (51CM)
ALL SIZES

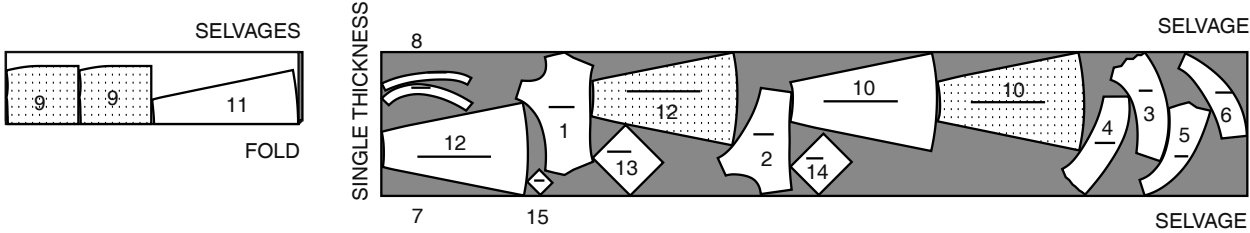


DRESS B
USE PIECES 2 3 4 5 6 7 8 9 10 11 12 13 14 15

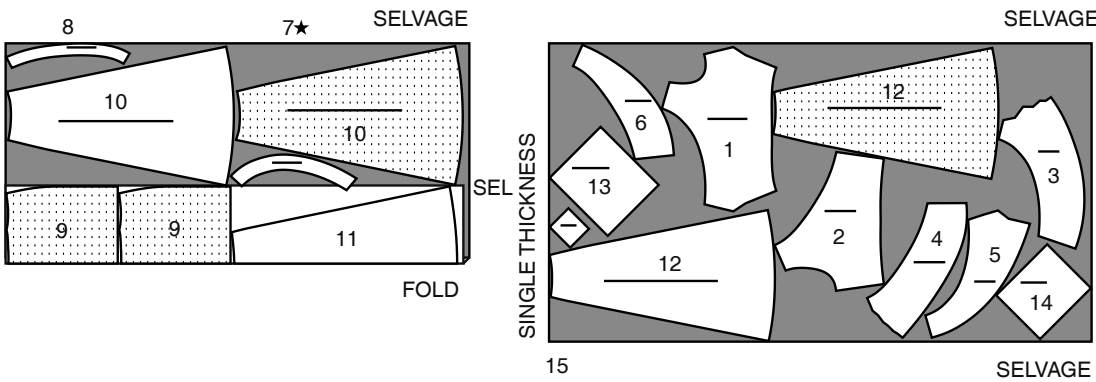
45" (115CM)
WITH NAP
SIZES 20W 22W 24W 26W



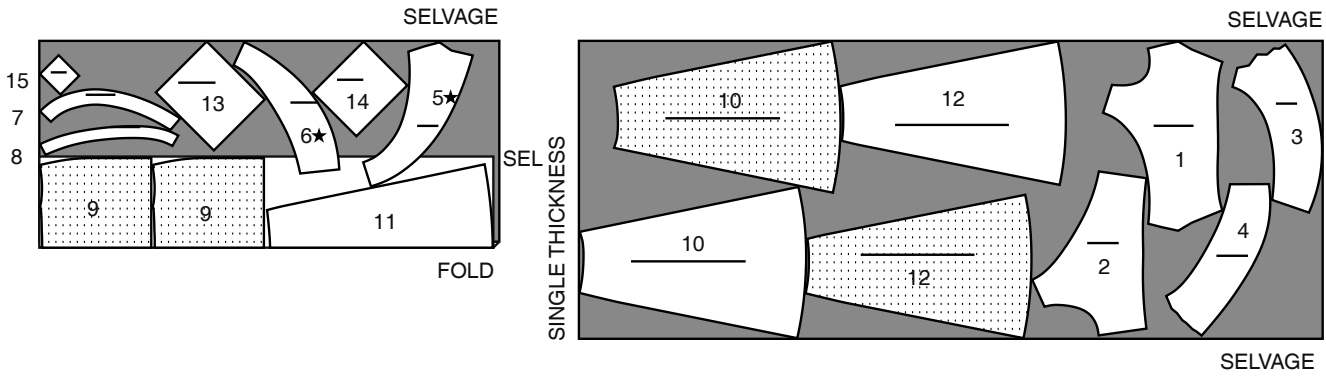
45" (115CM)
WITH NAP
SIZES 28W 30W 32W 34W 36W 38W



60" (150CM)
WITH NAP
SIZES 20W 22W 24W 26W 28W 30W

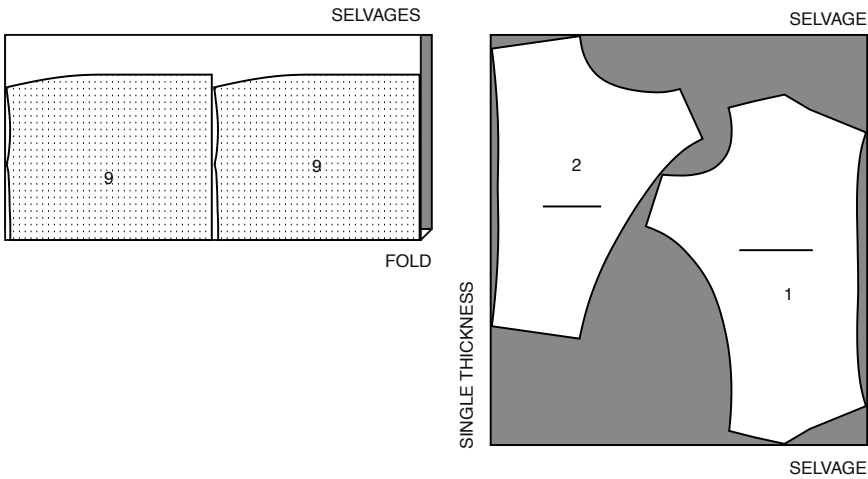


60" (150CM)
WITH NAP
SIZES 32W 34W 36W 38W



LINING B
USE PIECES 1 2 9

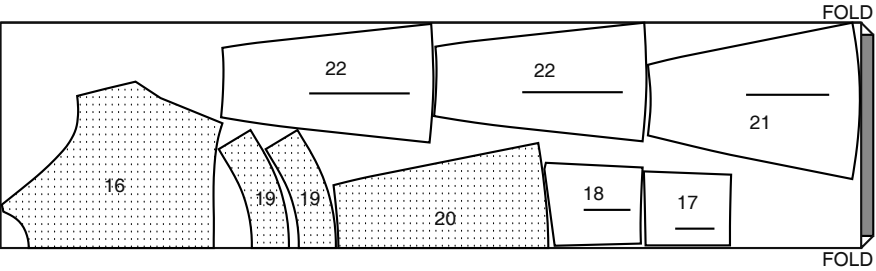
45" (115CM)
WITH NAP
ALL SIZES



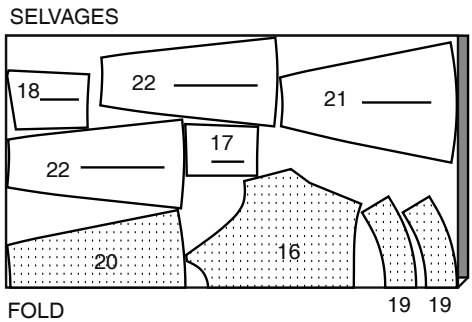
DRESS C

USE PIECES 16 17 18 19 20 21 22

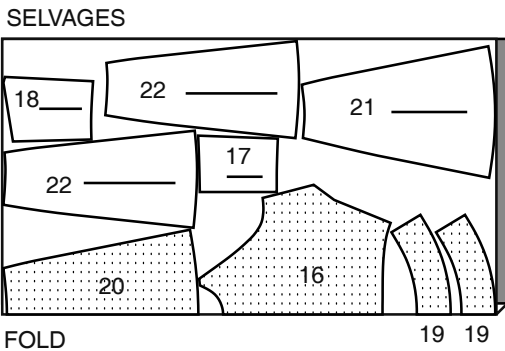
45" (115CM)
WITH NAP
SIZES 20W 22W 24W 26W 28W 30W



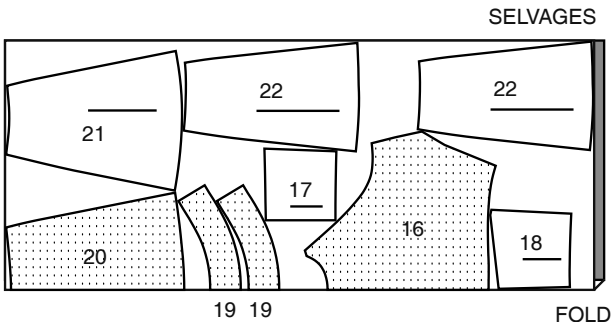
45" (115CM)
WITH NAP
SIZES 32W 34W 36W 38W



60" (150CM)
WITH NAP
SIZES 20W 22W



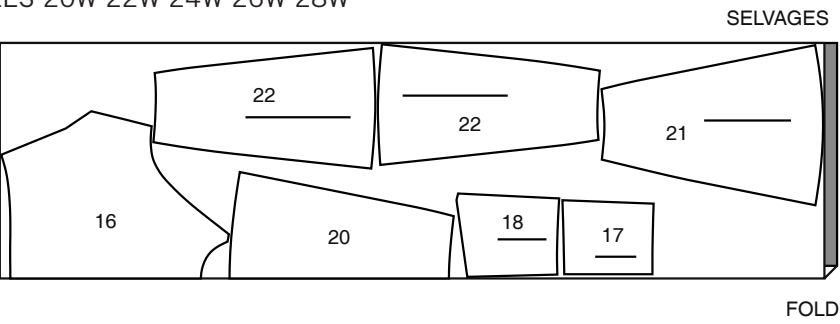
60" (150CM)
WITH NAP
SIZES 24W 26W 28W 30W 32W 34W 36W 38W



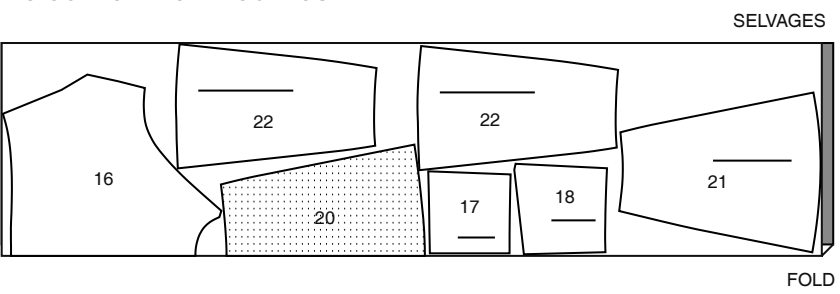
LINING C

USE PIECES 16 17 18 20 21 22

45" (115CM)
WITH NAP
SIZES 20W 22W 24W 26W 28W



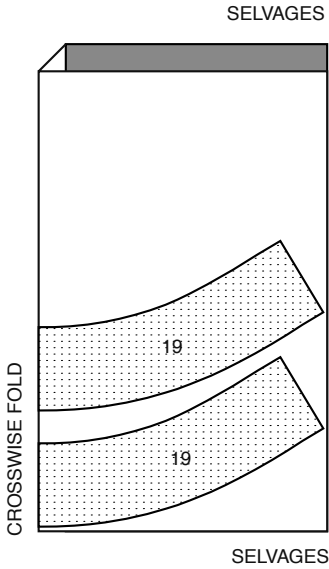
45" (115CM)
WITH NAP
SIZES 30W 32W 34W 36W 38W



INTERFACING C,D

USE PIECES 19

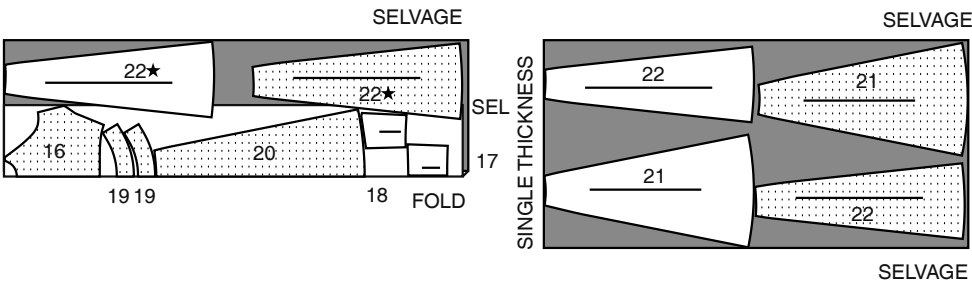
20" (51CM)
ALL SIZES



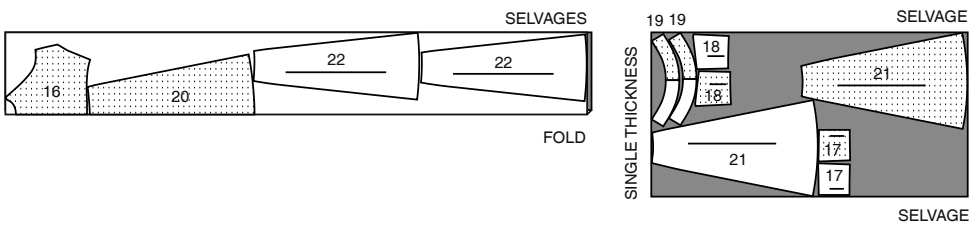
DRESS D

USE PIECES 16 17 18 19 20 21 22

45" (115CM)
WITH NAP
SIZES 20W 22W 24W 26W



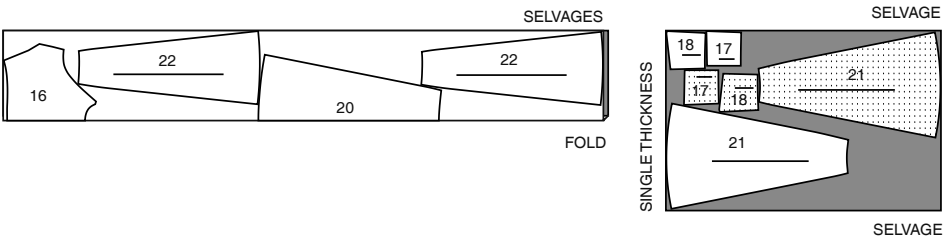
45" (115CM)
WITH NAP
SIZES 28W 30W 32W 34W 36W 38W



LINING D

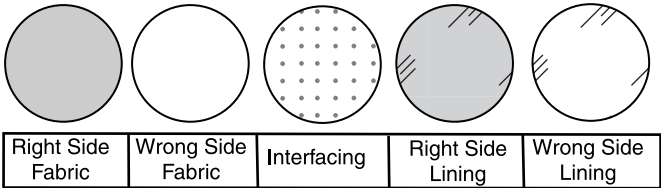
USE PIECES 16 17 18 20 21 22

45" (115CM)
WITHOUT NAP
ALL SIZES



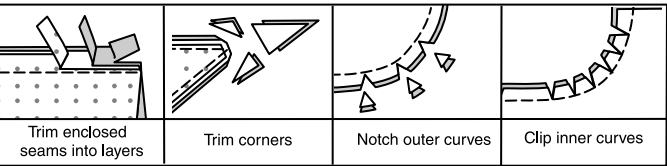
SEWING INFORMATION

FABRIC KEY



SEAM ALLOWANCES

Use 5/8" (1.5cm) seam allowances unless otherwise indicated.



PIN AND FIT

Pin or baste seams, RIGHT SIDE TOGETHER, matching notches.
Fit garment before stitching major seams.

PRESS

Press seam allowances flat; then open unless otherwise stated.
Clip where necessary so they lie flat.

GLOSSARY

GLOSSARY OF SEWING METHODS

Sewing methods shown in *ITALICS* are defined below:

DART – To make dart, with RIGHT sides together, fold the fabric through the center of the dart, bringing broken lines and small dots together. On INSIDE, place pins at RIGHT angles to the broken lines. Stitch the dart from wide end to point.

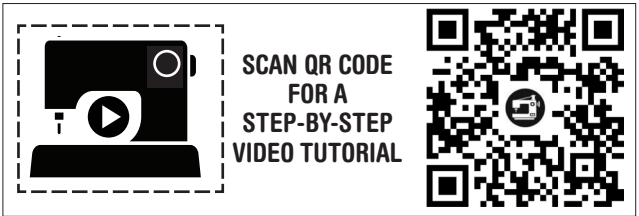
Press the dart flat along the stitching to “blend” the stitches, then press dart as indicated in the Sewing Directions.

TIP - To prevent a “bubble” at the point, make the last few stitches right on the fold and leave the thread ends long enough to tie a knot. DO NOT back-stitch at the point.

EDGE FINISH – Stitch 1/4” (6mm) from edge, turn under edge along stitching and stitch OR zigzag stitch, OR overlock raw edges.

STAYSTITCH – Stitch 1/2” (1.3cm) from cut edge in direction of arrows. This stitching stays in permanently to prevent stretching on curved edges. (Shown only in the first illustration.)

UNDERSTITCH – Press facing and seam away from garment, stitching through facing and seam allowances close to seam.



PATTERN PIECES WILL BE IDENTIFIED BY NUMBERS THE FIRST TIME THEY ARE USED.

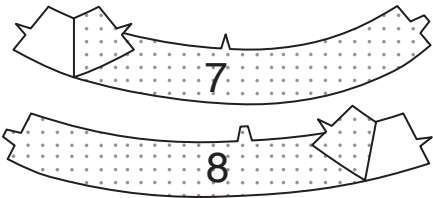
STITCH 5/8” (1.5CM) SEAMS WITH RIGHT SIDES TOGETHER UNLESS OTHERWISE STATED.

DRESS A, B

NOTE: Trim 1” (2.5cm) from lower edge of SKIRT FRONT AND BACK (9) LINING sections before stitching seams.

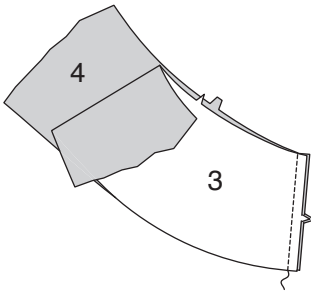
INTERFACING

1. Pin interfacing to WRONG side of FRONT FACING (7) and BACK FACING (8). Fuse interfacing in place following manufacturer’s directions.

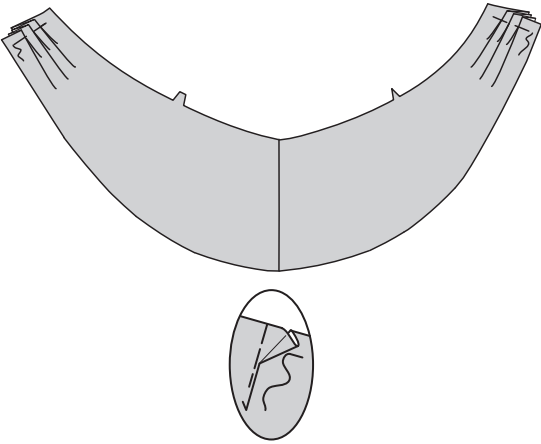


BODICE

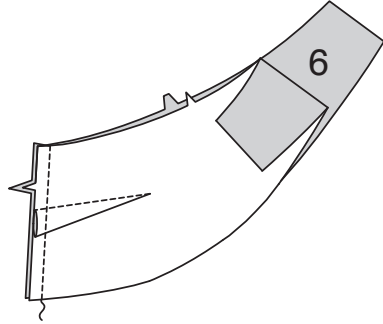
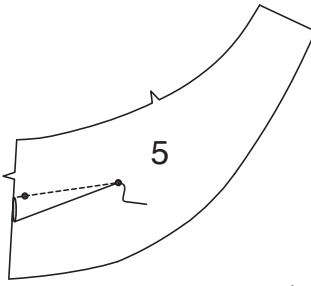
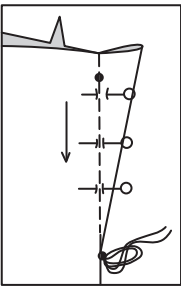
2. With RIGHT sides together and raw edges even, pin DRAPE FRONT (3) to DRAPE BACK (4) along RIGHT side edge. Stitch.



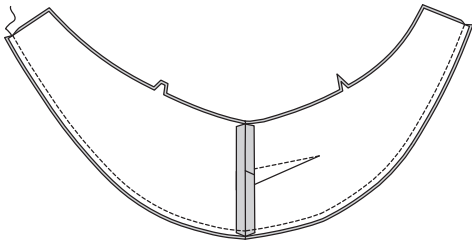
3. To make pleats in drape, on OUTSIDE, fold along solid lines. Bring folds to broken lines; pin. Baste across raw edge.



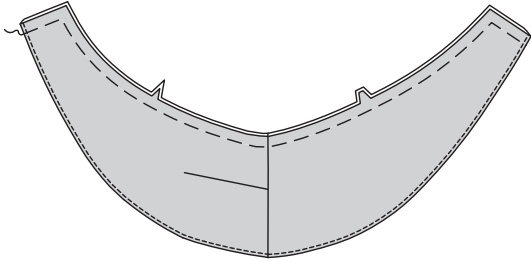
4. Make **DART** in DRAPE FRONT FACING (5). With RIGHT sides together and raw edges even, pin drape front facing to DRAPE BACK FACING (6) along RIGHT side edge. Stitch.



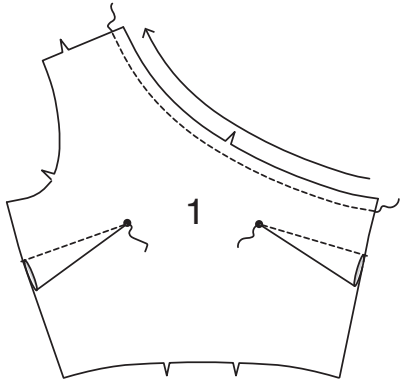
5. With RIGHT sides together and raw edges even, pin drape to drape facing along unnotched edge. Stitch in a 3/8" (1cm) seam.



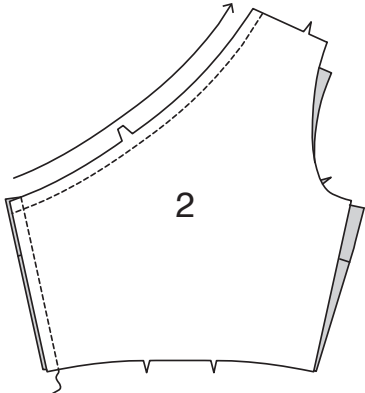
6. **UNDERSTITCH** the facing. Turn facing to INSIDE; press. Baste raw edges together.



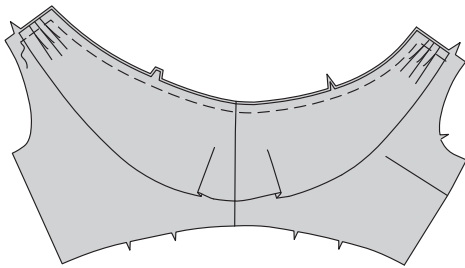
7. **STAYSTITCH** neck edge of BODICE FRONT (1) in the direction of the arrows. Make **DART**(s) and press down.



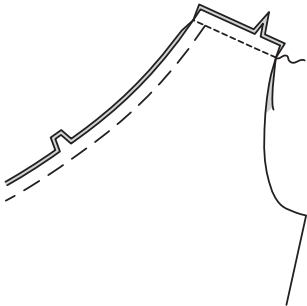
8. **STAYSTITCH** neck edge of BODICE BACK (2) in the direction of the arrows. Stitch front to back at RIGHT side edges.



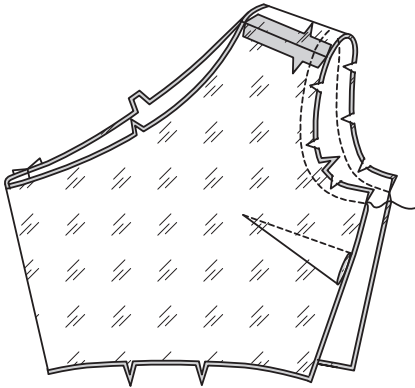
9. On OUTSIDE, pin the WRONG (facing) side of the drape to the RIGHT side of the bodice along neck edge, matching seams and notches. Baste along neck and shoulder edges.



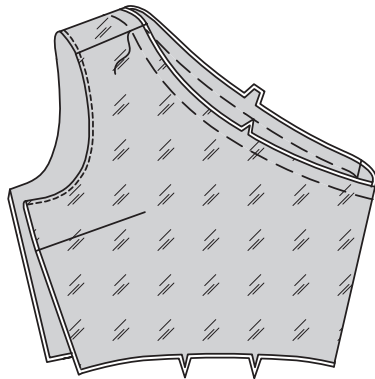
10. With RIGHT sides together and raw edges even, stitch bodice front to bodice back at shoulder edges, through all thicknesses.



11. Make darts and stitch bodice lining sections together in the same manner as bodice. With RIGHT sides together and raw edges even, pin lining to bodice, matching centers, seams, and notches. Stitch armhole edge. Trim seam; clip curves.



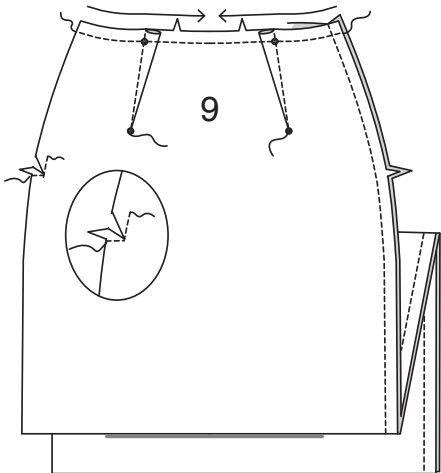
12. **UNDERSTITCH** lining along armhole edge. Turn lining to INSIDE; press. Baste neck edges together.



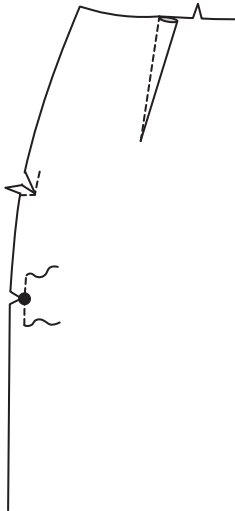
SKIRT

13. **STAYSTITCH** upper edge of SKIRT FRONT AND BACK (9) sections in the direction of the arrows. Make **DART**(s) and press toward center.

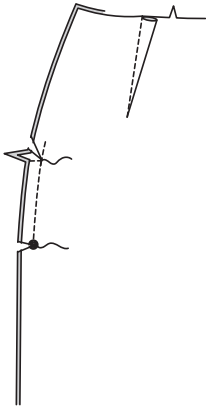
Stitch skirt front to skirt back at RIGHT side edges. To reinforce skirt front and back sections at LEFT side edges, stitch along seamline for about 1" (2.5cm) over the notch, pivoting and stitching through the notch, as shown. Clip seam allowance to stitching at notch.



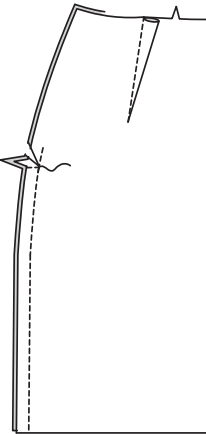
14. **FOR VIEW A** – In addition, reinforce skirt front and back sections at LEFT side edges, stitch along seamline for about 1" (2.5cm) over the large dot, stitching through the dot as shown, as shown. Clip seam allowance to stitching at large dot.



15. Stitch LEFT side edges together between the notch and large dot, backstitching to reinforce the seam.

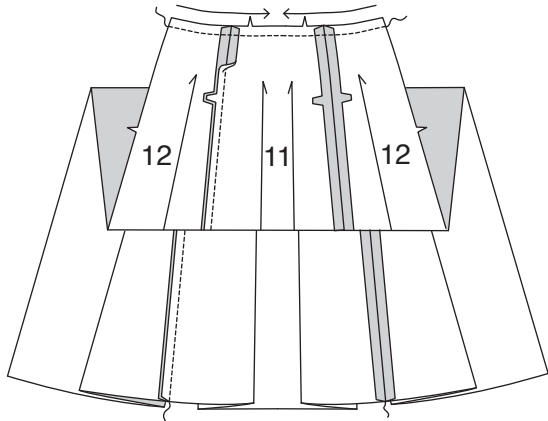


16. **FOR VIEW B** – Stitch LEFT side edges together from lower edge to the notch.

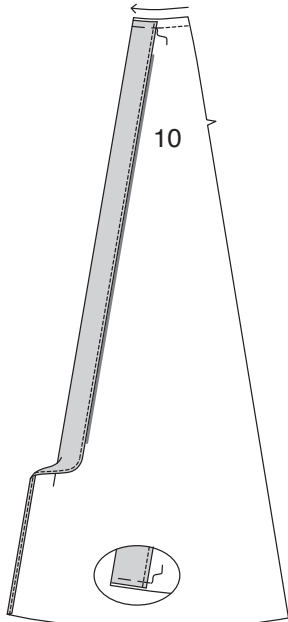


OVERSKIRT B

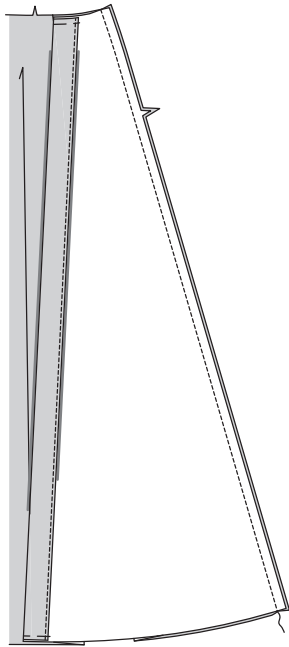
17. With RIGHT sides together and raw edges even, pin OVERSKIRT SIDE BACK (12) sections to OVERSKIRT BACK (11) at side back edges, matching notches. Stitch. **STAYSTITCH** upper edge in the direction of the arrows.



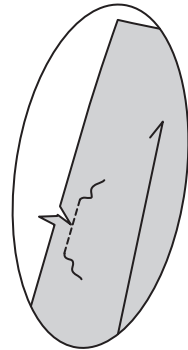
18. **STAYSTITCH** upper edge of OVERSKIRT SIDE FRONT (10) sections in the direction of the arrows. **EDGE FINISH** front edge of overskirt side front. Turn front edge to INSIDE along foldline forming facing; press. Baste along upper seamline and 1/4" (6mm) from lower edge of facing.



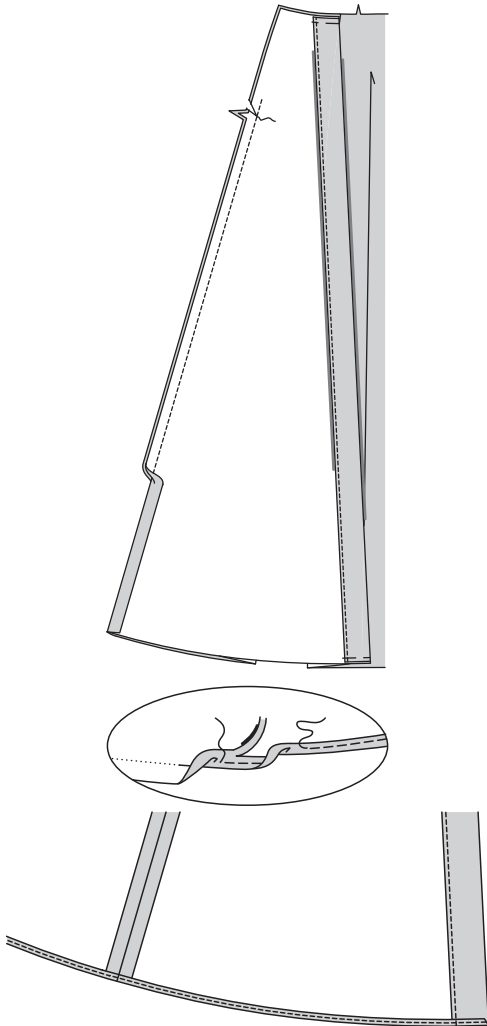
19. With RIGHT sides together and raw edges even, pin RIGHT overskirt side front section to overskirt side back along RIGHT side edge, matching notches. Stitch.



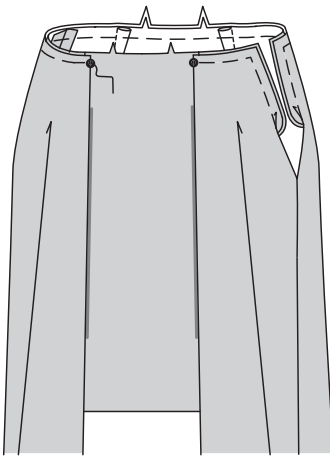
20. To reinforce LEFT overskirt side back section at left side edge, stitch along seam line for about 1" (2.5cm) over the notch, as shown. Clip seam allowance to stitching at notch. Reinforce and clip LEFT overskirt side front section at LEFT side edge in the same manner.



21. Stitch LEFT side seam of overlay from lower edge to clip (notch), back-stitching at notch to reinforce the seam. Press seam open below notch. To make a narrow hem, press under 1/4" (6mm) on lower edge. Stitch close to pressed edge. Trim close to stitching. Press under another 1/8" (3mm) and stitch in place.

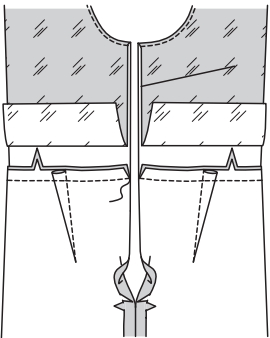


22. Pin WRONG side of the overskirt to the RIGHT side of the skirt, matching centers, seams, large dots, and notches. Baste along seamline on waist and LEFT side edges to the notch.

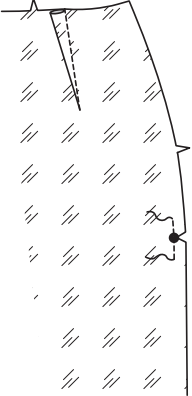
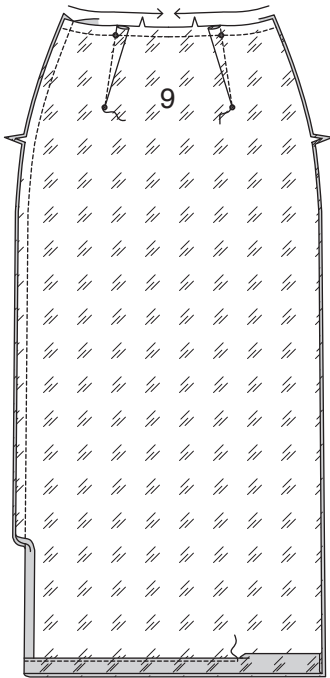


CONTINUE AS FOLLOW FOR BOTH VIEWS

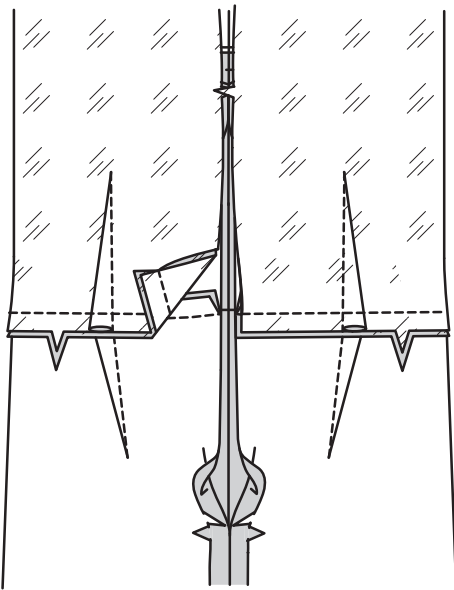
23. Keeping bodice lining free, with RIGHT sides together and raw edges even, pin lower edge of bodice to upper edge of skirt, matching seams and notches. Stitch. Press seam toward bodice.



24. Make darts, stay stitch and stitch SKIRT FRONT AND BACK (9) LINING sections in the same manner as skirt, omitting the clip at the notch. Press up 1-1/4" (3.2cm) on lower edge. Turn under raw edge to meet crease; press. Stitch close to inner pressed edge. **FOR VIEW A** – Reinforce and clip LEFT side edges at the large dots in the same manner as skirt.



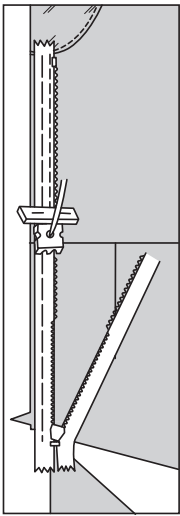
25. FOR BOTH VIEWS – On INSIDE, pin upper edge of skirt lining to lower edge of bodice lining, matching seams and notches. Stitch.



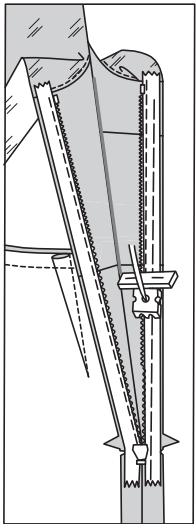
ZIPPER

NOTE: The zipper may be longer than the zipper opening and will be adjusted after the zipper is inserted.

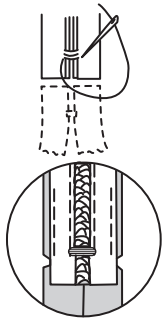
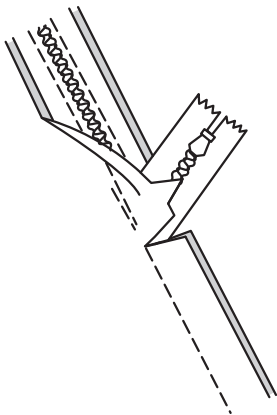
26. Keep lining away from zipper opening. open out left side edges of dress above the notch. Open the zipper and press the tape flat on the WRONG side unrolling the coils. Do not press the coils. (Use a low iron setting.) On OUTSIDE, pin RIGHT side of the zipper face down on the RIGHT side of the zipper opening. Have the coil along the seam line, the tape within the seam allowance and the top stop a scant 1/8" (6mm) below armhole seam, as shown. Hand-baste along center of the tape. Position zipper foot at the top of the zipper with RIGHT groove of the foot over coil. Stitch along tape to lower notch. Back-stitch to reinforce.



27. Pin the remaining half of the zipper to the LEFT side of the zipper opening in same manner. Make sure the upper and lower edges of the garment are even. Hand-baste along the center of the tape. Position zipper foot at the top of the zipper with LEFT groove over the coil. Stitch along tape to the notch. Back-stitch to reinforce.

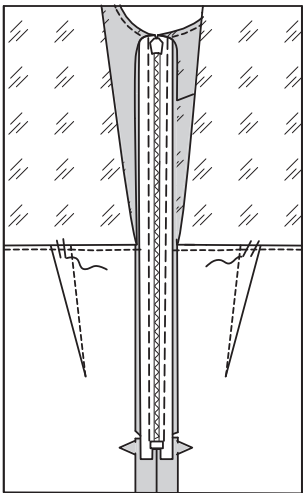


28. Close zipper and check that it is invisible from the OUTSIDE. On INSIDE, pull the free ends of the zipper tape away from the seam allowance. If necessary, stitch remaining seam connecting to previous stitching. If the zipper is longer than the opening, using a strong thread, hand-sew a few small stitches across ends of coils at end of opening. Trim away lower end of zipper tape to within 5/8" (1.5cm) of hand-stitches. If you prefer, open out each seam allowance at end of zipper and stitch tape to seam allowance.

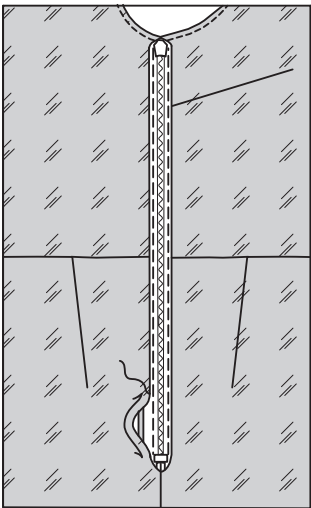


CONTINUE AS FOLLOWS FOR BOTH VIEWS

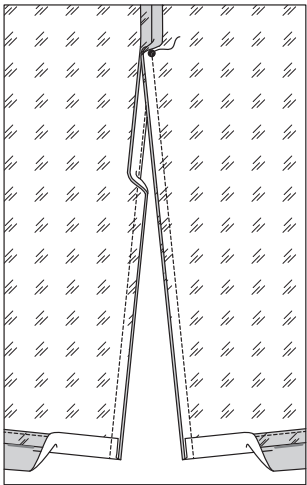
29. Open out lining at one LEFT side edge. On INSIDE, stitch or tack waist seam of dress to waist seam of lining along seam allowance.



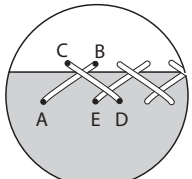
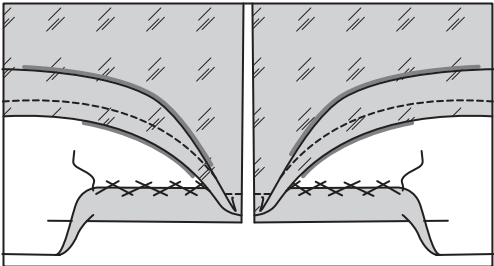
30. Press under a generous 5/8" (1.5cm) on LEFT side opening edges of lining. On INSIDE, pin lining to zipper tape; slipstitch in place.



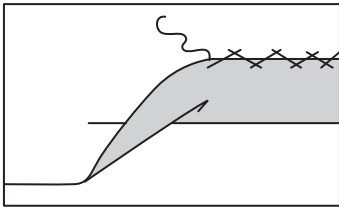
31. FOR VIEW A – Pull up lower edges of dress and lining at LEFT side edges, bringing RIGHT sides together and raw edges even. Pin dress to lining below the large dot, along slit opening edges. Turn lower edge of dress to INSIDE (over lining hem) along 1-1/2" (3.8cm) hemline. Stitch slit edges together from large dot to hemline fold in a 5/8" (1.5cm) seam. Trim seam.



32. Turn slit edges RIGHT side out; press, pressing up the dress hem. On INSIDE, catch stitch hem of dress in place. To catch stitch, bring needle out at A, then spacing the stitch 1/2" (1.3cm) away bring thread to inside at B, and across 1/4" (6mm) coming out at C, and back to inside at D spaced 3/4" (2cm). Continue in the same manner from E.

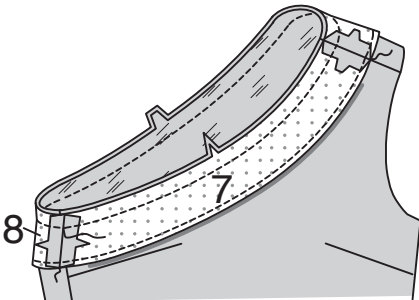


33. FOR VIEW B – Press up 1-1/2" (3.8cm) hem allowance on dress. Catch stitch in place. To catch stitch, bring needle out at A, then spacing the stitch 1/2" (1.3cm) away bring thread to inside at B, and across 1/4" (6mm) coming out at C, and back to inside at D spaced 3/4" (2cm). Continue in the same manner from E. (See step above for catch stitch detail.)

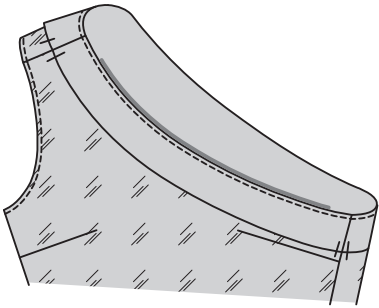


CONTINUE AS FOLLOWS FOR BOTH VIEWS

34. Stitch FRONT FACING (7) to BACK FACING (8) at ends, matching notches. **EDGE FINISH** unnotched edge. With RIGHT sides together and raw edges even, pin facing to dress at upper edge, matching seams and notches. Stitch. Trim seam.

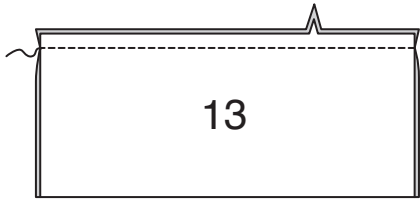


35. UNDERSTITCH the facing. Turn facing to INSIDE; press. To keep facing in place, tack to lining at shoulder and side edges.

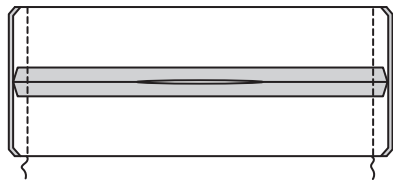


BOW B

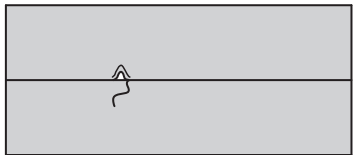
36. Fold LOWER BOW (13) with RIGHT sides together and raw edges even, bringing notched edges together. Stitch across notched, leaving an opening for turning.



37. Fold bow along foldlines, bringing seam to center. Stitch side edges. Trim seam and corners.



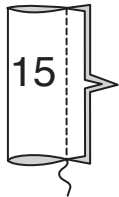
38. Turn bow; press. Slipstitch opening closed.



39. Make UPPER BOW (14) in the same manner. Pin WRONG side of upper bow over the RIGHT side of lower bow. Accordion fold along centerline, and tack or baste together.



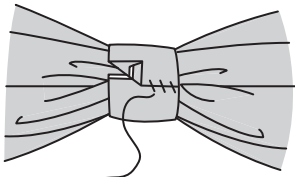
40. Fold KNOT (15) in half, bringing notched edges together. Stitch



41. Turn knot RIGHT side out, bringing seam to center on UNDERSIDE; press



42. Place knot around center of bow, turning under and lapping one end on UNDERSIDE. Slipstitch ends securely, catching in underside of bow. Tack bow to dress over shoulder seam, invisibly, as shown on envelope.

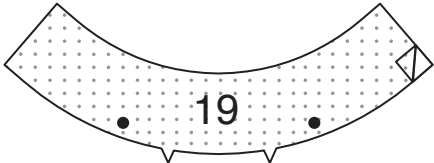


DRESS C, D

NOTE: Trim 1/2" (1.3cm) from lower edge of SKIRT FRONT (20), SKIRT BACK (21), and SKIRT SIDE FRONT AND SIDE BACK (22) LINING sections before stitching seams.

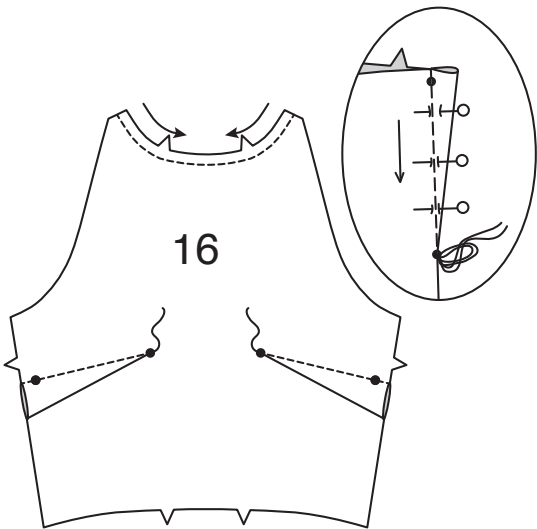
INTERFACING

1. Pin interfacing to WRONG side of COLLAR (19) sections. Fuse interfacing in place following manufacturer's directions.

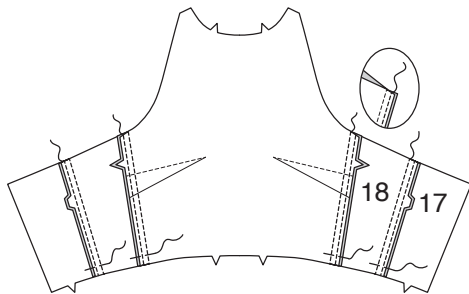


DRESS

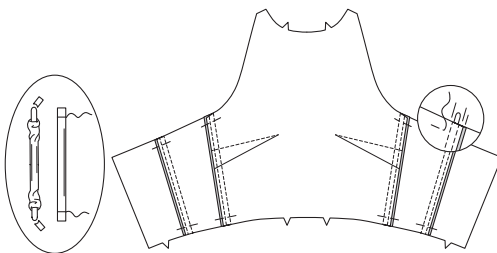
2. STAYSTITCH neck edge of BODICE FRONT (16) in the direction of the arrows. Make **DART(s)** and press down.



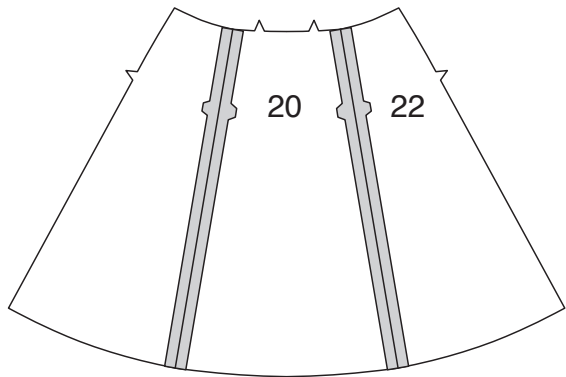
3. With RIGHT sides together and raw edges even, pin BODICE BACK (17) to BODICE SIDE BACK (18) along side back edges, matching notches. Stitch. Stitch bodice front to bodice back at side edges. To make casing for boning, stitch along seam allowances, a generous 3/8" (1cm) from seams. Press seams toward back. Baste across lower edges of casing along the seamline.



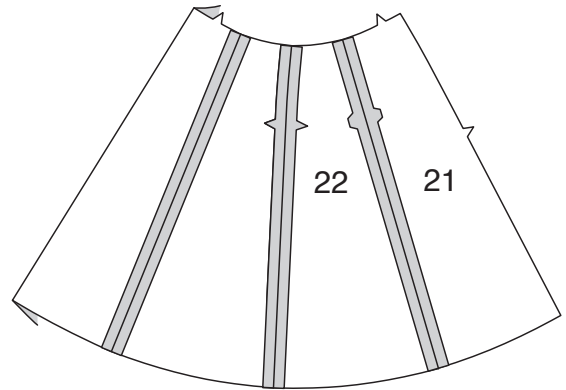
4. Cut a piece of boning the length of each casing, excluding upper and lower seam allowances. Remove boning from casing. Trim 1/4" (6mm) from each end, curving ends, as shown. Insert boning between seam allowances. Baste 5/8" (1.5cm) from upper edge, being careful not to catch in boning.



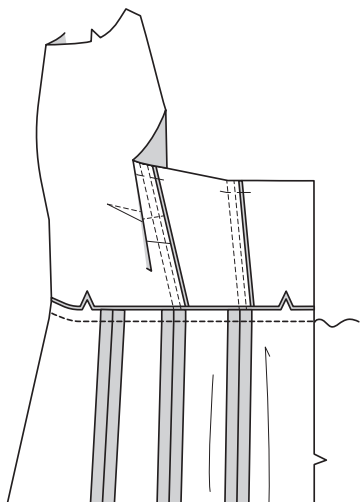
5. With RIGHT sides together and raw edges even, pin SKIRT FRONT (20) to SKIRT SIDE FRONT (22) sections, matching notches. Stitch.



6. With RIGHT sides together and raw edges even, pin SKIRT BACK (22) to SKIRT SIDE BACK (21) sections, matching notches. Stitch.
Stitch skirt front to skirt back at side edges.



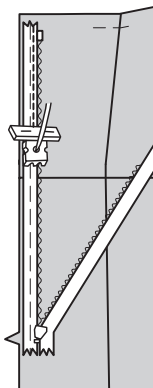
7. With RIGHT sides together and raw edges even, pin lower edge of bodice to upper edge of skirt, matching centers, seams, and notches. Stitch. Press seam toward bodice.



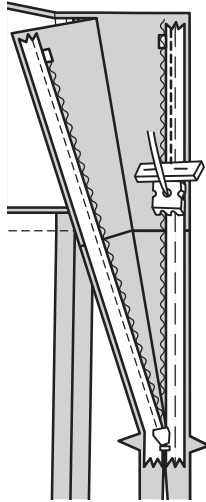
ZIPPER

NOTE: The zipper may be longer than the zipper opening and will be adjusted after the zipper is inserted.

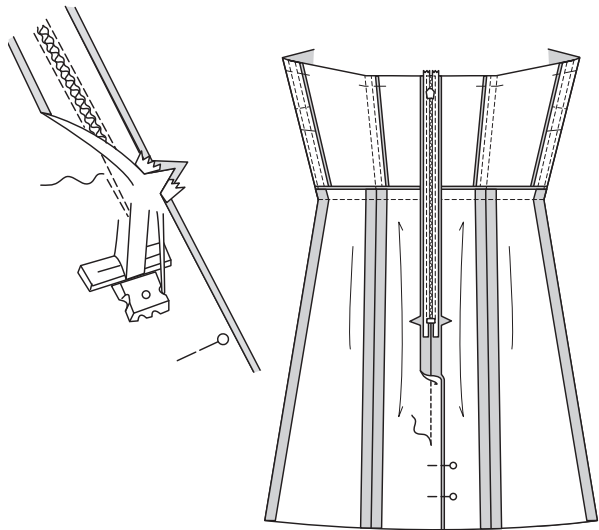
8. Open the zipper and press the tape flat on the WRONG side unrolling the coils. Do not press the coils. (Use a low iron setting.) On OUTSIDE, pin RIGHT side of the zipper face down on the RIGHT side of the zipper opening. Have the coil along the seam line, the tape within the seam allowance and the top stop 3/4" (2cm) below upper edge, as shown. Hand-baste along center of the tape. Position zipper foot at the top of the zipper with RIGHT groove of the foot over coil. Stitch along tape to the notch. Back-stitch to reinforce.



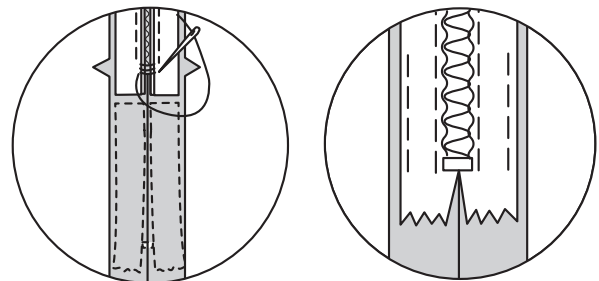
9. Pin the remaining half of the zipper to the LEFT side of the zipper opening in same manner. Make sure the upper and lower edges of the garment are even. Hand-baste along the center of the tape. Position zipper foot at the top of the zipper with LEFT groove over the coil. Stitch along tape to the notch. Back-stitch to reinforce.



10. Close zipper and check that it is invisible from the OUTSIDE.
Pull the free ends of the zipper tape away from the seam allowance. Pin remaining center back seam together below zipper. Position zipper foot all the way to the LEFT so the needle goes down through the outer notch of the foot. Start stitching seam 1/4" (6mm) above lowest stitch and slightly to the LEFT. Stitch seam for about 3" (7.5cm). Stitch remainder of seam using your regular presser foot.

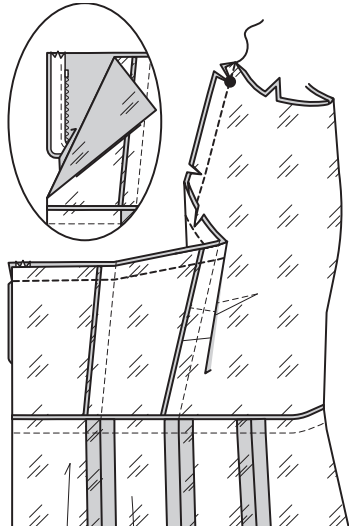


11. If the zipper is longer than the opening, using a strong thread, hand-sew a few small stitches across ends of coils at end of opening. Trim away lower end of zipper tape to within 5/8" (1.5cm) of hand-stitches.
If you prefer, open out each seam allowance at end of zipper and stitch tape to seam allowance.

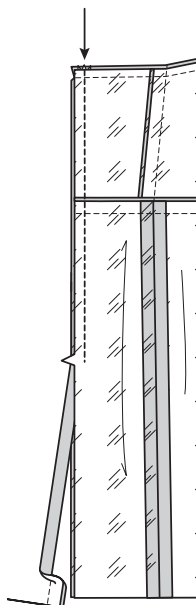


LINING

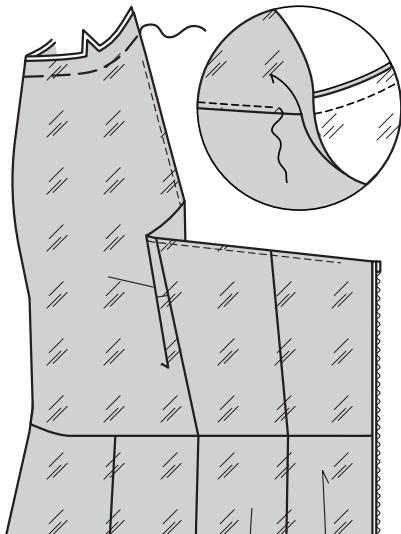
12. Stitch dress lining sections in the same manner as dress, omitting casing for boning.
Open out center back opening edges of dress, rolling the zipper teeth away from the opening edge. With RIGHT sides together, pin lining to dress, matching centers and seams. Stitch upper edge from back opening edge to neck edge. Trim seam; clip curves, and clip to stitching at large dot.



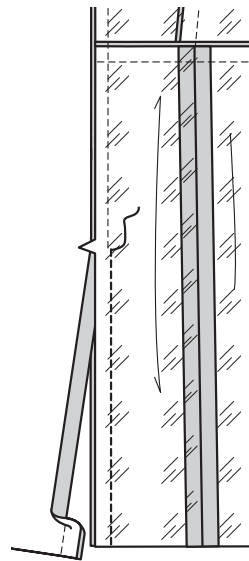
13. Pin back opening edges together. Using an adjustable zipper foot, stitch 1/2" (1.3cm) from back edges, keeping zipper teeth free. Trim corners. Do not trim center back edges.



14. **UNDERSTITCH** the lining, as far as possible. Turn lining and back edges to INSIDE, rolling zipper teeth back in place; press, pressing out neck edge between the clips. Baste lining to dress along neck edge.

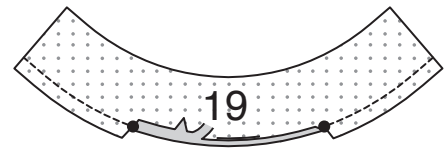


15. On INSIDE, pull out lining. Pin back edges of lining together below zipper. Stitch.

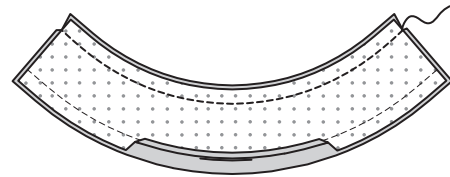


COLLAR

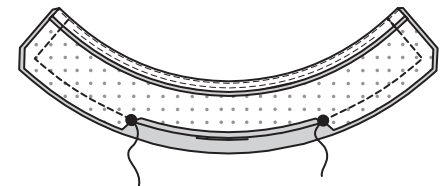
16. Machine-stitch 5/8" (1.3cm) from notched edge of COLLAR (19) facing. Clip notched edge of collar facing to stitching at large dots. Press under a generous 1/2" (1.3cm) on raw edge between the clips. Trim to 1/4" (6mm).



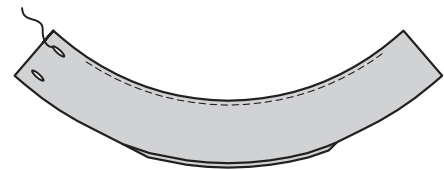
17. With RIGHT sides together, stitch facing to collar along long unnotched edge. Trim seam.



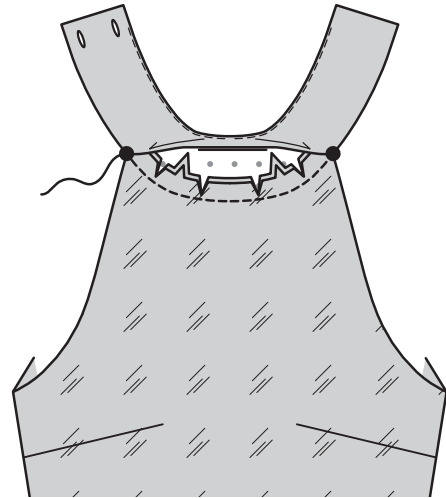
18. **UNDERSTITCH** the facing.
With RIGHT sides together, stitch facing to collar along remaining edges, leaving notched edge open between the large dots. Trim seam and corners.



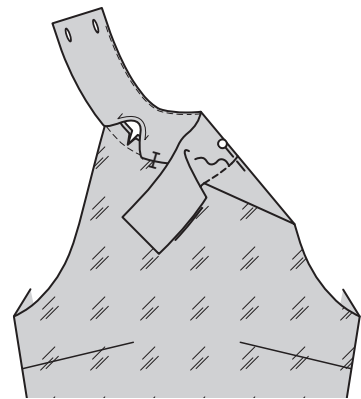
19. Turn collar; press. Make buttonholes at markings.



20. Clip neck edge of dress to basting. With RIGHT sides together and raw edges even, pin collar to dress, matching large dots and notches. Stitch.

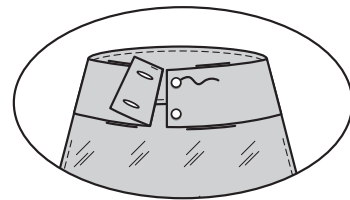


21. Press seam toward collar, pressing collar out. On INSIDE, pin pressed edge of collar over seam, placing pins on OUTSIDE. On OUTSIDE, stitch in the ditch of the seam, catching in pressed edge of collar facing on the INSIDE.



FINISHING

22. On OUTSIDE, Lap LEFT back of collar over RIGHT, matching centers. Sew buttons under buttonholes.



23. To narrow hem dress, press under 1/4" (6mm) on lower edge. Stitch close to pressed edge. Trim close to stitching. Press under another 1/8" (3mm) and stitch in place.
Narrow hem dress lining in the same manner.

