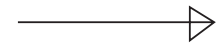
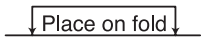


- 1 Front-A,B,C  
2 Side Front-A,B,C  
3 Back-A,B,C  
4 Sleeve-A,B,C  
5 Left Collar-A,B,C  
6 Right Collar-A,B,C  
7 Neck Binding-A,B,C  
8 Guide for Elastic-A,B,C  
9 Upper Ruffle-C  
10 Lower Ruffle-C

## PATTERN MARKINGS



**GRAINLINE:** Place on straight grain of fabric, parallel to selvage or fold.



**FOLDLINE:** Place line on fold of fabric.



**BUTTONHOLE MARKING:** Indicates exact length and placement of buttonholes.



**BUTTON MARKING:** Indicates button placement.



**NOTCHES AND SYMBOLS:** For matching seams and construction details.



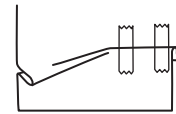
Indicates the Bustline, Waistline, Hip and/or Biceps. Measurements refer to circumference of Finished Garment (Body Measurement + Wearing Ease + Design Ease). Adjust pattern if necessary. The measurement excludes pleats, tucks, darts and seam allowances.

**SEAM ALLOWANCE:** 5/8" (1.5cm) included unless otherwise indicated, but not printed on tissue.

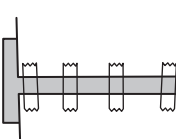
## ADJUST IF NECESSARY

Lengthen or Shorten at adjustment lines (==) or where indicated on pattern. If substantial length is added, you may need to purchase additional fabric.

**TO SHORTEN:** Crease along adjustment line. Make a fold half the amount needed. Tape in place.



**TO LENGTHEN:** Slash between adjustment lines. Spread amount as needed, keeping edges parallel. Tape over paper.



When Alteration lines are not on tissue, lengthen or shorten at lower edge.

## CUTTING AND MARKING

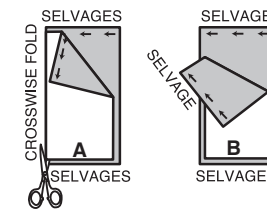
**SHRINK FABRIC** if not labeled pre-shrunk. Press.

**CIRCLE LAYOUT** for View, Size, Fabric Width.

Use **WITH NAP** layout for fabrics with one-way designs, nap, pile or surface shading. Because most knits have surface shading, a with nap layout is used.

For **DOUBLE THICKNESS (WITH FOLD)** - fold fabric with right sides together.

**\* DOUBLE THICKNESS (WITHOUT FOLD)** - For fabrics with nap, fold fabric crosswise, right sides together. Mark as shown. Cut along crosswise fold of fabric (A). Turn upper layer 180° so arrows go in same direction and place over lower layer, right sides together (B).



For **SINGLE THICKNESS** - place fabric right side up. (For Fur Pile fabrics, place pile side down.)

★ Cut other pieces first, allowing enough fabric to cut this piece. Open fabric. For "Cut 1" pieces, cut piece once on single layer of fabric with piece face up on right side of fabric.

Pattern may have cutting lines for several sizes. Select the proper cutting line or pattern pieces for your size.

Before **CUTTING** place all pieces on fabric according to layout. Pin. (**Layouts show approximate position of pattern pieces; position may vary according to your pattern size.**) Cut **ACCURATELY**, cutting notches outward.

Before removing pattern, **TRANSFER MARKINGS** and lines of construction to Wrong Side of fabric, using the Pin and Chalk Pencil method or Tracing Paper and Dressmaker Wheel. Markings needed on right side of fabric should be thread traced.

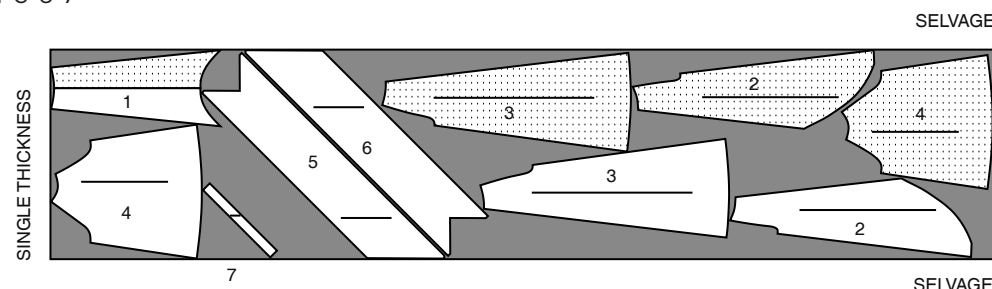
**NOTE:** Broken-line boxes (a! b! c!) in layouts represent pieces cut by measurements provided.

## CUTTING LAYOUTS

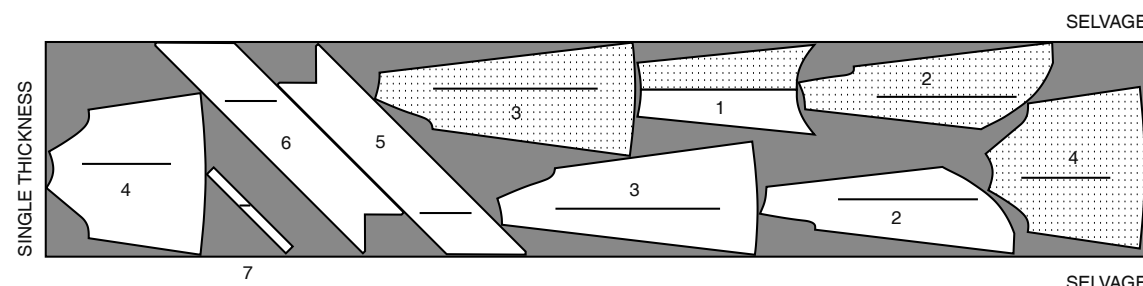
## DRESS A

USE PIECES 1 2 3 4 5 6 7

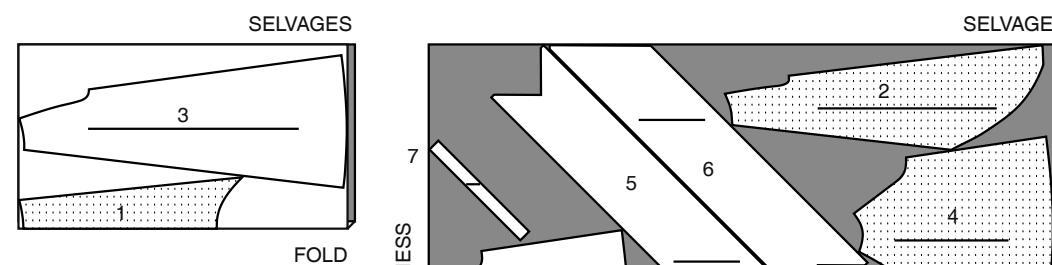
45" (115CM)  
WITH NAP  
SIZES 4 6 8 10 12



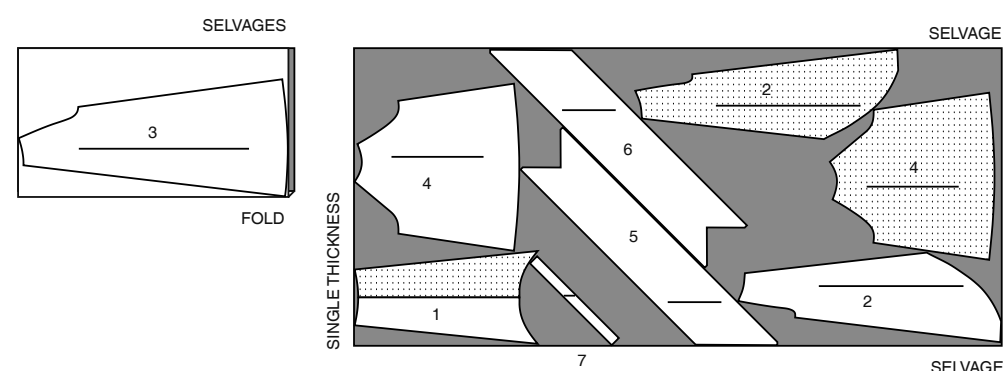
45" (115CM)  
WITH NAP  
SIZES 14 16 18 20 22



60" (150CM)  
WITH NAP  
SIZES 4 6 8 10 12 14



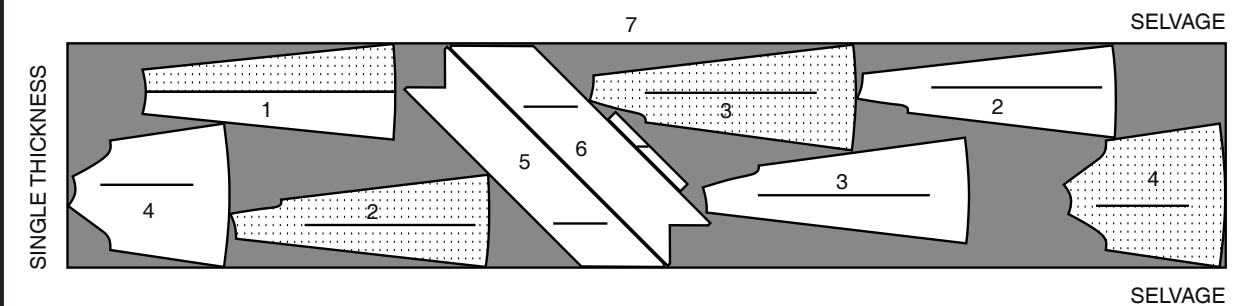
60" (150CM)  
WITH NAP  
SIZES 16 18 20 22



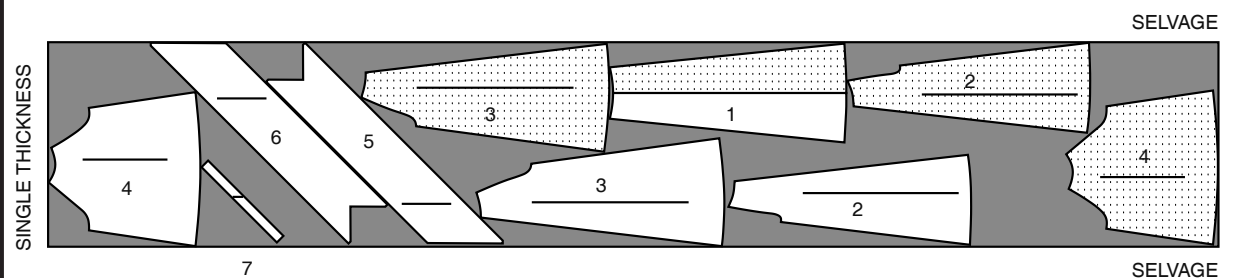
## DRESS B

USE PIECES 1 2 3 4 5 6 7

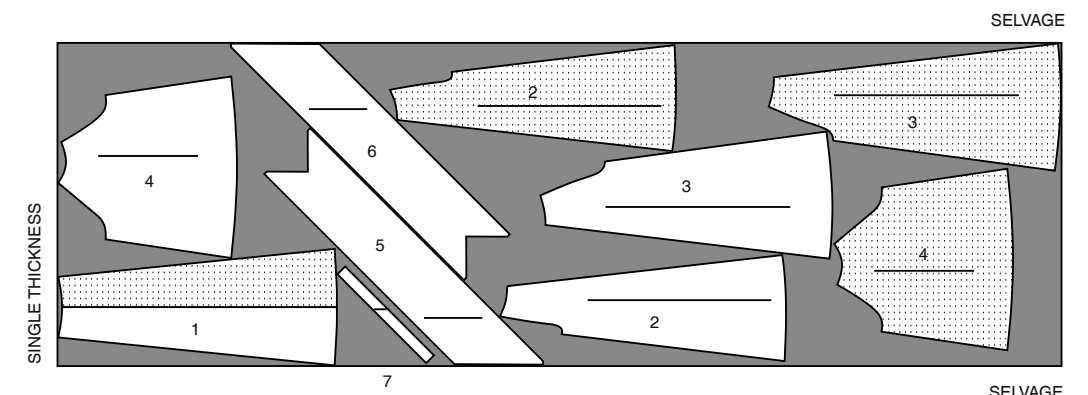
45" (115CM)  
WITH NAP  
SIZES 4 6 8 10 12



45" (115CM)  
WITH NAP  
SIZES 14 16 18 20 22

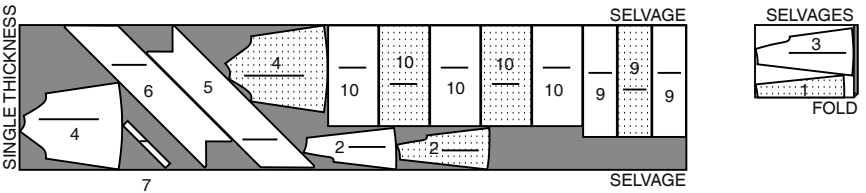


60" (150CM)  
WITH NAP  
ALL SIZES

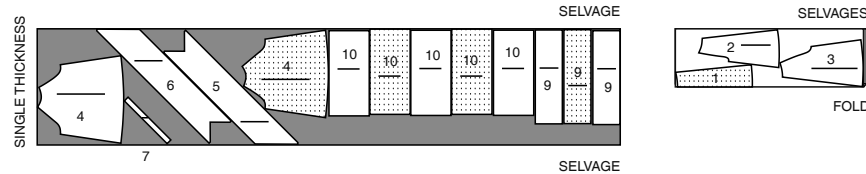


DRESS C  
USE PIECES 1 2 3 4 5 6 7 9 10

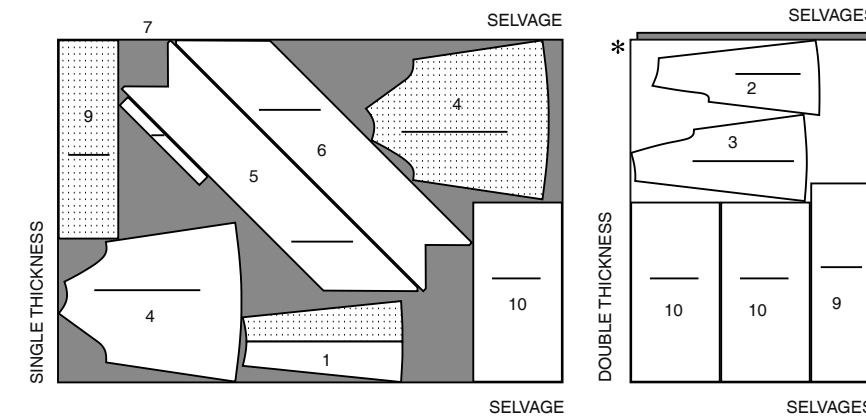
45" (115CM)  
WITH NAP  
SIZES 4 6



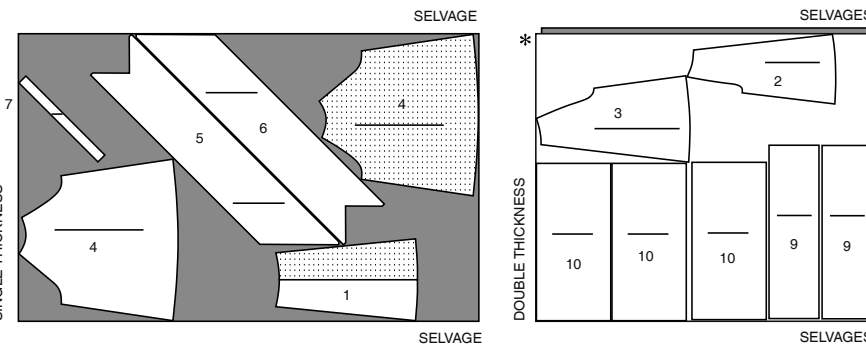
45" (115CM)  
WITH NAP  
SIZES 8 10 12 14 16 18 20 22



60" (150CM)  
WITH NAP  
SIZES 4 6 8 10

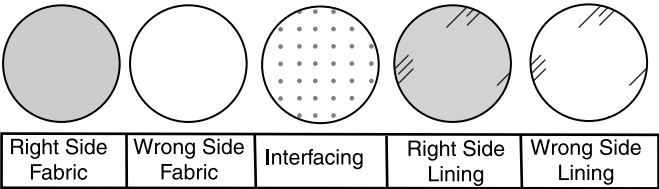


60" (150CM)  
WITH NAP  
SIZES 12 14 16 18 20 22



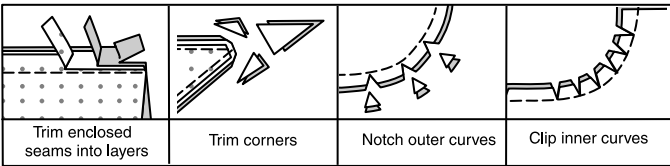
SEWING INFORMATION

FABRIC KEY



SEAM ALLOWANCES

Use 5/8" (1.5cm) seam allowances unless otherwise indicated.



PIN AND FIT

Pin or baste seams, RIGHT SIDE TOGETHER, matching notches.  
Fit garment before stitching major seams.

PRESS

Press seam allowances flat; then open unless otherwise stated.  
Clip where necessary so they lie flat.

GLOSSARY

Sewing methods in **BOLD TYPE** have Sewing Tutorial Video available. Scan QR CODE to watch videos:

**BABY HEM (DESIGNER NARROW HEM)** – See Hems: “sewing a baby hem” video.

**GATHER** – See Gathering: “sewing two row gathers” video.

**NARROW HEM** – See Hems: “sewing narrow hems” video.

SEWING TUTORIALS



Build your skills viewing short, easy-to-follow videos at [simplicity.com/sewingtutorials](http://simplicity.com/sewingtutorials)

**PATTERN PIECES WILL BE IDENTIFIED BY NUMBERS THE FIRST TIME THEY ARE USED.**

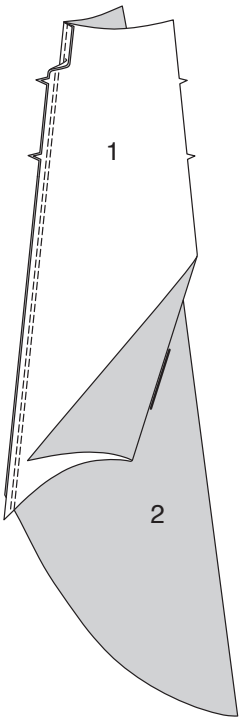
**STITCH 5/8" (1.5CM) SEAMS WITH RIGHT SIDES TOGETHER UNLESS OTHERWISE STATED.**

DRESS A, B, C

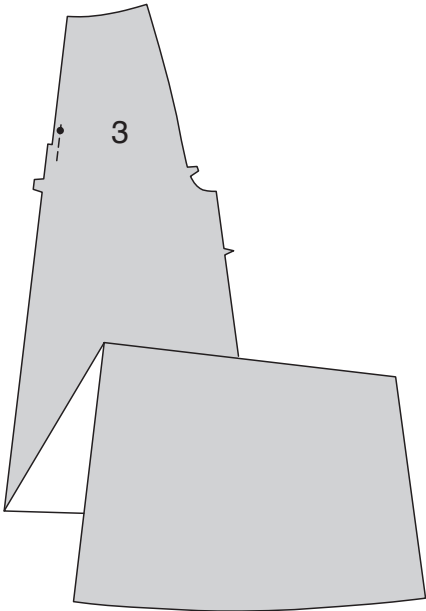
**NOTE: DOUBLE-STITCH** all seams, by stitching along seamline, stitching again 1/4" (6mm) away in seam allowance using a straight or zigzag stitch, and trimming close to stitching OR overlock seam.

FRONT AND BACK

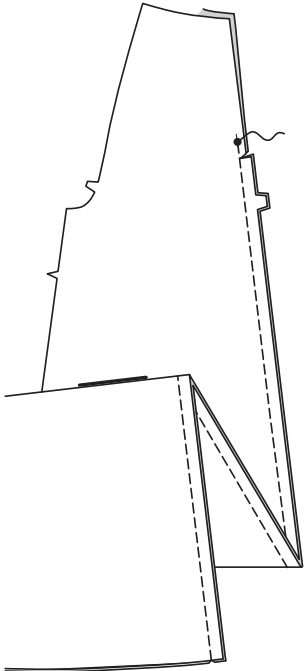
**1.** With RIGHT sides together and raw edges even, pin FRONT (1) to SIDE FRONT (2), matching notches. Stitch. Press seam toward front.



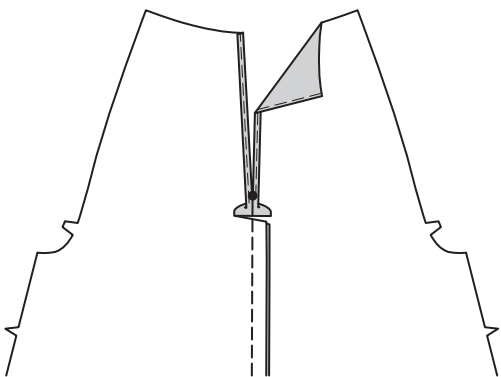
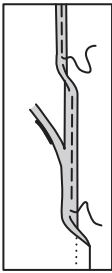
**2.** To reinforce BACK (3) sections at the seamline extension, stitch along seam line for about 1" (2.5cm) each side of extension, as shown.



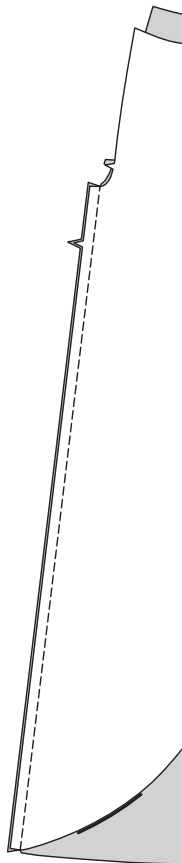
**3.** Stitch center back edges of back sections together from lower edge to large dot, back-stitching at dot to reinforce the seam. Clip seam allowance to stitching at extension edge. Press seam to one side.



**4.** To make a **BABY HEM** on opening back edges, press under 1/4" (6mm) on back edge. Stitch close to pressed edge. Trim close to stitching. Press under another 1/8" (3mm) and stitch in place, squaring stitching just below opening large dot.

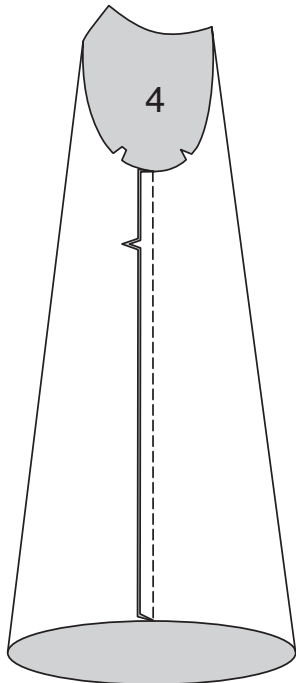


**5.** Stitch front to back at sides. Press seam toward back.



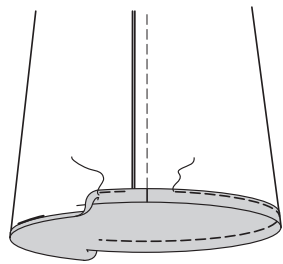
SLEEVE

**6.** Stitch underarm edges of SLEEVE (4). Press seam toward back.

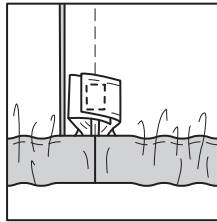




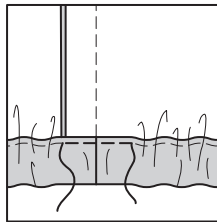
**7.** To form casing for elastic, press under 7/8" (2.2cm) on lower edge of sleeve. Turn under raw edge 1/4" (6mm). Press. Stitch close to inner pressed edge, leaving an opening to insert elastic.



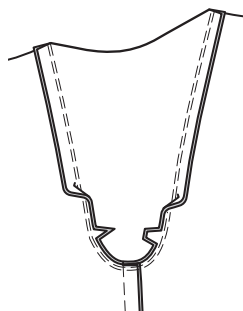
**8.** Cut a piece of 1/2" (1.3cm) wide elastic for each sleeve the length of GUIDE FOR ELASTIC (8). Thread elastic through casing; adjust to fit. Stitch ends of elastic together securely.



**9.** Stitch opening closed. Distribute fullness evenly.  
**TIP** – To secure elastic so it won't twist in wearing, stitch through all thicknesses of casing in the groove of seam.

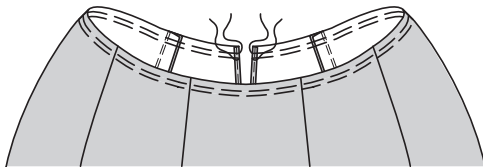


**10.** Turn sleeve RIGHT side out. Hold dress WRONG side out with armhole toward you. With RIGHT sides together, pin sleeve to armhole edge, matching underarm seams and notches. Stitch. Stitch again 1/8" (3mm) from first stitching. Trim seam below notches close to stitching. Press only the seam allowance, shrinking out fullness. Press seam away from sleeve.

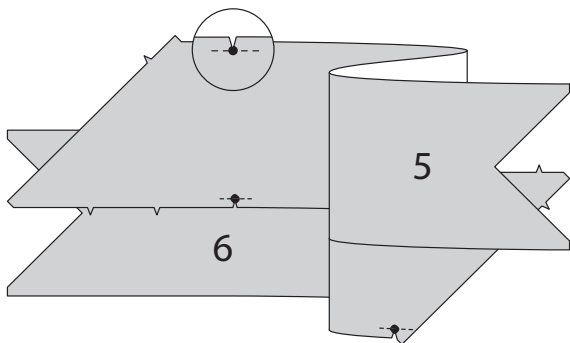


### NECK BINDING AND COLLAR

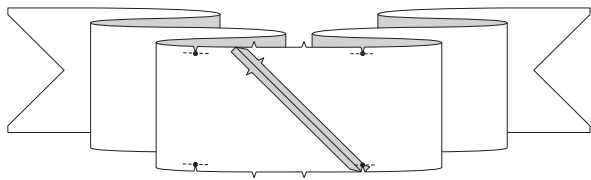
**11.** To **GATHER** neck edge of dress, loosen needle tension slightly. On OUTSIDE, stitch 5/8" (1.5cm) from cut edge using a long stitch. Stitch again 1/4" (6mm) from the first stitching within the seam allowance.



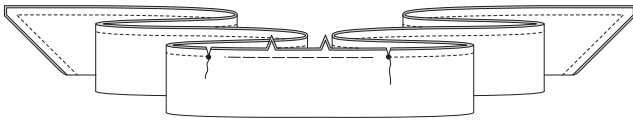
**12.** To reinforce LEFT COLLAR (5) and RIGHT COLLAR (6) sections at the large dots, stitch along seam line for about 1" (2.5cm) each side of large dots, stitching through dots, as shown. Clip to stitching at dots.



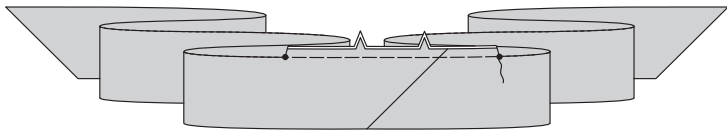
**13.** With RIGHT sides together and raw edges even, pin left collar to right collar, matching notches. Stitch. Trim seam. Press seam open.



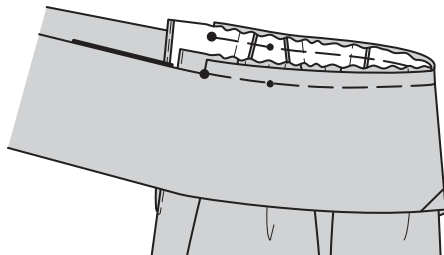
**14.** Fold collar and ties in half lengthwise, with RIGHT sides together, stitch from outer ends to large dot, back-stitching at dot to reinforce the seam. Trim seam.



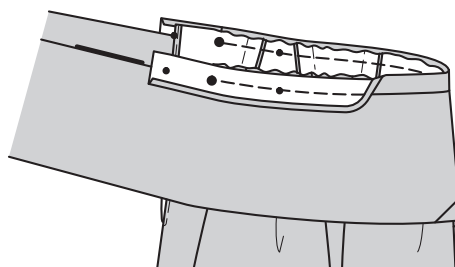
**15.** Turn ties; press. Baste raw edges together.



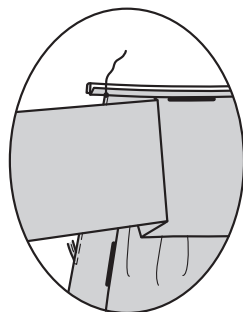
**16.** On OUTSIDE pin collar to neck edge, matching large dots and notches, placing small dots at shoulder, pulling up gathering stitches to fit. Baste.



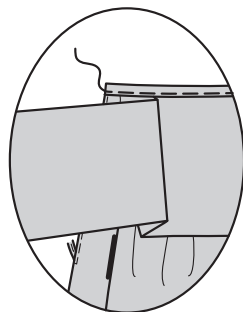
**17.** Press under a scant 5/8" (1.5cm) on unnotched edge of NECK BINDING (7). Trim to 1/4" (6mm). On OUTSIDE, pin neck binding to neck edge (over collar), matching small dots, large dots, and notches. (Binding extends 5/8" (1.5cm) from back opening edges.) Stitch. Trim seam. Press binding out, pressing seam toward binding.



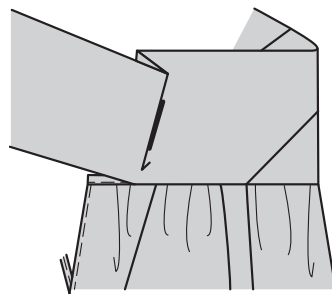
**18.** Turn binding to OUTSIDE, matching small dots at ends. Stitch ends. Trim seam.



**19.** Turn corners of binding RIGHT side out. On INSIDE, pin pressed edge of binding over seam, placing pins on OUTSIDE. On OUTSIDE, stitch binding close to seam, catching in pressed edge of binding facing on the INSIDE.

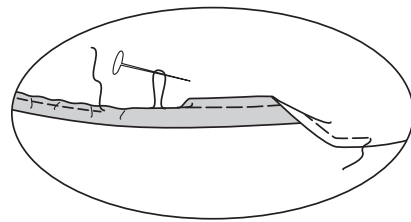


**20.** Press up collar. Fold to OUTSIDE. Press. Tie ends of collar into a bow at back when wearing.



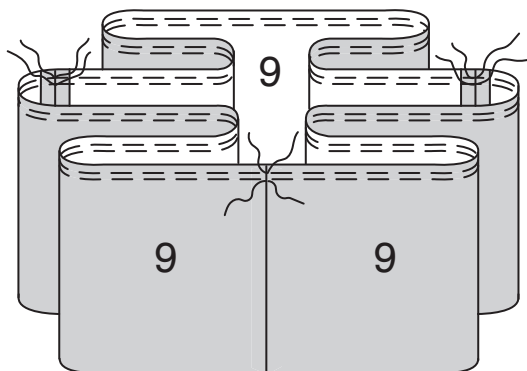
### HEM A, B

**21.** For ease, baste 1/4" (6mm) from lower edge of dress, using a long machine-stitch. Press up 5/8" (1.5cm) hem allowance. Turn under raw edge along stitching, pulling up ease stitches to flatten hem. Stitch close to inner pressed edge.

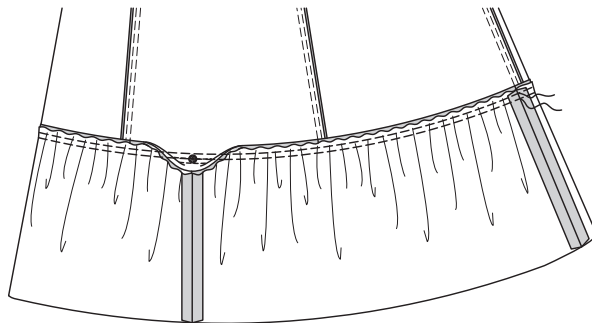


### RUFFLE C

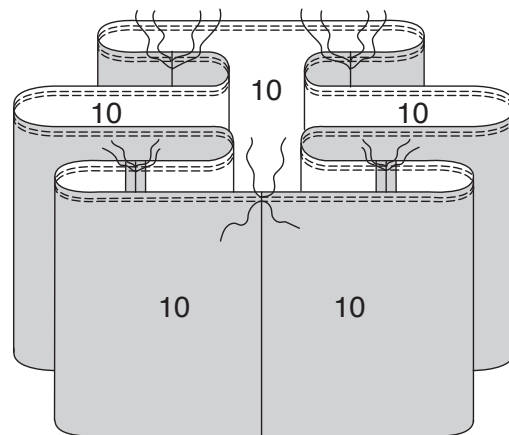
**22.** Stitch ends of three UPPER RUFFLE (9) sections together. To **GATHER** upper edge of upper ruffle, loosen needle tension slightly. On OUTSIDE, stitch 5/8" (1.5cm) from cut edge using a long stitch, breaking stitching at seams. Stitch again 1/4" (6mm) from the first stitching within the seam allowance.



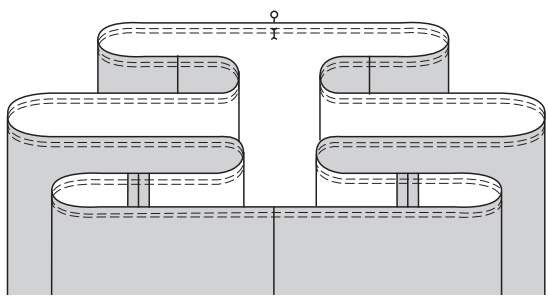
**23.** With RIGHT sides together and raw edges even, pin upper edge of upper ruffle to lower edge of dress, matching center back seams, and placing remaining seams at small dots, pulling up gathering stitches to fit and distributing gathers evenly. Stitch. Press seam toward dress, pressing ruffle out.



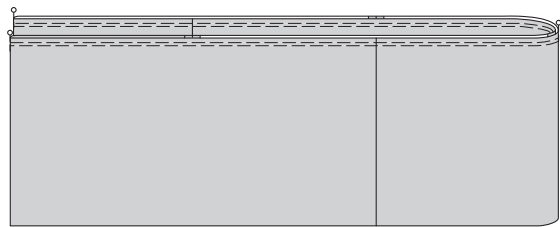
**24.** Stitch ends of five LOWER RUFFLE (10) sections together. To **GATHER** upper edge of upper ruffle, loosen needle tension slightly. On OUTSIDE, stitch 5/8" (1.5cm) from cut edge using a long stitch, breaking stitching at seams. Stitch again 1/4" (6mm) from the first stitching within the seam allowance.



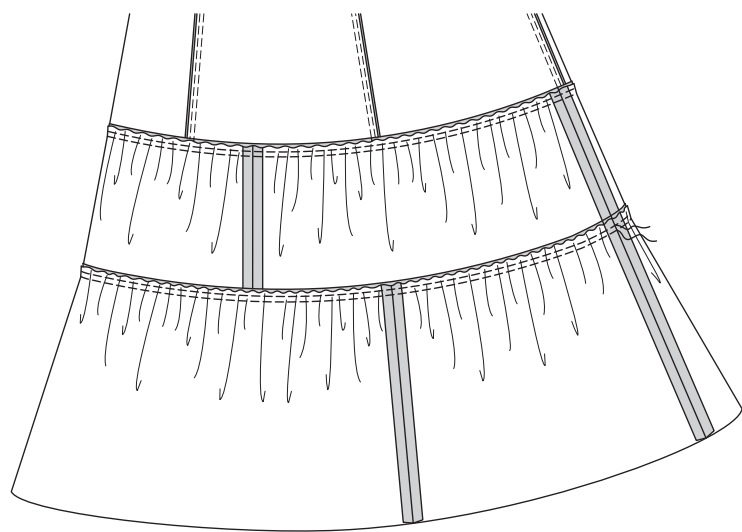
**25.** To divide ruffle into four sections, fold ruffle in half, crosswise along one seam. This will be the center back seam. Place a pin along opposite fold. This will be center front.



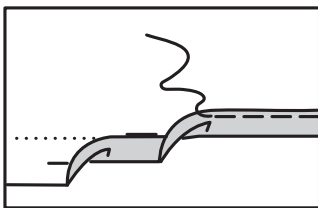
**26.** Fold ruffle in half, crosswise again, bringing pin to center back seam. Mark new folded edges with pins. Ruffle is now divided into four sections.



**27.** With RIGHT sides together and raw edges even, pin upper edge of lower ruffle to lower edge of upper ruffle, matching centers, and placing remaining pin markers below side seams of dress, pulling up gathering stitches to fit and distributing gathers evenly. Stitch. Press seam toward upper ruffle, pressing ruffle out.



**28.** Press under 5/8" (1.5cm) hem allowance. To form a **NARROW HEM**, tuck under raw edge to meet crease. Press. Stitch hem in place.



### FINISHING

**29.** On INSIDE, sew hook and eye fastener to back opening over binding.

