

McCall's®

M18600



Designed and printed in USA

Shop all the pattern brands you love @

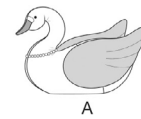
Simplicity®.com

For customers outside of the U.S. and Canada

sewdirect.com

sewdirect.com.au

Average
Moins Facile



PLUSH SWANS IN TWO SIZES

Suggested Fabrics: Broadcloth, Calico, Chintz, Cotton Types, Damask, Eyelet, Gingham, Linen Types, Sateen, Satin. **A, B Contrast 1 (Wings)** also in Faux Fur. **A, B Contrast 2 (Bill)** and **Face Appliqué** in Felt.

Interfacing: Sew-in Foam Stabilizer.

DISCLAIMER: Accessorized swans are not suitable as toys for children 3 years of age or under.

Notions: Polyesterfill, plastic pellets (for bean bag), metallic or glitter craft foam (opt.), fabric glue (opt.), pearl beads (opt.). **Also for A:** Two 12mm safety eyes or 1/2" (1.3cm) shank buttons. **Also for B:** Two 7mm safety eyes.

Large Swan A - 20" L x 15" H

45** - 3/8 yd.

Contrast 1 (Wings): 45** - 3/8 yd., 60** - 1/2 yd.

Contrast 2 (Bill) - 8" x 4" fabric or felt remnant

Interfacing: 20" - 1 yd.

Crown - 6" x 4" craft foam remnant

Face Appliqué - 4" x 3" fabric or felt remnant

Paper-Backed Fusible Web - 4" x 3" remnant

Small Swan A - 13" L x 10" H

45** - 1/2 yd.

Contrast 1 (Wings): 45, 60** - 3/8 yd.

Contrast 2 (Bill) - 8" x 4" fabric or felt remnant

Interfacing: 20" - 3/8 yd.

Crown - 6" x 4" craft foam remnant

Face Appliqué - 4" x 3" fabric or felt remnant

Paper-Backed Fusible Web - 4" x 3" remnant

DES CYGNES EN PELUCHE EN DEUX TAILLES

Tissus Conseillés: Broadcloth, Calicot, Chintz, Types coton, Damas, Broderie anglaise, Vichy, Types toile de lin, Satinette, Satin. **A, B Contraste 1 (Ailes)** aussi en Fourrure Synthétique. **A, B Contraste 2 (Le bec) et appliqué de visage** en Feutre. **Entoilage:** Stabilisateur en mousse à coudre.

AVIS DE NON-RESPONSABILITÉ: Les cygnes avec des accessoires ne sont pas convenables comme des jouets aux enfants de moins de 3 ans.

Mercerie: Fibre de rembourage en polyester, billes de plastique (pour le coussin pouf), mousse pour travaux manuels métallique ou à éclat (fac.), colle à tissu (fac.), perles (fac.). **Aussi pour A:** 2 yeux de sûreté de 12mm ou boutons à tige de 1.3cm. **Aussi pour B:** 2 yeux de sûreté de 7mm.

Grand cygne A - 51cm de longueur x 38cm de hauteur

115cm* - 0.8m

Contraste 1 (Ailes): 115cm* - 0.6m, 150cm* - 0.5m

Contraste 2 (le bec) - Morceau de 20cm x 10cm de tissu ou de feutre

Entoilage: 51cm - 0.9mm

Couronne - Morceau de 15cm x 10cm de stabilisateur de mousse

Appliqué de visage - Morceau de 10cm x 8cm de tissu ou de feutre

Voile thermocollant sur papier - Morceau de 10cm x 8cm

Petit cygne B - 33cm de longueur x 25cm de hauteur

115cm* - 0.5m

Contraste 1 (Ailes): 115, 150cm* - 0.3m

Contraste 2 (le bec) - Morceau de 20cm x 10cm de tissu ou de feutre

Entoilage: 51cm - 0.6m

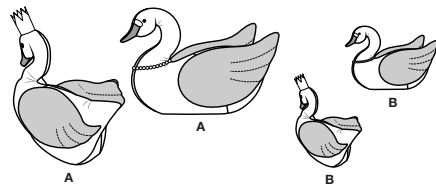
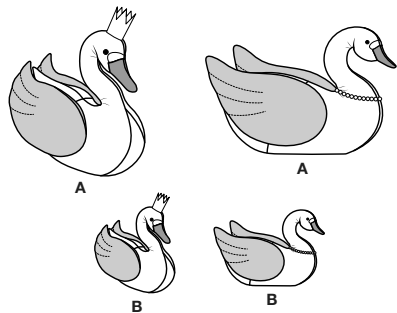
Couronne - Morceau de 15cm x 10cm de stabilisateur de mousse

Appliqué de visage - Morceau de 10cm x 8cm de tissu ou de feutre

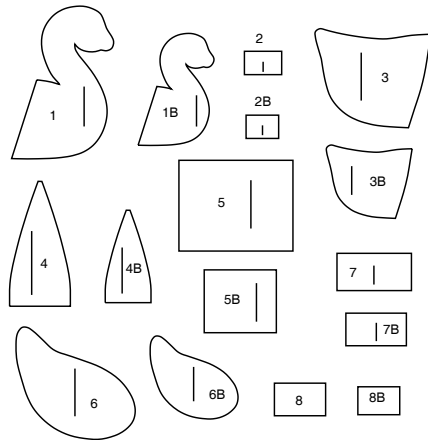
Voile thermocollant sur papier - Morceau de 10cm x 8cm

*with nap **without nap

*avec sens **sans sens

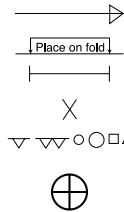


8 PATTERN PIECES



- 1 BODY FRONT - A
- 1B BODY FRONT - B
- 2 FACE APPLIQUE - A
- 2B FACE APPLIQUE - B
- 3 BODY BACK - A
- 3B BODY BACK - B
- 4 BOTTOM - A
- 4B BOTTOM - B
- 5 BEANBAG - A
- 5B BEANBAG - B
- 6 WING - A
- 6B WING - B
- 7 BILL - A
- 7B BILL - B
- 8 CROWN - A
- 8B CROWN - B

PATTERN MARKINGS



GRAINLINE: Place on straight grain of fabric, parallel to selvage or fold.

FOLDLINE: Place line on fold of fabric.

BUTTONHOLE MARKING: Indicates exact length and placement of buttonholes.

BUTTON MARKING: Indicates button placement.

NOTCHES AND SYMBOLS: For matching seams and construction details.

Indicates the Bustline, Waistline, Hip and/or Biceps. Measurements refer to circumference of Finished Garment (Body Measurement + Wearing Ease + Design Ease). Adjust pattern if necessary. The measurement excludes pleats, tucks, darts and seam allowances.

SEAM ALLOWANCE: 5/8" (1.5cm) included unless otherwise indicated, but not printed on tissue.

ADJUST IF NECESSARY

Lengthen or Shorten at adjustment lines (==) or where indicated on pattern. If substantial length is added, you may need to purchase additional fabric.

TO SHORTEN: Crease along adjustment line. Make a fold half the amount needed. Tape in place.

TO LENGTHEN: Slash between adjustment lines. Spread amount as needed, keeping edges parallel. Tape over paper.

When Alteration lines are not on tissue, lengthen or shorten at lower edge.

CUTTING AND MARKING

SHRINK FABRIC if not labeled pre-shrunk. Press.

CIRCLE LAYOUT for View, Size, Fabric Width.

Use **WITH NAP** layout for fabrics with one-way designs, nap, pile or surface shading. Because most knits have surface shading, a with nap layout is used.

For **DOUBLE THICKNESS (WITH FOLD)** - fold fabric with right sides together.

*** DOUBLE THICKNESS (WITHOUT FOLD)** - For fabrics with nap, fold fabric crosswise, right sides together. Mark as shown. Cut along crosswise fold of fabric (A). Turn upper layer 180° so arrows go in same direction and place over lower layer, right sides together (B).

For **SINGLE THICKNESS** - place fabric right side up. (For Fur Pile fabrics, place pile side down.)

★ Cut other pieces first, allowing enough fabric to cut this piece. Open fabric. For "Cut 1" pieces, cut piece once on single layer of fabric with piece face up on right side of fabric.

Pattern may have cutting lines for several sizes. Select the proper cutting line or pattern pieces for your size.

Before **CUTTING** place all pieces on fabric according to layout. Pin. (Layouts show approximate position of pattern pieces; position may vary according to your pattern size.) Cut **ACCURATELY**, cutting notches outward.

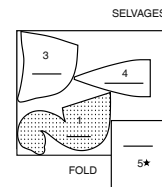
Before removing pattern, **TRANSFER MARKINGS** and lines of construction to Wrong Side of fabric, using the Pin and Chalk Pencil method or Tracing Paper and Dressmaker Wheel. Markings needed on right side of fabric should be thread traced.

NOTE: Broken-line boxes (a! b! c!) in layouts represent pieces cut by measurements provided.

CUTTING LAYOUTS

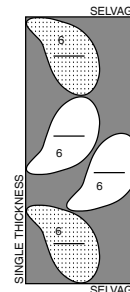
LARGE SWAN
USE PIECES 1 3 4 5

45" (115CM)
WITH NAP



CONTRAST 1 (WINGS)
USE PIECE 6

45" (115CM)
WITH NAP



60" (150CM)
WITH NAP



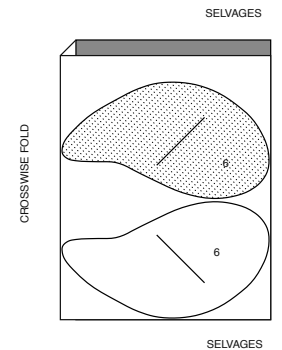
CONTRAST 2 (BILL)

CUT ONE OF PIECE 7 FROM FABRIC OR FELT REMNANT.

INTERFACING

USE PIECE 6

20" (51CM)



CROWN

CUT ONE OF PIECE 8 FROM CRAFT FOAM REMNANT.

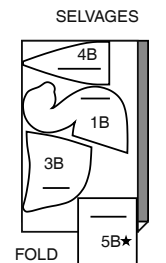
FACE APPLIQUE

CUT ONE OF PIECE 2 FROM EACH FABRIC OR FELT AND PAPER-BACKED FUSIBLE WEB REMNANTS.

SMALL SWAN

USE PIECES 1B 3B 4B 5B

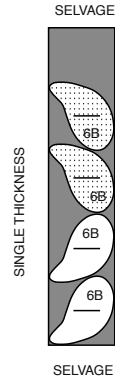
45" (115CM)
WITH NAP



CONTRAST 1 (WINGS)

USE PIECE 6B

45" OR 60" (115CM OR 150CM)
WITH NAP



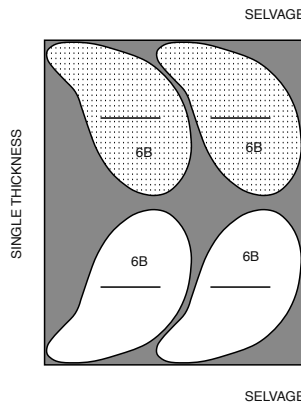
CONTRAST 2 (BILL)

CUT ONE OF PIECE 7B FROM FABRIC OR FELT REMNANT.

INTERFACING

USE PIECE 6B

20" (51CM)



CROWN

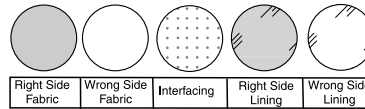
CUT ONE OF PIECE 8B FROM CRAFT FOAM REMNANT.

FACE APPLIQUE

CUT ONE OF PIECE 2B FROM EACH FABRIC OR FELT AND PAPER-BACKED FUSIBLE WEB REMNANTS.

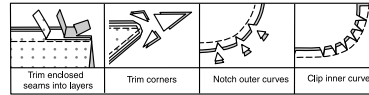
SEWING INFORMATION

FABRIC KEY



SEAM ALLOWANCES

Use 3/8" (1cm) seam allowances unless otherwise indicated.



PIN AND FIT

Pin or baste seams, **RIGHT SIDE TOGETHER**, matching notches. Fit garment before stitching major seams.

PRESS

Press seam allowances flat; then open unless otherwise stated. Clip where necessary so they lie flat.

GLOSSARY

Sewing methods in **BOLD TYPE** have Sewing Tutorial Video available. Scan QR CODE to watch videos:

GATHER – Stitch along seamline and again 1/8" (3mm) away in seam allowance, using long machine stitches. Pull thread ends when adjusting to fit. See **Gathering: "sewing two row gathers"** video.

REINFORCE – Stitch along stitching line where indicated in sewing instructions, using small machine stitches.

See Machine **Stitches: "how to reinforce seams"** video.

SLIPSTITCH – Slide needle through a folded edge, then pick up a thread of underneath fabric.

See Hand **Stitching: "how to slip stitch"** video.

TACK – see Hand **Stitching: "how to tack"** video.

TRIM SEAM – see **Seams: "how to trim, clip and layer seams"** video.

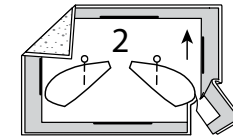
SEWING TUTORIALS



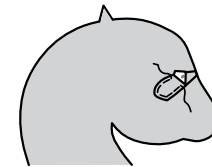
Build your skills viewing short, easy-to-follow videos at simplicity.com/sewingtutorials

GENERAL DIRECTIONS FOR APPLIQUES

A. PREPARE- Apply paper backed fusible web to **WRONG** side of applique fabric, following manufacturer's directions.
Cut applique tissue block along outer solid line. Pin pattern to **RIGHT** side of prepared fabric. Cut out applique. Transfer markings to **RIGHT** side of applique using a washable fabric marking pen or pencil.

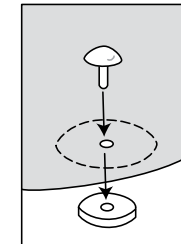


B. APPLY- Pin applique(s) to garment as instructed in Sewing Directions. A glue stick can be used to temporarily hold the applique(s) in place before stitching. Fuse appliques in place, following manufacturer's directions.) Straight OR Zig-zag (satin) stitch along raw edges and/or broken lines or use fabric paint to seal the edges if you prefer. Allow paint to dry before you continue.
NOTE: Stitching will not be shown in further illustrations.



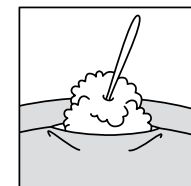
GENERAL DIRECTIONS FOR SAFETY EYES

• **SAFETY EYES** - Before stitching seams, reinforce eyes or nose area so that the plastic eyes and nose don't pull through the fabric. Cut 1" (2.5cm) circles from remnants of fusible interfacing. Fuse circles to **WRONG** side of head underneath small dots for eyes or nose, following manufacturer's directions.
To attach each eye or nose, using a sharp pointed object or an awl, poke a hole at small dots. Insert the eye or nose shank through the opening from **OUTSIDE** and secure on **INSIDE**, following manufacturer's instructions.



GENERAL DIRECTIONS FOR STUFFING

• **STUFF-** Pull fiberfill apart and fluff it before you use it. Break apart the lumps and thick spots. This will help to create a smoother looking project.
Use pieces about the size of a tennis ball. Pack into place using the end of a long handled wooden spoon or chop-stick.
Use small pieces and pack into place using the end of a crochet hook or chop-stick. Pack firmly in place each time stuffing is added. Use both hands to mold and shape, being careful not to over stuff or make lopsided.

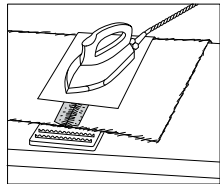


SIMPLY THE BEST SEWING TECHNIQUES FOR FUR FABRICS

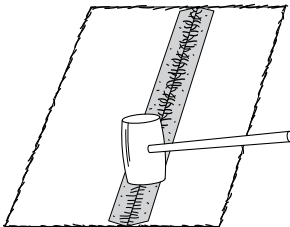
A. Hand-baste seams to prevent slipping. Gather by hand. For high pile fabrics, shear away 3/8" (1cm) within the seam allowance.



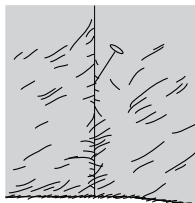
B. Never place iron directly on fur fabric. Press on **WRONG** side, using a velvet board and cloth.



C. Heavier fur fabrics may need some pounding with a heavy object to keep seams and edges flat.



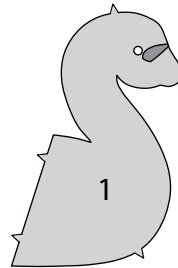
D. On **OUTSIDE**, with a pin, pick the pile up along the seams. **IMPORTANT:** When using deep pile furs, use a longer stitch and looser tension when stitching. Release the presser foot of the machine if the fabric is especially thick.



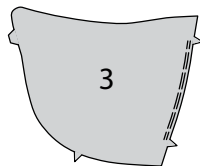
SWAN A, B

NOTE: All seam allowances are 3/8" (1cm) unless otherwise indicated. View A will be illustrated unless otherwise indicated. For smaller size, use pattern pieces designated with the letter "B" following the piece number.

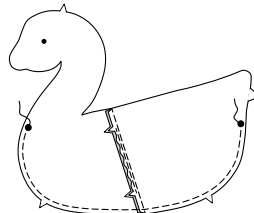
1. PREPARE FACE APPLIQUE (2). APPLY applique to each **FRONT** (1) section, along placement lines.



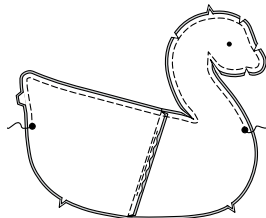
2. GATHER BODY BACK (3) sections between notches.



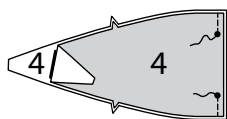
3. With **RIGHT** sides together, pin body back to front, match notches. Adjust gathers to fit. Baste. Stitch in a 3/8" (1cm) seam. Press seam toward front. Machine-stitch 3/8" (1cm) lower edge between large dots.



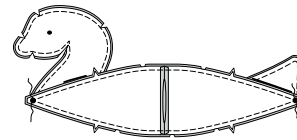
4. With **RIGHT** sides together, pin body sections together having raw edges even. Stitch upper edge ending at large dots, pivoting with needle in fabric at inner large dot at neck. Back-stitch to reinforce seam. Trim seam. Clip curve, and to inner corners as shown.



5. With **RIGHT** sides together, stitch straight edge of **BOTTOM** (4) sections in a 3/8" (1cm) seam, leaving an opening between inner small dots.

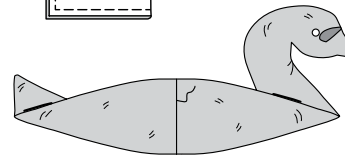
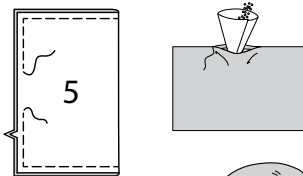


6. With **RIGHT** sides together, pin bottom to lower edge of swan, matching large and small dots, clipping to stitching as necessary. Stitch, breaking stitching at large dots.

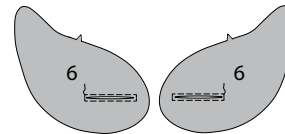


7. Fold **BEANBAG** (5) in half lengthwise, with **RIGHT** sides together. Stitch outer edge of beanbag, leaving an opening for turning. **TRIM SEAM.** Turn bag **RIGHT** side out. Fill with plastic pellets. **SLIPSTITCH** opening closed. Turn swan **RIGHT** side out through bottom opening. Press. **STUFF**, leaving enough space to insert beanbag. Insert bean bag at bottom, adjusting stuffing as necessary. **SLIPSTITCH** opening closed.

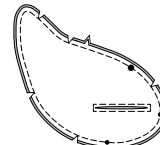
TIP: To make it easier to fill your project with plastic pellets, make a paper funnel by rolling up a rectangle of paper. Have a wider opening at the top and about a 1/2" (1.3cm) opening at the bottom. Place the small end in the opening. Use a small measuring cup to pour the plastic pellets into the top of the funnel.



8. REINFORCE two **WING** (6) sections along stitching line. Slash along slash line, between stitching.



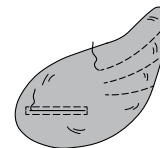
9. With **RIGHT** sides together, pin one slashed wing to wing, having raw edges even. Stitch in a 3/8" (1cm) seam. **TRIM SEAM.** Clip curves.



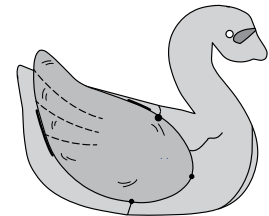
10. Turn wing **RIGHT** side out, through opening. Lightly **STUFF** wing, leaving less stuffing on end with small and large dots. **SLIPSTITCH** opening closed.

Top-stitch outer edge of wing, moving stuffing out of the away while stitching.

NOTE: Top-stitching optional if using fur.



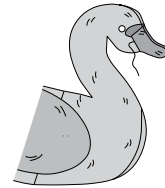
11. With opening facing down, on **OUTSIDE**, pin wing to each side of body, matching small and large dots. Securely **SLIPSTITCH** wing in place.



12. Pin **BILL** (7) sections together, having raw edges even. Stitch notched edge in a 3/8" (1cm) seam. **TRIM SEAM.** Turn bill **RIGHT** side out. Press. Lightly **STUFF** bill.

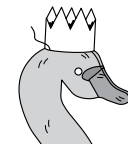


13. On **OUTSIDE**, pin bill to front, matching seams, having raw edge of bill along lap lines as shown. Invisibly **SLIPSTITCH** bill in place.

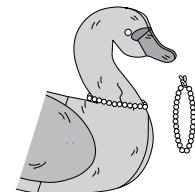


FINISHING

14. FOR CROWN- ON OUTSIDE, Glue along edge with lap line, as shown. Bring ends of crown together, lapping ends as shown. Pin crown to head of swan and hand-**TACK** or glue in place.



15. FOR PEARLS- Cut a piece of tread or string the width of neck of swan plus 8" (20cm). Thread beads and tie in a knot. Pin beads to neck of swan and hand-**TACK** in place.





Congrats!

You've completed your sewing adventure

SHARE YOUR LOOK



Post your pattern and tag us using [#simplicitypatterns](#)
[@simplicity_creative_group](#)
[@simplicitymccallsuk](#)
[@simplicitymccallsaustralia](#)
for a chance to be featured on our social media.

Look for more PDF patterns at [simplicity.com](#) or for customers outside the U.S. and Canada visit [sewdirect.com](#) and [sewdirect.com.au](#)

Have a question or need help with your sewing project contact us:
[Simplicity.com](#) [Sewdirect.com](#) [Sewdirect.com.au](#)

McCall's
by **design**_{group}

McCall's ©2025 a division of IG Design Group Americas Inc. • Atlanta, GA 30342 USA [www.thedesigngroup.com](#) • All Rights Reserved. [www.mccall.com](#) • Made in the U.S.A. Fabriqué aux États-Unis.
To be used for individual private home use only and not for commercial or manufacturing purposes. • A usage privé seulement et non à des fins commerciales ou de production en série. • Para uso privado solamente, no se puede utilizar con propósitos de comercialización o de producción en serie.