

McCall's

M8599



Designed and
printed in USA

Shop all the pattern brands you love at

Simplicity.com

For customers outside of the U.S. and Canada

sewdirect.com

sewdirect.com.au



A



B



C

Average
Moins Facile

18" (46CM) PATCHWORK PLUSH BEARS

Suggested Fabrics: Calico, Chambray, Cotton Types, Eyelet, Flannel, Gingham, Linen Types, Seersucker. **Appliques A,B,C** in Fleece.

Notions: A,B,C: Polyfill, two 18mm safety eyes, one 15mm - 18mm safety nose. **Also for A:** $\frac{3}{4}$ yd. (0.8m) of $\frac{1}{4}$ " (1cm) lace edging, $\frac{1}{4}$ yd. (0.8m) of $\frac{3}{8}$ " (1.5cm) ribbon, $\frac{1}{4}$ yd. (0.5m) of $\frac{1}{4}$ " (1cm) ribbon, one decorative shank button, fabric glue. **Also for B:** $1\frac{1}{2}$ yds. (1.1m) of mini puffball trim, $1\frac{1}{2}$ yds. (1.4m) of $\frac{3}{8}$ " (1cm) ribbon, embroidery floss, fabric glue. **Also for C:** $\frac{1}{2}$ yd. (0.5m) of $\frac{3}{8}$ " (1cm) lace edging.

Bear A,B,C

Head Center, Chin, Body, Upper Arms, Inner Legs

45" - $\frac{3}{4}$ yd.

Contrast 1 (Head Side, Outer Ears, Hands)

45" - $\frac{3}{4}$ yd.

Contrast 2 (Inner Ears, Soles)

45" - $\frac{1}{4}$ yd.

Contrast 3 (Inner Arms, Outer Legs)

45" - $\frac{3}{4}$ yd.

Heart Appliqué A

5" x 5" remnant in each of fabric and paper-backed fusible web

Appliques B

Hearts - 5" x 10" remnant

Leaves - 4" x 4" remnant

Paper-backed fusible web - 10" x 9" remnant

Appliques C

Large Flowers - 7" x 7" remnant

Large Flower Centers - 4" x 5" remnant

Small Flowers - 5" x 3" remnant

Small Flower Centers - 4" x 2" remnant

Leaves - 4" x 6" remnant in two different colors

Paper-backed fusible web - 17" - $\frac{3}{4}$ yd.

DES OURS PATCHWORK EN PELUCHE DE 46CM

Tissus Conseillés: Calicot, Chambray, Types coton, Broderie anglaise, Flannelle, Vichy, Types toile de lin, Seersucker. **Appliqués A,B,C** en Molleton.

Merçerie: A, B, C: Fibre de rembourrage en polyester, deux yeux de sûreté de 18mm, 1 nez de sûreté de 15mm - 18mm. **Aussi pour A:** 0.8m de bordure de dentelle de 1 cm, 0.8m de ruban de 1.5 cm, 0.5m de ruban de 1 cm, 1 bouton décoratif à tige, colle à tissu. **Aussi pour B:** 1.1m de galon de mini boules, 1.4m de ruban de 1 cm, fil à broder, colle à tissu. **Aussi pour C:** 0.5m de bordure de dentelle de 1 cm.

Ours A,B,C

Milieu de tête, Menton, Corps, Dessus de bras,

Intérieurs de jambe

115cm* - 0.6m

Contraste 1 (Côté de tête, Oreilles extérieures,

Mains)

115cm* - 0.3m

Contraste 2 (Intérieurs d'oreille, Semelles)

115cm* - 0.2m

Contraste 3 (Intérieurs de bras, Jambes extérieures)

115cm* - 0.3m

Appliqué de cœur A

Morceau de 13cm x 13cm dans chacun de tissu et de voile thermocollant sur papier

Appliques B

Cœurs - Morceau de 13cm x 25cm

Feuilles - Morceau de 10cm x 10cm

Voile thermocollant sur papier - Morceau de 25cm x 23cm

Appliques C

Fleurs grandes - Morceau de 18cm x 18cm

Centres de fleur grande - Morceau de 25cm x 10cm

Fleurs petites - Morceau de 13cm x 8cm

Centres de fleur petite - Morceau de 10cm x 5cm

Feuilles - Morceau de 10cm x 15cm en deux couleurs différentes

Voile thermocollant sur papier - 43cm - 0.4m

*with nap **without nap

*avec sens **sans sens

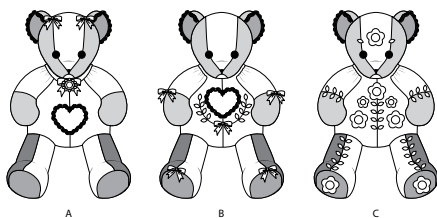
M8599

Page 1 of 4

McCall's®

English

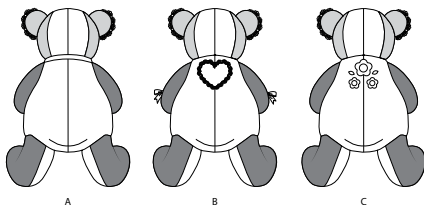
1-800-782-0323



A

B

C

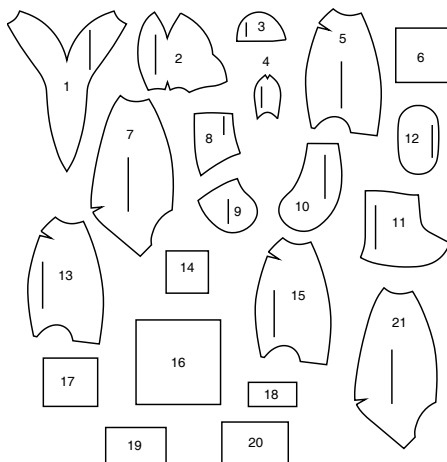


A

B

C

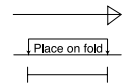
21 PATTERN PIECES



1 HEAD CENTER - A,B,C 2
HEAD SIDE - A,B,C
3 EAR - A,B,C
4 CHIN - A,B,C
5 BODY FRONT - A
6 HEART APPLIQUE - A,B 7
BODY BACK - A,B
8 UPPER ARM - A,B,C
9 HAND - A,B,C
10 INNER ARM - A,B,C 11
LEG - A,B,C

12 SOLE - A,B,C
13 BODY FRONT - B
14 LEAVES APPLIQUE - B
15 BODY FRONT - C
16 LARGE FLOWER APPLIQUE - C
17 LARGE FLOWER CENTER APPLIQUE - C
18 SMALL FLOWER APPLIQUE - C
19 SMALL FLOWER CENTER APPLIQUE - C
20 LEAVES APPLIQUE - C
21 BODY BACK - C

PATTERN MARKINGS



GRAINLINE: Place on straight grain of fabric, parallel to selvage or fold.

FOLDLINE: Place line on fold of fabric.

BUTTONHOLE MARKING: Indicates exact length and placement of buttonholes.

BUTTON MARKING: Indicates button placement.



NOTCHES AND SYMBOLS: For matching seams and construction details.

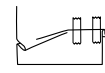
Indicates the Bustline, Waistline, Hip and/or Biceps. Measurements refer to circumference of Finished Garment (Body Measurement + Wearing Ease + Design Ease). Adjust pattern if necessary. The measurement excludes pleats, tucks, darts and seam allowances.

SEAM ALLOWANCE: 5/8" (1.5cm) included unless otherwise indicated, but not printed on tissue.

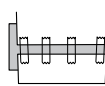
ADJUST IF NECESSARY

Lengthen or Shorten at adjustment lines (==) or where indicated on pattern. If substantial length is added, you may need to purchase additional fabric.

TO SHORTEN: Crease along adjustment line. Make a fold half the amount needed. Tape in place.



TO LENGTHEN: Slash between adjustment lines. Spread amount as needed, keeping edges parallel. Tape over paper.



When Alteration lines are not on tissue, lengthen or shorten at lower edge.

CUTTING AND MARKING

SHRINK FABRIC if not labeled pre-shrunk. Press.

CIRCLE LAYOUT for View, Size, Fabric Width.

Use **WITH NAP** layout for fabrics with one-way designs, nap, pile or surface shading. Because most knits have surface shading, a with nap layout is used.

For **DOUBLE THICKNESS (WITH FOLD)** - fold fabric with right sides together.

*** DOUBLE THICKNESS (WITHOUT FOLD)** - For fabrics with nap, fold fabric crosswise, right sides together. Mark as shown. Cut along crosswise fold of fabric (A). Turn upper layer 180° so arrows go in same direction and place over lower layer, right sides together (B).

For **SINGLE THICKNESS** - place fabric right side up. (For Fur Pile fabrics, place pile side down.)

★ Cut other pieces first, allowing enough fabric to cut this piece. Open fabric. For "Cut 1" pieces, cut piece once on single layer of fabric with piece face up on right side of fabric.

Pattern may have cutting lines for several sizes. Select the proper cutting line or pattern pieces for your size.

Before **CUTTING** place all pieces on fabric according to layout. Pin. (**Layouts show approximate position of pattern pieces; position may vary according to your pattern size.**) Cut **ACCURATELY**, cutting notches outward.

Before removing pattern, **TRANSFER MARKINGS** and lines of construction to Wrong Side of fabric, using the Pin and Chalk Pencil method or Tracing Paper and Dressmaker Wheel. Markings needed on right side of fabric should be thread traced.

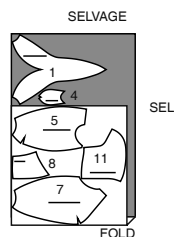
NOTE: Broken-line boxes (a! b! c!) in layouts represent pieces cut by measurements provided.

CUTTING LAYOUTS

RIGHT SIDE OF PATTERN	WRONG SIDE OF PATTERN	RIGHT SIDE OF FABRIC	WRONG SIDE OF FABRIC

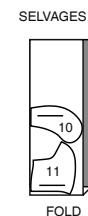
BEAR A (HEAD CENTER, CHIN, BODY, UPPER ARMS, INNER LEGS)

USE PIECES 1 4 5 7 8 11

45" (115CM)
WITH NAP

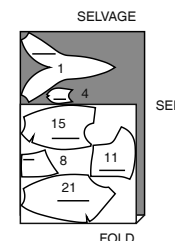
CONTRAST 3 A, B, C (INNER ARMS, OUTER LEGS)

USE PIECES 10 11

45" (115CM)
WITH NAP

BEAR C (HEAD CENTER, CHIN, BODY, UPPER ARMS, INNER LEGS)

USE PIECES 1 4 8 11 15 21

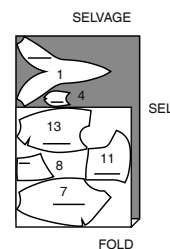
45" (115CM)
WITH NAP

HEART APPLIQUE A

CUT ONE OF PIECE 6 FROM EACH FABRIC AND PAPER-BACKED FUSIBLE WEB REMNANT.

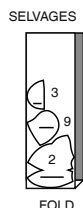
BEAR B (HEAD CENTER, CHIN, BODY, UPPER ARMS, INNER LEGS)

USE PIECES 1 4 7 8 11 13

45" (115CM)
WITH NAP

CONTRAST 1 A, B, C (HEAD SIDE, OUTER EARS, HANDS)

USE PIECES 2 3 9

45" (115CM)
WITH NAP

CONTRAST 2 A, B, C (INNER EARS, SOLES)

PIECES 3 12

45" (115CM)
WITH NAP

APPLIQUES B

HEARTS: CUT TWO OF PIECE 6 FROM REMNANT.

LEAVES: CUT ONE OF PIECE 14 FROM REMNANT.

PAPER-BACKED FUSIBLE WEB:

CUT TWO OF PIECE 6 AND ONE OF PIECE 14 FROM REMNANT.

APPLIQUES C

LARGE FLOWERS: CUT ONE OF PIECE 16 FROM REMNANT.
LARGE FLOWERS CENTERS: CUT ONE OF PIECE 17 FROM REMNANT.

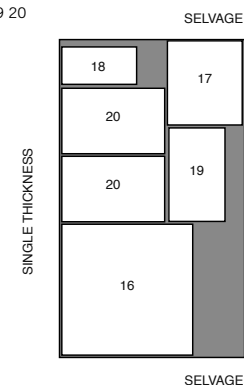
SMALL FLOWERS: CUT ONE OF PIECE 18 FROM REMNANT.
SMALL FLOWER CENTERS: CUT ONE OF PIECE 19 FROM REMNANT.

LEAVES: CUT ONE OF PIECE 20 FROM EACH OF TWO DIFFERENT COLOR REMNANTS.

PAPER-BACKED FUSIBLE WEB

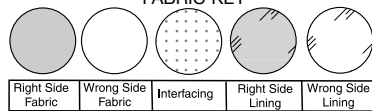
USE PIECES 16 17 18 19 20

17" (43CM)



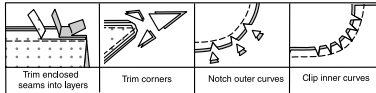
SEWING INFORMATION

FABRIC KEY



SEAM ALLOWANCES

Use 1/4" (6mm) seam allowances unless otherwise indicated.



PIN AND FIT

Pin or baste seams, RIGHT SIDE TOGETHER, matching notches. Fit garment before stitching major seams.

PRESS

Press seam allowances flat; then open unless otherwise stated. Clip where necessary so they lie flat.

GLOSSARY

Sewing methods in **BOLD TYPE** have Sewing Tutorial Video available. Scan QR CODE to watch videos:

EDGE STITCH – See Machine Stitches: “how to sew an edgestitch” video.

SLIPSTITCH – See Hand Stitching: “how to slip stitch” video.

TRIM SEAM – See Seams: “how to trim, clip and layer seams” video.

SEWING TUTORIALS



Build your skills viewing short, easy-to-follow videos at simplicity.com/sewingtutorials

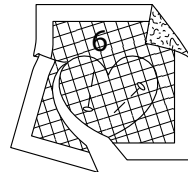
PATTERN PIECES WILL BE IDENTIFIED BY NUMBERS THE FIRST TIME THEY ARE USED.

STITCH 1/4" (6MM) SEAMS WITH RIGHT SIDES TOGETHER UNLESS OTHERWISE STATED.

PLUSH BEARS A, B, C

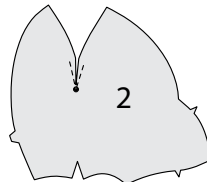
PREPARE APPLIQUÉS

1. FOR VIEW A – HEART APPLIQUÉ (6), (shown), or **FOR VIEW B** – HEART APPLIQUÉ (6) and LEAVES APPLIQUÉ (14), or **FOR VIEW C** – LARGE FLOWER APPLIQUÉ (16), LARGE FLOWER CENTER APPLIQUÉ (17), SMALL FLOWER APPLIQUÉ (18), SMALL FLOWER CENTER APPLIQUÉ (19), and LEAVES APPLIQUÉ (20), apply paper backed fusible web to **WRONG** side of appliqué fabric following manufacturer's directions. Cut appliqué tissue block along outer solid line. Pin pattern to **RIGHT** side of prepared fabric. Cut out each appliqué. Transfer markings to **RIGHT** side of appliqué using a washable fabric marking pen or pencil.



HEAD

2. To reinforce **HEAD SIDE** (2) at inner small dot of dart seam, stitch along seam line for about 1" (2.5cm) each side of small dot, stitching through dot, as shown. Slash at stitching at small dot.



3. With **RIGHT** sides together and raw edges even, pin **EAR** (3) sections to contrasting ear sections. Stitch curved edge, leaving marked edges open.

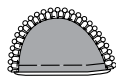
TRIM SEAM.



4. Turn ear; press. Baste raw edges together. On **OUTSIDE** of inner ear (contrast side), lap straight edge of trim just over finished edge of ear. **EDGE STITCH** close to inner edge of trim.



VIEW A



VIEW B

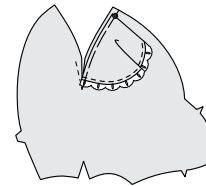


VIEW C

5. Fold ear along fold line with inner ear sides together. Baste lower edges together.

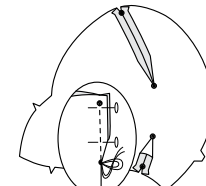


6. With **RIGHT** sides together, pin ear to head side along front dart seam edge, matching small dot with upper side front edge; baste.

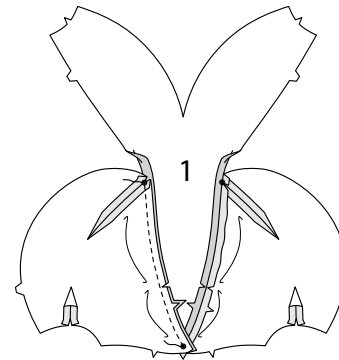


7. To stitch dart seams on head side, with **RIGHT** sides together, bring broken lines together carefully matching small dots. On **INSIDE**, place pins at **RIGHT** angles to the broken lines. Stitch the dart seam from outer edge to the point. Press the dart seams flat along the stitching to “blend” the stitches, then press darts open.

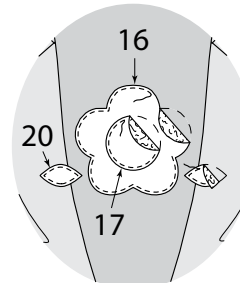
TIP - To prevent a “bubble” at the point, make the last few stitches right on the fold and leave the thread ends long enough to tie a knot. **DO NOT** back-stitch at the point.



8. To make front of head, with **RIGHT** sides together and raw edges even, pin **HEAD CENTER** (1) to head side, matching single notches. Stitch between the small dots from center front to small dot at ear, clipping seam to stitching as necessary to form the curve, and back-stitching at dots to reinforce the seam. Press seam open.



9. FOR VIEW C – On **OUTSIDE**, pin one large flower appliqué to head center between the broken lines. Fuse in place following manufacturer's directions. **EDGE STITCH** flower close to raw edges. Pin one large flower center appliqué to large flower between the broken lines. Fuse and **EDGE STITCH** in the same manner. Pin two leaves of leaves appliqué to each side of flower with inner end between broken lines. Fuse and **EDGE STITCH** in place.

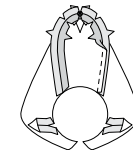


CONTINUE AS FOLLOWS FOR ALL VIEWS

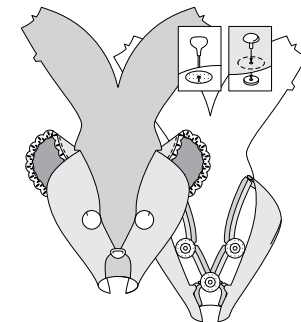
10. Stitch dart seam in **CHIN** (4) between the small dots. Press seam open.



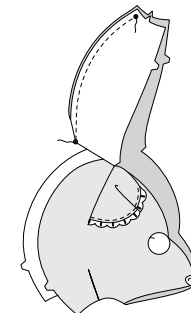
11. With **RIGHT** sides together and raw edges even, pin chin to head side, matching small dots and notches. Stitch, clipping seam allowance to stitching, as necessary. Press seam open.



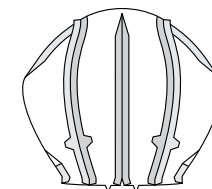
12. Cut three 1" (2.5cm) circles from fusible interfacing remnant. On **INSIDE**, fuse interfacing circles to head centered over inner small dots (for eyes) and center front dot (for nose). To attach each eye or nose, using a sharp pointed tool or an awl, poke a hole at small dots. Insert eye or nose shank through opening from the **OUTSIDE** and secure on **INSIDE** following manufacturer's instructions.



13. On **INSIDE**, stitch center back dart seam on head center between the small dots, back-stitching at small dots to reinforce the seam.

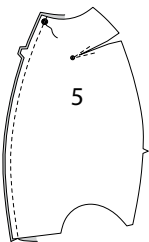


14. Pin remaining edges of head side to head center, matching double notches. Stitch, clipping seam allowance as necessary to form the curve. Press open. Turn head; press, pressing out ears.

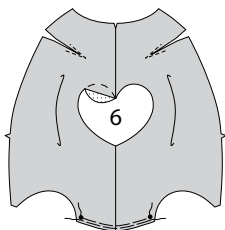


BODY FRONT A

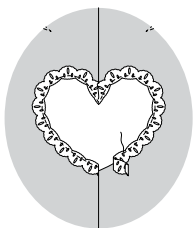
15. To reinforce BODY FRONT (5) at inner small dot of dart seam, stitch along seam line for about 1" (2.5cm) each side of small dot, stitching through dot, as shown. Slash to stitching at small dot. Stitch center front edges of body front from lower edge to large dot, back-stitching at dot to reinforce the seam.



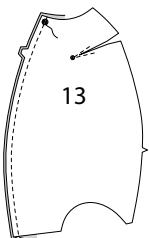
16. To gather lower edge of body front between the small dots, stitch along seamline, using a long machine stitch. Stitch again 1/8" (3mm) from first stitching within the seam allowance. ON OUTSIDE, pin heart appliqué to body front between the broken lines. Fuse in place following manufacturer's directions.



17. Lap straight edge of trim over raw edge of appliqué, folding out fullness at upper point, and turning under where edges meet at lower point. **EDGESTITCH** trim close to inner straight edge.

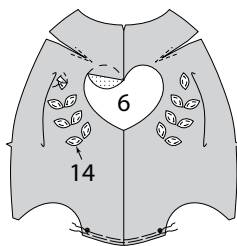
**BODY FRONT B**

18. To reinforce BODY FRONT (13) at inner small dot of dart seam, stitch along seam line for about 1" (2.5cm) each side of small dot, stitching through dot, as shown. Slash to stitching at small dot. Stitch center front edges of body front from lower edge to large dot, back-stitching at dot to reinforce the seam.

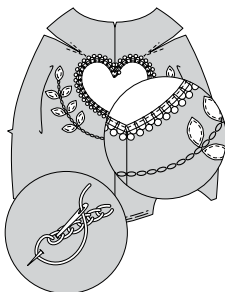


19. To gather lower edge of body front between the small dots, stitch along seamline, using a long machine stitch. Stitch again 1/8" (3mm) from first stitching within the seam allowance.

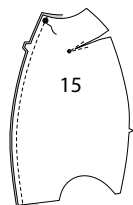
ON OUTSIDE, pin heart appliqué and leaves appliqué to body front between the broken lines. Fuse in place following manufacturer's directions. **EDGESTITCH** leaves close to raw edges.



20. Lap straight edge of trim over raw edge of appliqué, lapping where edges meet at upper point. **EDGESTITCH** trim close to inner straight edge. Thread a needle with six strands of embroidery floss. To make a chain stitch along transferred, solid line, bring needle to RIGHT side of fabric at one end of line. Make a small loop with the thread and hold it in place with your left thumb. Insert the needle back close to where the thread first came up. Bring the needle out a little to the left, over the thread loop.

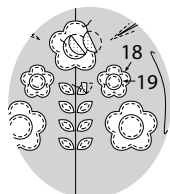
**BODY FRONT C**

21. To reinforce BODY FRONT (15) at inner small dot of dart seam, stitch along seam line for about 1" (2.5cm) each side of small dot, stitching through dot, as shown. Slash to stitching at small dot. Stitch center front edges of body front from lower edge to large dot, back-stitching at dot to reinforce the seam.

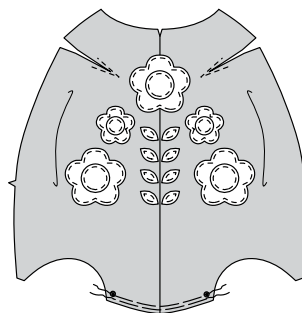


22. Pin three large flower appliqués and two small flower appliqués to body front between the broken lines. Fuse in place following manufacturer's directions. **EDGESTITCH** flowers close to raw edges. Pin three large flower center appliqués to large flowers between the broken lines and two small flower centers to small flowers between the broken lines. Fuse and **EDGESTITCH** in the same manner.

Pin six leaves of leaves appliqué between broken lines. Fuse and **EDGESTITCH** in place.



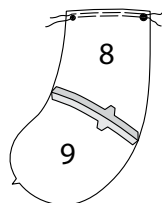
23. To gather lower edge of body front between the small dots, stitch along seamline, using a long machine stitch. Stitch again 1/8" (3mm) from first stitching within the seam allowance.

**ARMS**

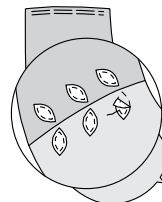
NOTE: To stuff arms and body when directed, pull fiberfill apart and fluff it, breaking apart lumps and thick spots. Use pieces about the size of a golf ball. Pack into place using the end of a long handled wooden spoon or chopstick. Pack firmly in place each time stuffing is added. Use both hands to mold and shape, being careful not to over stuff or make lopsided.

24. With RIGHT sides together and raw edges even, pin upper edge of HAND (9) to lower edge of UPPER ARM (8), matching notches. Stitch. Press seam open.

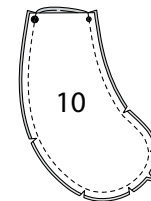
To gather upper edge of upper arm between the small and large dots, stitch along seamline, using a long machine stitch. Stitch again 1/8" (3mm) from first stitching within the seam allowance.



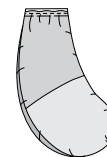
25. FOR VIEW C – Pin six leaves of leaves appliqué between broken lines on each arm. Fuse and **EDGESTITCH** in place.



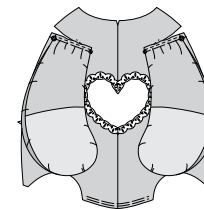
26. FOR ALL VIEWS – With RIGHT sides together and raw edges even, pin INNER ARM (10) to upper arm and hand, matching small dots, large dots, and notches. Stitch, leaving straight edge open. **TRIM SEAM.**



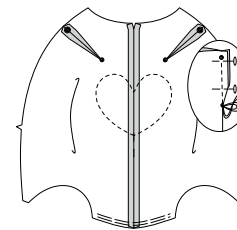
27. Turn arm; press. Stuff arm with fiberfill to 1/2" (1.3cm) below straight edges. Pull up gathering stitches on upper arm to fit inner arm. Baste.



28. On OUTSIDE, pin arm to body along lower dart seam edge, matching small and large dots. Baste.



29. Make dart seam in body front. Press open.

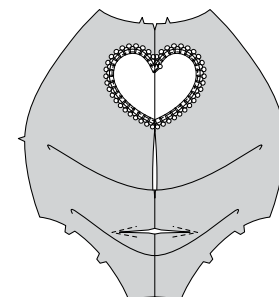
**BODY BACK A, B**

30. To reinforce BODY BACK (7) at inner small dot of dart seam, stitch along seam line for about 1" (2.5cm) each side of small dot, stitching through dot, as shown. Slash to stitching at small dot.

Stitch center back edges of body back from upper small dot, leaving an opening between the notches for turning, back-stitching to reinforce. Press seam open.

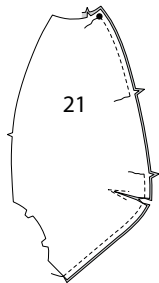


31. FOR VIEW B – On OUTSIDE, apply heart appliqué to body back and trim in the same manner as body front.

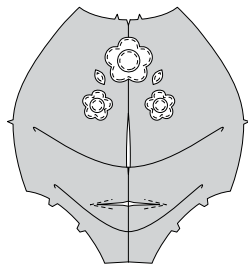


BODY BACK C

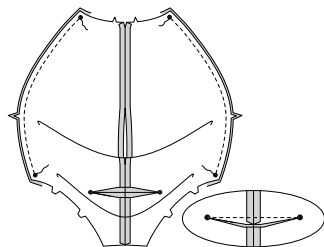
32. To reinforce BODY BACK (21) at inner small dot of dart seam, stitch along seam line for about 1" (2.5cm) each side of small dot, stitching through dot, as shown. Slash to stitching at small dot. Stitch center back edges of body back from upper small dot, leaving an opening between the notches for turning, back-stitching to reinforce. Press seam open.



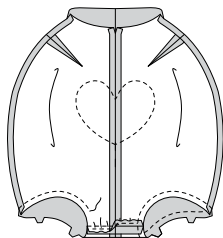
33. On OUTSIDE, apply large flower, small flowers, and leaves appliques to body back in the same manner as body front.

**CONTINUE AS FOLLOWS FOR ALL VIEWS**

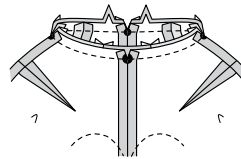
34. On INSIDE, stitch dart seam in back. With RIGHT sides together and raw edges even, pin body front to body back at side edges. Stitch between the small dots, back-stitching at dots to reinforce the seam. **TRIM SEAM.** Press seam open.



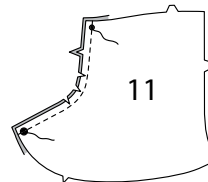
35. Pin body front to body back at lower edge, matching centers, pulling up gathering stitches to fit. Stitch. Press seam open. Machine-stitch along seamlines on leg openings.



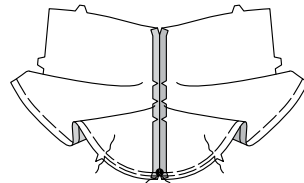
36. With RIGHT sides together and raw edges even, pin head to body, matching centers, small and large dots. Stitch. **TRIM SEAM.**

**LEGS**

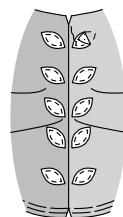
37. To make each leg, with RIGHT sides together and raw edges even, pin two LEG (11) sections along single notched, front edge. Stitch front edge between the small and large dots, back-stitching at dots to reinforce the seam. Clip front edge to stitching along curves. Press seam open.



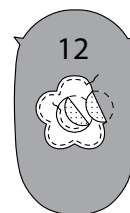
38. On OUTSIDE, machine-baste along lower edge of leg, breaking stitching at the notch. To gather lower edge of leg between large dot and notch, stitch again 1/8" (3mm) from first stitching within the seam allowance.



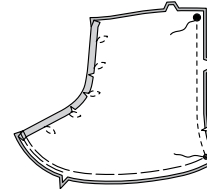
39. FOR VIEW C – On OUTSIDE, pin ten leaves of leaves appliqué to leg between the broken lines. Fuse in place following manufacturer's directions. **EDGE STITCH** leaves close to raw edges.



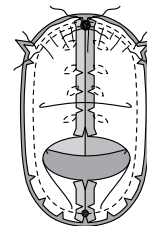
40. On OUTSIDE for each SOLE (12), pin one large flower appliqué between the broken lines. Fuse in place following manufacturer's directions. **EDGE STITCH** flower close to raw edges. Pin one large flower center appliqué to large flower between the broken lines. Fuse and **EDGE STITCH** in place in the same manner as leaves.

**CONTINUE AS FOLLOWS FOR ALL VIEWS**

41. With RIGHT sides together and raw edges even, pin double notched back edges of leg together. Stitch between the large and small dots, back-stitching at dots to reinforce the seam. Clip curves.

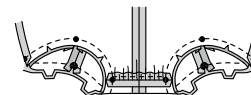


42. With RIGHT sides together and raw edges even, pin SOLE (12) to lower edge of leg, matching small dots, large dots, and notches, pulling up gathering stitches to fit, clipping lower edge to basting as necessary. Stitch.

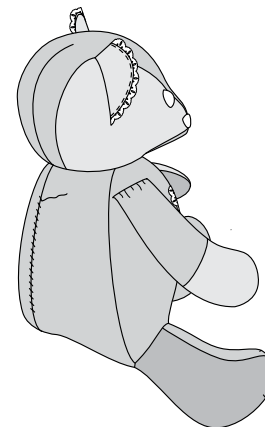


43. Turn leg; press.

With RIGHT sides together and raw edges even, pin legs to body, matching small dots, large dots, and notches, clipping body leg opening to stitching as necessary. Stitch. **TRIM SEAM.** Press seam open.

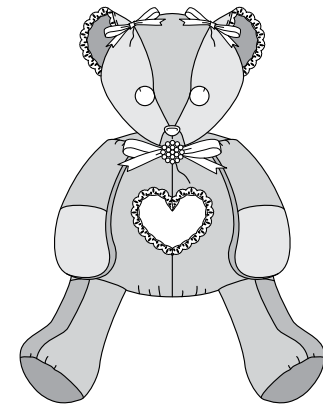


44. Turn bear RIGHT side out. Stuff with fiberfill through opening in back. **SLIPSTITCH** opening closed.

**FINISHING A**

45. Cut two pieces of 3/8" (1cm) ribbon, 10 - 1/2" (27cm) long. Tie each ribbon into a bow at center, chevron trim ends. Tack center of a bow to each ear along lower edge of fold.

Cut a pieces of 5/8" (1.5cm) ribbon, 31" (79cm) long. Wrap ribbon around neck of bear and tie into a bow at center, chevron trim ends. Tack or glue a decorative shank button over bow knot.

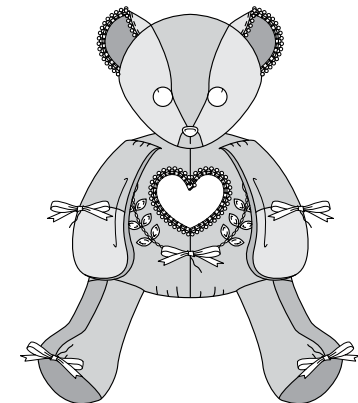
**FINISHING B**

46. Cut five pieces of 3/8" (1cm) ribbon, 10 - 1/2" (27cm) long. Tie each ribbon into a bow at center, chevron trim ends.

Tack center of one bow to each leg along center front seam at the large dot.

Tack center of one bow to each hand/upper arm seam at the small dot.

Tack center of one bow to center front seam at the small dot over chain stitching.





Congrats!

You've completed your sewing adventure

SHARE YOUR LOOK



Post your pattern and tag us using [#simplicitypatterns](#)
[@simplicity_creative_group](#)
[@simplicitymccallsuk](#)
[@simplicitymccallsaustralia](#)
for a chance to be featured on our social media.

Look for more PDF patterns at [simplicity.com](#) or for customers outside the U.S. and Canada visit [sewdirect.com](#) and [sewdirect.com.au](#)

Have a question or need help with your sewing project contact us:
[Simplicity.com](#) [Sewdirect.com](#) [Sewdirect.com.au](#)

McCall's
by **design**_{group}

McCall's ©2025 a division of IG Design Group Americas Inc. • Atlanta, GA 30342 USA [www.thedesigngroup.com](#) • All Rights Reserved. [www.mccall.com](#) • Made in the U.S.A. Fabriqué aux États-Unis.
To be used for individual private home use only and not for commercial or manufacturing purposes. • A usage privé seulement et non à des fins commerciales ou de production en série. • Para uso privado solamente, no se puede utilizar con propósitos de comercialización o de producción en serie.