

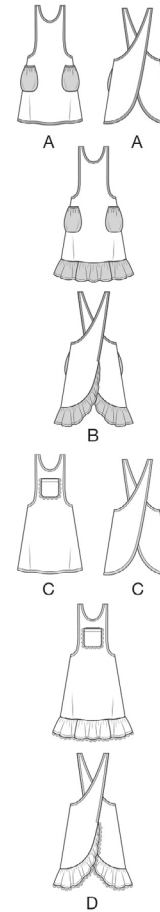
McCall's®

M8598



Designed and
printed in USA

Easy
Facile



MISSES' APRONS

Suggested Fabrics: Broadcloth, Chambray, Chintz, Cotton Types, Gingham, Lightweight Denim, Linen Types, Poplin. **A,B** Contrast 1 also in Velvet.

Notions: **A,B,C,D:** One pkg. of ½" (1.3cm) double fold bias tape (optional). **A,B:** ½ yd. (0.5m) of ¾" (1cm) elastic. **C,D:** 1¼" - 1½" (3cm - 4cm) flexible or ruffled lace trim: ¾ yd. (0.8m) for **C**, 4 yds. (3.7m) for **D**.

Sizes	XS (4-6)	S (8-10)	M (12-14)	L (16-18)	XL (20-22)	
Apron A	45"» 60"»	2¼" 1¾"	2¼" 1¾"	2¼" 1¾"	2¼" 1¾"	Yds. "
Contrast 1 (Pockets) - 45, 60"» - ½ yd.						
Contrast 2 (Binding) - 45, 60"» - 1¼ yds.						
Apron B	45"» 60"»	2¼" 1¾"	2¼" 1¾"	2¼" 1¾"	2¼" 1¾"	Yds. "
Contrast 1 (Pockets, Ruffles)						
Contrast 2 (Binding) - 45, 60"» - 1¼ yds.						
Apron C	45"» 60"»	2¼" 1¾"	2¼" 1¾"	2¼" 1¾"	2¼" 1¾"	Yds. "
Contrast (Binding) - 45, 60"» - 1¼ yds.						
Apron D	45"» 60"»	3¼" 2"	3¼" 2"	3¼" 2"	3¼" 2"	Yds. "
Contrast (Binding) - 45, 60"» - 1¼ yds.						

TABLIERS POUR JEUNES FEMMES

Tissus Conseillés: Broadcloth, Chambray, Chintz, Types Coton, Vichy, Denim Léger, Types toile de lin, Popeline. **A,B** **Contraste 1** aussi en Velours.

Notions: **A,B,C,D:** 1 paquet ruban de biais double de 1.3cm (facultatif). **A,B:** 0.5m d' élastique de 1cm. **C,D:** Bordure souple ou bordure en dentelle à volants de 3cm - 4cm: 0.8m pour **C**, 3.7m pour **D**.

Tailles Françaises	TP	P	M	G	TG	
	32-34 30-32	36-38 34-36	40-42 38-40	44-46 42-44	48-50 46-48	
Tablier A	115cm* 150cm*	2.1 1.6	2.1 1.6	2.3 1.6	2.4 1.7	m "
Contraste 1 (Poches) - 115, 150cm* - 0.3m						
Contraste 2 (Bordure) - 115, 150cm* - 1.5m						
Tablier B	115cm* 150cm*	2.1 1.6	2.2 1.7	2.3 1.7	2.5 1.7	m "
Contraste 1 (Poches)						
Contraste 2 (Bordure) - 115, 150cm* - 1.3m						
Tablier C	115cm* 150cm*	2.1 1.6	2.2 1.6	2.3 1.6	2.5 1.7	m "
Contraste (Bordure) - 115, 150cm* - 1.5m						
Tablier D	115cm* 150cm*	2.9 1.8	2.9 1.8	3.0 1.9	3.2 2.7	m "
Contraste (Bordure) - 115, 150cm* - 1.3m						

*with nap **without nap

*ave c sens **sans sens

Shop all the pattern brands you love @

Simplicity®.com

For customers outside of the U.S. and Canada

sewdirect.com

sewdirect.com.au

BODY MEASUREMENTS					
Sizes	XS	S	M	L	XL
Bust	34-36	36-38	38-40	40-42	42-44
Waist	28-30	30-32	32-34	34-36	36-38
Hip	34-36	36-38	38-40	40-42	42-44
Back Waist Length	28-30	30-32	32-34	34-36	36-38

MEASURES NORMALISÉES					
Tailles	XS	S	M	L	XL
Poitrine	86-88	88-90	90-92	92-94	94-96
Taille	66-68	68-70	70-72	72-74	74-76
Hanches	86-88	88-90	90-92	92-94	94-96
Longueur Dos	39-41	41-43	43-45	45-47	47-49

McCall's
by design

McCall's ©2025 a division of IG Design Group Americas Inc. • Atlanta, GA 30342 USA www.thedesigngroup.com • All Rights Reserved. www.mccall.com • Made in the U.S.A. Fabriqué aux États-Unis.

To be used for individual private home use only and not for commercial or manufacturing purposes. • A usage privé seulement et non à des fins commerciales ou de production en série. • Para uso privado solamente, no se puede utilizar con propósitos de comercialización o de producción en serie.

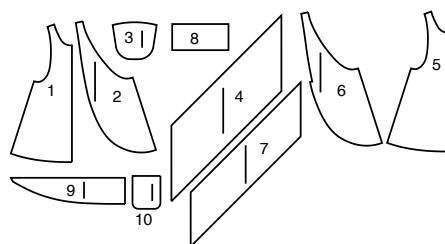
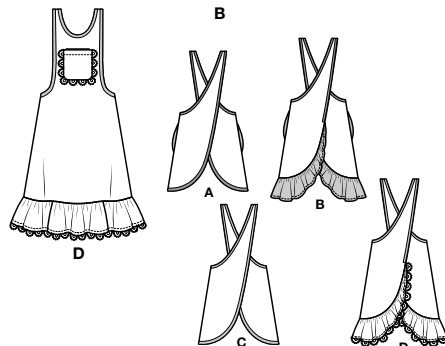
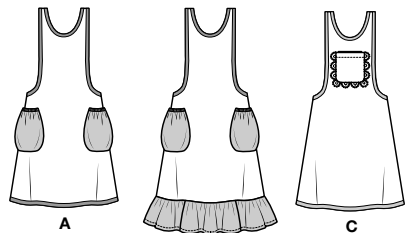
M8598

Page 1 of 3

McCall's®

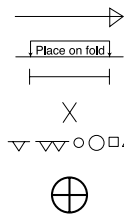
English

1-800-782-0323



- 1 Front-A,C
2 Back-A,C
3 Pocket-A,B
4 Binding-A,C
5 Front-B,D
6 Back-B,D
7 Binding-B,D
8 Ruffle-B,D
9 Back Ruffle-B,D
10 Pocket-C,D

PATTERN MARKINGS



GRAINLINE: Place on straight grain of fabric, parallel to selvage or fold.

FOLDLINE: Place line on fold of fabric.

BUTTONHOLE MARKING: Indicates exact length and placement of buttonholes.

BUTTON MARKING: Indicates button placement.

NOTCHES AND SYMBOLS: For matching seams and construction details.

Indicates the Bustline, Waistline, Hip and/or Biceps. Measurements refer to circumference of Finished Garment (Body Measurement + Wearing Ease + Design Ease). Adjust pattern if necessary. The measurement excludes pleats, tucks, darts and seam allowances.

SEAM ALLOWANCE: 5/8" (1.5cm) included unless otherwise indicated, but not printed on tissue.

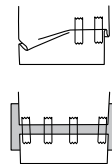
ADJUST IF NECESSARY

Lengthen or Shorten at adjustment lines (==) or where indicated on pattern. If substantial length is added, you may need to purchase additional fabric.

TO SHORTEN: Crease along adjustment line. Make a fold half the amount needed. Tape in place.

TO LENGTHEN: Slash between adjustment lines. Spread amount as needed, keeping edges parallel. Tape over paper.

When Alteration lines are not on tissue, lengthen or shorten at lower edge.



CUTTING AND MARKING

SHRINK FABRIC if not labeled pre-shrunk. Press.

CIRCLE LAYOUT for View, Size, Fabric Width.

Use **WITH NAP** layout for fabrics with one-way designs, nap, pile or surface shading. Because most knits have surface shading, a with nap layout is used.

For **DOUBLE THICKNESS (WITH FOLD)** - fold fabric with right sides together.

*** DOUBLE THICKNESS (WITHOUT FOLD)** - For fabrics with nap, fold fabric crosswise, right sides together. Mark as shown. Cut along crosswise fold of fabric (A). Turn upper layer 180° so arrows go in same direction and place over lower layer, right sides together (B).

For **SINGLE THICKNESS** - place fabric right side up. (For Fur Pile fabrics, place pile side down.)

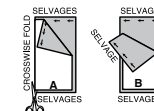
★ Cut other pieces first, allowing enough fabric to cut this piece. Open fabric. For "Cut 1" pieces, cut piece once on single layer of fabric with piece face up on right side of fabric.

Pattern may have cutting lines for several sizes. Select the proper cutting line or pattern pieces for your size.

Before **CUTTING** place all pieces on fabric according to layout. Pin. (**Layouts show approximate position of pattern pieces; position may vary according to your pattern size.**) Cut **ACCURATELY**, cutting notches outward.

Before removing pattern, **TRANSFER MARKINGS** and lines of construction to Wrong Side of fabric, using the Pin and Chalk Pencil method or Tracing Paper and Dressmaker Wheel. Markings needed on right side of fabric should be thread traced.

NOTE: Broken-line boxes (a1 b1 c1) in layouts represent pieces cut by measurements provided.



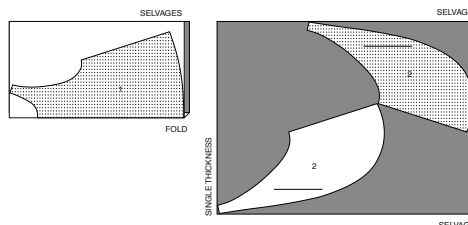
CUTTING LAYOUTS

RIGHT SIDE OF PATTERN	WRONG SIDE OF PATTERN	RIGHT SIDE OF FABRIC	WRONG SIDE OF FABRIC

APRON A

USE PIECES 1 2

45" (115CM)
WITH NAP
ALL SIZES



CONTRAST 2A OR CONTRAST C (BINDING)

USE PIECE 4

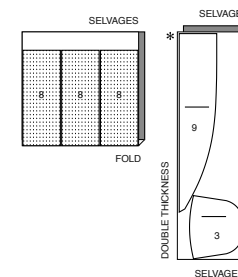
45"/60" (115CM/150CM)
WITH NAP
ALL SIZES



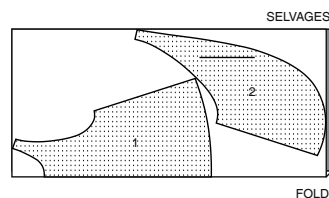
CONTRAST 1B (POCKETS, RUFFLE)

USE PIECES 3 8 9

45" (115CM)
WITH NAP
ALL SIZES



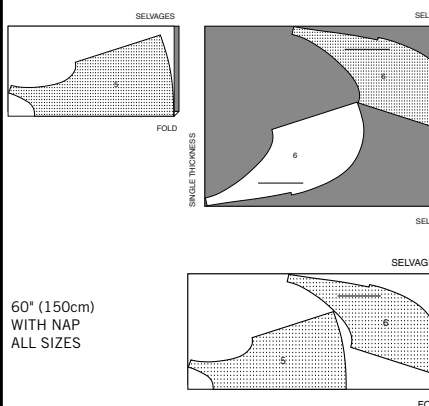
60" (150CM)
WITH NAP
ALL SIZES



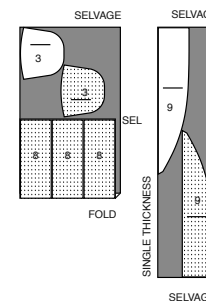
APRON B

USE PIECES 5 6

45" (115CM)
WITH NAP
ALL SIZES



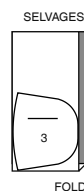
60" (150CM)
WITH NAP
ALL SIZES



CONTRAST 1A (POCKETS)

USE PIECE 3

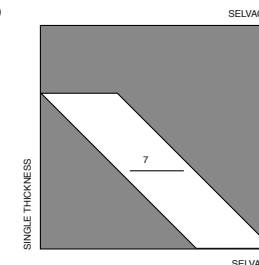
45"/60" (115CM/150CM)
WITH NAP
ALL SIZES



CONTRAST 2B OR CONTRAST D (BINDING)

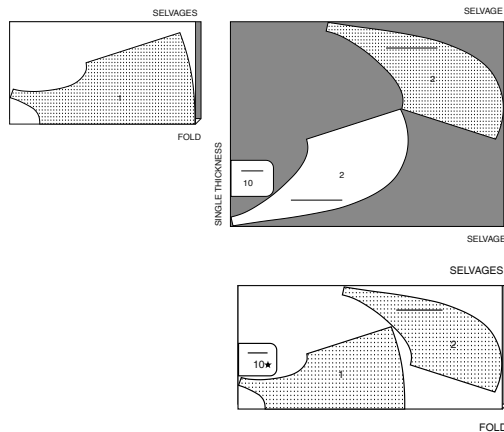
USE PIECE 7

45"/60" (115CM/150CM)
WITH NAP
ALL SIZES

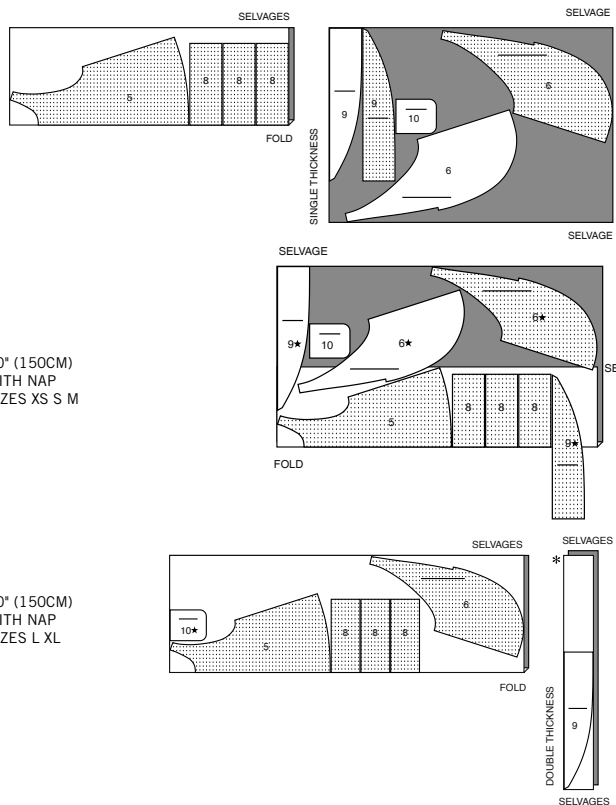
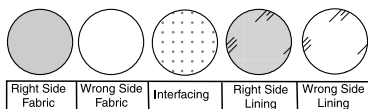


APRON C

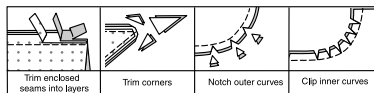
USE PIECES 1 2 10

45" (115CM)
WITH NAP
ALL SIZES60" (150CM)
WITH NAP
ALL SIZES**APRON D**

USE PIECES 5 6 8 9 10

45" (115CM)
WITH NAP
ALL SIZES60" (150CM)
WITH NAP
SIZES XS S M60" (150CM)
WITH NAP
SIZES L XL**SEWING INFORMATION****FABRIC KEY****SEAM ALLOWANCES**

Use 5/8" (1.5cm) seam allowances unless otherwise indicated.

**PIN AND FIT**

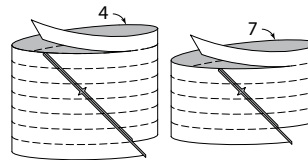
Pin or baste seams, RIGHT SIDE TOGETHER, matching notches. Fit garment before stitching major seams.

PRESS

Press seam allowances flat; then open unless otherwise stated. Clip where necessary so they lie flat.

GLOSSARYSewing methods in **BOLD TYPE** have Sewing Tutorial Video available. Scan QR CODE to watch videos:**GATHER** – See Gathering: “sewing two row gathers” video.**EDGESTITCH** – See Machine Stitches: “how to sew an edgestitch” video.**NARROW HEM** – See Hems: “sewing narrow hems” “how to sew sewing narrow hems” video.**SEWING TUTORIALS**Build your skills viewing short, easy-to-follow videos at simplicity.com/sewingtutorials**PATTERN PIECES WILL BE IDENTIFIED BY NUMBERS THE FIRST TIME THEY ARE USED.****STITCH 5/8" (1.5CM) SEAMS WITH RIGHT SIDES TOGETHER UNLESS OTHERWISE STATED.****APRON A, B, C, D****BINDING****NOTE:** If you prefer, purchased 1/2" (1.3cm) double-fold bias tape may be used in place of fabric binding.

1. To make fabric binding, with **RIGHT** sides together, fold the block **BINDING** (4) for Views A and C or **BINDING** (7) for Views B and D into a tube. Match the lines and notches so that one width of binding extends beyond the top and bottom end, as shown. Stitch in a 1/4" (6mm) seam and press open. Cut along bottom of strip and continue cutting in a spiral until the end of the line. This creates one continuous strip of bias.



2. To create double fold bias binding from your strip, with **WRONG** sides together fold the strip lengthwise so that both long edges are 1/8" (3mm) apart, as shown. Press the fold edge, setting in a crease.



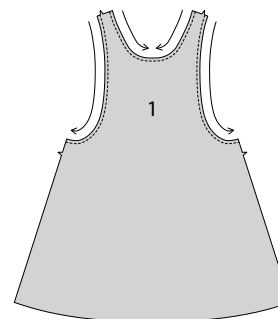
3. Open out the fold and turn both long edges to **WRONG** side so that they just meet the crease, press.



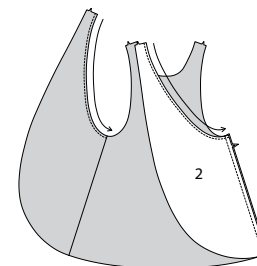
4. Fold the strip along the crease encasing the turned edges. Trim ends so that they are straight, as shown. Notice that one edge is wider than the other. The wider side is to be used on the **INSIDE** so that when the binding is stitched in place from the **OUTSIDE**, both edges are sure to be caught in the stitching.

**FRONT AND BACK A, C**

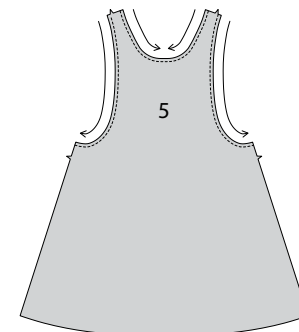
5. To staystitch neck and armhole edges of **FRONT** (1), stitch 3/8" (1cm) from cut edge in direction of arrows. This stitching stays in permanently to prevent stretching on curved edges. (Shown only in the first illustration.)



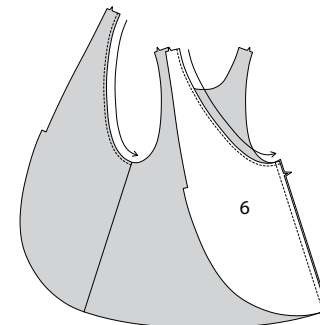
6. Staystitch upper edge of **BACK** (2) in the same manner. Stitch front to back at side edges.

**FRONT AND BACK B, D**

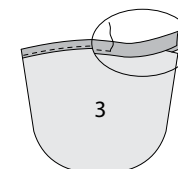
7. To staystitch neck and armhole edges of **FRONT** (5), stitch 3/8" (1cm) from cut edge in direction of arrows. This stitching stays in permanently to prevent stretching on curved edges. (Shown only in the first illustration.)



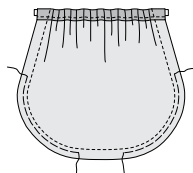
8. Staystitch upper edge of **BACK** (6) in the same manner. Stitch front to back at side edges.

**POCKET A, B**

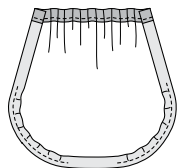
9. Encase upper edge of **POCKET** (3) in binding.



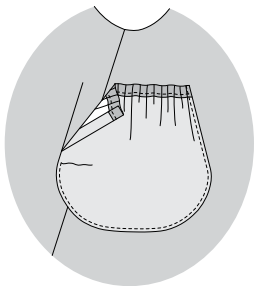
10. Cut a piece of 3/8" (1cm) wide elastic, 7-3/4" (19.5cm) long. Thread elastic through binding, bringing ends even. Stitch along 5/8" (1.5cm) seamline on side and lower edges, catching in ends of elastic.
To ease curved edge of pocket, stitch 1/4" (6mm) **INSIDE** the seam line, using a long machine-stitch.



11. Turn under side and lower edge of pocket along stitching, pulling up ease stitches to form the curve.

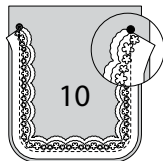


12. On **OUTSIDE**, pin pockets to front along pocket line. **EDGE STITCH** close to side and lower edges.

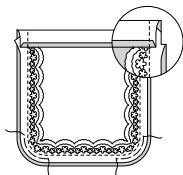


POCKET C, D

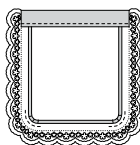
13. With **RIGHT** sides together, pin lace trim to **POCKET (10)** with straight edge of lace even with raw edge, and having ends tapered or folded under at large dots. Stitch lace in place along seamline.



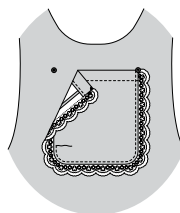
14. Press under 1/4" (6mm) on upper edge of pocket. Turn upper edge to **OUTSIDE** along fold line, forming facing. Stitch along seam line on raw edges. To ease curved edge of pocket, stitch 1/4" (6mm) **INSIDE** the seam line, using a long machine-stitch. Trim seam allowance in the facing area to 1/4" (6mm).



15. Turn corners **RIGHT** side out, turning facing to the **WRONG** side; press, pressing under raw edges along stitching and pressing out trim, pulling up ease stitches to form the curve. Stitch facing close to inner edge.

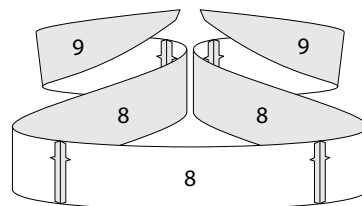


16. On **OUTSIDE**, pin pocket to front matching large dots. Stitch close to side and lower edges.

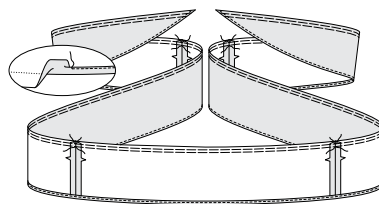


RUFFLE B, D

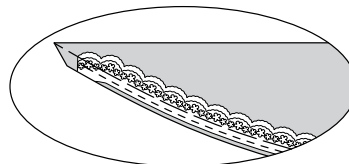
17. Pin three **RUFFLE (8)** sections together at ends, and one **BACK RUFFLE (9)** section to each remaining end of ruffle.



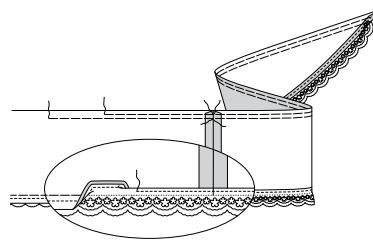
18. FOR VIEW B– Press under 5/8" (1.5cm) hem allowance. To form a **NARROW HEM**, tuck under raw edge to meet crease. Press. **EDGE STITCH** close to inner pressed edge.
GATHER upper edge of ruffle, breaking stitching at seams.



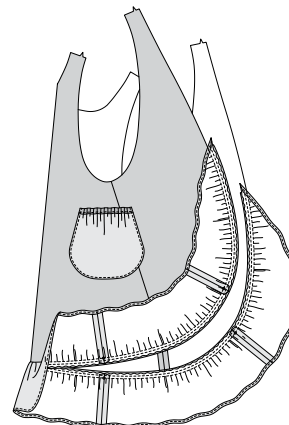
19. FOR VIEW D – With **RIGHT** sides together, pin flexible or ruffled lace trim to ruffle with straight edge of trim even with the lower raw edge, tapering ends into seam allowance. Machine-baste along 5/8" (1.5cm) hemline. Stitch 1/4" (6mm) from first stitching within the hem allowance. Cut ends of trim even with raw edge of hem.



20. Press under 5/8" (1.5cm) hem allowance along basting, pressing out trim. To form a **NARROW HEM**, tuck under raw edge to meet crease. Press. **EDGE STITCH** close to inner pressed edge. Remove basting.
GATHER upper edge of ruffle, breaking stitching at seams.

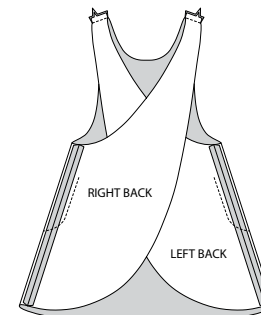


21. FOR VIEW B and D – With **RIGHT** sides together and raw edges even, pin ruffle to lower and back edges of apron, matching centers, placing seams at small dots, pulling up gathering stitches to fit. Distribute gathers evenly. Stitch along seamline. Press seam to **INSIDE** along stitching, pressing ruffle out.



CONTINUE AS FOLLOWS FOR ALL VIEWS

22. On **INSIDE**, lap **RIGHT** back over **LEFT** back, matching centers. Stitch front to back at shoulder edges.



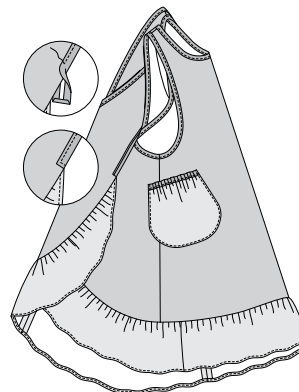
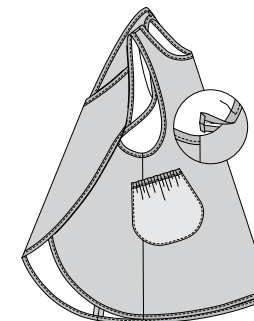
23. To encase raw edges of apron in binding, slip raw edges between the folds of binding, placing raw edge against the center crease and the wider folded edge of binding on the **INSIDE** of apron. Stitch tape in place from the **OUTSIDE**, catching in pressed inner edge on the **INSIDE**.

FOR VIEW A, C – The edge can be encased in one continuous loop, having ends turn under and meet at one underarm seam.

FOR VIEW B, D – The edge can be encased in one continuous loop with ends turned under and squared at the ruffle.

TIP – When binding is applied to a curved edge, pre-shape it with a steam iron, by stretching the double edges and pressing for an inward curve, or by stretching the single fold edge and pressing for an outward curve.

Turn tape ends under to finish an edge or enclose a seam.





Congrats!

You've completed your sewing adventure

SHARE YOUR LOOK



Post your pattern and tag us using [#simplicitypatterns](#)
[@simplicity_creative_group](#)
[@simplicitymccallsuk](#)
[@simplicitymccallsaustralia](#)
for a chance to be featured on our social media.

Look for more PDF patterns at [simplicity.com](#) or for customers outside the U.S. and Canada visit [sewdirect.com](#) and [sewdirect.com.au](#)

Have a question or need help with your sewing project contact us:
[Simplicity.com](#) [Sewdirect.com](#) [Sewdirect.com.au](#)

McCall's
by **design**_{group}

McCall's ©2025 a division of IG Design Group Americas Inc. • Atlanta, GA 30342 USA [www.thedesigngroup.com](#) • All Rights Reserved. [www.mccall.com](#) • Made in the U.S.A. Fabriqué aux États-Unis.
To be used for individual private home use only and not for commercial or manufacturing purposes. • A usage privé seulement et non à des fins commerciales ou de production en série. • Para uso privado solamente, no se puede utilizar con propósitos de comercialización o de producción en serie.