

McCall's

M8595



VINTAGE 80's

A



B

LAURA ASHLEY
SINCE 1953

Manufactured and distributed by IG Design Group Americas Inc. under license from Laura Ashley, Inc. © & © 2025 Laura Ashley Brands. All rights reserved.

Create your own designer garment with this McCall's licensed sewing pattern.
Créez votre propre vêtement haute couture avec ce patron de couture sous licence McCall's.



Designed and printed in USA

Average

MISSES' GOWN, SLIP AND SASH

Suggested Fabrics: Gown and Sash A or B: Dotted Swiss, Handkerchief Linen, Lightweight Cotton, Lightweight Linen, Lightweight Muslin, Point d'Esprit, Voile. **Slip:** Batiste, Lightweight Cotton, Voile. **Gown and Slip:** Not suitable for diagonals, checks, stripes or plaids. **Interfacing:** Lightweight Fusible or non-fusible.

Notions: Gown A or B: One 24" (61cm) zipper, one hook, 1½" (4cm) double-edged flat lace: 12¾ yds. (11.8m) for Gown A, 12½ yds. (11.1m) for Gown B. **Also for Gown A:** Four ¾" (1cm) buttons. **Also for Gown B:** Two ½" (1.3cm) buttons. **Slip:** One 16" (41cm) zipper, one hook, 3¾ yds. (3.8m) of ½" (1.3cm) wide edging.

Sizes	6	8	10	12	14	16
European	32	34	36	38	40	42

BODY MEASUREMENTS: Select pattern size based on body measurements

Bust	30½	31½	32½	34	36	38	Ins.
Waist	23	24	25	26½	28	30	"
Hip-9" below waist	32½	33½	34½	36	38	40	"
Back-neck to waist	15½	15¾	16	16¼	16½	16¾	"

View A Gown and Sash

45***	5¾	5¾	5¾	6	6¼	6½	Yds.
60***	4¾	4¾	4¾	4¾	4¾	4¾	"

Interfacing A,B 20" - 1 yd.

View B Gown and Sash

45***	5½	5½	5½	5¾	5¾	5¾	Yds.
60***	4¾	4¾	4¾	4¾	4½	4½	"

Slip 45*** 4 4 4 4 4¾ 4¾ 4¾ Yds.

FINISHED GARMENT MEASUREMENTS (Includes Design and Wearing Ease)

View A,B Bust (Gown)	34	35	36	37½	39½	41½	Ins.
Bust (Slip)	32½	33½	34½	36	38	40	"
Waist (Slip)	25	26	27	28½	30½	32½	"
Finished back length from base of neck							
View A,B Gown	57½	57¾	58	58¼	58½	58¾	Ins.
Slip	56½	56¾	57	57¼	57½	57¾	"

*with nap **without nap

Moins Facile

ROBE, COMBINAISON ET CEINTURE-ÉCHARPE POUR JEUNES FEMMES

Tissus Conseillés: Robe et ceinture-écharpe A ou B : Plumetis, Batiste de lin, Coton léger, Toile de lin léger, Mousseline légère, Point d'esprit, Voile. **Combinaison:** Batiste, Coton léger, Voile. **Robe et combinaison:** Ne pas convenable pour les tissus en diagonale, à carreaux, à rayures, ou pour tissus écossais. **Entoilage:** thermocollant ou non thermocollant léger.

Mercurie: Robe A ou B : 1 fermeture à glissière de 61 cm, 1 agrafe, dentelle plate à double bord de 4 cm : 11.8m pour la Robe A, 11.1m pour la Robe B. **Aussi pour la Robe A:** 4 boutons de 1 cm. **Aussi pour la Robe B:** 2 boutons de 1.3 cm. **Combinaison:** 1 fermeture à glissière de 41 cm, 1 agrafe, 3.8m de bordure de 1.3 cm de large.

Tailles	6	8	10	12	14	16
Françaises	34	36	38	40	42	44
Européen	32	34	36	38	40	42

MESURES DU CORPS: Choisissez la taille du patron basée sur les mesures du corps

Poitrine	78	80	83	87	92	97	cm
Taille	58	61	64	67	71	76	"
Hanches (23cm au-dessous de la taille)							
	83	85	88	92	97	102	cm
Dos du cou à la taille	39.5	40	40.5	41.5	42	42.5	"

Modèle A Robe et ceinture-écharpe

115cm**	5.3	5.3	5.4	5.4	5.7	5.9	m
150cm**	4.2	4.2	4.3	4.3	4.3	4.3	"

Entoilage A,B 51cm - 0.9m.

Modèle B Robe et ceinture-écharpe

115cm**	5.0	5.0	5.1	5.3	5.3	5.4	m
150cm**	3.9	3.9	4.0	4.0	4.1	4.1	"

Combinaison 115cm** 3.6 3.7 3.7 3.7 3.7 3.8 m

MESURES DES VÊTEMENTS FINI (Motif et aisance de port compris)

Modèle A,B Poitrine (Robe)	86	89	91	95	100	105	cm
Poitrine (Combinaison)	83	85	88	91	97	102	"
Taille (Combinaison)	64	66	69	72	77	83	"
Longueur finie - dos, votre nuque à l'ourlet							
Modèle A,B Robe	146	147	147	148	149	149	cm
Combinaison	144	144	145	145	146	147	"

*avec sens **sans sens



A



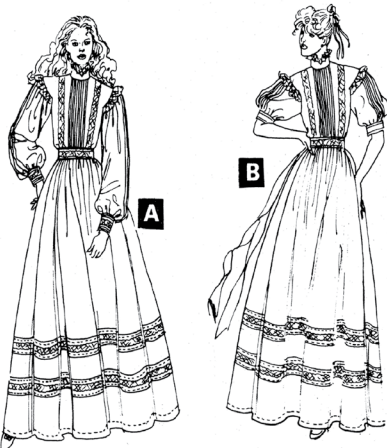
B



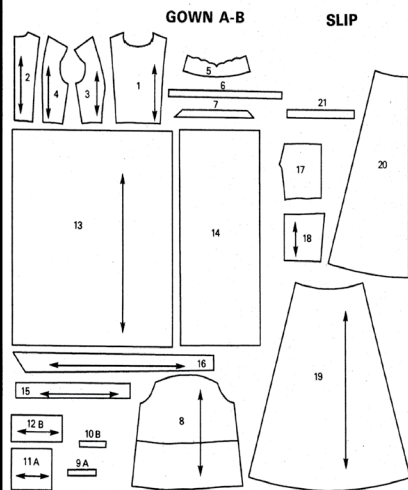
A,B



8876 McCALL'S



PATTERN PIECES



- 1. BODICE FRONT
- 2. BODICE BACK
- 3. BODICE SIDE FRONT
- 4. BODICE SIDE BACK
- 5. COLLAR
- 6. RUFFLE
- 7. ARMHOLE RUFFLE
- 8. SLEEVE
- 9. CONTINUOUS LAP
- 10. CUFF
- 11A
- 11B
- 12
- 13. SKIRT BACK
- 14. SKIRT FRONT
- 15. SASH
- 16. SASH
- 17. BODICE FRONT
- 18. BODICE BACK
- 19. SKIRT BACK
- 20. SKIRT FRONT
- 21. SHOULDER STRAP

PATTERN MARKINGS

- ← **GRAINLINE:** Place on straight grain of fabric, an even distance from selvage.
- **FOLD LINE:** Place on fold of fabric.
- **CUTTING LINE:** For cutting.
- - - **SEAM LINE:** For stitching.
- **SEAM ALLOWANCE:** Distance between cutting and seam lines, usually 5/8" (1.5cm).
- + + **NOTCHES AND CIRCLES:** For matching pattern pieces.

ADJUST IF NECESSARY

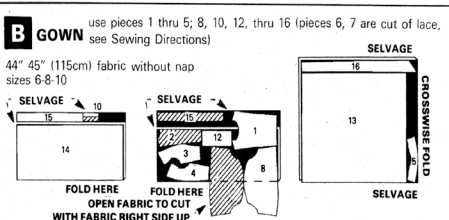
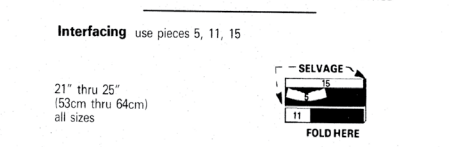
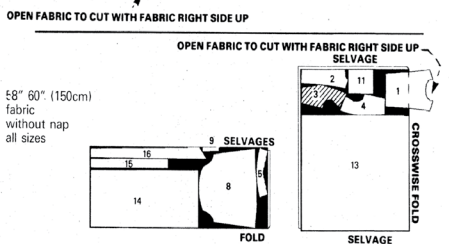
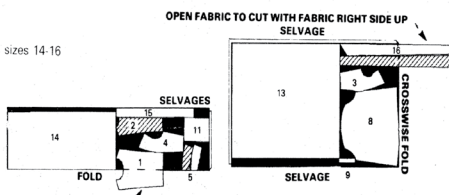
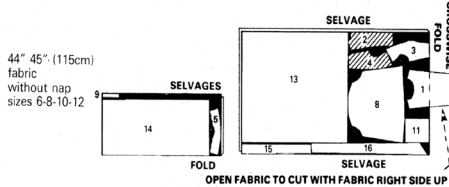
A pattern is made to fit body measurements, with extra ease for comfort and style.
Adjust pieces before placing on fabric. Adjust back waist and finished garment lengths using **McCall's EASY-RULE**.
TO SHORTEN: Crease on Easy-Rule Guide. Fold necessary amount. Tape in place.
TO LENGTHEN: Cut on dotted lines of Easy-Rule Guide. Spread necessary amount. Tape over paper.
See McCall's How To Fit book for other adjustments.

CUTTING AND MARKING

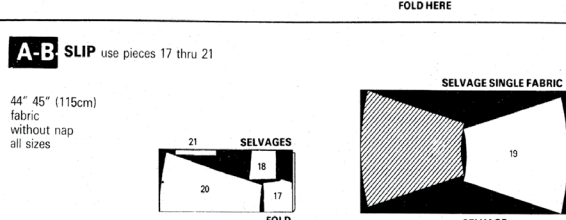
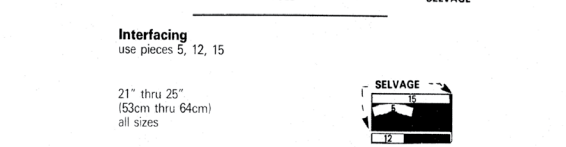
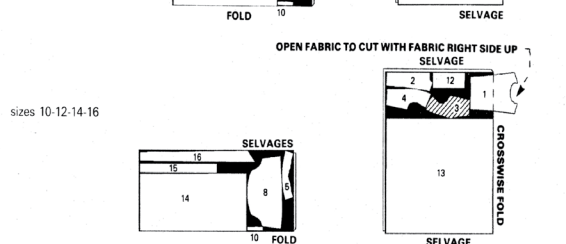
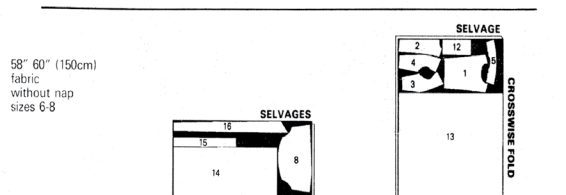
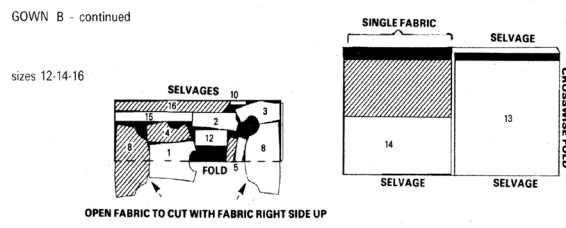
SHRINK FABRIC not labeled pre-shrunk. Press.
CIRCLE LAYOUT for View, Size, Fabric Width.
Use **WITH NAP** layout for fabrics with one-way designs, nap, pile or surface shading.
For **DOUBLE THICKNESS** - fold fabric with Right Sides Together.
For **SINGLE THICKNESS** - place fabric Right Side Up.
Before **CUTTING** place all pieces on fabric according to layout. Overlap margins. Pin. Cut **ACCURATELY** through fabric and pattern on cutting line. Cut notches outward.
Before **REMOVING PATTERN**, transfer markings to Wrong Side of fabric. Two ways which may be used quickly are the Pin and Chalk Pencil method or Tracing Paper and Dressmaker Wheel.

CUTTING LAYOUTS

A GOWN use pieces 1 thru 5; 8, 9, 11, 13 thru 16 (pieces 6, 7 are cut of lace, see Sewing Directions)



Black area denotes fabric. Pattern pieces to be placed with printed side up. Pattern pieces to be placed with printed side down.



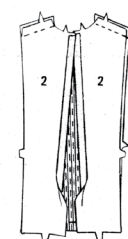
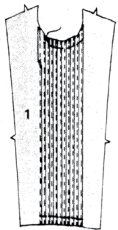
SEWING DIRECTIONS

If FUSIBLE interfacing is used, follow manufacturer's directions.

GOWN

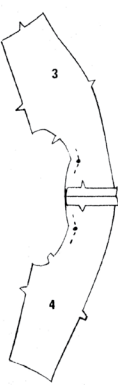
1. BODICE

To make tucks in **BODICE FRONT** (1), on **OUTSIDE** fold on solid line and stitch on dotted line. Press toward **LEFT** side of front. Baste across upper and lower edges of tucks.



Stitch front to each **BODICE BACK** (2) at shoulders.
Press under 5/8" (1.5cm) on back edges.

To reinforce inward corner on armhole edge of each **BODICE SIDE FRONT** (3) and **BODICE SIDE BACK** (4), stitch thru circle 5/8" (1.5cm) from raw edge.

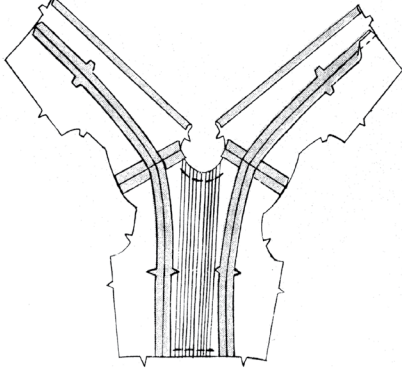


Stitch side front to side back at shoulders.

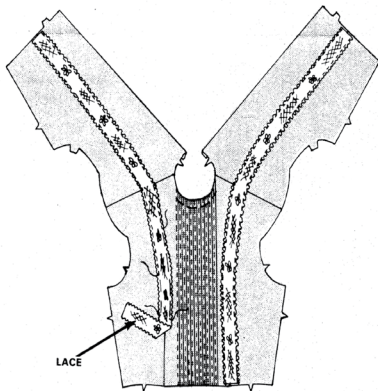
<p>FABRIC KEY</p>	<p>STITCH AND PRESS</p> <p>Pin or baste seams together matching notches. Fit garment before stitching major seams.</p> <p>Stitch in directions of arrows. Use 5/8" (1.5cm) seam allowance unless otherwise indicated.</p>	<p>Press seams open unless otherwise stated. Clip if necessary to press seams flat.</p>	<p>SEAM AND RAW EDGE FINISHES</p> <p>ZIGZAG</p> <p>PINKED</p> <p>TURNED AND STITCHED</p>	<p>SEWING TERMS</p> <p>GRADE</p> <p>Cut seam allowances to graduated widths and interfacing close to stitching.</p>	<p>INVISIBLE STITCH</p> <p>Used for hemming. Turn hem back. Pick up a thread of garment; then pick up a thread of hem diagonally above.</p>
--------------------------	--	---	---	--	--

8876 - PAGE 2

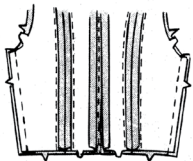
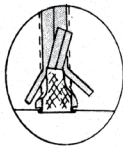
Pin bodice front and back to side front and back, **RIGHT SIDES TOGETHER**, matching notches and seams. Baste. Stitch.



Center lace over seams, **RIGHT SIDES UP**. Baste, easing lace along edge toward armhole. Stitch close to long edges of lace.



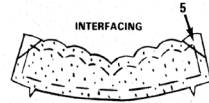
OPTIONAL - On **INSIDE**, carefully cut away fabric under lace to 3/8" (1cm) from stitching. Press remaining seam allowances away from lace.



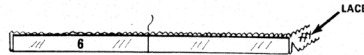
Stitch side seams.

2. COLLAR

Pin interfacing to **WRONG SIDE** of COLLAR (5). Cut corners of interfacing diagonally to 1/4" (6mm) inside seam line, as illustrated. Baste.

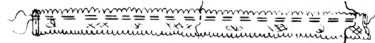


Cut lace, using RUFFLE (6) pattern piece. Transfer markings.



Finish ends of lace with a 3/8" (1cm) narrow hem.

To gather ruffle, machine-baste 3/8" and 1/4" (1cm and 6mm) from lower edge.



Pin ruffle to collar between small circles, **RIGHT SIDES TOGETHER**, matching centers. Pull up bobbin threads and pin, having gathering of ruffle along the 5/8" (1.5cm) seam line of collar. Baste.



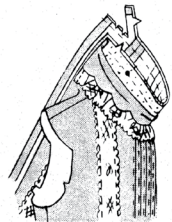
Press under 5/8" (1.5cm) on **NOTCHED** edge of COLLAR FACING (5).



Pin collar facing to collar, **RIGHT SIDES TOGETHER**. Stitch along **UN-NOTCHED** edges, being careful to keep hemmed edges of ruffle free.



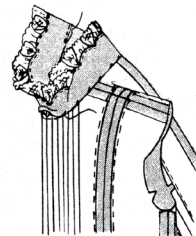
Cut **OUTWARD** corners diagonally. **GRADE** seam allowances: see **SEWING TERMS**. Clip curves and inward corners.



Turn **RIGHT SIDE OUT**. Press.

Pin collar to neck edge, **RIGHT SIDES TOGETHER**, matching notches, centers, **LARGE** circles to shoulder seams and having back edges even. Baste. Stitch.

GRADE seam allowances. Clip curve. Press seam allowances toward collar.

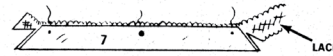


Hem edge of collar facing over seam.

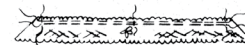
On **OUTSIDE**, stitch upper and lower edges of collar close to seam.

3. SLEEVES

Cut lace, using **ARMHOLE RUFFLE (7)** pattern piece. Transfer markings.



To gather ruffle, machine-baste 3/8" and 1/4" (1cm and 6mm) from raw edge between circles.



Pin ruffle to armhole edge, **RIGHT SIDES TOGETHER**, matching small circles. **LARGE** circle to shoulder seam and having gathering of ruffle along the 5/8" (1.5cm) seam line.

Clip inward corners of bodice to reinforcement stitching.

Pin slanted edge of ruffle to armhole edge below small circle, having raw edges even.

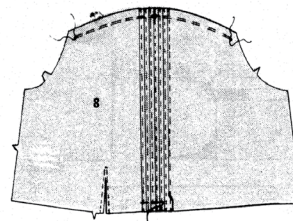
Pull up bobbin threads and adjust gathers to fit. Baste.

VIEW B is illustrated.

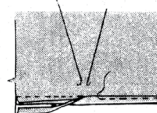
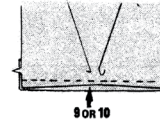
Stitch tucks in sleeve in same manner as bodice front. Press tucks toward sleeve opening.

To gather cap of **SLEEVE (8)**, machine-baste 5/8" and 1/2" (1.5cm and 1.3cm) from raw edge between small circles.

To reinforce sleeve opening, machine-stitch on dotted line, taking one stitch across top of opening. Slash on solid line.



Baste **RIGHT SIDE** of **CONTINUOUS LAP (9)** or **(10)** to **WRONG SIDE** of sleeve, placing reinforcement stitching on sleeve along the 1/4" (6mm) seam allowance on lap. Stitch. Press seam allowances toward lap.



Turn under 1/4" (6mm) on other edge of lap and stitch over seam on **OUTSIDE**.

Bring edges of lap together. Stitch diagonally across upper end of lap.

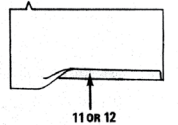
Press front edge of lap to **INSIDE**. Baste to sleeve at lower edge.



Stitch sleeve seam.

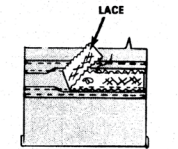
To gather lower edge of sleeve, machine-baste 5/8" and 1/2" (1.5cm and 1.3cm) from raw edge between notch and lap.

Press under 5/8" (1.5cm) on long **UN-NOTCHED** edge of **CUFF (11)** or **(12)**.

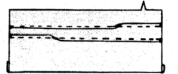


For **VIEW A**. Stitch tucks in cuff in same manner as bodice front.

Press two upper tucks toward **NOTCHED** edge and two lower tucks toward pressed edge. Center lace between tucks, **RIGHT SIDES UP**. Stitch close to long edges of lace.

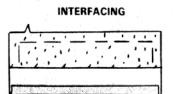


For **VIEW B**. Stitch tucks in cuff in same manner as bodice front. Press upper tuck toward **NOTCHED** edge and lower tuck toward pressed edge.



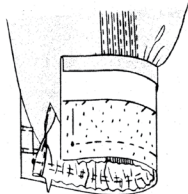
Baste interfacing to **WRONG SIDE** of **NOTCHED** edge of cuff. Sew to fold line.

View B is illustrated.



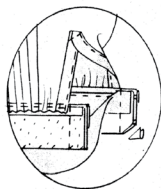
8876 - PAGE 3

Pin cuff to sleeve, **RIGHT SIDES TOGETHER**, matching notches and circles to opening edges. Pull up bobbin threads and adjust gathers to fit. Baste. Stitch.



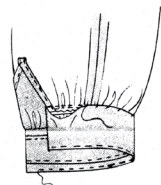
GRADE seam allowances. Press seam allowances toward cuff.

Fold cuff on fold line, **RIGHT SIDES TOGETHER**. Stitch ends.

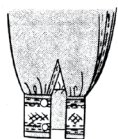


Cut corners diagonally. **GRADE** seam allowances.

Turn **RIGHT SIDE OUT**. Hem edge over seam. Press.

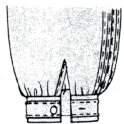


If desired, top-stitch close to all edges of cuff.



For **VIEW A**, make buttonholes in each cuff at markings. Sew buttons to position on each cuff.

For **VIEW B**, make buttonhole in each cuff at marking. Sew button to position on each cuff.



VIEW B

Pin sleeve into armhole, **RIGHT SIDES TOGETHER**, matching notches, underarm seams, small circles and **LARGE** circle to shoulder seam. Pull up bobbin threads and adjust gathers to fit. Baste. Stitch.



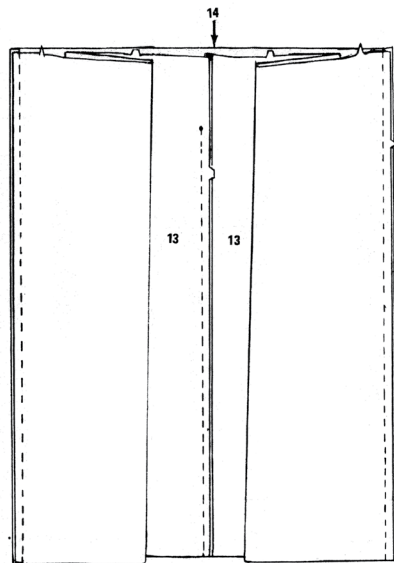
Stitch again 1/4" (6mm) from first stitching. Cut seam allowances close to second stitching below circles.

Turn seam allowances above circles toward bodice.

4. SKIRT

Stitch **SKIRT BACK** (13) sections together at center, ending stitching at circle.

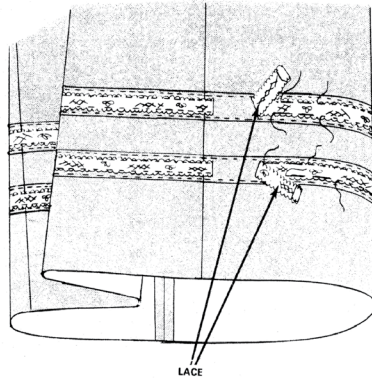
Stitch **SKIRT FRONT** (14) to back.



Stitch tucks in skirt in same manner as bodice front. Press two middle tucks toward each other. Press remaining tucks away from each other.

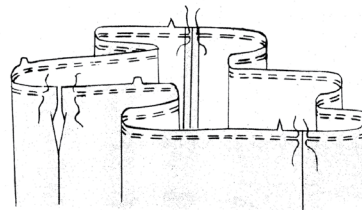
Center lace between tucks as illustrated, **RIGHT SIDES UP**, turning under and lapping ends of lace. Baste. Stitch close to long edges of lace.

Fabric may be cut away under lace same as bodice.



LACE

To gather upper edge of skirt, machine-baste 5/8" and 1/2" (1.5cm and 1.3cm) from raw edge, beginning and ending 1" (25cm) from back opening edges and breaking basting at seams.

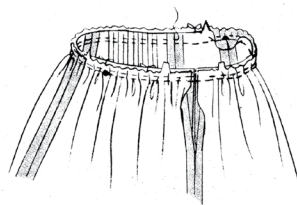


Open up back edges of bodice. Pin skirt to bodice **RIGHT SIDES TOGETHER**, matching notches, centers and circles to side seam.

Pull up bobbin threads and adjust gathers to fit. Baste. Stitch.

Stitch again 1/4" (6mm) from first stitching.

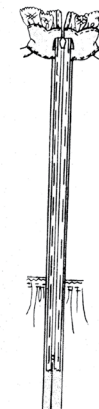
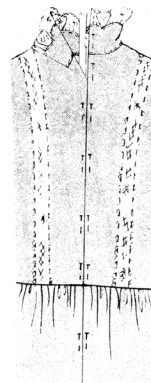
Turn seam allowances toward bodice.



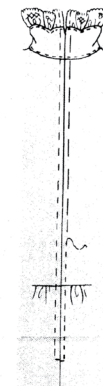
5. ZIPPER

Press under seam allowances along opening edges.

Pin opening edges over closed zipper, **RIGHT SIDES UP**, with edges meeting at center of zipper and placing pull-tab 3/8" (1cm) from upper edge.

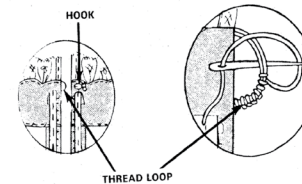


Hand-baste, thru all thicknesses - fabric and tape, turning under upper ends of zipper tape.



On **OUTSIDE**, stitch 1/4" (6mm) from opening edges with a zipper foot.

Fasten neck edge above zipper with a hook and thread loop.



HOOK

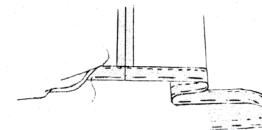
THREAD LOOP

6. FINISHING

HEM

Mark hemline. Turn up hem along marking. Hand-baste close to fold. Press. Trim hem to an even width.

Turn under 1/4" (6mm) on raw edge and stitch in place. Press.

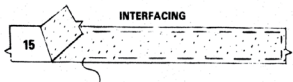


CONTINUED ON OTHER SIDE

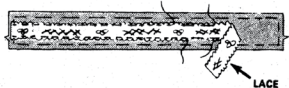
8876 - PAGE 4

SASH

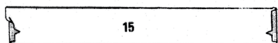
Baste interfacing to WRONG SIDE of SASH (15).



Center lace over sash, RIGHT SIDES UP. Baste. Stitch close to long edges of lace.

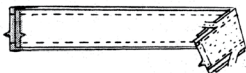


Press under 3/8" (1cm) on NOTCHED edges of SASH FACING (15).



Pin facing to sash RIGHT SIDES TOGETHER. Stitch long UN-NOTCHED edges, taking up a 3/8" (1cm) seam allowance.

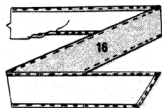
Cut interfacing close to stitching.



Turn RIGHT SIDE OUT.



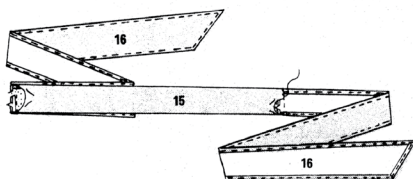
Finish UN-NOTCHED edges of each SASH (16) section with a 3/8" (1cm) narrow hem, folding in fullness at corners.



Pin sash (16) sections to sash (15) RIGHT SIDES TOGETHER. Stitch, taking up a 3/8" (1cm) seam allowance and keeping facing free.

Cut interfacing close to stitching.

Turn seam allowances toward sash facing. Hem facing over seam. Press.



SLIP

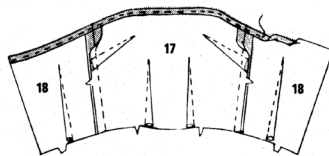
1. BODICE

Stitch darts in BODICE FRONT (17) and in each BODICE BACK (18).

Press as illustrated.

Stitch side seams.

Finish upper edge of bodice with a 5/8" (1.5cm) narrow hem.

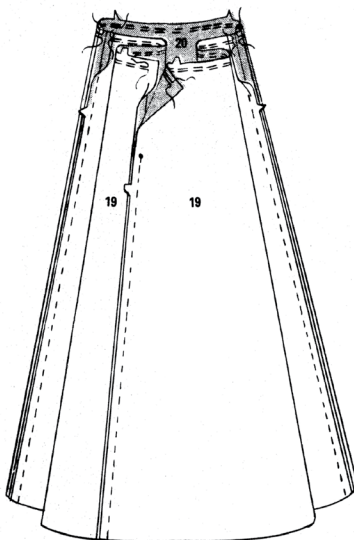


2. SKIRT AND ZIPPER

Stitch SKIRT BACK (19) sections together at center, ending stitching at circles.

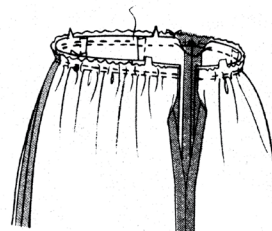
Stitch SKIRT FRONT (20) to back at side front seams.

To gather upper edge of skirt, machine-baste 5/8" and 1/2" (1.5cm and 1.3cm) from raw edge, beginning and ending 1" (2.5cm) from back opening edges and breaking basting at seams.

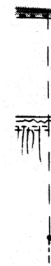


Pin skirt to bodice RIGHT SIDES TOGETHER, matching notches, centers, circles to side seams and having back edges even. Pull up bobbin threads and adjust gathers to fit. Baste. Stitch.

Stitch again 1/4" (6mm) from first stitching. Press seam allowances toward bodice.

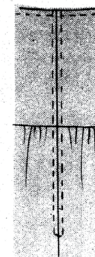


Machine-baste back opening edges together above circle. Press open.

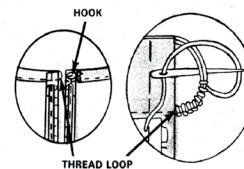


On INSIDE, center closed zipper face down over basted seam with pull-tab 3/8" (1cm) from upper edge. Hand-baste thru all thicknesses - tape and fabric, turning down upper ends of zipper tapes.

On OUTSIDE, stitch 1/4" (6mm) from seam with a zipper foot. Remove basting.



Fasten edge above zipper with a hook and thread loop.



3. SHOULDER STRAPS

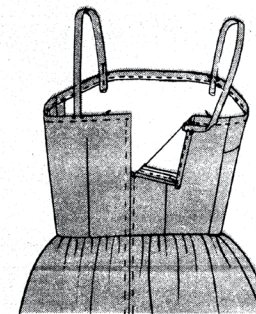
Fold each SHOULDER STRAP (21) in half lengthwise, RIGHT SIDES TOGETHER. Stitch long edge, taking up a 3/8" (1cm) seam allowance.



Turn RIGHT SIDE OUT. Press.

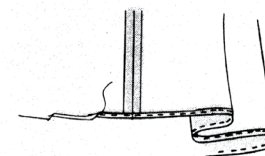
Sew straps to INSIDE of bodice back between circles, lapping back 5/8" (1.5cm) over ends of straps.

Pin front edge of straps to INSIDE of bodice front between circles, lapping front 2" (5cm) over ends of straps. Try on slip and adjust straps if necessary. Sew straps in place. Cut off excess.

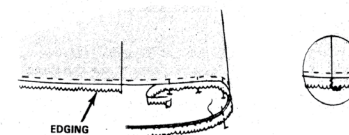


4. HEM

Finish lower edge of slip with a 3/8" (1cm) narrow hem.



Pin lower edge of slip over straight edge of edging, RIGHT SIDES UP, turning in ends of edging. Sew in place by hand or machine. Slipstitch ends of edging together.





Congrats!

You've completed your sewing adventure

SHARE YOUR LOOK



Post your pattern and tag us using [#simplicitypatterns](#)
[@simplicity_creative_group](#)
[@simplicitymccallsuk](#)
[@simplicitymccallsaustralia](#)
for a chance to be featured on our social media.

Look for more PDF patterns at [simplicity.com](#) or for customers outside the U.S. and Canada visit [sewdirect.com](#) and [sewdirect.com.au](#)

Have a question or need help with your sewing project contact us:
[Simplicity.com](#) [Sewdirect.com](#) [Sewdirect.com.au](#)

McCall's
by **design**_{group}

McCall's ©2025 a division of IG Design Group Americas Inc. • Atlanta, GA 30342 USA [www.thedesigngroup.com](#) • All Rights Reserved. [www.mccall.com](#) • Made in the U.S.A. Fabriqué aux États-Unis.
To be used for individual private home use only and not for commercial or manufacturing purposes. • A usage privé seulement et non à des fins commerciales ou de production en série. • Para uso privado solamente, no se puede utilizar con propósitos de comercialización o de producción en serie.