

McCall's

M8594

VINTAGE
70's

LAURA ASHLEY
SINCE 1953

This sewing pattern includes multiple view options with simple instructions. Show your make!
Ce patron de couture comprend plusieurs modèles avec des instructions faciles! Montrez votre réalisation!

Designed and
printed in USA

Average

MISSES' DRESS

Suggested Fabrics: Cotton Blends, Eyelet, Lightweight Cotton, Synthetic Crepe, Voile.

Notions: A, B, C: One 14" (36cm) zipper, hook and eye, ¾ yd. (0.8m) of ¾" (1.5cm) ribbon. **Also for A:** 1¾ yds. (1.7m) of ½" (1.3cm) trimming.

Sizes	6	8	10	12	14	16	18	20	22	24
European	32	34	36	38	40	42	44	46	48	50

BODY MEASUREMENTS: Select pattern size based on body measurements

Bust	30½	31½	32½	34	36	38	40	42	44	46	Ins.
Waist	23	24	25	26½	28	30	32	34	37	39	"
Hip-9" below waist	32½	33½	34½	36	38	40	42	44	46	48	"
Back-neck to waist	15½	15¾	16	16¼	16½	16¾	17	17¼	17½	17¾	"

View A Dress	45**	7%	7%	7%	7%	8	8	8½	8½	8½	8½	Yds.
	60**	5%	5%	5%	5%	5%	6	6¼	6½	6¾	7	"

View B Dress	45**	5%	5%	5%	5%	5¼	5½	5½	6½	6¼	6½	Yds.
	60**	4%	4%	4%	4%	4%	4%	4½	4½	4½	4½	"

View C Dress	45**	4	4	4	4	4¼	4¾	4¾	5½	5¼	5¼	Yds.
	60**	3¼	3¼	3¼	3¼	3¼	3¾	3¾	3½	3½	3¾	"

FINISHED GARMENT MEASUREMENTS (Includes Design and Wearing Ease)

View A, B, C Bust - Suppressed Fit

	31½	32½	33½	35	37	39	41	43	45	47	Ins.
--	-----	-----	-----	----	----	----	----	----	----	----	------

View A, B, C Bust - Standard Fit

	33½	34½	35½	37	39	41	43	45	47	49	Ins.
--	-----	-----	-----	----	----	----	----	----	----	----	------

Width, lower edge

View A, B Dress (excl. ruffle)

	90¾	91¾	92¾	94¼	96¼	98¼	100¼	102¼	104¼	106¼	Ins.
--	-----	-----	-----	-----	-----	-----	------	------	------	------	------

View C Dress (excl. ruffle)

	85¼	86¾	87¾	88¾	90¾	92¾	94¾	96¾	98¾	100¾	Ins.
--	-----	-----	-----	-----	-----	-----	-----	-----	-----	------	------

Finished back length from base of neck

View A, B Dress (incl. ruffle)

	59½	59¾	60	60¼	60½	60¾	61	61¼	61½	61¾	Ins.
--	-----	-----	----	-----	-----	-----	----	-----	-----	-----	------

View C Dress (incl. ruffle)

	42½	42¾	43	43¼	43½	43¾	44	44¼	44½	44¾	Ins.
--	-----	-----	----	-----	-----	-----	----	-----	-----	-----	------

*with nap **without nap

Moins facile

ROBE POUR JEUNES FEMMES

Tissus Conseillés: Cotonnades, Broderie anglaise, Coton léger, Crêpe synthétique, Voile.

Mercerie: A,B,C: 1 fermeture à glissière de 36cm, agrafe, 0,8m de ruban de 1.5cm. **Aussi pour A:** 1,7m de garniture de 1,3cm.

Tailles	6	8	10	12	14	16	18	20	22	24
Françaises	34	36	38	40	42	44	46	48	50	52
Européen	32	34	36	38	40	42	44	46	48	50

MESURES DU CORPS: Choisissez la taille du patron basée sur les mesures du corps

Poitrine 78 80 83 87 92 97 102 107 112 117 cm

Taille 58 61 64 67 71 76 81 87 94 99 "

Hanches (23cm au-dessous de la taille)

83 85 88 92 97 102 107 112 117 122 cm

Dos du cou à la taille 39.5 40 40.5 41.5 42 42.5 43 44 44.5 45 "

Modèle A Robe 115cm* 7.2 7.2 7.2 7.2 7.3 7.3 7.4 7.4 7.5 7.7 m

150cm* 5.4 5.4 5.4 5.4 5.4 5.5 5.7 5.9 6.2 6.3 "

Modèle B Robe 115cm* 4.7 4.7 4.7 4.7 4.8 4.8 5.0 5.6 5.7 5.9 m

150cm* 4.0 4.0 4.0 4.0 4.0 4.0 4.0 4.1 4.1 4.1 "

Modèle C Robe 115cm* 3.7 3.7 3.7 3.7 3.9 4.0 4.0 4.7 4.8 4.8 m

150cm* 3.0 3.0 3.0 3.0 3.0 3.0 3.1 3.1 3.2 3.3 "

MESURES DES VÊTEMENTS FINI (Motif et aisance de port compris)

Modèle A,B,C Poitrine - coupe près du corps

80 83 85 89 94 99 104 109 114 119 cm

Modèle A,B,C Poitrine - coupe standard

85 88 90 94 99 104 109 114 119 124 cm

Largeur à l'ourlet

Modèle A,B Robe (non-compris le volant)

231 233 236 239 244 250 255 260 265 270 cm

Modèle C Robe (non-compris le volant)

217 219 222 225 231 236 241 246 251 256 cm

Longueur finie - dos, votre nuque à l'ourlet

Modèle A,B Robe (y compris le volant)

151 151 152 153 154 154 155 156 156 157 cm

Modèle C Robe (y compris le volant)

108 109 109 110 110 111 112 112 113 114 cm

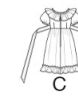
*avec sens **sans sens



1

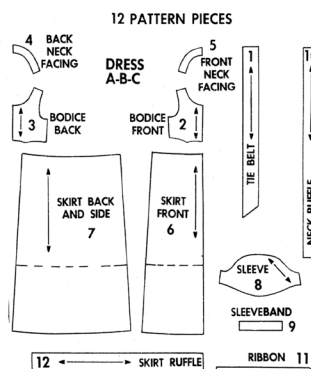


1



0

4546

CAREFREE PATTERNS
FROM
McCALL'SSELECT PATTERN PIECES
FOR VIEW YOU HAVE CHOSEN

VIEW A, B OR C - USE PIECES 1 thru 12

NOTE: BODICE PIECES 2 AND 3 HAVE LESS EASE IN BUST FOR "LAURA ASHLEY'S" DESIGNER LOOK. SELECT CORRESPONDING PIECES 4, 5 AND 11.

BODICE PIECES 2A AND 3A HAVE STANDARD McCALL'S PATTERN BUST EASE. SELECT CORRESPONDING PIECES 4A, 5A AND 11A.

SEE IMPORTANT COPY BELOW IN LAYOUT AREA.

HOW TO USE A McCALL'S CAREFREE PATTERN

STUDY THE PATTERN

Select pieces for VIEW you have chosen.

Check identification markings - Number, Size, Name and View - on each piece.

Understand the pattern markings.

Grainline: Place line on straight grain of fabric, an even distance from selvage.

Place on fold

Fold Line: Place on fold of fabric.

Cutting Line: For cutting.

Seam Line: For sewing.

Seam Allowance: Distance between cutting and seam lines is usually 5/8" (1.5cm).

Notches and Circles: For matching pattern pieces.

ADJUST IF NECESSARY

A pattern is made to fit specific body measurements, with extra ease for comfort and style.

Compare your body measurements to those listed on pattern envelope. Adjust pieces before placing them on fabric. Back waist and finished garment lengths can be adjusted using McCALL'S Easy-Rule Guide.*

To Shorten: Crease pattern on dotted lines of Easy-Rule Guide. Fold pleat necessary amount. Tape in place.

To Lengthen: Cut pattern on dotted lines of Easy-Rule Guide. Spread necessary amount. Tape over paper.

NOTE THE MEASUREMENTS

Abbreviations "mm" and "cm" are metric equivalent for inches. They are provided for the convenience of those using the metric system of measurement.

1/8" (3mm)	1/2" (1.3cm)	1" (2.5cm)
1/4" (6mm)	5/8" (1.5cm)	1 1/4" (3.1cm)
3/8" (1cm)	3/4" (2cm)	2" (5cm)

LAYOUT FOR CUTTING

Shrink fabric not labeled pre-shrunk. Press.

Circle layout for View, Size, Fabric Width.

- Use With Nap layout for fabrics with one-way designs, nap, pile or surface shading.
- Use Without Nap layout for other fabrics.

Arrange fabric for cutting as shown on layout:

- Double Thickness - fold fabric with Right Sides Together.
- Single Thickness - place fabric Right Side Up.

Before cutting, place all pieces on fabric according to layout. Overlap margins. Pin.

CUTTING AND MARKING

Cut accurately through fabric and pattern on cutting line. Cut notches outward.

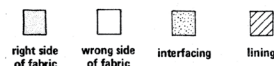
Before removing pattern, transfer markings to Wrong Side of fabric. One way which may be used quickly and safely on the widest range of fabrics is the Pin and Chalk Pencil method.*

Questions about sewing? Write Meg Carter, The McCALL Pattern Company, 230 Park Avenue, New York, New York 10017.

*See McCALL'S Sewing Book for other adjustments and marking information.

SEWING DIRECTIONS

READ directions for View you are making before beginning to sew. STUDY the drawings carefully.



SEW exactly on seam lines indicated on pattern. To make a seam:

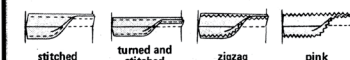
PIN two pieces of fabric, Right Sides Together matching notches and seam lines. BASTE, if desired, by hand or machine.

FIT garment before stitching major seams.

STITCH in direction of arrows. Use 5/8" (1.5cm) seam allowance unless otherwise indicated.

PRESS seams open unless otherwise noted.

FINISH raw edges of seams, facings and hems to prevent raveling:



SEWING TERMS

GRADE: Cut seam allowances to graduated widths and interfacing close to stitching.

UNDERSTITCHING: Row of machine stitching thru facing and seam allowances close to seam line. Prevents facing from rolling to outside.

INVISIBLE STITCH: Used for hemming. Turn hem back. Pick up a thread of garment; then pick up a thread of hem diagonally above.

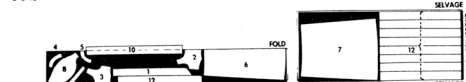
CUTTING LAYOUTS

IMPORTANT - READ BEFORE LAYING OUT PATTERN PIECES

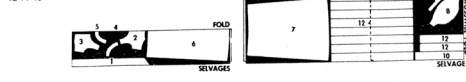
"LAURA ASHLEY'S" FAMOUS DESIGNER LOOK. FEATURES A HIGH, TIGHT BODICE THAT ACTUALLY SUPPRESSES THE BUST. SELECT BODICE PIECES 2, 3, 4, 5, 11. TO ACHIEVE THIS EXACT LOOK. IF YOU PREFER THE STANDARD AMOUNT OF BUST EASE FOUND IN ALL McCALL'S PATTERNS, SELECT BODICE PIECES 2A, 3A, 4A, 5A, 11A. USE YOUR SELECTED PATTERN PIECES FOR BODICE IN FABRIC LAYOUTS BELOW.

35" 36" (90cm) FABRIC WITHOUT NAP

SIZES 6-8-10

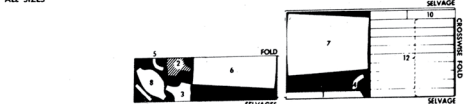


SIZES 12-14-16



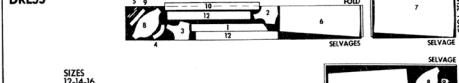
44" 45" (115cm) FABRIC WITHOUT NAP

ALL SIZES

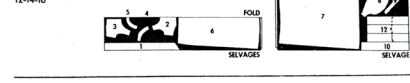


35" 36" (90cm) FABRIC WITHOUT NAP

DRESS SIZES 6-8-10



SIZES 12-14-16

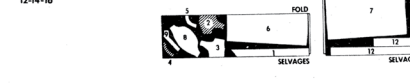


44" 45" (115cm) FABRIC WITHOUT NAP

SIZES 6-8-10



SIZES 12-14-16

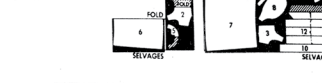


35" 36" (90cm) FABRIC WITHOUT NAP

DRESS SIZES 6-8-10



SIZES 12-14-16



44" 45" (115cm) FABRIC WITHOUT NAP

SIZES 6-8-10



SIZES 12-14-16



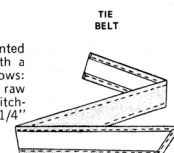
4546

DRESS

1. BODICE

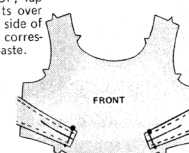
TIE BELTS

Finish long edges and pointed end of each tie belt with a NARROW HEM as follows: stitch 1/8" (3mm) from raw edge. Turn in on line of stitching. Press. Turn in again 1/4" (6mm) and stitch in place.



On OUTSIDE, make a pleat at straight end of each tie belt in direction of arrow. Baste across pleat 1/4" (6mm) from raw edges. Press.

With RIGHT SIDES UP, lap pleated end of tie belts over outer dart line on each side of bodice front, matching corresponding circles. Hand-baste.



CONTINUED ON OTHER SIDE

4546 - PART 1

1. CONTINUED

DARTS

Stitch darts in bodice front, catching in end of tie belts.

Cut away fold of darts to 5/8" (1.5cm) from stitching. Press toward center front.

Stitch dart in bodice backs. Press toward center back.

SHOULDER AND SIDE SEAMS

Stitch bodice backs to bodice front at shoulders and sides.

NECK FACING

Stitch back neck facings to front neck facing at shoulders.

Finish curved UN-NOTCHED edges of facing: see SEWING DIRECTIONS.

Pin facing to neck edge of bodice, RIGHT SIDES TOGETHER, matching notches and shoulder seams. Baste and stitch.

GRADE seam allowances: see SEWING TERMS. Clip curves.

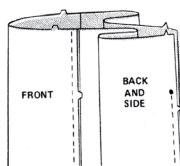
Turn facing to INSIDE. Press. Catch-stitch to shoulder seams.

2. SKIRT

SEAMS

Stitch skirt front to skirt back and sides.

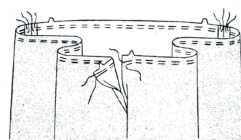
Stitch center back seam from lower edge to circle.



2. CONTINUED

GATHERS

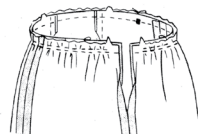
Gather upper edge of skirt by machine-basting along lines indicated on pattern, breaking basting at seams.



3. STITCH SKIRT TO BODICE

Pin skirt to bodice, RIGHT SIDES TOGETHER, matching notches, center fronts, back edges and skirt seams to squares on bodice. Draw up gathers to fit. Baste, adjusting gathers. Stitch.

Press seam allowances toward bodice.



4. ZIPPER

Open out back neck facings.

Machine-baste center back opening edges together above circle. Press open.

On INSIDE, center zipper face down over seam, with pull-tab 3/8" (1cm) down from neck seam. Hand-baste.

On OUTSIDE, stitch 1/4" (6mm) from seam with a zipper foot. Remove basting.

Turn down back neck facings again. Turn in back edges and hem to zipper tapes.

5. SLEEVES

SLEEVE PREPARATION

Gather sleeve by machine-basting along lines indicated on pattern.



Pin lower edge of sleeve to NOTCHED edge of sleeveband, RIGHT SIDES TOGETHER, matching notches and underarm edges. Draw up gathers to fit. Baste, adjusting gathers. Stitch.

GRADE seam allowances. Press toward band.

Stitch underarm seam of sleeve and sleeveband, matching cross seams.

Fold sleeveband on fold line, WRONG SIDES TOGETHER. Turn in 3/8" (1cm) on free edge and hem over seam.

SETTING SLEEVE INTO ARMHOLE

Place sleeve into armhole with RIGHT SIDES TOGETHER. Pin, matching notches, underarm seams, small circles and LARGE circle on sleeve to shoulder seam.

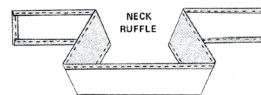
Draw up gathers to fit. Baste, adjusting gathers. Stitch.

Press seam allowances toward sleeve.

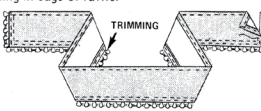
6. NECK RUFFLE AND TRIMMING

NECK RUFFLE

Finish edges of neck ruffle with a NARROW HEM same as tie belts.



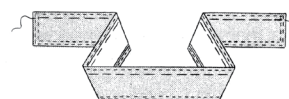
For VIEW A, with RIGHT SIDES UP, lap and pin straight edge of trimming about 1/8" (3mm) over back and lower edges of neck ruffle, pleating trimming at corners. (If desired, finish ends of trimming with a NARROW HEM.) Stitch along straight edge of trimming, catching in edge of ruffle.



NOTE: The trimming will not be shown on the following ruffle illustrations.

6. CONTINUED

Gather ruffle along line indicated on pattern.



With RIGHT SIDES UP, pin ruffle to bodice, matching gathering line on ruffle to stitching line on bodice, and LARGE circles on ruffle to shoulder seams, having back edges even. Draw up gathers to fit. Baste, adjusting gathers. Stitch along gathering line on ruffle.

TRIMMING

Cut two pieces of ribbon, using RIBBON pattern piece as a guide.

Turn in 5/8" (1.5cm) on back end of each piece of ribbon. Fold ribbon on fold line WRONG SIDES TOGETHER. Press. Stitch double edges together to SMALL circles.

RIBBON



With RIGHT SIDES UP, center and pin ribbon over ruffle gathering line, as illustrated, matching corresponding circles and having back edges even. Stitch along center of ribbon thru all thicknesses, stitching to SMALL circles each side of center front.

Tie free ends of ribbon into a bow at center front.

7. FINISHING

HOOK AND EYE

Sew a hook and eye above zipper.

LOWER EDGE

Finish lower edge of dress with a NARROW HEM as follows: stitch 1/4" (6mm) from raw edge. Turn in on line of stitching. Press. Turn in again 3/8" (1cm) and stitch in place.

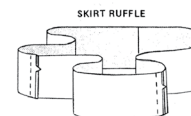
7. CONTINUED

SKIRT RUFFLES

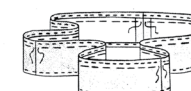
Stitch 3 ruffle sections together, forming a circle.

Repeat 5 times, making 6 ruffles.

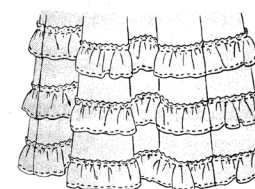
Finish edges of ruffles with a NARROW HEM same as neck ruffle.



Gather ruffles along line indicated on pattern, breaking basting at seams.

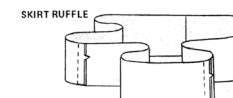


With RIGHT SIDES UP, pin ruffles to skirt, matching gathering line on ruffles to stitching lines on skirt and ruffle seams to skirt seams. Draw up gathers to fit. Baste, adjusting gathers. Stitch along gathering line on ruffles. (NOTE: Handle ruffles one at a time, starting with upper ruffle and working downward.)



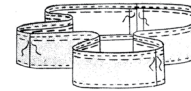
SKIRT RUFFLE

Stitch the 3 ruffle sections together, forming a circle.



Finish edges of ruffle with a NARROW HEM, same as neck ruffle.

Gather ruffle along line indicated on pattern, breaking basting at seams.



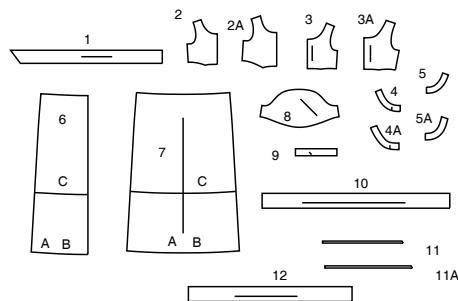
With RIGHT SIDES UP, pin ruffle to skirt, matching gathering line on ruffle to stitching line on skirt and ruffle seams to skirt seams. Draw up gathers to fit. Baste, adjusting gathers. Stitch along gathering line on ruffle.



SUPPLEMENTAL CUTTING LAYOUTS

IMPORTANT – READ BEFORE LAYING OUT PATTERN PIECES.
"LAURA ASHLEY'S" FAMOUS DESIGNER LOOK FEATURES A HIGH TIGHT BODICE THAT ACTUALLY SUPPRESSES THE BUST. SELECT PATTERN PIECES 2, 3, 4, 5 AND 11 TO ACHIEVE THIS EXACT LOOK. IF YOU PREFER THE STANDARD AMOUNT OF BUST EASE FOUND IN ALL McCall's PATTERNS, SELECT PATTERN PIECES 2A, 3A, 4A, 5A AND 11A. USE YOUR SELECTED PATTERN PIECES IN FABRIC LAYOUTS BELOW.

12 PIECES



- 1 TIE BELT
- 2 BODICE FRONT
- 2A BODICE FRONT
- 3 BODICE BACK
- 3A BODICE BACK
- 4 BACK NECK FACING
- 4A BACK NECK FACING
- 5 FRONT NECK FACING
- 5A FRONT NECK FACING
- 6 SKIRT FRONT
- 7 SKIRT BACK AND SIDE
- 8 SLEEVE
- 9 SLEEVE BAND
- 10 NECK RUFFLE
- 11 TIE
- 11A TIE
- 12 SKIRT RUFFLE

PATTERN MARKINGS

GRAINLINE: Place on straight grain of fabric, parallel to selvage or fold.

FOLDLINE: Place line on fold of fabric.

BUTTONHOLE MARKING: Indicates exact length and placement of buttonholes.

BUTTON MARKING: Indicates button placement.

NOTCHES AND SYMBOLS: For matching seams and construction details.

Indicates the Bustline, Waistline, Hip and/or Biceps. Measurements refer to circumference of Finished Garment (Body Measurement + Wearing Ease + Design Ease). Adjust pattern if necessary. The measurement excludes pleats, tucks, darts and seam allowances.

SEAM ALLOWANCE: 5/8" (1.5cm) included unless otherwise indicated, but not printed on tissue.

ADJUST IF NECESSARY

Lengthen or Shorten at adjustment lines (==) or where indicated on pattern. If substantial length is added, you may need to purchase additional fabric.

TO SHORTEN: Crease along adjustment line. Make a fold half the amount needed. Tape in place.

TO LENGTHEN: Slash between adjustment lines. Spread amount as needed, keeping edges parallel. Tape over paper.

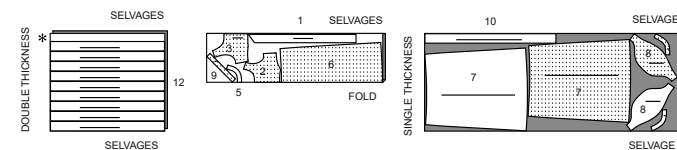
When Alteration lines are not on tissue, lengthen or shorten at lower edge.

CUTTING LAYOUTS

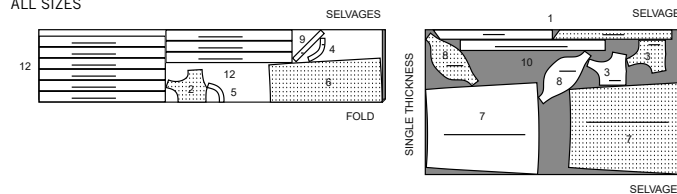
VIEW A DRESS

USE PIECES 1 2 3 4 5 6 7 8 9 10 12

45" (115CM) WITH NAP / ALL SIZES



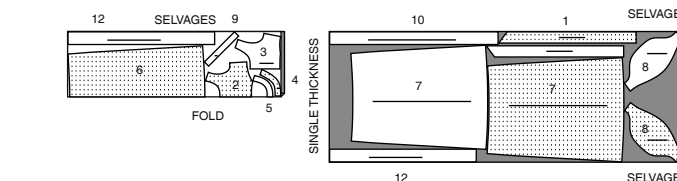
60" (150CM) WITH NAP
ALL SIZES



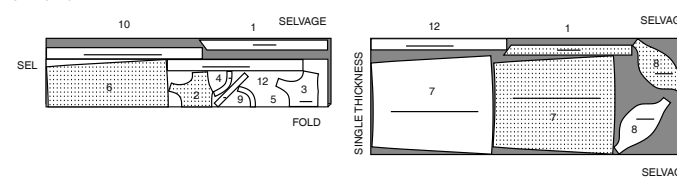
VIEW B DRESS

USE PIECES 1 2 3 4 5 6 7 8 9 10 12

45" (115CM) WITH NAP
SIZES 6 8 10 12 14 16 18



45" (115CM) WITH NAP
SIZES 20 22 24



CUTTING AND MARKING

SHRINK FABRIC if not labeled pre-shrunk. Press.

CIRCLE LAYOUT for View, Size, Fabric Width.

Use **WITH NAP** layout for fabrics with one-way designs, nap, pile or surface shading. Because most knits have surface shading, a with nap layout is used.

For **DOUBLE THICKNESS (WITH FOLD)** - fold fabric with right sides together.

*** DOUBLE THICKNESS (WITHOUT FOLD)** - For fabrics with nap, fold fabric crosswise, right sides together. Mark as shown. Cut along crosswise fold of fabric (A). Turn upper layer 180° so arrows go in same direction and place over lower layer, right sides together (B).

For **SINGLE THICKNESS** - place fabric right side up. (For Fur Pile fabrics, place pile side down.)

★ Cut other pieces first, allowing enough fabric to cut this piece. Open fabric. For "Cut 1" pieces, cut piece once on single layer of fabric with piece face up on right side of fabric.

Pattern may have cutting lines for several sizes. Select the proper cutting line or pattern pieces for your size.

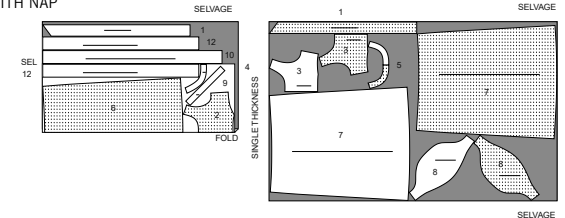
Before **CUTTING** place all pieces on fabric according to layout. Pin. (Layouts show approximate position of pattern pieces; position may vary according to your pattern size.) Cut **ACCURATELY**, cutting notches outward.

Before removing pattern, **TRANSFER MARKINGS** and lines of construction to Wrong Side of fabric, using the Pin and Chalk Pencil method or Tracing Paper and Dressmaker Wheel. Markings needed on right side of fabric should be thread traced.

NOTE: Broken-line boxes (al bl cl) in layouts represent pieces cut by measurements provided.

RIGHT SIDE OF PATTERN	WRONG SIDE OF PATTERN	RIGHT SIDE OF FABRIC	WRONG SIDE OF FABRIC

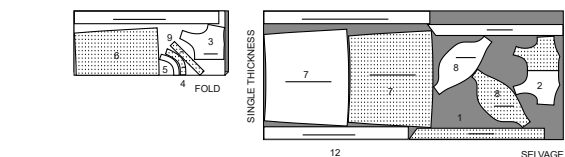
60" (150CM) WITH NAP
ALL SIZES



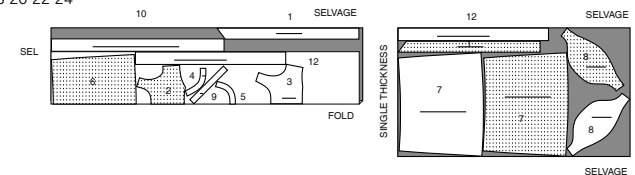
VIEW C DRESS

USE PIECES 1 2 3 4 5 6 7 8 9 10 12

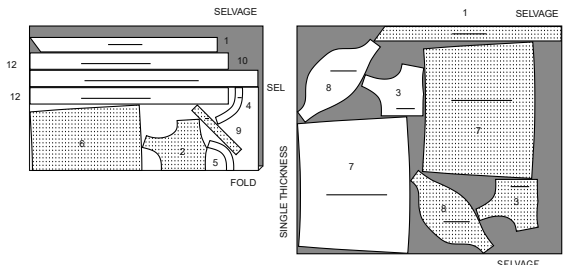
45" (115CM)
WITH NAP
SIZES 6 8 10 12 14 16 18



45" (115CM)
WITH NAP
SIZES 20 22 24



60" (150CM)
WITH NAP
ALL SIZES





Congrats!

You've completed your sewing adventure

SHARE YOUR LOOK



Post your pattern and tag us using [#simplicitypatterns](#)
[@simplicity_creative_group](#)
[@simplicitymccallsuk](#)
[@simplicitymccallsaustralia](#)
for a chance to be featured on our social media.

Look for more PDF patterns at [simplicity.com](#) or for customers outside the U.S. and Canada visit [sewdirect.com](#) and [sewdirect.com.au](#)

Have a question or need help with your sewing project contact us:
[Simplicity.com](#) [Sewdirect.com](#) [Sewdirect.com.au](#)

McCall's
by **design**_{group}

McCall's ©2025 a division of IG Design Group Americas Inc. • Atlanta, GA 30342 USA [www.thedesigngroup.com](#) • All Rights Reserved. [www.mccall.com](#) • Made in the U.S.A. Fabriqué aux États-Unis.
To be used for individual private home use only and not for commercial or manufacturing purposes. • A usage privé seulement et non à des fins commerciales ou de production en série. • Para uso privado solamente, no se puede utilizar con propósitos de comercialización o de producción en serie.