

McCall's

M8593



A

B

A

B

Designed and printed in USA

This sewing pattern includes multiple view options with simple instructions. Show your make!
Ce patron de couture comprend plusieurs modèles avec des instructions faciles! Montrez votre réalisation!

Easy						
GIRLS' TOP AND DRESS						
Suggested Fabrics: Cotton Blends, Cotton Lawn, Double Gauze, Voile. Interfacing: Lightweight Fusible.						
Notions: A: One 18" (45cm) invisible zipper, one pkg. of ½" (1.3cm) single fold bias tape. B: ¾ yd. (0.8m) of ¾" (1cm) elastic.						
Sizes	7	8	10	12	14	
BODY MEASUREMENTS: Select pattern size based on body measurements						
Chest	26	27	28½	30	32	Ins.
Waist	23	23½	24½	25½	26½	"
Hip	27	28	30	32	34	"
Back-neck to waist	11½	12	12¾	13½	14¼	"
Height	50	52	56	58½	61	"
Dress A	45, 60**					
	1¼	1¾	1¾	1½	1¾	"
Top B	45**	2¼	2¼	2¼	2¾	Yds.
	60**	1¾	1¾	1½	1¾	"
Interfacing	20"	¾	¾	1	1	"
FINISHED GARMENT MEASUREMENTS (Includes Design and Wearing Ease)						
A Bust	29½	30½	32	33½	35½	Ins.
B Bust	30	31	32½	34	36	"
A Waist	30	31	32½	34	36	"
B Waist	28	29	30½	32	34	"
Width, lower edge						
Dress A	69	70	72	74	76	Ins.
Top B	49	50	52	54	56	"
Finished back length from base of neck						
Dress A	24	25¾	27¾	29¾	31¾	Ins.
Top B	20	21¾	23¾	25¾	27¾	"

*with nap **without nap

Facile						
HAUT ET ROBE POUR FILLES						
Tissus Conseillés: Cottonnades, Linon de coton, Double Gaze, Voile. Entoilage: Thermocollant léger.						
Mercerie: A: 1 fermeture à glissière invisible de 45cm, 1 paquet de ruban de biais simple de 1.3cm. B: 0.8m d'élastique de 1cm.						
Tailles	7	8	10	12	14	
MESURES DU CORPS: Choisissez la taille du patron basée sur les mesures du corps						
Poitrine	66	68.5	72.5	76	81.5	cm
Taille	58.5	59.5	62	65	67.5	"
Hanches	68.5	71	76	81.5	86.5	"
Dos du cou à la taille	29	30.5	32.5	34.5	36	"
Hauteur	127	132	143	149	155	"
Robe A	115, 150cm*					
	1.1	1.1	1.3	1.4	1.5	"
Haut B	115cm*	1.9	1.9	2.1	2.1	2.2
	150cm*	1.3	1.3	1.4	1.4	1.5
Entoilage	51cm	0.8	0.8	0.8	0.9	0.9
MESURES DES VÊTEMENTS FINI (Motif et aisance de port compris)						
A Poitrine	75	77	81	85	90	cm
B Poitrine	76	79	83	86	91	"
A Taille	76	79	83	86	91	"
B Taille	71	74	77	81	86	"
Largeur à l'ourlet						
Robe A	175	178	183	188	193	cm
Haut B	124	127	132	137	142	"
Longueur finie – dos, votre nuque à l'ourlet						
Robe A	61	65	28	76	81	cm
Haut B	51	55	60	65	70	"

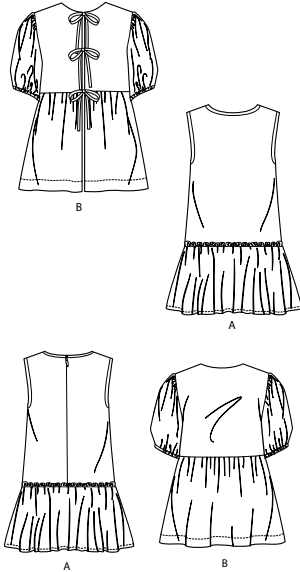
*avec sens **sans sens



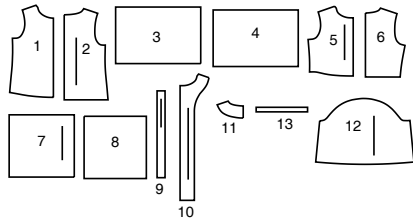
A



B



13 PATTERN PIECES



- 1 Bodice Front-A
- 2 Bodice Back-A
- 3 Skirt Front-A
- 4 Skirt Back-A
- 5 Upper Front-B
- 6 Upper Back-B
- 7 Lower Front-B
- 8 Lower Back-B
- 9 Tie End-B
- 10 Front Facing-B
- 11 Back Facing-B
- 12 Sleeve-B
- 13 Guide for Elastic-B

PATTERN MARKINGS

GRAINLINE: Place on straight grain of fabric, parallel to selvage or fold.

FOLDLINE: Place line on fold of fabric.

BUTTONHOLE MARKING: Indicates exact length and placement of buttonholes.

BUTTON MARKING: Indicates button placement.

NOTCHES AND SYMBOLS: For matching seams and construction details.

Indicates the Bustline, Waistline, Hip and/or Biceps. Measurements refer to circumference of Finished Garment (Body Measurement + Wearing Ease + Design Ease). Adjust pattern if necessary. The measurement excludes pleats, tucks, darts and seam allowances.

SEAM ALLOWANCE: 5/8" (1.5cm) included unless otherwise indicated, but not printed on tissue.

ADJUST IF NECESSARY

Lengthen or Shorten at adjustment lines (==) or where indicated on pattern. If substantial length is added, you may need to purchase additional fabric.

TO SHORTEN: Crease along adjustment line. Make a fold half the amount needed. Tape in place.

TO LENGTHEN: Slash between adjustment lines. Spread amount as needed, keeping edges parallel. Tape over paper.

When Alteration lines are not on tissue, lengthen or shorten at lower edge.

CUTTING AND MARKING

SHRINK FABRIC if not labeled pre-shrunk. Press.

CIRCLE LAYOUT for View, Size, Fabric Width.

Use **WITH NAP** layout for fabrics with one-way designs, nap, pile or surface shading. Because most knits have surface shading, a with nap layout is used.

For **DOUBLE THICKNESS (WITH FOLD)** - fold fabric with right sides together.

***DOUBLE THICKNESS (WITHOUT FOLD)** - For fabrics with nap, fold fabric crosswise, right sides together. Mark as shown. Cut along crosswise fold of fabric (A). Turn upper layer 180° so arrows go in same direction and place over lower layer, right sides together (B).

For **SINGLE THICKNESS** - place fabric right side up. (For Fur Pile fabrics, place pile side down.)

★ Cut other pieces first, allowing enough fabric to cut this piece. Open fabric. For "Cut 1" pieces, cut piece once on single layer of fabric with piece face up on right side of fabric.

Pattern may have cutting lines for several sizes. Before **CUTTING** place all pieces on fabric according to layout. Pin. (Layouts show approximate position of pattern pieces; position may vary according to your pattern size.) Cut **ACCURATELY**, cutting notches outward.

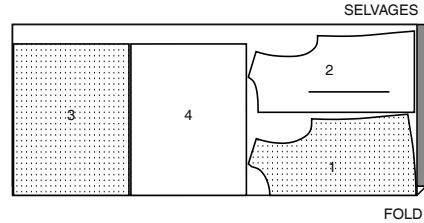
Before removing pattern, **TRANSFER MARKINGS** and lines of construction to Wrong Side of fabric, using the Pin and Chalk Pencil method or Tracing Paper and Dressmaker Wheel. Markings needed on right side of fabric should be traced there.

NOTE: Broken-line boxes (a! b! c!) in layouts represent pieces cut by measurements provided.

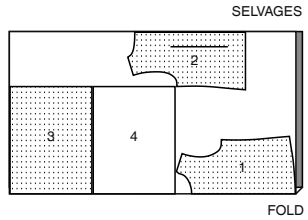
CUTTING LAYOUTS

DRESS A
USE PIECES 1 2 3 4

45" (115CM)
WITH NAP
ALL SIZES

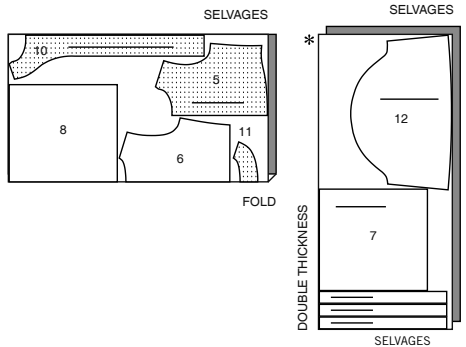


60" (150CM)
WITH NAP
ALL SIZES

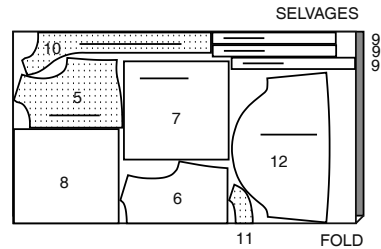


TOP B
USE PIECES 5 6 7 8 9 10 11 12

45" (115CM)
WITH NAP
ALL SIZES

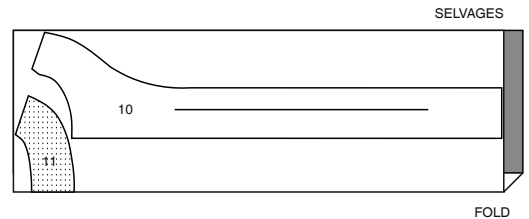


60" (150CM)
WITH NAP
ALL SIZES



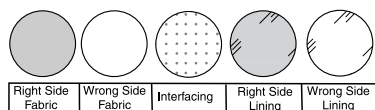
INTERFACING B
USE PIECES 10 11

20" (51CM)
ALL SIZES



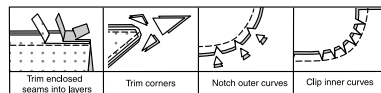
SEWING INFORMATION

FABRIC KEY



SEAM ALLOWANCES

Use 5/8" (1.5m) seam allowances unless otherwise indicated.



PIN AND FIT

Pin or baste seams, **RIGHT SIDE TOGETHER**, matching notches. Fit garment before stitching major seams.

PRESS

Press seam allowances flat; then open unless otherwise stated. Clip where necessary so they lie flat.

GLOSSARY

Sewing methods in **BOLD TYPE** have Sewing Tutorial Video available. Scan QR CODE to watch videos:

FINISH - See **Seams**: "how to finish seam allowances" video.

GATHER - See **Gathering**: "sewing two row gathers" video.

NARROW HEM - See **Hems**: "sewing narrow hems" video.

STAYSTITCH - See **Machine Stitches**: "how to do staystitching" video.

TACK - See **Hand-Stitching**: "how to tack" video.

TRIM - See **How to Sew: Trim, Clip, and Layer Seams** video.

UNDERSTITCH - See **Machine Stitches**: "how to understitch" video.

SEWING TUTORIALS



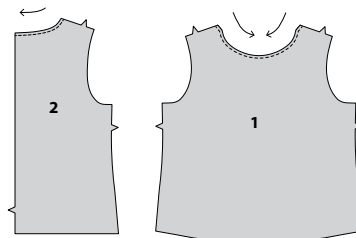
Build your skills viewing short, easy-to-follow videos at simplicity.com/sewingtutorials

PATTERN PIECES WILL BE IDENTIFIED BY NUMBERS THE FIRST TIME THEY ARE USED.
STITCH SEAMS WITH RIGHT SIDES TOGETHER UNLESS OTHERWISE STATED.

DRESS A

BODICE

1. STAYSTITCH neck edge of BODICE FRONT (1) and BODICE BACK (2) sections 1/4" (6mm) from raw edge in direction of arrows. Staystitching will not be shown in the following illustrations.

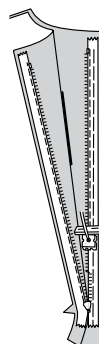


NOTE: *Stitch the invisible zipper using an invisible zipper foot. If the zipper is longer than the zipper opening, adjust after the zipper is inserted. For a How-to video, see ZIPPER: "sewing an invisible zipper".*

2. Open zipper and press tape using a cool iron. On **OUTSIDE**, pin **RIGHT** side of zipper face down on **RIGHT** side of zipper opening. Have the coil along the seam line, the tape within the seam allowance, and the top stop 3/4" (2cm) below upper edge, as shown. Hand-baste along center of tape. Position zipper foot at the top of zipper with **RIGHT** groove of foot over coil. Stitch along tape to notch. Back-stitch to reinforce.



3. Pin remaining half of zipper to **LEFT** side of zipper opening in same manner. Make sure that upper and lower edges of bodice are even. Hand-baste along center of tape. Position zipper foot at top of zipper with **LEFT** groove over coil. Stitch along tape to notch. Back-stitch to reinforce.



4. Close zipper and check that it is invisible from the **OUTSIDE**.

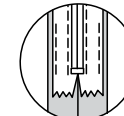
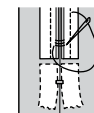
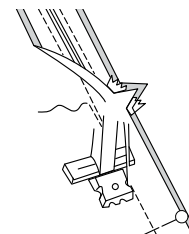
Pull free ends of zipper tape away from seam allowance.

Pin remaining center back seam together below zipper.

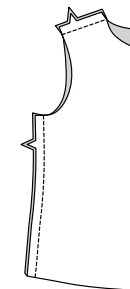
Position zipper foot all the way to the **LEFT** so the needle goes down through the outer notch of the foot. Start stitching remainder of center back seam 1/4" (6mm) above lowest stitch and slightly to the **LEFT**.

If the zipper is longer than the opening, using a strong thread, hand-sew a few small stitches across ends of coils at end of opening. Trim away lower end of zipper tape to within 5/8" (1.5cm) of hand-stitches.

If you prefer, open out each seam allowance at end of zipper and stitch tape to seam allowance.



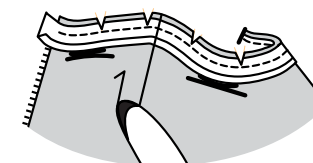
5. Stitch front to back at shoulders and sides.



NECK AND ARMHOLES

6. Open out one edge of single fold bias tape. With **RIGHT** sides together, pin tape to neck edge having raw edges even and tape extending 3/8" (1cm) beyond back opening edges, as shown. Stitch in a 3/8" (1cm) seam.

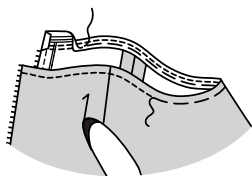
TRIM seam; clip curves.



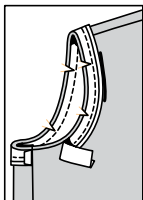
7. UNDERSTITCH by pressing tape and seam away from garment, stitching through tape and seam allowances close to seam.



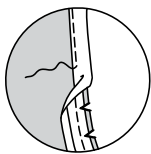
8. Turn tape to **INSIDE**, turning under ends at back opening. Press. Baste close to inner edge of tape, clearing zipper teeth. On **OUTSIDE**, stitch as basted.



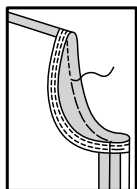
9. Open out one edge of single fold bias tape. With **RIGHT** sides together, pin tape to armhole edge having raw edges even, turning under and lapping one end at side seam. Stitch in $3/8"$ (1cm) seam. Trim seam; clip curves.



10. **UNDERSTITCH** armhole tape in same manner as for neck tape.

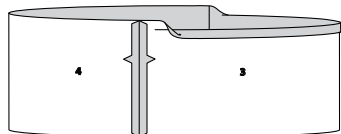


11. Turn tape to **INSIDE**; press. Baste close to inner edge of tape. On **OUTSIDE**, top-stitch as basted.

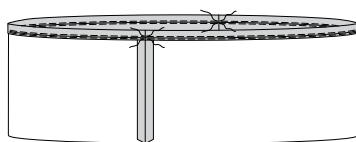


SKIRT

12. Stitch **SKIRT FRONT** (3) to **SKIRT BACK** (4) at sides. Turn upper edge of skirt to **INSIDE** along foldline; press.

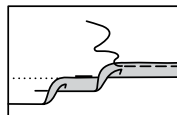


13. To gather upper edge, stitch $1/8"$ (3mm) on each side of gathering line, using a long machine-stitch and breaking stitches at side seams.

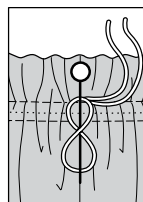
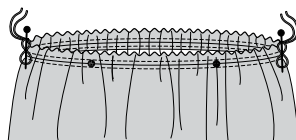


14. Press up $5/8"$ (1.5cm) on lower edge of skirt.

To form **NARROW HEM**, tuck under raw edge to meet crease; press. Stitch hem in place close to inner pressed edge.



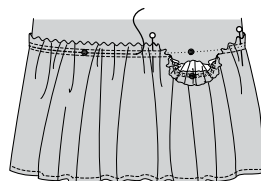
15. Pull up gathers to fit lower edge of top along seam line. Distribute fullness evenly. Wrap thread ends around a pin in a figure 8 to secure.



16. On **OUTSIDE**, lap skirt over lower edge of bodice, placing gathering line along $5/8"$ (1.5cm) seam line, matching centers, side seams, and large dots. Pin in place. Make further adjustments to gathers, if needed.

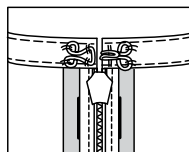
Stitch along gathering line.

Remove stitches on each side of gathering line when done.



FINISHING

17. Sew hook and eye to tape at back neck edges.

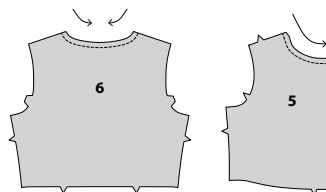


TOP B

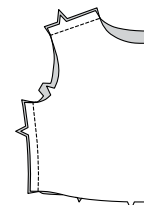
FRONT AND BACK

1. **STAYSTITCH** neck edge of **UPPER FRONT** (5) and **UPPER BACK** (6) sections $1/2"$ (1.3cm) from raw edge in direction of arrows.

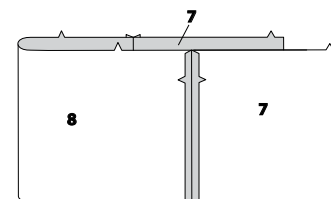
Staystitching will not be shown in the following illustrations.



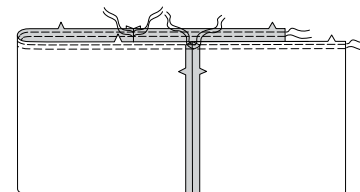
2. Stitch upper front to upper back at shoulders and sides.



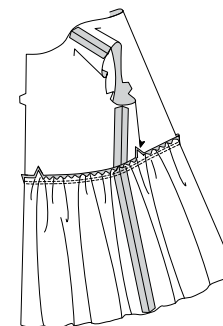
3. Stitch **LOWER FRONT** (7) sections to **LOWER BACK** (8) at sides. This section will now be referred to as the skirt.



4. To **GATHER** upper edge of skirt between front notches, on **OUTSIDE**, stitch along $5/8"$ (1.3cm) seam line and $1/4"$ (6mm) **INSIDE** seam line, using a long machine-stitch and breaking stitches at side seams.

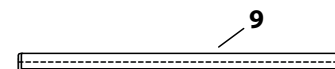


5. With **RIGHT** sides together and raw edges even, pin skirt to lower edge of top, matching centers, side seams, and notches. Pull up gathering stitches to fit. Stitch. Press seam toward bodice.



TIES

6. With **RIGHT** sides together, fold each **TIE END** (9) in half lengthwise, having raw edges even. Stitch in a $3/8"$ (1cm), leaving ends open.



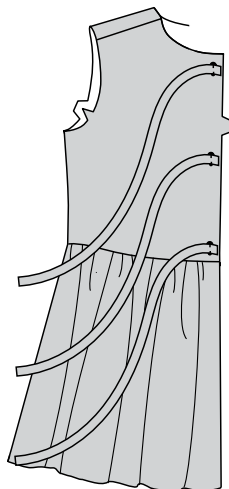
7. With a needle, attach a strong thread to one end of tie end. Draw needle eye forward, through fold, turning tie end **RIGHT** side out. Press.



8. Tuck in raw edge on one end of tie end. If you prefer, slipstitch opening closed. Baste across remaining raw edge.



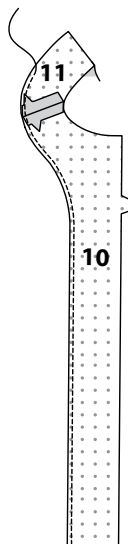
9. On OUTSIDE, pin ties to front edges of top matching small and large dots, having raw edges even. Baste in place.



FACING

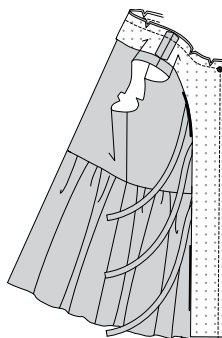
10. Apply fusible interfacing to WRONG side of FRONT FACING (10) and BACK FACING (11) sections, following manufacturer's directions. Stitch shoulder seams of sections.

To **FINISH** unnotched edge, stitch 1/4" (6mm) from edge, turn under along stitching and stitch, OR zigzag over the edge OR overlock/serge over the edge



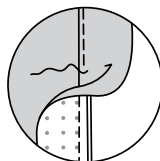
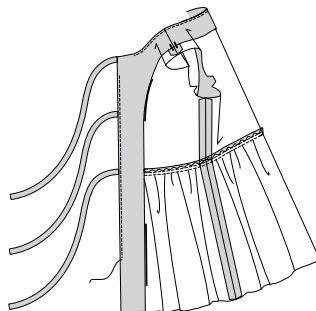
11. With RIGHT sides together, pin facing to front and neck edge, matching centers, shoulder seams, and large dots; stitch, pivoting at large dot.

TRIM seam and corners; clip curves.



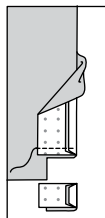
12. **UNDERSTITCH** facing to within 5" (13cm) of lower edges by pressing facing and seam away from top, stitching through facing and seam allowances close to seam as far as possible. Turn facing to INSIDE; press.

To keep the facing from rolling to OUTSIDE, **TACK** it to shoulder seams by hand.



13. Turn facing to OUTSIDE. Stitch across facing exactly 2" (5 cm) above lower edge. Trim facing close to stitching.

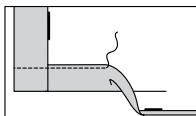
Trim top to within 5/8" (1.5cm) of inner edge of facing.



14. Turn facing to INSIDE; press, pressing up 2" (5cm) hem allowance.

Press under 1/4" (6mm) on inner raw edge.

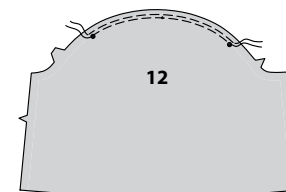
Stitch hem in place close to inner pressed edge, starting at opening edge.



SLEEVE

NOTE: FOR How-to video, see Armholes/Sleeves: "sewing a set-in sleeve".

15. **GATHER** upper edge of each SLEEVE (12) between outer small dots in same manner as for skirt.

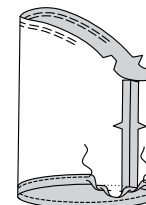


16. Stitch underarm seam.

Press 3/4" (2cm) on lower edge of sleeve to INSIDE.

Press under 1/4" (6mm) on inner raw edge, forming casing.

Stitch close to inner edge of casing, leaving an opening to insert elastic.



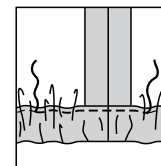
17. For each sleeve, cut one piece of elastic the length of GUIDE FOR ELASTIC (13). Overlap ends 5/8" (1.5cm) on each side of center.

Stitch ends of elastic together securely.



18. Stitch opening closed.

Distribute fullness evenly.



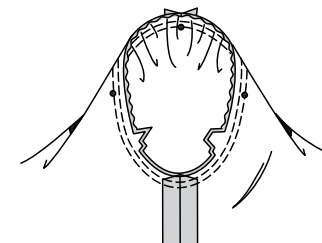
19. Turn sleeve RIGHT side out.

Hold top WRONG side out with armhole toward you.

With RIGHT sides together, pin sleeve to armhole edge with center small dot at shoulder seam, matching underarm seams, notches and remaining small dots. Pull up gathering stitches to fit. To distribute fullness evenly, slide fabric along bobbin threads. Baste. Stitch. Stitch again 1/8" (3mm) from first stitching.

Trim seam below notches close to stitching.

Press only the seam allowance; turn toward sleeve.





Congrats!

You've completed your sewing adventure

SHARE YOUR LOOK



Post your pattern and tag us using [#simplicitypatterns](#)
[@simplicity_creative_group](#)
[@simplicitymccallsuk](#)
[@simplicitymccallsaustralia](#)
for a chance to be featured on our social media.

Look for more PDF patterns at [simplicity.com](#) or for customers outside the U.S. and Canada visit [sewdirect.com](#) and [sewdirect.com.au](#)

Have a question or need help with your sewing project contact us:
[Simplicity.com](#) [Sewdirect.com](#) [Sewdirect.com.au](#)

McCall's
by **design**_{group}

McCall's ©2025 a division of IG Design Group Americas Inc. • Atlanta, GA 30342 USA [www.thedesigngroup.com](#) • All Rights Reserved. [www.mccall.com](#) • Made in the U.S.A. Fabriqué aux États-Unis.
To be used for individual private home use only and not for commercial or manufacturing purposes. • A usage privé seulement et non à des fins commerciales ou de production en série. • Para uso privado solamente, no se puede utilizar con propósitos de comercialización o de producción en serie.