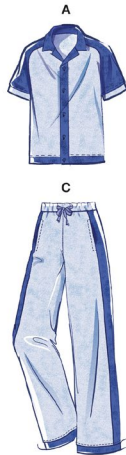


McCall's

M8590



Designed and printed in USA

This sewing pattern includes multiple view options with simple instructions. Show your make!
Ce patron de couture comprend plusieurs modèles avec des instructions faciles! Montrez votre réalisation!

Average

MEN'S TOP, SHORTS AND PANTS

Suggested Fabrics: A,B,C in Stretch Knits only such as: Double Knit, Ponte, Sweatshirt Fleece, Terry Cloth, Terry Knit. See Stretch Gauge. **Interfacing:** Lightweight Fusible.

Notions: A: Five 5/8" (1.5cm) buttons. B,C: 1 1/4 yds. (1.2m) of 1 1/2" (4cm) elastic, 2 yds. (1.8m) of 1/2" (1.3cm) twill tape (optional).

Sizes	S	M	L	XL	XXL
	(34-36)	(38-40)	(42-44)	(46-48)	(50-52)
European	34-36	38-40	42-44	46-48	50-52

BODY MEASUREMENTS: Select pattern size based on body measurements

Bust/ Chest	34-36	38-40	42-44	46-48	50-52	Ins.
Waist	28-30	32-34	36-39	42-44	46-48	"
Hip	35-37	39-41	43-45	47-49	51-53	"
Top A	60"*	1	1	1 1/2	1 1/2	Yds.
Contrast (Sleeve, Lower Front and Back Band, Front Band and Self Facing, Collar)	60"*	1	1	1	1 1/2	Yds.
Interfacing	20"	7/8	1	1	1	"
Shorts B	60"*	1	1	1	1 1/4	Yds.
Contrast (Leg Band, Side Panel) - 60"* - 5/8 yd.						
Pants C	60"*	1 1/2	1 1/2	1 1/2	2 1/4	Yds.
Contrast (Leg Band, Side Panel)	60"*	1 1/4	1 1/4	1 1/4	1 3/8	Yds.

NOTE: Please refer to the sewing instructions for **FINISHED GARMENT MEASUREMENTS**.

*with nap **without nap

Moins Facile

HAUT, SHORT ET PANTALON POUR HOMMES

Tissus Conseillés: A,B,C en tricot extensibles seulement tels que: Tricot double, Ponte, Jersey molletonné pour sweat-shirt, Tissue éponge, tricot éponge. Reportez-vous au taux d'élasticité.

Entoilage: Thermocollant léger.

Mercerie: A: 5 boutons de 1.5cm. B,C: 1.2m d'élastique de 4cm, 1.8m de talonnette de coton de 1.3cm (facultatif).

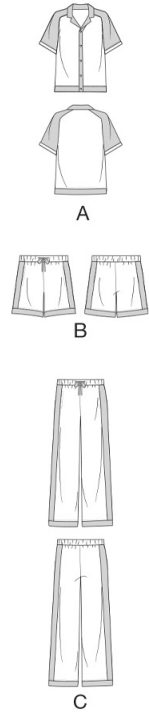
Tailles	P/S	M/M	G	TG/XL	TTG/XXL
Françaises	36-38	40-42	44-46	48-50	52-54
Européen	34-36	38-40	42-44	46-48	50-52

MESURES DU CORPS: Choisissez la taille du patron basée sur les mesures du corps

Poitrine	87-92	97-102	107-112	117-122	127-132	cm
Taille	71-76	81-87	92-99	107-112	117-122	"
Hanches	89-94	99-104	109-115	119-124	128-135	"
Haut A	150cm*	0.9	0.9	0.9	1.0	1.0 m
Contrast (Manche, bande inférieure devant et dos, bande devant et auto-parementure, col)	150cm*	0.9	0.9	0.9	0.9	1.0 m
Entoilage	51cm	0.8	0.8	0.9	0.9	"
Short B	150cm*	0.9	0.9	0.9	0.9	1.1 m
Contraste (Bande de la jambe, panneau latéral) - 150cm* - 0.6m						
Pantalon C	150cm*	1.5	1.5	1.5	1.5	1.9 m
Contraste (Bande de la jambe, panneau latéral)	150cm*	1.1	1.1	1.1	1.1	1.3 m

NOTE: S'il vous plaît, reportez-vous aux instructions de couture pour les **MESURES DU VÊTEMENTS FINI**.

*avec sens **sans sens



Use the 1 inch (2.54cm) box to ensure you are using rule at 100%

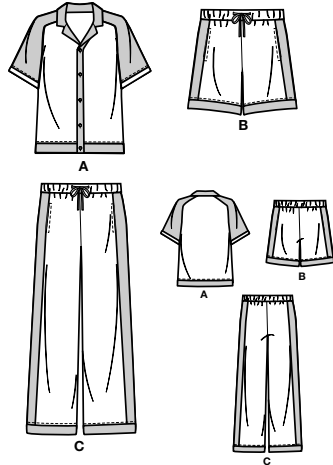
Utilisez la boîte de 2.54 cm pour vous assurer d'utiliser la règle à 100%.

Utilizar un cuadrado de 2.54 cm para asegurarse de estar usando la regla al 100%.

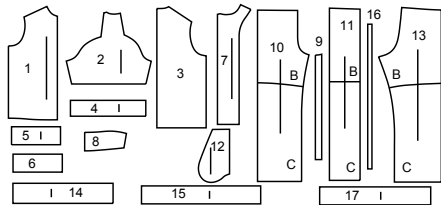
4" of crosswise folded fabric must **STRETCH** from here
10 cm de tricot plié sur le travers et sur le droit-fil doivent s'étirer de cette limite à celle là
10 cm de tejido de punto doblado (a lo largo y luego al través) deben estirarse desde acá

To Here 35%
jusqu'ici 35%
hasta acá 35%

When using the Pick-A-Knit® rule to measure your fabrics stretch capacity, rule must be viewed or printed at 100%.
Quand vous utilisez le taux d'élasticité pour mesurer la capacité d'élasticité des tissus, le taux doit être visible ou imprimé à 100%.
Al utilizar el calibre de elasticidad para medir la capacidad de elasticidad de las telas, el calibre debe estar visible o impreso al 100%.



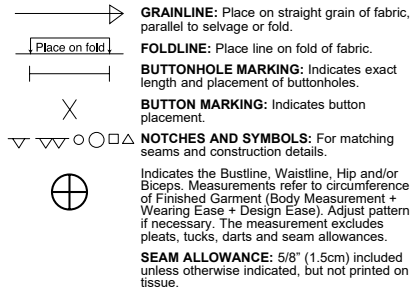
17 PATTERN PIECES



- 1 Front-A
- 2 Sleeve-A
- 3 Back-A
- 4 Sleeve Band-A
- 5 Lower Front Band-A
- 6 Lower Back Band-A
- 7 Front Band and Self Facing-A
- 8 Collar-A
- 9 Buttonhole Guide-A
- 10 Front-B,C
- 11 Side Panel-B,C
- 12 Pocket-B,C
- 13 Back-B,C
- 14 Casing-B,C
- 15 Leg Band-B
- 16 Elastic Guide for Waist-B,C
- 17 Leg Band-C

Sizes	S	M	L	XL	XXL
European	(34-36)	(38-40)	(42-44)	(46-48)	(50-52)
	34-36	38-40	42-44	46-48	50-52
FINISHED GARMENT MEASUREMENTS (Includes Design and Wearing Ease)					
A Chest	40	44	48	52	56
B,C Hip	43	47	51	55	59
Width, lower edge					
Top A	40%	44%	48%	52%	56%
Width, each leg					Ins.
Shorts B	26	27	28	29	30
Pants C	24	25	26	27	28
Finished back length from base of neck					
Top A (incl. band)	27 1/2	28	28 1/2	29	29 1/2
Finished side length from waist (Views B,C sit 1" below waist)					
Shorts B (incl. leg band)	19%	20%	20%	21%	21%
Pants C (incl. leg band)	43%	43%	44%	44%	45%

PATTERN MARKINGS



ADJUST IF NECESSARY

Lengthen or Shorten at adjustment lines (==) or where indicated on pattern. If substantial length is added, you may need to purchase additional fabric.

TO SHORTEN: Crease along adjustment line. Make a fold half the amount needed. Tape in place.

TO LENGTHEN: Slash between adjustment lines. Spread amount as needed, keeping edges parallel. Tape over paper.

When Alteration lines are not on tissue, lengthen or shorten at lower edge.

CUTTING AND MARKING

SHRINK FABRIC if not labeled pre-shrunk. Press.

CIRCLE LAYOUT for View, Size, Fabric Width. Use **WITH NAP** layout for fabrics with one-way designs, nap, pile or surface shading. Because most knits have surface shading, a with nap layout is used.

For **DOUBLE THICKNESS (WITH FOLD)** - fold fabric with right sides together.

*** DOUBLE THICKNESS (WITHOUT FOLD)** - For fabrics with nap, fold fabric crosswise, right sides together. Mark as shown. Cut along crosswise fold of fabric (A). Turn upper layer 180° so arrows go in same direction and place over lower layer, right sides together (B).

For **SINGLE THICKNESS** - place fabric right side up. (For Fur Pile fabrics, place pile side down.)

★ Cut other pieces first, allowing enough fabric to cut this piece. Open fabric. For "Cut 1" pieces, cut piece once on single layer of fabric with piece face up on right side of fabric.

Pattern may have cutting lines for several sizes. Select the proper cutting line or pattern pieces for your size.

Before **CUTTING** place all pieces on fabric according to layout. Pin. (Layouts show approximate position of pattern pieces; position may vary according to your pattern size.) Cut **ACCURATELY**, cutting notches outward.

Before removing pattern, **TRANSFER MARKINGS** and lines of construction to Wrong Side of fabric, using the Pin and Chalk Pencil method or Tracing Paper and Dressmaker Wheel. Markings needed on right side of fabric should be thread traced.

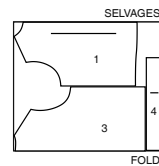
NOTE: Broken-line boxes (a|b|c) in layouts represent pieces cut by measurements provided.

CUTTING LAYOUTS

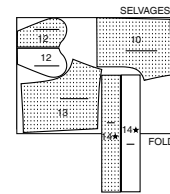
TOP A

USE PIECES 1 3 4

60" (150CM)
WITH NAP
ALL SIZES



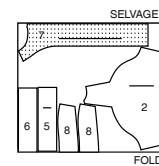
60" (150CM)
WITH NAP
SIZE XXL



CONTRAST A

USE PIECES 2 5 6 7 8

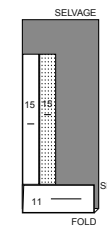
60" (150CM)
WITH NAP
ALL SIZES



CONTRAST B

USE PIECES 11 15

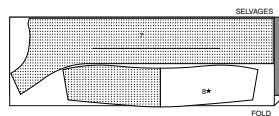
60" (150CM)
WITH NAP
ALL SIZES



INTERFACING

USE PIECES 7 8

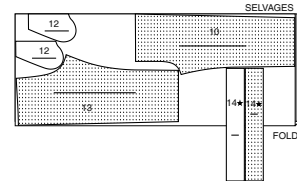
20" (51CM)
WITHOUT NAP
ALL SIZES



PANTS C

USE PIECES 10 12 13 14

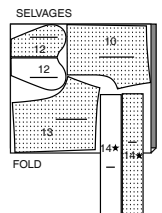
60" (150CM)
WITH NAP
ALL SIZES



SHORTS B

USE PIECES 10 12 13 14

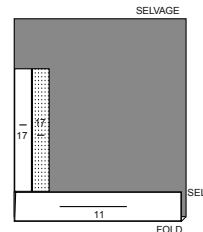
60" (150CM)
WITH NAP
SIZES S M L XL



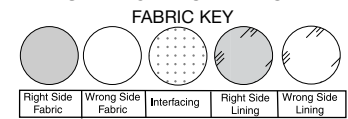
CONTRAST C

USE PIECES 11 17

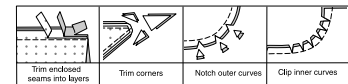
60" (150CM)
WITH NAP
ALL SIZES



SEWING INFORMATION



SEAM ALLOWANCES
Use 5/8" (1.5cm) seam allowances unless otherwise indicated.



PIN AND FIT

Pin or baste seams, **RIGHT SIDE TOGETHER**, matching notches. Fit garment before stitching major seams.

PRESS

Press seam allowances flat; then open unless otherwise stated. Clip where necessary so they lie flat.

GLOSSARY

Sewing methods in **BOLD TYPE** have Sewing Tutorial Video available. Scan **QR CODE** to watch videos:

- SLIPSTITCH** - See **Hand Stitching: "how to slip stitch"** video.
- STITCH IN THE DITCH** - See **Machine Stitches: "how to stitch in the ditch"** video.
- TOPSTITCH** - See **Machine Stitches: "how to topstitch"** video.
- TRIM SEAM** - See **Seams: "how to trim, clip and layer seams"** video.
- UNDERSTITCH** - See **Machine Stitches: "how to understitch"** video.

SEWING TUTORIALS



Build your skills viewing short, easy-to-follow videos at simplicity.com/sewingtutorials

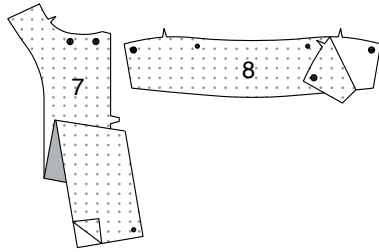
PATTERN PIECES WILL BE IDENTIFIED BY NUMBERS THE FIRST TIME THEY ARE USED.

STITCH 5/8" (1.5CM) SEAMS WITH RIGHT SIDES TOGETHER UNLESS OTHERWISE STATED.

TOP A

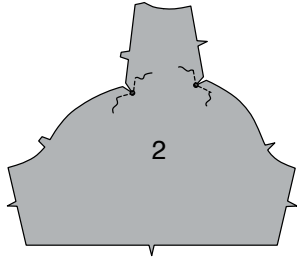
INTERFACING

1. Pin interfacing to WRONG side of FRONT BAND AND SELF FACING (7) and COLLAR (8). Fuse in place following manufacturer's directions.

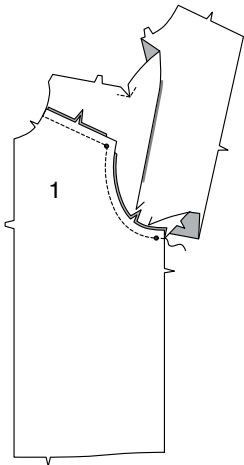


FRONT, BACK, AND SLEEVE

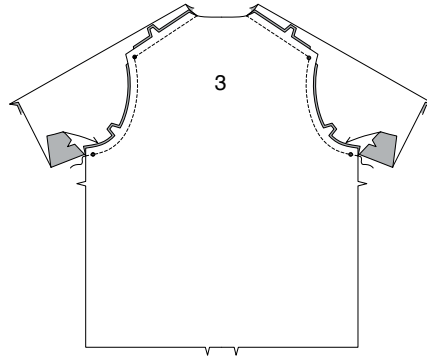
2. To reinforce inner corners of SLEEVE (2) at small dots, stitch along seam line for about 1" (2.5cm) each side of small dots, stitching through dots, as shown. Clip to stitching at dots.



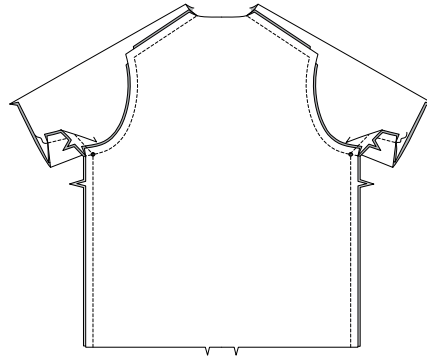
3. With RIGHT sides together and raw edges even, pin sleeve to FRONT (1), matching small dots and notches. Stitch armhole and shoulder edges, pivoting with needle in fabric at inner small dot. Press seam toward shoulder and sleeve.



4. With RIGHT sides together and raw edges even, pin sleeve to BACK (3), matching small dots and notches. Stitch armhole and shoulder edges, pivoting with needle in fabric at inner small dot. Press seam toward shoulder and sleeve.

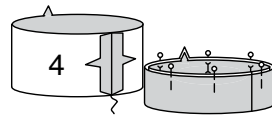


5. Stitch front to back at entire underarm seam, matching armhole seams. Press seam open.

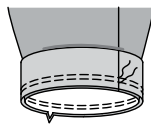


SLEEVE BAND

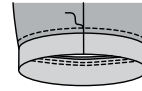
6. With RIGHT sides together, stitch ends of SLEEVE BAND (4). Fold sleeve band in half, lengthwise, with WRONG sides together; press. Pin.



7. On OUTSIDE, pin band to sleeve, matching seams and notches, with raw edges even. Stitch. Stitch again 1/8" (3mm) from first stitching within the seam allowance. Press seam toward sleeve, pressing band out.

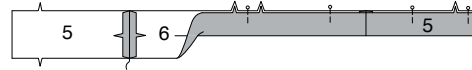


8. On OUTSIDE, TOPSTITCH sleeve 1/4" (6mm) from seam.

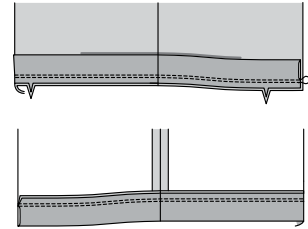


LOWER BAND

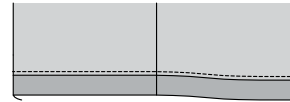
9. With RIGHT sides together, stitch ends of LOWER FRONT BAND (5) sections to LOWER BACK BAND (6). Fold band in half, lengthwise, with WRONG sides together; press. Pin.



10. On OUTSIDE, pin band to top, matching seams and notches, with raw edges even. Stitch. Stitch again 1/8" (3mm) from first stitching within the seam allowance. Press seam toward top, pressing band out.

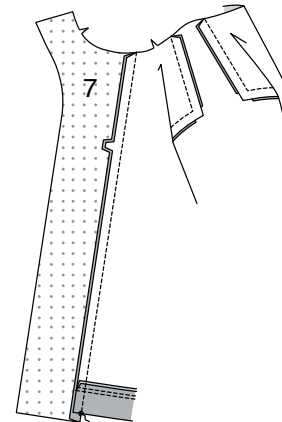


11. On OUTSIDE, TOPSTITCH top 1/4" (6mm) from seam.



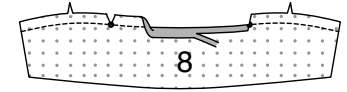
FRONT BAND, COLLAR, AND FACING

12. With RIGHT sides together and raw edges even, pin FRONT BAND AND SELF FACING (7) sections to front, matching small dots and notches. Stitch. Press seam toward band, pressing band out. (Lower edge of front band extends 5/8" (1.5cm) below lower edge of lower band.)

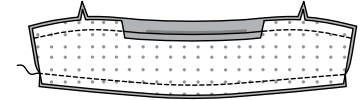


13. Machine-stitch 5/8" (1.5cm) from notched edge of COLLAR (8). Clip notched edge of collar to stitching at small dots.

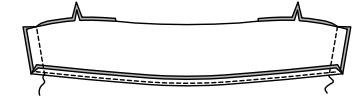
Press under 5/8" (1.5cm) on raw edge between clips. Trim to 1/4" (6mm).



14. With RIGHT sides together, stitch collar facing to collar along unnotched, long edge.

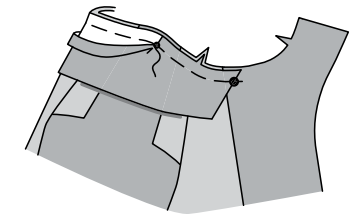


15. UNDERSTITCH the collar facing. Stitch facing to collar at ends. TRIM SEAM.

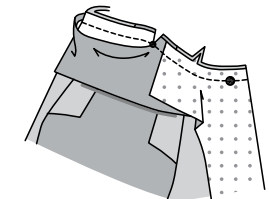


16. Turn collar; press. On OUTSIDE, pin collar (facing side) to neck edge, matching centers and large dots, and small dot at shoulder. Baste both collar and collar facing sections to front neck edge as far as small dot.

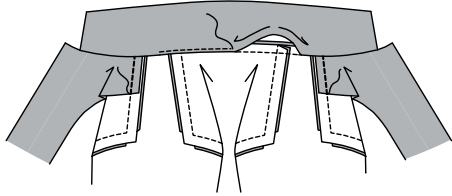
Baste only the collar facing section to remaining neck edge between small dots.



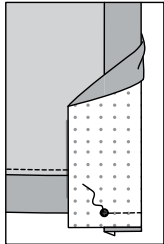
17. Fold front facing to OUTSIDE along foldline. With RIGHT sides together, pin front facing to neck edge of top (over collar), matching large dots and notches. Baste. Stitch front band and neck edge as basted, being careful not to catch in free edge of collar. Clip neck edge of garment at small dot.



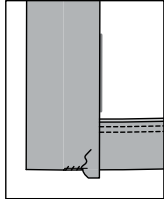
18. Turn facing to **INSIDE**, turning back neck seam toward collar; press. Stitch pressed edge of collar over neck seam. To keep facing in place, machine-stitch end of facing to shoulder seam allowance only, as shown.



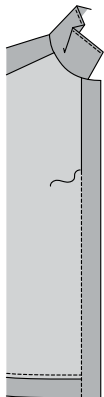
19. Turn lower edge of facing to **OUTSIDE** along foldline. Stitch across lower edge from fold to small dot at seamline.



20. Turn facing to **INSIDE**; press, pressing under remaining lower edge of facing. **SLIPSTITCH** facing to lower edge of lower band.

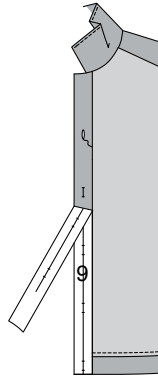


21. On **OUTSIDE**, **STITCH IN THE DITCH** of front band seam from lower edge to 7" (18cm) below neck seam.



FINISHING

22. To mark buttonholes in **LEFT** front, place **BUTTONHOLE GUIDE** (9) along finished edge of garment, matching centers, as shown. Transfer buttonhole markings. Make buttonholes at markings. Lap **LEFT** front over **RIGHT**, matching centers. Sew buttons under buttonholes.



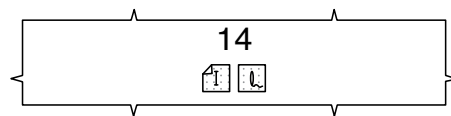
SHORTS B; PANTS C

NOTE: Shorts B and Pants C are designed to be worn 1" below waist.

FOR OPTIONAL DRAWSTRING

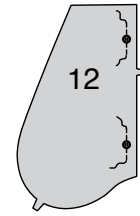
1. To reinforce **CASING** (14) at buttonhole markings (for optional drawstring), cut two 1-1/2" (3.8cm) squares of fusible interfacing from a remnant. Pin interfacing squares to **WRONG** side of casing over buttonhole markings. Fuse in place following manufacturer's directions.

Make buttonholes in casing at markings.

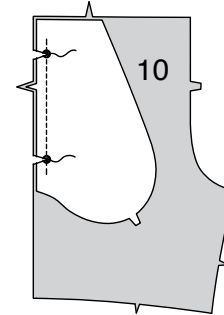


FRONT AND BACK

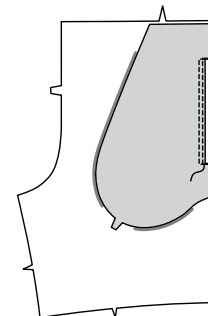
2. To reinforce **POCKET** (12) facing at large dots, stitch along seam line for about 1" (2.5cm) each side of dots, stitching through dots, as shown.



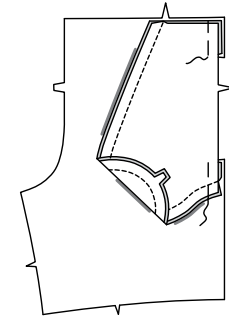
3. With right sides together, pin pocket to **FRONT** (10), matching large dots, having raw edges even. Stitch between large dots, back-stitching at dots to reinforce the seam. Clip to stitching at dots. **TRIM SEAM.**



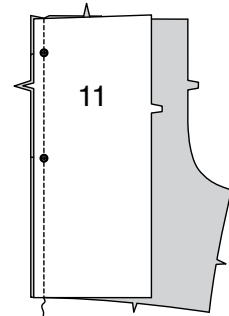
4. **UNDERSTITCH** the pocket. Turn pocket to inside; press, pressing out remaining seam allowance. **TOPSTITCH** 1/4" (6mm) from finished edge of pocket, squaring stitching at opening ends.



5. With right sides together and raw edges even, pin pocket to pocket facing, matching notches. Stitch long curved edge. Baste raw edges together.

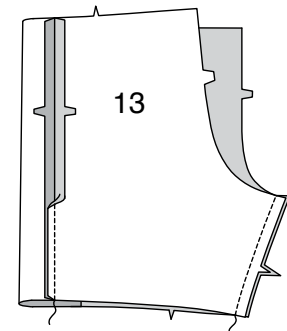


6. Pin front to **SIDE PANEL** (11) at side front edges, matching large dots and notches. Stitch, being careful not to catch in edge of front pocket.

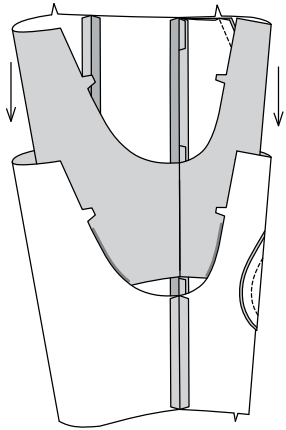


7. With **RIGHT** sides together and raw edges even, pin side panel to **BACK** (13), matching notches. Stitch.

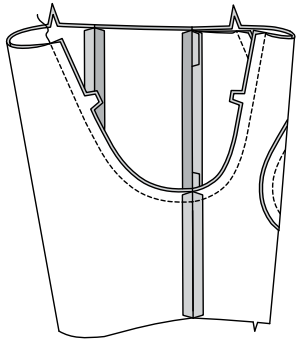
Stitch front to back at inner leg edges.



8. With RIGHT sides together, insert one leg INSIDE the other.

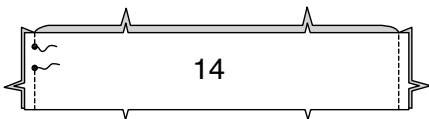


9. With RIGHT sides together, pin center seam, matching inner leg seams and notches. Stitch. To reinforce seam, stitch again over first stitching.

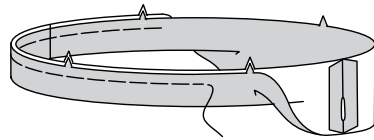


CASING

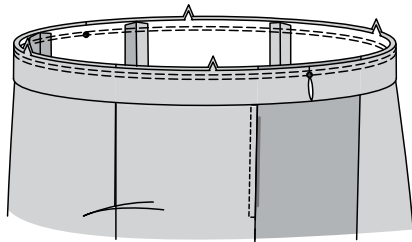
10. With RIGHT sides together, stitch side seams of CASING (14), leaving an opening in LEFT side seam between small dots, as shown. Back-stitch at small dots to reinforce seam.



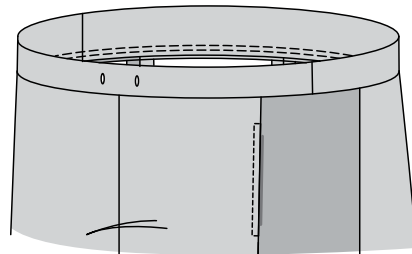
11. Fold casing in half, lengthwise, with WRONG sides together, having raw edges even. Baste raw edges together. The side with the opening is the UNDERSIDE of the casing.



12. With the UNDERSIDE of casing facing out, pin casing to garment, matching centers and placing small dots at side seams. Stitch along seam line. Stitch again 1/4" (6mm) from first stitching within seam allowance.

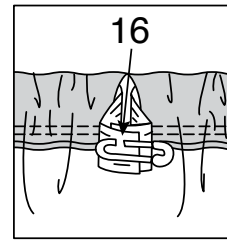


13. Press seam toward garment, pressing casing out.

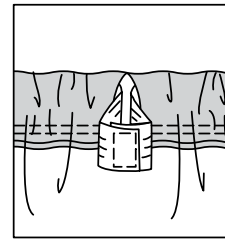


14. Cut a piece of elastic the length of ELASTIC GUIDE FOR WAIST (16).

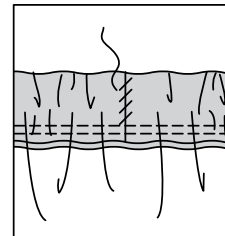
Insert elastic through opening in casing. Overlap ends and hold with a safety pin. Try on garment and adjust to fit.



15. Stitch ends of elastic together securely.

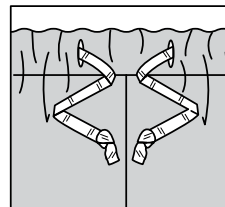


16. SLIPSTITCH opening edges of casing together. Distribute fullness evenly.



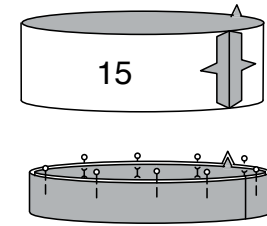
17. FOR OPTIONAL DRAWSTRING -

Attach a safety pin to one end of twill tape drawstring. Insert pin and drawstring through one buttonhole opening in front casing. Work drawstring through entire casing and out through remaining buttonhole, having ends extend evenly in the front. Trim ends as desired. Knot ends of drawstring. Fasten into a bow when wearing.

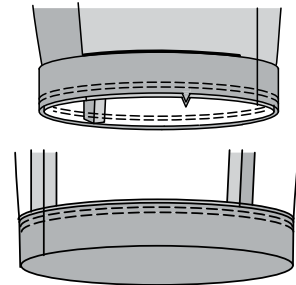


LEG BAND

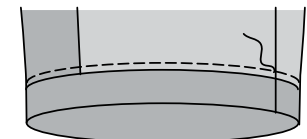
18. With RIGHT sides together, stitch ends of LEG BAND (15) for View B, OR (17) for View C. Fold leg band in half, lengthwise, with WRONG sides together; press. Pin.



19. On OUTSIDE, pin band to lower edge of leg, matching inner leg seams and notches, with raw edges even. Stitch. Stitch again 1/8" (3mm) from first stitching within the seam allowance. Press seam toward leg, pressing band out.



20. On OUTSIDE, TOPSTITCH leg 1/4" (6mm) from seam.





Congrats!

You've completed your sewing adventure

SHARE YOUR LOOK



Post your pattern and tag us using [#simplicitypatterns](#)
[@simplicity_creative_group](#)
[@simplicitymccallsuk](#)
[@simplicitymccallsaustralia](#)
for a chance to be featured on our social media.

Look for more PDF patterns at [simplicity.com](#) or for customers outside the U.S. and Canada visit [sewdirect.com](#) and [sewdirect.com.au](#)

Have a question or need help with your sewing project contact us:
[Simplicity.com](#) [Sewdirect.com](#) [Sewdirect.com.au](#)

McCall's
by **design**_{group}

McCall's ©2025 a division of IG Design Group Americas Inc. • Atlanta, GA 30342 USA [www.thedesigngroup.com](#) • All Rights Reserved. [www.mccall.com](#) • Made in the U.S.A. Fabriqué aux États-Unis.
To be used for individual private home use only and not for commercial or manufacturing purposes. • A usage privé seulement et non à des fins commerciales ou de production en série. • Para uso privado solamente, no se puede utilizar con propósitos de comercialización o de producción en serie.