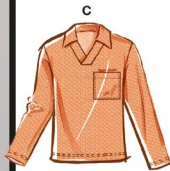


McCall's

M8589



Designed and printed in USA

This sewing pattern includes multiple view options with simple instructions. Show your maker! Ce patron de couture comprend plusieurs modèles avec des instructions faciles! Montrez votre réalisation!

Average

**MEN'S TOP WITH SLEEVE VARIATIONS**

**Suggested Fabrics:** A, B, C in Stretch Knits only such as: Bamboo, Cotton Knit, Interlock, ITY, Jersey, Rib Knit, Vertical Stripe Knits. See Stretch Gauge.

Sizes	S	M	L	XL	XXL	XXXL
	(34-36)	(38-40)	(42-44)	(46-48)	(50-52)	(54-56)
European	34-36	38-40	42-44	46-48	50-52	54-56

**BODY MEASUREMENTS: Select pattern size based on body measurements**

Bust/ Chest	34-36	38-40	42-44	46-48	50-52	54-56	Ins.
Waist	28-30	32-34	36-39	42-44	46-48	50-52	"
Hip	35-37	39-41	43-45	47-49	51-53	55-57	"

**Interfacing A, B, C**

20"	7/8	1	1	1	1 1/8	1 1/8	Yds.
-----	-----	---	---	---	-------	-------	------

Top A	60**	1 3/8	1 3/8	1 1/2	1 3/4	1 7/8	1 7/8	Yds.
-------	------	-------	-------	-------	-------	-------	-------	------

Top B	60**	1 1/4	1 1/4	1 1/4	1 3/8	1 3/8	1 7/8	Yds.
-------	------	-------	-------	-------	-------	-------	-------	------

**Contrast (Pocket, Neckband, Collar)**

60**	7/8	1	1	1	1 1/8	1 1/8	Yds.
------	-----	---	---	---	-------	-------	------

Top C	60**	1 3/4	1 3/4	1 3/4	1 7/8	2	2 1/8	Yds.
-------	------	-------	-------	-------	-------	---	-------	------

**FINISHED GARMENT MEASUREMENTS (Includes Design and Wearing Ease)**

A, B, C Chest	38 1/2	42 1/2	46 1/2	50 1/2	54 1/2	58 1/2	Ins.
---------------	--------	--------	--------	--------	--------	--------	------

A, B, C Waist	37 1/2	41 1/2	45 1/2	49 1/2	53 1/2	57 1/2	"
---------------	--------	--------	--------	--------	--------	--------	---

**Width, lower edge**

Top A, B, C	38 3/4	42 3/4	46 3/4	50 3/4	54 3/4	58 3/4	Ins.
-------------	--------	--------	--------	--------	--------	--------	------

**Finished back length from base of neck**

Top A, B, C	25	25 1/2	26	26 1/2	27	27 1/2	Ins.
-------------	----	--------	----	--------	----	--------	------

\*with nap \*\*without nap

Moins Facile

**HAUT AVEC VARIATIONS DE MANCHE POUR HOMMES**

**Tissus Conseillés:** A, B, C en tricot extensibles seulement tels que: Tricot Bambou, Tricot de coton, Interlock, Tricot interlock en fil retors, Jersey, Tricot à côtes, Tricot à rayures verticales. Reportez-vous au taux d'élasticité.

Tailles	P/S	M/M	G/L	TG/XL	TTG/XXL	TTTG/XXXL
Françaises	36-38	40-42	44-46	48-50	52-54	56-58
Européen	34-36	38-40	42-44	46-48	50-52	54-56

**MESURES DU CORPS: Choisissez la taille du patron basée sur les mesures du corps**

Poitrine	87-92	97-102	107-112	117-122	127-132	137-142	cm
Taille	71-76	81-87	92-99	107-112	117-122	127-132	"
Hanches	89-94	99-104	109-115	119-124	128-135	140-145	"

**Entoilage A, B, C**

51cm	0.8	0.8	0.9	0.9	0.9	1.0	m
------	-----	-----	-----	-----	-----	-----	---

Haut A	150cm*	1.3	1.3	1.4	1.6	1.7	1.7	m
--------	--------	-----	-----	-----	-----	-----	-----	---

Haut B	150cm*	1.1	1.1	1.1	1.1	1.3	1.7	m
--------	--------	-----	-----	-----	-----	-----	-----	---

**Contraste (Poche, Bande d'encolure, Col)**

150cm*	0.8	0.8	0.9	0.9	0.9	1.0	m
--------	-----	-----	-----	-----	-----	-----	---

Haut C	150cm*	1.6	1.6	1.6	1.7	1.8	1.9	m
--------	--------	-----	-----	-----	-----	-----	-----	---

**MESURES DES VÊTEMENTS FINI (Motif et aisance de port compris)**

A, B, C Poitrine	98	108	118	128	138	149	cm
------------------	----	-----	-----	-----	-----	-----	----

A, B, C Taille	95	105	116	126	136	146	"
----------------	----	-----	-----	-----	-----	-----	---

**Largeur à l'ourlet**

Haut A, B, C	98	109	119	129	139	149	cm
--------------	----	-----	-----	-----	-----	-----	----

**Longueur finie – dos, votre nuque à l'ourlet**

Haut A, B, C	64	65	66	67	69	70	cm
--------------	----	----	----	----	----	----	----

\*avec sens \*\*sans sens



Use the 1 inch (2.54cm) box to ensure you are using rule at 100%

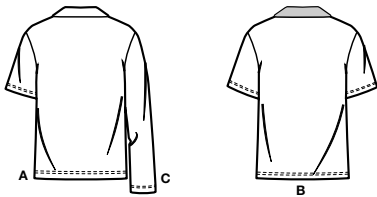
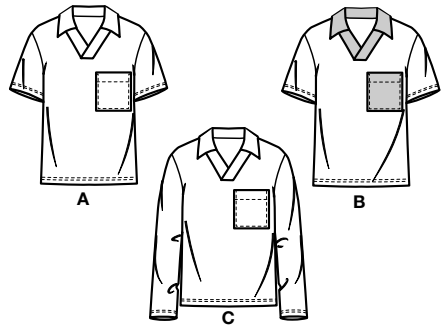
Utilisez la boîte de 2,54 cm pour vous assurer d'utiliser la règle à 100%.

Utilizar un cuadrado de 2.54 cm para asegurarse de estar usando la regla al 100%.

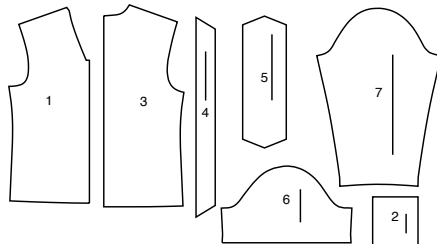
4" of crosswise folded fabric must **STRETCH** from here  
10 cm de tricot plié sur le travers et sur le droit-fil doivent s'étirer de cette limite à celle là  
10 cm de tejido de punto doblado (a lo largo y luego al través) deben estirarse desde acá

To Here 50%  
jusqu'ici 50%  
hasta acá 50%

When using the Pick-A-Knit® rule to measure your fabrics stretch capacity, rule must be viewed or printed at 100%.  
Quand vous utilisez le taux d'élasticité pour mesurer la capacité d'élasticité des tissus, le taux doit être visible ou imprimé à 100%.  
Al utilizar el calibre de elasticidad para medir la capacidad de elasticidad de las telas, el calibre debe estar visible o impreso a 100%.



7 PATTERN PIECES



- 1 Front-A,B,C
- 2 Pocket-A,B,C
- 3 Back-A,B,C
- 4 Neckband-A,B,C
- 5 Collar-A,B,C
- 6 Sleeve-A,B
- 7 Sleeve-C

**PATTERN MARKINGS**

**GRAINLINE:** Place on straight grain of fabric, parallel to selvage or fold.

**FOLDLINE:** Place line on fold of fabric.

**BUTTONHOLE MARKING:** Indicates exact length and placement of buttonholes.

**BUTTON MARKING:** Indicates button placement.

**NOTCHES AND SYMBOLS:** For matching seams and construction details.

Indicates the Bustline, Waistline, Hip and/or Biceps. Measurements refer to circumference of Finished Garment (Body Measurement + Wearing Ease + Design Ease). Adjust pattern if necessary. The measurement excludes pleats, tucks, darts and seam allowances.

**SEAM ALLOWANCE:** 5/8" (1.5cm) included unless otherwise indicated, but not printed on tissue.

**ADJUST IF NECESSARY**

Lengthen or Shorten at adjustment lines (==) or where indicated on pattern. If substantial length is added, you may need to purchase additional fabric.

**TO SHORTEN:** Crease along adjustment line. Make a fold half the amount needed. Tape in place.

**TO LENGTHEN:** Slash between adjustment lines. Spread amount as needed, keeping edges parallel. Tape over paper.

When Alteration lines are not on tissue, lengthen or shorten at lower edge.

**CUTTING AND MARKING**

**SHRINK FABRIC** if not labeled pre-shrunk. Press.

**CIRCLE LAYOUT** for View, Size, Fabric Width.

Use **WITH NAP** layout for fabrics with one-way designs, nap, pile or surface shading. Because most knits have surface shading, a with nap layout is used.

For **DOUBLE THICKNESS (WITH FOLD)** - fold fabric with right sides together.

**\* DOUBLE THICKNESS (WITHOUT FOLD)** - For fabrics with nap, fold fabric crosswise, right sides together. Mark as shown. Cut along crosswise fold of fabric (A). Turn upper layer 180° so arrows go in same direction and place over lower layer, right sides together (B).

For **SINGLE THICKNESS** - place fabric right side up. (For Fur Pile fabrics, place pile side down.)

★ Cut other pieces first, allowing enough fabric to cut this piece. Open fabric. For "Cut 1" pieces, cut piece once on single layer of fabric with piece face up on right side of fabric.

Pattern may have cutting lines for several sizes. Select the proper cutting line or pattern pieces for your size.

Before **CUTTING** place all pieces on fabric according to layout. Pin. (Layouts show approximate position of pattern pieces; position may vary according to your pattern size.) Cut ACCURATELY, cutting notches outward.

Before removing pattern, **TRANSFER MARKINGS** and lines of construction to Wrong Side of fabric, using the Pin and Chalk Pencil method or Tracing Paper and Dressmaker Wheel. Markings needed on right side of fabric should be thread traced.

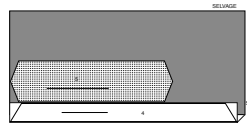
**NOTE:** Broken-line boxes (a| b| c|) in layouts represent pieces cut by measurements provided.

**CUTTING LAYOUTS**

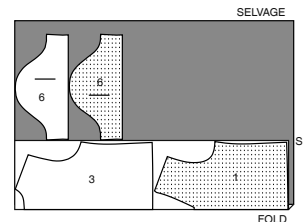
RIGHT SIDE OF PATTERN	WRONG SIDE OF PATTERN	RIGHT SIDE OF FABRIC	WRONG SIDE OF FABRIC
-----------------------	-----------------------	----------------------	----------------------

**INTERFACING A, B, C**

USE PIECES: 4 5  
20" (51 CM) WITHOUT NAP ALL SIZES



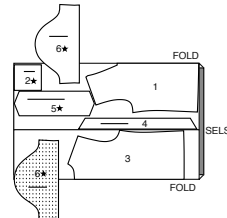
60" (150CM) WITH NAP SIZES XXXL



**TOP A**

USE PIECES: 1 2 3 4 5 6

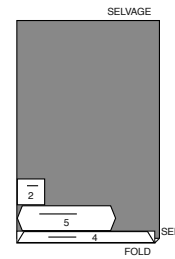
60" (150CM) WITH NAP SIZES S M L



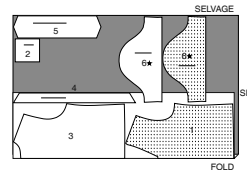
**CONTRAST**

USE PIECES: 2 4 5

60" (150CM) WITH NAP ALL SIZES



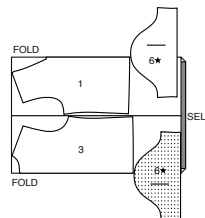
60" (150CM) WITH NAP SIZES XL XXL XXXL



**TOP B**

USE PIECES: 1 3 6

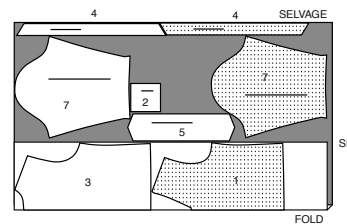
60" (150CM) WITH NAP SIZES S M L XL XXL



**TOP C**

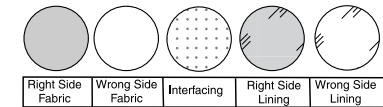
USE PIECES: 1 2 3 4 5 7

60" (150CM) WITH NAP ALL SIZES



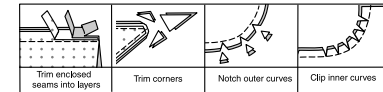
**SEWING INFORMATION**

**FABRIC KEY**



**SEAM ALLOWANCES**

Use 5/8" (1.5cm) seam allowances unless otherwise indicated.



**PIN AND FIT**

Pin or baste seams, **RIGHT SIDE TOGETHER**, matching notches. Fit garment before stitching major seams.

**PRESS**

Press seam allowances flat; then open unless otherwise stated. Clip where necessary so they lie flat.

**GLOSSARY**

Sewing methods in **BOLD TYPE** have Sewing Tutorial Video available. Scan **QR CODE** to watch videos:

**REINFORCE** - See *Machine Stitches: "how to reinforce seams"* video.

**SET IN SLEEVE** - See *Armholes/Sleeves: "sewing a set in sleeve"* video

**STITCH IN THE DITCH** - See *Machine Stitches: "how to stitch in the ditch"* video.

**SEWING TUTORIALS**



Build your skills viewing short, easy-to-follow videos at [simplicity.com/sewingtutorials](http://simplicity.com/sewingtutorials)

## SIMPLY THE BEST SEWING TECHNIQUES...

### FOR KNITS

- Use a ball point or stretch needle.
- Narrow zig-zag stitch or a stretch stitch.
- To prevent shoulder seams from stretching, pin center of hem tape, clear elastic or twill tape along seam line on front shoulder edges, then stitch the shoulder seams.

### FOR OVERLOCK/SERGER

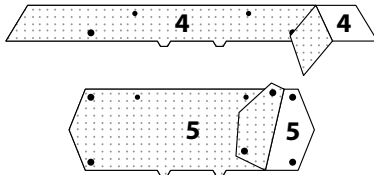
- The Overlock/Serger can be used alone or as a supplement to your conventional sewing machine.
- Overlock sewing machines stitch, trim and finish all in one operation. Therefore, it is VERY important to Check Fit before stitching seams.
- Using matching color thread, baste seams and try garment on. If no adjustments are needed, overlock seams along basting.
- The three thread overlock is ideal for major seams such as shoulder, side, underarm and sleeve seams.
- For stress areas such as crotch seams and armholes, the four thread overlock/safety stitch is best...OR, use a three thread overlock, and stitch along seam with a conventional machine to reinforce.
- The two or three thread overlock stitch is a perfect finish for edges of facings, hems and seam allowances.

## SHIRT A, B C

**NOTE:** under each sub-heading, **View A** will be shown unless otherwise indicated.

### INTERFACING

1. Pin INTERFACING to wrong side of each matching FABRIC section. Fuse, following manufacturer's instructions.

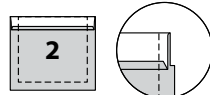


### FRONT AND BACK

2. REINFORCE FRONT (1) along stitching lines, as shown. Clip to small dots being careful not to clip through stitching.



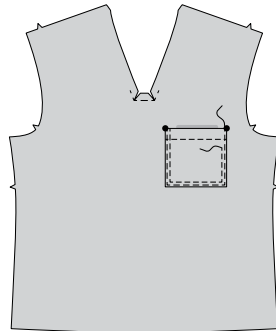
3. Press under 1/4" (6mm) on upper edge of POCKET (2). Turn upper edge to OUTSIDE along fold line, forming facing. Stitch along seam line on raw edges. Trim seam allowance in the facing area to 1/4" (6mm).



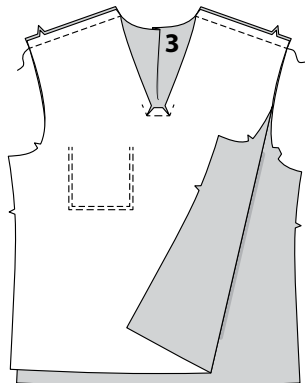
4. Turn corners RIGHT side out, turning facing to the WRONG side; press, pressing under raw edges along stitching. Stitch facing close to inner edge.



5. On OUTSIDE, pin pocket to LEFT side of front matching large dots. Stitch close to side and lower edges and 1/4" (6mm) away.

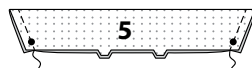


6. With RIGHT sides together, stitch front to BACK (3) at shoulder seams.

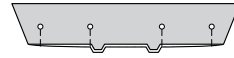


### COLLAR AND NECK BAND

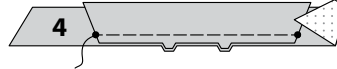
7. With RIGHT sides together, fold COLLAR (5) in half lengthwise along fold line. Stitch ends.



8. Turn collar RIGHT side out. Press. Pin.



9. On OUTSIDE, pin collar to interfaced NECK BAND (4) matching large dots and notches, having raw edges even. Baste.



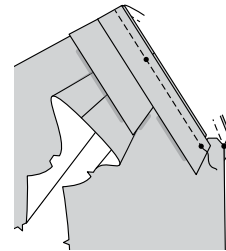
10. Pin remaining neck band section to band, (over collar) having raw edges even. Stitch notched edge leaving ends free.



11. Turn collar band to INSIDE. Pin.



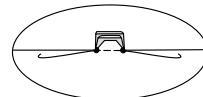
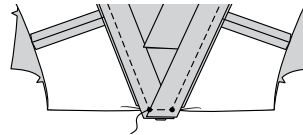
12. With RIGHT sides together, pin interfaced side of collar and band to neck edge matching small dots at front and placing remaining small dots at shoulder seams. Stitch neck edge ending at small dots in front.



13. Turn collar and band seam to INSIDE. Press.

On INSIDE, lap RIGHT band over LEFT, matching small dots. Pin lower edge of band and clipped edge of front together. Stitch between small dots, back-stitching to reinforce seam.

**TIP:** If you prefer, on OUTSIDE, **STITCH IN THE DITCH** or "groove" of front seam between small dots, catching in pressed edge of seam on INSIDE.

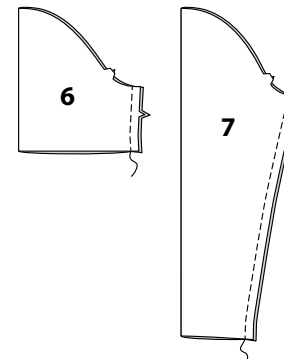


## SLEEVES

14. With RIGHT sides together, stitch front to back at side seams.



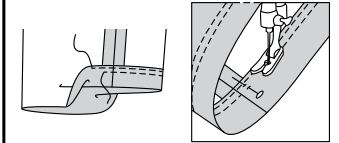
15. With RIGHT sides together, stitch underarm seam of SLEEVE (6 OR 7).



16. Press up hem on lower edge of sleeve.

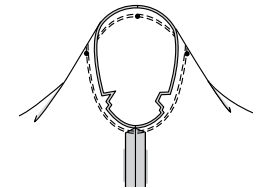
Stitch OR zig-zag 1/4" (6mm) from raw edge and 1/4" (6mm) below first stitching.

**TIP:** It's easier to stitch the hem in a circle if you keep the RIGHT side of the sleeve against the machine with the INSIDE facing you and the needle INSIDE the circle, as shown.



17. Turn sleeve RIGHT side out. To SET IN SLEEVE, hold garment WRONG side out with armhole toward you. With RIGHT sides together, pin sleeve to armhole edge with center small dot at shoulder seam, matching underarm seams, notches and remaining small dots. Baste. Stitch. Stitch again 1/8" (3mm) from first stitching. Trim seam below notches close to stitching. Press only the seam allowance, shrinking out fullness.

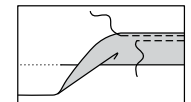
**NOTE:** see Armholes/Sleeves: "sewing a set in sleeve" video for more assistance.



## FINISHING

18. Press up hem on lower edge of garment.

Stitch OR zig-zag 1/4" (6mm) from raw edge and 1/4" (6mm) below first stitching.





# Congrats!

You've completed your sewing adventure

---

## SHARE YOUR LOOK



Post your pattern and tag us using [#simplicitypatterns](#)  
[@simplicity\\_creative\\_group](#)  
[@simplicitymccallsuk](#)  
[@simplicitymccallsaustralia](#)  
for a chance to be featured on our social media.

Look for more PDF patterns at [simplicity.com](#) or for customers outside the U.S. and Canada visit [sewdirect.com](#) and [sewdirect.com.au](#)

Have a question or need help with your sewing project contact us:  
[Simplicity.com](#)    [Sewdirect.com](#)    [Sewdirect.com.au](#)

**McCall's**  
by **design**<sub>group</sub>

McCall's ©2025 a division of IG Design Group Americas Inc. • Atlanta, GA 30342 USA [www.thedesigngroup.com](#) • All Rights Reserved. [www.mccall.com](#) • Made in the U.S.A. Fabriqué aux États-Unis.  
To be used for individual private home use only and not for commercial or manufacturing purposes. • A usage privé seulement et non à des fins commerciales ou de production en série. • Para uso privado solamente, no se puede utilizar con propósitos de comercialización o de producción en serie.