

McCall's

M8588



Designed and printed in USA

This sewing pattern includes multiple view options with simple instructions. Show your make!
Ce patron de couture comprend plusieurs modèles avec des instructions faciles! Montrez votre réalisation!

Average

UNISEX PANTS IN TWO LENGTHS

Suggested Fabrics: Batiks, Broadcloth, Chambray, Cotton Blends, Linen Blends. **Interfacing:** Medium weight fusible.

Notions: A,B: ¾ yd. (0.7m) of 1¼" (3cm) elastic, one 7" (18cm) zipper (cut to fit), one ¾" (1.5cm) button.

Sizes	XS (30-32)	S (34-36)	M (38-40)	L (42-44)	XL (46-48)	XXL (50-52)
European	30-32	34-36	38-40	42-44	46-48	50-52

BODY MEASUREMENTS: Select pattern size based on body measurements

Bust/ Chest	30-32	34-36	38-40	42-44	46-48	50-52	Ins.
Waist	24-26	28-30	32-34	36-39	42-44	46-48	"
Hip	32-34	35-37	39-41	43-45	47-49	51-53	"

Pants A	45"*	2½	2¾	2¾	3½	3¼	3¾	Yds.
	60"*	1¾	2	2	2¾	2¾	2¾	"
Interfacing	20"	¾	¾	¾	¾	1	1	"

Pants B	45"*	3	3½	3½	3½	3½	3½	Yds.
	60"*	2½	2¾	2½	2¾	3½	3½	"
Interfacing	20"	1	1	1½	1½	1½	1½	"

FINISHED GARMENT MEASUREMENTS (Includes Design and Wearing Ease)

A,B Hip	37½	43	47	51	55	59	Ins.
---------	-----	----	----	----	----	----	------

Width, each leg

Pants A,B	22¼	23¾	25¼	26¾	28¼	29¾	Ins.
-----------	-----	-----	-----	-----	-----	-----	------

Finished side length from waist

Pants A (sits 1" below waist)	38	38½	39	39½	40	40½	Ins.
-------------------------------	----	-----	----	-----	----	-----	------

Pants B (sits 1" below waist)	42	42½	43	43½	44	44½	Ins.
-------------------------------	----	-----	----	-----	----	-----	------

*with nap **without nap

Moins Facile

PANTALON EN DEUX LONGUEURS UNISEXE

Tissus Conseillés: Batiks, Broadcloth, Chambray, Cottonnades, Lin mélangés. **Entoilage:** Thermocollant de poids moyen.

Mercerie: A,B: 0.7m d'élastique de 3cm, 1 fermeture à glissière de 18cm (coupée pour ajuster), 1 bouton de 1.5cm.

Tailles	TP/XS	P/S	M	G/L	TG/XL	TTG/XXL
Françaises	32-34	36-38	40-42	44-46	48-50	52-54
Européen	30-32	34-36	38-40	42-44	46-48	50-52

MESURES DU CORPS: Choisissez la taille du patron basée sur les mesures du corps

Poitrine	76-81	87-92	97-102	107-112	117-122	127-132	cm
Taille	61-66	71-76	81-87	92-99	107-112	117-122	"
Hanches	81-87	89-94	99-104	109-115	119-124	128-135	"

Pantalón A	115cm*	2.4	2.4	2.5	2.9	2.9	3.1	m
	150cm* <td>1.6</td> <td>1.8</td> <td>1.8</td> <td>2.2</td> <td>2.5</td> <td>2.5</td> <td>"</td>	1.6	1.8	1.8	2.2	2.5	2.5	"
Entoilage	51cm	0.7	0.8	0.8	0.8	0.9	0.9	"

Pantalón B	115cm*	2.7	2.9	2.9	2.9	3.3	3.3	m
	150cm* <td>1.8</td> <td>2.2</td> <td>2.3</td> <td>2.3</td> <td>2.9</td> <td>2.9</td> <td>"</td>	1.8	2.2	2.3	2.3	2.9	2.9	"
Entoilage	51cm	0.9	0.9	1.0	1.0	1.0	1.1	"

MESURES DES VÊTEMENTS FINI (Motif et aisance de port compris)

A,B Hanches	95	109	119	130	140	150	cm
-------------	----	-----	-----	-----	-----	-----	----

Largeur, chaque jambe

Pantalón A,B	57	60	64	68	72	76	cm
--------------	----	----	----	----	----	----	----

Longueur finie – côté, taille à l'ourlet

Pantalón A (repose 2.5cm dessous de la taille)	97	98	99	100	102	103	cm
--	----	----	----	-----	-----	-----	----

Pantalón B (repose 2.5cm dessous de la taille)	107	108	109	110	112	113	cm
--	-----	-----	-----	-----	-----	-----	----

*avec sens **sans sens



A

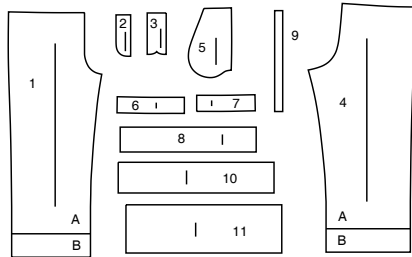
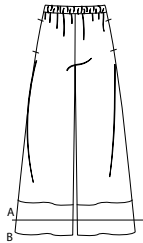
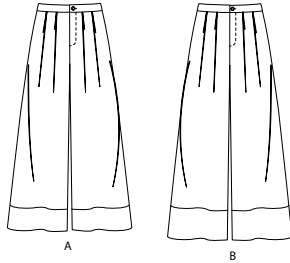


B

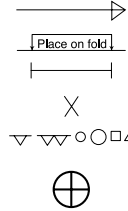


A

B



- 1 Front-A,B
- 2 Left Fly Facing-A,B
- 3 Right Fly-A,B
- 4 Back-A,B
- 5 Pocket-A,B
- 6 Right Front Waistband-A,B
- 7 Left Front Waistband-A,B
- 8 Back Casing-A,B
- 9 Elastic Guide-A,B
- 10 Front and Back Band-A
- 11 Front and Back Band-B



PATTERN MARKINGS

GRAINLINE: Place on straight grain of fabric, parallel to selvage or fold.
FOLDLINE: Place line on fold of fabric.
BUTTONHOLE MARKING: Indicates exact length and placement of buttonholes.
BUTTON MARKING: Indicates button placement.
NOTCHES AND SYMBOLS: For matching seams and construction details.
 Indicates the Bustline, Waistline, Hip and/or Biceps. Measurements refer to circumference of Finished Garment (Body Measurement + Wearing Ease + Design Ease). Adjust pattern if necessary. The measurement excludes pleats, tucks, darts and seam allowances.
SEAM ALLOWANCE: 5/8" (1.5cm) included unless otherwise indicated, but not printed on tissue.

ADJUST IF NECESSARY

Lengthen or Shorten at adjustment lines (==) or where indicated on pattern. If substantial length is added, you may need to purchase additional fabric.
TO SHORTEN: Crease along adjustment line. Make a fold half the amount needed. Tape in place.
TO LENGTHEN: Slash between adjustment lines. Spread amount as needed, keeping edges parallel. Tape over paper.
 When Alteration lines are not on tissue, lengthen or shorten at lower edge.

CUTTING AND MARKING

SHRINK FABRIC if not labeled pre-shrunk. Press.
CIRCLE LAYOUT for View, Size, Fabric Width.
 Use **WITH NAP** layout for fabrics with one-way designs, nap, pile or surface shading. Because most knits have surface shading, a with nap layout is used.
 For **DOUBLE THICKNESS (WITH FOLD)** - fold fabric with right sides together.
***DOUBLE THICKNESS (WITHOUT FOLD)** - For fabrics with nap, fold fabric crosswise, right sides together. Mark as shown. Cut along crosswise fold of fabric (A). Turn upper layer 180° so arrows go in same direction and place over lower layer, right sides together (B).
 For **SINGLE THICKNESS** - place fabric right side up. (For Fur Pile fabrics, place pile side down.)

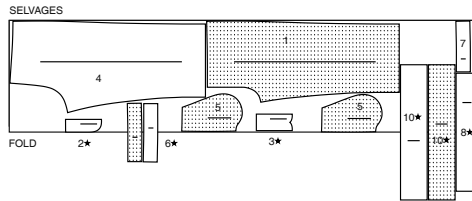
★ Cut other pieces first, allowing enough fabric to cut this piece. Open fabric. For "Cut 1" pieces, cut piece once on single layer of fabric with piece face up on right side of fabric.
 Pattern may have cutting lines for several sizes. Select the proper cutting line or pattern pieces for your size.
 Before **CUTTING** place all pieces on fabric according to layout. Pin. (Layouts show approximate position of pattern pieces; position may vary according to your pattern size.) Cut **ACCURATELY**, cutting notches outward.
 Before removing pattern, **TRANSFER MARKINGS** and lines of construction to Wrong Side of fabric, using the Pin and Chalk Pencil method or Tracing Paper and Dressmaker Wheel. Markings needed on right side of fabric should be traced thread.
NOTE: Broken-line boxes (a|b|c) in layouts represent pieces cut by measurements provided.

CUTTING LAYOUTS

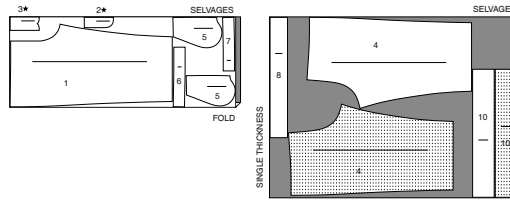
PANT A

USE PIECES 1 2 3 4 5 6 7 8 10

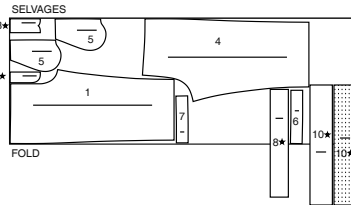
45" (115CM)
 WITH NAP
 SIZES XS S M



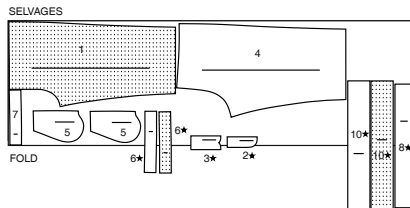
45" (115CM)
 WITH NAP
 SIZES L XL XXL



60" (150CM)
 WITH NAP
 SIZES XS S M L



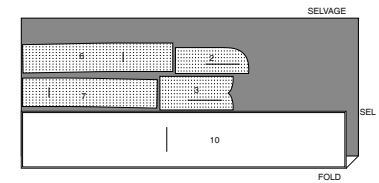
60" (150CM)
 WITH NAP
 SIZES XL XXL



INTERFACING A

USE PIECES 2 3 6 7 10

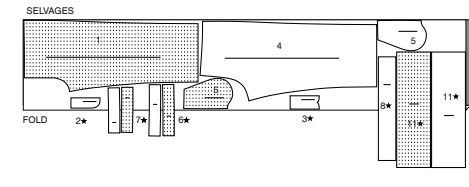
20" (51CM)
 WITHOUT NAP
 ALL SIZES



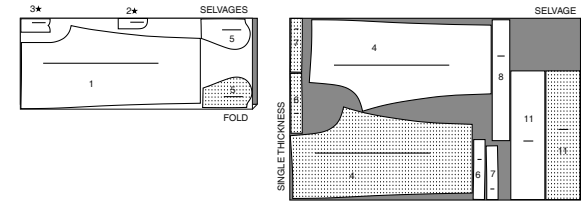
PANT B

USE PIECES 1 2 3 4 5 6 7 8 11

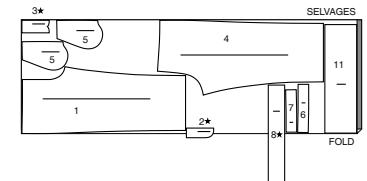
45" (115CM)
 WITH NAP
 SIZES XS S M L



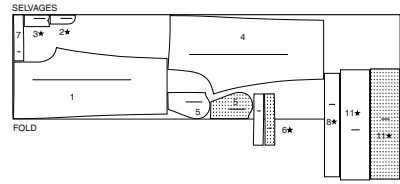
45" (115CM)
 WITH NAP
 SIZES XL XXL



60" (150CM)
 WITH NAP
 SIZES XS S M L

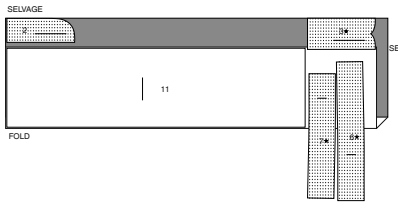


60" (150CM)
with nap
sizes XL XXL

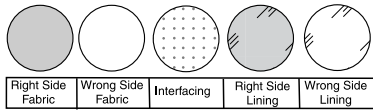


INTERFACING B
USE PIECES 2 3 6 7 11

20" (51CM)
WITHOUT NAP
ALL SIZES

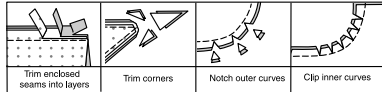


SEWING INFORMATION
FABRIC KEY



SEAM ALLOWANCES

Use 5/8" (1.5cm) seam allowances unless otherwise indicated.



PIN AND FIT

Pin or baste seams, **RIGHT SIDE TOGETHER**, matching notches. Fit garment before stitching major seams.

PRESS

Press seam allowances flat; then open unless otherwise stated. Clip where necessary so they lie flat.

GLOSSARY

Sewing methods in **BOLD TYPE** have Sewing Tutorial Video available. Scan QR CODE to watch videos:

EDGE STITCH – See **Machine Stitches**: “how to sew an edgestitch” video.

FLY FRONT ZIPPER – See **Zippers**: “sewing a fly front zipper” video.

STITCH IN THE DITCH – See **Machine Stitches**: “how to stitch in the ditch” video.

TRIM SEAM – See **Seams**: “how to trim, clip and layer seams” video.

UNDERSTITCH – See **Machine Stitches**: “how to understitch” video.

SEWING TUTORIALS



Build your skills: viewing short, easy-to-follow videos at simplicity.com/sewingtutorials

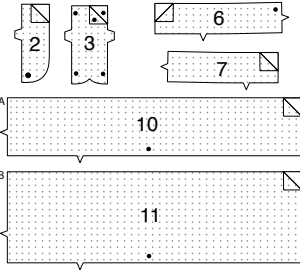
PATTERN PIECES WILL BE IDENTIFIED BY NUMBERS THE FIRST TIME THEY ARE USED.

STITCH 5/8" (1.5CM) SEAMS WITH RIGHT SIDES TOGETHER UNLESS OTHERWISE STATED.

PANTS A, B

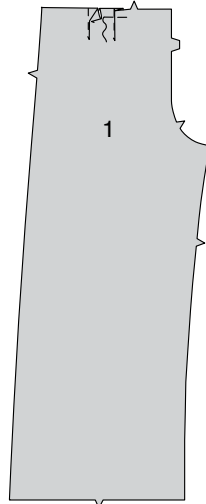
INTERFACING

1. Pin interfacing to **WRONG** side of **LEFT FLY FACING** (2), **RIGHT FLY** (3), **RIGHT FRONT WAISTBAND** (6), **LEFT FRONT WAISTBAND** (7), and additionally for View A, **FRONT AND BACK BAND** (10), or for View B, **FRONT AND BACK BAND** (11). Fuse in place following manufacturer's directions



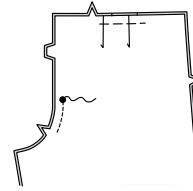
FRONT

2. To make pleats on **FRONT** (1) sections, on **OUTSIDE**, fold along solid lines. Bring folds to broken lines; pin. Baste across raw edge.

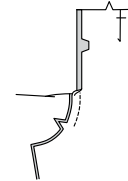


FLY FRONT ZIPPER

3. For a **FLY FRONT ZIPPER** construction with a **LEFT** front opening, stitch front sections together at center front between large dot and notch.



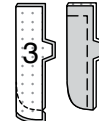
4. Turn in **RIGHT** front opening edge along foldline; press.



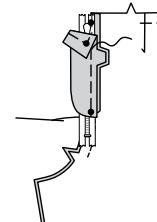
5. Place closed zipper (face up) under **RIGHT** front opening edge, having pressed edge close to zipper teeth and zipper stop at small dot. Using a zipper foot, baste close to pressed edge.



6. With **RIGHT** sides together, fold **RIGHT FLY** (3) along in half, lengthwise. Stitch lower edge. Trim. Turn. Press. Baste raw edges.



7. On **INSIDE**, pin right fly to **RIGHT** front opening edge (over zipper), matching notches and small dots, having raw edges even. Baste along previous basting for zipper.

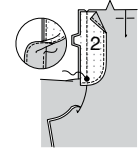


8. On **OUTSIDE**, using a zipper foot, stitch close to pressed edge of front through all layers.

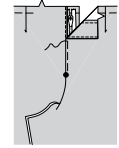


9. Finish outer edge of **LEFT FLY FACING** (2) by stitching 1/4" (6mm) from raw edge and finishing with pinking, overcasting, overlock, or by turning in along stitching and stitching close to fold.

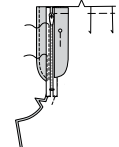
Pin fly facing to **LEFT** front opening edge, matching notches, and large dots. Stitch, ending at large dot. Trim. **UNDERSTITCH** fly facing. Turn facing to inside.



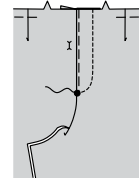
10. Lap **LEFT** front over **RIGHT**, matching centers. Baste close to edge through all thicknesses.



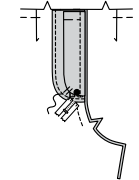
11. Pin right fly out of the way. Open out fly facing. Pin remaining zipper tape to fly facing, keeping **LEFT** front free. Using a zipper foot, stitch in place close to zipper teeth and along center of zipper tape.



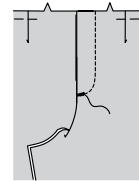
12. Turn facing down. On **OUTSIDE**, stitch **LEFT** front along stitching line, keeping right fly free.



13. Turn right fly back in place. On **INSIDE**, hand tack fly and facing together at lower edge, as shown. Trim away excess zipper tape even with lower edge of fly, if needed.

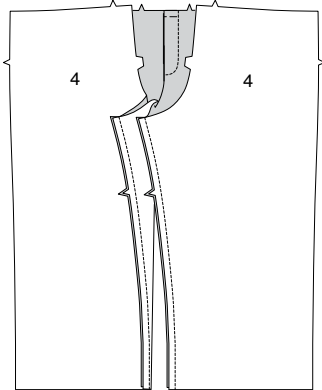


14. If you prefer, on **OUTSIDE**, machine-stitch a bar tack across lower end of fly through all thicknesses.

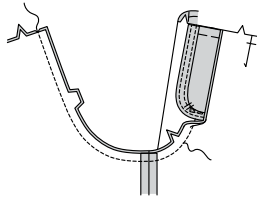


INNER LEG AND CENTER SEAMS

15. With RIGHT sides together and raw edges even, pin front to BACK (4) at inner leg edges. Stitch.

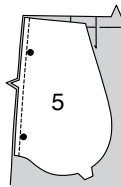


16. Pin center edges together, matching notches. Stitch center seam from upper back to front, connecting to previous stitching. To reinforce the seam, stitch again over previous stitching.

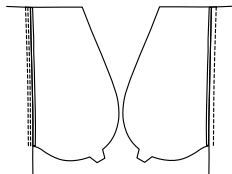


POCKETS

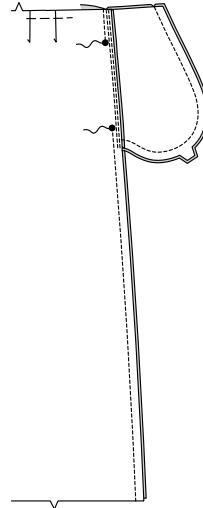
17. With RIGHT sides together, pin POCKET (5) to front, matching large dots, having raw edges even. Stitch in 3/8" (1cm) seam. Stitch pocket to back sections in the same manner.



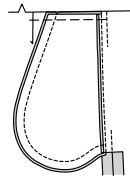
18. UNDERSTITCH the front pocket. Press seams toward pockets, pressing pockets out.



19. Pin front to back at side edges, matching large dots. Stitch side seams, leaving an opening between large dots. Stitch pocket edges together from side seam to upper edge.

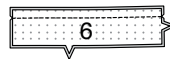


20. Clip pants back seam allowance below pocket. Press seam open below clip. Press pocket toward front. Baste upper edge of pocket to front, having raw edges even.

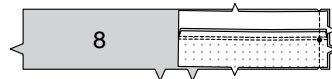


WAISTBAND AND CASING

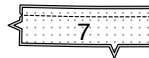
21. With RIGHT sides together and raw edges even, pin RIGHT FRONT WAISTBAND (6) to right front waistband facing along long, unnotched edge. Stitch. TRIM SEAM.



22. UNDERSTITCH the facing. With RIGHT sides together and raw edges even, pin right front waistband to back CASING (8) at RIGHT side edge, matching notches. Stitch.



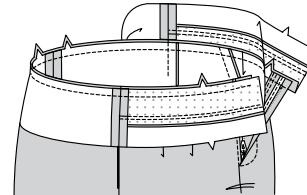
23. With RIGHT sides together and raw edges even, pin LEFT FRONT WAISTBAND (7) to left front waistband facing along long, unnotched edge. Stitch. TRIM SEAM.



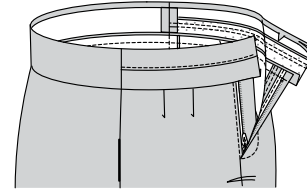
24. UNDERSTITCH the facing. With RIGHT sides together and raw edges even, pin left front waistband to back casing at LEFT side edge, matching small dots. Stitch.



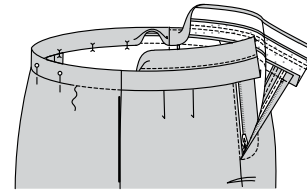
25. With RIGHT sides together and raw edges even, pin waistband/casing to upper edge of pants, matching centers, seams, and notches. (Ends of waistband will extend 5/8" (1.5cm) beyond opening edges of pants.) Stitch. TRIM SEAM. Press seam toward waistband/casing, pressing waistband/casing out.



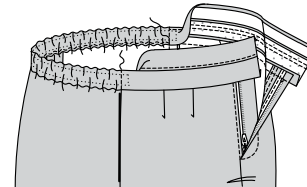
26. Press under 1/2" (1.3cm) on remaining long edge of waistband/casing. Trim to 1/4" (6mm).



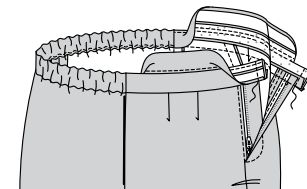
27. Fold casing to INSIDE along foldline; press, pressing waistband facings to INSIDE. Pin pressed edge of casing (ONLY) over seam, placing pins on OUTSIDE. On OUTSIDE, STITCH IN THE DITCH of the seam, catching in pressed edge of casing facing on the INSIDE, keeping waistband facings free.



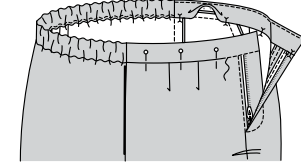
28. Cut a piece of elastic the length of ELASTIC GUIDE (9). Transfer markings. Attach a safety pin to one end of elastic. Thread elastic through casing, matching marks on ends to side seams. Stitch across casing over side seams, securely.



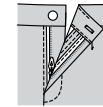
29. Turn waistband facings to OUTSIDE at front ends. Stitch across ends. TRIM SEAM.



30. Turn facings to INSIDE; press, pressing out corners. On INSIDE, pin pressed edge of facing over seam, placing pins on OUTSIDE. On OUTSIDE, STITCH IN THE DITCH of the seam, catching in pressed edge of facing on the INSIDE.



31. Make buttonhole in left waistband at marking. Sew button to right waistband at small dot.

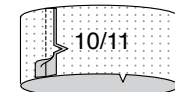


LEG BANDS

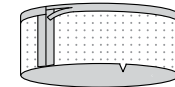
NOTE: To add bands to lower edges of pant legs, use FRONT AND BACK BAND (10) for View A, or FRONT AND BACK BAND (11) for View B.

View A will be shown in the following illustrations.

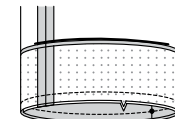
32. With RIGHT sides together, stitch inner leg edges of FRONT AND BACK BAND (10/11). Press seam open.



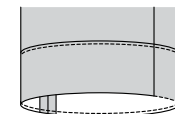
33. Press under 5/8" (1.5cm) on unnotched edge. Trim to 1/4" (6mm).



34. Pin RIGHT side of the band to the WRONG side of the pant leg, matching inner leg seams and notches, placing small dot at side seam. Stitch lower edge along seamline. TRIM SEAM.



35. UNDERSTITCH the pant leg. Turn band to OUTSIDE along seamline; press, pressing up band. EDGESTITCH band in place close to upper edge.





Congrats!

You've completed your sewing adventure

SHARE YOUR LOOK



Post your pattern and tag us using [#simplicitypatterns](#)
[@simplicity_creative_group](#)
[@simplicitymccallsuk](#)
[@simplicitymccallsaustralia](#)
for a chance to be featured on our social media.

Look for more PDF patterns at [simplicity.com](#) or for customers outside the U.S. and Canada visit [sewdirect.com](#) and [sewdirect.com.au](#)

Have a question or need help with your sewing project contact us:
[Simplicity.com](#) [Sewdirect.com](#) [Sewdirect.com.au](#)

McCall's
by **design**_{group}

McCall's ©2025 a division of IG Design Group Americas Inc. • Atlanta, GA 30342 USA [www.thedesigngroup.com](#) • All Rights Reserved. [www.mccall.com](#) • Made in the U.S.A. Fabriqué aux États-Unis.
To be used for individual private home use only and not for commercial or manufacturing purposes. • A usage privé seulement et non à des fins commerciales ou de production en série. • Para uso privado solamente, no se puede utilizar con propósitos de comercialización o de producción en serie.