

McCall's

M8586



Designed and printed in USA

This sewing pattern includes multiple view options with simple instructions. Show your maker!  
Ce patron de couture comprend plusieurs modèles avec des instructions faciles! Montrez votre réalisation!

Average

MISSES' TOP AND SKIRT IN TWO LENGTHS

**Suggested Fabrics:** Boucle, Denim, Linen Blends, Sateen, Twill. **Interfacing:** Lightweight Fusible. **Lining B,C:** Lining Fabric.

**Notions:** A,B,C: 3/8" (2.2cm) buttons: Seven for A, Eight for B,C.

Sizes	8	10	12	14	16	18	20	22	24	26
European	34	36	38	40	42	44	46	48	50	52

BODY MEASUREMENTS: Select pattern size based on body measurements

Bust	31½	32½	34	36	38	40	42	44	46	48	Ins.
Waist	24	25	26½	28	30	32	34	37	39	41	"
Hip-9" below waist	33½	34½	36	38	40	42	44	46	48	50	"
Back-neck to waist	15¾	16	16¼	16½	16¾	17	17¼	17½	17¾	18	"

Top A	45**	1¼	1¼	1¼	1¾	1¾	1½	1½	1½	1½	Yds.
	60**	1¾	1¾	1¾	1¾	1¾	1¾	1¾	1¾	1¾	"

Interfacing 20" - ¾ yd.

Skirt B	45**	1¼	1¼	1¾	1¾	1¾	1¾	1¾	1¾	1¾	Yds.
	60**	1¾	1¾	1¾	1¾	1¾	1¾	1¾	1¾	1¾	"

Interfacing 20" - ¾ yd.

Lining B,C	45**	- ¾ yd.									
Skirt C	45**	1¾	1¾	1¾	1¾	2¼	2¼	2¼	2¼	2¼	Yds.
	60**	1¾	1¾	1¾	1¾	1¾	1¾	1¾	1¾	1¾	"

Interfacing 20" - 1 yd.

FINISHED GARMENT MEASUREMENTS (Includes Design and Wearing Ease)

A Bust	35	36	37½	39½	41½	43½	45½	47½	49½	51½	Ins.
A Waist	29½	30½	32	34	36	38	40	42	44	46	"
B,C Hip	37½	38½	40	42	44	46	48	50	52	54	"
Width, lower edge											

Top A	30	31	32½	34½	36½	38½	40½	42½	44½	46½	Ins.
Skirt B	44	45	46½	48½	50½	52½	54½	56½	58½	60½	"
Skirt C	50	51	52½	54½	56½	58½	60½	62½	64½	66½	"

Finished back length from base of neck

Top A	16¾	17	17¼	17¾	18	18¼	18½	18¾	19	Ins.
-------	-----	----	-----	-----	----	-----	-----	-----	----	------

Finished back length from waist (skirts sit 1" below waist)

Top A	18	18	18	18	18	18	18	18	18	18	Ins.
Skirt B	18	18	18	18	18	18	18	18	18	18	"
Skirt C	28	28	28	28	28	28	28	28	28	28	"

\*with nap \*\*without nap

Moins Facile

HAUT ET JUPE EN DEUX LONGUEURS POUR JEUNES FEMMES

**Tissus Conseillés:** Bouclé, Denim, Lin mélangés, Satinette, Twill. **Entoilage:** Thermocollant léger. **Doublure B,C:** Tissu à doublure.

**Merçerie:** A,B,C: Boutons de 2.2cm: 7 pour A, 8 pour B,C.

Tailles	8	10	12	14	16	18	20	22	24	26
Françaises	36	38	40	42	44	46	48	50	52	54
Européen	34	36	38	40	42	44	46	48	50	52

MESURES DU CORPS: Choisissez la taille du patron basée sur les mesures du corps

Poitrine	80	83	87	92	97	102	107	112	117	122	cm
Taille	61	64	67	71	76	81	87	94	99	104	"
Hanches (23cm au-dessous de la taille)	85	88	92	97	102	107	112	117	122	127	cm
Dos du cou à la taille	40	40.5	41.5	42	42.5	43	44	44.5	45	46	"

Haut A	115cm*	1.1	1.1	1.1	1.3	1.3	1.3	1.4	1.4	1.5	1.5	m
	150cm*	1.0	1.0	1.0	1.0	1.0	1.0	1.1	1.1	1.1	1.1	"

Entoilage 51cm - 0.6m

Jupe B	115cm*	1.1	1.1	1.3	1.3	1.3	1.3	1.3	1.5	1.5	1.5	m
	150cm*	1.0	1.0	1.0	1.0	1.0	1.0	1.0	1.0	1.0	1.0	"

Entoilage 51cm - 0.8m

Doublure B,C	115cm**	- 0.2m										
Jupe C	115cm*	1.7	1.7	1.7	1.7	1.9	1.9	1.9	1.9	1.9	1.9	m
	150cm*	1.6	1.6	1.6	1.6	1.6	1.6	1.6	1.6	1.6	1.6	"

Entoilage 51cm - 0.9m

MESURES DES VÊTEMENTS FINI (Motif et aisance de port compris)

A Poitrine	89	91	95	100	105	110	116	121	126	131	cm
A Taille	75	77	81	86	91	97	102	107	112	117	"
B,C Hanches	95	98	102	107	112	117	122	127	132	137	"
Largeur à l'ourlet											

Haut A	76	79	83	88	93	98	103	108	113	118	cm
Jupe B	112	114	118	123	128	133	138	144	149	154	"
Jupe C	127	130	133	138	144	149	154	159	164	169	"

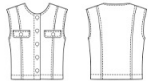
Longueur finie - dos, votre nuque à l'ourlet

Haut A	43	43	44	44	45	46	46	47	48	48	cm
--------	----	----	----	----	----	----	----	----	----	----	----

Longueur finie - dos, taille à l'ourlet (les jupes reposent 2.5cm dessous de la taille)

Haut A	46	46	46	46	46	46	46	46	46	46	cm
Jupe B	46	46	46	46	46	46	46	46	46	46	"
Jupe C	71	71	71	71	71	71	71	71	71	71	"

\*avec sens \*\*sans sens



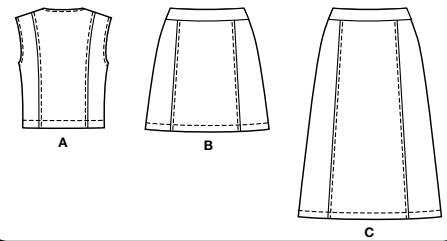
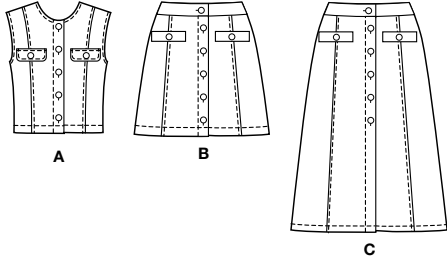
A



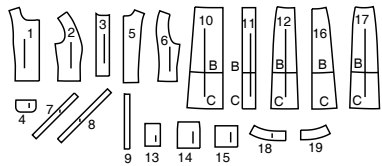
B



C

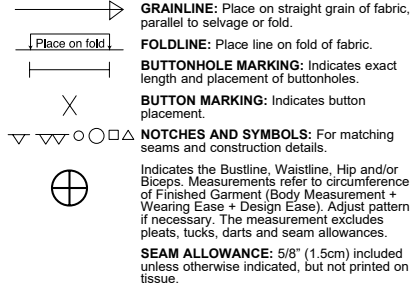


19 PATTERN PIECES



- 1 Front-A
- 2 Side Front-A
- 3 Front Interfacing-A
- 4 Flap-A
- 5 Back-A
- 6 Side Back-A
- 7 Neck Facing-A
- 8 Armhole Facing-A
- 9 Guide for Buttonholes-A
- 10 Front-B,C (c.l. B)
- 11 Front Interfacing-B,C (c.l. B)
- 12 Side Front-B,C
- 13 Welt-B,C
- 14 Pocket-B,C
- 15 Pocket Lining-B,C
- 16 Back-B,C
- 17 Side Back-B,C
- 18 Front Waistband-B,C
- 19 Back Waistband-B,C

**PATTERN MARKINGS**



**ADJUST IF NECESSARY**

Lengthen or Shorten at adjustment lines (==) or where indicated on pattern. If substantial length is added, you may need to purchase additional fabric.

**TO SHORTEN:** Crease along adjustment line. Make a fold half the amount needed. Tape in place.

**TO LENGTHEN:** Slash between adjustment lines. Spread amount as needed, keeping edges parallel. Tape over paper.

When Alteration lines are not on tissue, lengthen or shorten at lower edge.

**CUTTING AND MARKING**

**SHRINK FABRIC** if not labeled pre-shrunk. Press.

**CIRCLE LAYOUT** for View, Size, Fabric Width.

Use **WITH NAP** layout for fabrics with one-way designs, nap, pile or surface shading. Because most knits have surface shading, a with nap layout is used.

For **DOUBLE THICKNESS (WITH FOLD)** - fold fabric with right sides together.

**\* DOUBLE THICKNESS (WITHOUT FOLD)** - For fabrics with nap, fold fabric crosswise, right sides together. Mark as shown. Cut along crosswise fold of fabric (A). Turn upper layer 180° so arrows go in same direction and place over lower layer, right sides together (B).

For **SINGLE THICKNESS** - place fabric right side up. (For Fur Pile fabrics, place pile side down.)

★ Cut other pieces first, allowing enough fabric to cut this piece. Open fabric. For "Cut 1" pieces, cut piece once on single layer of fabric with piece face up on right side of fabric.

Pattern may have cutting lines for several sizes. Select the proper cutting line or pattern piece for your size.

Before **CUTTING** place all pieces on fabric according to layout. Pin. (**Layouts show approximate position of pattern pieces; position may vary according to your pattern size.**) Cut **ACCURATELY**, cutting notches outward.

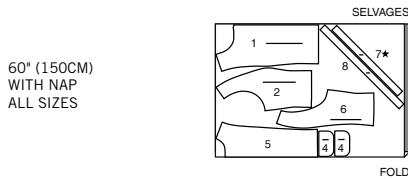
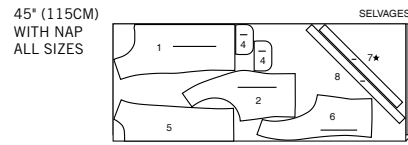
Before removing pattern, **TRANSFER MARKINGS** and lines of construction to Wrong Side of fabric, using the Pin and Chalk Pencil method or Tracing Paper and Dressmaker Wheel. Markings needed on right side of fabric should be thread traced.

**NOTE:** Broken-line boxes (a! b! c!) in layouts represent pieces cut by measurements provided.

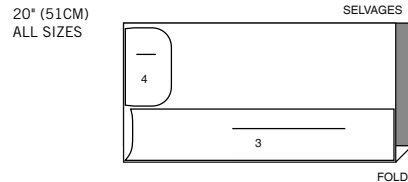
**CUTTING LAYOUTS**

RIGHT SIDE OF PATTERN	WRONG SIDE OF PATTERN	RIGHT SIDE OF FABRIC	WRONG SIDE OF FABRIC
-----------------------	-----------------------	----------------------	----------------------

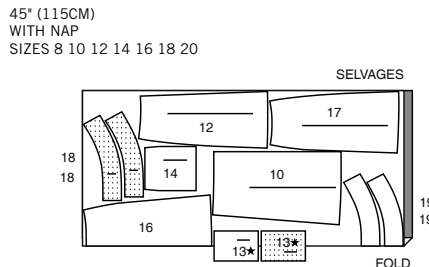
**TOP A**  
USE PIECES 1 2 4 5 6 7 8



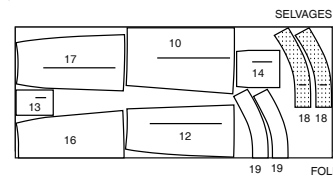
**INTERFACING A**  
USE PIECES 3 4



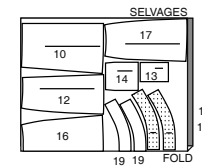
**SKIRT B**  
USE PIECES 10 12 13 14 16 17 18 19



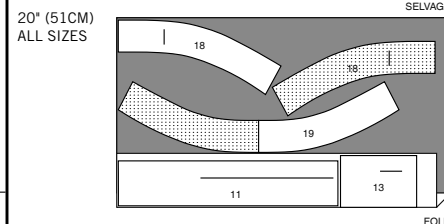
45" (115CM) WITH NAP SIZES 22 24 26



60" (150CM) WITH NAP ALL SIZES



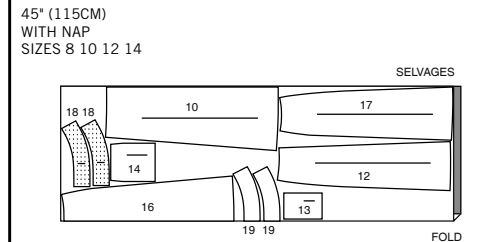
**INTERFACING B**  
USE PIECES 11 13 18 19



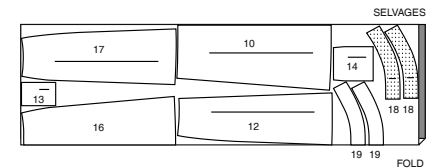
**LINING B,C**  
USE PIECES 15



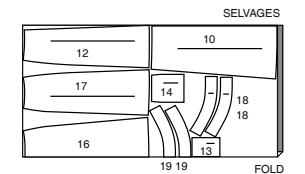
**SKIRT C**  
USE PIECES 10 12 13 14 16 17 18 19



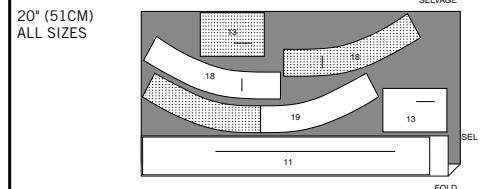
45" (115CM) WITH NAP SIZES 16 18 20 22 24 26



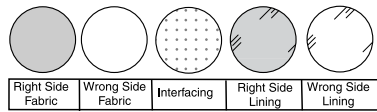
60" (150CM) WITH NAP ALL SIZES



**INTERFACING C**  
USE PIECES 11 13 18 19

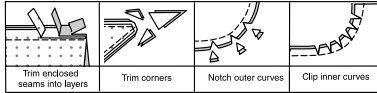


**SEWING INFORMATION**  
FABRIC KEY



**SEAM ALLOWANCES**

Use 5/8" (1.5cm) seam allowances unless otherwise indicated.



**PIN AND FIT**

Pin or baste seams, **RIGHT SIDE TOGETHER**, matching notches. Fit garment before stitching major seams.

**PRESS**

Press seam allowances flat; then open unless otherwise stated. Clip where necessary so they lie flat.

**GLOSSARY**

Sewing terms appearing in **BOLD TYPE** in Sewing Instructions are explained below.

**EASESTITCH** - Stitch along seamline, using long machine stitches. Pull thread ends when adjusting to fit.

**EDGESTITCH** - Stitch close to finished edge or seam.

**OPTIONAL FOR HEMS:** Apply Seam Binding.

**REINFORCE** - Stitch along seamline where indicated in sewing instructions, using small machine stitches.

**STAYSTITCH** - Stitch 1/8" (3mm) from seamline in seam allowance (usually 1/2" (1.3cm) from raw edge).

**SLIPSTITCH** - Slide needle through a folded edge, then pick up a thread of underneath fabric.

**TOPSTITCH** - On outside, stitch 1/4" (6mm) from edge, seam or previous stitching, using presser foot as guide, or stitch where indicated in instructions.

**UNDERSTITCH** - Open out facing or underside of garment; stitch to seam allowance close to seam.

SEWING TUTORIALS



Build your skills viewing short, easy-to-follow videos at [simplicity.com/sewingtutorials](http://simplicity.com/sewingtutorials)

**TOP A**

**NOTE:** Under each subheading, View A will be shown unless otherwise indicated.

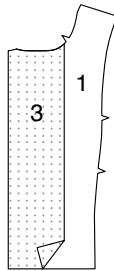
**INTERFACING**

**1.** Pin **INTERFACING** to wrong side of each matching **FABRIC** section. Fuse, following manufacturer's instructions.

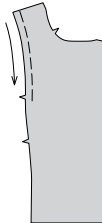


**FRONT AND BACK**

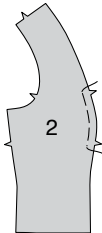
**2.** Pin **FRONT INTERFACING** (3) to **WRONG** side of **FRONT** (1), matching raw edges, as shown. Fuse, following manufacturer's instructions.



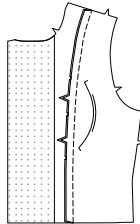
**3. STAYSTITCH** side edge of front above upper notch, in direction of arrows.



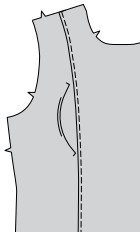
**4. EASESTITCH SIDE FRONT** (2) between notches.



**5.** With **RIGHT** sides together, pin side front to front, clipping front where necessary. Adjust ease. Baste. Stitch. Press seam toward front.



**6. TOPSTITCH** front seam.



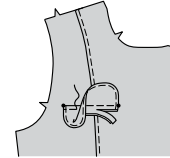
**7.** For each side, stitch one interfaced and one uninterfaced **FLAP** (4) section together, leaving upper edge open, as shown. Trim.



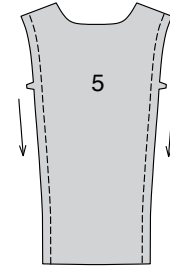
**8.** Turn. Press. Baste raw edges together. **TOPSTITCH** finished edges.



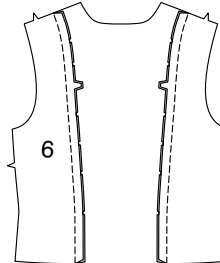
**9.** Pin flap to front, matching small dots, placing seamline along placement line, as shown. Stitch. Trim flap seam allowance to a scant 1/4" (6mm), being careful not to cut front. Turn flap down over seam. Press. **TOPSTITCH** upper edge of flap.



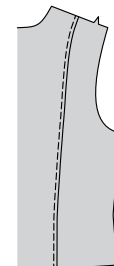
**10. STAYSTITCH** side edges of **BACK** (5), in direction of arrows.



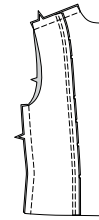
**11.** With **RIGHT** sides together, pin **SIDE BACK** (6) sections to back, clipping back where necessary. Baste. Stitch. Press seams toward back.



**12. TOPSTITCH** back seams.



**13.** Stitch front sections to back at shoulders and sides.

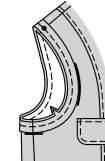


**FINISHING**

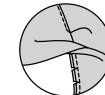
**14.** Stitch ends of **ARMHOLE FACING** (8) together. With **WRONG** sides together, fold facing in half lengthwise. Baste raw edges.



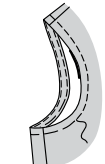
**15.** On **OUTSIDE**, pin armhole facing to armhole edge, matching notches, placing small dot at shoulder seam. Stitch in a 3/8" (1cm) seam. Trim seam.



**16. UNDERSTITCH** facing.



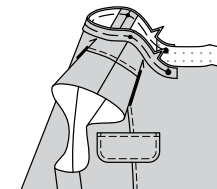
**17.** Turn facing to **INSIDE** along seam; press. Baste close to inner edge. On **OUTSIDE**, stitch along basting.



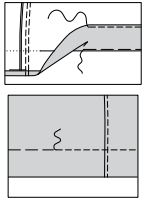
**18.** With **WRONG** sides together, fold **NECK FACING** (7) in half lengthwise. Baste raw edges.



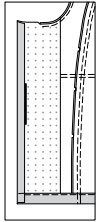
**19.** On **OUTSIDE**, pin neck facing to neck edge, matching centers, notches and large dots, placing small dots at shoulder seams. Baste in 3/8" (1cm) seam.



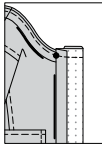
20. Turn up top hem. Baste close to fold. Turn in 1/4" (6mm) on raw edge. Baste hem in place close to upper edge. Press. **TOPSTITCH** hem along upper basting.



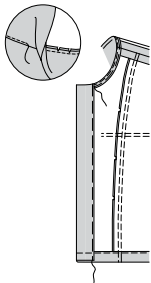
21. Turn in seam allowances on front edges. Press.



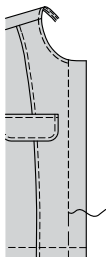
22. Turn front edges to **OUTSIDE** along foldlines. Stitch entire neck edge. Trim.



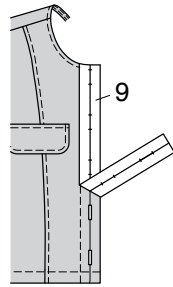
23. **UNDERSTITCH** back facing as far as possible. Turn front edges to **INSIDE** along foldlines, turning in neck facing along seam. Press. Baste close to inner edge of facing. Baste close to inner pressed edges of front.



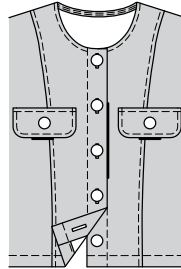
24. On **OUTSIDE**, stitch along basting.



25. Place **GUIDE FOR BUTTONHOLES** (9) on right front, having edges of tissue even with finished edges of top, as shown. Transfer markings. Make buttonholes at markings.



26. Lap right front over left, matching centers. Using buttonholes as guide, make button markings on left front. Sew buttons at markings. Sew buttons to flaps at small dots.

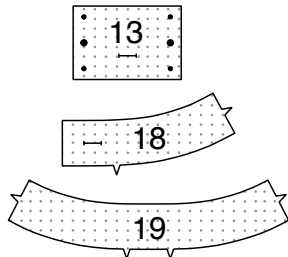


**SKIRT B, C**

**NOTE:** Under each subheading, View B will be shown unless otherwise indicated.

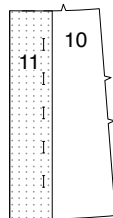
**INTERFACING**

1. Pin **INTERFACING** to wrong side of each matching **FABRIC** section. Fuse, following manufacturer's instructions.

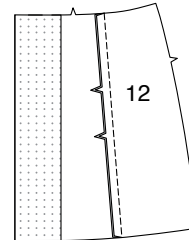


**FRONT AND BACK**

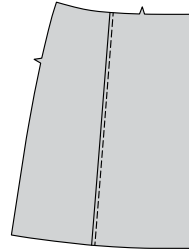
2. Pin **FRONT INTERFACING** (11) to **WRONG** side of **FRONT** (10), matching raw edges, as shown. Fuse, following manufacturer's instructions.



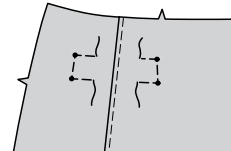
3. Stitch **SIDE FRONT** (12) to side edge of front, matching notches. Press seam toward center.



4. **TOPSTITCH** front seam.



5. **REINFORCE** inner corners of front and side front along stitching lines, pivoting at small dots.



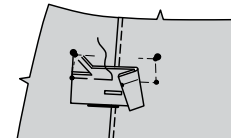
6. With **RIGHT** sides together, fold **WELT** (13) along foldline. Stitch ends. Trim.



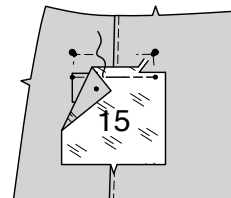
7. Turn. Press. Baste raw edges together. Make buttonhole in welt at marking.



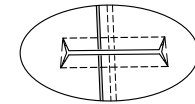
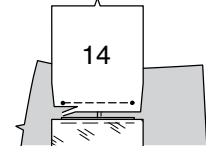
8. Pin welt to front, placing seamline along lower stitching line, matching small dots, as shown. Baste. Trim welt.



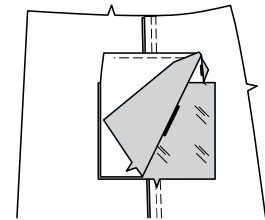
9. With **RIGHT** sides together, pin **POCKET LINING** (15) to front, over welt, matching small dots and seamline to lower stitching line. Baste. Stitch between small dots.



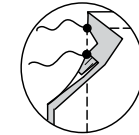
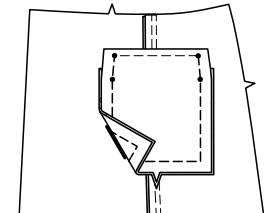
10. With **RIGHT** sides together, pin **POCKET** (14) to front, matching small dots and seamline to upper stitching line. Stitch between small dots. Slash along slash line, clipping diagonally to small dots.



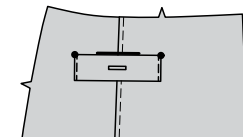
11. Turn pocket, pocket lining, and triangular ends to inside, turning welt up. Press.



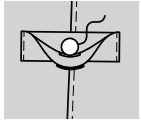
12. Stitch pocket edges together, catching triangular ends in stitching, keeping front and welt free.



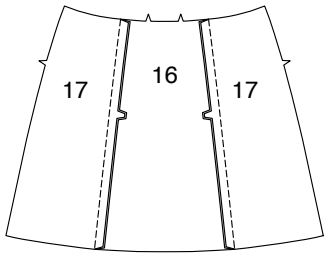
13. Pin ends of welt to front matching large dots. **EDGESTITCH** ends.



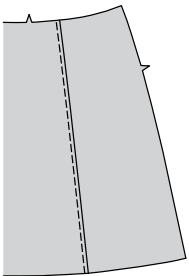
14. Open out welt. Sew button to pocket at small dot.



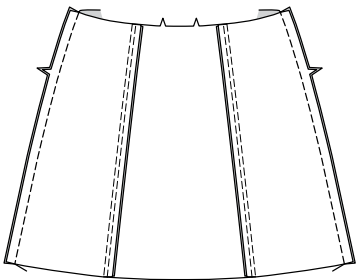
15. Stitch SIDE BACK (17) sections to side edges of BACK (16), matching notches. Press seams toward center.



16. TOPSTITCH back seams.

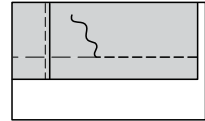
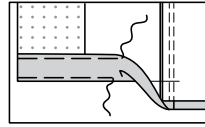


17. Stitch fronts to back at sides.

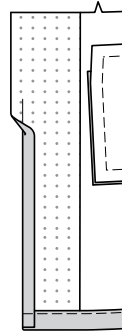


**WAISTBAND AND FINISHING**

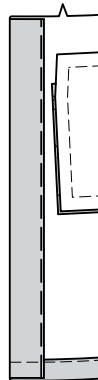
18. Turn up skirt hem. Baste close to fold. Turn in 1/4"(6mm) on raw edge. Baste hem in place close to upper edge. Press. TOPSTITCH hem along upper basting.



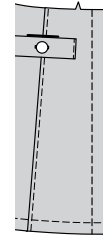
19. Turn in seam allowances on front edges. Press.



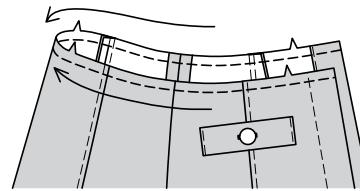
20. Turn front edges to INSIDE along foldlines. Press. Baste close to inner pressed edge.



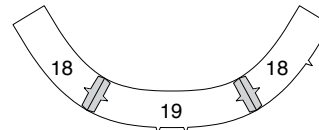
21. On OUTSIDE, stitch along basting.



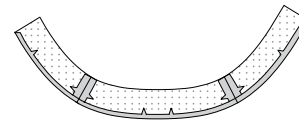
22. STAYSTITCH upper edge of skirt, in direction of arrows.



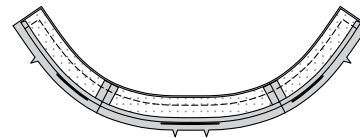
23. Stitch uninterfaced FRONT WAISTBAND (18) sections to uninterfaced BACK WAISTBAND (19) at side edges.



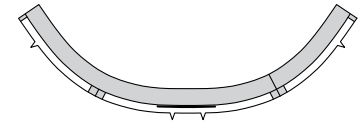
24. For facing, stitch interfaced front waistband sections to interfaced back waistband at side edges. Turn in seam allowance on lower edge of waistband facing. Press, easing in fullness where necessary. Trim pressed seam allowance to 3/8"(1cm).



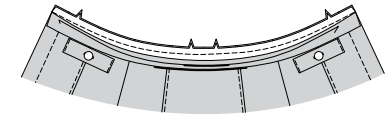
25. With RIGHT sides together, pin waistband facing to waistband. Stitch front and upper edges. Trim.



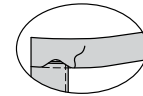
26. Turn. Press.



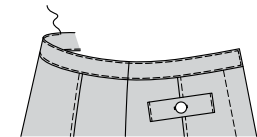
27. With RIGHT sides together, pin waistband to upper edge of skirt, matching centers and side seams, clipping skirt where necessary. Baste. Stitch, keeping pressed edge free. Trim. Press seam toward waistband.



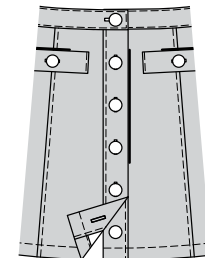
28. SLIPSTITCH pressed edge over seam.



29. EDGESTITCH waistband, as shown.



30. Make buttonholes on right front and right front waistband at markings. Lap right front over left, matching centers. Using buttonholes as guide, make button markings on left front and left front waistband. Sew buttons at markings.





# Congrats!

You've completed your sewing adventure

---

## SHARE YOUR LOOK



Post your pattern and tag us using [#simplicitypatterns](#)  
[@simplicity\\_creative\\_group](#)  
[@simplicitymccallsuk](#)  
[@simplicitymccallsaustralia](#)  
for a chance to be featured on our social media.

Look for more PDF patterns at [simplicity.com](#) or for customers outside the U.S. and Canada visit [sewdirect.com](#) and [sewdirect.com.au](#)

Have a question or need help with your sewing project contact us:  
[Simplicity.com](#)    [Sewdirect.com](#)    [Sewdirect.com.au](#)

**McCall's**  
by **design**<sub>group</sub>

McCall's ©2025 a division of IG Design Group Americas Inc. • Atlanta, GA 30342 USA [www.thedesigngroup.com](#) • All Rights Reserved. [www.mccall.com](#) • Made in the U.S.A. Fabriqué aux États-Unis.  
To be used for individual private home use only and not for commercial or manufacturing purposes. • A usage privé seulement et non à des fins commerciales ou de production en série. • Para uso privado solamente, no se puede utilizar con propósitos de comercialización o de producción en serie.