

For customers outside of the U.S. and Canada

sewdirect.com

sewdirect.com.au

Shop all the pattern brands you love @

Simplicity®.com

McCall's

M8585



Create your own designer garment with this McCall's licensed sewing pattern.  
Créez votre propre vêtement haute couture avec ce patron de couture sous licence McCall's.

Designed and  
printed in USA

Average

MISSSES' AND WOMEN'S TOP, SHORTS AND SKIRT WITH PETITE LINES

Suggested Fabrics: Chambray, Chino, Lightweight Denim, Linen Blends. Interfacing: Lightweight Fusible.

Notions: A: Five ¾" (2cm) buttons, one ¾" (2cm) vest buckle. B,C: One 7" (18cm) invisible zipper.

MISSSES' SIZES	10	12	14	16	18
EUROPEAN	36	38	40	42	44

BODY MEASUREMENTS: Select pattern size based on body measurements

Bust	32½	34	36	38	40	Ins.
Waist	25	26½	28	30	32	"
Hip	34½	36	38	40	42	"
Back-neck to waist	16	16¼	16½	16¾	17	"

Top A	45**	1¾	1¾	1¾	1¾	1¾	Yds.
	60**	1¾	1½	1½	1½	1½	"
Interfacing	20"	1	1	1	1	1	"

Shorts B	45**	1	1½	1½	1½	1½	Yds.
	60**	¾	¾	¾	¾	¾	"

Interfacing B,C	20"	¼	¼	¼	¾	¾	Yds.
-----------------	-----	---	---	---	---	---	------

Skirt C	45**	1¾	1¾	2¼	2¼	2¼	Yds.
	60**	1¼	1½	1½	1½	1½	"

WOMEN'S SIZES	20W	22W	24W	26W	28W	30W	32W	34W	36W	38W
EUROPEAN	46	48	50	52	54	56	58	60	62	64

BODY MEASUREMENTS: Select pattern size based on body measurements

Bust	42	44	46	48	50	52	54	56	58	60	Ins.
Waist	35	37	39	41½	44	46½	49	51½	53	54½	"
Hip	44	46	48	50	52	54	56	58	60	62	"
Back-neck to waist	17¼	17¾	17¾	17¾	17¾	17¾	18	18½	18½	18½	"

Top A	45**	2½	2½	2½	2½	2½	2½	2½	2½	2½	Yds.
	60**	1¾	1¾	1¾	1¾	1¾	2	2	2	2½	"
Interfacing	20"	1	1	1	1	1½	1½	1½	1½	1½	"

Shorts B	45**	1½	1½	1½	1½	1½	1¾	1¾	1¾	2	Yds.
	60**	1	1½	1½	1½	1½	1½	1½	1½	1½	"

Interfacing B,C	20"	¾	¾	¾	¾	¾	¾	¾	¾	½	Yd.
-----------------	-----	---	---	---	---	---	---	---	---	---	-----

Skirt C	45**	2½	2½	2¾	2¾	2¾	2¾	2¾	2¾	2¾	Yds.
	60**	1½	1½	1½	1¾	2¼	2¾	2½	2½	2½	"

NOTE: Please refer to the English guide for FINISHED GARMENT MEASUREMENTS.

\*with nap \*\*without nap

Moins Facile

HAUT, SHORT ET JUPE AVEC LIGNES D'AJUSTEMENT POUR PETITE POUR JEUNES FEMMES ET FEMMES

Tissus Conseillés: Chambray, Chino, Denim Léger, Lin mélangés. Entoilage: Thermocollant léger.

Mercurie: A: 5 boutons de 2cm, une boucle de 2cm pour gilet. B,C: 1 fermeture à glissière invisible de 18cm.

TAILLES (J. FEMMES)	10	12	14	16	18
FRANÇAISES	38	40	42	44	46
EUROPÉEN	36	38	40	42	44

MESURES DU CORPS: Choisissez la taille du patron basée sur les mesures du corps

Poitrine	83	87	92	97	102	cm
Taille	64	67	71	76	81	"
Hanches	88	92	97	102	107	"
Dos du cou à la taille	40.5	41.5	42	42.5	43	"

Haut A	115cm*	1.6	1.6	1.6	1.7	1.7	m
	150cm*	1.3	1.3	1.4	1.4	1.4	"
Entoilage	51cm	0.8	0.8	0.9	0.9	0.9	"

Short B	115cm*	0.9	0.9	1.0	1.0	1.0	m
	150cm*	0.7	0.7	0.7	0.8	0.8	"

Entoilage B,C	51cm	0.2	0.2	0.2	0.2	0.2	m
---------------	------	-----	-----	-----	-----	-----	---

Jupe C	115cm*	1.6	1.6	2.1	2.1	2.1	m
	150cm*	1.0	1.0	1.0	1.0	1.0	"

TAILLES (FEMMES)	20W	22W	24W	26W	28W	30W	32W	34W	36W	38W
FRANÇAISES	48	50	52	54	56	58	60	62	64	66
EUROPÉEN	46	48	50	52	54	56	58	60	62	64

MESURES DU CORPS: Choisissez la taille du patron basée sur les mesures du corps

Poitrine	107	112	117	122	127	132	137	142	147	152	cm
Taille	89	94	99	105	112	118	124	131	134	138	"
Hanches	112	117	122	127	132	137	142	147	152	157	"
Dos du cou à la taille	44	44	44.5	45	45	45.5	46	46	46.5	47	"

Haut A	115cm*	2.2	2.2	2.2	2.3	2.3	2.3	2.6	2.6	2.6	m
	150cm*	1.6	1.6	1.7	1.7	1.7	1.8	1.8	1.9	1.9	"
Entoilage	51cm	0.9	0.9	0.9	0.9	0.9	1.0	1.0	1.0	1.0	"

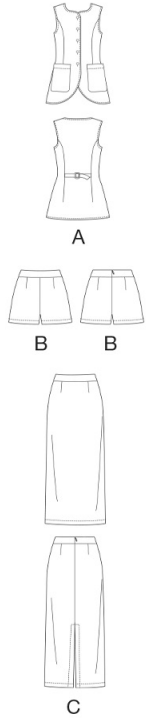
Short B	115cm*	1.3	1.3	1.3	1.3	1.4	1.5	1.6	1.7	1.8	m
	150cm*	0.9	0.9	1.0	1.0	1.1	1.3	1.3	1.3	1.3	"

Entoilage B,C	51cm	0.3	0.3	0.3	0.3	0.3	0.3	0.3	0.3	0.3	m
---------------	------	-----	-----	-----	-----	-----	-----	-----	-----	-----	---

Jupe C	115cm*	2.4	2.4	2.4	2.5	2.5	2.5	2.5	2.5	2.5	m
	150cm*	1.3	1.4	1.4	1.6	2.1	2.2	2.3	2.3	2.3	"

NOTE: S'il vous plaît, reportez vous au guide en français pour les MESURES DU VÊTEMENTS FINI.

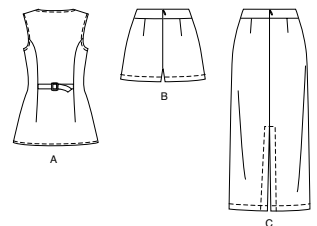
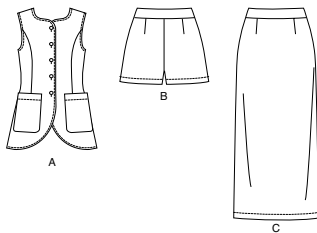
\*avec sens \*\*sans sens



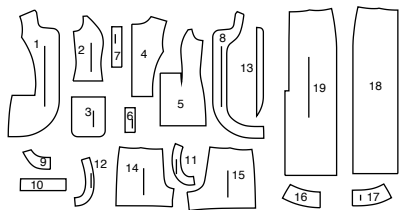
McCall's  
by design

McCall's ©2025 a division of IG Design Group Americas Inc. • Atlanta, GA 30342 USA www.thedesigngroup.com • All Rights Reserved. www.mccall.com • Made in the U.S.A. Fabriqué aux États-Unis.

To be used for individual private home use only and not for commercial or manufacturing purposes. • A usage privé seulement et non à des fins commerciales ou de production en série. • Para uso privado solamente, no se puede utilizar con propósitos de comercialización o de producción en serie.



#### 19 PATTERN PIECES

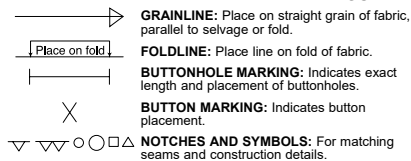


- 1 Front-A
- 2 Side Front-A
- 3 Pocket-A
- 4 Upper Back-A
- 5 Back-A
- 6 Right Back Band-A
- 7 Left Back Band-A
- 8 Front Facing-A
- 9 Back Facing-A
- 10 Lower Back Facing-A
- 11 Front Armhole Facing-A
- 12 Back Armhole Facing-A
- 13 Buttonhole Guide-A
- 14 Front-B
- 15 Back-B
- 16 Front Waistband-B,C
- 17 Back Waistband-B,C
- 18 Front-C
- 19 Back-C

Sizes	10	12	14	16	18
European	36	38	40	42	44

FINISHED GARMENT MEASUREMENTS (Includes Design and Wearing Ease)					
A Bust	35	36½	38½	40½	42½
A Waist	29½	31	33	35	37
B,C Waist	26	27½	29½	31½	33½
A Hip	37½	39	41	43	45
B,C Hip	39	40½	42½	44½	46½
Width, lower edge					
Skirt C	37½	39	41	43	45
Width, each leg					
Shorts B	25	26	27½	28½	29½
Finished back length from base of neck					
Top A	26	26¼	26½	26¾	27
Finished back length from waist					
Skirt C	36½	36½	36½	36½	36½
Finished side length from waist					
Shorts B	13	13¼	13½	13¾	14

#### PATTERN MARKINGS



**GRAINLINE:** Place on straight grain of fabric, parallel to selvage or fold.

**FOLDLINE:** Place line on fold of fabric.

**BUTTONHOLE MARKING:** Indicates exact length and placement of buttonholes.

**BUTTON MARKING:** Indicates button placement.

**NOTCHES AND SYMBOLS:** For matching seams and construction details.

Indicates the Bustline, Waistline, Hip and/or Biceps. Measurements refer to circumference of Finished Garment (Body Measurement + Wearing Ease + Design Ease). Adjust pattern if necessary. The measurement excludes pleats, tucks, darts and seam allowances.

**SEAM ALLOWANCE:** 5/8" (1.5cm) included unless otherwise indicated, but not printed on tissue.

#### ADJUST IF NECESSARY

Lengthen or Shorten at adjustment lines (==) or where indicated on pattern. If substantial length is added, you may need to purchase additional fabric.

**TO SHORTEN:** Crease along adjustment line. Make a fold half the amount needed. Tape in place.

**TO LENGTHEN:** Slash between adjustment lines. Spread amount as needed, keeping edges parallel. Tape over paper.

When Alteration lines are not on tissue, lengthen or shorten at lower edge.

**SHRINK FABRIC** if not labeled pre-shrunk. Press.

**CIRCLE LAYOUT** for View, Size, Fabric Width.

Use **WITH NAP** layout for fabrics with one-way designs, nap, pile or surface shading. Because most knits have surface shading, a with nap layout is used.

For **DOUBLE THICKNESS (WITH FOLD)** - fold fabric with right sides together.

**\* DOUBLE THICKNESS (WITHOUT FOLD)** - For fabrics with nap, fold fabric crosswise, right sides together. Mark as shown. Cut along crosswise fold of fabric (A). Turn upper layer 180° so arrows go in same direction and place over lower layer, right sides together (B).

For **SINGLE THICKNESS** - place fabric right side up. (For Fur Pile fabrics, place pile side down.)

#### CUTTING AND MARKING

★ Cut other pieces first, allowing enough fabric to cut this piece. Open fabric. For "Cut 1" pieces, cut piece once on single layer of fabric with piece face up on right side of fabric.

Pattern may have cutting lines for several sizes. Select the proper cutting line or pattern pieces for your size.

Before **CUTTING** place all pieces on fabric according to layout. Pin. (**Layouts show approximate position of pattern pieces; position may vary according to your pattern size.**) Cut **ACCURATELY**, cutting notches outward.

Before removing pattern, **TRANSFER MARKINGS** and lines of construction to Wrong Side of fabric, using the Pin and Chalk Pencil method or Tracing Paper and Dressmaker Wheel. Markings needed on right side of fabric should be thread traced.

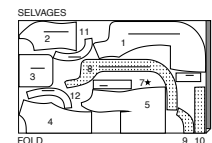
**NOTE:** Broken-line boxes (a! b! c!) in layouts represent pieces cut by measurements provided.

## CUTTING LAYOUTS

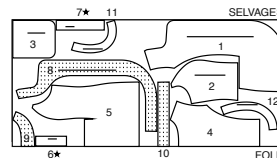
RIGHT SIDE OF PATTERN	WRONG SIDE OF PATTERN	RIGHT SIDE OF FABRIC	WRONG SIDE OF FABRIC
-----------------------	-----------------------	----------------------	----------------------

Sizes	20W	22W	24W	26W	28W	30W	32W	34W	36W	38W
European	46	48	50	52	54	56	58	60	62	64
<b>FINISHED GARMENT MEASUREMENTS (Includes Design and Wearing Ease)</b>										
A Bust	44	46	48	50½	53	55½	58	60½	63	65½
A Waist	39½	41½	43½	46	48½	51	53½	56	58½	61
B,C Waist	36	38	40	42½	45	47½	50	52½	55	57½
A Hip	46½	48½	50½	53	55½	58	60½	63	65½	68
B,C Hip	47	49	51	53½	56	58½	61	63½	66	68½
Width, lower edge										
Skirt C	47	49	51	53½	56	58½	61	63½	66	68½
Width, each leg										
Shorts B	30	31½	33	34½	36½	38½	40	41½	43½	45½
Top A	27½	28	28½	28½	28½	29	29½	29½	29½	30
Finished back length from waist	37	37	37	37	37	37	37	37	37	37
Skirt C	37	37	37	37	37	37	37	37	37	37
Finished side length from waist	14½	15	15½	15½	15½	16	16½	16½	16½	17
Shorts B										

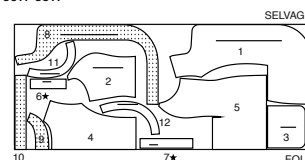
60" (150 cm)  
with nap  
sizes 10-12-14-16-18



60" (150 cm)  
with nap  
sizes 20W-22W-24W-26W-28W-30W



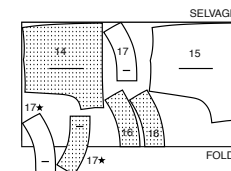
60" (150 cm)  
with nap  
sizes 32W-34W-36W-38W



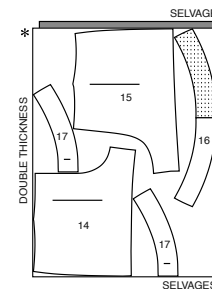
## SHORTS B

use pieces: 14 15 16 17

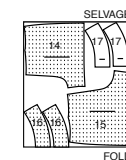
45" (115 cm)  
with nap  
sizes 10-12-14-16-18



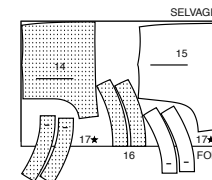
45" (115 cm)  
with nap  
sizes 20W-22W-24W-26W-28W-30W-32W-34W-36W-38W



60" (150 cm)  
with nap  
sizes 10-12-14-16-18



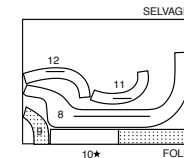
60" (150 cm)  
with nap  
sizes 20W-22W-24W-26W-28W-30W-32W-34W-36W-38W



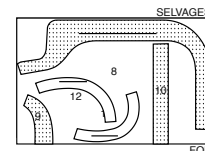
## INTERFACING A

use pieces: 8 9 10 11 12

45" (115 cm)  
without nap  
sizes 10-12-14-16-18

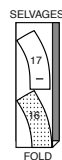
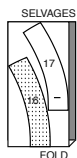


45" (115 cm)  
without nap  
sizes 20W-22W-24W-26W-28W-30W-32W-34W-36W-38W

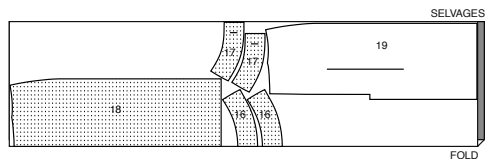
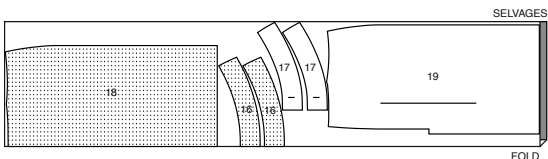
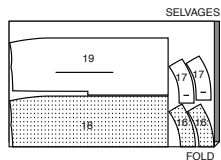
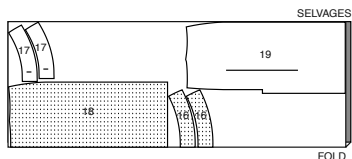
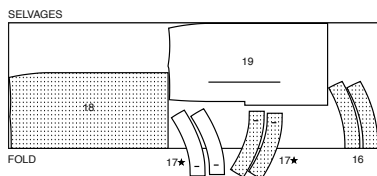
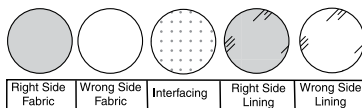


**INTERFACING B,C**

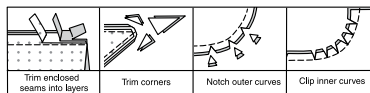
use pieces: 16 17

45" (115 cm)  
without nap  
sizes 10-12-14-16-1845" (115 cm)  
without nap  
sizes 20W-22W-24W-26W-28W-30W-32W-34W-36W-38W**SKIRT C**

use pieces: 16 17 18 19

45" (115 cm)  
with nap  
sizes 10-12-14-16-1845" (115 cm)  
with nap  
sizes 20W-22W-24W-26W-28W-30W-32W-34W-36W-38W60" (150 cm)  
with nap  
sizes 10-12-14-16-1860" (150 cm)  
with nap  
sizes 20W-22W-24W-26W-28W-30W60" (150 cm)  
with nap  
sizes 32W-34W-  
36W-38W**SEWING INFORMATION**  
**FABRIC KEY****SEAM ALLOWANCES**

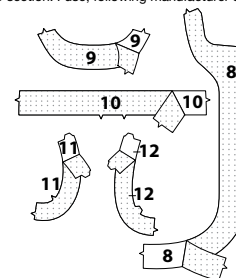
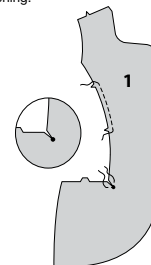
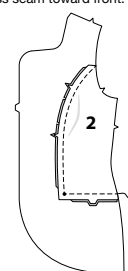
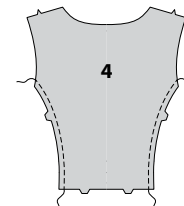
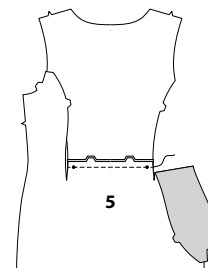
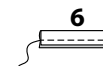
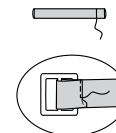
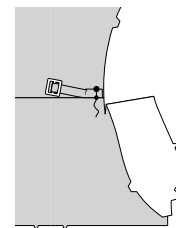
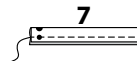
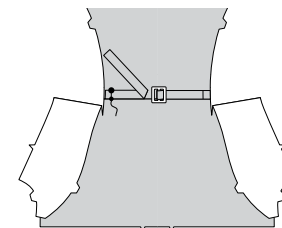
Use 5/8" (1.5cm) seam allowances unless otherwise indicated.

**PIN AND FIT**Pin or baste seams, **RIGHT SIDE TOGETHER**, matching notches. Fit garment before stitching major seams.**PRESS**

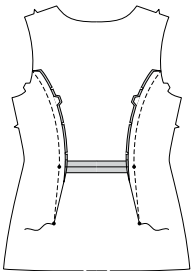
Press seam allowances flat; then open unless otherwise stated. Clip where necessary so they lie flat.

**GLOSSARY**Sewing methods in **BOLD TYPE** have Sewing Tutorial Video available. Scan QR CODE to watch videos:**EDGESTITCH** - See **how to "edgestitch"** video**FINISH** - see **Seams: "how to finish seam allowances"** video**FLAT DART** - see **Darts: "sewing flat dart"** video**INVISIBLE ZIPPER** - see **Zippers: "sewing an invisible zipper"** video**REINFORCE** - see **Machine Stitches: "how to reinforce seams"** video**STAYSTITCH** - see **Machine Stitches: "how to do stay stitching"** video**STITCH IN THE DITCH** - see **Machine Stitches: "how to stitch in the ditch"** video**TACK** - see **Hand Stitching: "how to tack"** video**TOPSTITCH** - see **Machine Stitches: "how to topstitch"** video**TRIM SEAM** - see **Seams: "how to trim, clip and layer seams"** video**UNDERSTITCH** - see **Machine Stitches: "how to understitch"** video**SEWING TUTORIALS**

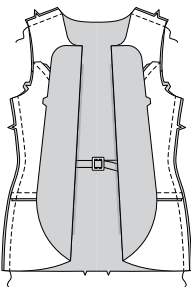
SCAN ME

Build your skills viewing short, easy-to-follow videos at  
[simplicity.com/sewingtutorials](http://simplicity.com/sewingtutorials)**SEWING DIRECTIONS****TOP A****INTERFACING****1.** Pin **INTERFACING** to wrong side of each matching **FABRIC** section. Fuse, following manufacturer's instructions.**FRONT AND BACK****2.** **STAYSTITCH** side edges of **FRONT** (1) between notches.**REINFORCE** inner corner of front sections, along stitching lines at small dot. Clip to small dot, being careful not to clip through stitching.**3.** With **RIGHT** sides together, pin **SIDE FRONT** (2) to front sections, matching notches, clipping to stay-stitching as necessary. Baste. Stitch seam, pivoting with needle in fabric at small dot. Press seam toward front.**4.** **STAYSTITCH** side edges of **UPPER BACK** (4).**5.** With **RIGHT** sides together, pin upper back to **BACK** (5) matching small dots and notches. Stitch. Press seam open.**6.** With **RIGHT** sides together, fold **RIGHT BACK BAND** (6) in half lengthwise. Stitch long edge in a 3/8" (1cm) seam.**7.** Turn band **RIGHT** side out. Press. Baste raw edges together. Slip straight end of band through bar of buckle. Turn under raw edge along center back, turning under 1/4" (6mm) on end; stitch close to inner pressed edge.**8.** On **OUTSIDE**, pin band to **RIGHT** side of back matching small and large dots. Baste.**9.** With **RIGHT** sides together, fold **LEFT BACK BAND** (7) in half lengthwise. Stitch outer edge, in a 3/8" (1cm) seam, leaving end with large and small dots open.**10.** Turn band **RIGHT** side out. Press. Baste raw edges together. On **OUTSIDE**, pin band to **LEFT** side of back matching small and large dots. Baste.

**11.** With **RIGHT** sides together, fold each half of back along center of dart seam, bringing raw edges together above small dot matching broken lines below small dot. Clip upper back to stay-stitching as necessary. Baste seam to point. Stitch. Press seam toward back.

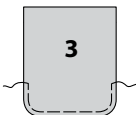


**12.** With **RIGHT** sides together, stitch front to back at shoulders and sides.

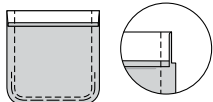


### POCKETS

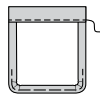
**13.** Stitch curved edges of **POCKET** (3) 3/8" (1cm) from raw edge, using long machine stitches, as shown.



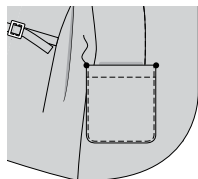
**14.** Turn under 1/4" (6mm) on upper raw edge. Turn upper edge to **OUTSIDE** along foldline; stitch ends. Trim as shown.



**15.** Turn upper edge of pocket to **INSIDE**, turning in seam allowances on remaining edges; pull threads to ease in fullness on curves. Press.

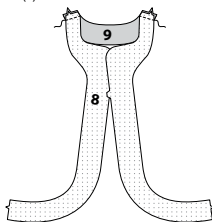


**16.** Pin pocket to front and back, over side seam, matching large dots. **EDGE STITCH** side and lower edges of pocket.

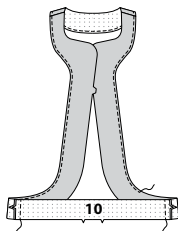


### FINISHING

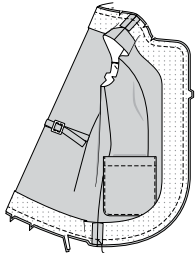
**17.** With **RIGHT** sides together, stitch **FRONT FACING** (8) to **BACK FACING** (9) at shoulder seams.



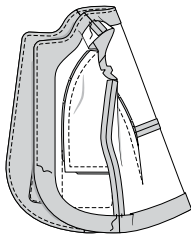
**18.** With **RIGHT** sides together, stitch facing sections to **LOWER BACK FACING** (10) at sides. **FINISH** unmarked edge of facing.



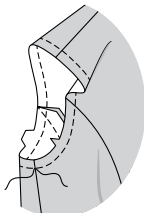
**19.** With **RIGHT** sides together, pin facing to garment matching seams and notches. Stitch outer edge of garment. **TRIM SEAM.**



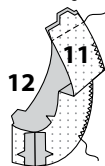
**20.** Turn facing to **INSIDE**, press. **TACK** facing at seams to secure. **TOPSTITCH** outer edge of garment.



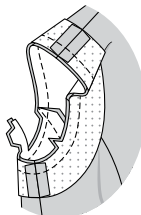
**21.** **STAYSTITCH** armhole edges of garment.



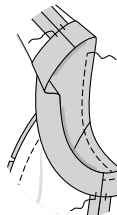
**22.** With **RIGHT** sides together, stitch ends of **FRONT ARMHOLE FACING** (11) and **BACK ARMHOLE FACING** (12) together. **FINISH** unnotched edge.



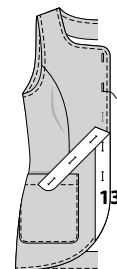
**23.** Pin facing to armhole edge, matching shoulder and side seams. Stitch. **TRIM SEAM.**



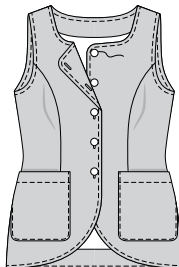
**24.** Turn armhole facing to **INSIDE**; press. **TACK** facing at seams to secure. **TOPSTITCH** armhole edge.



**25.** Place **BUTTONHOLE GUIDE** (13) on **RIGHT** front, having edges of tissue even with finished edges of garment, as shown. Transfer markings. Make buttonholes at markings.



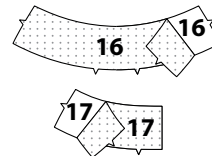
**26.** Lap opening edges, matching centers. Using buttonholes as guides, make button markings on **LEFT** front. Sew buttons at markings.



### SHORTS B

#### INTERFACING

**1.** Pin **INTERFACING** to wrong side of each matching **FABRIC** section. Fuse, following manufacturer's instructions.

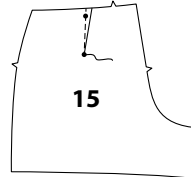


#### FRONT AND BACK

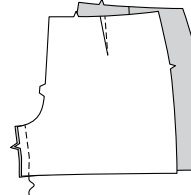
**2.** Stitch **FLAT DARTS** in **FRONT** (14) sections. Press darts toward center.



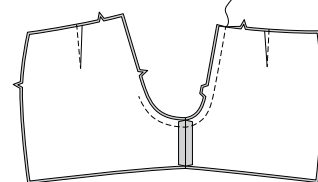
**3.** Stitch **FLAT DARTS** in **BACK** (15) sections. Press darts toward center.



**4.** Stitch front to back at inner leg seams.



**5.** With **RIGHT** sides together, pin center seam, matching inner leg seams and notches. Stitch crotch seam ending within 3" (7.5cm) of notch in back. To reinforce seam, stitch again over first stitching.

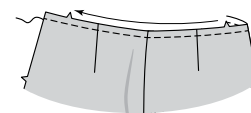


**6.** With **RIGHT** sides together, stitch front to back at side seams.

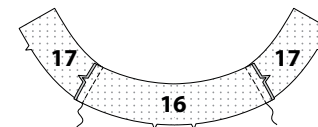


### WAISTBAND

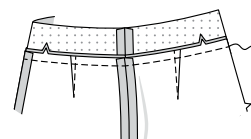
**7.** **STAYSTITCH** upper edge of shorts, in direction of arrows.



**8.** With **RIGHT** sides together, stitch interfaced **FRONT WAISTBAND** (16) to **BACK WAISTBAND** (17) sections at side seams, matching notches.



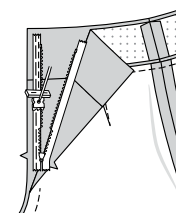
**9.** With **RIGHT** sides together, pin waistband to shorts, matching centers notches and side seams. Stitch. Trim seam. Press seam toward waistband.



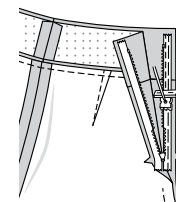
### ZIPPER

**NOTE:** Stitch **INVISIBLE ZIPPER** using an adjustable zipper foot.

**10.** Open the zipper and press the tape using a cool iron. On **OUTSIDE**, pin **RIGHT** side of the zipper face down on the **RIGHT** side of the zipper opening. Have the coil along the seam line, the tape within the seam allowance and the top stop 3/4" (2cm) below upper edge, as shown. Hand-baste along center of the tape. Position zipper foot at the top of the zipper with **RIGHT** groove of the foot over coil. Stitch along tape to the notch. Back-stitch to reinforce.

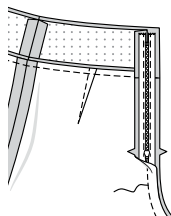
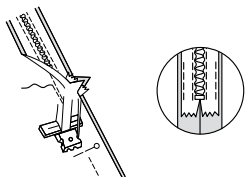


**11.** Pin the remaining half of the zipper to the **LEFT** side of the zipper opening in same manner. Make sure the upper and lower edges of the garment are even. Hand-baste along the center of the tape. Position zipper foot at the top of the zipper with **LEFT** groove of the foot. Stitch along tape to the notch. Back-stitch to reinforce.



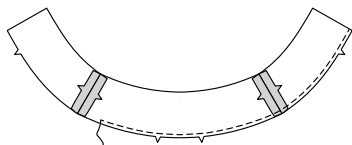


**12.** Close zipper and check that it is invisible from the OUTSIDE. Pull the free ends of the zipper tape away from the seam allowance. Pin remaining center back seam together below zipper. Position zipper foot all the way to the LEFT so the needle goes down through the outer notch of the foot. Start stitching seam 1/4" (6mm) above lowest stitch and slightly to the LEFT. Stitch seam connecting to previous stitching. If you prefer, open out each seam allowance at end of zipper and stitch tape to seam allowance.

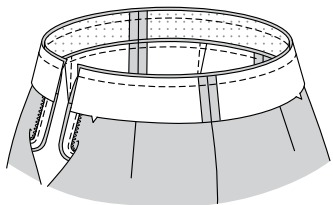


## FINISHING

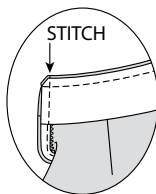
**13.** Stitch side seams of waistband facing sections. **FINISH** lower notched edge of facing.



**14.** Open out center back opening edges of shorts, rolling the zipper teeth away from the opening edge. With RIGHT sides together, pin facing to waistband, matching centers and side seams. Stitch upper edge. **TRIM SEAM**; clip curves.

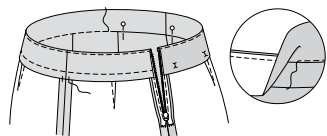


**15.** Pin back opening edges together. Using an adjustable zipper foot, stitch 1/2" (1.3cm) from back edges, keeping zipper teeth free. Trim corners. Do not trim center back edges.

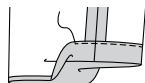


**16.** **UNDERSTITCH** facing, as far as possible.

Turn facing and back edges to INSIDE, rolling zipper teeth back in place; press. Pin pressed edge of facing over seam, placing pins on OUTSIDE. On OUTSIDE, **STITCH IN THE DITCH** or "groove of seam, catching in pressed edge on INSIDE. To keep the facing from rolling to OUTSIDE, secure it at the seam allowances by tacking it by hand.



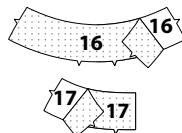
**17.** Turn up hem on lower edge of shorts. Turn in 1/4" (6mm) on raw edge. Baste hem in place close to upper edge. Press. **TOPSTITCH** hem along upper basting.



## SKIRT C

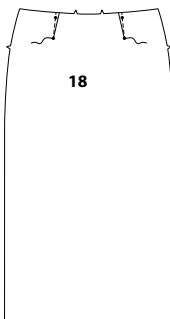
## INTERFACING

**1.** Pin **INTERFACING** to wrong side of each matching **FABRIC** section. Fuse, following manufacturer's instructions.

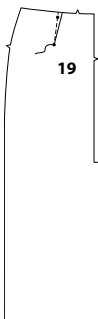


## FRONT AND BACK

**2.** Stitch **FLAT DARTS** in **FRONT** (18) sections. Press darts toward center.

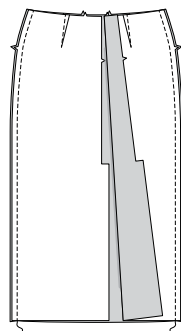


**3.** Stitch **FLAT DARTS** in **BACK** (19) sections. Press darts toward center.

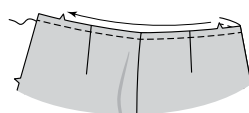


## WAISTBAND

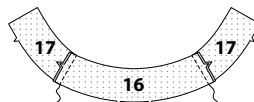
**4.** Stitch front to back at sides.



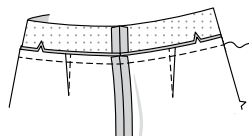
**5.** **STAYSTITCH** upper edge of skirt, in direction of arrows.



**6.** With **RIGHT** sides together, stitch interfaced **FRONT WAISTBAND** (16) to **BACK WAISTBAND** (17) sections at side seams, matching notches.



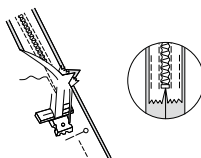
**7.** With **RIGHT** sides together, pin waistband to skirt, matching centers notches and side seams. Stitch. Trim seam. Press seam toward waistband.



## ZIPPER

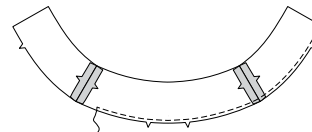
**NOTE:** Stitch **INVISIBLE ZIPPER** using an adjustable zipper foot.

**8.** Apply zipper in same manner as for shorts, see steps 10 and 11. Close zipper and check that it is invisible from the OUTSIDE. Pull the free ends of the zipper tape away from the seam allowance. Pin remaining center back seam together below zipper. Position zipper foot all the way to the LEFT so the needle goes down through the outer notch of the foot. Start stitching seam 1/4" (6mm) above lowest stitch and slightly to the LEFT. Stitch seam for about 3" (7.5cm). Stitch remainder of seam using your regular presser foot, ending at large dot. If you prefer, open out each seam allowance at end of zipper and stitch tape to seam allowance.

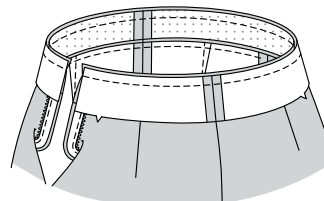


## FINISHING

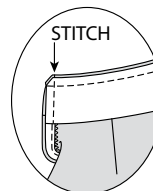
**9.** Stitch side seams of waistband facing sections. **FINISH** lower notched edge of facing.



**10.** Open out center back opening edges of skirt, rolling the zipper teeth away from the opening edge. With **RIGHT** sides together, pin facing to waistband, matching centers and side seams. Stitch upper edge. **TRIM SEAM**; clip curves.

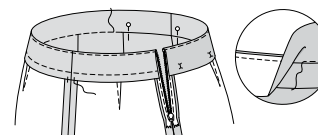


**11.** Pin back opening edges together. Using an adjustable zipper foot, stitch 1/2" (1.3cm) from back edges, keeping zipper teeth free. Trim corners. Do not trim center back edges.

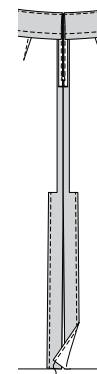


**12.** **UNDERSTITCH** facing, as far as possible.

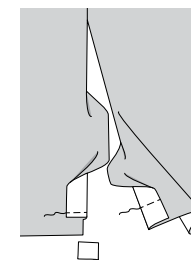
Turn facing and back edges to INSIDE, rolling zipper teeth back in place; press. Pin pressed edge of facing over seam, placing pins on OUTSIDE. On OUTSIDE, **STITCH IN THE DITCH** or "groove of seam, catching in pressed edge on INSIDE. To keep the facing from rolling to OUTSIDE, secure it at the seam allowances by tacking it by hand.



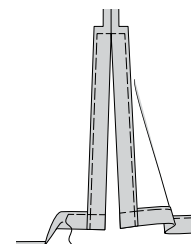
**13.** **FINISH** outer edges of back self-facing. Turn back self-facings to INSIDE along foldlines; press.



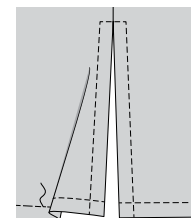
**14.** Turn self-facings to outside along foldline. Stitch across facing 1-1/2" (3.8cm) above raw edge. Trim, as shown.



**15.** Turn self-facing to INSIDE, turning up hem. Turn in 1/4" (6mm) on raw edge. Baste hem in place close to upper edge, continuing across vent opening edges. Press. Baste 1/4" (6mm) from raw edge of facing.



**16.** On OUTSIDE, **TOPSTITCH** hem and vent opening as basted.





# Congrats!

You've completed your sewing adventure

---

## SHARE YOUR LOOK



Post your pattern and tag us using [#simplicitypatterns](#)  
[@simplicity\\_creative\\_group](#)  
[@simplicitymccallsuk](#)  
[@simplicitymccallsaustralia](#)  
for a chance to be featured on our social media.

Look for more PDF patterns at [simplicity.com](#) or for customers outside the U.S. and Canada visit [sewdirect.com](#) and [sewdirect.com.au](#)

Have a question or need help with your sewing project contact us:  
[Simplicity.com](#)    [Sewdirect.com](#)    [Sewdirect.com.au](#)

**McCall's**  
by **design**<sub>group</sub>

McCall's ©2025 a division of IG Design Group Americas Inc. • Atlanta, GA 30342 USA [www.thedesigngroup.com](#) • All Rights Reserved. [www.mccall.com](#) • Made in the U.S.A. Fabriqué aux États-Unis.  
To be used for individual private home use only and not for commercial or manufacturing purposes. • A usage privé seulement et non à des fins commerciales ou de production en série. • Para uso privado solamente, no se puede utilizar con propósitos de comercialización o de producción en serie.