

McCall's

M8584



A

B

C

Designed and printed in USA



This sewing pattern includes multiple view options with simple instructions. Show your make!

Ce patron de couture comprend plusieurs modèles avec des instructions faciles! Montrez votre réalisation!

Average										
MISSES' SKIRT IN TWO LENGTHS AND BELT										
Suggested Fabrics: Flannel, Lightweight Denim, Twill, Wool Blends. <b>Interfacing:</b> Medium weight fusible.										
Notions: <b>A,B,C:</b> One 7" (18cm) invisible zipper. <b>Also for B,C:</b> One 3" (8cm) prong buckle to cover, five ¼" (6mm) grommets.										
Sizes	8	10	12	14	16	18	20	22	24	
European	34	36	38	40	42	44	46	48	50	
BODY MEASUREMENTS: Select pattern size based on body measurements										
Bust	31½	32½	34	36	38	40	42	44	46	Ins. "
Waist	24	25	26½	28	30	32	34	37	39	"
Hip-9" below waist	33½	34½	36	38	40	42	44	46	48	"
Back-neck to waist	15¾	16	16¼	16½	16¾	17	17¼	17½	17¾	"
Skirt A	60"*	1½	1½	1¼	1¼	1¼	1¼	1¼	1¼	Yds.
Interfacing	20"* - ⅞ yd.									
Skirt and Belt B	60"*	1½	1½	2½	2½	2¼	2¼	2¼	2¼	Yds.
Interfacing B,C	20"* - 2½ yds.									
Skirt and Belt C	60"*	2¾	2¾	3	3½	3½	3½	3½	3¼	Yds.
FINISHED GARMENT MEASUREMENTS (Includes Design and Wearing Ease)										
A,B,C Hip	35¼	36¼	37¾	39¾	41¾	43¾	45¾	47¾	49¾	Ins.
Finished back length from waist										
Skirt A, B (sits 1½" below waist)	15½	15½	15½	15½	15½	15½	15½	15½	15½	Ins.
Skirt C (sits 1½" below waist)	31½	31½	31½	31½	31½	31½	31½	31½	31½	Ins.
*with nap    **without nap										

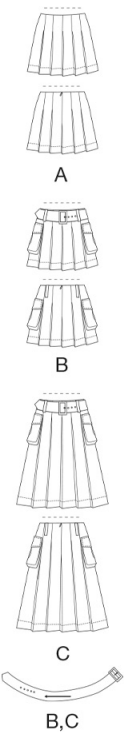
\*with nap    \*\*without nap

Moins Facile

JUPE EN DEUX LONGUEURS ET CEINTURE POUR JEUNES FEMMES										
Tissus Conseillés: Flanelle, Denim léger, Twill, Lainages. <b>Entoilage:</b> Thermocollant de poids moyen.										
Mercerie: <b>A,B,C:</b> 1 fermeture à glissière invisible de 18cm. <b>Aussi pour B,C:</b> 1 boucle ardillon à couvrir de 8cm, 5 œillets de 6mm.										
Tailles	8	10	12	14	16	18	20	22	24	
Françaises	36	38	40	42	44	46	48	50	52	
Européen	34	36	38	40	42	44	46	48	50	
MESURES DU CORPS: Choisissez la taille du patron basée sur les mesures du corps										
Poitrine	80	83	87	92	97	102	107	112	117	cm
Taille	61	64	67	71	76	81	87	94	99	"
Hanches (23cm au-dessous de la taille)										
	85	88	92	97	102	107	112	117	122	cm
Dos du cou à la taille	40	40.5	41.5	42	42.5	43	44	44.5	45	"
Jupe A	150cm* 1.0	1.0	1.1	1.1	1.1	1.1	1.1	1.1	1.1	m
Entoilage	51cm - 0.7m									
Jupe et ceinture B										
	150cm* 1.7	1.7	1.9	1.9	1.9	2.1	2.1	2.1	2.1	m
Entoilage B,C	51cm - 2.3m									
Jupe et ceinture C										
	150cm* 2.5	2.5	2.7	2.7	2.9	2.9	2.9	2.9	3.0	m
MESURES DES VÊTEMENTS FINI (Motif et aisance de port compris)										
A,B,C Hanches	90	92	96	101	106	111	116	121	126	cm
Longueur finie – dos, taille à l'ourlet										
Jupe A,B (repose 4cm dessous de la taille)	39	39	39	39	39	39	39	39	39	cm
Jupe C (repose 4cm dessous de la taille)	80	80	80	80	80	80	80	80	80	cm

\*avec sens    \*\*sans sens

\*avec sens    \*\*sans sens



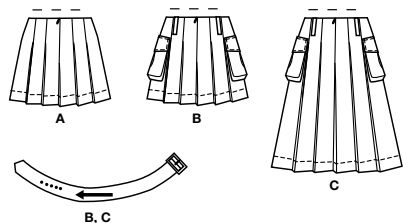
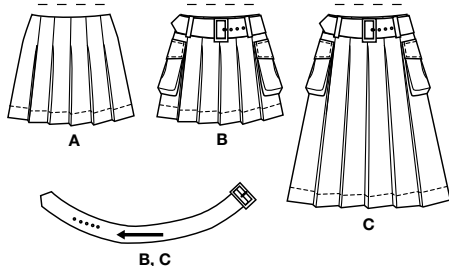
M8584

Page 1 of 4

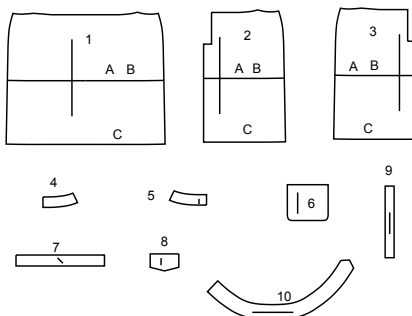
McCall's®

English

1-800-782-0323

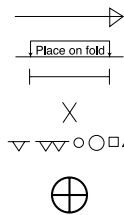


## 10 PATTERN PIECES



- 1 FRONT - A,B,C  
2 RIGHT BACK - A,B,C  
3 LEFT BACK - A,B,C  
4 FRONT FACING - A,B,C  
5 BACK FACING - A,B,C  
6 POCKET - B,C  
7 GUSSET - B,C  
8 FLAP - B,C  
9 CARRIER - B,C  
10 BELT - B,C

## PATTERN MARKINGS



**GRAINLINE:** Place on straight grain of fabric, parallel to selvage or fold.

**FOLDLINE:** Place line on fold of fabric.

**BUTTONHOLE MARKING:** Indicates exact length and placement of buttonholes.

**BUTTON MARKING:** Indicates button placement.

**NOTCHES AND SYMBOLS:** For matching seams and construction details.

Indicates the Bustline, Waistline, Hip and/or Biceps. Measurements refer to circumference of Finished Garment (Body Measurement + Wearing Ease + Design Ease). Adjust pattern if necessary. The measurement excludes pleats, tucks, darts and seam allowances.

**SEAM ALLOWANCE:** 5/8" (1.5cm) included unless otherwise indicated, but not printed on tissue.

## ADJUST IF NECESSARY

Lengthen or Shorten at adjustment lines (==) or where indicated on pattern. If substantial length is added, you may need to purchase additional fabric.

**TO SHORTEN:** Crease along adjustment line. Make a fold half the amount needed. Tape in place.

**TO LENGTHEN:** Slash between adjustment lines. Spread amount as needed, keeping edges parallel. Tape over paper.

When Alteration lines are not on tissue, lengthen or shorten at lower edge.

## CUTTING AND MARKING

**SHRINK FABRIC** if not labeled pre-shrunk. Press.

**CIRCLE LAYOUT** for View, Size, Fabric Width.

Use **WITH NAP** layout for fabrics with one-way designs, nap, pile or surface shading. Because most knits have surface shading, a with nap layout is used.

For **DOUBLE THICKNESS (WITH FOLD)** - fold fabric with right sides together.

**\* DOUBLE THICKNESS (WITHOUT FOLD)** - For fabrics with nap, fold fabric crosswise, right sides together. Mark as shown. Cut along crosswise fold of fabric (A). Turn upper layer 180° so arrows go in same direction and place over lower layer, right sides together (B).

For **SINGLE THICKNESS** - place fabric right side up. (For Fur Pile fabrics, place pile side down.)

★ Cut other pieces first, allowing enough fabric to cut this piece. Open fabric. For "Cut 1" pieces, cut piece once on single layer of fabric with piece face up on right side of fabric.

Pattern may have cutting lines for several sizes. Select the proper cutting line or pattern pieces for your size.

Before **CUTTING** place all pieces on fabric according to layout. Pin. (**Layouts show approximate position of pattern pieces; position may vary according to your pattern size.**) Cut **ACCURATELY**, cutting notches outward.

Before removing pattern, **TRANSFER MARKINGS** and lines of construction to Wrong Side of fabric, using the Pin and Chalk Pencil method or Tracing Paper and Dressmaker Wheel. Markings needed on right side of fabric should be thread traced.

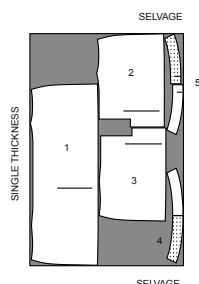
**NOTE:** Broken-line boxes (a! b! c!) in layouts represent pieces cut by measurements provided.

## CUTTING LAYOUTS

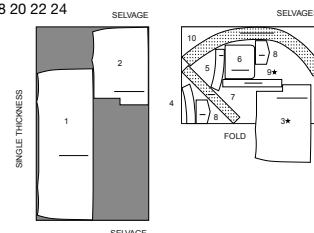
RIGHT SIDE OF PATTERN	WRONG SIDE OF PATTERN	RIGHT SIDE OF FABRIC	WRONG SIDE OF FABRIC

## SKIRT A

USE PIECES 1 2 3 4 5

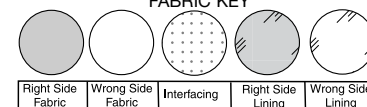
60" (150CM)  
WITH NAP  
ALL SIZES

60" (150CM)

WITH NAP  
SIZES 12 14 16 18 20 22 24

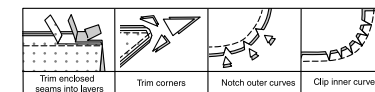
## SEWING INFORMATION

## FABRIC KEY



## SEAM ALLOWANCES

Use 5/8" (1.5cm) seam allowances unless otherwise indicated.



## PIN AND FIT

Pin or baste seams, **RIGHT SIDE TOGETHER**, matching notches. Fit garment before stitching major seams.

## PRESS

Press seam allowances flat; then open unless otherwise stated. Clip where necessary so they lie flat.

## GLOSSARY

Sewing methods in **BOLD TYPE** have Sewing Tutorial Video available. Scan **QR CODE** to watch videos:

**CATCH STITCH** - See Hand Stitching: "hand sewing a catch stitch" video.

**EDGESTITCH** - See Machine Stitches: "how to sew an edgestitch" video.

**INVISIBLE ZIPPER** - See Zipper: "sewing an invisible zipper" video.

**SLIPSTITCH** - See Hand Stitching: "how to slip stitch" video.

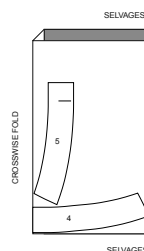
**TOPSTITCH** - See Machine Stitches: "how to topstitch" video.

**TRIM SEAM** - See Seams: "how to trim, clip and layer seams" video.

**UNDERSTITCH** - See Machine Stitches: "how to understitch" video.

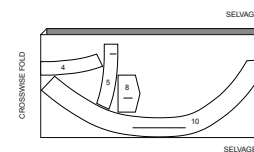
## INTERFACING A

USE PIECES 4 5

20" (51CM)  
ALL SIZES

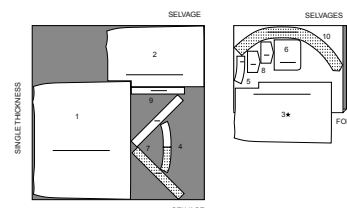
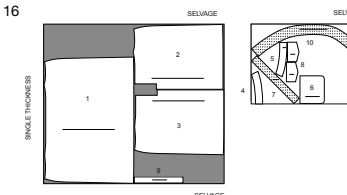
## INTERFACING B,C

USE PIECES 4 5 8 10

20" (51CM)  
ALL SIZES

## SKIRT AND BELT C

USE PIECES 1 2 3 4 5 6 7 8 9 10

60" (150CM)  
WITH NAP  
SIZES 8 1060" (150CM) WITH NAP  
SIZES 12 14 16  
18 20 22 24

## SEWING TUTORIALS



Build your skills viewing short, easy-to-follow videos at [simplicity.com/sewingtutorials](http://simplicity.com/sewingtutorials)

PATTERN PIECES WILL BE IDENTIFIED BY NUMBERS THE FIRST TIME THEY ARE USED.

STITCH 5/8" (1.5CM) SEAMS WITH RIGHT SIDES TOGETHER UNLESS OTHERWISE STATED.

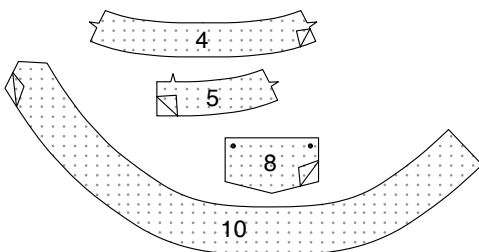
## SKIRT A, B, C

**NOTE:** Skirt is designed to be worn 1-1/2" (3.8cm) below waist.

## INTERFACING

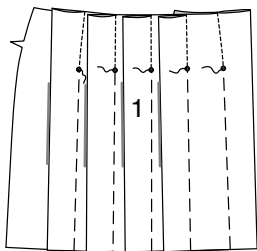
**1.** Pin interfacing to WRONG side of FRONT FACING (4) and BACK FACING (5), and additionally for Views B and C, FLAP (8) and BELT (10).

Fuse interfacing in place following manufacturer's directions.

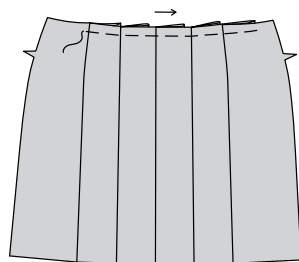


## FRONT AND BACK PLEATS

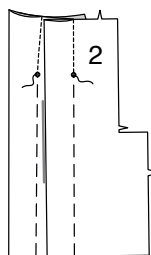
**2.** To make pleats on FRONT (1), on INSIDE, fold fabric with right sides together, bringing small dots together. Stitch along broken line from upper edge to small dot. Baste along solid lines from small dot to lower edge.



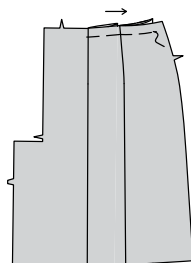
**3.** Press pleats to one side in the direction of the arrows. On OUTSIDE, baste along upper edge.



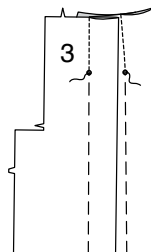
**4.** To make pleats on RIGHT BACK (2), on INSIDE, fold fabric with right sides together, bringing small dots together. Stitch along broken line from upper edge to small dot. Baste along solid lines from small dot to lower edge.



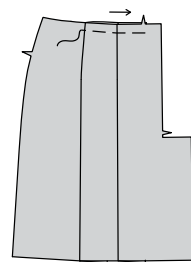
**5.** Press pleats to one side in the direction of the arrows. On OUTSIDE, baste along upper edge.



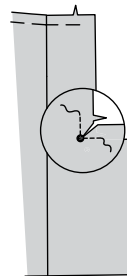
**6.** To make pleats on LEFT BACK (3), on INSIDE, fold fabric with right sides together, bringing small dots together. Stitch along broken line from upper edge to small dot. Baste along solid lines from small dot to lower edge.



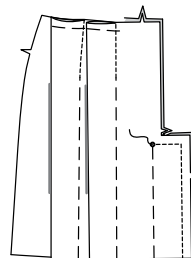
**7.** Press pleats to one side in the direction of the arrows. On OUTSIDE, baste along upper edge.



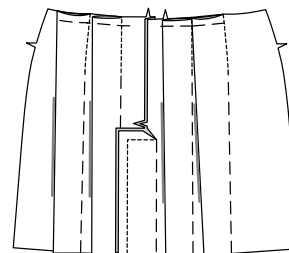
**8.** To reinforce left back at inner small dot, stitch along seam line for about 1" (2.5cm) each side of small dot, stitching through dot, as shown. Clip to stitching at dot.



**9.** With RIGHT sides together and raw edges even, pin back sections together at back edges. Stitch double notched edge of extension from lower edge to small dot, back-stitching at dot to reinforce the seam. Baste along solid line from lower edge to small dot.

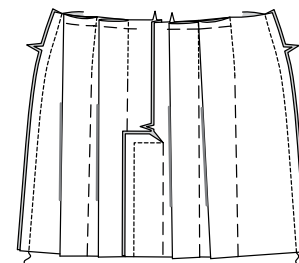


**10.** Press seam and extension toward right back.



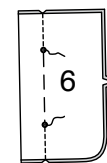
## SIDE SEAMS

**11.** With RIGHT sides together and raw edges even, pin front to back sections at side edges. Stitch.

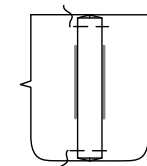


## POCKETS AND FLAPS B, C

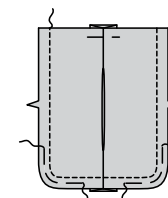
**12.** To make inverted pleat on POKET (6), on INSIDE, bring solid and broken lines together, matching small dots. Stitch along broken lines to small dots. Baste along solid line between small dots.



**13.** Press pleat flat bringing stitching to center. Baste across upper and lower edges. Remove solid line basting.



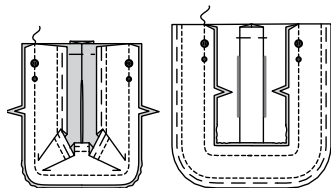
**14.** Stitch along seam line on raw edges of pocket. To ease curved edge, stitch 1/4" (6mm) INSIDE the seamline, using a long machine-stitch.



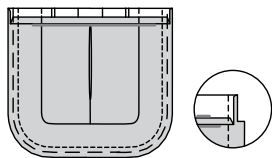
**15.** To ease unnotched long edge of GUSSET (7), stitch along seamline on raw edges. Stitch again 1/4" (6mm) INSIDE the seamline, using a long machine-stitch.



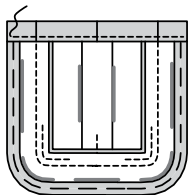
**16.** With RIGHT sides together and raw edges even, pin gusset to pocket, matching small dots, large dots and notches, pulling up ease stitches on pocket to shape the curve. Stitch. Press seam toward pocket.



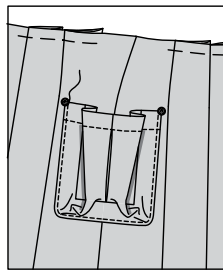
**17.** Press under 1/4" (6mm) on upper edge of pocket and gusset. Turn upper edge to OUTSIDE along fold line, forming facing. Stitch along seamline on raw edges across facing. Trim seam allowance in the facing area to 1/4" (6mm).



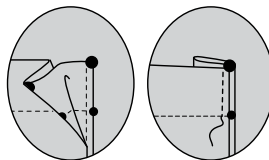
**18.** Turn corners RIGHT side out, turning facing to INSIDE; press, pressing under raw edges along stitching. Stitch facing close to inner edge.



**19.** On OUTSIDE, pin gusset to front and back along pocket line, matching large dots, pulling up ease along curves. **EDGESTITCH** close to side and lower edges.



**20.** Fold gusset through center, bringing large and small dots together. Press. **EDGESTITCH** side edges of pocket through all thicknesses between the small and large dots, back-stitching to reinforce.

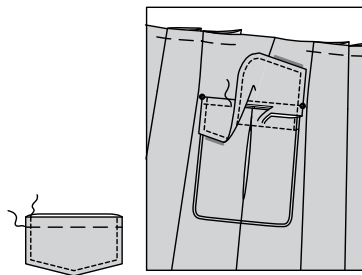


**21.** With RIGHT sides together, stitch facing to FLAP (8), leaving edge with small dots open. **TRIM** seam.



**22.** Turn flap; press. Machine-baste 5/8" (1.5cm) from raw edge. On OUTSIDE, **TOPSTITCH** 1/4" (6mm) from finished edge.

On OUTSIDE, pin flap to front and back, placing basting along flap line, matching small dots, as shown. Stitch along basting. Trim close to stitching. Turn flap down; press. **TOPSTITCH** 1/4" (6mm) from upper edge.



## CARRIERS B, C

**23.** Fold CARRIER (9) in half, lengthwise with WRONG sides together. Press, setting in a crease.



**24.** Open out long edges of carrier and turn them to WRONG side 1/2" (1.3cm). Press.

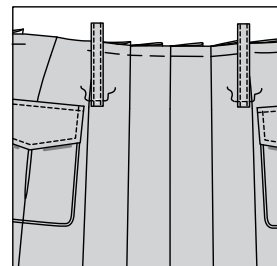


**25.** Fold carrier in half lengthwise, bringing pressed edges together. **EDGESTITCH** close to both long edges.

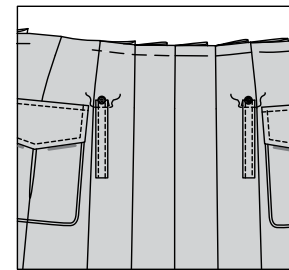


**26.** Cut carrier into four sections, each 4-3/4" (12cm) long.

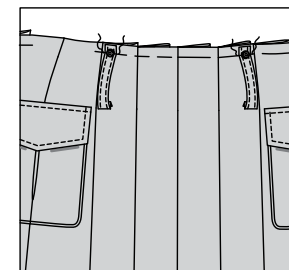
On OUTSIDE, place carriers on skirt between the large dots, with lower raw edge of each centered on lower large dots. Stitch carrier to skirt across lower end 1/4" (6mm) from raw edge.



**27.** Turn carriers down along stitching. Stitch again across carriers over the lower large dots, encasing the raw edge of each.



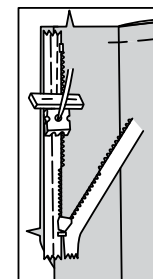
**28.** Press carriers up and over upper large dots, bringing raw edges even with upper edge of skirt. Baste along seamline.



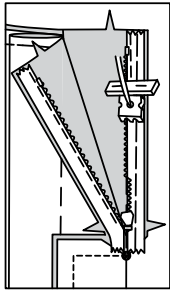
## ZIPPER

**NOTE:** Stitch the **INVISIBLE ZIPPER** using an invisible zipper foot. Before you begin, be sure to line up your needle with the center of the invisible zipper foot or you may break your needle. When the coils are to the LEFT of the raw edge use the LEFT groove and when the coils are to the RIGHT of the raw edge use the RIGHT groove.

**29.** Open the zipper and press the tape flat on the WRONG side unrolling the coils. Do not press the coils. (Use a low iron setting.) On OUTSIDE, pin RIGHT side of the zipper face down on the RIGHT side of the zipper opening. Have the coil along the seam line, the tape within the seam allowance and the top stop 3/4" (2cm) below upper edge, as shown. Hand-baste along center of the tape. Position zipper foot at the top of the zipper with RIGHT groove of the foot over coil. Stitch along tape to the notch. Back-stitch to reinforce.

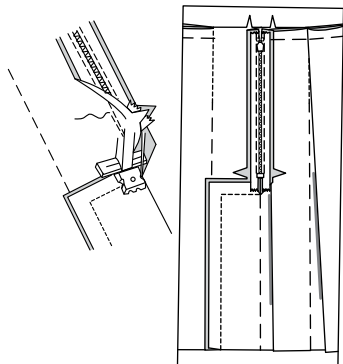


**30.** Pin the remaining half of the zipper to the LEFT side of the zipper opening in same manner. Make sure the upper and lower edges of the garment are even. Hand-baste along the center of the tape. Position zipper foot at the top of the zipper with LEFT groove over the coil. Stitch along tape to the notch. Back-stitch to reinforce.

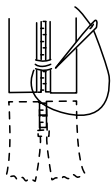


**31.** Close zipper and check that it is invisible from the OUTSIDE.

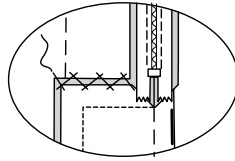
Pull the free ends of the zipper tape away from the seam allowance. Pin remaining center back seam together below zipper. Position zipper foot all the way to the LEFT so the needle goes down through the outer notch of the foot. Start stitching seam 1/4" (6mm) above lowest stitch and slightly to the LEFT. Stitch remainder of seam to the small dot, back-stitching at dot to reinforce the seam.



**32.** If the zipper is longer than the opening, using a strong thread, hand-sew a few small stitches across ends of coils at end of opening. Trim away lower end of zipper tape to within 5/8" (1.5cm) of hand-stitches.



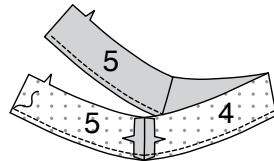
**33. CATCH STITCH** upper edge of extension to right back, invisibly.



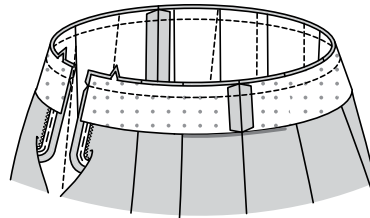
### FACING

**34.** Pin FRONT FACING (4) to BACK FACING (5) along side edges. Stitch.

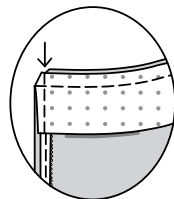
Finish inner edge of facing by stitching 1/4" (6mm) from raw edge and finishing with pinking, overcasting, overlock, or by turning in along stitching and stitching close to fold.



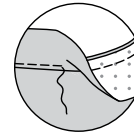
**35.** Open out center back opening edges of skirt, rolling the zipper teeth away from the opening edge. With RIGHT sides together, pin facing to skirt, matching centers, seams, and notches. Stitch upper edge. **TRIM SEAM.**



**36.** Pin back opening edges together. Using an adjustable zipper foot, stitch 1/2" (1.3cm) from back edges, keeping zipper teeth free. Trim corners. Do not trim center back edges.

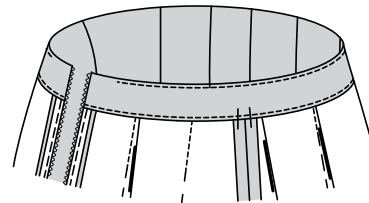


**37.** To **UNDERSTITCH** the facing, press facing and seam away from skirt and stitch through facing and seam allowances close to seam as far as possible.



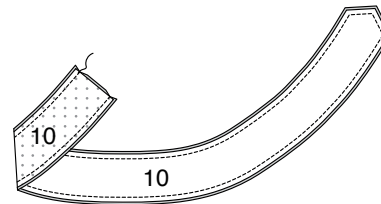
**38.** Turn facing and back edges to INSIDE, rolling zipper teeth back in place, press.

To keep the facing from rolling to OUTSIDE, secure it at the seam allowances by tacking it by hand.

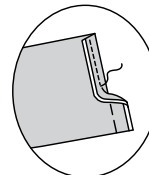


### BELT B, C

**39.** With RIGHT sides together and raw edges even, pin BELT (10) to belt facing. Stitch in a 3/8" (1cm) seam, leaving straight end open. **TRIM** seam.



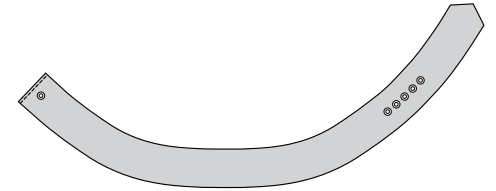
**40.** Turn belt; press. Baste 1/4" (6mm) from straight end. Turn under end along basting, press. **EDGESTITCH** close to pressed edge.



**41.** Make six grommet openings on belt at small dots, using an awl, or by cutting small holes with embroidery scissors.

Apply grommets following manufacturer's directions.

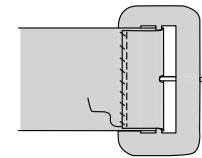
**TIP** – Practice applying grommets on a fabric remnant before applying to belt.



**42.** Cover buckle with fabric following manufacturer's directions.

Slip belt through buckle, and prong through single grommet on right end.

Turn finished end of belt to UNDERSIDE. **SLIPSTITCH** in place, securely.

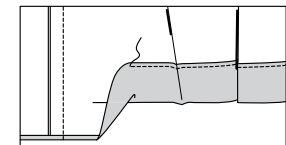


### FINISHING

**43.** Remove basting from pleats.

Open out pleats. Press up 2" (5cm) hem allowance. Turn under raw edge 1/4" (6mm); press. **EDGESTITCH** close to inner pressed edge.

Press pleats back in place, as shown on envelope.





# Congrats!

You've completed your sewing adventure

---

## SHARE YOUR LOOK



Post your pattern and tag us using [#simplicitypatterns](#)  
[@simplicity\\_creative\\_group](#)  
[@simplicitymccallsuk](#)  
[@simplicitymccallsaustralia](#)  
for a chance to be featured on our social media.

Look for more PDF patterns at [simplicity.com](#) or for customers outside the U.S. and Canada visit [sewdirect.com](#) and [sewdirect.com.au](#)

Have a question or need help with your sewing project contact us:  
[Simplicity.com](#)    [Sewdirect.com](#)    [Sewdirect.com.au](#)

**McCall's**  
by **design**<sub>group</sub>

McCall's ©2025 a division of IG Design Group Americas Inc. • Atlanta, GA 30342 USA [www.thedesigngroup.com](#) • All Rights Reserved. [www.mccall.com](#) • Made in the U.S.A. Fabriqué aux États-Unis.  
To be used for individual private home use only and not for commercial or manufacturing purposes. • A usage privé seulement et non à des fins commerciales ou de production en série. • Para uso privado solamente, no se puede utilizar con propósitos de comercialización o de producción en serie.