

For customers outside of the U.S. and Canada

sewdirect.com sewdirect.com.au

Shop all the pattern brands you love @
Simplicity®.com

McCall's

M8583

A



B



C



Designed and printed in USA



Scan QR code for a Sew-Along video tutorial.
Scannez le code QR pour un didacticiel vidéo de couture.



Average										
MISSES' SKIRT IN TWO LENGTHS										
Suggested Fabrics: Chambray, Linen Blends, Poplin, Taffeta. Interfacing: Lightweight Fusible.										
Notions: A, B, C: One 7" (18cm) invisible zipper.										
Sizes	6	8	10	12	14	16	18	20	22	24
European	32	34	36	38	40	42	44	46	48	50
BODY MEASUREMENTS: Select pattern size based on body measurements										
Bust	30½	31½	32½	34	36	38	40	42	44	46 Ins.
Waist	23	24	25	26½	28	30	32	34	37	39 "
Hip-9" below waist	32½	33½	34½	36	38	40	42	44	46	48 "
Back-neck to waist	15½	15¾	16	16¼	16½	16¾	17	17¼	17½	17¾ "
Interfacing A, B, C										
20"	¾	¾	¾	¾	1	1	1	1	1	1 Yds.
Skirt A	45**	2¾	2¾	2¾	2¾	2¾	2¾	2¾	3	3 Yds.
	60**	2	2	2	2	2	2	2	2	"
Skirt B	45**	5½	5½	5½	5¾	5¾	6	6¼	6½	6¾ Yds.
	60**	4¾	4¾	4¾	4¾	4¾	4¾	4¾	5	5¾ "
Skirt C	45**	6¾	6¾	6¾	6¾	6¾	6¾	6¾	6¾	7 Yds.
	60**	4¾	4¾	4¾	5	5½	5½	5½	5½	5½ "
FINISHED GARMENT MEASUREMENTS (Includes Design and Wearing Ease)										
A, B, C Waist	24	25	26	27½	29½	31½	33½	35½	37½	39½ Ins.
Finished back length from waist										
Skirt A	16½	16½	16½	16½	16½	16½	16½	16½	16½	16½ Ins.
Skirt B, C	34	34	34	34	34	34	34	34	34	"

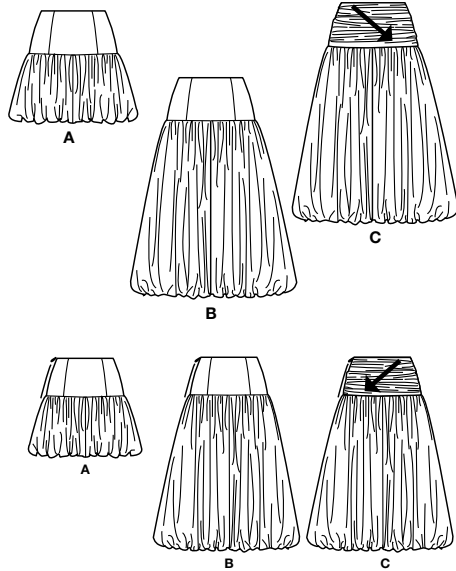
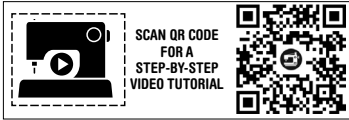
*with nap **without nap

Moins Facile

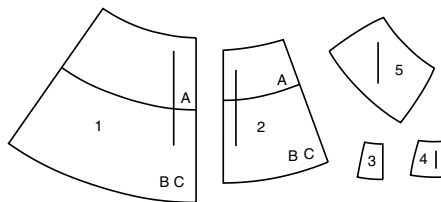
JUPE EN DEUX LONGUEURS POUR JEUNES FEMMES												
Tissus Conseillés: Chambray, Lin mélangés, Popeline, Taffetas. Entoilage: Thermocollant léger.												
Mercerie: A, B, C: 1 fermeture à glissière invisible de 18cm.												
Tailles	6	8	10	12	14	16	18	20	22	24		
Françaises	34	36	38	40	42	44	46	48	50	52		
Européen	32	34	36	38	40	42	44	46	48	50		
MESURES DU CORPS: Choisissez la taille du patron basée sur les mesures du corps												
Poitrine	78	80	83	87	92	97	102	107	112	117	cm	
Taille	58	61	64	67	71	76	81	87	94	99	"	
Hanches (23cm au-dessous de la taille)												
	83	85	88	92	97	102	107	112	117	122	cm	
Dos du cou à la taille	39.5	40	40.5	41.5	42	42.5	43	44	44.5	45	"	
Entoilage A, B, C												
51cm	0.8	0.8	0.8	0.8	0.8	0.8	0.8	0.8	0.9	0.9	m	
Jupe A	115cm*	2.5	2.5	2.5	2.5	2.6	2.6	2.6	2.6	2.7	2.7	m
	150cm*	1.8	1.8	1.8	1.8	1.8	1.8	1.8	1.8	1.8	1.8	"
Jupe B	115cm*	5.0	5.0	5.0	5.1	5.3	5.5	5.7	5.9	6.2	6.3	m
	150cm*	4.2	4.2	4.2	4.2	4.2	4.3	4.3	4.5	4.6	4.7	"
Jupe C	115cm*	5.6	5.6	5.7	5.7	5.9	6.1	6.2	6.3	6.4	6.4	m
	150cm*	4.5	4.5	4.5	4.6	4.6	4.7	4.8	4.9	4.9	5.0	"
MESURES DES VÊTEMENTS FINI (Motif et aisance de port compris)												
A, B, C Taille	61	64	66	70	75	80	85	90	95	100	cm	
Longueur finie – dos, taille à l'ourlet												
Jupe A	42	42	42	42	42	42	42	42	42	42	cm	
Jupe B, C	86	86	86	86	86	86	86	86	86	86	"	

*avec sens **sans sens



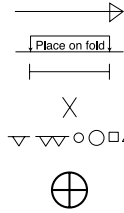


5 PATTERN PIECES



- 1 Skirt Front and Back-A,B,C
2 Skirt Stay-A,B,C
3 Yoke Front and Back-A,B,C
4 Yoke Side-A,B,C
5 Drape-C

PATTERN MARKINGS



GRAINLINE: Place on straight grain of fabric, parallel to selvage or fold.

FOLDLINE: Place line on fold of fabric.

BUTTONHOLE MARKING: Indicates exact length and placement of buttonholes.

BUTTON MARKING: Indicates button placement.

NOTCHES AND SYMBOLS: For matching seams and construction details.

Indicates the Bustline, Waistline, Hip and/or Biceps. Measurements refer to circumference of Finished Garment (Body Measurement + Wearing Ease + Design Ease). Adjust pattern if necessary. The measurement excludes pleats, tucks, darts and seam allowances.

SEAM ALLOWANCE: 5/8" (1.5cm) included unless otherwise indicated, but not printed on tissue.

ADJUST IF NECESSARY

Lengthen or Shorten at adjustment lines (==) or where indicated on pattern. If substantial length is added, you may need to purchase additional fabric.

TO SHORTEN: Crease along adjustment line. Make a fold half the amount needed. Tape in place.

TO LENGTHEN: Slash between adjustment lines. Spread amount as needed, keeping edges parallel. Tape over paper.

When Alteration lines are not on tissue, lengthen or shorten at lower edge.

CUTTING AND MARKING

SHRINK FABRIC if not labeled pre-shrunk. Press.

CIRCLE LAYOUT for View, Size, Fabric Width.

Use **WITH NAP** layout for fabrics with one-way designs, nap, pile or surface shading. Because most knits have surface shading, a with nap layout is used.

For **DOUBLE THICKNESS (WITH FOLD)** - fold fabric with right sides together.

*** DOUBLE THICKNESS (WITHOUT FOLD)** - For fabrics with nap, fold fabric crosswise, right sides together. Mark as shown. Cut along crosswise fold of fabric (A). Turn upper layer 180° so arrows go in same direction and place over lower layer, right sides together (B).

For **SINGLE THICKNESS** - place fabric right side up. (For Fur Pile fabrics, place pile side down.)

★ Cut other pieces first, allowing enough fabric to cut this piece. Open fabric. For "Cut 1" pieces, cut piece once on single layer of fabric with piece face up on right side of fabric.

Pattern may have cutting lines for several sizes. Select the proper cutting line or pattern pieces for your size.

Before **CUTTING** place all pieces on fabric according to layout. Pin. (Layouts show approximate position of pattern pieces; position may vary according to your pattern size.) Cut **ACCURATELY**, cutting notches outward.

Before removing pattern, **TRANSFER MARKINGS** and lines of construction to Wrong Side of fabric, using the Pin and Chalk Pencil method or Tracing Paper and Dressmaker Wheel. Markings needed on right side of fabric should be thread traced.

NOTE: Broken-line boxes (a! b! c!) in layouts represent pieces cut by measurements provided.

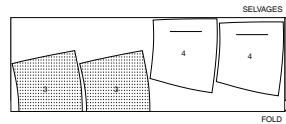
CUTTING LAYOUTS

RIGHT SIDE OF PATTERN	WRONG SIDE OF PATTERN	RIGHT SIDE OF FABRIC	WRONG SIDE OF FABRIC

INTERFACING A, B, C

USE PIECES: 3 4

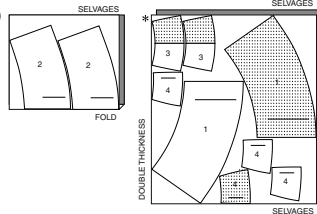
20" (51 CM)
WITHOUT NAP
ALL SIZES



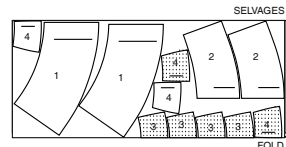
SKIRT A

USE PIECES: 1 2 3 4

45" (115CM)
WITH NAP
ALL SIZES



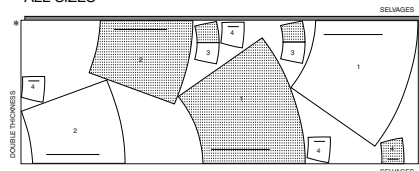
60" (150CM)
WITH NAP
ALL SIZES



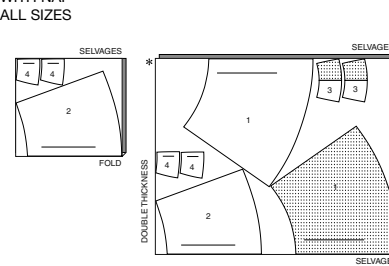
SKIRT B

USE PIECES: 1 2 3 4

45" (115CM)
WITH NAP
ALL SIZES



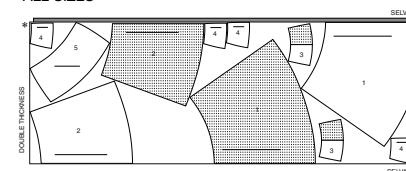
60" (150CM)
WITH NAP
ALL SIZES



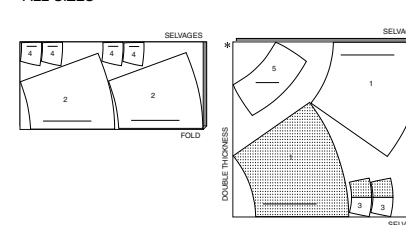
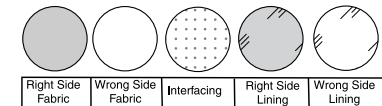
SKIRT C

USE PIECES: 1 2 3 4 5

45" (115CM)
WITH NAP
ALL SIZES

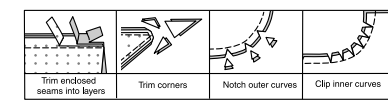


60" (150CM)
WITH NAP
ALL SIZES

SEWING INFORMATION
FABRIC KEY

SEAM ALLOWANCES

Use 5/8" (1.5cm) seam allowances unless otherwise indicated.



PIN AND FIT

Pin or baste seams, **RIGHT SIDE TOGETHER**, matching notches. Fit garment before stitching major seams.

PRESS

Press seam allowances flat; then open unless otherwise stated. Clip where necessary so they lie flat.

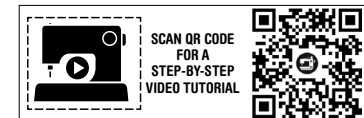
GLOSSARY

Sewing terms appearing in **BOLD TYPE** in Sewing Instructions are explained below.

GATHER - Stitch along seamline and again 1/4" (6mm) away in seam allowance, using long machine stitches. Pull thread ends when adjusting to fit.

SLIPSTITCH - Slide needle through a folded edge, then pick up a thread of underneath fabric.

UNDERSTITCH - Open out facing or underside of garment; stitch to seam allowance close to seam.



PATTERN PIECES WILL BE IDENTIFIED BY NUMBERS THE FIRST TIME THEY ARE USED.

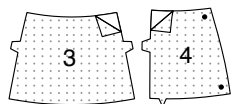
STITCH SEAMS WITH RIGHT SIDES TOGETHER UNLESS OTHERWISE STATED.

SKIRT A, B, C

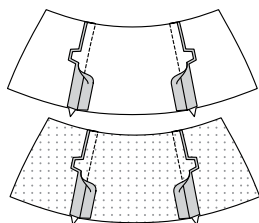
NOTE: The first view mentioned will be shown, unless otherwise indicated.

YOKE

1. Fuse **INTERFACING** to wrong side of two **YOKE FRONT AND BACK** (3) **FABRIC** sections and four **YOKE SIDE** (4) **FABRIC** sections, following manufacturer's instructions.

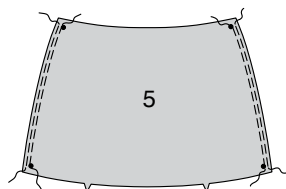


2. For each front and back, stitch two yoke side sections without interfacing to side edges of one yoke front and back section without interfacing. For each front and back **FACING**, stitch remaining yoke sections with interfacing together in same manner.

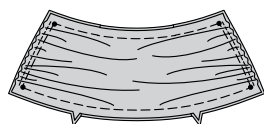


View C

3. **GATHER** side edges of **DRAPE** (5) between small dots.

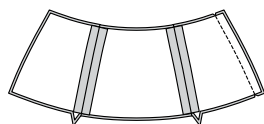


4. With **RIGHT** sides up, pin each drape to front and back yokes, matching notches and small dots, having raw edges even. Adjust gathers; baste.



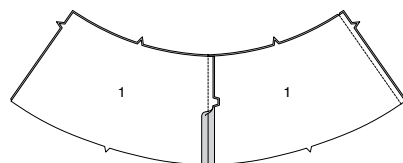
Views A, B, C

5. Pin front and back yoke sections together at right side. Stitch, leaving left side open.

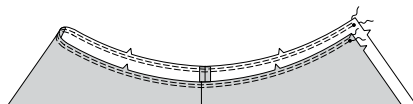


SKIRT

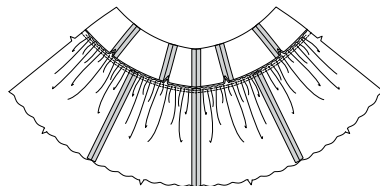
6. For each front and back, stitch two **SKIRT FRONT AND BACK** (1) sections together at center front and center back seam. Stitch front and back sections together at right side, leaving left side open.



7. **GATHER** upper edge of skirt between small dots on left side.



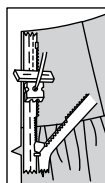
8. Pin skirt to yoke matching centers, notches, and right side seam. Adjust gathers. Stitch. Turn seam toward yoke. Press.



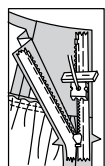
INVISIBLE ZIPPER

NOTE: Stitch the invisible zipper using an invisible zipper foot. If the zipper is longer than the zipper opening, adjust after the zipper is inserted.

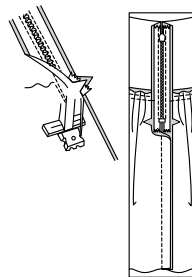
9. Open the zipper and press the tape using a cool iron. On **OUTSIDE**, pin **RIGHT** side of the zipper face down on the **RIGHT** side of the zipper opening. Have the coil along the seam line, the tape within the seam allowance and the top stop 3/4" (2cm) below upper edge, as shown. Hand-baste along center of the tape. Position zipper foot at the top of the zipper with **RIGHT** groove of the foot over coil. Stitch along tape to the notch. Back-stitch to reinforce.



10. Pin the remaining half of the zipper to the **LEFT** side of the zipper opening in same manner. Make sure the upper and lower edges of the garment are even. Hand-baste along the center of the tape. Position zipper foot at the top of the zipper with **LEFT** groove over the coil. Stitch along tape to the notch. Back-stitch to reinforce.



11. Close zipper and check that it is invisible from the **OUTSIDE**. Pull the free ends of the zipper tape away from the seam allowance. Pin remaining left side seam together below zipper. Position zipper foot all the way to the **LEFT** so the needle goes down through the outer notch of the foot. Start stitching seam 1/4" (6mm) above lowest stitch and slightly to the **LEFT**. Stitch seam for about 3" (7.5cm). Stitch remainder of seam using your regular presser foot.



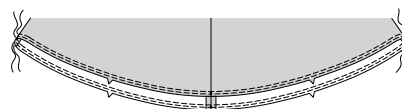
12. If the zipper is longer than the opening, using a strong thread, hand-sew a few small stitches across ends of coils at end of opening. Trim away lower end of zipper tape to within 5/8" (1.5cm) of hand-stitches.



13. If you prefer, open out each seam allowance at end of zipper and stitch tape to seam allowance.

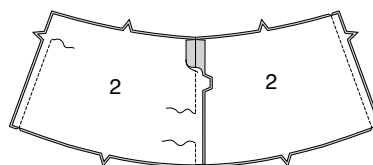


14. **GATHER** lower edge of skirt, breaking stitching at side seams.

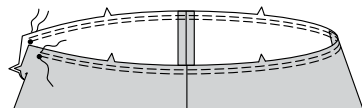


SKIRT STAY

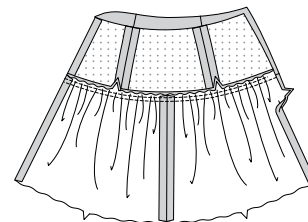
15. For each front stay and back stay, stitch two **SKIRT STAY** (2) sections together at center front and center back seam, leaving an opening in center back seam close to lower edge. Stitch front and back sections together at right side. Stitch left side, stopping stitching at notch.



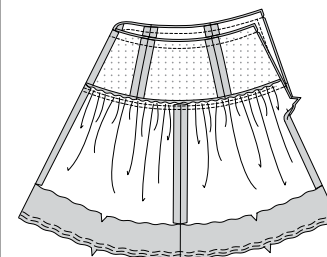
16. **GATHER** upper edge of stay between small dots on left side.



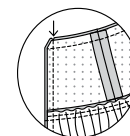
17. With **RIGHT** sides together, pin stay to yoke facing matching centers, notches and right side seams. Adjust gathers. Stitch. Turn seam toward yoke facing. Press.



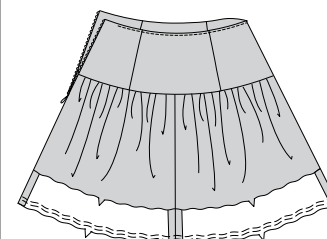
18. Open out left side opening edges of skirt, rolling zipper teeth away from the opening edge. With **RIGHT** sides together, pin yoke facing/stay to skirt, matching centers, side seams and opening edges. Stitch upper edge. Trim.



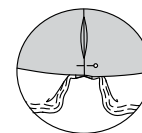
19. Pin left side opening edges together. Using an adjustable zipper foot, stitch 1/2" (1.3cm) from left side edges, keeping zipper teeth free. Trim corners. Do not trim side edges.



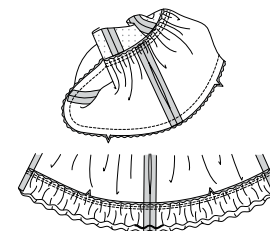
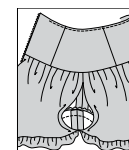
20. **UNDERSTITCH** yoke facing as far as possible. Turn facing and stay to **INSIDE**, rolling zipper teeth back in place. Press.



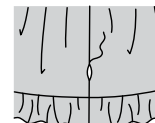
21. With **WRONG** sides together, pin lower edge of stay to lower edge of skirt at center back seam, placing the pin horizontally along the seamline. This is to keep the seams aligned when turned **WRONG** sides out.



22. Reach in through opening in center back seam and pull out lower edge of stay and skirt and re-pin **RIGHT** sides together. Continue pulling out lower edges and pinning **RIGHT** sides together, matching seams and centers. Adjust gathers. Baste. Stitch, pulling seam through the "donut hole" as you stitch.



23. Turn skirt **RIGHT** side out through opening. **SLIPSTITCH** opening closed.





Congrats!

You've completed your sewing adventure

SHARE YOUR LOOK



Post your pattern and tag us using [#simplicitypatterns](#)
[@simplicity_creative_group](#)
[@simplicitymccallsuk](#)
[@simplicitymccallsaustralia](#)
for a chance to be featured on our social media.

Look for more PDF patterns at [simplicity.com](#) or for customers outside the U.S. and Canada visit [sewdirect.com](#) and [sewdirect.com.au](#)

Have a question or need help with your sewing project contact us:
[Simplicity.com](#) [Sewdirect.com](#) [Sewdirect.com.au](#)

McCall's
by **design**_{group}

McCall's ©2025 a division of IG Design Group Americas Inc. • Atlanta, GA 30342 USA [www.thedesigngroup.com](#) • All Rights Reserved. [www.mccall.com](#) • Made in the U.S.A. Fabriqué aux États-Unis.
To be used for individual private home use only and not for commercial or manufacturing purposes. • A usage privé seulement et non à des fins commerciales ou de production en série. • Para uso privado solamente, no se puede utilizar con propósitos de comercialización o de producción en serie.