

McCall's

M8581



This sewing pattern includes multiple view options with simple instructions. Show your make!
Ce patron de couture comprend plusieurs modèles avec des instructions faciles! Montrez votre réalisation!

Average

MISSES' AND WOMEN'S DRESS IN TWO LENGTHS

Suggested Fabrics: Faille, Mikado, Sateen, Taffeta. Lining: Lining Fabric. Interfacing: Medium weight fusible.

Notions: A, B, C: One 14" (36cm) invisible zipper.

MISSES' SIZES	10	12	14	16	18		
EUROPEAN	36	38	40	42	44		
BODY MEASUREMENTS: Select pattern size based on body measurements							
Bust	32½	34	36	38	40	Ins.	
Waist	25	26½	28	30	32	"	
Hip	34½	36	38	40	42	"	
Back-neck to waist	16	16¼	16½	16¾	17	"	
Lining A, B, C	45***	¾	¾	¾	¾	Yds.	
Interfacing	20"	¾ yd.					
Dress A	45**	¾	1	1	1	Yds.	
60**	¾	¾	¾	¾	¾	"	
Contrast	45**	1¾	1¾	1¾	1¾	Yds.	
60**	1¾	1¾	1¾	1¾	1¾	"	
Dress B	45**	2¼	2¾	2¾	2¾	Yds.	
60**	1¾	1¾	1¾	1¾	1¾	"	
Dress C	45**	4½	4½	4½	4½	Yds.	
60**	2¾	2¾	2¾	2¾	2¾	"	

WOMEN'S SIZES	20W	22W	24W	26W	28W	30W	32W	34W	36W	38W	
EUROPEAN	46	48	50	52	54	56	58	60	62	64	
BODY MEASUREMENTS: Select pattern size based on body measurements											
Bust	42	44	46	48	50	52	54	56	58	60	Ins.
Waist	35	37	39	41½	44	46½	49	51½	53	54½	"
Hip	44	46	48	50	52	54	56	58	60	62	"
Back-neck to waist	17¼	17¾	17½	17¾	17¾	17¾	18	18¾	18¾	18¾	"
Lining A, B, C	45***	¾	¾	½	½	¾	¾	¾	¾	¾	Yds.
Interfacing	20"	1½ yds.									
Dress A	45**	1	1	1	1	1	1	1½	1½	1½	Yds.
60**	¾	¾	¾	¾	¾	¾	¾	¾	¾	¾	"
Contrast	45**	2	2	2	2	2	2	2	2½	2½	Yds.
60**	1½	1½	1½	1½	1½	1½	1½	1½	1½	1½	"
Dress B	45**	2¼	2¼	2¼	2¼	2¼	2¼	2¼	2½	2½	Yds.
60**	2¼	2¼	2¼	2¼	2¼	2¼	2¼	2¼	2¼	2½	"
Dress C	45**	4½	4½	4½	4½	4½	4¾	4¾	5	5½	Yds.
60**	4	4	4	4	4¼	4¼	4¼	4¾	4¾	4½	"

NOTE: Please refer to the English guide for FINISHED GARMENT MEASUREMENTS.

*with nap **without nap

Moins Facile

ROBE EN DEUX LONGUEURS POUR JEUNES FEMMES ET FEMMES

Tissus Conseillés: Faille, Mikado, Satinette, Taffetas. Doublure: Tissu à doublure. Entoilage: Thermocollant de poids moyen.

Mercerie: A, B, C: 1 fermeture à glissière invisible de 36cm.

TAILLES (J. FEMMES)	10	12	14	16	18	
FRANÇAISES	38	40	42	44	46	
EUROPÉEN	36	38	40	42	44	
MESURES DU CORPS: Choisissez la taille du patron basée sur les mesures du corps						
Poitrine	83	87	92	97	102	cm
Taille	64	67	71	76	81	"
Hanches	88	92	97	102	107	"
Dos du cou à la taille	40.5	41.5	42	42.5	43	"
Doublure A, B, C	115cm**	0.3	0.3	0.3	0.3	m
Entoilage	51cm	-0.7m				
Robe A	115cm*	0.8	0.8	0.9	0.9	m
150cm*	0.6	0.6	0.6	0.6	0.7	"
Contraste	115cm*	1.6	1.6	1.6	1.6	m
150cm*	1.1	1.1	1.1	1.1	1.1	"
Robe B	115cm*	2.2	2.2	2.2	2.2	m
150cm*	1.5	1.5	1.5	1.5	1.5	"
Robe C	115cm*	4.1	4.1	4.1	4.1	m
150cm*	2.4	2.4	2.4	2.4	2.4	"

TAILLES (FEMMES)	20W	22W	24W	26W	28W	30W	32W	34W	36W	38W	
FRANÇAISES	48	50	52	54	56	58	60	62	64	66	
EUROPÉEN	46	48	50	52	54	56	58	60	62	64	
MESURES DU CORPS: Choisissez la taille du patron basée sur les mesures du corps											
Poitrine	107	112	117	122	127	132	137	142	147	152	cm
Taille	89	94	99	105	112	118	124	131	134	138	"
Hanches	112	117	122	127	132	137	142	147	152	157	"
Dos du cou à la taille	44	44	44.5	45	45	45.5	46	46	46.5	47	"
Doublure A, B, C	115cm**	0.3	0.3	0.5	0.5	0.5	0.5	0.6	0.6	0.6	m
Entoilage	51cm	-0.9m									
Robe A	115cm*	0.9	0.9	0.9	0.9	0.9	0.9	0.9	1.0	1.0	m
150cm*	0.7	0.7	0.7	0.7	0.7	0.7	0.7	0.7	0.7	0.8	"
Contraste	115cm*	1.7	1.7	1.7	1.7	1.7	1.7	1.7	2.1	2.2	m
150cm*	1.7	1.7	1.7	1.7	1.7	1.7	1.7	1.7	1.7	1.7	"
Robe B	115cm*	2.5	2.5	2.6	2.5	2.6	2.6	2.6	2.6	2.6	m
150cm*	2.1	2.1	2.1	2.1	2.1	2.1	2.1	2.1	2.1	2.2	"
Robe C	115cm*	4.1	4.1	4.1	4.1	4.1	4.3	4.5	4.6	4.7	m
150cm*	3.7	3.7	3.7	3.7	3.9	3.9	3.9	3.9	4.0	4.1	"

NOTE: S'il vous plaît, reportez-vous au guide en français pour les MESURES DU VÊTEMENT FINI.

*avec sens **sans sens



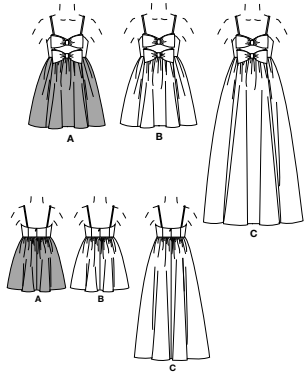
A



B



C



PATTERN MARKINGS

GRAINLINE: Place on straight grain of fabric, parallel to selvage or fold.

FOLDLINE: Place line on fold of fabric.

BUTTONHOLE MARKING: Indicates exact length and placement of buttonholes.

BUTTON MARKING: Indicates button placement.

NOTCHES AND SYMBOLS: For matching seams and construction details.

Indicates the Bustline, Waistline, Hip and/or Biceps. Measurements refer to circumference of Finished Garment (Body Measurement + Wearing Ease + Design Ease). Adjust pattern if necessary. The measurement excludes pleats, tucks, darts and seam allowances.

SEAM ALLOWANCE: 5/8" (1.5cm) included unless otherwise indicated, but not printed on tissue.

ADJUST IF NECESSARY

Lengthen or Shorten at adjustment lines (==) or where indicated on pattern. If substantial length is added, you may need to purchase additional fabric.

TO SHORTEN: Crease along adjustment line. Make a fold half the amount needed. Tape in place.

TO LENGTHEN: Slash between adjustment lines. Spread amount as needed, keeping edges parallel. Tape over paper.

When Alteration lines are not on tissue, lengthen or shorten at lower edge.

CUTTING AND MARKING

SHRINK FABRIC if not labeled pre-shrunk. Press.

CIRCLE LAYOUT for View, Size, Fabric Width.

Use **WITH NAP** layout for fabrics with one-way designs, nap, pile or surface shading. Because most knits have surface shading, a with nap layout is used.

For **DOUBLE THICKNESS (WITH FOLD)** - fold fabric with right sides together.

*** DOUBLE THICKNESS (WITHOUT FOLD)** - For fabrics with nap, fold fabric crosswise, right sides together. Mark as shown. Cut along crosswise fold of fabric (A). Turn upper layer 180° so arrows go in same direction and place over lower layer, right sides together (B).

For **SINGLE THICKNESS** - place fabric right side up. (For Fur Pile fabrics, place pile side down.)

★ Cut other pieces first, allowing enough fabric to cut this piece. Open fabric. For "Cut 1" pieces, cut piece once on single layer of fabric with piece face up on right side of fabric.

Pattern may have cutting lines for several sizes. Before **CUTTING** place all pieces on fabric according to layout. **Pin. (Layouts show approximate position of pattern pieces; position may vary according to your pattern size.)** Cut **ACCURATELY**, cutting notches outward.

Before removing pattern, **TRANSFER MARKINGS** and lines of construction to Wrong Side of fabric, using the Pin and Chalk Pencil method or Tracing Paper and Dressmaker Wheel. Markings needed on right side of fabric should be thread traced.

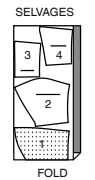
NOTE: Broken-line boxes (a| b| c|) in layouts represent pieces cut by measurements provided.

CUTTING LAYOUTS

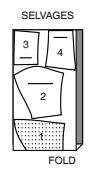
RIGHT SIDE OF PATTERN	WRONG SIDE OF PATTERN	RIGHT SIDE OF FABRIC	WRONG SIDE OF FABRIC
-----------------------	-----------------------	----------------------	----------------------

LINING A,B,C
USE PIECES 1 2 3 4

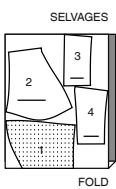
45" (115cm)
WITH NAP
SIZES 10 12 14 16 18



45" (115cm)
WITH NAP
SIZES 20W 22W 24W

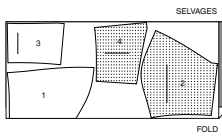


45" (115cm)
WITH NAP
SIZES 26W 28W 30W 32W 34W 36W 38W

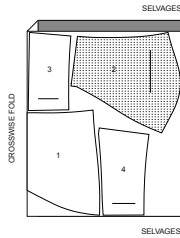


INTERFACING A,B,C
USE PIECES 1 2 3 4

20" (51CM)
SIZES 10 12 14 16 18



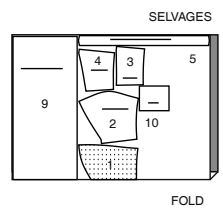
20" (51CM)
SIZES 20W 22W 24W 26W
28W 30W 32W 34W 36W 38W



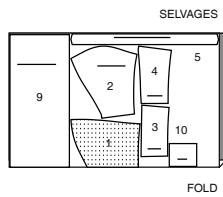
DRESS A

USE PIECES 1 2 3 4 5 9 10

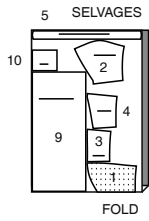
45" (115cm)
WITH NAP
SIZES 10 12 14 16 18



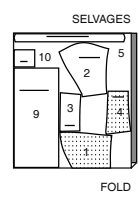
45" (115cm)
WITH NAP
SIZES 20W 22W 24W 26W
28W 30W 32W 34W 36W 38W



60" (150CM)
WITH NAP
SIZES 10 12 14 16 18

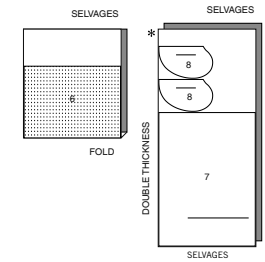


60" (150CM)
WITH NAP
SIZES 20W 22W 24W 26W
28W 30W 32W 34W 36W 38W

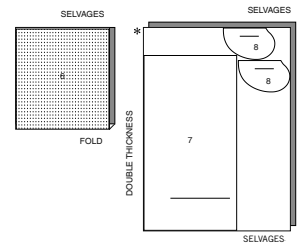


CONTRAST
USE PIECES 6 7 8

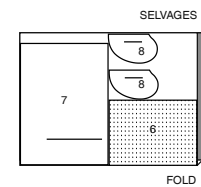
45" (115CM)
WITH NAP
SIZES 10 12 14 16 18



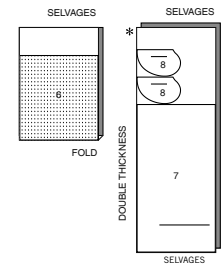
45" (115CM)
WITH NAP
SIZES 20W 22W 24W 26W
28W 30W 32W 34W
36W 38W



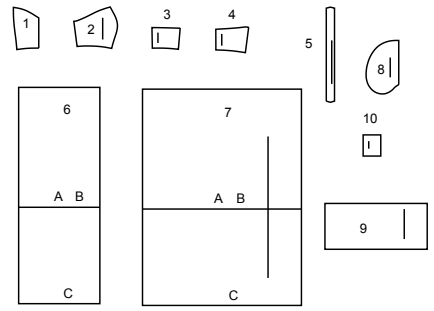
60" (150CM)
WITH NAP
SIZES 10 12 14 16 18



60" (150CM)
WITH NAP
SIZES 20W 22W 24W 26W
28W 30W 32W 34W 36W 38W



10 PATTERN PIECES



- 1 BODICE FRONT - A,B,C
- 2 BODICE SIDE FRONT - A,B,C
- 3 BODICE BACK - A,B,C
- 4 BODICE SIDE BACK - A,B,C
- 5 SHOULDER STRAP - A,B,C
- 6 SKIRT FRONT - A,B,C
- 7 SKIRT BACK - A,B,C
- 8 POCKET - A,B,C
- 9 BOW - A,B,C
- 10 KNOT - A,B,C

MISSES' SIZES	10	12	14	16	18
EUROPEAN	36	38	40	42	44

FINISHED GARMENT MEASUREMENTS (Includes Design and Wearing Ease)						
A,B,C Bust	33	34 1/2	36 1/2	38 1/2	40 1/2	cm
Width, lower edge	71%	73%	75%	77%	79%	cm
Finished back length from base of neck						
Dress A,B	31	31 1/2	31 3/4	32	32	cm
Dress C	56 1/2	56 1/2	57	57 1/2	57 1/2	"

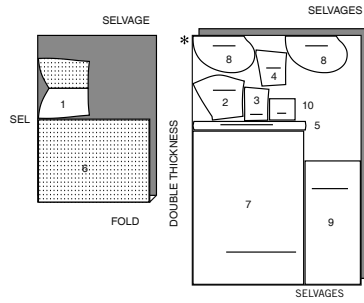
WOMEN'S SIZES	20W	22W	24W	26W	28W	30W	32W	34W	36W	38W
EUROPEAN	46	48	50	52	54	56	58	60	62	64

FINISHED GARMENT MEASUREMENTS (Includes Design and Wearing Ease)											
A,B,C Bust	43 1/2	45 1/2	47 1/2	50	52 1/2	55	57 1/2	60	62 1/2	65	Ins.
Width, lower edge	96%	98%	100%	102%	105%	107%	110%	112%	115%	117 1/2%	Ins.
Finished back length from base of neck											
Dress A,B	33	33 1/2	33 3/4	34	34 1/2	34 3/4	34 3/4	35	35 1/2	35	Ins.
Dress C	62 1/2	62 1/2	62 3/4	63	63 1/2	63 3/4	63 3/4	64	64 1/2	64 1/2	"

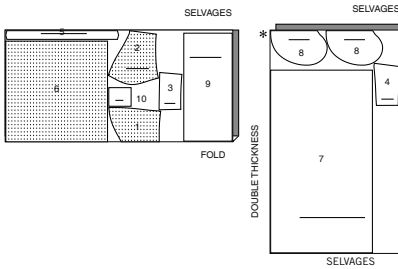
DRESS B

USE PIECES 1 2 3 4 5 6 7 8 9 10

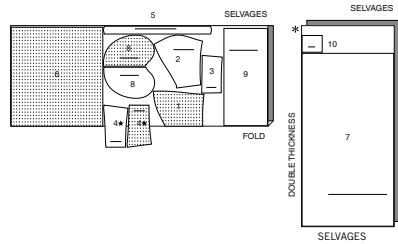
45" (115cm)
WITH NAP
SIZES 10 12 14 16 18



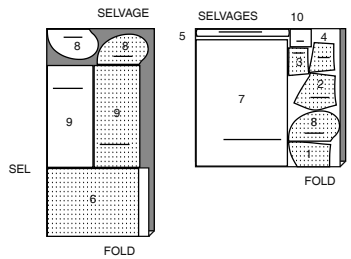
45" (115CM)
WITH NAP
SIZES 20W 22W 24W
26W 28W 30W 32W



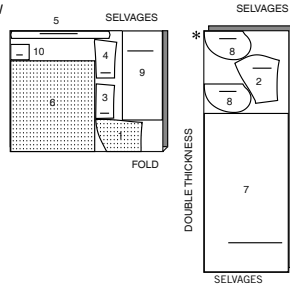
45" (115CM)
WITH NAP
SIZES 34W 36W 38W



60" (150CM)
WITH NAP
SIZES 10 12 14 16 18



60" (150CM)
WITH NAP
SIZES 20W 22W 24W 26W
28W 30W 32W 34W 36W 38W



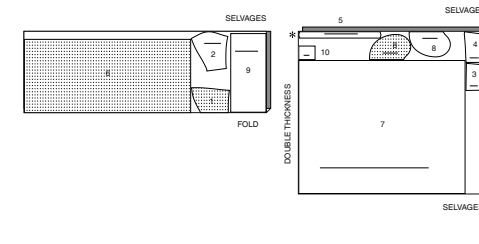
DRESS C

USE PIECES 1 2 3 4 5 6 7 8 9 10

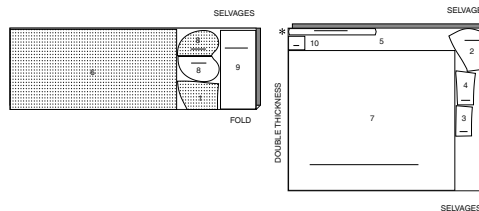
45" (115CM)
WITH NAP
SIZES 10 12 14 16 18



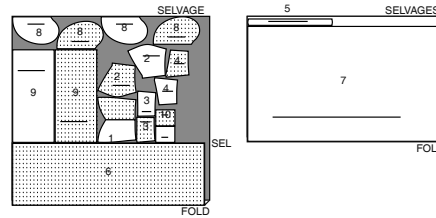
45" (115CM)
WITH NAP
SIZES 20W 22W 24W 26W 28W 30W 32W



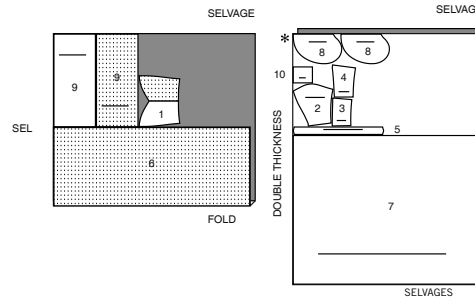
45" (115CM)
WITH NAP
SIZES 34W 36W 38W



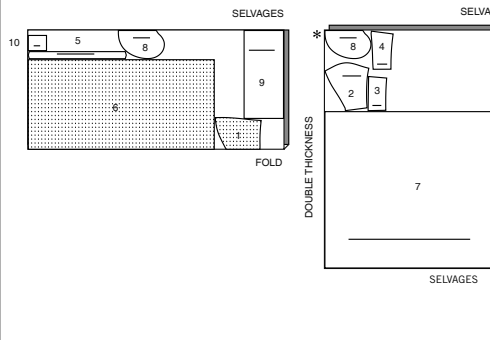
60" (150CM)
WITH NAP
SIZES 10 12 14 16 18



60" (150CM)
WITH NAP
SIZES 20W 22W 24W 26W

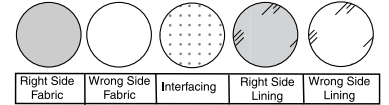


60" (150CM)
WITH NAP
SIZES 28W 30W 32W 34W 36W 38W



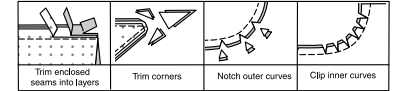
SEWING INFORMATION

FABRIC KEY



SEAM ALLOWANCES

Use 5/8" (1.5cm) seam allowances unless otherwise indicated.



PIN AND FIT

Pin or baste seams, **RIGHT SIDE TOGETHER**, matching notches. Fit garment before stitching major seams.

PRESS

Press seam allowances flat; then open unless otherwise stated. Clip where necessary so they lie flat.

GLOSSARY

Sewing methods in **BOLD TYPE** have Sewing Tutorial Video available. Scan **QR CODE** to watch videos.

DESIGNER NARROW HEM – See Hems: "sewing a baby hem" video.

EASE – See Gathering: "sewing two row gathers" video.

INVISIBLE ZIPPER – See Zippers: "sewing an invisible zipper" video.

SLIPSTITCH – See Hand Stitching: "how to slip stitch" video.

STAYSTITCH – See Machine Stitches: "how to do stay stitching" video.

STITCH IN THE DITCH – See Machine Stitches: "how to stitch in the ditch" video.

TRIM SEAM – See Seams: "how to trim, clip and layer seams" video.

UNDERSTITCH – See Machine Stitches: "how to understitch" video.

SEWING TUTORIALS



Build your skills viewing short, easy-to-follow videos at simplicity.com/sewingtutorials

PATTERN PIECES WILL BE IDENTIFIED BY NUMBERS THE FIRST TIME THEY ARE USED.

STITCH 5/8" (1.5CM) SEAMS WITH RIGHT SIDES TOGETHER UNLESS OTHERWISE STATED.

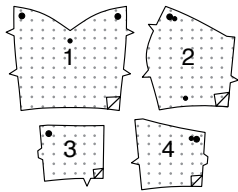
DRESS A, B, C

NOTE: VIEW A will be illustrated unless otherwise noted.

INTERFACING

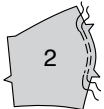
1. Pin interfacing to **BODICE FRONT (1)**, **BODICE SIDE FRONT (2)**, **BODICE BACK (3)**, and **BODICE SIDE BACK (4)** sections.

Fuse in place following manufacturer's directions.

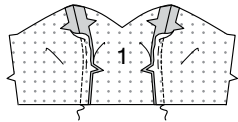


BODICE

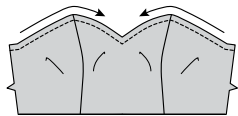
2. To **EASE** side front edge of **BODICE SIDE FRONT (2)** between the notches, loosen needle tension slightly. On **OUTSIDE**, stitch 5/8" (1.5cm) from cut edge using a long stitch. Stitch again 1/4" (6mm) from the first stitching within the seam allowance.



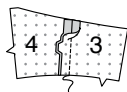
3. With **RIGHT** sides together and raw edges even, pin **BODICE FRONT (1)** to bodice side front along side front edges, matching notches, pulling up ease stitches to fit. Stitch. Press seam open.



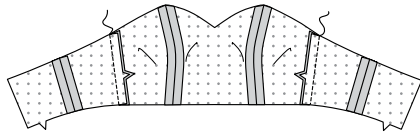
4. To **STAYSTITCH** neck edge of bodice, stitch 1/2" (1.3cm) from cut edge in direction of arrows. This stitching stays in permanently to prevent stretching on curved edges. (Shown only in the first illustration.)



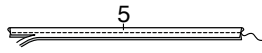
5. With **RIGHT** sides together and raw edges even, pin **BODICE BACK (3)** to **BODICE SIDE BACK (4)** along side back edges, matching notches. Stitch. Press seam open.



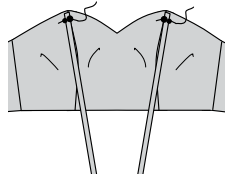
6. Stitch bodice front to bodice back at side edges.



7. Fold **SHOULDER STRAP (5)** in half, lengthwise, with **RIGHT** sides together. Stitch long edge in a 3/8" (1cm) seam. **TRIM SEAM.**

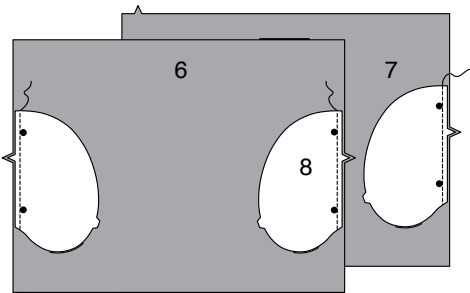


8. Turn strap; press. On **OUTSIDE**, pin ends of strap to bodice side front, matching small and large dots, having raw edges even. Baste.

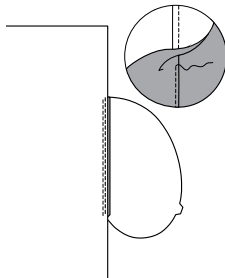


SKIRT AND POCKETS

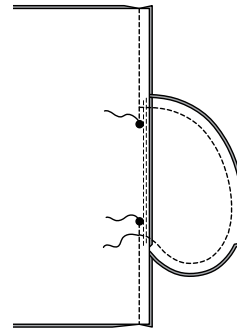
9. With **RIGHT** sides together, pin **POCKET (8)** to **SKIRT FRONT (6)** and **SKIRT BACK (7)** sections, matching large dots, having raw edges even. Stitch in 3/8" (1cm) seam.



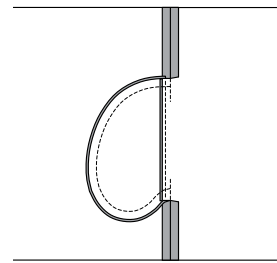
10. **UNDERSTITCH** the front pockets. Press seams toward pockets, pressing pockets out.



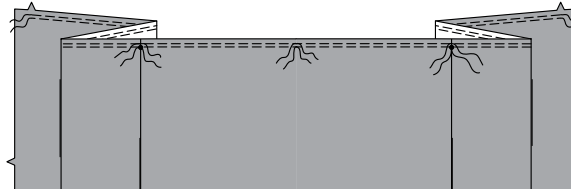
11. Pin skirt front to skirt back at side edges, matching large dots. Stitch side seams leaving open between large dots. Stitch pocket edge together to side seam.



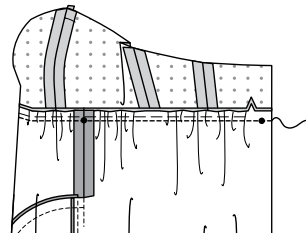
12. Clip skirt back seam allowance at ends of pocket, as shown. Press seam open above and below clips. Press pocket toward front.



13. To **GATHER** upper edge of skirt between the notches, loosen needle tension slightly. On **OUTSIDE**, stitch 5/8" (1.5cm) from cut edge using a long stitch, breaking stitching at centers and small dots. Stitch again 1/4" (6mm) from the first stitching within the seam allowance.



14. With **RIGHT** sides together and raw edges even, pin bodice to skirt, matching centers, small dots, and notches, pulling up gathering stitches to fit. Baste. Stitch. Press seam toward bodice.

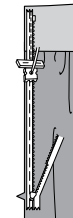


ZIPPER

NOTE: The zipper may be longer than the opening and will be trimmed after it is inserted.

NOTE: Stitch the invisible zipper using an invisible zipper foot. Before you begin, be sure to line up your needle with the center of the invisible zipper foot or you may break your needle. When the coils are to the **LEFT** of the raw edge use the **LEFT** groove and when the coils are to the **RIGHT** of the raw edge use the **RIGHT** groove.

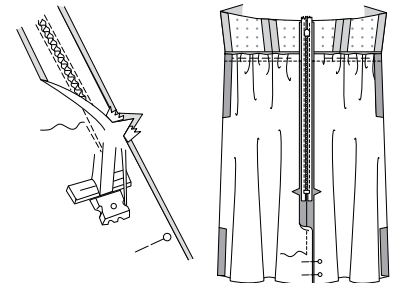
15. To insert an **INVISIBLE ZIPPER**, open the zipper and press the tape flat on the **WRONG** side unrolling the coils. Do not press the coils. (Use a low iron setting.) On **OUTSIDE**, pin **RIGHT** side of the zipper face down on the **RIGHT** side of the zipper opening. Have the coil along the seam line, the tape within the seam allowance and the top stop a scant 3/4" (2cm) below upper edge, as shown. Hand-baste along center of the tape. Position zipper foot at the top of the zipper with **RIGHT** groove of the foot over coil. Stitch along tape to the notch. Back-stitch to reinforce.



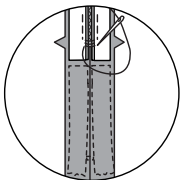
16. Pin the remaining half of the zipper to the **LEFT** side of the zipper opening in same manner. Make sure the upper and lower edges of the garment are even. Hand-baste along the center of the tape. Position zipper foot at the top of the zipper with **LEFT** groove over the coil. Stitch along tape to the notch. Back-stitch to reinforce.



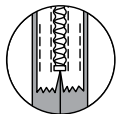
17. Close zipper and check that it is invisible from the **OUTSIDE**. Pull the free ends of the zipper tape away from the seam allowance. Pin remaining center back seam together below zipper. Position zipper foot all the way to the **LEFT** so the needle goes down through the outer notch of the foot. Start stitching seam 1/4" (6mm) above lowest stitch and slightly to the **LEFT**. Stitch seam for about 3" (7.5cm). Stitch remainder of seam using your regular presser foot.



18. If the zipper is longer than the opening, using a strong thread, hand-sew a few small stitches across ends of coils at end of opening. Trim away lower end of zipper tape to within 5/8" (1.5cm) of hand-stitches.

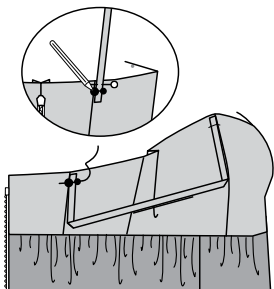


19. If you prefer, open out each seam allowance at end of zipper and stitch tape to seam allowance.



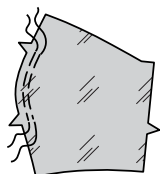
20. Turn dress and try it on. Pin shoulder strap to back edge between the large and small dots. Adjust, as necessary. Make marking on end of strap along back seamline.

On OUTSIDE, pin back end of strap to back with raw edges even, matching marking to back seamline between large and small dots. Baste. Trim strap, if needed.

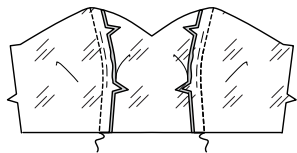


LINING

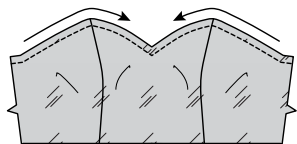
21. To EASE side front edge of bodice side front lining between the notches, loosen needle tension slightly. On OUTSIDE, stitch 5/8" (1.5cm) from cut edge using a long stitch. Stitch again 1/4" (6mm) from the first stitching within the seam allowance.



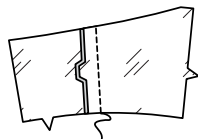
22. With RIGHT sides together and raw edges even, pin bodice front lining to bodice side front lining along side front edges, matching notches, pulling up ease stitches to fit. Stitch. Press seam toward front.



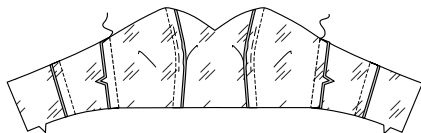
23. To STAYSTITCH neck edge of bodice, stitch 1/2" (1.3cm) from cut edge in direction of arrows. This stitching stays in permanently to prevent stretching on curved edges. (Shown only in the first illustration.)



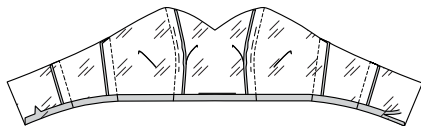
24. With RIGHT sides together and raw edges even, pin BODICE BACK (3) to BODICE SIDE BACK (4) along side back edges, matching notches. Stitch. Press seam toward back.



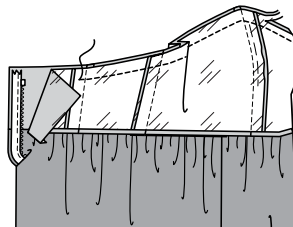
25. Stitch bodice front to bodice back at side edges. Press seam toward back.



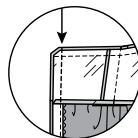
26. Press under 1/2" (1.3cm) on lower edge of lining. Trim to 1/4" (6mm).



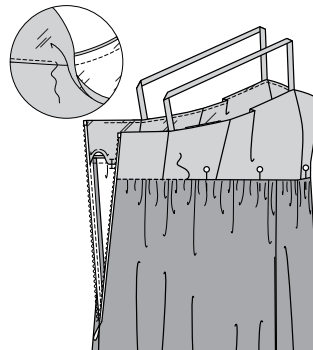
27. Open out center back opening edges of dress, rolling the zipper teeth away from the opening edge. With RIGHT sides together, pin lining to dress along upper edge, matching centers and side seams. Stitch upper edge, pivoting with needle in fabric at center front small dot. To reinforce center front at small dot, stitch again along stitching lines, pivoting with needle in fabric in the same manner. TRIM SEAM.



28. Pin back opening edges together. Using an adjustable zipper foot, stitch 1/2" (1.3cm) from back edges, keeping zipper teeth free. Trim corners. Do not trim center back edges.

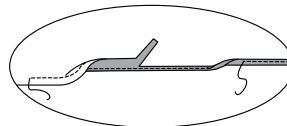


29. UNDERSTITCH the lining as far as possible. Turn lining and back edges to INSIDE, rolling zipper teeth back in place; press. On INSIDE, pin pressed edge of lining over seam, placing pins on OUTSIDE. On OUTSIDE, STITCH IN THE DITCH of the seam, catching in pressed edge of lining on the INSIDE.



FINISHING

30. To make a DESIGNER NARROW HEM, press under 1/4" (6mm) on lower edge of dress. Stitch close to pressed edge. Trim close to stitching. Press under another 1/8" (3mm) and stitch in place close to inner pressed edge.



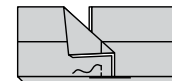
31. To make each bow, fold BOW (9) in half, lengthwise, with RIGHT sides together. Stitch notched edge. TRIM SEAM.



32. Turn bow RIGHT side out, bringing seam to center on UNDERSIDE; press.

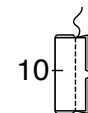


33. Bring back ends to UNDERSIDE, having ends extend 5/8" (1.5cm) beyond center. Stitch along center line.



34. Fold KNOT (10) in half, lengthwise, with RIGHT sides together.

Stitch notched edge.

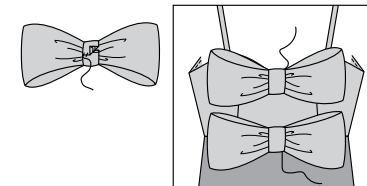


35. Turn knot RIGHT side out, bringing seam to center on UNDERSIDE; press.



36. Crush bow at center and place knot around center of bow, turning under and lapping one end on UNDERSIDE. SLIPSTITCH ends securely catching in UNDERSIDE of bow.

On OUTSIDE, hand-tack bows to bodice, along upper and lower edges, matching centers, as shown on envelope.





Congrats!

You've completed your sewing adventure

SHARE YOUR LOOK



Post your pattern and tag us using [#simplicitypatterns](#)
[@simplicity_creative_group](#)
[@simplicitymccallsuk](#)
[@simplicitymccallsaustralia](#)
for a chance to be featured on our social media.

Look for more PDF patterns at [simplicity.com](#) or for customers outside the U.S. and Canada visit [sewdirect.com](#) and [sewdirect.com.au](#)

Have a question or need help with your sewing project contact us:
[Simplicity.com](#) [Sewdirect.com](#) [Sewdirect.com.au](#)

McCall's
by **design**_{group}

McCall's ©2025 a division of IG Design Group Americas Inc. • Atlanta, GA 30342 USA [www.thedesigngroup.com](#) • All Rights Reserved. [www.mccall.com](#) • Made in the U.S.A. Fabriqué aux États-Unis.
To be used for individual private home use only and not for commercial or manufacturing purposes. • A usage privé seulement et non à des fins commerciales ou de production en série. • Para uso privado solamente, no se puede utilizar con propósitos de comercialización o de producción en serie.