

McCall's

M8580



Designed and printed in USA

This sewing pattern includes multiple view options with simple instructions. Show your maker!  
Ce patron de couture comprend plusieurs modèles avec des instructions faciles! Montrez votre réalisation!

Average

MISSES' SHIRT IN TWO LENGTHS

Suggested Fabrics: Cotton Blends, Linen, Poplin, Shirting Fabrics. Interfacing: Lightweight Fusible.

Notions: A,B: Nine 1/2" (1.3cm) buttons. C: Twelve 1/2" (1.3cm) buttons.

Sizes	6	8	10	12	14	16	18	20	22	24
European	32	34	36	38	40	42	44	46	48	50

BODY MEASUREMENTS: Select pattern size based on body measurements

Bust	30 1/2	31 1/2	32 1/2	34	36	38	40	42	44	46	Ins.
Waist	23	24	25	26 1/2	28	30	32	34	37	39	"
Hip -9" below waist	32 1/2	33 1/2	34 1/2	36	38	40	42	44	46	48	"
Back-neck to waist	15 1/2	15 3/4	16	16 1/4	16 1/2	16 3/4	17	17 1/4	17 1/2	17 3/4	"

Shirt A	45**	2	2	2	2 1/2	2 1/2	2 1/2	2 1/2	2 1/2	2 1/2	2 1/2	Yds.
60**	1 3/8	1 3/8	1 3/8	1 3/8	1 3/8	1 3/8	1 3/8	1 3/8	1 3/8	1 3/8	1 3/8	"

Interfacing A,B	20"	3/8	3/8	3/8	3/4	3/4	3/4	3/4	3/4	3/4	3/4	Yds.
Shirt B	45**	1 7/8	1 7/8	1 7/8	1 7/8	1 7/8	2 1/4	2 1/4	2 1/4	2 3/8	2 3/8	Yds.
60**	1 1/2	1 1/2	1 1/2	1 1/2	1 1/8	1 1/8	1 1/8	1 1/8	1 1/4	1 1/4	1 1/4	"

Shirt C	45**	2 1/4	2 1/4	2 1/4	2 1/4	2 1/4	2 1/2	2 1/2	2 1/2	2 1/2	2 3/4	Yds.
60**	1 3/4	1 3/4	1 3/4	1 3/4	1 7/8	1 7/8	1 7/8	2	2	2	2	"

Interfacing	20" - 7/8 yd.
Shirt C	2 1/2

FINISHED GARMENT MEASUREMENTS (Includes Design and Wearing Ease)

A,B,C Bust	33	34	35	36 1/2	38 1/2	40 1/2	42 1/2	44 1/2	46 1/2	48 1/2	Ins.
A,B,C Waist	26 1/2	27 1/2	28 1/2	30	32	34	36	38	40	42	"
Width, lower edge											
Shirt B	32 1/4	33 1/4	34 1/4	35 3/4	37 3/4	39 3/4	41 3/4	43 3/4	45 3/4	47 3/4	Ins.
Finished back length from base of neck											
Shirt A,B	18 1/2	18 3/4	19	19 1/4	19 1/2	19 3/4	20	20 1/4	20 1/2	20 3/4	Ins.
Shirt C	25 1/2	25 3/4	26	26 1/4	26 1/2	26 3/4	27	27 1/4	27 1/2	27 3/4	"

\*with nap \*\*without nap

Moins Facile

CHEMISE EN DEUX LONGUEURS POUR JEUNES FEMMES

Tissus Conseillés: Cotonnades, Toile de lin, Popeline, Tissus shirting. Entoilage: Thermocollant léger.

Merci: A,B: 9 boutons de 1.3cm. C: 12 boutons de 1.3cm.

Tailles	6	8	10	12	14	16	18	20	22	24
Françaises	34	36	38	40	42	44	46	48	50	52
Européen	32	34	36	38	40	42	44	46	48	50

MESURES DU CORPS: Choisissez la taille du patron basée sur les mesures du corps

Poitrine	78	80	83	87	92	97	102	107	112	117	cm
Taille	58	61	64	67	71	76	81	87	94	99	"
Hanches (23cm au-dessous de la taille)	83	85	88	92	97	102	107	112	117	122	cm
Dos du cou à la taille	39.5	40	40.5	41.5	42	42.5	43	44	44.5	45	"

Chemise A	115cm*	1.8	1.8	1.8	2.2	2.2	2.3	2.3	2.3	2.4	2.4	m
150cm*	1.3	1.3	1.5	1.5	1.5	1.6	1.6	1.7	1.7	1.7	1.7	"

Entoilage A,B	51cm	0.6	0.6	0.6	0.6	0.7	0.7	0.7	0.7	0.7	0.7	m
Chemise B	115cm*	1.6	1.6	1.6	1.6	1.7	1.7	1.9	1.9	2.1	2.1	m
150cm*	1.3	1.4	1.4	1.4	1.4	1.4	1.4	1.4	1.5	1.5	"	

Chemise C	115cm*	1.8	1.8	1.8	2.1	2.1	2.1	2.1	2.2	2.3	2.3	m
150cm*	1.5	1.6	1.6	1.6	1.6	1.6	1.6	1.6	1.7	1.7	1.7	"

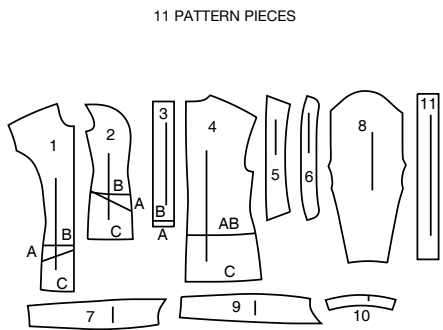
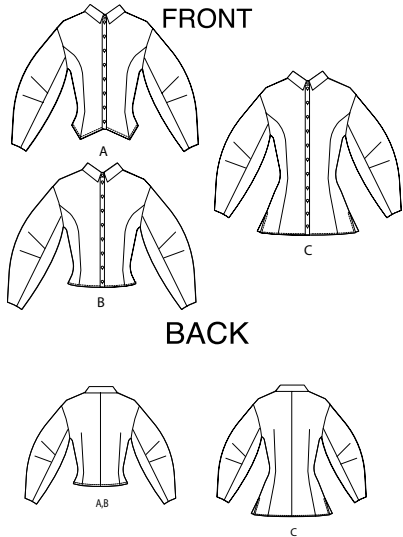
Entoilage	51cm - 0.8m
Chemise C	2 1/2

MESURES DES VÊTEMENTS FINI (Motif et aisance de port compris)

A,B,C Poitrine	84	86	89	93	98	103	108	113	118	123	cm
A,B,C Taille	67	70	72	76	81	86	91	97	102	107	"
Largeur à l'ourlet											
Chemise B	82	84	87	91	96	101	106	111	116	121	cm
Longueur finie - dos, votre nuque à l'ourlet											
Chemise A,B	47	48	48	49	50	50	51	51	52	53	cm
Chemise C	65	65	66	67	67	68	69	69	70	70	"

\*avec sens \*\*sans sens





- 1 Front-A,B,C
- 2 Side Front-A,B,C
- 3 Placket-A,B
- 4 Back-A,B,C
- 5 Collar-A,B,C
- 6 Collar Band-A,B,C
- 7 Sleeve Front-A,B,C
- 8 Middle Sleeve-A,B,C
- 9 Sleeve Back-A,B,C
- 10 Sleeve Facing-A,B,C
- 11 Placket-C

**PATTERN MARKINGS**

**GRAINLINE:** Place on straight grain of fabric, parallel to selvage or fold.

**FOLDLINE:** Place line on fold of fabric.

**BUTTONHOLE MARKING:** Indicates exact length and placement of buttonholes.

**BUTTON MARKING:** Indicates button placement.

**NOTCHES AND SYMBOLS:** For matching seams and construction details.

Indicates the Bustline, Waistline, Hip and/or Biceps. Measurements refer to circumference of Finished Garment (Body Measurement + Wearing Ease + Design Ease). Adjust pattern if necessary. The measurement excludes pleats, tucks, darts and seam allowances.

**SEAM ALLOWANCE:** 5/8" (1.5cm) included unless otherwise indicated, but not printed on tissue.

**ADJUST IF NECESSARY**

Lengthen or Shorten at adjustment lines (==) or where indicated on pattern. If substantial length is added, you may need to purchase additional fabric.

**TO SHORTEN:** Crease along adjustment line. Make a fold half the amount needed. Tape in place.

**TO LENGTHEN:** Slash between adjustment lines. Spread amount as needed, keeping edges parallel. Tape over paper.

When Alteration lines are not on tissue, lengthen or shorten at lower edge.

**CUTTING AND MARKING**

**SHRINK FABRIC** if not labeled pre-shrunk. Press.

**CIRCLE LAYOUT** for View, Size, Fabric Width.

Use **WITH NAP** layout for fabrics with one-way designs, nap, pile or surface shading. Because most knits have surface shading, a with nap layout is used.

For **DOUBLE THICKNESS (WITH FOLD)** - fold fabric with right sides together.

**\* DOUBLE THICKNESS (WITHOUT FOLD)** - For fabrics with nap, fold fabric crosswise, right sides together. Mark as shown. Cut along crosswise fold of fabric (A). Turn upper layer 180° so arrows go in same direction and place over lower layer, right sides together (B).

For **SINGLE THICKNESS** - place fabric right side up. (For Fur Pile fabrics, place pile side down.)

★ Cut other pieces first, allowing enough fabric to cut this piece. Open fabric. For "Cut 1" pieces, cut piece once on single layer of fabric with piece face up on right side of fabric.

Pattern may have cutting lines for several sizes. Select the proper cutting line or pattern pieces for your size.

Before **CUTTING** place all pieces on fabric according to layout. Pin. (**Layouts show approximate position of pattern pieces; position may vary according to your pattern size.**) Cut **ACCURATELY**, cutting notches outward.

Before removing pattern, **TRANSFER MARKINGS** and lines of construction to Wrong Side of fabric, using the Pin and Chalk Pencil method or Tracing Paper and Dressmaker Wheel. Markings needed on right side of fabric should be thread traced.

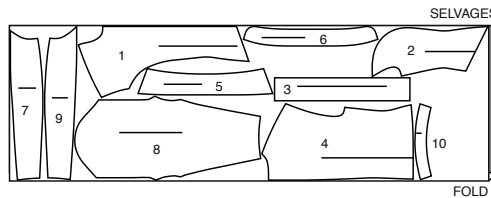
**NOTE:** Broken-line boxes (a! b! c!) in layouts represent pieces cut by measurements provided.

**CUTTING LAYOUTS**

**TOP A**

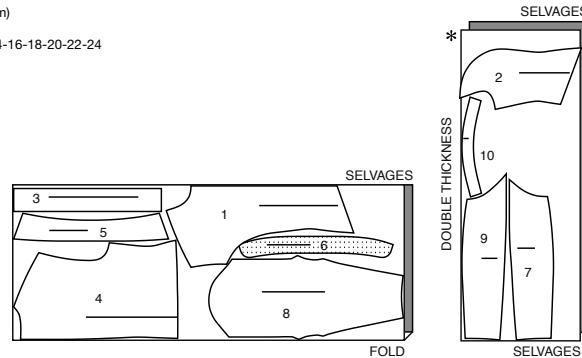
use pieces: 1 2 3 4 5 6 7 8 9 10

45" (115 cm)  
with nap  
sizes 6-8-10



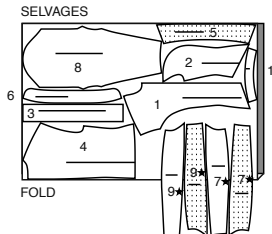
45" (115 cm)

with nap  
sizes 12-14-16-18-20-22-24

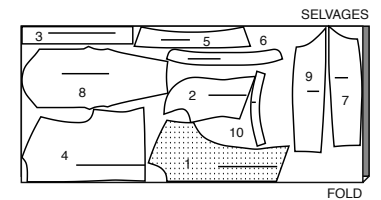


60" (150 cm)

with nap  
sizes 6-8



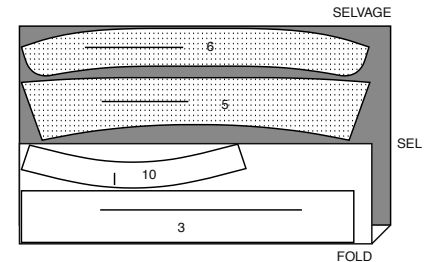
60" (150 cm)  
with nap  
sizes 10-12-14-16-18-20-22-24



**INTERFACING A**

use pieces: 3 5 6 10

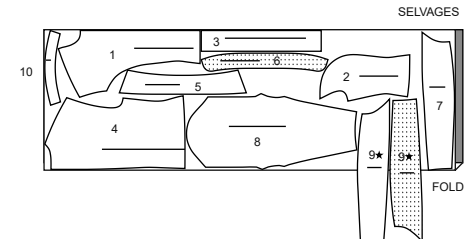
20" (51 cm)  
all sizes



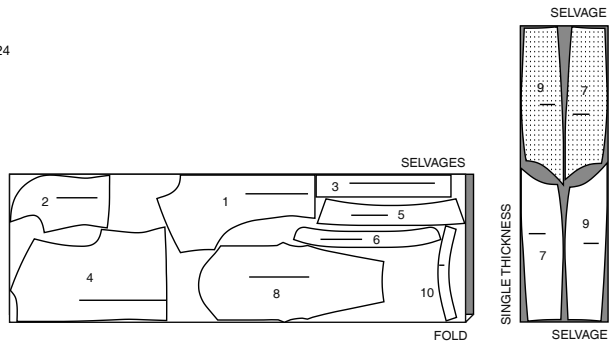
**TOP B**

use pieces: 1 2 3 4 5 6 7 8 9 10

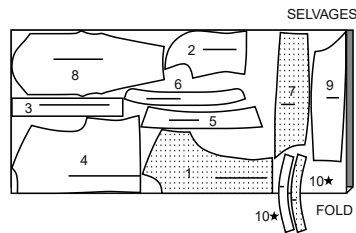
45" (115 cm)  
with nap  
sizes 6-8-10-12-14-16



45° (115 cm)  
with nap  
sizes 18-20-22-24



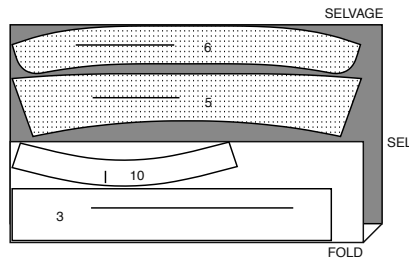
60° (150 cm)  
with nap  
all sizes



### INTERFACING B

use pieces: 3 5 6 10

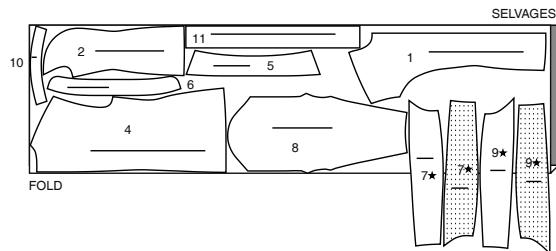
20° (51 cm)  
all sizes



### TOP C

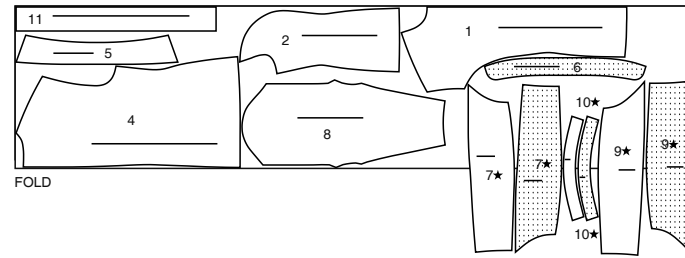
use pieces: 1 2 4 5 6 7 8 9 10 11

45° (115 cm)  
with nap  
sizes 6-8-10

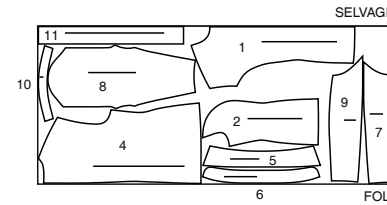


45° (115 cm)  
with nap  
sizes 12-14-16-18-20-22-24

### SELVAGES



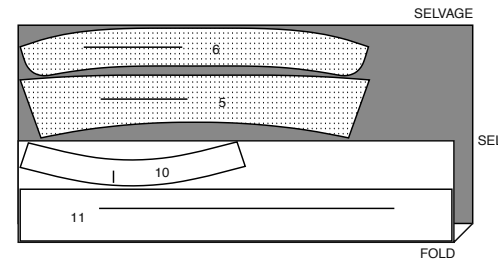
60° (150 cm)  
with nap  
all sizes



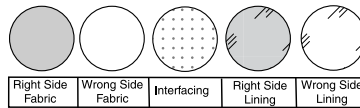
### INTERFACING C

use pieces: 5 6 10 11

20° (51 cm)  
all sizes

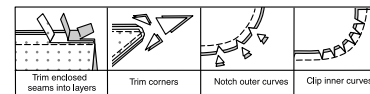


### SEWING INFORMATION FABRIC KEY



### SEAM ALLOWANCES

Use 5/8" (1.5cm) seam allowances unless otherwise indicated.



### PIN AND FIT

Pin or baste seams, RIGHT SIDE TOGETHER, matching notches. Fit garment before stitching major seams.

### PRESS

Press seam allowances flat; then open unless otherwise stated. Clip where necessary so they lie flat.

### GLOSSARY

Sewing terms appearing in **BOLD TYPE** in Sewing Instructions are explained below.

**EDGESTITCH** - Stitch close to finished edge or seam.

**FINISH** - Stitch 1/4" (6mm) from raw edge and finish with one of the following: (1) Pink OR (2) Overcast OR (3) Turn in along stitching and stitch close to fold OR (4) Overlock.

**NARROW HEM** - Turn in hem; press, easing in fullness if necessary. Open out hem. Turn in again so raw edge is along crease; press. Turn in along crease; stitch.

**SLIPSTITCH** - Slide needle through a folded edge, then pick up a thread of underneath fabric.

**STAYSTITCH** - Stitch 1/8" (3mm) from seamline in seam allowance (usually 1/2" (1.3cm) from raw edge).

**TOPSTITCH** - On outside, stitch 1/4" (6mm) from edge, seam or previous stitching, using presser foot as guide, or stitch where indicated in instructions.

**UNDERSTITCH** - Open out facing or underside of garment; stitch to seam allowance close to seam.

### SEWING TUTORIALS



Build your skills viewing short, easy-to-follow videos at [simplicity.com/sewingtutorials](http://simplicity.com/sewingtutorials)

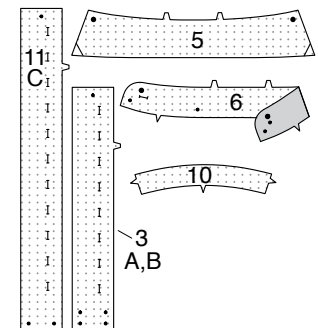
## SEWING DIRECTIONS

### TOP A, B, C

**NOTE:** Under each sub-heading, the first View will be illustrated, unless otherwise indicated

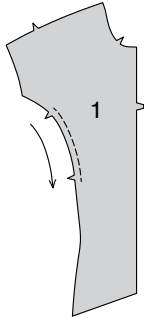
### INTERFACING

1. Pin INTERFACING to wrong side of each matching FABRIC section. Fuse, following manufacturer's instructions.

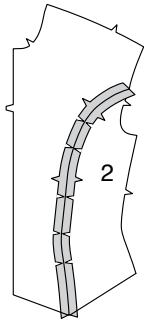


FRONT AND BACK

2. **STAYSTITCH** side edge of FRONT (1) in direction of arrow.



3. With **RIGHT** sides together, pin **SIDE FRONT (2)** to front, clipping front where necessary. Baste. Stitch.

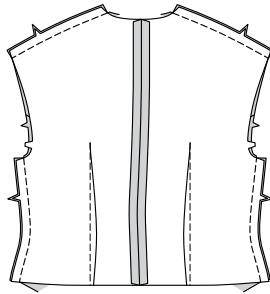


4. Stitch dart in **BACK (4)**. Press dart toward center. Stitch back sections together at center back.



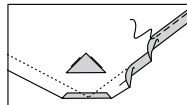
**VIEWS A, B:**

5. Stitch fronts to back at shoulders and sides.



**VIEW A:**

6. Make 5/8"(1.5cm) **NARROW HEM** at lower edges of top, diagonally folding corners at small dots, as shown. Trim corners.



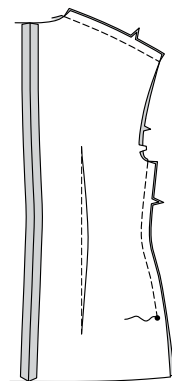
**VIEW B:**

7. Make 5/8"(1.5cm) **NARROW HEM** at lower edge of top.

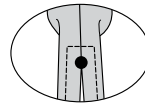
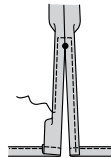
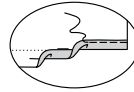


**VIEW C:**

8. Stitch fronts to back at shoulders and sides, leaving open below large dots.

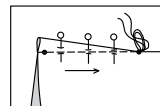
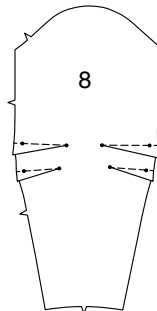


9. Make 5/8"(1.5cm) **NARROW HEM** at lower edges of top. Make 5/8"(1.5cm) **NARROW HEM** at side opening edges, tapering to nothing above large dot. Pivot across seam 1/4"(6mm) above large dot when stitching.

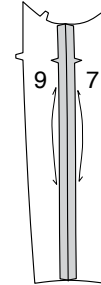


SLEEVE AND PLACKET

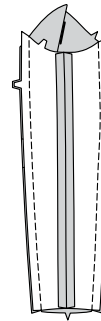
10. Stitch darts in **MIDDLE SLEEVE (8)**. Press darts down.



11. Stitch **SLEEVE FRONT (7)** to **SLEEVE BACK (9)** at underarm edge, matching notches.



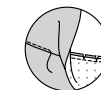
12. With **RIGHT** sides together, pin sleeve front and back to middle sleeve, matching notches. Stitch.



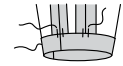
13. Stitch ends of **SLEEVE FACING (10)** together. **FINISH** upper unnotched edge of sleeve facing.



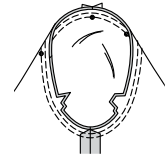
14. With **RIGHT** sides together, pin sleeve facing to lower edge of sleeve, matching seams and notches. Stitch. Trim. **UNDERSTITCH** facing.



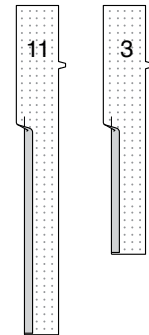
15. Turn facing to **INSIDE**. Press. Tack facing at seams.



16. With **RIGHT** sides together, pin sleeve into armhole, placing center small dot at shoulder seam, matching remaining small dots. Baste. Stitch. Stitch again 1/4"(6mm) away in seam allowance. Trim close to stitching. Press seam allowances flat. Turn seam toward sleeve.



17. Turn in seam allowance on long unnotched edge of **PLACKET (3)** or **PLACKET (11)**. Press. Trim pressed seam allowance to 3/8"(1cm).



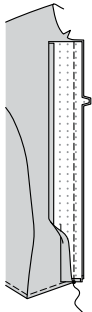
18. With **RIGHT** sides together, fold placket along foldline. Stitch lower edge. Trim.



19. Turn. Press.



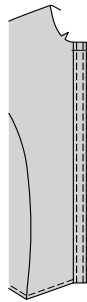
20. Pin placket to front, matching notches and small dots. Stitch. Trim. Press seam toward placket.



21. SLIPSTITCH pressed edge over seam. Baste across upper edge.

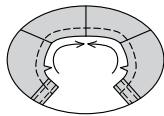


22. TOPSTITCH long edges of placket, as shown.

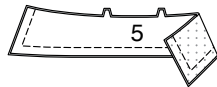


COLLAR AND FINISHING

23. STAYSTITCH neck edge in direction of arrows.



24. With right sides together, pin COLLAR (5) sections together, matching centers. Stitch, leaving notched edge open. Trim.



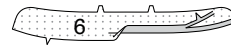
25. For facing, UNDERSTITCH interfaced collar.



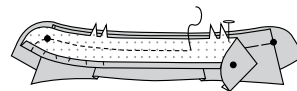
26. Turn. Press. Baste raw edges.



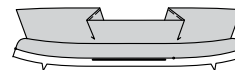
27. For facing, turn in seam allowance on lower edge of interfaced COLLAR BAND (6) section. Press, easing in fullness if necessary. Trim pressed seam allowance to 3/8" (1cm).



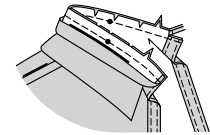
28. Pin collar to RIGHT side of uninterfaced collar band section, facing side down, matching centers and large dots. Baste. With RIGHT sides together, pin collar band facing to collar band, over collar, matching centers and symbols. Stitch, leaving lower edge open. Trim.



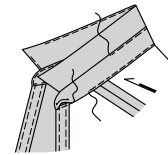
29. Turn. Press.



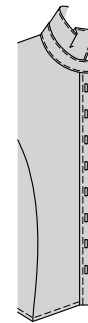
30. Pin collar band and collar to neck edge, matching centers, placing inner small dots at shoulder seams, matching remaining small dots, clipping neck edge where necessary. Baste. Stitch. Trim. Press seam toward collar band.



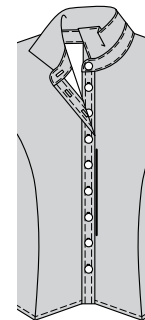
31. SLIPSTITCH pressed edge over seam. EDGESTITCH collar band.



32. Make buttonholes at right front at markings.



33. Lap opening edges, as shown, matching centers. Using buttonholes as guides, make button markings on left front. Sew buttons at markings. Make buttonhole in collar band at marking. Sew button to collar band at small dot.





# Congrats!

You've completed your sewing adventure

---

## SHARE YOUR LOOK



Post your pattern and tag us using [#simplicitypatterns](#)  
[@simplicity\\_creative\\_group](#)  
[@simplicitymccallsuk](#)  
[@simplicitymccallsaustralia](#)  
for a chance to be featured on our social media.

Look for more PDF patterns at [simplicity.com](#) or for customers outside the U.S. and Canada visit [sewdirect.com](#) and [sewdirect.com.au](#)

Have a question or need help with your sewing project contact us:  
[Simplicity.com](#)    [Sewdirect.com](#)    [Sewdirect.com.au](#)

**McCall's**  
by **design**<sub>group</sub>

McCall's ©2025 a division of IG Design Group Americas Inc. • Atlanta, GA 30342 USA [www.thedesigngroup.com](#) • All Rights Reserved. [www.mccall.com](#) • Made in the U.S.A. Fabriqué aux États-Unis.  
To be used for individual private home use only and not for commercial or manufacturing purposes. • A usage privé seulement et non à des fins commerciales ou de production en série. • Para uso privado solamente, no se puede utilizar con propósitos de comercialización o de producción en serie.