

McCall's

M8579



Designed and printed in USA

This sewing pattern includes multiple view options with simple instructions. Show your make!
Ce patron de couture comprend plusieurs modèles avec des instructions faciles! Montrez votre réalisation!

Average

MISSES' TOP IN TWO LENGTHS

Suggested Fabrics: Cotton Blends, Crepes, Lightweight Suiting Fabrics, Linen. **Interfacing:** Lightweight Fusible.

Notions: A,B,C: Five 5/8" (1.5cm) buttons, three 3/8" (1cm) shank buttons, 3/8 yd. (0.7m) of 1/4" (6mm) elastic.

Sizes	8	10	12	14	16	18	20	22	24	26
European	34	36	38	40	42	44	46	48	50	52

BODY MEASUREMENTS: Select pattern size based on body measurements

	8	10	12	14	16	18	20	22	24	26	Ins.
Bust	31 1/2	32 1/2	34	36	38	40	42	44	46	48	"
Waist	24	25	26 1/2	28	30	32	34	37	39	41	"
Hip-9" below waist	33 1/2	34 1/2	36	38	40	42	44	46	48	50	"
Back-neck to waist	15 3/4	16	16 3/4	16 1/2	16 3/4	17	17 1/4	17 1/2	17 3/4	18	"

Top A	45 TM	1 1/2	1 1/2	1 1/2	1 3/4	1 7/8	1 7/8	1 7/8	2	2	2	Yds.
	60 TM	1	1	1 3/8	1 3/8	1 1/2	1 1/2	1 1/2	1 1/2	1 1/2	1 1/2	"

Interfacing - 20" - 1 3/8 yds.

Top B	45 TM	1 1/4	1 3/4	2	2	2	2 1/8	2 1/8	2 1/8	2 1/8	2 1/8	Yds.
	60 TM	1 1/4	1 1/4	1 1/4	1 1/4	1 1/4	1 3/4	1 3/4	1 3/4	1 7/8	1 7/8	"

Interfacing B,C - 20" - 1 7/8 yds.

Top C	45 TM	1	1	1 1/8	1 1/8	1 1/4	1 1/4	1 1/4	1 1/4	1 3/8	Yds.
	60 TM	1	1	1 1/8	1 1/8	1 1/8	1 1/8	1 1/8	1 1/8	1 1/8	"

Contrast (Left Side)

	45 TM	1	1	1 1/8	1 1/8	1 1/8	1 1/8	1 1/8	1 1/8	1 1/4	Yds.
	60 TM	1	1	1 1/8	1 1/8	1 1/8	1 1/8	1 1/8	1 1/8	1 1/8	"

FINISHED GARMENT MEASUREMENTS (Includes Design and Wearing Ease)

A,B,C Bust	34	35	36 1/2	38 1/2	40 1/2	42 1/2	44 1/2	46 1/2	48 1/2	50 1/2	Ins.
A,B,C Waist	27	28	29 1/2	31 1/2	33 1/2	35 1/2	37 1/2	39 1/2	41 1/2	43 1/2	"

Width, lower edge

Top A	35	36	37 1/2	39 1/2	41 1/2	43 1/2	45 1/2	47 1/2	49 1/2	51 1/2	Ins.
Top B,C	38 3/4	39 3/4	41 1/4	43 1/4	45 1/4	47 1/4	49 1/4	51 1/4	53 1/4	55 1/4	"

Finished back length from base of neck

Top A	20 3/4	21	21 1/4	21 1/2	21 3/4	22	22 1/4	22 1/2	22 3/4	23	Ins.
Top B,C	24 1/2	24 3/4	25	25 1/4	25 1/2	25 3/4	26	26 1/4	26 1/2	26 3/4	"

*with nap **without nap

Moins Facile

HAUT EN DEUX LONGUEURS POUR JEUNES FEMMES

Tissus Conseillés: Cotonnades, Crêpes, Tissus pour costumes légers, Toile de lin. **Entoilage:** Thermocollant léger.

Mercurie: A,B,C: 5 boutons de 1.5cm, 3 boutons à tige de 1cm, 0.7m d'élastique de 6mm.

Tailles	8	10	12	14	16	18	20	22	24	26
Françaises	36	38	40	42	44	46	48	50	52	54
Européen	34	36	38	40	42	44	46	48	50	52

MESURES DU CORPS: Choisissez la taille du patron basée sur les mesures du corps

Poitrine	80	83	87	92	97	102	107	112	117	122	cm
Taille	61	64	67	71	76	81	87	94	99	104	"
Hanches (23cm au-dessous de la taille)	85	88	92	97	102	107	112	117	122	127	cm
Dos du cou à la taille	40	40.5	41.5	42	42.5	43	44	44.5	45	46	"

Haut A	115cm*	1.4	1.4	1.4	1.6	1.7	1.7	1.7	1.8	1.8	m
	150cm*	0.9	0.9	1.3	1.3	1.4	1.4	1.4	1.5	1.5	"

Entoilage - 51cm - 1.5m

Haut B	115cm*	11.5	1.6	1.8	1.8	1.8	1.9	1.9	1.9	1.9	m
	150cm*	11.1	1.5	1.5	1.5	1.5	1.6	1.6	1.6	1.7	"

Entoilage B,C - 51cm - 1.7m

Haut C	115cm*	0.9	0.9	0.9	1.0	1.0	1.1	1.1	1.1	1.1	m
	150cm*	0.9	0.9	0.9	1.0	1.0	1.0	1.0	1.0	1.0	"

Contraste (côté gauche)

	115cm*	0.9	0.9	0.9	1.0	1.0	1.0	1.0	1.0	1.0	m
	150cm*	0.9	0.9	0.9	1.0	1.0	1.0	1.0	1.0	1.0	"

MESURES DES VÊTEMENTS FINI (Motif et aisance de port compris)

A,B,C Poitrine	86	89	93	98	103	108	113	118	123	128	cm
A,B,C Taille	69	71	75	80	85	90	95	100	105	110	"

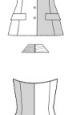
Largeur à l'ourlet

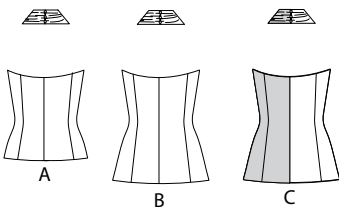
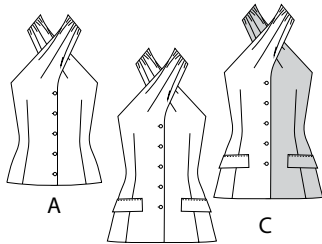
Haut A	89	91	95	100	105	110	116	121	126	131	cm
Haut B,C	98	101	105	110	115	120	125	130	135	140	"

Longueur finie - dos, votre nuque à l'ourlet

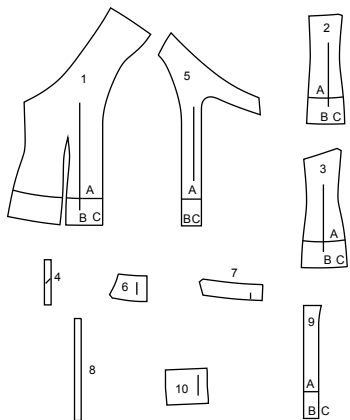
Haut A	53	53	54	55	55	56	57	57	58	58	cm
Haut B,C	62	63	64	64	65	65	66	67	67	68	"

*avec sens **sans sens



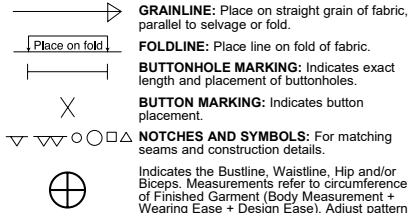


10 PATTERN PIECES



- 1 FRONT - A,B,C
- 2 BACK - A,B,C
- 3 SIDE BACK - A,B,C
- 4 LOOP - A,B,C
- 5 FRONT FACING - A,B,C
- 6 NECK FACING - A,B,C
- 7 BACK FACING - A,B,C
- 8 GUIDE FOR ELASTIC - A,B,C
- 9 GUIDE FOR BUTTONHOLES - A,B,C
- 10 FLAP - B,C

PATTERN MARKINGS



GRAINLINE: Place on straight grain of fabric, parallel to selvage or fold.

FOLDLINE: Place line on fold of fabric.

BUTTONHOLE MARKING: Indicates exact length and placement of buttonholes.

BUTTON MARKING: Indicates button placement.

NOTCHES AND SYMBOLS: For matching seams and construction details.

Indicates the Bustline, Waistline, Hip and/or Biceps. Measurements refer to circumference of Finished Garment (Body Measurement + Wearing Ease + Design Ease). Adjust pattern if necessary. The measurement excludes pleats, tucks, darts and seam allowances.

SEAM ALLOWANCE: 5/8" (1.5cm) included unless otherwise indicated, but not printed on tissue.

ADJUST IF NECESSARY

Lengthen or Shorten at adjustment lines (==) or where indicated on pattern. If substantial length is added, you may need to purchase additional fabric.

TO SHORTEN: Crease along adjustment line. Make a fold half the amount needed. Tape in place.

TO LENGTHEN: Slash between adjustment lines. Spread amount as needed, keeping edges parallel. Tape over paper.

When Alteration lines are not on tissue, lengthen or shorten at lower edge.

CUTTING AND MARKING

SHRINK FABRIC if not labeled pre-shrunk. Press.

CIRCLE LAYOUT for View, Size, Fabric Width.

Use **WITH NAP** layout for fabrics with one-way designs, nap, pile or surface shading. Because most knits have surface shading, a with nap layout is used.

For **DOUBLE THICKNESS (WITH FOLD)** - fold fabric with right sides together.

*** DOUBLE THICKNESS (WITHOUT FOLD)** - For fabrics with nap, fold fabric crosswise, right sides together. Mark as shown. Cut along crosswise fold of fabric (A). Turn upper layer 180° so arrows go in same direction and place over lower layer, right sides together (B).

For **SINGLE THICKNESS** - place fabric right side up. (For Fur Pile fabrics, place pile side down.)

★ Cut other pieces first, allowing enough fabric to cut this piece. Open fabric. For "Cut 1" pieces, cut piece once on single layer of fabric with piece face up on right side of fabric.

Pattern may have cutting lines for several sizes. Select the proper cutting line or pattern pieces for your size.

Before **CUTTING** place all pieces on fabric according to layout. Pin. (Layouts show approximate position of pattern pieces; position may vary according to your pattern size.) Cut **ACCURATELY**, cutting notches outward.

Before removing pattern, **TRANSFER MARKINGS** and lines of construction to Wrong Side of fabric, using the Pin and Chalk Pencil method or Tracing Paper and Dressmaker Wheel. Markings needed on right side of fabric should be thread traced.

NOTE: Broken-line boxes (a! b! c!) in layouts represent pieces cut by measurements provided.

CUTTING LAYOUTS

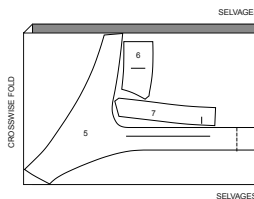
RIGHT SIDE OF PATTERN	WRONG SIDE OF PATTERN	RIGHT SIDE OF FABRIC	WRONG SIDE OF FABRIC
-----------------------	-----------------------	----------------------	----------------------

INTERFACING A,B,C

USE PIECES: 5 6 7

NOTE: DASH LINE IS FOR SHORTER VIEW

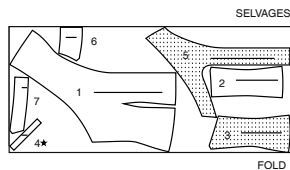
20" (51CM) ALL SIZES



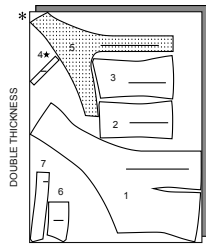
TOP A

USE PIECES: 1 2 3 4 5 6 7
CUT ONE OF PIECE 4

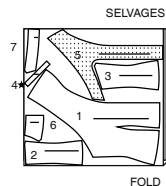
45" (115CM) WITH NAP
SIZES 8 10 12



45" (115CM) WITH NAP
SIZES 14 16 18 20 22 24 26



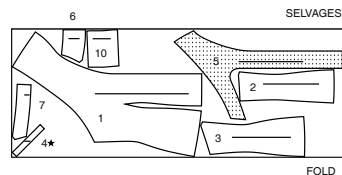
60" (150CM) WITH NAP
SIZES 8 10



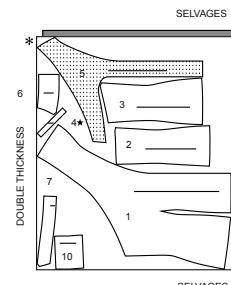
TOP B

USE PIECES: 1 2 3 4 5 6 7 10
CUT ONE OF PIECE 4

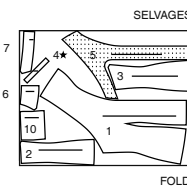
45" (115CM) WITH NAP
SIZES 8 10



45" (115CM) WITH NAP
SIZES 12 14 16 18 20 22 24 26



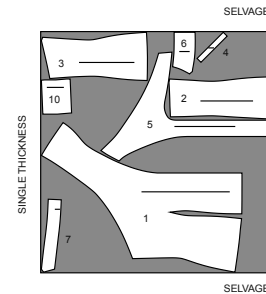
60" (150CM) WITH NAP
SIZE 8



TOP C

USE PIECES: 1 2 3 4 5 6 7 10
CUT ONE OF PIECE 4

45" (115CM) WITH NAP
ALL SIZES



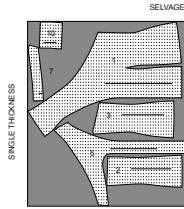
60" (150CM) WITH NAP
ALL SIZES



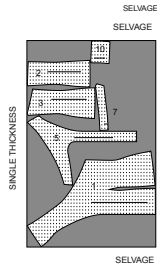
CONTRAST (LEFT SIDE)

USE PIECES: 1 2 3 5 6 7 10

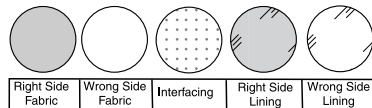
45" (115CM)
WITH NAP
ALL SIZES



60" (150CM)
WITH NAP
ALL SIZES

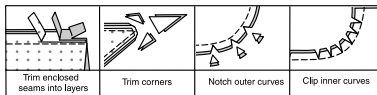


SEWING INFORMATION FABRIC KEY



SEAM ALLOWANCES

Use 5/8" (1.5cm) seam allowances unless otherwise indicated.



PIN AND FIT

Pin or baste seams, **RIGHT SIDE TOGETHER**, matching notches. Fit garment before stitching major seams.

PRESS

Press seam allowances flat; then open unless otherwise stated. Clip where necessary so they lie flat.

GLOSSARY

Sewing methods in **BOLD TYPE** have Sewing Tutorial Video available. Scan **QR CODE** to watch videos:

BLIND STITCH - See **Hand Stitching**: "how to sew a blind stitch" video.

GATHER - See **Gathering**: "sewing two row gathers" video.

STAYSTITCH - See **Machine Stitches**: "how to do stay stitching" video.

TOPSTITCH - See **Machine Stitches**: "how to topstitch" video.

TRIM SEAM - See **Seams**: "how to trim, clip and layer seams" video.

UNDERSTITCH - See **Machine Stitches**: "how to understitch" video.

SEWING TUTORIALS



Build your skills viewing short, easy-to-follow videos at simplicity.com/sewingtutorials

PATTERN PIECES WILL BE IDENTIFIED BY NUMBERS THE FIRST TIME THEY ARE USED.

STITCH 5/8" (1.5CM) SEAMS WITH RIGHT SIDES TOGETHER UNLESS OTHERWISE STATED.

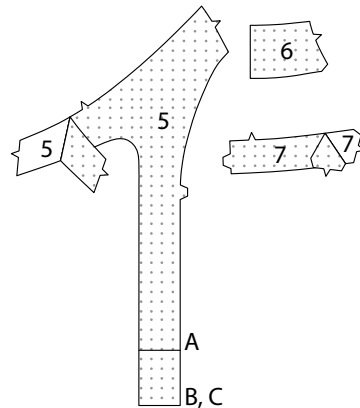
HALTER TOP A, B, C

NOTE: View A will be illustrated unless otherwise noted.

INTERFACING

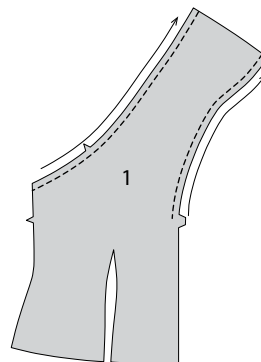
1. Pin interfacing to **WRONG** side of **FRONT FACING** (5), **NECK FACING** (6), and **BACK FACING** (7) sections.

Fuse in place following manufacturer's directions.



FRONT AND BACK

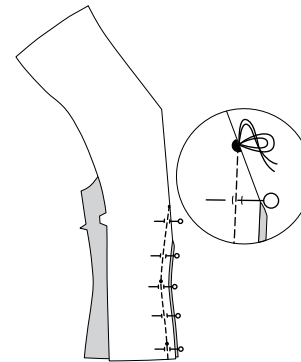
2. To **STAYSTITCH** neck edge of **FRONT** (1), stitch 1/2" (1.3cm) from cut edge in direction of arrows. This stitching stays in permanently to prevent stretching on curved edges. (Shown only in the first illustration.)



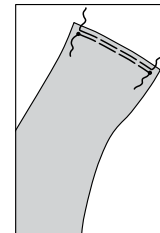
3. To stitch dart seam, with **RIGHT** sides together, bring broken lines together carefully matching small dots. On **INSIDE**, place pins at **RIGHT** angles to the broken lines. Stitch the dart seam from outer edge to the point.

Press the dart seam flat along the stitching to "blend" the stitches, then press dart toward center.

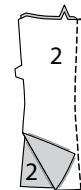
TIP- To prevent a "bubble" at the point, make the last few stitches right on the fold and leave the thread ends long enough to tie a knot. **DO NOT** back-stitch at the point.



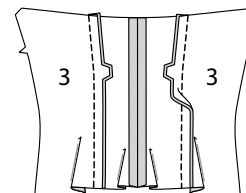
4. To **GATHER** center back edge of front between the small dots, loosen needle tension slightly. On **OUTSIDE**, stitch 5/8" (1.5cm) from cut edge using a long stitch. Stitch again 1/4" (6mm) from the first stitching within the seam allowance.



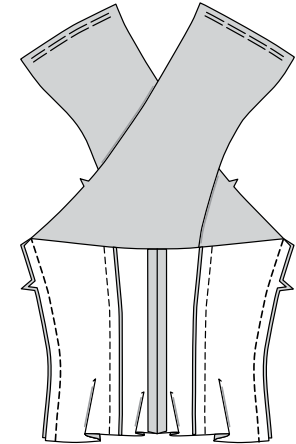
5. With **RIGHT** sides together and raw edges even, pin center back edges of **BACK** (2) sections. Stitch.



6. With **RIGHT** sides together and raw edges even, pin **SIDE BACK** (3) to back, matching notches. Stitch. Press seams toward center.



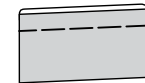
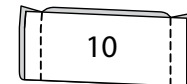
7. Pin front to side back at along side edges. Stitch. Press seam toward back.



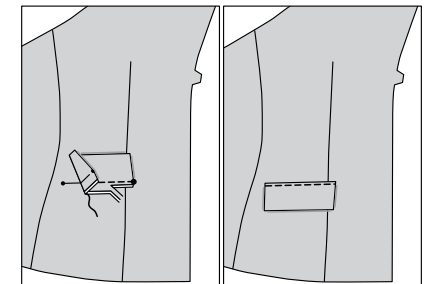
FLAPS B, C

8. Fold **FLAP** (10) along fold line with **RIGHT** sides together. Stitch ends. **TRIM SEAM.**

Turn flap; press. Baste raw edges together.

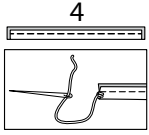


9. On **OUTSIDE**, pin flap to front, placing basting along placement line, matching small and large dots, as shown. Stitch along basting. Trim close to stitching. Turn flap down; press. **TOPSTITCH** a scant 1/4" (6mm) from upper edge.

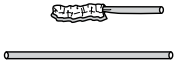


FACING

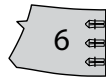
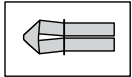
10. Fold LOOP (4) in half, lengthwise, with RIGHT sides together. Stitch 1/4" (6mm) from fold edge, stretching loop while stitching. With a needle, attach a strong thread to one end of loop.



11. Draw needle eye forward, through fold, turning loop RIGHT side out.



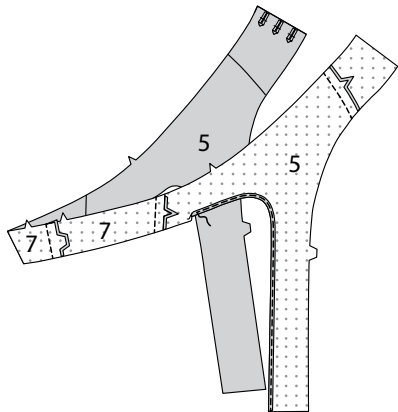
12. Cut three loops each 2-1/4" (5.7cm) long. Bring ends of loops together; baste. On OUTSIDE, pin loops to (LEFT) NECK FACING (6) at small dots with raw edges even. Baste.



13. With RIGHT sides together and raw edges even, pin FRONT FACING (5) to neck facing at ends, matching notches. Stitch.

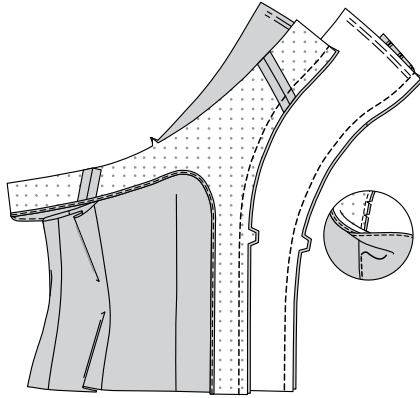
Pin BACK FACING (7) to front facing at ends, matching notches. Stitch. Stitch center back edges together.

To edge finish inner edge of facing, stitch 1/4" (6mm) from edge, turn under edge along stitching and stitch; or zigzag, or overlock edges.

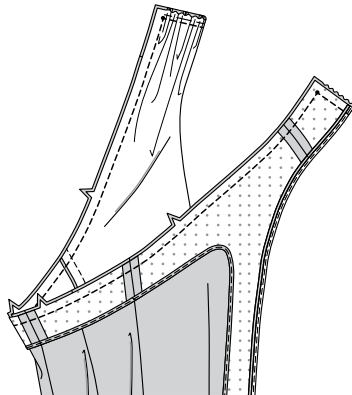


14. With RIGHT sides together and raw edges even, pin facing to double-notched front and neck edge. Stitch from lower edge to center back edge of neck facing. **TRIM SEAM.**

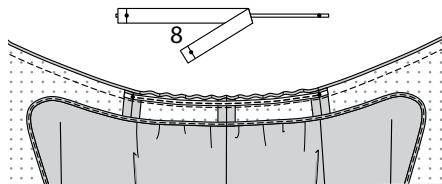
UNDERSTITCH the facing.



15. With RIGHT sides together and raw edges even, pin single-notches edges of facing to remaining neck edge and ends of garment, matching small dots and notches, pulling up gathering stitches to fit. Stitch upper edge and ends. **TRIM SEAM.**

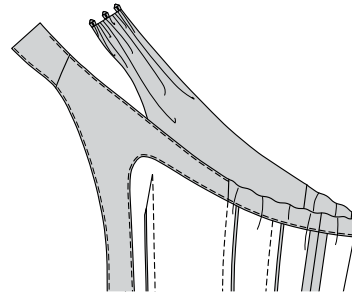


16. Cut a piece of elastic the length of the GUIDE FOR ELASTIC (8). Transfer markings. With the UNDERSIDE of the facing up, pin elastic to seam allowance of back facing, placing inner edge along seam, matching centers, and placing small dots at side seams. Stitch along inner edge of elastic, stretching elastic to fit while stitching.

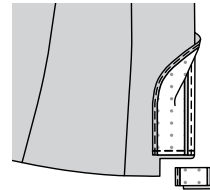


17. UNDERSTITCH remaining edges of facing as far as possible.

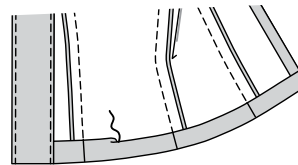
Turn facing to INSIDE; press, pressing out loops.



18. Turn lower edge of facing to OUTSIDE. Stitch across facing along 1-1/4" (3.2cm) hem allowance. Trim facing close to stitching. Trim garment to within 5/8" (1.5cm) of inner edge of facing.



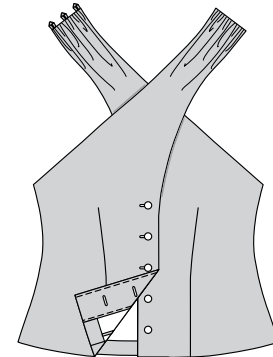
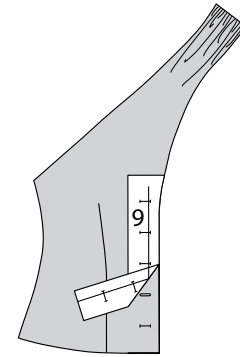
19. Turn facing to INSIDE; press, pressing up hem along marking. Press under 1/4" (6mm) on raw edge. Stitch hem in place, using a **BLIND STITCH.**



FINISHING

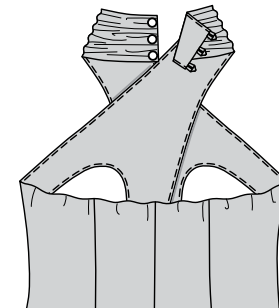
20. To mark buttonholes in RIGHT front, place GUIDE FOR BUTTONHOLES (9) along finished edge of garment, matching centers, as shown. Transfer buttonhole markings to garment. Make buttonholes at markings.

Lap RIGHT front over LEFT, matching centers. Sew 5/8" (1.5cm) buttons under buttonholes.



21. Button garment. Cross RIGHT front halter extension over LEFT front halter extension, as shown, bring ends together at center back.

On OUTSIDE, sew 3/8" (1cm) shank buttons to RIGHT back under loops.





Congrats!

You've completed your sewing adventure

SHARE YOUR LOOK



Post your pattern and tag us using [#simplicitypatterns](#)
[@simplicity_creative_group](#)
[@simplicitymccallsuk](#)
[@simplicitymccallsaustralia](#)
for a chance to be featured on our social media.

Look for more PDF patterns at [simplicity.com](#) or for customers outside the U.S. and Canada visit [sewdirect.com](#) and [sewdirect.com.au](#)

Have a question or need help with your sewing project contact us:
[Simplicity.com](#) [Sewdirect.com](#) [Sewdirect.com.au](#)

McCall's
by **design**_{group}

McCall's ©2025 a division of IG Design Group Americas Inc. • Atlanta, GA 30342 USA [www.thedesigngroup.com](#) • All Rights Reserved. [www.mccall.com](#) • Made in the U.S.A. Fabriqué aux États-Unis.
To be used for individual private home use only and not for commercial or manufacturing purposes. • A usage privé seulement et non à des fins commerciales ou de production en série. • Para uso privado solamente, no se puede utilizar con propósitos de comercialización o de producción en serie.