

McCall's

M8577



Designed and printed in USA

This sewing pattern includes multiple view options with simple instructions. Show your make!
Ce patron de couture comprend plusieurs modèles avec des instructions faciles! Montrez votre réalisation!

Average

MISSES' DRESS WITH SLEEVE AND LENGTH VARIATIONS

Suggested Fabrics: Cotton Blends, Denim, Linen, Twill.

Notions: A: One 22" (56cm) zipper, one pkg. of 1/2" (1.3cm) single fold bias tape. B,C: One 14" (36cm) zipper (cut to fit).

Sizes	8	10	12	14	16	18	20	22	24	26
European	34	36	38	40	42	44	46	48	50	52

BODY MEASUREMENTS: Select pattern size based on body measurements

	31½	32½	34	36	38	40	42	44	46	48	50	52	Ins.
Bust													
Waist	24	25	26½	28	30	32	34	37	39	41			"
Hip-9" below waist	33½	34½	36	38	40	42	44	46	48	50			"
Back-neck to waist	15¾	16	16¼	16½	16¾	17	17¼	17½	17¾	18			"

Dress A	45**	17%	17%	17%	17%	2	2	2¼	2¼	2¼	2¼	Yds.
	60**	1¾	1¾	1½	1½	1½	1½	1¾	1¾	1¾	1¾	"
Dress B	45**	1¾	1¾	1¾	1¾	1¾	2	2	2	2	Yds.	
	60**	1¼	1¼	1¼	1¼	1¾	1½	1½	1½	1½	"	
Dress C	45**	2%	2%	2%	2%	2%	3½	3½	3½	3½	Yds.	
	60**	2%	2%	2%	2%	2%	2%	2%	2%	2%	"	

FINISHED GARMENT MEASUREMENTS (Includes Design and Wearing Ease)

A Bust	35	36	37½	39½	41½	43½	45½	47½	49½	51½	Ins.
B,C Bust	34	35	36½	38½	40½	42½	44½	46½	48½	50½	"
A,B,C Waist	27½	28½	30	32	34	36	38	40	42	44	"
A,B,C Hip	40½	41½	43	45	47	49	51	53	55	57	"
Width, lower edge											
Dress A,B	49½	50½	52	54	56	58	60	62	64	66	Ins.
Dress C	69	70	71½	73½	75½	77½	79½	81½	83½	85½	"
Finished back length from base of neck											
Dress A,B	32¾	33	33¼	33½	33¾	34	34¼	34½	34¾	35	Ins.
Dress C	50¾	51	51¼	51½	51¾	52	52¼	52½	52¾	53	"

*with nap **without nap

Average

Moins Facile

ROBE AVEC VARIATIONS DE MANCHE ET DE LONGUEUR POUR JEUNES FEMMES

Tissus Conseillés: Cotonnades, Denim, Toile de lin, Twill.

Mercrier: A: 1 fermeture à glissière de 56cm, un paquet de ruban de biais simple de 1.3cm. B,C: 1 fermeture à glissière de 36cm (coupée pour ajuster).

Tailles	8	10	12	14	16	18	20	22	24	26
Françaises	36	38	40	42	44	46	48	50	52	54
Européen	34	36	38	40	42	44	46	48	50	52

MESURES DU CORPS: Choisissez la taille du patron basée sur les mesures du corps

Poitrine	80	83	87	92	97	102	107	112	117	122	cm
Taille	61	64	67	71	76	81	87	94	99	104	"
Hanches (23cm au-dessous de la taille)	85	88	92	97	102	107	112	117	122	127	cm
Dos du cou à la taille	40	40.5	41.5	42	42.5	43	44	44.5	45	46	"

Robe A	115cm*	1.7	1.7	1.7	1.7	1.8	1.8	2.1	2.1	2.1	2.1	m
	150cm*	1.3	1.3	1.3	1.4	1.4	1.4	1.5	1.5	1.5	1.5	"
Robe B	115cm*	1.6	1.6	1.6	1.6	1.6	1.6	1.8	1.8	1.8	1.8	m
	150cm*	1.1	1.1	1.1	1.1	1.1	1.3	1.3	1.4	1.4	1.4	"
Robe C	115cm*	2.6	2.6	2.6	2.6	2.6	2.6	3.2	3.2	3.2	3.2	m
	150cm*	2.2	2.2	2.2	2.2	2.2	2.2	2.4	2.4	2.4	2.4	"

MESURES DES VÊTEMENTS FINI (Motif et aisance de port compris)

A Poitrine	89	91	95	100	105	110	116	121	126	121	cm
B,C Poitrine	86	89	93	98	103	108	113	118	123	128	"
A,B,C Taille	70	72	76	81	86	91	97	102	107	112	"
A,B,C Hanches	103	105	109	114	119	124	130	135	140	145	"
Largeur à l'ourlet											
Robe A,B	126	128	132	137	142	147	152	157	163	168	cm
Robe C	175	178	182	187	192	197	202	207	212	217	"
Longueur finie – dos, votre nuque à l'ourlet											
Robe A,B	83	84	84	85	86	86	87	88	88	89	cm
Robe C	129	130	130	131	131	132	133	133	134	135	"

*avec sens **sans sens



A



B



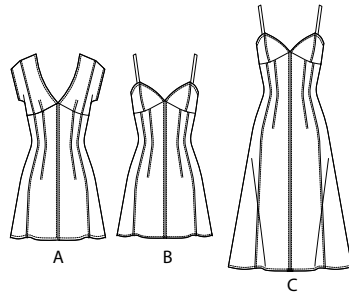
B



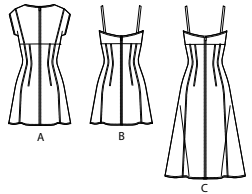
C



C

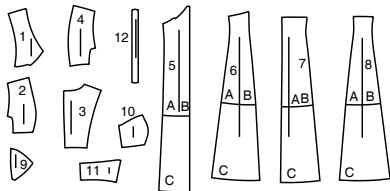


A B C



A B C

12 PATTERN PIECES



- 1 Bodice Front-A
- 2 Bodice Side Front-A
- 3 Bodice Back-A
- 4 Bodice Side Back-A
- 5 Skirt Front-A,B,C
- 6 Skirt Side Front-A,B,C
- 7 Skirt Back-A,B,C
- 8 Skirt Side Back-A,B,C
- 9 Bodice Front-B,C
- 10 Bodice Side Front-B,C
- 11 Bodice Back-B,C
- 12 Shoulder Strap-B,C

PATTERN MARKINGS

- GRAINLINE:** Place on straight grain of fabric, parallel to selvage or fold.
- FOLDLINE:** Place line on fold of fabric.
- BUTTONHOLE MARKING:** Indicates exact length and placement of buttonholes.
- BUTTON MARKING:** Indicates button placement.
- NOTCHES AND SYMBOLS:** For matching seams and construction details.
- Indicates the Bustline, Waistline, Hip and/or Biceps. Measurements refer to circumference of Finished Garment (Body Measurement + Wearing Ease + Design Ease). Adjust pattern if necessary. The measurement excludes pleats, tucks, darts and seam allowances.
- SEAM ALLOWANCE:** 5/8" (1.5cm) included unless otherwise indicated, but not printed on tissue.

ADJUST IF NECESSARY

- Lengthen or Shorten at adjustment lines (==) or where indicated on pattern. If substantial length is added, you may need to purchase additional fabric.
- TO SHORTEN:** Crease along adjustment line. Make a fold half the amount needed. Tape in place.
- TO LENGTHEN:** Slash between adjustment lines. Spread amount as needed, keeping edges parallel. Tape over paper.
- When Alteration lines are not on tissue, lengthen or shorten at lower edge.

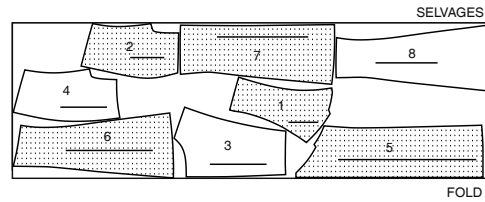
CUTTING AND MARKING

- SHRINK FABRIC** if not labeled pre-shrunk. Press.
- CIRCLE LAYOUT** for View, Size, Fabric Width. Use **WITH NAP** layout for fabrics with one-way designs, nap, pile or surface shading. Because most knits have surface shading, a with nap layout is used. For **DOUBLE THICKNESS (WITH FOLD)** - fold fabric with right sides together.
- * DOUBLE THICKNESS (WITHOUT FOLD)** - For fabrics with nap, fold fabric crosswise, right sides together. Mark as shown. Cut along crosswise fold of fabric (A). Turn upper layer 180° so arrows go in same direction and place over lower layer, right sides together (B).
- For **SINGLE THICKNESS** - place fabric right side up. (For Fur Pile fabrics, place pile side down.)
- ★ Cut other pieces first, allowing enough fabric to cut this piece. Open fabric. For "Cut 1" pieces, cut piece once on single layer of fabric with piece face up on right side of fabric.
- Pattern may have cutting lines for several sizes. Select the proper cutting line or pattern piece for your size.
- Before **CUTTING** place all pieces on fabric according to layout. Pin. (**Layouts show approximate position of pattern pieces; position may vary according to your pattern size.**) Cut **ACCURATELY**, cutting notches outward.
- Before removing pattern, **TRANSFER MARKINGS** and lines of construction to Wrong Side of fabric, using the Pin and Chalk Pencil method or Tracing Paper and Dressmaker Wheel. Markings needed on right side of fabric should be thread traced.
- NOTE:** Broken-line boxes (a! b! c!) in layouts represent pieces cut by measurements provided.

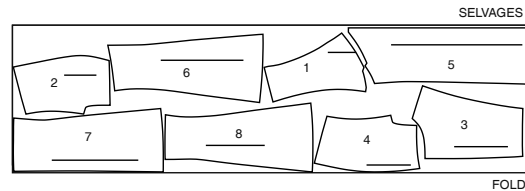
CUTTING LAYOUTS

DRESS A
USE PIECES 1 2 3 4 5 6 7 8

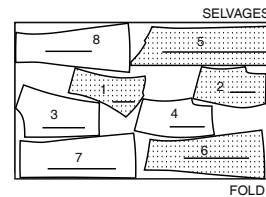
45" (115CM)
WITH NAP
SIZES 8 10 12 14 16 18



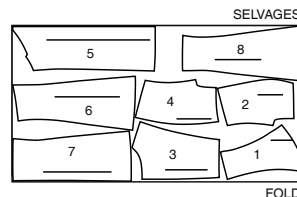
45" (115CM)
WITH NAP
SIZES 20 22 24 26



60" (150CM)
WITH NAP
SIZES 8 10 12 14 16 18

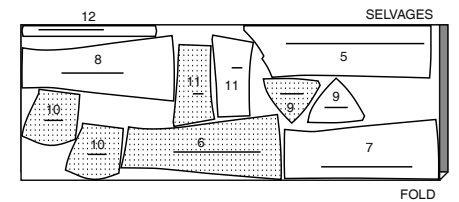


60" (150CM)
WITH NAP
SIZES 20 22 24 26

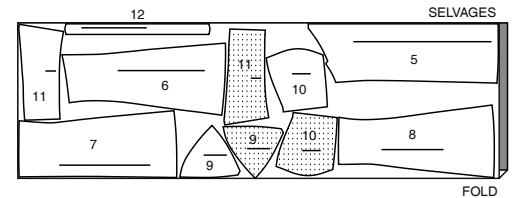


DRESS B
USE PIECES 5 6 7 8 9 10 11 12

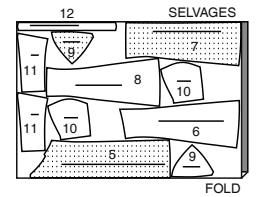
45" (115CM)
WITH NAP
SIZES 8 10 12 14 16 18



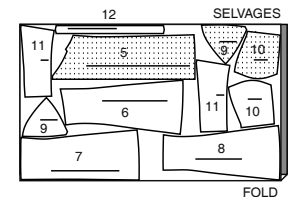
45" (115CM)
WITH NAP
SIZES 20 22 24 26



60" (150CM)
WITH NAP
SIZES 8 10 12 14 16



60" (150CM)
WITH NAP
SIZES 18 20 22 24 26



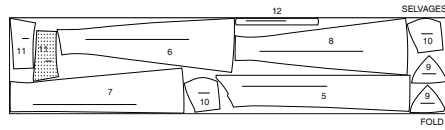
DRESS C

USE PIECES 5 6 7 8 9 10 11 12

45" (115CM)

WITH NAP

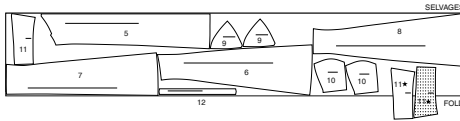
SIZES 8 10 12 14 16 18



45" (115CM)

WITH NAP

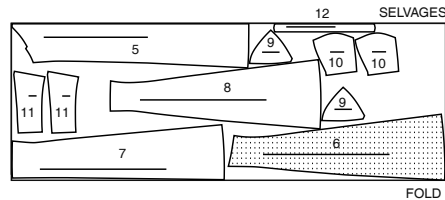
SIZES 20 22 24 26



60" (150CM)

WITH NAP

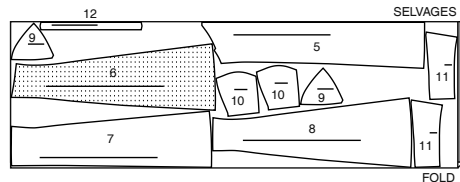
SIZES 8 10 12 14 16 18



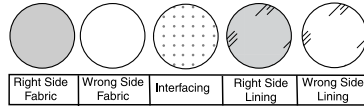
60" (150CM)

WITH NAP

SIZES 20 22 24 26

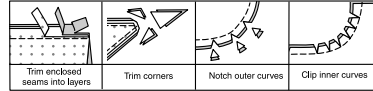


SEWING INFORMATION
FABRIC KEY



SEAM ALLOWANCES

Use 5/8" (1.5m) seam allowances unless otherwise indicated.



PIN AND FIT

Pin or baste seams, **RIGHT SIDE TOGETHER**, matching notches. Fit garment before stitching major seams.

PRESS

Press seam allowances flat; then open unless otherwise stated. Clip where necessary so they lie flat.

GLOSSARY

Sewing methods in **BOLD TYPE** have Sewing Tutorial Video available. Scan QR CODE to watch videos:

FLAT DART – See Darts: “sewing flat dart” video.

NARROW HEM – See Hems: “sewing narrow hems” video.

STITCH IN THE DITCH – See Machine Stitches: “how to stitch in the ditch” video.

TOPSTITCH – See Machine Stitches: “how to topstitch” video.

TRIM SEAM – See Seams: “how to trim, clip and layer seams” video.

UNDERSTITCH – See Machine Stitches: “how to understitch” video.

SEWING TUTORIALS



Build your skills viewing short, easy-to-follow videos at simplicity.com/sewingtutorials

PATTERN PIECES WILL BE IDENTIFIED BY NUMBERS THE FIRST TIME THEY ARE USED.

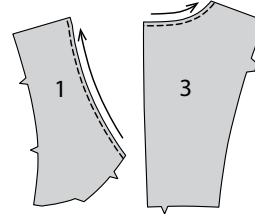
STITCH 5/8" (1.5CM) SEAMS WITH RIGHT SIDES TOGETHER UNLESS OTHERWISE STATED.

DRESS A, B, C

NOTE: TOPSTITCHING is added as a design element and is stitched in an order that will hide it under seam allowances where necessary.

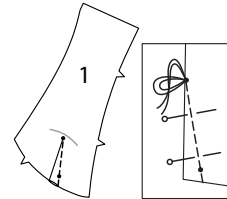
BODICE A

1. To staystitch neck edge of **BODICE FRONT (1)** and **BODICE BACK (3)** sections, stitch 1/4" (6mm) from cut edge in direction of arrows. This stitching stays in permanently to prevent stretching on curved edges. (Shown only in the first illustration.)



2. To make **FLAT DART**, with **RIGHT** sides together, fold the fabric through the center of the dart, bringing broken lines and small dots together. On **INSIDE**, place pins at **RIGHT** angles to the broken lines. Stitch the dart from wide end to point. Press the dart flat along the stitching to “blend” the stitches, then press dart toward center.

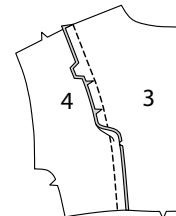
TIP - To prevent a “bubble” at the point, make the last few stitches right on the fold and leave the thread ends long enough to tie a knot. **DO NOT** back-stitch at the point.



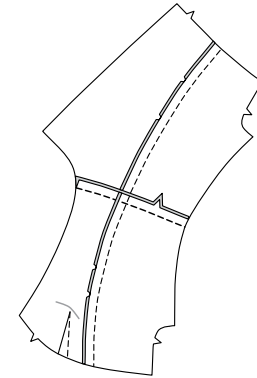
3. With **RIGHT** sides together and raw edges even, pin bodice front to **BODICE SIDE FRONT (2)** along side front edges, matching notches. Stitch. To flatten the seam, clip seam allowance to stitching along curve. Press seam toward front.



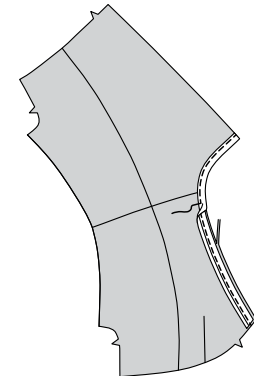
4. With **RIGHT** sides together and raw edges even, pin bodice back to **BODICE SIDE BACK (4)** along side back edges, matching notches. Stitch. To flatten the seam, clip seam allowance to stitching along curve. Press seam toward back.



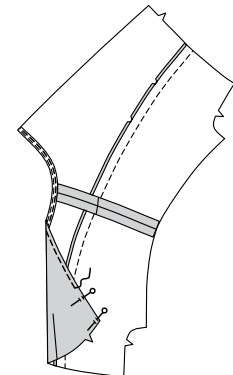
5. Stitch front to back at shoulder edges.



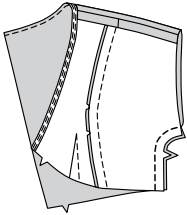
6. Open out one edge of single fold bias tape. With **RIGHT** sides together and raw edges even, pin tape to neck edge. Stitch in a 3/8" (1cm) seam. **TRIM SEAM.**



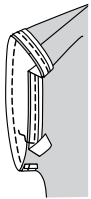
7. UNDERSTITCH the tape. Turn tape to **INSIDE**; press. On **INSIDE**, pin tape in place, placing pins on **OUTSIDE**. On **OUTSIDE**, **TOPSTITCH** 1/4" (6mm) from finished edge.



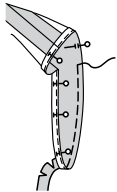
8. Stitch front to back at side edges. **TRIM SEAM.**



9. Open out one edge of single fold bias tape. With **RIGHT** sides together, pin tape to armhole edge having raw edges even, turning under and lapping one end at side seam. Stitch in a 3/8" (1cm) seam. **TRIM SEAM.**

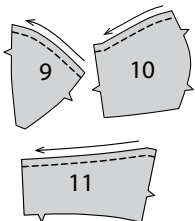


10. **UNDERSTITCH** the tape. Turn tape to **INSIDE**; press. On **INSIDE**, pin tape in place, placing pins on **OUTSIDE**. On **OUTSIDE**, **TOPSTITCH** 1/4" (6mm) from finished edge.

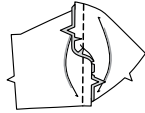


BODICE B, C

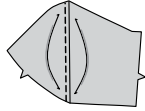
11. To staystitch neck edge of **BODICE FRONT** (9), **BODICE SIDE FRONT** (10), and **BODICE BACK** (11) sections, stitch 1/2" (1.3cm) from cut edge in direction of arrows. This stitching stays in permanently to prevent stretching on curved edges. (Shown only in the first illustration.)



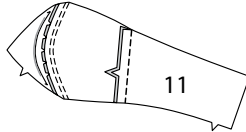
12. With **RIGHT** sides together and raw edges even, pin bodice front to bodice side front along side front edges, matching notches. Stitch. To flatten the seam, clip seam allowance to stitching along curve. Press seam toward front.



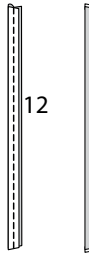
13. **TOPSTITCH** front 1/4" (6mm) from seam.



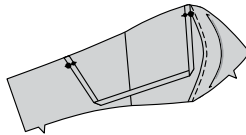
14. With **RIGHT** sides together and raw edges even, pin bodice front to bodice back along side edges, matching notches. Stitch.



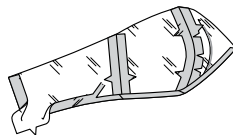
15. Fold **SHOULDER STRAP** (12) in half, lengthwise, with **RIGHT** sides together. Stitch in a 3/8" (1cm) seam. **TRIM SEAM.** Turn strap; press.



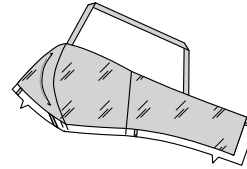
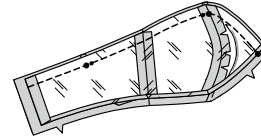
16. On **OUTSIDE**, pin ends of strap to bodice with raw edges even, matching small and large dots. **Baste.**



NOTE: For clarify purposes, bodice facing pieces will be toned as lining.
17. Stitch bodice facing sections together in the same manner as bodice, omitting topstitching and straps. Press under 3/4" (2cm) on back edges and 1/2" (1.3cm) on lower edge. Trim to 1/4" (6mm).

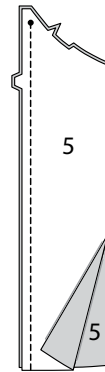


18. With **RIGHT** sides together and raw edges even, pin facing to bodice along upper edge, matching centers and seams. Stitch upper edge. **TRIM SEAM.** Press seam toward bodice.

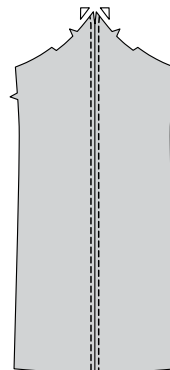


SKIRT A, B, C

19. With **RIGHT** sides together and raw edges even, pin center front edges of **SKIRT FRONT** (5), matching notches. Stitch from lower edge to large dot, back-stitching at dot to reinforce the seam. Press seam open.

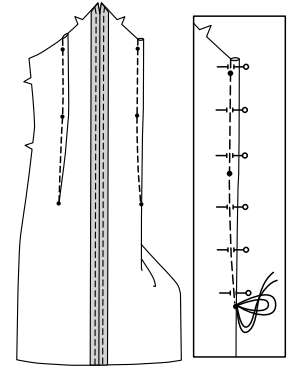


20. On **OUTSIDE**, **TOPSTITCH** front sections 1/4" (6mm) from seam and seam allowance extensions. Trim seam allowance even with upper edge.

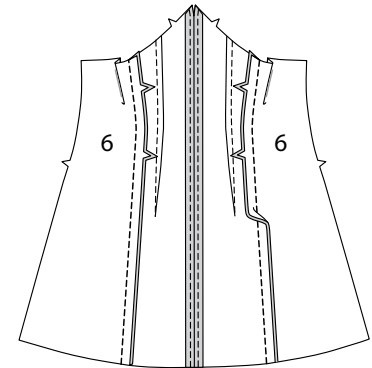


21. To stitch dart seam, with **RIGHT** sides together, bring broken lines together carefully matching small dots. On **INSIDE**, place pins at **RIGHT** angles to the broken lines. Stitch the dart seam from outer edge to the point. Press the dart seam flat along the stitching to "blend" the stitches, then press dart toward front.

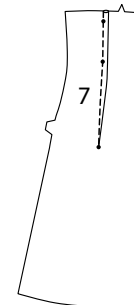
TIP - To prevent a "bubble" at the point, make the last few stitches right on the fold and leave the thread ends long enough to tie a knot. **DO NOT** back-stitch at the point.



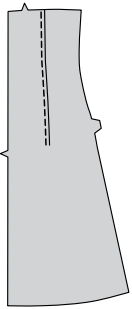
22. With **RIGHT** sides together and raw edges even, pin **SKIRT SIDE FRONT** (6) sections to skirt front along side front edges, matching notches. Stitch. Press seam toward front.



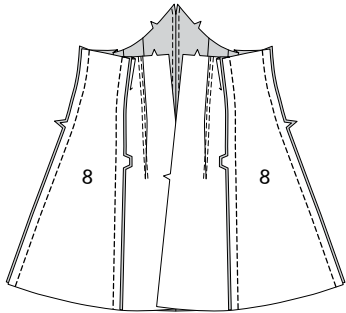
23. Stitch dart seam in **SKIRT BACK** (7) sections in the same manner as for skirt front. Press seam toward center.



24. On OUTSIDE, **TOPSTITCH** back sections 1/4" (6mm) from dart seam (toward center), ending abruptly at end of dart.

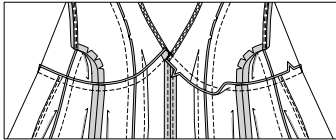


25. Stitch **SKIRT SIDE BACK (8)** to skirt back along side back edges, matching notches. Press seam toward back. Stitch skirt front to skirt back at side edges. Press seam open.

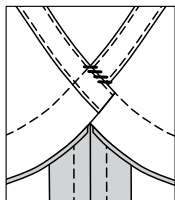


CONTINUE AS FOLLOWS FOR VIEW A

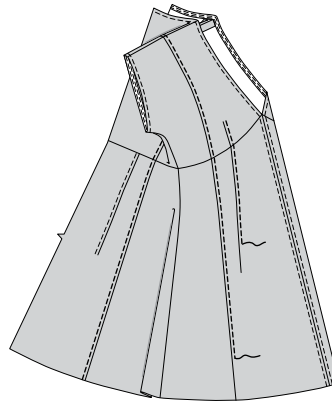
26. With **RIGHT** sides together and raw edges even, pin bodice sections to skirt, matching centers, seams, notches, and large dots. Working on one half of garment at a time, stitch from back edge to large dot, back-stitching at dot to reinforce the seam. **TRIM SEAM.**



27. Press seam toward skirt, pressing bodice out. On **INSIDE**, lap **LEFT** seam allowance of bodice over **RIGHT**, folding out fullness. Tack **LEFT** end of seam allowance to **RIGHT** along finished bias edge, as shown.

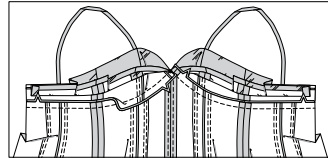


28. On **OUTSIDE**, in one continuous path **TOPSTITCH** front and back (bodice and skirt) 1/4" (6mm) from side front and back seam.
On **OUTSIDE**, in one continuous path **TOPSTITCH** front bodice and skirt 1/4" (6mm) from dart seam, beginning and ending abruptly at ends of dart.



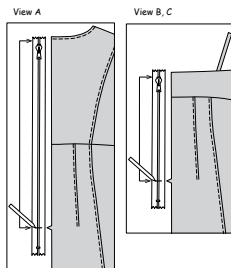
CONTINUE AS FOLLOWS FOR VIEW B

29. Open out the facing. With **RIGHT** sides together and raw edges even, pin bodice sections to skirt, matching centers, seams, notches, and large dots. Working on one half of garment at a time, stitch from back edge to large dot, back-stitching at dot to reinforce the seam. **TRIM SEAM.** Press seam toward bodice, pressing bodice out.

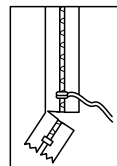


CONTINUE AS FOLLOWS FOR ALL VIEWS

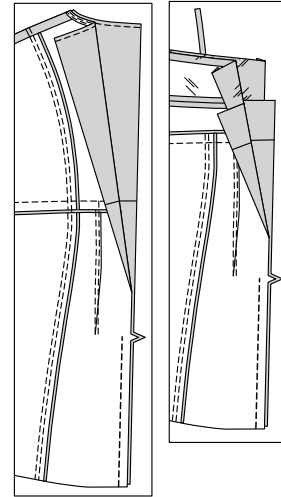
30. It may be necessary to adjust the length of your zipper. Measure the opening of dress from notch to seam line at upper edge, less 1/4" (6mm). Close the zipper and measure from the tab down along the teeth to the length needed. Mark new length.



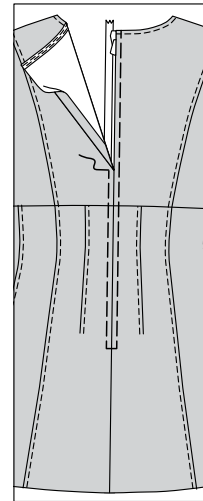
31. With matching buttonhole twist or heavy-duty thread, make several overcast stitches across zipper teeth at marking. Trim away lower end of zipper tape to within 5/8" (1.5cm) of overcast stitches.



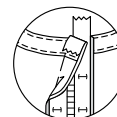
32. Stitch center back seam of dress from lower edge to notch, back-stitching at notch to reinforce the seam.



33. Press under 5/8" (1.5cm) on back opening edges. Pin closed zipper under opening edges with tab 1/4" (6mm) from upper edge of opening, having edges meet at center of zipper. Baste. Stitch 1/4" (1cm) each side of center from notch to upper edge.

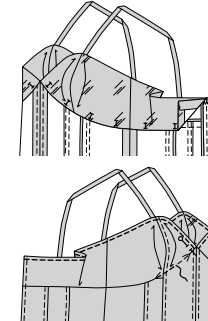


34. **FOR VIEW A** – Turn upper ends of zipper tape over seam allowances. Hand-baste, connecting to previous basting.

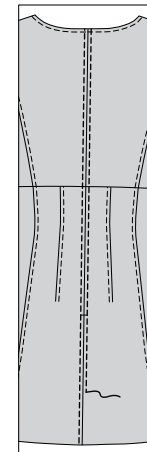


35. **FOR VIEW B, C** – Fold under upper ends of zipper tape away from center back.

On **INSIDE**, pin pressed lower edge of facing over seam, placing pins on **OUTSIDE**. On **OUTSIDE**, **STITCH IN THE DITCH** of the seam, between back zipper stitching, catching in lower pressed edge of facing on the **INSIDE**. Pin facing over zipper tape at back edges. Slip-stitch in place. **TOPSTITCH** 1/4" (6mm) from finished upper edge.

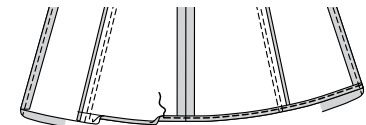


36. **FOR ALL VIEWS** – **TOPSTITCH** 1/4" (6mm) each side of center back from zipper stitching to lower edge, using an adjustable zipper foot.

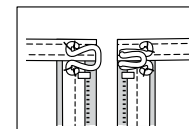


FINISHING

37. Press under 5/8" (1.5cm) hem allowance. To form **NARROW HEM**, tuck under raw edge to meet crease. Press. Stitch hem in place.



38. On inside, sew hook and eye to upper edge of dress over zipper. If you prefer, sew 1" (2.5cm) – 2" (5cm) shank buttons to upper edge of bodice front over straps, as shown on front of envelope.





Congrats!

You've completed your sewing adventure

SHARE YOUR LOOK



Post your pattern and tag us using [#simplicitypatterns](#)
[@simplicity_creative_group](#)
[@simplicitymccallsuk](#)
[@simplicitymccallsaustralia](#)
for a chance to be featured on our social media.

Look for more PDF patterns at [simplicity.com](#) or for customers outside the U.S. and Canada visit [sewdirect.com](#) and [sewdirect.com.au](#)

Have a question or need help with your sewing project contact us:
[Simplicity.com](#) [Sewdirect.com](#) [Sewdirect.com.au](#)

McCall's
by **design**_{group}

McCall's ©2025 a division of IG Design Group Americas Inc. • Atlanta, GA 30342 USA [www.thedesigngroup.com](#) • All Rights Reserved. [www.mccall.com](#) • Made in the U.S.A. Fabriqué aux États-Unis.
To be used for individual private home use only and not for commercial or manufacturing purposes. • A usage privé seulement et non à des fins commerciales ou de production en série. • Para uso privado solamente, no se puede utilizar con propósitos de comercialización o de producción en serie.