

For customers outside of the U.S. and Canada

sewdirect.com sewdirect.com.au

Shop all the pattern brands you love @
Simplicity®.com

McCall's

B

M8576

A

C

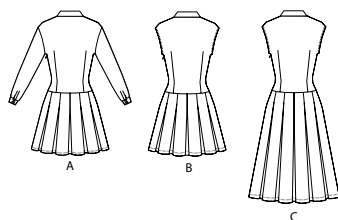
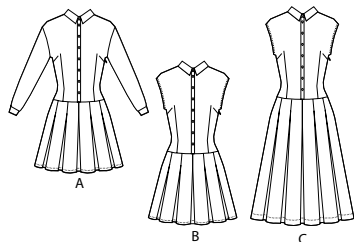
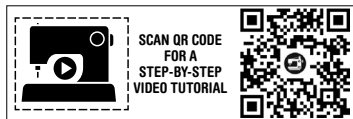
Designed and printed in USA

This sewing pattern includes multiple view options with simple instructions. Show your make!
Ce patron de couture comprend plusieurs modèles avec des instructions faciles! Montrez votre réalisation!

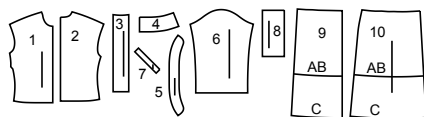
Average											
MISSES' DRESS WITH SLEEVE AND LENGTH VARIATIONS											
Suggested Fabrics: Cotton Blends, Gingham, Linen, Shirting Fabrics. Interfacing: Lightweight Fusible.											
Notions: A, B, C: One 12" (30cm) invisible zipper. Also for A: Twelve 5/8" (1.5cm) buttons. Also for B, C: One pkg. of 1/2" (1.3cm) single fold bias tape, eight 5/8" (1.5cm) buttons.											
Sizes	6	8	10	12	14	16	18	20	22	24	
European	32	34	36	38	40	42	44	46	48	50	
BODY MEASUREMENTS: Select pattern size based on body measurements											
Bust	30½	31½	32½	34	36	38	40	42	44	46	Ins.
Waist	23	24	25	26½	28	30	32	34	37	39	"
Hip-9" below waist	32½	33½	34½	36	38	40	42	44	46	48	"
Back-neck to waist	15½	15¾	16	16¼	16½	16¾	17	17¼	17½	17¾	"
Dress A	45**	3	3	3½	3½	3½	3½	3½	3½	3½	Yds.
	60**	2½	2½	2½	2½	2½	2½	2½	2½	2½	"
Interfacing	20"	1	1	1	1	1	1	1½	1½	1½	"
Dress B	45**	2¾	2¾	2¾	2¾	2¾	2¾	2¾	2¾	2¾	Yds.
	60**	1¾	1¾	1¾	2	2	2¼	2¼	2¼	2¾	"
Interfacing B,C	20"	5/8	5/8	¾	¾	¾	¾	¾	¾	¾	Yd.
Dress C	45**	3½	3½	3½	3½	3½	3¾	4	4	4	Yds.
	60**	2¾	2½	2¾	3¾	3¾	3¾	3¾	3¾	3¾	"
FINISHED GARMENT MEASUREMENTS (Includes Design and Wearing Ease)											
A,B,C Bust	34	35	36	37½	39½	41½	43½	45½	47½	49½	Ins.
A,B,C Waist	27	28	29	30½	32½	34½	36½	38½	40½	42½	"
Finished back length from base of neck											
Dress A,B	32¼	32½	32¾	33	33¼	33½	33¾	34	34¼	34½	Ins.
Dress C	42¼	42½	42¾	43	43¼	43½	43¾	44	44¼	44½	"

Moins Facile											
ROBE AVEC VARIATIONS DE MANCHE ET DE LONGUEUR POUR JEUNES FEMMES											
Tissus Conseillés: Cotonnades, Vichy, Toile de lin, Tissus de shirting. Entoilage: Thermocollant léger.											
Mercerie: A,B,C: 1 fermeture à glissière invisible de 30cm. Aussi pour A: 12 boutons de 1.5cm. Aussi pour B,C: 1 paquet de ruban de biais simple de 1.3cm, 8 boutons de 1.5cm.											
Tailles	6	8	10	12	14	16	18	20	22	24	
Françaises	34	36	38	40	42	44	46	48	50	52	
Européen	32	34	36	38	40	42	44	46	48	50	
MESURES DU CORPS: Choisissez la taille du patron basée sur les mesures du corps											
Poitrine	78	80	83	87	92	97	102	107	112	117	cm
Taille	58	61	64	67	71	76	81	87	94	99	"
Hanches (23cm au-dessous de la taille)	83	85	88	92	97	102	107	112	117	122	cm
Dos du cou à la taille	39.5	40	40.5	41.5	42	42.5	43	44	44.5	45	"
Robe A	115cm*	2.7	2.7	2.9	2.9	2.9	3.1	3.1	3.1	3.1	m
	150cm*	2.2	2.2	2.3	2.3	2.6	2.6	2.6	2.6	2.6	"
Entoilage	51cm	0.8	0.9	0.9	0.9	0.9	0.9	0.9	1.0	1.0	"
Robe B	115cm*	2.2	2.2	2.2	2.2	2.5	2.5	2.6	2.6	2.6	m
	150cm*	1.7	1.7	1.7	1.8	1.8	2.1	2.1	2.1	2.2	"
Entoilage B,C	51cm	0.6	0.6	0.6	0.6	0.7	0.7	0.7	0.7	0.7	"
Robe C	115cm*	3.1	3.2	3.2	3.2	3.2	3.5	3.5	3.7	3.7	m
	150cm*	2.2	2.3	2.4	2.7	2.7	2.7	2.7	2.7	2.9	"
MESURES DES VÊTEMENTS FINI (Motif et aisance de port compris)											
A,B,C Poitrine	86	89	91	95	100	105	110	116	121	126	cm
A,B,C Taille	69	71	74	77	83	88	93	98	103	108	"
Longueur finie – dos, votre nuque à l'ourlet											
Robe A,B	82	83	83	84	84	85	86	86	87	88	cm
Robe C	107	108	109	109	110	110	111	112	112	113	"



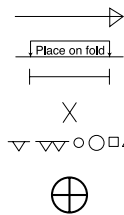


10 PATTERN PIECES



- 1 Bodice Front-A,B,C
- 2 Bodice Back-A,B,C
- 3 Placket-A,B,C
- 4 Collar-A,B,C
- 5 Collar Band-A,B,C
- 6 Sleeve-A
- 7 Continuous Lap-A
- 8 Cuff-A
- 9 Skirt Front and Back-A,B,C
- 10 Skirt Side Front and Side Back-A,B,C

PATTERN MARKINGS



GRAINLINE: Place on straight grain of fabric, parallel to selvage or fold.

FOLDLINE: Place line on fold of fabric.

BUTTONHOLE MARKING: Indicates exact length and placement of buttonholes.

BUTTON MARKING: Indicates button placement.

NOTCHES AND SYMBOLS: For matching seams and construction details.

Indicates the Bustline, Waistline, Hip and/or Biceps. Measurements refer to circumference of Finished Garment (Body Measurement + Wearing Ease + Design Ease). Adjust pattern if necessary. The measurement excludes pleats, tucks, darts and seam allowances.

SEAM ALLOWANCE: 5/8" (1.5cm) included unless otherwise indicated, but not printed on tissue.

ADJUST IF NECESSARY

Lengthen or Shorten at adjustment lines (==) or where indicated on pattern. If substantial length is added, you may need to purchase additional fabric.

TO SHORTEN: Crease along adjustment line. Make a fold half the amount needed. Tape in place.

TO LENGTHEN: Slash between adjustment lines. Spread amount as needed, keeping edges parallel. Tape over paper.

When Alteration lines are not on tissue, lengthen or shorten at lower edge.

CUTTING AND MARKING

SHRINK FABRIC if not labeled pre-shrunk. Press.

CIRCLE LAYOUT for View, Size, Fabric Width.

Use **WITH NAP** layout for fabrics with one-way designs, nap, pile or surface shading. Because most knits have surface shading, a with nap layout is used.

For **DOUBLE THICKNESS (WITH FOLD)** - fold fabric with right sides together.

*** DOUBLE THICKNESS (WITHOUT FOLD)** - For fabrics with nap, fold fabric crosswise, right sides together. Mark as shown. Cut along crosswise fold of fabric (A). Turn upper layer 180° so arrows go in same direction and place over lower layer, right sides together (B).

For **SINGLE THICKNESS** - place fabric right side up. (For Fur Pile fabrics, place pile side down.)

★ Cut other pieces first, allowing enough fabric to cut this piece. Open fabric. For "Cut 1" pieces, cut piece once on single layer of fabric with piece face up on right side of fabric.

Pattern may have cutting lines for several sizes. Select the proper cutting line or pattern pieces for your size.

Before **CUTTING** place all pieces on fabric according to layout. Pin. (Layouts show approximate position of pattern pieces; position may vary according to your pattern size.) Cut **ACCURATELY**, cutting notches outward.

Before removing pattern, **TRANSFER MARKINGS** and lines of construction to Wrong Side of fabric, using the Pin and Chalk Pencil method or Tracing Paper and Dressmaker Wheel. Markings needed on right side of fabric should be thread traced.

NOTE: Broken-line boxes (a! b! c!) in layouts represent pieces cut by measurements provided.

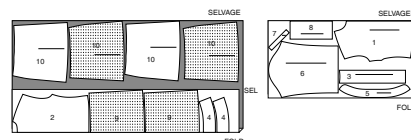
CUTTING LAYOUTS

RIGHT SIDE OF PATTERN	WRONG SIDE OF PATTERN	RIGHT SIDE OF FABRIC	WRONG SIDE OF FABRIC

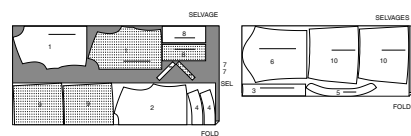
DRESS A

USE PIECES 1 2 3 4 5 6 7 8 9 10

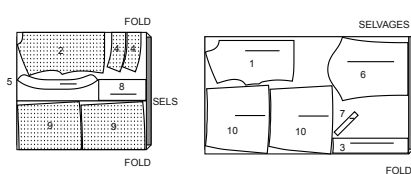
45" (115CM)
WITH NAP
SIZES 6 8 10 12 14 16



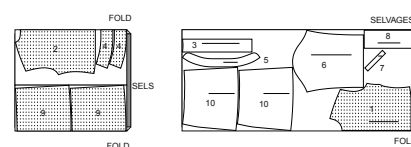
45" (115CM)
WITH NAP
SIZES 18 20 22 24



60" (150CM)
WITH NAP
SIZES 6 8 10 12 14



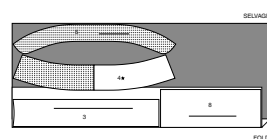
60" (150CM)
WITH NAP
SIZES 16 18 20 22 24



INTERFACING A

USE PIECES 3 4 5 8

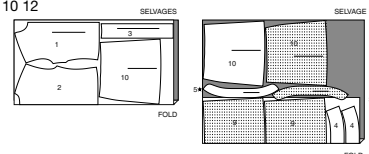
20" (51CM)
ALL SIZES



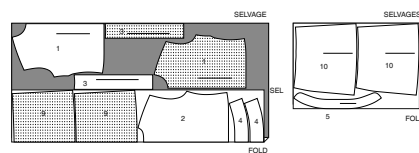
DRESS B

USE PIECES 1 2 3 4 5 9 10

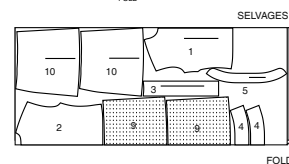
45" (115CM)
WITH NAP
SIZES 6 8 10 12



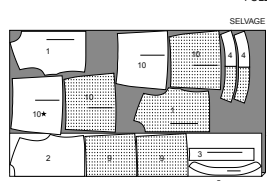
45" (115CM)
WITH NAP
SIZES 14 16 18 20 22 24



60" (150CM)
WITH NAP
SIZES 6 8 10 12 14



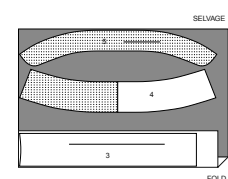
60" (150CM)
WITH NAP
SIZES 16 18 20 22 24



INTERFACING B,C

USE PIECES 3 4 5

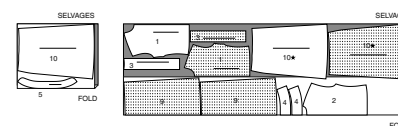
20" (51CM)
ALL SIZES



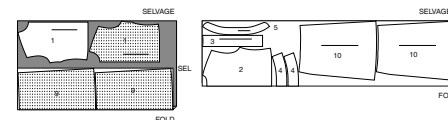
DRESS C

USE PIECES 1 2 3 4 5 9 10

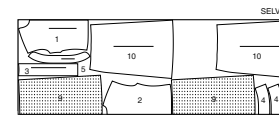
45" (115CM)
WITH NAP
SIZES 6 8 10 12 14



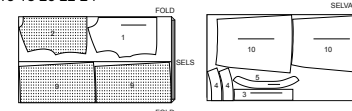
45" (115CM)
WITH NAP
SIZES 16 18 20 22 24



60" (150CM)
WITH NAP
SIZES 6 8 10

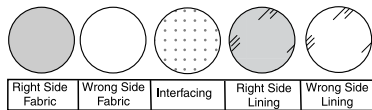


60" (150CM)
WITH NAP
SIZES 12 14 16 18 20 22 24



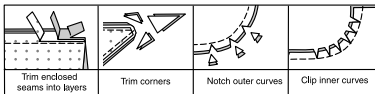
SEWING INFORMATION

FABRIC KEY



SEAM ALLOWANCES

Use 5/8" (1.5cm) seam allowances unless otherwise indicated.



PIN AND FIT

Pin or baste seams, **RIGHT SIDE TOGETHER**, matching notches. Fit garment before stitching major seams.

PRESS

Press seam allowances flat; then open unless otherwise stated. Clip where necessary so they lie flat.

GLOSSARY

Sewing methods in **BOLD TYPE** have Sewing Tutorial Video available. Scan **QR CODE** to watch videos:

FLAT DART – See **Darts**: “sewing flat dart” video.

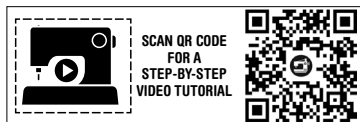
SLIPSTITCH – See **Hand Stitching**: “how to slip stitch” video.

STAYSTITCH – See **Machine Stitches**: “how to do stay stitching” video.

STITCH IN THE DITCH – See **Machine Stitches**: “how to stitch in the ditch” video.

TRIM SEAM – See **Seams**: “how to trim, clip and layer seams” video.

UNDERSTITCH – See **Machine Stitches**: “how to understitch” video.



PATTERN PIECES WILL BE IDENTIFIED BY NUMBERS THE FIRST TIME THEY ARE USED.

STITCH 5/8" (1.5CM) SEAMS WITH RIGHT SIDES TOGETHER UNLESS OTHERWISE STATED

DRESS A, B, C

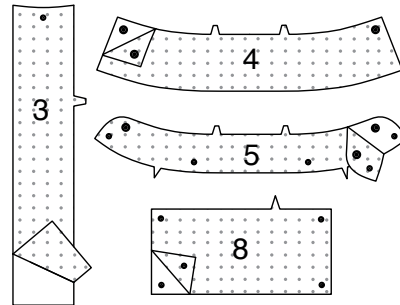
NOTE: VIEW A will be illustrated unless otherwise noted.

NOTE: FOR VIEW B, C – Trim 1/4" (6mm) from armhole edge of BODICE FRONT (1) and BODICE BACK (2) before stitching seams.

INTERFACING

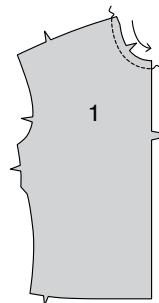
1. Pin interfacing to **WRONG** side of PLACKET (3), COLLAR (4), COLLAR BAND (5), and for **VIEW A** CUFF (8) sections.

Fuse in place following manufacturer's directions.



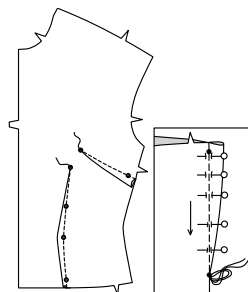
BODICE FRONT AND PLACKET

2. To **STAYSTITCH** neck edge of BODICE FRONT (1), stitch 1/2" (1.3cm) from cut edge in direction of arrows. This stitching stays in permanently to prevent stretching on curved edges. (Shown only in the first illustration.)

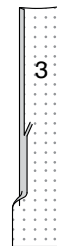


3. To make **FLAT DART** and dart seam, with **RIGHT** sides together, bring broken lines together carefully matching small dots. On **INSIDE**, place pins at **RIGHT** angles to the broken lines. Stitch the dart from outer edge to the point.

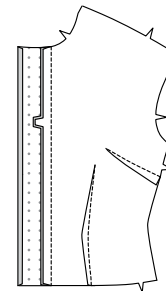
Press the dart and dart seam flat along the stitching to “blend” the stitches, then press dart down and dart seam toward center.



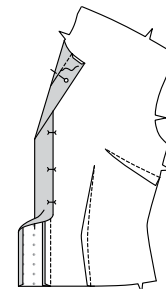
4. Press under long, unnotched edge of PLACKET (3) 1/2" (1.3cm). Trim to 1/4" (6mm).



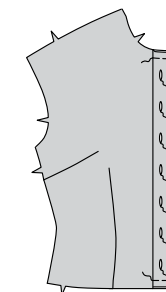
5. With **RIGHT** sides together and raw edges even, pin placket to bodice front, matching notches. Stitch. **TRIM SEAM**. Press seam toward placket, pressing placket out.



6. Fold placket to **INSIDE** along foldline; press. On **INSIDE**, pin pressed edge of placket over seam, placing pins on **OUTSIDE**. On **OUTSIDE**, **STITCH IN THE DITCH** of the seam, catching in inner pressed edge of placket on the **INSIDE**.



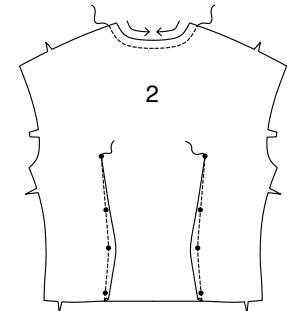
7. Baste upper and lower edges of placket along seamlines. Make buttonholes on **RIGHT** bodice at markings.



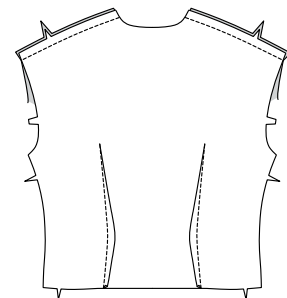
BODICE BACK

8. To **STAYSTITCH** neck edge of BODICE BACK (2), stitch 1/2" (1.3cm) from cut edge in direction of arrows. This stitching stays in permanently to prevent stretching on curved edges. (Shown only in the first illustration.)

Make dart seam in the same manner as before. Press toward center.



9. Stitch bodice front to bodice back along shoulder edges.

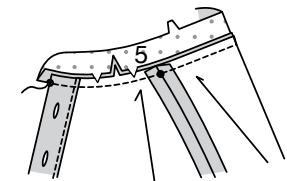


COLLAR BAND AND COLLAR

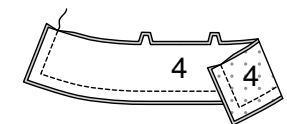
10. Clip neck edge of bodice to staystitching.

With **RIGHT** sides together, pin single notched edge of COLLAR BAND (5) to neck edge, matching centers back and small dots, placing inner small dots at shoulder seams. (Collar band extends 5/8" (1.5cm) beyond front opening edges.) Stitch neck edge. **TRIM SEAM**.

Press band out; press seam toward band.

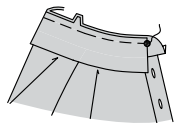


11. With **RIGHT** sides together and raw edges even, stitch facing to COLLAR (4), leaving notched edges open. **TRIM SEAM**.



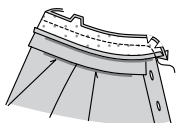
12. Turn collar; press. Baste raw edges together.

With RIGHT sides together and raw edges even, pin collar (facing side) to collar band, matching centers back and double notches, placing ends at large dots. Machine-baste.



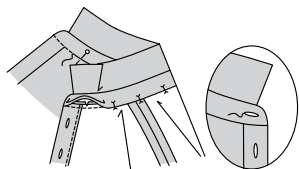
13. Press under a generous 1/2" (1.3cm) on single notched edge of collar band facing; trim to 1/4" (6mm).

With RIGHT sides together, pin collar band facing to collar band (over collar), matching centers. Stitch front and double notched edge. **TRIM SEAM.**



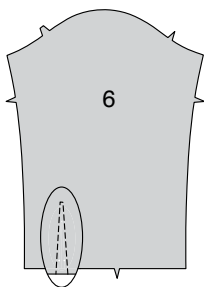
14. Turn band facing to INSIDE; press. Pin pressed edge of facing over seam, placing pins on OUTSIDE. On OUTSIDE, **STITCH IN THE DITCH** of the seam, catching in pressed edge of facing on INSIDE.

Make buttonhole on band at marking.

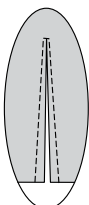


CONTINUE AS FOLLOWS FOR VIEW A

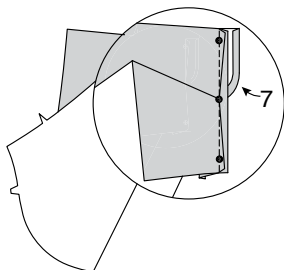
15. To make slash opening at lower edge of SLEEVE (6), stitch along stitching lines. Pivot and take one small stitch across the point.



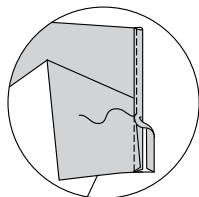
16. Slash between stitching, being careful not to slash through the stitch at the point.



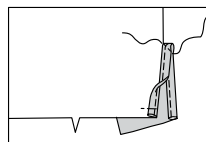
17. Press under 1/4" (6mm) on unmarked edge of CONTINUOUS LAP (7). Spread slashed edges of sleeve apart, forming a straight line. Pin RIGHT side of continuous lap to WRONG side of slashed edges, matching stitching lines and small dots. (Sleeve seam allowance will be 1/4" (6mm) at the ends, but taper close to nothing at the center dot.) Stitch along stitching line. Press seam toward lap.



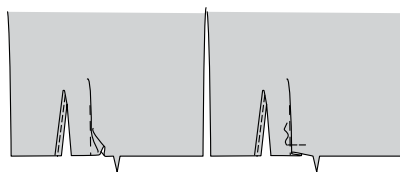
18. Pin pressed edge of lap to OUTSIDE slightly over stitching. Stitch close to pressed edge.



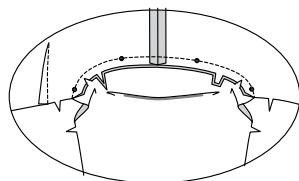
19. Turn front edge of lap to INSIDE; baste in place across lower edge. To keep lap in place, stitch diagonally across upper edge of lap, as shown.



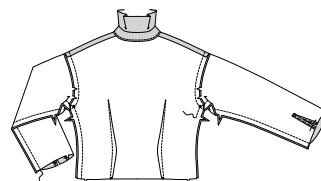
20. To make soft pleat, on OUTSIDE, fold along solid line. Bring fold to broken line; pin. Baste across raw edge.



21. With RIGHT sides together, pin sleeve to armhole edge with center small dot at shoulder seam, matching notches and remaining small dots. Stitch. Clip curves. Press seam toward sleeve.

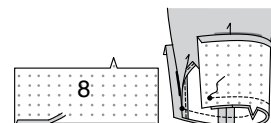


22. Pin underarm and side edges together, matching armhole seams and notches. Stitch entire RIGHT underarm and side seam; stitch LEFT underarm and side seam to the notch, back-stitching at notch to reinforce the seam.

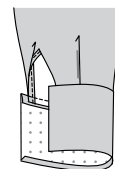


23. Press under a generous 1/2" (1.3cm) on unnotched edge of CUFF (8). Trim to 1/4" (6mm).

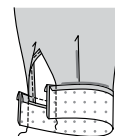
With RIGHT sides together, pin sleeve to cuff, placing opening edges at small dots. Baste. Stitch. **TRIM SEAM.**



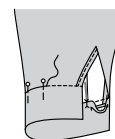
24. Press seam toward cuff, pressing cuff out.



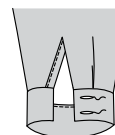
25. Fold cuff along foldline with RIGHT sides together. Stitch ends. **TRIM SEAM(s).**



26. Turn cuff; press. On INSIDE, pin pressed edge of cuff over seam, placing pins on OUTSIDE. On OUTSIDE, **STITCH IN THE DITCH** of the seam, catching in pressed edge of cuff facing on the INSIDE.

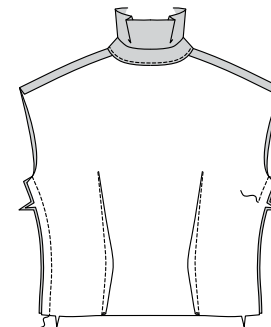


27. Make buttonholes in cuff at markings.



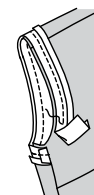
CONTINUE AS FOLLOWS FOR VIEW B, C

28. Pin bodice front to bodice back at side edges. Stitch RIGHT side edges; stitch LEFT side edges from armhole edge to the notch, back-stitching at notch to reinforce the seam.

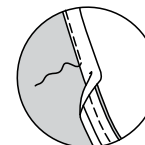


29. Open out one edge of single fold bias tape.

With RIGHT sides together, pin tape to armhole edge with raw edges even, turning under and lapping one end at side seam. Stitch in 3/8" (1cm) seam. **TRIM SEAM.**



30. To **UNDERSTITCH** the tape, press tape and seam away from garment, stitching through tape and seam allowances close to seam.

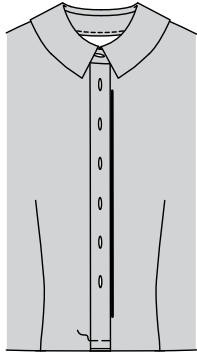


31. Turn tape to INSIDE; press. Baste close to inner edge of tape. On OUTSIDE, topstitch as basted.



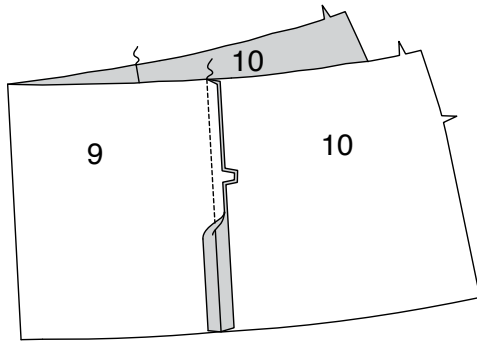
CONTINUE AS FOLLOWS FOR ALL VIEWS

32. On OUTSIDE, lap RIGHT bodice front over LEFT bodice front, matching centers. Baste along lower seam line.

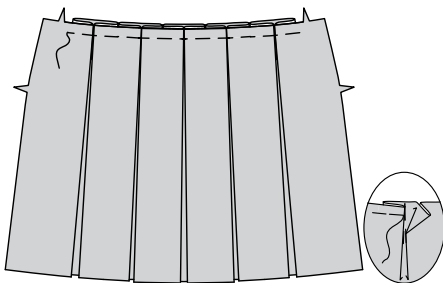


SKIRT

33. To make skirt front, pin SKIRT SIDE FRONT (10) sections to SKIRT FRONT (9) along side front edges, matching notches. Stitch.

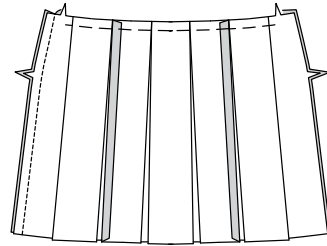


34. To make pleats, on OUTSIDE, fold along solid lines. Bring folds to broken lines; pin. Baste across raw edge.

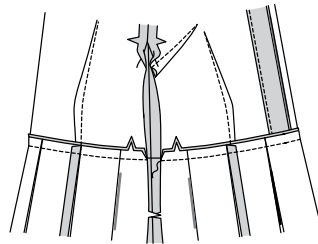


35. Make skirt back and pleat in the same manner, using SKIRT SIDE BACK (10) and SKIRT BACK (9) sections.

Stitch RIGHT side edges of skirt together.



36. With RIGHT sides together and raw edges even, pin upper edge of skirt to lower edge of bodice, matching centers, notches, and seams. Stitch. Press seam toward bodice.

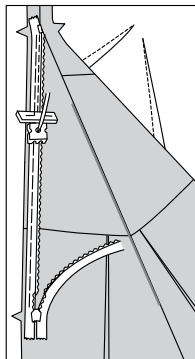


ZIPPER

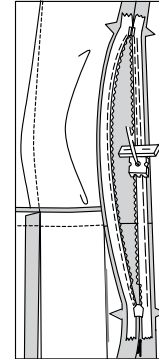
NOTE: The zipper may be longer than the zipper opening and will be adjusted after it is inserted.

NOTE: Stitch the invisible zipper using an invisible zipper foot. Before you begin, be sure to line up your needle with the center of the invisible zipper foot or you may break your needle. When the coils are to the LEFT of the raw edge use the LEFT groove and when the coils are to the RIGHT of the raw edge use the RIGHT groove.

37. Open the zipper and press the tape flat on the WRONG side, unrolling the coils. Do not press the coils. (Use a low iron setting.) On OUTSIDE, pin RIGHT side of the zipper face down on the RIGHT side of the zipper opening. Have the coil along the seam line, the tape within the seam allowance and the top stop at upper notch, as shown. Hand-baste along center of the tape. Position zipper foot at the top stop of the zipper with RIGHT groove of the foot over coil. Stitch along tape to lower notch. Back-stitch to reinforce.



38. Pin remaining half of zipper to the LEFT side of the zipper opening in same manner. Make sure that the upper and lower edges of the garment are even and that side edges and notches match. Hand-baste along center of tape. Position zipper foot at top stop of zipper tape with LEFT groove over coil. Stitch along tape to the notch. Back-stitch to reinforce.

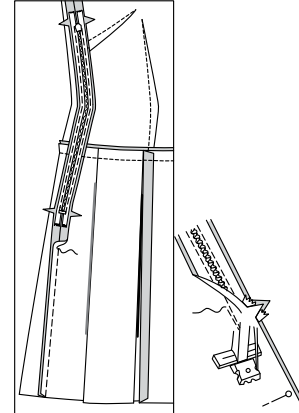


39. Close zipper and check that it is invisible from the OUTSIDE. Pull the free ends of the zipper tape away from the seam allowance. Pin LEFT side seam together below zipper.

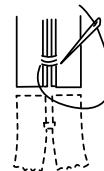
Position zipper foot all the way to the LEFT so the needle goes down outside the foot.

Start stitching seam 1/4" (6mm) above lowest stitch and slightly to the LEFT. Stitch seam for about 3" (7.5cm).

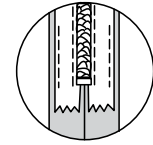
Stitch remainder of seam using your regular presser foot.



40. If the zipper is longer than the opening, using a strong thread, hand-sew a few small stitches across ends of coils at end of opening. Trim away lower end of zipper tape to within 5/8" (1.5cm) of hand-stitches.



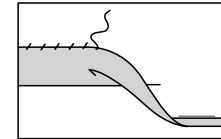
41. Open out each seam allowance at end of zipper and stitch tape to seam allowance.



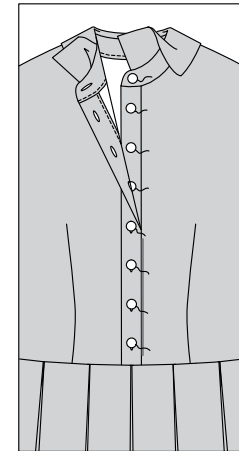
FINISHING

42. Press up 1-1/4" (3.2cm) hem allowance. Turn under raw edge 1/4" (6mm).

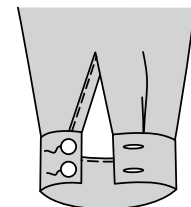
SLIPSTITCH hem in place.



43. With centers of LEFT and RIGHT placket matching, sew buttons to LEFT placket under buttonholes. Sew button to collar band at small dot.



44. FOR VIEW A – Sew buttons to cuff at small dots.





Congrats!

You've completed your sewing adventure

SHARE YOUR LOOK



Post your pattern and tag us using [#simplicitypatterns](#)
[@simplicity_creative_group](#)
[@simplicitymccallsuk](#)
[@simplicitymccallsaustralia](#)
for a chance to be featured on our social media.

Look for more PDF patterns at [simplicity.com](#) or for customers outside the U.S. and Canada visit [sewdirect.com](#) and [sewdirect.com.au](#)

Have a question or need help with your sewing project contact us:
[Simplicity.com](#) [Sewdirect.com](#) [Sewdirect.com.au](#)

McCall's®
by **design**_{group}

McCall's ©2025 a division of IG Design Group Americas Inc. • Atlanta, GA 30342 USA [www.thedesigngroup.com](#) • All Rights Reserved. [www.mccall.com](#) • Made in the U.S.A. Fabriqué aux États-Unis.
To be used for individual private home use only and not for commercial or manufacturing purposes. • A usage privé seulement et non à des fins commerciales ou de production en série. • Para uso privado solamente, no se puede utilizar con propósitos de comercialización o de producción en serie.