

McCall's

M8575



Designed and printed in USA

This sewing pattern includes multiple view options with simple instructions. Show your make!
Ce patron de couture comprend plusieurs modèles avec des instructions faciles! Montrez votre réalisation!

Average

MISSES' DRESS WITH SLEEVE AND LENGTH VARIATIONS

Suggested Fabrics: Cotton Blends, Gingham, Poplin, Sateen. **Lining:** Lawn, Lining Fabrics.

Notions: A,B,C: One 16" (40cm) invisible zipper, ¾ yd. (0.6m) of ¼" (6mm) ribbon. **Also for A,B:** 1¾ yds. (1.6m) of ¾" (1cm) elastic, 1¼ yds. (1.1m) of ¾" (2cm) elastic, one pkg. of ½" (1.3cm) single fold bias tape.

Sizes	8	10	12	14	16	18	20	22	24	26
European	34	36	38	40	42	44	46	48	50	52

BODY MEASUREMENTS: Select pattern size based on body measurements

Bust	31½	32½	34	36	38	40	42	44	46	48	Ins.
Waist	24	25	26½	28	30	32	34	37	39	41	"
Hip-9" below waist	33½	34½	36	38	40	42	44	46	48	50	"
Back-neck to waist	15¾	16	16¼	16½	16¾	17	17¼	17½	17¾	18	"

Lining A,B,C 45*** - ½ yd.

Dress A	45**	3½	3½	3¼	3½	3½	3½	3½	3½	3¾	Yds.
	60**	3½	3½	3½	3½	3½	3¼	3¼	3½	3½	"
Dress B	45**	4½	4½	4½	5½	5¼	5¼	5½	5½	5½	Yds.
	60**	4½	4½	4½	4½	4½	4½	4½	5	5	"
Dress C	45**	4½	4½	4½	4¾	4¾	4½	4½	4½	4½	Yds.
	60**	3¾	3¾	3¾	3¾	3¾	3¾	3¾	4	4	"

FINISHED GARMENT MEASUREMENTS (Includes Design and Wearing Ease)

Finished back length from base of neck

Dress A	31¾	32	32¼	32½	32¾	33	33¼	33½	33¾	34	Ins.
Dress B,C	41¾	42	42¼	42½	42¾	43	43¼	43½	43¾	44	"

*with nap **without nap

Average

ROBE AVEC VARIATIONS DE MANCHE ET DE LONGUEUR POUR JEUNES FEMMES

Tissus Conseillés: Cotonnades, Vichy, Popeline, Satinette. **Doublure:** Linon, Tissus à doublure.

Merçerie: A,B,C: 1 fermeture à glissière invisible de 40cm, 0.6m de ruban de 6mm. **Aussi pour A,B:** 1.6m d'élastique de 1cm, 1.1m d'élastique de 2cm, 1 paquet de ruban de biais simple de 1.3cm.

Tailles	8	10	12	14	16	18	20	22	24	26
Françaises	36	38	40	42	44	46	48	50	52	54
Européen	34	36	38	40	42	44	46	48	50	52

MESURES DU CORPS: Choisissez la taille du patron basée sur les mesures du corps

Poitrine	80	83	87	92	97	102	107	112	117	122	cm
Taille	61	64	67	71	76	81	87	94	99	104	"
Hanches (23cm au-dessous de la taille)	85	88	92	97	102	107	112	117	122	127	cm
Dos du cou à la taille	40	40.5	41.5	42	42.5	43	44	44.5	45	46	"

Doublure A,B,C 115cm** - 0.6m

Robe A	115cm*	2.9	2.9	2.9	3.2	3.2	3.3	3.3	3.3	3.4	m
	150cm*	2.7	2.9	2.9	2.9	2.9	2.9	3.0	3.0	3.2	"
Robe B	115cm*	4.5	4.5	4.5	4.7	4.8	4.8	4.8	4.9	4.9	m
	150cm*	4.1	4.1	4.1	4.1	4.1	4.1	4.2	4.2	4.6	"
Robe C	115cm*	3.8	3.8	3.8	4.0	4.0	4.0	4.0	4.1	4.1	m
	150cm*	3.4	3.4	3.4	3.4	3.4	3.4	3.4	3.4	3.7	"

MESURES DES VÊTEMENTS FINI (Motif et aisance de port compris)

Longueur finie – dos, votre nuque à l'ourlet

Robe A	81	81	82	83	83	84	84	85	86	86	cm
Robe B,C	102	107	107	108	109	109	110	110	111	112	"

*avec sens **sans sens



A



A



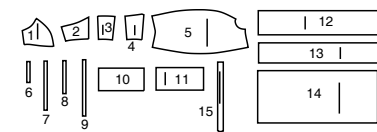
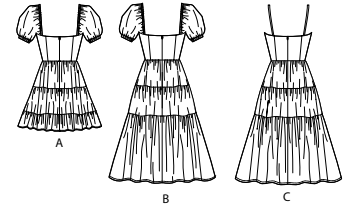
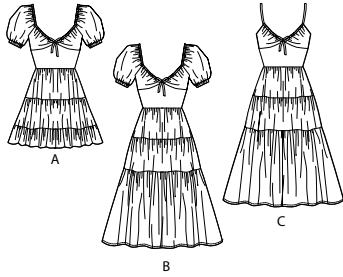
B



B



C



- 1 Bodice Upper Front-A,B,C
- 2 Bodice Lower Front-A,B,C
- 3 Bodice Back-A,B,C
- 4 Bodice Side Back-A,B,C
- 5 Sleeve-A,B
- 6 Elastic Guide for Front-A,B,C
- 7 Elastic Guide for Shoulder-A,B
- 8 Elastic Guide for Sleeve-A,B
- 9 Guide for Bow-A,B,C
- 10 Skirt Upper Front-A,B,C
- 11 Skirt Upper Back-A,B,C
- 12 Middle Skirt-A,B,C
- 13 Lower Skirt-A
- 14 Lower Skirt-B,C
- 15 Shoulder Strap-C

PATTERN MARKINGS
GRAINLINE: Place on straight grain of fabric, parallel to selvage or fold.
FOLDLINE: Place line on fold of fabric.
BUTTONHOLE MARKING: Indicates exact length and placement of buttonholes.
BUTTON MARKING: Indicates button placement.
NOTCHES AND SYMBOLS: For matching seams and construction details.
 Indicates the Bustline, Waistline, Hip and/or Biceps. Measurements refer to circumference of Finished Garment (Body Measurement + Wearing Ease + Design Ease). Adjust pattern if necessary. The measurement excludes pleats, tucks, darts and seam allowances.
SEAM ALLOWANCE: 5/8" (1.5cm) included unless otherwise indicated, but not printed on tissue.

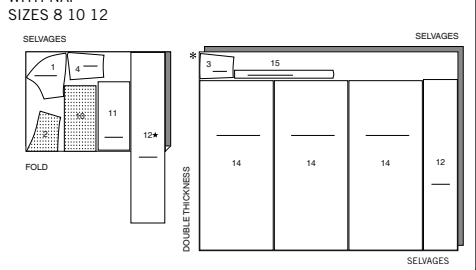
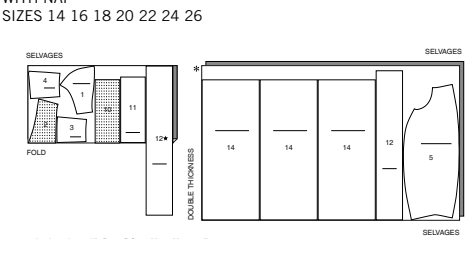
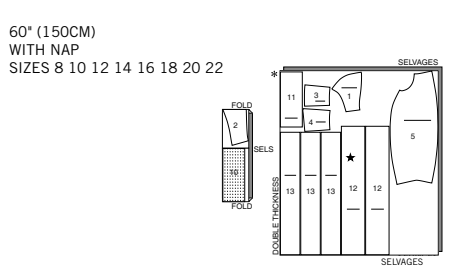
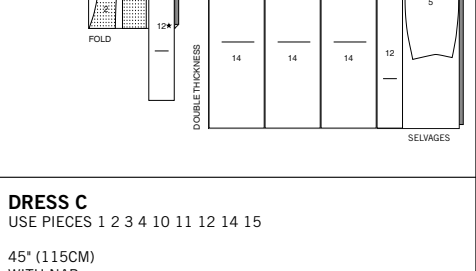
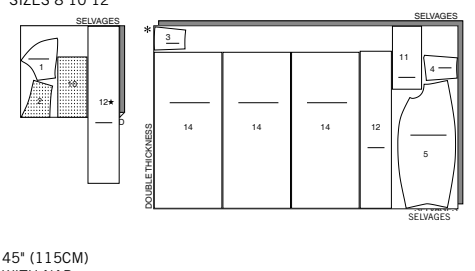
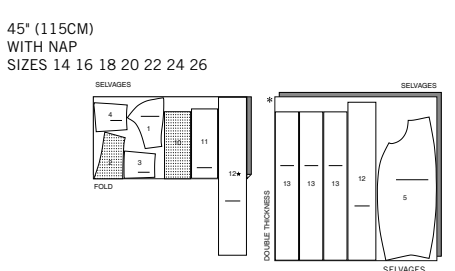
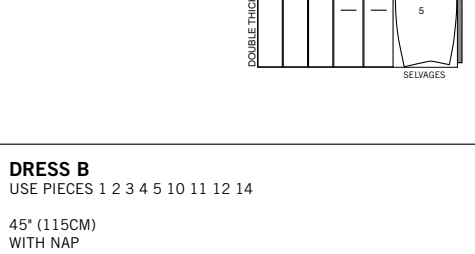
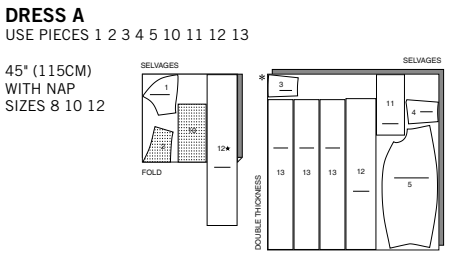
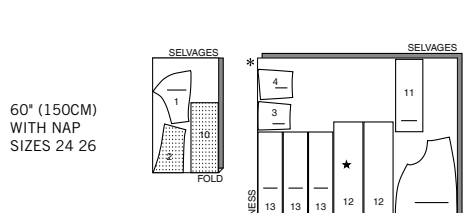
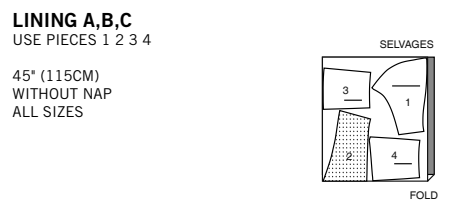
ADJUST IF NECESSARY
 Lengthen or Shorten at adjustment lines (==) or where indicated on pattern. If substantial length is added, you may need to purchase additional fabric.
TO SHORTEN: Crease along adjustment line. Make a fold half the amount needed. Tape in place.
TO LENGTHEN: Slash between adjustment lines. Spread amount as needed, keeping edges parallel. Tape over paper.
 When Alteration lines are not on tissue, lengthen or shorten at lower edge.

CUTTING AND MARKING
SHRINK FABRIC if not labeled pre-shrunk. Press.
CIRCLE LAYOUT for View, Size, Fabric Width.
 Use **WITH NAP** layout for fabrics with one-way designs, nap, pile or surface shading. Because most knits have surface shading, a with nap layout is used.
 For **DOUBLE THICKNESS (WITH FOLD)** - fold fabric with right sides together.
 * **DOUBLE THICKNESS (WITHOUT FOLD)** - For fabrics with nap, fold fabric crosswise, right sides together. Mark as shown. Cut along crosswise fold of fabric (A). Turn upper layer 180° so arrows go in same direction and place over lower layer, right sides together (B).
 For **SINGLE THICKNESS** - place fabric right side up. (For Fur Pile fabrics, place pile side down.)

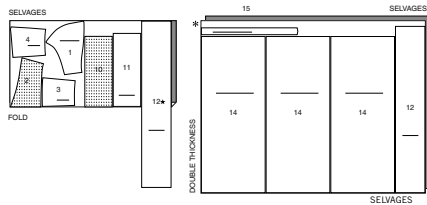
★ Cut other pieces first, allowing enough fabric to cut this piece. Open fabric. For "Cut 1" pieces, cut piece once on single layer of fabric with piece face up on right side of fabric.
 Pattern may have cutting lines for several sizes. Select the proper cutting line or pattern pieces for your size.
 Before **CUTTING** place all pieces on fabric according to layout. Pin. (Layouts show approximate position of pattern pieces; position may vary according to your pattern size.) Cut **ACCURATELY**, cutting notches outward.
 Before removing pattern, **TRANSFER MARKINGS** and lines of construction to Wrong Side of fabric, using the Pin and Chalk Pencil method or Tracing Paper and Dressmaker Wheel. Markings needed on right side of fabric should be thread traced.
NOTE: Broken-line boxes (a| b| c|) in layouts represent pieces cut by measurements provided.

CUTTING LAYOUTS

RIGHT SIDE OF PATTERN	WRONG SIDE OF PATTERN	RIGHT SIDE OF FABRIC	WRONG SIDE OF FABRIC
-----------------------	-----------------------	----------------------	----------------------



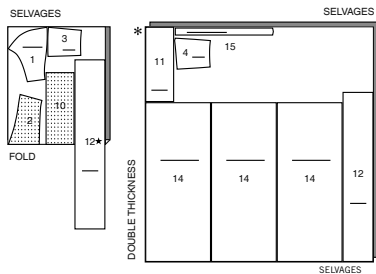
45" (115CM)
WITH NAP
SIZES 14 16 18 20 22 24 26



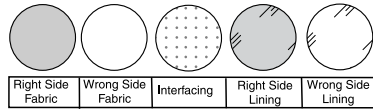
60" (150CM)
WITH NAP
SIZES 8 10 12 14 16 18 20 22



60" (150CM)
WITH NAP
SIZES 24 26

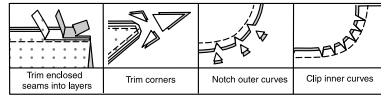


SEWING INFORMATION
FABRIC KEY



SEAM ALLOWANCES

Use 5/8" (1.5cm) seam allowances unless otherwise indicated.



PIN AND FIT

Pin or baste seams, **RIGHT SIDE TOGETHER**, matching notches. Fit garment before stitching major seams.

PRESS

Press seam allowances flat; then open unless otherwise stated. Clip where necessary so they lie flat.

GLOSSARY

Sewing methods in **BOLD TYPE** have Sewing Tutorial Video available. Scan QR CODE to watch videos:

GATHER - See Gathering: "sewing two row gathers" video.

NARROW HEM - See Hems: "sewing narrow hems" video.

REINFORCE - See Machine Stitches: "how to reinforce" video.

SLIPSTITCH - See Hand Stitching: "how to slip stitch" video.

STAYSTITCH - See Machine Stitches: "how to do stay-stitching" video.

TACK - See Hand Stitches: "how to tack" video.

TRIM - See Seams: "How to Sew: Trim, Clip, and Layer Seams" video.

UNDERSTITCH - See Machine Stitches: "how to understitch" video.

SEWING TUTORIALS



Build your skills viewing short, easy-to-follow videos at simplicity.com/sewingtutorials

PATTERN PIECES WILL BE IDENTIFIED BY NUMBERS THE FIRST TIME THEY ARE USED.

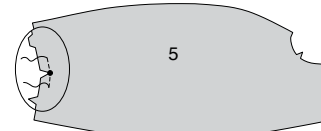
STITCH SEAMS WITH RIGHT SIDES TOGETHER UNLESS OTHERWISE STATED.

DRESS A, B, C

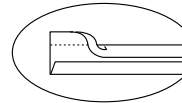
NOTE: The first view mentioned will be shown, unless otherwise indicated.

BODICE AND SLEEVE A, B

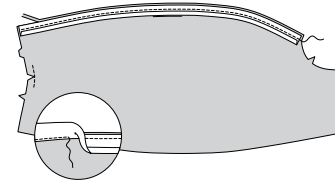
1. REINFORCE back edge of **SLEEVE (5)** through small dot, as shown. Clip to small dot.



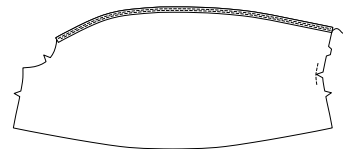
2. Open out one folded edge of 1/2" (1.3cm) wide single fold bias tape. Press lightly.



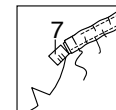
3. With **RIGHT** sides together, pin tape to upper edge of sleeve, placing crease 3/8" (1cm) from raw edge. Stitch along crease. Trim sleeve even with bias tape. **UNDERSTITCH** tape.



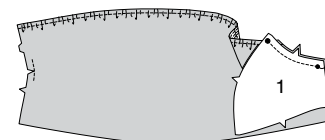
4. Turn tape to **INSIDE** along seam. Press. To form casing, stitch close to inner edge of tape.



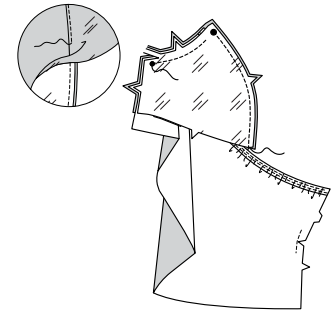
5. Cut two pieces of 3/8" (1cm) wide elastic using **ELASTIC GUIDE FOR SHOULDER (7)**. Insert elastic through casing having raw edges even. Baste ends securely.



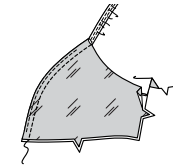
6. Pin sleeve to armhole edge of **BODICE UPPER FRONT (1)**, matching notches and small and large dots. Stitch between large and small dots, catching in elastic at upper edge of sleeve.



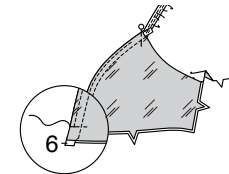
7. With **RIGHT** sides together, pin bodice upper front **LINING** to bodice upper front (over **WRONG** side of sleeve), matching notches and dots. Stitch from small dot at side edge to 1/2" (1.3cm) before large dot. **TRIM.** Stitch front edge of bodice upper front from upper large dot to lower edge, using a 3/8" (1cm) seam, keeping sleeve free. **UNDERSTITCH** front edge of lining as far as possible.



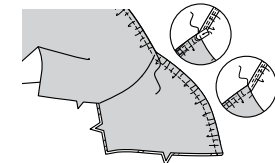
8. Turn lining to **INSIDE**, turning in seam allowance at opening on lining. Press. To form casing, stitch 1/2" (1.3cm) from finished edge of front.



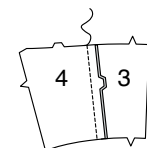
9. Cut two pieces of 3/8" (1cm) wide elastic using **ELASTIC GUIDE FOR FRONT (6)**. Insert elastic through casing on bodice upper front having one end even with lower edge and remaining end extending 5/8" (1.5cm) beyond armhole seam. Baste lower end securely.



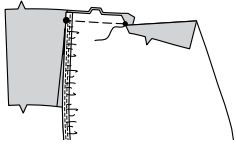
10. On **OUTSIDE**, stitch in the groove of the armhole seam across elastic to secure, keeping the opening in lining free. Tuck end of elastic into casing and **SLIPSTITCH** opening closed.



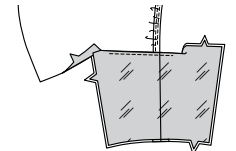
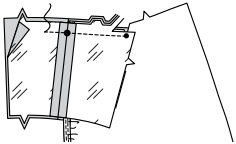
11. Stitch **BODICE SIDE BACK (4)** to **BODICE BACK (3)** at side back edges, matching double notches. Stitch bodice side back **LINING** to bodice back **LINING** in same manner.



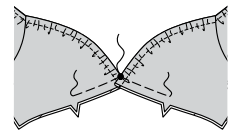
12. Pin upper edge of bodice side back to back edge of sleeve matching notches, and small dot on side back to clip on sleeve. Place side back seam at large dot on upper edge of sleeve. Baste between large and small dots.



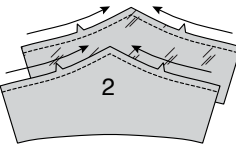
13. Pin bodice back and side back LINING to bodice back, RIGHT sides together (over WRONG side of sleeve), matching notches, dots, and seams. Stitch back armhole edge and upper edge of back from small dot on side back to within 3"(7.5cm) from back edge. **TRIM. UNDERSTITCH** back as far as possible, but do not stitch open portion of back.



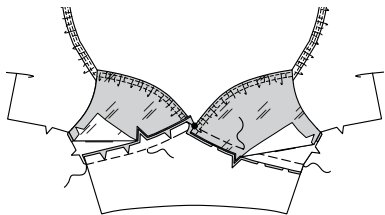
14. Baste lower edges of bodice upper front and lining together from large dot to notch. **TACK** bodice upper fronts together at large dot.



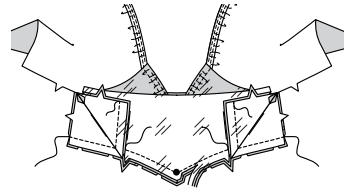
15. **STAYSTITCH** upper edge of BODICE LOWER FRONT (2) and bodice lower front LINING.



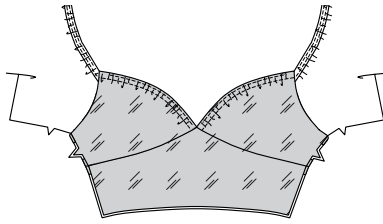
16. On OUTSIDE, pin bodice lower front to lower edge of bodice upper front and lining, matching notches and large dots, clipping lower front to staystitching, as needed. Baste through all layers between single notches. Baste remainder of seam keeping lining free.



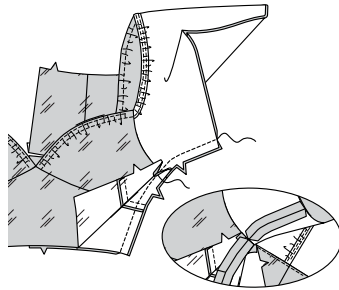
17. Pin bodice lower front lining to lining side of bodice upper front, matching notches and large dots. Stitch through all layers between notches. Stitch fabric layers together from side edge to notch and lining layers together from side edge to notch. **TRIM.** Press seam down.



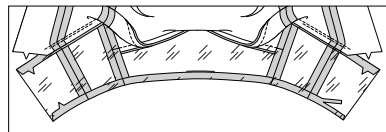
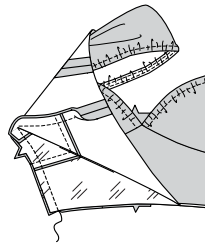
18. Turn bodice lower front and lining down. Press.



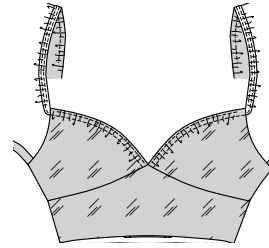
19. Open out lining. Pin bodice front to bodice back at sides, RIGHT sides together. Pin sleeve seam together. Stitch side and underarm seam, breaking stitching at underarm seam, keeping lining free. Press seam open.



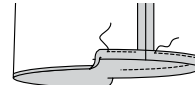
20. Pin bodice front lining to bodice back lining at sides. Stitch to underarm seam, being careful not to catch in sleeve. Turn under 5/8"(1.5cm) on lower edge of lining. Press. Trim pressed seam allowance to 3/8"(1cm).



21. Turn lining down. Press.



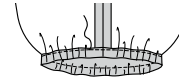
22. Turn 1-1/4"(3.2cm) on lower edge of sleeve to INSIDE, forming casing. Turn under 1/4"(6mm) on raw edge. Press. Stitch close to inner edge of casing, leaving an opening to insert elastic.



23. Cut two pieces of 3/4"(2cm) wide elastic using ELASTIC GUIDE FOR SLEEVE (8). Insert elastic through casing; adjust to fit. Stitch ends of elastic together securely.

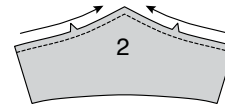


24. Stitch opening in casing, stretching elastic when stitching.

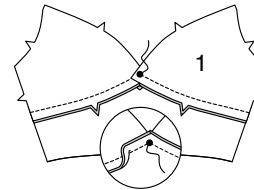


BODICE C

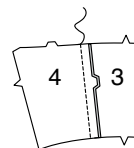
25. **STAYSTITCH** upper edge of BODICE LOWER FRONT (2).



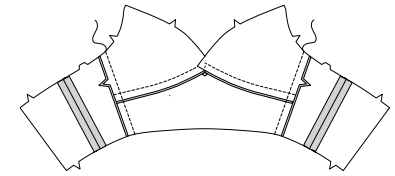
26. Pin BODICE UPPER FRONT (1) to bodice lower front matching notches and large dots. Stitch to large dot. Press seams toward bodice lower front.



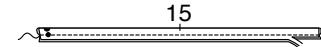
27. Stitch BODICE SIDE BACK (4) to BODICE BACK (3) at sides back edges, matching double notches.



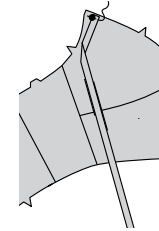
28. Stitch bodice front to bodice back at sides.



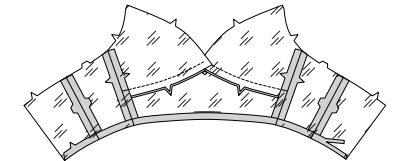
29. Fold SHOULDER STRAP (15) along foldline, RIGHT sides together, having raw edges even. Stitch long edge in a 3/8"(1cm) seam. **TRIM.**



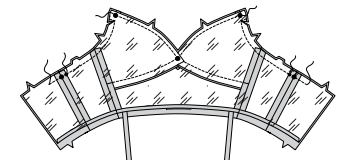
30. Turn RIGHT side out. Press. Pin front end of strap to bodice upper front matching large dots. Stitch across strap.



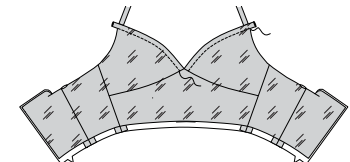
31. Stitch seams of bodice LINING same as bodice. Press under 5/8"(1.5cm) on lower edge of lining. Trim pressed seam allowance to 3/8"(1cm).



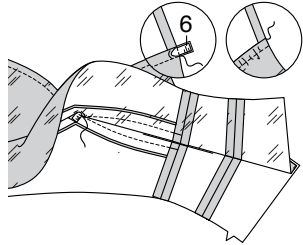
32. With RIGHT sides together, pin lining to bodice, matching seams and symbols. Stitch front edge of bodice between large dots. Starting 1/2"(1.3cm) from large dot on bodice, stitch ACROSS seam allowance and along armhole seamline and upper edge of bodice back to within 3"(7.5cm) from back edge, leaving open between large and small dots on bodice side back. Clip diagonally to stitching at upper edge of armhole, as shown. **TRIM.**



33. Turn lining to INSIDE, turning strap out. Press. To form casing, stitch bodice upper front 1/2"(1.3cm) from finished edge of front.

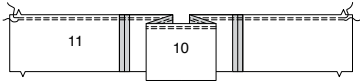


34. Cut two pieces of 3/8" (1cm) wide elastic using GUIDE FOR FRONT (6). Insert elastic through casing on bodice upper front, lifting up lower front and lining at lower edge. Extend ends of elastic 5/8" (1.5cm) beyond armhole and lower front seams. Baste. Stitch across ends of elastic at armhole and along previous stitching at lower front seam, keeping lining free. At armhole edge, tuck seam allowances and end of elastic into casing at opening and **SLIPSTITCH** opening closed.

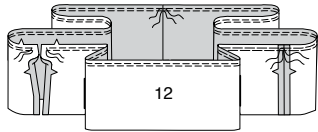


SKIRT

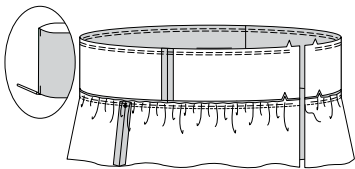
35. Stitch **SKIRT UPPER FRONT** (10) and **SKIRT UPPER BACK** (11) together at sides. **GATHER** upper edge of upper skirt between notches.



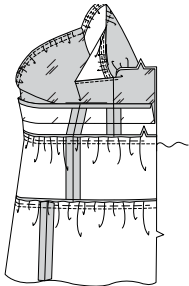
36. Stitch ends of **MIDDLE SKIRT** (12) **RIGHT** sides together, leaving one end free. Open end will be center back. **GATHER** upper edge of middle skirt, breaking ends at seams.



37. Fold middle skirt in half matching seams and back edges and mark center front at fold on upper and lower edges. Pin upper edge of middle skirt to lower edge of upper skirt, matching center fronts, seams to small dots and notches at back edges. Adjust gathers. Stitch. Turn seam toward upper skirt. Press.



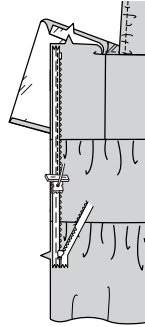
38. Pin upper skirt to lower edge of bodice matching center fronts, notches and seams, having back edges even. Adjust gathers. Stitch. Turn seam toward bodice. Press.



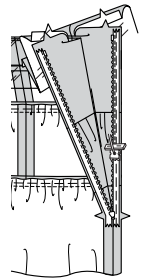
INVISIBLE ZIPPER

NOTE: Stitch the invisible zipper using an invisible zipper foot. If the zipper is longer than the zipper opening, adjust after the zipper is inserted. For a How to video, see **ZIPPER:** "sewing an invisible zipper."

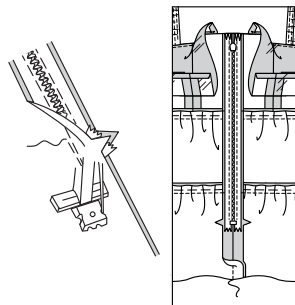
39. Open the zipper and press the tape using a cool iron. On **OUTSIDE**, pin **RIGHT** side of the zipper face down on the **RIGHT** side of the zipper opening. Have the coil along the seam line, the tape within the seam allowance and the top stop 3/4" (2cm) below upper edge, as shown. Hand-baste along center of the tape. Position zipper foot at the top of the zipper with **RIGHT** groove of the foot over coil. Stitch along tape to the notch. Back-stitch to reinforce.



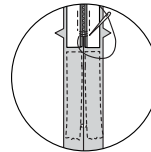
40. Pin the remaining half of the zipper to the **LEFT** side of the zipper opening in same manner. Make sure the upper and lower edges of the garment are even. Hand-baste along the center of the tape. Position zipper foot at the top of the zipper with **LEFT** groove over the coil. Stitch along tape to the notch. Back-stitch to reinforce.



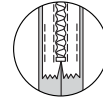
41. Close zipper and check that it is invisible from the **OUTSIDE**. Pull the free ends of the zipper tape away from the seam allowance. Pin remaining center back seam together below zipper. Position zipper foot all the way to the **LEFT** so the needle goes down through the outer notch of the foot. Start stitching seam 1/4" (6mm) above lowest stitch and slightly to the **LEFT**. Stitch seam for about 3" (7.5cm). Stitch remainder of seam using your regular presser foot.



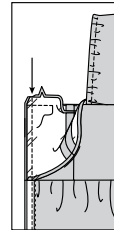
42. If the zipper is longer than the opening, using a strong thread, hand-sew a few small stitches across ends of coils at end of opening. Trim away lower end of zipper tape to within 5/8" (1.5cm) of hand-stitches.



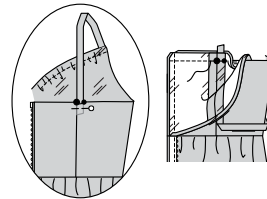
43. If you prefer, open out each seam allowance at end of zipper and stitch tape to seam allowance.



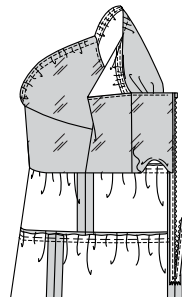
44. Open out back opening edges of dress, rolling the zipper teeth away from the opening edge. Turn back lining to **OUTSIDE**. With **RIGHT** sides together, pin back and back upper edges of dress and lining together. Stitch remaining back upper edges, connecting with previous stitching. **TRIM.** Stitch across lining 1/2" (1.3cm) from back edges, keeping zipper teeth free. Trim corner. Do not trim center back edges.



45. VIEW C: Insert free end of strap through opening in upper edge of back, matching dots. Pin. Try on bodice and adjust straps as needed. (Extra length on straps has been allowed for adjustment.) Open out back lining. Stitch across opening. Trim.

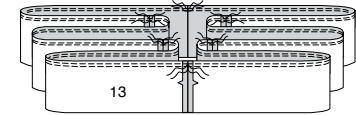


46. UNDERSTITCH armhole and upper edge of back lining as far as possible. Turn lining to **INSIDE**. Press. On **INSIDE**, pin pressed edge of lining over waistline seam. **SLIPSTITCH** in place.

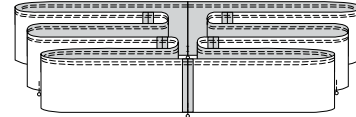


FINISHING

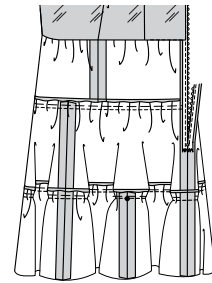
47. Stitch ends of **LOWER SKIRT** (13 or 14). **GATHER** upper edge of lower skirt between seams.



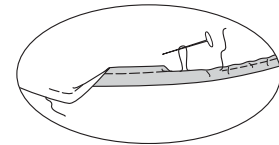
48. Mark one seam as center back. Starting at center back, divide lower skirt into quarters and mark with pins.



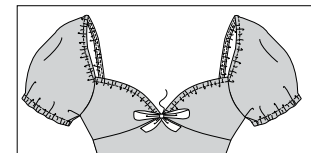
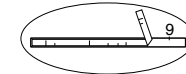
49. Pin upper edge of lower skirt to middle skirt matching center back seams, center front markings and remaining markings to small dots. Adjust gathers. Stitch. Turn seams toward middle skirt.



50. Make a 5/8" (1.5cm) **NARROW HEM** on lower edge of dress.



51. Cut ribbon using **GUIDE FOR BOW** (9). Tie ribbon into a bow and **TACK** to upper edge of bodice at center front. Trim ends of ribbon as desired.





Congrats!

You've completed your sewing adventure

SHARE YOUR LOOK



Post your pattern and tag us using [#simplicitypatterns](#)
[@simplicity_creative_group](#)
[@simplicitymccallsuk](#)
[@simplicitymccallsaustralia](#)
for a chance to be featured on our social media.

Look for more PDF patterns at [simplicity.com](#) or for customers outside the U.S. and Canada visit [sewdirect.com](#) and [sewdirect.com.au](#)

Have a question or need help with your sewing project contact us:
[Simplicity.com](#) [Sewdirect.com](#) [Sewdirect.com.au](#)

McCall's
by **design**_{group}

McCall's ©2025 a division of IG Design Group Americas Inc. • Atlanta, GA 30342 USA [www.thedesigngroup.com](#) • All Rights Reserved. [www.mccall.com](#) • Made in the U.S.A. Fabriqué aux États-Unis.
To be used for individual private home use only and not for commercial or manufacturing purposes. • A usage privé seulement et non à des fins commerciales ou de production en série. • Para uso privado solamente, no se puede utilizar con propósitos de comercialización o de producción en serie.