

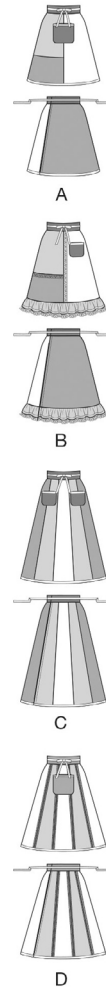
# McCall's

M8572



Designed and printed in USA

| BODY MEASUREMENTS   |             |              |              |               |                |     |
|---------------------|-------------|--------------|--------------|---------------|----------------|-----|
| Sizes               | S<br>(8-10) | M<br>(12-14) | L<br>(16-18) | XL<br>(20-22) | XXL<br>(24-26) |     |
| Bust                | 31½-32½     | 34-36        | 38-40        | 42-44         | 46-48          | in. |
| Waist               | 24-25       | 26½-28       | 30-32        | 34-37         | 39-41½         | "   |
| Hip                 | 33½-34½     | 36-38        | 40-42        | 44-46         | 48-50          | "   |
| Back Waist Length   | 15¾-16      | 16¼-16½      | 16¾-17       | 17¼-17½       | 17¾-18         | "   |
| MESURES NORMALISÉES |             |              |              |               |                |     |
| Tailles             | P           | M            | G            | TG            | TTG            |     |
| Françaises          | 36-38       | 40-42        | 44-46        | 48-50         | 52-54          | cm  |
| Européennes         | 34-36       | 38-40        | 42-44        | 46-48         | 50-52          | "   |
| Poitrine            | 80-83       | 87-92        | 97-102       | 107-112       | 117-122        | "   |
| Taille              | 61-64       | 67-71        | 76-81        | 87-94         | 99-105         | "   |
| Hanches             | 85-88       | 92-97        | 102-107      | 112-117       | 122-127        | "   |
| Longueur Dos        | 40-40.5     | 41.5-42      | 42.5-43      | 44-44.5       | 45-45.5        | "   |



Easy  
Facile

## MISSES' APRONS

**Suggested Fabrics:** Broadcloth, Calico, Chintz, Cotton Types, Gingham, Lightweight Denim, Linen Types. **Interfacing:** Lightweight Fusible.

**Notions:** A, B, C, D: ½" (1.3cm) double fold bias tape: Two pkgs. for A, D, one pkg. for B, three pkgs. for C. **Also for B:** 4 7/8 yds. (4.5m) of 1 3/4" (3cm) flat lace trim. **Also for D:** 7 yds. (6.4m) of ½" - 5/8" (1.3cm - 1.5cm) double-edged flat lace trim.

| Sizes  | S<br>(8-10) | M<br>(12-14) | L<br>(16-18) | XL<br>(20-22) | XXL<br>(24-26) |             |
|--|-------------|--------------|--------------|---------------|----------------|-------------|
| <b>Interfacing A, B, C, D</b>  | 20"         | 1 1/4"       | 1 1/4"       | 1 1/4"        | 1 1/4"         | Yds.        |
| <b>Apron A, B</b>  | 45"         | 3/4"         | 3/4"         | 3/4"          | 1"             | 1 1/2" Yds. |
| <b>Contrast 2 (Right Lower Front, Back)</b>                                    | 45"         | 3/4"         | 3/4"         | 3/4"          | 7/8"           | Yd.         |
| <b>A Contrast 1 (Right Upper Front)</b>  | 45"         | 1/2"         | 5/8"         | 5/8"          | 5/8"           | Yd.         |
| <b>A Contrast 3, D Contrast 2 (Pocket, Waistband)</b>                          | 45"         | 1 1/4"       | 1 1/4"       | 1 1/4"        | 1 1/4"         | Yds.        |
| <b>B Contrast 1 (Right Upper Front, Ruffle) - 45" - 1 yd.</b>                  |             |              |              |               |                |             |
| <b>B, C Contrast 3 (Pocket, Waistband)</b>                                     | 45"         | 1 1/4"       | 1 1/4"       | 1 1/4"        | 1 1/4"         | Yds.        |
| <b>Apron C</b>   | 45"         | - 1 yd.      |              |               |                |             |
| <b>Contrast 1 (Middle Front and Back)</b>                                      | 45"         | 1 1/4"       | 1 1/4"       | 1 1/4"        | 1 1/4"         | Yds.        |
| <b>Contrast 2 (Side Front and Back) - 45" - 1 yd.</b>                          |             |              |              |               |                |             |
| <b>Apron D</b>   | 45"         | - 1 1/2 yds. |              |               |                |             |
| <b>Contrast 1 (Front and Back, Middle Front and Back, Side Front and Back)</b> | 45"         | 1 1/4"       | 1 1/4"       | 1 1/2"        | 1 1/2"         | Yds.        |

**NOTE:** Please refer to the sewing instructions for FINISHED GARMENT MEASUREMENTS.

## TABLIERS POUR JEUNES FEMMES

**Tissus Conseillés:** Broadcloth, Calico, Chintz, Types coton, Vichy, Denim Léger, Types toile de lin. **Entoilage:** Thermocoilant léger.

**Mercerie:** A, B, C, D: Ruban de biais double de 1.3cm: 2 paquets pour A, D, 1 paquet pour B, 3 paquets pour C. **Aussi pour B:** 4.5m de garniture de dentelle plate de 3cm. **Aussi pour D:** 6.4m de garniture de dentelle plate à double bord de 1.3cm - 1.5cm.

| Tailles   | P      | M      | G   | TG  | TTG |       |
|---|--------|--------|-----|-----|-----|-------|
| <b>Entoilage A, B, C, D</b>   | 51cm   | 1.0    | 1.1 | 1.1 | 1.3 | 1.3 m |
| <b>Tablier A, B</b>   | 115cm* | 0.7    | 0.7 | 0.7 | 0.8 | 1.0 m |
| <b>Contraste 2 (Partie inférieure droite devant, Dos)</b>                     | 115cm* | 0.7    | 0.7 | 0.7 | 0.7 | m     |
| <b>A Contrast 1 (Partie supérieure droite devant)</b>                         | 115cm* | 0.5    | 0.5 | 0.5 | 0.6 | m     |
| <b>A Contrast 3, D Contrast 2 (Poche, Ceinture)</b>                           | 115cm* | 1.0    | 1.1 | 1.1 | 1.3 | 1.3 m |
| <b>B Contrast 1 (Partie supérieure droite devant, Volant) - 115cm* - 0.9m</b> |        |        |     |     |     |       |
| <b>B, C Contrast 3 (Poche, Ceinture)</b>                                      | 115cm* | 1.0    | 1.1 | 1.1 | 1.3 | 1.3 m |
| <b>Tablier C</b>  | 115cm* | - 0.9m |     |     |     |       |
| <b>Contraste 1 (Milieu devant et dos)</b>                                     | 115cm* | 1.5    | 1.6 | 1.6 | 1.6 | m     |
| <b>Contraste 2 (Côté devant et dos) - 115cm* - 0.9m</b>                       |        |        |     |     |     |       |
| <b>Tablier D</b>  | 115cm* | - 1.4m |     |     |     |       |
| <b>Contraste 1 (Devant et dos, Milieu devant et dos, Côté devant et dos)</b>  | 115cm* | 1.0    | 1.1 | 1.4 | 1.4 | 1.4 m |

**NOTE:** S'il vous plaît, reportez-vous aux instructions de couture pour les MESURES DU VÊTEMENTS FINI.

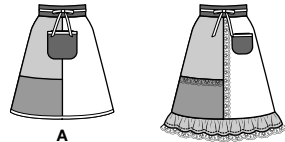
\*with nap \*\*without nap

\*avec sens \*\*sans sens

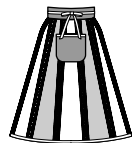
McCall's | by design group

Shop all the pattern brands you love @

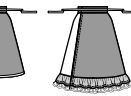
**Simplicity.com**



A



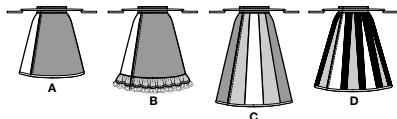
B



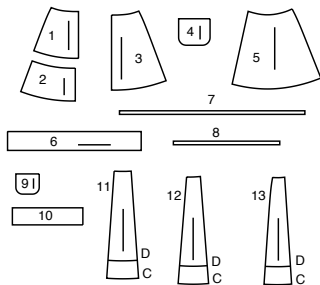
C



D



13 PATTERN PIECES



- 1 RIGHT UPPER FRONT - A,B
- 2 RIGHT LOWER FRONT - A,B
- 3 LEFT FRONT - A,B
- 4 POCKET - A,D
- 5 BACK - A,B
- 6 WAISTBAND - A,B,C,D
- 7 GUIDE FOR RIGHT TIE - A,B,C,D
- 8 GUIDE FOR LEFT TIE - A,B,C,D
- 9 POCKET - B,C
- 10 RUFFLE - B
- 11 FRONT AND BACK - C,D
- 12 MIDDLE FRONT AND BACK - C,D
- 13 SIDE FRONT AND BACK - C,D

| Sizes   | S<br>(8-10) | M<br>(12-14) | L<br>(16-18) | XL<br>(20-22) | XXL<br>(24-26) | Ins. |
|---|-------------|--------------|--------------|---------------|----------------|------|
| <b>FINISHED GARMENT MEASUREMENTS (Includes Design and Wearing Ease)</b> |             |              |              |               |                |      |
| A,B,C,D Waist   | 27          | 30½          | 34½          | 38½           | 42½            | Ins. |
| A,B,C,D Hip   | 41          | 44½          | 48½          | 52½           | 56½            | "    |
| Width, lower edge   |             |              |              |               |                |      |
| Apron A,B (not incl. ruffle for B)                                      | 57½         | 61½          | 65½          | 69½           | 73½            | Ins. |
| Apron C   | 70          | 73½          | 77½          | 81½           | 85½            | "    |
| Apron D   | 62¾         | 66¾          | 70¾          | 74¾           | 78¾            | "    |
| Finished back length from waist   |             |              |              |               |                |      |
| Apron A   | 20          | 20½          | 21           | 21½           | 22             | Ins. |
| Apron B   | 23½         | 24           | 24½          | 25            | 25½            | "    |
| Apron C   | 29          | 29½          | 30           | 30½           | 31             | "    |
| Apron D   | 24          | 24½          | 25           | 25½           | 26             | "    |

PATTERN MARKINGS

- GRAINLINE:** Place on straight grain of fabric, parallel to selvage or fold.
- FOLDLINE:** Place line on fold of fabric.
- BUTTONHOLE MARKING:** Indicates exact length and placement of buttonholes.
- BUTTON MARKING:** Indicates button placement.
- NOTCHES AND SYMBOLS:** For matching seams and construction details.
- Indicates the Bustline, Waistline, Hip and/or Biceps. Measurements refer to circumference of Finished Garment (Body Measurement + Wearing Ease + Design Ease). Adjust pattern if necessary. The measurement excludes pleats, tucks, darts and seam allowances.
- SEAM ALLOWANCE:** 5/8" (1.5cm) included unless otherwise indicated, but not printed on tissue.

ADJUST IF NECESSARY

- Lengthen or Shorten at adjustment lines (==)** or where indicated on pattern. If substantial length is added, you may need to purchase additional fabric.
- TO SHORTEN:** Crease along adjustment line. Make a fold half the amount needed. Tape in place.
- TO LENGTHEN:** Slash between adjustment lines. Spread amount as needed, keeping edges parallel. Tape over paper.
- When Alteration lines are not on tissue, lengthen or shorten at lower edge.

CUTTING AND MARKING

- SHRINK FABRIC** if not labeled pre-shrunk. Press.
- CIRCLE LAYOUT** for View, Size, Fabric Width.
- Use **WITH NAP** layout for fabrics with one-way designs, nap, pile or surface shading. Because most knits have surface shading, a with nap layout is used.
- For **DOUBLE THICKNESS (WITH FOLD)** - fold fabric with right sides together.
- \* DOUBLE THICKNESS (WITHOUT FOLD)** - For fabrics with nap, fold fabric crosswise, right sides together. Mark as shown. Cut along crosswise fold of fabric (A). Turn upper layer 180° so arrows go in same direction and place over lower layer, right sides together (B).
- For **SINGLE THICKNESS** - place fabric right side up. (For Fur Pile fabrics, place pile side down.)
- ★ Cut other pieces first, allowing enough fabric to cut this piece. Open fabric. For "Cut 1" pieces, cut piece once on single layer of fabric with piece face up on right side of fabric.
- Pattern may have cutting lines for several sizes. Select the proper cutting line or pattern pieces for your size.
- Before **CUTTING** place all pieces on fabric according to layout. Pin. (Layouts show approximate position of pattern pieces; position may vary according to your pattern size.) Cut **ACCURATELY**, cutting notches outward.
- Before removing pattern, **TRANSFER MARKINGS** and lines of construction to **WRONG SIDE** of fabric, using the Pin and Chalk Pencil method or Tracing Paper and Dressmaker Wheel. Markings needed on right side of fabric should be thread traced.
- NOTE:** Broken-line boxes (a! b! c!) in layouts represent pieces cut by measurements provided.

CUTTING LAYOUTS

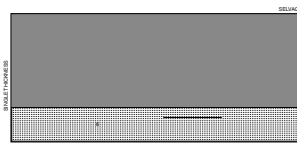
|                       |                       |                      |                      |
|-----------------------|-----------------------|----------------------|----------------------|
| RIGHT SIDE OF PATTERN | WRONG SIDE OF PATTERN | RIGHT SIDE OF FABRIC | WRONG SIDE OF FABRIC |
|-----------------------|-----------------------|----------------------|----------------------|

A,B,C,D: PIECES 7 8 ARE GUIDES FOR BIAS TAPE

INTERFACING A,B,C,D

USE PIECE: 6

20" (51 CM)  
ALL SIZES



A CONTRAST 3, D CONTRAST 2 (POCKET, WAISTBAND)

USE PIECES: 4 6

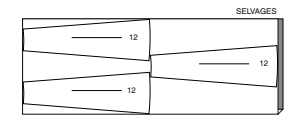
45" (115 CM)  
WITH NAP  
ALL SIZES



C CONTRAST 1 (MIDDLE FRONT AND BACK)

USE PIECE: 12

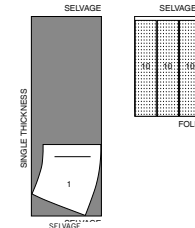
45" (115 CM)  
WITH NAP  
ALL SIZES



B CONTRAST 1 (RIGHT UPPER FRONT, RUFFLE)

USE PIECES: 1 10

45" (115 CM)  
WITH NAP  
ALL SIZES



C CONTRAST 2 (SIDE FRONT AND BACK)

USE PIECE: 13

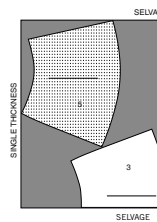
45" (115 CM)  
WITH NAP  
ALL SIZES



APRON A,B

USE PIECES: 3 5

45" (115 CM)  
WITH NAP  
ALL SIZES

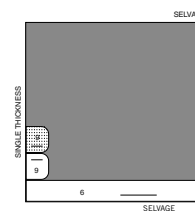


B,C CONTRAST 3 (POCKET/S, WAISTBAND)

USE PIECES: 6 9

CUT ONE PIECE 9 FOR VIEW B

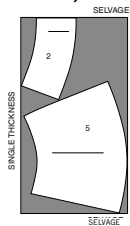
45" (115 CM)  
WITH NAP  
ALL SIZES



A,B CONTRAST 2 (RIGHT LOWER FRONT, BACK)

USE PIECES: 2 5

45" (115 CM)  
WITH NAP  
ALL SIZES



A CONTRAST 1 (RIGHT UPPER FRONT)

USE PIECE: 1

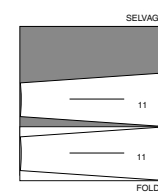
45" (115 CM)  
WITH NAP  
ALL SIZES



APRON C

USE PIECE: 11

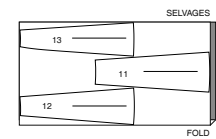
45" (115 CM)  
WITH NAP  
ALL SIZES



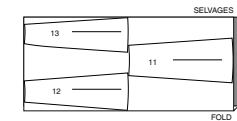
D CONTRAST 1 (FRONT AND BACK, MIDDLE FRONT AND BACK, SIDE FRONT AND BACK)

USE PIECES: 11 12 13

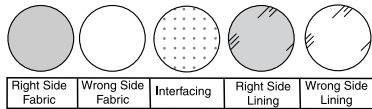
45" (115 CM)  
WITH NAP  
SIZES S M



45" (115 CM)  
WITH NAP  
SIZES L XL XXL

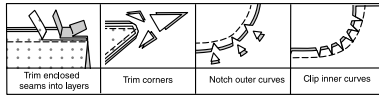


**SEWING INFORMATION**  
FABRIC KEY



**SEAM ALLOWANCES**

Use 5/8" (1.5cm) seam allowances unless otherwise indicated.



**PIN AND FIT**

Pin or baste seams, **RIGHT SIDE TOGETHER**, matching notches. Fit garment before stitching major seams.

**PRESS**

Press seam allowances flat; then open unless otherwise stated. Clip where necessary so they lie flat.

**GLOSSARY**

Sewing methods in **BOLD TYPE** have Sewing Tutorial Video available. Scan **QR CODE** to watch videos:

**EASE/GATHER** – See **Gathering: "sewing two row gathers"** video.

**EDGESTITCH** – See **Machine Stitches: "how to sew an edgestitch"** video.

**NARROW HEM** – See **Hems: "sewing narrow hems"** video.

**STAYSTITCH** – See **Machine Stitches: "how to do stay stitching"** video.

**TOPSTITCH** – See **Machine Stitches: "how to topstitch"** video.

SEWING TUTORIALS



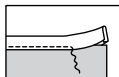
Build your skills viewing short, easy-to-follow videos at [simplicity.com/sewingtutorials](http://simplicity.com/sewingtutorials)

**GENERAL DIRECTIONS FOR APPLYING DOUBLE FOLD BIAS TAPE**

**A. ENCASE:**

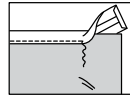
Double fold bias tape comes with one side slightly wider than the other. The wider side is used on the **INSIDE** so that when the tape is stitched in place from the **OUTSIDE**, both edges are caught in the stitching.

To finish edge of (item), slip the (item) between the folds of the bias tape placing the raw edge against the center crease and the wider folded edge of the tape on the **INSIDE** of the (item). Stitch the tape in place from the **OUTSIDE**, being sure to catch in the folded edge on the **INSIDE**.



**B. ENDS:**

Turn tape ends under to finish an edge.

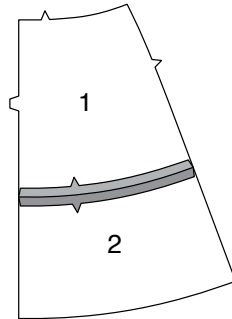


**APRON A, B, C, D**

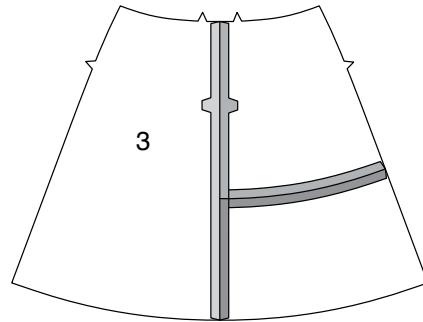
**NOTE:** Under each sub-heading, the first view mentioned, will be shown unless otherwise indicated.

**FRONT AND BACK A, B**

**1.** With **RIGHT** sides together, stitch **RIGHT UPPER FRONT** (1) to **RIGHT LOWER FRONT** (2), matching notches. Press seam open.

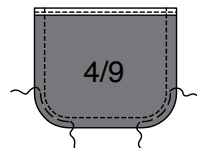


**2.** With **RIGHT** sides together, stitch **LEFT FRONT** (3) to side edge of **RIGHT** front, matching notches.

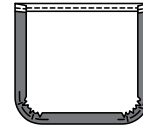


**3. ENCASE** upper edge of **POCKET** (4) or **POCKET** (9). See **GENERAL DIRECTIONS FOR APPLYING DOUBLE FOLD BIAS TAPE**.

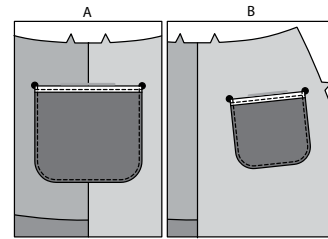
Stitch along seam line on raw edges of pocket. To ease curved edge of pocket, stitch 1/4"(6mm) **INSIDE** the seam line, using a long machine-stitch.



**4.** Press under raw edges of pocket along stitching. Pull up ease stitches to shape the curve. To eliminate bulk, notch out the fullness in the seam allowance along the curves as far as the ease stitches.



**5.** On **OUTSIDE**, pin pocket to front matching large dots. **EDGESTITCH** pockets in place, keeping upper edge free.

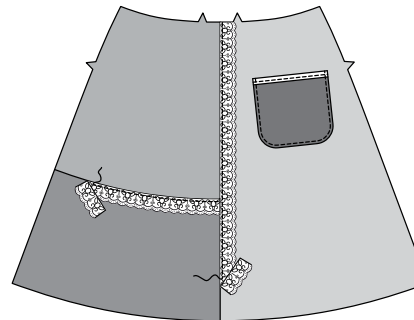


**6. VIEW B-** Cut a piece of flat lace trim the length of lower front seam.

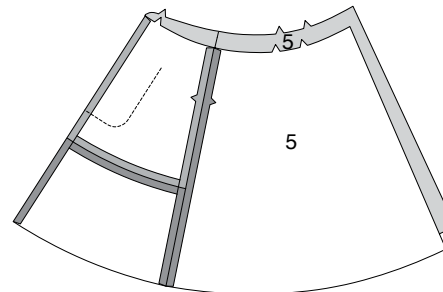
On **OUTSIDE**, pin flat edge of trim, just covering seam, having scalloped edge facing down. Stitch close to flat edge of trim.

Cut a piece of flat lace trim the length of front seam.

On **OUTSIDE**, pin flat edge of trim, just covering seam, having scalloped edge facing **LEFT** front, as shown. Stitch close to flat edge of trim.

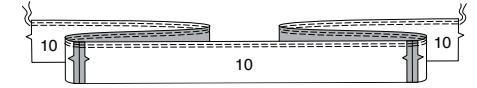


**7. VIEW A, B-** With **RIGHT** sides together, pin **BACK** (5) sections, to each side of front, matching notches. Stitch.

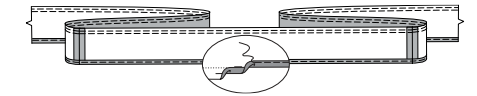


**8. VIEW B-** With **RIGHT** sides together, stitch ends of **RUFFLE** (10) sections together, leaving front edges free.

**GATHER** upper edge of ruffle.

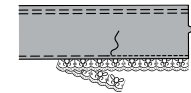


**9. NARROW HEM** lower edge of ruffle, basting hem in place.

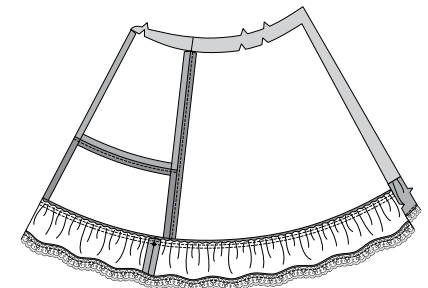


**10.** Cut a piece of flat lace trim the length of lower edge of ruffle. On **INSIDE**, pin trim to lower edge of ruffle, just covering hem.

On **OUTSIDE**, **TOPSTITCH** as basted, catching in trim on **INSIDE**.

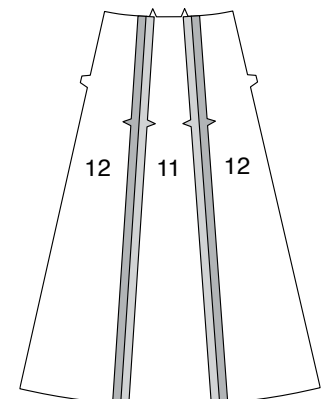


**11.** With **RIGHT** sides together, pin ruffle to lower edge of apron, having raw edges even. Adjust gathers to fit. Baste. Stitch. Press seam up, pressing ruffle out.

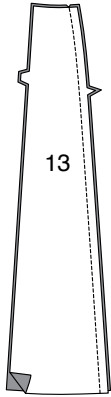


**FRONT AND BACK C, D**

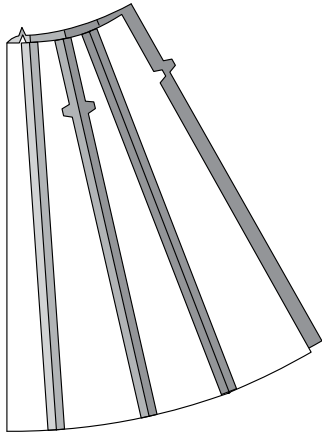
**12.** With **RIGHT** sides together, pin **MIDDLE FRONT AND BACK** (12) (cut from contrast 1) sections to each side of one **FRONT** and **BACK** (11) (cut from fabric) section. Stitch. Press seams open. This will be the skirt front.



**13.** Construct two side front and back sections as follows:  
With **RIGHT** sides together, stitch two **SIDE FRONT AND BACK** (13) sections together, matching single notches.  
(For view D, use fabric sections for side front and contrast sections for side back).

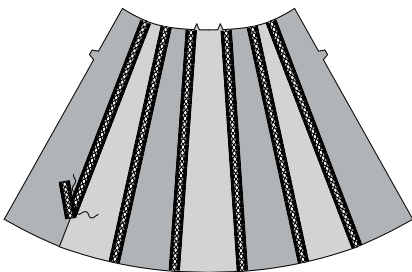


**14.** With **RIGHT** sides together, pin side front and back sections, to each side of front, matching double notches. Stitch. Press.

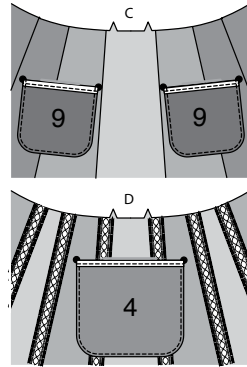


**15. VIEW D-** Cut six pieces of trim the length of front seams. On **OUTSIDE**, pin trim to front, centering over seam. Stitch close to long edges of trim.

**VIEW C, D-** Construct **POCKET** (4) OR (9) same as for **View A, B**. See steps 3 and 4.

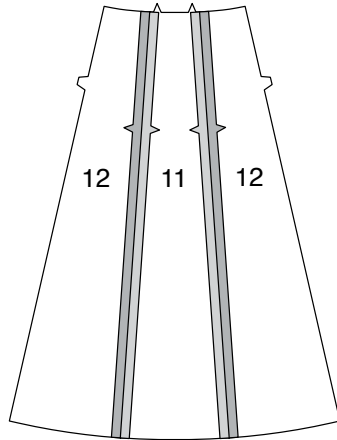


**16.** On **OUTSIDE**, pin pocket(s) to front matching large dots. **EDGESTITCH** pockets in place, keeping upper edge free.



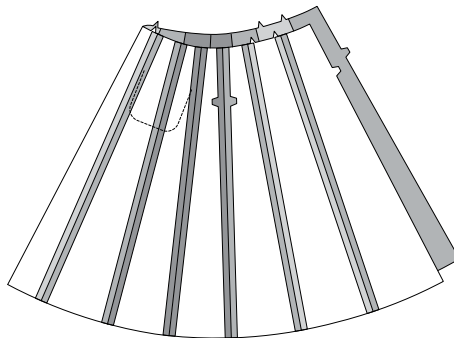
**17.** Construct two back sections as follows:

With **RIGHT** sides together, pin middle back (12) sections, to each side of front and back (11) section. Stitch. Press.



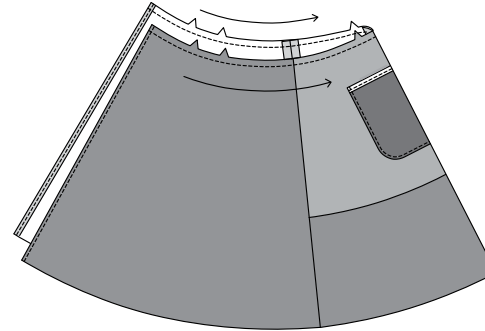
**18.** Stitch back sections to each side of front, matching notches, as shown.

**View D-** Apply trim to remaining seams, in same manner as front.



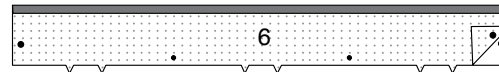
### WAISTBAND

**19. NARROW HEM** opening edges of apron, as shown. **STAYSTITCH** upper edge in direction of arrows..



**20.** Pin **INTERFACING** to wrong side of **WAISTBAND** (6). Fuse in place, following manufacturer's instructions.

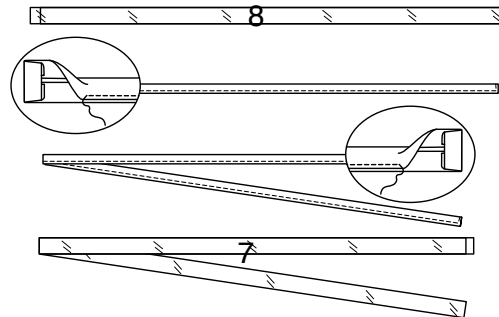
Press under seam allowance on unmarked edge of waistband.



**21.** Cut a piece of bias tape, each the length of **GUIDE FOR RIGHT TIE** (7), and **GUIDE FOR LEFT TIE** (8).

Turn in 5/8" (1.5cm) seam allowance on one end of each tie.

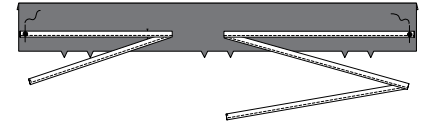
**EDGESTITCH** pressed edges of bias tape, as shown.



**22.** On **OUTSIDE**, pin **RIGHT** tie to **RIGHT** side of waistband, (side farthest away from buttonhole marking), centering end over large dot. Baste.

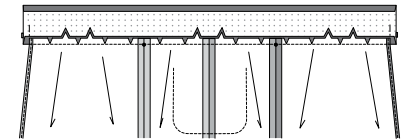
Pin **LEFT** tie to opposite side of waistband, having end centered at large dot. Baste.

**TIP:** Pin ties out of the way while stitching remaining seams.

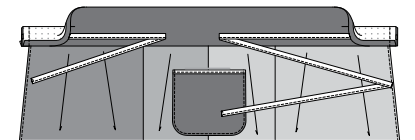


**23.** With **RIGHT** sides together, pin waistband to upper edge of apron, matching notches, placing small dots at side seams. Clip to stay-stitching if necessary. Stitch. Press seam up, pressing waistband out.

**NOTE:** waistband will extend 5/8" (1.5cm) beyond finished edges of apron.

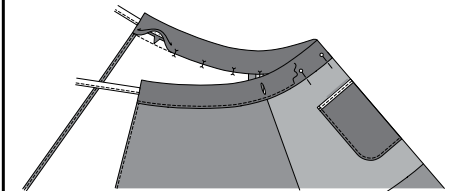


**24.** Fold ends of waistband to **OUTSIDE**, along fold line. Stitch ends.



**25.** Turn waistband to **INSIDE**. Press. Pin pressed edge of waistband over seam. On **OUTSIDE**, **EDGESTITCH** lower edge of waistband in place.

Make buttonhole in waistband at marking.



### FINISHING

**26. VIEW A, C, D-** **ENCASE** lower edge of apron with double fold bias tape. See **GENERAL DIRECTIONS FOR APPLYING DOUBLE FOLD BIAS TAPE**.

Tie apron as shown on front of envelope.





# Congrats!

You've completed your sewing adventure

---

**SHARE  
YOUR** LOOK



Post your pattern and tag us  
[@simplicity\\_creative\\_group](#) and [#simplicitypatterns](#)  
for a chance to be featured on our social media.

Look for more PDF patterns at [simplicity.com](https://www.simplicity.com)

Have a question or need help with your sewing project call us at  
1-800-782-0323

**McCall's**  
by **design**<sub>group</sub>

McCall's ©2024 a division of IG Design Group Americas Inc. • Atlanta, GA 30342 USA [www.thedesigngroup.com](http://www.thedesigngroup.com) • All Rights Reserved. [www.mccall.com](http://www.mccall.com) • Made in the U.S.A. Fabriqué aux États-Unis.

To be used for individual private home use only and not for commercial or manufacturing purposes. • A usage privé seulement et non à des fins commerciales ou de production en série. • Para uso privado solamente, no se puede utilizar con propósitos de comercialización o de producción en serie.