

McCall's

VINTAGE
60's



Designed and
printed in USA

M8571

Very Easy

MISSES' WRAP-A-ROUNDER DRESS IN SIX VERSIONS

Suggested Fabrics: Butcher Rayon, Cotton Broadcloth, Denim, Gingham, Homespun, Hopsacking, Poplin, Printed Cottons, Sharkskin, Synthetic Mixtures, Tweeds.

Notions: **View A:** 7 yds. (6.4m) of ½" (1.3cm) fold-over braid. **View B:** Two pkgs. of ½" (1.3cm) single fold bias tape. **View C:** One pkg. of ¼" (6mm) double fold bias tape, three pkgs. of medium rick rack. **View D:** Two pkgs. of ¼" (6mm) double fold bias tape, 5½ yds. (4.7m) of ½" (1.3cm) flat braid. **View E or F:** Two pkgs. of 1" (2.5cm) single fold bias tape.

Sizes	S (8-10)	M (12-14)	L (16-18)	XL (20-22)	XXL (24-26)
European	34-36	38-40	42-44	46-48	50-52

BODY MEASUREMENTS: Select pattern size based on body measurements

Bust	31½-32½	34-36	38-40	42-44	46-48	Ins.
Waist	24-25	26½-28	30-32	34-37	39-41½	"
Hip-9" below waist	33½-34½	36-38	40-42	44-46	48-50	"
Back-neck to waist	15¾-16	16¼-16½	16¾-17	17¼-17½	17¾-18	"

Dress A, C, D, E, F (cut crosswise)

45"*	1¾	1¾	1¾	2	2½	Yds.
------	----	----	----	---	----	------

Dress B (cut crosswise)

45"*	2	2	2½	2½	2¾	Yds.
------	---	---	----	----	----	------

FINISHED GARMENT MEASUREMENTS (Includes Design and Wearing Ease)

Bust/ Hip	38	41½	45½	49½	53½	Ins.
Width, lower edge						
Dress	38	41½	45½	49½	53½	Ins.
Finished back length from base of neck						
Dress	39	39½	40	40½	41	Ins.

*with nap **without nap

Très Facile

ROBE ENVELOPPANTE EN SIX MODÈLES POUR JEUNES FEMMES

Tissus Conseillés: Rayonne butcher, Broadcloth de coton, Denim, Vichy, Tissu homespun, Natté, Popeline, Cotons imprimés, Tissu sharkskin, Tissus mélangés de fibres synthétiques, Tweeds.

Merцерie: **Modèle A :** 6.4m de ruban à replier de 1.3 cm. **Modèle B :** 2 paquets de ruban de biais simple de 1.3 cm. **Modèle C :** 1 paquet de ruban de biais double de 6 mm, 1 paquet de croquet moyen. **Modèle D :** 2 paquets de ruban de biais double de 6 mm, 4.7m de galon plat de 1.3 cm. **Modèle E ou F :** 2 paquets de ruban de biais simple de 2.5 cm.

Tailles	P/S	M/M	G/L	TG/XL	TTG/XXL
Françaises	36-38	40-42	44-46	48-50	52-54
Européen	34-36	38-40	42-44	46-48	50-52

MESURES DU CORPS: Choisissez la taille du patron basée sur les mesures du corps

Poitrine	80-83	87-92	97-102	107-112	117-122	cm
Taille	61-64	67-71	76-81	87-94	99-105	"

Hanches (23cm au-dessous de la taille)

	85-88	92-97	102-107	112-117	122-127	cm
Dos du cou à la taille	40-40.5	41.5-42	42.5-43	44-44.5	45-45.5	"

Robe A, C, D, E, F (coupé dans la largeur)

115cm*	1.6	1.6	1.7	1.8	1.9	m
--------	-----	-----	-----	-----	-----	---

Robe B (coupé dans la largeur)

115cm*	1.7	1.8	1.9	2.1	2.2	m
--------	-----	-----	-----	-----	-----	---

MESURES DES VÊTEMENTS FINI (Motif et aisance de port compris)

Poitrine/ Hanches	97	105	116	126	136	cm
Largeur à l'ourlet						
Robe	97	105	116	126	136	cm
Longueur finie – dos, votre nuque à l'ourlet						
Robe	99	100	102	103	104	cm

*avec sens **sans sens



A



B



C



D



E



F

McCall's

9119

EASY SEWING GUIDE

FOR STEP-BY-STEP, CUTTING AND ASSEMBLING

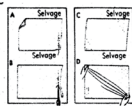
1. YOUR FABRIC

IMPORTANT — First be sure that wovens, washable fabrics and interfacings are pre-shrunk.

HOW TO STRAIGHTEN FABRIC

Straighten ends of fabric by tearing across, or if it does not tear well, draw a thread across; then cut on line of drawn thread (sketches A and B).

To straighten fabric (sketch C), stretch fabric on the bias in opposite direction until the crosswise threads are squared with the selvages (sketch D).

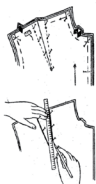

2. YOUR PATTERN

a. All the pattern pieces included in this design are shown in diagram below. Select the pattern pieces to be used. Place remaining pieces inside the envelope. Press pattern pieces.

b. If pattern adjustments are necessary, they should be made before placing pieces on fabric. **NOTE:** For complete information regarding pattern adjustments, see "McCall's Easy Sewing Book".

3. MARKING YOUR FABRIC

a. Marking chalk — Locate position of dart by placing pins firmly through pattern and two layers of fabric. Carefully remove pattern by pulling it over heads of marking pins. Draw a line along pins with chalk pencil and ruler on upper side. Turn piece over and mark position of pins on underside. Remove pins.



b. Tracing wheel — All markings should be made on the **WRONG SIDE** of fabric. Trace lines of pattern with a tracing wheel.



For single thickness, lay one piece of dressmaker's carbon paper **FACE UP** under the **WRONG SIDE** of fabric. For doubled fabric, lay one piece of tracing paper, **FACE UP**, under the fabric, another piece **FACE DOWN** directly underneath the tissue pattern.

GENERAL DIRECTIONS
STAY-STITCHING

Run a row of machine-stitching a scant 1/8" outside the seam line indicated on pattern to prevent edge from stretching.



BASTE GARMENT TOGETHER and try on for fitting before stitching seams.

TO MAKE DARTS—Fold dart on solid line, having **RIGHT SIDES** of fabric together; then stitch together along dotted lines to point.



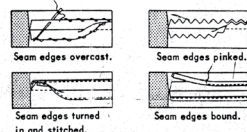
TRIM ENCLOSED SEAMS to about 1/4" from stitching on collars, etc., before turning right side out.



FOR A SEAM HAVING INTERFACING JOINED IN, first trim away seam allowance on interfacing close to stitching (sketch A); then trim remaining seam edges to 1/4" from stitching (sketch B). If heavy fabric is used, grade seam by trimming one edge a little more than the other to prevent a ridge when pressing.



CLIP SEAM EDGES on inward curves and corners when necessary.


SEAM FINISHINGS

PRESSING

PRESS SEAMS AND SECTIONS as the work progresses. Press each seam open after stitching unless the directions state otherwise.


2. CUTTING LAYOUTS FOR ALL SIZES

The pattern pieces shaded in the layouts, are to be laid face down. Pattern outlines show dotted indicate duplicate pieces.

The diagrams below show how to lay the pattern pieces on the fabric. Pin the pattern to fabric, overlapping the margin to save fabric.

HOW TO CUT — Cut pattern and fabric together through the white center of the double line. Do not cut off the margin before cutting fabric. The margin falls away as you cut through pattern and fabric.

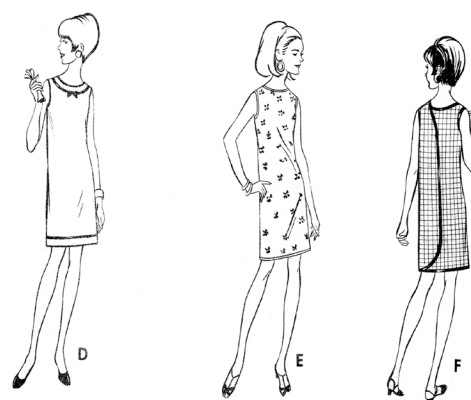
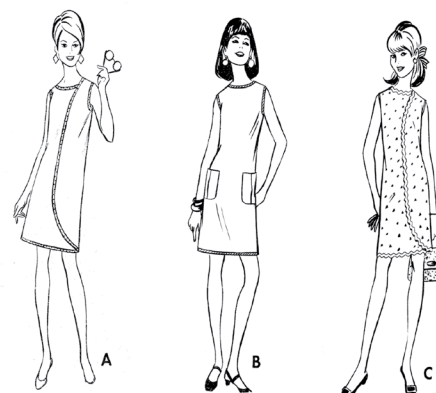
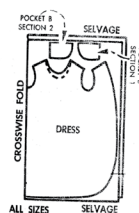
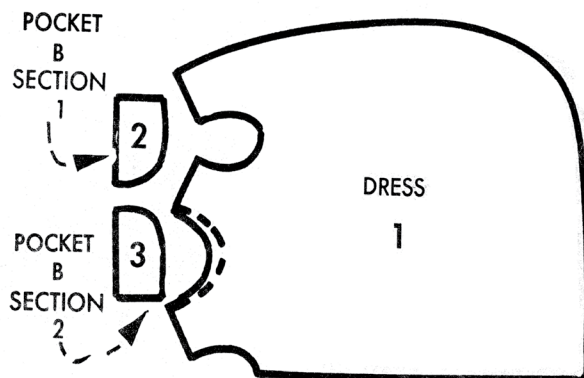
Patterns are made to body measurements. Ease is allowed for garment style and for wearing comfort.


DISREGARD ANY PERFORATIONS THAT MAY APPEAR ON PATTERN PIECES

9119

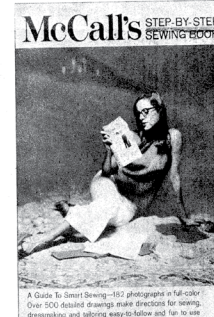
ALL VIEWS

45" FABRIC


1.
CHECK 3 PATTERN PIECES BEFORE CUTTING


PRINTED IN U.S.A.

have
you
seen
McCall's
complete
NEW
EASY
STEP-BY-STEP
SEWING
BOOK*



- **McCALL'S** revises its sewing book yearly to bring you...
- **NEW** and up-to-date material on fashion and fabric, plus McCall's own method of...
- **EASY SEWING** — shown in easy-to-follow diagrams with accompanying directions, all in a handy, soft-cover...
- **BOOK** form that is ideal for use as a reference manual at your machine.

*Look for it at your local McCall's pattern dealer.

9119

3. ASSEMBLING, SEWING AND FINISHING DETAILS

FOR MORE DETAILED INSTRUCTION, SEE McCALL'S EASY SEWING BOOK, AVAILABLE AT YOUR PATTERN COUNTER.

SHADED AREAS SHOW RIGHT SIDE OF FABRIC

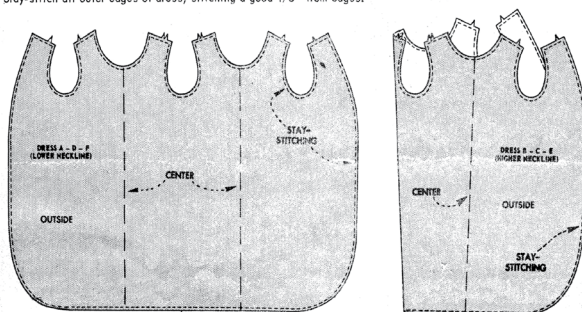
IMPORTANT: 5/8" seams are allowed on all edges unless otherwise specified on the pattern.

To JOIN SEAMS, match corresponding notch numbers.

WRAP-A-ROUNDER DRESS - 3 STEPS

1 STAY-STITCHING

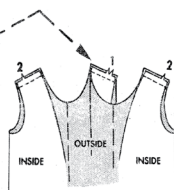
Stay-stitch all outer edges of dress, stitching a good 1/8" from edges.



2 SHOULDER SEAMS

Join shoulder edges together, matching notches 1, having RIGHT SIDES of fabric together.

Join each remaining shoulder seam of dress, matching notches 2, having RIGHT SIDES of fabric together.

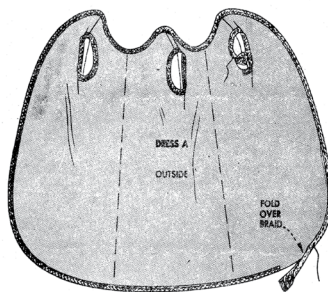


3 TO FINISH DRESS

DRESS A

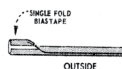
Slip outer edge of dress between edges of fold over braid so that fabric touches fold of braid, having narrower side of braid on RIGHT SIDE of dress; then baste in place thru all thicknesses, easing and stretching braid to fit and turning in and lapping one end of braid over the other at one lower side edge of dress, as illustrated. Stitch, as basted.

Bind each armhole edge of dress in same manner, lapping ends of braid at underarm edges.



DRESS B

Fold single fold bias tape in half, RIGHT SIDE OUT so that one edge is slightly narrower than the other and press, to form binding.



Slip outer edge of dress between edges of binding so that fabric touches fold of binding, having narrower side of binding on RIGHT SIDE of dress; then baste in place thru all thicknesses, easing and stretching binding to fit and turning in and lapping one end of binding over the other at one lower side edge of dress, as illustrated. Stitch, as basted.

Bind each armhole edge of dress in same manner, lapping ends of binding at underarm edges.

Join pocket section (1) to pocket section (2), RIGHT SIDES TOGETHER, taking up a 3/8" seam. Press seam edges together.

On OUTSIDE, make pleat in pocket on lines indicated and baste in place close to fold edge and across ends. Press. Overcast the top edge of pocket by hand or use machine attachment.

Turn down top of pocket on hemline, RIGHT SIDES TOGETHER. Stitch side edges of hem to pocket, taking up 3/8" seams.

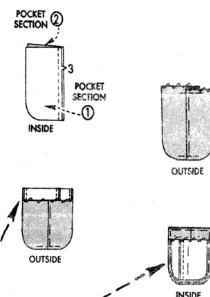
Turn hem to INSIDE. Turn under 3/8" on sides and lower edge of pocket below hem and baste, continuing to baste close to sides and fold edge of hem. Press.

Slipstitch inner edge of hem to pocket 1/4" from overcast edge.

Repeat for other pocket.

Try on dress. Place pockets as desired and pin to position.

Baste pockets in place, as pinned; then stitch close to sides and lower edge of each pocket.

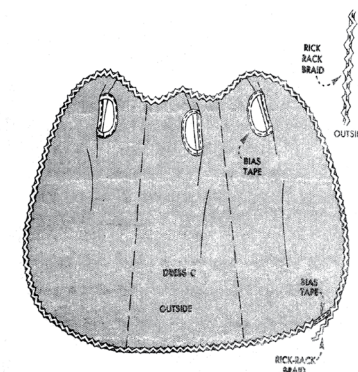


DRESS C

Slip outer edge of dress between edges of double fold bias tape binding so that fabric touches fold of binding, having narrower side of binding on RIGHT SIDE of dress; then baste in place thru all thicknesses, easing and stretching binding to fit and turning in and lapping one end of binding over the other at one lower side edge of dress. Stitch, as basted.

Bind each armhole edge of dress in same manner, lapping ends of binding at underarm edges.

Stitch center of rick rack braid over binding on outer edge of dress, turning in and lapping one end of braid over the other at joining of binding.



DRESS D

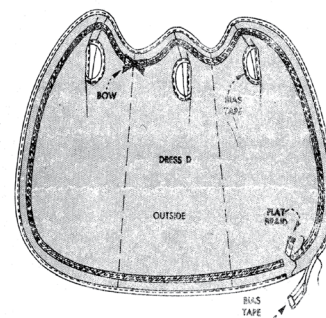
Slip outer edge of dress between edges of double fold bias tape binding so that fabric touches fold of binding, having narrower side of binding on RIGHT SIDE of dress; then baste in place thru all thicknesses, easing and stretching binding to fit and turning in and lapping one end of binding over the other at one lower side edge of dress, as illustrated. Stitch, as basted.

Bind each armhole edge of dress in same manner, lapping ends of binding at underarm edges.

Pin and baste flat braid along outer edge of dress, placing outer edge of braid about 1-3/8" from outer edge of dress, easing and stretching braid to fit flat and turning in and lapping one end of braid over the other in line with joining of binding on outer edge. Stitch inner and outer edges of braid to dress.

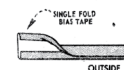
For bow, cut a 13" length of flat braid. Tie bow; then trim ends of bow diagonally.

Tack or pin bow over flat braid at center neck edge of dress.



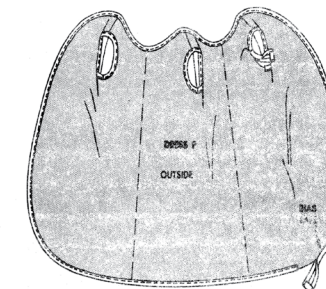
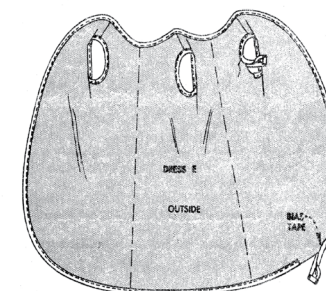
DRESS E OR F

Fold single fold bias tape in half, RIGHT SIDE OUT so that one edge is slightly narrower than the other and press, to form binding.



Slip outer edge of dress between edges of binding so that fabric touches fold of binding, having narrower side of binding on RIGHT SIDE of dress; then baste in place thru all thicknesses, easing and stretching binding to fit and turning in and lapping one end of binding over the other at one lower side edge of dress, as illustrated. Stitch, as basted.

Bind each armhole edge of dress in same manner, lapping ends of binding at underarm edges.



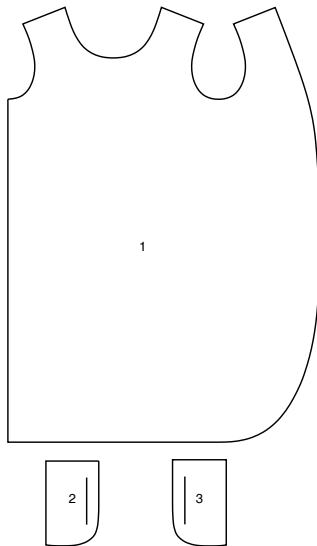
M8571

Page 3

McCall's
English 1-800-782-0323

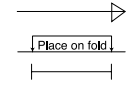
SUPPLEMENTAL CUTTING LAYOUTS

3 PATTERN PIECES



- 1 DRESS
2 POCKET - B (SECTION 1)
3 POCKET - B (SECTION 2)

PATTERN MARKINGS

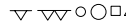


GRAINLINE: Place on straight grain of fabric, parallel to selvage or fold.

FOLDLINE: Place line on fold of fabric.

BUTTONHOLE MARKING: Indicates exact length and placement of buttonholes.

BUTTON MARKING: Indicates button placement.



NOTCHES AND SYMBOLS: For matching seams and construction details.



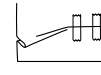
Indicates the Bustline, Waistline, Hip and/or Biceps. Measurements refer to circumference of Finished Garment (Body Measurement + Wearing Ease + Design Ease). Adjust pattern if necessary. The measurement excludes pleats, tucks, darts and seam allowances.

SEAM ALLOWANCE: 5/8" (1.5cm) included unless otherwise indicated, but not printed on tissue.

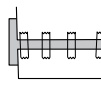
ADJUST IF NECESSARY

Lengthen or Shorten at adjustment lines (==) or where indicated on pattern. If substantial length is added, you may need to purchase additional fabric.

TO SHORTEN: Crease along adjustment line. Make a fold half the amount needed. Tape in place.



TO LENGTHEN: Slash between adjustment lines. Spread amount as needed, keeping edges parallel. Tape over paper.



When Alteration lines are not on tissue, lengthen or shorten at lower edge.

CUTTING AND MARKING

SHRINK FABRIC if not labeled pre-shrunk. Press.

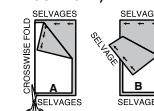
CIRCLE LAYOUT for View, Size, Fabric Width.

Use **WITH NAP** layout for fabrics with one-way designs, nap, pile or surface shading. Because most knits have surface shading, a with nap layout is used.

For **DOUBLE THICKNESS (WITH FOLD)** - fold fabric with right sides together.

*** DOUBLE THICKNESS (WITHOUT FOLD)** - For fabrics with nap, fold fabric crosswise, right sides together. Mark as shown. Cut along crosswise fold of fabric (A). Turn upper layer 180° so arrows go in same direction and place over lower layer, right sides together (B).

For **SINGLE THICKNESS** - place fabric right side up. (For Fur Pile fabrics, place pile side down.)



★ Cut other pieces first, allowing enough fabric to cut this piece. Open fabric. For "Cut 1" pieces, cut piece once on single layer of fabric with piece face up on right side of fabric.

Pattern may have cutting lines for several sizes. Select the proper cutting line or pattern pieces for your size.

Before **CUTTING** place all pieces on fabric according to layout. Pin. (**Layouts show approximate position of pattern pieces; position may vary according to your pattern size.**) Cut **ACCURATELY**, cutting notches outward.

Before removing pattern, **TRANSFER MARKINGS** and lines of construction to Wrong Side of fabric, using the Pin and Chalk Pencil method or Tracing Paper and Dressmaker Wheel. Markings needed on right side of fabric should be thread traced.

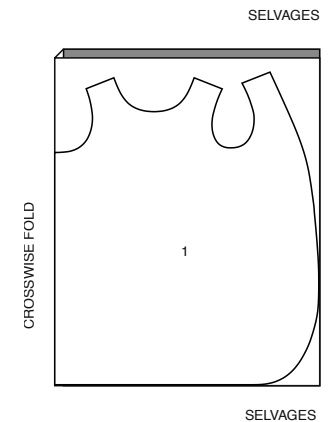
NOTE: Broken-line boxes (a! b! c!) in layouts represent pieces cut by measurements provided.

CUTTING LAYOUTS

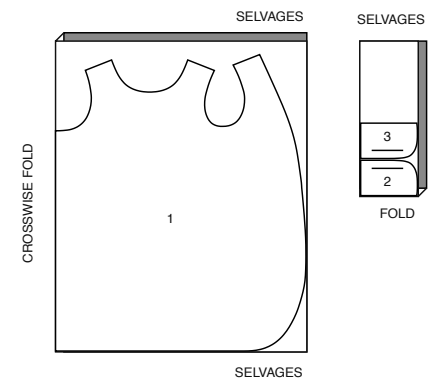
RIGHT SIDE OF PATTERN	WRONG SIDE OF PATTERN	RIGHT SIDE OF FABRIC	WRONG SIDE OF FABRIC
-----------------------	-----------------------	----------------------	----------------------

DRESS A,C,D,E,F
PIECE 1

45" (115CM)
WITH NAP
ALL SIZES

**DRESS B**
PIECES 1 2 3

45" (115CM)
WITH NAP
ALL SIZES





Congrats!

You've completed your sewing adventure

SHARE YOUR LOOK



Post your pattern and tag us
[@simplicity_creative_group](#) and [#simplicitypatterns](#)
for a chance to be featured on our social media.

Look for more PDF patterns at [simplicity.com](https://www.simplicity.com)

Have a question or need help with your sewing project call us at
1-800-782-0323

McCall's
by **design**_{group}

McCall's ©2024 a division of IG Design Group Americas Inc. • Atlanta, GA 30342 USA www.thedesigngroup.com • All Rights Reserved. www.mccall.com • Made in the U.S.A. Fabriqué aux États-Unis.
To be used for individual private home use only and not for commercial or manufacturing purposes. • A usage privé seulement et non à des fins commerciales ou de production en série. • Para uso privado solamente, no se puede utilizar con propósitos de comercialización o de producción en serie.