

McCall's

M8569

Easy

Facile

MISSSES' DRESS WITH SLEEVE VARIATIONS AND TOP

**Suggested Fabrics:** Challis, Cotton Blends, Lightweight Cotton, Lightweight Wool, Printed Cotton, Wool, Wool Crepe. **Interfacing:** Lightweight Fusible.

**Notions:** One 22" (56cm) zipper, two hooks and eyes, 3½ yds. (2.9m) of seam binding (for waist stay), ¾" (1.5cm) buttons: four for **A**, two for **B,C**.

| Sizes    | 6  | 8  | 10 | 12 | 14 | 16 | 18 | 20 | 22 | 24 |
|----------|----|----|----|----|----|----|----|----|----|----|
| European | 32 | 34 | 36 | 38 | 40 | 42 | 44 | 46 | 48 | 50 |

BODY MEASUREMENTS: Select pattern size based on body measurements

|                    |     |     |     |     |     |     |    |     |     |     |      |
|--------------------|-----|-----|-----|-----|-----|-----|----|-----|-----|-----|------|
| Bust               | 30½ | 31½ | 32½ | 34  | 36  | 38  | 40 | 42  | 44  | 46  | Ins. |
| Waist              | 23  | 24  | 25  | 26½ | 28  | 30  | 32 | 34  | 37  | 39  | "    |
| Hip-9" below waist | 32½ | 33½ | 34½ | 36  | 38  | 40  | 42 | 44  | 46  | 48  | "    |
| Back-neck to waist | 15½ | 15¾ | 16  | 16¼ | 16½ | 16¾ | 17 | 17¼ | 17½ | 17¾ | "    |

Interfacing A,B,C - 20" - ½ yd.

|         |      |    |    |    |    |    |    |    |    |    |      |
|---------|------|----|----|----|----|----|----|----|----|----|------|
| Dress A | 45"* | 4¾ | 4¾ | 4¾ | 4¾ | 5½ | 5½ | 5½ | 5½ | 5½ | Yds. |
| 60"*    | 3½   | 3½ | 3½ | 3½ | 3¾ | 4  | 4  | 4  | 4  | 4¼ | "    |

|         |      |    |    |    |    |    |    |    |   |    |      |
|---------|------|----|----|----|----|----|----|----|---|----|------|
| Dress B | 45"* | 3¾ | 3¾ | 3¾ | 3¾ | 3½ | 3½ | 3¾ | 4 | 4  | Yds. |
| 60"*    | 2¾   | 2½ | 2½ | 2½ | 2¾ | 3  | 3  | 3  | 3 | 3¾ | "    |

|       |      |    |    |    |    |    |    |    |    |    |      |
|-------|------|----|----|----|----|----|----|----|----|----|------|
| Top C | 45"* | 1¾ | 1¾ | 1¾ | 2  | 2  | 2½ | 2½ | 2½ | 2¾ | Yds. |
| 60"*  | 1¾   | 1½ | 1½ | 1¾ | 1¾ | 1¾ | 1¾ | 1¾ | 1¾ | 1¾ | "    |

FINISHED GARMENT MEASUREMENTS (Includes Design and Wearing Ease)

|                |    |    |    |     |     |     |     |     |     |     |      |
|----------------|----|----|----|-----|-----|-----|-----|-----|-----|-----|------|
| A,B,C Bust:    |    |    |    |     |     |     |     |     |     |     |      |
| Suppressed Fit | 32 | 33 | 34 | 35½ | 37½ | 39½ | 41½ | 43½ | 45½ | 47½ | Ins. |
| Standard Fit   | 33 | 34 | 35 | 36½ | 38½ | 40½ | 42½ | 44½ | 46½ | 48½ | "    |

Width, lower edge

|         |     |     |     |    |    |    |    |    |     |     |      |
|---------|-----|-----|-----|----|----|----|----|----|-----|-----|------|
| Dress A | 87½ | 88½ | 89½ | 91 | 93 | 95 | 97 | 99 | 101 | 103 | Ins. |
| Dress B | 76½ | 77½ | 78½ | 80 | 82 | 84 | 86 | 88 | 90  | 92  | "    |
| Top C   | 54½ | 55½ | 56½ | 58 | 60 | 62 | 64 | 66 | 68  | 70  | "    |

Finished back length from base of neck

|         |     |     |     |     |     |     |     |     |     |     |      |
|---------|-----|-----|-----|-----|-----|-----|-----|-----|-----|-----|------|
| Dress A | 57  | 57¼ | 57½ | 57¾ | 58  | 58¼ | 58½ | 58¾ | 59  | 59¼ | Ins. |
| Dress B | 46  | 46¼ | 46½ | 46¾ | 47  | 47¼ | 47½ | 47¾ | 48  | 48¼ | "    |
| Top C   | 23½ | 23¾ | 24  | 24¼ | 24½ | 24¾ | 25  | 25¼ | 25½ | 25¾ | "    |

\*with nap \*\*without nap

ROBE AVEC VARIATIONS DE MANCHE ET HAUT POUR JEUNES FEMMES

**Tissus Conseillés:** Challis, Cottonnades, Coton léger, Laine léger, Coton imprimé, Laine, Crêpe de laine.

**Entoilage:** Thermocollant léger.

**Mercerie:** 1 fermeture à glissière de 56cm, 2 agrafes, 2.9m d'extra-fort (pour le soutien de taille), boutons de 1.5cm: 4 pour **A**, 2 pour **B,C**.

| Tailles    | 6  | 8  | 10 | 12 | 14 | 16 | 18 | 20 | 22 | 24 |
|------------|----|----|----|----|----|----|----|----|----|----|
| Françaises | 34 | 36 | 38 | 40 | 42 | 44 | 46 | 48 | 50 | 52 |
| Européen   | 32 | 34 | 36 | 38 | 40 | 42 | 44 | 46 | 48 | 50 |

MESURES DU CORPS: Choisissez la taille du patron basée sur les mesures du corps

|  |      |    |      |      |    |      |     |     |      |     |    |
|--|------|----|------|------|----|------|-----|-----|------|-----|----|
| Poitrine                               | 78   | 80 | 83   | 87   | 92 | 97   | 102 | 107 | 112  | 117 | cm |
| Taille                                 | 58   | 61 | 64   | 67   | 71 | 76   | 81  | 87  | 94   | 99  | "  |
| Hanches (23cm au-dessous de la taille) | 83   | 85 | 88   | 92   | 97 | 102  | 107 | 112 | 117  | 122 | cm |
| Dos du cou à la taille                 | 39.5 | 40 | 40.5 | 41.5 | 42 | 42.5 | 43  | 44  | 44.5 | 45  | "  |

Entoilage A,B,C - 51cm - 0.5m

|        |        |     |     |     |     |     |     |     |     |     |   |
|--------|--------|-----|-----|-----|-----|-----|-----|-----|-----|-----|---|
| Robe A | 115cm* | 4.2 | 4.2 | 4.3 | 4.3 | 5.0 | 5.0 | 5.0 | 5.0 | 5.0 | m |
| 150cm* | 3.1    | 3.2 | 3.2 | 3.2 | 3.5 | 3.5 | 3.5 | 3.7 | 3.7 | 3.8 | " |

|        |        |     |     |     |     |     |     |     |     |     |   |
|--------|--------|-----|-----|-----|-----|-----|-----|-----|-----|-----|---|
| Robe B | 115cm* | 3.1 | 3.1 | 3.1 | 3.1 | 3.2 | 3.2 | 3.3 | 3.7 | 3.7 | m |
| 150cm* | 2.2    | 2.3 | 2.3 | 2.3 | 2.4 | 2.7 | 2.7 | 2.7 | 2.7 | 2.9 | " |

|        |        |     |     |     |     |     |     |     |     |     |   |
|--------|--------|-----|-----|-----|-----|-----|-----|-----|-----|-----|---|
| Haut C | 115cm* | 1.7 | 1.7 | 1.7 | 1.7 | 1.8 | 1.9 | 2.3 | 2.3 | 2.4 | m |
| 150cm* | 1.3    | 1.4 | 1.4 | 1.5 | 1.5 | 1.6 | 1.6 | 1.6 | 1.6 | 1.6 | " |

MESURES DES VÊTEMENTS FINI (Motif et aisance de port compris)

|                    |    |    |    |    |    |     |     |     |     |     |    |
|--------------------|----|----|----|----|----|-----|-----|-----|-----|-----|----|
| A,B,C Poitrine:    |    |    |    |    |    |     |     |     |     |     |    |
| Coupe près du corp | 81 | 84 | 86 | 90 | 95 | 100 | 105 | 110 | 116 | 121 | cm |
| Coupe Standard     | 84 | 86 | 89 | 93 | 98 | 103 | 108 | 113 | 118 | 123 | "  |

Largeur à l'ourlet

|        |     |     |     |     |     |     |     |     |     |     |    |
|--------|-----|-----|-----|-----|-----|-----|-----|-----|-----|-----|----|
| Robe A | 222 | 225 | 227 | 231 | 236 | 241 | 246 | 251 | 257 | 262 | cm |
| Robe B | 194 | 197 | 199 | 203 | 208 | 213 | 218 | 224 | 229 | 234 | "  |
| Haut C | 138 | 141 | 144 | 147 | 152 | 157 | 163 | 168 | 173 | 178 | "  |

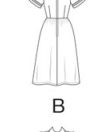
Longueur finie - dos, votre nuque à l'ourlet

|        |     |     |     |     |     |     |     |     |     |     |    |
|--------|-----|-----|-----|-----|-----|-----|-----|-----|-----|-----|----|
| Robe A | 145 | 145 | 146 | 147 | 147 | 148 | 149 | 149 | 150 | 150 | cm |
| Robe B | 117 | 117 | 118 | 119 | 119 | 120 | 121 | 121 | 122 | 123 | "  |
| Haut C | 60  | 60  | 61  | 62  | 62  | 63  | 64  | 64  | 65  | 65  | "  |

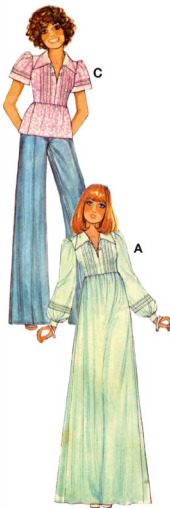
\*avec sens \*\*sans sens



A



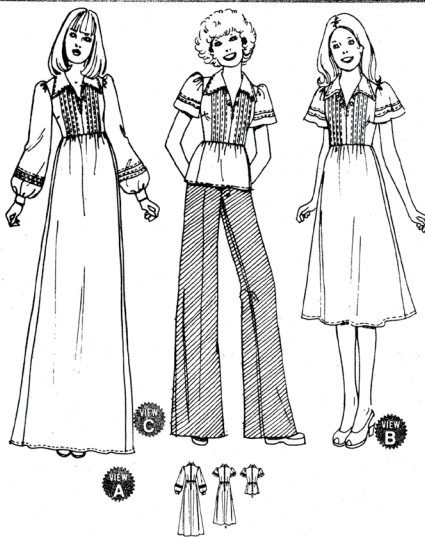
C



LAURA ASHLEY  
SINCE 1953

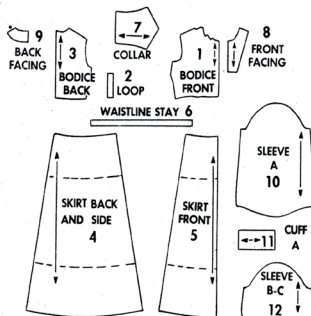
Designed and  
printed in USA

4941

CAREFREE PATTERNS  
FROM  
**McCALL'S**SELECT PATTERN PIECES  
FOR VIEW YOU HAVE CHOSEN

## 12 PATTERN PIECES

## DRESS A-B OR TOP C

VIEW A — USE PIECES 1 thru 11  
VIEW B OR C — USE PIECES 1 thru 9, 12NOTE: PATTERN PIECES 1, 3 AND 6  
HAVE LESS EASE FOR "LAURA  
ASHLEY'S" DESIGNER LOOK.PATTERN PIECES 1A, 3A AND 6A HAVE  
STANDARD McCALL'S PATTERN EASE\*SEE IMPORTANT COPY BELOW IN  
LAYOUT AREA.

## HOW TO USE A McCALL'S CAREFREE PATTERN

## STUDY THE PATTERN

Select pieces for VIEW you have chosen.

Check identification markings - Number, Size,  
Name and View - on each piece.

Understand the pattern markings.

Grainline: Place line on straight  
grain of fabric, an even distance  
from selvage.

Place on fold

Fold Line: Place on fold of fabric.

Cutting Line: For cutting.

Seam Line: For sewing.

Seam Allowance: Distance be-  
tween cutting and seam lines is  
usually 5/8" (1.5cm).Notches and Circles: For matching  
pattern pieces.

## ADJUST IF NECESSARY

A pattern is made to fit specific body meas-  
urements, with extra ease for comfort and style.Compare your body measurements to those  
listed on pattern envelope. Adjust pieces before  
placing them on fabric. Back waist and finished  
garment lengths can be adjusted using McCall's  
Easy-Rule Guide.\*To Shorten: Crease pattern on  
Easy-Rule Guide. Fold pleat  
necessary amount. Tape in  
place.To Lengthen: Cut pattern on  
dotted lines of Easy-Rule  
Guide. Spread necessary  
amount. Tape over paper.

## NOTE THE MEASUREMENTS

Abbreviations "mm" and "cm" are metric equi-  
valent for inches. They are provided for the  
convenience of those using the metric system of  
measurement.

|            |              |                |
|------------|--------------|----------------|
| 1/8" (3mm) | 1/2" (1.3cm) | 1" (2.5cm)     |
| 1/4" (6mm) | 5/8" (1.5cm) | 1 1/4" (3.1cm) |
| 3/8" (1cm) | 3/4" (2cm)   | 2" (5cm)       |

## LAYOUT FOR CUTTING

Shrink fabric not labeled pre-shrunk. Press.

Circle layout for View, Size, Fabric Width.

- Use With Nap layout for fabrics with one-way designs, nap, pile or surface shading.
- Use Without Nap layout for other fabrics.

Arrange fabric for cutting as shown on layout:

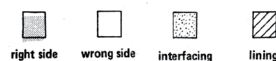
- Double Thickness - fold fabric with Right Sides Together.
- Single Thickness - place fabric Right Side Up.

Before cutting, place all pieces on fabric accord-  
ing to layout. Overlap margins. Pin.

## CUTTING AND MARKING

Cut accurately through fabric and pattern on  
cutting line. Cut notches outward.Before removing pattern, transfer markings to  
Wrong Side of fabric. One way which may be  
used quickly and safely on the widest range of  
fabrics is the Pin and Chalk Pencil method.\*Questions about sewing? Write Meg Carter, The McCall Pattern  
Company, 230 Park Avenue, New York, New York 10017.\*See McCall's Sewing Book for other adjustments and marking  
information.

## SEWING DIRECTIONS

READ directions for View you are making before beginning to  
sew.  
STUDY the drawings carefully.

SEW exactly on seam lines indicated on pattern. To make a seam:

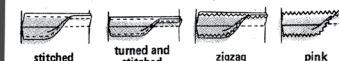
PIN two pieces of fabric, Right Sides  
Together matching notches and seam  
lines. BASTE, if desired, by hand or  
machine.

FIT garment before stitching major seams.

STITCH in direction of arrows. Use 5/8" (1.5cm) seam allowance unless  
otherwise indicated.

PRESS seams open unless otherwise noted.

FINISH raw edges of seams, facings and hems to prevent raveling:

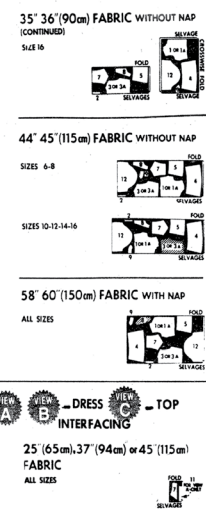
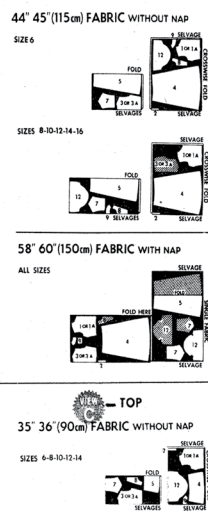
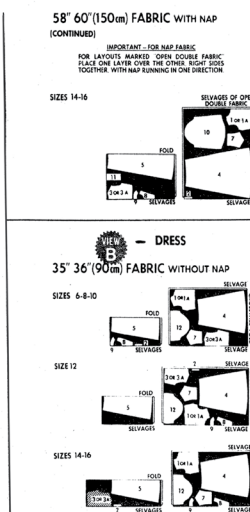
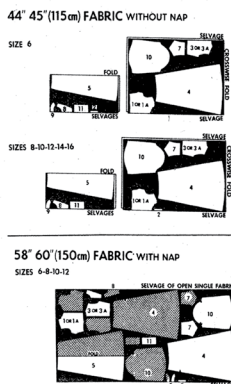
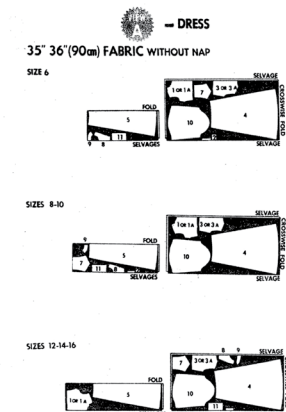


## SEWING TERMS

GRADE: Cut seam allowances to graduated  
widths and interfacing close to  
stitching.UNDERSTITCHING: Row of machine  
stitching thru facing and seam  
allowances close to seam line.  
Prevents facing from rolling to  
outside.INVISIBLE STITCH: Used for hemming.  
Turn hem back. Pick up a thread  
of garment; then pick up a thread  
of hem diagonally above.

## CUTTING LAYOUTS

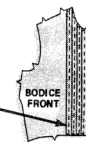
IMPORTANT — READ BEFORE LAYING OUT PATTERN PIECES

"LAURA ASHLEY'S" FAMOUS DESIGNER LOOK, FEATURES A HIGH TIGHT BODICE THAT ACTUALLY SUPPRESSES THE BUST. SELECT PATTERN  
PIECES 1, 3 AND 6 TO ACHIEVE THIS EXACT LOOK. IF YOU PREFER THE STANDARD AMOUNT OF BUST EASE FOUND IN ALL McCALL'S  
PATTERNS, SELECT PATTERN PIECES 1A, 3A AND 6A. USE YOUR SELECTED PATTERN PIECES IN FABRIC LAYOUTS BELOW.

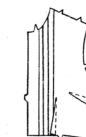
4941

NOTE: If FUSIBLE interfacing is used, follow  
manufacturer's directions.

## DRESS OR TOP

1. BODICE FRONT  
TUCKSTo make tucks, on OUTSIDE,  
fold on each solid line indicat-  
ed on pattern. Stitch on  
dotted lines. Press toward side  
edge.

## DARTS

Stitch darts in front. Press as  
illustrated.

## LOOPS

Fold strip for loops lengthwise, RIGHT SIDES TO-  
GETHER. Stitch 1/4" (6mm) from fold edge.Turn RIGHT SIDE OUT with a bodkin. Fold on seam  
and press.

Cut 2 loops, each 2-5/8" (6.5cm) long.

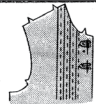


CONTINUED ON OTHER SIDE



## 4941 - PART 1

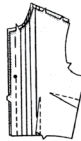
Pin loops to positions indicated on **OUTSIDE** of **RIGHT** bodice front, having seamed edges inward and raw edges even.



Test size of each loop by slipping button thru loops and adjusting size if necessary.

Baste loops in place 5/8" (1.5cm) from raw edges.

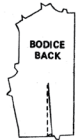
Stitch center front from lower edge to large circle.



## 2. BODICE BACKS

### DARTS

Stitch dart. Press toward center back.

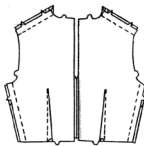


## 3. SHOULDER AND SIDE SEAMS

To ease in slight fullness at shoulder edges of back, make a row of machine-basting on seam line between notches.



Stitch back to front at shoulders, easing back to fit between notches.



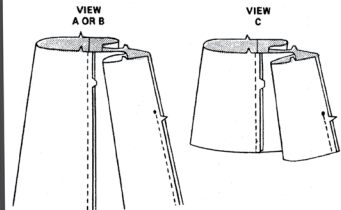
Stitch backs to front at sides.

## 4. SKIRT

### SEAMS

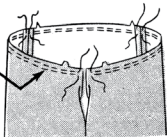
Stitch center back seam of skirt back and side from lower edge to circle.

Stitch skirt front to skirt back and side.



### GATHERS

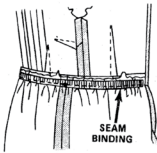
To gather skirt, machine-baste along lines indicated on pattern, breaking basting at seams.



## WAISTLINE STAY

Cut a piece of seam binding the length of waistline stay pattern piece. Transfer markings to seam binding.

On **INSIDE**, pin binding to upper edge of skirt with upper edge of binding 1/4" (6mm) from raw edge, matching center fronts, back edges and circles. Adjust gathers to fit. Baste.



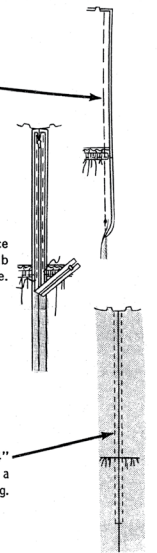
Pin skirt to bodice, **RIGHT SIDES TOGETHER**, matching centers and notches, having back edges even. Baste. Stitch seam. Press seam toward bodice.

## 5. ZIPPER

Machine-baste back opening edges together above circle.

On **INSIDE**, center zipper face down over seam with pull-tab 1" (2.5cm) from neck edge. Hand-baste.

On **OUTSIDE**, stitch 1/4" (6mm) from seam with a zipper foot. Remove basting.



## 6. COLLAR AND FACING

### COLLAR

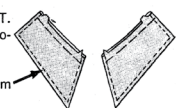
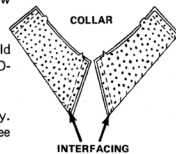
Baste interfacing to **WRONG** SIDE of collar sections. Sew to fold line.

Fold collar sections on fold line **RIGHT SIDES TOGETHER**. Stitch ends.

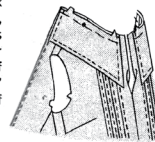
Cut corners diagonally. **GRADE** seam allowances: see **SEWING TERMS**.

Turn **RIGHT SIDE OUT**. Press. Baste raw edges together.

Top-stitch 1/4" (6mm) from finished edges.



Pin collar sections to neck edge, **RIGHT SIDES UP**, matching notches, back edges and collar circles to shoulder seams. (Front edges of garment extends 5/8" [1.5cm] beyond front edge of collar sections). Baste.



### FACING

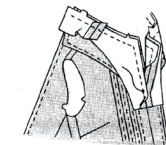
Stitch center front seam of front facing from lower edge to circle.

Stitch back facing to front facing at shoulders.

Finish outer **UN-NOTCHED** edge: see **SEWING DIRECTIONS**.

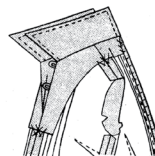
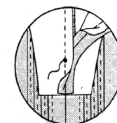
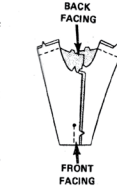
Pin facing to front and neck edges, **RIGHT SIDES TOGETHER**, matching notches, circles and seams. Stitch, breaking stitching at circles.

**GRADE** seam allowances. Turn facing to **INSIDE**. Press. Catch-stitch to seams.

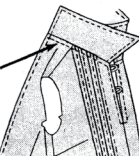


Turn in back edges of facing and hem to zipper tapes.

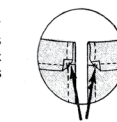
Catch-stitch facing to seams.



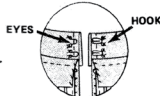
Turn up collar sections and top-stitch 1/4" (6mm) from neck seam and front edges as illustrated.



Turn down back edge of collar sections so that lower edges are 1/4" (6mm) below neck seam. **TACK** neck seam as illustrated.



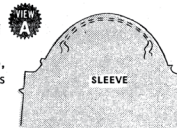
Sew hooks and eyes to under-side of collar as illustrated.



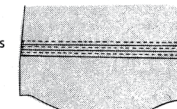
## 7. SLEEVES

### SLEEVE PREPARATION

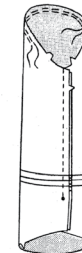
To gather sleeve cap, machine-baste along lines indicated on pattern.



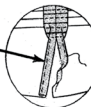
Make tucks in sleeve. Press tucks down.



Stitch sleeve seam from armhole edge to circle.



Finish opening edges below circle with **NARROW HEMS** by machine, squaring stitching at upper edge of opening as illustrated.



To gather lower edge of sleeve, machine-baste along lines indicated on pattern.



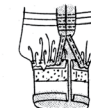
Press under 5/8" (1.5cm) on long **UN-NOTCHED** edge of cuff.



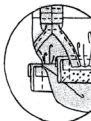
Baste interfacing to **WRONG** SIDE of **NOTCHED** edge of cuff. Sew to fold line.

INTERFACING

Pin cuff to sleeve, **RIGHT SIDES TOGETHER**, matching notches and having circles at opening. Adjust gathers to fit. Baste. Stitch.



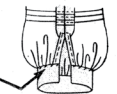
**GRADE** seam allowances. Press seam allowances toward cuff.



Fold cuff on fold line, **RIGHT SIDES TOGETHER**. Stitch ends.

Cut corners diagonally. **GRADE** seam allowances.

Turn cuff **RIGHT SIDE OUT**. Hem edge over seam.



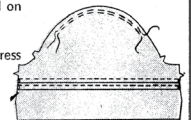
Make worked buttonhole at position indicated on cuff.

Sew button to position indicated on cuff.

### SLEEVE PREPARATION

To gather sleeve cap, machine-baste along lines indicated on pattern.

Make tucks in sleeve. Press tucks down.

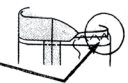


Stitch sleeve seam.



Turn up lower edge on hemline. Press.

Finish lower raw edge.



Sew with **INVISIBLE STITCH**: see **SEWING TERMS**.

### SETTING SLEEVE INTO ARMHOLE

With **RIGHT SIDES TOGETHER**, pin sleeve into armhole, matching underarm seams, small circles and **LARGE** circle to shoulder seam. Pull up and adjust gathers to fit.



Baste. Stitch. Turn seam allowances toward sleeve.

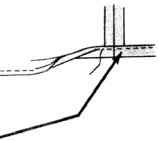
## 8. FINISHING

### LOWER EDGE

Mark hemline.

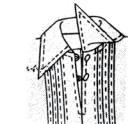
Cut lower edge to 1" (2.5cm) below marked length.

To **NARROW HEM** lower edge of garment, stitch 3/8" (1cm) from raw edge. Turn under raw edge on line of stitching. Press. Turn under again 5/8" (1.5cm) and stitch in place. Press.



### BUTTONS

Bring front opening edges of bodice together and sew buttons to left bodice front to correspond with loops.



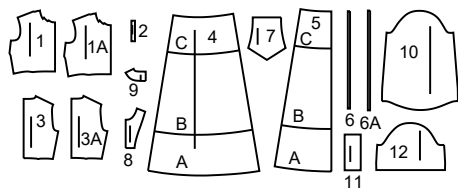


## SUPPLEMENTAL CUTTING LAYOUTS

**IMPORTANT – READ BEFORE LAYING OUT PATTERN PIECES.**

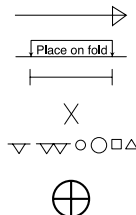
"LAURA ASHLEY'S" FAMOUS DESIGNER LOOK FEATURES A HIGH TIGHT BODICE THAT ACTUALLY SUPPRESSES THE BUST. SELECT PATTERN PIECES 1, 3, AND 6 TO ACHIEVE THIS EXACT LOOK. IF YOU PREFER THE STANDARD AMOUNT OF BUST EASE FOUND IN ALL McCALL'S PATTERNS, SELECT PATTERN PIECES 1A, 3A AND 6A. USE YOUR SELECTED PATTERN PIECES IN FABRIC LAYOUTS BELOW.

## 12 PATTERN PIECES



- 1 Bodice Front
- 1A Bodice Front
- 2 Loop
- 3 Bodice Back
- 3A Bodice Back
- 4 Skirt Back and Side
- 5 Skirt Front
- 6 Waistline Stay
- 6A Waistline Stay
- 7 Collar
- 8 Front Facing
- 9 Back Facing
- 10 Sleeve A
- 11 Cuff A
- 12 Sleeve-B,C

## PATTERN MARKINGS



**GRAINLINE:** Place on straight grain of fabric, parallel to selvage or fold.

**FOLDLINE:** Place line on fold of fabric.

**BUTTONHOLE MARKING:** Indicates exact length and placement of buttonholes.

**BUTTON MARKING:** Indicates button placement.

**NOTCHES AND SYMBOLS:** For matching seams and construction details.

Indicates the Bustline, Waistline, Hip and/or Biceps. Measurements refer to circumference of Finished Garment (Body Measurement + Wearing Ease + Design Ease). Adjust pattern if necessary. The measurement excludes pleats, tucks, darts and seam allowances.

**SEAM ALLOWANCE:** 5/8" (1.5cm) included unless otherwise indicated, but not printed on tissue.

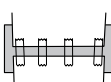
## ADJUST IF NECESSARY

Lengthen or Shorten at adjustment lines (==) or where indicated on pattern. If substantial length is added, you may need to purchase additional fabric.

**TO SHORTEN:** Crease along adjustment line. Make a fold half the amount needed. Tape in place.



**TO LENGTHEN:** Slash between adjustment lines. Spread amount as needed, keeping edges parallel. Tape over paper.



When Alteration lines are not on tissue, lengthen or shorten at lower edge.

## CUTTING AND MARKING

**SHRINK FABRIC** if not labeled pre-shrunk. Press.

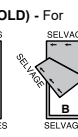
**CIRCLE LAYOUT** for View, Size, Fabric Width.

Use **WITH NAP** layout for fabrics with one-way designs, nap, pile or surface shading. Because most knits have surface shading, a with nap layout is used.

For **DOUBLE THICKNESS (WITH FOLD)** - fold fabric with right sides together.

**\* DOUBLE THICKNESS (WITHOUT FOLD)** - For fabrics with nap, fold fabric crosswise, right sides together. Mark as shown. Cut along crosswise fold of fabric (A). Turn upper layer 180° so arrows go in same direction and place over lower layer, right sides together (B).

For **SINGLE THICKNESS** - place fabric right side up. (For Fur Pile fabrics, place pile side down.)



★ Cut other pieces first, allowing enough fabric to cut this piece. Open fabric. For "Cut 1" pieces, cut piece once on single layer of fabric with piece face up on right side of fabric.

Pattern may have cutting lines for several sizes. Select the proper cutting line or pattern pieces for your size.

Before **CUTTING** place all pieces on fabric according to layout. Pin. (Layouts show approximate position of pattern pieces; position may vary according to your pattern size.) Cut **ACCURATELY**, cutting notches outward.

Before removing pattern, **TRANSFER MARKINGS** and lines of construction to Wrong Side of fabric, using the Pin and Chalk Pencil method or Tracing Paper and Dressmaker Wheel. Markings needed on right side of fabric should be thread traced.

**NOTE:** Broken-line boxes (at bl cl) in layouts represent pieces cut by measurements provided.

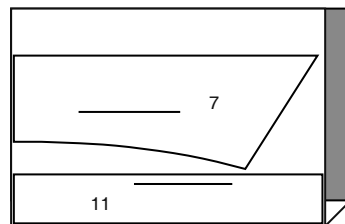
## CUTTING LAYOUTS

## INTERFACING A,B,C

USE PIECES 7 11

20" (51cm)  
ALL SIZES

SELVAGES



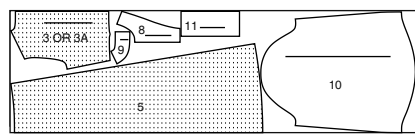
FOLD

## DRESS A

USE PIECES 1 2 3 4 5 7 8 9 10 11

45" (115cm)  
WITH NAP  
SIZES 6 8 10 12

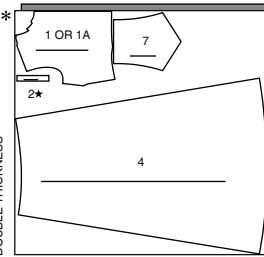
SELVAGES



FOLD

DOUBLE THICKNESS

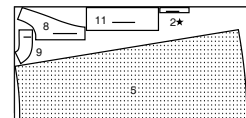
SELVAGES



SELVAGES

45" (115cm)  
WITH NAP  
SIZES 14 16 18 20 22 24

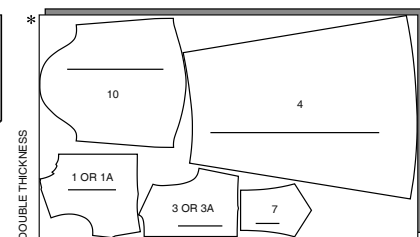
SELVAGES



FOLD

DOUBLE THICKNESS

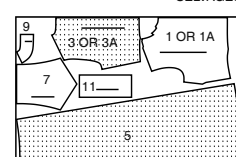
SELVAGES



SELVAGES

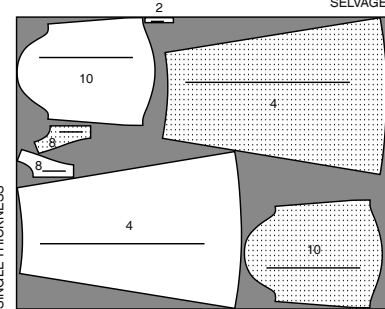
60" (150cm)  
WITH NAP  
SIZES 6 8 10 12

SELVAGES



FOLD

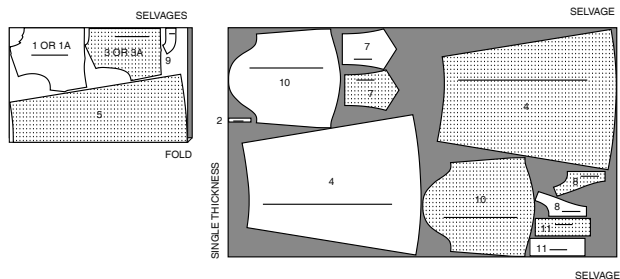
SINGLE THICKNESS



SELVAGE

# M8569 - Page 4

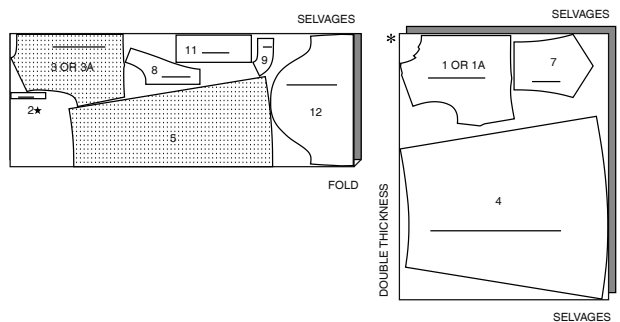
60" (150cm)  
WITH NAP  
SIZES 14 16 18 20 22 24



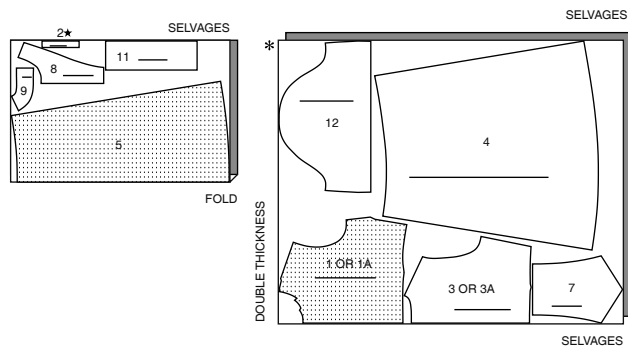
## DRESS B

USE PIECES 1 2 3 4 5 7 8 9 11 12

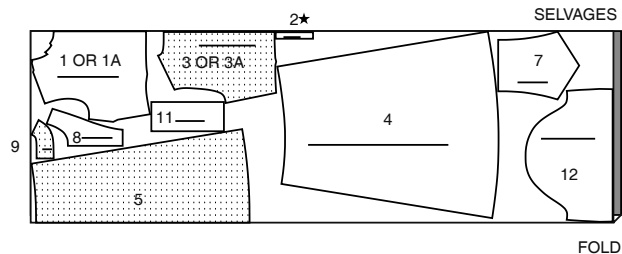
45" (115cm)  
WITH NAP  
SIZES 6 8 10 12 14 16 18



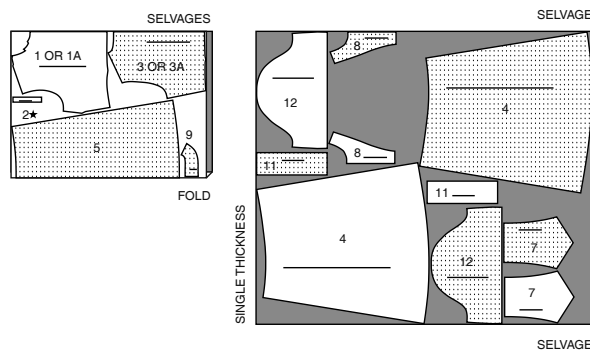
45" (115cm)  
WITH NAP  
SIZES 20 22 24



60" (150cm)  
WITH NAP  
SIZES 6 8 10 12 14



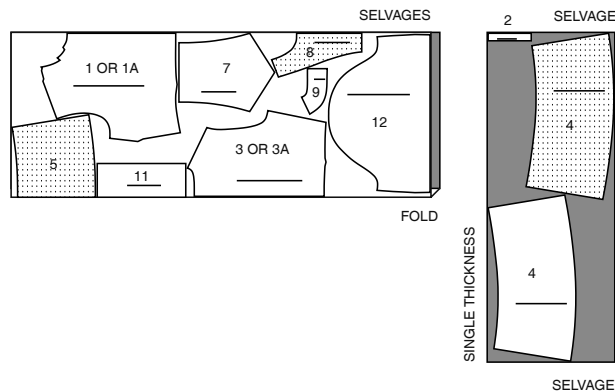
60" (150cm)  
WITH NAP  
SIZES 16 18 20 22 24



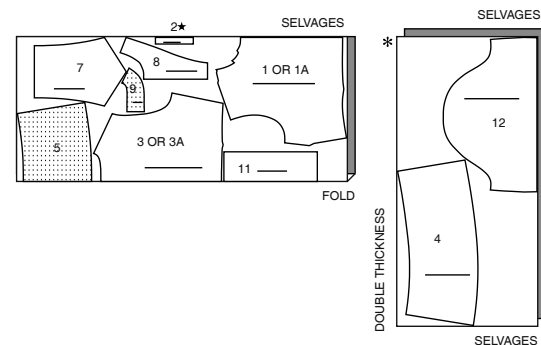
## TOP C

USE PIECES 1 2 3 4 5 7 8 9 11 12

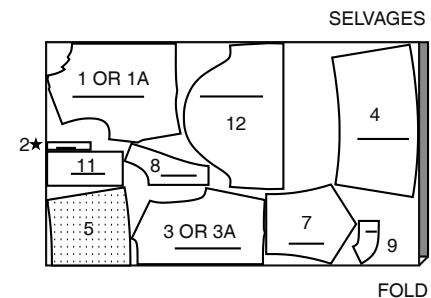
45" (115cm)  
WITH NAP  
SIZES 6 8 10 12 14 16



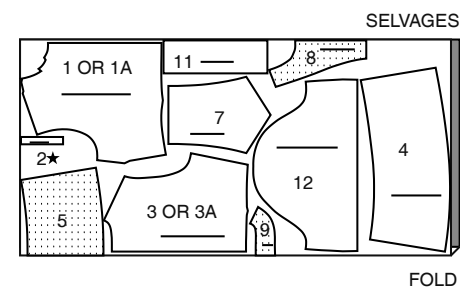
45" (115cm)  
WITH NAP  
SIZES 18 20 22 24



60" (150cm)  
WITH NAP  
SIZES 6 8 10 12



60" (150cm)  
WITH NAP  
SIZES 14 16 18 20 22 24





# Congrats!

You've completed your sewing adventure

---

## SHARE YOUR LOOK



Post your pattern and tag us  
[@simplicity\\_creative\\_group](#) and [#simplicitypatterns](#)  
for a chance to be featured on our social media.

Look for more PDF patterns at [simplicity.com](https://www.simplicity.com)

Have a question or need help with your sewing project call us at  
1-800-782-0323

**McCall's**  
by **design**<sub>group</sub>

McCall's ©2024 a division of IG Design Group Americas Inc. • Atlanta, GA 30342 USA [www.thedesigngroup.com](http://www.thedesigngroup.com) • All Rights Reserved. [www.mccall.com](http://www.mccall.com) • Made in the U.S.A. Fabriqué aux États-Unis.

To be used for individual private home use only and not for commercial or manufacturing purposes. • A usage privé seulement et non à des fins commerciales ou de production en série. • Para uso privado solamente, no se puede utilizar con propósitos de comercialización o de producción en serie.