

**McCall's**

M8567



Designed and printed in USA

Average

**CHILDREN'S JUMPSUIT WITH SLEEVE VARIATIONS**

**Suggested Fabrics:** Broadcloth, Chambray, Chino, Cotton Blends, Denim, Linen Blends, Stretch Wovens. **Interfacing:** Lightweight Fusible.

**Notions:** A: Four 5/8" (1.5cm) buttons. B: Six 5/8" (1.5cm) buttons, 3/4 yd. (0.7m) of 3/4" (2cm) elastic.

Sizes	3	4	5	6	7	8
-------	---	---	---	---	---	---

**BODY MEASUREMENTS:** Select pattern size based on body measurements

<b>Chest/ Bust</b>	22	23	24	25	26	27	Ins.
<b>Waist</b>	20½	21	21½	22	23	23½	"
<b>Hip</b>	—	24	25	26	27	28	"
<b>Back-neck to waist</b>	9	9½	10	10½	11½	12	"
<b>Jumpsuit A</b>	45**	2	2½	2½	2¼	2¼	2¾
	60"	1½	1½	1½	1¾	1¾	1¾
<b>Interfacing</b>	20"	¾ yd.					
<b>Jumpsuit B</b>	45**	2¼	2¼	2¾	2½	2½	2¾
	60"	1½	1½	1¾	2	2	2½
<b>Interfacing</b>	20"	1 yd.					

**FINISHED GARMENT MEASUREMENTS (Includes Design and Wearing Ease)**

<b>A,B Chest</b>	26	27	28	29	30	31	Ins.
<b>A,B Waist</b>	28	29	30	31	32	33	"
<b>A,B Hip</b>	30	30	31	32	33	34	"
<b>Width, each leg</b>							
<b>Jumpsuit A</b>	12¼	13	13¾	14½	15¼	16	Ins.
<b>Finished back length from base of neck</b>							
<b>Jumpsuit A,B</b>	34	35½	37½	39½	41½	43½	Ins.

\*with nap \*\*without nap

Moins Facile

**COMBINAISON AVEC VARIATIONS DE MANCHE POUR ENFANTS**

**Tissus Conseillés:** Broadcloth, Chambray, Chino, Cotonnades, Denim, Lin mélangés, Tissus tissés extensibles. **Entoilage:** Thermocollant léger.

**Merceria:** A: 4 boutons de 1.5cm. B: 6 boutons de 1.5cm, 0.7m d'élastique de 2cm.

Tailles	3	4	5	6	7	8
---------	---	---	---	---	---	---

**MESURES DU CORPS:** Choisissez la taille du patron basée sur les mesures du corps

<b>Poitrine</b>	56	58.5	61	63.5	66	68.5	cm
<b>Taille</b>	52	53.5	54.5	56	58.5	59.5	"
<b>Hanches</b>	—	61	63.5	66	68.5	71	"
<b>Dos du cou à la taille</b>	23	24	25.5	26.5	29	30.5	"
<b>Combinaison A</b>	115cm*	1.8	1.9	1.9	2.1	2.1	2.2
	150cm*	1.4	1.4	1.5	1.6	1.6	1.7
<b>Entoilage</b>	51cm	0.7m					
<b>Combinaison B</b>	115cm*	2.1	2.1	2.2	2.2	2.3	2.4
	150cm*	9 1.5	1.5	1.6	1.7	1.8	1.9
<b>Entoilage</b>	51cm	0.9m					

**MESURES DES VÊTEMENTS FINI (Motif et aisance de port compris)**

<b>A,B Poitrine</b>	66	69	71	74	76	79	cm
<b>A,B Taille</b>	71	74	76	79	81	84	"
<b>A,B Hanches</b>	76	76	79	81	84	86	"
<b>Largeur, chaque jambe</b>							
<b>Combinaison A</b>	31	33	35	37	39	41	cm
<b>Longueur finie – dos, votre nuque à l'ourlet</b>							
<b>Combinaison A,B</b>	86	90	95	100	105	110	cm

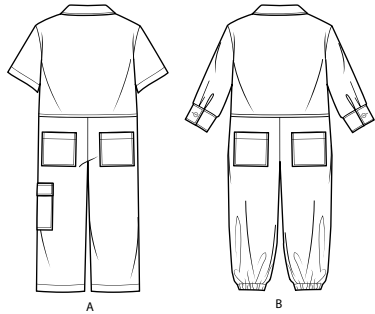
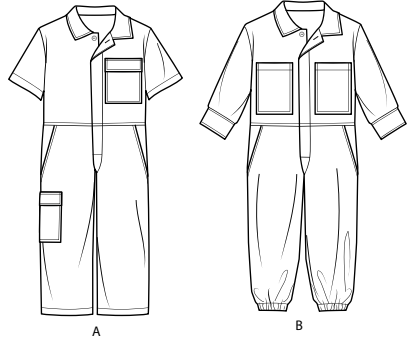
\*avec sens \*\*sans sens



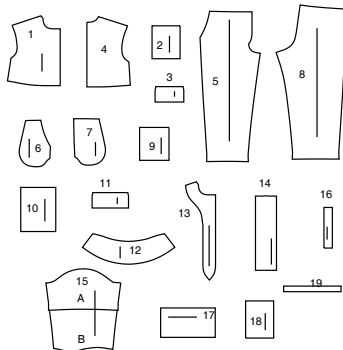
A



B

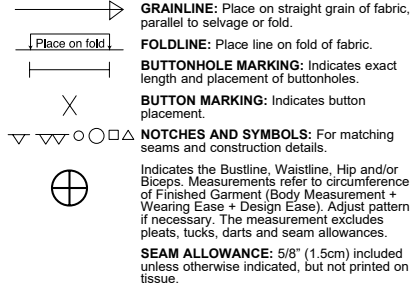


19 PATTERN PIECES



- 1 BODICE FRONT - A,B
- 2 UPPER POCKET - A
- 3 UPPER FLAP - A
- 4 BODICE BACK - A,B
- 5 PANTS FRONT - A,B
- 6 POCKER FACING - A,B
- 7 SIDE FRONT AND POCKET - A,B
- 8 PANTS BACK - A,B
- 9 BACK POCKET - A,B
- 10 LOWER POCKET - A
- 11 LOWER FLAP - A
- 12 COLLAR - A,B
- 13 FRONT FACING - A,B
- 14 PLACKET - A,B
- 15 SLEEVE - A,B
- 16 CONTINUOUS LAP - B
- 17 CUFF - B
- 18 UPPER POCKET - B
- 19 ELASTIC GUIDE FOR LEG - B

**PATTERN MARKINGS**



**ADJUST IF NECESSARY**

Lengthen or Shorten at adjustment lines (==) or where indicated on pattern. If substantial length is added, you may need to purchase additional fabric.

**TO SHORTEN:** Crease along adjustment line. Make a fold half the amount needed. Tape in place.

**TO LENGTHEN:** Slash between adjustment lines. Spread amount as needed, keeping edges parallel. Tape over paper.

When Alteration lines are not on tissue, lengthen or shorten at lower edge.

**CUTTING AND MARKING**

**SHRINK FABRIC** if not labeled pre-shrunk. Press.

**CIRCLE LAYOUT** for View, Size, Fabric Width.

Use **WITH NAP** layout for fabrics with one-way designs, nap, pile or surface shading. Because most knits have surface shading, a with nap layout is used.

For **DOUBLE THICKNESS (WITH FOLD)** - fold fabric with right sides together.

**\* DOUBLE THICKNESS (WITHOUT FOLD)** - For fabrics with nap, fold fabric crosswise, right sides together. Mark as shown. Cut along crosswise fold of fabric (A). Turn upper layer 180° so arrows go in same direction and place over lower layer, right sides together (B).

For **SINGLE THICKNESS** - place fabric right side up. (For Fur Pile fabrics, place pile side down.)

★ Cut other pieces first, allowing enough fabric to cut this piece. Open fabric. For "Cut 1" pieces, cut piece once on single layer of fabric with piece face up on right side of fabric.

Pattern may have cutting lines for several sizes. Select the proper cutting line or pattern pieces for your size.

Before **CUTTING** place all pieces on fabric according to layout. **Pin. (Layouts show approximate position of pattern pieces; position may vary according to your pattern size.)** Cut **ACCURATELY**, cutting notches outward.

Before removing pattern, **TRANSFER MARKINGS** and lines of construction to Wrong Side of fabric, using the Pin and Chalk Pencil method or Tracing Paper and Dressmaker Wheel. Markings needed on right side of fabric should be thread traced.

**NOTE:** Broken-line boxes (a! b! c!) in layouts represent pieces cut by measurements provided.

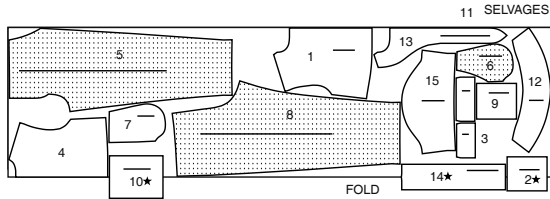
**CUTTING LAYOUTS**

RIGHT SIDE OF PATTERN	WRONG SIDE OF PATTERN	RIGHT SIDE OF FABRIC	WRONG SIDE OF FABRIC
-----------------------	-----------------------	----------------------	----------------------

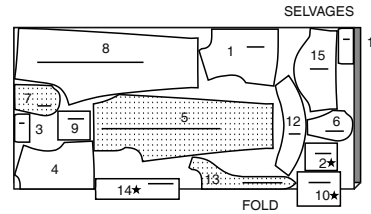
**JUMPSUIT A**

USE PIECES 1 2 3 4 5 6 7 8 9 10 11 12 13 14 15

45" (115CM)  
WITH NAP  
ALL SIZES



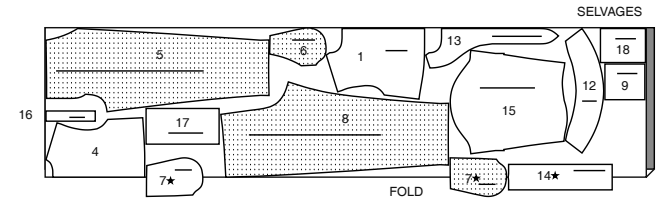
60" (150CM)  
WITH NAP  
ALL SIZES  
CUT ONE OF PIECE 2



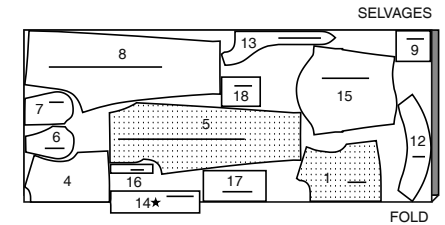
**JUMPSUIT B**

USE PIECES 1 4 5 6 7 8 9 12 13 14 15 16 17 18  
PIECE 9 IS CUT OF ELASTIC

45" (115CM)  
WITH NAP  
ALL SIZES



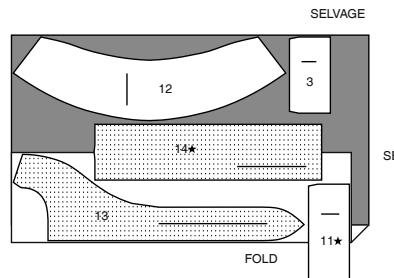
60" (150CM)  
WITH NAP  
ALL SIZES



**INTERFACING A**

USE PIECES 3 11 12 13 14

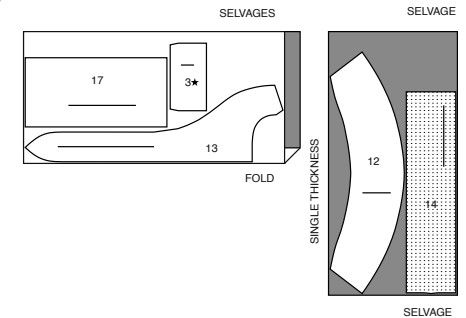
20" (51CM)  
ALL SIZES



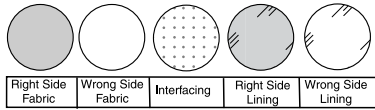
**INTERFACING B**

USE PIECES 3 12 13 14 17

20" (51CM)  
ALL SIZES

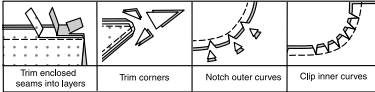


**SEWING INFORMATION**  
FABRIC KEY



**SEAM ALLOWANCES**

Use 5/8" (1.5cm) seam allowances unless otherwise indicated.



**PIN AND FIT**

Pin or baste seams, **RIGHT SIDE TOGETHER**, matching notches.  
Fit garment before stitching major seams.

**PRESS**

Press seam allowances flat; then open unless otherwise stated. Clip where necessary so they lie flat.

**GLOSSARY**

Sewing methods in **BOLD TYPE** have Sewing Tutorial Video available. Scan QR CODE to watch videos:

**EDGESTITCH** - See **Machine Stitches: "how to edgestitch"** video.

**REINFORCE** - See **Machine Stitches: "how to reinforce"** video.

**STAYSTITCH** - See **Machine Stitches: "how to do stay-stitching"** video.

**TOPSTITCH** - See **Machine Stitches: "how to topstitch"** video.

**TRIM** - See **Seams: "How to Sew: Trim, Clip, and Layer Seams"** video.

**UNDERSTITCH** - See **Machine Stitches: "how to understitch"** video.

SEWING TUTORIALS



Build your skills viewing short, easy-to-follow videos at [simplicity.com/sewingtutorials](http://simplicity.com/sewingtutorials)

**PATTERN PIECES WILL BE IDENTIFIED BY NUMBERS THE FIRST TIME THEY ARE USED.**

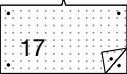
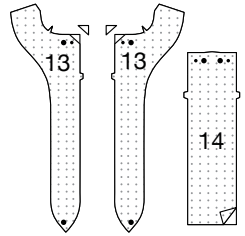
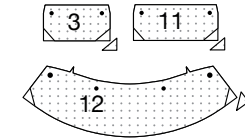
**STITCH SEAMS WITH RIGHT SIDES TOGETHER UNLESS OTHERWISE STATED.**

**JUMPSUIT A, B**

*NOTE: The first view mentioned will be shown, unless otherwise indicated.*

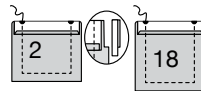
**INTERFACING**

1. Fuse **INTERFACING** to wrong side of each matching **FABRIC** section, following manufacturer's instructions.



**BODICE**

2. Press under 1/4"(6mm) on upper edge of **UPPER POCKET (2 OR 18)**. Turn upper edge to **OUTSIDE** along foldline, forming a facing. Stitch along seamline on raw edges. Trim seam allowance in the facing area to 1/4"(6mm).

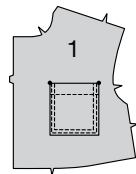


3. Turn corners **RIGHT** side out, turning facing to **WRONG** side. Press, pressing under raw edges along stitching and folding in corners diagonally. Stitch facing close to inner edge.



**VIEW A:**

4. On **OUTSIDE**, pin pocket to left side of **BODICE FRONT (1)**, matching large dots. **EDGESTITCH** and **TOPSTITCH** sides and lower edges of pocket in place.



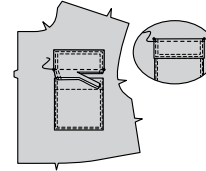
5. With **RIGHT** sides together, stitch one **INTERFACED UPPER FLAP (3)** section to one without interfacing, leaving marked edge open. **TRIM**.



6. Turn flap **RIGHT** side out. Press. **EDGESTITCH** and **TOPSTITCH** finished edges. Baste raw edges together.

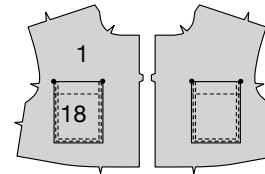


7. On **OUTSIDE**, pin flap to left upper front, placing basting along flap line with seam allowance below the line, matching small dots. Stitch along basting. Trim close to stitching.  
Turn flap down. Press. **TOPSTITCH** upper edge of flap.



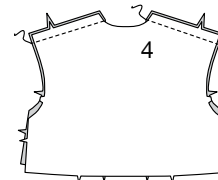
**VIEW B:**

8. On **OUTSIDE**, pin pockets (18) to **BODICE FRONT (1)** sections, matching large dots. **EDGESTITCH** and **TOPSTITCH** sides and lower edges of pockets in place.



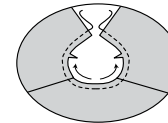
**VIEWS A, B**

9. Stitch **BACK (4)** to fronts at shoulders.

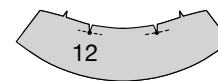


**COLLAR**

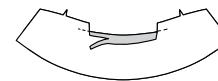
10. **STAYSTITCH** neck edge of bodice in direction of arrows.



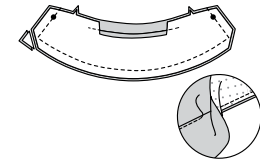
11. **REINFORCE** neck edge of uninterfaced **COLLAR (12)** section through small dots, as shown. Clip to small dots. This will be the upper collar.



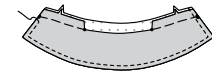
12. Turn under 5/8"(1.5cm) seam allowance between clips. Press. Trim pressed under seam allowance to 3/8"(1cm).



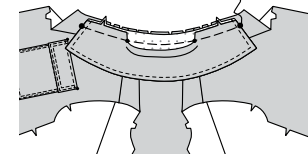
13. Pin upper collar to remaining collar section, **RIGHT** sides together, matching notches and small and large dots, having raw edges even. Stitch, leaving notched edge open. **TRIM**. **UNDERSTITCH** long edge of under collar as far as possible.



14. Turn **RIGHT** side out. Press. Baste raw edges together, keeping pressed edge free. **TOPSTITCH** finished outer edges.



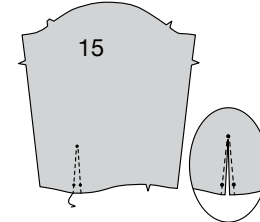
15. With upper collar facing up, on **OUTSIDE**, pin collar to neck edge of garment, matching notches, center backs, large dots, placing small dots at shoulder seams, clipping neck edge of garment where needed. Baste, keeping pressed under edge of upper collar free.



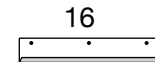
**SLEEVES**

**VIEW B**

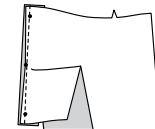
16. **REINFORCE** lower edge of **SLEEVE (15)** along stitching lines. Slash between stitching to upper end.



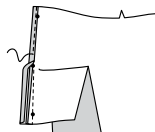
17. Turn in 1/4"(6mm) seam allowance on long edge of **CONTINUOUS LAP (16)** without small dots. Press.



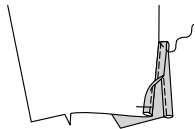
18. With **RIGHT** sides together, pin continuous lap to sleeve, matching small dots. Stitch.



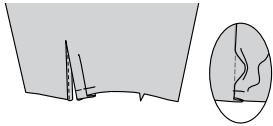
19. Press seam toward continuous lap. Turn pressed edge of continuous lap to **INSIDE** over seam. Stitch pressed edge of lap over seam. Press.



20. Fold continuous lap in half. On INSIDE, stitch diagonally across upper end. Turn front portion of continuous lap to INSIDE; baste in place across lower edge.

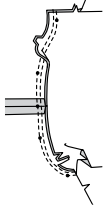


21. To make pleat in sleeve, on OUTSIDE, fold along solid line. Bring fold to broken line. Pin. Baste across lower edge.

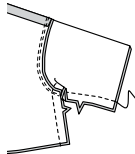


**VIEWS A, B**

22. With RIGHT sides together, pin sleeve to armhole edge with center small dot at shoulder seam, matching notches and remaining small dots. Stitch. Stitch again 1/4"(6mm) away in seam allowances. Press seam toward sleeve. **TRIM.**

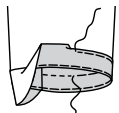


23. Stitch bodice front to bodice back, RIGHT sides together, at entire underarm seam, matching armhole seams.



**VIEW A**

24. Turn up sleeve hem. Baste close to fold. Turn in 1/4"(6mm) on raw edge. Press. **TOPSTITCH** hem along upper basting.

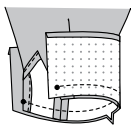


**VIEW B**

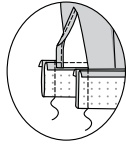
25. Turn in 1/2"(1.3cm) seam allowance on long unnotched edge of CUFF (17). Press. Trim pressed seam to 3/8"(1cm).



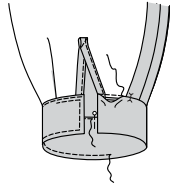
26. Pin cuff to sleeve, matching notches, placing opening edge at small dots. Stitch. **TRIM.** Press seam toward cuff, pressing cuff out.



27. With RIGHT sides together, fold cuff along foldline. Stitch ends. **TRIM.**

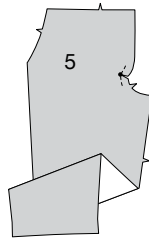


28. Turn cuff. Press. On INSIDE, pin pressed edge of cuff over seam, placing pins on OUTSIDE. On OUTSIDE, **EDGESTITCH** cuff close to seam, catching in pressed edge of cuff on INSIDE. **TOPSTITCH** all edges of cuff, as shown.

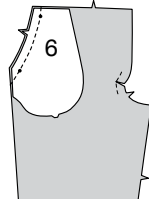


**PANTS**

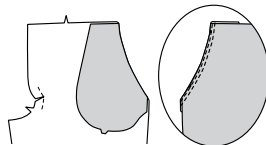
29. **REINFORCE PANTS FRONT** (5) through large dot. Clip to large dot.



30. With RIGHT sides together, pin **POCKET FACING** (6) to pants front, matching small dots. Stitch single notched curved edge. **TRIM.**



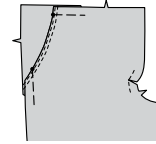
31. Turn pocket facing to INSIDE. Press. On OUTSIDE, **EDGESTITCH** and **TOPSTITCH** finished edge.



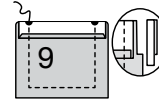
32. On INSIDE, with RIGHT sides together, pin **SIDE FRONT AND POCKET** (7) to pocket facing, having raw edges even. Stitch double notched edge of pocket, keeping pants front free.



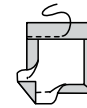
33. On OUTSIDE, lap pants front over side front and pocket section, matching small dots, pin. Baste side and upper edges together.



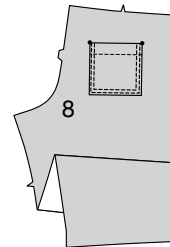
34. Press under 1/4"(6mm) on upper edge of **BACK POCKET** (9). Turn upper edge to OUTSIDE along foldline, forming a facing. Stitch along seamline on raw edges. Trim seam allowance in the facing area to 1/4"(6m).



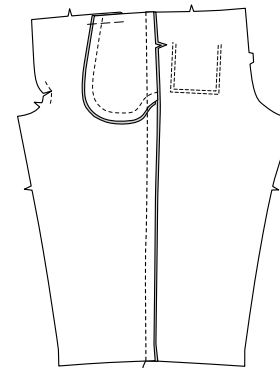
35. Turn corners RIGHT side out, turning facing to WRONG side. Press, pressing under raw edges along stitching and folding in corners diagonally. Stitch facing close to inner edge.



36. On OUTSIDE, pin pocket to **PANTS BACK** (8), matching large dots. **EDGESTITCH** and **TOPSTITCH** sides and lower edges of pocket in place.

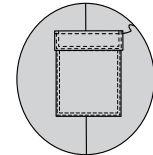
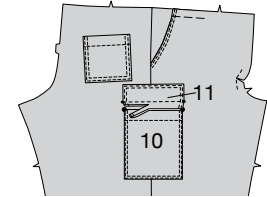


37. Stitch pants front to pants back at sides.



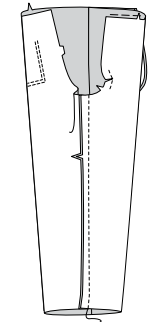
**VIEW A:**

38. Make **LOWER POCKET** (10) in the same manner as back pocket. Pin lower pocket to right pant leg matching large dots, as shown. **EDGESTITCH** and **TOPSTITCH** sides and lower edges. Make **LOWER FLAP** (11) in the same manner as upper flap. Pin upper flap to right pants leg, placing basting along flap line, matching small dots with seam allowances below the line. Stitch. Trim close to stitching. Turn flap down. Press. **TOPSTITCH** upper edge of flap.

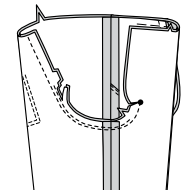


**VIEWS A, B**

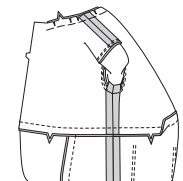
39. Stitch front to back at inner leg edges.



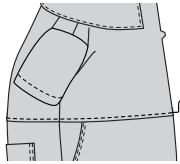
40. With one pant section WRONG side out and one RIGHT side out, insert one pant leg inside the other. RIGHT sides together. Pin matching notches, large dots, and inner leg seams. Stitch from upper edge of pants back to large dot on pants front. To reinforce, stitch again 1/4"(6mm) away in seam allowance between notches. Trim close to second stitching.



41. With RIGHT sides together, pin upper edge of pants to lower edge of bodice, matching centers, notches and seams. Stitch. Press seam toward bodice.

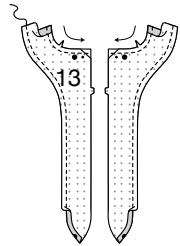


42. **TOPSTITCH** bodice 1/4"(6mm) above seam.

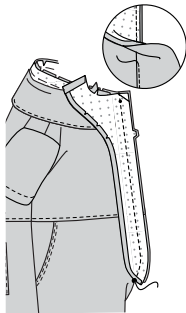


**PLACKET AND FRONT FACING**

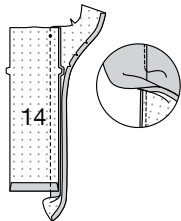
43. **STAYSTITCH** neck edge of **FRONT FACING** (13) in direction of arrows. Stitch along 3/8"(1cm) seamline on inner curved edge of each front facing section. Turn in raw edge along stitching, clipping where needed. Press. Turn in 5/8"(1.5cm) on shoulder edge of front facing. Press.



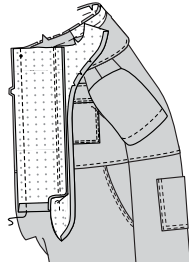
44. With **RIGHT** sides together, pin right front facing to right side of jumpsuit at front edges matching notches and small and large dots. Stitch right front edge to lower large dot, keeping left side of jumpsuit free. **UNDERSTITCH** facing.



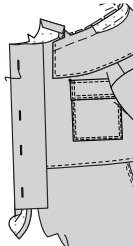
45. Turn under seam allowance on lower edge of **PLACKET** (14). Press. Pin placket to left front facing, **RIGHT** sides together, matching notches. Stitch to end of placket. **UNDERSTITCH** facing stopping 5/8"(1.5cm) above lower edge of placket.



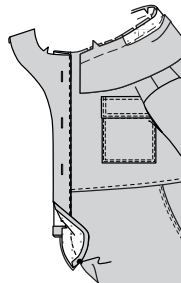
46. Pin remaining long edge of placket to left front opening edge of jumpsuit, **RIGHT** sides together, matching notches. Stitch to end of placket. **TRIM. UNDERSTITCH** placket.



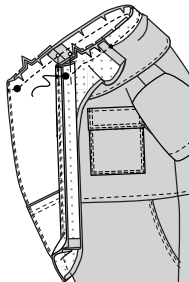
47. Press placket out, pressing seam towards placket. Turn front facing to inside along placket/facing seam. Make buttonholes through placket and facing.



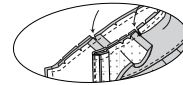
48. Fold placket to **Outside** along foldline on placket, with **RIGHT** sides of placket together. Turn lower end of front facing to outside. With right sides together, pin lower edge of left front facing to jumpsuit, below placket, matching large dots. Stitch from lower edge of placket to large dot.



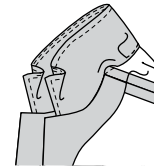
49. Pin neck edge of front facings to neck edge, matching notches, and large and small dots, clipping to staystitching, as necessary. Baste. Turn placket to outside over the front facing; pin. Stitch entire neck edge. **TRIM.**



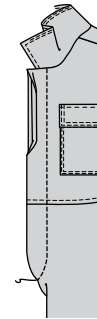
50. Clip seam allowances at end of facing, as shown



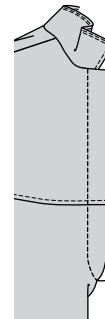
51. Unfold upper layer of placket. Make buttonholes in lower layer of placket and facing at buttonhole markings.



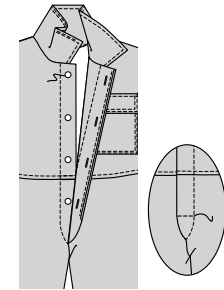
52. Re-fold placket along foldline, having left front edge extending slightly beyond finished edge of placket. Press. Pin in place. On **OUTSIDE**, stitch along vertical stitching line.



53. Pin facing in place on right front. On **OUTSIDE**, stitch along vertical stitching line.

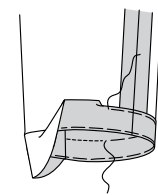


54. On **OUTSIDE**, lap left front over right, matching center fronts. Mark placement for buttons using buttonholes as a guide. Sew buttons to markings. Lap left front over right again. Stitch along horizontal stitching line through all layers.

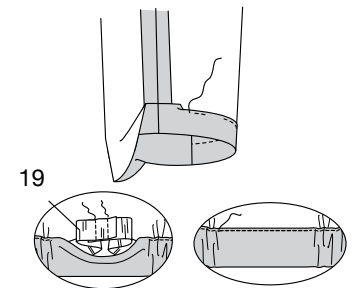


**FINISHING**

55. **View A:** Turn up hem on lower edge of pants. Baste close to fold. Turn in 1/4"(6mm) on raw edge. Press. **TOPSTITCH** hem along upper basting.



56. **View B:** For casing, turn up 1-1/4"(3.2cm) on lower edge of pants, turning in 1/4"(6mm) on raw edge. Press. Stitch, leaving an opening to insert elastic. Cut two pieces of elastic using **ELASTIC GUIDE** (19). Insert elastic through casing. Lap ends; hold with safety pin. Try on garment and adjust if necessary. Stitch ends of elastic securely. Stitch opening in casing, stretching elastic while stitching.



19



# Congrats!

You've completed your sewing adventure

---

**SHARE  
YOUR** LOOK



Post your pattern and tag us  
[@simplicity\\_creative\\_group](#) and [#simplicitypatterns](#)  
for a chance to be featured on our social media.

Look for more PDF patterns at [simplicity.com](#)

Have a question or need help with your sewing project call us at  
1-800-782-0323

**McCall's**  
by **design**<sub>group</sub>

McCall's ©2024 a division of IG Design Group Americas Inc. • Atlanta, GA 30342 USA [www.thedesigngroup.com](#) • All Rights Reserved. [www.mccall.com](#) • Made in the U.S.A. Fabriqué aux États-Unis.  
To be used for individual private home use only and not for commercial or manufacturing purposes. • A usage privé seulement et non à des fins commerciales ou de production en série. • Para uso privado solamente, no se puede utilizar con propósitos de comercialización o de producción en serie.