

McCall's

M8566

Designed and
printed in USA

Average

UNISEX SHIRT IN THREE LENGTHS

Suggested Fabrics: Broadcloth, Cotton Shirting, Lightweight Denim, Pinwale Corduroy.
Interfacing: Lightweight Fusible.**Notions:** A: Eight 1/2" (1.3cm) buttons. B,C: Nine 1/2" (1.3cm) buttons, two 3/8" (1cm) buttons.

Sizes	XS (30-32)	S (34-36)	M (38-40)	L (42-44)	XL (46-48)	XXL (50-52)
European	30-32	34-36	38-40	42-44	46-48	50-52

BODY MEASUREMENTS: Select pattern size based on body measurements

Bust/ Chest	30-32	34-36	38-40	42-44	46-48	50-52	Ins.
Waist	24-26	28-30	32-34	36-39	42-44	46-48	"
Hip	32-34	35-37	39-41	43-45	47-49	51-53	"

Shirt A	45**	2 1/8	2 3/8	2 1/2	2 1/2	2 3/4	Yds.
60**	1 1/8	1 1/8	1 1/8	1 1/8	2	2	"

Interfacing 20" 1 3/8 yds.

Shirt B	45**	2 1/8	2 3/8	2 1/8	2 1/8	2 3/4	Yds.
60**	1 1/8	1 1/8	1 1/8	2	2	2 1/8	"

Interfacing 20" 1 1/2 yds.

Shirt C	45**	2 5/8	2 3/4	2 3/4	2 7/8	2 7/8	Yds.
60**	2	2 1/8	2 1/8	2 1/8	2 1/4	2 1/4	"

Interfacing 20" 1 3/8 yds.

FINISHED GARMENT MEASUREMENTS (Includes Design and Wearing Ease)

A,B,C Bust/Chest	39	43	47	51	55	59	Ins.
A,B,C Waist	38 1/2	42 1/2	46 1/2	50 1/2	54 1/2	58 1/2	"

Finished back length from base of neck

Shirt A	19 1/2	20	20 1/2	21	21 1/2	22	Ins.
Shirt B	22	22 1/2	23	23 1/2	24	24 1/2	"
Shirt C	25	25 1/2	26	26 1/2	27	27 1/2	"

*with nap **without nap

Moins Facile

CHEMISE UNISEXE EN TROIS LONGUEURS

Tissus Conseillés: Broadcloth, Shirting de coton, Denim Léger, Velours Milleraies. **Entoilage:** Thermocoillant léger.**Mercerie:** A: 8 boutons de 1.3cm. B,C: 9 boutons de 1.3cm, 2 boutons de 1cm.

Tailles	TP/XS (30-32)	P/S (34-36)	M (38-40)	G/L (42-44)	TG/XL (46-48)	TTG/XXL (50-52)
Françaises	32-34	36-38	40-42	44-46	48-50	52-54
Européen	30-32	34-36	38-40	42-44	46-48	50-52

MESURES DU CORPS: Choisissez la taille du patron basée sur les mesures du corps

Poitrine	76-81	87-92	97-102	107-112	117-122	127-132	cm
Taille	61-66	71-76	81-87	92-99	107-112	117-122	"
Hanches	81-87	89-94	99-104	109-115	119-124	128-135	"

Chemise A	115cm*	1.9	2.2	2.3	2.3	2.4	m
150cm*	1.7	1.7	1.7	1.7	1.8	1.8	"

Entoilage 51cm 1.3m

Chemise B	115cm*	2.3	2.3	2.4	2.4	2.5	m
150cm*	1.7	1.7	1.7	1.8	1.8	1.9	"

Entoilage 51cm 1.4m

Chemise C	115cm*	2.4	2.4	2.5	2.6	2.6	m
150cm*	1.8	1.9	1.9	1.9	2.1	2.1	"

Entoilage 51cm 1.4m

MESURES DES VÊTEMENTS FINI (Motif et aisance de port compris)

A,B,C Poitrine	99	109	119	130	140	150	cm
A,B,C Taille	98	108	118	128	138	149	"

Longueur finie – dos, votre nuque à l'ourlet

Chemise A	50	51	52	53	55	56	cm
Chemise B	56	57	58	60	61	62	"
Chemise C	64	65	66	67	69	70	"

*avec sens **sans sens



A



B

A
B

C

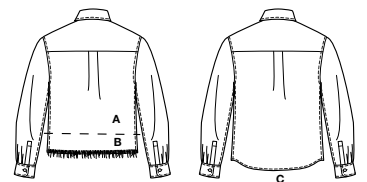
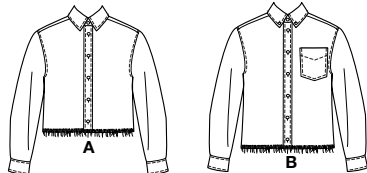
M8566

Page 1 of 4

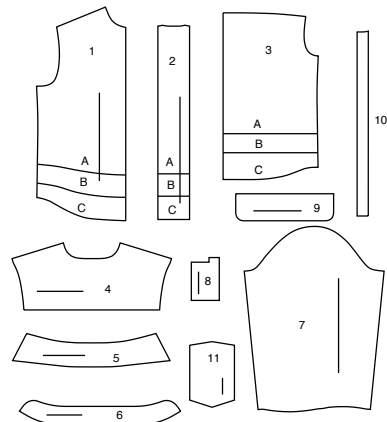
McCall's®

English

1-800-782-0323

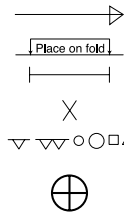


11 PATTERN PIECES



- 1 FRONT - A,B,C
 2 FRONT BAND - A,B,C
 3 BACK - A,B,C
 4 BACK YOKE - A,B,C
 5 COLLAR - A,B,C
 6 COLLAR BAND - A,B,C
 7 SLEEVE - A,B,C
 8 PLACKET - A,B,C
 9 CUFF - A,B,C
 10 GUIDE FOR BUTTONHOLES - A,B,C
 11 POCKET - B,C

PATTERN MARKINGS



GRAINLINE: Place on straight grain of fabric, parallel to selvage or fold.

FOLDLINE: Place line on fold of fabric.

BUTTONHOLE MARKING: Indicates exact length and placement of buttonholes.

BUTTON MARKING: Indicates button placement.

NOTCHES AND SYMBOLS: For matching seams and construction details.

Indicates the Bustline, Waistline, Hip and/or Biceps. Measurements refer to circumference of Finished Garment (Body Measurement + Wearing Ease + Design Ease). Adjust pattern if necessary. The measurement excludes pleats, tucks, darts and seam allowances.

SEAM ALLOWANCE: 5/8" (1.5cm) included unless otherwise indicated, but not printed on tissue.

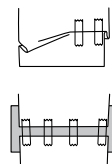
ADJUST IF NECESSARY

Lengthen or Shorten at adjustment lines (==) or where indicated on pattern. If substantial length is added, you may need to purchase additional fabric.

TO SHORTEN: Crease along adjustment line. Make a fold half the amount needed. Tape in place.

TO LENGTHEN: Slash between adjustment lines. Spread amount as needed, keeping edges parallel. Tape over paper.

When Alteration lines are not on tissue, lengthen or shorten at lower edge.



CUTTING AND MARKING

SHRINK FABRIC if not labeled pre-shrunk. Press.

CIRCLE LAYOUT for View, Size, Fabric Width.

Use **WITH NAP** layout for fabrics with one-way designs, nap, pile or surface shading. Because most knits have surface shading, a with nap layout is used.

For **DOUBLE THICKNESS (WITH FOLD)** - fold fabric with right sides together.

*** DOUBLE THICKNESS (WITHOUT FOLD)** - For fabrics with nap, fold fabric crosswise, right sides together. Mark as shown. Cut along crosswise fold of fabric (A). Turn upper layer 180° so arrows go in same direction and place over lower layer, right sides together (B).

For **SINGLE THICKNESS** - place fabric right side up. (For Fur Pile fabrics, place pile side down.)

★ Cut other pieces first, allowing enough fabric to cut this piece. Open fabric. For "Cut 1" pieces, cut piece once on single layer of fabric with piece face up on right side of fabric.

Pattern may have cutting lines for several sizes. Select the proper cutting line or pattern pieces for your size.

Before **CUTTING** place all pieces on fabric according to layout. Pin. (Layouts show approximate position of pattern pieces; position may vary according to your pattern size.) Cut **ACCURATELY**, cutting notches outward.

Before removing pattern, **TRANSFER MARKINGS** and lines of construction to Wrong Side of fabric, using the Pin and Chalk Pencil method or Tracing Paper and Dressmaker Wheel. Markings needed on right side of fabric should be thread traced.

NOTE: Broken-line boxes (a! b! c!) in layouts represent pieces cut by measurements provided.

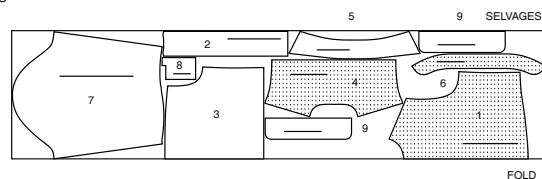
CUTTING LAYOUTS

RIGHT SIDE OF PATTERN	WRONG SIDE OF PATTERN	RIGHT SIDE OF FABRIC	WRONG SIDE OF FABRIC

JACKET A

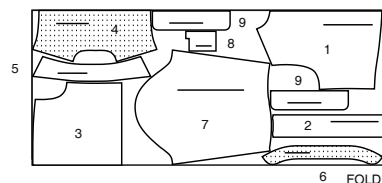
USE PIECES: 1 2 3 4 5 6 7 8 9

45" (115 CM)
 WITH NAP
 ALL SIZES



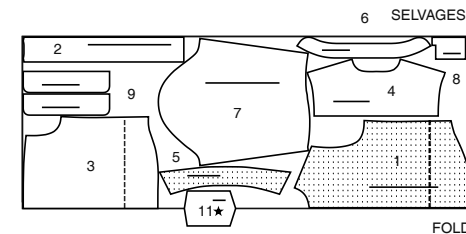
SELVAGES

60" (150 CM)
 WITH NAP
 ALL SIZES



FOLD

60" (150 CM)
 WITH NAP
 ALL SIZES



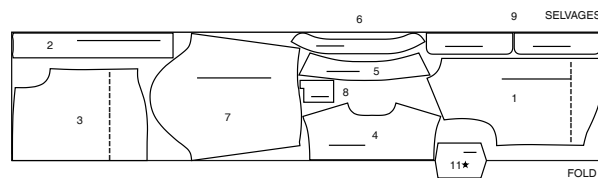
FOLD

SHIRT B,C

USE PIECES: 1 2 3 4 5 6 7 8 9 11

NOTE: DASHED LINE SHOWN ON PATTERN PIECES IN CUTTING LAYOUTS INDICATES CUTTING LINE FOR SHORTER LENGTH

45" (115 CM)
 WITH NAP
 ALL SIZES

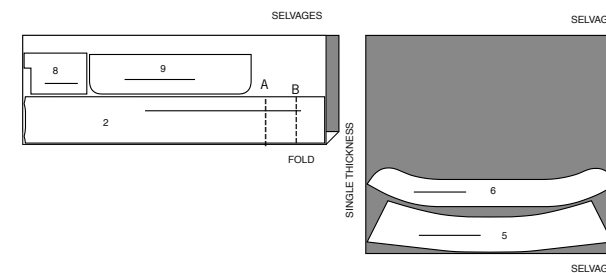


FOLD

INTERFACING A,B,C

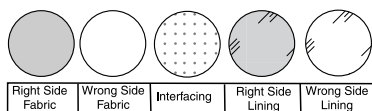
USE PIECES: 2 5 6 8 9

20" (52 CM)
 ALL SIZES



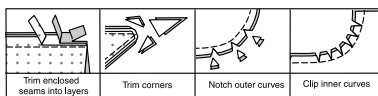
SEWING INFORMATION

FABRIC KEY



SEAM ALLOWANCES

Use 5/8" (1.5cm) seam allowances unless otherwise indicated.



PIN AND FIT

Pin or baste seams, RIGHT SIDE TOGETHER, matching notches. Fit garment before stitching major seams.

PRESS

Press seam allowances flat; then open unless otherwise stated. Clip where necessary so they lie flat.

GLOSSARY

Read **General Directions** before you begin.

Sewing methods in **BOLD TYPE** have Sewing Tutorial Video available. Scan **QR CODE** to watch videos:

EDGESTITCH – See **Machine Stitches**: “how to sew an edgestitch” video.

NARROW HEM – See **Hems**: “sewing narrow hems” video.

SET IN SLEEVE – See **Armholes/Sleeves**: “sewing a set in sleeve” video.

STAYSTITCH – See **Machine Stitches**: “how to do stay stitching” video.

TOPSTITCH – See **Machine Stitches**: “how to topstitch” video.

TRIM SEAM – See **Seams**: “how to trim, clip and layer seams” video.

SEWING TUTORIALS



Build your skills viewing short, easy-to-follow videos at simplicity.com/sewingtutorials

PATTERN PIECES WILL BE IDENTIFIED BY NUMBERS THE FIRST TIME THEY ARE USED.

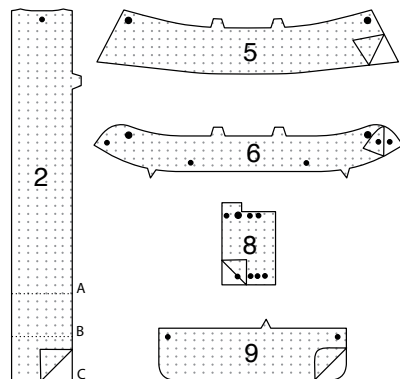
STITCH 5/8" (1.5CM) SEAMS WITH RIGHT SIDES TOGETHER UNLESS OTHERWISE STATED.

SHIRT A, B, C

INTERFACING

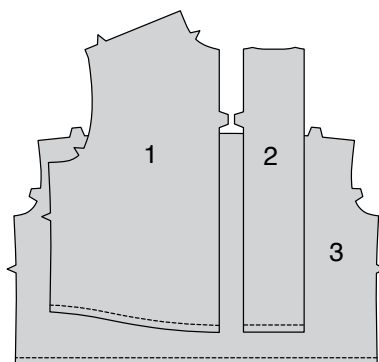
NOTE: For Views A and B – Trim 1/2" (1.3cm) from lower edge of **FRONT BAND (2)** interfacing before fusing to fabric.

1. Pin interfacing to **WRONG** side of **FRONT BAND (2)**, **COLLAR (5)**, **COLLAR BAND (6)**, **PLACKET (8)**, and **CUFF (9)**. Fuse in place following manufacturer's directions.

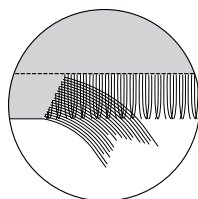


FRINGE DETAIL A, B

2. To make self-fringe on lower edge of **FRONT (1)**, **FRONT BAND (2)**, and **BACK (3)** sections, machine-stitch 1/2" (1.3cm) from lower edges.

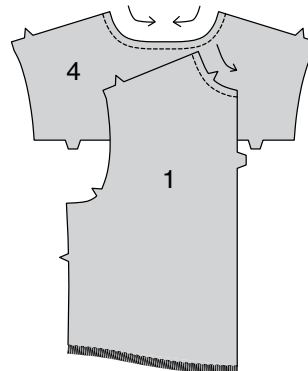


3. Make small cuts across the lower edge every 2" to 3" (5-7cm), being careful not to cut through stitching. Then fringe in small sections, using a straight pin or a needle to help pull out the little clumps of thread.



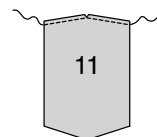
FRONT AND BACK YOKE

4. STAYSTITCH **FRONT (1)** and **BACK YOKE (4)** sections by stitching 1/2" (1.3cm) from cut edge in direction of arrows. This stitching stays in permanently to prevent stretching on curved edges. (Shown only in the first illustration.)

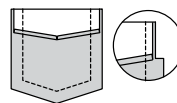


POCKET B, C

5. To reinforce upper edge of **POCKET (11)**, stitch along 1/4" (6mm) seamline. Clip seam allowance at center point, being careful not to clip through stitching.



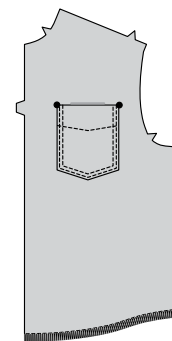
6. Press under upper edge along stitching. Turn upper edge of pocket to **OUTSIDE** along foldline, forming facing. Stitch along seamline on raw edges. Trim seam allowance in the facing area to 1/4" (6mm).



7. Turn corners **RIGHT** side out, turning facing to the **WRONG** side; press, pressing under raw edges along stitching. Stitch facing close to inner pressed edge.

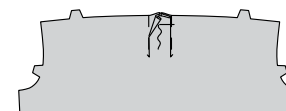


8. On **OUTSIDE**, pin pocket to **LEFT** front, matching large dots. **EDGESTITCH** close to side and lower edges and **TOPSTITCH** pocket 1/4" (6mm) away from first stitching.

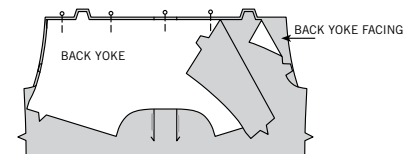


CONTINUE AS FOLLOWS FOR ALL VIEWS

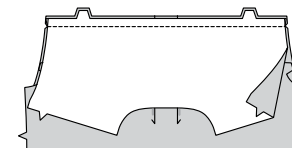
9. To make pleats on **BACK (3)**, on **OUTSIDE**, fold along solid lines. Bring folds to broken lines; pin. Baste across raw edge.



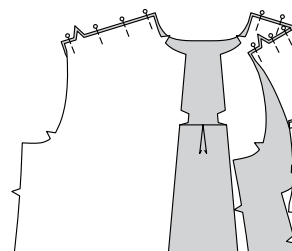
10. With back sandwiched between back yoke and back yoke facing, pin double notched edges together, having **RIGHT** sides of back and back yoke together.



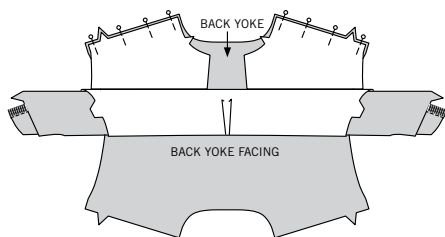
11. Stitch seam through all thicknesses. **TRIM SEAM.**



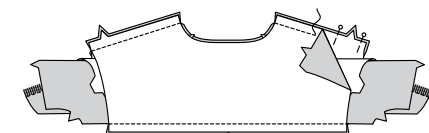
12. Press yoke up, leaving yoke facing down toward back, as shown. With **RIGHT** sides together, pin yoke to fronts at shoulder edges.



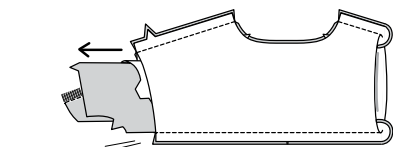
13. Roll back and front sections together toward yoke, as shown.



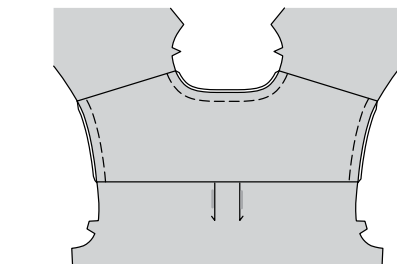
14. With RIGHT side of yoke facing against the WRONG side of fronts, pin shoulder edges together. (Rolled front and back sections are between yoke layers.) Stitch seams through all thicknesses, being careful not to catch in rolled edges of shirt.



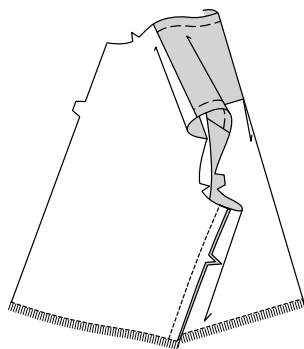
15. Reach in and pull out rolled shirt through one armhole opening, turning top RIGHT side out. Press seams toward yokes.



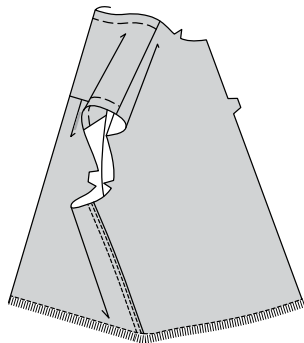
16. Machine-baste neck and armhole edges together.



17. Stitch front to back at side edges. Press seams toward back.

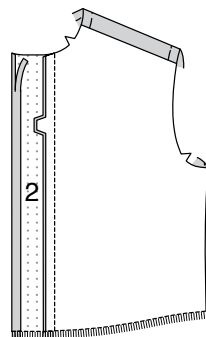


18. On OUTSIDE, **EDGE**STITCH back close to side seam and **TOP**STITCH back 1/4" (6mm) away from first stitching.

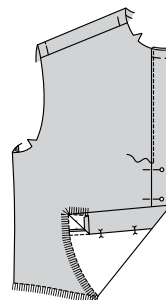


FRONT BAND A, B

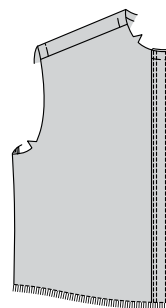
19. Press under a scant 5/8" (1.5cm) on unnotched edge of **FRONT BAND (2)**. Trim to 1/4" (6mm). On OUTSIDE, pin band to front, matching notches. Stitch. **TRIM SEAM**. Press seam toward band, pressing band out.



20. Turn band to INSIDE along foldline; press. Pin inner pressed edge of band over seam, placing pins on OUTSIDE. On OUTSIDE, **EDGE**STITCH band close to seam, catching in pressed edge of band facing on the INSIDE.

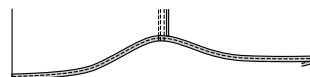


21. On OUTSIDE, **EDGE**STITCH band close to front fold and **TOP**STITCH band 1/4" (6mm) away from inner and outer edge stitching. Baste band across upper edge.



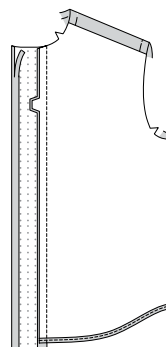
FRONT BAND AND HEM C

22. Press up 5/8" (1.5cm) hem allowance on lower edge of shirt. To form a **NARROW HEM**, tuck under raw edge to meet crease. Press. Stitch hem in place close to inner pressed edge.

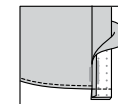


23. Press under a scant 5/8" (1.5cm) on unnotched edge of **FRONT BAND (2)**. Trim to 1/4" (6mm).

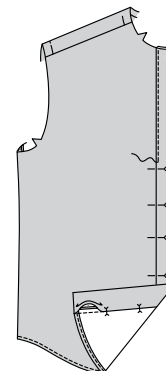
On OUTSIDE, pin band to front, matching notches. Stitch. **TRIM SEAM**. Press seam toward band, pressing band out.



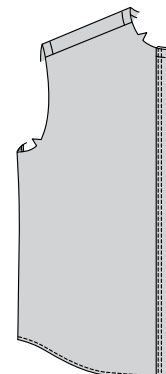
24. Fold lower end of band along foldline with RIGHT sides together. Stitch across lower edge along seamline. **TRIM SEAM**.



25. Turn band to INSIDE along foldline; press. Pin inner pressed edge of band over seam, placing pins on OUTSIDE. On OUTSIDE, **EDGE**STITCH band close to seam, catching in pressed edge of band facing on the INSIDE.



26. On OUTSIDE, **EDGE**STITCH band close to front fold and **TOP**STITCH band 1/4" (6mm) away from inner and outer edgestitching. Baste band across upper edge.

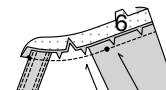


COLLAR BAND AND COLLAR

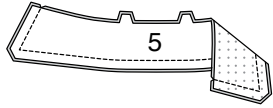
27. Clip shirt neck edge to staystitching.

With RIGHT sides together, pin single notched edge of **COLLAR BAND (6)** to neck edge, matching centers back and small dots. (Collar band extends 5/8" (1.5cm) beyond front opening edges.) Stitch neck edge. **TRIM SEAM**.

Press band out; press seam toward band.

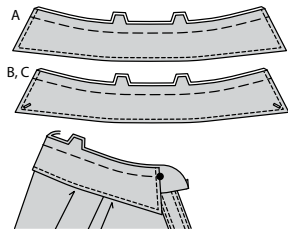


28. With **RIGHT** sides together and raw edges even, stitch facing to collar, leaving notched edges open. **TRIM SEAM.**



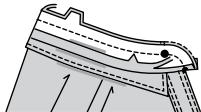
29. Turn collar; press. **TOPSTITCH** finished edge of collar. For **Views B and C**, make buttonholes at markings.

Machine-baste raw edges together. With **RIGHT** sides together and raw edges even, pin collar (facing side) to collar band, matching centers back and double notches, placing ends at large dots. Machine-baste.

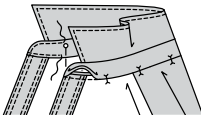


30. Press under 5/8" (1.5cm) on single notched edge of collar band facing; trim to 1/4" (6mm).

With **RIGHT** sides together, pin collar band facing to collar band (over collar), matching centers. Stitch front and double notched edge. **TRIM SEAM.**



31. Turn band facing to **INSIDE**; press. Pin pressed edge of facing over seam, placing pins on **OUTSIDE**. On **OUTSIDE**, **EDGE**STITCH close to all edges of collar band, catching in pressed edge of facing on **INSIDE**.



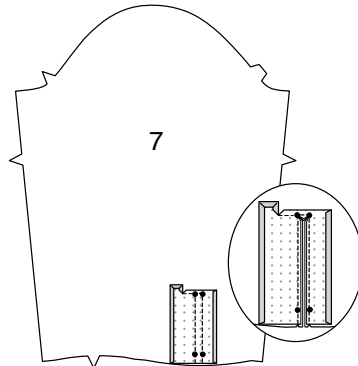
SLEEVE

32. To reinforce inner corner of **PLACKET** (8) at large dot, stitch along 1/4" (6mm) seam allowance for 1/2" (1.3cm) each side of large dot, as shown. Clip inner corner to stitching at dot.

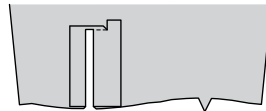


33. Turn under 1/4" (6mm) seam allowance on side and upper end of placket, folding in fullness at corners. Press.

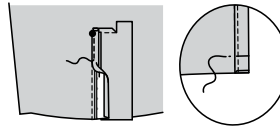
Pin **RIGHT** side of placket to **WRONG** side of **SLEEVE** (7), matching stitching lines. Stitch along stitching lines, pivoting at small dots. Slash between stitching, clipping diagonally to small dots.



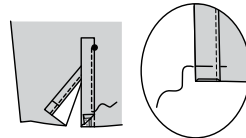
34. Turn placket to **OUTSIDE**. Press seams toward placket and triangular end up.



35. Fold shorter side of placket along foldline, placing pressed edge over seam. Stitch close to edge, from small dot to lower edge. Baste across lower edge.

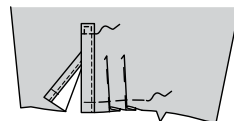


36. Fold remaining side of placket along foldline, placing pressed edge over seam. Stitch close to edge, from small dot to lower edge. Baste across lower edge.

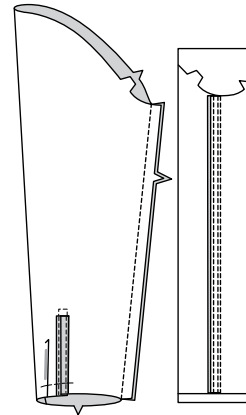


37. Pin upper edge of placket to sleeve. Stitch close to edges and along stitching line, as shown.

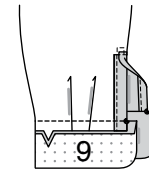
To make pleats at lower edge of sleeve, on **OUTSIDE**, fold along solid lines. Bring fold to broken lines. Baste across lower edge.



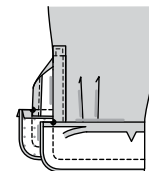
38. Stitch underarm edges of sleeve. Press seam toward back. **EDGE**STITCH back of sleeve close to seamline, and **TOP**STITCH back 1/4" (6mm) from first stitching.



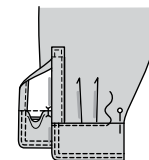
39. With **RIGHT** sides together, pin sleeve to **CUFF** (9), placing opening edges at small dots. Baste. Stitch. **TRIM SEAM.** Press seam toward cuff, pressing cuff out.



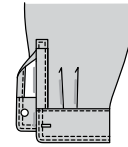
40. Press under 5/8" (1.5cm) seam allowance on notched edge of cuff facing. Trim to 1/4" (6mm). On **OUTSIDE**, pin facing to cuff, matching small dots. Stitch lower edge and ends.



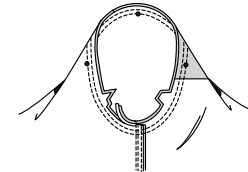
41. Turn cuff; press. On **INSIDE**, pin pressed edge of cuff facing over seam, placing pins on **OUTSIDE**. On **OUTSIDE**, **EDGE**STITCH cuff close to seam, catching in pressed edge of cuff facing on **INSIDE**. **EDGE**STITCH remaining edges of cuff and **TOP**STITCH cuff 1/4" (6mm) from edgestitching.



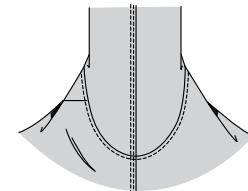
42. Make buttonhole on cuff at marking. Sew 1/2" (1.3cm) button to cuff at small dot.



43. To **SET IN SLEEVE**, turn sleeve **RIGHT** side out. Hold shirt **WRONG** side out with armhole toward you. With **RIGHT** sides together, pin sleeve to armhole edge matching seams, small dots, and notches. Baste. Stitch. Stitch again 1/8" (3mm) from first stitching. Trim seam below notches close to stitching. Press only the seam allowance, shrinking out fullness.



44. On **OUTSIDE**, **TOP**STITCH front, back, and yoke 1/4" (6mm) from armhole seam.

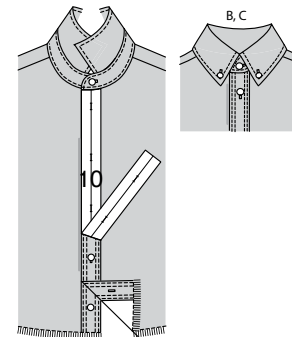


FINISHING

45. Pin **GUIDE FOR BUTTONHOLES** (10) to upper edge of **LEFT** front, matching centers. Transfer markings. Make buttonholes. Lap **LEFT** front over **RIGHT** front, matching centers. Sew 1/2" (1.3cm) buttons to **RIGHT** front under buttonholes.

Make buttonhole in collar band. Sew 1/2" (1.3cm) button to collar band at small dot.

For **Views B and C**, sew 3/8" (1cm) buttons to front at small dots.





Congrats!

You've completed your sewing adventure

SHARE YOUR LOOK



Post your pattern and tag us
[@simplicity_creative_group](#) and [#simplicitypatterns](#)
for a chance to be featured on our social media.

Look for more PDF patterns at [simplicity.com](https://www.simplicity.com)

Have a question or need help with your sewing project call us at
1-800-782-0323

McCall's
by **design**_{group}

McCall's ©2024 a division of IG Design Group Americas Inc. • Atlanta, GA 30342 USA www.thedesigngroup.com • All Rights Reserved. www.mccall.com • Made in the U.S.A. Fabriqué aux États-Unis.

To be used for individual private home use only and not for commercial or manufacturing purposes. • A usage privé seulement et non à des fins commerciales ou de production en série. • Para uso privado solamente, no se puede utilizar con propósitos de comercialización o de producción en serie.