

McCall's

M8563



Designed and printed in USA

Average

MISSES' LOUNGE TOPS, SHORTS AND PANTS

Suggested Fabrics: Challis, Cotton Blends, Cotton Lawn, Gauze. **Interfacing A,B:** Lightweight Fusible.

Notions: A: One pkg. of 1/2" (1.3cm) single fold bias tape. B: Two pkgs. of 1/2" (1.3cm) single fold bias tape, 3 1/2 yds. (3.1m) of 3/8" (1cm) elastic, five 3/8" (1cm) shank buttons. C,D: 3 1/4 yds. (3.8m) of 1/2" (1.3cm) elastic.

Sizes	XS (4-6)	S (8-10)	M (12-14)	L (16-18)	XL (20-22)	XXL (24-26)		
European	30-32	34-36	38-40	42-44	46-48	50-52		
BODY MEASUREMENTS: Select pattern size based on body measurements								
Bust	29 1/2-30 1/2	31 1/2-32 1/2	34-36	38-40	42-44	46-48	Ins.	"
Waist	22-23	24-25	26 1/2-28	30-32	34-37	39-41 1/2	"	"
Hip-9" below waist	31 1/2-32 1/2	33 1/2-34 1/2	36-38	40-42	44-46	48-50	"	"
Back-neck to waist	15 1/4-15 1/2	15 3/4-16	16 1/4-16 1/2	16 3/4-17	17 1/4-17 1/2	17 3/4-18	"	"
FINISHED GARMENT MEASUREMENTS (Includes Design and Wearing Ease)								
A,B Bust	37 1/2	39 1/2	43	47	51	55	Ins.	"
C,D Hip	42 1/2	44 1/2	48	52	56	60	"	"
Width, lower edge								
Top A	46 1/4	48 1/4	51 3/4	55 3/4	59 3/4	63 3/4	Ins.	"
Top B	47 1/4	49 1/4	52 3/4	56 3/4	60 3/4	64 3/4	"	"
Width, each leg								
Shorts C	27	28 1/2	30 1/2	33	35 1/2	38	Ins.	"
Pants D	27 1/4	28 1/2	30 1/2	32 3/4	35	37 1/4	"	"
Finished back length from base of neck								
Top A	16 1/2	17	17 1/2	18	18 1/2	19	Ins.	"
Top B	18 1/2	19	19 1/2	20	20 1/2	21	"	"
Finished side length from waist								
Shorts C (sits 1" below waist)	14 1/4	14 3/4	15 1/4	15 3/4	16 1/4	16 3/4	Ins.	"
Pants D (sits 1" below waist)	41 1/2	42	42 1/2	43	43 1/2	44	Ins.	"

*with nap **without nap

Moins Facile

HAUTS, SHORT ET PANTALON DE DETENTE POUR JEUNES FEMMES

Tissus Conseillés: Challis, Cotonnades, Linon de coton, Gaze. **Entoilage A,B:** Thermo collant léger.

Merci: A: 1 paquet de ruban de biais simple de 1.3cm. B: 2 paquets de ruban de biais simple de 1.3cm, 3.1m d'élastique de 1cm, 5 boutons de tige de 1cm. C,D: 3.8m d'élastique de 1.3cm.

Tailles	TP/XS (4-6)	P/S (8-10)	M/M (12-14)	G/L (16-18)	TG/XL (20-22)	TTG/XXL (24-26)		
Françaises	32-34	36-38	40-42	44-46	48-50	52-54		
Européen	30-32	34-36	38-40	42-44	46-48	50-52		
MESURES DU CORPS: Choisissez la taille du patron basée sur les mesures du corps								
Poitrine	75-77	80-83	87-92	97-102	107-112	117-122	cm	"
Taille	56-58	61-64	67-71	76-81	87-94	99-105	"	"
Hanches (23cm au-dessous de la taille)								
Dos du cou à la taille	80-83	85-88	92-97	102-107	112-117	122-127	cm	"
Haut A	39-39.5	40-40.5	41.5-42	42.5-43	44-44.5	45-45.5	"	"
Entoilage	51cm	0.6	0.6	0.7	0.7	0.7	"	"
MESURES DES VÊTEMENTS FINI (Motif et aisance de port compris)								
A,B Poitrine	95	100	109	119	130	140	cm	"
C,D Hanches	108	113	122	132	142	152	"	"
Largeur à l'ourlet								
Haut A	117	123	131	142	152	162	cm	"
Haut B	120	125	134	144	154	164	"	"
Largeur, chaque jambe								
Short C	69	72	77	84	90	97	cm	"
Pantal D	69	72	77	83	89	95	"	"
Longueur finie – dos, votre nuque à l'ourlet								
Haut A	42	43	44	46	47	48	cm	"
Haut B	47	48	50	51	52	53	"	"
Longueur finie – côté, taille à l'ourlet								
Short C (repose 2.5cm dessous de la taille)	36	37	39	40	41	43	cm	"
Pantal D (repose 2.5cm dessous de la taille)	105	107	108	109	110	112	cm	"

*avec sens **sans sens



A



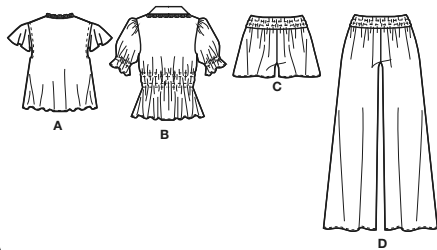
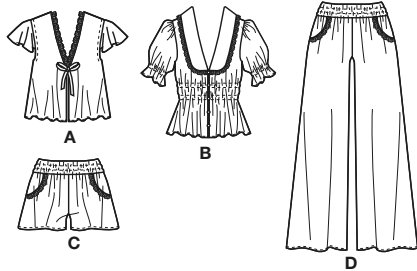
B



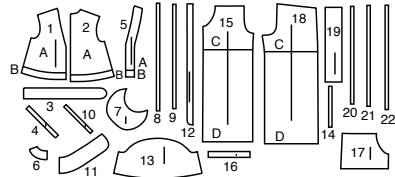
C



D



22 PATTERN PIECES



- 1 Front-A,B
- 2 Back-A,B
- 3 Ruffle-A
- 4 Tie End-A
- 5 Front Facing-A,B
- 6 Back Facing-A,B
- 7 Armhole Flounce-A
- 8 Elastic Guide Upper-B
- 9 Elastic Guide Lower-B
- 10 Loop-B
- 11 Collar-B
- 12 Ruffle-B
- 13 Sleeve-B
- 14 Guide for Elastic-B
- 15 Front-C,D
- 16 Ruffle-C,D
- 17 Side Front and Pocket-C,D
- 18 Back-C,D
- 19 Casing-C,D
- 20 Elastic Guide Upper-C,D
- 21 Elastic Guide Middle-C,D
- 22 Elastic Guide Lower-C,D

PATTERN MARKINGS

- GRAINLINE:** Place on straight grain of fabric, parallel to selvage or fold.
- FOLDLINE:** Place line on fold of fabric.
- BUTTONHOLE MARKING:** Indicates exact length and placement of buttonholes.
- BUTTON MARKING:** Indicates button placement.
- NOTCHES AND SYMBOLS:** For matching seams and construction details.
- Indicates the Bustline, Waistline, Hip and/or Biceps. Measurements refer to circumference of Finished Garment (Body Measurement + Wearing Ease + Design Ease). Adjust pattern if necessary. The measurement excludes pleats, tucks, darts and seam allowances.
- SEAM ALLOWANCE:** 5/8" (1.5cm) included unless otherwise indicated, but not printed on tissue.

ADJUST IF NECESSARY

- Lengthen or Shorten at adjustment lines (==) or where indicated on pattern. If substantial length is added, you may need to purchase additional fabric.
 - TO SHORTEN:** Crease along adjustment line. Make a fold half the amount needed. Tape in place.
 - TO LENGTHEN:** Slash between adjustment lines. Spread amount as needed, keeping edges parallel. Tape over paper.
- When Alteration lines are not on tissue, lengthen or shorten at lower edge.

CUTTING AND MARKING

- SHRINK FABRIC** if not labeled pre-shrunk. Press.
- CIRCLE LAYOUT** for View, Size, Fabric Width.
- Use **WITH NAP** layout for fabrics with one-way designs, nap, pile or surface shading. Because most knits have surface shading, a with nap layout is used.
- For **DOUBLE THICKNESS (WITH FOLD)** - fold fabric with right sides together.
- * DOUBLE THICKNESS (WITHOUT FOLD)** - For fabrics with nap, fold fabric crosswise, right sides together. Mark as shown. Cut along crosswise fold of fabric (A). Turn upper layer 180° so arrows go in same direction and place over lower layer, right sides together (B).
- For **SINGLE THICKNESS** - place fabric right side up. (For Fur Pile fabrics, place pile side down.)
- ★ Cut other pieces first, allowing enough fabric to cut this piece. Open fabric. For "Cut 1" pieces, cut piece once on single layer of fabric with piece face up on right side of fabric.
- Pattern may have cutting lines for several sizes. Select the proper cutting line or pattern pieces for your size.
- Before **CUTTING** place all pieces on fabric according to layout. Pin. (**Layouts show approximate position of pattern pieces; position may vary according to your pattern size.**) Cut **ACCURATELY**, cutting notches outward.
- Before removing pattern, **TRANSFER MARKINGS** and lines of construction to Wrong Side of fabric, using the Pin and Chalk Pencil method or Tracing Paper and Dressmaker Wheel. Markings needed on right side of fabric should be thread traced.
- NOTE:** Broken-line boxes (a! b! c!) in layouts represent pieces cut by measurements provided.

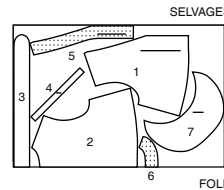
CUTTING LAYOUTS

RIGHT SIDE OF PATTERN	WRONG SIDE OF PATTERN	RIGHT SIDE OF FABRIC	WRONG SIDE OF FABRIC
-----------------------	-----------------------	----------------------	----------------------

TOP A

USE PIECES: 1 2 3 4 5 6 7

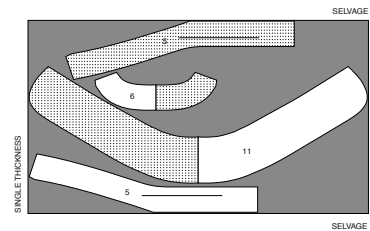
60" (150 CM)
WITH NAP
ALL SIZES



INTERFACING B

USE PIECES: 5 6 11

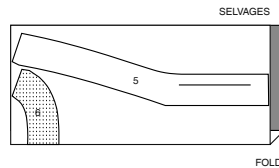
20" (51 CM)
ALL SIZES



INTERFACING A

USE PIECES: 5 6

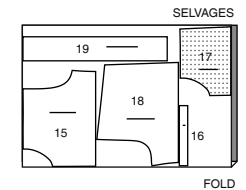
20" (51 CM)
ALL SIZES



SHORTS C

USE PIECES: 15 16 17 18 19

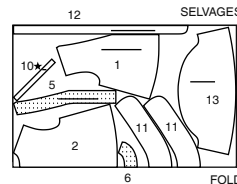
60" (150 CM)
WITH NAP
ALL SIZES



TOP B

USE PIECES: 1 2 5 6 10 11 12 13

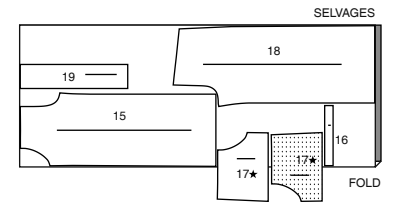
60" (150 CM)
WITH NAP
SIZES XS S



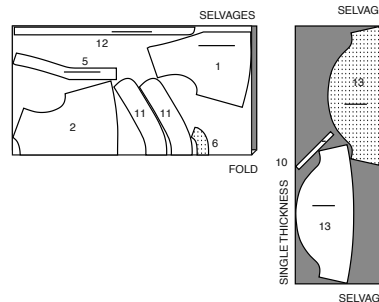
PANTS D

USE PIECES: 15 16 17 18 19

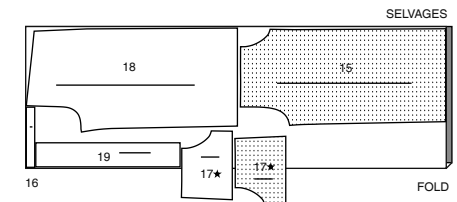
60" (150 CM)
WITH NAP
SIZES XS S



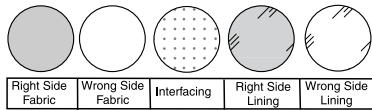
60" (150 CM)
WITH NAP
SIZES M L XL XXL



60" (150 CM)
WITH NAP
SIZES M L XL XXL

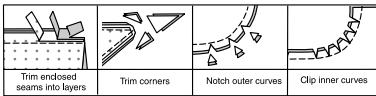


SEWING INFORMATION
FABRIC KEY



SEAM ALLOWANCES

Use 5/8" (1.5cm) seam allowances unless otherwise indicated.



PIN AND FIT

Pin or baste seams, **RIGHT SIDE TOGETHER**, matching notches. Fit garment before stitching major seams.

PRESS

Press seam allowances flat; then open unless otherwise stated. Clip where necessary so they lie flat.

GLOSSARY

Sewing methods in **BOLD TYPE** have Sewing Tutorial Video available. Scan **QR CODE** to watch videos:

GATHER – See **Gathering: "sewing two row gathers"** video.

EDGESTITCH – See **Machine Stitches: "how to sew an edgestitch"** video.

NARROW HEM – See **Hems: "sewing narrow hems"** video.

SLEEVE – See **Armholes/Sleeves: "sewing a set in sleeve"** video.

SLIPSTITCH – See **Hand Stitching: "how to slip stitch"** video.

STAYSTITCH – See **Machine Stitches: "how to do stay stitching"** video.

TOPSTITCH – See **Machine Stitches: "how to topstitch"** video.

TRIM SEAM – See **Seams: "how to trim, clip and layer seams"** video.

UNDERSTITCH – See **Machine Stitches: "how to understitch"** video.

SEWING TUTORIALS



Build your skills viewing short, easy-to-follow videos at simplicity.com/sewingtutorials

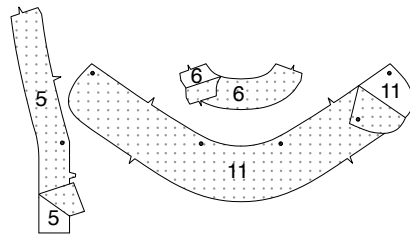
PATTERN PIECES WILL BE IDENTIFIED BY NUMBERS THE FIRST TIME THEY ARE USED.

STITCH 5/8" (1.5CM) SEAMS WITH RIGHT SIDES TOGETHER UNLESS OTHERWISE STATED.

TOP A, B

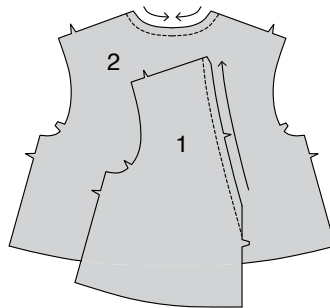
INTERFACING

1. Pin interfacing to **WRONG** side of **FRONT FACING** (5), **BACK FACING** (6), and **COLLAR** (11). Fuse in place following manufacturer's directions.

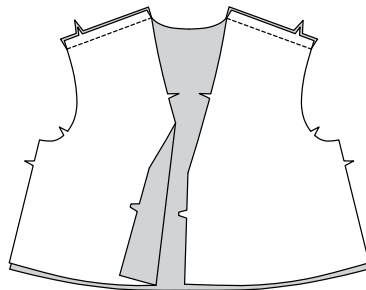


FRONT AND BACK

2. To **STAYSTITCH** neck edge of **FRONT** (1) and **BACK** (2), stitch 1/2" (1.3cm) from cut edge in direction of arrows. This stitching stays in permanently to prevent stretching on curved edges. (Shown only in the first illustration.)

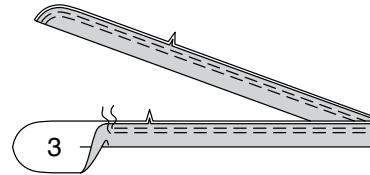


3. Stitch front to back at shoulder edges.



RUFFLE AND TIE A

4. Fold **RUFFLE** (3) in half, lengthwise, with **WRONG** sides together; pin. To **GATHER** notched edge, loosen needle tension slightly. On **OUTSIDE**, stitch 5/8" (1.5cm) from cut edge using a long stitch. Stitch again 1/4" (6mm) from the first stitching within the seam allowance.



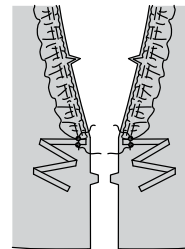
5. On **OUTSIDE**, pin ruffle to neck edge, matching small dots and notches, placing inner small dot at shoulder seam, pulling up gathering stitches to fit. Baste.



6. To make each tie, fold **TIE END** (4) in half, lengthwise, with **RIGHT** sides together. Stitch long edge and unmarked end in a 1/4" (6mm) seam. **TRIM SEAM.**



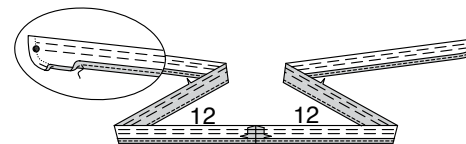
7. Turn tie ends; press. On **OUTSIDE**, pin tie ends to front with raw edges even, matching small dots. Baste.



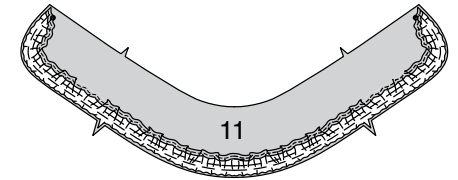
COLLAR B

8. Stitch center back edges of **RUFFLE** (12). Machine-stitch 3/8" (1cm) from unnotched edge. Press up hem along stitching. To form a **NARROW HEM**, tuck under raw edge to meet crease; press. Stitch hem in place close to inner pressed edge.

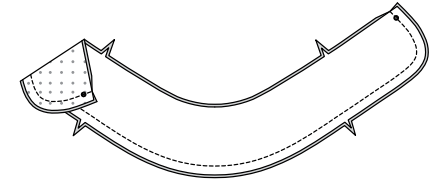
To **GATHER** notched edge between the small dots, loosen needle tension slightly. On **OUTSIDE**, stitch 5/8" (1.5cm) from cut edge using a long stitch. Stitch again 1/4" (6mm) from the first stitching within the seam allowance.



9. With **RIGHT** sides together and raw edges even, pin ruffle to **COLLAR** (11), matching centers, small dots and notches, pulling up gathering stitches to fit. Baste.

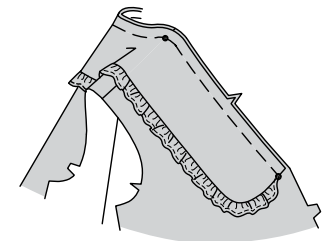
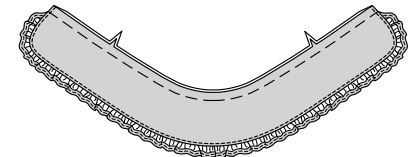


10. With **RIGHT** sides together and raw edges even, pin collar facing to collar, matching small dots and notches. Stitch, leaving neck edge open. **TRIM SEAM.**



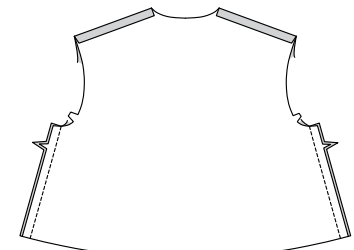
11. UNDERSTITCH the collar facing. Turn collar; press, pressing out the ruffle. Baste raw edges together.

On **OUTSIDE**, pin collar to neck edge, matching small dots and notches, placing inner small dot at shoulder seam. Baste.



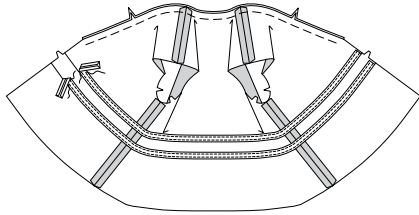
FOR BOTH VIEWS

12. Stitch front to back at side edges.



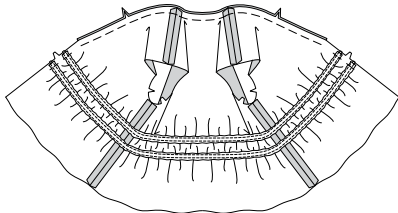
CASINGS AND LOOPS B

13. To make casings for elastic, cut a piece of bias tape the length of each casing line. On **INSIDE**, pin tape to top with lower edge of tape along casing line. **EDGESTITCH** close to long edges of tape.

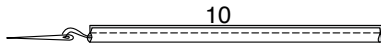


14. Cut a piece of elastic the length of the **ELASTIC GUIDE UPPER (8)**. Thread elastic through upper casing. Stitch along seamline across ends, keeping ends in place, securely. Distribute gathers evenly.

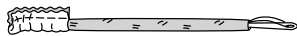
Thread elastic through lower casing in the same manner, using **ELASTIC GUIDE LOWER (9)** to cut length of piece.



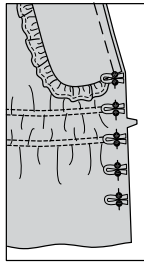
15. Fold **LOOP (10)** in half, lengthwise, with **RIGHT** sides together. Stitch a scant 1/4" (6mm) from fold edge, stretching loop while stitching. With a needle, attach a strong thread to one end of loop.



16. Draw needle eye forward, through fold, turning loop **RIGHT** side out. Cut five loops, 2-1/4" (5.7cm) long.



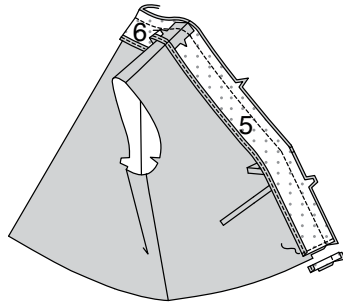
17. On **OUTSIDE**, pin ends of loops to **RIGHT** front between the small dots. Baste along seamline.



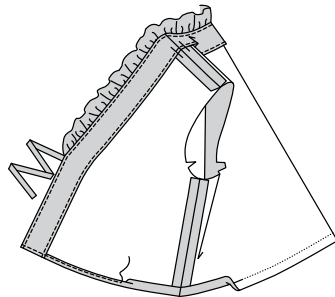
CONTINUE AS FOLLOWS FOR BOTH VIEWS

18. Stitch **FRONT FACING (5)** to **BACK FACING (6)** at shoulder edges. To finish long unmarked edge, stitch 1/4" (6mm) from raw edge, turn under edge along stitching and stitch; or zigzag stitch; or overlock stitch raw edge.

With **RIGHT** sides together and raw edges even, pin facing to top along neck, front, and lower edges. Stitch along neck and front seamline and along 5/8" (1.5cm) hemline on lower edge. Trim front and neck seam. Trim facing close to stitching. Trim top to within 5/8" (1.5cm) of inner edge of facing.



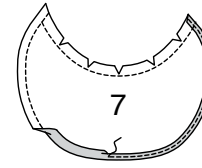
19. UNDERSTITCH the facing. Turn facing to **INSIDE**; press, pressing up hem along marking. To form a **NARROW HEM**, press under 1/4" (6mm) on raw edge. Stitch hem in place starting at opening edge.



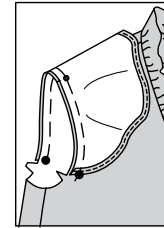
ARMHOLE FLOUNCE A

20. Machine-stitch 3/8" (1cm) from unmarked edge of **ARMHOLE FLOUNCE (7)**. Press up hem along stitching. To form a **NARROW HEM**, tuck under raw edge to meet crease; press. Stitch hem in place close to inner pressed edge.

Machine-stitch 5/8" (1.5cm) from remaining armhole edge. Clip to stitching along curves.

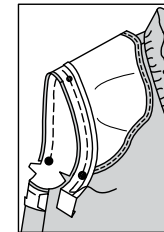


21. On **OUTSIDE**, pin flounce to armhole edge, matching large dots, placing inner small dot at shoulder seam. Baste.

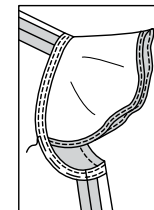


22. Cut a piece of bias tape the length of the armhole edge, plus 3/4" (2cm). Open out one edge of tape; press. With **RIGHT** sides together, pin tape to armhole edge, having raw edge 1/8" (3mm) from raw edge of armhole, turning under and lapping one end at side seam.

Stitch. **TRIM SEAM.**



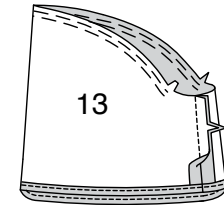
23. UNDERSTITCH the tape. Turn tape to **INSIDE**; press. Baste close to inner edge of tape. On **OUTSIDE**, **TOPSTITCH** as basted.



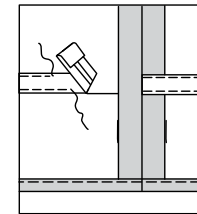
SLEEVE B

24. To **GATHER** upper edge of **SLEEVE (13)** between the notches, loosen needle tension slightly. On **OUTSIDE**, stitch 5/8" (1.5cm) from cut edge using a long stitch. Stitch again 1/4" (6mm) from the first stitching within the seam allowance.

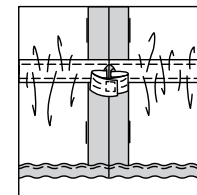
Stitch underarm edges of sleeve together. **NARROW HEM.**



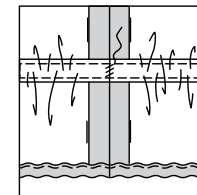
25. To make casing for elastic, cut a piece of bias tape the length of the casing line. Turn under 5/8" (1.5cm) on each end; press. On **INSIDE**, pin tape to sleeve with lower edge along casing line and pressed ends meeting at underarm seam. **EDGESTITCH** close to long edges of tape.



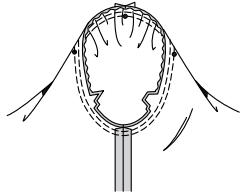
26. Cut a piece of elastic the length of the **GUIDE FOR ELASTIC (14)** for each sleeve. Thread elastic through casing. Stitch ends, securely. **TRIM SEAM.**



27. SLIPSTITCH opening in casing closed. Distribute gathers evenly.

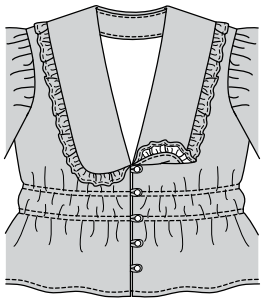


28. Turn **SLEEVE** RIGHT side out. Hold top **WRONG** side out with armhole toward you. With **RIGHT** sides together, pin sleeve to armhole edge with center small dot at shoulder seam, matching underarm seams, notches and remaining small dots. Pull up gathering stitches to fit. To distribute fullness evenly, slide fabric along bobbin threads. Baste. Stitch. Stitch again 1/8" (3mm) from first stitching. Trim seam below notches close to stitching. Press only the seam allowance. Turn seam towards sleeve.



FINISHING B

29. Bring front sections together. On **RIGHT** front, sew buttons under loops.

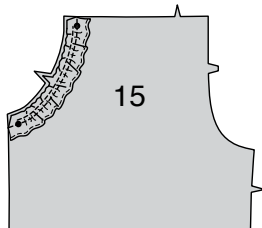


SHORTS C, PANTS D

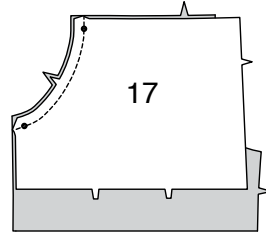
1. Machine-stitch 3/8" (1cm) from unnotched edge of **RUFFLE** (16). Press up hem along stitching. To form a **NARROW HEM**, tuck under raw edge to meet crease; press. Stitch hem in place close to inner pressed edge.
To **GATHER** notched edge between the small dots, loosen needle tension slightly. On **OUTSIDE**, stitch 5/8" (1.5cm) from cut edge using a long stitch. Stitch again 1/4" (6mm) from the first stitching within the seam allowance.



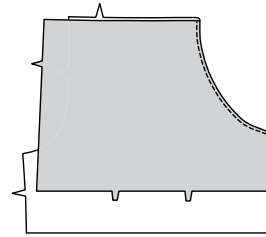
2. Pin **WRONG** side of ruffle to **RIGHT** side of **FRONT** (15) along outer curved edge, matching small dots and notches, pulling up gathering stitches to fit and distributing gathers evenly. Baste.



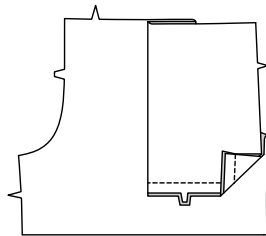
3. With **RIGHT** sides together and raw edges even, pin **SIDE FRONT AND POCKET** (17) to front, matching small dots and notches. Stitch outer curved edge. **TRIM SEAM**.



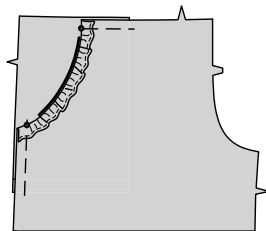
4. **UNDERSTITCH** the pocket. Turn pocket to **INSIDE**; press.



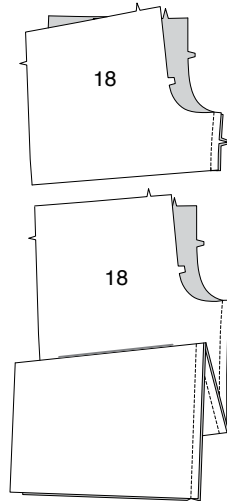
5. On **INSIDE**, fold pocket along foldline; press. Stitch lower edges of pocket along double notched edge.



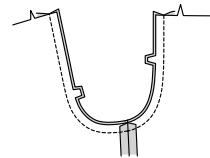
6. On **OUTSIDE**, lap front over side front and pocket, matching small dots, having raw edges even. Baste side and upper edges together.



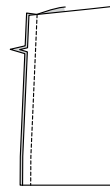
7. With **RIGHT** sides together and raw edges even, stitch front to **BACK** (18) at inner leg edges.



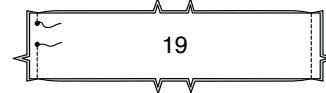
8. With **RIGHT** sides together and raw edges even, pin center edges of garment, matching seams and notches. Stitch. To reinforce the seam, stitch again over previous stitching.



9. Stitch front to back at side edges.

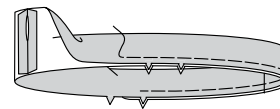


10. With **RIGHT** sides together, stitch seams of **CASING** (19), leaving an opening in **LEFT** side seam between small dots, as shown. Back-stitch at small dots to reinforce seam.

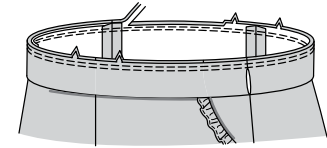


11. Press seams open.

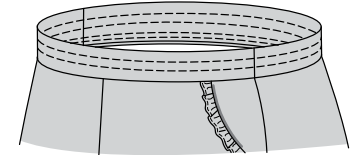
Fold casing in half, lengthwise, with **WRONG** sides together, having raw edges even. Baste raw edges together. The side with the opening is the underside of the casing.



12. With the underside of casing facing you, pin casing to garment matching centers and side seams. Stitch along seam line. Stitch again 1/4" (6mm) from first stitching within seam allowance. Trim close to second stitching.



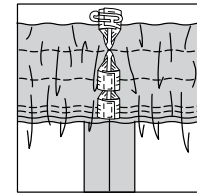
13. Press seam toward garment, pressing casing out. To form three separate casings, stitch along stitching lines.



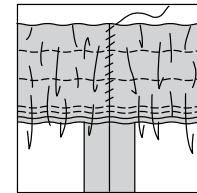
14. Cut a piece of elastic the length of each guide, **ELASTIC GUIDE UPPER** (20), **ELASTIC GUIDE MIDDLE** (20), and **ELASTIC GUIDE LOWER** (20). Transfer markings.

Insert elastic through opening in each casing, working elastic through all rows at same time.

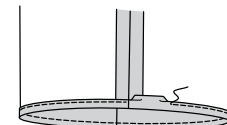
Overlap ends and hold with safety pins. Try on garment and adjust to fit. Stitch ends of elastic together securely.



15. **SLIPSTITCH** opening edges of each casing together. Distribute fullness evenly.



16. Press up 5/8" (1.5cm) hem allowance. To form a **NARROW HEM**, turn under raw edge to meet crease; press. Stitch close to inner pressed edge.





Congrats!

You've completed your sewing adventure

**SHARE
YOUR** LOOK



Post your pattern and tag us
[@simplicity_creative_group](#) and [#simplicitypatterns](#)
for a chance to be featured on our social media.

Look for more PDF patterns at [simplicity.com](https://www.simplicity.com)

Have a question or need help with your sewing project call us at
1-800-782-0323

McCall's
by **design**_{group}

McCall's ©2024 a division of IG Design Group Americas Inc. • Atlanta, GA 30342 USA www.thedesigngroup.com • All Rights Reserved. www.mccall.com • Made in the U.S.A. Fabriqué aux États-Unis.
To be used for individual private home use only and not for commercial or manufacturing purposes. • A usage privé seulement et non à des fins commerciales ou de production en série. • Para uso privado solamente, no se puede utilizar con propósitos de comercialización o de producción en serie.