

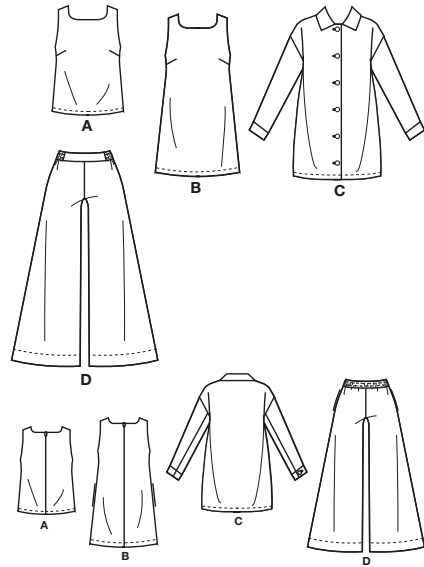
M8562

Page 1 of 4

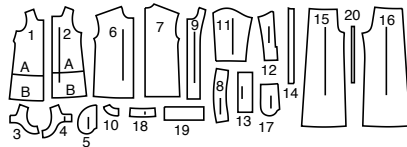
McCall's®

English

1-800-782-0323



20 PATTERN PIECES



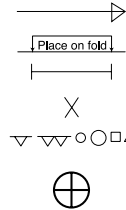
- | | |
|--------------------|----------------------------|
| 1 Front-A,B | 11 Sleeve-C |
| 2 Back-A,B | 12 Sleeve Back-C |
| 3 Front Facing-A,B | 13 Cuff-C |
| 4 Back Facing-A,B | 14 Guide for Buttonholes-C |
| 5 Pocket-B,C | 15 Front-D |
| 6 Front-C | 16 Back-D |
| 7 Back-C | 17 Pocket-D |
| 8 Collar-C | 18 Front Waistband-D |
| 9 Front Facing-C | 19 Casing-D |
| 10 Back Facing-C | 20 Guide for Elastic-D |

Tailles	6	8	10	12	14	16	18	20	22	24
Françaises	34	36	38	40	42	44	46	48	50	52
Européen	32	34	36	38	40	42	44	46	48	50

MESURES DES VÊTEMENTS FINI (Motif et aisance de port compris)

A,B Poitrine	91	94	97	100	105	110	116	121	126	131	cm
C Poitrine	109	112	114	118	123	128	133	138	144	149	"
D Hanches	97	99	102	105	110	116	121	126	131	136	"
Largeur à l'ourlet											
Haut A	99	102	104	108	113	118	123	128	133	138	cm
Robe B	109	112	114	118	123	128	133	138	144	149	"
Veste C	117	119	122	126	131	136	141	146	151	156	"
Longueur, chaque jambe											
Pantalon D	71	74	76	78	81	83	86	88	91	93	cm
Longueur finie – dos, votre nuque à l'ourlet											
Haut A	52	53	53	54	55	55	56	57	57	58	cm
Robe B, Veste C	75	76	76	77	77	78	79	79	80	81	"
Longueur finie – côté, taille à l'ourlet											
Pantalon D (repose 2.5cm dessous de la taille)											
	105	106	107	107	108	109	109	110	110	111	cm

PATTERN MARKINGS



GRAINLINE: Place on straight grain of fabric, parallel to selvage or fold.

FOLDLINE: Place line on fold of fabric.

BUTTONHOLE MARKING: Indicates exact length and placement of buttonholes.

BUTTON MARKING: Indicates button placement.

NOTCHES AND SYMBOLS: For matching seams and construction details.

Indicates the Bustline, Waistline, Hip and/or Biceps. Measurements refer to circumference of Finished Garment (Body Measurement + Wearing Ease + Design Ease). Adjust pattern if necessary. The measurement excludes pleats, tucks, darts and seam allowances.

SEAM ALLOWANCE: 5/8" (1.5cm) included unless otherwise indicated, but not printed on tissue.

ADJUST IF NECESSARY

Lengthen or Shorten at adjustment lines (==) or where indicated on pattern. If substantial length is added, you may need to purchase additional fabric.

TO SHORTEN: Crease along adjustment line. Make a fold half the amount needed. Tape in place.

TO LENGTHEN: Slash between adjustment lines. Spread amount as needed, keeping edges parallel. Tape over paper.

When Alteration lines are not on tissue, lengthen or shorten at lower edge.

SHRINK FABRIC if not labeled pre-shrunk. Press.**CIRCLE LAYOUT** for View, Size, Fabric Width.

Use **WITH NAP** layout for fabrics with one-way designs, nap, pile or surface shading. Because most knits have surface shading, a with nap layout is used.

For **DOUBLE THICKNESS (WITH FOLD)** - fold fabric with right sides together.

*** DOUBLE THICKNESS (WITHOUT FOLD)** - For fabrics with nap, fold fabric crosswise, right sides together. Mark as shown. Cut along crosswise fold of fabric (A). Turn upper layer 180° so arrows go in same direction and place over lower layer, right sides together (B).

For **SINGLE THICKNESS** - place fabric right side up. (For Fur Pile fabrics, place pile side down.)

CUTTING AND MARKING

★ Cut other pieces first, allowing enough fabric to cut this piece. Open fabric. For "Cut 1" pieces, cut piece once on single layer of fabric with piece face up on right side of fabric.

Pattern may have cutting lines for several sizes. Select the proper cutting line or pattern pieces for your size.

Before **CUTTING** place all pieces on fabric according to layout. Pin. (**Layouts show approximate position of pattern pieces; position may vary according to your pattern size.**) Cut **ACCURATELY**, cutting notches outward.

Before removing pattern, **TRANSFER MARKINGS** and lines of construction to Wrong Side of fabric, using the Pin and Chalk Pencil method or Tracing Paper and Dressmaker Wheel. Markings needed on right side of fabric should be thread traced.

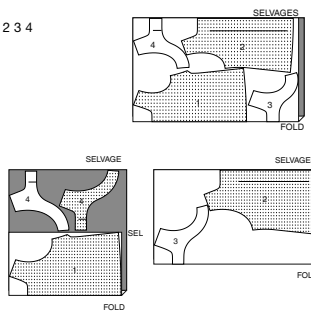
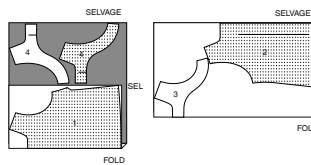
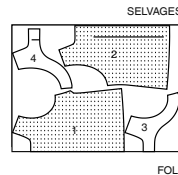
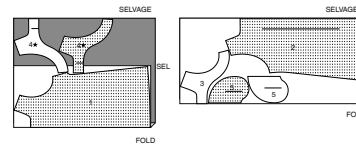
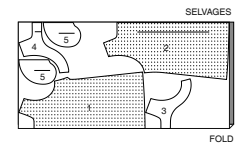
NOTE: Broken-line boxes (a! b! c!) in layouts represent pieces cut by measurements provided.

CUTTING LAYOUTS

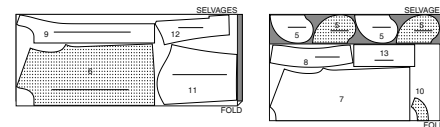
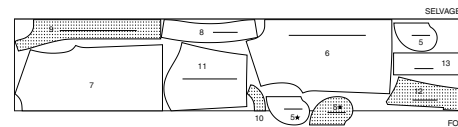
RIGHT SIDE OF PATTERN	WRONG SIDE OF PATTERN	RIGHT SIDE OF FABRIC	WRONG SIDE OF FABRIC
-----------------------	-----------------------	----------------------	----------------------

TOP A

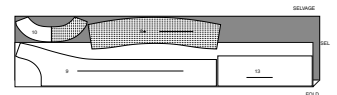
USE PIECES: 1 2 3 4

45" (115 CM)
WITH NAP
SIZES 6 8 1045" (115 CM)
WITH NAP
SIZES 12 14
16 18 20 2260" (150 CM)
WITH NAP
ALL SIZES45" (115 CM)
WITH NAP
SIZES 14 16
18 20 2260" (150 CM)
WITH NAP
ALL SIZES**JACKET C**

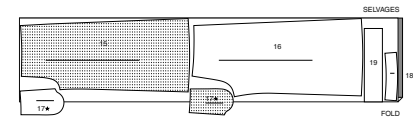
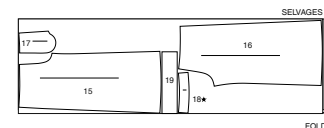
USE PIECES: 5 6 7 8 9 10 11 12 13

45" (115 CM)
WITH NAP
SIZES 6 8 10 1245" (115 CM)
WITH NAP
SIZES 14 16 18 20 22 2460" (150 CM)
WITH NAP
SIZES 6 8 10**INTERFACING C**

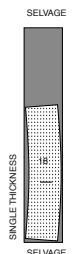
USE PIECES: 8 9 10 13

20" (51 CM)
ALL SIZE**PANTS D**

USE PIECES: 15 16 17 18 19

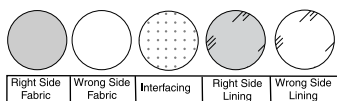
45" (115 CM) WITH NAP
ALL SIZES60" (150 CM)
WITH NAP
ALL SIZES**INTERFACING D**

USE PIECE: 18

20" (51 CM)
ALL SIZE

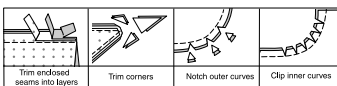
SEWING INFORMATION

FABRIC KEY



SEAM ALLOWANCES

Use 5/8" (1.5cm) seam allowances unless otherwise indicated.



PIN AND FIT

Pin or baste seams, **RIGHT SIDE TOGETHER**, matching notches. Fit garment before stitching major seams.

PRESS

Press seam allowances flat; then open unless otherwise stated. Clip where necessary so they lie flat.

GLOSSARY

Sewing methods in **BOLD TYPE** have Sewing Tutorial Video available. Scan **QR CODE** to watch videos:

DART - See **Darts**: "sewing flat dart" video.

EDGE STITCH - See **Machine Stitches**: "how to edgestitch" video.

FINISH - See **Seams**: "how to finish seam allowances" video.

INVISIBLE ZIPPER - See **Zipper**: "sewing an invisible zipper" video.

NARROW HEM - See **Hems**: "sewing narrow hems" video.

REINFORCE - See **Machine Stitches**: "how to reinforce" video.

STAYSTITCH - See **Machine Stitches**: "how to do stay-stitching" video.

STITCH IN THE DITCH - See **Machine Stitches**: "how to stitch in the ditch" video.

TACK - See **Hand-Stitching**: "how to tack" video.

TOPSTITCH - See **Machine Stitches**: "how to topstitch" video.

TRIM - See **How to Sew: Trim, Clip, and Layer Seams** video.

UNDERSTITCH - See **Machine Stitches**: "how to understitch" video.

SEWING TUTORIALS



Build your skills viewing short, easy-to-follow videos at simplycity.com/sewingtutorial

PATTERN PIECES WILL BE IDENTIFIED BY NUMBERS THE FIRST TIME THEY ARE USED.

STITCH 5/8" (1.5CM) SEAMS WITH RIGHT SIDES TOGETHER UNLESS OTHERWISE STATED.

TOP A AND DRESS B

NOTE: The first view mentioned will be illustrated unless otherwise indicated.

INTERFACING

1. Fuse **INTERFACING** to wrong side of each matching **FABRIC** section, following manufacturer's instructions.

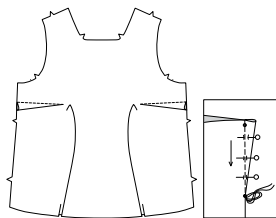


FRONT AND BACK

2. **STAYSTITCH** neck edge of **FRONT** (1) and each **BACK** (2) section 1/2" (1.3cm) from raw edge in direction of arrows. Staystitching will not be shown in the following illustrations.

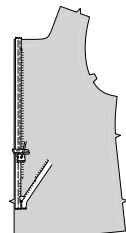


3. To make flat **DARTS** in front, with right sides together, bring broken lines together, matching small dots. Stitch along broken lines from wide end to point. Do not backstitch at point. Leave thread ends long and knot. Press dart down.

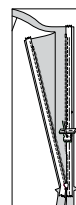


NOTE: Stitch the **INVISIBLE ZIPPER** using an invisible zipper foot. If the zipper is longer than the zipper opening, adjust after the zipper is inserted. For a How-to video, see **ZIPPER**: "sewing an invisible zipper".

4. Open zipper and press tape using a cool iron. On **OUTSIDE**, pin **RIGHT** side of zipper face down on **RIGHT** side of zipper opening. Have the coil along the seam line, the tape within the seam allowance and the top stop 3/4" (2cm) below upper edge, as shown. Hand-baste along center of tape. Position zipper foot at top of zipper with **RIGHT** groove of foot over coil. Stitch along tape to the notch. Back-stitch to reinforce.



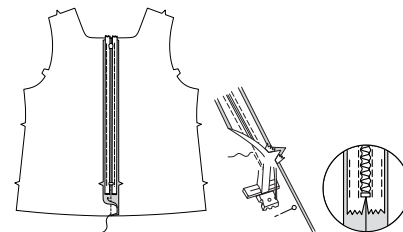
5. Pin remaining half of zipper to the **LEFT** side of the zipper opening in same manner. Make sure upper and lower edges of top or dress are even. Hand-baste along center of tape. Position zipper foot at the top of the zipper with **LEFT** groove over the coil. Stitch along tape to notch. Back-stitch to reinforce.



6. Close zipper and check that it is invisible from the **OUTSIDE**.

Pull free ends of zipper tape away from seam allowance. Pin remaining center back seam together below zipper. Position zipper foot all the way to the **LEFT** so the needle goes down through the outer notch of the foot. Start stitching seam 1/4" (6mm) above lowest stitch and slightly to the **LEFT**. Stitch seam for about 3" (7.5cm). Stitch remainder of seam using your regular presser foot.

If you prefer, open out each seam allowance at end of zipper and stitch tape to seam allowance.



7. VIEW A:

Stitch front to back at sides.



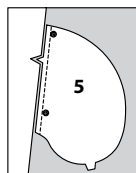
POCKETS AND SIDE SEAMS B

8. VIEW B:

Apply pockets to side edges of front and back as follows:

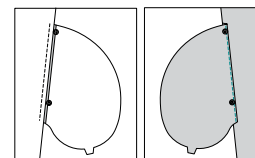
With **RIGHT** sides together, pin **POCKET** (5) to garment, matching large dots, having raw edges even.

Stitch in a 3/8" (1cm) seam.

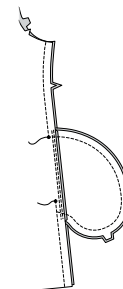


9. Press seam toward pocket, pressing pocket out.

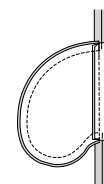
UNDERSTITCH front pocket.



10. Pin front to back at side seams, matching large dots. Stitch side seams, leaving an opening between large dots; back-stitch at large dot to reinforce seam. Stitch pocket edges together between seams.

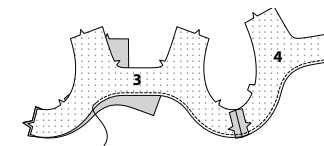


11. Clip garment back seam allowance at ends of pocket. Press seams open above and below clip. Press pocket toward front.



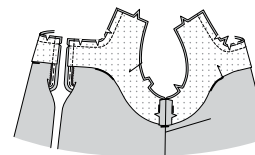
FACINGS A, B

12. Stitch **FRONT FACING** (3) to **BACK FACING** (4) sections at sides. **FINISH** unnotched edge.



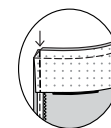
13. Open out center back opening edges of garment, rolling zipper teeth away from opening edge; pin facing to garment along neck edges, matching centers and having raw edges even.

Stitch neck edges. **TRIM** seam; clip curves.



14. Pin back opening edges together. Using an adjustable zipper foot, stitch across facing 1/2" (1.3cm) from back edges, keeping zipper teeth free.

TRIM corners. Do not trim center back edges.

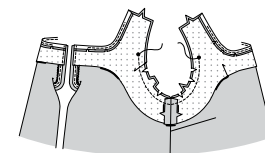
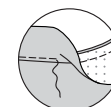


15. UNDERSTITCH neck edges of front and back facing as close as possible to back opening and to within 1-1/2" (3.8cm) of shoulder edges.

Pin remaining raw edges of facing to garment, matching underarm seams and small dots. Stitch armholes between small dots.

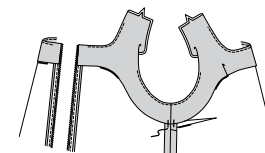
Trim seam; clip curves.

UNDERSTITCH armhole edges to within 1-1/2" (3.8cm) of where armhole stitching ends.



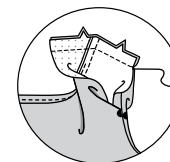
16. Turn facing and back edges to **INSIDE**, rolling zipper teeth back in place; press.

Hand **TACK** lower edges of facing to side seams to secure it in place.



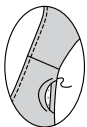
17. Open out facing at shoulders. Pin front and back together at shoulders; pin facing front and back edges together, matching seams.

Stitch in one continuous seam.



18. Turn facing down, turning in remaining armhole edges along seamlines. Press.

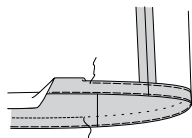
SLIPSTITCH pressed edges together.



FINISHING

19. Turn up 1-1/4" (3.2cm) hem. Baste close to fold. Turn in 1/4" (6mm) on raw edge. Baste hem in place close to upper edge. Press.

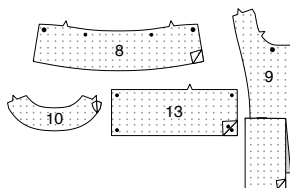
TOPSTITCH along upper basting, as shown.



JACKET C

INTERFACING

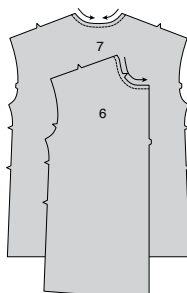
1. Fuse **INTERFACING** to wrong side of each matching **FABRIC** section, following manufacturer's instructions.



FRONT, BACK, AND POCKET APPLICATION

2. **STAYSTITCH** neck edge of **FRONT** (6) and **BACK** (7) sections 1/2" (1.3cm) from raw edge in direction of arrows.

Staystitching will not be shown in the following illustrations.



3. To **REINFORCE** each front for collar, using fine stitches, stitch along neck seam for about 1" (2.5cm) on each side of large dot, stitching through large dot.

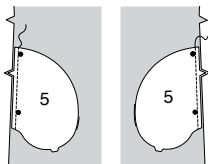


4. VIEW B:

Apply pockets to side edges of front and back as follows:

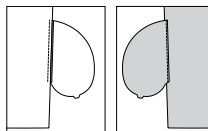
With **RIGHT** sides together, pin **POCKET** (5) to garment, matching large dots, having raw edges even.

Stitch in a 3/8" (1cm) seam.

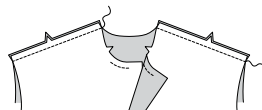


5. Press seam toward pocket, pressing pocket out.

UNDERSTITCH front pocket by pressing pocket and seam away from garment, stitching through pocket and seam allowances close to seam.



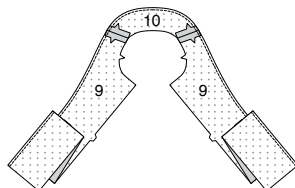
6. Stitch back to fronts at shoulders.



FACING

7. Stitch **FRONT FACING** (9) sections to **BACK FACING** (10) at shoulders.

FINISH long unnotched edge.

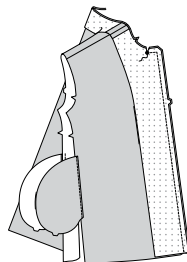


8. With **RIGHT** sides together and raw edges even, pin facing to front and neck edge, matching shoulder seams and large dots.

Stitch front edges and neck edges as far as large dot.

Clip neck edge through all thicknesses at large dot.

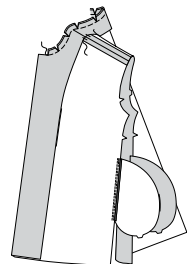
TRIM seam and corners; do not trim or clip between large dots.



9. Turn facing to inside. Baste raw neck edges together, matching centers back and shoulder seams, having raw edges even.

Clip curves.

Hand **TACK** lower edge of facing to shoulder seam allowances.

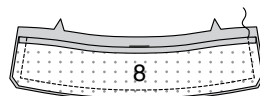


COLLAR

10. Press under 5/8" (1.5cm) from notched edge of interfaced **COLLAR** (8) section; trim to 3/8" (1cm).

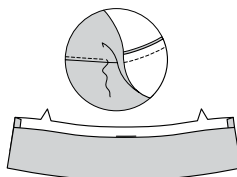
With **RIGHT** sides together, stitch facing to collar, leaving notched edge open.

TRIM seam and corners.



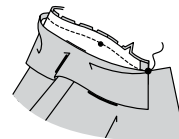
11. UNDERSTITCH collar facing.

Turn collar; press.



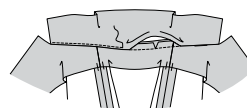
12. On **OUTSIDE**, pin collar (facing side) to neck edge, matching centers back and large dots, placing small dots at shoulder seams.

Stitch only the collar facing to neck between large dots, keeping collar free.



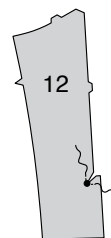
13. Turn collar to **INSIDE**, turning neck seam toward collar; press.

EDGESTITCH pressed edge of collar over neck seam.

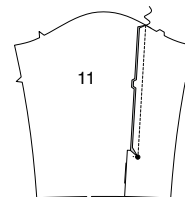


SLEEVE AND SIDE SEAM

14. To **REINFORCE** inner edges of **SLEEVE BACK** (12) at large dot, stitch along seamline, pivoting at large dot. Carefully clip sleeve back seam allowance along solid clip line to large dot, being careful not to clip through stitching.

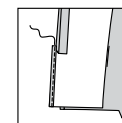
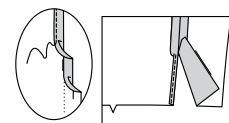


15. Pin **SLEEVE** (11) to sleeve back, matching large dots. Stitch seam above large dot.



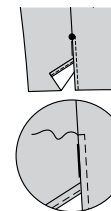
16. To make a **NARROW HEM** on inner edge of sleeve to large dot, press under 5/8" (1.5cm) hem allowance. Tuck under raw edge to meet crease; press. Stitch hem in place close to inner edge.

Make a **NARROW HEM** on extension edge of sleeve back, stitching through to upper edge of extension.



17. On outside, lap opening edge of sleeve over sleeve back at large dot.

TOPSTITCH across upper edge of opening between seam and hem stitching, as shown.

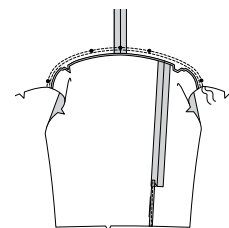


18. Pin sleeve to armhole edge with center small dot at shoulder seams, matching notches and remaining small dots.

Stitch. Stitch again 1/4" (6mm) from first stitching.

Trim seam below notches close to stitching.

Press seam toward sleeve.

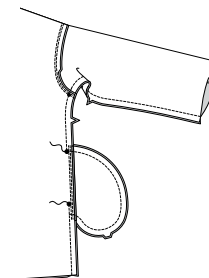


19. Pin front to back at underarm and side seam, matching notches, small and large dots.

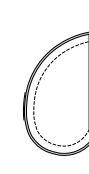
Stitch entire side seam, leaving seam open between large dots for pockets.

Stitch again over first stitching at underarm curve to **REINFORCE**.

Stitch edges of pockets together between side seams.



20. Clip jacket back seam allowance at ends of pocket. Press seams open above and below clip. Press pocket toward front.

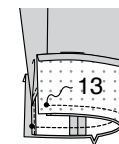


CUFF

21. Press under 1/2" (1.3cm) on long unnotched edge of **CUFF** (13).

Pin cuff to lower edge sleeve, right sides together, matching notches, and small dots to opening edges. Stitch.

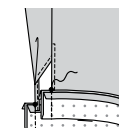
TRIM seam.



22. Press seam towards cuff, pressing cuff out. Fold cuff along foldline, right sides together.

Stitch ends.

TRIM seams.

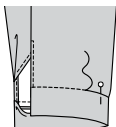


23. Turn cuff right side out.

On inside, pin pressed edge 1/8" (3mm) over seam, placing pins on outside.

On outside, **STITCH IN THE DITCH** or "groove" of the seam, catching in pressed edge on inside.

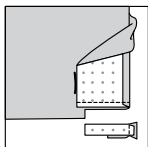
TIP- To conceal the stitches in the ditch or groove of seam, try using a zipper foot, spreading the sleeve and cuff away from the seam with your fingers.

**24.** Turn lower edge of facing to outside.

Stitch across lower edge of facing exactly 1-1/4" (3.2cm) above raw edge.

Trim facing close to stitching.

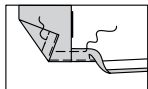
Trim jacket to within 5/8" (1.5cm) of inner edge of facing.

**25.** Turn facing to inside, turning up 1-1/4" (3.2cm) hem allowance.

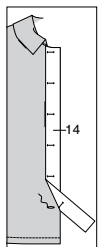
Baste close to fold.

Turn in 1/4" (6mm) on raw edge. Baste hem in place close to upper edge between front opening edges. Press.

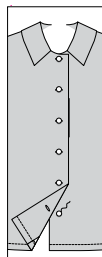
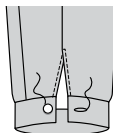
TOPSTITCH along upper basting, as shown.

**26.** Place GUIDE FOR BUTTONHOLES (14) on right front, matching centers front and having outer edges of guide even with finished edge of shirt.

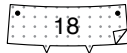
Transfer markings. Make buttonholes at markings.

**27.** Lap opening edges as shown, matching centers front. Using buttonholes as guides, make button marking on left front.

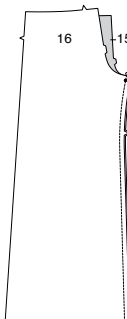
Sew buttons at markings.

**28.** Make buttonhole in cuff at marking. Sew button at small dot.**PANTS D****INTERFACING**

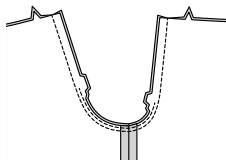
1. Fuse INTERFACING to wrong side of each matching FABRIC section, following manufacturer's instructions.

**FRONT AND BACK**

2. Pin FRONT (15) to BACK (16) at inner leg seams, matching notches and small dots, stretching back to fit.

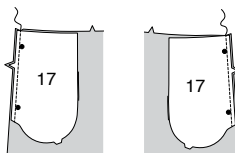
**3.** Pin center seam, matching inner leg seams and notches; stitch.

Stitch again 1/4" (6mm) away in seam allowance between notches. Trim close to second stitching.

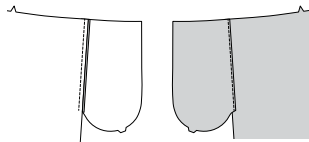
**4.** Apply pockets to side edges of front and back as follows:

With RIGHT sides together, pin POCKET (17) to garment, matching large dots, having raw edges even.

Stitch in a 3/8" (1cm) seam.

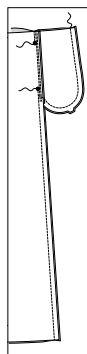
**5.** Press seam toward pocket, pressing pocket out.

UNDERSTITCH front pocket by stitching through pocket and seam allowance close to seam.

**6.** Pin front to back at side seams, matching large dots.

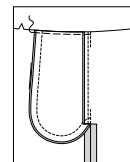
Stitch side seams, leaving an opening between large dots; back-stitch at large dot to reinforce seam.

Stitch pocket edges together from side seam to upper edge.

**7.** Clip pants back seam allowance at lower end of pocket.

Press seam open below clip. Press pocket toward front.

Baste 1/4" (6mm) from upper edge of pocket.

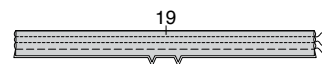
**WAISTBAND AND CASING**

NOTE: Pants are worn 1" (2.5cm) below waist.

8. Fold CASING (19) along foldline with WRONG sides together, having raw edges together.

Baste long edges together.

Stitch along stitching lines, forming three separate casings.

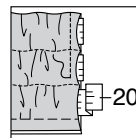


9. Cut three pieces of elastic the length of GUIDE FOR ELASTIC (20).

Insert elastic through opening in each casing, working elastic through all rows at same time, having raw edges even. This eliminates that tug-of-war that you always have when trying to pull that last piece of elastic through an already bunched up casing.

Stitch across ends about 1/4" (6mm) from raw edges.

Distribute fullness evenly.



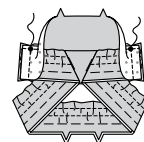
10. Stitch FRONT WAISTBAND (18) sections together along upper edge, matching small dots.

TRIM seam.

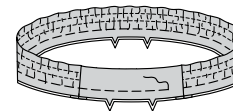
If you prefer, **UNDERSTITCH** facing by stitching through facing and seam allowance close to seam.



11. With right sides together and raw edges even, sandwich each end of casing between waistband and facing, having fold edge of casing at small dot. Stitch ends.

**12.** Turn waistband right side out, turning out casing.

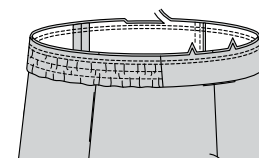
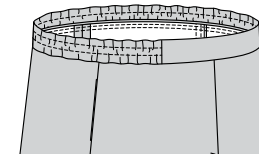
Baste raw edges of waistband together, having raw edges even.

**13.** On outside, pin waistband/casing to pants, matching centers and notches.

Stitch waist seam, stretching casing as you stitch.

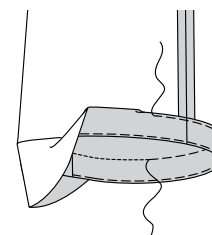
Stitch again 1/4" (6mm) from first stitching within seam allowance.

Trim close to second stitching.

**14.** Press seam toward waistband/casing, pressing waistband/casing out.**FINISHING**

15. Turn up 2-1/4" (5.7cm) hem. Baste close to fold. Turn in 1/4" (6mm) on raw edge. Baste hem in place close to upper edge. Press.

TOPSTITCH along upper basting, as shown.





Congrats!

You've completed your sewing adventure

SHARE YOUR LOOK



Post your pattern and tag us
[@simplicity_creative_group](#) and [#simplicitypatterns](#)
for a chance to be featured on our social media.

Look for more PDF patterns at [simplicity.com](https://www.simplicity.com)

Have a question or need help with your sewing project call us at
1-800-782-0323

McCall's
by **design**_{group}

McCall's ©2024 a division of IG Design Group Americas Inc. • Atlanta, GA 30342 USA www.thedesigngroup.com • All Rights Reserved. www.mccall.com • Made in the U.S.A. Fabriqué aux États-Unis.

To be used for individual private home use only and not for commercial or manufacturing purposes. • A usage privé seulement et non à des fins commerciales ou de production en série. • Para uso privado solamente, no se puede utilizar con propósitos de comercialización o de producción en serie.