

**McCall's**

M8561



Designed and printed in USA

Average

**MISSES' JACKET IN TWO LENGTHS AND SKIRT**

**Suggested Fabrics:** Cotton Blends, Denim, Linen, Twill. **Interfacing:** Lightweight Fusible.

**Notions:** A,B: ¾" (2cm) shank buttons: Eight for A, Ten for B. C: One 7" (18cm) zipper (adjust to fit), one ¾" (2cm) shank button.

Sizes	8	10	12	14	16	18	20	22	24	26
European	34	36	38	40	42	44	46	48	50	52

**BODY MEASUREMENTS: Select pattern size based on body measurements**

<b>Bust</b>	31½	32½	34	36	38	40	42	44	46	48	Ins.
<b>Waist</b>	24	25	26½	28	30	32	34	37	39	41	"
<b>Hip-9" below waist</b>	33½	34½	36	38	40	42	44	46	48	50	"
<b>Back-neck to waist</b>	15¾	16	16¼	16½	16¾	17	17¼	17½	17¾	18	"

<b>Jacket A</b>	60**	1¾	1¾	1¾	1¾	1¾	1¾	2½	2¼	2¼	Yds.
<b>Interfacing</b>	20"	1½	1½	1½	1½	1½	1½	1¼	1¼	1¼	"
<b>Jacket B</b>	60**	2¾	2½	2½	2½	2½	2½	2½	2½	2½	Yds.
<b>Interfacing</b>	20"	1¾	1¾	1¾	1¾	1½	1½	1½	1½	1½	"
<b>Skirt C</b>	60**	1	1	1	1	1	1	1	1	1	Yd.
<b>Interfacing</b>	20"	¾	¾	¾	¾	¾	¾	¾	¾	¾	"

**FINISHED GARMENT MEASUREMENTS (Includes Design and Wearing Ease)**

<b>A,B Bust</b>	51	52	53½	55½	57½	59½	61½	63½	65½	67½	Ins.
<b>C Hip</b>	36	37	38½	40½	42½	44½	46½	48½	50½	52½	"
<b>Width, lower edge</b>											
<b>Jacket A,B</b>	51	52	53½	55½	57½	59½	61½	63½	65½	67½	Ins.
<b>Skirt C</b>	39	40	41½	43½	45½	47½	49½	51½	53½	55½	"
<b>Finished back length from base of neck</b>											
<b>Jacket A</b>	19¾	20	20¼	20½	20¾	21	21¼	21½	21¾	22	Ins.
<b>Jacket B</b>	29¾	30	30¼	30½	30¾	31	31¼	31½	31¾	32	"
<b>Finished back length from waist</b>											
<b>Skirt C (sits 1" below waist)</b>	14¾	15	15¼	15½	15¾	16	16¼	16½	16¾	17	Ins.

\*with nap \*\*without nap

Moins Facile

**VESTE EN DEUX LONGUEURS ET JUPE POUR JEUNES FEMMES**

**Tissus Conseillés:** Cotonnades, Denim, Toile de lin, Twill. **Entoilage:** Thermocollant léger.

**Mercerie:** A,B: Boutons de tige de 2cm: 8 pour A, 10 pour B. C: 1 fermeture à glissière de 18cm (adaptez pour ajuster), 1 bouton de tige de 2cm.

Tailles	8	10	12	14	16	18	20	22	24	26
Françaises	36	38	40	42	44	46	48	50	52	54
Européen	34	36	38	40	42	44	46	48	50	52

**MESURES DU CORPS: Choisissez la taille du patron basée sur les mesures du corps**

<b>Poitrine</b>	80	83	87	92	97	102	107	112	117	122	cm
<b>Taille</b>	61	64	67	761	76	81	87	94	99	104	"

**Hanches (23cm au-dessous de la taille)**

	85	88	92	97	102	107	112	117	122	127	cm
<b>Dos du cou à la taille</b>	40	40.5	41.5	42	42.5	43	44	44.5	45	46	"

<b>Veste A</b>	150cm*	1.6	1.6	1.6	1.6	1.7	1.7	1.7	1.9	1.9	2.1	m
<b>Entoilage</b>	51cm	1.0	1.0	1.0	1.0	1.1	1.1	1.1	1.1	1.1	"	
<b>Veste B</b>	150cm*	2.2	2.2	2.3	2.3	2.3	2.3	2.4	2.4	2.4	m	
<b>Entoilage</b>	51cm	1.3	1.3	1.3	1.3	1.4	1.4	1.4	1.4	1.4	"	
<b>Jupe C</b>	150cm*	0.9	0.9	0.9	0.9	0.9	0.9	0.9	0.9	0.9	m	
<b>Entoilage</b>	51cm	0.6	0.6	0.6	0.6	0.6	0.7	0.7	0.7	0.7	"	

**MESURES DES VÊTEMENTS FINI (Motif et aisance de port compris)**

<b>A,B Poitrine</b>	130	132	136	141	146	151	156	161	166	171	cm
<b>C Hanches</b>	91	94	98	103	108	113	118	123	128	133	"
<b>Largeur à l'ourlet</b>											
<b>Veste A,B</b>	130	132	136	141	146	151	156	161	166	171	cm
<b>Jupe C</b>	99	102	105	110	116	121	126	131	136	141	"
<b>Longueur finie – dos, votre nuque à l'ourlet</b>											
<b>Veste A</b>	50	51	51	52	53	53	54	55	55	56	cm
<b>Veste B</b>	76	76	77	77	78	79	79	80	81	81	"
<b>Longueur finie – dos, taille à l'ourlet</b>											
<b>Jupe C (repose 2.5cm dessous de la taille)</b>	37	38	39	39	40	41	41	42	43	43	cm

\*avec sens \*\*sans sens



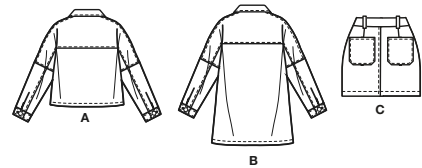
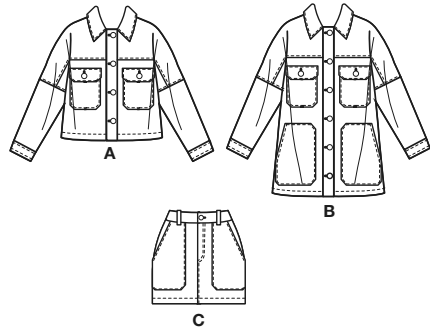
A



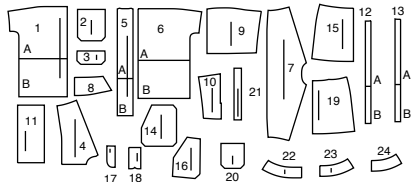
B



C

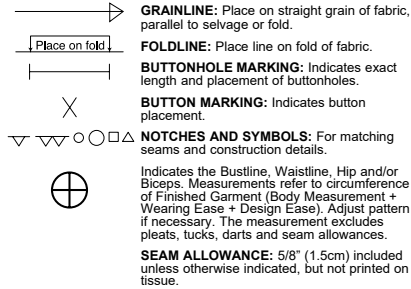


24 PATTERN PIECES



- 1 Front-A,B
- 2 Pocket-A,B
- 3 Flap-A,B
- 4 Yoke Front-A,B
- 5 Placket-A,B
- 6 Back-A,B
- 7 Yoke Back-A,B
- 8 Collar-A,B
- 9 Sleeve-A,B
- 10 Sleeve Back-A,B
- 11 Cuff-A,B
- 12 Guide for Buttons-A,B
- 13 Buttonhole Guide-A,B
- 14 Lower Pocket-B
- 15 Front-C
- 16 Pocket-C
- 17 Left Fly Facing-C
- 18 Right Fly-C
- 19 Back-C
- 20 Back Pocket-C
- 21 Carrier-C
- 22 Right Front Waistband-C
- 23 Left Front Waistband-C
- 24 Back Waistband-C

**PATTERN MARKINGS**



**ADJUST IF NECESSARY**

Lengthen or Shorten at adjustment lines (==) or where indicated on pattern. If substantial length is added, you may need to purchase additional fabric.

**TO SHORTEN:** Crease along adjustment line. Make a fold half the amount needed. Tape in place.

**TO LENGTHEN:** Slash between adjustment lines. Spread amount as needed, keeping edges parallel. Tape over paper.

When Alteration lines are not on tissue, lengthen or shorten at lower edge.

**CUTTING AND MARKING**

**SHRINK FABRIC** if not labeled pre-shrunk. Press.

**CIRCLE LAYOUT** for View, Size, Fabric Width.

Use **WITH NAP** layout for fabrics with one-way designs, nap, pile or surface shading. Because most knits have surface shading, a with nap layout is used.

For **DOUBLE THICKNESS (WITH FOLD)** - fold fabric with right sides together.

**\* DOUBLE THICKNESS (WITHOUT FOLD)** - For fabrics with nap, fold fabric crosswise, right sides together. Mark as shown. Cut along crosswise fold of fabric (A). Turn upper layer 180° so arrows go in same direction and place over lower layer, right sides together (B).

For **SINGLE THICKNESS** - place fabric right side up. (For Fur Pile fabrics, place pile side down.)

★ Cut other pieces first, allowing enough fabric to cut this piece. Open fabric. For "Cut 1" pieces, cut piece once on single layer of fabric with piece face up on right side of fabric.

Pattern may have cutting lines for several sizes. Select the proper cutting line or pattern pieces for your size.

Before **CUTTING** place all pieces on fabric according to layout. Pin. (Layouts show approximate position of pattern pieces; position may vary according to your pattern size.) Cut ACCURATELY, cutting notches outward.

Before removing pattern, **TRANSFER MARKINGS** and lines of construction to Wrong Side of fabric, using the Pin and Chalk Pencil method or Tracing Paper and Dressmaker Wheel. Markings needed on right side of fabric should be thread traced.

**NOTE:** Broken-line boxes (a|b|c) in layouts represent pieces cut by measurements provided.

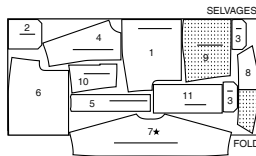
**CUTTING LAYOUTS**

RIGHT SIDE OF PATTERN	WRONG SIDE OF PATTERN	RIGHT SIDE OF FABRIC	WRONG SIDE OF FABRIC
-----------------------	-----------------------	----------------------	----------------------

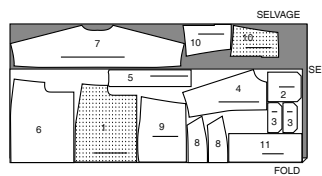
**JACKET A**

USE PIECES: 1 2 3 4 5 6 7 8 9 10 11

60" (150 CM)  
WITH NAP  
SIZES 8-10-12-14-  
16-18-20



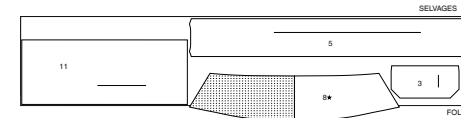
60" (150 CM)  
WITH NAP  
SIZES 22-24-26



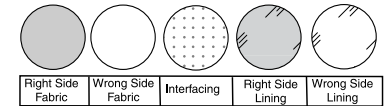
**INTERFACING B**

USE PIECES: 3 5 8 11

20" (51 CM)  
WITHOUT NAP  
ALL SIZES

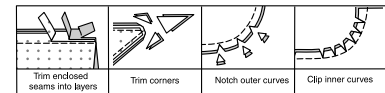


**SEWING INFORMATION  
FABRIC KEY**



**SEAM ALLOWANCES**

Use 5/8" (1.3cm) seam allowances unless otherwise indicated.



**PIN AND FIT**

Pin or baste seams, **RIGHT SIDE TOGETHER**, matching notches. Fit garment before stitching major seams.

**PRESS:** Press seam allowances flat; then open unless otherwise stated. Clip where necessary so they lie flat.

**GLOSSARY**

Sewing methods in **BOLD TYPE** have Sewing Tutorial Video available. Scan **QR CODE** to watch videos:

**DART** - See **sewing flat dart** video.

**EASE/GATHER** - See **sewing two row gathers** video.

**FINISH** - See **finish seam allowances** video.

**NARROW HEM** - See **sewing narrow hems** video.

**EDGESTITCH** - See **how to edgestitch** video.

**REINFORCE** - See **how to reinforce** video.

**STAYSTITCH** - See **how to do stay-stitching** video.

**TOPSTITCH** - See **how to topstitch** video.

**UNDERSTITCH** - See **how to understitch** video.

**SLIPSTITCH** - See **how to slipstitch** video.

**TRIM** - See Seams: "How to Sew: Trim, Clip, and Layer Seams" video.

SEWING TUTORIALS

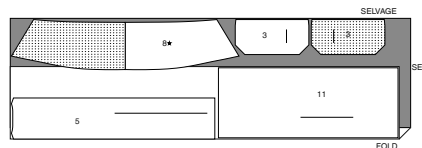


Build your skills, viewing short, easy-to-follow videos at [simplycity.com/sewingtutorials](http://simplycity.com/sewingtutorials)

**INTERFACING A**

USE PIECES: 3 5 8 11

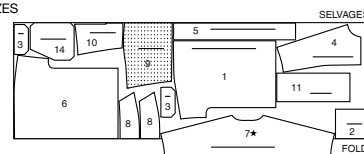
20" (51 CM)  
WITHOUT NAP  
ALL SIZES



**JACKET B**

USE PIECES: 1 2 3 4 5 6 7 8 9 10 11 14

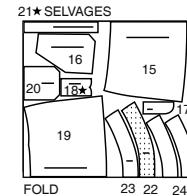
60" (150 CM) WITH NAP  
ALL SIZES



**JACKET C**

USE PIECES: 15 16 17 18 19 20 21 22 23 24

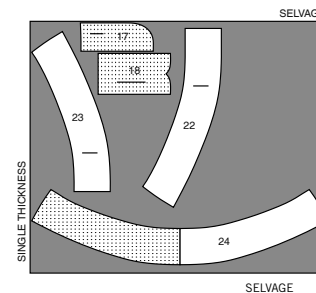
60" (150 CM)  
WITH NAP  
ALL SIZES



**INTERFACING C**

USE PIECES: 17 18 22 23 24

20" (51 CM)  
WITHOUT NAP  
ALL SIZES



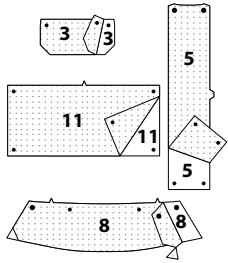
**JACKET A, B**

**NOTE:** Illustrated for **View A**, unless otherwise indicated.

**NOTE:** After each seam is stitched, **FINISH** all visible raw edges of seam allowances. Finishing for seams will not be shown in the following illustrations.

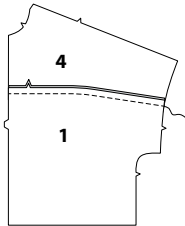
**INTERFACING**

1. Trim corners of **INTERFACING**, as shown. Fuse interfacing to wrong side of each matching **FABRIC** section, following manufacturer's instructions.

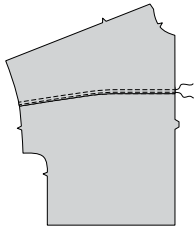


**FRONT AND BACK**

2. With **RIGHT** sides together, pin **YOKE FRONT** (4) to upper edge of **FRONT** (1), matching notches. Stitch. Press seam toward yoke.



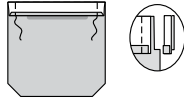
3. **EDGESTITCH** and **TOPSTITCH** yoke front seam.



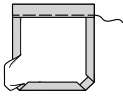
4. Turn in 1/4" (6mm) on upper edge of each **POCKET** (2). Press.



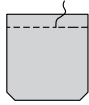
5. Turn upper edge to outside along foldline. Stitch ends. Trim.



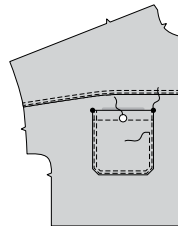
6. Turn upper edge of pocket to inside, turning in remaining seam allowances, diagonally folding corners. Press.



7. **TOPSTITCH** along basting.

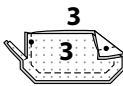


8. Pin pocket to front, matching large dots, placing pressed edges along pocket line. **EDGESTITCH** and **TOPSTITCH** side and lower edges, reinforcing upper ends.

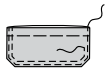


Sew button to pocket at small dot.

9. For each side, stitch one interfaced and one uninterfaced **FLAP** (3) section together, leaving upper edge open, as shown. **TRIM**.



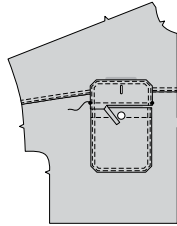
10. Turn. Press. Baste raw edges together. **EDGESTITCH** and **TOPSTITCH** finished edges.



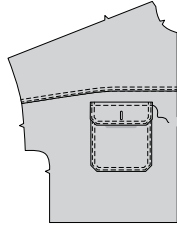
11. Make buttonhole in flap at marking.



12. Pin flap to front above pocket, placing seamline along flap line. Stitch. Trim flap seam allowance to a scant 1/4" (6mm), being careful not to cut front.

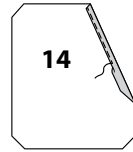


13. Turn flap down over pocket. Press. **TOPSTITCH** upper edge of flap.

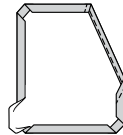


**VIEW B:**

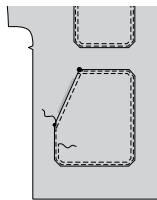
14. Make **NARROW HEM** at upper side edge of **LOWER POCKET** (14).



15. Turn in remaining seam allowances on pocket, diagonally folding corners. Press.

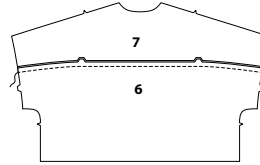


16. Pin pocket to front, matching symbols, placing pressed edges along pocket line. **EDGESTITCH** and **TOPSTITCH** pressed edges, reinforcing pocket opening.

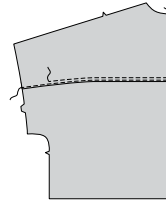


**ALL VIEWS:**

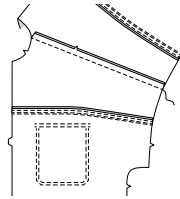
17. With **RIGHT** sides together, pin **YOKE BACK** (7) to upper edge of **BACK** (6), matching notches. Stitch. Press seam toward yoke.



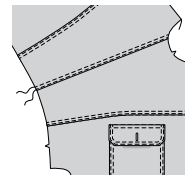
18. **EDGESTITCH** and **TOPSTITCH** yoke back seam.



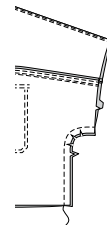
19. Stitch front to back at shoulders. Press seams toward back.



20. **EDGESTITCH** and **TOPSTITCH** back shoulder seams.

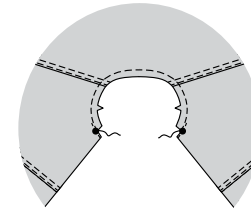


21. Stitch front to back at sides. Clip curves.

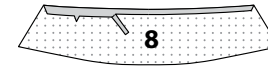


**COLLAR AND PLACKET**

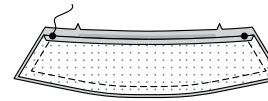
22. **REINFORCE** neck edge through large dot. Clip diagonally to large dot. Trim upper front edges to clips, as shown. **STAYSTITCH** neck edge between large dots.



23. For facing, turn in seam allowance on notched edge of interfaced **COLLAR** (8) section. Press. Trim pressed seam allowance to 3/8" (1cm).



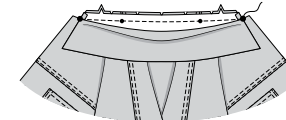
24. With right sides together, pin collar facing to collar, matching centers and symbols. Stitch, leaving notched edge open. **TRIM**.



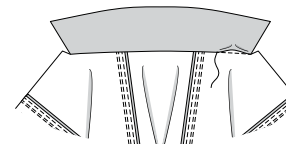
25. Turn. Press.



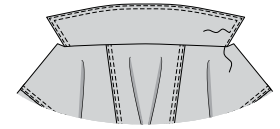
26. Pin collar to neck edge, matching centers, placing small dots at shoulder seams, matching large dots, clipping neck edge where necessary. Baste. Stitch. Trim. Press seam toward collar.



27. **SLIPSTITCH** pressed edge over seam.

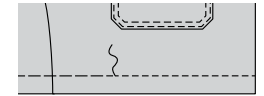
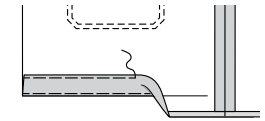


28. **EDGESTITCH** and **TOPSTITCH** outer edges of collar, as shown.

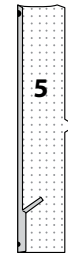


29. Turn up jacket hem. Baste close to fold. Turn in 1/4" (6mm) on raw edge. Baste hem in place close to upper edge. Press.

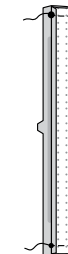
**TOPSTITCH** hem along upper basting.



30. Turn in seam allowance on long unnotched edge of **PLACKET** (5). Press. Trim pressed seam allowance to 3/8" (1cm).



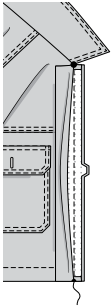
31. With **RIGHT** sides together, fold placket along foldline. Stitch upper and lower edges. **TRIM**.



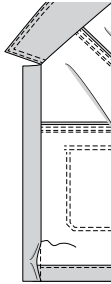
32. Turn. Press.



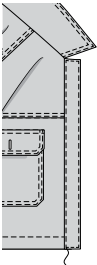
33. With RIGHT sides together, pin plackets to front, matching notches and symbols. Stitch. TRIM. Press seam toward placket.



34. SLIPSTITCH pressed edge over seam.

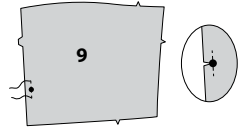


35. EDGESTITCH placket, as shown.

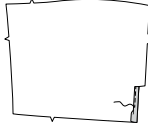


**SLEEVE AND FINISHING**

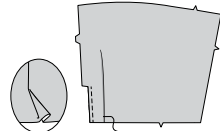
36. REINFORCE SLEEVE (9) through large dot. Clip to large dot.



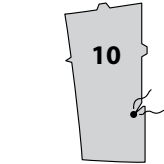
37. Make NARROW HEM at lower back edge of sleeve below clip.



38. To make pleat in sleeve, on OUTSIDE, crease sleeve along solid line. Bring crease to broken line. Pin. Baste across lower edge. Press.



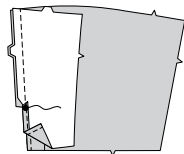
39. REINFORCE inner corner of SLEEVE BACK (10) through large dot, as shown. Clip diagonally to large dot.



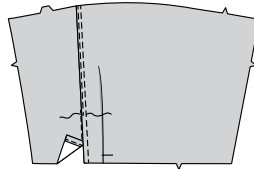
40. Make NARROW HEM on sleeve back, below clip, as shown.



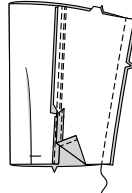
41. With RIGHT sides together, pin sleeve to sleeve back, matching notches and large dots. Stitch, ending stitching at large dot. Press seam toward sleeve.



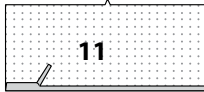
42. EDGESTITCH and TOPSTITCH sleeve seam, connecting to previous stitching.



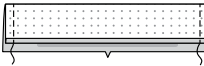
43. Stitch sleeve seam.



44. Turn in seam allowance on long unnotched edge of CUFF (11). Press. Trim pressed seam allowance to 3/8" (1cm).



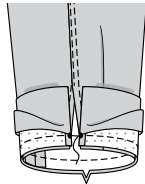
45. With RIGHT sides together, fold cuff along foldline. Stitch ends Trim.



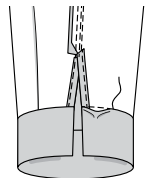
46. Turn. Press.



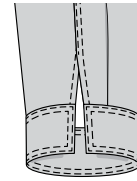
47. With RIGHT sides together, pin cuff to sleeve, matching notches and small dots. Stitch. Trim. Press seam toward cuff.



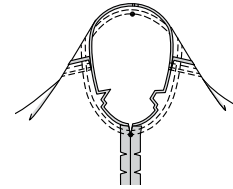
48. SLIPSTITCH pressed edge over seam.



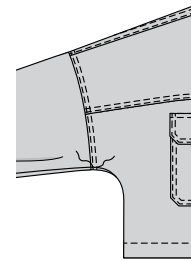
49. EDGESTITCH and TOPSTITCH cuff.



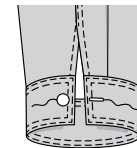
50. With right sides together, pin sleeve into armhole, matching notches, placing small dots at shoulder seam. Stitch. Press seam allowances toward jacket.



51. EDGESTITCH and TOPSTITCH jacket armhole seam.

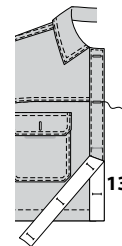


52. Make buttonhole in cuff at marking. Sew button to cuff at small dot.



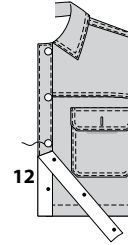
53. Place BUTTONHOLE GUIDE (13) on RIGHT front, having edges of tissue even with finished edges of jacket, as shown. Transfer markings.

Make buttonholes at markings.



54. Place GUIDE FOR BUTTONS (12) on LEFT front, having edges of tissue even with finished edges of jacket, as shown. Transfer markings.

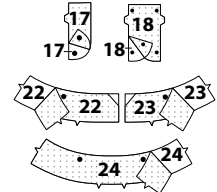
Sew buttons at markings.



**SKIRT C**

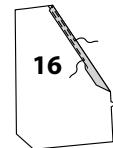
**INTERFACING**

1. Trim corners of INTERFACING, as shown. Fuse interfacing to wrong side of each matching FABRIC section, following manufacturer's instructions.

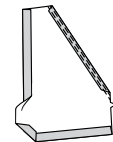


**FRONT AND BACK**

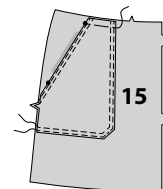
2. Make NARROW HEM at upper side edge of POCKET (16). EDGESTITCH upper side edge.



3. Turn in front and lower seam allowances on pocket, as shown, diagonally folding corners. Press.



4. Pin pocket to FRONT (15), matching symbols, placing pressed edges along pocket line. EDGESTITCH and TOPSTITCH pressed edges. Baste raw edges.



5. Construct fly front as follows:

**A-**Stitch front sections together at center front, ending stitching at large dot. Press seam toward left side.

**B-**Turn in right front opening edge along foldline; press.

**C-**Place closed zipper (face up) under right front opening edge, having pressed edge close to zipper teeth and zipper stop at small dot. Using a zipper foot, baste close to pressed edge.

**D-**With right sides together, fold RIGHT FLY (18) in half lengthwise. Stitch lower edge, as shown. Trim. Turn. Press. Baste raw edges.

**E-**On INSIDE, pin right fly to right front opening edge (over zipper), matching notches and small dots, having raw edges even. Baste along previous basting for zipper.

**F-**On outside, using a zipper foot, stitch close to pressed edge of front through all layers.

**G-FINISH** outer edge of LEFT FLY FACING (17). Pin fly facing to left front opening edge, matching notches, and large dots. Stitch, ending at large dot. Trim. **UNDERSTITCH** fly facing. Turn facing to inside.

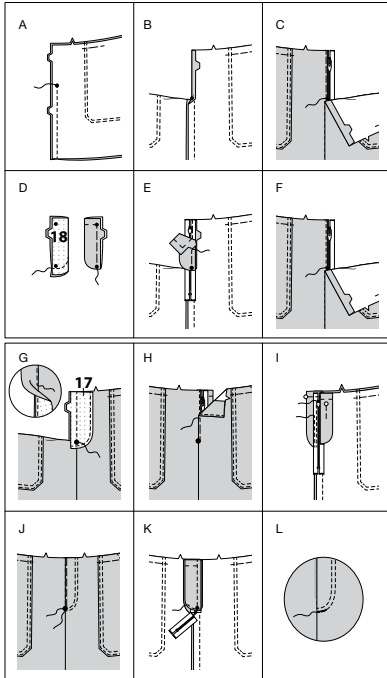
**H-**Lap left front over right, matching centers. Baste close to edge through all thicknesses.

**I-**Pin right fly out of the way. Open out fly facing. Pin remaining zipper tape to fly facing, keeping left front free. Using a zipper foot, stitch in place close to zipper teeth and along center of zipper tape.

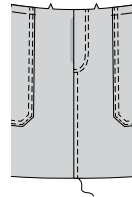
**J-**Turn facing down. On outside, stitch left front along stitching lines, keeping right fly free.

**K-**Turn right fly back in place. On inside, hand tack fly and facing together at lower edge, as shown. Trim away excess zipper tape even with lower edge of fly, if needed.

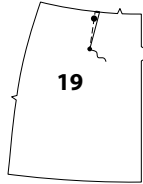
**L-**If desired, on outside, machine-stitch a bar tack across lower end of fly through all thicknesses.



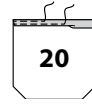
6. **TOPSTITCH** left front seam below stitching.



7. Stitch **DART** in BACK (19). Press dart toward center.



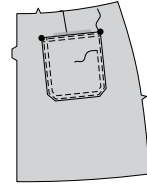
8. Make **NARROW HEM** on upper edge of each **POCKET** (20). Press. **EDGESTITCH** upper edge.



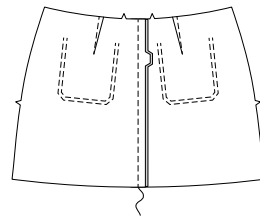
9. Turn in remaining seam allowances, diagonally folding corners. Press.



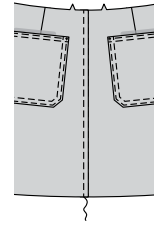
10. Pin pocket to back, matching large dots, placing pressed edges along pocket line. **EDGESTITCH** and **TOPSTITCH** side and lower edges, reinforcing upper ends.



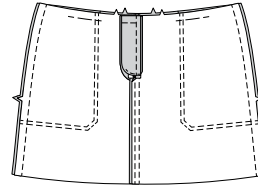
11. Stitch back sections together at center back. Press seam toward left side.



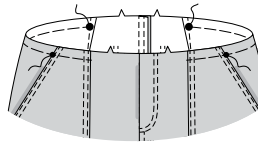
12. **TOPSTITCH** left back seam.



13. Stitch front to back at sides.

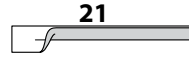


14. **EASE** upper edges of skirt between small and large dots, as shown.



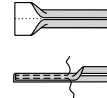
**CARRIERS, WAISTBAND AND FINISHING**

15. Fold **CARRIER** (21) in half, lengthwise with **WRONG** sides together. Press.



16. Open out long edges of carrier and turn them to **WRONG** side so that they meet at the crease. Press.

Fold carrier in half lengthwise, bringing pressed edges together. Stitch close to both long edges.

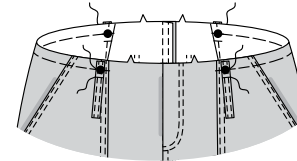


17. Cut carriers into four sections, each 3 1/2"(9cm) long.

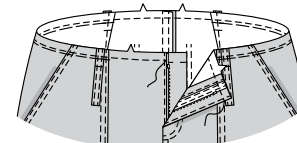


18. Pin carriers to upper edge of skirt, centering one end over large dots, having raw edges even. Baste along waist seamline.

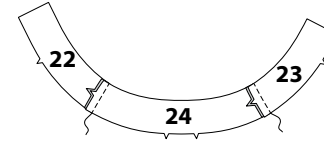
Stitch carriers in place 1/2"(1.3cm) below basting.



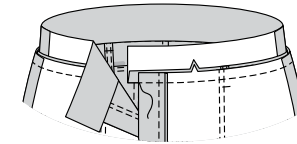
19. **STAYSTITCH** upper edge of skirt.



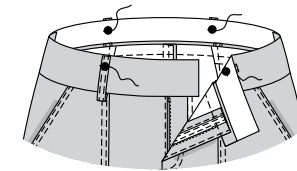
20. Stitch uninterfaced **LEFT FRONT WAISTBAND** (23) section and uninterfaced **RIGHT FRONT WAISTBAND** (22) to **BACK WAISTBAND** (24) at side edges. **NOTE:** Remaining waistband sections will be used as facing.



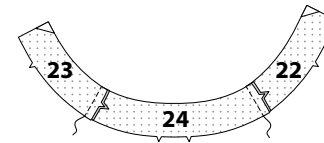
21. Pin waistband to upper edge of skirt, matching centers, seams and notches, clipping skirt where necessary. Baste. Stitch. Trim. Press seam toward waistband.



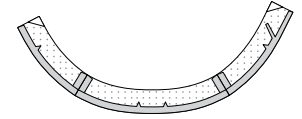
22. Turn up carriers over waistband, centering remaining ends over large dots, having raw edges even. Baste.



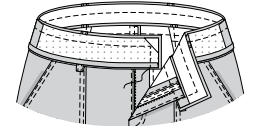
23. Stitch left front waistband **FACING** (23) and right front waistband **FACING** (22) to back waistband facing (24) at side edges.



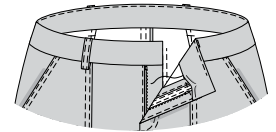
24. Turn in seam allowance on notched edge of waistband facing. Press, easing in fullness where necessary. Trim pressed seam allowance to 3/8"(1cm).



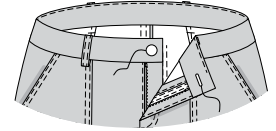
25. Pin waistband facing to waistband, matching centers and seams. Stitch upper and front edges. **TRIM. UNDERSTITCH** facing.



26. Turn facing to inside. Press. **SLIPSTITCH** pressed edge over seam.

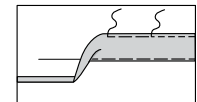


27. Make buttonhole in left waistband at marking. Sew button to right waistband at small dot.



28. Turn up 1 1/4"(3.2cm) hem on lower edge of skirt. Baste close to fold. Turn in 1/4"(6mm) on raw edge. Baste hem in place close to upper edge. Press.

**TOPSTITCH** hem along upper basting.





# Congrats!

You've completed your sewing adventure

---

**SHARE  
YOUR** LOOK



Post your pattern and tag us  
[@simplicity\\_creative\\_group](#) and [#simplicitypatterns](#)  
for a chance to be featured on our social media.

Look for more PDF patterns at [simplicity.com](https://www.simplicity.com)

Have a question or need help with your sewing project call us at  
1-800-782-0323

**McCall's**  
by **design**<sub>group</sub>

McCall's ©2024 a division of IG Design Group Americas Inc. • Atlanta, GA 30342 USA [www.thedesigngroup.com](http://www.thedesigngroup.com) • All Rights Reserved. [www.mccall.com](http://www.mccall.com) • Made in the U.S.A. Fabriqué aux États-Unis.

To be used for individual private home use only and not for commercial or manufacturing purposes. • A usage privé seulement et non à des fins commerciales ou de production en série. • Para uso privado solamente, no se puede utilizar con propósitos de comercialización o de producción en serie.