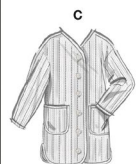


McCall's

M8560



Designed and printed in USA

Scan QR code for a Sew-Along video tutorial.
Scannez le code QR pour un didacticiel vidéo de couture.



Average

MISSES' JACKET WITH SLEEVE AND LENGTH VARIATIONS

Suggested Fabrics: Broadcloth, Charmeuse, Linen, Poplin. **Interlining:** Fleece, Low-loft Batting. **Lining:** Polyester, Rayon.

Notions: A,B,C: Five 7/8" (2.2cm) buttons. **Also for A:** One strip of 7" x 38" (18cm x 97cm) rib knit trim.

Sizes	6	8	10	12	14	16	18	20	22	24
European	32	34	36	38	40	42	44	46	48	50

BODY MEASUREMENTS: Select pattern size based on body measurements

Bust	30½	31½	32½	34	36	38	40	42	44	46	Ins.
Waist	23	24	25	26½	28	30	32	34	37	39	"
Hip-9" below waist	32½	33½	34½	36	38	40	42	44	46	48	"
Back-neck to waist	15½	15¾	16	16¼	16½	16¾	17	17¼	17½	17¾	"

Jacket A,B,C - 45** - 5½yds.; 60** - 5½yds.

Interlining - 45, 60** - 4½yds.

Lining - purchase same amount as for Interlining

FINISHED GARMENT MEASUREMENTS (Includes Design and Wearing Ease)

A,B,C Bust	43	44	45	46½	48½	50½	52½	54½	56½	58½	Ins.
Finished back length from base of neck											
Jacket A,B	28½	28¾	29	29¼	29½	29¾	30	30¼	30½	30¾	Ins.
Jacket C	32½	32¾	33	33¼	33½	33¾	34	34¼	34½	34¾	"

*with nap **without nap

Moins Facile

VESTE AVEC VARIATIONS DE MANCHE ET LONGUEUR POUR JEUNES FEMMES

Tissus Conseillés: Broadcloth, Charmeuse, Toile de lin, Popeline. **Triplure:** Molleton, Ouatine non épaisse. **Doubleure:** Polyester, Rayonne.

Mercrierie: A,B,C: 5 boutons de 2.2cm. **Aussi pour A:** 1 bande de 18cm x 97cm de galon de tricot à côtes.

Tailles	6	8	10	12	14	16	18	20	22	24
Françaises	34	36	38	40	42	44	46	48	50	52
Européen	32	34	36	38	40	42	44	46	48	50

MESURES DU CORPS: Choisissez la taille du patron basée sur les mesures du corps

Poitrine	78	80	83	87	92	97	102	107	112	117	cm
Taille	58	61	64	67	71	76	81	87	94	99	"
Hanches (23cm au-dessous de la taille)											
	83	85	88	92	97	102	107	112	117	122	cm
Dos du cou à la taille	39.5	40	40.5	41.5	42	42.5	43	44	44.5	45	"

Veste A,B,C - 115cm* - 5.2m; 150cm* - 4.7m

Triplure - 115, 150cm** - 3.8m

Doubleure - achetez la même quantité comme pour Triplure

MESURES DES VÊTEMENTS FINI (Motif et aisance de port compris)

A,B,C Poitrine	109	112	114	118	123	128	133	138	144	149	cm
Longueur finie – dos, votre nuque à l'ourlet											
Veste A,B	72	73	74	74	75	76	76	77	77	78	cm
Veste C	83	83	84	84	85	86	86	87	88	88	"

*avec sens **sans sens



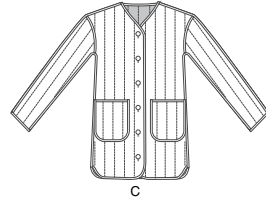
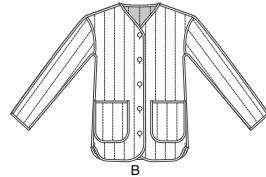
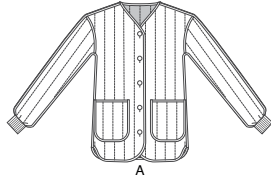
A



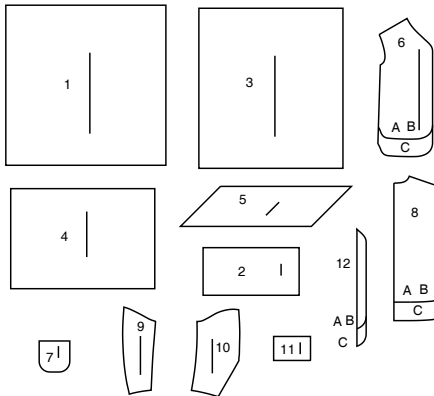
B



C



12 PATTERN PIECES



- 1 BLOCK FOR FRONT QUILTING - A,B,C
- 2 BLOCK FOR POCKET QUILTING - A,B,C
- 3 BLOCK FOR BACK QUILTING - A,B,C
- 4 BLOCK FOR SLEEVE QUILTING - A,B,C
- 5 BINDING - A,B,C
- 6 FRONT - A,B,C
- 7 POCKET - A,B,C
- 8 BACK - A,B,C
- 9 SLEEVE FRONT - A,B,C
- 10 SLEEVE BACK - A,B,C
- 11 SLEEVE BAND - A
- 12 BUTTONHOLE GUIDE - A,B,C

PATTERN MARKINGS

GRAINLINE: Place on straight grain of fabric, parallel to selvage or fold.

FOLDLINE: Place line on fold of fabric.

BUTTONHOLE MARKING: Indicates exact length and placement of buttonholes.

BUTTON MARKING: Indicates button placement.

NOTCHES AND SYMBOLS: For matching seams and construction details.

Indicates the Bustline, Waistline, Hip and/or Biceps. Measurements refer to circumference of Finished Garment (Body Measurement + Wearing Ease + Design Ease). Adjust pattern if necessary. The measurement excludes pleats, tucks, darts and seam allowances.

SEAM ALLOWANCE: 5/8" (1.5cm) included unless otherwise indicated, but not printed on tissue.

ADJUST IF NECESSARY

Lengthen or Shorten at adjustment lines (==) if substantial length is added, you may need to purchase additional fabric.

TO SHORTEN: Crease along adjustment line. Make a fold half the amount needed. Tape in place.

TO LENGTHEN: Slash between adjustment lines. Spread amount as needed, keeping edges parallel. Tape over paper.

When Alteration lines are not on tissue, lengthen or shorten at lower edge.

CUTTING AND MARKING

SHRINK FABRIC if not labeled pre-shrunk. Press.

CIRCLE LAYOUT for View, Size, Fabric Width.

Use **WITH NAP** layout for fabrics with one-way designs, nap, pile or surface shading. Because most knits have surface shading, a with nap layout is used.

For **DOUBLE THICKNESS (WITH FOLD)** - fold fabric with right sides together.

*** DOUBLE THICKNESS (WITHOUT FOLD)** - For fabrics with nap, fold fabric crosswise, right sides together. Mark as shown. Cut along crosswise fold of fabric (A). Turn upper layer 180° so arrows go in same direction and place over lower layer, right sides together (B).

For **SINGLE THICKNESS** - place fabric right side up. (For Fur Pile fabrics, place pile side down.)

★ Cut other pieces first, allowing enough fabric to cut this piece. Open fabric. For "Cut 1" pieces, cut piece once on single layer of fabric with piece face up on right side of fabric.

Pattern may have cutting lines for several sizes. Select the proper cutting line or pattern pieces for your size.

Before **CUTTING** place all pieces on fabric according to layout. Pin. (Layouts show approximate position of pattern pieces; position may vary according to your pattern size.) Cut ACCURATELY, cutting notches outward.

Before removing pattern, **TRANSFER MARKINGS** and lines of construction to Wrong Side of fabric, using the Pin and Chalk, Pencil method or Tracing Paper and Dressmaker Wheel. Markings needed on right side of fabric should be thread traced.

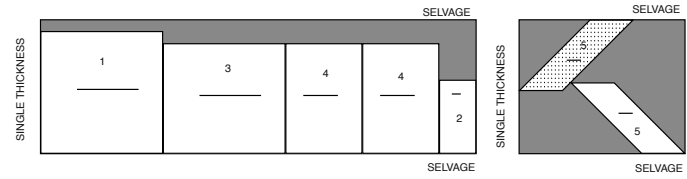
NOTE: Broken-line boxes (a| b| c|) in layouts represent pieces cut by measurements provided.

CUTTING LAYOUTS

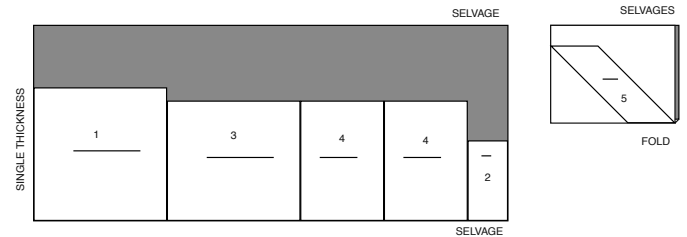
JACKET A,B,C

PIECES 1 2 3 4 5
PIECES 6 7 8 9 10 WILL BE CUT FROM PREPARED QUILTED BLOCKS.
SEE SEWING DIRECTIONS FOR CUTTING AND SEWING.

45" (115CM)
WITH NAP
ALL SIZES



60" (150CM)
WITH NAP
ALL SIZES

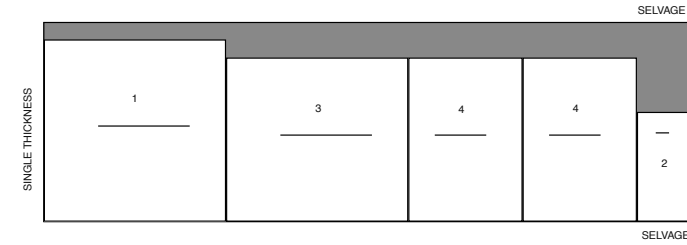


INTERLINING (BATTING)

PIECES 1 2 3 4

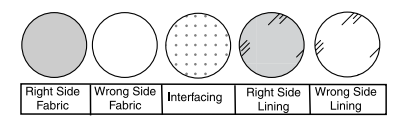
USE SAME LAYOUT FOR LINING.

45" OR 60" (115CM OR 60CM)
WITHOUT NAP
ALL SIZES



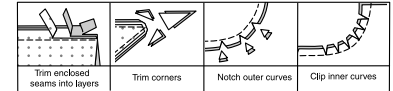
RIGHT SIDE OF PATTERN	WRONG SIDE OF PATTERN	RIGHT SIDE OF FABRIC	WRONG SIDE OF FABRIC
-----------------------	-----------------------	----------------------	----------------------

SEWING INFORMATION
FABRIC KEY



SEAM ALLOWANCES

Use 1/4" (6mm) seam allowances unless otherwise indicated.



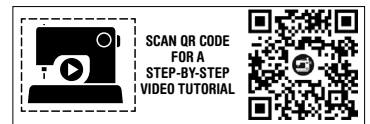
PIN AND FIT

Pin or baste seams, RIGHT SIDE TOGETHER, matching notches. Fit garment before stitching major seams.

PRESS

Press seam allowances flat; then open unless otherwise stated. Clip where necessary so they lie flat.

GLOSSARY



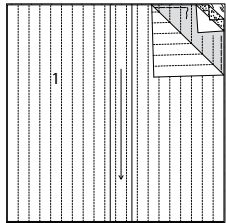
PATTERN PIECES WILL BE IDENTIFIED BY NUMBERS THE FIRST TIME THEY ARE USED.

STITCH 1/4" (1.5CM) SEAMS WITH WRONG SIDES TOGETHER UNLESS OTHERWISE STATED.

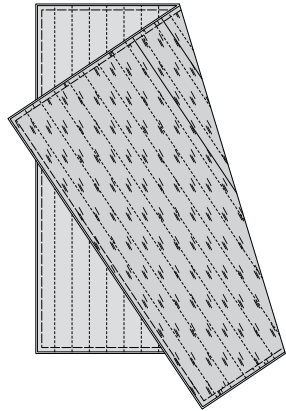
JACKET A, B, C

PREPARATION

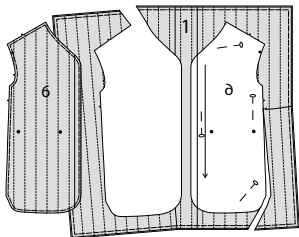
1. Place batting between WRONG sides of BLOCK FOR FRONT QUILTING (1) fabric and lining having raw edges even, as shown. Machine-baste layers together 1/2" (1.3cm) from raw edge. Pin block to fabric. Transfer stitching and center front lines.



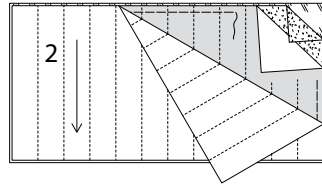
2. On OUTSIDE, stitch along stitching lines through all thicknesses.



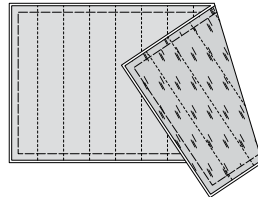
3. On OUTSIDE, pin FRONT (6) to quilting (1) matching centers. Cut along outer solid line. Transfer markings. Baste 1/4" (6mm) from raw edge. To make LEFT front, flip pattern over placing pattern printed side down, pinning LEFT side of FRONT (6) to remaining quilting (1) section, matching centers. Cut along outer solid line and transfer markings. Baste 1/4" (6mm) from raw edge.



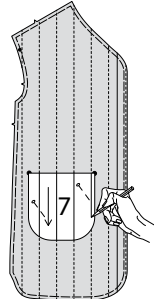
4. Place batting between WRONG sides of BLOCK FOR POCKET QUILTING (2) fabric and lining having raw edges even, as shown. Machine-baste layers together 1/2" (1.3cm) from raw edge. Pin block to fabric. Transfer stitching lines.



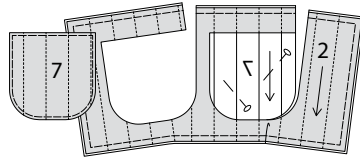
5. On OUTSIDE, stitch along stitching lines through all thicknesses.



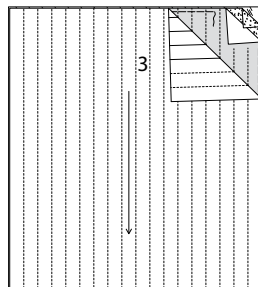
6. To have the appearance of linear lines from top to bottom of finished jacket, pin POCKET (7) pattern piece to quilted front sections, matching large dots. Transfer stitching lines from front to pocket pattern piece.



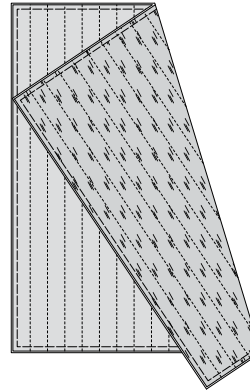
7. On OUTSIDE, pin POCKET (7) to quilting (2) matching transferred stitching lines. Cut along outer solid line. Baste 1/4" (6mm) from raw edge. To make LEFT front pocket, flip pattern over placing pattern printed side down, pinning LEFT side of POCKET (7) to remaining quilting (2) section, matching stitching lines. Cut along outer solid line. Baste 1/4" (6mm) from raw edge.



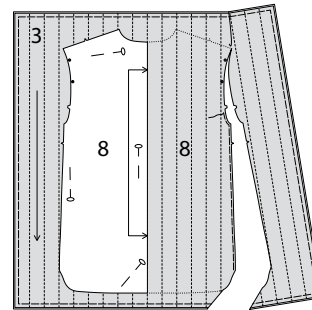
8. Place batting between WRONG sides of BLOCK FOR BACK QUILTING (3) fabric and lining having raw edges even, as shown. Machine-baste layers together 1/2" (1.3cm) from raw edge. Pin block to fabric. Transfer stitching and center back lines.



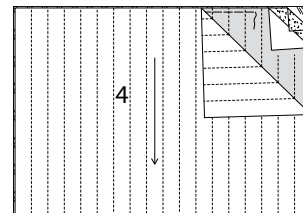
9. On OUTSIDE, stitch along stitching lines through all thicknesses.



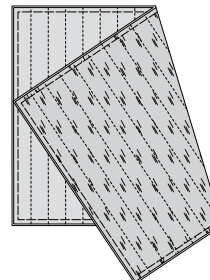
10. On OUTSIDE, pin BACK (8) to quilting (3) matching centers. Transfer markings. To make LEFT back, flip pattern along foldline placing pattern printed side down, pinning LEFT side of BACK (8) to remaining quilting (3) section, matching centers. Cut along outer solid line and transfer markings. Do not cut along foldline. Baste raw edges together.



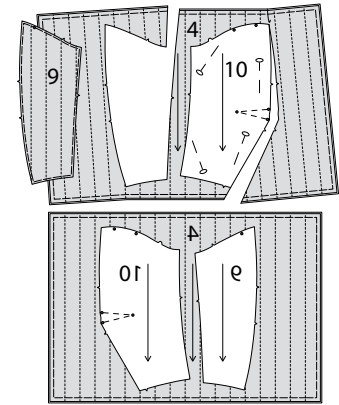
11. For each sleeve, place batting between WRONG sides of BLOCK FOR SLEEVE QUILTING (4) fabric and lining having raw edges even, as shown. Machine-baste layers together 1/2" (1.3cm) from raw edge. Pin block to fabric. Transfer stitching lines.



12. On OUTSIDE, stitch along stitching lines through all thicknesses.

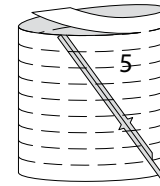


13. On OUTSIDE, pin SLEEVE FRONT (9) and SLEEVE BACK (10) to quilting (4) making sure each piece is parallel with grainline. Cut along outer solid lines. Transfer markings. Baste raw edges together. To make LEFT sleeve, flip pattern pieces over placing pattern printed side down, pinning LEFT side of SLEEVE FRONT (9) and SLEEVE BACK (10) to remaining quilting (4) section, grainlines parallel. Cut along outer solid lines and transfer markings. Machine baste raw edges together.



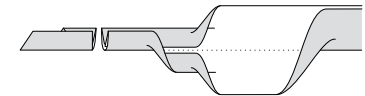
BINDING

14. With RIGHT sides together, fold BINDING (5) into a tube, matching lines and notches. (One width of binding extends beyond the top and bottom end, as shown.) Stitch in a 1/4" (6mm) seam and press open. Cut along bottom of strip and continue cutting in a spiral until the end of the line, creating one continuous strip of bias.



15. To create double fold bias binding, fold the strip lengthwise with WRONG sides together, having long edges 1/8" (3mm) apart, as shown. Press the fold edge, setting in a crease. Open out the fold and turn both long edges to WRONG side just meeting the crease, press. Fold the strip along the crease encasing the turned edges. Trim ends so that they are straight, as shown.

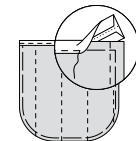
Note that one edge is wider than the other. To ENCASE the edge of a piece when directed, slip the edge between the folds of the bias tape placing the raw edge against the center crease and the wider folded edge of the tape on the INSIDE of the piece. Stitch the tape in place from the OUTSIDE, being sure to catch in the folded edge on the INSIDE.



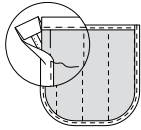
JACKET

NOTE: BINDING (5) and STITCHED SEAM ALLOWANCES will be shown in white for clarity in the following illustrations.

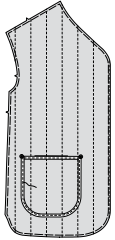
16. Encase upper edge of POCKET (7) with binding having raw edges even. Stitch.



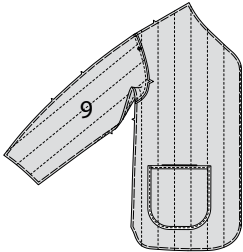
17. To encase the remaining edge of pocket, cut a piece of binding the length of remaining edge, plus 1/2" (1cm). Open out the single fold and turn under ends 1/4" (6mm). Pre-shape the bias along curves by stretching the single folded edge with a steam iron. Encase edge. Stitch close to inner edge of binding.



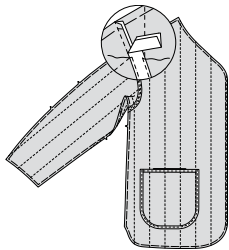
18. On OUTSIDE, pin pocket to FRONT (6) placing upper corners at large dots. Stitch side and lower edges over previous stitching.



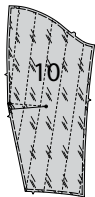
19. With WRONG sides together, pin front to SLEEVE FRONT (9), matching small dots and notches. Stitch. Trim seam. Press seam toward front.



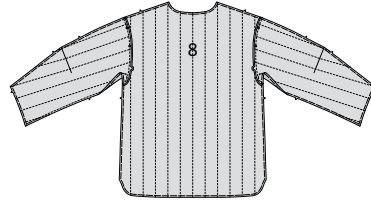
20. Cut a piece of binding the length of the armhole seam. Pin binding to seam, placing outer edge along seamline, covering the seam allowance. Edgestitch close to both long edges.



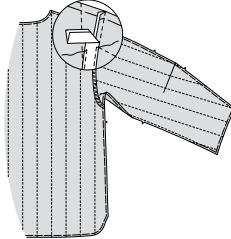
21. To make dart in SLEEVE BACK (10), with RIGHT sides together, fold the fabric through the center of the dart, bringing broken lines and small dots together. On INSIDE, place pins at RIGHT angles to the broken lines. Stitch the dart from wide end to point. Press the dart flat along the stitching to "blend" the stitches, then press dart toward lower edge.



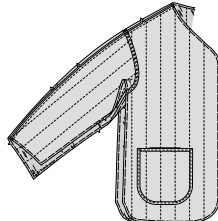
22. With WRONG sides together, pin sleeve back to BACK (8) at armhole edge, matching small dots and notches. Stitch. Trim seam. Press seam toward back.



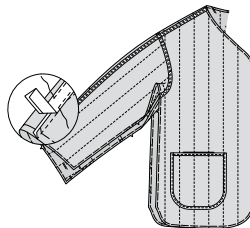
23. Cut a piece of binding the length of the armhole seam. Pin binding to seam, placing outer edge along seamline, covering the seam allowance. Edgestitch close to both long edges.



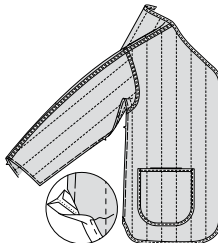
24. With WRONG sides together, pin front to back at entire shoulder edge, matching armhole seams. Stitch. Trim seam. Press seam toward back.



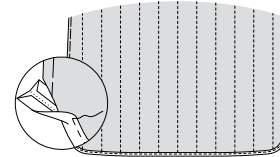
25. Cut a piece of binding the length of the entire shoulder seam. Pin binding to seam, placing front edge along seamline, covering the seam allowance. Edgestitch close to both long edges.



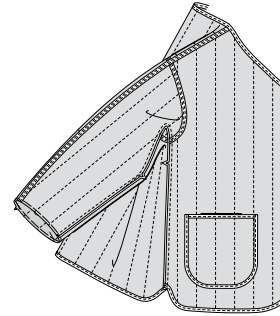
26. Cut a piece of binding the length of the neck, front, and lower front edge. Pre-shape the bias along curves by stretching the single folded edge with a steam iron. Encase edges in binding, having raw edges even. On OUTSIDE, stitch binding in place close to inner edge.



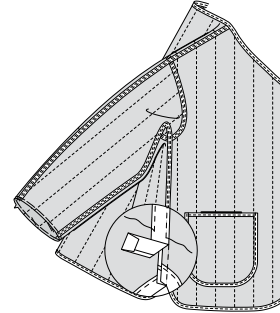
27. Cut a piece of binding the length of the lower back edge. Pre-shape the bias along curves by stretching the single folded edge with a steam iron. Encase lower edge of back in binding, having raw edges even. On OUTSIDE, stitch binding in place close to inner edge.



28. With WRONG sides together, stitch front to back along entire underarm and side edges. Trim seam. Press seam toward back.

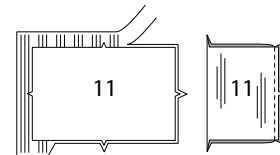


29. Cut a piece of binding the length of the underarm seam, plus 1/4" (6mm). Pin binding to seam with raw edges even on lower edge of sleeve, turning under 1/4" (6mm) at lower edge of side seam, placing front edge along seamline, covering the seam allowance. Edgestitch close to both long edges.

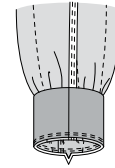


SLEEVE BAND A

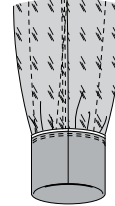
30. Open out rib knit section if necessary. Pin SLEEVE BAND (11) to rib knit strip, matching foldline on strip to foldline on pattern piece. Transfer markings. Cut out two sections. Stitch ends of sleeve band together.



31. Fold sleeve band in half with WRONG sides together and raw edges even; press. Pin. On OUTSIDE, pin band to lower edge of sleeve, matching underarm seam and notches, having raw edges even. Stitch stretching the band to fit. Stitch again 1/8" (3mm) from first stitching within the seam allowance.

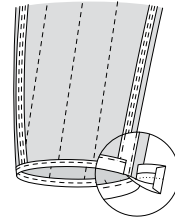


32. Press seam toward sleeve, pressing band out.



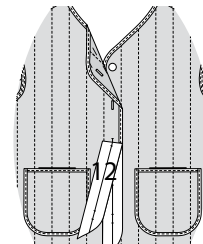
SLEEVE FINISH B, C

33. Cut a piece of binding the length of the lower sleeve edge, plus 1/2" (1.3cm). Encase lower edge of sleeve in binding, turning under one end 1/4" (6mm) and lapping at underarm seam. On OUTSIDE, stitch binding in place close to inner edge.



FINISHING

34. Pin BUTTONHOLE GUIDE (12) to OUTSIDE of RIGHT front having upper edges even, matching centers. Transfer markings. Make buttonholes at markings. Lap RIGHT front over LEFT front, matching centers. Sew buttons to LEFT front under buttonholes.





Congrats!

You've completed your sewing adventure

**SHARE
YOUR** LOOK



Post your pattern and tag us
[@simplicity_creative_group](#) and [#simplicitypatterns](#)
for a chance to be featured on our social media.

Look for more PDF patterns at [simplicity.com](https://www.simplicity.com)

Have a question or need help with your sewing project call us at
1-800-782-0323

McCall's
by **design**_{group}

McCall's ©2024 a division of IG Design Group Americas Inc. • Atlanta, GA 30342 USA www.thedesigngroup.com • All Rights Reserved. www.mccall.com • Made in the U.S.A. Fabriqué aux États-Unis.
To be used for individual private home use only and not for commercial or manufacturing purposes. • A usage privé seulement et non à des fins commerciales ou de production en série. • Para uso privado solamente, no se puede utilizar con propósitos de comercialización o de producción en serie.