

McCall's

M8559



Designed and  
printed in USA

Average

MISSES' AND WOMEN'S SKIRT IN THREE LENGTHS AND TIE BELT

**Suggested Fabrics:** Medium weight stretch wovens (20% crossgrain stretch) such as: Stretch Denim, Stretch Sateen. **Lining:** Cotton Broadcloth. **Interfacing:** Lightweight Fusible Knit.

**Notions: A, B, C:** One 6" (15cm) metal zipper (cut to fit), one 3/4" (1.5cm) button, heavy duty top-stitch thread.

MISSES' SIZES	10	12	14	16	18
EUROPEAN	36	38	40	42	44

BODY MEASUREMENTS: Select pattern size based on body measurements

Bust	32½	34	36	38	40	Ins.
Waist	25	26½	28	30	32	"
Hip	34½	36	38	40	42	"
Back-neck to waist	16	16¼	16½	16¾	17	"

Lining A, B, C	45***	¾ yd.
Interfacing	20"	1¼ yds.

Skirt A	60**	1	1	1½	1½	1½	Yds.
Skirt B	60**	1½	1½	1½	1½	1½	Yds.
Skirt C	60**	1½	1½	1½	1½	1½	Yds.

WOMEN'S SIZES	20W	22W	24W	26W	28W	30W	32W	34W	36W	38W
EUROPEAN	46	48	50	52	54	56	58	60	62	64

BODY MEASUREMENTS: Select pattern size based on body measurements

Bust	42	44	46	48	50	52	54	56	58	60	Ins.
Waist	35	37	39	41½	44	46½	49	51½	53	54½	"
Hip	44	46	48	50	52	54	56	58	60	62	"
Back-neck to waist	17¼	17¾	17½	17¾	17¾	17¾	18	18½	18½	18½	"

Lining A, B, C	45***	¾ yd.
Interfacing	20"	1¼ yds.

Skirt A	60**	1¼	1½	1½	1½	1½	1½	1½	1½	1½	Yds.
Skirt B	60**	1½	1½	1½	1½	1½	1½	1½	1½	1½	Yds.
Skirt C	60**	1½	1½	1½	1½	1½	2	2	2	2	Yds.

NOTE: Please refer to the English guide for FINISHED GARMENT MEASUREMENTS.

\*with nap \*\*without nap

Moins Facile

JUPE EN TROIS LONGUEURS ET CEINTURE À NOUER POUR JEUNES FEMMES ET FEMMES

**Tissus Conseillés:** Tissus tissés extensibles de poids moyen (20% en largeur) tels que: Denim extensible, Satinette extensible. **Doublure:** Broadcloth de coton. **Entoilage:** Tricot thermocollant léger.

**Mercerie: A, B, C:** 1 fermeture à glissière en métal de 15cm (coupée pour ajuster), 1 bouton de 1.5cm, fil de surpiqure résistant.

TAILLES (J. FEMMES)	10	12	14	16	18
FRANÇAISES	38	40	42	44	46
EUROPÉEN	36	38	40	42	44

MESURES DU CORPS: Choisissez la taille du patron basée sur les mesures du corps

Poitrine	83	87	92	97	102	cm
Taille	64	67	71	76	81	"
Hanches	88	92	97	102	107	"
Dos du cou à la taille	40.5	41.5	42	42.5	43	"

Doublure A, B, C	115cm**	0.6m
Entoilage	51cm	1.1m

Jupe A	150cm*	0.9	0.9	1.0	1.0	1.1	m
Jupe B	150cm*	1.3	1.3	1.4	1.5	1.5	m
Jupe C	150cm*	1.1	1.1	1.1	1.1	1.1	m

TAILLES (FEMMES)	20W	22W	24W	26W	28W	30W	32W	34W	36W	38W
FRANÇAISES	48	50	52	54	56	58	60	62	64	66
EUROPÉEN	46	48	50	52	54	56	58	60	62	64

MESURES DU CORPS: Choisissez la taille du patron basée sur les mesures du corps

Poitrine	107	112	117	122	127	132	137	142	147	152	cm
Taille	89	94	99	105	112	118	124	131	134	138	"
Hanches	112	117	122	127	132	137	142	147	152	157	"
Dos du cou à la taille	44	44	44.5	45	45	45.5	46	46	46.5	47	"

Doublure A, B, C	115cm**	0.6m
Entoilage	51cm	1.6m

Jupe A	150cm*	1.1	1.1	1.3	1.3	1.4	1.4	1.5	1.5	1.6	1.6	m
Jupe B	150cm*	1.7	1.7	1.7	1.7	1.7	1.7	1.7	1.7	1.7	1.7	m
Jupe C	150cm*	1.5	1.5	1.5	1.6	1.7	1.8	1.8	1.8	1.8	1.8	m

NOTE: S'il vous plaît, reportez-vous au guide en français pour les MESURES DU VÊTEMENTS FINI.

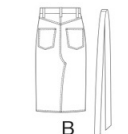
\*avec sens \*\*sans sens



A



B



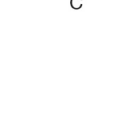
C



A



B



C

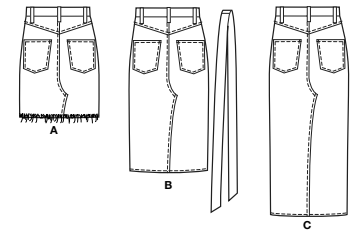
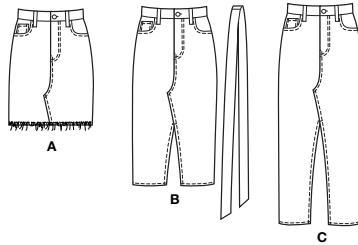
M8559

Page 1 of 4

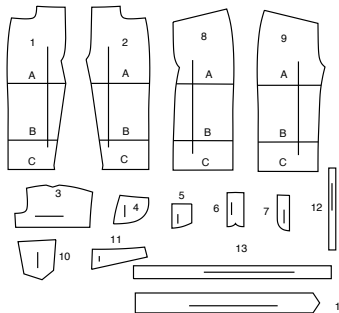
**McCall's**<sup>®</sup>

English

1-800-782-0323



## 14 PATTERN PIECES



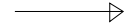
1 RIGHT FRONT - A,B,C  
2 LEFT FRONT - A,B,C  
3 SIDE FRONT AND POCKET - A,B,C  
4 SIDE FRONT - A,B,C  
5 RIGHT POCKET - A,B,C  
6 RIGHT FLY - A,B,C  
7 LEFT FLY FACING - A,B,C

8 RIGHT BACK - A,B,C  
9 LEFT BACK - A,B,C  
10 POCKET - A,B,C  
11 YOKE BACK - A,B,C  
12 CARRIER - A,B,C  
13 WAISTBAND - A,B,C  
14 TIE BELT - B

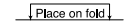
TAILLES (L. FEMMES)	10	12	14	16	18
FRANÇAISES	38	40	42	44	46
EUROPÉEN	36	38	40	42	44
MESURES DES VÊTEMENTS FINI (Motif et aisance de port compris)					
A,B,C Ranches	85	89	94	99	104
Largeur à l'ourlet					
Jupe A	88	91	97	102	107
Longueur finie - dos, taille à l'ourlet (les jupes reposent 2.5cm dessous de la taille)	44	44	44	44	44
Jupe B	72	72	72	72	72
Jupe C	88	88	88	88	88

TAILLES (FEMMES)	20W	22W	24W	26W	28W	30W	32W	34W	36W	38W
FRANÇAISES	48	50	52	54	56	58	60	62	64	66
EUROPÉEN	46	48	50	52	54	56	58	60	62	64
MESURES DES VÊTEMENTS FINI (Motif et aisance de port compris)										
A,B,C Ranches	110	115	120	125	130	135	140	145	150	156
Largeur à l'ourlet										
Jupe A	111	116	121	126	131	137	142	147	152	157
Longueur finie - dos, taille à l'ourlet (les jupes reposent 2.5cm dessous de la taille)	44	44	44	44	44	44	44	44	44	44
Jupe B	74	74	74	74	74	74	74	74	74	74
Jupe C	89	89	89	89	89	89	89	89	89	89

## PATTERN MARKINGS



**GRAINLINE:** Place on straight grain of fabric, parallel to selvage or fold.



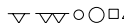
**FOLDLINE:** Place line on fold of fabric.



**BUTTONHOLE MARKING:** Indicates exact length and placement of buttonholes.



**BUTTON MARKING:** Indicates button placement.



**NOTCHES AND SYMBOLS:** For matching seams and construction details.



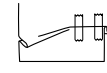
Indicates the Bustline, Waistline, Hip and/or Biceps. Measurements refer to circumference of Finished Garment (Body Measurement + Wearing Ease + Design Ease). Adjust pattern if necessary. The measurement excludes pleats, tucks, darts and seam allowances.

**SEAM ALLOWANCE:** 5/8" (1.5cm) included unless otherwise indicated, but not printed on tissue.

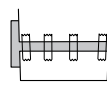
## ADJUST IF NECESSARY

Lengthen or Shorten at adjustment lines (==) or where indicated on pattern. If substantial length is added, you may need to purchase additional fabric.

**TO SHORTEN:** Crease along adjustment line. Make a fold half the amount needed. Tape in place.



**TO LENGTHEN:** Slash between adjustment lines. Spread amount as needed, keeping edges parallel. Tape over paper.



When Alteration lines are not on tissue, lengthen or shorten at lower edge.

## CUTTING AND MARKING

**SHRINK FABRIC** if not labeled pre-shrunk. Press.

**CIRCLE LAYOUT** for View, Size, Fabric Width.

Use **WITH NAP** layout for fabrics with one-way designs, nap, pile or surface shading. Because most knits have surface shading, a with nap layout is used.

For **DOUBLE THICKNESS (WITH FOLD)** - fold fabric with right sides together.

**\* DOUBLE THICKNESS (WITHOUT FOLD)** - For fabrics with nap, fold fabric crosswise, right sides together. Mark as shown. Cut along crosswise fold of fabric (A). Turn upper layer 180° so arrows go in same direction and place over lower layer, right sides together (B).

For **SINGLE THICKNESS** - place fabric right side up. (For Fur Pile fabrics, place pile side down.)

★ Cut other pieces first, allowing enough fabric to cut this piece. Open fabric. For "Cut 1" pieces, cut piece once on single layer of fabric with piece face up on right side of fabric.

Pattern may have cutting lines for several sizes. Select the proper cutting line or pattern pieces for your size.

Before **CUTTING** place all pieces on fabric according to layout. Pin. (**Layouts show approximate position of pattern pieces; position may vary according to your pattern size.**) Cut **ACCURATELY**, cutting notches outward.

Before removing pattern, **TRANSFER MARKINGS** and lines of construction to Wrong Side of fabric, using the Pin and Chalk Pencil method or Tracing Paper and Dressmaker Wheel. Markings needed on right side of fabric should be thread traced.

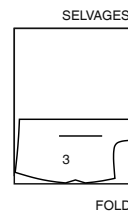
**NOTE:** Broken-line boxes (a! b! c!) in layouts represent pieces cut by measurements provided.

## CUTTING LAYOUTS

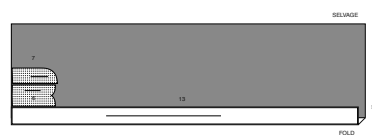
RIGHT SIDE OF PATTERN	WRONG SIDE OF PATTERN	RIGHT SIDE OF FABRIC	WRONG SIDE OF FABRIC
-----------------------	-----------------------	----------------------	----------------------

**LINING A,B,C**  
USE PIECE: 3

45" (115 CM)  
WITHOUT NAP  
ALL SIZES

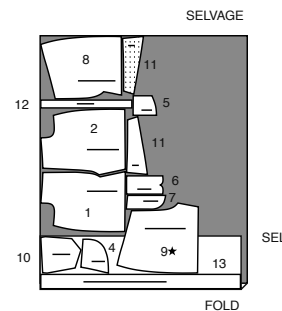
**INTERFACING**  
USE PIECES: 6 7 13

20" (51 CM)  
ALL SIZES

**A,B,C SKIRT - SIZED FOR STRETCH WOVENS ONLY****SKIRT A**

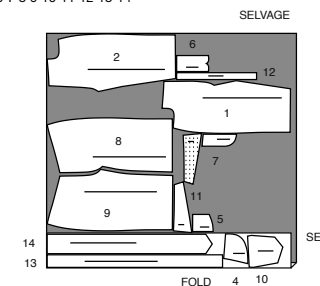
USE PIECES: 1 2 4 5 6 7 8 9 10 11 12 13

60" (150 CM)  
WITH NAP  
SIZES 10 12 14 16 18

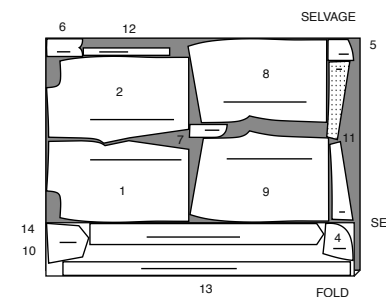
**SKIRT B**

USE PIECES: 1 2 4 5 6 7 8 9 10 11 12 13 14

60" (150 CM)  
WITH NAP  
SIZES 10 12 14 16 18

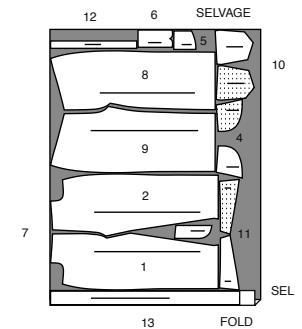


60" (150 CM)  
WITH NAP  
SIZES 20W 22W 24W 26W 28W 30W 32W 34W 36W 38W

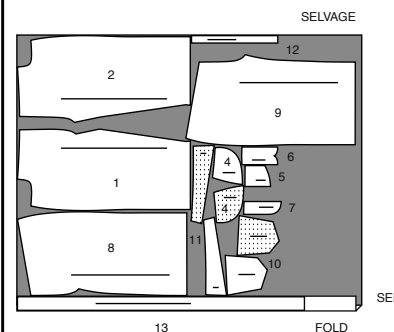
**SKIRT C**

USE PIECES: 1 2 4 5 6 7 8 9 10 11 12 13

60" (150 CM)  
WITH NAP  
SIZES 10 12 14 16 18

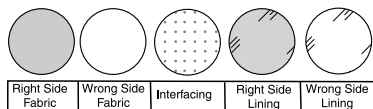


60" (150 CM)  
WITH NAP  
SIZES 20W 22W 24W 26W 28W 30W 32W 34W 36W 38W



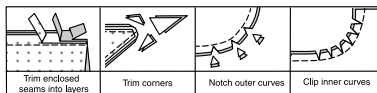
## SEWING INFORMATION

### FABRIC KEY



### SEAM ALLOWANCES

Use 5/8" (1.5cm) seam allowances unless otherwise indicated.



### PIN AND FIT

Pin or baste seams, **RIGHT SIDE TOGETHER**, matching notches. Fit garment before stitching major seams.

### PRESS

Press seam allowances flat; then open unless otherwise stated. Clip where necessary so they lie flat.

## GLOSSARY

Sewing methods in **BOLD TYPE** have Sewing Tutorial Video available. Scan **QR CODE** to watch videos:

**FINISH** - See **finish seam allowances** video.

**NARROW HEM** - See **sewing narrow hems** video.

**EDGE STITCH** - See **how to edgestitch** video.

**REINFORCE** - See **how to reinforce** video.

**STAYSTITCH** - See **how to do stay-stitching** video.

**TOPSTITCH** - See **how to topstitch** video.

**UNDERSTITCH** - See **how to understitch** video.

**SLIPSTITCH** - See **how to slipstitch** video.

**TACK** - See **Hand Stitches: "how to tack"** video.

**TRIM** - See **Seams: "How to Sew: Trim, Clip, and Layer Seams"** video.

### SEWING TUTORIALS



Build your skills viewing short, easy-to-follow videos at [simplicity.com/sewingtutorials](http://simplicity.com/sewingtutorials)

**PATTERN PIECES WILL BE IDENTIFIED BY NUMBERS THE FIRST TIME THEY ARE USED.**

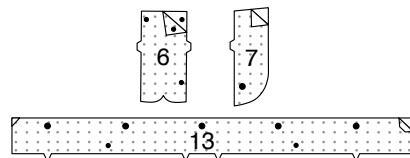
**STITCH SEAMS WITH RIGHT SIDES TOGETHER UNLESS OTHERWISE STATED.**

## SKIRT A, B, C

**NOTE:** Illustrated for **View A**, unless otherwise indicated.

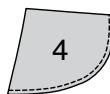
### INTERFACING

**1.** Trim corners of **INTERFACING**, as shown. Fuse interfacing to wrong side of each matching **FABRIC** section, following manufacturer's instructions.

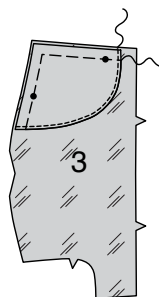


### FRONT AND BACK

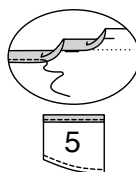
**2. FINISH** lower curved edge of **SIDE FRONT** (4).



**3.** With **RIGHT** sides up, pin side front to upper edge of **SIDE FRONT AND POCKET** (3), matching symbols. Stitch close to finished edge. Baste raw edges.



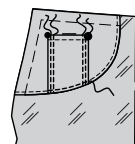
**4. FINISH** lower curved edge of **RIGHT POCKET** (5). Make 7/8" (2.2cm) **NARROW HEM** at upper edge of right pocket.



**5.** Turn in seam allowance on side edges of right pocket. Press.

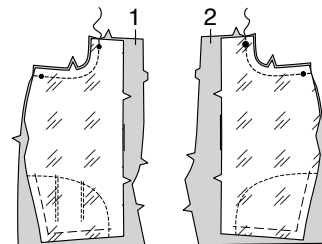


**6.** Pin right pocket to right side front and pocket section, matching symbols. **EDGE STITCH** and **TOPSTITCH** side edges, reinforcing upper ends. **EDGE STITCH** lower edge.

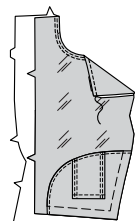


**7.** With **RIGHT** sides together, pin side front and pocket to **RIGHT FRONT** (1) and **LEFT FRONT** (2) sections matching small dots and notches. Stitch. **TRIM.**

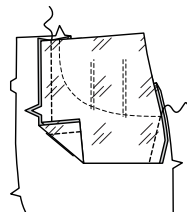
**UNDERSTITCH** pocket.



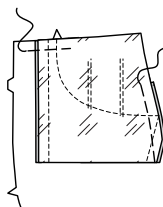
**8. TOPSTITCH** pocket opening.



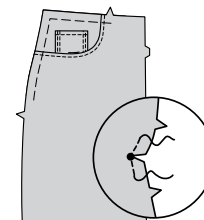
**9.** With **RIGHT** sides together, fold side front and pocket along foldline. Stitch front notched edge and lower side edge, keeping skirt free.



**10.** Baste upper and side edges.



**11. REINFORCE** right front through lower small dot, as shown. Clip to small dot.



**12.** Construct fly front as follows:

**A**-Stitch front sections together at center front between large dots. Press seam toward left side.

**B**-Turn in right front opening edge along foldline; press.

**C**-Place closed zipper (face up) under right front opening edge, having pressed edge close to zipper teeth and zipper stop at small dot. Using a zipper foot, baste close to pressed edge.

**D**-With **RIGHT** sides together, fold **RIGHT FLY** (6) along foldline. Stitch lower edge in a 3/8" (1cm), as shown. Trim. Turn. Press. Baste raw edges.

**E**-On **INSIDE**, pin right fly to right front opening edge (over zipper), matching notches and small dots, having raw edges even. Baste along previous basting for zipper.

**F**-On outside, using a zipper foot, stitch close to pressed edge of front through all layers.

**G-FINISH** outer edge of **LEFT FLY FACING** (7). Pin fly facing to left front opening edge, matching notches, and large dots. Stitch, ending at large dot. Trim. **UNDERSTITCH** fly facing. Turn facing to inside.

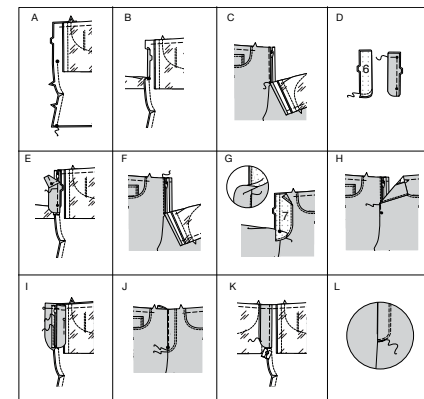
**H**-Lap left front over right, matching centers. Baste close to edge through all thicknesses.

**I**-Pin right fly out of the way. Open out fly facing. Pin remaining zipper tape to fly facing, keeping left front free. Using a zipper foot, stitch in place close to zipper teeth and along center of zipper tape.

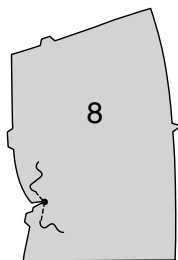
**J**-Turn facing down. On outside, stitch left front along stitching lines, keeping right fly free.

**K**-Turn right fly back in place. On inside, hand **TACK** fly and facing together at lower edge, as shown. Trim away excess zipper tape even with lower edge of fly, if needed.

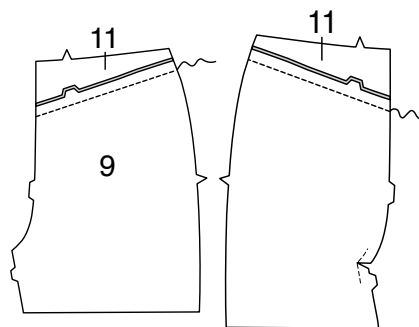
**L**-If desired, on outside, machine-stitch a bar tack across lower end of fly through all thicknesses.



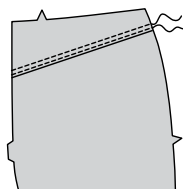
**13. REINFORCE** inner corner of RIGHT BACK (8) through small dot, as shown. Clip to small dot.



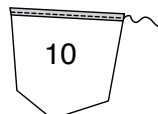
**14.** With RIGHT sides together, pin YOKE BACK (11) sections to upper edge of right back and LEFT BACK (9), matching notches. Stitch. Press seam toward yoke.



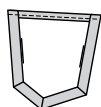
**15. EDGESTITCH** and **TOPSTITCH** yoke back seam.



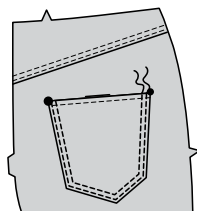
**16.** Make 7/8" (2.2cm) **NARROW HEM** at upper edge of POCKET (10).



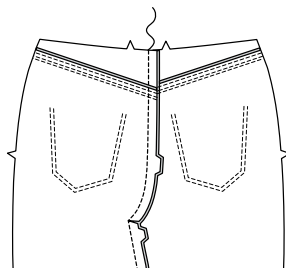
**17.** Turn in seam allowances on side and lower edges of pocket. Press.



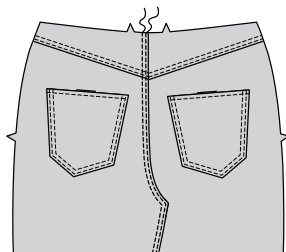
**18.** Pin pocket to back, matching symbols. **EDGESTITCH** and **TOPSTITCH** side and lower edges, reinforcing upper ends.



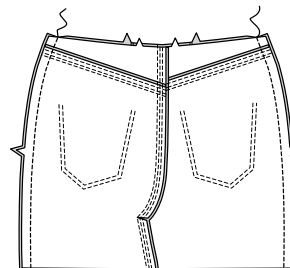
**19.** Stitch back sections together at center back. Press seam toward left side.



**20. EDGESTITCH** and **TOPSTITCH** left back seam.



**21.** Stitch front to back at sides.

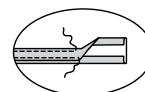


### CARRIERS, WAISTBAND AND FINISHING

**22.** Turn in 1/4" (6mm) on long edges of CARRIERS (12); press.



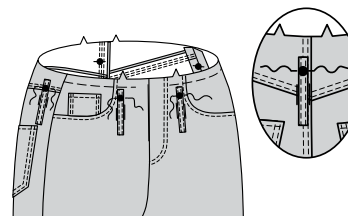
**23.** With **WRONG** sides together, fold carriers in half lengthwise, having edges even; press. **EDGESTITCH**, as shown.



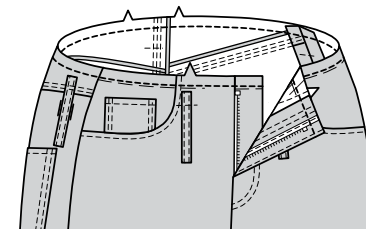
**24.** Cut carriers into five sections, each 3 1/2" (9cm) long.



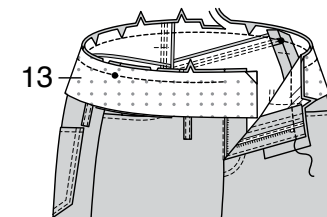
**25.** Pin carriers to upper edge of skirt, centering one end 5/8" (1.5cm) over large dots, having raw edge toward upper edge. Stitch in place.



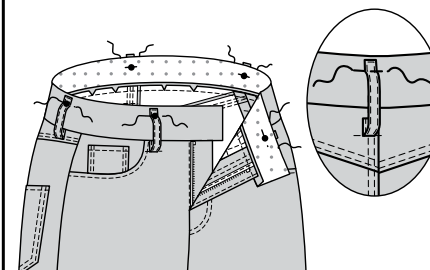
**26. STAYSTITCH** upper edge of skirt.



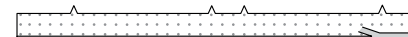
**27.** With **RIGHT** sides together, pin one **WAISTBAND** (13) to upper edge of skirt, matching centers and notches, placing small dots at side seams, clipping skirt where necessary. Stitch. **TRIM**. Press seam toward waistband. **NOTE:** Remaining waistband section will be used as facing.



**28.** Turn up carriers over waistband. Pin remaining ends of carriers to waistband, centering over small dots, having raw edges even. Baste.

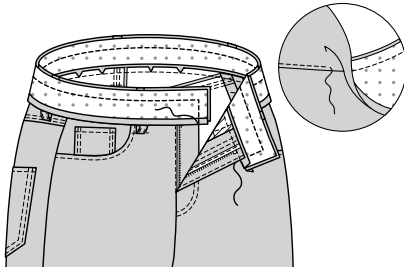


**29.** Turn in seam allowance on lower edge of waistband **FACING**. Press. Trim pressed seam allowance to 3/8" (1cm).

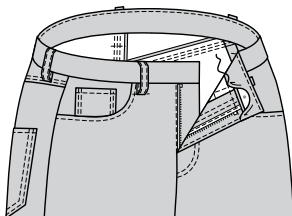


**30.** With RIGHT sides together, pin waistband facing to waistband, matching centers and symbols. Stitch front and upper edges. **TRIM.**

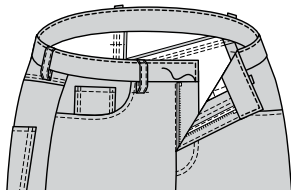
**UNDERSTITCH** facing.



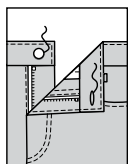
**31.** Turn facing to INSIDE. Press. **SLIPSTITCH** pressed edge over seam.



**32.** **EDGE****STITCH** waistband and ends of carriers, as shown.

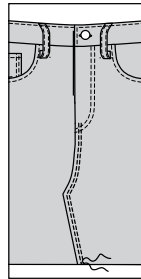


**33.** Make buttonhole in waistband at marking. Sew button to waistband at small dot.

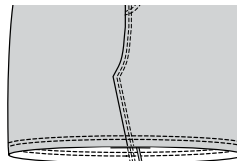


**VIEW A:**

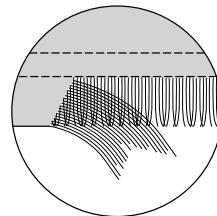
**34.** **EDGE****STITCH** and **TOPSTITCH** left front seam, as shown.



**35.** Stitch across lower edge of skirt 1/2" (1.3cm) above lower edge. Stitch again 1/4" (6mm) above previous stitching.



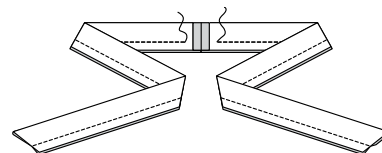
**36.** To create fringe, remove threads from lower edge of skirt. To remove, pull out fabric thread one at a time, up to stitching and in the same direction.



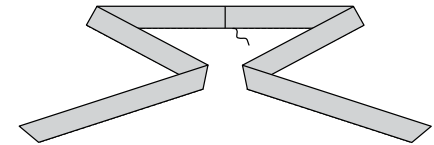
**VIEW B:**

**37.** Stitch **TIE BELT** (14) sections together at notched edge.

With right sides together, fold belt in half lengthwise. Stitch, leaving opening for turning. **TRIM.**

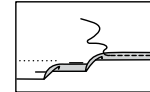


**38.** Turn RIGHT side out. Press. **SLIPSTITCH** opening.

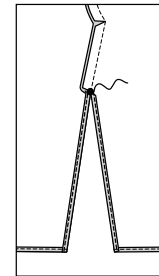


**VIEWS B, C:**

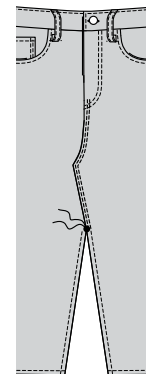
**39.** Make 7/8" (2.2cm) **NARROW HEM** at lower edge of skirt.



**40.** Clip right front seam allowance to large dot, as shown. Make **NARROW HEM** on front opening edges, pivoting across seam at large dot.



**41.** **EDGE****STITCH** and **TOPSTITCH** left front seam, connecting with hem stitching, pivoting to seam, as shown.





# Congrats!

You've completed your sewing adventure

---

## SHARE YOUR LOOK



Post your pattern and tag us  
[@simplicity\\_creative\\_group](#) and [#simplicitypatterns](#)  
for a chance to be featured on our social media.

Look for more PDF patterns at [simplicity.com](https://www.simplicity.com)

Have a question or need help with your sewing project call us at  
1-800-782-0323

**McCall's**  
by **design**<sub>group</sub>

McCall's ©2024 a division of IG Design Group Americas Inc. • Atlanta, GA 30342 USA [www.thedesigngroup.com](http://www.thedesigngroup.com) • All Rights Reserved. [www.mccall.com](http://www.mccall.com) • Made in the U.S.A. Fabriqué aux États-Unis.

To be used for individual private home use only and not for commercial or manufacturing purposes. • A usage privé seulement et non à des fins commerciales ou de production en série. • Para uso privado solamente, no se puede utilizar con propósitos de comercialización o de producción en serie.