

McCall's

M8558



Scan QR code for a **Sew-Along** video tutorial.
Scannez le code QR pour un didacticiel vidéo de couture.

Designed and
printed in USA

Easy

MISSES' KNIT SKIRT IN THREE LENGTHS

Suggested Fabrics: Moderate Stretch Knits (35% cross grain) such as French Terry, Ponte, Sweatshirt Fleece. See Stretch Gauge.

Notions: A,B,C: 1½ yds. (1.3m) of 1¼" (3cm) elastic.

Sizes	8	10	12	14	16	18	20	22	24	26
European	34	36	38	40	42	44	46	48	50	52

BODY MEASUREMENTS: Select pattern size based on body measurements

Bust	31½	32½	34	36	38	40	42	44	46	48	Ins.
Waist	24	25	26½	28	30	32	34	37	39	41	"
Hip-9" below waist	33½	34½	36	38	40	42	44	46	48	50	"
Back-neck to waist	15¾	16	16¼	16½	16¾	17	17¼	17½	17¾	18	"

Skirt A	60**	¾	¾	¾	¾	¾	¾	¾	¾	¾	7/8	Yds.
Skirt B	60**	2	2	2	2	2	2	2	2	2	2	Yds.
Skirt C	60**	2½	2½	2½	2½	2½	2¾	3½	3¾	3¾	3½	Yds.

FINISHED GARMENT MEASUREMENTS (Includes Design and Wearing Ease)

A,B,C Hip 34 35 36½ 38½ 40½ 42½ 44½ 46½ 48½ 50½ Ins.

Width, lower edge

Skirt A	33	34	35½	37½	39½	41½	43½	45½	47½	49½	Ins.
Skirt B	81½	82½	84	86	88	90	92	94	96	98	"

Finished back length from waist

Skirt A (sits 1" below waist)	15	15	15	15	15	15	15	15	15	15	Ins.
Skirt B (sits 1" below waist)	33	33	33	33	33	33	33	33	33	33	Ins.

Skirt C (sits 1" below waist)	42	42	42	42	42	42	42	42	42	42	Ins.
-------------------------------	----	----	----	----	----	----	----	----	----	----	------

Facile

JUPE EN TRICOT EN TROIS LONGUEURS POUR JEUNES FEMMES

Tissus Conseillés: Tricot à élasticité moyenne (35% en largeur) tels que Tissu Éponge, Ponte, Jersey molletonné pour sweat-shirt. Reportez-vous au taux d'élasticité.

Mercerie: A,B,C: 1.3m d'élastique de 3cm.

Tailles	8	10	12	14	16	18	20	22	24	26
Françaises	36	38	40	42	44	46	48	50	52	54
Européen	34	36	38	40	42	44	46	48	50	52

MESURES DU CORPS: Choisissez la taille du patron basée sur les mesures du corps

Poitrine	80	83	87	92	97	102	107	112	117	122	cm
Taille	61	64	67	71	76	81	87	94	99	104	"

Hanches (23cm au-dessous de la taille)

	85	88	92	97	102	107	112	117	122	127	cm
Dos du cou à la taille	40	40.5	41.5	42	42.5	43	44	44.5	45	46	"

Jupe A	150cm*	0.6	0.6	0.6	0.6	0.6	0.6	0.7	0.7	0.7	m
Jupe B	150cm*	1.8	1.8	1.8	1.8	1.8	1.8	1.8	1.8	1.8	m
Jupe C	150cm*	2.3	2.3	2.3	2.4	2.4	2.5	2.9	3.0	3.1	m

MESURES DES VÊTEMENTS FINI (Motif et aisance de port compris)

A,B,C Hanches 86 89 93 98 103 108 113 118 123 128 cm

Largeur à l'ourlet

Jupe A	84	86	90	95	100	105	110	116	121	126	cm
Jupe B	207	210	213	218	224	229	234	239	244	249	"

Longueur finie – dos, taille à l'ourlet

Jupe A (repose 2.5cm dessous de la taille)	38	38	38	38	38	38	38	38	38	38	cm
Jupe B (repose 2.5cm dessous de la taille)	84	84	84	84	84	84	84	84	84	84	cm

Jupe C (repose 2.5cm dessous de la taille)	107	107	107	107	107	107	107	107	107	107	cm
--	-----	-----	-----	-----	-----	-----	-----	-----	-----	-----	----



A



B



C

Use the 1 inch (2.54cm) box to ensure you are using rule at 100%

Utilisez la boîte de 2.54 cm pour vous assurer d'utiliser la règle à 100%.

Utilizar un cuadrado de 2.54 cm para asegurarse de estar usando la regla al 100%.

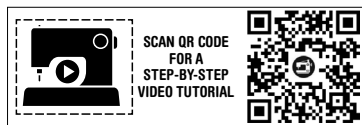
4" of crosswise folded fabric must **STRETCH** from here
10 cm de tricot plié sur le travers et sur le droit-fil doivent s'étirer de cette limite à celle là
10 cm de tejido de punto doblado (a lo largo y luego al través) deben estirarse desde acá

To Here: 35%
Jusqu'ici: 35%
hasta acá: 35%

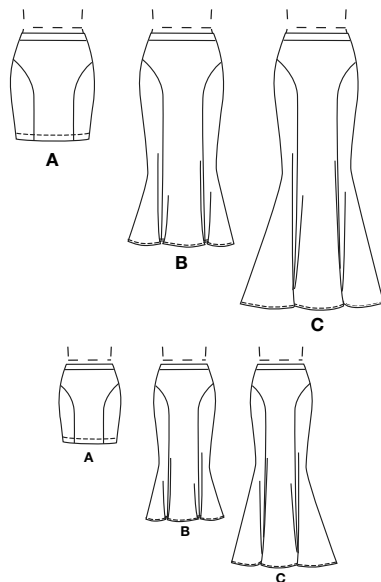
When using the Pick-A-Knit® rule to measure your fabrics stretch capacity, rule must be viewed or printed at 100%.

Quand vous utilisez le taux d'élasticité pour mesurer la capacité d'élasticité des tissus, le taux doit être visible ou imprimé à 100%.

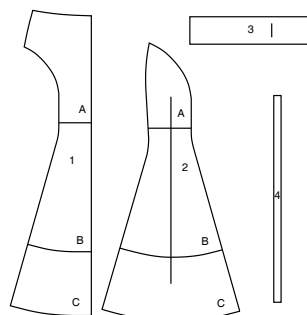
Al utilizar el calibre de elasticidad para medir la capacidad de elasticidad de las telas, el calibre debe estar visible o impreso al 100%.



SCAN QR CODE
FOR A
STEP-BY-STEP
VIDEO TUTORIAL

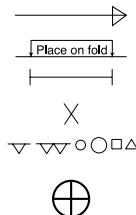


4 PATTERN PIECES



- 1 Front and Back-A,B,C
2 Side Front and Side Back-A,B,C
3 Waistband-A,B,C
4 Guide for Elastic-A,B,C

PATTERN MARKINGS



GRAINLINE: Place on straight grain of fabric, parallel to selvage or fold.

FOLDLINE: Place line on fold of fabric.

BUTTONHOLE MARKING: Indicates exact length and placement of buttonholes.

BUTTON MARKING: Indicates button placement.

NOTCHES AND SYMBOLS: For matching seams and construction details.

Indicates the Bustline, Waistline, Hip and/or Biceps. Measurements refer to circumference of Finished Garment (Body Measurement + Wearing Ease + Design Ease). Adjust pattern if necessary. The measurement excludes pleats, tucks, darts and seam allowances.

SEAM ALLOWANCE: 5/8" (1.5cm) included unless otherwise indicated, but not printed on tissue.

ADJUST IF NECESSARY

Lengthen or Shorten at adjustment lines (==) or where indicated on pattern. If substantial length is added, you may need to purchase additional fabric.

TO SHORTEN: Crease along adjustment line. Make a fold half the amount needed. Tape in place.

TO LENGTHEN: Slash between adjustment lines. Spread amount as needed, keeping edges parallel. Tape over paper.

When Alteration lines are not on tissue, lengthen or shorten at lower edge.

CUTTING AND MARKING

SHRINK FABRIC if not labeled pre-shrunk. Press.

CIRCLE LAYOUT for View, Size, Fabric Width.

Use **WITH NAP** layout for fabrics with one-way designs, nap, pile or surface shading. Because most knits have surface shading, a with nap layout is used.

For **DOUBLE THICKNESS (WITH FOLD)** - fold fabric with right sides together.

*** DOUBLE THICKNESS (WITHOUT FOLD)** - For fabrics with nap, fold fabric crosswise, right sides together. Mark as shown. Cut along crosswise fold of fabric (A). Turn upper layer 180° so arrows go in same direction and place over lower layer, right sides together (B).

For **SINGLE THICKNESS** - place fabric right side up. (For Fur Pile fabrics, place pile side down.)

★ Cut other pieces first, allowing enough fabric to cut this piece. Open fabric. For "Cut 1" pieces, cut piece once on single layer of fabric with piece face up on right side of fabric.

Pattern may have cutting lines for several sizes. Select the proper cutting line or pattern pieces for your size.

Before **CUTTING** place all pieces on fabric according to layout. Pin. (Layouts show approximate position of pattern pieces; position may vary according to your pattern size.) Cut **ACCURATELY**, cutting notches outward.

Before removing pattern, **TRANSFER MARKINGS** and lines of construction to Wrong Side of fabric, using the Pin and Chalk Pencil method or Tracing Paper and Dressmaker Wheel. Markings needed on right side of fabric should be thread traced.

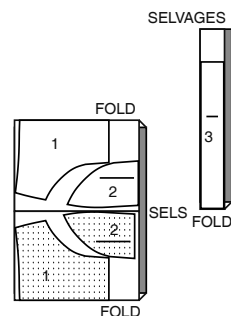
NOTE: Broken-line boxes (at bt cl) in layouts represent pieces cut by measurements provided.

CUTTING LAYOUTS

SKIRT A

USE PIECES 1 2 3

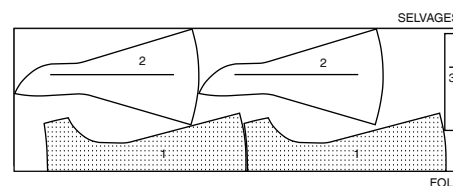
60" (150CM)
WITH NAP
ALL SIZES



SKIRT C

USE PIECES 1 2 3

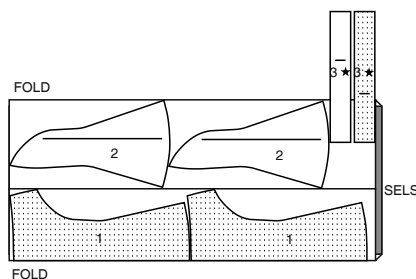
60" (150CM)
WITH NAP
SIZES 8 10 12 14 16 18



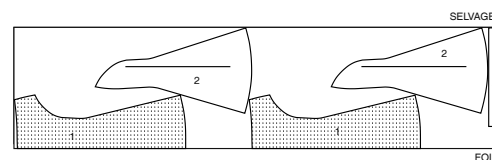
SKIRT B

USE PIECES 1 2 3

60" (150CM)
WITH NAP
ALL SIZES

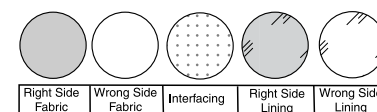


60" (150CM)
WITH NAP
SIZES 20 22 24 26



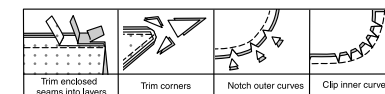
SEWING INFORMATION

FABRIC KEY



SEAM ALLOWANCES

Use 5/8" (1.5cm) seam allowances unless otherwise indicated.



PIN AND FIT

Pin or baste seams, **RIGHT SIDE TOGETHER**, matching notches. Fit garment before stitching major seams.

PRESS

Press seam allowances flat; then open unless otherwise stated. Clip where necessary so they lie flat.

GLOSSARY

Sewing terms appearing in **BOLD TYPE** in Sewing Instructions are explained below.

SLIPSTITCH - Slide needle through a folded edge, then pick up a thread of underneath fabric.



SCAN QR CODE
FOR A
STEP-BY-STEP
VIDEO TUTORIAL

PATTERN PIECES WILL BE IDENTIFIED BY NUMBERS THE FIRST TIME THEY ARE USED.

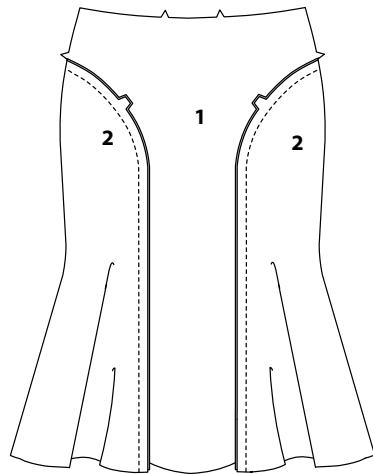
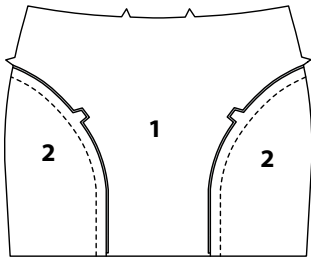
STITCH SEAMS WITH RIGHT SIDES TOGETHER UNLESS OTHERWISE STATED.

SKIRT A, B, C

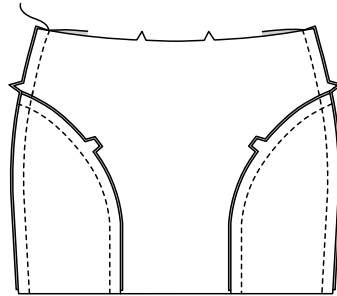
NOTE: The first view mentioned will be illustrated unless otherwise indicated.

FRONT AND BACK

1. To make skirt front, pin SIDE FRONT AND SIDE BACK (2) sections to side edges of FRONT AND BACK (1) front section; stitch. Press seam allowances toward center, clipping front if necessary.



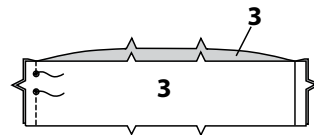
2. Make skirt back same as for skirt front. Stitch front and back together at sides.



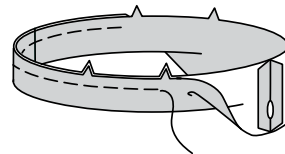
WAISTBAND

NOTE: The skirt is worn 1" (2.5cm) below waistline.

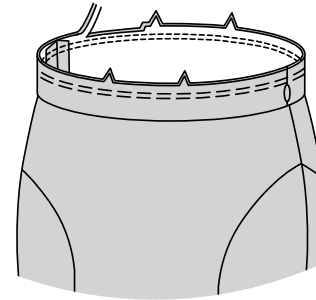
3. With RIGHT sides together, stitch side seams of WAISTBAND (3) sections, leaving an opening in LEFT side seam between small dots, as shown.



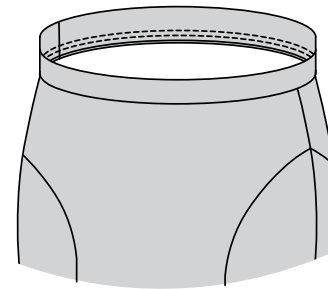
4. Fold casing in half along fold line with WRONG sides together, having raw edges even. Baste raw edges together. The side with the opening is the underside of the casing.



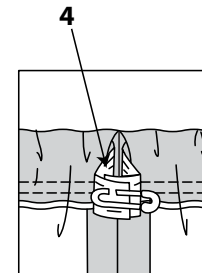
5. With the underside of casing facing you, pin casing to skirt, matching centers, and side seams. Stitch along seam line. Stitch again 1/4" (6mm) from first stitching within seam allowance. Trim close to second stitching.



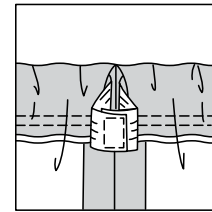
6. Press seam toward skirt, pressing casing out.



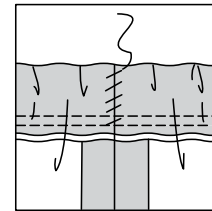
7. Cut one piece of elastic the length of GUIDE FOR ELASTIC (4). Insert elastic through opening in casing. Overlap ends and hold with a safety pin. Try on skirt and adjust to fit.



8. Stitch ends of elastic together securely.



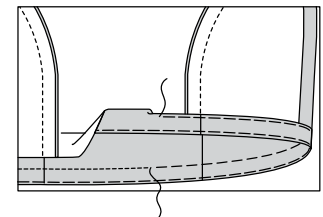
9. **SLIPSTITCH** opening edges of casing together. Distribute fullness evenly.



FINISHING

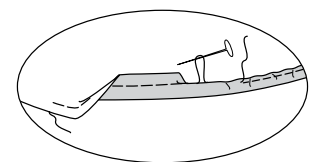
10. View A:

Turn up 1-1/4" (3.2cm) hem. Hand-baste close to fold using long running stitches. Turn in 1/4" (6mm) on raw edge and baste hem in place close to upper edge. Press. Topstitch hem along upper basting.



11. Views B, C:

Stitch 1/4" (6mm) from lower edge of dress, using long machine stitches, as shown. Turn up a 5/8" (1.5cm) hem at lower edge of skirt, turning under 1/4" (6mm) on raw edge. Pull thread to ease in fullness. Stitch.





Congrats!

You've completed your sewing adventure

SHARE YOUR LOOK



Post your pattern and tag us
[@simplicity_creative_group](#) and [#simplicitypatterns](#)
for a chance to be featured on our social media.

Look for more PDF patterns at [simplicity.com](https://www.simplicity.com)

Have a question or need help with your sewing project call us at
1-800-782-0323

McCall's
by **design**_{group}

McCall's ©2024 a division of IG Design Group Americas Inc. • Atlanta, GA 30342 USA www.thedesigngroup.com • All Rights Reserved. www.mccall.com • Made in the U.S.A. Fabriqué aux États-Unis.

To be used for individual private home use only and not for commercial or manufacturing purposes. • A usage privé seulement et non à des fins commerciales ou de production en série. • Para uso privado solamente, no se puede utilizar con propósitos de comercialización o de producción en serie.