

McCall's

M18557



Designed and printed in USA

Facile

HAUTS POUR JEUNES FEMMES ET FEMMES

Tissus Conseillés: Cotonnades, Plumetis, Toile de lin, Popeline. **Entoilage:** Thermocollant léger.

Mercerie: A: 1 paquet de ruban de biais simple de 1.3cm. B: 1.0m d'élastique de 1cm.
D: 6 boutons de 1.3cm.

Tailles	10	12	14	16	18	20W	22W	24W	26W	28W
Françaises	38	40	42	44	46	48	50	52	54	56
Européen	36	38	40	42	44	46	48	50	52	54

MESURES DU CORPS: Choisissez la taille du patron basée sur les mesures du corps

Poitrine	83	87	92	97	102	107	112	117	122	127	cm
Taille	64	67	71	76	81	89	94	99	105	112	"
Hanches (23cm au-dessous de la taille)	88	92	97	102	107	112	117	122	127	132	cm

Entoilage A,B,C

	51cm	0.8	0.8	0.8	0.8	0.8	0.8	0.9	0.9	0.9	0.9	m
Haut A	115cm*	1.5	1.5	1.5	1.5	1.6	1.9	1.9	1.9	1.9	2.1	m
	150cm*	1.1	1.1	1.3	1.3	1.3	1.5	1.5	1.5	1.6	1.6	"
Haut B	115cm*	1.9	1.9	1.9	2.1	2.1	2.6	2.6	2.7	2.7	2.7	m
	150cm*	1.5	1.5	1.5	1.6	1.6	2.1	2.1	2.1	2.1	2.2	"
Haut C	115cm*	1.6	1.6	1.6	1.7	1.7	1.9	1.9	2.2	2.2	2.2	m
	150cm*	1.4	1.4	1.4	1.4	1.4	1.6	1.6	1.6	1.6	1.7	"
Haut D	115cm*	2.1	2.1	2.1	2.1	2.2	2.5	2.5	2.6	2.6	2.7	m
	150cm*	1.6	1.6	1.6	1.7	1.7	1.8	1.9	1.9	1.9	1.9	"
Entoilage	51cm	0.9	0.9	0.9	0.9	0.9	1.1	1.1	1.3	1.3	1.3	

MESURES DES VÊTEMENTS FINI (Motif et aisance de port compris)

A,B,C,D Poitrine	97	100	105	110	116	117	122	127	132	137	cm
Largueur à fourlet											
Haut C,D	108	112	117	122	127	131	136	141	146	151	cm
Longueur finie – dos, votre nuque à fourlet											
Haut A,B	56	57	57	58	58	63	64	64	65	65	cm
Haut C,D	53	54	55	55	56	60	61	62	62	63	"

⁸⁶avec sens ⁸⁷sans sens



A



1



C



1

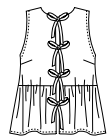
M8557

Page 1 of 4

McCall's®

English

1-800-782-0323



A



B



C



D



A



B

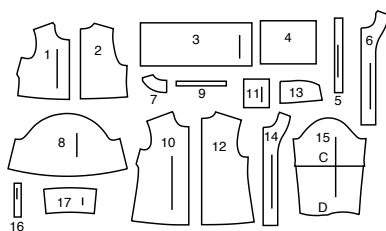


C



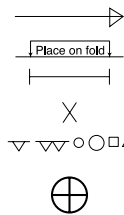
D

17 PATTERN PIECES



- 1 Front-A,B
- 2 Back-A,B
- 3 Ruffle-A,B (Front and Side Back)
- 4 Ruffle-A,B (Back)
- 5 Tie End-A,B,C,D
- 6 Front Facing-A,B
- 7 Back Facing-A,B
- 8 Sleeve-B
- 9 Guide for Elastic-B
- 10 Front-C,D
- 11 Pocket-C,D
- 12 Back-C,D
- 13 Collar-C,D
- 14 Front Facing-C,D
- 15 Sleeve-C,D
- 16 Continuous Lap-D
- 17 Cuff-D

PATTERN MARKINGS



GRAINLINE: Place on straight grain of fabric, parallel to selvage or fold.

FOLDLINE: Place line on fold of fabric.

BUTTONHOLE MARKING: Indicates exact length and placement of buttonholes.

BUTTON MARKING: Indicates button placement.

NOTCHES AND SYMBOLS: For matching seams and construction details.

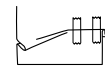
Indicates the Bustline, Waistline, Hip and/or Biceps. Measurements refer to circumference of Finished Garment (Body Measurement + Wearing Ease + Design Ease). Adjust pattern if necessary. The measurement excludes pleats, tucks, darts and seam allowances.

SEAM ALLOWANCE: 5/8" (1.5cm) included unless otherwise indicated, but not printed on tissue.

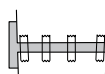
ADJUST IF NECESSARY

Lengthen or Shorten at adjustment lines (==) or where indicated on pattern. If substantial length is added, you may need to purchase additional fabric.

TO SHORTEN: Crease along adjustment line. Make a fold half the amount needed. Tape in place.



TO LENGTHEN: Slash between adjustment lines. Spread amount as needed, keeping edges parallel. Tape over paper.



When Alteration lines are not on tissue, lengthen or shorten at lower edge.

CUTTING AND MARKING

SHRINK FABRIC if not labeled pre-shrunk. Press.

CIRCLE LAYOUT for View, Size, Fabric Width.

Use **WITH NAP** layout for fabrics with one-way designs, nap, pile or surface shading. Because most knits have surface shading, a with nap layout is used.

For **DOUBLE THICKNESS (WITH FOLD)** - fold fabric with right sides together.

*** DOUBLE THICKNESS (WITHOUT FOLD)** - For fabrics with nap, fold fabric crosswise, right sides together. Mark as shown. Cut along crosswise fold of fabric (A). Turn upper layer 180° so arrows go in same direction and place over lower layer, right sides together (B).

For **SINGLE THICKNESS** - place fabric right side up. (For Fur Pile fabrics, place pile side down.)

★ Cut other pieces first, allowing enough fabric to cut this piece. Open fabric. For "Cut 1" pieces, cut piece once on single layer of fabric with piece face up on right side of fabric.

Pattern may have cutting lines for several sizes. Select the proper cutting line or pattern pieces for your size.

Before **CUTTING** place all pieces on fabric according to layout. Pin. (**Layouts show approximate position of pattern pieces; position may vary according to your pattern size.**) Cut **ACCURATELY**, cutting notches outward.

Before removing pattern, **TRANSFER MARKINGS** and lines of construction to Wrong Side of fabric, using the Pin and Chalk Pencil method or Tracing Paper and Dressmaker Wheel. Markings needed on right side of fabric should be thread traced.

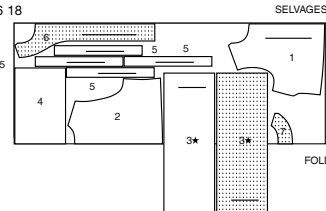
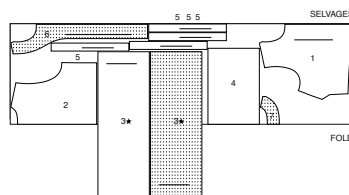
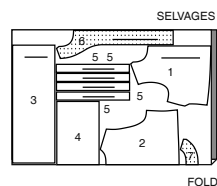
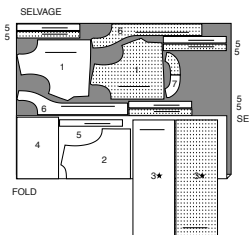
NOTE: Broken-line boxes (a! b! c!) in layouts represent pieces cut by measurements provided.

CUTTING LAYOUTS

RIGHT SIDE OF PATTERN	WRONG SIDE OF PATTERN	RIGHT SIDE OF FABRIC	WRONG SIDE OF FABRIC
-----------------------	-----------------------	----------------------	----------------------

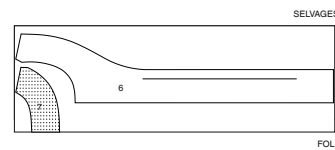
TOP A

USE PIECES: 1 2 3 4 5 6 7

45" (115 CM) WITH NAP
SIZES 10 12 14 16 1845" (115 CM)
WITH NAP
SIZES 20W 22W 24W 26W 28W60" (150 CM)
WITH NAP
SIZES 10 12 14 16 1860" (150 CM)
WITH NAP
SIZES 20W 22W 24W 26W 28W

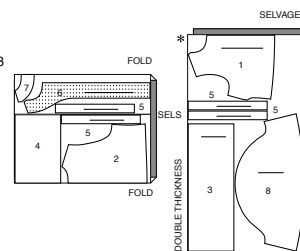
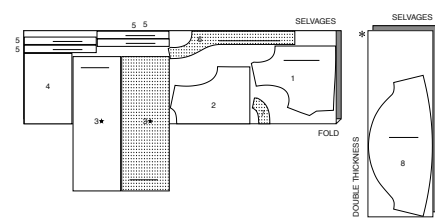
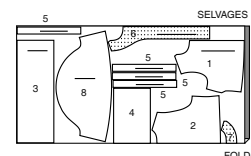
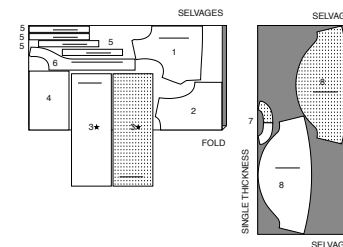
INTERFACING A,B

USE PIECES: 6 7

20" (51 CM)
ALL SIZES

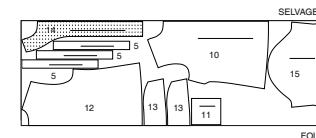
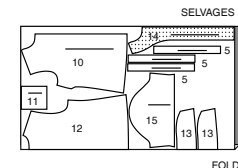
TOP B

USE PIECES: 1 2 3 4 5 6 7 8

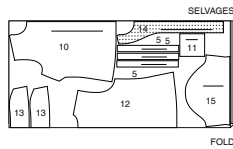
45" (115 CM)
WITH NAP
SIZES 10 12 14 16 1845" (115 CM)
WITH NAP
SIZES 20W 22W 24W 26W 28W60" (150 CM)
WITH NAP
SIZES 10 12 14 16 1860" (150 CM)
WITH NAP
SIZES 20W 22W 24W 26W 28W

TOP C

USE PIECES: 5 10 11 12 13 14 15

45" (115 CM)
WITH NAP
SIZES 10 12 14
16 1845" (115 CM)
WITH NAP
SIZES 20W 22W 24W 26W 28W60" (150 CM)
WITH NAP
SIZES 10 12 14 16 18

60" (150 CM)
WITH NAP
SIZES 20W 22W 24W
26W 28W

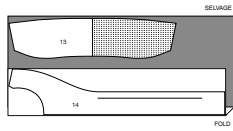


FOLD

INTERFACING C

USE PIECES: 13 14

20" (51 CM)
ALL SIZES

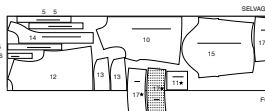


FOLD

TOP D

USE PIECES: 5 10 11 12 13 14 15 16 17

45" (115 CM)
WITH NAP
SIZES 10 12 14 16 18



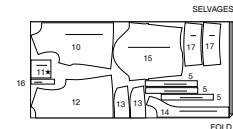
FOLD

45" (115 CM)
WITH NAP
SIZES 20W 22W 24W 26W 28W



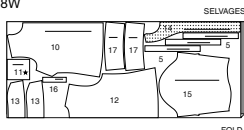
FOLD

60" (150 CM)
WITH NAP
SIZES 10 12 14 16 18



FOLD

60" (150 CM)
WITH NAP
SIZES 20W 22W 24W 26W 28W

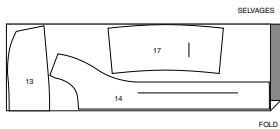


FOLD

INTERFACING D

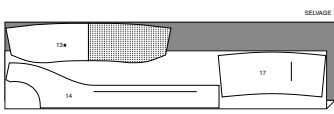
USE PIECES: 13 14 17

20" (51 CM)
SIZES 10 12 14 16 18



FOLD

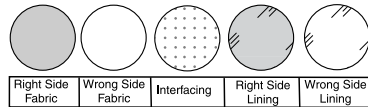
20" (51 CM)
SIZES 20W 22W 24W 26W 28W



FOLD

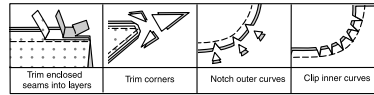
SEWING INFORMATION

FABRIC KEY



SEAM ALLOWANCES

Use 5/8" (1.3cm) seam allowances unless otherwise indicated.



PIN AND FIT

Pin or baste seams, **RIGHT SIDE TOGETHER**, matching notches. Fit garment before stitching major seams.

PRESS

Press seam allowances flat; then open unless otherwise stated. Clip where necessary so they lie flat.

GLOSSARY

Sewing methods in **BOLD TYPE** have Sewing Tutorial Video available. Scan **QR CODE** to watch videos:

SLEEVE - See **Armholes/Sleeves: "sewing a set in sleeve"** video

DART - See **Darts: "sewing flat dart"** video.

EASE/GATHER - See **Gathering: "sewing two row gathers"** video.

CATCHSTITCH - See **Hand Stitching: "how to catchstitch"** video.

EDGE STITCH - See **Machine Stitches: "how to edgestitch"** video.

REINFORCE - See **Machine Stitches: "how to reinforce"** video.

STAYSTITCH - See **Machine Stitches: "how to do stay-stitching"** video.

TOPSTITCH - See **Machine Stitches: "how to topstitch"** video.

UNDERSTITCH - See **Machine Stitches: "how to understitch"** video.

FINISH - See **Seams: "how to finish seam allowances"** video.

SLIPSTITCH - Slide needle through a folded edge, then pick up a thread of underneath fabric.

SEWING TUTORIALS



Build your skills viewing short, easy-to-follow videos at simplicity.com/sewingtutorials

PATTERN PIECES WILL BE IDENTIFIED BY NUMBERS THE FIRST TIME THEY ARE USED.

STITCH SEAMS WITH RIGHT SIDES TOGETHER UNLESS OTHERWISE STATED.

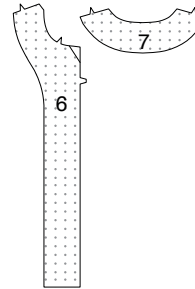
SEWING DIRECTIONS

NOTE: Under each sub-heading, the first view will be illustrated, unless otherwise indicated.

TOP A, B

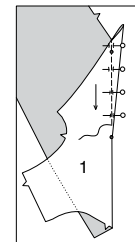
INTERFACING

1. Trim corners of **INTERFACING**, as shown. Fuse interfacing to wrong side of each matching **FABRIC** section, following manufacturer's instructions.

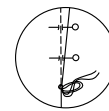


FRONT AND BACK

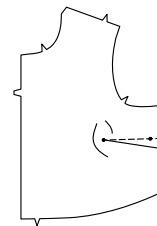
2. To make **DART** in **FRONT** (1), with **RIGHT** sides together, fold the fabric through the center of the dart, bringing broken lines and small dots together. On **INSIDE**, place pins at **RIGHT** angles to the broken lines. Stitch the dart from wide end to point.



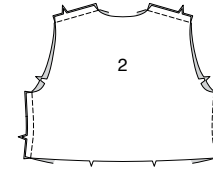
3. TIP: To prevent a "bubble" at the point, make the last few stitches right on the fold and leave the thread ends long enough to tie a knot. **DO NOT** back-stitch at the point.



4. Press the dart flat along the stitching to "blend" the stitches, then press dart toward lower edge.



5. Stitch **BACK** (2) to front at shoulders and sides.

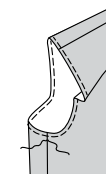


ARMHOLE FINISH A

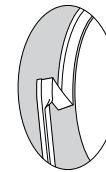
6. Baste armhole 3/4" (2cm) from raw edge. Trim away armhole raw edge 1/2" (1.3cm) from basting.



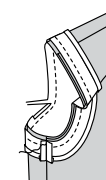
7. To prevent armhole edge from stretching, stitch 1/4" (6mm) from raw edge.



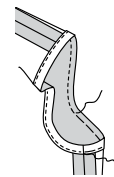
8. Open out one folded edge of bias tape. Press out crease and preshape tape to match curve of armhole edge by pressing lightly.



9. Pin bias tape to armhole edge, having raw edges even, turning under ends to meet at underarm seam. Stitch in a 3/8" (1cm) seam. Trim seam to a scant 1/4" (6mm).



10. Turn bias tape to inside along seam; press. Baste in place, stretching tape to fit. On outside, stitch close to basted edge.

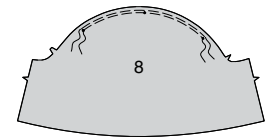


11. SLIPSTITCH ends of bias tape together.

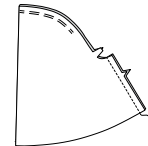


SLEEVE B

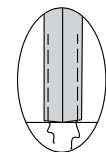
12. GATHER cap of **SLEEVE** (8) between outer dots.



13. Stitch sleeve seam.



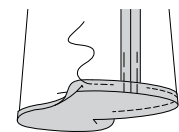
14. To keep elastic from getting stuck in the seam allowances as it's inserted, use fusible web or machine-basting to anchor them to sleeve within the casing area. Be sure to remove basting after casing is finished.



15. Press 3/4" (2cm) on lower edge of sleeve to **INSIDE**, forming casing.

Press under 1/4" (6mm) on raw edge.

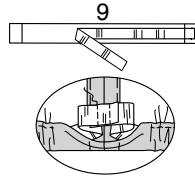
Stitch close to upper edge of casing, leaving an opening to insert elastic.



16. Cut two pieces of elastic, each using GUIDE FOR ELASTIC (9) pattern piece.

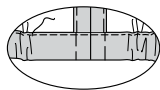
Insert elastic through casing. Overlap ends and hold with a safety pin. Try on and adjust to fit if necessary.

Stitch ends of elastic together securely.

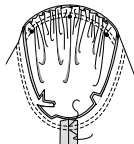


17. Stitch opening closed, stretching elastic while stitching. Distribute fullness evenly. Remove basting.

TIP - To secure elastic so it won't twist in wearing, stitch through all thicknesses of casing in the groove of the seam.



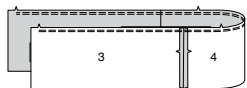
18. With RIGHT sides together, pin sleeve into armhole with center small dot at shoulder seam, matching underarm seams, notches and remaining small dots. Adjust gathers; baste; stitch. Stitch again 1/4" (6mm) away in seam allowance. Trim close to second stitching. Turn seams toward sleeve.



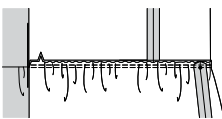
RUFFLE

19. With RIGHT sides together, pin each RUFFLE (3) (front and side back) to side edges of RUFFLE (4) (back). Stitch.

GATHER upper edge of ruffle between front notches.

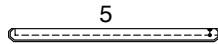


20. With RIGHT sides together, pin ruffle to lower edge of top, matching centers and side back seams to small dots on top back. Adjust gathers; baste; stitch. Stitch again 1/4" (6mm) away in seam allowance. Trim close to second stitching. Turn seams toward top.



TIE ENDS

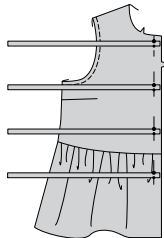
21. With RIGHT sides together, fold each TIE END (5) section in half lengthwise. Stitch in a 3/8" (1cm) seam, leaving end with dots open. Trim seams; trim corners.



22. Turn RIGHT side out; press. Baste raw edges.



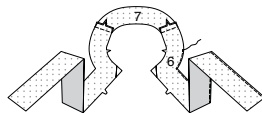
23. On outside, pin four tie ends to each front edge, matching small and large dots, having raw edges even; baste.



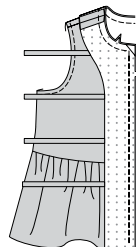
FACING

24. Stitch BACK FACING (7) to each FRONT FACING (6) at shoulders.

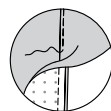
FINISH long unnotched edge of facing.



25. Pin facing to front and neck edges, matching center backs and seams. Stitch; trim seams.

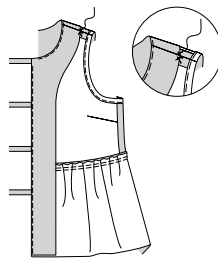


26. UNDERSTITCH facing as far as possible.



27. Turn facing to inside; press.

CATCHSTITCH facing to shoulder seams.



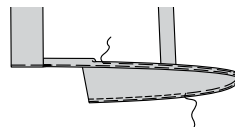
HEM

28. Turn lower edge of facings to outside along seam. Stitch across facing 5/8" (1.5cm) above raw edge. Trim as shown.



29. Turn facings to inside again, continuing to turn under 5/8" (1.5cm) on remainder of lower edge. Baste close to fold. Turn under 1/4" (6mm) on raw edge. Baste hem in place close to upper edge; press.

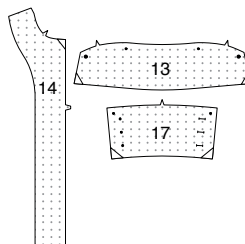
TOPSTITCH hem along upper basting, continuing to front edges.



TOP C, D

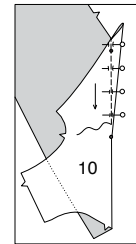
INTERFACING

1. Trim corners of INTERFACING, as shown. Fuse interfacing to wrong side of each matching FABRIC section, following manufacturer's instructions.

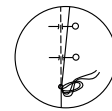


FRONT AND BACK

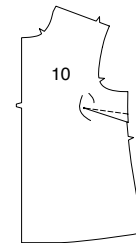
2. To make dart in FRONT (10), with RIGHT sides together, fold the fabric through the center of the dart, bringing broken lines and small dots together. On INSIDE, place pins at RIGHT angles to the broken lines. Stitch the dart from wide end to point.



3. TIP - To prevent a "bubble" at the point, make the last few stitches right on the fold and leave the thread ends long enough to tie a knot. DO NOT back-stitch at the point.

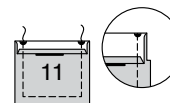


4. Press the dart flat along the stitching to "blend" the stitches, then press dart toward lower edge.



5. Press under 1/4" (6mm) on upper edge of POCKET (11). Turn upper edge to OUTSIDE along foldline, forming facing.

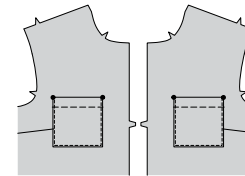
Stitch along seam line on raw edges. Trim seam allowance in the facing area to 1/4" (6mm).



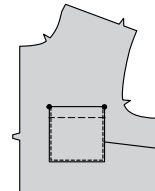
6. Turn corners RIGHT side out, turning facing to the WRONG side; press, pressing under raw edges along stitching. Stitch facing close to inner edge.



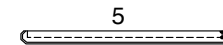
7. For View C: On OUTSIDE, pin one pocket to each front, matching large dots. Stitch close to sides and lower edge.



8. For View D: On OUTSIDE, pin pocket to left front, matching large dots. Stitch close to sides and lower edge.



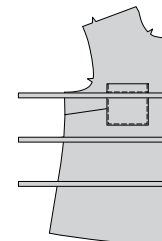
9. With RIGHT sides together, fold each TIE END (5) section in half lengthwise. Stitch in a 3/8" (1cm) seam, leaving end with dots open. Trim seams; trim corners.



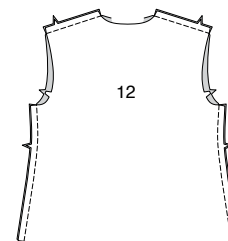
10. Turn RIGHT side out; press. Baste raw edges.



11. On outside, pin three tie ends to each front edge, matching small and large dots, having raw edges even; baste.

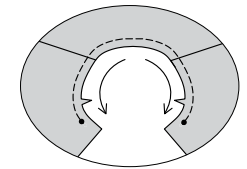


12. Stitch BACK (12) to front at shoulders and sides.

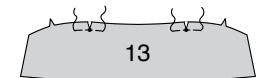


COLLAR

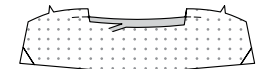
13. STAYSTITCH neck edge between large dots.



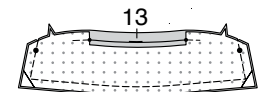
14. REINFORCE neck edge of interfaced COLLAR (13) section through small dots, as shown. Clip to small dots. (Uninterfaced collar section will be used as facing.)



15. Press under 5/8" (1.5cm) between clips. Trim pressed edge to 3/8" (1cm).



16. Pin collar FACING (13) to collar, RIGHT sides together. Stitch, leaving notched edge open. Trim seams.



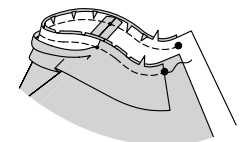
17. UNDERSTITCH long edge of collar facing as far as possible.



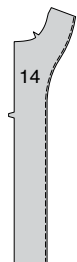
18. Turn collar RIGHT side out; press. Baste raw edges together.



19. Pin collar to neck edge, matching center backs and large dots, clipping top neck edge where necessary. Baste, keeping pressed edge free.

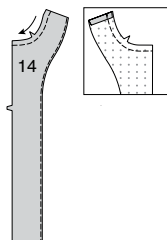


20. FINISH long unnotched edge of FRONT FACING (14).



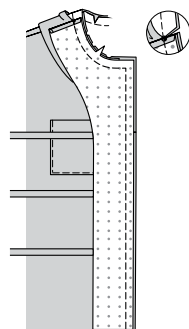
21. STAYSTITCH facing along neck edge.

Turn in seam allowance on shoulder edge; press.

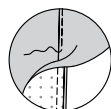


22. Pin front facing to front opening and neck edges, clipping neck edge where necessary. Stitch, keeping pressed edge of collar free.

Clip collar seam allowance at ends of facings, as shown; trim seam.



23. UNDERSTITCH front edge of front facing as far as possible.

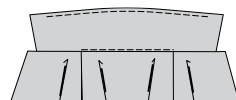


24. Turn facings to inside, turning collar out. Press seam toward collar between clips.

SLIPSTITCH pressed edge of collar and facings over seams.



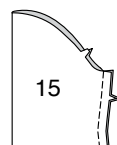
25. On outside, **EDGESTITCH** neck edge of collar between shoulder seams.



SLEEVE

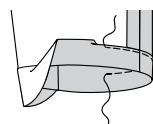
VIEW C

26. Stitch seam of SLEEVE (15).



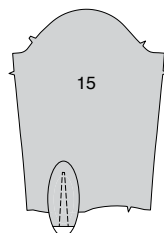
27. Turn up a 1-1/4" (3.2cm) hem on lower edge of sleeve. Press under 1/4" (6mm) on raw edge.

Stitch close to inner pressed edge.



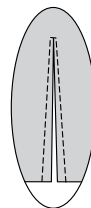
VIEW D

28. To make slash opening at lower edge of SLEEVE (15), stitch along stitching lines. Pivot and take one small stitch across the point.

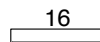


29. Slash between stitching, being careful not to slash through the stitch at the point.

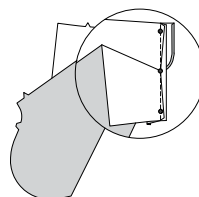
TIP - To prevent fabric from fraying, treat the point with a liquid seam sealant, such as Fray Check™. **TEST** on a scrap of fabric first.



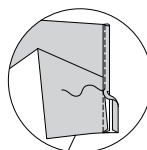
30. Press under 3/8" (1cm) on unmarked edge of CONTINUOUS LAP (16).



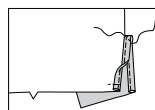
31. Spread slashed edges of sleeve apart so that they form a straight line. Pin RIGHT side of continuous lap to WRONG side of slashed edges, matching stitching lines and small dots. Sleeve seam allowance will be 3/8" (1cm) at the ends, but taper close to nothing at the center dot. Stitch along stitching line, being careful not to pucker sleeve at center dot. Press seam toward lap.



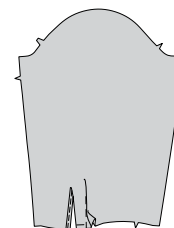
32. Pin pressed edge of lap to OUTSIDE slightly over stitching. Stitch close to pressed edge.



33. Turn front edge of lap to INSIDE; baste in place across lower edge. To keep lap in place, stitch diagonally across upper edge of lap as shown.



34. To make pleat, on OUTSIDE, fold along solid line. Bring fold to broken line in direction of arrow; pin. Baste across raw edge.



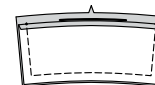
35. Stitch underarm seam.



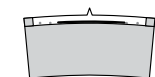
36. Press under 5/8" (1.5cm) on notched edge of two uninterfaced CUFF (17) sections. Trim pressed edge to 3/8" (1cm).



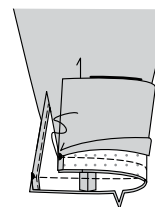
37. For each cuff, stitch uninterfaced cuff section to interfaced cuff section, leaving notched edge open. Trim seams.



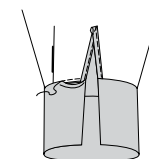
38. Turn cuff RIGHT side out; press.



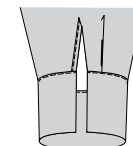
39. With RIGHT sides together, pin cuff to sleeve, matching notches and small dots to opening edges. Stitch, keeping pressed edge free. Trim seam; press toward cuff.



40. SLIPSTITCH pressed edge over seam.

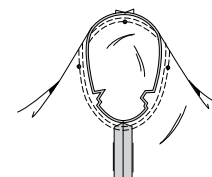


41. On outside, **EDGESTITCH** upper edge of cuff.



VIEWS C, D

42. With RIGHT sides together, pin SLEEVE into armhole with center small dot at shoulder seam, matching underarm seams, notches and remaining small dots; baste; stitch. Stitch again 1/4" (6mm) away in seam allowance. Trim close to second stitching. Turn seams toward sleeve.



FINISHING

HEM

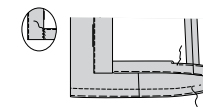
43. Turn lower edge of facings to outside along seam. Stitch across facing 1-1/4" (3.2cm) above raw edge. Trim as shown.



44. Turn facings to inside again, continuing to turn under 1-1/4" (3.2cm) on remainder of lower edge. Baste close to fold. Turn under 1/4" (6mm) on raw edge. Baste hem in place close to upper edge; press.

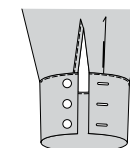
TOPSTITCH hem along upper basting, continuing to front edges.

Catchstitch facings to hem.



BUTTONHOLES AND BUTTONS - VIEW D

45. Make buttonholes in cuffs at markings. Sew buttons to cuffs at markings.





Congrats!

You've completed your sewing adventure

SHARE YOUR LOOK



Post your pattern and tag us
[@simplicity_creative_group](#) and [#simplicitypatterns](#)
for a chance to be featured on our social media.

Look for more PDF patterns at [simplicity.com](https://www.simplicity.com)

Have a question or need help with your sewing project call us at
1-800-782-0323

McCall's
by **design**_{group}

McCall's ©2024 a division of IG Design Group Americas Inc. • Atlanta, GA 30342 USA www.thedesigngroup.com • All Rights Reserved. www.mccall.com • Made in the U.S.A. Fabriqué aux États-Unis.

To be used for individual private home use only and not for commercial or manufacturing purposes. • A usage privé seulement et non à des fins commerciales ou de production en série. • Para uso privado solamente, no se puede utilizar con propósitos de comercialización o de producción en serie.