

McCall's

M8556



Designed and printed in USA

Average

MISSES' SHIRTDRESS IN THREE LENGTHS

Suggested Fabrics: Cotton Shirting, Crepe, Linen Blends, Taffeta, Twill. **Lining:** Lining Fabric.

Interfacing: Lightweight Fusible.

Notions: A,B,C: ¾" (2cm) buttons: Eleven for A (including two internal), Twelve for B,C (including two internal).

Sizes	8	10	12	14	16	18	20	22	24	26
European	34	36	38	40	42	44	46	48	50	52

BODY MEASUREMENTS: Select pattern size based on body measurements

Bust	31½	32½	34	36	38	40	42	44	46	48	Ins.
Waist	24	25	26½	28	30	32	34	37	39	41	"
Hip-9" below waist	33½	34½	36	38	40	42	44	46	48	50	"
Back-neck to waist	15¾	16	16¼	16½	16¾	17	17¼	17½	17¾	18	"

Lining A,B,C 45*** - ½ yd.

Dress A	60**	3¾	3¾	3¾	3½	3½	3½	3½	3¾	3¾	3¾	Yds.
Interfacing	20"	1¾	1¾	2	2	2	2½	2½	2½	2¼	2¼	"
Dress B	60**	4	4	4	4	4½	4½	4¾	4¾	4¾	4¾	Yds.
Interfacing	20"	2	2	2	2	2	2½	2½	2½	2¼	"	
Dress C	60**	5¾	5¾	5¾	5¾	5¾	5¾	5¾	5¾	6	Yds.	
Interfacing	20"	2¾	2¾	2¾	2¾	2¾	2¾	2¾	2¾	2¾	"	

FINISHED GARMENT MEASUREMENTS (Includes Design and Wearing Ease)

A,B,C Waist	26	27	28½	30½	32½	34½	36½	38½	40½	42½	Ins.
Finished back length from base of neck											
Dress A	35¾	36	36¼	36½	36¾	37	37¼	37½	37¾	38	Ins.
Dress B	45¾	46	46¼	46½	46¾	47	47¼	47½	47¾	48	"
Dress C	57¾	58	58¼	58½	58¾	59	59¼	59½	59¾	60	"

*with nap **without nap

Moins Facile

ROBE CHEMISIER EN TROIS LONGUEURS POUR JEUNES FEMMES

Tissus Conseillés: Shirting de coton, Crêpe, Lin mélangés, Taffetas, Twill. **Doubleure:** Tissu à doubleure. **Entoilage:** Thermocollant léger.

Mercurie: A,B,C: Boutons de 2cm: 11 pour A (y compris deux pour l'intérieur), 12 pour B,C (y compris deux pour l'intérieur).

Tailles	8	10	12	14	16	18	20	22	24	26
Françaises	36	38	40	42	44	46	48	50	52	54
Européen	34	36	38	40	42	44	46	48	50	52

MESURES DU CORPS: Choisissez la taille du patron basée sur les mesures du corps

Poitrine	80	83	87	92	97	102	107	112	117	122	cm
Taille	61	64	67	71	76	81	87	94	99	104	"
Hanches (23cm au-dessous de la taille)											
	85	88	92	97	102	107	112	117	122	127	cm
Dos du cou à la taille	40	40.5	41.5	42	42.5	43	44	44.5	45	46	"

Doubleure A,B,C 115cm** - 0.5m

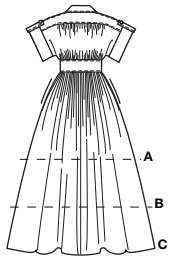
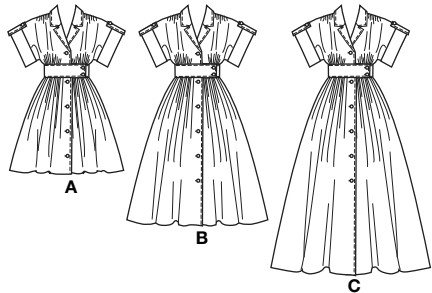
Robe A	150cm*	3.1	3.1	3.1	3.1	3.2	3.2	3.2	3.3	3.3	3.3	m
Entoilage	51cm	1.7	1.7	1.8	1.8	1.8	1.9	1.9	1.9	2.1	2.1	"
Robe B	150cm*	3.7	3.7	3.7	3.7	3.8	3.9	4.0	4.1	4.2	4.3	m
Entoilage	51cm	1.8	1.8	1.8	1.8	1.8	1.9	1.9	1.9	1.9	1.9	"
Robe C	150cm*	5.3	5.3	5.3	5.3	5.3	5.4	5.4	5.4	5.5	5.5	m
Entoilage	51cm	1.9	1.9	2.1	2.1	2.1	2.1	2.1	2.2	2.2	2.2	"

MESURES DES VÊTEMENTS FINI (Motif et aisance de port compris)

A,B,C Taille	66	69	72	77	83	88	93	98	103	108	cm
Longueur finie – dos, votre nuque à l'ourlet											
Robe A	91	91	92	93	93	94	95	95	96	97	cm
Robe B	116	117	117	118	119	119	120	121	121	122	"
Robe C	147	147	148	149	149	150	150	151	152	152	"

*avec sens **sans sens





PATTERN MARKINGS

GRAINLINE: Place on straight grain of fabric, parallel to selvage or fold.

FOLDLINE: Place line on fold of fabric.

BUTTONHOLE MARKING: Indicates exact length and placement of buttonholes.

BUTTON MARKING: Indicates button placement.

NOTCHES AND SYMBOLS: For matching seams and construction details.

Indicates the Bustline, Waistline, Hip and/or Biceps. Measurements refer to circumference of Finished Garment (Body Measurement + Wearing Ease + Design Ease). Adjust pattern if necessary. The measurement excludes pleats, tucks, darts and seam allowances.

SEAM ALLOWANCE: 5/8" (1.5cm) included unless otherwise indicated, but not printed on tissue.

ADJUST IF NECESSARY

Lengthen or Shorten at adjustment lines (==) or where indicated on pattern. If substantial length is added, you may need to purchase additional fabric.

TO SHORTEN: Crease along adjustment line. Make a fold half the amount needed. Tape in place.

TO LENGTHEN: Slash between adjustment lines. Spread amount as needed, keeping edges parallel. Tape over paper.

When Alteration lines are not on tissue, lengthen or shorten at lower edge.

CUTTING AND MARKING

SHRINK FABRIC if not labeled pre-shrunk. Press.

CIRCLE LAYOUT for View, Size, Fabric Width.

Use **WITH NAP** layout for fabrics with one-way designs, nap, pile or surface shading. Because most knits have surface shading, a with nap layout is used.

For **DOUBLE THICKNESS (WITH FOLD)** - fold fabric with right sides together.

*** DOUBLE THICKNESS (WITHOUT FOLD)** - For fabrics with nap, fold fabric crosswise, right sides together. Mark as shown. Cut along crosswise fold of fabric (A). Turn upper layer 180° so arrows go in same direction and place over lower layer, right sides together (B).

For **SINGLE THICKNESS** - place fabric right side up. (For Fur Pile fabrics, place pile side down.)

★ Cut other pieces first, allowing enough fabric to cut this piece. Open fabric. For "Cut 1" pieces, cut piece once on single layer of fabric with piece face up on right side of fabric.

Pattern may have cutting lines for several sizes. Before **CUTTING** place all pieces on fabric according to layout. Pin. (**Layouts show approximate position of pattern pieces; position may vary according to your pattern size.**) Cut **ACCURATELY**, cutting notches outward.

Before removing pattern, **TRANSFER MARKINGS** and lines of construction to Wrong Side of fabric, using the Pin and Chalk Pencil method or Tracing Paper and Dressmaker Wheel. Markings needed on right side of fabric should be thread traced.

NOTE: Broken-line boxes (a| b| c|) in layouts represent pieces cut by measurements provided.

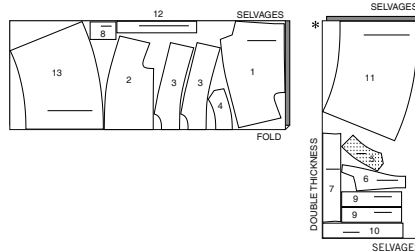
CUTTING LAYOUTS

RIGHT SIDE OF PATTERN	WRONG SIDE OF PATTERN	RIGHT SIDE OF FABRIC	WRONG SIDE OF FABRIC
-----------------------	-----------------------	----------------------	----------------------

DRESS A

USE PIECES: 1 2 3 4 5 6 7 8 9 10 11 12 13

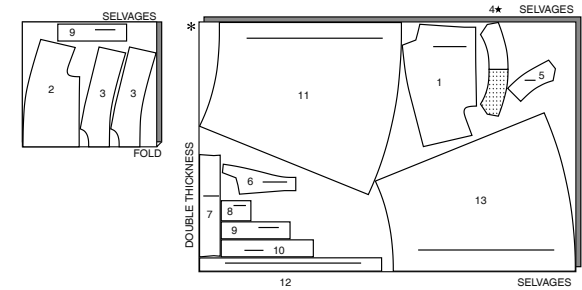
60" (150 CM)
WITH NAP
ALL SIZES



DRESS C

USE PIECES: 1 2 3 4 5 6 7 8 9 10 11 12 13

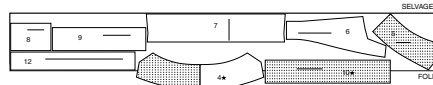
60" (150 CM)
WITH NAP
ALL SIZES



INTERFACING A

USE PIECES: 4 5 6 7 8 9 10 12

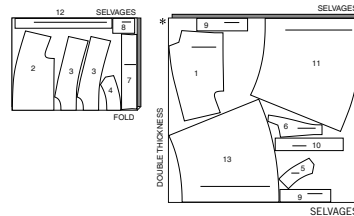
20" (51 CM)
WITHOUT NAP
ALL SIZES



DRESS B

USE PIECES: 1 2 3 4 5 6 7 8 9 10 11 12 13

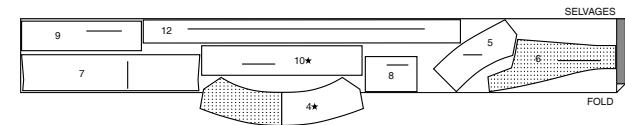
60" (150 CM)
WITH NAP
ALL SIZES



INTERFACING C

USE PIECES: 4 5 6 7 8 9 10 12

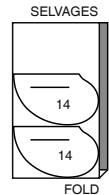
20" (51 CM)
WITHOUT NAP
ALL SIZES



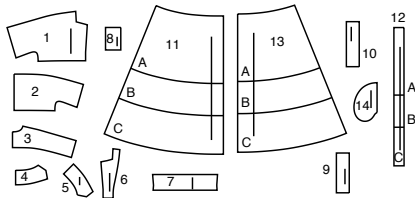
LINING A,B,C

USE PIECE: 14

45" (115 CM)
WITH NAP
ALL SIZES



14 PATTERN PIECES

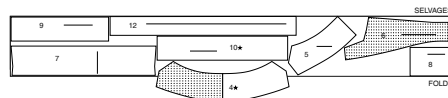


- 1 Bodice Front-A,B,C
- 2 Bodice Back-A,B,C
- 3 Yoke Back-A,B,C
- 4 Upper Collar-A,B,C
- 5 Undercollar-A,B,C
- 6 Bodice Front Facing-A,B,C
- 7 Sleeve Facing-A,B,C
- 8 Sleeve Tab-A,B,C
- 9 Midriff Front-A,B,C
- 10 Midriff Back-A,B,C
- 11 Skirt Front-A,B,C
- 12 Skirt Front Facing-A,B,C
- 13 Skirt Back-A,B,C
- 14 Pocket-A,B,C

INTERFACING B

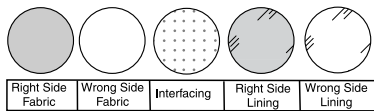
USE PIECES: 4 5 6 7 8 9 10 12

20" (51 CM)
WITHOUT NAP
ALL SIZES



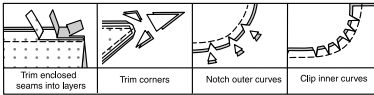
SEWING INFORMATION

FABRIC KEY



SEAM ALLOWANCES

Use 5/8" (1.5cm) seam allowances unless otherwise indicated.



PIN AND FIT

Pin or baste seams, **RIGHT SIDE TOGETHER**, matching notches. Fit garment before stitching major seams.

PRESS

Press seam allowances flat; then open unless otherwise stated. Clip where necessary so they lie flat.

GLOSSARY

Sewing methods in **BOLD TYPE** have Sewing Tutorial Video available. Scan **QR CODE** to watch videos:

DESIGNER HEM – See Hems: “sewing a baby hem” video.

EASE/GATHER – See Gathering: “sewing two row gathers” video.

SLIPSTITCH – See Hand Stitching: “how to slip stitch” video.

STAYSTITCH – See Machine Stitches: “how to do stay stitching” video.

STITCH IN THE DITCH – See Machine Stitches: “how to stitch in the ditch” video.

TOPSTITCH – See Machine Stitches: “how to topstitch” video.

TRIM SEAM – See Seams: “how to trim, clip and layer seams” video.

UNDERSTITCH – See Machine Stitches: “how to understitch” video.

SEWING TUTORIALS



Build your skills viewing short, easy-to-follow videos at simplicity.com/sewingtutorials

PATTERN PIECES WILL BE IDENTIFIED BY NUMBERS THE FIRST TIME THEY ARE USED.

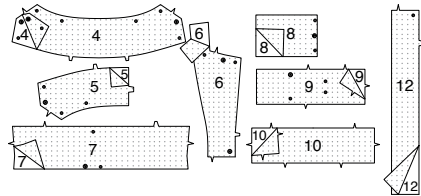
STITCH SEAMS WITH RIGHT SIDES TOGETHER UNLESS OTHERWISE STATED.

DRESS A, B, C

INTERFACING

1. Pin interfacing to **WRONG** side of **UPPER COLLAR (4)**, **UNDERCOLLAR (5)**, **BODICE FRONT FACING (6)**, **SLEEVE FACING (7)**, **SLEEVE TAB (8)**, **MIDRIFF FRONT (9)**, **MIDRIFF BACK (10)**, and **SKIRT FRONT FACING (12)**.

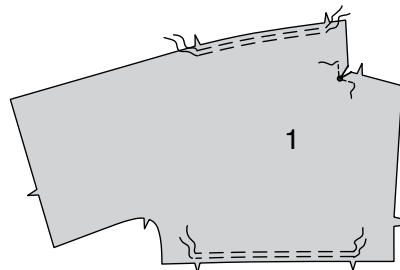
Fuse in place following manufacturer's directions.



BODICE

2. To reinforce inner corner of **BODICE FRONT (1)**, stitch along seamline for about 1" (2.5cm) each side of the small dot, stitching through dot, as shown. Clip to stitching at the dot.

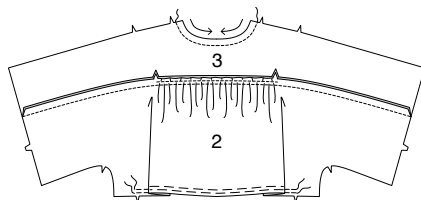
To **GATHER** shoulder edge and lower edge between the notches, loosen needle tension slightly. On **OUTSIDE**, stitch 5/8" (1.5cm) from cut edge using a long stitch. Stitch again 1/4" (6mm) from the first stitching within the seam allowance.



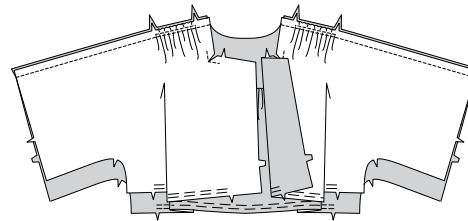
3. **GATHER** upper and lower edges of **BODICE BACK (2)** between the notches.

STAYSTITCH neck edge of **YOKE BACK (3)**.

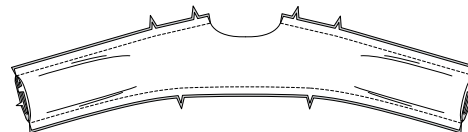
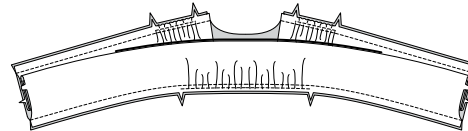
With **RIGHT** sides together and raw edges even, pin upper edge of bodice back to lower edge of yoke back, matching centers and notches, pulling up gathering stitches to fit. Stitch.



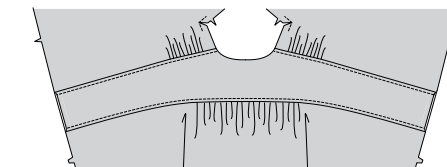
4. With **RIGHT** sides together and raw edges even, pin yoke back to bodice front at shoulder edges, matching notches, pulling up gathering stitches to fit. Stitch.



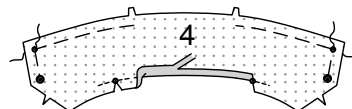
5. On **OUTSIDE**, roll bodice front and bodice back up, clearing seam allowances of yoke. With **RIGHT** sides together and raw edges even, pin yoke back facing to yoke back, matching centers and notches. Stitch shoulder and lower edges. **TRIM SEAM.**



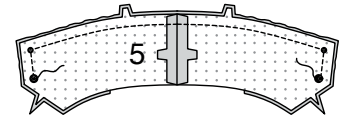
6. Turn yoke and facing **RIGHT** side out, pulling out bodice sections. Press. On **OUTSIDE**, **TOPSTITCH** yoke 1/4" (6mm) from seams.



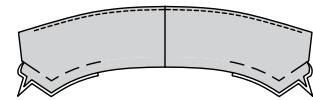
7. To reinforce **UPPER COLLAR (4)** at inner small dots, stitch along seamline for about 1" (2.5cm) each side of the small dot, stitching through dot, as shown. Clip to stitching at the dot. Press under 5/8" (1.5cm) seam allowance between the clips. Trim to 1/4" (6mm). **EASE** upper edge of upper collar from large dot to notch, breaking stitching at small dot.



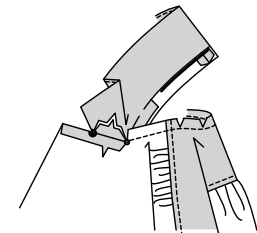
8. Stitch center back edges of **UNDERCOLLAR (5)**. With **RIGHT** sides together and raw edges even, pin undercollar to upper collar, matching small and large dots, pulling up ease stitches to fit. Stitch double notched edge between large dots. **TRIM SEAM.**



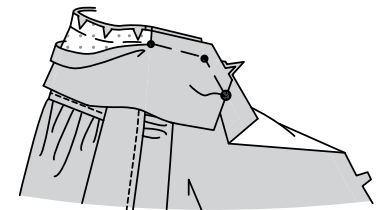
9. **UNDERSTITCH** upper edge of undercollar as far as possible. Turn collar; press. Baste raw edges together.



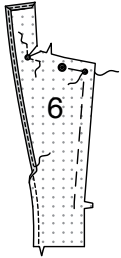
10. With **RIGHT** sides together, pin front edge of collar to front edge of bodice front, matching small dots, large dots, and notches, having raw edges even. Baste between small and large dots. Clip back edge of bodice back to staystitching along curves.



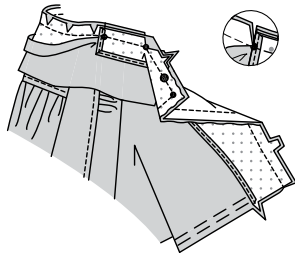
11. With **RIGHT** sides together and raw edges even, pin remaining neck edge, matching notches, placing inner small dot at shoulder seam. Baste collar and undercollar to front neck edge as far as small dot. Baste only undercollar section to neck edge between inner small dots.



12. Stitch 1/4" (6mm) from inner edge and shoulder edge of BODICE FRONT FACING (6). Finish by turning under along stitching and stitching close to fold, or with zigzag stitches, or overlock. To reinforce bodice front facing at inner small dot, stitch along seamline for about 1" (2.5cm) each side of the small dot, stitching through dot, as shown. Clip to stitching at the dot. **EASE** lapel edge of facing from large dot to notch, breaking stitching at small dot.

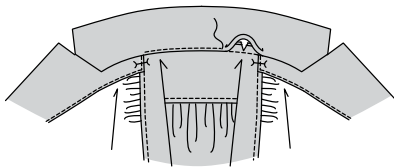


13. With RIGHT sides together and raw edges even, pin facing to front and neck edge, matching small dots, large dots, and notches, pulling up ease stitches to fit. Stitch, pivoting with needle in fabric at inner small dot, keeping pressed edge of collar free. Clip collar seam allowance at ends of facings, as shown; trim seam.



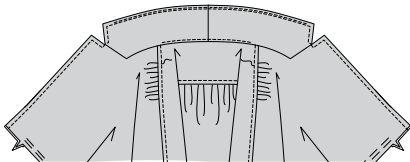
14. Turn facing to INSIDE, turning back neck seam toward collar; press. Stitch pressed edge of collar over neck seam.

To keep facing in place, on INSIDE, pin facing to shoulder edge, placing pins on OUTSIDE.

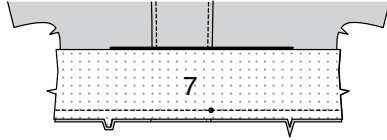


15. On OUTSIDE, stitch across facing over previous topstitching.

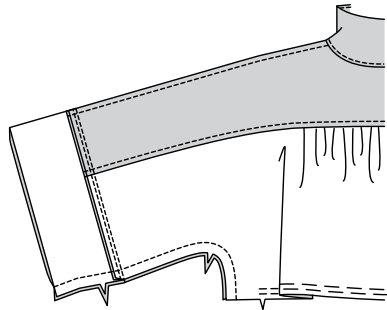
TOPSTITCH upper edge of collar, lapel, and front edge of bodice, squaring stitching where collar and lapel meet.



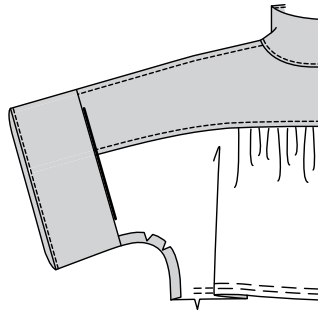
16. With RIGHT sides together and raw edges even, pin SLEEVE FACING (7) to sleeve, matching small dots and notches. Stitch. **TRIM SEAM.**



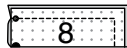
17. **UNDERSTITCH** the facing; press, pressing facing out. Stitch bodice front and sleeve facing to bodice back and sleeve facing at entire underarm edges, matching seams and notches.



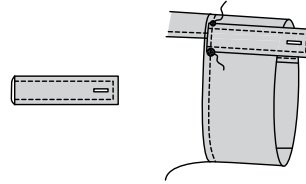
18. Turn facing to INSIDE; press.



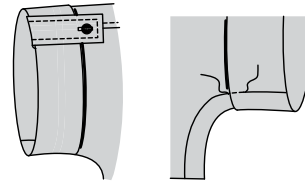
19. Fold SLEEVE TAB (8) in half, lengthwise, with RIGHT sides together. Stitch, leaving marked end open.



20. Turn sleeve tab; press. **TOPSTITCH** 1/4" (6mm) from finished edges of tab. Make buttonhole at marking. On INSIDE, pin tab to sleeve facing, matching small and large dots. Stitch tab and sleeve facing in place 1/4" (6mm) from raw edge.

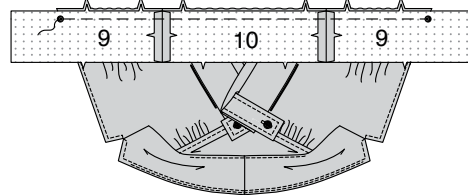


21. To make a cuff on sleeve, fold facing along foldline; press. Sew button to shoulder seam at small dot. Fold up sleeve tab and fasten. Stitch over upper edge of cuff along underarm seam for 1/2" (1.3cm).

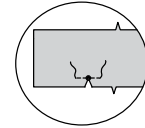
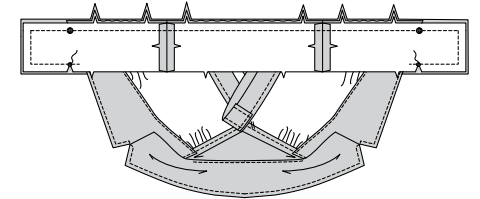


MIDRIFF

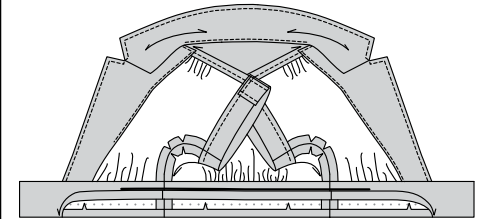
22. Stitch MIDRIFF FRONT (9) to MIDRIFF BACK (10) at side edges. With RIGHT sides together and raw edges even, pin lower edge of bodice to upper edge of midriff, matching centers, seams, and notches, pulling up gathering stitches to fit. Baste.



23. Stitch midriff front facing to midriff back facing at sides. To reinforce lower edge of facing at small dots, stitch along seamline for about 1" (2.5cm) each side of the small dots, stitching through dots, as shown. Clip to stitching at the dots. Pin RIGHT side of facing to WRONG side of bodice, matching centers, seams, and notches. Stitch upper edge of facing and ends between the large and small dots. **TRIM SEAM.**

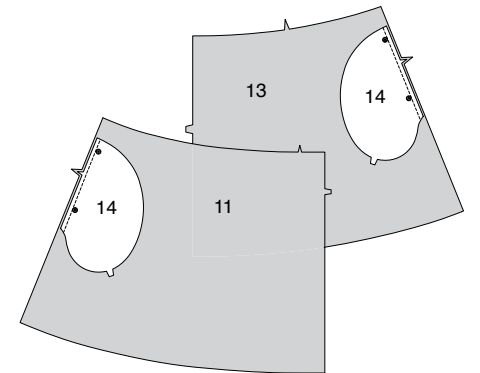


24. Turn ends; press, pressing seams toward midriff, and pressing midriff and facing out.

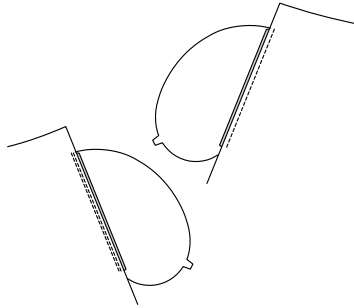


SKIRT

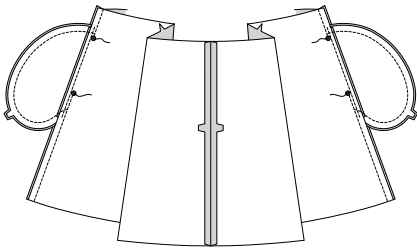
25. With RIGHT sides together and raw edges even, pin POCKET (14) to SKIRT FRONT (11), matching large dots. Stitch in a 3/8" (1cm) seam. Pin and stitch pocket to SKIRT BACK (13) in the same manner.



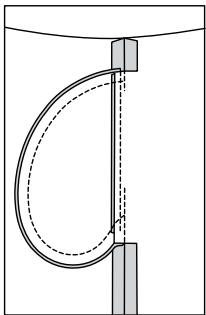
26. UNDERSTITCH the front pocket. Press seams toward pockets, pressing pockets out.



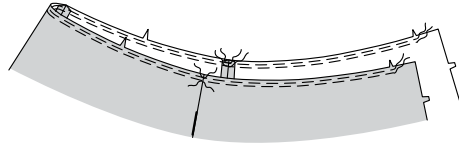
27. Stitch center back edges of skirt back. Pin skirt front to skirt back at side edges, matching large dots. Stitch side edges, leaving open between large dots. Stitch pocket edges together at side seams.



28. Clip skirt back seam allowance at ends of pocket, as shown. Press seam open above and below clips. Press pocket toward front.

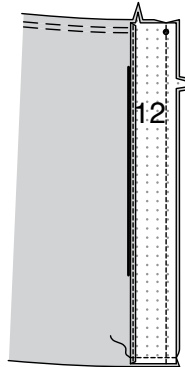


29. GATHER upper edge of skirt between the front notches, breaking stitching at side seams.



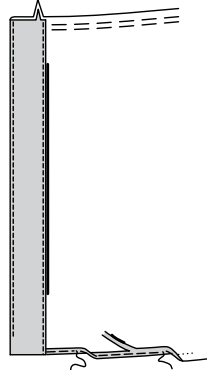
30. Stitch 1/4" (6mm) from inner edge of SKIRT FRONT FACING (12). Finish by turning under along stitching and stitching close to fold, or with zigzag stitches, or overlock.

With **RIGHT** sides together and raw edges even, pin facing to skirt, matching small dots and notches. Stitch front edge. Stitch lower edge in a 3/8" (1cm) seam. **TRIM SEAM.**



31. UNDERSTITCH the facing. Turn facing to **INSIDE**; press, pressing up the hem.

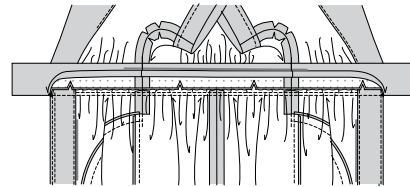
To make a **DESIGNER HEM**, press under 1/4" (6mm) on lower edge of skirt. Stitch close to pressed edge. Trim close to stitching. Press under another 1/8" (3mm) and stitch in place between inner edges of facings.



32. On **OUTSIDE**, **TOPSTITCH** 1/4" (6mm) from front edge.

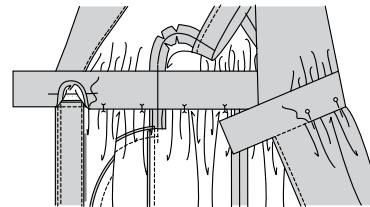
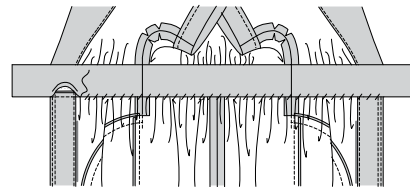


33. With **RIGHT** sides together and raw edges even, pin lower edge of midriff to upper edge of skirt, matching centers, seams, small dots, and notches, pulling up gathering stitches to fit. Stitch, being careful not to catch in free edge of midriff facing. Press seam toward midriff.

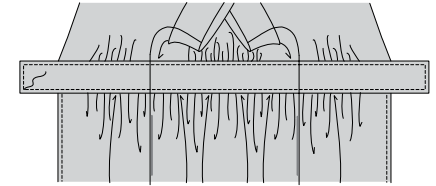


34. On **INSIDE**, press under raw edge of midriff facing 5/8" (1.5cm). Trim to 1/4" (6mm). Pin pressed edge of midriff facing over seam. **SLIPSTITCH** in place.

OR if you prefer, on **INSIDE**, press under raw edge of midriff facing a generous 1/2" (1.3cm). Trim to 1/4" (6mm). Pin pressed edge of midriff facing over seam, placing pins on **OUTSIDE**. On **OUTSIDE**, **STITCH IN THE DITCH** of the seam, catching in pressed edge of facing on the **INSIDE**.

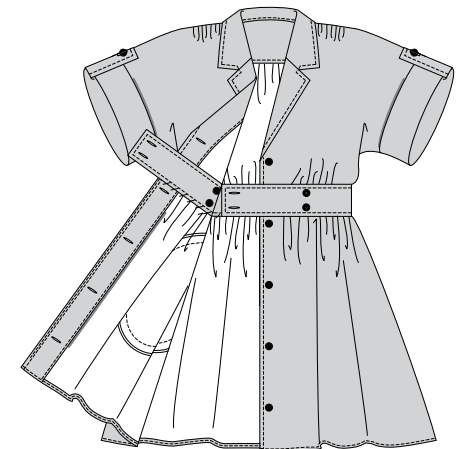


35. On **OUTSIDE**, **TOPSTITCH** midriff 1/4" (6mm) from seams and finished edges.



FINISHING

36. Make buttonholes on **RIGHT** front and both ends of midriff at markings. Sew buttons to **LEFT** front under buttonholes and on **INSIDE** of **RIGHT** front midriff facing at small dots.





Congrats!

You've completed your sewing adventure

**SHARE
YOUR** LOOK



Post your pattern and tag us
[@simplicity_creative_group](#) and [#simplicitypatterns](#)
for a chance to be featured on our social media.

Look for more PDF patterns at [simplicity.com](https://www.simplicity.com)

Have a question or need help with your sewing project call us at
1-800-782-0323

McCall's
by **design**_{group}

McCall's ©2024 a division of IG Design Group Americas Inc. • Atlanta, GA 30342 USA www.thedesigngroup.com • All Rights Reserved. www.mccall.com • Made in the U.S.A. Fabriqué aux États-Unis.
To be used for individual private home use only and not for commercial or manufacturing purposes. • A usage privé seulement et non à des fins commerciales ou de production en série. • Para uso privado solamente, no se puede utilizar con propósitos de comercialización o de producción en serie.