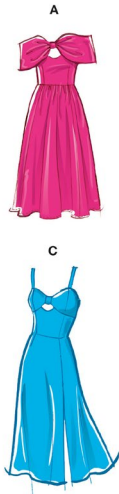


McCall's

M8554



Designed and printed in USA

Average

MISSES' DRESSES

Suggested Fabrics: Cotton Blends, Crepe Back Satin, Satin, Taffeta. **Lining:** Lining Fabrics. **Interfacing:** Lightweight Fusible.

Notions: A,B,C: One 16" (41cm) invisible zipper (adjust to fit), 2½ yds. (2.2m) of ¼" (6mm) boning, one pkg. of ½" (1.3cm) single fold bias tape.

Sizes	8	10	12	14	16	18	20	22	24	26
European	34	36	38	40	42	44	46	48	50	52

BODY MEASUREMENTS: Select pattern size based on body measurements

Bust	31½	32½	34	36	38	40	42	44	46	48	Ins.
Waist	24	25	26½	28	30	32	34	37	39	41	"
Hip-9" below waist	33½	34½	36	38	40	42	44	46	48	50	"
Back-neck to waist	15¾	16	16¼	16½	16¾	17	17¼	17½	17¾	18	"

Interfacing A,B,C	20"	1½ yds.									
Dress A	45**	3½	3½	3½	3½	3½	4¼	4¾	4½	4½	Yds.
	60**	2¼	2½	2½	2½	2½	2¾	3	3½	3½	"
Lining	45***	2¼	2¼	2¼	2¼	2¼	2½	2½	2½	2½	Yds.
Dress B	45**	2	2½	2½	2½	2½	2½	3	3½	3½	Yds.
	60**	1½	1½	1½	2	2	2	2½	2½	2½	"
Lining	45***	1½	1½	1½	1½	1½	1½	1½	1½	1½	Yds.
Dress C	45**	2	2	2	2	2	2½	2½	2½	2½	Yds.
	60**	1½	1½	1½	1½	1½	1½	1½	1½	1½	"
Lining	45***	2	2	2	2	2	2½	2½	2½	2½	Yds.

FINISHED GARMENT MEASUREMENTS (Includes Design and Wearing Ease)

A,B,C Bust	33½	34½	36	38	40	42	44	46	48	50	Ins.
A,B,C Waist	25	26	27½	29½	31½	33½	35½	37½	39½	41½	"
B,C Hip	38	39	40½	42½	44½	46½	48½	50½	52½	54½	"
Width, lower edge											
Dress A	75	76	77½	79½	81½	83½	85½	87½	89½	91½	Yds.
Dress B	42	43	44½	46½	48½	50½	52½	54½	56½	58½	"
Dress C	48½	49½	51	53	55	57	59	61	63	65	"
Finished back length from base of neck											
Dress A,C	43¾	44	44¼	44½	44¾	45	45¼	45½	45¾	46	Yds.
Dress B	31¾	32	32¼	32½	32¾	33	33¼	33½	33¾	34	"

*with nap **without nap

Moins Facile

ROBES POUR JEUNES FEMMES

Tissus Conseillés: Cotonnades, Crêpe de satin, Satin, Taffetas. **Doublure:** Tissus à doublure. **Entoilage:** Thermocollant léger.

Mercerie: A,B,C: 1 fermeture à glissière invisible de 41cm (adaptez pour ajuster), 2.2m de baleine de 6mm, 1 paquet de ruban de biais simple de 1.3cm.

Tailles	8	10	12	14	16	18	20	22	24	26
Françaises	36	38	40	42	44	46	48	50	52	54
Européen	34	36	38	40	42	44	46	48	50	52

MESURES DU CORPS: Choisissez la taille du patron basée sur les mesures du corps

Poitrine	80	83	87	92	97	102	107	112	117	122	cm
Taille	61	64	67	71	76	81	87	94	99	104	"

Hanches (23cm au-dessous de la taille)

	85	88	92	97	102	107	112	117	122	127	cm
--	----	----	----	----	-----	-----	-----	-----	-----	-----	----

Dos du cou à la taille	40	40.5	41.5	42	42.5	43	44	44.5	45	46	"
Entoilage A,B,C	51cm	1.5m									

Robe A	115cm*	2.9	2.9	3.1	3.3	3.5	3.9	4.0	4.1	4.2	4.3	m
	150cm*	2.1	2.2	2.2	2.3	2.4	2.6	2.7	2.7	2.9	3.0	"
Doublure	115cm**	2.1	2.1	2.1	2.1	2.1	2.1	2.4	2.4	2.5	2.9	m

Robe B	115cm*	1.8	1.9	1.9	2.1	2.2	2.3	2.6	2.7	2.9	2.9	m
	150cm*	1.7	1.7	1.7	1.8	1.8	1.8	1.9	1.9	1.9	2.1	"
Doublure	115cm**	1.3	1.3	1.3	1.3	1.3	1.3	1.4	1.5	1.5	1.5	m

Robe C	115cm*	1.8	1.8	1.8	1.8	1.8	1.9	2.1	2.1	2.1	2.2	m
	150cm*	1.7	1.7	1.7	1.7	1.7	1.7	1.7	1.7	1.7	1.7	"
Doublure	115cm**	1.8	1.8	1.8	1.8	1.8	1.8	1.9	1.9	1.9	1.9	m

MESURES DES VÊTEMENTS FINI (Motif et aisance de port compris)

A,B,C Poitrine	85	88	91	97	102	107	112	117	122	127	cm
A,B,C Taille	64	66	70	75	80	85	90	95	100	105	"
B,C Hanches	97	99	103	108	113	118	123	128	133	138	"

Largeur à l'ourlet

Robe A	191	193	197	202	207	212	217	222	227	232	cm
Robe B	107	109	113	118	123	128	133	138	144	149	"
Robe C	123	126	130	135	140	145	150	155	160	165	"

Longueur finie – dos, votre nuque à l'ourlet

Robe A,C	111	112	112	113	114	114	115	116	116	117	cm
Robe B	81	81	82	83	83	84	84	85	86	86	"

*avec sens **sans sens



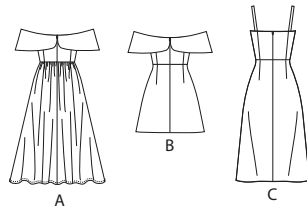
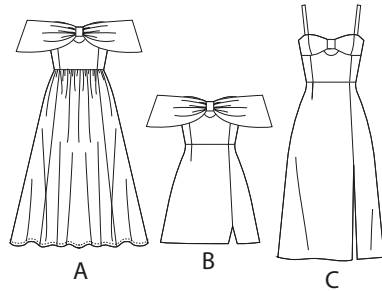
M8554

Page 1 of 4

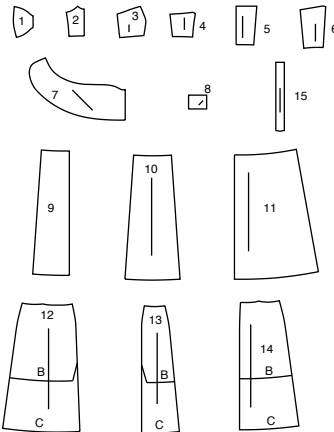
McCall's®

English

1-800-782-0323



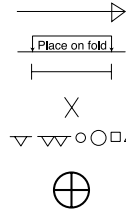
15 PATTERN PIECES



1 BODICE UPPER FRONT - A,B,C
2 BODICE LOWER FRONT - A,B,C
3 BODICE UPPER SIDE FRONT - A,B,C
4 BODICE LOWER SIDE FRONT - A,B,C
5 BODICE BACK - A,B,C
6 BODICE SIDE BACK - A,B,C
7 FLOUNCE - A,B
8 KNOT - A,B,C

9 SKIRT FRONT - A
10 SKIRT SIDE FRONT - A
11 SKIRT BACK - A
12 SKIRT RIGHT FRONT - B,C
13 SKIRT LEFT FRONT - B,C
14 SKIRT BACK - B,C
15 SHOULDER STRAP - C

PATTERN MARKINGS



GRAINLINE: Place on straight grain of fabric, parallel to selvage or fold.

FOLDLINE: Place line on fold of fabric.

BUTTONHOLE MARKING: Indicates exact length and placement of buttonholes.

BUTTON MARKING: Indicates button placement.

NOTCHES AND SYMBOLS: For matching seams and construction details.

Indicates the Bustline, Waistline, Hip and/or Biceps. Measurements refer to circumference of Finished Garment (Body Measurement + Wearing Ease + Design Ease). Adjust pattern if necessary. The measurement excludes pleats, tucks, darts and seam allowances.

SEAM ALLOWANCE: 5/8" (1.5cm) included unless otherwise indicated, but not printed on tissue.

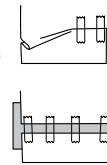
ADJUST IF NECESSARY

Lengthen or Shorten at adjustment lines (==) or where indicated on pattern. If substantial length is added, you may need to purchase additional fabric.

TO SHORTEN: Crease along adjustment line. Make a fold half the amount needed. Tape in place.

TO LENGTHEN: Slash between adjustment lines. Spread amount as needed, keeping edges parallel. Tape over paper.

When Alteration lines are not on tissue, lengthen or shorten at lower edge.



CUTTING AND MARKING

SHRINK FABRIC if not labeled pre-shrunk. Press.

CIRCLE LAYOUT for View, Size, Fabric Width.

Use **WITH NAP** layout for fabrics with one-way designs, nap, pile or surface shading. Because most knits have surface shading, a with nap layout is used.

For **DOUBLE THICKNESS (WITH FOLD)** - fold fabric with right sides together.

*** DOUBLE THICKNESS (WITHOUT FOLD)** - For fabrics with nap, fold fabric crosswise, right sides together. Mark as shown. Cut along crosswise fold of fabric (A). Turn upper layer 180° so arrows go in same direction and place over lower layer, right sides together (B).

For **SINGLE THICKNESS** - place fabric right side up. (For Fur Pile fabrics, place pile side down.)

★ Cut other pieces first, allowing enough fabric to cut this piece. Open fabric. For "Cut 1" pieces, cut piece once on single layer of fabric with piece face up on right side of fabric.

Pattern may have cutting lines for several sizes. Select the proper cutting line or pattern pieces for your size.

Before **CUTTING** place all pieces on fabric according to layout. Pin. (**Layouts show approximate position of pattern pieces; position may vary according to your pattern size.**) Cut **ACCURATELY**, cutting notches outward.

Before removing pattern, **TRANSFER MARKINGS** and lines of construction to Wrong Side of fabric, using the Pin and Chalk Pencil method or Tracing Paper and Dressmaker Wheel. Markings needed on right side of fabric should be thread traced.

NOTE: Broken-line boxes (a! b! c!) in layouts represent pieces cut by measurements provided.

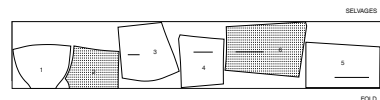
CUTTING LAYOUTS

RIGHT SIDE OF PATTERN	WRONG SIDE OF PATTERN	RIGHT SIDE OF FABRIC	WRONG SIDE OF FABRIC
-----------------------	-----------------------	----------------------	----------------------

INTERFACING A,B,C

USE PIECES: 1 2 3 4 5 6

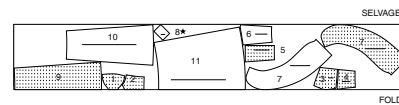
20" (51 CM)
ALL SIZES



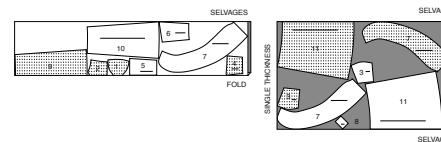
DRESS A

USE PIECES: 1 2 3 4 5 6 7 8 9 10 11

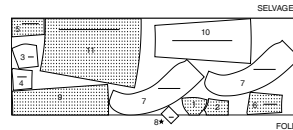
45" (115 CM)
WITH NAP
SIZES 8 10 12 14 16
CUT ONE OF PIECE 8



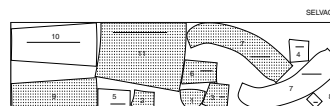
45" (115 CM) WITH NAP
SIZES 18 20 22 24 26



60" (150 CM)
WITH NAP
SIZES 8 10 12 14 16



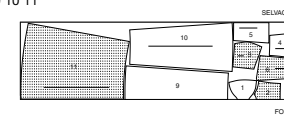
60" (150 CM)
WITH NAP
SIZES 18 20 22 24 26
CUT ONE OF PIECE 8



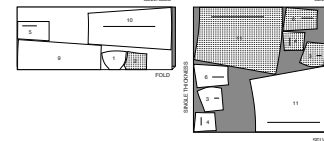
LINING A

USE PIECES: 1 2 3 4 5 6 9 10 11

45" (115 CM)
WITHOUT NAP
SIZES 8 10 12 14 16 18



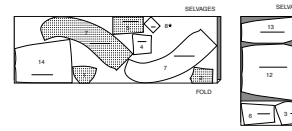
45" (115 CM)
WITHOUT NAP
SIZES 20 22 24 26



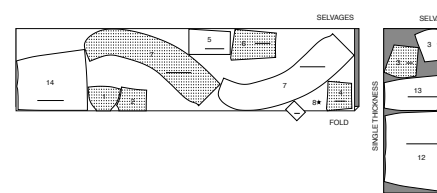
DRESS B

USE PIECES: 1 2 3 4 5 6 7 8 12 13 14

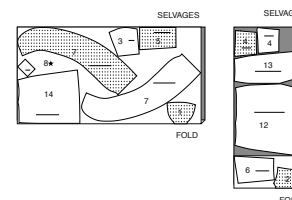
45" (115 CM)
WITH NAP
SIZES 8 10 12 14 16 18
CUT ONE OF PIECE 8



45" (115 CM) WITH NAP
SIZES 20 22 24 26



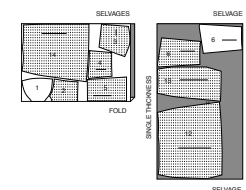
60" (150 CM)
WITH NAP
ALL SIZES
CUT ONE OF PIECE 8



LINING B

USE PIECES: 1 2 3 4 5 6 12 13 14

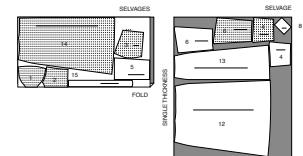
45" (115 CM)
WITHOUT NAP
ALL SIZES



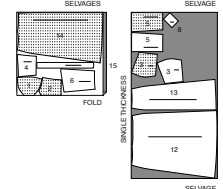
DRESS C

USE PIECES: 1 2 3 4 5 6 8 12 13 14 15

45" (115 CM)
WITH NAP
ALL SIZES



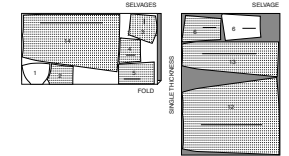
60" (150 CM)
WITH NAP
ALL SIZES



LINING C

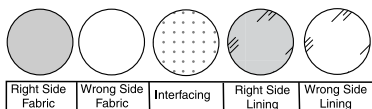
USE PIECES: 1 2 3 4 5 6 12 13 14

45" (115 CM)
WITHOUT NAP
ALL SIZES



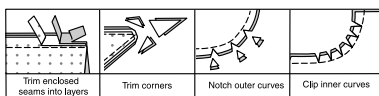
SEWING INFORMATION

FABRIC KEY



SEAM ALLOWANCES

Use 5/8" (1.5cm) seam allowances unless otherwise indicated.



PIN AND FIT

Pin or baste seams, **RIGHT SIDE TOGETHER**, matching notches. Fit garment before stitching major seams.

PRESS

Press seam allowances flat; then open unless otherwise stated. Clip where necessary so they lie flat.

GLOSSARY

Sewing methods in **BOLD TYPE** have Sewing Tutorial Video available. Scan **QR CODE** to watch videos:

DART - See **Darts**: "sewing flat dart" video.

EASE/GATHER - See **Gathering**: "sewing two row gathers" video.

FINISH - See **Seams**: "how to finish seam allowances" video.

NARROW HEM - See **Hems**: "sewing narrow hems" video.

REINFORCE - See **Machine Stitches**: "how to reinforce" video.

SLIPSTITCH - See **Hand Stitching**: "how to slip stitch" video.

STAYSTITCH - See **Machine Stitches**: "how to do stay-stitching" video.

TRIM - See **Seams**: "How to Sew: Trim, Clip, and Layer Seams" video.

UNDERSTITCH - see **Machine Stitches**: "how to understitch" video.

SEWING TUTORIALS



Build your skills viewing short, easy-to-follow videos at [simplicity.com/sewingtutorials](https://www.simplicity.com/sewingtutorials)

PATTERN PIECES WILL BE IDENTIFIED BY NUMBERS THE FIRST TIME THEY ARE USED.

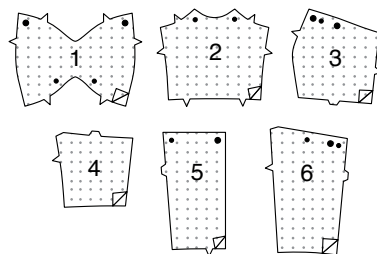
STITCH SEAMS WITH RIGHT SIDES TOGETHER UNLESS OTHERWISE STATED.

DRESS A, B,C

NOTE: The first view mentioned will be shown, unless otherwise indicated.

INTERFACING

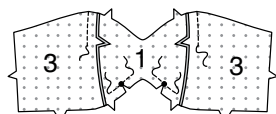
1. Fuse **INTERFACING** to wrong side of each matching **FABRIC** section, following manufacturer's instructions.



BODICE

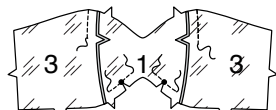
2. REINFORCE lower edge of **BODICE UPPER FRONT** (1) through small dots. Clip to small dots.

Stitch **BODICE UPPER SIDE FRONT** (3) sections to bodice upper front, from upper edge to notch.



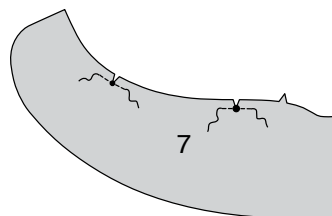
3. REINFORCE lower edge of bodice upper front **LINING** through small dots. Clip to small dots.

Stitch bodice upper side front **LINING** to bodice upper front **LINING**, from upper edge to notch. Press seam toward front. Press.



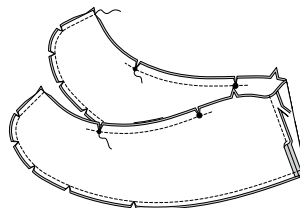
Views A, B

4. REINFORCE upper edge of each **FLOUNCE** (7) section through inner large and small dots, as shown. Clip to dots, as shown.

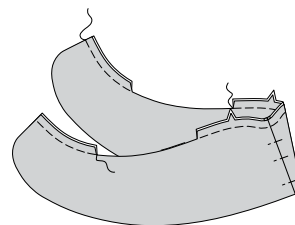


5. Pin two flounce sections, **RIGHT** sides together. Stitch center front seam. Stitch remaining flounce sections in same manner. Trim seam allowance to 1/4" (6mm).

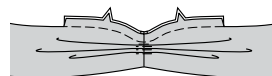
Pin flounce sections, **RIGHT** sides together, matching center fronts, notches, and large and small dots, having raw edges even. Stitch unnotched edge using 3/8" (1cm) seam. Stitch notched edge between large and small dots. **TRIM.** Clip curves.



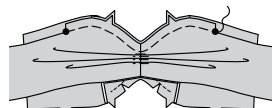
6. Turn **RIGHT** side out. Press. Baste raw edges together and along solid lines for pleats.



7. To make pleats, on **OUTSIDE**, fold along solid line. Bring solid line to broken line in direction of arrows. Baste.

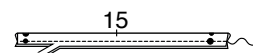


8. On **OUTSIDE**, pin upper edge of flounce to upper edge of bodice upper front matching center fronts, notches and large dots. Baste between large dots.



View C

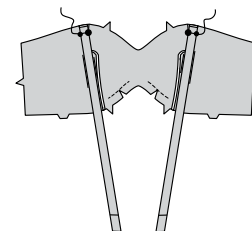
9. Fold strap in half lengthwise, **RIGHT** sides together, matching dots and having raw edges even. Stitch long edge using 3/8" (1cm) seam. Trim seam allowance to a scant 1/4" (6mm).



10. Turn **RIGHT** side out. Press. Baste raw edges together.



11. Pin strap to upper edge of bodice upper side front matching large and small dots, as shown. Baste.



Views A, B, C

12. Pin lining to bodice upper and side fronts, **RIGHT** sides together, (over flounce or straps) matching center fronts, seams, notches, and dots. Stitch upper edges to large dots, keeping finished edges of flounce (**Views A, B**) or straps (**View C**) free. **TRIM.** Clip inner curve.

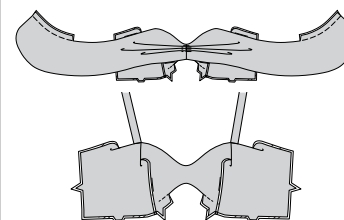


13. UNDERSTITCH lining as far as possible, stopping 5/8" (1.5cm) from large dots.

Pin lining to lower edge of bodice upper front, **RIGHT** sides together. Stitch between small dots, keeping flounce or straps free. **TRIM** seam. Clip inner curve.

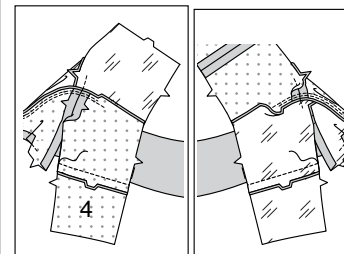


14. Turn **RIGHT** side out. Press.

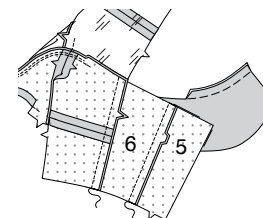


15. Keeping lining free, stitch **BODICE LOWER SIDE FRONT** (4) to bodice upper side front, matching notches.

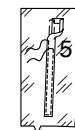
Stitch bodice lower side front **LINING** to bodice upper side front **LINING** in same manner.



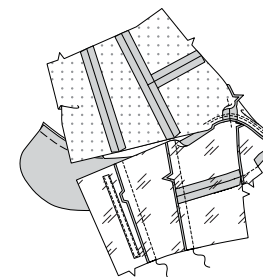
16. Stitch **BODICE SIDE BACK** (6) to **BODICE BACK** (5) matching double notches. Stitch bodice side back to bodice upper and lower side fronts at sides.



17. To create channel for boning, cut a piece of 1/2" (1.3cm) wide single fold bias the length of the stitching lines on bodice back, plus 1" (2.5cm). Press under 1/2" (1.3cm) on ends of tape. Pin tape to **WRONG** side of bodice back **LINING** centered over stitching lines. Stitch close to long edges of tape and across upper end, leaving bottom end open to insert boning.

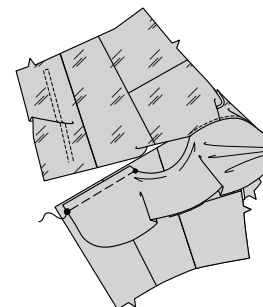


18. Stitch bodice side back **LINING** to bodice back **LINING** matching double notches. Press seam allowance toward back. Stitch side back lining to bodice upper and lower side front lining at sides. Press seam allowances toward back.

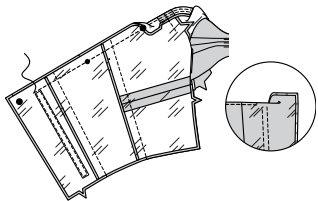


Views A, B

19. With **RIGHT** sides up, pin back end of flounce to upper edge of bodice back matching large and small dots. Baste.

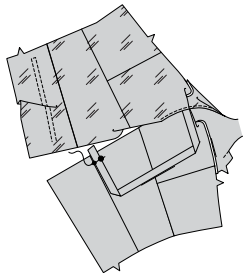


20. With **RIGHT** sides together, pin bodice back lining to upper edge of bodice back, over flounce, matching large and small dots. Stitch upper edge to within 2"(5cm) of back opening edge, keeping finished edge of flounce free. **UNDERSTITCH** lining stopping stitching 1/2"(1.3cm) before boning casing on back lining.

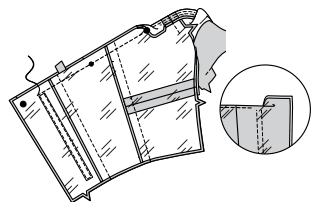


View C

21. With **RIGHT** sides up, pin free end of strap to upper edge of bodice back matching large and small dots. Baste. Turn lining down and try on bodice. Adjust strap if necessary.



22. With **RIGHT** sides together, pin bodice back lining to upper edge of bodice back, over strap, matching large and small dots. Stitch upper edge to within 2"(5cm) of back opening edge, keeping finished edge of strap free. **UNDERSTITCH** lining to within 3"(7.5cm) of back opening edge.



Views A, B, C

23. Pin lining to upper edge of **BODICE LOWER FRONT (2)**, matching small dots. Stitch upper edge, as shown. **TRIM. UNDERSTITCH** lining.



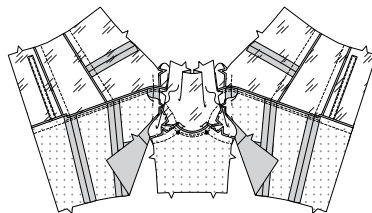
24. Turn lining to **INSIDE**. Press.



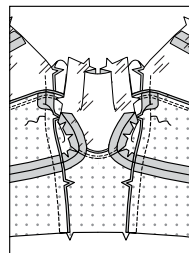
25. Open out bodice lower front lining. **STAYSTITCH** upper notched edge of bodice lower front and lining, as shown.



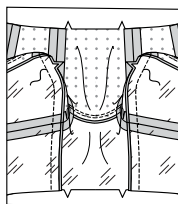
26. Pin top edge of bodice lower front to bottom edge of bodice upper front matching notches and small dots. Pin lining edges together. Stitch in one continuous seam.



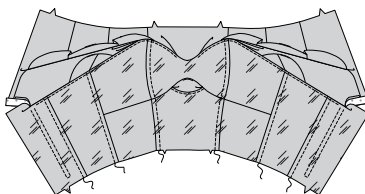
27. Stitch remainder of side front seams in bodice connecting with previous stitching.



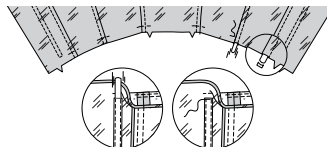
28. Stitch remainder of side front seams in bodice linings. Press seam toward front.



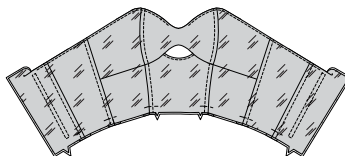
29. To create remaining channels for boning on **LINING**, on **OUTSIDE**, stitch bodice upper and lower fronts 3/8"(1cm) away from seam, catching in seam allowances. Stitch bodice side back and bodice back 3/8"(1cm) away from seams in same manner.



30. Cut a piece of boning the length of each bodice lining side front, side, and side back seam between upper and lower seamlines. Cut two pieces of boning the length of stitching lines on bodice back. Trim 1/4"(6mm) from each end, curving ends, as shown. Feed boning into channels. Baste across lower ends of each seam. Stitch across open end of bias tape on bodice back lining.



31. Turn lining down. Press.

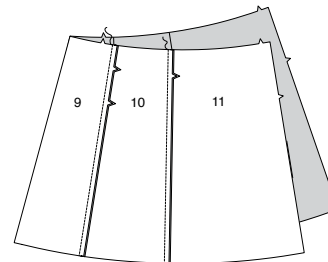


SKIRT A

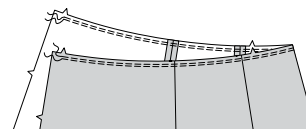
NOTE: If you haven't done so already, cut away 1"(2.5cm) from lower edges of skirt **LINING** pieces.

32. Stitch **SKIRT SIDE FRONT (10)** sections to side edges of **SKIRT FRONT (9)**.

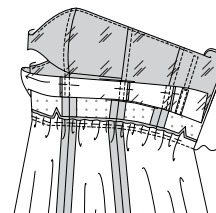
Stitch **SKIRT BACK (11)** to skirt side front at sides.



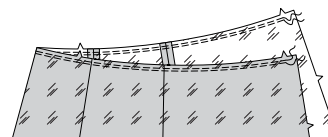
33. **GATHER** upper edge of skirt between notches on skirt back.



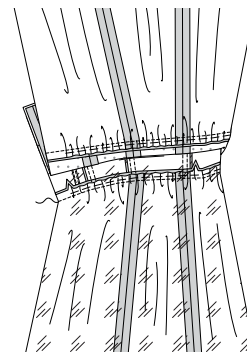
34. Open out bodice lining. With **RIGHT** sides together, pin upper edge of skirt to lower edge of bodice, matching center fronts, notches, and seams, having back opening edges even. Adjust gathers. Stitch, keeping lining free. Press seam toward bodice.



35. Stitch skirt **LINING** seams together in same manner as skirt. **GATHER** upper edge of skirt lining between back notches.



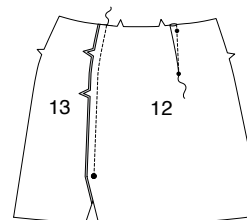
36. With **RIGHT** sides together, pin upper edge of skirt lining to lower edge of bodice lining, matching center fronts, notches, and seams, having back opening edges even. Adjust gathers. Stitch, keeping dress free, using a zipper foot, if necessary. Press seam toward bodice lining.



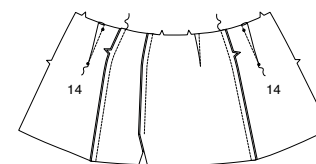
SKIRT B, C

NOTE: If you haven't done so already, cut away 1"(2.5cm) from lower edges of skirt **LINING** pieces.

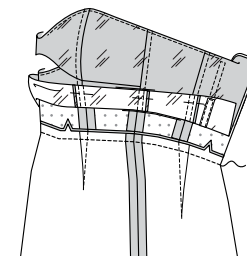
37. Stitch **DART** in **SKIRT RIGHT FRONT (12)**. Press dart toward center front. Pin **SKIRT LEFT FRONT (13)** to skirt right front, matching notches. Stitch above large dot.



38. Stitch **DART** in **SKIRT BACK (14)**. Press dart toward center back. Stitch skirt back to skirt front at sides.

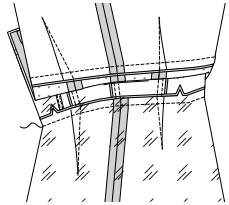
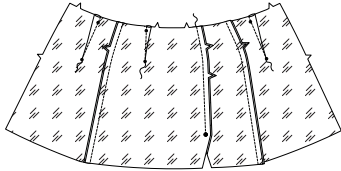


39. Open out bodice lining. Pin upper edge of skirt to lower edge of bodice matching notches, center fronts, seams, having back opening edges even. Stitch, keeping lining free. Press seam toward bodice.

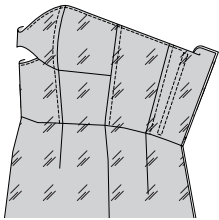


40. Stitch skirt **LINING** seams together in same manner as skirt.

With **RIGHT** sides together, pin upper edge of skirt lining to lower edge of bodice lining, matching notches, center fronts, and seams, having back opening edges even. Stitch, keeping dress free, using a zipper foot, if necessary. Turn seam toward bodice lining.



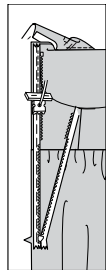
41. Turn lining down. Press.



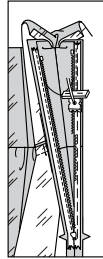
INVISIBLE ZIPPER

NOTE: Stitch the invisible zipper using an invisible zipper foot. If the zipper is longer than the zipper opening, adjust after the zipper is inserted. For a How to video, see **ZIPPER: "sewing an invisible zipper"**.

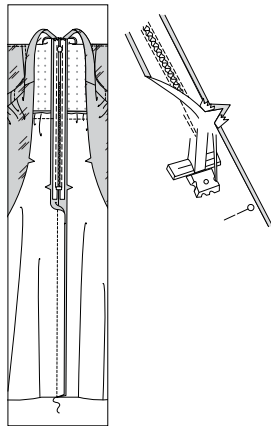
42. Open the zipper and press the tape using a cool iron. Open out lining and keep the free upper edge of back lining out of the way. On **OUTSIDE**, pin **RIGHT** side of the zipper face down on the **RIGHT** side of the zipper opening. Have the coil along the seam line, the tape within the seam allowance and the top stop $3/4"$ (2cm) below upper edge, as shown. Hand-baste along center of the tape. Position zipper foot at the top of the zipper with **RIGHT** groove of the foot over coil. Stitch along tape to the notch. Back-stitch to reinforce.



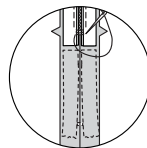
43. Pin the remaining half of the zipper to the **LEFT** side of the zipper opening in same manner. Make sure the upper and lower edges of the garment are even. Hand-baste along the center of the tape. Position zipper foot at the top of the zipper with **LEFT** groove over the coil. Stitch along tape to the notch. Back-stitch to reinforce.



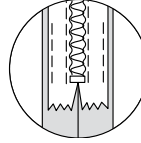
44. Close zipper and check that it is invisible from the **OUTSIDE**. Pull the free ends of the zipper tape away from the seam allowance. Pin remaining center back seam together below zipper. Position zipper foot all the way to the **LEFT** so the needle goes down through the outer notch of the foot. Start stitching seam $1/4"$ (6mm) above lowest stitch and slightly to the **LEFT**. Stitch remainder of seam using your regular presser foot.



45. If the zipper is longer than the opening, using a strong thread, hand-sew a few small stitches across ends of coils at end of opening. Trim away lower end of zipper tape to within $5/8"$ (1.5cm) of hand-stitches.

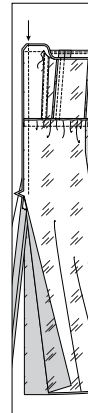


46. If you prefer, open out each seam allowance at end of zipper and stitch tape to seam allowance.

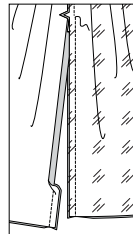


47. Open out back opening edge of dress, rolling the zipper teeth away from the opening edge. Turn back lining to **OUTSIDE** and stitch remaining upper edges of back and lining together, connecting to previous stitching. Trim.

Pin back opening edges of lining, and dress together. Stitch across lining $1/2"$ (1.3cm) from back edges, keeping zipper teeth free. Trim corners. Do not trim center back edges.



48. Keeping skirt free, stitch remainder of lining center back seam below zipper.



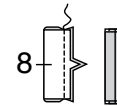
49. Turn lining to inside. Press.



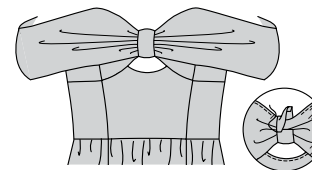
FINISHING

50. Fold **KNOT** (8) in half lengthwise, **RIGHT** sides together, matching notches. Stitch.

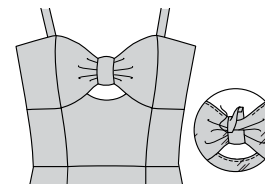
Turn **RIGHT** side out. Press. Bring seam to center.



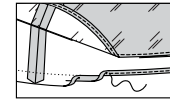
51. Views A, B: With **RIGHT** sides up, wrap knot around upper bodice and flounce at center front, covering pleats, turning under one end and lapping over the other on lining side. **SLIPSTITCH**.



52. View C: With **RIGHT** sides up, wrap knot around upper bodice, centering over center front, turning under one end and lapping over the other on the lining side. **SLIPSTITCH**.

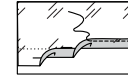


53. View A: Make a $5/8"$ (1.5cm) **NARROW HEM** on lower edge of lining and dress.



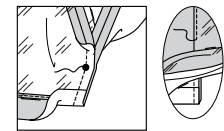
Views B, C

54. Make a $5/8"$ (1.5cm) **NARROW HEM** on lower edge of lining.

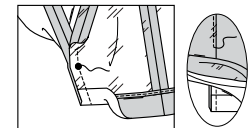


55. On **INSIDE**, open out lining on the skirt right front opening edge. With **RIGHT** sides together pin lining and dress opening edges together at the right front opening edges, pulling the left front opening edges out of the way.

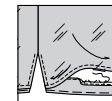
Turn lower edge of skirt right front to **OUTSIDE** at lower edge along hemline, over lining. Pin. Stitch right front opening to large dot. **UNDERSTITCH** lining as far as possible.



56. Turn lining to **INSIDE** at right front opening and open out lining on the skirt **LEFT** front opening edge. Pin lining and dress left front opening edges **RIGHT** sides together. Turn lower edge of skirt left front to **OUTSIDE** along hemline, over lining. Pin. Stitch left front opening to large dot, keeping right front free. **UNDERSTITCH** lining as far as possible.



57. Turn lining to inside. Press. Turn up remainder of hem on lower edge of dress. Baste close to fold. **FINISH** upper edge of hem. Hand sew in place.





Congrats!

You've completed your sewing adventure

SHARE YOUR LOOK



Post your pattern and tag us
[@simplicity_creative_group](#) and [#simplicitypatterns](#)
for a chance to be featured on our social media.

Look for more PDF patterns at [simplicity.com](https://www.simplicity.com)

Have a question or need help with your sewing project call us at
1-800-782-0323

McCall's
by **design**_{group}

McCall's ©2024 a division of IG Design Group Americas Inc. • Atlanta, GA 30342 USA www.thedesigngroup.com • All Rights Reserved. www.mccall.com • Made in the U.S.A. Fabriqué aux États-Unis.

To be used for individual private home use only and not for commercial or manufacturing purposes. • A usage privé seulement et non à des fins commerciales ou de production en série. • Para uso privado solamente, no se puede utilizar con propósitos de comercialización o de producción en serie.